



NATIONAL BUREAU OF STATISTICS

Consumer Price Index June 2019

(BASE PERIOD DECEMBER 2009 = 100)

Report Date: July 2019

Data Source: National Bureau of Statistics (NBS)

Content

Brief Methodology	1
All Items Index	5
Food Index	7
All Items Less Farm Produce	9
State Profiles	9
Infographics	11
Statistical News	17
Acknowledgements/Contacts	28

Brief Methodology

The CPI measures the average change over time in prices of goods and services consumed by people for day-to-day living. The construction of the CPI combines economic theory, sampling and other statistical techniques using data from other surveys to produce a weighted measure of average price changes in the Nigerian economy. The weighting occurs to capture the importance of the selected commodities in the entire index. The production of the CPI requires skills of economists, statisticians, computer scientists, data collectors and others.

Key in the construction of the price index is the selection of the market basket of goods and services. Every month, 10,534 informants spread across the country provide price data for the computation of the CPI. The market items currently comprise of 740 goods and services regularly priced.

The first stage in the calculation of the CPI is the collection of prices on each item (740 goods and services) from outlets in each sector (rural or urban) for each state. Prices are then averaged for each item per sector across the state. The next step is to use the average price to calculate the basic index for each commodity: The current year price of each commodity is compared with a base year's price to obtain a relative price.

Next we use the Laspeyres formula to compute an aggregated index for each class (which has a multitude of commodities which have similar consumption purposes): Here the sum of the product of weights (obtained from the expenditure survey) and relative prices for each item is divided by the sum of the weight of the items in that class, and the result multiplied by 100 gives the required index number. This index number is still classified according to the urban or rural classification sector for each of the 36 states and the FCT. This yields 85 classes then 48 groups which are then reclassified into 12 Divisions to derive:

1. The country composite index
2. The Urban National index
3. The Rural National index
4. The Combined Urban and Rural State Composite index

The survey methodology generates 3774 all items indices for all states and the FCT.













This edition of the Statistical News contains the revised Consumer Price Index (CPI) based on Nigeria Living Standard Survey (NLSS) 2003/2004. The consumption expenditure data were re-valued to November 2009, which is the base period for the revised CPI.

The May 2003 and September 1985 based indices are being continued using factors derived from the new CPI. These indices will yield the same price change for any commodity group contained in all the series.

A new subindex – Imported Food Index- is available in the revised CPI.

Note: The urban and rural indices were weighted with the ratio of their populations to the national i.e. 0.455 and 0.545 respectively to compute the composite indices at the 12 Classification of Individual Consumption by Purpose (COICOP) functions and all items levels. This may cause variance between a recalculated all items index using the weights published on table 2 and the published all items index because the published weights were computed only from consumption expenditure survey result. The following breakdown highlights a non-exhaustive list of the components of the current CPI:

The following breakdown highlights a non-exhaustive list of the components of the current CPI:

FOOD AND NON-ALCOHOLIC BEVERAGES	 Food	 Bread and cereals	 Meat	 Fish	 Milk, cheese and eggs	 Oils and fats
	 Fruit	 Vegetables	 Potatoes, Yam & other tubers	 Food products n.e.c	 Coffee, tea and cocoa	 Soft drinks

ALCOHOLIC BEVERAGES, TOBACCO AND KOLA	 Spirits	 Wine	 Tobacco	 Narcotics
--	--	---	--	--

CLOTHING AND FOOTWEAR	 Clothing materials, other articles of clothing	 Garments	 Cleaning, repair and hire of clothing	 Shoes and other footwear	 Repair and hire of footwear
----------------------------------	---	---	--	--	---

HOUSING, WATER, ELECTRICITY, GAS



Actual and imputed rentals for housing



Water supply



Miscellaneous services relating to the dwelling



Electricity



Gas



Liquid fuel



Solid fuels

FURNISHINGS, HOUSEHOLD EQUIPMENT



Furniture and furnishings



Carpets and other floor coverings



Repair of Furniture



Household textiles



Major household appliances whether electric or not



Repair of household appliances



Glassware, tableware and household utensils



Non-durable household goods



Domestic services and household services

HEALTH



Pharmaceutical products



Medical services



Dental services



Paramedical services



Hospital services

TRANSPORT



Motor cars



Motor cycles



Bicycles



Vehicle spare parts



Fuels and lubricants for personal transportation



Maintenance and repair of personal transport



Passenger transport by road



Passenger transport by air



Passenger transport by sea and inland waterways

COMMUNICATION



Postal services



Telephone and telefax
equipment



Telephone and telefax
services

RECREATION AND CULTURE



Audio-visual,
photographic
and information
processing equipment



Photographic
development



Musical
instrument



Recreational
and sporting
services



Games of
chance

EDUCATION



Books & stationery

RESTAURANTS AND HOTELS



Catering services



Accommodation services

MISCELLANEOUS GOODS AND SERVICES



Hairdressing salons
and personal
grooming
establishments



Appliances,
articles and products
for personal care



Jewellery, clocks
and watches



Insurance



Other services

All Item Index

The consumer price index, (CPI) which measures inflation increased by 11.22 percent (year-on-year) in June 2019. This is 0.18 percent points lower than the rate recorded in May 2019 (11.40) percent.

Increases were recorded in all COICOP divisions that yielded the Headline index.

On month-on-month basis, the Headline index increased by 1.07 percent in June 2019, this is 0.04 percent rate lower than the rate recorded in May 2019 (1.11) percent.

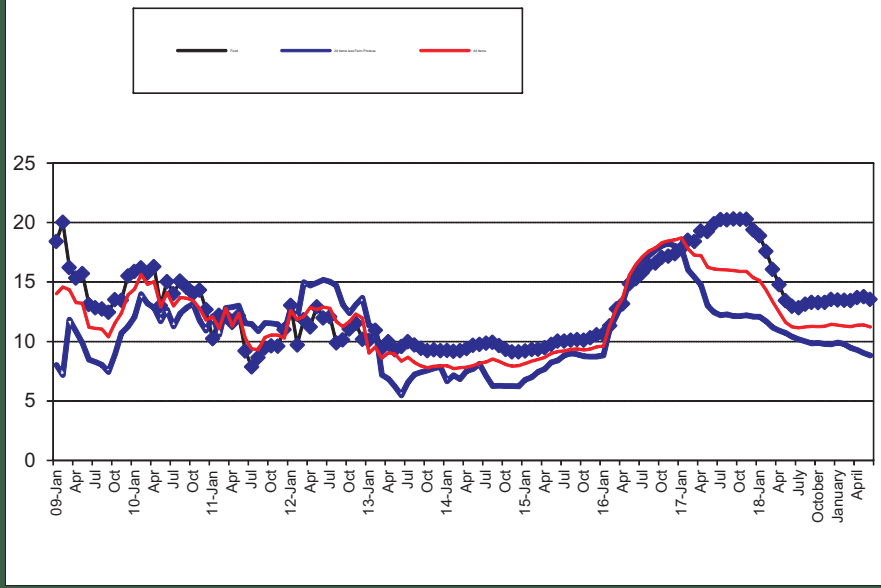
The percentage change in the average composite CPI for the twelve months period ending June 2019 over the average of the CPI for the previous twelve months period was 11.29 percent, similar to the 11.29 percent recorded in May 2019.

The urban inflation rate increased by 11.61percent (year-on-year) in June 2019 from 11.76 percent recorded in May 2019, while the rural inflation rate increased by 10.87 percent in June 2019 from 11.08 percent in May 2019.

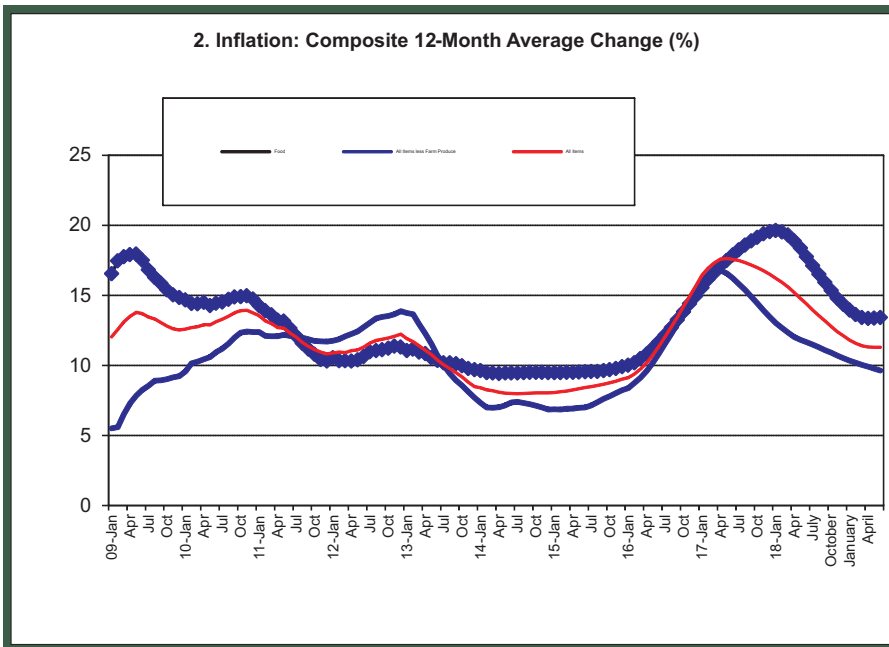
On a month-on-month basis, the urban index rose by 1.10 percent in June 2019, up by 0.05 from 1.15 percent recorded in May 2019, while the rural index also rose by 1.05 percent in June 2019, up by 0.02 from the rate recorded in May 2019 (1.07) percent.

The corresponding twelve-month year-on-year average percentage change for the urban index was 11.65 percent in June 2019. This is less than 11.66 percent reported in May 2019, while the corresponding rural inflation rate in June 2019 was 10.99 percent compared to 10.98 percent recorded in May 2019.

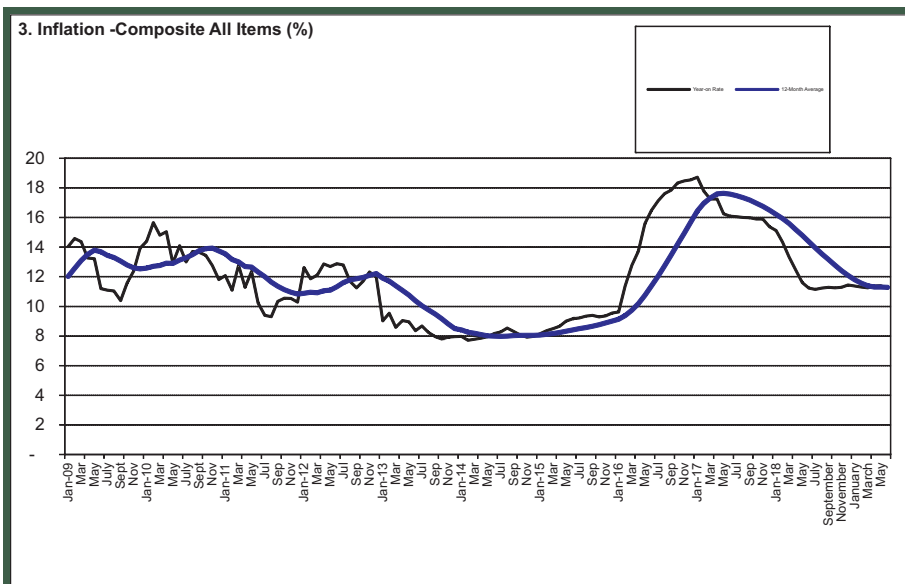
1. Inflation: Composite Year-on Change (%)



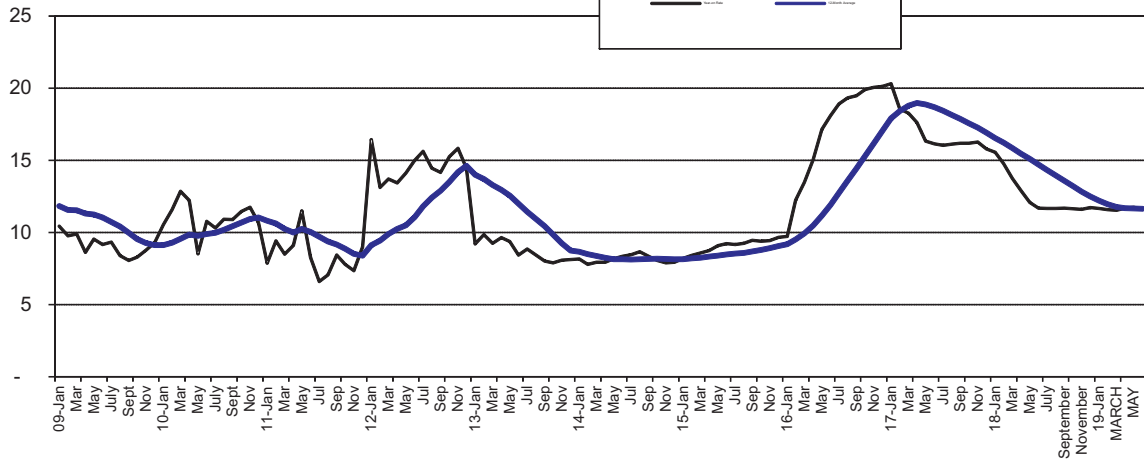
2. Inflation: Composite 12-Month Average Change (%)



3. Inflation -Composite All Items (%)



4. Inflation -Urban All Items (%)



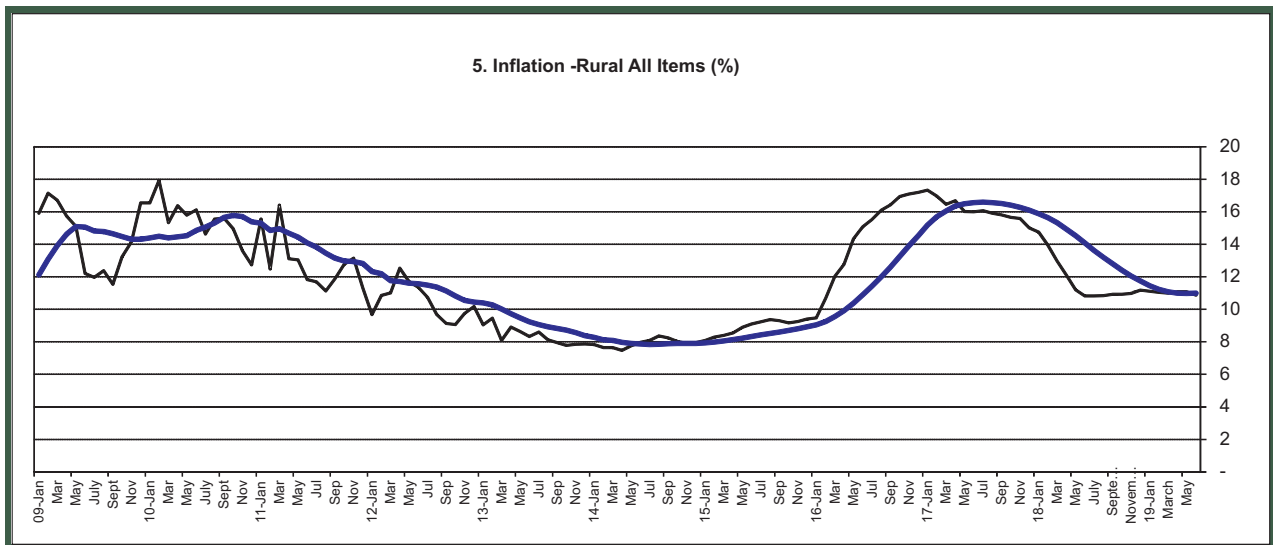
Food Index

The composite food index stood at 13.56 percent in June 2019 compared to 13.79 percent in May 2019.

This rise in the food index was caused by increases in prices of Bread and cereals, Meat, Oils and fats, Potatoes, yam and other tubers, Fish, Vegetables and fruits.

On month-on-month basis, the food sub-index increased by 1.36 percent in June 2019, down by 0.05 percent points from 1.41 percent recorded in May 2019.

The average annual rate of change of the Food sub-index for the twelve-month period ending June 2019 over the previous twelve-month average was 13.42 percent, 0.05 percent points higher from the average annual rate of change recorded in May 2019 (13.37) percent.



All Items Less Farm Produce

The "All items less farm produce" or Core inflation, which excludes the prices of volatile agricultural produce stood at 8.8 percent in June 2019, down by 0.2 percent when compared with 9.0 percent recorded in May 2019.

On month-on-month basis, the core sub-index increased by 0.85 percent in June 2019. This was up by 0.10 percent when compared with 0.75 percent recorded in May 2019.

The highest increases were recorded in prices of Medical and hospital services, Cleaning, repair and hire of clothing, Repair and hire of footwear, Repair of household appliances, Actual and imputed rentals for housing, Major household appliances whether electronic or not and Tobacco.

The average 12-month annual rate of change of the index was 9.64 percent for the twelve-month period ending June 2019; this is 0.13 percent points lower than 9.77 percent recorded in May 2019.

State Profiles

In analysing price movements under this section, note that the CPI is weighted by consumption expenditure patterns which differ across states. Accordingly, the weight assigned to a particular food or non-food item may differ from state to state making interstate comparisons of consumption basket inadvisable and potentially misleading.

All Items Inflation

In June 2019, all items inflation on year on year basis was highest in Bauchi (15.40%), Kebbi (14.73%) and Kaduna (13.91%), while Delta (9.46%), Kwara (9.01%) and Bayelsa (8.56%) recorded the slowest rise in headline Year on Year inflation.

On month on month basis however, June 2019 all items inflation was highest in River (2.28%), Lagos (1.72%) and Cross River (1.57%), while Bayelsa (0.42%), Kaduna (0.37%) and sokoto (0.31%) recorded the slowest rise.

Food Inflation

In June 2019, food inflation on a year on year basis was highest in Kaduna (17.50%), Kebbi (16.96%) and Ondo (16.44%), while Abia (10.84%), Bayelsa (9.97%) and Kogi (9.81%) recorded the slowest rise.

On month on month basis however, June 2019 food inflation was highest in Kogi (3.20%), River (2.96%) and Osun (2.58%), while Anambra (0.47%), Yobe (0.33%) and Kaduna (0.26%) recorded the slowest rise.

**Table 5 Combined Urban And Rural State Consumer Price Index
(Base Period: November 2009 = 100)**

	Jun-18		May-19		Jun-19	
State	Food	All	Food	All	Food	All
		Items		Items		Items
Abia	285.1	264.5	312.5	288.3	316.0	290.9
Abuja	275.5	259.7	309.2	285.6	316.4	290.2
Adamawa	275.5	254.6	312.4	281.4	315.6	285.0
Akwa Ibom	279.2	257.8	309.7	282.4	315.3	285.7
Anambra	280.0	262.8	314.4	291.6	315.9	294.0
Bauchi	262.8	274.7	291.6	312.9	294.0	317.0
Bayelsa	294.0	270.2	320.6	292.1	323.3	293.3
Benue	278.1	257.1	313.5	284.3	316.5	286.9
Borno	272.3	253.8	310.6	279.6	314.2	282.2
Cross River	279.9	251.0	310.4	271.4	315.0	275.7
Delta	286.5	255.6	315.8	276.9	317.7	279.8
Ebonyi	276.5	259.4	311.9	287.6	314.7	289.9
Edo	274.9	266.5	313.8	294.9	319.7	298.4
Ekiti	272.7	244.1	307.9	270.2	311.3	272.1
Enugu	278.1	250.4	312.5	276.9	317.8	279.9
Gombe	272.1	257.7	309.7	287.2	313.8	290.0
Imo	273.0	242.3	307.8	266.4	314.2	269.3
Jigawa	274.1	258.2	306.7	287.4	310.2	290.0
Kaduna	274.6	262.3	321.8	297.7	322.7	298.8
Kano	276.0	262.1	315.3	293.1	318.0	294.7
Katsina	278.6	243.7	309.2	267.4	312.3	270.5
Kebbi	275.0	265.7	318.2	302.1	321.6	304.8
Kogi	290.1	275.4	308.7	296.8	318.6	302.5
Kwara	277.9	326.4	313.1	352.4	317.9	355.8
Lagos	283.4	271.4	319.1	299.4	325.5	304.6
Nassarawa	277.9	263.0	316.3	292.2	318.4	293.5
Niger	275.9	264.6	313.4	295.5	317.8	297.9
Ogun	282.1	277.7	320.4	307.0	325.9	310.2
Ondo	277.0	263.0	318.1	294.6	322.5	297.8
Osun	279.9	264.1	308.7	287.6	316.6	291.9
Oyo	284.4	273.4	316.5	298.9	320.8	302.4
Plateau	274.7	263.2	308.4	291.5	312.5	294.7
Rivers	284.0	259.7	310.3	282.8	319.4	289.2
Sokoto	272.0	258.5	311.2	287.7	313.2	288.6
Taraba	276.8	252.8	312.3	281.8	316.7	283.7
Yobe	279.0	263.9	312.7	292.4	313.7	293.8
Zamfara	273.5	259.4	313.2	291.4	315.7	293.7

Note: Indices may not be used for inter-state price comparison because market baskets differ from state to state

HEADLINE CPI IN JUNE 2019 ROSE BY

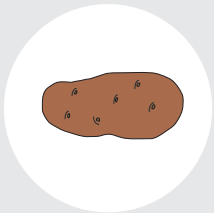
11.22%

**YEAR-ON-YEAR
(FROM 11.40% IN MAY 2019)**

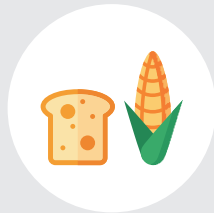
1.07%

**MONTH-ON-MONTH
(FROM 1.11% IN MAY 2019)**

HIGHEST INCREASE RECORDED IN



**POTATOES, YAM
AND OTHER TUBERS**



BREAD AND CEREALS



VEGETABLES



FRUITS



OIL AND FATS

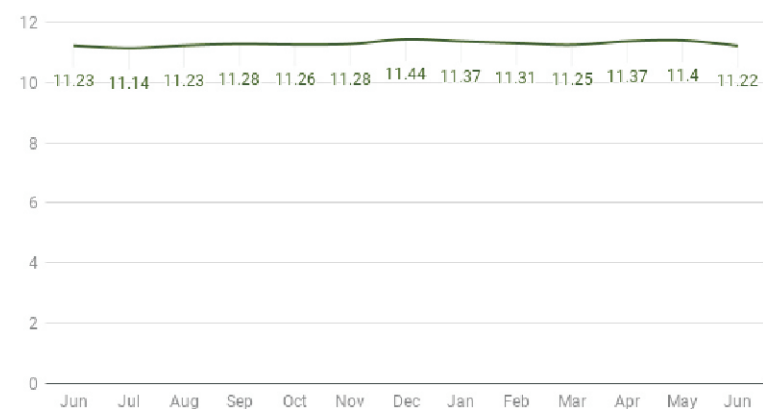


FISH



MEAT

CPI (%) June 2018 to June 2019



The CPI (Consumer Price Index) measures the average change over time in prices of goods and services consumed by people for day-to-day living i.e it measures the inflation rate

FOOD SUB-INDEX IN JUNE 2019 ROSE BY

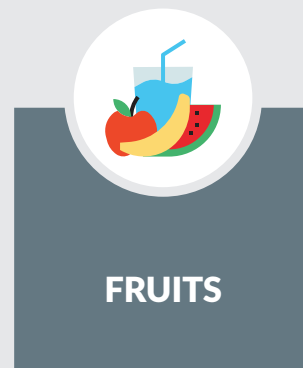
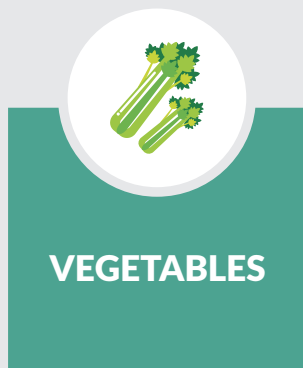
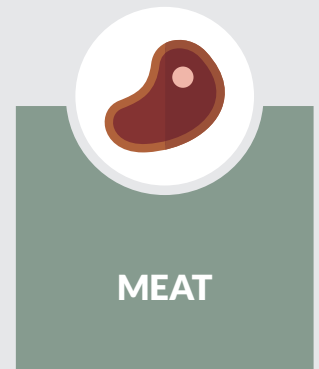
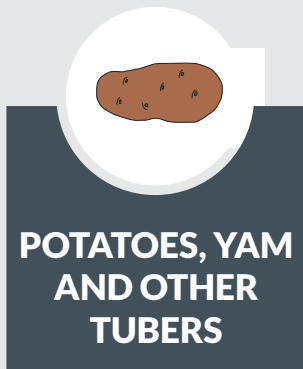
13.56%

YEAR-ON-YEAR
(FROM 13.79% IN MAY 2019)

1.36%

MONTH-ON-MONTH
(FROM 1.41% IN MAY 2019)

HIGHEST INCREASE RECORDED IN



The CPI (Consumer Price Index) measures the average change over time in prices of goods and services consumed by people for day-to-day living i.e it measures the inflation

CORE SUB-INDEX IN JUNE 2019 ROSE BY

8.80%

**YEAR-ON-YEAR
(FROM 9.00% IN MAY 2019)**

0.85%

**MONTH-ON-MONTH
(FROM 0.75% IN MAY 2019)**

HIGHEST INCREASE RECORDED IN



TOBACCO



**CLEANING, REPAIR AND
HIRE OF CLOTHING**



**ACTUAL AND IMPUTED
RENT FOR HOUSING**



**MAJOR HOUSEHOLD
APPLIANCES WHETHER
ELECTRONIC OR NOT**



**MEDICAL AND
HOSPITAL SERVICES**



**REPAIR OF
HOUSEHOLD
APPLIANCE**



**REPAIR AND HIRE
OF FOOTWEAR**

The CPI (Consumer Price Index) measures the average change over time in prices of goods and services consumed by people for day-to-day living i.e it measures the inflation rate

URBAN INDEX IN JUNE 2019 ROSE BY



11.61%

YEAR-ON-YEAR
(FROM 11.76% IN MAY 2019)

1.10%

MONTH-ON-MONTH
(FROM 1.15% IN MAY 2019)

RURAL INDEX IN MARCH 2019 ROSE BY



10.87%

YEAR-ON-YEAR
(FROM 11.08% IN MAY 2019)

1.05%

MONTH-ON-MONTH
(FROM 1.07% IN MAY 2019)

The CPI (Consumer Price Index) measures the average change over time in prices of goods and services consumed by people for day-to-day living i.e it measures the inflation rate

STATE PROFILES

ALL ITEMS INFLATION

All Times Inflation on a YoY Basis Was Highest In

BAUCHI ▶ **15.40%**

KEBBI ▶ **14.73%**

KADUNA ▶ **13.91%**

Slowest Rise in Headline Inflation

DELTA ▶ **9.46%**

KWARA ▶ **9.01%**

BAYELSA ▶ **8.56%**

MONTH ON MONTH

All Times Inflation on a MoM Basis Was Highest In

RIVERS ▶ **2.28%**

LAGOS ▶ **1.72%**

CROSS RIVER ▶ **1.57%**

Slowest Rise in Headline Inflation

BAYELSA ▶ **0.42%**

KADUNA ▶ **0.37%**

SOKOTO ▶ **0.31%**

STATE PROFILES

FOOD INFLATION

Food Inflation on a YoY basis Was Highest In

KADUNA ▶ **17.50%**

KEBBI ▶ **16.96%**

ONDO ▶ **16.44%**

Slowest Rise in Food Inflation

ABIA ▶ **10.84%**

BAYELSA ▶ **9.97%**

KOGI ▶ **9.81%**

MONTH ON MONTH

Food Inflation on a MoM Basis Was Highest In

KOGI ▶ **3.20%**

RIVERS ▶ **2.96%**

OSUN ▶ **2.58%**

Slowest Rise in Food Inflation

ANAMBRA ▶ **0.47%**

YOBE ▶ **0.33%**

KADUNA ▶ **0.26%**

Table 1 Composite Consumer Price Index (Base November 2009 = 100)

		All Items Index				All Items less Farm Produce					Food						
		Monthly	Month-on change (%)	Year-on change (%)	12-Month average change (%)	Monthly	Month-on change (%)	Year-on change (%)	12-Month average change (%)	Monthly	12-Month Average	Month-on change (%)	Year-on change (%)	12-Month average change (%)			
Weights		1000.00				513.10					507.06						
1995	Jan	14.4				14.7				20.6							95-Jan
	Feb	15.0	4.6			15.3	4.0			21.2		2.9					Feb
	Mar	15.6	3.6			15.8	3.0			21.9		3.6					Mar
	Apr	17.0	9.0			16.7	6.0			23.3		6.1					Apr
	May	18.0	6.2			17.1	2.0			23.8		2.1					May
	Jun	18.8	4.5			17.4	2.0			24.4		2.8					Jun
	Jul	19.4	3.3			17.9	2.5			25.2		3.0					Jul
	Aug	20.1	3.5			18.4	2.8			25.8		2.6					Aug
	Sep	20.5	1.7			19.0	3.7			26.4		2.3					Sep
	Oct	20.0	-2.5			19.4	1.8			27.0		2.4					Oct
	Nov	20.2	1.4			19.7	1.4			27.5		1.9					Nov
	Dec	21.0	3.6			20.1	2.4			28.2	24.6	2.2					Dec
1996	Jan	21.2	1.1	48		20.7	2.7	40.2		28.4	25.3	1.0	38.4				96-Jan
	Feb	21.6	1.8	44		21.1	2.1	37.7		29.0	25.9	2.1	37.3				Feb
	Mar	22.1	2.3	42		21.5	1.9	36.1		29.6	26.5	1.9	35.0				Mar
	Apr	22.4	1.3	32		21.7	0.9	29.6		29.9	27.1	0.9	28.4				Apr
	May	23.6	5.5	31		22.0	1.5	28.9		30.4	27.7	1.7	27.9				May
	Jun	24.2	2.8	29		22.2	0.7	27.2		30.3	28.1	-0.2	24.2				Jun
	Jul	25.2	3.8	30		22.5	1.4	26.0		31.0	28.6	2.1	23.1				Jul
	Aug	25.5	1.3	27		22.6	0.3	23.0		31.2	29.1	0.8	20.9				Aug
	Sep	25.3	-0.7	24		22.9	1.2	20.1		31.5	29.5	1.1	19.4				Sep
	Oct	24.9	-1.7	25		22.7	-0.6	17.2		31.4	29.9	-0.4	16.1				Oct
	Nov	24.4	-1.7	21		22.8	0.5	16.1		31.5	30.2	0.3	14.3				Nov
	Dec	24.0	-2.0	14	29.3	23.2	1.7	15.3	25.7	31.8	30.5	1.0	12.9	24.0			Dec
1997	Jan	24.2	1.1	14	26.7	23.1	-0.5	11.7	23.4	31.7	30.8	-0.3	11.4	21.8			97-Jan
	Feb	24.5	1.0	13	24.4	23.0	-0.5	8.9	21.0	31.6	31.0	-0.3	8.8	19.6			Feb
	Mar	25.1	2.7	14	22.3	23.5	2.3	9.3	18.9	32.6	31.2	3.0	10.0	17.6			Mar
	Apr	26.2	4.2	17	21.2	23.6	0.3	8.6	17.1	32.4	31.4	-0.3	8.6	16.0			Apr
	May	26.6	1.7	13	19.7	23.6	0.2	7.2	15.4	32.6	31.6	0.6	7.4	14.4			May
	Jun	27.1	1.7	12	18.2	23.7	0.2	6.6	13.7	32.8	31.8	0.6	8.2	13.1			Jun
	Jul	27.3	0.7	8	16.4	23.7	-0.0	5.1	12.1	32.9	32.0	0.1	6.2	11.8			Jul
	Aug	27.5	0.7	8	14.8	23.7	-0.0	4.8	10.6	32.9	32.1	0.1	5.5	10.5			Aug
	Sep	27.0	-1.8	7	13.4	23.9	1.0	4.5	9.4	33.2	32.3	0.8	5.2	9.4			Sep
	Oct	26.5	-1.9	6	12.0	24.1	1.0	6.1	8.5	33.4	32.4	0.8	6.5	8.6			Oct
	Nov	26.4	-0.1	8	11.0	24.3	0.8	6.5	7.8	33.6	32.6	0.5	6.8	8.1			Nov
	Dec	26.4	-0.1	10	10.7	24.5	0.8	5.6	7.0	33.8	32.8	0.5	6.3	7.5			Dec
1998	Jan	26.4	-0.2	9	10.2	24.6	0.4	6.6	6.6	34.0	33.0	0.7	7.4	7.2			98-Jan
	Feb	26.5	0.4	8	9.8	24.8	0.9	8.1	6.6	33.9	33.2	-0.5	7.1	7.1			Feb
	Mar	26.9	1.5	7	9.3	25.1	1.2	7.0	6.4	33.7	33.3	-0.4	3.6	6.5			Mar
	Apr	27.5	2.4	5	8.3	25.3	0.6	7.3	6.3	33.7	33.4	0.1	4.0	6.2			Apr
	May	27.8	1.1	4	7.6	25.7	1.7	8.9	6.4	34.0	33.5	0.8	4.2	5.9			May
	Jun	28.8	3.5	6	7.2	27.0	5.0	14.2	7.1	34.3	33.6	0.8	4.5	5.6			Jun
	Jul	29.6	2.9	9	7.2	27.1	0.4	14.6	7.9	33.7	33.7	-1.6	2.7	5.3			Jul
	Aug	29.5	-0.4	7	7.2	27.5	1.6	16.4	8.9	34.4	33.8	1.8	4.4	5.2			Aug
	Sep	28.8	-2.2	7	7.2	28.0	1.8	17.4	10.0	34.4	33.9	0.0	3.6	5.1			Sep
	Oct	28.8	0.0	9	7.5	28.6	1.8	18.4	11.0	34.5	34.0	0.4	3.3	4.8			Oct
	Nov	29.3	1.6	11	7.7	30.9	8.1	26.9	12.7	34.6	34.1	0.3	3.0	4.5			Nov
	Dec	29.6	0.9	12	7.9	30.9	0.0	26.0	14.4	35.2	34.2	1.8	4.3	4.3			Dec
1999	Jan	30.1	1.9	14	8.3	32.0	3.6	29.9	16.4	35.3	34.3	0.2	3.8	4.0			99-Jan
	Feb	30.3	0.4	14	8.8	32.0	-0.1	28.7	18.1	35.2	34.4	-0.4	3.8	3.8			Feb
	Mar	30.5	0.8	14	9.4	31.8	-0.5	26.5	19.8	35.3	34.6	0.5	4.8	3.9			Mar
	Apr	30.7	0.6	12	9.9	31.8	0.0	25.8	21.3	35.3	34.7	0.0	4.7	3.9			Apr
	May	31.0	0.9	11	10.5	31.9	0.2	24.0	22.5	35.9	34.8	1.7	5.7	4.0			May
	Jun	31.2	0.7	8	10.6	31.9	-0.1	17.9	22.8	36.3	35.0	1.0	5.9	4.2			Jun
	Jul	30.8	-1.2	4	10.2	31.5	-1.0	16.3	22.8	36.3	35.2	-0.1	7.5	4.6			Jul
	Aug	29.7	-3.5	1	9.6	31.1	-1.3	13.1	22.4	36.2	35.4	-0.3	5.3	4.6			Aug
	Sep	29.5	-0.7	2	9.2	30.5	-2.2	8.6	21.6	36.2	35.5	-0.0	5.3	4.8			Sep
	Oct	29.3	-0.7	1	8.5	30.5	0.0	6.7	20.5	36.3	35.7	0.5	5.3	4.9			Oct
	Nov	29.3	0.1	0	7.6	30.6	0.4	-0.8	17.9	36.6	35.9	0.7	5.8	5.2			Nov
	Dec	29.6	1.1	0	6.6	31.3	2.3	1.4	15.7	37.0	36.0	1.0	5.0	5.2			Dec

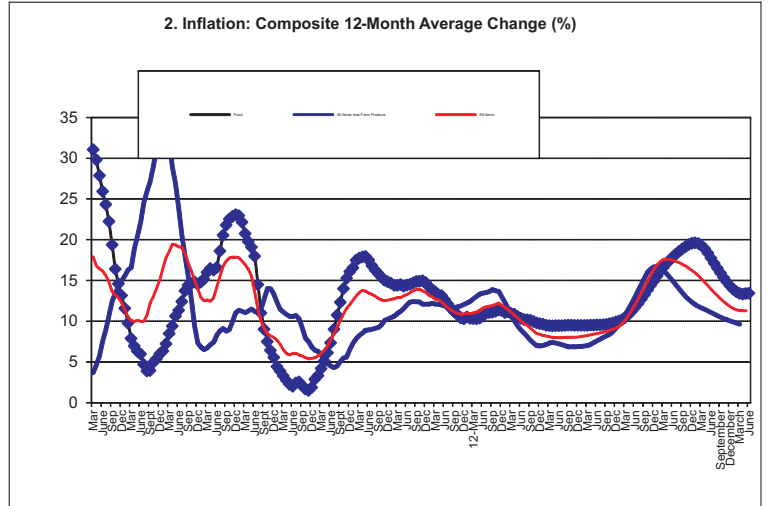
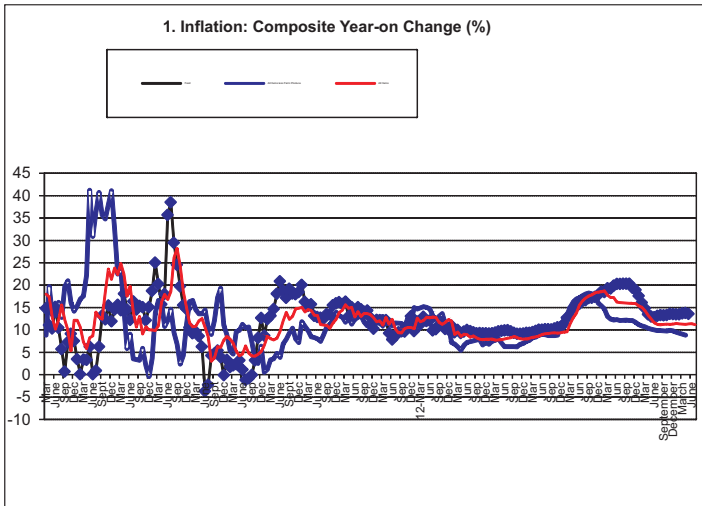
Table 2 Composite Consumer Price Index (Base November 2009 = 100)

2000	Jan	29.4	-0.8	-2	5.2	31.2	-0.4	-2.5	12.9	29.1	35.5	-21.2	-17.5	3.4		00-Jan
2000	Feb	29.7	1.2	-1.7	3.9	31.3	0.4	-2.1	10.4	29.6	35.0	1.6	-15.8	1.7		Feb
	Mar	30.1	1.1	-1	2.7	31.9	1.8	0.2	8.3	29.8	34.6	0.6	-15.7	0.0		Mar
	Apr	30.7	2.0	0	1.8	32.5	1.9	2.0	6.4	30.3	34.1	1.9	-14.1	-1.6		Apr
	May	31.6	3.2	2	1.1	33.8	4.0	5.8	5.1	31.0	33.7	2.3	-13.6	-3.2		May
	Jun	33.0	4.3	6	0.9	36.3	7.5	13.9	4.9	31.6	33.3	1.7	-13.0	-4.8		Jun
	Jul	32.8	-0.5	7	1.2	36.0	-0.8	14.1	4.9	31.6	32.9	-0.0	-13.0	-6.5		Jul
	Aug	33.6	2.3	13	2.2	37.5	4.3	20.5	5.6	31.8	32.6	0.7	-12.1	-7.9		Aug
	Sep	34.1	1.4	16	3.3	39.4	4.9	29.2	7.3	31.4	32.2	-1.2	-13.2	-9.4		Sep
	Oct	34.3	0.6	17.1	4.5	39.9	1.4	31.0	9.3	31.4	31.8	0.1	-13.5	-11.0		Oct
	Nov	33.8	-1.4	15.4	5.8	38.7	-3.0	26.6	11.5	31.4	31.3	-0.0	-14.2	-12.6		Nov
	Dec	33.9	0.4	14.5	6.9	38.4	-0.8	22.7	13.3	31.8	30.9	1.2	-14.1	-14.1		Dec
2001	Jan	34.6	1.9	17.6	8.6	38.6	0.5	23.8	15.5	32.7	31.2	2.8	12.2	-12.1		01-Jan
	Feb	35.3	2.0	18.6	10.3	38.9	0.8	24.3	17.7	33.7	31.5	3.1	13.8	-9.9		Feb
	Mar	35.5	0.7	18.2	11.9	38.0	-2.2	19.4	19.3	34.6	31.9	2.8	16.3	-7.6		Mar
	Apr	37.8	6.3	23.2	13.9	37.7	-0.8	16.2	20.5	38.4	32.6	11.0	26.7	-4.5		Apr
	May	38.9	2.9	23.0	15.7	37.6	-0.3	11.3	20.9	40.4	33.4	5.2	30.2	-1.0		May
	Jun	38.3	-1.5	16.1	16.6	34.9	-7.1	-3.8	19.2	41.2	34.2	1.9	30.5	2.6		Jun
	Jul	39.1	2.0	19.0	17.7	36.4	4.2	1.2	17.9	42.0	35.1	1.9	33.0	6.5		Jul
	Aug	39.9	2.1	18.7	18.1	37.6	3.2	0.1	16.0	42.6	36.0	1.4	33.9	10.4		Aug
	Sep	40.6	1.7	19.1	18.4	37.2	-1.0	-5.4	12.9	43.8	37.0	2.9	39.5	15.0		Sep
	Oct	40.9	0.8	19.3	18.6	38.8	4.3	-2.8	10.0	43.1	38.0	-1.7	37.1	19.5		Oct
	Nov	39.7	-2.9	17.4	18.7	38.3	-1.2	-1.0	7.8	41.3	38.8	-4.1	31.5	23.8		Nov
	Dec	39.5	-0.4	16.5	18.9	38.5	0.3	0.1	6.0	41.0	39.6	-0.8	28.9	28.0		Dec
2002	Jan	41.0	3.7	18.6	18.9	40.5	5.3	4.9	4.7	42.3	40.4	3.2	29.3	29.4		02-Jan
	Feb	41.6	1.6	18.0	18.9	40.6	0.4	4.5	3.3	43.0	41.1	1.9	27.8	30.4		Feb
	Mar	41.7	0.2	17.4	18.8	40.7	0.2	7.1	2.4	43.3	41.9	0.6	25.0	31.0		Mar
	Apr	42.6	2.2	12.8	17.9	41.2	1.1	9.1	2.0	44.1	42.3	1.9	14.8	29.8		Apr
	May	42.8	0.6	10.2	16.8	40.9	-0.6	8.9	1.9	44.9	42.7	1.7	11.1	27.9		May
	June	43.0	0.3	12.2	16.4	41.8	2.2	19.7	3.7	45.4	43.1	1.2	10.3	25.9		June
	July	45.2	5.1	15.6	16.2	41.3	-1.2	13.4	4.7	48.3	43.6	6.3	15.1	24.3		July
	Aug	44.8	-0.8	12.3	15.6	42.5	3.0	13.2	5.7	47.0	44.0	-2.6	10.5	22.2		Aug
	Sep	44.6	-0.4	10.0	14.8	43.2	1.6	16.2	7.6	46.3	44.2	-1.5	5.7	19.4		Sep
	Oct	43.1	-3.4	5.4	13.6	43.8	1.3	12.8	8.9	43.4	44.2	-6.3	0.7	16.4		Oct
	Nov	44.5	3.3	12.2	13.2	45.9	4.8	19.7	10.7	44.3	44.5	2.1	7.3	14.6		Nov
	Dec	44.3	-0.4	12.2	12.9	46.5	1.4	21.0	12.5	44.7	44.8	0.9	9.1	13.1		Dec
2003	Jan	45.3	2.2	10.6	12.3	47.0	1.0	16.1	13.4	45.4	45.0	1.6	7.5	11.6		03-Jan
	Feb	44.6	-1.5	7.3	11.4	46.4	-1.3	14.2	14.3	44.5	45.2	-2.0	3.5	9.7		Feb
	Mar	44.1	-1.1	5.9	10.5	47.0	1.3	15.4	15.0	43.3	45.2	-2.7	0.1	7.9		Mar
	Apr	46.1	4.5	8.3	10.1	48.1	2.5	16.9	15.6	45.6	45.3	5.2	3.3	6.9		Apr
	May	46.6	0.9	8.7	10.0	48.1	-0.0	17.6	16.3	46.4	45.4	1.7	3.3	6.3		May
	June	49.0	5.2	14.0	10.1	51.1	6.2	22.2	16.6	48.3	45.6	4.1	6.2	6.0		June
	Jul	51.0	4.1	12.9	10.0	58.3	14.1	41.2	19.0	48.4	45.6	0.2	0.1	4.7		July
	Aug	50.3	-1.3	12.4	10.0	55.7	-4.5	30.9	20.5	47.5	45.7	-1.9	0.9	3.9		Aug
	Sep	52.8	4.9	18.4	10.7	58.9	5.8	36.3	22.2	49.2	45.9	3.7	6.2	4.0		Sept
	Oct	53.2	0.8	23.6	12.3	61.6	4.6	40.7	24.6	49.1	46.4	-0.2	13.2	5.0		Oct
	Nov	54.0	1.4	21.3	13.0	62.2	1.0	35.7	26.0	49.8	46.9	1.4	12.4	5.4		Nov
	Dec	54.9	1.7	23.8	14.0	62.7	0.8	34.8	27.2	51.6	47.4	3.7	15.4	6.0		Dec
2004	Jan	55.5	1.0	22.4	15.0	64.9	3.4	38.0	29.0	50.9	47.9	-1.5	11.9	6.3		04-Jan
	Feb	55.7	0.5	24.8	16.5	65.5	0.9	41.1	31.2	51.0	48.4	0.3	14.5	7.2		Feb
	Mar	54.1	-3.0	22.5	17.8	62.3	-4.8	32.6	32.6	50.1	49.0	-1.8	15.6	8.5		Mar
	Apr	54.2	0.3	17.5	18.5	59.0	-5.4	22.5	32.9	52.2	49.5	4.1	14.4	9.4		Apr
	May	55.8	2.9	19.8	19.4	59.4	0.7	23.4	33.2	54.7	50.2	4.9	18.1	10.6		May
	June	55.9	0.2	14.1	19.4	58.6	-1.3	14.7	32.3	55.3	50.8	1.0	14.5	11.3		June
	July	56.4	1.0	10.7	19.1	61.7	5.3	5.8	29.0	54.3	51.3	-1.8	12.2	12.4		July
	Aug	56.9	0.8	13.0	19.1	60.7	-1.6	9.1	26.9	55.2	52.0	1.7	16.3	13.7		Aug
	Sep	57.6	1.3	9.1	18.2	61.0	0.5	3.6	23.9	56.4	52.5	2.1	14.6	14.4		Sep
	Oct	59.0	2.3	10.7	17.1	63.7	4.4	3.4	20.7	56.7	53.2	0.5	15.4	14.6		Oct
	Nov	59.4	0.8	10.0	16.1	64.3	0.9	3.2	17.9	57.3	53.8	1.1	15.1	14.8		Nov
	Dec	60.4	1.7	10.0	15.0	66.4	3.4	5.9	15.5	57.9	54.3	1.0	12.1	14.5		Dec

2005	Jan	60.9	0.9	9.8	14.0	66.1	-0.4	2.0	12.6	58.5	55.0	1.2	15.1	14.8		05-Jan
	Feb	61.8	1.5	10.9	12.9	65.2	-1.4	-0.4	9.4	60.6	55.8	3.5	18.7	15.2		Feb
	Mar	62.9	1.7	16.3	12.5	64.6	-0.9	3.6	7.3	62.6	56.8	3.4	25.0	16.0		Mar
	Apr	63.9	1.7	17.9	12.6	67.1	3.9	13.8	6.8	62.7	57.7	0.2	20.3	16.5		Apr
	May	65.2	1.9	16.8	12.5	69.2	3.2	16.6	6.5	63.4	58.4	1.0	15.7	16.3		May
	Jun	66.3	1.7	18.6	12.9	68.1	-1.6	16.2	6.7	65.3	59.2	3.0	18.0	16.6		June
	Jul	71.2	7.4	26.1	14.2	68.3	0.3	10.7	7.1	73.7	60.8	12.8	35.7	18.6		July
	Aug	72.9	2.5	28.2	15.5	68.1	-0.4	12.1	7.4	76.5	62.6	3.8	38.5	20.5		Aug
	Sep	71.6	-1.8	24.3	16.8	69.9	2.7	14.6	8.3	73.0	64.0	-4.5	29.5	21.8		Sep
	Oct	69.9	-2.4	18.6	17.4	69.7	-0.3	9.4	8.8	70.6	65.2	-3.3	24.6	22.5		Oct
	Nov	68.4	-2.2	15.1	17.8	68.6	-1.5	6.8	9.1	68.6	66.1	-2.8	19.7	22.9		Nov
	Dec	67.4	-1.5	11.6	17.9	68.0	-0.9	2.4	8.8	66.8	66.9	-2.5	15.5	23.1		Dec
2006	Jan	67.4	0.1	10.7	17.9	69.0	1.4	4.3	9.0	67.1	67.6	0.5	14.7	22.9		06-Jan
	Feb	68.5	1.6	10.8	17.8	72.4	5.0	11.1	10.0	66.9	68.1	-0.3	10.5	22.1		Feb
	Mar	70.4	2.8	12.0	17.4	75.1	3.7	16.3	11.1	68.4	68.6	2.3	9.3	20.7		Mar
	Apr	72.0	2.2	12.6	16.9	78.3	4.2	16.6	11.3	68.8	69.1	0.5	9.6	19.8		Apr
	May	72.0	0.1	10.5	16.4	79.3	1.3	14.5	11.2	68.8	69.5	0.1	8.6	19.1		May
	Jun	71.9	-0.2	8.5	15.5	77.4	-2.4	13.6	11.0	69.4	69.9	0.8	6.2	18.0		June
	Jul	73.3	2.0	3.0	13.5	77.6	0.3	13.6	11.3	70.9	69.7	2.3	-3.7	14.5		July
	Aug	75.7	3.2	3.7	11.4	77.9	0.4	14.5	11.5	74.7	69.5	5.3	-2.3	11.0		August
	Sep	76.1	0.6	6.3	10.0	77.3	-0.8	10.6	11.2	76.1	69.8	1.8	4.3	9.0		Sept
	Oct	74.2	-2.5	6.1	9.0	76.0	-1.7	9.0	11.1	73.9	70.0	-2.9	4.7	7.5		Oct
	Nov	73.7	-0.7	7.8	8.5	76.9	1.3	12.1	11.6	72.3	70.4	-2.2	5.4	6.4		Nov
	Dec	73.1	-0.8	8.5	8.2	79.7	3.6	17.3	12.8	69.4	70.6	-4.0	3.9	5.6		Dec
2007	Jan	72.8	-0.4	8.0	8.0	82.3	3.2	19.3	14.0	67.1	70.6	-3.4	-0.1	4.4		07-Jan
	Feb	73.4	0.8	7.1	7.7	80.4	-2.3	11.0	14.0	69.1	70.7	3.1	3.3	3.9		Feb
	Mar	74.1	1.0	5.2	7.2	81.8	1.7	8.9	13.4	69.6	70.8	0.7	1.7	3.3		Mar
	Apr	75.0	1.2	4.2	6.5	82.5	0.8	5.4	12.4	70.2	71.0	0.9	2.1	2.7		Apr
	May	75.4	0.5	4.6	6.0	83.0	0.6	4.6	11.5	70.5	71.1	0.4	2.4	2.2		May
	Jun	76.5	1.5	6.4	5.9	84.8	2.3	9.6	11.1	71.6	71.3	1.6	3.2	2.0		June
	Jul	76.9	0.5	4.8	6.0	85.3	0.6	9.9	10.8	71.7	71.4	0.2	1.1	2.4		July
	Aug	78.9	2.6	4.2	6.1	86.7	1.6	11.2	10.6	73.9	71.3	3.0	-1.2	2.5		Aug
	Sep	79.3	0.5	4.1	5.9	85.4	-1.5	10.5	10.6	75.5	71.2	2.2	-0.8	2.1		Sep
	Oct	77.6	-2.1	4.6	5.7	84.1	-1.5	10.7	10.7	73.9	71.2	-2.2	-0.1	1.7		Oct
	Nov	77.5	-0.1	5.2	5.5	82.6	-1.8	7.4	10.3	74.6	71.4	1.0	3.2	1.5		Nov
	Dec	77.9	0.6	6.6	5.4	82.6	0.0	3.6	9.2	75.1	71.9	0.7	8.2	1.9		Dec
2008	Jan	79.1	1.4	8.6	5.5	84.4	2.1	2.5	7.9	75.5	72.6	0.5	12.6	2.9		08-Jan
	Feb	79.3	0.3	8.0	5.5	85.5	1.4	6.4	7.5	75.2	73.1	-0.5	8.7	3.3		Feb
	Mar	79.9	0.8	7.8	5.8	82.2	-3.9	0.5	6.8	78.2	73.8	4.1	12.4	4.2		Mar
	Apr	81.1	1.6	8.2	6.1	83.5	1.5	1.2	6.4	79.4	74.6	1.5	13.1	5.1		Apr
	May	82.7	1.9	9.7	6.5	85.7	2.7	3.3	6.3	80.8	75.4	1.7	14.7	6.1		May
	Jun	85.7	3.7	12.0	7.0	87.9	2.5	3.6	5.8	84.5	76.5	4.6	18.1	7.4		June
	Jul	87.6	2.2	14.0	7.8	89.4	1.7	4.8	5.4	86.7	77.8	2.6	20.9	9.0		July
	Aug	88.6	1.2	12.4	8.5	90.0	0.7	3.9	4.8	87.7	78.9	1.2	18.8	10.7		August
	Sep	89.6	1.1	13.0	9.2	91.3	1.4	6.9	4.5	88.5	80.0	0.8	17.1	12.3		Sept
	Oct	89.0	-0.6	14.7	10.1	90.8	-0.6	7.9	4.3	88.0	81.2	-0.5	19.2	14.0		Oct
	Nov	89.0	-0.05	14.8	10.9	90.3	-0.5	9.3	4.5	88.1	82.3	0.1	18.1	15.3		Nov
	Dec	89.7	0.8	15.1	11.6	91.2	1.0	10.4	5.1	88.6	83.4	0.6	18.0	16.1		Dec
2009	Jan	90.2	0.5	14.0	12.0	91.1	-0.1	8.0	5.5	89.5	84.6	0.9	18.4	16.5		09-Jan
	Feb	90.8	0.7	14.6	12.6	91.7	0.6	7.2	5.6	90.2	85.9	0.8	20.0	17.5		Feb
	Mar	91.4	0.6	14.4	13.1	92.0	0.3	11.8	6.5	90.9	86.9	0.8	16.2	17.7		Mar
	Apr	91.9	0.6	13.3	13.5	92.5	0.6	10.9	7.3	91.6	87.9	0.7	15.3	17.9		Apr
	May	93.6	1.8	13.2	13.8	94.2	1.8	9.9	7.8	93.5	89.0	2.0	15.7	17.9		May
	June	95.3	1.8	11.2	13.7	95.3	1.2	8.5	8.3	95.6	89.9	2.2	13.1	17.5		June
	July	97.3	2.1	11.1	13.4	96.8	1.5	8.3	8.6	97.9	90.8	2.4	12.9	16.8		July
	Aug	98.4	1.1	11.0	13.3	97.3	0.5	8.0	8.9	98.9	91.8	1.1	12.7	16.3		Aug
	Sep	98.9	0.5	10.4	13.1	98.1	0.8	7.4	8.9	99.5	92.7	0.6	12.5	15.9		Sep
	Oct	99.4	0.5	11.6	12.8	98.9	0.8	8.9	9.0	99.9	93.7	0.4	13.5	15.4		Oct
	Nov	100.0	0.7	12.4	12.6	100.0	1.1	10.7	9.1	100.0	94.7	0.1	13.5	15.0		Nov
	Dec	102.2	2.2	13.9	12.5	101.5	1.5	11.2	9.2	102.4	95.8	2.4	15.5	14.8		Dec

2010	Jan	103.1	1.0	14.4	12.6	102.1	0.6	12.1	9.6	103.7	97.0	1.3	15.9	14.7		10-Jan
	Feb	105.0	1.9	15.6	12.7	104.5	2.3	14.0	10.1	104.8	98.2	1.1	16.2	14.4		Feb
	Mar	104.9	-0.1	14.8	12.8	104.1	-0.4	13.2	10.3	105.3	99.4	0.4	15.8	14.4		Mar
	Apr	105.7	0.8	15.0	12.9	104.4	0.3	12.8	10.4	106.6	100.7	1.2	16.3	14.5		Apr
	May	105.7	-0.04	12.9	12.9	105.2	0.8	11.7	10.6	105.7	101.7	-0.8	13.0	14.3		May
	Jun	108.8	2.91	14.1	13.1	107.4	2.1	12.7	10.9	110.0	102.9	4.1	15.1	14.4		Jun
	Jul	109.9	1.08	13.0	13.3	107.7	0.3	11.3	11.2	111.6	104.0	1.5	14.0	14.5		Jul
	Aug	111.9	1.76	13.7	13.5	109.3	1.5	12.4	11.5	113.8	105.3	2.0	15.1	14.7		Aug
	Sep	112.4	0.46	13.6	13.8	110.7	1.3	12.8	12.0	114.0	106.5	0.1	14.6	14.9		Sep
	Oct	112.7	0.30	13.4	13.9	111.9	1.1	13.2	12.3	114.0	107.7	-0.0	14.1	14.9		Oct
	Nov	112.8	0.04	12.8	13.9	111.7	-0.1	11.7	12.4	114.4	108.9	0.3	14.4	15.0		Nov
	Dec	114.2	1.29	11.8	13.7	112.6	0.7	10.9	12.4	115.4	109.9	0.9	12.7	14.7		Dec
2011	Jan	115.6	1.20	12.1	13.5	114.5	1.7	12.1	12.4	114.3	110.8	-0.9	10.3	14.2		11-Jan
	Feb	116.7	0.96	11.1	13.2	115.5	0.9	10.6	12.1	117.7	111.9	2.9	12.2	13.9		Feb
	Mar	118.3	1.37	12.8	13.0	117.5	1.7	12.8	12.1	118.1	113.0	0.4	12.2	13.6		Mar
	Apr	117.7	-0.54	11.3	12.7	117.9	0.3	12.9	12.1	119.0	114.0	0.7	11.6	13.2		Apr
	May	118.7	0.91	12.4	12.6	118.9	0.9	13.0	12.2	118.5	115.1	-0.3	12.2	13.2		May
	Jun	119.9	0.97	10.2	12.3	119.8	0.7	11.5	12.1	120.1	115.9	1.3	9.2	12.7		Jun
	Jul	120.3	0.32	9.4	12.0	120.1	0.2	11.5	12.1	120.4	116.6	0.2	7.9	12.1		Jul
	Aug	122.3	1.67	9.3	11.6	121.2	0.9	10.9	12.0	123.7	117.5	2.7	8.7	11.6		Aug
	Sep	124.0	1.41	10.3	11.4	123.5	1.9	11.6	11.9	124.8	118.4	0.9	9.5	11.2		Sep
	Oct	124.6	0.49	10.5	11.1	124.8	1.1	11.5	11.7	125.0	119.3	0.2	9.7	10.8		Oct
	Nov	124.7	0.04	10.5	11.0	124.6	-0.2	11.5	11.7	125.4	120.2	0.3	9.6	10.4		Nov
	Dec	126.0	1.06	10.3	10.8	124.8	0.2	10.8	11.7	128.1	121.3	2.2	11.0	10.3		Dec
2012	Jan	130.2	3.35	12.6	10.9	129.1	3.5	12.7	11.8	129.3	122.5	0.9	13.1	10.5		12-Jan
	Feb	130.5	0.28	11.9	11.0	129.3	0.1	11.9	11.9	129.1	123.5	-0.1	9.7	10.3		12-Feb
	Mar	132.6	1.59	12.1	10.9	135.1	4.5	15.0	12.1	132.1	124.6	2.3	11.8	10.3		12-Mar
	Apr	132.8	0.13	12.9	11.1	135.2	0.1	14.7	12.2	132.3	125.7	0.2	11.2	10.3		Apr
	May	133.8	0.75	12.7	11.1	136.7	1.1	14.9	12.4	133.9	127.0	1.2	12.9	10.4		May
	Jun	135.3	1.15	12.9	11.3	138.0	1.0	15.2	12.7	134.5	128.2	0.5	12.0	10.6		Jun
	Jul	135.7	0.24	12.8	11.6	138.1	0.1	15.0	13.0	135.0	129.4	0.3	12.1	11.0		Jul
	Aug	136.6	0.67	11.7	11.8	139.0	0.6	14.7	13.3	135.9	130.4	0.7	9.9	11.1		Aug
	Sep	138.0	1.01	11.3	11.9	139.7	0.5	13.1	13.5	137.5	131.5	1.1	10.2	11.1		Sep
	Oct	139.2	0.88	11.7	11.9	140.3	0.4	12.4	13.5	138.8	132.7	1.0	11.1	11.2		Oct
	Nov	140.0	0.60	12.3	12.1	140.9	0.4	13.1	13.6	139.8	133.9	0.7	11.6	11.4		Nov
	Dec	141.1	0.75	12.0	12.2	141.8	0.7	13.7	13.9	141.2	135.0	1.0	10.2	11.3		Dec
2013	Jan	141.9	0.62	9.0	11.9	143.8	1.4	11.3	13.7	142.3	136.0	0.8	10.1	11.1		13-Jan
	Feb	143.0	0.75	9.5	11.7	143.8	0.0	11.2	13.7	143.3	137.2	0.7	11.0	11.2		Feb
	Mar	144.0	0.71	8.6	11.4	144.8	0.7	7.2	13.0	144.6	138.3	1.0	9.5	11.0		Mar
	Apr	144.8	0.55	9.1	11.1	144.5	-0.2	6.9	12.3	145.6	139.4	0.6	10.0	10.8		Apr
	May	145.8	0.67	9.0	10.8	145.2	0.5	6.2	11.5	146.4	140.4	0.5	9.3	10.5		May
	Jun	146.6	0.59	8.4	10.4	145.5	0.3	5.5	10.7	147.5	141.5	0.7	9.6	10.4		Jun
	Jul	147.4	0.54	8.7	10.0	147.2	1.2	6.6	10.0	148.4	142.6	0.7	10.0	10.2		Jul
	Aug	147.8	0.25	8.2	9.8	149.1	1.3	7.2	9.4	149.2	143.7	0.5	9.7	10.2		Aug
	Sep	148.9	0.75	8.0	9.5	150.0	0.6	7.4	8.9	150.4	144.8	0.9	9.4	10.1		Sep
	Oct	150.0	0.75	7.8	9.2	150.9	0.6	7.6	8.6	151.6	145.9	0.8	9.2	10.0		Oct
	Nov	151.1	0.72	7.9	8.8	151.8	0.6	7.8	8.1	152.9	146.9	0.8	9.31	9.8		Nov
	Dec	152.3	0.78	8.0	8.5	153.0	0.8	7.9	7.7	154.3	148.0	0.9	9.25	9.7		Dec
2014	Jan	153.3	0.64	8.0	8.4	153.3	0.2	6.6	7.3	155.5	149.1	0.8	9.27	9.6		14-Jan
	Feb	154.0	0.50	7.7	8.3	154.1	0.5	7.2	7.0	156.5	150.2	0.6	9.2	9.5		Feb
	Mar	155.2	0.78	7.8	8.2	154.7	0.4	6.8	7.0	158.0	151.3	1.0	9.3	9.5		Mar
	Apr	156.2	0.62	7.9	8.1	155.3	0.4	7.5	7.0	159.3	152.5	0.8	9.4	9.4		Apr
	May	157.4	0.78	8.0	8.0	156.3	0.6	7.7	7.2	160.6	153.7	0.8	9.7	9.4		May
	Jun	158.6	0.77	8.2	8.0	157.4	0.7	8.1	7.4	161.9	154.9	0.8	9.8	9.5		Jun
	Jul	159.7	0.65	8.3	8.0	157.7	0.2	7.1	7.4	163.1	156.1	0.8	9.9	9.5		Jul
	Aug	160.4	0.5	8.5	8.0	158.4	0.4	6.3	7.33	164.0	157.3	0.6	9.96	9.48		Aug
	Sep	161.3	0.6	8.3	8.0	159.4	0.6	6.3	7.23	165.0	158.5	0.6	9.68	9.50		Sep
	Oct	162.1	0.5	8.1	8.0	160.3	0.6	6.3	7.12	165.8	159.7	0.5	9.34	9.51		Oct
	Nov	163.1	0.6	7.9	8.0	161.3	0.6	6.3	6.99	166.8	160.9	0.6	9.14	9.49		Nov
	Dec	164.4	0.8	8.0	8.0	162.5	0.8	6.2	6.85	168.4	162.1	0.9	9.15	9.48		Dec

2015	Jan	165.8	0.8	8.2	8.1	163.7	0.7	6.8	6.86	169.8	163.3	0.9	9.21	9.47		15-Jan
	Feb	166.9	0.7	8.4	8.1	164.8	0.7	7.0	6.85	171.1	164.5	0.7	9.36	9.49		Feb
	Mar	168.4	0.9	8.5	8.2	166.2	0.8	7.5	6.91	172.8	165.7	1.0	9.38	9.49		Mar
	Apr	169.7	0.8	8.7	8.2	167.2	0.6	7.7	6.92	174.4	167.0	0.9	9.49	9.50		Apr
	May	171.6	1.1	9.0	8.3	169.2	1.2	8.3	6.97	176.3	168.3	1.1	9.78	9.51		May
	Jun	173.2	0.9	9.2	8.4	170.6	0.8	8.4	7.01	178.1	169.6	1.1	10.04	9.53		Jun
	Jul	174.4	0.7	9.2	8.5	171.6	0.6	8.8	7.15	179.5	171.0	0.8	10.05	9.55		Jul
	Aug	175.4	0.6	9.3	8.6	172.7	0.6	9.0	7.38	180.6	172.4	0.6	10.13	9.57		Aug
	Sep	176.5	0.6	9.4	8.7	173.7	0.6	8.9	7.61	181.8	173.8	0.6	10.17	9.61		Sep
	Oct	177.2	0.4	9.3	8.8	174.4	0.4	8.7	7.81	182.6	175.2	0.5	10.13	9.68		Oct
	Nov	178.4	0.7	9.37	8.9	175.3	0.6	8.7	8.02	184.1	176.6	0.8	10.32	9.78		Nov
	Dec	180.1	1.0	9.55	9.0	176.7	0.8	8.7	8.22	186.2	178.1	1.2	10.59	9.90		Dec
2016	Jan	181.7	0.9	9.62	9.1	178.2	0.8	8.8	8.39	187.9	179.6	0.9	10.64	10.02		16-Jan
	Feb	185.9	2.3	11.38	9.4	183.0	2.7	11.0	8.73	190.5	181.2	1.4	11.35	10.18		Feb
	Mar	189.9	2.2	12.77	9.8	186.4	1.9	12.2	9.13	194.9	183.1	2.3	12.74	10.47		Mar
	Apr	193.0	1.6	13.72	10.2	189.5	1.7	13.4	9.61	197.4	185.0	1.3	13.19	10.79		Apr
	May	198.3	2.8	15.58	10.7	194.7	2.7	15.1	10.20	202.5	187.2	2.6	14.86	11.22		May
	Jun	201.7	1.71	16.48	11.4	198.3	1.83	16.2	10.86	205.4	189.4	1.44	15.30	11.67		Jun
	Jul	204.2	1.25	17.13	12.0	200.7	1.22	16.9	11.55	207.9	191.8	1.21	15.80	12.16		Jul
	Aug	206.3	1.01	17.61	12.7	202.4	0.85	17.2	12.25	210.3	194.3	1.17	16.43	12.70		Aug
	Sep	208.0	0.81	17.85	13.5	204.3	0.96	17.7	12.98	212.0	196.8	0.81	16.62	13.24		Sep
	Oct	209.7	0.83	18.33	14.2	205.9	0.75	18.1	13.76	213.8	199.4	0.86	17.09	13.82		Oct
	Nov	211.3	0.78	18.48	15.0	207.3	0.71	18.2	14.54	215.7	202.0	0.88	17.19	14.39		Nov
	Dec	213.6	1.06	18.55	15.7	208.6	0.62	18.1	15.31	218.6	204.7	1.33	17.39	14.95		Dec
2017	Jan	215.7	1.01	18.72	16.4	210.0	0.68	17.9	16.04	221.4	207.5	1.29	17.82	15.54		17-Jan
	Feb	218.9	1.49	17.78	17.0	212.3	1.10	16.0	16.44	225.8	210.5	1.99	18.53	16.13		Feb
	Mar	222.7	1.72	17.26	17.3	215.1	1.32	15.4	16.68	230.8	213.5	2.21	18.44	16.60		Mar
	Apr	226.3	1.60	17.24	17.6	217.5	1.10	14.8	16.77	235.5	216.6	2.04	19.30	17.11		Apr
	May	230.5	1.88	16.25	17.63	220.0	1.17	13.0	16.57	241.5	219.9	2.54	19.27	17.48		May
	Jun	234.2	1.58	16.10	17.58	223.0	1.32	12.5	16.22	246.3	223.3	1.99	19.91	17.87		Jun
	Jul	237.0	1.21	16.05	17.47	225.2	1.00	12.2	15.80	250.0	226.8	1.52	20.28	18.25		Jul
	Aug	239.3	0.97	16.01	17.33	227.3	0.93	12.3	15.37	252.9	230.4	1.14	20.25	18.57		Aug
	Sep	241.2	0.78	15.98	17.17	229.1	0.80	12.1	14.90	255.1	233.9	0.87	20.32	18.88		Sep
	Oct	243.0	0.76	15.91	16.97	230.9	0.76	12.1	14.41	257.2	237.6	0.85	20.31	19.14		Oct
	Nov	244.9	0.78	15.90	16.76	232.6	0.77	12.2	13.93	259.5	241.2	0.88	20.31	19.39		Nov
	Dec	246.4	0.59	15.37	16.50	233.8	0.51	12.1	13.46	261.0	244.8	0.58	19.42	19.55		Dec
2018	Jan	248.4	0.80	15.13	16.22	235.4	0.68	12.1	13.01	263.3	248.2	0.87	18.92	19.62		18-Jan
	Feb	250.3	0.79	14.33	15.93	237.2	0.75	11.7	12.67	265.5	251.6	0.85	17.59	19.52		Feb
	Mar	252.4	0.84	13.34	15.60	239.2	0.84	11.2	12.33	267.9	254.6	0.90	16.08	19.29		Mar
	Apr	254.5	0.83	12.48	15.20	241.3	0.87	10.9	12.02	270.4	257.5	0.91	14.80	18.89		Apr
	May	257.3	1.09	11.61	14.79	243.6	0.98	10.7	11.83	273.9	260.3	1.33	13.45	18.36		May
	June	260.5	1.24	11.23	14.37	246.1	1.03	10.4	11.65	278.2	262.9	1.57	12.98	17.75		June
	July	263.4	1.13	11.14	13.95	248.1	0.81	10.2	11.48	282.2	265.6	1.40	12.85	17.10		July
	August	266.2	1.05	11.23	13.55	250.1	0.78	10.0	11.28	286.2	268.4	1.42	13.16	16.50		August
	September	268.4	0.84	11.28	13.16	251.7	0.64	9.8	11.09	289.0	271.2	1.00	13.31	15.92		September
	October	270.4	0.74	11.26	12.78	253.7	0.80	9.9	10.90	291.4	274.0	0.82	13.28	15.36		October
	November	272.6	0.80	11.28	12.41	255.4	0.68	9.8	10.70	294.0	276.9	0.90	13.30	14.80		November
	December	274.6	0.74	11.44	12.10	256.7	0.50	9.8	10.51	296.4	279.9	0.81	13.56	14.35		December
2019	January	276.6	0.74	11.37	11.80	258.8	0.81	9.9	10.34	298.9	282.8	0.83	13.51	13.93		January
	February	278.6	0.73	11.31	11.56	260.4	0.65	9.8	10.19	301.3	285.8	0.82	13.47	13.62		February
	March	280.8	0.79	11.25	11.40	261.8	0.53	9.5	10.04	303.9	288.8	0.88	13.45	13.42		March
	April	283.5	0.94	11.37	11.31	263.7	0.70	9.3	9.91	307.4	291.9	1.14	13.70	13.34		April
	May	286.6	1.11	11.40	11.299	265.6	0.75	9.0	9.77	311.7	295.1	1.41	13.79	13.37		May
	June	289.7	1.07	11.22	11.297	267.9	0.85	8.8	9.64	316.0	298.2	1.36	13.56	13.42		June



2014	Jan	153.3	153.3	150.7	148.4	155.5	155.2	135.5	150.7	162.7	145.0	144.3	150.4	121.3	131.0	138.3	134.9	146.5	0.6	8.0	8.4	Jan-14
	Feb	154.0	154.1	151.8	149.1	156.5	156.1	136.0	151.4	163.3	145.5	145.0	151.0	121.6	132.0	138.7	135.3	146.9	0.5	7.7	8.3	Feb
	Mar	155.2	154.7	152.5	150.3	158.0	157.6	136.7	151.9	164.2	146.5	145.9	152.0	122.1	132.8	139.4	136.1	147.7	0.8	7.8	8.2	Mar
	Apr	156.2	155.3	153.1	151.1	159.3	158.9	137.5	152.7	164.9	147.0	146.3	152.6	122.6	133.5	139.9	136.9	148.4	0.6	7.9	8.1	Apr
	May	157.4	156.3	154.0	152.4	160.6	160.2	138.3	154.1	166.0	148.2	147.4	153.8	123.1	134.5	140.9	138.1	149.6	0.8	8.0	8.0	May
	Jun	158.6	157.4	155.0	153.4	161.9	161.5	139.3	155.3	167.3	149.3	148.4	154.8	123.7	135.3	141.3	139.2	150.7	0.8	8.2	8.0	Jun
	Jul	159.7	157.7	155.4	154.0	163.1	162.7	140.2	156.2	168.3	150.3	149.1	155.4	124.1	136.5	141.8	139.9	151.3	0.6	8.3	8.0	Jul
	Aug	160.4	158.4	156.0	154.9	164.0	163.6	141.0	156.8	168.7	151.1	149.9	156.3	124.2	137.4	142.6	140.5	152.0	0.5	8.5	8.0	Aug
	Sep	161.3	159.4	157.1	156.0	165.0	164.6	141.8	157.6	169.4	152.2	150.6	156.9	124.6	137.9	143.9	141.3	152.9	0.6	8.3	8.0	Sep
	Oct	162.1	160.3	158.0	157.0	165.8	165.4	142.6	158.6	170.1	153.1	151.4	157.7	124.9	138.4	145.0	142.4	153.9	0.5	8.1	8.0	Oct
	Nov	163.1	161.3	158.9	158.0	166.8	166.4	143.4	159.8	170.8	154.2	152.4	158.4	125.3	138.9	146.0	143.3	154.9	0.6	7.9	8.0	Nov
	Dec	164.4	162.5	160.2	159.5	168.4	167.9	144.7	161.3	171.8	155.5	153.5	159.7	125.5	139.6	147.0	144.6	156.2	0.8	8.0	8.0	Dec
2015	Jan	165.8	163.7	161.4	160.8	169.8	169.4	145.7	162.7	172.9	156.9	154.7	160.8	125.6	140.6	148.1	145.8	157.4	0.8	8.2	8.1	Jan-15
	Feb	166.9	164.8	162.5	162.3	171.1	170.6	146.7	163.8	173.9	158.0	155.9	161.7	126.1	141.3	149.0	146.9	158.4	0.7	8.4	8.1	Feb
	Mar	168.4	166.2	163.9	163.6	172.8	172.4	147.9	165.2	175.1	159.5	157.4	163.1	126.3	142.0	150.3	148.0	159.9	0.9	8.5	8.2	Mar
	Apr	169.7	167.2	164.9	165.0	174.4	173.9	148.9	166.1	176.2	160.3	158.3	164.5	126.5	142.6	151.0	148.9	160.8	0.8	8.7	8.2	Apr
	May	171.6	169.2	166.7	166.9	176.3	175.8	150.5	168.1	178.2	161.9	160.2	166.5	126.9	143.7	152.7	150.4	162.6	1.1	9.0	8.3	May
	Jun	173.2	170.6	167.9	168.5	178.1	177.6	151.7	169.5	179.5	162.9	161.0	168.3	127.3	145.0	154.0	151.8	164.3	0.9	9.2	8.4	Jun
	Jul	174.4	171.6	168.9	170.0	179.5	179.0	152.8	170.7	180.6	163.6	162.0	169.6	127.6	146.0	154.9	152.6	165.3	0.7	9.2	8.5	Jul
	Aug	175.4	172.7	169.8	171.4	180.6	180.1	153.5	171.6	181.6	164.4	162.8	170.2	127.9	146.3	156.4	153.4	166.3	0.6	9.3	8.6	Aug
	Sep	176.5	173.7	170.8	172.8	181.8	181.3	154.6	172.6	182.6	165.4	163.7	171.2	128.1	146.9	157.8	154.3	166.9	0.6	9.4	8.7	Sep
	Oct	177.2	174.4	171.5	173.7	182.6	182.1	155.3	173.5	183.0	165.7	164.1	172.1	128.4	147.5	159.0	154.8	167.5	0.4	9.3	8.8	Oct
	Nov	178.4	175.3	172.4	175.1	184.1	183.5	156.2	174.7	183.7	166.2	164.6	174.0	128.7	148.2	159.9	155.4	168.4	0.7	9.4	8.9	Nov
	Dec	180.1	176.7	173.8	177.1	186.2	185.6	157.8	177.1	184.6	167.2	165.8	176.1	129.3	149.4	160.8	157.2	170.3	1.0	9.55	9.0	Dec
2016	Jan	181.7	178.2	175.2	178.9	187.9	187.3	159.3	178.6	185.7	168.1	167.2	177.9	129.8	150.4	162.9	158.9	171.9	0.9	9.62	9.1	Jan-16
	Feb	185.9	183.0	177.9	183.7	190.5	189.9	161.4	181.1	198.1	170.6	169.3	180.4	130.7	151.7	167.1	160.0	173.5	2.3	11.38	9.4	Feb
	Mar	189.9	186.4	180.8	188.4	194.9	194.2	164.1	185.1	203.0	174.0	171.4	184.5	131.6	153.4	169.7	160.9	176.3	2.2	12.77	9.8	Mar
	Apr	193.0	189.5	182.7	192.0	197.4	196.7	165.5	187.3	209.7	175.7	172.6	187.5	132.3	155.0	172.0	161.6	177.8	1.6	13.72	10.2	Apr
	May	198.3	194.7	187.3	197.9	202.5	201.7	169.7	191.7	217.4	180.3	176.4	192.5	133.2	158.4	176.8	165.3	183.3	2.8	15.58	10.7	May
	Jun	201.7	198.3	190.3	202.3	205.4	204.6	172.8	195.8	223.0	183.1	178.7	196.7	134.0	159.2	179.2	166.9	185.0	1.7	16.48	11.4	Jun
	Jul	204.2	200.7	192.0	204.7	207.9	207.1	174.7	198.1	226.9	183.8	179.8	199.3	134.5	160.1	182.3	168.0	186.4	1.3	17.13	12.0	Jul
	Aug	206.3	202.4	193.4	206.8	210.3	209.5	176.2	200.2	228.8	184.9	180.6	200.8	134.9	160.9	185.3	168.3	187.2	1.0	17.61	12.7	Aug
	Sep	208.0	204.3	195.0	208.7	212.0	211.1	177.6	202.3	230.6	186.0	181.5	202.1	135.3	161.8	188.4	168.8	188.1	0.8	17.85	13.5	Sep
	Oct	209.7	205.9	196.5	210.5	213.8	212.9	178.9	204.4	232.3	187.3	182.5	203.4	135.7	162.6	191.3	169.3	189.1	0.8	18.33	14.2	Oct
	Nov	211.3	207.3	198.1	212.3	215.7	214.8	180.0	206.5	233.7	188.6	183.4	204.7	136.0	163.5	193.4	169.8	190.1	0.8	18.48	15.0	Nov
	Dec	213.6	208.6	199.3	214.4	218.6	217.6	181.2	208.6	234.9	190.0	184.5	206.5	136.2	164.5	195.5	171.2	191.9	1.1	18.55	15.7	Dec
2017	Jan	215.7	210.0	200.6	216.4	221.4	220.4	182.2	210.5	236.2	191.5	185.6	208.5	136.4	165.4	197.2	172.2	192.2	1.0	18.72	16.4	Jan-17
	Feb	218.9	212.3	202.8	219.4	225.8	224.8	183.4	212.7	238.6	193.3	187.1	210.6	136.8	166.8	199.1	173.1	194.1	1.5	17.78	17.0	Feb
	Mar	222.7	215.1	205.4	222.6	230.8	229.7	185.0	215.9	241.2	195.8	189.0	213.0	137.2	169.2	201.2	174.7	196.6	1.7	17.26	17.3	Mar
	Apr	226.3	217.5	207.8	224.5	235.5	234.4	186.7	219.3	243.3	198.3	191.0	215.4	137.5	171.6	203.3	176.9	199.4	1.6	17.24	17.6	Apr
	May	230.5	220.0	210.1	227.5	241.5	240.3	188.4	223.0	245.5	200.7	193.1	218.1	138.0	173.9	205.5	178.2	201.8	1.9	16.25	17.6	May
	Jun	234.2	223.0	213.2	231.0	246.3	245.1	189.9	226.6	247.3	203.7	195.6	220.8	138.4	175.1	208.0	180.3	204.1	1.6	16.10	17.6	Jun
	Jul	237.0	225.2	215.7	233.6	250.0	248.9	191.3	229.3	248.5	206.4	198.3	222.7	138.6	176.1	209.6	182.7	205.9	1.2	16.05	17.5	Jul
	Aug	239.3	227.3	218.0	236.6	252.9	251.7	192.5	232.0	249.7	208.9	200.2	224.6	138.9	177.1	211.0	184.3	207.6	1.0	16.01	17.3	Aug
	Sep	241.2	229.1	219.8	239.7	255.1	253.9	193.5	234.3	250.9	211.0	201.6	226.4	139.1	178.1	212.3	185.4	209.2	0.8	15.98	17.2	Sep
	Oct	243.0	230.9	221.5	242.8	257.2	256.0	194.6	236.3	252.1	212.8	202.9	228.2	139.4	179.1	213.9	186.6	210.7	0.8	15.91	17.0	Oct
	Nov	244.9	232.6	223.3	245.8	259.5	258.3	195.7	238.3	253.3	214.6	204.3	230.0	140.1	179.9	215.5	187.8	212.3	0.8	15.90	16.8	Nov
	Dec	246.4	233.8	224.4	248.5	261.0	259.8	196.8	239.8	254.4	216.0	205.6	232.0	140.9	180.9	216.9	189.1	213.9	0.6	15.37	16.5	Dec
2018	Jan	248.4	235.4	226.1	251.5	263.3	262.1	198.1	241.5	255.9	217.7	207.0	234.3	141.7	182.1	218.7	190.8	215.7	0.8	15.13	16.2	Jan-18
	Feb	250.3	237.2	227.8	254.7	265.5	264.3	199.7	243.4	257.5	219.4	208.6	236.4	142.6	183.3	220.3	192.3	217.5	0.8	14.33	15.9	Feb
	Mar	252.4	239.2	229.7	257.9	267.9	266.6	201.3	245.3	259.2	221.1	210.3	238.4	143.4	184.6	222.1	193.9	219.2	0.8	13.34	15.6	Mar
	Apr	254.5	241.3	231.9	260.9	270.4	269.1	202.8	247.3	260.9	222.8	212.1	240.4	144.2	186.0	223.9	195.3	221.1	0.8	12.48	15.2	Apr
	May	257.3	243.6	234.5	264.0	273.9	272.6	204.4	249.3	262.8	224.6	214.0	242.6	145.0	187.6	226.0	196.9	223.1	1.1	11.61	14.8	May
	June	260.5	246.1	237.1	267.3	278.2	276.9	206.3	251.5	264.7	226.5	216.0	244.8	145.9	189.1	228.2	198.6	225.1	1.2	11.23	14.4	June
	July	263.4	248.1	239.0	269.1	282.2	280.8	208.1	253.6	266.6	228.4	218.1	247.0	146.8	190.7	230.3	200.3	227.1	1.1	11.14	13.9	July
	August	266.2	250.1	241.1	273.8	286.2	284.7	209.8	255.7	267.8	229.9	219.5	248.5	147.6	191.8	231.7	201.6	228.4	1.0	11.23	13.5	August
	September	268.4	251.7	242.8	277.2	289.0	287.6	211.5	257.8	269.2	231.7	221.0	250.1	148.6	192.9	233.3	202.8					

Table 4 Rural Consumer Price Index (Base November 2009 = 100)

		All items	All items less Farm Produce	All items less Farm Produce and Energy	Food	Food & Non Alcoholic B v.	Tobacco and Kola	Alcoholic Beverage	Clothing and Footwear	Housing Water, Electricity, Gas and Other Fuel	Maintenance	Furnishings & Household Equipment	Health	Transport	Communication	Recreation & Culture	Education	Restaurant & Hotels	Miscellaneous Goods & Services	Month-on (%)	Year-on (%)	12-month average (%)	
Weights		1000.00	552.64	418.67	155.45	476.88	490.59	11.19	65.50	191.51	49.81	27.40	74.54	10.14	7.14	40.05	14.49	17.65					
2009	Jan	92.8	96.6	97.8		90.5	90.5	97.6	97.8	96.4	96.3	96.3	94.0	99.3	97.8	92.3	102.0	96.0	0.0	10.4	11.8	09-Jan	
	Feb	93.6	96.3	97.6		92.0	92.0	98.6	98.2	95.5	96.2	98.1	93.0	99.3	97.8	90.9	103.2	95.2	0.8	9.8	11.6	Feb	
	Mar	93.9	96.5	98.0		92.4	92.4	98.8	97.9	95.5	96.5	98.3	94.1	99.3	96.7	93.0	104.1	95.1	0.4	9.9	11.5	Mar	
	Apr	94.3	97.4	98.8		92.5	92.6	99.9	98.6	96.4	98.0	99.6	95.7	99.3	97.8	89.7	104.4	95.6	0.5	8.6	11.3	Apr	
	May	95.7	98.2	98.7		94.1	94.1	100.1	96.9	98.1	96.2	97.9	97.1	99.3	98.9	96.3	104.2	98.2	1.4	9.5	11.2	May	
	June	97.2	98.8	99.7		96.3	96.3	100.6	97.0	98.5	97.4	99.3	96.7	99.3	99.9	96.7	106.2	98.1	1.6	9.2	11.0	June	
	July	98.9	99.5	100.3		98.4	98.4	102.1	99.9	100.2	98.8	100.9	95.7	100.8	100.1	97.6	100.1	98.5	1.7	9.3	10.7	July	
	Aug	99.6	99.7	99.4		99.3	99.3	100.7	99.9	100.6	99.7	100.3	95.1	102.1	101.2	97.4	105.2	99.9	0.7	8.4	10.4	Aug	
	Sep	99.8	99.5	99.2		99.8	99.8	99.8	99.7	100.3	101.1	98.8	96.0	101.5	100.5	99.5	99.7	100.8	0.2	8.1	10.0	Sept	
	Oct	99.8	99.9	99.3		99.6	99.6	99.8	100.3	100.8	100.9	99.9	96.8	100.9	100.1	98.9	98.0	100.7	0.0	8.3	9.5	Oct	
	Nov	100.0	100.0	100.0	100.0	100.0	100.0	100.0	100.0	100.0	100.0	100.0	100.0	100.0	100.0	100.0	100.0	100.0	0.2	8.8	9.3	Nov	
	Dec	101.4	101.3	101.8	100.5	101.6	101.7	99.9	100.9	101.4	100.8	101.6	102.0	99.2	104.2	100.7	103.2	101.6	1.4	9.3	9.1	Dec	
2010	Jan	102.6	102.5	102.7	101.1	102.8	102.8	100.7	103.1	102.6	101.9	102.4	103.5	99.7	105.8	102.5	108.3	102.8	1.2	10.5	9.1	10-Jan	
	Feb	104.4	105.4	105.4	103.1	102.9	103.6	101.6	103.6	104.4	103.6	105.4	103.9	100.1	99.4	108.0	106.7	106.3	1.8	11.6	9.3	Feb	
	Mar	106.0	105.7	105.9	103.5	106.1	105.9	103.8	105.9	104.8	106.1	106.8	108.1	100.9	107.1	106.8	107.5	106.1	1.5	12.9	9.6	Mar	
	Apr	105.9	105.4	105.6	103.4	106.3	106.1	103.9	106.0	103.9	105.5	106.9	106.7	100.8	108.3	106.6	111.5	107.0	-0.1	12.2	9.9	Apr	
	May	103.8	103.7	104.9	104.5	103.8	104.7	102.0	104.7	99.2	103.0	104.1	105.9	101.2	105.0	105.7	109.3	104.8	-1.9	8.5	9.8	May	
	Jun	107.7	107.0	108.0	110.0	108.5	108.6	106.8	108.7	105.2	108.7	107.9	106.2	103.4	104.0	106.8	108.6	109.3	3.7	10.8	9.9	June	
	Jul	109.1	107.9	108.4	109.1	110.4	110.6	109.2	110.4	103.9	108.4	111.6	109.3	104.0	102.8	106.7	106.4	110.6	1.3	10.3	10.0	July	
	Aug	110.5	109.0	109.9	111.0	112.8	112.9	110.0	112.1	103.0	110.7	113.0	110.0	100.9	106.4	108.1	111.6	111.7	1.3	10.9	10.2	Aug	
	Sep	110.6	109.4	110.5	113.0	112.6	112.4	106.6	112.4	106.0	110.5	110.0	112.2	101.4	110.1	107.6	107.3	109.2	0.1	10.9	10.4	Sept	
	Oct	111.2	110.0	110.1	114.3	113.5	113.5	109.6	111.6	110.7	109.4	110.8	105.8	101.4	109.0	108.4	106.0	110.8	0.5	11.5	10.7	Oct	
	Nov	111.7	111.3	111.1	113.4	112.8	112.8	110.0	112.2	111.0	111.1	111.8	110.4	101.1	109.7	107.9	107.8	113.1	0.5	11.7	10.9	Nov	
	Dec	112.2	111.2	111.0	113.5	113.4	113.4	109.7	113.8	111.8	111.5	112.9	111.7	100.8	109.2	109.3	111.3	112.7	0.4	10.7	11.0	Dec	
2011	Jan	110.7	108.5	106.0	67.2	111.7	116.5	107.8	114.9	110.8	112.4	111.6	108.3	105.8	108.1	111.2	113.2	111.6	-1.4	7.9	10.8	11-Jan	
	Feb	114.2	114.1	114.4	117.6	115.5	115.2	110.2	115.1	115.5	114.4	118.6	111.6	101.9	103.7	111.7	114.9	114.6	3.2	9.4	10.6	Feb	
	Mar	115.0	114.9	114.2	118.0	116.0	116.3	109.8	115.7	118.2	115.1	120.5	111.9	101.8	105.1	111.6	115.9	113.8	0.7	8.5	10.3	Mar	
	Apr	115.5	116.3	116.1	114.9	116.4	115.5	112.3	116.3	116.1	114.8	117.8	112.2	102.5	106.1	111.6	115.1	115.5	0.5	9.1	10.0	Apr	
	May	115.8	116.8	116.7	116.0	116.7	116.2	112.9	117.2	116.0	116.4	120.1	116.2	102.8	105.6	111.7	115.9	114.7	0.2	11.5	10.2	May	
	Jun	116.6	116.6	116.3	112.4	118.0	117.2	112.1	117.2	116.3	115.4	121.1	116.5	102.0	106.5	111.7	116.8	114.7	0.7	8.3	10.0	Jun	
	Jul	116.3	116.8	115.6	111.8	118.0	117.6	112.2	117.4	118.3	116.7	118.8	119.0	103.4	104.9	112.5	117.3	115.8	-0.3	6.6	9.7	Jul	
	Aug	118.3	118.7	117.8	113.4	119.9	119.1	113.8	117.9	119.9	119.7	121.1	122.1	103.4	107.9	112.6	116.1	116.9	1.7	7.1	9.4	Aug	
	Sep	120.0	121.3	119.6	115.5	120.7	119.8	114.1	118.4	124.8	120.2	123.6	121.3	103.7	108.2	113.2	117.7	117.2	1.4	8.4	9.2	Sept	
	Oct	119.9	121.2	119.1	115.5	120.9	120.0	114.6	119.1	125.6	120.3	121.7	121.3	104.3	111.1	113.2	118.8	116.7	-0.1	7.8	8.9	Oct	
	Nov	120.0	121.1	118.9	119.0	120.8	119.7	115.5	120.8	125.1	119.7	123.3	122.8	105.0	108.6	113.7	119.0	120.5	0.1	7.4	8.5	Nov	
	Dec	122.3	122.0	119.6	121.1	124.5	123.8	115.2	120.2	128.0	119.2	122.1	128.2	104.6	107.9	114.6	121.1	117.4	2.0	9.0	8.4	Dec	
2012	Jan	128.9	128.2	127.4	113.4	125.5	127.1	119.3	119.7	135.4	120.6	123.3	127.4	105.9	108.9	114.9	123.4	119.9	5.3	16.4	9.1	12-Jan	
	Feb	129.2	128.4	127.5	113.5	126.3	126.2	119.3	119.7	135.5	120.6	123.3	127.5	105.9	108.9	114.9	123.4	119.9	0.3	13.1	9.4	Feb	
	Mar	130.7	132.6	132.1	129.5	129.1	128.9	113.2	135.2	136.9	127.4	129.0	137.6	110.6	115.1	124.2	122.9	131.4	1.2	13.7	9.9	Mar	
	Apr	131.1	133.0	132.6	130.7	129.4	129.2	114.6	136.3	136.9	128.1	129.4	137.6	111.1	116.4	124.4	123.1	132.3	0.3	13.4	10.3	Apr	
	May	132.1	134.0	133.6	132.1	131.1	130.9	115.5	136.8	137.2	128.4	130.1	138.2	111.7	117.8	125.3	123.5	133.0	0.8	14.1	10.5	May	
	Jun	134.1	135.8	134.0	132.1	131.4	131.3	116.1	146.5	128.3	130.4	138.3	112.1	117.6	125.5	123.7	133.4	1.5	15.0	11.1	Jun		
	Jul	134.5	135.5	133.6	132.4	131.7	131.6	116.4	137.0	146.9	128.5	130.8	138.7	112.2	118.4	125.9	124.2	133.6	0.2	15.6	11.8	Jul	
	Aug	135.4	136.7	134.3	133.8	132.5	132.4	117.0	137.9	148.3	129.5	131.5	139.6	112.6	119.3	126.1	126.0	134.8	0.7	14.5	12.4	Aug	
	Sep	137.0	137.7	135.4	133.9	134.2	134.0	117.3	138.9	151.1	130.3	132.3	140.4	113.3	121.0	126.6	126.2	136.1	1.2	14.2	12.9	Sept	
	Oct	138.2	138.3	135.6	134.5	135.3	135.1	117.6	139.7	152.9	131.2	133.0	141.5	113.6	121.9	127.9	126.8	136.9	0.9	15.3	13.5	Oct	
	Nov	139.0	139.8	136.1	134.5	136.2	136.0	118.1	140.1	154.2	131.8	133.3	142.1	113.7	122.8	128.6	127.2	137.0	0.6	15.8	14.2	Nov	
	Dec	140.0	139.8	136.9	136.7	137.6	137.3	118.8	141.2	155.1	132.1	133.6	143.1	113.8	122.8	129.0	127.3	137.2	0.8	14.5	14.6	Dec	
2013	Jan	140.8	142.3	137.9	137.8	138.6	138.4	120.0	141.8	155.4	132.4	134.0	143.6	113.9	122.9	129.4	127.5	137.6	0.5	9.2	14.0	13-Jan	
	Feb	142.0	142.3	137.9	137.9	139.9	139.6	121.0	143.0	156.7	133.3	135.3	144.9	114.3	124.1	130.5	128.6	138.9	0.9	9.8	13.7	Feb	
	Mar	142.8	142.0	139.3	138.5	140.7	140.5	121.7	144.0	157.5	134.2	136.3	145.9	114.9	124.8	131.5	129.1	140.0	0.6	9.3	13.3	Mar	
	Apr	143.7	142.6	140.1	138.6	142.0	141.7	122.5	144.7	158.3	134.6	136.7	146.3	115.0	125.4	131.6	129.3	140.3	0.6	9.7	13.0	Apr	
	May	144.5	142.7	138.7	139.0	142.7	142.5	122.9	145.8	158.8	135.6	137.8	147.3	115.5	126.3	132.8	130.4	141.6	0.6	9.4	12.6	May	
	Jun	145.5	143.1	139.1	140.4	143.9	143.6	123.6	146.5	159.9	135.9	138.6	148.1	115.7	126.6	133.0	131.3	142.1	0.7	8.4	12.0	Jun	
	Jul	146.3	145.4	142.9	141.5	145.0	144.7	123.9	147.2	160.8	136.5	139.2	148.9	116.1	127.2	133.2	131.7	142.4	0.6	8.8	11.4	Jul	
	Aug	146.8	147.7	144.1	142.6	145.8	145.5	124.1	147.2														

2015	Jan	164.7	161.2	158.1	160.7	166.9	166.4	138.9	164.2	174.9	153.0	153.9	165.3	123.6	142.6	148.6	147.6	158.4	0.80	8.21	8.15	15-Jan	
	Feb	165.9	162.4	159.4	162.3	168.2	167.7	140.2	165.1	175.8	154.2	155.0	166.6	124.1	143.5	149.3	148.7	159.4	0.70	8.41	8.21	Feb	
	Mar	167.4	163.7	160.7	163.6	169.9	169.4	141.4	166.6	176.9	155.6	156.7	168.1	124.2	144.3	150.9	149.9	160.8	0.91	8.58	8.26	Mar	
	Apr	168.7	164.7	161.7	164.9	171.6	171.0	142.7	167.5	177.9	156.4	157.8	169.5	124.5	144.9	151.6	150.8	161.8	0.78	8.74	8.33	Apr	
	May	170.6	166.8	163.7	167.0	173.5	173.0	144.3	169.5	179.7	157.9	159.6	171.9	124.8	145.9	153.7	152.1	163.5	1.11	9.09	8.40	May	
	Jun	172.2	168.2	164.9	168.6	175.4	174.8	145.4	170.5	181.1	158.7	160.5	174.2	125.4	147.4	154.9	153.3	165.1	0.93	9.23	8.48	Jun	
	Jul	173.3	169.2	165.8	170.0	176.7	176.1	146.4	171.6	182.0	159.4	161.4	175.6	125.7	148.3	155.6	153.6	166.2	0.65	9.18	8.54	Jul	
	Aug	174.3	170.2	166.7	171.3	177.8	177.2	146.9	172.4	182.9	160.4	162.2	176.1	125.9	148.8	157.0	154.4	167.3	0.57	9.25	8.59	Aug	
	Sep	175.5	171.3	167.9	172.8	179.2	178.6	148.2	173.7	183.9	161.4	163.5	176.9	126.2	149.6	158.2	155.1	167.9	0.66	9.46	8.68	Sep	
	Oct	176.2	172.0	168.5	173.7	180.1	179.5	148.8	174.6	184.4	161.8	164.0	177.9	126.5	150.2	159.4	155.5	168.2	0.44	9.40	8.79	Oct	
	Nov	177.4	172.8	169.3	175.1	181.5	180.9	149.7	175.8	185.0	162.3	164.5	180.0	126.8	150.9	160.2	156.1	168.9	0.66	9.44	8.92	Nov	
	Dec	179.2	174.3	170.7	177.2	183.8	183.1	151.5	178.5	185.9	163.3	165.6	182.4	127.2	152.1	161.2	158.2	170.7	1.03	9.67	9.06	Dec	
2016	Jan	180.8	175.8	172.2	178.9	185.5	184.8	152.8	179.9	187.0	164.2	167.1	184.7	127.7	153.1	163.3	160.1	172.2	0.86	9.73	9.19	16-Jan	
	Feb	186.2	181.2	174.9	183.4	187.8	187.1	154.7	182.4	205.6	167.1	169.2	186.9	128.4	154.3	167.1	160.8	174.4	3.01	12.25	9.52	Feb	
	Mar	190.0	184.6	178.0	187.8	192.1	191.3	157.7	186.2	208.8	170.5	171.3	191.8	129.3	155.9	169.9	162.0	176.6	2.02	13.48	9.93	Mar	
	Apr	194.1	188.0	179.3	191.4	194.3	193.5	158.7	188.5	222.1	171.4	172.7	194.1	129.7	157.0	171.2	162.8	178.1	2.17	15.05	10.47	Apr	
	May	199.8	193.3	183.7	197.7	199.8	198.9	162.5	193.0	230.5	176.1	176.6	199.9	130.5	160.3	175.7	165.4	183.7	2.96	17.15	11.16	May	
	Jun	203.4	197.0	187.0	202.2	203.0	202.1	165.8	197.0	235.6	179.6	178.9	204.5	131.2	161.2	177.4	167.0	185.5	1.76	18.11	11.92	Jun	
	Jul	206.1	199.7	189.1	205.2	205.7	204.7	168.2	199.6	239.1	180.5	179.6	208.3	131.7	162.1	181.4	168.1	187.3	1.35	18.33	12.75	Jul	
	Aug	208.0	201.4	190.6	207.4	207.7	206.6	170.0	201.6	241.2	181.6	180.4	209.8	132.1	162.8	184.9	168.4	188.1	0.91	19.33	13.60	Aug	
	Sep	209.6	203.6	192.4	209.4	209.4	208.3	171.5	203.8	243.1	182.8	181.3	211.2	132.4	163.6	187.6	168.9	188.9	0.79	19.48	14.44	Sep	
	Oct	211.3	205.1	193.9	211.2	211.3	210.2	172.9	205.8	244.8	184.0	182.2	212.4	132.8	164.4	190.0	169.5	190.0	0.81	19.91	15.32	Oct	
	Nov	213.0	206.7	195.6	213.1	213.2	212.1	173.9	207.8	246.3	185.2	183.3	213.6	133.1	165.3	192.1	170.2	191.0	0.78	20.07	16.19	Nov	
	Dec	215.3	208.5	197.5	215.3	216.2	215.0	175.0	210.1	247.7	186.6	184.4	215.7	133.4	166.5	194.4	171.7	193.1	1.08	20.12	17.05	Dec	
2017	Jan	217.5	210.0	199.0	217.2	219.1	217.9	176.0	212.0	249.1	188.3	185.6	218.0	133.6	167.2	196.3	172.9	194.5	1.03	20.31	17.91	17-Jan	
	Feb	220.8	212.7	201.5	220.5	223.6	222.3	177.6	214.6	251.1	190.9	187.5	221.0	134.2	169.6	198.2	174.3	196.1	1.52	18.57	18.42	Feb	
	Mar	224.7	215.7	204.5	224.0	228.8	227.5	179.4	218.2	253.5	193.7	189.7	223.9	134.9	172.5	200.4	176.3	199.3	1.76	18.27	18.79	Mar	
	Apr	228.3	217.9	206.6	226.0	233.6	232.3	180.8	221.9	255.6	196.5	192.0	226.8	135.3	173.3	202.5	178.3	202.6	1.61	17.62	18.98	Apr	
	May	232.5	220.5	208.9	229.0	239.7	238.2	182.6	225.8	257.7	199.1	194.4	229.7	135.9	177.8	204.7	180.4	205.1	1.84	16.34	18.88	May	
	Jun	236.2	223.7	212.4	232.6	244.6	243.2	184.0	229.5	259.5	202.4	197.0	232.9	136.3	179.2	207.4	182.6	207.6	1.60	16.15	18.69	Jun	
	Jul	239.2	225.9	214.9	235.9	248.5	247.1	185.5	232.5	260.9	205.6	200.1	235.1	136.6	180.4	209.2	185.8	209.5	1.25	16.04	18.43	Jul	
	Aug	241.5	228.1	217.2	239.0	251.5	250.0	186.5	235.2	262.2	208.4	202.1	237.4	136.8	181.5	210.6	187.5	211.4	0.99	16.13	18.15	Aug	
	Sep	243.5	230.2	219.3	242.2	253.9	252.4	187.7	237.5	263.4	210.8	203.7	239.6	137.1	182.8	212.1	189.1	213.2	0.84	16.18	17.87	Sep	
	Oct	245.5	232.1	221.1	245.4	256.2	254.7	189.0	239.8	264.7	212.7	205.2	241.8	137.4	183.9	214.0	190.8	215.0	0.82	16.19	17.57	Oct	
	Nov	247.6	234.3	223.2	248.6	258.7	257.1	190.2	242.1	266.2	214.7	206.9	244.0	138.4	185.0	215.9	192.5	216.8	0.85	16.27	17.26	Nov	
	Dec	249.3	235.8	224.7	251.5	260.3	258.7	191.5	243.8	267.4	216.4	208.4	246.5	139.4	186.2	217.6	194.3	218.6	0.66	15.78	16.92	Dec	
2018	Jan	251.3	237.3	226.3	254.6	262.7	261.1	192.9	245.7	268.9	218.2	210.0	249.2	140.3	187.5	219.5	196.1	220.6	0.83	15.56	16.55	18-Jan	
	Feb	253.4	239.3	228.3	258.0	265.0	263.4	194.5	247.6	270.6	220.0	211.6	251.6	141.3	188.9	221.2	197.8	222.5	0.82	14.76	16.24	Feb	
	Mar	255.6	241.3	230.1	261.3	267.5	265.9	196.1	249.7	272.4	221.8	213.5	254.0	142.1	190.4	223.1	199.4	224.5	0.86	13.75	15.87	Mar	
	Apr	257.7	243.3	232.2	264.5	270.0	268.4	197.7	251.9	274.1	223.6	215.4	256.3	143.0	192.0	225.0	201.1	226.6	0.85	12.89	15.47	Apr	
	May	260.6	245.4	234.5	267.9	273.7	272.0	199.4	254.1	276.0	225.5	217.4	258.7	143.9	193.6	227.3	202.9	228.7	1.10	12.08	15.10	May	
	June	263.8	247.9	237.0	271.2	278.1	276.4	201.3	256.4	278.0	227.6	219.5	261.1	144.8	195.3	229.7	204.7	230.8	1.24	11.68	14.71	June	
	July	267.0	250.1	239.2	274.6	282.6	280.8	203.1	258.7	280.0	229.6	221.8	263.6	145.7	197.0	231.9	206.5	233.0	1.23	11.66	14.33	July	
	August	269.7	252.0	241.3	278.0	286.5	284.6	205.0	261.0	281.2	231.3	223.4	265.3	146.7	198.2	233.5	207.9	234.4	1.00	11.67	13.95	August	
	September	272.0	253.5	242.9	281.5	289.5	287.6	206.7	263.2	282.7	233.2	225.0	267.2	147.7	199.4	235.2	209.4	235.9	0.86	11.70	13.58	September	
	October	274.1	255.9	245.2	285.0	292.0	290.1	208.7	265.6	284.1	235.2	226.8	269.2	148.7	200.8	236.9	210.9	237.6	0.76	11.64	13.21	October	
	November	276.4	257.9	247.2	288.6	294.7	292.8	210.6	267.9	285.7	237.1	228.5	271.3	149.8	202.3	238.7	212.6	239.3	0.83	11.61	12.83	November	
	December	278.5	259.5	249.0	292.2	297.2	295.3	212.5	270.1	287.2	239.0	230.3	273.3	150.8	203.7	240.5	214.1	241.1	0.76	11.73	12.51	December	
2019	January	280.6	261.4	251.0	295.9	299.8	297.9	214.3	272.1	288.6	240.8	231.9	275.4	151.8	205.1	242.3	215.5	242.9	0.77	11.66	12.20	19-Jan	
	February	282.8	263.3	253.0	299.6	302.4	300.5	216.1	274.1	290.2	242.6	233.6	277.4	152.8	206.5	244.1	217.0	244.5	0.76	11.59	11.95	February	
	March	285.0	265.1	254.9	303.3	305.2	303.2	217.9	276.2	292.0	244.4	235.5	279.4	153.8	207.9	245.8	218.4	246.2	0.81	11.54	11.78	MARCH	
	April	287.9	267.1	256.8	307.2	309.0	306.9	219.8	278.4	294.0	246.2	237.5	281.6	154.9	209.3	247.5	219.9	248.0	1.00	11.70	11.69	APRIL	
	May	291.2	269.3	259.1	311.1	313.7	311.6	221.8	280.8	296.1	248.2	239.5	283.9	156.0	210.8	249.4	221.5	250.0	1.15	11.76	11.66	MAY	
	June	294.4	271.8	261.5	315.0	318.2	316.0	223.7	283.2	298.0	250.2	241.6	286.1	157.1	212.3	251.4	223.0	252.1	1.10	11.61	11.66	JUNE	

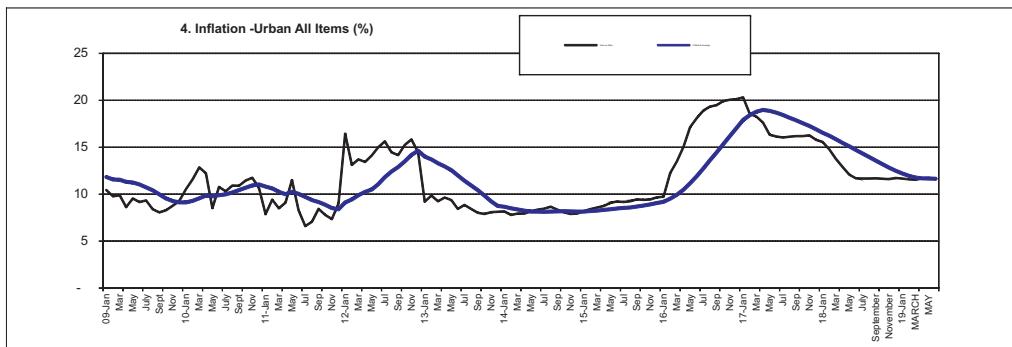


Table 5 Combined Urban And Rural State Consumer Price Index

	All Items	All items less Farm Produce.	All items less Farm Produce and Energy	Imported Food	Food	Alcoholic Bev.	Food & Non Alcoholic Bev.	Tobacco and Kola	Clothing and Footwear	Alcoholic Beverage.	Housing Water, Electricity, Gas and Other Fuel	Maintenance.	Furnishings & Household Equipment.	Health.	Transport	Communication	Recreation & Culture.	Education	Hotels	Restaurant & Hotels	Miscellaneous Goods & Services	Month-on (%)	Year-on (%)	12-month average (%)	
Weights	1000.00	480.09	394.61	114.03	532.25	540.89	10.61	85.68	147.16	50.72	32.25	57.19	4.01	6.65	38.93	10.14	15.78								
2009	Jan	88.9	88.5	90.0		89.1	89.1	97.5	96.2	87.1	81.7	97.9	86.6	95.2	91.2	84.5	97.8	92.1	0.8	15.9	12.1	0.8	15.9	12.1	09-Jan
	Feb	89.5	89.5	90.2		89.6	89.6	98.3	95.7	89.0	81.9	99.0	85.6	95.2	89.7	85.4	98.8	93.1	0.7	17.2	13.1	0.7	17.2	13.1	Feb
	Mar	90.2	89.8	90.8		90.5	90.5	98.0	96.1	88.8	82.5	99.6	85.7	95.2	90.2	87.0	97.9	94.7	0.7	16.7	13.9	0.7	16.7	13.9	Mar
	Apr	90.7	90.2	91.7		91.3	91.3	98.0	96.2	88.5	84.4	102.4	92.0	95.2	90.8	88.9	99.5	95.3	0.6	15.7	14.6	0.6	15.7	14.6	Apr
	May	92.6	92.3	93.8		93.3	93.3	98.8	96.5	89.7	84.2	100.2	94.0	95.2	91.9	88.4	98.0	91.3	2.1	15.1	15.1	2.1	15.1	15.1	May
	June	94.4	93.7	95.1		95.4	95.3	98.6	97.1	93.4	84.8	100.8	89.6	95.2	92.1	88.6	98.2	97.5	1.9	12.2	15.1	1.9	12.2	15.1	June
	July	96.5	95.5	97.5		97.7	97.7	100.4	95.7	95.9	99.6	102.5	87.2	98.3	94.7	90.4	98.3	99.0	2.3	12.0	14.8	2.3	12.0	14.8	July
	Aug	97.8	96.1	96.9		98.8	98.7	99.6	98.3	95.6	100.6	103.0	89.9	100.9	96.2	101.3	98.9	100.1	1.3	12.4	14.8	1.3	12.4	14.8	Aug
	Sep	98.5	97.4	98.2		99.4	99.3	98.6	98.4	96.8	97.2	103.9	93.2	100.9	95.8	99.8	100.1	99.6	0.7	11.5	14.7	0.7	11.5	14.7	Sept
	Oct	99.2	98.4	99.0		100.0	100.0	99.5	98.9	97.9	98.0	104.4	94.6	100.0	96.0	96.6	99.6	98.9	0.7	13.2	14.5	0.7	13.2	14.5	Oct
	Nov	100.0	100.0	100.0	100.0	100.0	100.0	100.0	100.0	100.0	100.0	100.0	100.0	100.0	100.0	100.0	100.0	100.0	0.8	14.2	14.3	0.8	14.2	14.3	Nov
	Dec	102.8	101.7	102.1	102.3	103.1	103.5	103.5	102.0	99.2	102.4	102.0	101.6	100.6	99.9	102.1	102.0	101.9	2.8	16.6	14.3	2.8	16.6	14.3	Dec
2010	Jan	103.6	101.9	102.4	102.2	104.4	104.9	103.6	101.8	98.9	103.9	103.5	102.7	99.5	100.7	103.6	105.5	103.7	0.8	16.5	14.4	0.8	16.5	14.4	10-Jan
	Feb	105.6	103.8	104.7	103.3	106.4	106.9	103.5	103.3	100.6	105.5	104.5	105.3	100.5	99.5	104.3	106.0	105.6	1.9	17.9	14.5	1.9	17.9	14.5	Feb
	Mar	104.0	102.8	103.5	102.6	104.6	104.9	104.7	103.3	100.0	105.3	104.0	102.1	100.4	100.1	104.4	104.0	103.0	-1.5	15.3	14.4	-1.5	15.3	14.4	Mar
	Apr	105.6	103.6	104.7	106.6	106.8	107.2	105.6	104.3	100.8	102.3	103.3	106.8	100.0	98.7	104.7	108.2	105.5	1.5	16.4	14.5	1.5	16.4	14.5	Apr
	May	107.2	106.5	107.9	105.4	107.2	107.5	105.3	106.8	104.6	102.3	105.4	106.6	99.4	101.8	111.0	110.7	109.1	1.6	15.8	14.5	1.6	15.8	14.5	May
	Jun	109.6	107.8	109.2	109.2	111.2	111.5	109.9	109.4	104.4	112.4	108.9	108.4	101.0	101.5	106.4	105.4	109.9	2.2	16.1	14.9	2.2	16.1	14.9	June
	Jul	110.7	107.6	109.2	109.5	112.6	113.2	109.9	110.2	106.2	109.6	109.2	105.9	101.4	103.1	104.9	103.9	110.7	0.9	14.6	15.1	0.9	14.6	15.1	July
	Aug	113.0	109.6	110.8	111.4	114.7	115.2	114.2	113.4	108.9	109.9	111.8	107.4	100.4	103.9	104.3	103.7	110.7	2.1	15.6	15.3	2.1	15.6	15.3	Aug
	Sep	113.8	111.7	112.7	114.1	115.1	114.5	110.9	112.4	113.1	113.5	113.6	112.2	102.2	106.9	109.0	107.0	113.8	0.7	15.6	15.7	0.7	15.6	15.7	Sept
	Oct	114.0	113.5	113.6	113.9	114.4	114.5	113.5	113.9	111.2	116.4	118.1	108.1	104.1	110.0	111.5	110.6	110.5	0.1	15.0	15.8	0.1	15.0	15.8	Oct
	Nov	113.6	112.1	111.5	116.5	115.7	115.4	114.0	111.8	113.9	114.8	110.5	112.8	102.7	106.2	107.5	108.5	112.6	-0.3	13.6	15.7	-0.3	13.6	15.7	Nov
	Dec	115.9	113.8	113.7	117.0	117.1	117.2	113.7	113.6	114.3	114.7	112.6	114.0	103.6	106.6	109.0	108.2	111.5	2.0	12.7	15.4	2.0	12.7	15.4	Dec
2011	Jan	119.7	119.5	118.9	120.1	116.5	120.5	113.0	114.0	116.4	114.5	111.1	110.0	101.8	108.5	109.4	108.2	114.5	3.3	15.6	15.3	3.3	15.6	15.3	11-Jan
	Feb	118.8	116.7	116.4	129.4	119.4	120.2	116.1	116.8	114.1	116.6	111.4	121.9	107.4	108.4	109.7	110.1	113.8	-0.8	12.5	14.9	-0.8	12.5	14.9	Feb
	Mar	121.1	119.6	120.2	120.6	119.9	119.8	115.2	117.3	114.2	116.6	115.0	118.4	107.8	109.2	110.6	109.1	111.9	1.9	16.4	15.0	1.9	16.4	15.0	Mar
	Apr	119.4	119.2	119.4	122.6	121.1	120.10	116.4	116.1	125.1	116.0	116.7	116.9	107.2	107.8	111.2	111.9	114.1	-1.3	13.1	14.7	-1.3	13.1	14.7	Apr
	May	121.2	120.6	120.8	124.4	120.1	120.40	116.9	119.0	125.5	116.7	113.8	115.4	108.1	108.8	112.1	112.0	116.4	1.5	13.0	14.5	1.5	13.0	14.5	May
	Jun	122.6	122.4	122.8	111.5	121.9	121.49	116.0	118.6	126.0	117.1	118.8	120.1	108.7	109.2	112.6	112.1	120.6	1.1	11.8	14.1	1.1	11.8	14.1	June
	Jul	123.6	122.8	123.4	113.3	122.4	122.45	112.5	117.9	126.0	118.2	117.9	122.1	108.5	116.2	112.8	113.1	123.2	0.8	11.7	13.8	0.8	11.7	13.8	Jul
	Aug	125.6	123.3	123.8	118.1	126.9	127.0	118.6	119.4	128.4	120.1	119.9	121.8	108.8	110.9	113.2	114.2	125.4	1.6	11.1	13.5	1.6	11.1	13.5	Aug
	Sep	127.4	125.3	125.3	119.4	128.2	128.0	118.0	121.2	127.2	118.4	121.3	123.1	108.3	111.0	114.2	114.0	125.2	1.4	11.9	13.2	1.4	11.9	13.2	Sept
	Oct	128.6	127.8	128.0	118.1	128.4	127.9	120.1	121.8	131.0	118.8	121.8	123.0	108.6	122.1	114.6	114.8	126.4	0.9	12.8	13.0	0.9	12.8	13.0	Oct
	Nov	128.6	127.4	127.3	128.6	129.1	129.6	121.8	122.6	130.5	120.7	122.2	123.7	108.9	121.6	114.6	115.1	129.7	0.0	13.1	13.0	0.0	13.1	13.0	Nov
	Dec	129.0	127.1	127.0	128.8	131.1	131.1	122.2	124.1	135.1	120.6	123.4	129.2	108.1	117.9	114.6	117.0	127.1	0.3	11.3	12.8	0.3	11.3	12.8	Dec
2012	Jan	131.3	129.9	130.7	128.4	132.4	134.0	126.4	122.3	128.7	120.6	122.2	128.2	111.0	119.2	115.2	117.2	130.8	1.8	9.7	12.3	1.8	9.7	12.3	12-Jan
	Feb	131.6	130.0	130.9	128.4	131.8	131.7	126.4	122.3	128.8	120.6	122.2	128.2	111.0	119.2	115.2	117.2	130.8	0.3	10.9	12.2	0.3	10.9	12.2	Feb
	Mar	134.4	137.1	136.5	130.3	134.9	134.7	127.4	132.3	142.7	133.2	130.2	130.0	114.6	117.9	126.7	120.2	131.7	2.1	11.0	11.8	2.1	11.0	11.8	Mar
	Apr	134.4	137.0	136.5	131.8	135.0	134.8	127.7	132.0	142.3	133.6	130.7	130.3	115.1	118.3	125.5	121.0	131.8	0.01	12.5	11.7	0.01	12.5	11.7	Apr
	May	135.4	138.9	138.5	132.9	136.5	136.3	128.1	132.6	142.6	133.9	131.3	130.7	115.3	118.8	125.7	121.9	132.2	0.74	11.7	11.6	0.74	11.7	11.6	May
	Jun	136.5	139.8	138.1	133.0	137.4	137.2	128.5	132.6	146.3	134.3	131.6	131.3	115.7	119.0	125.9	122.6	132.5	0.83	11.4	11.6	0.83	11.4	11.6	June
	Jul	136.9	140.4	138.9	133.3	138.0	137.7	129.0	132.9	146.4	134.2	131.6	131.6	115.8	119.1	125.8	122.9	132.7	0.25	10.7	11.5	0.25	10.7	11.5	Jul
	Aug	137.8	140.9	139.4	134.5	139.1	138.9	129.4	133.5	147.2	134.7	132.2	132.1	116.0	119.3	126.6	123.0	132.8	0.65	9.7	11.4	0.65	9.7	11.4	Aug
	Sep	139.0	141.3																						

2014	Jan	154.4	155.5	153.3	149.0	158.6	158.3	142.7	148.4	160.2	149.2	144.9	145.3	122.1	130.2	138.7	134.0	146.1	0.68	7.8	8.3	14-Jan
	Feb	155.1	156.1	154.2	149.6	159.5	159.2	143.2	149.2	160.7	149.9	145.4	145.9	122.3	131.3	138.9	134.4	146.4	0.49	7.7	8.1	Feb
	Mar	156.4	156.8	154.9	150.7	161.2	160.8	144.0	149.9	161.6	150.8	146.4	146.9	122.8	131.8	139.5	135.2	147.2	0.81	7.6	8.1	Mar
	Apr	157.3	157.6	155.7	151.5	162.3	162.0	144.7	150.7	162.3	151.3	146.9	147.6	123.4	132.5	139.9	135.7	147.4	0.59	7.5	8.0	Apr
	May	158.5	158.6	156.7	152.8	163.6	163.2	145.6	152.1	163.4	152.6	148.0	148.6	124.0	133.5	141.0	136.9	148.6	0.77	7.8	7.9	May
	Jun	159.7	159.7	157.6	154.0	164.9	164.5	146.6	153.2	164.7	153.7	148.9	149.6	124.7	134.3	141.4	137.8	149.7	0.74	8.0	7.9	Jun
	Jul	160.7	159.8	157.9	154.4	166.0	165.6	147.5	154.1	165.8	154.2	149.5	150.0	124.8	134.9	141.6	138.7	150.4	0.60	8.1	7.8	Jul
	Aug	161.4	160.3	158.5	155.1	166.8	166.5	148.2	154.9	166.2	155.0	150.3	150.7	125.0	135.5	142.5	139.2	151.2	0.47	8.37	7.86	Aug
	Sep	162.4	161.5	159.8	156.3	167.9	167.5	149.0	156.0	167.1	156.3	150.9	151.2	125.2	136.1	143.8	139.9	152.2	0.62	8.24	7.88	Sep
	Oct	163.3	162.4	160.7	157.3	168.8	168.4	149.9	157.1	167.7	157.2	152.0	151.8	125.7	136.5	144.8	141.0	153.3	0.52	8.02	7.90	Oct
	Nov	164.2	163.3	161.6	158.3	169.7	169.3	150.5	158.2	168.6	158.2	153.0	152.3	126.0	137.0	145.8	141.9	154.2	0.57	7.90	7.91	Nov
	Dec	165.5	164.6	162.9	159.7	171.2	170.9	151.6	159.6	169.7	159.4	154.2	153.4	126.2	137.7	146.6	143.1	155.4	0.82	7.96	7.91	Dec
2015	Jan	166.9	165.8	164.2	161.0	172.7	172.3	152.6	161.1	170.9	160.8	155.5	154.4	126.4	138.6	147.7	144.4	156.5	0.81	8.09	7.94	15-Jan
	Feb	168.0	166.9	165.2	162.4	173.9	173.5	153.5	162.4	172.0	161.8	156.6	155.1	126.8	139.2	148.8	145.4	157.6	0.67	8.29	7.99	Feb
	Mar	169.5	168.3	166.6	163.7	175.6	175.2	154.6	163.8	173.2	163.3	158.0	156.2	127.0	139.9	149.8	146.6	159.0	0.91	8.40	8.05	Mar
	Apr	170.8	169.3	167.5	165.1	177.1	176.7	155.4	164.7	174.5	164.2	158.8	157.4	127.2	140.5	150.5	147.5	159.9	0.74	8.56	8.14	Apr
	May	172.6	171.2	169.3	166.8	178.9	178.5	156.9	166.8	176.6	165.9	160.8	159.1	127.6	141.7	151.9	149.1	161.8	1.08	8.90	8.24	May
	Jun	174.2	172.6	170.5	168.5	180.8	180.4	158.2	168.3	177.9	167.1	161.5	160.6	128.0	142.8	153.3	150.6	163.6	0.93	9.10	8.33	Jun
	Jul	175.5	173.7	171.5	170.0	182.2	181.8	159.3	169.6	179.0	167.7	162.6	161.6	128.3	143.7	154.3	151.8	164.5	0.73	9.24	8.43	Jul
	Aug	176.6	174.8	172.5	171.4	183.3	182.9	160.2	170.6	180.2	168.4	163.3	162.4	128.6	143.9	155.8	152.7	165.4	0.60	9.38	8.52	Aug
	Sep	177.5	175.7	173.3	172.8	184.3	183.9	161.3	171.4	181.0	169.5	163.9	163.3	128.7	144.5	157.5	153.7	166.1	0.55	9.30	8.61	Sep
	Oct	178.2	176.4	174.0	173.6	185.1	184.6	162.1	172.3	181.5	169.7	164.3	164.2	129.0	145.0	158.7	154.3	166.9	0.39	9.16	8.70	Oct
	Nov	179.4	177.4	175.0	175.1	186.5	186.1	162.9	173.4	182.2	170.1	164.8	165.8	129.3	145.6	159.6	155.0	167.9	0.66	9.26	8.81	Nov
	Dec	181.1	178.7	176.3	177.0	188.6	188.1	164.4	175.5	183.2	171.1	166.0	167.5	130.0	146.9	160.4	156.4	169.9	0.95	9.41	8.93	Dec
2016	Jan	182.7	180.2	177.6	178.9	190.3	189.8	166.1	177.2	184.4	172.0	167.4	168.9	130.6	147.8	162.6	158.0	171.6	0.88	9.48	9.05	16-Jan
	Feb	186.0	184.6	180.5	184.0	193.2	192.6	168.2	179.8	190.9	174.1	169.4	171.6	131.6	149.2	167.2	159.5	172.8	1.79	10.69	9.25	Feb
	Mar	189.9	188.0	183.2	188.9	197.5	197.0	170.6	183.9	195.3	177.6	171.3	175.3	132.3	151.1	169.5	160.1	176.1	2.14	12.04	9.56	Mar
	Apr	192.6	190.8	185.5	192.4	200.3	199.7	172.3	185.9	198.4	180.0	172.5	178.5	133.3	153.0	172.7	160.7	177.5	1.40	12.77	9.92	Apr
	May	197.4	195.9	190.2	198.0	205.0	204.4	176.8	190.3	204.8	184.4	176.3	182.7	134.2	156.4	177.7	165.3	182.9	2.50	14.35	10.38	May
	Jun	200.5	199.3	193.1	202.4	207.6	207.0	179.5	194.3	210.3	186.6	178.6	185.4	135.1	157.3	180.8	166.9	184.7	1.58	15.09	10.90	Jun
	Jul	202.8	201.5	194.3	204.4	209.9	209.3	181.1	196.4	213.8	180.3	180.0	187.0	135.6	158.2	183.0	168.1	185.7	1.12	15.53	11.43	Jul
	Aug	205.0	203.2	195.8	206.2	212.7	212.0	182.4	198.4	215.6	188.2	180.8	188.4	136.0	159.0	185.6	168.4	186.5	1.09	16.10	12.00	Aug
	Sep	206.7	205.0	197.1	208.1	214.4	213.7	183.8	200.5	217.4	189.4	181.6	189.6	136.4	159.9	189.0	168.8	187.4	0.83	16.43	12.60	Sep
	Oct	208.4	206.5	198.8	209.9	216.2	215.5	185.1	202.7	219.2	190.6	182.7	190.8	136.8	160.8	192.4	168.2	188.5	0.84	16.95	13.25	Oct
	Nov	210.1	207.8	200.1	211.6	218.0	217.3	186.2	204.9	220.5	191.9	183.6	192.0	137.0	161.7	194.4	169.6	189.4	0.79	17.10	13.90	Nov
	Dec	212.2	208.7	200.9	213.7	220.8	220.1	187.4	206.9	221.7	193.4	184.6	193.6	137.2	162.6	196.4	170.8	190.9	1.04	17.20	14.54	Dec
2017	Jan	214.4	210.0	202.0	215.7	223.6	222.8	188.4	208.7	223.0	194.8	185.7	195.3	137.4	163.5	197.9	171.7	192.1	1.00	17.34	15.18	17-Jan
	Feb	217.5	212.1	203.9	218.5	228.0	227.2	189.3	210.5	225.7	195.8	186.7	196.4	137.5	164.2	199.8	172.2	192.4	1.47	16.98	15.70	Feb
	Mar	221.2	214.6	206.2	221.4	232.8	231.9	190.9	213.4	228.6	198.0	188.5	198.4	137.8	166.2	201.8	173.5	194.4	1.69	16.47	16.05	Mar
	Apr	224.7	217.1	208.7	223.3	237.4	236.5	192.7	216.6	230.6	200.3	190.3	200.4	138.0	168.3	204.0	174.7	196.8	1.59	16.69	16.37	Apr
	May	229.0	219.7	211.1	226.2	243.4	242.4	194.5	220.1	232.9	202.6	192.2	202.8	138.5	170.3	206.2	176.6	199.0	1.92	16.02	16.50	May
	Jun	232.6	222.4	213.9	229.7	248.0	247.1	195.9	223.5	234.8	205.2	194.4	205.1	138.8	171.3	208.4	178.4	201.2	1.57	16.01	16.56	Jun
	Jul	235.4	224.6	216.3	231.7	251.6	250.7	197.3	226.1	235.9	207.6	197.0	206.7	139.0	172.3	209.9	180.3	202.9	1.18	16.08	16.60	Jul
	Aug	237.6	226.6	218.6	234.6	254.3	253.4	198.5	228.7	237.0	209.8	198.8	208.3	139.3	173.0	211.3	181.7	204.5	0.95	15.91	16.58	Aug
	Sep	239.4	228.2	220.2	237.5	256.4	255.4	199.5	230.9	238.1	211.8	199.9	209.7	139.5	173.8	212.4	182.4	205.9	0.74	15.81	16.52	Sep
	Oct	241.1	229.8	221.9	240.5	258.4	257.4	200.5	232.8	239.2	213.4	201.1	211.1	139.8	174.7	213.8	183.2	207.2	0.72	15.67	16.41	Oct
	Nov	242.8	231.3	223.4	243.5	260.5	259.5	201.5	234.6	240.3	215.0	202.3	212.6	140.3	175.4	215.1	184.0	208.6	0.72	15.59	16.29	Nov
	Dec	244.1	232.2	224.2	246.1	261.9	260.9	202.5	235.8	241.3	216.2	203.4	214.3	140.9	176.1	216.4	184.9	210.1	0.54	15.02	16.10	Dec
2018	Jan	246.0	233.8	225.9	248.9	264.1	263.1	203.7	237.3	242.7	217.8	204.7	216.1	141.6	177.2	218.0	186.4	211.8	0.77	14.76	15.89	18-Jan
	Feb	247.9	235.4	227.4	252.0	266.3	265.3	205.3	239.1	244.3	219.4	206.2	217.8	142.4	178.3	219.5	187.8	213.4	0.77	13.96	15.64	Feb
	Mar	249.9	237.4	229.4	255.0	268.6	267.6	206.8	240.8	246.1	221.1	207.8	219.6	143.1	179.4	221.3	189.3	214.9	0.82	12.99	15.34	Mar
	Apr	252.0	239.6	231.8	257.8	271.0	270.0	208.3	242.7	247.6	222.7	209.5	221.3	143.8	180.8	223.0	190.6	216.6	0.82	12.13	14.95	Apr
	May	254.7	242.1	234.5	260.8	274.4	273.4	209.8	244.6	249.5	224.4	211.3	223.2	144.6	182.2	224.8	192.1	218.5	1.08	11.20	14.53	May
	June	257.8	244.6	237.1	264.0	278.6	277.5	211.7	246.7	251.5	226.2	213.1	225.2	145.4	183.7	227.0	193.7	220.3	1.23	10.83	14.08	June
	July	260.9	246.6	239.0	267.2	282.7	281.6	213.4	248.6	253.3	228.0	215.1	227.1	146.2	185.1	229.0	195.2	222.2	1.18	10.83	13.64	July
	August	263.4	248.5	241.0	270.4	286.2	285.1	215.1	250.5	254.4	229.4	216.4	228.4	147.0	186.1	230.3	196.3	223.5	0.96	10.84	13.21	August
	September	266.5	250.1	242.8	273.6	288.																

**Table 5 Combined Urban And Rural State Consumer Price Index (Base Period:
November 2009 = 100)**

	Jun-18		May-19		Jun-19	
State	Food	All	Food	All	Food	All
		Items		Items		Items
Abia	285.1	264.5	312.5	288.3	316.0	290.9
Abuja	275.5	259.7	309.2	285.6	316.4	290.2
Adamawa	275.5	254.6	312.4	281.4	315.6	285.0
Akwa Ibom	279.2	257.8	309.7	282.4	315.3	285.7
Anambra	280.0	262.8	314.4	291.6	315.9	294.0
Bauchi	262.8	274.7	291.6	312.9	294.0	317.0
Bayelsa	294.0	270.2	320.6	292.1	323.3	293.3
Benue	278.1	257.1	313.5	284.3	316.5	286.9
Borno	272.3	253.8	310.6	279.6	314.2	282.2
Cross River	279.9	251.0	310.4	271.4	315.0	275.7
Delta	286.5	255.6	315.8	276.9	317.7	279.8
Ebonyi	276.5	259.4	311.9	287.6	314.7	289.9
Edo	274.9	266.5	313.8	294.9	319.7	298.4
Ekiti	272.7	244.1	307.9	270.2	311.3	272.1
Enugu	278.1	250.4	312.5	276.9	317.8	279.9
Gombe	272.1	257.7	309.7	287.2	313.8	290.0
Imo	273.0	242.3	307.8	266.4	314.2	269.3
Jigawa	274.1	258.2	306.7	287.4	310.2	290.0
Kaduna	274.6	262.3	321.8	297.7	322.7	298.8
Kano	276.0	262.1	315.3	293.1	318.0	294.7
Katsina	278.6	243.7	309.2	267.4	312.3	270.5
Kebbi	275.0	265.7	318.2	302.1	321.6	304.8
Kogi	290.1	275.4	308.7	296.8	318.6	302.5
Kwara	277.9	326.4	313.1	352.4	317.9	355.8
Lagos	283.4	271.4	319.1	299.4	325.5	304.6
Nassarawa	277.9	263.0	316.3	292.2	318.4	293.5
Niger	275.9	264.6	313.4	295.5	317.8	297.9
Ogun	282.1	277.7	320.4	307.0	325.9	310.2
Ondo	277.0	263.0	318.1	294.6	322.5	297.8
Osun	279.9	264.1	308.7	287.6	316.6	291.9
Oyo	284.4	273.4	316.5	298.9	320.8	302.4
Plateau	274.7	263.2	308.4	291.5	312.5	294.7
Rivers	284.0	259.7	310.3	282.8	319.4	289.2
Sokoto	272.0	258.5	311.2	287.7	313.2	288.6
Taraba	276.8	252.8	312.3	281.8	316.7	283.7
Yobe	279.0	263.9	312.7	292.4	313.7	293.8
Zamfara	273.5	259.4	313.2	291.4	315.7	293.7

Note: Indices may not be used for inter-state price comparison because market baskets differ from state to state

Acknowledgements/Contacts

Acknowledgements

We acknowledge our technical partners, Proshare in the design, concept and production of this publication.





Contact Us

 @nigerianstat

 NBSNigeria

 www.nigerianstat.gov.ng

 **Head Office Address**
Plot 762, Independence Avenue, Central
Business District, FCT, Abuja Nigeria.

 +234 803 386 5388

 feedback@nigerianstat.gov.ng