



NATIONAL BUREAU OF STATISTICS

Consumer Price Index September 2018

(BASE PERIOD DECEMBER 2009 = 100)

Report Date: October 2018

Data Source: National Bureau of Statistics (NBS)

Content

Brief Methodology	1
All Items Index	5
Food Index	7
All Items Less Farm Produce	9
State Profiles	9
Infographics	11
Statistical News	17
Acknowledgements/Contacts	28

Brief Methodology

The CPI measures the average change over time in prices of goods and services consumed by people for day-to-day living. The construction of the CPI combines economic theory, sampling and other statistical techniques using data from other surveys to produce a weighted measure of average price changes in the Nigerian economy. The weighting occurs to capture the importance of the selected commodities in the entire index. The production of the CPI requires skills of economists, statisticians, computer scientists, data collectors and others.

Key in the construction of the price index is the selection of the market basket of goods and services. Every month, 10,534 informants spread across the country provide price data for the computation of the CPI. The market items currently comprise of 740 goods and services regularly priced.

The first stage in the calculation of the CPI is the collection of prices on each item (740 goods and services) from outlets in each sector (rural or urban) for each state. Prices are then averaged for each item per sector across the state. The next step is to use the average price to calculate the basic index for each commodity: The current year price of each commodity is compared with a base year's price to obtain a relative price.

Next we use the Laspeyres formula to compute an aggregated index for each class (which has a multitude of commodities which have similar consumption purposes): Here the sum of the product of weights (obtained from the expenditure survey) and relative prices for each item is divided by the sum of the weight of the items in that class, and the result multiplied by 100 gives the required index number. This index number is still classified according to the urban or rural classification sector for each of the 36 states and the FCT. This yields 85 classes then 48 groups which are then reclassified into 12 Divisions to derive:

1. The country composite index
2. The Urban National index
3. The Rural National index
4. The Combined Urban and Rural State Composite index

The survey methodology generates 3774 all items indices for all states and the FCT.


















This edition of the Statistical News contains the revised Consumer Price Index (CPI) based on Nigeria Living Standard Survey (NLSS) 2003/2004. The consumption expenditure data were re-valued to November 2009, which is the base period for the revised CPI.

The May 2003 and September 1985 based indices are being continued using factors derived from the new CPI. These indices will yield the same price change for any commodity group contained in all the series.

A new subindex – Imported Food Index- is available in the revised CPI.

Note: The urban and rural indices were weighted with the ratio of their populations to the national i.e. 0.455 and 0.545 respectively to compute the composite indices at the 12 Classification of Individual Consumption by Purpose (COICOP) functions and all items levels. This may cause variance between a recalculated all items index using the weights published on table 2 and the published all items index because the published weights were computed only from consumption expenditure survey result. The following breakdown highlights a non-exhaustive list of the components of the current CPI:

The following breakdown highlights a non-exhaustive list of the components of the current CPI:

FOOD AND NON-ALCOHOLIC BEVERAGES						
	Food	Bread and cereals	Meat	Fish	Milk, cheese and eggs	Oils and fats
ALCOHOLIC BEVERAGES, TOBACCO AND KOLA						
	Fruit	Vegetables	Potatoes, Yam & other tubers	Food products n.e.c	Coffee, tea and cocoa	Soft drinks
CLOTHING AND FOOTWEAR						
	Clothing materials, other articles of clothing	Garments	Cleaning, repair and hire of clothing	Shoes and other footwear	Repair and hire of footwear	

HOUSING, WATER, ELECTRICITY, GAS



Actual and imputed rentals for housing



Water supply



Miscellaneous services relating to the dwelling



Electricity



Gas



Liquid fuel



Solid fuels

FURNISHINGS, HOUSEHOLD EQUIPMENT



Furniture and furnishings



Carpets and other floor coverings



Repair of Furniture



Household textiles



Major household appliances whether electric or not



Repair of household appliances



Glassware, tableware and household utensils



Non-durable household goods



Domestic services and household services

HEALTH



Pharmaceutical products



Medical services



Dental services



Paramedical services



Hospital services

TRANSPORT



Motor cars



Motor cycles



Bicycles



Vehicle spare parts



Fuels and lubricants for personal transportation



Maintenance and repair of personal transport



Passenger transport by road



Passenger transport by air



Passenger transport by sea and inland waterways

COMMUNICATION



Postal services



Telephone and telefax equipment



Telephone and telefax services

RECREATION AND CULTURE



Audio-visual, photographic and information processing equipment



Photographic development



Musical instrument



Recreational and sporting services



Games of chance

EDUCATION



Books & stationery

RESTAURANTS AND HOTELS



Catering services



Accommodation services

MISCELLANEOUS GOODS AND SERVICES



Hairdressing salons and personal grooming establishments



Appliances, articles and products for personal care



Jewellery, clocks and watches



Insurance



Other services

All Item Index

The consumer price index, (CPI) which measures inflation increased by 11.28 percent (year-on-year) in September 2018. This is 0.05 percent points higher than the rate recorded in August 2018 (11.23) percent.

Increases were recorded in all COICOP divisions that yielded the Headline index.

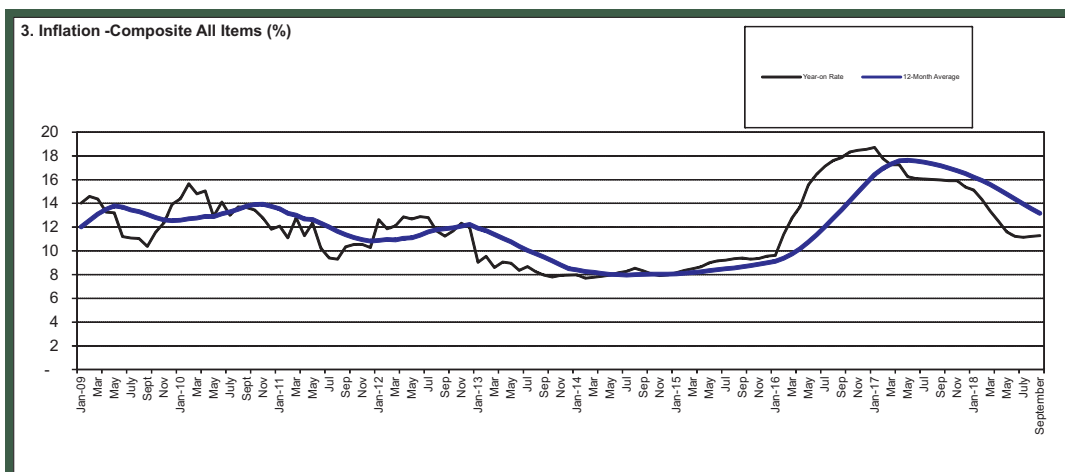
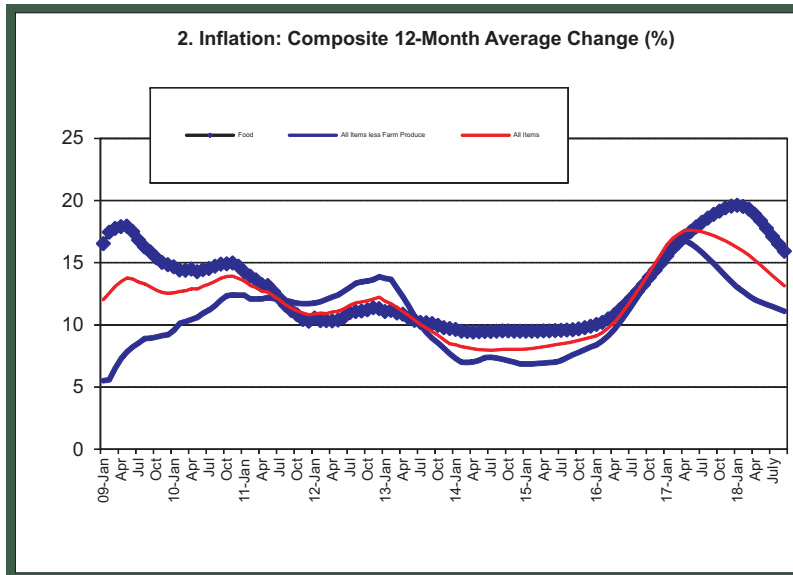
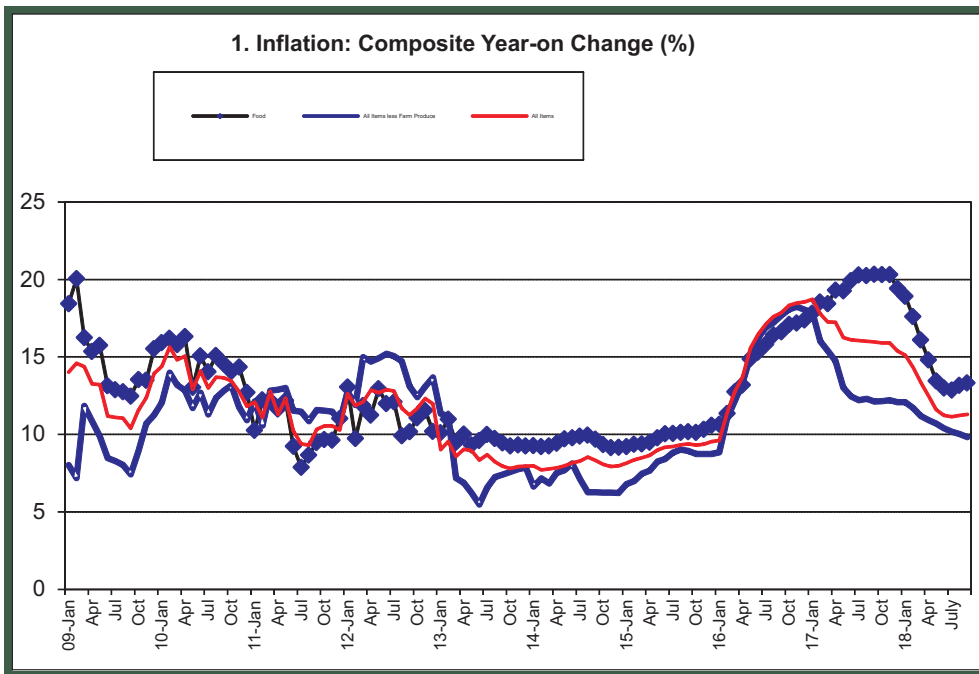
On month-on-month basis, the Headline index increased by 0.84 percent in September 2018, down by 0.21 percent points from the rate recorded in August 2018 (1.05) percent.

The percentage change in the average composite CPI for the twelve months period ending September 2018 over the average of the CPI for the previous twelve months period was 13.16 percent, showing 0.39 percent point from 13.55 percent recorded in August 2018.

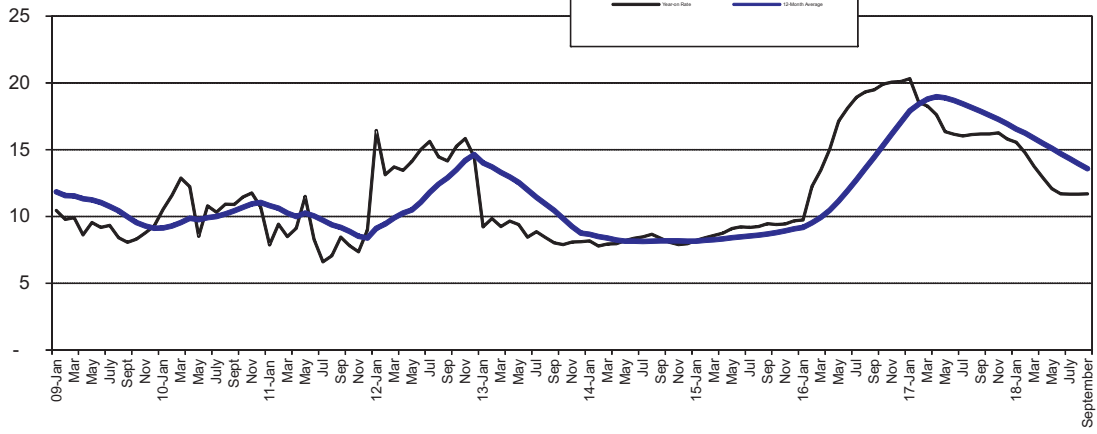
The urban inflation rate increased by 11.70 percent (year-on-year) in September 2018 from 11.67 percent recorded in August 2018, while the rural inflation rate increased by 10.92 percent in September 2018 from 10.84 percent in August 2018.

On a month-on-month basis, the urban index rose by 0.86 percent in September 2018, down by 0.14 from 1.00 percent recorded in August, while the rural index also rose by 0.82 percent in September 2018, down by 0.14 percent from the rate recorded in August 2018 (0.96) percent.

The corresponding twelve-month year-on-year average percentage change for the urban index is 13.58 percent in September 2018. This is less than 13.95 percent reported in August 2018, while the corresponding rural inflation rate in September 2018 is 12.80 percent compared to 13.21 percent recorded in August 2018.



4. Inflation -Urban All Items (%)



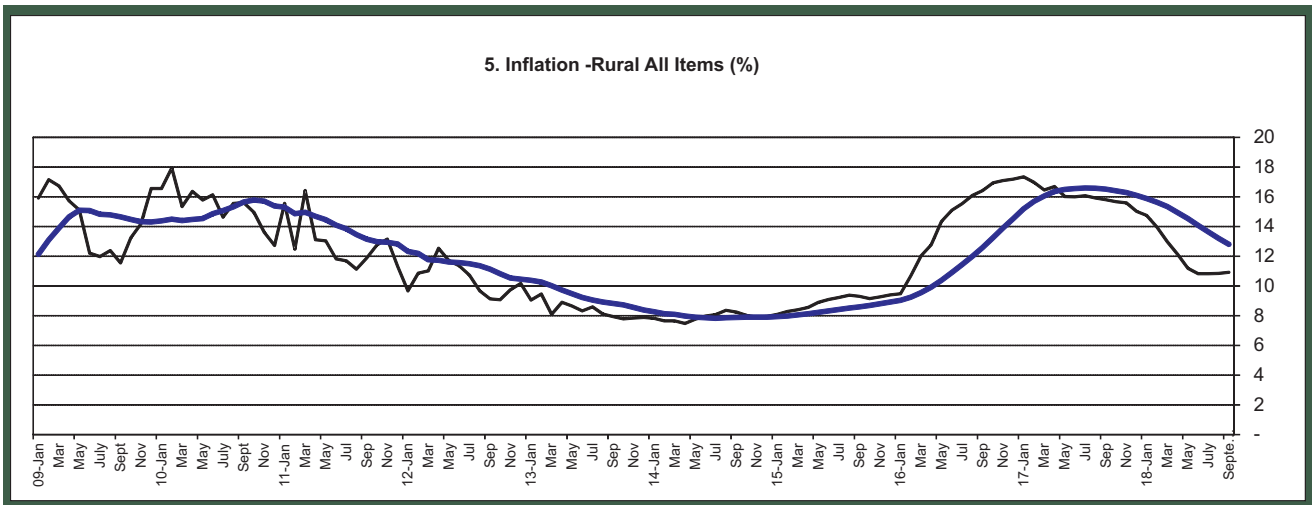
Food Index

The composite food index rose by 13.31 percent in September 2018 compared to 13.16 percent in August 2018.

This rise in the food index was caused by increases in prices of Potatoes, yams and other tubers, vegetables, fruits, meat, milk, cheese and egg, Bread and cereals, and Fish.

On month-on-month basis, the food sub-index increased by 1.00 percent in September 2018, down by 0.42 percent points from 1.42 percent recorded in August.

The average annual rate of change of the Food sub-index for the twelve-month period ending September 2018 over the previous twelve-month average was 15.92 percent, 0.58 percent points from the average annual rate of change recorded in August (16.50) percent.



All Items Less Farm Produce

The "All items less farm produce" or Core inflation, which excludes the prices of volatile agricultural produce stood at 9.8 percent in September 2018, down by 0.2 percent from the rate recorded in August 2018 (10.0) percent.

On month-on-month basis, the core sub-index increased by 0.64 percent in September 2018. This was down by 0.14 percent when compared with 0.78 percent recorded in August 2018.

The highest increases were recorded in prices of, Fuels and lubricants for personal transport, Vehicle Spare parts, Dental services, Tobacco, carpets and other floor coverings, furniture and furnishing, Hospital services.

The average 12-month annual rate of change of the index was 11.09 percent for the twelve-month period ending September 2018; this is 0.19 percent points lower than 11.28 percent recorded in August.

State Profiles

In analysing price movements under this section, note that the CPI is weighted by consumption expenditure patterns which differ across states. Accordingly, the weight assigned to a particular food or non-food item may differ from state to state making interstate comparisons of consumption basket inadvisable and potentially misleading.

All Items Inflation

In September 2018, all items inflation on year on year basis was highest in Kaduna (12.93%), Ebonyi (12.86%) and Bayelsa (12.83%), while Cross River (8.42%), Plateau (8.77%) and Ogun (9.22%) recorded the slowest rise in headline Year on Year inflation.

On month on month basis however, September 2018 all items inflation was highest in Kebbi (1.91%), Kwara (1.89%), and Taraba (1.47%), while Cross River, Nasarawa and Plateau all recorded negative inflation or price deflation (general decrease in the general price level of goods and services or a negative inflation rate) in September 2018.

Food Inflation

In September 2018, food inflation on a year on year basis was highest in Kwara (17.17%), Bayelsa (16.62%) and Abuja (15.70%), while Plateau (8.82%), Abia (10.10%) and Ogun (11.11%) recorded the slowest rise in food inflation.

On month on month basis however, September 2018 food inflation was highest in Kwara (3.39%), Adamawa (2.59%) and Kebbi (2.23%), while Katsina, Kogi, Nasarawa, Niger and Plateau all recorded food price deflation or negative inflation (general decrease in the general price level of goods and services or a negative inflation rate) in September 2018.

**Table 5 Combined Urban And Rural State Consumer Price Index
(Base Period: November 2009 = 100)**

	Sep-17		Aug-18		Sep-18	
State	Food	All	Food	All	Food	All
		Items		Items		Items
Abia	262.3	245.0	288.5	268.3	288.8	269.1
Abuja	245.8	237.1	282.4	264.7	284.4	267.3
Adamawa	250.1	232.7	280.2	258.1	287.4	261.9
Akwa Ibom	259.0	239.4	287.8	264.1	292.5	266.3
Anambra	255.3	242.0	286.7	268.2	287.4	269.1
Bauchi	242.0	255.1	268.2	284.3	269.1	286.8
Bayelsa	263.6	246.5	302.9	275.5	307.4	278.1
Benue	257.2	240.2	288.5	264.5	294.7	267.5
Borno	253.5	236.9	280.2	258.8	283.7	260.7
Cross River	260.0	236.5	290.1	256.7	291.4	256.4
Delta	257.6	235.7	290.8	259.3	296.1	261.6
Ebonyi	253.3	239.8	290.0	268.1	291.2	270.6
Edo	251.2	247.8	286.1	272.6	287.3	274.0
Ekiti	247.7	223.9	279.0	249.6	281.6	252.4
Enugu	256.8	230.5	286.6	256.1	291.2	259.0
Gombe	249.1	237.2	280.6	264.1	280.8	265.0
Imo	252.6	224.8	284.5	247.3	289.9	250.6
Jigawa	249.9	237.8	282.2	265.2	284.7	267.6
Kaduna	253.9	243.9	287.2	271.6	292.9	275.4
Kano	258.0	244.4	284.9	269.0	287.3	272.1
Katsina	254.6	225.3	288.5	250.1	288.2	252.1
Kebbi	250.5	244.3	280.6	270.3	286.9	275.4
Kogi	262.9	252.7	292.8	279.3	292.8	281.9
Kwara	255.1	308.5	289.1	333.0	298.9	339.3
Lagos	256.7	250.5	292.9	278.7	293.1	279.5
Nassarawa	256.3	244.8	288.7	270.5	285.8	270.0
Niger	248.9	243.1	281.7	270.2	280.4	271.0
Ogun	261.8	260.6	288.6	283.0	290.8	284.6
Ondo	256.8	244.8	288.8	271.4	293.9	275.3
Osun	257.4	244.1	285.8	268.3	290.8	271.7
Oyo	260.2	253.2	291.2	278.4	292.9	280.0
Plateau	257.2	247.3	282.7	270.6	279.9	269.0
Rivers	257.0	237.2	289.9	264.6	292.2	266.1
Sokoto	251.3	240.6	278.7	263.0	283.7	265.7
Taraba	254.9	234.1	285.2	258.8	290.0	262.6
Yobe	253.0	241.3	285.9	270.2	291.7	273.4
Zamfara	252.0	239.0	283.1	267.2	286.1	269.5

Note: Indices may not be used for inter-state price comparison because market baskets differ from state to state

HEADLINE CPI IN SEPTEMBER 2018 ROSE BY

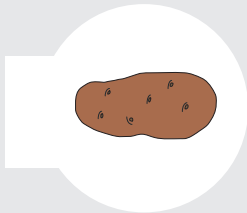
11.28%

**YEAR-ON-YEAR
(FROM 11.23% IN AUGUST 2018)**

0.84%

**MONTH-ON-MONTH
(FROM 1.05% IN AUGUST 2018)**

HIGHEST INCREASE RECORDED IN



**POTATOES, YAM
AND OTHER TUBERS**



BREAD AND CEREALS



VEGETABLES



FRUITS



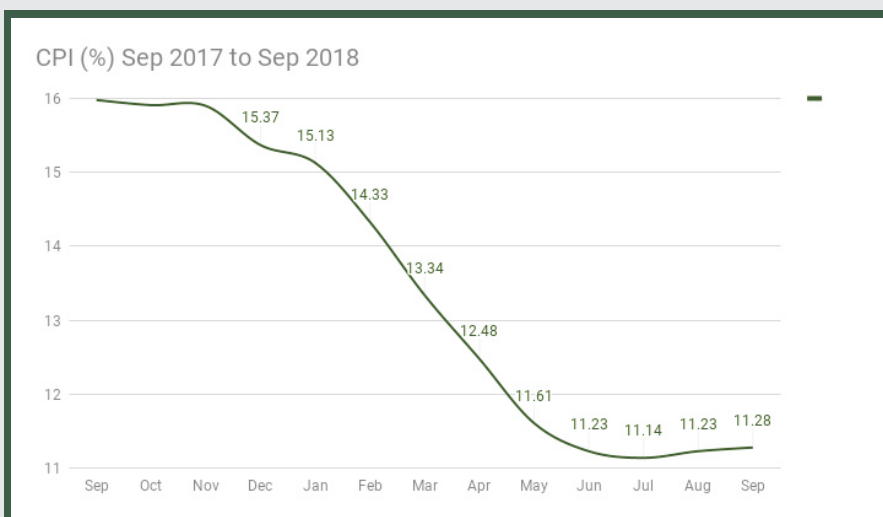
OIL AND FATS



FISH



MEAT



The CPI (Consumer Price Index) measures the average change over time in prices of goods and services consumed by people for day-to-day living i.e it measures the inflation rate

FOOD SUB-INDEX IN SEPTEMBER 2018 ROSE BY

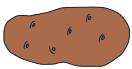
13.31%

**YEAR-ON-YEAR
(FROM 13.16% IN AUGUST 2018)**

1.00%

**MONTH-ON-MONTH
(FROM 1.42% IN AUGUST 2018)**

HIGHEST INCREASE RECORDED IN



**POTATOES, YAM
AND OTHER
TUBERS**



**BREAD &
CEREALS**



FISH



VEGETABLES



FRUITS



OIL & FATS



MEAT

The CPI (Consumer Price Index) measures the average change over time in prices of goods and services consumed by people for day-to-day living i.e it measures the inflation

CORE SUB-INDEX IN SEPTEMBER 2018 ROSE BY

9.80%

**YEAR-ON-YEAR
(FROM 10.0% IN AUGUST 2018)**

0.64%

**MONTH-ON-MONTH
(FROM 0.78% IN AUGUST 2018)**

HIGHEST INCREASE RECORDED IN



**HOSPITAL
SERVICES**



TOBACCO



**FUELS AND LUBRICANTS
FOR PERSONAL
TRANSPORT**



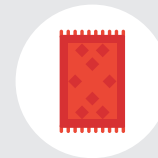
**DENTAL
SERVICES**



**FURNITURE
AND FURNISHING**



**VEHICLE
SPARE PARTS**



**CARPETS AND OTHER
FLOOR COVERINGS**

The CPI (Consumer Price Index) measures the average change over time in prices of goods and services consumed by people for day-to-day living i.e it measures the inflation rate

URBAN INDEX IN SEPTEMBER 2018 ROSE BY



11.70%

YEAR-ON-YEAR
(FROM 11.67% IN AUGUST 2018)

0.86%

MONTH-ON-MONTH
(FROM 1.00% IN AUGUST 2018)

RURAL INDEX IN SEPTEMBER 2018 ROSE BY



10.92%

YEAR-ON-YEAR
(FROM 10.84% IN AUGUST 2018)

0.82%

MONTH-ON-MONTH
(FROM 0.96% IN AUGUST 2018)

The CPI (Consumer Price Index) measures the average change over time in prices of goods and services consumed by people for day-to-day living i.e it measures the inflation rate

STATE PROFILES

ALL ITEMS INFLATION

All Times Inflation on a YoY Basis Was Highest In

KADUNA ▶ **12.93%**

EBONYI ▶ **12.86%**

BAYELSA ▶ **12.83%**

Slowest Rise in Headline Inflation

CROSS RIVER ▶ **8.42%**

PLATEAU ▶ **8.77%**

OGUN ▶ **9.22%**

MONTH ON MONTH

All Times Inflation on a MoM Basis Was Highest In

KEBBI ▶ **1.91%**

KWARA ▶ **1.89%**

TARABA ▶ **1.47%**

Slowest Rise in Headline Inflation

CROSS RIVER ▶ **-0.13%**

NASARAWA ▶ **0.20%**

PLATEAU ▶ **0.58%**

STATE PROFILES

FOOD INFLATION

Food Inflation on a YoY basis Was Highest In

KWARA ▶ **17.17%**

BAYELSA ▶ **16.16%**

ABUJA ▶ **15.70%**

Slowest Rise in Food Inflation

PLATEAU ▶ **8.82%**

ABIA ▶ **10.10%**

OGUN ▶ **11.11%**

MONTH ON MONTH

Food Inflation on a MoM Basis Was Highest In

KWARA ▶ **3.39%**

ADAMAWA ▶ **2.59%**

KEBBI ▶ **2.23%**

Slowest Rise in Food Inflation

NASARAWA ▶ **-1.01%**

PLATEAU ▶ **-1.00%**

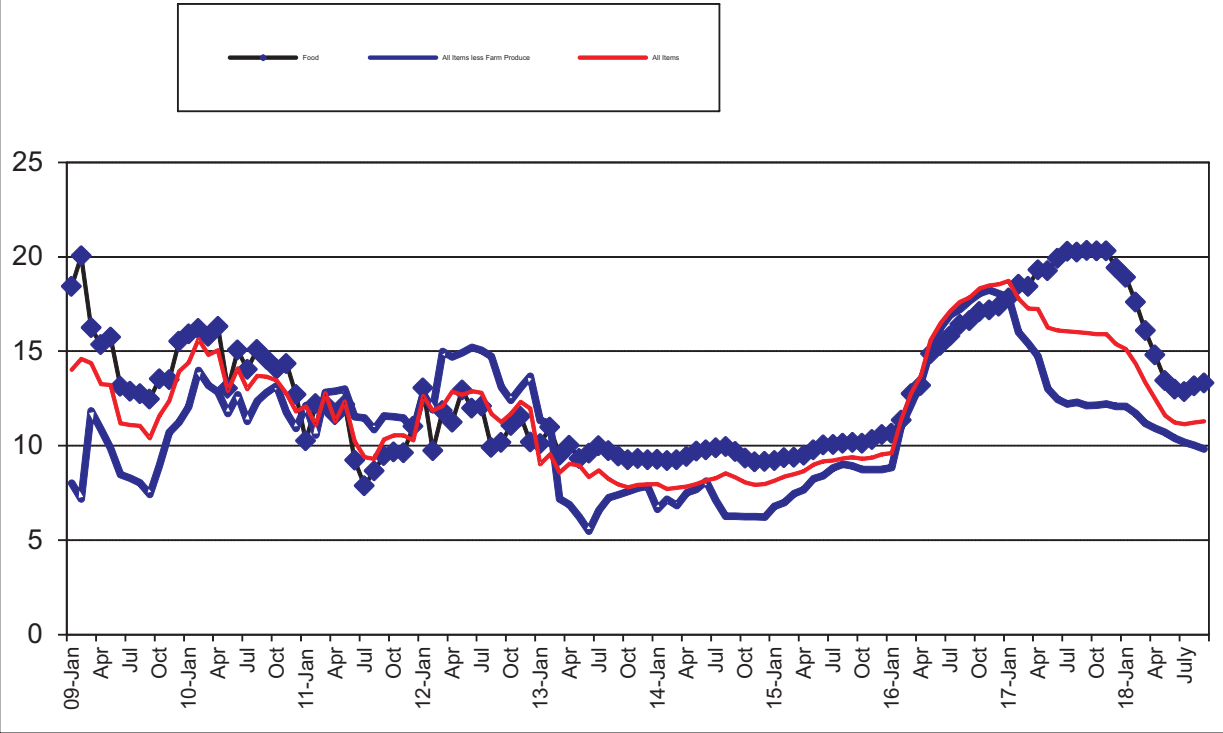
NIGER ▶ **-0.44%**

Table 1 Composite Consumer Price Index (Base November 2009 = 100)

		All Items Index				All Items less Farm Produce					Food				
		Monthly	Month-on change (%)	Year-on change (%)	12-Month average change (%)	Monthly	Month-on change (%)	Year-on change (%)	12-Month average change (%)	Monthly	12-Month Average	Month-on change (%)	Year-on change (%)	12-Month average change (%)	
Weights		1000.00				513.10				507.06					
2009	Jan	90.2	0.5	14.0	12.0	91.1	-0.1	8.0	5.5	89.5	84.6	0.9	18.4	16.5	09-Jan
	Feb	90.8	0.7	14.6	12.6	91.7	0.6	7.2	5.6	90.2	85.9	0.8	20.0	17.5	Feb
	Mar	91.4	0.6	14.4	13.1	92.0	0.3	11.8	6.5	90.9	86.9	0.8	16.2	17.7	Mar
	Apr	91.9	0.6	13.3	13.5	92.5	0.6	10.9	7.3	91.6	87.9	0.7	15.3	17.9	Apr
	May	93.6	1.8	13.2	13.8	94.2	1.8	9.9	7.8	93.5	89.0	2.0	15.7	17.9	May
	June	95.3	1.8	11.2	13.7	95.3	1.2	8.5	8.3	95.6	89.9	2.2	13.1	17.5	June
	July	97.3	2.1	11.1	13.4	96.8	1.5	8.3	8.6	97.9	90.8	2.4	12.9	16.8	Jul
	Aug	98.4	1.1	11.0	13.3	97.3	0.5	8.0	8.9	98.9	91.8	1.1	12.7	16.3	Aug
	Sep	98.9	0.5	10.4	13.1	98.1	0.8	7.4	8.9	99.5	92.7	0.6	12.5	15.9	Sep
	Oct	99.4	0.5	11.6	12.8	98.9	0.8	8.9	9.0	99.9	93.7	0.4	13.5	15.4	Oct
	Nov	100.0	0.7	12.4	12.6	100.0	1.1	10.7	9.1	100.0	94.7	0.1	13.5	15.0	Nov
	Dec	102.2	2.2	13.9	12.5	101.5	1.5	11.2	9.2	102.4	95.8	2.4	15.5	14.8	Dec
2010	Jan	103.1	1.0	14.4	12.6	102.1	0.6	12.1	9.6	103.7	97.0	1.3	15.9	14.7	10-Jan
	Feb	105.0	1.9	15.6	12.7	104.5	2.3	14.0	10.1	104.8	98.2	1.1	16.2	14.4	Feb
	Mar	104.9	-0.1	14.8	12.8	104.1	-0.4	13.2	10.3	105.3	99.4	0.4	15.8	14.4	Mar
	Apr	105.7	0.8	15.0	12.9	104.4	0.3	12.8	10.4	106.6	100.7	1.2	16.3	14.5	Apr
	May	105.7	-0.04	12.9	12.9	105.2	0.8	11.7	10.6	105.7	101.7	-0.8	13.0	14.3	May
	Jun	108.8	2.91	14.1	13.1	107.4	2.1	12.7	10.9	110.0	102.9	4.1	15.1	14.4	Jun
	Jul	109.9	1.08	13.0	13.3	107.7	0.3	11.3	11.2	111.6	104.0	1.5	14.0	14.5	Jul
	Aug	111.9	1.76	13.7	13.5	109.3	1.5	12.4	11.5	113.8	105.3	2.0	15.1	14.7	Aug
	Sep	112.4	0.46	13.6	13.8	110.7	1.3	12.8	12.0	114.0	106.5	0.1	14.6	14.9	Sep
	Oct	112.7	0.30	13.4	13.9	111.9	1.1	13.2	12.3	114.0	107.7	-0.0	14.1	14.9	Oct
	Nov	112.8	0.04	12.8	13.9	111.7	-0.1	11.7	12.4	114.4	108.9	0.3	14.4	15.0	Nov
	Dec	114.2	1.29	11.8	13.7	112.6	0.7	10.9	12.4	115.4	109.9	0.9	12.7	14.7	Dec
2011	Jan	115.6	1.20	12.1	13.5	114.5	1.7	12.1	12.4	114.3	110.8	-0.9	10.3	14.2	11-Jan
	Feb	116.7	0.96	11.1	13.2	115.5	0.9	10.6	12.1	117.7	111.9	2.9	12.2	13.9	Feb
	Mar	118.3	1.37	12.8	13.0	117.5	1.7	12.8	12.1	118.1	113.0	0.4	12.2	13.6	Mar
	Apr	117.7	-0.54	11.3	12.7	117.9	0.3	12.9	12.1	119.0	114.0	0.7	11.6	13.2	Apr
	May	118.7	0.91	12.4	12.6	118.9	0.9	13.0	12.2	118.5	115.1	-0.3	12.2	13.2	May
	Jun	119.9	0.97	10.2	12.3	119.8	0.7	11.5	12.1	120.1	115.9	1.3	9.2	12.7	Jun
	Jul	120.3	0.32	9.4	12.0	120.1	0.2	11.5	12.1	120.4	116.6	0.2	7.9	12.1	Jul
	Aug	122.3	1.67	9.3	11.6	121.2	0.9	10.9	12.0	123.7	117.5	2.7	8.7	11.6	Aug
	Sep	124.0	1.41	10.3	11.4	123.5	1.9	11.6	11.9	124.8	118.4	0.9	9.5	11.2	Sep
	Oct	124.6	0.49	10.5	11.1	124.8	1.1	11.5	11.7	125.0	119.3	0.2	9.7	10.8	Oct
	Nov	124.7	0.04	10.5	11.0	124.6	-0.2	11.5	11.7	125.4	120.2	0.3	9.6	10.4	Nov
	Dec	126.0	1.06	10.3	10.8	124.8	0.2	10.8	11.7	128.1	121.3	2.2	11.0	10.3	Dec
2012	Jan	130.2	3.35	12.6	10.9	129.1	3.5	12.7	11.8	129.3	122.5	0.9	13.1	10.5	12-Jan
	Feb	130.5	0.28	11.9	11.0	129.3	0.1	11.9	11.9	129.1	123.5	-0.1	9.7	10.3	12-Feb
	Mar	132.6	1.59	12.1	10.9	135.1	4.5	15.0	12.1	132.1	124.6	2.3	11.8	10.3	12-Mar
	Apr	132.8	0.13	12.9	11.1	135.2	0.1	14.7	12.2	132.3	125.7	0.2	11.2	10.3	Apr
	May	133.8	0.75	12.7	11.1	136.7	1.1	14.9	12.4	133.9	127.0	1.2	12.9	10.4	May
	Jun	135.3	1.15	12.9	11.3	138.0	1.0	15.2	12.7	134.5	128.2	0.5	12.0	10.6	Jun
	Jul	135.7	0.24	12.8	11.6	138.1	0.1	15.0	13.0	135.0	129.4	0.3	12.1	11.0	Jul
	Aug	136.6	0.67	11.7	11.8	139.0	0.6	14.7	13.3	135.9	130.4	0.7	9.9	11.1	Aug
	Sep	138.0	1.01	11.3	11.9	139.7	0.5	13.1	13.5	137.5	131.5	1.1	10.2	11.1	Sep
	Oct	139.2	0.88	11.7	11.9	140.3	0.4	12.4	13.5	138.8	132.7	1.0	11.1	11.2	Oct
	Nov	140.0	0.60	12.3	12.1	140.9	0.4	13.1	13.6	139.8	133.9	0.7	11.6	11.4	Nov
	Dec	141.1	0.75	12.0	12.2	141.8	0.7	13.7	13.9	141.2	135.0	1.0	10.2	11.3	Dec
2013	Jan	141.9	0.62	9.0	11.9	143.8	1.4	11.3	13.7	142.3	136.0	0.8	10.1	11.1	13-Jan
	Feb	143.0	0.75	9.5	11.7	143.8	0.0	11.2	13.7	143.3	137.2	0.7	11.0	11.2	Feb
	Mar	144.0	0.71	8.6	11.4	144.8	0.7	7.2	13.0	144.6	138.3	1.0	9.5	11.0	Mar
	Apr	144.8	0.55	9.1	11.1	144.5	-0.2	6.9	12.3	145.6	139.4	0.6	10.0	10.8	Apr
	May	145.8	0.67	9.0	10.8	145.2	0.5	6.2	11.5	146.4	140.4	0.5	9.3	10.5	May
	Jun	146.6	0.59	8.4	10.4	145.5	0.3	5.5	10.7	147.5	141.5	0.7	9.6	10.4	Jun
	Jul	147.4	0.54	8.7	10.0	147.2	1.2	6.6	10.0	148.4	142.6	0.7	10.0	10.2	Jul
	Aug	147.8	0.25	8.2	9.8	149.1	1.3	7.2	9.4	149.2	143.7	0.5	9.7	10.2	Aug
	Sep	148.9	0.75	8.0	9.5	150.0	0.6	7.4	8.9	150.4	144.8	0.9	9.4	10.1	Sep
	Oct	150.0	0.75	7.8	9.2	150.9	0.6	7.6	8.6	151.6	145.9	0.8	9.2	10.0	Oct
	Nov	151.1	0.72	7.9	8.8	151.8	0.6	7.8	8.1	152.9	146.9	0.8	9.31	9.8	Nov
	Dec	152.3	0.78	8.0	8.5	153.0	0.8	7.9	7.7	154.3	148.0	0.9	9.25	9.7	Dec

2014	Jan	153.3	0.64	8.0	8.4	153.3	0.2	6.6	7.3	155.5	149.1	0.8	9.27	9.6	14-Jan
	Feb	154.0	0.50	7.7	8.3	154.1	0.5	7.2	7.0	156.5	150.2	0.6	9.2	9.5	Feb
	Mar	155.2	0.78	7.8	8.2	154.7	0.4	6.8	7.0	158.0	151.3	1.0	9.3	9.5	Mar
	Apr	156.2	0.62	7.9	8.1	155.3	0.4	7.5	7.0	159.3	152.5	0.8	9.4	9.4	Apr
	May	157.4	0.78	8.0	8.0	156.3	0.6	7.7	7.2	160.6	153.7	0.8	9.7	9.4	May
	Jun	158.6	0.77	8.2	8.0	157.4	0.7	8.1	7.4	161.9	154.9	0.8	9.8	9.5	Jun
	Jul	159.7	0.65	8.3	8.0	157.7	0.2	7.1	7.4	163.1	156.1	0.8	9.9	9.5	Jul
	Aug	160.4	0.5	8.5	8.0	158.4	0.4	6.3	7.33	164.0	157.3	0.6	9.96	9.48	Aug
	Sep	161.3	0.6	8.3	8.0	159.4	0.6	6.3	7.23	165.0	158.5	0.6	9.68	9.50	Sep
	Oct	162.1	0.5	8.1	8.0	160.3	0.6	6.3	7.12	165.8	159.7	0.5	9.34	9.51	Oct
	Nov	163.1	0.6	7.9	8.0	161.3	0.6	6.3	6.99	166.8	160.9	0.6	9.14	9.49	Nov
	Dec	164.4	0.8	8.0	8.0	162.5	0.8	6.2	6.85	168.4	162.1	0.9	9.15	9.48	Dec
2015	Jan	165.8	0.8	8.2	8.1	163.7	0.7	6.8	6.86	169.8	163.3	0.9	9.21	9.47	15-Jan
	Feb	166.9	0.7	8.4	8.1	164.8	0.7	7.0	6.85	171.1	164.5	0.7	9.36	9.49	Feb
	Mar	168.4	0.9	8.5	8.2	166.2	0.8	7.5	6.91	172.8	165.7	1.0	9.38	9.49	Mar
	Apr	169.7	0.8	8.7	8.2	167.2	0.6	7.7	6.92	174.4	167.0	0.9	9.49	9.50	Apr
	May	171.6	1.1	9.0	8.3	169.2	1.2	8.3	6.97	176.3	168.3	1.1	9.78	9.51	May
	Jun	173.2	0.9	9.2	8.4	170.6	0.8	8.4	7.01	178.1	169.6	1.1	10.04	9.53	Jun
	Jul	174.4	0.7	9.2	8.5	171.6	0.6	8.8	7.15	179.5	171.0	0.8	10.05	9.55	Jul
	Aug	175.4	0.6	9.3	8.6	172.7	0.6	9.0	7.38	180.6	172.4	0.6	10.13	9.57	Aug
	Sep	176.5	0.6	9.4	8.7	173.7	0.6	8.9	7.61	181.8	173.8	0.6	10.17	9.61	Sep
	Oct	177.2	0.4	9.3	8.8	174.4	0.4	8.7	7.81	182.6	175.2	0.5	10.13	9.68	Oct
	Nov	178.4	0.7	9.37	8.9	175.3	0.6	8.7	8.02	184.1	176.6	0.8	10.32	9.78	Nov
	Dec	180.1	1.0	9.55	9.0	176.7	0.8	8.7	8.22	186.2	178.1	1.2	10.59	9.90	Dec
2016	Jan	181.7	0.9	9.62	9.1	178.2	0.8	8.8	8.39	187.9	179.6	0.9	10.64	10.02	16-Jan
	Feb	185.9	2.3	11.38	9.4	183.0	2.7	11.0	8.73	190.5	181.2	1.4	11.35	10.18	Feb
	Mar	189.9	2.2	12.77	9.8	186.4	1.9	12.2	9.13	194.9	183.1	2.3	12.74	10.47	Mar
	Apr	193.0	1.6	13.72	10.2	189.5	1.7	13.4	9.61	197.4	185.0	1.3	13.19	10.79	Apr
	May	198.3	2.8	15.58	10.7	194.7	2.7	15.1	10.20	202.5	187.2	2.6	14.86	11.22	May
	Jun	201.7	1.71	16.48	11.4	198.3	1.83	16.2	10.86	205.4	189.4	1.44	15.30	11.67	Jun
	Jul	204.2	1.25	17.13	12.0	200.7	1.22	16.9	11.55	207.9	191.8	1.21	15.80	12.16	Jul
	Aug	206.3	1.01	17.61	12.7	202.4	0.85	17.2	12.25	210.3	194.3	1.17	16.43	12.70	Aug
	Sep	208.0	0.81	17.85	13.5	204.3	0.96	17.7	12.98	212.0	196.8	0.81	16.62	13.24	Sep
	Oct	209.7	0.83	18.33	14.2	205.9	0.75	18.1	13.76	213.8	199.4	0.86	17.09	13.82	Oct
	Nov	211.3	0.78	18.48	15.0	207.3	0.71	18.2	14.54	215.7	202.0	0.88	17.19	14.39	Nov
	Dec	213.6	1.06	18.55	15.7	208.6	0.62	18.1	15.31	218.6	204.7	1.33	17.39	14.95	Dec
2017	Jan	215.7	1.01	18.72	16.4	210.0	0.68	17.9	16.04	221.4	207.5	1.29	17.82	15.54	17-Jan
	Feb	218.9	1.49	17.78	17.0	212.3	1.10	16.0	16.44	225.8	210.5	1.99	18.53	16.13	Feb
	Mar	222.7	1.72	17.26	17.3	215.1	1.32	15.4	16.68	230.8	213.5	2.21	18.44	16.60	Mar
	Apr	226.3	1.60	17.24	17.6	217.5	1.10	14.8	16.77	235.5	216.6	2.04	19.30	17.11	Apr
	May	230.5	1.88	16.25	17.63	220.0	1.17	13.0	16.57	241.5	219.9	2.54	19.27	17.48	May
	Jun	234.2	1.58	16.10	17.58	223.0	1.32	12.5	16.22	246.3	223.3	1.99	19.91	17.87	Jun
	Jul	237.0	1.21	16.05	17.47	225.2	1.00	12.2	15.80	250.0	226.8	1.52	20.28	18.25	Jul
	Aug	239.3	0.97	16.01	17.33	227.3	0.93	12.3	15.37	252.9	230.4	1.14	20.25	18.57	Aug
	Sep	241.2	0.78	15.98	17.17	229.1	0.80	12.1	14.90	255.1	233.9	0.87	20.32	18.88	Sep
	Oct	243.0	0.76	15.91	16.97	230.9	0.76	12.1	14.41	257.2	237.6	0.85	20.31	19.14	Oct
	Nov	244.9	0.78	15.90	16.76	232.6	0.77	12.2	13.93	259.5	241.2	0.88	20.31	19.39	Nov
	Dec	246.4	0.59	15.37	16.50	233.8	0.51	12.1	13.46	261.0	244.8	0.58	19.42	19.55	Dec
2018	Jan	248.4	0.80	15.13	16.22	235.4	0.68	12.1	13.01	263.3	248.2	0.87	18.92	19.62	18-Jan
	Feb	250.3	0.79	14.33	15.93	237.2	0.75	11.7	12.67	265.5	251.6	0.85	17.59	19.52	Feb
	Mar	252.4	0.84	13.34	15.60	239.2	0.84	11.2	12.33	267.9	254.6	0.90	16.08	19.29	Mar
	Apr	254.5	0.83	12.48	15.20	241.3	0.87	10.9	12.02	270.4	257.5	0.91	14.80	18.89	Apr
	May	257.3	1.09	11.61	14.79	243.6	0.98	10.7	11.83	273.9	260.3	1.33	13.45	18.36	May
	June	260.5	1.24	11.23	14.37	246.1	1.03	10.4	11.65	278.2	262.9	1.57	12.98	17.75	June
	July	263.4	1.13	11.14	13.95	248.1	0.81	10.2	11.48	282.2	265.6	1.40	12.85	17.10	July
	August	266.2	1.05	11.23	13.55	250.1	0.78	10.0	11.28	286.2	268.4	1.42	13.16	16.50	August
	September	268.4	0.84	11.28	13.16	251.7	0.64	9.8	11.09	289.0	271.2	1.00	13.31	15.92	September

1. Inflation: Composite Year-on Change (%)



2. Inflation: Composite 12-Month Average Change (%)

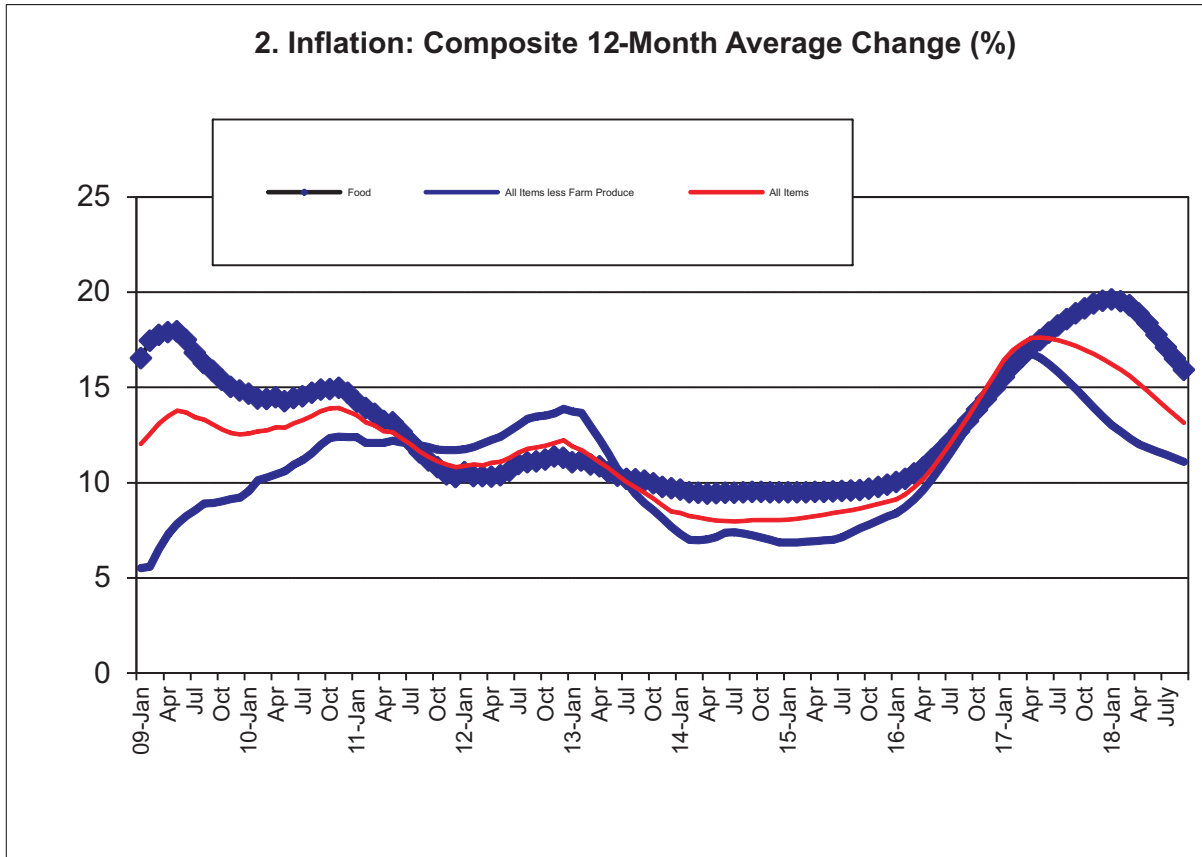


Table 2 Composite Consumer Price Index (Base November 2009 = 100)

		All Items	All Items less Farm Produce	All Items less Farm Produce and Energy	Imported Food	Food	Food & Non-Alcoholic Beverages	Alcoholic Beverage, Tobacco and Kola	Clothing and Footwear	Housing, Water, Electricity, Gas and Other Fuel	Furnishings & Household Equipment Maintenance	Health	Transport	Communication	Recreation & Culture	Education	Restaurant & Hotels	Miscellaneous Goods & Services	Month-on (%)	Year-on (%)	12-month average (%)		
Weights		1000.00	513.10	405.55	132.88	507.06	518.00	10.87	76.50	167.34	50.30	30.04	65.08	6.80	6.87	39.44	12.12	16.63					
2009	Jan	90.2	91.1	92.6		89.5	89.5	97.6	97.0	92.3	87.3	97.1	91.2	97.1	93.7	88.3	99.4	93.9	0.5	14.0	12.0	Jan-09	
	Feb	90.8	91.7	92.6		90.2	90.2	98.5	97.0	92.6	87.4	98.6	90.2	97.1	92.8	88.1	100.4	94.1	0.7	14.6	12.6	Feb	
	Mar	91.4	92.0	93.1		90.9	91.0	98.5	97.1	92.6	87.9	99.0	91.0	97.1	92.7	89.9	100.2	94.9	0.6	14.4	13.1	Mar	
	Apr	91.9	92.5	94.1		91.6	91.7	99.1	97.5	92.9	89.6	101.1	94.4	97.1	93.4	89.3	101.3	95.4	0.6	13.3	13.5	Apr	
	May	93.6	94.2	95.4		93.5	93.5	99.5	96.7	94.3	88.8	99.2	96.0	97.1	94.6	92.3	100.2	94.5	1.8	13.2	13.8	May	
	June	95.3	95.3	96.6		95.6	95.6	99.7	97.1	96.3	89.6	100.1	94.0	97.1	95.0	92.6	101.1	97.8	1.8	11.2	13.7	June	
	July	97.3	96.8	98.4		97.9	97.8	101.4	97.9	98.3	99.3	101.7	92.5	99.4	96.8	93.9	98.9	98.8	2.1	11.1	13.4	July	
	Aug	98.4	97.3	97.7		98.9	98.9	100.2	99.1	98.4	100.2	101.8	93.1	101.5	98.1	99.4	101.2	100.0	1.1	11.0	13.3	Aug	
	Sep	98.9	98.1	98.5		99.5	99.5	99.3	99.1	98.7	98.7	101.6	94.9	101.2	97.6	99.6	99.9	100.1	0.5	10.4	13.1	Sept	
	Oct	99.4	98.9	99.1		99.9	99.9	99.7	99.6	99.5	99.1	102.3	96.0	100.4	97.5	97.7	99.0	99.7	0.5	11.6	12.8	Oct	
	Nov	100.0	100.0	100.0	100.0	100.0	100.0	100.0	100.0	100.0	100.0	100.0	100.0	100.0	100.0	100.0	100.0	100.0	100.0	0.7	12.4	12.6	Nov
	Dec	102.2	101.5	101.9	101.5	102.4	102.7	101.9	101.5	100.2	101.7	101.8	101.8	100.0	101.9	101.5	102.6	101.7	2.2	13.9	12.5	Dec	
2010	Jan	103.1	102.1	102.6	101.7	103.7	103.9	102.3	102.4	100.6	103.0	103.0	103.0	99.6	103.0	103.1	106.7	103.3	1.0	14.4	12.6	Jan-10	
	Feb	105.0	104.5	105.0	103.2	104.8	105.4	102.6	103.4	102.3	104.7	104.9	104.7	100.3	99.4	106.0	106.3	105.9	1.9	15.6	12.7	Feb	
	Mar	104.9	104.1	104.6	103.0	105.3	105.3	104.3	104.5	102.2	105.7	105.3	104.8	100.6	103.3	105.5	105.6	104.4	-0.1	14.8	12.8	Mar	
	Apr	105.7	104.4	105.1	103.9	106.6	106.7	104.8	105.1	102.2	103.8	104.9	106.8	100.4	103.1	105.6	109.7	106.2	0.8	15.0	12.9	Apr	
	May	105.7	105.2	106.5	104.9	105.7	106.2	103.8	105.9	102.1	102.6	104.8	106.3	100.2	103.3	108.6	110.1	107.2	-0.04	12.9	12.9	May	
	Jun	108.8	107.4	108.6	109.6	110.0	110.2	108.5	109.1	104.8	110.7	108.5	107.4	102.1	102.6	106.6	106.9	109.6	2.91	14.1	13.1	June	
	Jul	109.9	107.7	108.8	109.3	111.6	112.0	109.6	110.3	105.1	109.0	110.3	107.5	102.6	103.0	105.7	105.0	110.7	1.08	13.0	13.3	July	
	Aug	111.9	109.3	110.4	109.3	113.8	114.1	112.3	112.8	106.2	110.3	112.3	108.6	100.6	105.0	106.0	107.3	111.2	1.76	13.7	13.5	Aug	
	Sep	112.4	110.7	111.7	113.6	114.0	113.5	109.0	112.4	109.9	112.1	112.0	112.2	101.8	108.4	108.4	107.1	111.7	0.46	13.6	13.8	Sept	
	Oct	112.7	111.9	112.0	114.1	114.0	114.1	111.7	112.8	111.0	113.2	114.8	107.1	102.9	109.6	110.1	108.5	110.6	0.30	13.4	13.9	Oct	
	Nov	112.8	111.7	111.3	115.1	114.4	114.3	112.2	112.0	112.6	113.1	111.1	111.7	102.0	107.8	107.7	108.2	112.8	0.04	12.8	13.9	Nov	
	Dec	114.2	112.6	112.5	115.4	115.4	115.5	111.9	113.7	113.2	113.2	112.7	112.9	102.4	107.8	109.1	109.6	112.1	1.29	11.8	13.7	Dec	
2011	Jan	115.6	114.5	113.0	96.0	114.3	118.7	110.6	114.4	113.9	113.5	111.3	109.2	103.6	108.3	110.2	110.5	113.2	1.2	12.1	13.5	Jan-11	
	Feb	116.7	115.5	115.5	124.0	117.7	117.9	113.4	116.0	114.7	115.6	114.7	117.2	104.9	106.3	110.6	112.3	114.2	0.96	11.1	13.2	Feb	
	Mar	118.3	117.5	117.5	119.4	118.1	118.2	112.7	116.5	116.0	115.9	117.5	115.5	105.1	107.4	111.0	112.2	112.8	1.37	12.8	13.0	Mar	
	Apr	117.7	117.9	117.9	119.1	119.0	118.0	114.5	116.2	121.0	115.4	117.2	114.8	105.1	107.1	111.4	113.3	114.7	-0.54	11.3	12.7	Apr	
	May	118.7	118.9	119.0	120.6	118.5	118.5	115.1	118.2	121.2	116.6	116.6	115.7	105.7	107.4	111.9	113.8	115.6	0.91	12.4	12.6	May	
	Jun	119.9	119.8	119.8	111.9	120.1	119.5	114.2	118.0	121.6	116.3	119.9	118.5	105.6	107.9	112.2	114.3	117.9	0.97	10.2	12.3	Jun	
	Jul	120.3	120.1	119.9	112.6	120.4	120.2	112.4	117.7	122.5	117.6	118.3	120.7	106.2	111.1	112.6	115.0	119.8	0.32	9.4	12.0	Jul	
	Aug	122.3	121.2	121.1	116.0	123.7	123.4	116.4	118.7	124.5	120.0	120.4	121.9	106.4	109.5	112.9	115.1	121.5	1.67	9.3	11.6	Aug	
	Sep	124.0	123.5	122.7	117.6	124.8	124.2	116.2	119.9	126.1	119.2	122.3	122.3	106.2	109.8	113.8	115.7	121.6	1.41	10.3	11.4	Sept	
	Oct	124.6	124.8	124.0	117.0	125.0	124.3	117.6	120.6	128.5	119.5	121.8	122.2	106.6	117.0	114.0	116.6	122.0	0.49	10.5	11.1	Oct	
	Nov	124.7	124.6	123.5	124.2	125.4	125.1	118.9	121.9	128.1	120.2	122.7	123.3	107.1	115.7	114.2	116.9	125.5	0.04	10.5	11.0	Nov	
	Dec	126.0	124.8	123.6	125.3	128.1	127.8	119.0	122.3	131.9	119.9	122.8	128.7	106.5	113.3	114.6	118.9	122.7	1.06	10.3	10.8	Dec	
2012	Jan	130.2	129.1	129.2	121.6	129.3	130.8	123.2	121.1	131.8	120.6	122.7	127.8	108.7	114.5	115.0	120.0	125.9	3.3	12.6	10.9	Jan-12	
	Feb	130.5	129.3	129.4	121.6	129.1	129.1	123.2	121.1	131.8	120.6	122.7	127.9	108.7	114.5	115.1	120.0	125.9	0.28	11.9	11.0	Feb	
	Mar	132.6	135.1	134.5	129.9	132.1	131.9	120.6	133.7	139.7	130.2	129.7	134.4	113.4	116.7	125.6	121.4	131.6	1.59	12.1	10.9	Mar	
	Apr	132.8	135.2	134.7	131.3	132.3	132.1	121.3	134.1	139.5	130.7	130.1	134.6	114.0	117.6	125.0	121.9	132.0	0.13	12.9	11.1	Apr	
	May	133.8	136.7	136.3	132.5	133.9	133.7	122.0	134.7	139.7	131.1	130.8	135.1	114.4	118.4	125.5	122.6	132.6	0.75	12.7	11.1	May	
	Jun	135.3	138.0	136.2	132.6	134.5	134.3	122.5	134.8	146.5	131.3	131.1	135.5	114.8	118.5	125.7	123.1	132.9	1.15	12.9	11.3	Jun	
	Jul	135.7	138.1	136.5	132.9	135.0	134.7	122.8	134.9	146.7	131.3	131.3	135.8	114.9	118.9	125.9	123.4	133.1	0.24	12.8	11.6	Jul	
	Aug	136.6	139.0	137.1	134.2	135.9	135.7	123.3	135.6	147.8	132.0	132.0	136.6	115.2	119.4	126.4	124.4	133.7	0.67	11.7	11.8	Aug	
	Sep	138.0	139.7	137.7	134.2	137.5	137.2	123.8	136.5	150.1	132.9	132.4	137.3	115.6	120.6	126.7	125.0	134.4	1.01	11.3	11.9	Sept	
	Oct	139.2	140.3	138.1	135.3	138.8	138.6	124.5	137.5	151.5	133.5	133.1	138.5	116.0	121.4	128.1	125.4	135.3	0.88	11.7	11.9	Oct	
	Nov	140.0	140.9	138.7	136.2	139.8	139.6	125.3	138.2	152.3	134.1	133.5	138.9	116.2	121.8	128.8	125.7	135.6	0.60	12.3	12.1	Nov	
	Dec	141.1	141.8	139.6	137.6	141.2	140.9	126.1	139.1	153.2	134.4	133.9	140.2	116.3	122.1	129.1	126.1	136.0	0.75	12.0	12.2	Dec	
2013	Jan	141.9	143.8	140.3	138.7	142.3	142.0	127.1	140.1	153.8	135.4	134.3	140.6	116.4	122.2	129.3	126.4	136.3	0.62	9.0	11.9	Jan-13	
	Feb	143.0	143.8	140.5	139.1	143.3	143.0	128.1	141.3	155.2	136.4	135.5	141.9	116.9	123.3	130.2	127.5	137.4	0.75	9.5	11.7	Feb	
	Mar	144.0	144.8	142.9	139.3																		

2014	Jan	153.3	153.3	150.7	148.4	155.5	155.2	135.5	150.7	162.7	145.0	144.3	150.4	121.3	131.0	138.3	134.9	146.5	0.6	8.0	8.4	Jan-14
	Feb	154.0	154.1	151.8	149.1	156.5	156.1	136.0	151.4	163.3	145.5	145.0	151.0	121.6	132.0	138.7	135.3	146.9	0.5	7.7	8.3	Feb
	Mar	155.2	154.7	152.5	150.3	158.0	157.6	136.7	151.9	164.2	146.5	145.9	152.0	122.1	132.8	139.4	136.1	147.7	0.8	7.8	8.2	Mar
	Apr	156.2	155.3	153.1	151.1	159.3	158.9	137.5	152.7	164.9	147.0	146.3	152.6	122.6	133.5	139.9	136.9	148.4	0.6	7.9	8.1	Apr
	May	157.4	156.3	154.0	152.4	160.6	160.2	138.3	154.1	166.0	148.2	147.4	153.8	123.1	134.5	140.9	138.1	149.6	0.8	8.0	8.0	May
	Jun	158.6	157.4	155.0	153.4	161.9	161.5	139.3	155.3	167.3	149.3	148.4	154.8	123.7	135.3	141.3	139.2	150.7	0.8	8.2	8.0	Jun
	Jul	159.7	157.7	155.4	154.0	163.1	162.7	140.2	156.2	168.3	150.3	149.1	155.4	124.1	136.5	141.8	139.9	151.3	0.6	8.3	8.0	Jul
	Aug	160.4	158.4	156.0	154.9	164.0	163.6	141.0	156.8	168.7	151.1	149.9	156.3	124.2	137.4	142.6	140.5	152.0	0.5	8.5	8.0	Aug
	Sep	161.3	159.4	157.1	156.0	165.0	164.6	141.8	157.6	169.4	152.2	150.6	156.9	124.6	137.9	143.9	141.3	152.9	0.6	8.3	8.0	Sep
	Oct	162.1	160.3	158.0	157.0	165.8	165.4	142.6	158.6	170.1	153.1	151.4	157.7	124.9	138.4	145.0	142.4	153.9	0.5	8.1	8.0	Oct
	Nov	163.1	161.3	158.9	158.0	166.8	166.4	143.4	159.8	170.8	154.2	152.4	158.4	125.3	138.9	146.0	143.3	154.9	0.6	7.9	8.0	Nov
	Dec	164.4	162.5	160.2	159.5	168.4	167.9	144.7	161.3	171.8	155.5	153.5	159.7	125.5	139.6	147.0	144.6	156.2	0.8	8.0	8.0	Dec
2015	Jan	165.8	163.7	161.4	160.8	169.8	169.4	145.7	162.7	172.9	156.9	154.7	160.8	125.6	140.6	148.1	145.8	157.4	0.8	8.2	8.1	Jan-15
	Feb	166.9	164.8	162.5	162.3	171.1	170.6	146.7	163.8	173.9	158.0	155.9	161.7	126.1	141.3	149.0	146.9	158.4	0.7	8.4	8.1	Feb
	Mar	168.4	166.2	163.9	163.6	172.8	172.4	147.9	165.2	175.1	159.5	157.4	163.1	126.3	142.0	150.3	148.0	159.9	0.9	8.5	8.2	Mar
	Apr	169.7	167.2	164.9	165.0	174.4	173.9	148.9	166.1	176.2	160.3	158.3	164.5	126.5	142.6	151.0	148.9	160.8	0.8	8.7	8.2	Apr
	May	171.6	169.2	166.7	166.9	176.3	175.8	150.5	168.1	178.2	161.9	160.2	166.5	126.9	143.7	152.7	150.4	162.6	1.1	9.0	8.3	May
	Jun	173.2	170.6	167.9	168.5	178.1	177.6	151.7	169.5	179.5	162.9	161.0	168.3	127.3	145.0	154.0	151.8	164.3	0.9	9.2	8.4	Jun
	Jul	174.4	171.6	168.9	170.0	179.5	179.0	152.8	170.7	180.6	163.6	162.0	169.6	127.6	146.0	154.9	152.6	165.3	0.7	9.2	8.5	Jul
	Aug	175.4	172.7	169.8	171.4	180.6	180.1	153.5	171.6	181.6	164.4	162.8	170.2	127.9	146.3	156.4	153.4	166.3	0.6	9.3	8.6	Aug
	Sep	176.5	173.7	170.8	172.8	181.8	181.3	154.6	172.6	182.6	165.4	163.7	171.2	128.1	146.9	157.8	154.3	166.9	0.6	9.4	8.7	Sep
	Oct	177.2	174.4	171.5	173.7	182.6	182.1	155.3	173.5	183.0	165.7	164.1	172.1	128.4	147.5	159.0	154.8	167.5	0.4	9.3	8.8	Oct
	Nov	178.4	175.3	172.4	175.1	184.1	183.5	156.2	174.7	183.7	166.2	164.6	174.0	128.7	148.2	159.9	155.4	168.4	0.7	9.4	8.9	Nov
	Dec	180.1	176.7	173.8	177.1	186.2	185.6	157.8	177.1	184.6	167.2	165.8	176.1	129.3	149.4	160.8	157.2	170.3	1.0	9.55	9.0	Dec
2016	Jan	181.7	178.2	175.2	178.9	187.9	187.3	159.3	178.6	185.7	168.1	167.2	177.9	129.8	150.4	162.9	158.9	171.9	0.9	9.62	9.1	Jan-16
	Feb	185.9	183.0	177.9	183.7	190.5	189.9	161.4	181.1	198.1	170.6	169.3	180.4	130.7	151.7	167.1	160.0	173.5	2.3	11.38	9.4	Feb
	Mar	189.9	186.4	180.8	188.4	194.9	194.2	164.1	185.1	203.0	174.0	171.4	184.5	131.6	153.4	169.7	160.9	176.3	2.2	12.77	9.8	Mar
	Apr	193.0	189.5	182.7	192.0	197.4	196.7	165.5	187.3	209.7	175.7	172.6	187.5	132.3	155.0	172.0	161.6	177.8	1.6	13.72	10.2	Apr
	May	198.3	194.7	187.3	197.9	202.5	201.7	169.7	191.7	217.4	180.3	176.4	192.5	133.2	158.4	176.8	165.3	183.3	2.8	15.58	10.7	May
	Jun	201.7	198.3	190.3	202.3	205.4	204.6	172.8	195.8	223.0	183.1	178.7	196.7	134.0	159.2	179.2	166.9	185.0	1.7	16.48	11.4	Jun
	Jul	204.2	200.7	192.0	204.7	207.9	207.1	174.7	198.1	226.9	183.8	179.8	199.3	134.5	160.1	182.3	168.0	186.4	1.3	17.13	12.0	Jul
	Aug	206.3	204.4	193.4	206.8	210.3	209.5	176.2	200.2	228.8	184.9	180.6	200.8	134.9	160.9	185.3	168.3	187.2	1.0	17.61	12.7	Aug
	Sep	208.0	202.3	195.0	208.7	212.0	211.1	177.6	202.3	230.6	186.0	181.5	202.1	135.3	161.8	188.4	168.8	188.1	0.8	17.85	13.5	Sep
	Oct	209.7	205.9	196.5	210.5	213.8	212.9	178.9	204.4	232.3	187.3	182.5	203.4	135.7	162.6	191.3	169.3	189.1	0.8	18.33	14.2	Oct
	Nov	211.3	207.3	198.1	212.3	215.7	214.8	180.0	206.5	233.7	188.6	183.4	204.7	136.0	163.5	193.4	169.8	190.1	0.8	18.48	15.0	Nov
	Dec	213.6	208.6	199.3	214.4	218.6	217.6	181.2	208.6	234.9	190.0	184.5	206.5	136.2	164.5	195.5	171.2	191.9	1.1	18.55	15.7	Dec
2017	Jan	215.7	210.0	200.6	216.4	221.4	220.4	182.2	210.5	236.2	191.5	185.6	208.5	136.4	165.4	197.2	172.2	193.2	1.0	18.72	16.4	Jan-17
	Feb	218.9	212.3	202.8	219.4	225.8	224.8	183.4	212.7	238.6	193.3	187.1	210.6	136.8	166.8	199.1	173.1	194.1	1.5	17.78	17.0	Feb
	Mar	222.7	215.1	205.4	222.6	230.8	229.7	185.0	215.9	241.2	195.8	189.0	213.0	137.2	169.2	201.2	174.7	196.6	1.7	17.26	17.3	Mar
	Apr	226.3	217.5	207.8	224.5	235.5	234.4	186.7	219.3	243.3	198.3	191.0	215.4	137.5	171.6	203.3	176.3	199.4	1.6	17.24	17.6	Apr
	May	230.5	220.0	210.1	227.5	241.5	240.3	188.4	223.0	245.5	200.7	193.1	218.1	138.0	173.9	205.5	178.2	201.8	1.9	16.25	17.6	May
	Jun	234.2	223.0	213.2	231.0	246.3	245.1	189.9	226.6	247.3	203.7	195.6	220.8	138.4	175.1	208.0	180.3	204.1	1.6	16.10	17.6	Jun
	Jul	237.0	225.2	215.7	233.6	250.0	248.9	191.3	229.3	248.5	206.4	198.3	222.7	138.6	176.1	209.6	182.7	205.9	1.2	16.05	17.5	Jul
	Aug	239.3	227.3	218.0	236.6	252.9	251.7	192.5	232.0	249.7	208.9	200.2	224.6	138.9	177.1	211.0	184.3	207.6	1.0	16.01	17.3	Aug
	Sep	241.2	229.1	219.8	239.7	255.1	253.9	193.5	234.3	250.9	211.0	201.6	226.4	139.1	178.1	212.3	185.4	209.2	0.8	15.98	17.2	Sep
	Oct	243.0	230.9	221.5	242.8	257.2	256.0	194.6	236.3	252.1	212.8	202.9	228.2	139.4	179.1	213.9	186.6	210.7	0.8	15.91	17.0	Oct
	Nov	244.9	232.6	223.3	245.8	259.5	258.3	195.7	238.3	253.3	214.6	204.3	230.0	140.1	179.9	215.5	187.8	212.3	0.8	15.90	16.8	Nov
	Dec	246.4	233.8	224.4	248.5	261.0	259.8	196.8	239.8	254.4	216.0	205.6	232.0	140.9	180.9	216.9	189.1	213.9	0.6	15.37	16.5	Dec
2018	Jan	248.4	235.4	226.1	251.5	263.3	262.1	198.1	241.5	255.9	217.7	207.0	234.3	141.7	182.1	218.7	190.8	215.7	0.8	15.13	16.2	Jan-18
	Feb	250.3	237.2	227.8	254.7	265.5	264.3	199.7	243.4	257.5	219.4	208.6	236.4	142.6	183.3	220.3	192.3	217.5	0.8	14.33	15.9	Feb
	Mar	252.4	239.2	229.7	257.9	267.9	266.6	201.3	245.3	259.2	221.1	210.3	238.4	143.4	184.6	222.1	193.9	219.2	0.8	13.34	15.6	Mar
	Apr	254.5	241.3	231.9	260.9	270.4	269.1	202.8	247.3	260.9	222.8	212.1	240.4	144.2	186.0	223.9	195.3	221.1	0.8	12.48	15.2	Apr
	May	257.3	243.6	234.5	264.0	273.9	272.6	204.4	249.3	262.8	224.6	214.0	242.6	145.0	187.6	226.0	196.9	223.1	1.1	11.61	14.8	May
	June	260.5	246.1	237.1	267.3	278.2	276.9	206.3	251.5	264.7	226.5	216.0	244.8	145.9	189.1	228.2	198.6	225.1	1.2	11.23	14.4	June
	July	263.4	248.1	239.0	269.1	282.2	280.8	208.1	253.6	266.6	228.4	218.1	247.0	146.8	190.7	230.3	200.3	227.1	1.1	11.14	13.9	July
	August	266.2	250.1	241.1	273.8	286.2	284.7	209.8	255.7	267.8	229.9	219.5	248.5	147.6	191.8	231.7	201.6	228.4	1.0	11.23	13.5	August
	September	268.4	251.7	242.8	277.2	289.0	287.6	211.5	257.8	269.2	231.7	221.0	250.1	148.6	192.9	233.3	202.8					

Table 3 Urban Consumer Price Index (Base November 2009 = 100)

		All Items	All Item less Farm Produce	All Item less Farm Produce and Energy	Imported Food	Food	Food & Non Alcoholic Bev.	Alcoholic Beverage, Tobacco and Kola	Clothing and Footwear	Housing, Water, Electricity, Gas and Other Fuel	Furnishings & Household Equipment Maintenance	Health	Transport	Communication	Recreation & Culture	Education	Restaurant & Hotels	Miscellaneous Goods & Services	Month-on (%)	Year-on (%)	12-month average (%)	
Weights		1000.00	552.64	418.67	155.45	476.88	490.59	11.19	65.50	191.51	49.81	27.40	74.54	10.14	7.14	40.05	14.49	17.65				
2009	Jan	92.8	96.6	97.8		90.5	90.5	97.6	97.8	96.4	96.3	96.3	94.0	99.3	97.8	92.3	102.0	96.0	0.0	10.4	11.8	09-Jan
	Feb	93.6	96.3	97.6		92.0	92.0	98.6	98.2	95.5	96.2	98.1	93.0	99.3	97.8	90.9	103.2	95.2	0.8	9.8	11.6	Feb
	Mar	93.9	96.5	98.0		92.4	92.4	98.8	97.9	95.5	96.5	98.3	94.1	99.3	96.7	93.0	104.1	95.1	0.4	9.9	11.5	Mar
	Apr	94.3	97.4	98.8		92.5	92.6	99.9	98.6	96.4	98.0	99.6	95.7	99.3	97.8	89.7	104.4	95.6	0.5	8.6	11.3	Apr
	May	95.7	98.2	98.7		94.1	94.1	100.1	96.9	98.1	96.2	97.9	97.1	99.3	98.9	96.3	104.2	98.2	1.4	9.5	11.2	May
	June	97.2	98.8	99.7		96.3	96.3	100.6	97.0	98.5	97.4	99.3	96.7	99.3	99.9	96.7	106.2	98.1	1.6	9.2	11.0	June
	July	98.9	99.5	100.3		98.4	98.4	102.1	99.9	100.2	98.8	100.9	95.7	100.8	100.1	97.6	100.1	98.5	1.7	9.3	10.7	July
	Aug	99.6	99.7	99.4		99.3	99.3	100.7	99.9	100.6	99.7	100.3	95.1	102.1	101.2	97.4	105.2	99.9	0.7	8.4	10.4	Aug
	Sep	99.8	99.5	99.2		99.8	99.8	99.8	99.7	100.3	101.1	98.8	96.0	101.5	100.5	99.5	99.7	100.8	0.2	8.1	10.0	Sept
	Oct	99.8	99.9	99.3		99.6	99.6	99.8	100.3	100.8	100.9	99.9	96.8	100.9	100.1	98.9	98.0	100.7	0.0	8.3	9.5	Oct
	Nov	100.0	100.0	100.0	100.0	100.0	100.0	100.0	100.0	100.0	100.0	100.0	100.0	100.0	100.0	100.0	100.0	100.0	0.2	8.8	9.3	Nov
	Dec	101.4	101.3	101.8	100.5	101.6	101.7	99.9	100.9	101.4	100.8	101.6	102.0	99.2	104.2	100.7	103.2	101.6	1.4	9.3	9.1	Dec
2010	Jan	102.6	102.5	102.7	101.1	102.8	102.8	100.7	103.1	102.6	101.9	102.4	103.5	99.7	105.8	102.5	108.3	102.8	1.2	10.5	9.1	10-Jan
	Feb	104.4	105.4	105.4	103.1	102.9	103.6	101.6	103.6	104.4	103.6	105.4	103.9	100.1	99.4	108.0	106.7	106.3	1.8	11.6	9.3	Feb
	Mar	106.0	105.7	105.9	103.5	106.1	105.9	103.8	105.9	104.8	106.1	106.8	108.1	100.9	107.1	106.8	107.5	106.1	1.5	12.9	9.6	Mar
	Apr	105.9	105.4	105.6	103.4	106.3	106.1	103.9	106.0	103.9	105.5	106.9	106.7	100.8	108.3	106.6	111.5	107.0	-0.1	12.2	9.9	Apr
	May	103.8	103.7	104.9	104.5	103.8	104.7	102.0	104.7	103.2	103.0	104.1	105.9	101.2	105.0	105.7	109.3	104.8	-1.9	8.5	9.8	May
	Jun	107.7	107.0	108.0	110.0	108.5	108.6	106.8	108.7	105.2	108.7	107.9	106.2	103.4	104.0	106.8	108.6	109.3	3.7	10.8	9.9	June
	Jul	109.1	107.9	108.4	109.1	110.4	110.6	109.2	110.4	103.9	108.4	111.6	109.3	104.0	102.8	106.7	106.4	110.6	1.3	10.3	10.0	July
	Aug	110.5	109.0	109.9	111.0	112.8	112.9	110.0	112.1	103.0	110.7	113.0	110.0	100.9	106.4	108.1	111.6	111.7	1.3	10.9	10.2	Aug
	Sep	110.6	109.4	110.5	113.0	112.6	112.4	106.6	112.4	106.0	110.5	110.0	112.2	101.4	110.1	107.6	107.3	109.2	0.1	10.9	10.4	Sept
	Oct	111.2	110.0	110.1	114.3	113.5	113.5	109.6	111.6	110.7	109.4	110.8	105.8	101.4	109.0	108.4	106.0	110.8	0.5	11.5	10.7	Oct
	Nov	111.7	111.3	111.1	113.4	112.8	112.8	110.0	112.2	111.0	111.1	111.8	110.4	101.1	109.7	107.9	107.8	113.1	0.5	11.7	10.9	Nov
	Dec	112.2	111.2	111.0	113.5	113.4	113.4	109.7	113.8	111.8	111.5	112.9	111.7	100.8	109.2	109.3	111.3	112.7	0.4	10.7	11.0	Dec
2011	Jan	110.7	108.5	106.0	67.2	111.7	116.5	107.8	114.9	110.8	112.4	111.6	108.3	105.8	108.1	111.2	113.2	111.6	-1.4	7.9	10.8	11-Jan
	Feb	114.2	114.1	114.4	117.6	115.5	115.2	110.2	115.1	115.5	114.4	118.6	111.6	101.9	103.7	111.7	114.9	114.6	3.2	9.4	10.6	Feb
	Mar	115.0	114.9	114.2	118.0	116.0	116.3	109.8	115.7	118.2	115.1	120.5	111.9	101.8	105.1	111.6	115.9	113.8	0.7	8.5	10.3	Mar
	Apr	115.5	116.3	116.1	114.9	116.4	115.5	112.3	116.3	116.1	114.8	117.8	112.2	102.5	106.1	111.6	115.1	115.5	0.5	9.1	10.0	Apr
	May	115.8	116.8	116.7	116.0	116.7	116.2	112.9	117.2	116.0	116.4	120.1	116.2	102.8	105.6	111.7	115.9	114.7	0.2	11.5	10.2	May
	Jun	116.6	116.6	116.3	112.4	118.0	117.2	112.1	117.2	116.3	115.4	121.1	116.5	102.0	106.5	111.7	116.8	114.7	0.7	8.3	10.0	Jun
	Jul	116.3	116.8	115.6	111.8	118.0	117.6	112.2	117.4	118.3	116.7	118.8	119.0	103.4	104.9	112.5	117.3	115.8	-0.3	6.6	9.7	Jul
	Aug	118.3	118.7	117.8	113.4	119.9	119.1	113.8	117.9	119.9	119.7	121.1	122.1	103.4	107.9	112.6	116.1	116.9	1.7	7.1	9.4	Aug
	Sep	120.0	121.3	119.6	115.5	120.7	119.8	114.1	118.4	124.8	120.2	123.6	121.3	103.7	108.2	113.2	117.7	117.2	1.4	8.4	9.2	Sept
	Oct	119.9	121.2	119.1	115.5	120.9	120.0	114.6	119.1	125.6	120.3	121.7	121.3	104.3	111.1	113.2	118.8	116.7	-0.1	7.8	8.9	Oct
	Nov	120.0	121.1	118.9	119.0	120.8	119.7	115.5	120.9	125.1	119.7	123.3	122.8	105.0	108.6	113.7	119.0	120.5	0.1	7.4	8.5	Nov
	Dec	122.3	122.0	119.6	121.1	124.5	123.8	115.2	120.2	128.0	119.2	122.1	128.2	104.6	107.9	114.6	121.1	117.4	2.0	9.0	8.4	Dec
2012	Jan	128.9	128.2	127.4	113.4	125.5	127.1	119.3	119.7	135.4	120.6	123.3	127.4	105.9	108.9	114.9	123.4	119.9	5.3	16.4	9.1	12-Jan
	Feb	129.2	128.4	127.5	113.5	126.3	126.2	119.3	119.7	135.5	120.6	123.3	127.5	105.9	108.9	114.9	123.4	119.9	0.3	13.1	9.4	Feb
	Mar	130.7	132.6	132.1	129.5	129.1	128.9	113.2	135.2	136.9	127.4	129.0	137.6	110.6	115.1	124.2	122.9	131.4	1.2	13.7	9.9	Mar
	Apr	131.1	133.0	132.6	130.7	129.4	129.2	114.6	136.3	136.9	128.1	129.4	137.6	111.1	116.4	124.4	123.1	132.3	0.3	13.4	10.3	Apr
	May	132.1	134.0	133.6	132.1	131.1	130.9	115.5	136.8	137.2	128.4	130.1	138.2	111.7	117.8	125.3	123.5	133.0	0.8	14.1	10.5	May
	Jun	134.1	135.8	134.0	132.1	131.4	131.3	116.1	137.0	146.5	128.3	130.4	138.3	112.1	117.6	125.5	123.7	133.4	1.5	15.0	11.1	Jun
	Jul	134.5	135.5	133.6	132.4	131.7	131.6	116.4	137.0	146.9	128.5	130.8	138.7	112.2	118.4	125.9	124.2	133.6	0.2	15.6	11.8	Jul
	Aug	135.4	136.7	134.3	133.8	132.5	132.4	117.0	137.9	148.3	129.5	131.5	139.6	112.6	119.3	126.1	126.0	134.8	0.7	14.5	12.4	Aug
	Sep	137.0	137.7	135.4	133.9	134.2	134.0	117.3	138.9	151.1	130.3	133.3	140.4	113.3	121.0	126.6	126.2	136.1	1.2	14.2	12.9	Sept
	Oct	138.2	138.3	135.6	134.5	135.3	135.1	117.6	139.7	152.9	131.2	132.0	141.5	113.6	121.9	127.9	126.8	136.9	0.9	15.3	13.5	Oct
	Nov	139.0	138.9	136.1	134.5	136.2	136.0	118.1	140.1	154.2	131.8	133.3	142.1	113.7	122.8	128.6	127.2	137.0	0.6	15.8	14.2	Nov
	Dec	140.0	139.8	136.9	136.7	137.6	137.3	118.8	141.2	155.1	132.1	133.6	143.1	113.8	122.8	129.0	127.3	137.2	0.8	14.5	14.6	Dec
2013	Jan	140.8	142.3	137.9	137.8	138.6	138.4	120.0	141.8	155.4	132.4	134.0	143.6	113.9	122.9	129.4	127.5	137.6	0.5	9.2	14.0	13-Jan
	Feb	142.0	142.3	137.9	137.9	139.9	139.6	121.0	143.0	156.7	133.3	135.3	144.9	114.3	124.1	130.5	128.6	138.9	0.9	9.8	13.7	Feb
	Mar	142.8	142.0	139.3	138.5	140.7	140.5	121.7	144.0	157.5	134.2	136.3										

2015	Jan	164.7	161.2	158.1	160.7	166.9	166.4	138.9	164.2	174.9	153.0	153.9	165.3	123.6	142.6	148.6	147.6	158.4	0.80	8.21	8.15	15-Jan
	Feb	165.9	162.4	159.4	162.3	168.2	167.7	140.2	165.1	175.8	154.2	155.0	166.6	124.1	143.5	149.3	148.7	159.4	0.70	8.41	8.21	Feb
	Mar	167.4	163.7	160.7	163.6	169.9	169.4	141.4	166.6	176.9	155.6	156.7	168.1	124.2	144.3	150.9	149.9	160.8	0.91	8.58	8.26	Mar
	Apr	168.7	164.7	161.7	164.9	171.6	171.0	142.7	167.5	177.9	156.4	157.8	169.5	124.5	144.9	151.6	150.8	161.8	0.78	8.74	8.33	Apr
	May	170.6	166.8	163.7	167.0	173.5	173.0	144.3	169.5	179.7	157.9	159.6	171.9	124.8	145.9	153.7	152.1	163.5	1.11	9.09	8.40	May
	Jun	172.2	168.2	164.9	168.6	175.4	174.8	145.4	170.5	181.1	158.7	160.5	174.2	125.4	147.4	154.9	153.3	165.1	0.93	9.23	8.48	Jun
	Jul	173.3	169.2	165.8	170.0	176.7	176.1	146.4	171.6	182.0	159.4	161.4	175.6	125.7	148.3	155.6	153.6	166.2	0.65	9.18	8.54	Jul
	Aug	174.3	170.2	166.7	171.3	177.8	177.2	146.9	172.4	182.9	160.4	162.2	176.1	125.9	148.8	157.0	154.4	167.3	0.57	9.25	8.59	Aug
	Sep	175.5	171.3	167.9	172.8	179.2	178.6	148.2	173.7	183.9	161.4	163.5	176.9	126.2	149.6	158.2	155.1	167.9	0.66	9.46	8.68	Sep
	Oct	176.2	172.0	168.5	173.7	180.1	179.5	148.8	174.6	184.4	161.8	164.0	177.9	126.5	150.2	159.4	155.5	168.2	0.44	9.40	8.79	Oct
	Nov	177.4	172.8	169.3	175.1	181.5	180.9	149.7	175.8	185.0	162.3	164.5	180.0	126.8	150.9	160.2	156.1	168.9	0.66	9.44	8.92	Nov
	Dec	179.2	174.3	170.7	177.2	183.8	183.1	151.5	178.5	185.9	163.3	165.6	182.4	127.2	152.1	161.2	158.2	170.7	1.03	9.67	9.06	Dec
2016	Jan	180.8	175.8	172.2	178.9	185.5	184.8	152.8	179.9	187.0	164.2	167.1	184.7	127.7	153.1	163.3	160.1	172.2	0.86	9.73	9.19	16-Jan
	Feb	186.2	181.2	174.9	183.4	187.8	187.1	154.7	182.4	205.6	167.1	169.2	186.9	128.4	154.3	167.1	160.8	174.4	3.01	12.25	9.52	Feb
	Mar	190.0	184.6	178.0	187.8	192.1	191.3	157.7	186.2	208.8	170.5	171.3	191.8	129.3	155.9	169.9	162.0	176.6	2.02	13.48	9.93	Mar
	Apr	194.1	188.0	179.3	191.4	194.3	193.5	158.7	188.5	222.1	171.4	172.7	194.1	129.7	157.0	171.2	162.8	178.1	2.17	15.05	10.47	Apr
	May	199.8	193.3	183.7	197.7	199.8	198.9	162.5	193.0	230.5	176.1	176.6	199.9	130.5	160.3	175.7	165.4	183.7	2.96	17.15	11.16	May
	Jun	203.4	197.0	187.0	202.2	203.0	202.1	165.8	197.0	235.6	179.6	178.9	204.5	131.2	161.2	177.4	167.0	185.5	1.76	18.11	11.92	Jun
	Jul	206.1	199.7	189.1	205.2	205.7	204.7	168.2	199.6	239.1	180.5	179.6	208.3	131.7	162.1	181.4	168.1	187.3	1.35	18.93	12.75	Jul
	Aug	208.0	201.4	190.6	207.4	207.7	206.6	170.0	201.6	241.2	181.6	180.4	209.8	132.1	162.8	184.9	168.4	188.1	0.91	19.33	13.60	Aug
	Sep	209.6	203.6	192.4	209.4	209.4	208.3	171.5	203.8	243.1	182.8	181.3	211.2	132.4	163.6	187.6	168.9	188.9	0.79	19.48	14.44	Sep
	Oct	211.3	205.1	193.9	211.2	211.3	210.2	172.9	205.8	244.8	184.0	182.2	212.4	132.8	164.4	190.0	169.5	190.0	0.81	19.91	15.32	Oct
	Nov	213.0	206.7	195.6	213.1	213.2	212.1	173.9	207.8	246.3	185.2	183.3	213.6	133.1	165.3	192.1	170.2	191.0	0.78	20.07	16.19	Nov
	Dec	215.3	208.5	197.5	215.3	216.2	215.0	175.0	210.1	247.7	186.6	184.4	215.7	133.4	166.5	194.4	171.7	193.1	1.08	20.12	17.05	Dec
2017	Jan	217.5	210.0	199.0	217.2	219.1	217.9	176.0	212.0	249.1	188.3	185.6	218.0	133.6	167.2	196.3	172.9	194.5	1.03	20.31	17.91	17-Jan
	Feb	220.8	212.7	201.5	220.5	223.6	222.3	177.6	214.6	251.1	190.9	187.5	221.0	134.2	169.6	198.2	174.3	196.1	1.52	18.57	18.42	Feb
	Mar	224.7	215.7	204.5	224.0	228.8	227.5	179.4	218.2	253.5	193.7	189.7	223.9	134.9	172.5	200.4	176.3	199.3	1.76	18.27	18.79	Mar
	Apr	228.3	217.9	206.6	226.0	233.6	232.3	180.8	221.9	255.6	196.5	192.0	226.8	135.3	175.3	202.5	178.3	202.6	1.61	17.62	18.98	Apr
	May	232.5	220.5	208.9	229.0	239.7	238.2	182.6	225.8	257.7	199.1	194.4	229.7	135.9	177.8	204.7	180.4	205.1	1.84	16.34	18.88	May
	Jun	236.2	223.7	212.4	232.6	244.6	243.2	184.0	229.5	259.5	202.4	197.0	232.9	136.3	179.2	207.4	182.6	207.6	1.60	16.15	18.69	Jun
	Jul	239.2	225.9	214.9	235.9	248.5	247.1	185.5	232.5	260.9	205.6	200.1	235.1	136.6	180.4	209.2	185.8	209.5	1.25	16.04	18.43	Jul
	Aug	241.5	228.1	217.2	239.0	251.5	250.0	186.5	235.2	262.2	208.4	202.1	237.4	136.8	181.5	210.6	187.5	211.4	0.99	16.13	18.15	Aug
	Sep	243.5	230.2	219.3	242.2	253.9	252.4	187.7	237.5	263.4	210.8	203.7	239.6	137.1	182.8	212.1	189.1	213.2	0.84	16.18	17.87	Sep
	Oct	245.5	232.1	221.1	245.4	256.2	254.7	189.0	239.8	264.7	212.7	205.2	241.8	137.4	183.9	214.0	190.8	215.0	0.82	16.19	17.57	Oct
	Nov	247.6	234.3	223.2	248.6	258.7	257.1	190.2	242.1	266.2	214.7	206.9	244.0	138.4	185.0	215.9	192.5	216.8	0.85	16.27	17.26	Nov
	Dec	249.3	235.8	224.7	251.5	260.3	258.7	191.5	243.8	267.4	216.4	208.4	246.5	139.4	186.2	217.6	194.3	218.6	0.66	15.78	16.92	Dec
2018	Jan	251.3	237.3	226.3	254.6	262.7	261.1	192.9	245.7	268.9	218.2	210.0	249.2	140.3	187.5	219.5	196.1	220.6	0.83	15.56	16.55	18-Jan
	Feb	253.4	239.3	228.3	258.0	265.0	263.4	194.5	247.6	270.6	220.0	211.6	251.6	141.3	188.9	221.2	197.8	222.5	0.82	14.76	16.24	Feb
	Mar	255.6	241.3	230.1	261.3	267.5	265.9	196.1	249.7	272.4	221.8	213.5	254.0	142.1	190.4	223.1	199.4	224.5	0.86	13.75	15.87	Mar
	Apr	257.7	243.3	232.2	264.5	270.0	268.4	197.7	251.9	274.1	223.6	215.4	256.3	143.0	192.0	225.0	201.1	226.6	0.85	12.89	15.47	Apr
	May	260.6	245.4	234.5	267.9	273.7	272.0	199.4	254.1	276.0	225.5	217.4	258.7	143.9	193.6	227.3	202.9	228.7	1.10	12.08	15.10	May
	June	263.8	247.9	237.0	271.2	278.1	276.4	201.3	256.4	278.0	227.6	219.5	261.1	144.8	195.3	229.7	204.7	230.8	1.24	11.68	14.71	June
	July	267.0	250.1	239.2	274.6	282.6	280.8	203.1	258.7	280.0	229.6	221.8	263.6	145.7	197.0	231.9	206.5	233.0	1.23	11.66	14.33	July
	August	269.7	252.0	241.3	278.0	286.5	284.6	205.0	261.0	281.2	231.3	223.4	265.3	146.7	198.2	233.5	207.9	234.4	1.00	11.67	13.95	August
	September	272.0	253.5	242.9	281.5	289.5	287.6	206.7	263.2	282.7	233.2	225.0	267.2	147.7	199.4	235.2	209.4	235.9	0.86	11.70	13.58	September

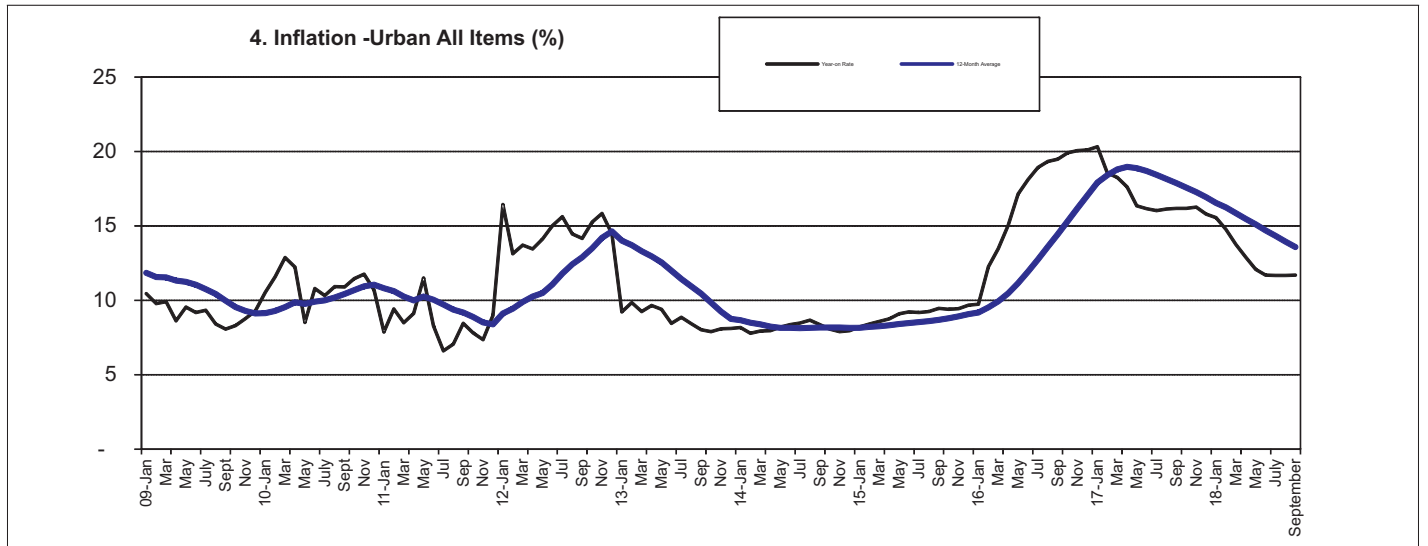


Table 4 Rural Consumer Price Index (Base November 2009 = 100)

		All Items	All Items less Farm Produce.	All Items less Farm Produce, and Energy	Imported Food	Food	Food & Non Alcoholic Bev.	Alcoholic Beverage, Tobacco and Kola	Clothing and Footwear	Housing, Water, Electricity, Gas and Other Fuel	Furnishings & Household Equipment, Maintenance.	Health.	Transport	Communication	Recreation & Culture.	Education	Restaurant & Hotels	Miscellaneous Goods & Services	Month-on (%)	Year-on (%)	12-month average (%)	
Weights		1000.00	480.09	394.61	114.03	532.25	540.89	10.61	85.68	147.16	50.72	32.25	57.19	4.01	6.65	38.93	10.14	15.78				
2009	Jan	88.9	88.5	90.0		89.1	89.1	97.5	96.2	87.1	81.7	97.9	86.6	95.2	91.2	84.5	97.8	92.1	0.8	15.9	12.1	09-Jan
	Feb	89.5	89.5	90.2		89.6	89.6	98.3	95.7	89.0	81.9	99.0	85.6	95.2	89.7	85.4	98.8	93.1	0.7	17.2	13.1	Feb
	Mar	90.2	89.8	90.8		90.5	90.5	98.0	96.1	88.8	82.5	99.6	85.7	95.2	90.2	87.0	97.9	94.7	0.7	16.7	13.9	Mar
	Apr	90.7	90.2	91.7		91.3	91.3	98.0	96.2	88.5	84.4	102.4	92.0	95.2	90.8	88.9	99.5	95.3	0.6	15.7	14.6	Apr
	May	92.6	92.3	93.8		93.3	93.3	98.8	96.5	89.7	84.2	100.2	94.0	95.2	91.9	88.4	98.0	91.3	2.1	15.1	15.1	May
	June	94.4	93.7	95.1		95.4	95.3	98.6	97.1	93.4	84.8	100.8	89.6	95.2	92.1	88.6	98.2	97.5	1.9	12.2	15.1	June
	July	96.5	95.5	97.5		97.7	97.7	100.4	95.7	95.9	99.6	102.5	87.2	98.3	94.7	90.4	98.3	99.0	2.3	12.0	14.8	July
	Aug	97.8	96.1	96.9		98.8	98.7	99.6	98.3	95.6	100.6	103.0	89.9	100.9	96.2	101.3	98.9	100.1	1.3	12.4	14.8	Aug
	Sep	98.5	97.4	98.2		99.4	99.3	98.6	98.4	96.8	97.2	103.9	93.2	100.9	95.8	99.8	100.1	99.6	0.7	11.5	14.7	Sept
	Oct	99.2	98.4	99.0		100.0	100.0	99.5	98.9	97.9	98.0	104.4	94.6	100.0	96.0	96.6	99.6	98.9	0.7	13.2	14.5	Oct
	Nov	100.0	100.0	100.0	100.0	100.0	100.0	100.0	100.0	100.0	100.0	100.0	100.0	100.0	100.0	100.0	100.0	100.0	0.8	14.2	14.3	Nov
	Dec	102.8	101.7	102.1	102.3	103.1	103.5	103.5	102.0	99.2	102.4	102.0	101.6	100.6	99.9	102.1	102.0	101.9	2.8	16.6	14.3	
2010	Jan	103.6	101.9	102.4	102.2	104.4	104.9	103.6	101.8	98.9	103.9	103.5	102.7	99.5	100.7	103.6	105.5	103.7	0.8	16.5	14.4	10-Jan
	Feb	105.6	103.8	104.7	103.3	106.4	106.9	103.5	103.3	100.6	105.5	104.5	105.3	100.5	99.5	104.3	106.0	105.6	1.9	17.9	14.5	Feb
	Mar	104.0	102.8	103.5	102.6	104.6	104.9	104.7	103.3	100.0	105.3	104.0	102.1	100.4	100.1	104.4	104.0	103.0	-1.5	15.3	14.4	Mar
	Apr	105.6	103.6	104.7	106.6	106.8	107.2	105.6	104.3	100.8	102.3	103.3	106.8	100.0	98.7	104.7	108.2	105.5	1.5	16.4	14.5	Apr
	May	107.2	106.5	107.9	105.4	107.2	107.5	105.3	106.8	104.6	102.3	105.4	106.6	99.4	101.8	111.0	110.7	109.1	1.6	15.8	14.5	May
	Jun	109.6	107.8	109.2	109.2	111.2	111.5	109.9	109.4	104.4	112.4	108.9	108.4	101.0	101.5	106.4	105.4	109.9	2.2	16.1	14.9	June
	Jul	110.7	107.6	109.2	109.5	112.6	113.2	109.9	110.2	106.2	109.6	109.2	105.9	101.4	103.1	104.9	103.9	110.7	0.9	14.6	15.1	July
	Aug	113.0	109.6	110.8	111.4	114.7	115.2	114.2	113.4	108.9	109.9	111.8	107.4	100.4	103.9	104.3	103.7	110.7	2.1	15.6	15.3	Aug
	Sep	113.8	111.7	112.7	114.1	115.1	114.5	110.9	112.4	113.1	113.5	113.6	112.2	102.2	106.9	109.0	107.0	113.8	0.7	15.6	15.7	Sept
	Oct	114.0	113.5	113.6	113.9	114.4	114.5	113.5	113.9	111.2	116.4	118.1	108.1	104.1	110.0	111.5	110.6	110.5	0.1	15.0	15.8	Oct
	Nov	113.6	112.1	111.5	116.5	115.7	115.4	114.0	111.8	113.9	114.8	110.5	112.8	102.7	106.2	107.5	108.5	112.6	-0.3	13.6	15.7	Nov
	Dec	115.9	113.8	113.7	117.0	117.1	117.2	113.7	113.6	114.3	114.7	112.6	114.0	103.6	106.6	109.0	108.2	111.5	2.0	12.7	15.4	Dec
2011	Jan	119.7	119.5	118.9	120.1	116.5	120.5	113.0	114.0	116.4	114.5	111.1	110.0	101.8	108.5	109.4	108.2	114.5	3.3	15.6	15.3	11-Jan
	Feb	118.8	116.7	116.4	129.4	119.4	120.2	116.1	116.8	114.1	116.6	111.4	121.9	107.4	108.4	109.7	110.1	113.8	-0.8	12.5	14.9	Feb
	Mar	121.1	119.6	120.2	120.6	119.9	119.8	115.2	117.3	114.2	116.6	115.0	118.4	107.8	109.2	110.6	109.1	111.9	1.9	16.4	15.0	Mar
	Apr	119.4	119.2	119.4	122.6	121.1	120.10	116.4	116.1	125.1	116.0	116.7	116.9	107.2	107.8	111.2	111.9	114.1	-1.3	13.1	14.7	Apr
	May	121.2	120.6	120.8	124.4	120.1	120.40	116.9	119.0	125.5	116.7	113.8	115.4	108.1	108.8	112.1	112.0	116.4	1.5	13.0	14.5	May
	Jun	122.6	122.4	122.8	111.5	121.9	121.49	116.0	118.6	126.0	117.1	118.8	120.1	108.7	109.2	112.6	112.1	120.6	1.1	11.8	14.1	Jun
	Jul	123.6	122.8	123.4	113.3	122.4	122.45	112.5	117.9	126.0	118.2	117.9	122.1	108.5	116.2	112.8	113.1	123.2	0.8	11.7	13.8	Jul
	Aug	125.6	123.3	123.8	118.1	126.9	127.0	118.6	119.4	128.4	120.1	119.9	121.8	108.8	110.9	113.2	114.2	125.4	1.6	11.1	13.5	Aug
	Sep	127.4	125.3	125.3	119.4	128.2	128.0	118.0	121.2	127.2	118.4	121.3	123.1	108.3	111.0	114.2	114.0	125.2	1.4	11.9	13.2	Sept
	Oct	128.6	127.8	128.0	118.1	128.4	127.9	120.1	121.8	131.0	118.8	121.8	123.0	108.6	122.1	114.6	114.8	126.4	0.9	12.8	13.0	Oct
	Nov	128.6	127.4	127.3	128.6	129.1	129.6	121.8	122.6	130.5	120.7	122.2	123.7	108.9	121.6	114.6	115.1	129.7	0.0	13.1	13.0	Nov
	Dec	129.0	127.1	127.0	128.8	131.1	131.1	122.2	124.1	135.1	120.6	123.4	129.2	108.1	117.9	114.6	117.0	127.1	0.3	11.3	12.8	Dec
2012	Jan	131.3	129.9	130.7	128.4	132.4	134.0	126.4	122.3	128.7	120.6	122.2	128.2	111.0	119.2	115.2	117.2	130.8	1.8	9.7	12.3	12-Jan
	Feb	131.6	130.0	130.9	128.4	131.8	131.7	126.4	122.3	128.8	120.6	122.2	128.2	111.0	119.2	115.2	117.2	130.8	0.3	10.9	12.2	Feb
	Mar	134.4	137.1	136.5	130.3	134.9	134.7	127.4	132.3	142.7	133.2	130.2	130.0	114.6	117.9	126.7	120.2	131.7	2.1	11.0	11.8	Mar
	Apr	134.4	137.0	136.5	131.8	135.0	134.8	127.7	132.0	142.3	133.6	130.7	130.3	115.1	118.3	125.5	121.0	131.8	0.01	12.5	11.7	Apr
	May	135.4	138.9	138.5	132.9	136.5	136.3	128.1	132.6	142.6	133.9	131.3	130.7	115.3	118.8	125.7	121.9	132.2	0.74	11.7	11.6	May
	Jun	136.5	139.8	138.1	133.0	137.4	137.2	128.5	132.6	146.3	134.3	131.6	131.3	115.7	119.0	125.9	122.6	132.5	0.83	11.4	11.6	Jun
	Jul	136.9	140.4	138.9	133.3	138.0	137.7	129.0	132.9	146.4	134.2	131.6	131.6	115.8	119.1	125.8	122.9	132.7	0.25	10.7	11.5	Jul
	Aug	137.8	140.9	139.4	134.5	139.1	138.9	129.4	133.5	147.2	134.7	132.2	132.1	116.0	119.3	126.6	123.0	132.8	0.65	9.7	11.4	Aug
	Sep	139.0	141.3	139.6	134.4	140.6	140.3	130.0	134.2	148.9	135.7	132.4	132.9	116.2	120.0	126.8	124.0	132.9	0.89	9.1	11.1	Sept
	Oct	140.2	141.9	140.1	136.0	142.0	141.8	131.0	135.5	149.9	136.0	133.0	134.0	116.6	120.7	128.2	124.3	134.0	0.88	9.1	10.8	Oct
	Nov	141.1	142.5	141.0	137.7	143.2	142.9	132.0	136.3	150.3	136.7	133.7	134.2	116.8	120.8	129.0	124.5	134.5	0.63	9.8	10.5	Nov
	Dec	142.1	143.5	141.9	138.3	144.5	144.2	132.8	137.1	151.1	136.9	134.1	135.7	117.0	121.2	129.1	125.2	135.0	0.73	10.2	10.5	Dec
2013	Jan	143.2	144.9	142.4	139.5	145.7	145.4	133.6	138.4	152.0	138.5	134.5	136.1	117.1	121.4	129.2	125.6	135.2	0.73	9.1	10.4	13-Jan
	Feb	144.1	144.9	142.7	140.1	146.4	146.1	134.7	139.7	153.4	139.7	135.6	137.3	117.6	122.4	129.9	126.6	136.2	0.65	9.5	10.3	Feb
	Mar	145.3	147.1	145.9	140.0	148.2	147.9	135.4	1													

2014	Jan	154.4	155.5	153.3	149.0	158.6	158.3	142.7	148.4	160.2	149.2	144.9	145.3	122.1	130.2	138.7	134.0	146.1	0.68	7.8	8.3	14-Jan
	Feb	155.1	156.1	154.2	149.6	159.5	159.2	143.2	149.2	160.7	149.9	145.4	145.9	122.3	131.3	138.9	134.4	146.4	0.49	7.7	8.1	Feb
	Mar	156.4	156.8	154.9	150.7	161.2	160.8	144.0	149.9	161.6	150.8	146.4	146.9	122.8	131.8	139.5	135.2	147.2	0.81	7.6	8.1	Mar
	Apr	157.3	157.6	155.7	151.5	162.3	162.0	144.7	150.7	162.3	151.3	146.9	147.6	123.4	132.5	139.9	135.7	147.4	0.59	7.5	8.0	Apr
	May	158.5	158.6	156.7	152.8	163.6	163.2	145.6	152.1	163.4	152.6	148.0	148.6	124.0	133.5	141.0	136.9	148.6	0.77	7.8	7.9	May
	Jun	159.7	159.7	157.6	154.0	164.9	164.5	146.6	153.2	164.7	153.7	148.9	149.6	124.7	134.3	141.4	137.8	149.7	0.74	8.0	7.9	Jun
	Jul	160.7	159.8	157.9	154.4	166.0	165.6	147.5	154.1	165.8	154.2	149.5	150.0	124.8	134.9	141.6	138.7	150.4	0.60	8.1	7.8	Jul
	Aug	161.4	160.3	158.5	155.1	166.8	166.5	148.2	154.9	166.2	155.0	150.3	150.7	125.0	135.5	142.5	139.2	151.2	0.47	8.37	7.86	Aug
	Sep	162.4	161.5	159.8	156.3	167.9	167.5	149.0	156.0	167.1	156.3	150.9	151.2	125.2	136.1	143.8	139.9	152.2	0.62	8.24	7.88	Sep
	Oct	163.3	162.4	160.7	157.3	168.8	168.4	149.9	157.1	167.7	157.2	152.0	151.8	125.7	136.5	144.8	141.0	153.3	0.52	8.02	7.90	Oct
	Nov	164.2	163.3	161.6	158.3	169.7	169.3	150.5	158.2	168.6	158.2	153.0	152.3	126.0	137.0	145.8	141.9	154.2	0.57	7.90	7.91	Nov
	Dec	165.5	164.6	162.9	159.7	171.2	170.9	151.6	159.6	169.7	159.4	154.2	153.4	126.2	137.7	146.6	143.1	155.4	0.82	7.96	7.91	Dec
2015	Jan	166.9	165.8	164.2	161.0	172.7	172.3	152.6	161.1	170.9	160.8	155.5	154.4	126.4	138.6	147.7	144.4	156.5	0.81	8.09	7.94	15-Jan
	Feb	168.0	166.9	165.2	162.4	173.9	173.5	153.5	162.4	172.0	161.8	156.6	155.1	126.8	139.2	148.8	145.4	157.6	0.67	8.29	7.99	Feb
	Mar	169.5	168.3	166.6	163.7	175.6	175.2	154.6	163.8	173.2	163.3	158.0	156.2	127.0	139.9	149.8	146.6	159.0	0.91	8.40	8.05	Mar
	Apr	170.8	169.3	167.5	165.1	177.1	176.7	155.4	164.7	174.5	164.2	158.8	157.4	127.2	140.5	150.5	147.5	159.9	0.74	8.56	8.14	Apr
	May	172.6	171.2	169.3	166.8	178.9	178.5	156.9	166.8	176.6	165.9	160.8	159.1	127.6	141.7	151.9	149.1	161.8	1.08	8.90	8.24	May
	Jun	174.2	172.6	170.5	168.5	180.8	180.4	158.2	168.3	177.9	167.1	161.5	160.6	128.0	142.8	153.3	150.6	163.6	0.93	9.10	8.33	Jun
	Jul	175.5	173.7	171.5	170.0	182.2	181.8	159.3	169.6	179.0	167.7	162.6	161.6	128.3	143.7	154.3	151.8	164.5	0.73	9.24	8.43	Jul
	Aug	176.6	174.8	172.5	171.4	183.3	182.9	160.2	170.6	180.2	168.4	163.3	162.4	128.6	143.9	155.8	152.7	165.4	0.60	9.38	8.52	Aug
	Sep	177.5	175.7	173.3	172.8	184.3	183.9	161.3	171.4	181.0	169.5	163.9	163.3	128.7	144.5	157.5	153.7	166.1	0.55	9.30	8.61	Sep
	Oct	178.2	176.4	174.0	173.6	185.1	184.6	162.1	172.3	181.5	169.7	164.3	164.2	129.0	145.0	158.7	154.3	166.9	0.39	9.16	8.70	Oct
	Nov	179.4	177.4	175.0	175.1	186.5	186.1	162.9	173.4	182.2	170.1	164.8	165.8	129.3	145.6	159.6	155.0	167.9	0.66	9.26	8.81	Nov
	Dec	181.1	178.7	176.3	177.0	188.6	188.1	164.4	175.5	183.2	171.1	166.0	167.5	130.0	146.9	160.4	156.4	169.9	0.95	9.41	8.93	Dec
2016	Jan	182.7	180.2	177.6	178.9	190.3	189.8	166.1	177.2	184.4	172.0	167.4	168.9	130.6	147.8	162.6	158.0	171.6	0.88	9.48	9.05	16-Jan
	Feb	186.0	184.6	180.5	184.0	193.2	192.6	168.2	179.8	190.9	174.1	169.4	171.6	131.6	149.2	167.2	159.5	172.8	1.19	10.69	9.25	Feb
	Mar	189.9	188.0	183.2	188.9	197.5	197.0	170.6	183.9	195.3	177.6	171.3	175.3	132.3	151.1	169.5	160.1	176.1	2.14	12.04	9.56	Mar
	Apr	192.6	190.8	185.5	192.4	200.3	199.7	172.3	185.9	198.4	180.0	172.5	178.5	133.3	153.0	172.7	160.7	177.5	1.40	12.77	9.92	Apr
	May	197.4	195.9	190.2	198.0	205.0	204.4	176.8	190.3	204.8	184.4	176.3	182.7	134.2	156.4	177.7	165.3	182.9	2.50	14.35	10.38	May
	Jun	200.5	199.3	193.1	202.4	207.6	207.0	179.5	194.3	210.3	186.6	178.6	185.4	135.1	157.3	180.8	166.9	184.7	1.58	15.09	10.90	Jun
	Jul	202.8	201.5	194.3	204.4	209.9	209.3	181.1	196.4	213.8	187.3	180.0	187.0	135.6	158.2	183.0	168.1	185.7	1.12	15.53	11.43	Jul
	Aug	205.0	203.2	195.8	206.2	212.7	212.0	182.4	198.4	215.6	188.2	180.8	188.4	136.0	159.0	185.6	168.4	186.5	1.09	16.10	12.00	Aug
	Sep	206.7	205.0	197.1	208.1	214.4	213.7	183.8	200.5	217.4	189.4	181.6	189.6	136.4	159.9	189.0	168.8	187.4	0.83	16.43	12.60	Sep
	Oct	208.4	206.5	198.8	209.9	216.2	215.5	185.1	202.7	219.2	190.6	182.7	190.8	136.8	160.8	192.4	169.2	188.5	0.84	16.95	13.25	Oct
	Nov	210.1	207.8	200.1	211.6	218.0	217.3	186.2	204.9	220.5	191.9	183.6	192.0	137.0	161.7	194.4	169.6	189.4	0.79	17.10	13.90	Nov
	Dec	212.2	208.7	200.9	213.7	220.8	220.1	187.4	206.9	221.7	193.4	184.6	193.6	137.2	162.6	196.4	170.8	190.9	1.04	17.20	14.54	Dec
2017	Jan	214.4	210.0	202.0	215.7	223.6	222.8	188.4	208.7	223.0	194.8	185.7	195.3	137.4	163.5	197.9	171.7	192.1	1.00	17.34	15.18	17-Jan
	Feb	217.5	212.1	203.9	218.5	228.0	227.2	189.3	210.5	225.7	195.8	186.7	196.4	137.5	164.2	199.8	172.2	192.4	1.47	16.98	15.70	Feb
	Mar	221.2	214.6	206.2	221.4	232.8	231.9	190.9	213.4	228.6	198.0	188.5	198.4	137.8	166.2	201.8	173.5	194.4	1.69	16.47	16.05	Mar
	Apr	224.7	217.1	208.7	223.3	237.4	236.5	192.7	216.6	230.6	200.3	190.3	200.4	138.0	168.3	204.0	174.7	196.8	1.59	16.69	16.37	Apr
	May	229.0	219.7	211.1	226.2	243.3	242.4	194.5	220.1	232.9	202.6	192.2	202.8	138.5	170.3	206.2	176.6	199.0	1.92	16.02	16.50	May
	Jun	232.6	222.4	213.9	229.7	248.0	247.1	195.9	223.5	234.8	205.2	194.4	205.1	138.8	171.3	208.4	178.4	201.2	1.57	16.01	16.56	Jun
	Jul	235.4	224.6	216.3	231.7	251.6	250.7	197.3	226.1	235.9	207.6	197.0	206.7	139.0	172.3	209.9	180.3	202.9	1.18	16.08	16.60	Jul
	Aug	237.6	226.6	218.6	234.6	254.3	253.4	198.5	228.7	237.0	209.8	198.8	208.3	139.3	173.0	211.3	181.7	204.5	0.95	15.91	16.58	Aug
	Sep	239.4	228.2	220.2	237.5	256.4	255.4	199.5	230.9	238.1	211.8	199.9	209.7	139.5	173.8	212.4	182.4	205.9	0.74	15.81	16.52	Sep
	Oct	241.1	229.8	221.9	240.5	258.4	257.4	200.5	232.8	239.2	213.4	201.1	211.1	139.8	174.7	213.8	183.2	207.2	0.72	15.67	16.41	Oct
	Nov	242.8	231.3	223.4	243.5	260.5	259.5	201.5	234.6	240.3	215.0	202.3	212.6	140.3	175.4	215.1	184.0	208.6	0.72	15.59	16.29	Nov
	Dec	244.1	232.2	224.2	246.1	261.9	260.9	202.5	235.8	241.3	216.2	203.4	214.3	140.9	176.1	216.4	184.9	210.1	0.54	15.02	16.10	Dec
2018	Jan	246.0	233.8	225.9	248.9	264.1	263.1	203.7	237.3	242.7	217.8	204.7	216.1	141.6	177.2	218.0	186.4	211.8	0.77	14.76	15.89	18-Jan
	Feb	247.9	235.4	227.4	252.0	266.3	265.3	205.3	239.1	244.3	219.4	206.2	217.8	142.4	178.3	219.5	187.8	213.4	0.77	13.96	15.64	Feb
	Mar	249.9	237.4	229.4	255.0	268.6	267.6	206.8	240.8	246.1	221.1	207.8	219.6	143.1	179.4	221.3	189.3	214.9	0.82	12.99	15.34	Mar
	Apr	252.0	239.6	231.8	257.8	271.0	270.0	208.3	242.7	247.6	222.7	209.5	221.3	143.8	180.8	223.0	190.6	216.6	0.82	12.13	14.95	Apr
	May	254.7	242.1	234.5	260.8	274.4	273.4	209.8	244.6	249.5	224.4	211.3	223.2	144.6	182.2	224.8	192.1	218.5	1.08	11.20	14.53	May
	June	257.8	244.6	237.1	264.0	278.6	277.5	211.7	246.7	251.5	226.2	213.1	225.2	145.4	183.7	227.0	193.7	220.3	1.23	10.83	14.08	June
	July	260.9	246.6	239.0	267.2	282.7	281.6	213.4	248.6	253.3	228.0	215.1	227.1	146.2	185.1	229.0	195.2	222.2	1.18	10.83	13.64	July
	August	263.4	248.5	241.0	270.4	286.2	285.1	215.1	250.5	254.4	229.4	216.4	228.4	147.0	186.1	230.3	196.3	223.5	0.96	10.84	13.21	August
	September	265.5	250.1	242.8	273.6	288.																

**Table 5 Combined Urban And Rural State Consumer Price Index
(Base Period: November 2009 = 100)**

	Sep-17		Aug-18		Sep-18	
State	Food	All	Food	All	Food	All
		Items		Items		Items
Abia	262.3	245.0	288.5	268.3	288.8	269.1
Abuja	245.8	237.1	282.4	264.7	284.4	267.3
Adamawa	250.1	232.7	280.2	258.1	287.4	261.9
Akwa Ibom	259.0	239.4	287.8	264.1	292.5	266.3
Anambra	255.3	242.0	286.7	268.2	287.4	269.1
Bauchi	242.0	255.1	268.2	284.3	269.1	286.8
Bayelsa	263.6	246.5	302.9	275.5	307.4	278.1
Benue	257.2	240.2	288.5	264.5	294.7	267.5
Borno	253.5	236.9	280.2	258.8	283.7	260.7
Cross River	260.0	236.5	290.1	256.7	291.4	256.4
Delta	257.6	235.7	290.8	259.3	296.1	261.6
Ebonyi	253.3	239.8	290.0	268.1	291.2	270.6
Edo	251.2	247.8	286.1	272.6	287.3	274.0
Ekiti	247.7	223.9	279.0	249.6	281.6	252.4
Enugu	256.8	230.5	286.6	256.1	291.2	259.0
Gombe	249.1	237.2	280.6	264.1	280.8	265.0
Imo	252.6	224.8	284.5	247.3	289.9	250.6
Jigawa	249.9	237.8	282.2	265.2	284.7	267.6
Kaduna	253.9	243.9	287.2	271.6	292.9	275.4
Kano	258.0	244.4	284.9	269.0	287.3	272.1
Katsina	254.6	225.3	288.5	250.1	288.2	252.1
Kebbi	250.5	244.3	280.6	270.3	286.9	275.4
Kogi	262.9	252.7	292.8	279.3	292.8	281.9
Kwara	255.1	308.5	289.1	333.0	298.9	339.3
Lagos	256.7	250.5	292.9	278.7	293.1	279.5
Nassarawa	256.3	244.8	288.7	270.5	285.8	270.0
Niger	248.9	243.1	281.7	270.2	280.4	271.0
Ogun	261.8	260.6	288.6	283.0	290.8	284.6
Ondo	256.8	244.8	288.8	271.4	293.9	275.3
Osun	257.4	244.1	285.8	268.3	290.8	271.7
Oyo	260.2	253.2	291.2	278.4	292.9	280.0
Plateau	257.2	247.3	282.7	270.6	279.9	269.0
Rivers	257.0	237.2	289.9	264.6	292.2	266.1
Sokoto	251.3	240.6	278.7	263.0	283.7	265.7
Taraba	254.9	234.1	285.2	258.8	290.0	262.6
Yobe	253.0	241.3	285.9	270.2	291.7	273.4
Zamfara	252.0	239.0	283.1	267.2	286.1	269.5

Note: Indices may not be used for inter-state price comparison because market baskets differ from state to state

Acknowledgements/Contacts

Acknowledgements

We acknowledge our technical partners, Proshare in the design, concept and production of this publication.





Contact Us

 @nigerianstat

 NBSNigeria

 www.nigerianstat.gov.ng

 **Head Office Address**
Plot 762, Independence Avenue, Central
Business District, FCT, Abuja Nigeria.

 +234 803 386 5388

 feedback@nigerianstat.gov.ng