



NATIONAL BUREAU OF STATISTICS

Air Transportation Data

(Q4 & Full Year 2017)



Report Date: March 2018

Contents

Summary	1
Total Air Passenger Traffic	3
Domestic/International Passenger Traffic.....	4
Arrivals and Departures	5
Air Traffic by Airport.....	5
Air Craft Movement.....	7
Air Craft Movement by Airport	7
Cargo Movement	8
Cargo Movement by Airport	8
Mail Movement	9
Infographics	11
Methodology	59
Appendix	60
Acknowledgements/Contacts	75

Summary

2017 Q4 Air Transportation

- The total number of air passengers who traveled to or from Nigerian airports in 2017 Q4 hit 3,659,999. This figure grew by 4.89% year-on-year and declined by 0.56% quarter-on-quarter.
- 2017 Q4 saw steady growth in the number of both domestic and international passengers traveled to or from Nigerian airports, by 6.46% and 1.01% respectively.
- For the first time of the year, more arrivals were recorded than departures for both domestic and international travelers in 2017 Q4. Arrivals and departures in all Nigerian airports in the reviewing quarter were 1,864,906 and 1,308,959.
- Lagos, Abuja, Port Harcourt, Owerri, and Kano airports served over 92% of total passengers in the 2017 Q4.
- A total of 57,484 aircraft arrived at or departed from Nigerian airports in 2017 Q4, among which 47,223 were domestic aircraft and 10,261 were international aircraft.
- The last quarter of 2017 recorded 33,425,743 KG cargo movement in Nigerian international airports. The figure declined by 41.75% year-on-year and by 25.53% quarter-on-quarter.
- The volume of cargo movement in Lagos, Port Harcourt, Abuja, Enugu, and Kano declined sharply by 40.13%, 41.67%, 79.73%, 83.88% and 10.80% year-on-year in 2017 Q4.
- In 2017 Q4, the weight of mail to move through Lagos was 363,228 kilograms which increased by 255.23% from 2016 Q4. Mail movement through Abuja international airports grew by 15.11% year-on-year.

2017 Full Year Air Transportation

- The annual total number of passengers who traveled through Nigerian airports was recorded as 13,394,945, of which 6,693,687 at arrivals and 6,701,258 at departures. This total figure in 2017 fell by 8.03% from 2016, mainly due to the six-week closure of Abuja airport in March 2017.
- The annual total numbers of domestic and international air passengers declined by -8.40% and -7.13% respectively compared with the previous year.
- Lagos, Abuja, Port Harcourt, Owerri and Kano airports remained the busiest airports through the year of 2017.
- Passengers traveled through Abuja airport largely increased from Q2 (577,386 domestic and 692,207 international) to Q3 (841,401 domestic and 231,414 international) due to the reopening of Abuja airport.
- Kaduna airport recorded higher than usual numbers of domestic traffic in the first two quarters of 2017 (124,996 in Q1 and 129,034 in Q2) since a large proportion of air traffic through Abuja was re-directed to Kaduna after Abuja airport's closure in March 2017.
- The annual total number of aircraft arrived at or departed from Nigerian airports in 2017 stood at 214,258 which grew marginally by 0.61% from the same quarter in 2016.
- Cargo movement kept declining since the year of 2014. The annual volume of cargo movement in 2017 -bottomed at 161,800,520 KG (a decline by 17.07% from the annual figure in 2016).
- Abuja international airport recorded the highest year-on-year decline in cargo movement traffic among the five airports (59.21%), followed by declines at Enugu (44.35%), and Lagos (18.19%). Cargo movement at Kano international airport and Port Harcourt international airport in 2017 increased by 20.28% and 17.56% respectively.
- In 2017, the volume of total mail movement in Abuja and Lagos airports in 2017 grew significantly (by 500%) compared with 2016.

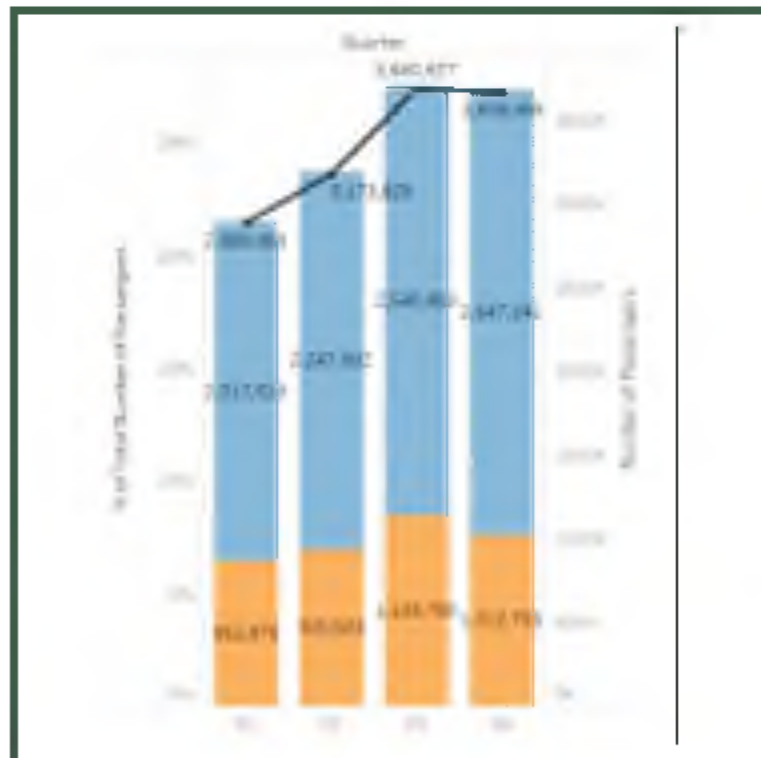
Total Air Passenger Traffic

Overview

In the last quarter of 2017, the total number of passengers who passed through Nigerian airports hit 3,659,999. This quarterly total number grew by 4.89% year-on-year compared with 3,489,317 reported in 2016 Q4 and declined marginally by 0.56% quarter-on-quarter from 3,680,627 as reported in 2017 Q3.

The annual total number of air passengers through Nigeria in 2017 was recorded as 13,394,945, of which 6,693,687 at arrivals and 6,701,258 at departures. The yearly total figure in 2017 fell by 8.03% from a total of 14,564,720 recorded in 2016, mainly due to the six-week closure of Abuja Nnamdi Azikiwe International Airport from March 8th. Although the number of total air passengers at Nigerian airports dropped in the first quarter steeply due to the closure of Abuja airport in March 2017, the figure bounced back in the second quarter and kept growing since then after Abuja airport was reopened on April 18th, 2017. However, the strong performance in the following three quarters could not make up for the loss of passengers in the first quarter at Abuja airport.

Figure 1. Domestic and International Air Passengers from 2017 Q1- Q4

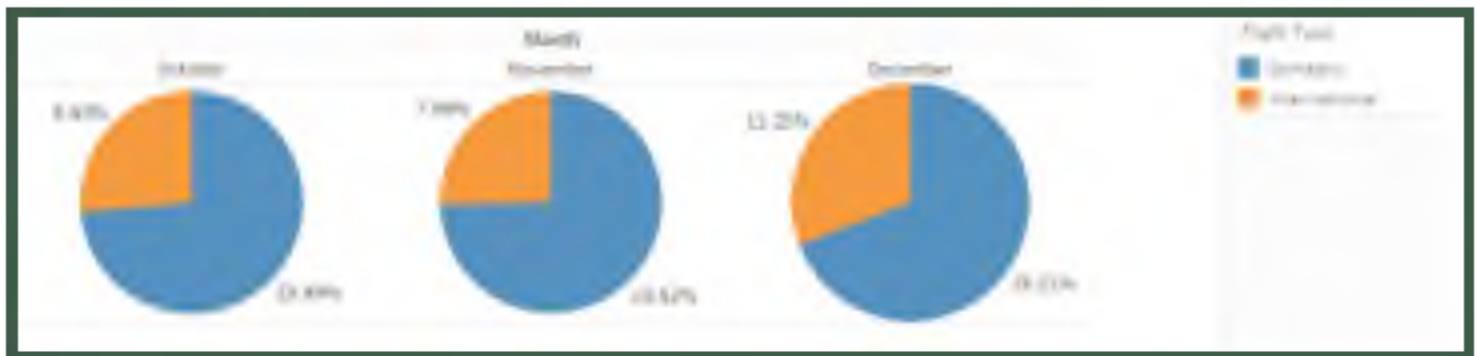


(Blue bars indicate domestic passengers and yellow bars indicate international passengers.)

Domestic and International Passengers

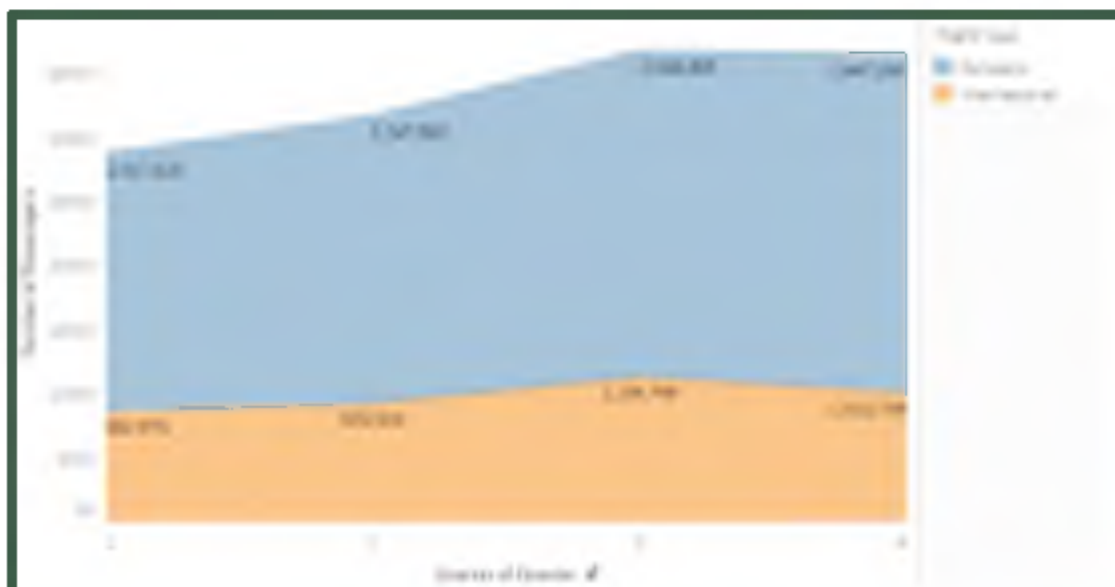
Among the over 3 million passengers who traveled through Nigerian airports in 2017 Q4, 71.60% or 2,538,190 were domestic travelers who were traveling within Nigeria while 28.40% or 1,012,182 were international travelers who were entering or leaving Nigeria. The last quarter of 2017 saw steady growths in the number of both domestic and international travelers of 6.46% and 1.01% respectively. The percentage of international passengers among total air passengers increased by more than 3% in December.

Figure 2. Percentages of Domestic and International Passenger from 2017 Oct.- Dec.



The annual total number of passengers who traveled through Nigerian airports was 13,394,945 which grew by 8.03% from 2016. The numbers of both domestic and international passengers who passed through Nigerian airports kept increasing from the first quarter to the third quarter in 2017. These two figures stood at their highest at 2,545,859 and 1,134,768 in Q3. Annual total numbers of domestic and international air passengers were recorded 9,458,521 and 3,936,424, which grew by 8.40% and 7.15% respectively compared with 2016.

Figure 3. Number of Domestic and International Air Passengers 2017 Q1-Q4

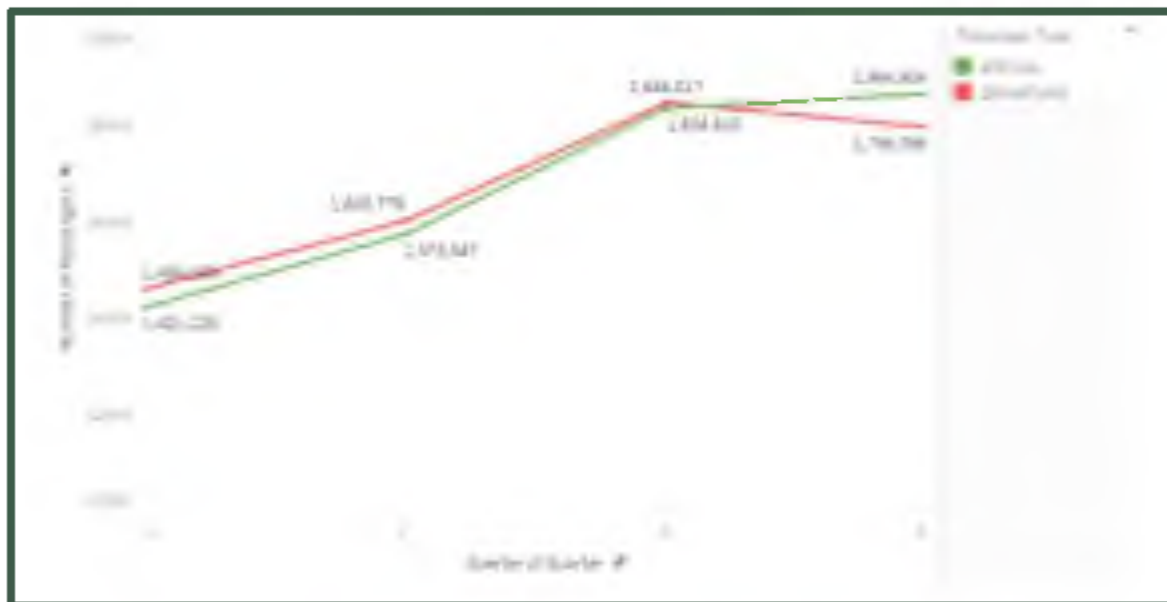


Arrivals and Departures

In 2017 Q4, more arrivals were recorded than departures for both domestic and international travelers for the first time of the year. A total of 1,864,906 passengers were recorded at their arrivals at Nigerian airports (1,338,282 domestic and 526,622 international passengers) which together accounted for 50.95% of the total air passengers, while 1,795,095 passengers were recorded at their departures (1,308,959 domestic and 489,136 international travelers) which accounted for 49.05% of total air passengers in the reviewing quarter.

As for the full year of 2017, departures at Nigerian airports hit the highest-- 1,846,017 in the third quarter and arrivals kept increasing through the year to 1,864,904 in the last quarter. The numbers of departure dropped from the highest in the third quarter to 1,795,095 in the last quarter of the year.

Figure 4. Trends of Passenger Arrivals and Departures 2017 Q1-Q4



Air Traffic by Airport

The top five airports in Nigeria in terms of the number of passengers passed through in 2017 Q4 were in Lagos, Abuja, Port Harcourt, Owerri, and Kano. These five airports served over 92% of total passengers in the reviewing quarter. Lagos Murtala Muhammed International Airport remained the largest airport for both international and domestic travelers. Over 73% of international travelers traveled to or from Lagos and over 38% of domestic travelers traveled to or from Lagos in Q4. Abuja Nnamdi Azikiwe International Airport was the second largest airport in Nigeria, with 32.99% domestic passengers and 32.99% international passengers in Q4.

Figure 5. Numbers of Domestic and International Passenger at Top 10 Airport 2017 Q4



Lagos, Abuja, Port Harcourt, Owerri and Kano airports remained the busiest airports through the year of 2017. Passengers traveled through Abuja airport largely increased from Q2 (577,386 domestic and 692,207 international) to Q3 (841,401 domestic and 231,414 international) due to the reopening of Abuja airport in the second quarter. Kaduna airport recorded higher than usual numbers of domestic traffic in the first two quarters of 2017 (124,996 in Q1 and 129,034 in Q2) since a large proportion of air traffic through Abuja was re-directed to Kaduna after Abuja airport's closure in March 2017. The number of domestic passengers traveled to or from Kaduna dropped to 45,207 in Q3 and further down to 34,772 in Q4.

Figure 6. Numbers of Domestic and International Passenger at Top 10 Airport 2017 Q1-Q4

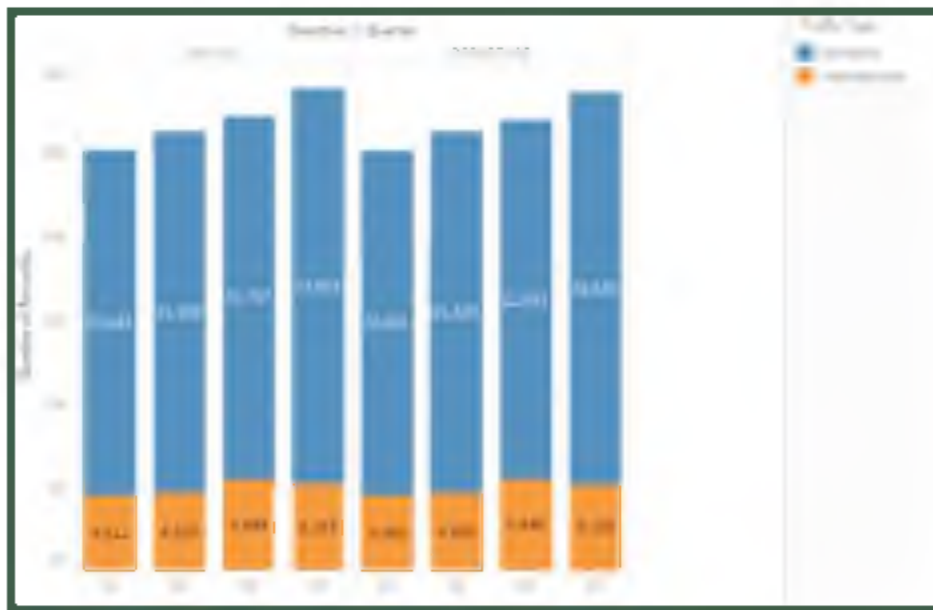
Airport	Flight Type	Quarter			
		Q1	Q2	Q3	Q4
MMIA	Domestic	784,728	859,306	904,216	986,810
	International	663,330	692,207	737,655	739,226
ABUJA	Domestic	500,252	577,386	841,401	839,786
	International	127,137	142,958	231,414	202,496
P.H.	Domestic	189,079	199,001	230,060	244,410
	International	21,110	20,262	22,111	20,217
OWERRI	Domestic	87,908	86,639	111,946	140,661
	International	0	0	0	0
KANO	Domestic	50,402	58,430	66,111	71,256
	International	42,434	60,328	49,530	30,151
KADUNA	Domestic	124,996	129,034	45,207	34,772
	International	0	0	17,482	2,567
ENUGU	Domestic	64,024	64,670	72,276	72,610
	International	8,964	10,168	10,042	11,542
BENIN	Domestic	47,606	57,405	70,506	70,179
	International	0	0	0	0
CALABAR	Domestic	35,077	37,034	43,780	42,030
	International	0	0	0	0
YOLA	Domestic	28,171	32,735	32,342	35,676
	International	0	0	19,065	5,983

Aircraft Movement

In the last quarter of 2017, a total of 57,484 aircraft arrived at or departed from Nigerian airports, among which 47,223 were domestic aircrafts 10,261 were international aircraft accounting for 81.63% and 18.37% of total aircraft respectively. The total number of aircraft departed from or arrived at Nigerian airports increased by 4.56% from 54,960 in the same quarter of 2016 and it increased by 6.20% compared with the figure 54,130 as recorded in the previous quarter in 2017.

The annual total number of aircraft arrived at or departed from Nigerian airports stood at 214,258 in 2017 which grew marginally by 0.61% from the same quarter in 2016. The number of domestic aircraft increased steadily through the four quarters in 2017 and reached 47,223 by the last quarter while the number of international aircraft reached the highest in the third quarter at 10,892.

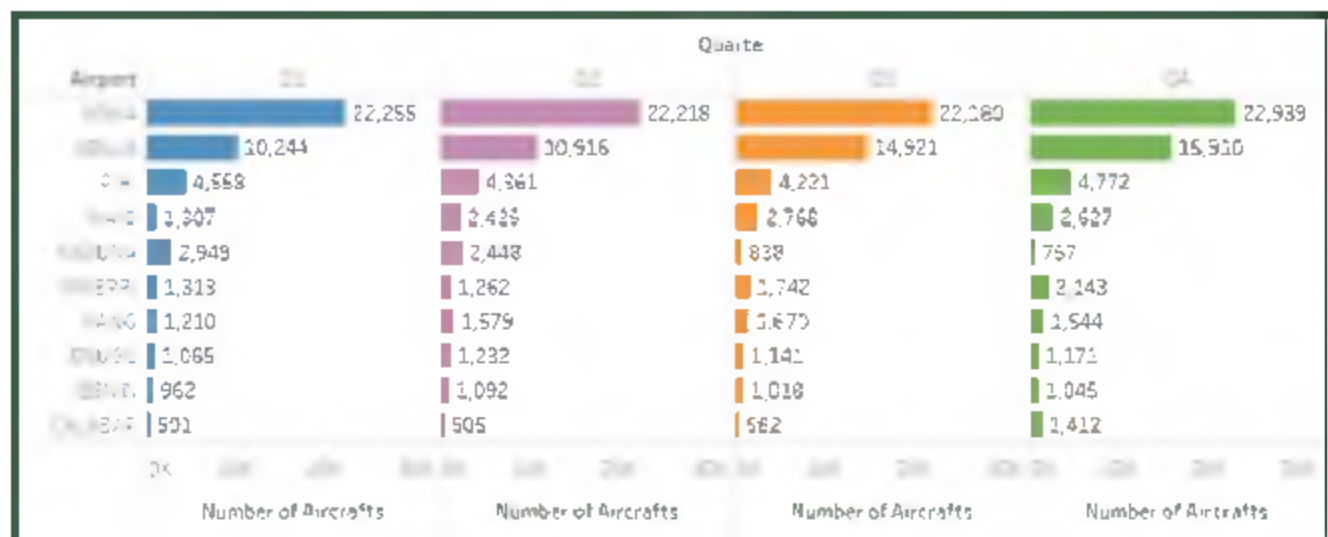
Figure 7. Domestic and International Arrivals and Departures (Aircraft) 2017 Q1- Q4



Aircraft Movement by Airport

The rank of the airport by aircraft movement in all quarters 2017 resembles the rank of the airport by numbers of passengers where Lagos and Abuja carried most of the air traffic. Due to the dominance of Lagos in international travel, the city's status as the commercial capital of Nigeria, and the source of the nearly all foreign investment, Lagos remained the largest hub for aircraft movement in Nigeria. The number of aircraft traveled to or from Lagos increased steadily and hit its highest at 15,910 in the last quarter. The number of aircraft traveled to or from Abuja airport fluctuated slightly during the year.

Figure 8. Aircraft Traffic at Top 10 Airport 2017 Q1-Q4



Cargo Movement

Overview

The last quarter of 2017 recorded 33,425,743 KG cargo movement in Nigerian international airports. The figure shows a year-on-year decline of 41.75% from 57,383,407 KG as recorded in the same quarter of 2016, and a quarter-on-quarter decline by 25.53% compared with 44,883,814 KG in 2017 Q3.

Cargo movement kept declining since the year of 2014. The annual volume of cargo movement in 2017 bottomed at 161,800,520 KG which decreased by 17.07% from the annual figure in 2016.

Cargo Movement by Airport

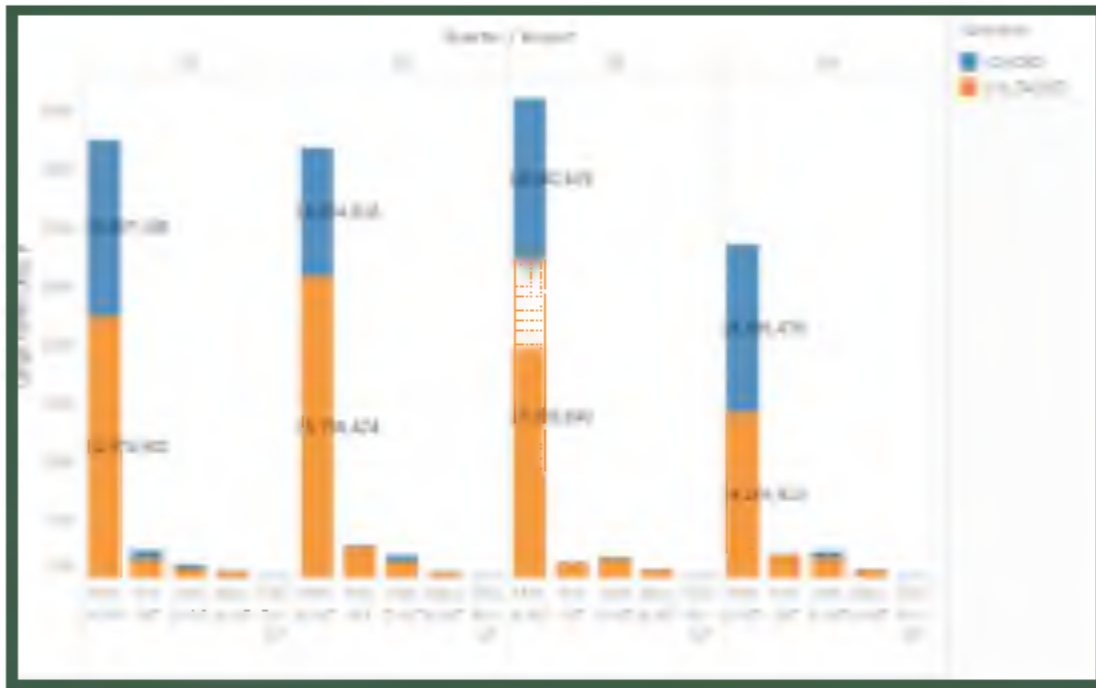
As Lagos remains the commercial hub in Nigeria, Lagos international airport recorded the largest volume of cargo movement in 2017 Q4 although the absolute volume of cargo movement through Lagos airport decreased from Q3. Cargo movement in Lagos in 2017 Q4 recorded its lowest record through the year with a volume of 28503391 KG, accounting for 85.27% of total cargo movement in Nigeria. Cargo movement at Kano, Port Harcourt, Abuja, and Enugu accounted for 6.46%, 5.93%, 2.08% and 0.25% of total cargo movement in the fourth quarter of 2017 respectively.

The volume of cargo movement in Lagos in the fourth quarter of 2017 fell sharply by 40.13% compared with the same quarter in 2016. The volume of cargo movement at Port Harcourt, Abuja, and Enugu declined even more dramatically, by 41.67%, 79.73%, and 83.88% compared with 2016 Q3.

The Q4 figure in Kano international airport also declined year-on-year although more slightly by 10.80%.

The 2017 annual volume of cargo movement in Nigeria also fell from the annual figure of 2016, from 195,106,868 KG (2016) to 161,800,520 KG (2017) by 17.07%. The decline of annual cargo movement in 2017 was mainly caused by the sharp decline in the last quarter at most of the five recorded international airports in Nigeria although the first three quarters saw slight growths at most of the airports. Abuja international airport recorded the highest year-on-year decline among the five airports (59.21%), followed by declines at Enugu (44.35%), and Lagos (18.19%). In contrast, Cargo movement at Kano international airport and Port Harcourt international airport in 2017 increased annually by 20.28% and 17.56% respectively.

Figure 9. Loading and Unloading Cargo Traffic by Airport 2017 Q1-Q4



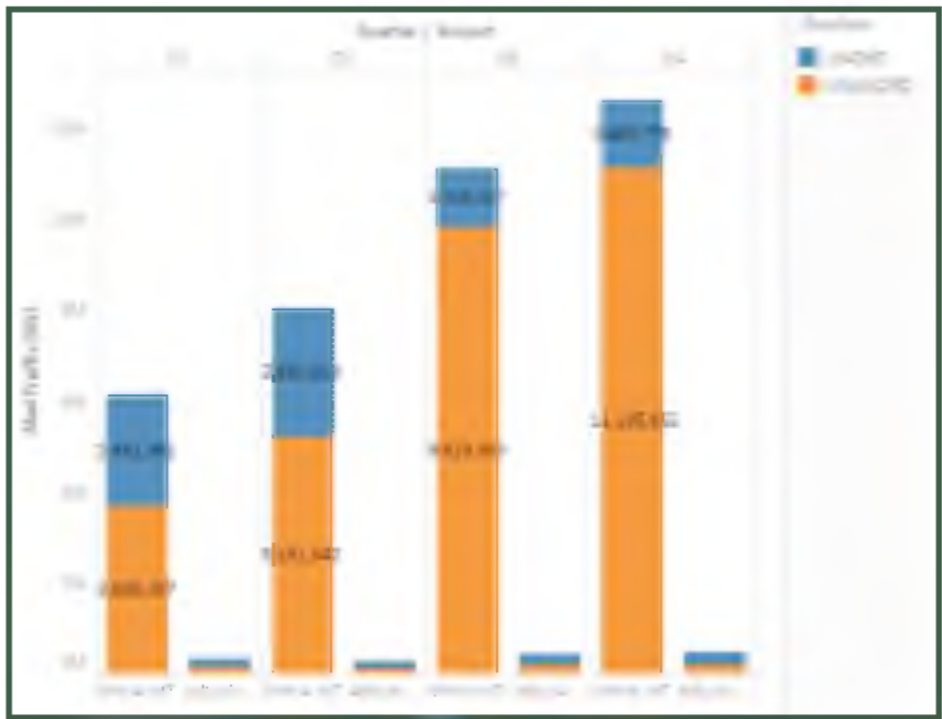
Mail Movement

Mail traffic in Abuja international airport and Lagos international airport was recorded in 2017 by Federal Airports Authority of Nigeria. Lagos international was the airport to account for the majority of mail movement volume in the last quarter of 2017. In 2017 Q4, the weight of mail to move through Lagos was 363,228 kilograms which increased by 255.23% from 2016 Q4. Quarter on quarter, the volume of mail movement through Lagos international airport kept increasing steadily since the first quarter of 2017. By the last quarter in 2017, the volume more than doubled the volume recorded in 2017 Q1.

Abuja international airport also recorded a year-on-year growth in the volume of mail movement, although the growth rate (15.11%) is lower than Lagos. The figure fell from 326,643 in the first quarter to 270,993 in the second quarter, but bounced back to 423,505 in Q3 and further increased to 488,064 in the last quarter of 2017.

Annually, post movement in these two international airports in 2017 grew significantly by 500% from 2016. The volume rose from 6570334 in 2016 to 39445722 in 2017. This strong growth was mainly driven by the growth of mail movement in Lagos international airport which recorded a 624.96% growth rate from 2016.

Figure 10. Loading and Unloading Mail Traffic by Airport 2017 Q1-Q4



(Data in 2017 Q3 and Q4 are yet to be harmonized.)



October



Airport



Arrival



Departure

ABUJA DOM

146,084

145,685

ABUJA INT

33,142

31,826

AKURE DOM

2,679

2,720

BENIN DOM

12,269

12,574

CALABAR DOM

6,854

6,939

CALABAR INT

ENUGU DOM

12,198

12,151

ENUGU INT

1,552

1,627

IBADAN DOM

ILORIN DOM

4,479

4,346

ILORIN INT



October



Airport



Arrival



Departure

Airport	Arrival	Departure
JOS DOM	1,949	1,883
JOS INT	-----	-----
KADUNA DOM	6,564	6,939
KADUNA INT	305	478
SOKOTO DOM	2,145	2,328
SOKOTO INT	559	-----
KANO DOM	11,390	11,679
KANO INT	3,647	3,323
MAID DOM	6,812	6,774
MAID INT	-----	-----
MAKURDI DOM	16	16



October



Airport



Arrival



Departure

MAKURDI INT

MMIA DOM

151,564

153,946

MMIA INT

108,151

111,552

P.H. DOM

38,466

37,695

P.H. INT

3,940

3,786

YOLA DOM

5,528

5,658

YOLA INT

4,651

5

MINNA DOM

59

54

MINNA INT

KATSINA DOM

133

127

KATSINA INT



October



Airport

OWERRI

OSUBI

TOTAL DOM

TOTAL INT

GRAND TOTAL



Arrival

19,282

428,471

155,947

584,418



Departure

19,907

431,421

152,597

584,018



November



Airport



Arrival



Departure

ABUJA DOM

140,298

134,936

ABUJA INT

27,743

25,842

AKURE DOM

2,519

2,577

BENIN DOM

13,204

12,644

CALABAR DOM

7,363

7,552

CALABAR INT

ENUGU DOM

13,869

13,442

ENUGU INT

1,743

1,841

IBADAN DOM

ILORIN DOM

4,174

4,052

ILORIN INT



November



Airport



Arrival



Departure

Airport	Arrival	Departure
JOS DOM	1,813	1,698
JOS INT	-----	-----
KADUNA DOM	6,871	1,698
KADUNA INT	297	365
SOKOTO DOM	2,760	2,718
SOKOTO INT	-----	-----
KANO DOM	12,596	12,220
KANO INT	4,799	4,304
MAID DOM	6,525	6,570
MAID INT	11	6
MAKURDI DOM	32	19



November



Airport



Arrival



Departure

MAKURDI INT

MMIA DOM

159,097

159,164

MMIA INT

114,628

105,769

P.H. DOM

39,928

40,089

P.H. INT

2,738

2,243

YOLA DOM

5,755

5,588

YOLA INT

278

MINNA DOM

322

270

MINNA INT

KATSINA DOM

63

61

KATSINA INT



November



Airport

OWERRI

OSUBI

TOTAL DOM

TOTAL INT

GRAND TOTAL



Arrival

21,674

438,863

151,959

590,822



Departure

20,387

425,685

140,648

566,333



December



Airport



Arrival



Departure

ABUJA DOM

142,317

130,466

ABUJA INT

40,063

43,880

AKURE DOM

1,549

1,497

BENIN DOM

10,337

9,151

CALABAR DOM

7,080

6,242

CALABAR INT

ENUGU DOM

13,155

7,795

ENUGU INT

3,024

1,755

IBADAN DOM

ILORIN DOM

3,803

3,703

ILORIN INT



December



Airport



Arrival



Departure

Airport	Arrival	Departure
JOS DOM	2,411	2,152
JOS INT	-----	-----
KADUNA DOM	6,424	6,276
KADUNA INT	493	629
SOKOTO DOM	2,658	2,651
SOKOTO INT	-----	-----
KANO DOM	11,861	11,510
KANO INT	7,053	7,025
MAID DOM	7,925	7,563
MAID INT	-----	-----
MAKURDI DOM	12	19



December



Airport



Arrival



Departure

MAKURDI INT

MMIA DOM

173,143

189,896

MMIA INT

163,074

136,052

P.H. DOM

44,150

44,082

P.H. INT

4,477

3,033

YOLA DOM

6,944

6,203

YOLA INT

532

517

MINNA DOM

230

185

MINNA INT

KATSINA DOM

KATSINA INT



December



Airport

OWERRI

OSUBI

TOTAL DOM

TOTAL INT

GRAND TOTAL



Arrival

36,949

470,948

218,716

689,664



Departure

22,462

451,853

192,891

644,744

Air Transportation Data - Q4 2017

Passenger Traffic Q4 2017



Q4 2017



Airport



Arrival



Departure



Total



**2016
4th Qtr**



**YoY
Growth**

ABUJA DOM

428,699

411,087

839,786

810,410

3.62

ABUJA INT

100,948

101,548

202,496

200,795

0.85

AKURE DOM

6,747

6,794

13,541

4,112

229.30

BENIN DOM

35,810

34,369

70,179

62,920

11.54

CALABAR DOM

21,297

20,733

42,030

44,212

(4.94)

CALABAR INT

ENUGU DOM

39,222

33,388

72,610

77,134

(5.87)

ENUGU INT

6,319

5,223

11,542

9,253

24.74

IBADAN DOM

16,744

(100.00)

ILORIN DOM

12,456

12,101

24,557

17,993

36.48

ILORIN INT

Air Transportation Data - Q4 2017

Passenger Traffic Q4 2017



Q4 2017



Airport



Arrival



Departure



Total



**2016
4th Qtr**



**YoY
Growth**

JOS DOM

6,173

5,733

11,906

13,210

(9.87)

JOS INT

KADUNA DOM

19,859

14,913

34,772

33,444

3.97

KADUNA INT

1,095

1,472

2,567

2,322

10.55

SOKOTO DOM

7,563

7,697

15,260

13,133

16.20

SOKOTO INT

559

559

3,398

(83.55)

KANO DOM

35,847

35,409

71,256

60,109

18.54

KANO INT

15,499

14,652

30,151

32,261

(6.54)

MAID DOM

21,262

20,907

42,169

30,203

39.62

MAID INT

11

6

17

3,936

(99.57)

MAKURDI DOM

60

54

114

Air Transportation Data - Q4 2017

Passenger Traffic Q4 2017



Q4 2017



Airport



Arrival



Departure



Total



**2016
4th Qtr**



**YoY
Growth**

MAKURDI INT

MMIA DOM

483,804

503,006

986,810

909,851

8.46

MMIA INT

385,853

353,373

739,226

721,181

2.50

P.H. DOM

122,544

121,866

244,410

209,366

16.74

P.H. INT

11,155

9,062

20,217

21,510

(6.01)

YOLA DOM

18,227

17,449

35,676

35,465

0.59

YOLA INT

5,183

800

5,983

2,677

MINNA DOM

611

509

1,120

1,165

(3.86)

MINNA INT

2,318

KATSINA DOM

196

188

384

1,268

(69.72)

KATSINA INT

2,962



Q4 2017



Airport



Arrival



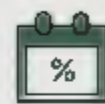
Departure



Total



**2016
4th Qtr**



**YoY
Growth**

OWERRI

77,905

62,756

140,661

104,248

34.93

OSUBI

41,717

(100.00)

TOTAL DOM

1,338,282

1,308,959

2,647,241

2,486,704

6.46

TOTAL INT

526,622

486,136

1,012,758

1,002,613

1.01

GRAND TOTAL

1,864,904

1,795,095

3,659,999

3,489,317

4.89



Passenger Traffic 2017



2017



Airport



Arrival



Departure



**2017
Grand Total**



**2016
Grand Total**



**YoY
Growth**

ABUJA DOM

1,396,526

1,362,299

2,758,825

3,344,164

(17.50)

ABUJA INT

354,541

349,464

704,005

885,926

(20.53)

AKURE DOM

12,559

12,715

25,274

9,873

155.99

BENIN DOM

122,691

123,205

245,896

197,690

24.38

CALABAR DOM

78,170

79,751

157,921

202,780

(22.12)

CALABAR INT

ENUGU DOM

137,053

136,527

273,580

340,692

(19.70)

ENUGU INT

19,355

21,361

40,716

38,200

6.59

IBADAN DOM

19,573

19,149

38,722

70,797

(45.31)

ILORIN DOM

41,923

41,084

83,007

74,721

11.09

ILORIN INT

2,964

2,960

5,924

4,982

18.91



Passenger Traffic 2017



2017



Airport



Arrival



Departure



**2017
Grand Total**



**2016
Grand Total**



**YoY
Growth**

JOS DOM

25,128

22,867

47,995

58,990

(18.64)

JOS INT

KADUNA DOM

171,946

162,063

334,009

127,233

162.52

KADUNA INT

9,700

10,349

20,049

14,588

37.43

SOKOTO DOM

31,031

30,735

61,766

77,867

(20.68)

SOKOTO INT

10,211

8,372

18,583

19,357

(4.00)

KANO DOM

124,374

121,825

246,199

255,568

(3.67)

KANO INT

90,889

91,654

182,543

202,589

(9.89)

MAID DOM

71,786

72,130

143,916

110,613

30.11

MAID INT

484

3,606

4,090

11,318

(63.86)

MAKURDI DOM

109

103

212



Passenger Traffic 2017



2017



Airport



Arrival



Departure



**2017
Grand Total**



**2016
Grand Total**



**YoY
Growth**

MAKURDI INT

MMIA DOM

1,755,704

1,779,356

3,535,060

3,748,833

(5.70)

MMIA INT

1,392,647

1,439,771

2,832,418

2,945,914

(3.85)

P.H. DOM

433,678

428,872

862,550

974,028

(11.45)

P.H. INT

40,490

43,210

83,700

91,499

(8.52)

YOLA DOM

64,515

64,409

128,924

153,160

(15.82)

YOLA INT

14,865

10,184

25,049

8,077

210.13

MINNA DOM

8,378

3,767

12,145

2,529

380.23

MINNA INT

4,926

5,043

9,969

6,015

65.74

KATSINA DOM

1,167

2,051

3,218

3,576

(10.01)

KATSINA INT

5,017

4,361

9,378

10,206

(8.11)



Passenger Traffic 2017



2017



Airport



Arrival



Departure



**2017
Grand Total**



**2016
Grand Total**



**YoY
Growth**

OWERRI

217,448

211,766

429,214

369,802

16.07

OSUBI

33,839

36,249

70,088

203,133

(65.50)

TOTAL DOM

4,747,598

4,710,923

9,458,521

10,326,049

(8.40)

TOTAL INT

1,946,089

1,990,335

3,936,424

4,238,671

(7.13)

GRAND TOTAL

6,693,687

6,701,258

13,394,945

14,564,720

(8.03)



October



Airport



Arrival



Departure

Airport	Arrival	Departure
ABUJA DOM	2,386	2,364
ABUJA INT	417	414
AKURE DOM	82	82
BENIN DOM	189	188
CALABAR DOM	93	93
CALABAR INT	----	----
ENUGU DOM	181	177
ENUGU INT	13	13
IBADAN DOM	101	101
ILORIN DOM	139	139
ILORIN INT	----	----



October



Airport



Arrival



Departure

JOS DOM

42

42

JOS INT

KADUNA DOM

114

101

KADUNA INT

18

19

SOKOTO DOM

49

49

SOKOTO INT

KANO DOM

177

177

KANO INT

70

70

MAID DOM

480

487

MAID INT

MAKURDI DOM



October



Airport



Arrival



Departure

MAKURDI INT

MMIA DOM

2,754

2,764

MMIA INT

1,170

1,186

P.H. DOM

822

729

P.H. INT

56

57

YOLA DOM

83

83

YOLA INT

0

0

MINNA DOM

19

19

MINNA INT

KATSINA DOM

22

22

KATSINA INT



October



Airport

OWERRI

OSUBI

TOTAL DOM

TOTAL INT

GRAND TOTAL



Arrival

276

8,009

1,744

9,753



Departure

276

7,893

1,759

9,652



November



Airport



Arrival



Departure

Airport	Arrival	Departure
ABUJA DOM	2,195	2,195
ABUJA INT	248	218
AKURE DOM	75	75
BENIN DOM	186	186
CALABAR DOM	137	103
CALABAR INT	----	----
ENUGU DOM	217	216
ENUGU INT	13	13
IBADAN DOM	103	101
ILORIN DOM	138	136
ILORIN INT	----	----



November



Airport



Arrival



Departure

JOS DOM

47

47

JOS INT

KADUNA DOM

116

116

KADUNA INT

11

12

SOKOTO DOM

68

68

SOKOTO INT

KANO DOM

182

180

KANO INT

53

51

MAID DOM

422

428

MAID INT

10

9

MAKURDI DOM



November



Airport



Arrival



Departure

MAKURDI INT

MMIA DOM

2,638

2,649

MMIA INT

1,192

1,197

P.H. DOM

715

710

P.H. INT

47

47

YOLA DOM

89

89

YOLA INT

MINNA DOM

30

30

MINNA INT

KATSINA DOM

28

28

KATSINA INT



November



Airport

OWERRI

OSUBI

TOTAL DOM

TOTAL INT

GRAND TOTAL



Arrival

371

7,757

1,574

9,331



Departure

371

7,728

1,574

9,275



December



Airport



Arrival



Departure

Airport	Arrival	Departure
ABUJA DOM	2,287	2,277
ABUJA INT	459	450
AKURE DOM	52	52
BENIN DOM	149	147
CALABAR DOM	497	489
CALABAR INT	-----	-----
ENUGU DOM	152	152
ENUGU INT	12	12
IBADAN DOM	82	83
ILORIN DOM	138	136
ILORIN INT	111	110



December



Airport

JOS DOM

JOS INT

KADUNA DOM

KADUNA INT

SOKOTO DOM

SOKOTO INT

KANO DOM

KANO INT

MAID DOM

MAID INT

MAKURDI DOM



Arrival

51

113

14

53

219

73

395



Departure

51

108

15

53

222

70

396



December



Airport



Arrival



Departure

MAKURDI INT

MMIA DOM

2,472

2,487

MMIA INT

1,227

1,203

P.H. DOM

742

751

P.H. INT

47

49

YOLA DOM

90

90

YOLA INT

3

3

MINNA DOM

27

27

MINNA INT

KATSINA DOM

KATSINA INT



December



Airport

OWERRI

OSUBI

TOTAL DOM

TOTAL INT

GRAND TOTAL



Arrival

425

7,917

1,835

9,752



Departure

424

7,919

1,802

9,721



Aircraft Traffic Q4 2017



Q4 2017



Airport



Arrival



Departure



Total



**2016
4th Qtr**



**YoY
Growth**

ABUJA DOM

6,868

6,836

13,704

12,764

6.86

ABUJA INT

1,124

1,082

2,206

2,263

(2.58)

AKURE DOM

209

209

418

310

25.84

BENIN DOM

524

521

1,045

1,174

(12.34)

CALABAR DOM

727

685

1,412

642

54.53

CALABAR INT

ENUGU DOM

550

545

1,095

1,244

(13.61)

ENUGU INT

38

38

76

116

(52.63)

IBADAN DOM

286

285

571

524

8.23

ILORIN DOM

388

385

773

725

6.21

ILORIN INT



Aircraft Traffic Q4 2017



Q4 2017



Airport



Arrival



Departure



Total



**2016
4th Qtr**



**YoY
Growth**

JOS DOM

140

140

280

241

13.93

JOS INT

KADUNA DOM

343

325

668

1,020

(52.69)

KADUNA INT

43

46

89

12

86.52

SOKOTO DOM

170

170

340

468

(37.65)

SOKOTO INT

13

KANO DOM

578

579

1,157

942

18.58

KANO INT

196

191

387

421

(8.79)

MAID DOM

1,297

1,311

2,608

1,875

28.11

MAID INT

10

9

19

48

(152.63)

MAKURDI DOM

Air Transportation Data - Q4 2017



Aircraft Traffic Q4 2017



Q4 2017



Airport



Arrival



Departure



Total



**2016
4th Qtr**



**YoY
Growth**

MAKURDI INT

MMIA DOM

7,864

7,900

15,764

15,491

1.73

MMIA INT

3,589

3,586

7,175

6,913

3.65

P.H. DOM

2,279

2,190

4,469

3,529

21.03

P.H. INT

150

153

303

482

(59.08)

YOLA DOM

262

262

524

781

(49.05)

YOLA INT

3

3

6

15

MINNA DOM

76

76

152

90

40.79

MINNA INT

7

KATSINA DOM

50

50

100

187

(87.00)

KATSINA INT

8



Aircraft Traffic Q4 2017



Q4 2017



Airport



Arrival



Departure



Total



**2016
4th Qtr**



**YoY
Growth**

OWERRI

1,072

1,071

2,143

1,431

33.22

OSUBI

1,220

TOTAL DOM

23,683

23,540

47,223

44,658

5.43

TOTAL INT

5,153

5,108

10,261

10,202

0.57

GRAND TOTAL

28,836

28,648

57,484

54,860

4.56



Aircraft Traffic 2017



2017



Airport



Arrival



Departure



**2017
Grand Total**



**2016
Grand Total**



**YoY
Growth**

ABUJA DOM

22,223

22,229

44,452

41,548

6.99

ABUJA INT

3,804

3,735

7,539

9,269

(18.66)

AKURE DOM

585

581

1,166

835

39.64

BENIN DOM

2,063

2,054

4,117

3,738

10.14

CALABAR DOM

1,520

1,480

3,000

3,172

(5.42)

CALABAR INT

ENUGU DOM

2,162

2,131

4,293

5,185

(17.20)

ENUGU INT

159

157

316

381

(17.06)

IBADAN DOM

998

990

1,988

2,026

(1.88)

ILORIN DOM

1,391

1,385

2,776

2,873

(3.38)

ILORIN INT

17

17

34

20

70.00



Aircraft Traffic 2017



2017



Airport



Arrival



Departure



**2017
Grand Total**



**2016
Grand Total**



**YoY
Growth**

JOS DOM

488

487

975

977

(0.20)

JOS INT

KADUNA DOM

3,424

3,371

6,795

3,719

82.71

KADUNA INT

104

93

197

80

146.25

SOKOTO DOM

751

741

1,492

1,885

(20.85)

SOKOTO INT

30

32

62

73

(15.07)

KANO DOM

2,061

2,049

4,110

4,772

(13.87)

KANO INT

948

945

1,893

2,145

(11.75)

MAID DOM

4,555

4,521

9,076

5,186

75.01

MAID INT

28

23

51

160

(68.13)

MAKURDI DOM

6

6

12



Aircraft Traffic 2017



2017



Airport



Arrival



Departure



**2017
Grand Total**



**2016
Grand Total**



**YoY
Growth**

MAKURDI INT

MMIA DOM

30,861

31,154

62,015

61,342

1.10

MMIA INT

13,844

13,733

27,577

28,978

(4.83)

P.H. DOM

8,369

7,925

16,294

17,335

(6.01)

P.H. INT

750

868

1,618

2,134

(24.18)

YOLA DOM

1,124

1,118

2,242

3,324

(32.55)

YOLA INT

24

24

48

45

6.67

MINNA DOM

457

451

908

271

235.06

MINNA INT

11

11

22

31

(29.03)

KATSINA DOM

251

248

499

616

(18.99)

KATSINA INT

9

9

18

23

(21.74)



Aircraft Traffic 2017



2017



Airport



Arrival



Departure



**2017
Grand Total**



**2016
Grand Total**



**YoY
Growth**

OWERRI

3,233

3,227

6,460

5,585

15.67

OSUBI

1,159

1,154

2,313

5,331

(56.61)

TOTAL DOM

87,681

87,302

174,983

169,720

3.10

TOTAL INT

19,728

19,647

39,375

43,339

(9.15)

GRAND TOTAL

107,409

106,949

214,358

213,059

0.61



October



Airport



Unloaded



loaded

ABUJA INT

187,431

ENUGU INT

3,657

2,487

KANO INT

473,114

1,203

MMIA INT

8,419,027

751

P.H. DOM

P.H. INT

844,473

10,578

TOTAL

9,927,702

5,178,627



November



Airport



Unloaded



loaded

ABUJA INT

183,216

42,318

ENUGU INT

61,271

KANO INT

628,157

224,496

MMIA INT

985,582

4,582,978

P.H. DOM

P.H. INT

260,461

13,369

TOTAL

2,057,416

4,924,432



December



Airport



Unloaded



loaded

ABUJA INT

197,207

54,224

ENUGU INT

12,416

KANO INT

550,636

169,285

MMIA INT

4,702,304

4,798,826

P.H. DOM

P.H. INT

836,758

15,911

TOTAL

6,286,905

5,050,662

Air Transportation Data - Q4 2017

Cargo Traffic (KG) Q4 2017



Q4 2017



Airport



Unloaded



Loaded



Total



**2016
4th Qtr**



**YoY
Growth**

ABUJA INT

567,854

128,585

696,439

3,436,303

(80)

ENUGU INT

3,657

80,946

84,603

524,701

(84)

KANO INT

1,651,908

507,854

2,159,761

2,415,295

(11)

MMIA INT

14,106,913

14,396,478

28,503,391

47,609,805

(40)

P.H. DOM

P.H. INT

1,941,692

39,858

1,981,550

3,397,303

(42)

TOTAL

18,272,023

15,153,721

33,425,744

57,383,407

(42)



Cargo Traffic (KG) 2017



2017



Airport



Unloaded



Loaded



Grand Total



**2016
Grand Total**



**YoY
Growth**

ABUJA INT

1,995,257

317,461

2,312,718

5,670,457

(59.21)

ENUGU INT

164,311

309,389

473,700

851,188

(44.35)

KANO INT

5,252,758

1,612,694

6,865,452

5,707,968

20.28

MMIA INT

89,649,078

54,109,091

143,758,169

175,740,102

(18.20)

P.H. INT

7,324,481

1,066,000

8,390,481

7,137,153

17.56

TOTAL

104,385,885

57,414,635

161,800,520

195,106,868

(17.07)

Air Transportation Data - Q4 2017

Mail Traffic (KG) Q4 2017



October



Airport

ABUJA INT

MMIA INT

TOTAL



Unloaded

57,306

2,569,691

2,626,997



loaded

101,215

403,040

504,255



November



Airport

ABUJA INT

MMIA INT

TOTAL



Unloaded

58,046

4,854,084

4,912,130



loaded

88,216

584,145

672,361



December



Airport

ABUJA INT

MMIA INT

TOTAL



Unloaded

62,213

3,711,887

3,774,100



loaded

121,068

493,593

614,661

Air Transportation Data - Q4 2017



Mail Traffic (KG) Q4 2017



Q4 2017



Airport



Unloaded



Loaded



Grand Total



**2016
4th Qtr**



**YoY
Growth**

ABUJA INT

177,565

310,499

488,064

424,007

15.11

MMIA INT

11,135,662

1,480,778

12,616,439

3,551,663

255.23

TOTAL

11,313,227

1,791,277

13,104,503

3,975,670

229.62



2017



Airport



Unloaded



Loaded



Grand Total



**2016
Grand Total**



**YoY
Growth**

ABUJA INT

621,597

887,608

1,509,205

1,337,430

13

MMIA INT

29,835,349

8,101,169

37,936,517

5,232,905

625

TOTAL

30,456,946

8,988,777

39,445,722

6,570,335

500

Methodology

Data is supplied administratively by the Federal Airports Authority of Nigeria (FAAN) and verified and validated by the National Bureau of Statistics, Nigeria (NBS).

PASSENGER TRAFFIC FIRST QUARTER 2017

AIRPORT	JANUARY		FEBRUARY		MARCH		TOTAL Q1 2017		GRAND TOTAL Q1 2017	2016 1ST QTR	Year-on-Year Growth
	ARRIVAL	DEPARTURE	ARRIVAL	DEPARTURE	ARRIVAL	DEPARTURE	ARRIVAL	DEPARTURE			
ADUJA DOM	113,430	101,514	109,426	108,233	33,070	34,579	255,926	244,326	500,252	847,301	(40.96)
INT	34,610	31,769	22,842	24,097	6,795	7,024	64,247	62,890	127,137	216,204	(41.20)
AKURE DOM	312	307	564	755	156	151	1,032	1,213	2,245	646	246.45
BENIN DOM	7,089	7,217	7,817	7,597	8,975	9,111	23,881	23,925	47,806	45,772	4.44
CALABAR DOM	5,042	6,256	5,701	5,714	6,075	6,289	16,818	18,254	35,072	56,691	(38.13)
INT											
ENIGUN DOM	9,341	14,126	10,821	10,758	9,463	9,515	29,625	34,399	64,024	96,975	(33.98)
INT	1,355	2,298	776	1,308	1,322	1,905	3,453	5,511	8,964	9,278	(3.38)
IBADAN DOM	1,524	1,512	2,003	1,889	1,509	1,548	5,036	4,949	9,985	18,355	(45.60)
LORIN DOM	2,409	2,072	2,465	2,409	1,966	2,103	6,840	6,584	13,424	19,525	(31.25)
INT											
KOSOFI DOM	1,335	1,130	1,518	1,306	2,254	1,780	5,107	4,216	9,323	12,709	(26.64)
INT											
KADUNA DOM	4,127	4,138	4,266	4,396	55,387	52,682	63,760	61,216	124,996	22,308	460.32
INT										320	(100.00)
SOKOTO DOM	1,015	761	1,686	1,604	2,478	2,388	5,179	4,753	9,932	21,116	(52.96)
INT											
KARU DOM	8,304	7,902	8,815	8,780	8,717	7,884	25,836	24,566	50,402	61,488	(10.61)
INT	7,585	5,791	6,075	6,881	8,088	8,014	21,748	20,686	42,434	46,603	(8.95)
MAIDOM DOM	4,922	4,990	4,297	4,416	4,383	4,438	13,602	13,844	27,446	24,362	12.66
INT										110	(100.00)
MAKURDI DOM											
INT											
MMA DOM	130,972	128,148	131,041	130,313	132,769	131,485	394,782	389,946	784,728	463,359	(18.54)
INT	115,451	114,034	88,786	101,767	108,234	117,158	312,371	350,959	663,330	741,370	(10.54)
PHI DOM	30,433	32,154	31,794	31,499	31,690	31,312	93,925	95,164	189,079	273,240	(30.80)
INT	3,632	5,667	2,443	3,092	3,187	3,089	9,262	11,848	21,110	23,612	(10.60)
YOLA DOM	4,606	5,185	3,979	4,265	4,942	5,194	13,527	14,644	28,171	40,718	(30.81)
INT											
MINNA DOM	297	255	347	118	285	266	729	639	1,368	-	
INT											
KATINA DOM	115	128	47	51	88	81	250	260	510	624	(18.27)
INT											
OWERRI DOM	13,485	21,847	13,993	14,436	12,030	12,117	39,508	48,400	87,908	80,189	9.63
OSUFI DOM	5,439	5,959	4,318	4,718	4,915	5,494	14,672	16,171	30,843	46,217	(33.26)
TOTAL DOM	344,197	345,599	344,696	343,257	321,152	318,618	1,010,045	1,007,474	2,017,519	2,633,597	(23.39)
TOTAL INT	162,533	177,559	120,922	137,145	127,626	137,190	411,081	451,894	862,975	1,037,497	(16.82)
GRAND TOTAL	506,730	523,158	465,618	480,402	448,778	455,808	1,421,126	1,459,368	2,880,494	3,671,094	(21.54)

AIRCRAFT TRAFFIC FIRST QUARTER 2017

AIRPORT	JANUARY		FEBRUARY		MARCH		TOTAL		GRAND TOTAL Q1 2017	2016 1ST QTR GRAND TOTAL	Year-on-Year Growth
	ARRIVAL	DEPARTURE	ARRIVAL	DEPARTURE	ARRIVAL	DEPARTURE	ARRIVAL	DEPARTURE			
ABUJA DOM	1,956	1,966	1,850	1,857	569	601	4,375	4,424	8,799	2,329	277.80
INT	357	346	285	284	88	85	730	715	1,445	2,329	(37.56)
AKURE	31	31	65	61	25	26	121	118	239	128	86.72
BENIN	144	143	149	145	190	191	483	479	962	767	25.42
CA. ABAR DOM	77	78	78	78	95	95	250	251	501	909	(44.88)
INT							-	-	-	-	
ENJUGU	183	180	159	156	160	162	502	498	1,000	1,518	(34.12)
			17	18	15	15	32	33	65	78	(16.67)
IBADAN	67	63	60	57	89	89	216	209	425	497	(14.49)
ILOFIN DOM	97	97	93	92	110	109	300	298	598	743	(19.52)
INT							-	-	-	-	
IOS	28	28	34	33	69	69	131	130	261	239	9.21
INT											
IADUNA DOM	137	139	161	156	1,181	1,175	1,479	1,470	2,949	821	259.20
INT							-	-	-	14	(100.00)
SOPOKO DOM	38	36	53	53	84	78	175	167	342	503	(32.01)
INT							-	-	-	-	
KANO DOM	134	124	133	133	155	152	422	409	831	1,260	(34.05)
INT	65	64	58	58	67	67	190	189	379	507	(25.25)
MAID DOM	377	327	300	303			677	630	1,307	963	35.72
INT							-	-	-	22	(100.00)
MAKURDI											
INT											
NMBA DOM	2,491	2,539	2,506	2,531	2,777	2,776	7,774	7,846	15,620	15,400	1.43
INT	1,150	1,132	1,017	994	1,187	1,155	3,354	3,281	6,635	7,619	(12.92)
PH DOM	683	668	667	642	723	705	2,073	2,015	4,088	5,117	(20.11)
INT	76	96	61	81	68	88	205	265	470	431	9.05
YOLA DOM	127	125	83	83	116	115	326	323	649	857	(24.27)
INT							-	-	-	-	
MINNA DOM	30	26	24	27	59	60	113	113	226	-	
INT							-	-	-	-	
PASSINA	21	22	14	14	11	11	46	47	93	108	(13.89)
INT							-	-	-	-	
OWERRI	253	252	216	214	189	189	658	655	1,313	1,440	(8.82)
OSUFI	190	186	152	151	182	182	524	519	1,043	1,287	(18.96)
TOTAL DOM	7,064	7,030	6,797	6,786	6,784	6,785	20,645	20,601	41,246	34,886	18.23
TOTAL INT	1,648	1,638	1,438	1,435	1,425	1,420	4,511	4,483	8,994	11,000	(18.24)
GRAND TOTAL	8,712	8,668	8,235	8,221	8,209	8,195	25,156	25,084	50,240	45,886	9.49

CARGO TRAFFIC (KG) FIRST QUARTER 2017

AIRPORT	JANUARY		FEBRUARY		MARCH		TOTAL		GRAND	2016 1ST QTR	Year-on-Year Growth
	UNLOADED	LOADED	UNLOADED	LOADED	UNLOADED	LOADED	UNLOADED	LOADED	TOTAL Q1 2017	GRAND TOTAL	
ABUJA INT	220,141	24,211	189,773	19,561	52,075	16,384	461,989	60,156	522,145	582,301	(10.33)
ENUGU INT	3,221	14,827	69,589	21,786	6,811	25,645	79,621	62,258	141,879	-	
KANO INT	264,243.10	74,525.50	216,185.10	203,788.00	266,572.10	37,686.40	747,000	316,000	1,063,000	1,772,842	(40.04)
MMABINT	7,443,657.66	5,125,111.00	6,368,638.87	4,554,399.00	8,563,605.26	5,387,658.00	22,375,902	15,067,168	37,443,070	38,550,377	(2.87)
PHC INT	854,797	9,334	3,929	730,160	677,984	11,275	1,536,710	750,769	2,287,479	1,163,551	96.59
TOTAL INT	8,786,060	5,248,009	6,848,114	5,529,694	9,567,047	5,478,648	25,201,222	16,256,351	41,457,573	42,311,777	(2.02)

MAIL TRAFFIC (KG) FIRST QUARTER 2017

AIRPORT	JANUARY		FEBRUARY		MARCH		TOTAL		GRAND	GRAND TOTAL	Year-on-Year Growth
	UNLOADED	LOADED	UNLOADED	LOADED	UNLOADED	LOADED	UNLOADED	LOADED	TOTAL Q1 2017	2016 1ST QTR	
ABUJA INT	58,017	88,112	55,346	74,326	29,583	21,259	142,946.0	187,697.0	326,643.0	237,875	37.33
KANO DOM							-	-	-	4,469	100.00
INT	926,685	810,398	1,033,326	749,689	1,728,196	891,274	3,688,206.6	2,451,361.3	6,139,567.9	363,228	1,590.28
TOTAL INT	984,702.0	898,510.3	1,088,672.0	824,015.0	1,757,778.6	912,533.0	3,831,152.6	2,635,058.3	6,466,210.9	605,572.0	967.8

PASSENGER TRAFFIC SECOND QUARTER 2017

AIRPORT	APRIL		MAY		JUNE		TOTAL		GRAND TOTAL Q2 2017	2016 2ND QTR GRAND TOTAL	Year on-Year Growth
	ARRIVAL	DEPARTURE	ARRIVAL	DEPARTURE	ARRIVAL	DEPARTURE	ARRIVAL	DEPARTURE			
ABUJA DOM	45,128	45,096	127,033	125,374	125,048	116,707	290,209	287,277	577,486	863,711	(33.1%)
INT	12,119	11,357	30,036	29,490	30,446	29,533	72,603	70,355	142,958	206,695	(31.7%)
AKURE DOM	191	193	506	516	476	458	1,175	1,097	2,272	1,234	1.2%
AKURE INT	8,769	8,823	9,835	10,028	9,914	10,036	18,548	18,887	37,435	46,380	21.3%
CALABAR DOM	5,942	6,085	6,576	6,609	5,718	6,104	18,236	18,798	37,034	52,236	(29.1%)
INT											
ENUGU DOM	10,508	10,385	10,946	11,507	10,821	10,503	32,275	32,395	64,670	86,184	(25.1%)
ENUGU INT	1,939	1,820	1,497	1,865	1,461	1,566	4,897	5,271	10,168	10,217	(0.5%)
IHAJAN DOM	1,838	1,984	2,606	2,300	1,771	2,747	7,245	7,031	14,276	17,106	(16.9%)
IHAJAN INT	2,598	2,429	3,655	3,882	3,070	3,327	9,323	9,638	18,961	19,021	(1.6%)
INT											
LOS DOM	2,560	2,407	2,727	2,426	2,358	2,173	7,645	7,106	14,751	16,717	(12.3%)
INT											
KADUNA DOM	50,268	48,961	7,286	6,828	7,913	7,778	65,467	63,567	129,034	34,502	273.9%
INT										135	(100.0%)
SOOKO DOM	2,528	2,485	4,103	4,067	4,963	3,021	8,594	8,573	17,167	22,544	(24.3%)
INT										216	(100.0%)
KANO DOM	9,504	10,525	10,881	10,344	9,556	7,418	29,743	28,687	58,430	62,187	(5.7%)
INT	8,462	11,482	7,773	9,304	9,973	13,147	26,206	34,124	60,330	57,274	(5.2%)
MAIDOM	4,722	5,008	6,198	6,160	5,724	5,340	16,644	16,508	33,152	37,122	(10.7%)
INT										31	(100.0%)
MAKURDI DOM											
INT											
MMA DOM	143,423	143,664	149,723	149,727	135,267	139,612	428,413	422,993	851,406	964,644	(11.3%)
INT	119,428	125,980	111,442	120,568	105,320	109,470	336,149	356,028	692,177	719,986	(3.7%)
PH. DOM	32,340	32,125	34,793	32,857	33,687	33,199	100,820	98,181	199,001	258,277	(22.6%)
INT	1,459	1,815	1,180	1,541	1,993	1,174	9,642	10,630	20,272	21,444	(5.9%)
PORT HARCOURT DOM	5,486	5,633	5,660	6,254	4,843	4,861	15,987	16,748	32,735	39,425	(16.5%)
INT											
MINNA DOM	947	1,007	862	938	15	23	1,816	1,968	3,784	579	653.7%
INT											
KATSINA DOM	142	141	160	184	54	62	456	488	944	707	33.1%
INT											
OWERRI DOM	15,397	14,752	14,551	15,795	14,058	14,145	44,007	44,692	88,699	94,128	(5.8%)
OSOGUN DOM	5,225	5,844	6,669	7,021	7,073	7,213	29,167	30,078	59,245	54,412	(10.8%)
TOTAL DOM	348,618	347,947	403,574	401,806	371,328	374,629	1,123,520	1,124,382	2,247,902	2,688,800	(16.4%)
TOTAL INT	145,407	154,469	153,927	164,867	150,193	157,060	449,527	476,396	925,923	1,035,822	(10.6%)
GRAND TOTAL	494,025	502,416	557,501	566,673	521,521	531,689	1,573,047	1,600,778	3,173,825	3,724,622	(14.7%)

SOURCE: FAAN QUARTERLY STATISTICS

AIRCRAFT TRAFFIC SECOND QUARTER 2017

AIRPORT	APRIL		MAY		JUNE		TOTAL		GRAND TOTAL	2016 2ND QTR GRAND TOTAL	Year-on-Year Growth
	ARRIVAL	DEPARTURE	ARRIVAL	DEPARTURE	ARRIVAL	DEPARTURE	ARRIVAL	DEPARTURE			
ABUJA DOM	741	727	2,037	2,068	1,947	2,478	4,725	4,733	9,458	13,862	(26.56)
INT	119	106	312	311	302	108	733	745	1,458	4,478	(69.10)
AKURE DOM	26	26	58	58	31	33	117	117	232	116	(5.1)
BENIN DOM	176	171	201	203	171	170	528	524	1,052	930	(12.84)
CALABAR DOM	80	80	88	89	87	89	252	257	505	867	(41.68)
INT											
ENUGU DOM	167	163	208	207	200	201	576	571	1,147	1,371	(15.58)
INT	17	15	16	16	14	13	47	44	91	91	
IBADAN DOM	71	71	79	80	67	66	217	217	434	518	(16.81)
ILORIN DOM	104	103	123	124	105	109	336	336	672	787	(14.74)
INT											
IOS DOM	31	31	55	55	30	30	117	116	232	243	(4.74)
INT											
KADUNA DOM	875	846	174	172	190	191	1,239	1,209	2,448	358	64.95
INT										11	#DIV/0!
SOKOTO DOM	57	57	78	79	71	77	203	203	406	286	(29.31)
INT										1	
KANO DOM	169	170	190	187	168	166	547	547	1,094	1,311	(16.86)
INT	72	74	88	90	104	101	264	265	529	616	(16.45)
MAIDU DOM	381	381	417	417	415	414	1,213	1,212	2,425	1,045	56.97
INT										34	
MAKURDI DOM											
INT											
MMA DOM	2,470	2,481	2,743	2,722	2,523	2,588	7,736	7,791	15,527	16,354	(5.32)
INT	1,108	1,100	1,143	1,109	1,124	1,107	3,275	3,216	6,491	7,444	(12.15)
PHI DOM	593	576	693	692	687	666	1,968	1,934	3,902	4,786	(17.86)
INT	63	81	71	89	67	88	201	258	459	632	(27.64)
YOLA DOM	118	116	108	107	97	99	321	320	641	901	(28.12)
INT											
MINNA DOM	114	119	87	80	11	8	212	207	419	35	78.95
INT											
KATSINA DOM	21	21	44	44	14	14	79	78	158	150	(5.06)
INT											
OWERRI DOM	203	203	215	213	214	214	635	630	1,265	1,371	(8.84)
OSUN DOM	180	180	233	233	222	222	635	635	1,270	1,321	(4.34)
TOTAL DOM	6,567	6,517	7,831	7,828	7,248	7,285	21,646	21,630	43,276	47,391	(9.51)
TOTAL INT	1,379	1,376	1,630	1,615	1,611	1,617	4,620	4,608	9,228	11,114	(20.44)
GRAND TOTAL	7,946	7,893	9,461	9,443	8,859	8,902	26,266	26,238	52,504	58,505	(11.43)

FEDERAL AIRPORTS AUTHORITY OF NIGERIA

CARGO TRAFFIC (KG) SECOND QUARTER 2017

AIRPORT	APRIL		MAY		JUNE		TOTAL		GRAND	2016 2ND QTR GRAND TOTAL	Year-on- Year Growth
	UNLOADED	LOADED	UNLOADED	LOADED	UNLOADED	LOADED	UNLOADED	LOADED	TOTAL		
ABUJA INT	60,221	4,121	174,921	20,617	177,324	21,226	412,466	45,964	458,430	566,291	(19)
ENUGU INT	4,382	66,197	20,221	43,049	1,288	28,117	25,891	137,363	163,254	48,114	239
KANO INT	331,413	179,655	575,092	177,102	453,252	178,378	1,359,757	535,134	1,894,891	986,997	92
MMIA INT	11,625,545	5,514,770	8,916,879	3,552,274	5,214,001	1,937,772	25,756,424	11,004,816	36,761,240	43,739,697	(16)
PHC INT	342,794	3,990	1,485,404	237,780	675,100	10,506	2,503,298	252,276	2,755,574	975,199	183
TOTAL	12,364,355	5,768,733	11,172,517	4,030,822	6,520,965	2,175,999	30,057,837	11,975,553	42,033,390	46,316,298	(9)

SOURCE: FAAN QUARTERLY STATISTICS

MAIL TRAFFIC (KG) SECOND QUARTER 2017

AIRPORT	APRIL		MAY		JUNE		TOTAL		GRAND	2016 2ND QTR	Year-on- Year Growth
	UNLOADED	LOADED	UNLOADED	LOADED	UNLOADED	LOADED	UNLOADED	LOADED	TOTAL		
ABUJA INT	10,360	12,648	58,012	62,213	57,349	70,411	125,721.0	145,272.0	270,993.0	272,078.00	(0.40)
KANO INT	-	-	-	-	-	-	-	-	-	9020	(100.00)
MMIA INT	1,363,500	1,372,451	1,653,917	1,002,137	2,174,124	476,225	5,191,541.5	2,850,812.8	8,042,354.4	428887.7	1,775.17
TOTAL INT	1,373,860	1,385,099	1,711,929	1,064,350	2,231,473	546,636	5,317,263	2,996,085	8,313,347	709,986	1,071

SOURCE: FAAN QUARTERLY STATISTICS

PROVISIONAL PASSENGER TRAFFIC THIRD QUARTER 2017

AIRPORT	JULY		AUGUST		SEPTEMBER		TOTAL		GRAND TOTAL	2016 3RD QTR	Year-on-Year Growth
	ARRIVAL	DEPARTURE	ARRIVAL	DEPARTURE	ARRIVAL	DEPARTURE	ARRIVAL	DEPARTURE			
ABUJA DOM	138,987	136,144	150,235	152,971	132,675	132,694	421,692	419,709	841,401	872,707	7.27
INT	40,982	40,286	35,452	37,742	40,309	36,643	116,743	114,671	231,414	252,332	(8.29)
AKURE	449	392	1,391	1,408	1,765	1,841	3,605	3,642	7,246	2,898	150.03
BENIN	10,838	11,153	11,416	12,827	12,406	12,044	36,482	36,022	70,506	42,818	64.66
CALABAR DOM	7,072	7,065	7,108	7,706	7,639	7,190	21,819	21,962	43,780	49,639	(11.80)
INT	-	-	-	-	-	-	-	-	-	-	-
ENUGU DOM	10,499	11,315	12,566	13,344	12,866	11,686	35,932	36,345	72,276	80,199	(9.88)
INT	1,422	1,670	1,575	1,832	1,689	1,852	4,686	5,356	10,042	9,412	6.69
IBADAN	2,339	2,394	2,685	2,470	2,298	2,305	7,122	7,169	14,291	18,540	(21.84)
ILORIN DOM	2,858	3,021	4,199	3,680	4,047	4,018	11,104	12,761	20,065	17,530	43.64
INT	-	-	-	2,960	2,964	-	2,964	2,960	5,924	4,982	-
ILOS	1,959	1,885	2,198	2,108	2,026	1,919	6,207	5,912	12,119	16,852	(28.12)
INT	-	-	-	-	-	-	-	-	-	-	-
KADUNA DOM	7,780	7,455	8,227	7,507	6,613	7,405	22,840	22,367	45,207	36,979	22.25
INT	232	12	464	8,428	8,008	537	8,605	8,877	17,482	11,821	47.84
SOKOTO DOM	3,824	3,335	3,634	3,170	2,227	3,007	4,641	9,722	19,207	14,072	37.75
INT	214	-	-	8,172	9,433	-	4,652	8,372	18,024	15,742	14.50
KANO DOM	11,397	10,588	12,192	10,939	9,359	11,636	32,948	33,163	66,111	63,784	3.65
INT	9,778	3,399	3,869	14,959	13,839	3,836	27,436	27,194	49,630	56,451	(12.08)
MAIDUGU DOM	6,975	7,293	7,570	7,346	5,733	6,237	20,278	20,871	41,149	28,876	42.50
INT	465	24	0	0	8	3,576	473	3,600	4,073	7,221	(43.75)
MAKURDI	2	2	0	0	47	27	49	29	48	-	-
INT	-	-	-	-	-	-	-	-	-	-	-
MMIA DOM	123,620	146,505	160,860	162,666	126,325	144,220	450,805	453,421	904,226	891,770	1.20
INT	112,608	123,600	121,235	138,947	124,191	116,872	358,236	379,472	737,655	763,372	(3.37)
FH DOM	37,200	37,696	40,735	39,626	38,462	36,319	116,399	113,662	230,060	233,165	(1.33)
INT	3,273	3,673	3,355	4,322	3,813	3,675	10,441	11,670	22,111	25,024	(11.72)
YOLA DOM	5,310	5,000	6,286	3,385	5,158	5,283	16,772	15,568	32,342	37,542	(13.85)
INT	5,310	5,000	-	4,384	4,352	-	4,682	4,382	19,066	5,400	-
MINNA DOM	96	80	349	310	4,767	221	5,212	652	5,863	685	755.91
INT	-	-	199	4,927	4,777	71	4,926	5,043	9,969	3,692	-
KATSINA	47	527	35	404	283	284	365	1,225	1,580	977	61.72
INT	-	-	-	4,361	5,217	-	5,027	4,362	9,378	7,242	-
OWERRI	16,626	16,700	20,522	21,222	18,861	18,076	56,028	55,918	111,946	93,127	20.21
OSLBI	-	-	-	-	-	-	-	-	-	59,789	(100.00)
TOTAL DOM	409,898	410,572	452,472	453,249	413,381	406,287	1,275,751	1,270,108	2,545,859	2,516,948	1.15
TOTAL INT	174,260	177,664	166,049	231,179	218,550	167,066	558,859	575,909	1,134,768	1,162,739	(2.41)
GRAND TOTAL	584,158	588,236	618,521	684,428	631,931	573,353	1,834,610	1,846,017	3,680,627	3,679,687	0.03

SOURCE: FAAN QUARTERLY STATISTICS
 NOTE: 3RD QTR FIGURES YET TO BE HARMONIZED

PROVISIONAL AIRCRAFT TRAFFIC 3RD QUARTER 2022

AIRPORT	JULY		AUGUST		SEPTEMBER		TOTAL		GRAND TOTAL	2021 3RD QTR	Year-on-Year Growth
	ARRIVAL	DEPARTURE	ARRIVAL	DEPARTURE	ARRIVAL	DEPARTURE	ARRIVAL	DEPARTURE			
AKLAA DCV	2,118	2,108	2,114	2,106	2,023	2,022	6,255	6,236	12,491	12,593	(0.82)
INT	403	402	394	394	420	417	1,217	1,213	2,430	2,499	5.79
AKURE	31	30	54	54	53	53	138	137	275	181	52.18
BEN N	157	159	170	170	181	181	508	510	1,018	867	16.84
BAKASAR DCV	86	86	83	83	100	100	291	291	582	754	(22.55)
INT	-	-	-	-	-	-	-	-	-	-	-
ENJGU DCV	171	179	204	184	167	155	549	537	1,086	1,102	(1.46)
INT	14	14	15	15	13	13	42	42	84	66	116.29
BADAN	100	101	93	91	96	87	273	279	558	487	14.72
LOEN DOM	129	128	121	121	117	117	367	366	733	638	12.96
INT	0	0	3	3	8	8	17	17	34	20	-
JOS	46	46	41	41	44	44	101	101	202	254	(25.74)
INT	-	-	-	-	-	-	-	-	-	-	-
KADUNA DCV	121	120	132	125	110	122	363	367	730	1,020	(39.73)
INT	3	2	30	31	28	34	61	67	128	43	60.19
SOKOTO DCV	78	79	81	74	46	48	205	201	406	428	(5.42)
INT	1	1	10	17	19	14	30	34	64	59	-
KANO DCV	184	194	161	187	164	157	534	538	1,072	1,259	(17.44)
INT	93	86	130	98	75	116	298	300	598	601	(0.50)
VAD DCV	495	495	481	481	392	392	1,368	1,368	2,736	1,303	52.38
INT	8	4	0	0	10	10	18	14	32	48	-
VAKJERI	1	1	-	-	-	-	6	6	12	-	-
INT	-	-	-	-	-	-	-	-	-	-	-
YMAA DOM	2,563	2,573	2,619	2,592	2,435	2,454	7,487	7,617	15,104	14,097	6.67
INT	1,179	1,182	1,164	1,182	1,183	1,186	3,526	3,550	7,076	7,002	1.05
YVA DCV	696	438	716	717	637	631	2,049	1,786	3,835	3,303	15.77
INT	70	70	64	64	55	53	194	192	386	584	(52.59)
YOLA DOM	73	73	71	71	69	69	213	213	426	785	(84.27)
INT	0	0	11	11	10	10	21	21	42	30	-
YUNA DCV	16	16	17	17	23	22	55	55	111	97	12.61
INT	0	0	11	11	0	0	11	11	22	24	-
YASINA	10	10	18	18	38	44	76	72	148	171	(15.54)
INT	1	1	0	8	8	0	9	9	18	-	-
ZWEZIBI	292	292	324	324	255	255	871	871	1,742	1,343	29.40
ZWEZIBI	-	-	-	-	-	-	-	-	-	1,503	-
TOTAL DOM	7,357	7,118	7,508	7,455	6,842	6,958	21,707	21,531	43,238	42,785	1.05
TOTAL INT	1,772	1,762	1,843	1,845	1,829	1,841	5,444	5,448	10,892	10,740	1.40
GRAND TOTAL	9,129	8,880	9,351	9,300	8,671	8,799	27,151	26,979	54,130	53,525	1.12

NOTE 3RD QTR FIGURES ARE PROVISIONAL

PROVISIONAL CARGO TRAFFIC (KG) THIRD QUARTER 2017

AIRPORT	JULY		AUGUST		SEPTEMBER		TOTAL		GRAND	2016 3RD QTR	Year-on-Year Growth
	UNLOADED	LOADED	UNLOADED	LOADED	UNLOADED	LOADED	UNLOADED	LOADED	TOTAL		
ABJJA INT	182,012	22,314	186,212	30,016	184,724	30,426	552,948	82,756	635,704	822,856	- 25
ENUGU INT	7,951	10,087	41,768	15,726	5,423	3,009	55,142	28,822	83,964	278,373	- 70
KANO INT	556,639	115,089	568,934	97,536	368,519	41,082	1,494,093	253,707	1,747,799	532,834	228
MMA INT	9,027,972	4,923,161	9,194,216	5,170,234	9,187,651	3,547,234	27,409,840	13,640,629	41,050,469	45,840,223	- 10
PHC INT	179,094	7,232	422,872	7,736	740,815	8,129	1,342,781	23,097	1,365,878	1,601,100	- 15
GRAND TOTAL	9,953,668	5,077,883	10,414,003	5,321,248	10,487,132	3,629,880	30,854,803	14,029,011	44,883,814	49,095,386	- 9

PROVISIONAL MAIL TRAFFIC (KG) THIRD QUARTER 2017

AIRPORT	JULY		AUGUST		SEPTEMBER		TOTAL		GRAND	2016 3RD QTR	Year-on-Year Growth
	UNLOADED	LOADED	UNLOADED	LOADED	UNLOADED	LOADED	UNLOADED	LOADED	TOTAL		
ABJJA INT	61,221	75,035	58,931	84,317	55,213	88,788	175,365	248,140	423,505	403,470	5
KANO INT							-	-	-	222,734	- 100
MMA INT	3,317,775	414,909	3,323,886	448,780	3,178,278	454,528	9,819,939	1,318,217	11,138,156	889,127	1,153
TOTAL INT	3,378,996	489,944	3,382,817	533,097	3,233,491	543,316	9,995,304	1,566,357	11,561,661	1,515,331	663

PROVISIONAL PASSENGER TRAFFIC FOURTH QUARTER 2017

AIRPORT	OCTOBER		NOVEMBER		DECEMBER		TOTAL		GRAND TOTAL	2016 4TH QTR	Year-on-Year Growth
	ARRIVAL	DEPARTURE	ARRIVAL	DEPARTURE	ARRIVAL	DEPARTURE	ARRIVAL	DEPARTURE			
ADDIS DCV	146,084	145,685	140,298	134,936	142,317	130,466	428,699	411,087	829,785	810,410	3.62
ADDIS INT	33,947	31,826	27,743	25,847	40,063	43,880	100,948	101,548	202,496	200,795	0.85
AJLJRE DCV	2,079	2,720	2,519	2,577	1,549	1,497	6,747	6,794	13,541	4,112	229.30
BHINDIR	12,269	11,574	13,204	12,644	10,337	9,151	35,810	34,369	70,179	61,920	11.54
CALABAR DCV	6,854	6,939	7,363	7,552	7,080	6,242	21,297	20,733	42,030	44,212	(4.94)
CA ABARTI	-	-	-	-	-	-	-	-	-	-	-
ENUGU DCV	12,198	12,151	13,859	13,442	13,155	7,795	39,222	33,288	72,510	77,224	(5.87)
ENUGU INT	1,552	1,627	1,743	1,841	3,024	1,755	6,314	5,223	11,542	9,253	24.74
IBADAN DCV	-	-	-	-	-	-	-	-	-	16,744	(100.00)
ILOFIN DOM	4,479	4,346	4,134	4,052	3,803	3,703	12,456	12,101	24,557	17,993	36.48
ILOFIN INT	-	-	-	-	-	-	-	-	-	-	-
JOS DOM	1,949	1,881	1,811	1,698	2,411	2,152	6,173	5,733	11,906	13,210	(9.87)
JOS INT	-	-	-	-	-	-	-	-	-	-	-
KADUNA DCV	6,564	6,439	6,871	6,698	6,424	6,276	19,859	14,913	34,772	31,444	3.47
KADUNA INT	305	478	297	365	493	629	1,095	1,472	2,567	2,322	10.55
SOKOTO DCV	2,145	2,328	2,700	2,718	2,658	2,652	7,563	7,697	15,260	13,333	16.20
SOKOTO INT	559	-	-	-	-	-	559	-	559	3,398	(83.55)
PANO DOM	11,490	11,679	12,536	12,220	11,861	11,510	35,847	35,409	71,256	60,309	18.54
KANGINI	3,647	3,323	4,799	4,304	7,053	7,025	15,499	14,652	30,151	32,261	(6.54)
MAO DCV	6,812	6,774	6,525	6,570	7,325	7,562	21,262	20,907	42,169	30,203	39.62
MAO INT	-	-	11	5	-	-	11	6	17	3,036	(99.57)
MAKURDI DOM	16	16	12	19	12	19	60	54	114	-	-
MAKURDI INT	-	-	-	-	-	-	-	-	-	-	-
MMIA DOM	151,564	153,946	159,097	159,164	173,142	189,896	483,804	503,006	986,810	909,851	8.46
MMIA INT	108,151	111,552	114,628	105,769	163,074	136,052	385,853	353,373	739,226	721,181	2.50
PIL DOM	38,466	37,695	29,928	40,089	44,150	44,382	122,544	121,866	244,410	209,366	16.74
PIL INT	3,940	3,786	2,738	2,243	4,477	3,011	21,155	9,062	20,217	21,510	(6.01)
VOIA DCV	5,528	5,658	5,755	5,588	6,044	5,203	18,227	17,440	35,675	25,465	0.59
VOIA INT	4,551	5	278	53	532	517	5,183	800	5,983	2,677	-
MIRFA DOM	59	54	322	270	230	185	611	599	1,210	1,165	(3.86)
MIRFA INT	-	-	-	-	-	-	-	-	-	2,318	-
KAININA	133	127	63	51	-	-	196	188	384	1,258	(69.72)
KAININA INT	-	-	-	-	-	-	-	-	-	2,962	-
OWERRI	19,282	19,907	21,674	20,387	26,940	22,462	77,905	62,756	140,661	104,248	34.93
OYOBI	-	-	-	-	-	-	-	-	-	41,717	(100.00)
TOTAL DOM	428,471	431,421	438,863	425,685	470,948	451,853	1,338,282	1,308,959	2,647,241	2,486,704	6.46
TOTAL INT	255,947	252,597	251,959	240,648	218,716	192,891	526,622	486,136	1,012,758	1,002,613	1.01
GRAND TOTAL	584,418	584,018	590,822	566,333	689,664	644,744	1,864,904	1,795,095	3,659,999	3,489,317	4.89

PROVISIONAL AIRCRAFT TRAFFIC FOURTH QUARTER 2017

AIRPORT	OCTOBER		NOVEMBER		DECEMBER		TOTAL		GRAND TOTAL	2016 4TH QTR	Year-on-Year Growth
	ARRIVAL	DEPARTURE	ARRIVAL	DEPARTURE	ARRIVAL	DEPARTURE	ARRIVAL	DEPARTURE			
ABUJA DOM	2,389	2,364	2,195	2,135	2,287	2,177	6,868	6,876	11,744	12,704	8.8%
INT	417	414	248	218	451	470	1,122	1,282	2,205	2,253	(2.1%)
AKURE	82	82	75	75	52	52	209	209	418	190	218.4%
BENIN	184	188	185	185	149	147	521	521	1,045	1,174	(11.1%)
CALABAR DOM	32	32	137	143	487	483	747	685	1,432	641	223.3%
INT											
ENUGU DOM	181	177	117	116	152	152	500	505	1,005	1,144	(11.6%)
INT	14	14	14	14	11	11	48	48	96	119	(18.3%)
IBADAN	101	101	105	101	82	82	286	285	571	618	(8.1%)
ILORIN DOM	141	141	148	146	111	110	488	485	973	745	30.6%
INT											
JOS	42	42	42	42	51	51	140	140	280	241	15.9%
INT											
KADUNA DOM	111	111	115	115	112	108	444	445	889	1,020	(12.5%)
INT	18	17	11	12	14	11	54	40	94	72	30.1%
SOKOTO DOM	49	45	68	68	51	51	170	170	340	458	(25.6%)
INT											
KANO DOM	177	177	182	180	215	212	574	579	1,153	1,072	7.5%
INT	70	70	72	72	72	70	286	292	578	641	(9.4%)
MAID DOM	480	481	422	428	295	296	1,278	1,311	2,589	1,875	38.1%
INT			10	9			10	9	19	28	(31.8%)
MAKURDI											#DIV/0!
INT											
MMIA DOM	2,752	2,764	2,548	2,643	2,471	2,287	7,854	7,998	15,852	14,491	9.4%
INT	1,110	1,186	1,142	1,117	1,221	1,205	3,589	3,588	7,177	6,071	18.2%
P.H. DOM	822	771	715	710	717	751	2,275	2,130	4,405	4,519	(2.5%)
INT	56	57	47	47	47	49	150	151	301	481	(36.9%)
YOLA DOM	63	63	84	84	90	90	262	262	524	781	(33.0%)
INT	0	0			1	1	1	1	2	11	(81.8%)
MINNA DOM	14	14	30	30	27	27	76	76	152	50	304.0%
INT											
KATSINA	22	22	26	26			50	50	100	187	(46.5%)
INT											
OWERRI	276	276	312	312	422	422	1,012	1,071	2,083	1,441	44.5%
OSUFI											#DIV/0!
TOTAL DOM	8,009	7,893	7,757	7,728	7,917	7,919	23,683	23,540	47,223	44,658	5.4%
TOTAL INT	1,244	1,259	1,574	1,547	1,835	1,892	5,157	5,108	10,265	10,292	(0.2%)
GRAND TOTAL	9,253	9,152	9,331	9,275	9,752	9,811	28,840	28,648	57,488	54,950	4.6%

PROVISIONAL CARGO TRAFFIC (KG) FOURTH QUARTER 2017

AIRPORT	OCTOBER		NOVEMBER		DECEMBER		TOTAL		GRAND	2016 4TH QTR	Year-on-Year
	UNLOADED	LOADED	UNLOADED	LOADED	UNLOADED	LOADED	UNLOADED	LOADED	TOTAL		
ABUJA INT	187,431	32,043	183,216	42,318	197,207	54,224	567,854	128,585	696,439	3,436,303	(80)
ENUGU INT	3,657	7,259	-	61,271	-	12,416	3,657	80,946	84,603	524,701	(84)
KANO INT	473,114	114,073	628,157	224,496	550,636	169,285	1,651,908	507,854	2,159,761	2,415,295	(11)
MMIA INT	8,419,027	5,014,674	985,582	4,582,978	4,702,304	4,798,826	14,106,913	14,396,478	28,503,391	47,609,805	(40)
P.H. DOM							-	-	-	-	
PHC INT	844,473	10,578	260,461	13,369	836,758	15,911	1,941,692	39,858	1,981,550	3,397,303	(42)
TOTAL	9,927,702	5,178,627	2,057,416	4,924,432	6,286,905	5,050,662	18,272,023	15,153,721	33,425,744	57,383,407	(42)

PROVISIONAL MAIL TRAFFIC (KG) FOURTH QUARTER 2017

AIRPORT	OCTOBER		NOVEMBER		DECEMBER		TOTAL		GRAND	2016 4TH QTR	Year-on-Year
	UNLOADED	LOADED	UNLOADED	LOADED	UNLOADED	LOADED	UNLOADED	LOADED	TOTAL		
ABUJA INT	57,306	101,215	58,046	88,216	62,213	121,068	177,565	310,499	488,064	424,007	15.11
MMIA INT	2,569,691	403,040	4,854,084	584,145	3,711,887	493,593	11,135,662	1,480,778	12,616,439	3,551,663	255.23
TOTAL	2,626,997	504,255	4,912,130	672,361	3,774,100	614,661	11,313,227	1,791,277	13,104,503	3,975,670	229.62

PROVISIONAL 2017 PASSENGERS ANNUAL TRAFFIC

AIRPORT	1ST QUARTER 2017		2ND QUARTER 2017		3RD QUARTER 2017		4TH QUARTER 2017		TOTAL 2017		2017 GRAND TOTAL	2016 GRAND TOTAL	Year-on-Year Growth
	ARRIVAL	DEPARTURE	ARRIVAL	DEPARTURE	ARRIVAL	DEPARTURE	ARRIVAL	DEPARTURE	ARRIVAL	DEPARTURE			
ABUJA DOM	233,926	224,426	290,705	287,777	227,642	219,709	216,595	211,037	1,495,526	1,262,294	1,358,621	1,441,164	17.3%
INT	64,247	62,640	72,603	70,357	115,742	114,671	100,948	101,718	354,745	349,464	702,000	880,426	(20.5%)
AKURE	1,032	1,223	1,171	1,097	7,505	7,541	6,747	6,794	12,579	12,715	20,274	9,373	155.9%
BENIN	14,681	13,925	18,528	20,887	14,451	16,024	15,610	24,369	53,075	52,105	24,569	147,090	24.3%
CAABAR DOM	15,818	18,229	18,225	18,198	21,629	21,567	12,297	20,744	78,170	79,752	1,179,221	102,180	(22.1%)
INT													
ENUGU	20,523	24,399	24,275	21,395	22,932	25,423	20,222	22,588	91,053	125,127	272,580	420,592	(35.2%)
ENUGU INT	4,332	3,522	2,897	3,177	4,060	3,356	6,229	3,223	17,035	12,362	40,116	38,220	6.3%
IBADAN	1,246	4,924	1,125	1,042	1,222	7,164			24,274	14,249	16,722	70,797	(45.1%)
ILOFIN DOM	0,322	0,564	2,727	2,028	22,202	22,757	22,450	22,201	47,929	42,024	64,207	74,221	11.0%
INT					2,962	2,302			1,052	2,950	3,924	2,082	18.9%
JOS DOM	4,207	4,216	1,542	1,026	6,202	3,022	5,272	4,711	24,228	12,657	47,092	48,990	(3.8%)
INT													
KADUNA DOM	29,782	62,210	65,457	63,767	22,820	22,757	27,850	22,021	172,726	162,065	352,009	227,223	(52.5%)
INT					3,022	6,877	1,095	1,272	9,702	12,149	20,249	22,188	7.4%
LAGOS DOM	5,279	4,753	6,592	8,573	3,655	5,712	7,562	7,697	27,071	30,775	61,766	72,867	(16.6%)
INT					3,092	8,372	329		10,213	8,372	18,585	19,357	(4.0%)
KANO DOM	12,836	22,766	20,723	28,687	12,028	22,163	27,827	27,409	122,774	122,821	240,299	252,568	(5.0%)
INT	12,128	20,580	20,206	22,122	12,270	22,292	25,270	22,622	90,880	92,622	182,222	202,189	(9.8%)
MAIDUGURI	17,507	12,822	16,622	16,526	20,278	20,821	21,262	20,207	75,766	72,370	122,212	110,212	10.1%
INT					377	7,600	11	6	464	3,606	4,090	11,216	(67.8%)
MAKURDI					49	49	50	52	109	102	112		
INT													
MMA DOM	76,282	789,266	228,211	222,992	220,805	222,222	221,802	220,200	1,222,222	1,222,222	2,222,222	1,222,222	(5.0%)
INT	222,222	220,222	220,222	222,222	222,222	222,222	222,222	222,222	222,222	222,222	2,222,222	2,222,222	(5.0%)
PH DOM	92,925	92,624	100,822	98,181	116,292	112,622	122,222	121,866	422,222	422,222	462,222	472,222	(1.5%)
INT	4,262	11,822	9,222	10,622	10,222	11,622	11,222	9,062	40,222	42,222	62,222	32,222	18.2%
PORT HARCOURT	12,222	12,622	15,987	12,222	12,222	15,222	12,222	12,222	52,222	52,222	122,222	122,222	(0.0%)
INT					4,222	5,222	5,222	5,000	12,222	10,222	22,222	22,222	(0.0%)
MINNA DOM	724	622	1,822	1,222	5,222	622	611	589	8,222	7,222	12,222	2,222	(82.2%)
INT					4,922	1,022			4,922	5,022	9,622	6,022	61.2%
KATSINA	222	262	256	288			1,222	256	1,222	2,022	2,222	2,222	(0.0%)
INT					5,022	4,222			5,022	4,222	9,222	10,222	(11.2%)
OSHERI	26,208	28,200	24,207	22,292	26,208	22,298	27,207	22,296	102,209	112,296	222,222	262,202	(16.0%)
OSURU	12,202	16,212	10,207	20,278					22,209	22,209	20,286	20,272	(0.0%)
TOTAL DOM	1,022,222	1,022,222	1,222,222	1,222,222	1,222,222	1,222,222	1,222,222	1,222,222	4,222,222	4,222,222	2,022,222	2,022,222	(0.0%)
TOTAL INT	222,222	222,222	222,222	222,222	222,222	222,222	222,222	222,222	1,222,222	1,222,222	2,222,222	2,222,222	(0.0%)
GRAND TOTAL	1,222,222	1,222,222	1,422,222	1,422,222	1,422,222	1,422,222	1,422,222	1,422,222	5,422,222	5,422,222	4,222,222	4,222,222	(0.0%)

PROVISIONAL AIRCRAFT TRAFFIC SECOND QUARTER 2017

AIRPORT	1ST QUARTER		2ND QUARTER		3RD QUARTER		4TH QUARTER		TOTAL		GRAND TOTAL	2016 GRAND TOTAL	Year-on-Year Growth	
	ARRIVAL	DEPARTURE	ARRIVAL	DEPARTURE	ARRIVAL	DEPARTURE	ARRIVAL	DEPARTURE	ARRIVAL	DEPARTURE				
ABJJA DOM	4,375	4,444	4,725	4,733	6,255	5,276	6,868	6,836	24,223	24,229	44,452	41,548	6.44	
INT	730	725	733	725	1,217	1,223	1,124	1,082	3,804	3,735	7,539	9,264	(18.66)	
AKURE	121	118	117	117	128	127	209	209	585	581	1,166	821	39.61	
BENIN	483	479	548	544	508	510	524	521	2,063	2,054	4,117	3,738	10.14	
CA_LABAR DOM	250	251	252	253	291	291	727	685	1,520	1,480	3,000	3,172	(5.42)	
INT	-	-	-	-	-	-	-	-	-	-	-	-	-	-
ENUGU DOM	502	498	570	571	540	537	550	545	2,162	2,131	4,293	5,185	(17.20)	
INT	32	33	47	44	42	42	38	38	159	157	316	381	(17.06)	
IBADAN	216	209	217	217	274	279	286	281	998	990	1,988	2,026	(1.88)	
ILCRIN DOM	100	298	116	116	167	166	188	185	1,191	1,185	2,376	2,873	(17.38)	
INT	-	-	-	-	17	17	-	-	17	17	34	20	70.00	
JOS	191	130	116	116	101	101	140	140	488	487	975	977	(0.20)	
INT	-	-	-	-	-	-	-	-	-	-	-	-	-	-
KADUNA DOM	1,479	1,470	1,239	1,209	163	167	143	125	3,124	3,171	6,295	3,719	82.71	
INT	-	-	-	-	61	47	43	46	104	93	197	80	146.25	
SOKOTO DOM	175	167	201	203	205	201	170	170	751	741	1,492	1,885	(20.85)	
INT	-	-	-	-	30	34	-	-	30	34	64	71	(15.91)	
KANO DOM	122	109	527	523	534	538	578	579	2,061	2,049	4,110	4,772	(14.81)	
INT	190	189	264	263	298	300	196	191	948	943	1,891	2,125	(11.75)	
MAID DOM	677	630	1,213	1,212	1,368	1,368	1,297	1,311	4,555	4,521	9,076	5,186	75.01	
INT	-	-	-	-	18	14	10	9	28	23	51	150	(68.13)	
MAKURDI	-	-	-	-	6	6	-	-	6	6	12	-	-	-
INT	-	-	-	-	-	-	-	-	-	-	-	-	-	-
MMIA DOM	7,774	7,846	7,736	7,791	7,487	7,617	7,864	7,900	30,861	31,254	62,115	61,342	1.10	
INT	1,154	1,281	1,175	1,116	1,126	1,150	1,189	1,186	11,841	11,733	23,574	28,978	(4.81)	
P.F. DOM	2,073	2,015	1,968	1,934	2,049	1,786	2,279	2,190	8,369	7,925	16,294	17,335	(6.01)	
INT	205	265	201	258	194	192	150	153	750	868	1,618	2,134	(24.18)	
YOLA DOM	326	323	321	320	213	213	262	262	1,124	1,118	2,242	3,124	(32.55)	
INT	-	-	-	-	21	21	3	3	24	24	48	45	6.67	
MINKA DOM	113	113	212	207	56	55	76	76	457	451	908	271	235.06	
INT	-	-	-	-	11	11	-	-	11	11	22	31	(29.03)	
KATSINA	46	47	79	79	76	74	50	50	251	248	499	616	(18.99)	
INT	-	-	-	-	9	9	-	-	9	9	18	23	(21.71)	
OWERRI	658	655	632	630	871	871	1,072	1,071	3,233	3,227	6,460	5,585	15.67	
OSUBI	524	519	635	635	-	-	-	-	1,159	1,154	2,313	5,331	(56.61)	
TOTAL DOM	20,645	20,601	21,646	21,630	21,707	21,531	23,683	23,540	87,681	87,302	174,983	169,720	3.10	
TOTAL INT	4,511	4,483	4,620	4,608	5,444	5,448	5,153	5,108	19,728	19,647	39,375	43,339	(9.15)	
GRAND TOTAL	25,156	25,084	26,266	26,238	27,151	26,979	28,836	28,648	107,409	106,949	214,358	213,059	0.61	

PROVISIONAL 2017 CARGO TRAFFIC (KG)											GRAND TOTAL	2016 GRAND TOTAL	Year-on-Year Growth
AIRPORT	1ST QUARTER		2ND QUARTER		3RD QUARTER		4TH QUARTER		TOTAL				
	UNLOADED	LOADED	UNLOADED	LOADED	UNLOADED	LOADED	UNLOADED	LOADED	UNLOADED	LOADED			
ABUJA INT	461,989	60,156	412,466	45,964	552,948	82,756	567,854	128,585	1,995,257	317,461	2,312,718	5,670,457	(59.21)
ENUGU INT	79,621	62,258	25,891	137,363	55,142	28,822	3,657	80,946	164,311	309,389	473,700	851,188	(44.35)
KANO INT	747,000	316,000	2,359,757	335,134	1,494,033	253,707	1,651,908	507,854	5,252,758	1,612,694	6,865,452	5,707,968	20.28
MMIA INT	22,375,902	15,067,168	25,756,424	11,004,816	27,409,840	13,640,629	14,106,913	14,396,478	89,649,078	54,109,091	143,758,169	175,740,102	(18.20)
PHC INT	1,536,710	750,769	2,503,298	252,276	1,342,781	23,097	1,941,692	39,858	7,324,481	1,066,000	8,390,481	7,137,153	17.56
TOTAL	25,201,222	16,256,351	30,057,837	11,975,553	30,854,803	14,029,011	18,272,023	15,153,721	104,385,885	57,414,635	161,800,520	195,106,868	(17.07)

FEDERAL AIRPORTS AUTHORITY OF NIGERIA													
PROVISIONAL 2017 MAIL TRAFFIC (KG)											GRAND TOTAL	2016 GRAND TOTAL	Year-on-Year Growth
AIRPORT	1ST QUARTER		2ND QUARTER		3RD QUARTER		4TH QUARTER		TOTAL				
	UNLOADED	LOADED	UNLOADED	LOADED	UNLOADED	LOADED	UNLOADED	LOADED	UNLOADED	LOADED			
ABUJA INT	142,926	183,697	125,721	145,172	175,365	248,140	177,565	310,499	621,597	887,608	1,509,205	1,337,430	13
MMIA INT	3,688,207	2,451,361	5,191,542	2,850,813	9,819,939	1,318,217	11,135,662	1,480,778	29,835,349	8,101,169	37,936,517	5,232,905	625
TOTAL	3,831,133	2,635,058	5,317,263	2,996,085	9,995,304	1,566,357	11,313,227	1,791,277	30,456,946	8,988,777	39,445,722	6,570,335	500

NOTE: 3RD AND 4TH QTR FIGURES ARE YET TO BE HARMONIZED

SOURCE: FAAN QUARTERLY STATISTICS

Acknowledgements/Contacts

Acknowledgements


We acknowledge the contributions of our strategic partner Federal Airports Authority of Nigeria (FAAN) and our technical partner, Proshare in the design, concept and production of this publication.





Contact Us

 @nigerianstat

 NBSNigeria

 www.nigerianstat.gov.ng

 **Head Office Address**
Plot 762, Independence Avenue, Central
Business District, FCT, Abuja Nigeria.

 +234 803 386 5388

 feedback@nigerianstat.gov.ng