

CONSUMER PRICE INDEX
(BASE PERIOD NOVEMBER 2009 = 100)



NATIONAL BUREAU OF STATISTICS

BRIEF METHODOLOGY:

The CPI measures the average change over time in prices of goods and services consumed by people for day-to-day living. The construction of the CPI combines economic theory, sampling and other statistical techniques using data from other surveys to produce a weighted measure of average price changes in the Nigerian economy. The weighting occurs to capture the importance of the selected commodities in the entire index. The production of the CPI requires skills of economists, statisticians, computer scientists, data collectors and others.

Key in the construction of the price index is the selection of the market basket of goods and services. Every month, 10534 informants spread across the country provide price data for the computation of the CPI. The market items currently comprises of 740 goods and services regularly priced.

The first stage in the calculation of the CPI is the collection of prices on each item (740 goods and services) from outlets in each sector (rural or urban) for each state. Prices are then averaged for each item according to sector across the state. Next step is to use the average price to calculate basic index for each commodity: The current year price of each commodity are compared with a base year's price to obtain a relative price.

Next we use the Laspeyres formula to compute aggregated index for each class (which has a multitude of commodities which have similar consumption purpose): Here the sum of the product of weights (obtained from the expenditure survey) and relative prices for each item is divided by the sum of the weight of the items in that class, and the result multiplied by 100 gives the required index number. This index number is still classified according to the urban or rural classification sector for each of the 36 states and the FCT. This yields 85 classes then 48 groups which are then reclassified into 12 Divisions and then the derived:

1. The country composite index
2. The Urban Composite index
3. The Rural Composite index
4. The Combined Urban and Rural State Composite index

The survey methodology generates 3774 all items indices for all states and the FCT.

This edition of the Statistical News contains the revised Consumer Price Index (CPI) based on Nigeria Living Standard Survey (NLSS) 2003/2004. The consumption expenditure data were re-valued to November 2009, which is the base period for the revised CPI.

The May 2003 and September 1985 based indices are being continued using factors derived from the new CPI. All of these indices will yield the same price change for any commodity group contained in all the series. A new sub index - Imported Food Index- is available in the revised CPI.

Note: The urban and rural indices were weighted with the ratio of their populations to the national i.e. 0.455 and 0.545 respectively to compute the composite indices at the 12 COICOP functions and all items levels. This may cause variance between a recalculated all items index using the weights published on table 2 and the published all items index because the published weights were computed only from consumption expenditure survey result. The following breakdown highlights a non-exhaustive list of the components of the current CPI:

FOOD AND NON ALCOHOLIC BEVERAGES

Food
Bread and cereals
Meat
Fish
Milk, cheese and eggs
Oils and fats
Fruit
Vegetables
Potatoes, Yam & other tubers
Food products nec
Coffee, tea and cocoa
Soft drinks

ALCOHOLIC BEVERAGES, TOBACCO AND KOLA

Spirits
Wine
Tobacco
Narcotics

CLOTHING AND FOOTWEAR

Clothing materials, other articles of clothing
Garments
Cleaning, repair and hire of clothing
Shoes and other footwear
Repair and hire of footwear

HOUSING, WATER, ELECTRICITY, GAS

Actual and imputed rentals for housing
Water supply

Miscellaneous services relating to the dwelling

Electricity
Gas
Liquid fuel
Solid fuels

FURNISHINGS, HOUSEHOLD EQUIPMENT

Furniture and furnishings
Carpets and other floor coverings
Repair of Furniture
Household textiles
Major household appliances whether electric or not
Repair of household appliances
Glassware, tableware and household utensils
Non-durable household goods
Domestic services and household services

HEALTH

Pharmaceutical products
Medical services
Dental services
Paramedical services
Hospital services

TRANSPORT

Motor cars
Motor cycles
Bicycles
Vehicle spare parts
Fuels and lubricants for personal transportation
Maintenance and repair of personal transport
Passenger transport by road
Passenger transport by air
Passenger transport by sea and inland waterways

COMMUNICATION

Postal services
Telephone and telefax equipment
Telephone and telefax services

RECREATION AND CULTURE

Audio-visual, photographic and information processing equipments
Photographic development
Musical instrument
Recreational and sporting services
Games of chance

EDUCATION

Books & stationery

RESTAURANTS AND HOTELS

Catering services
Accommodation services

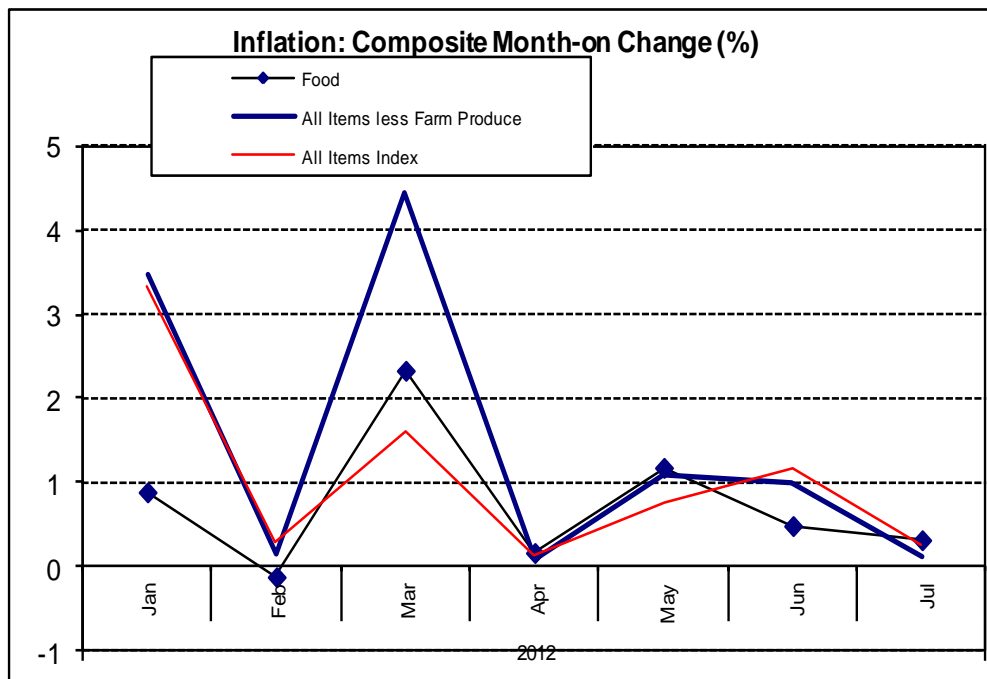
MISCELLANEOUS GOODS AND SERVICES

Hairdressing salons and personal grooming establishments
Appliances, articles and products for personal care
Jewellery, clocks and watches
Insurance
Other services.

ALL ITEMS INDEX

The Composite Consumer Price Index, which measures inflation, rose to 12.8 percent year-on-year in July 2012. Changes in the index could be partly attributable to increases in the prices of some item classes such as Oils and Fats, Gas, Bread and Cereals, Meats, Fish, Fruits and other items with relatively smaller weights in the index such as repairs of household appliances, catering services and other miscellaneous services. It should be noted that the All-Items (headline) Index is made up of the Core Index and Farm Produce items, while Food Index is made up of Farm Produce items as well as Processed Foods. As Processed Foods are included in both the Core and Food sub-indices, this implies that these sub-indices are not mutually-exclusive.

On a monthly basis, the year-on-year changes in the CPI have generally been higher compared to last year, due to base effects. This is not surprising due to the fact that prices were relatively lower last year, but have remained persistently higher this year as a result of various shocks to the economy such as the partial repeal of the fuel subsidy, the increases in electricity tariff structures and higher food prices due to a rapid draw down of pantries during the planting season earlier in the year. However, a look at the monthly changes over the previous three months reveals that although the CPI has generally risen, its increase has been at a slower rate which suggests that prices may be easing across the economy. For example, the headline index recorded month-on changes of 0.75, 1.15 and 0.24 percent in the months of May, June, and July, respectively. The Food sub-index recorded month-on changes of 1.2, 0.5 and 0.3 percent during the same period, while the “Core” index was recorded at 1.1, 1.0 and 0.1 percent. On a monthly basis, the composite CPI was higher by 0.24 percent when compared with June 2012.



In July, the urban inflation rate was recorded at 15.6 percent year-on-year while the rural index indicated a 10.7 percent year-on-year increase. The Urban All Items index increased by 0.23 percent month-on-month, while the corresponding Rural index increased by 0.25 percent, when compared with the preceding month.

The percentage change in the average composite CPI for the twelve-month period ending July 2012 over the average of the CPI for the previous twelve-month period was 11.6 percent. The corresponding 12-month year-on-year average percentage change for urban and rural indices was 11.8 and 11.5 respectively.

FOOD INDEX

In July, the Composite Food Index increased year-on-year by 12.1 percent to 138.1 points. The index was also higher than levels recorded in June of this year by 0.3 percent. The appreciation in the Food Index was as a result of an increase in the price of oils and fats, vegetables, soft drinks, as well as fruit classes, the latter being a key dietary component during the traditional break of the fast during the period of Ramadan. Also, prices of wheat, flour, and associated by-products partially contributed to the rise in the food index as the import duty on wheat grains and flour increased effectively by 20 percent and 100 percent respectively in July. The average annual rate of rise of the index was 11.0 percent (year-on-year) for the twelve-month period ending July 2012.

ALL ITEMS LESS FARM PRODUCE

The “All items less Farm Produce” index which excludes the prices of volatile agricultural products rose by 15.0 percent year-on-year. On month-on-month basis, the core index increased by 0.1 percent in July 2012. The marginal rise in the Core index is partly attributable to higher price of gas, and other services such as household repairs, catering, and household textiles. The average 12 month annual rate of rise of the index was 13.0 percent for the twelve-month period ending July 2012.

For more enquiries relating to the CPI revision contact kocimo@nigerianstat.gov.ng

Table 1 Composite Consumer Price Index (Base November 2009 = 100)														
		All Items Index (Farm Produce + All Items Less Farm Produce)					All Items less Farm Produce (includes Processed Food)				Food (Farm Produce + Processed Food)			
		Monthly	12-Month Average	Month- on change (%)	Year-on change (%)	12-Month average change (%)	Monthly	Month- on change (%)	Year-on change (%)	12-Month average change (%)	Monthly	Month- on change (%)	Year-on change (%)	12-Month average change (%)
Weights**		1000.0					513.10				507.06			
Please note that the above weights are only expenditure weights which are still adjusted by population across 37 states. They should not be taken as the final weights in the computation of the CPI														
2008	Jan	79.1	76.8	1.4	8.6	5.5	84.4	2.1	2.5	7.9	75.5	0.5	12.6	2.9
	Feb	79.3	77.3	0.3	8.0	5.5	85.5	1.4	6.4	7.5	75.2	-0.5	8.7	3.3
	Mar	79.9	77.8	0.8	7.8	5.8	82.2	-3.9	0.5	6.8	78.2	4.1	12.4	4.2
	Apr	81.1	78.3	1.6	8.2	6.1	83.5	1.5	1.2	6.4	79.4	1.5	13.1	5.1
	May	82.7	78.9	1.9	9.7	6.5	85.7	2.7	3.3	6.3	80.8	1.7	14.7	6.1
	Jun	85.7	79.6	3.7	12.0	7.0	87.9	2.5	3.6	5.8	84.5	4.6	18.1	7.4
	Jul	87.6	80.5	2.2	14.0	7.8	89.4	1.7	4.8	5.4	86.7	2.6	20.9	9.0
	Aug	88.6	81.3	1.2	12.4	8.5	90.0	0.7	3.9	4.8	87.7	1.2	18.8	10.7
	Sep	89.6	82.2	1.1	13.0	9.2	91.3	1.4	6.9	4.5	88.5	0.8	17.1	12.3
	Oct	89.0	83.2	-0.6	14.7	10.1	90.8	-0.6	7.9	4.3	88.0	-0.5	19.2	14.0
	Nov	89.0	84.1	-0.05	14.8	10.9	90.3	-0.5	9.3	4.5	88.1	0.1	18.1	15.3
	Dec	89.7	85.1	0.8	15.1	11.6	91.2	1.0	10.4	5.1	88.6	0.6	18.0	16.1
2009	Jan	90.2	86.0	0.5	14.0	12.0	91.1	-0.1	8.0	5.5	89.5	0.9	18.4	16.5
	Feb	90.8	87.0	0.7	14.6	12.6	91.7	0.6	7.2	5.6	90.2	0.8	20.0	17.5
	Mar	91.4	87.9	0.6	14.4	13.1	92.0	0.3	11.8	6.5	90.9	0.8	16.2	17.7
	Apr	91.9	88.8	0.6	13.3	13.5	92.5	0.6	10.9	7.3	91.6	0.7	15.3	17.9
	May	93.6	89.8	1.8	13.2	13.8	94.2	1.8	9.9	7.8	93.5	2.0	15.7	17.9
	June	95.3	90.6	1.8	11.2	13.7	95.3	1.2	8.5	8.3	95.6	2.2	13.1	17.5

Table 1 Composite Consumer Price Index (Base November 2009 = 100)														
		All Items Index (Farm Produce + All Items Less Farm Produce)					All Items less Farm Produce (includes Processed Food)				Food (Farm Produce + Processed Food)			
		Monthly	12-Month Average	Month- on change (%)	Year-on change (%)	12-Month average change (%)	Monthly	Month- on change (%)	Year-on change (%)	12-Month average change (%)	Monthly	Month- on change (%)	Year-on change (%)	12-Month average change (%)
Weights**		1000.0					513.10				507.06			
Please note that the above weights are only expenditure weights which are still adjusted by population across 37 states. They should not be taken as the final weights in the computation of the CPI														
	July	97.3	91.4	2.1	11.1	13.4	96.8	1.5	8.3	8.6	97.9	2.4	12.9	16.8
	Aug	98.4	92.2	1.1	11.0	13.3	97.3	0.5	8.0	8.9	98.9	1.1	12.7	16.3
	Sep	98.9	93.0	0.5	10.4	13.1	98.1	0.8	7.4	8.9	99.5	0.6	12.5	15.9
	Oct	99.4	93.8	0.5	11.6	12.8	98.9	0.8	8.9	9.0	99.9	0.4	13.5	15.4
	Nov	100.0	94.7	0.7	12.4	12.6	100.0	1.1	10.7	9.1	100.0	0.1	13.5	15.0
	Dec	102.2	95.8	2.2	13.9	12.5	101.5	1.5	11.2	9.2	102.4	2.4	15.5	14.8
2010	Jan	103.1	96.9	1.0	14.4	12.6	102.1	0.6	12.1	9.6	103.7	1.3	15.9	14.7
	Feb	105.0	98.0	1.9	15.6	12.7	104.5	2.3	14.0	10.1	104.8	1.1	16.2	14.4
	Mar	104.9	99.2	-0.1	14.8	12.8	104.1	-0.4	13.2	10.3	105.3	0.4	15.8	14.4
	Apr	105.7	100.3	0.8	15.0	12.9	104.4	0.3	12.8	10.4	106.6	1.2	16.3	14.5
	May	105.7	101.3	-0.04	12.9	12.9	105.2	0.8	11.7	10.6	105.7	-0.8	13.0	14.3
	Jun	108.8	102.4	2.91	14.1	13.1	107.4	2.1	12.7	10.9	110.0	4.1	15.1	14.4
	Jul	109.9	103.5	1.08	13.0	13.3	107.7	0.3	11.3	11.2	111.6	1.5	14.0	14.5
	Aug	111.9	104.6	1.76	13.7	13.5	109.3	1.5	12.4	11.5	113.8	2.0	15.1	14.7
	Sep	112.4	105.7	0.46	13.6	13.8	110.7	1.3	12.8	12.0	114.0	0.1	14.6	14.9
	Oct	112.7	106.9	0.30	13.4	13.9	111.9	1.1	13.2	12.3	114.0	-0.0	14.1	14.9
	Nov	112.8	107.9	0.04	12.8	13.9	111.7	-0.1	11.7	12.4	114.4	0.3	14.4	15.0

Table 1 Composite Consumer Price Index (Base November 2009 = 100)

		All Items Index (Farm Produce + All Items Less Farm Produce)					All Items less Farm Produce (includes Processed Food)				Food (Farm Produce + Processed Food)			
		Monthly	12-Month Average	Month- on change (%)	Year-on change (%)	12-Month average change (%)	Monthly	Month- on change (%)	Year-on change (%)	12-Month average change (%)	Monthly	Month- on change (%)	Year-on change (%)	12-Month average change (%)
Weights**		1000.0					513.10				507.06			
Please note that the above weights are only expenditure weights which are still adjusted by population across 37 states. They should not be taken as the final weights in the computation of the CPI														
	Dec	114.2	108.9	1.29	11.8	13.7	112.6	0.7	10.9	12.4	115.4	0.9	12.7	14.7
2011	Jan	115.6	110.0	1.20	12.1	13.5	114.5	1.7	12.1	12.4	114.3	-0.9	10.3	14.2
	Feb	116.7	110.9	0.96	11.1	13.2	115.5	0.9	10.6	12.1	117.7	2.9	12.2	13.9
	Mar	118.3	112.1	1.37	12.8	13.0	117.5	1.7	12.8	12.1	118.1	0.4	12.2	13.6
	Apr	117.7	113.0	-0.54	11.3	12.7	117.9	0.3	12.9	12.1	119.0	0.7	11.6	13.2
	May	118.7	114.1	0.91	12.4	12.6	118.9	0.9	13.0	12.2	118.5	-0.3	12.2	13.2
	Jun	119.9	115.1	0.97	10.2	12.3	119.8	0.7	11.5	12.1	120.1	1.3	9.2	12.7
	Jul	120.3	115.9	0.32	9.4	12.0	120.1	0.2	11.5	12.1	120.4	0.2	7.9	12.1
	Aug	122.3	116.8	1.67	9.3	11.6	121.2	0.9	10.9	12.0	123.7	2.7	8.7	11.6
	Sep	124.0	117.8	1.41	10.3	11.4	123.5	1.9	11.6	11.9	124.8	0.9	9.5	11.2
	Oct	124.6	118.8	0.49	10.5	11.1	124.8	1.1	11.5	11.7	125.0	0.2	9.7	10.8
	Nov	124.7	119.7	0.04	10.5	11.0	124.6	-0.2	11.5	11.7	125.4	0.3	9.6	10.4
	Dec	126.0	120.7	1.06	10.3	10.8	124.8	0.2	10.8	11.7	128.1	2.2	11.0	10.3
2012	Jan	130.2	121.9	3.35	12.6	10.9	129.1	3.5	12.7	11.8	129.3	0.9	13.1	10.5
	Feb	130.5	123.1	0.28	11.9	11.0	129.3	0.1	11.9	11.9	129.1	-0.1	9.7	10.3
	Mar	132.6	124.3	1.59	12.1	10.9	135.1	4.5	15.0	12.1	132.1	2.3	11.8	10.3

Table 1 Composite Consumer Price Index (Base November 2009 = 100)														
		All Items Index (Farm Produce + All Items Less Farm Produce)					All Items less Farm Produce (includes Processed Food)				Food (Farm Produce + Processed Food)			
		Monthly	12-Month Average	Month- on change (%)	Year-on change (%)	12-Month average change (%)	Monthly	Month- on change (%)	Year-on change (%)	12-Month average change (%)	Monthly	Month- on change (%)	Year-on change (%)	12-Month average change (%)
Weights**		1000.0					513.10				507.06			
Please note that the above weights are only expenditure weights which are still adjusted by population across 37 states. They should not be taken as the final weights in the computation of the CPI														
	Apr	132.8	125.5	0.13	12.9	11.1	135.2	0.1	14.7	12.2	132.3	0.2	11.2	10.3
	May	133.8	126.8	0.75	12.7	11.1	136.7	1.1	14.9	12.4	133.9	1.2	12.9	10.4
	Jun	135.3	128.1	1.15	12.9	11.3	138.0	1.0	15.2	12.7	134.5	0.5	12.0	10.6
	Jul	135.7	129.4	0.24	12.8	11.6	138.1	0.1	15.0	13.0	135.0	0.3	12.1	11.0

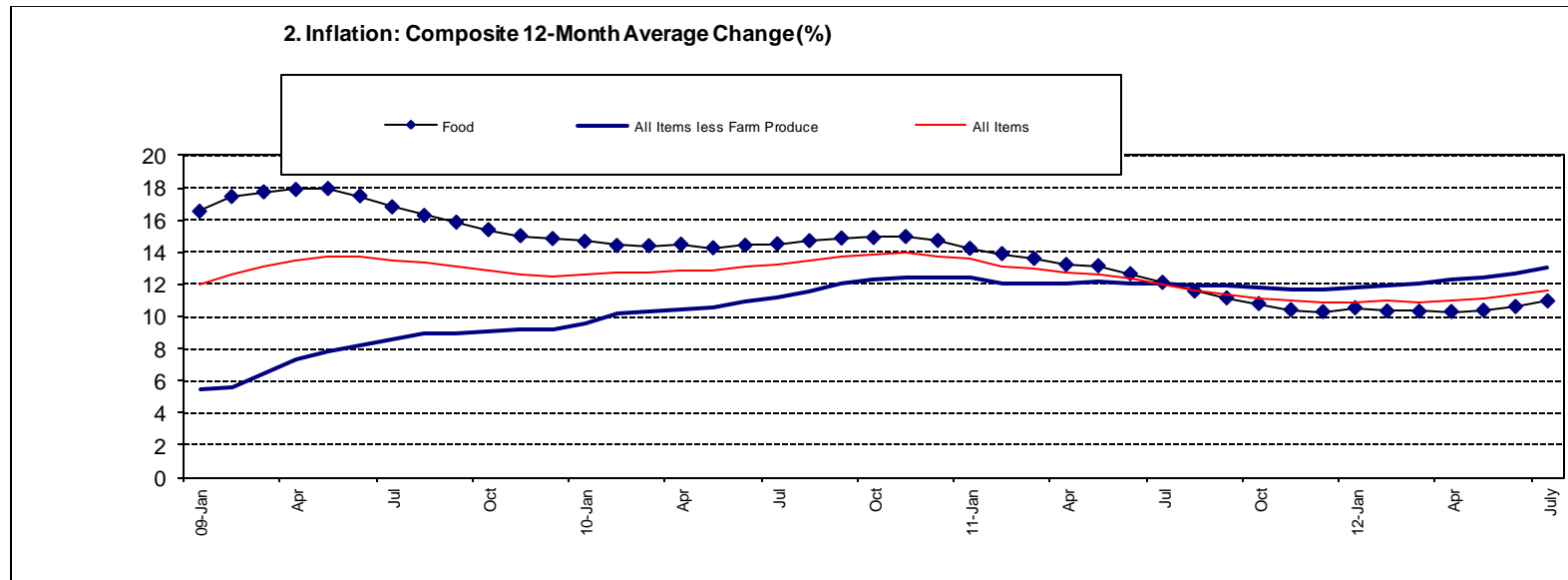
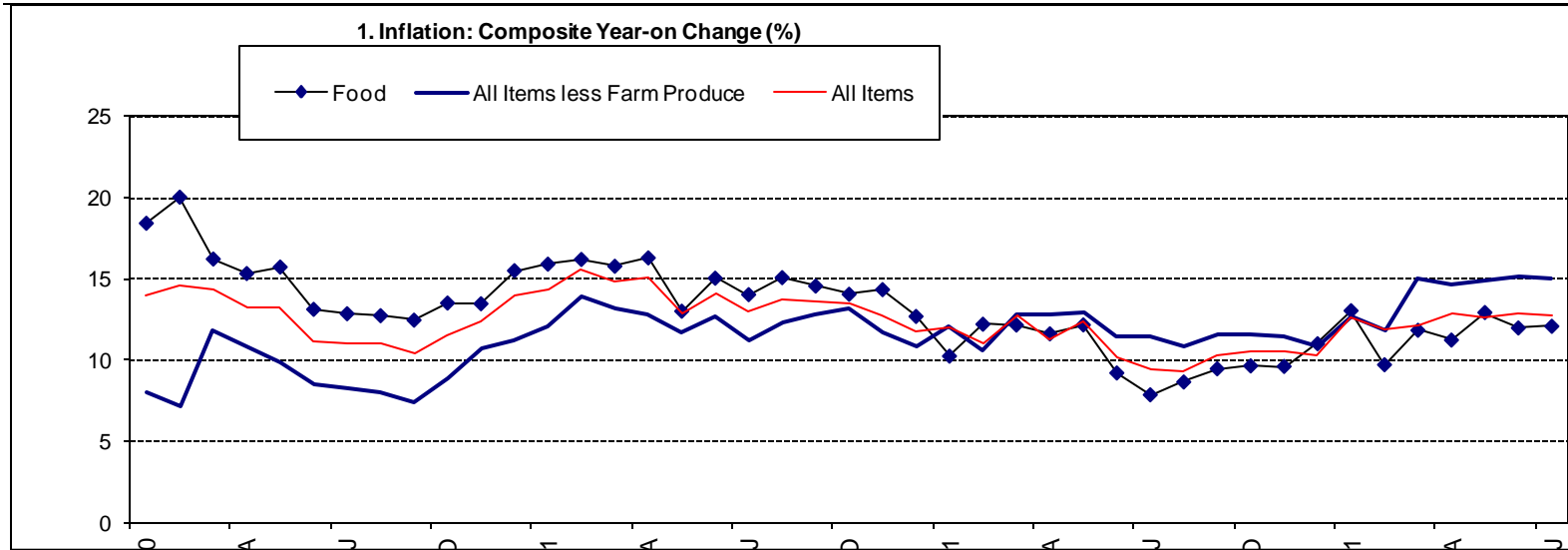


Table 2 Composite Consumer Price Index (Base November 2009 = 100)

		All Items	All Items less Farm Produce.	All Items less Farm Produce. and Energy	Imported Food	Food	Food & Non Alcoholic Bev.	Alcoholic Beverage, Tobacco and Kola	Clothing and Footwear	Housing Water, Electricity, Gas and Other Fuel	Furnishings & Household Equipment Maintenance.	Health.	Transport	Communication	Recreation & Culture.	Education	Restaurant & Hotels	Miscellaneous Goods & Services	Month-on (%)	Year-on (%)	12-month average (%)
Weights**		1000	513.1	428.1	132.5	507.06	518	10.87	76.5	167.3	50.26	30	65.1	6.8	6.91	39.44	12.1	16.6			
Please note that the above weights are only expenditure weights which are still adjusted by population across 37 states. They should not be taken as the final weights in the computation of the CPI																					
2008	Jan	79.1	84.4	82.2		75.5	75.8	96.7	86.3	84.6	78.2	83.9	86.5	83.1	88.8	75.3	76.9	82.1	1.4	8.6	5.5
	Feb	79.3	85.5	84.9		75.2	75.4	95.7	86.6	85.2	78.5	83.4	88.4	82.9	87.1	75.5	78.4	81.8	0.3	8.0	5.5
	Mar	79.9	82.2	80.8		78.2	78.4	98.1	85.1	83.3	80.5	86.1	84.4	81.9	88.2	74.8	79.6	79.4	0.8	7.8	5.8
	Apr	81.1	83.5	83.0		79.4	79.7	97.7	89.4	84.3	81.6	89.4	88.6	93.9	87.9	73.7	82.8	80.5	1.6	8.2	6.1
	May	82.7	85.7	84.8		80.8	81.0	99.7	90.7	85.6	83.7	90.5	87.9	97.6	89.0	74.9	91.9	86.4	1.9	9.7	6.5
	Jun	85.7	87.9	88.4		84.5	84.6	99.4	92.8	88.4	86.3	91.6	88.3	96.5	88.7	78.4	94.3	86.4	3.7	12.0	7.0
	Jul	87.6	89.4	87.6		86.7	86.8	100.2	94.2	90.8	87.8	93.5	89.7	97.3	90.9	80.9	94.3	90.8	2.2	14.0	7.8
	Aug	88.6	90.0	89.4		87.7	87.8	100.3	95.7	92.5	87.4	92.4	88.6	97.3	92.4	83.7	97.8	88.0	1.2	12.4	8.5
	Sep	89.6	91.3	90.2		88.5	88.5	99.2	95.5	94.1	87.4	92.3	88.3	97.7	92.5	83.1	97.1	88.9	1.1	13.0	9.2
	Oct	89.0	90.8	90.5		88.0	88.1	97.8	96.0	93.3	88.0	93.3	88.8	97.3	92.9	84.7	97.6	90.5	-0.6	14.7	10.1
	Nov	89.0	90.3	90.1		88.1	88.2	97.6	95.9	92.0	87.1	94.2	89.2	97.1	93.9	84.9	98.0	91.1	0.05	14.8	10.9
	Dec	89.7	91.2	91.7		88.6	88.7	97.5	96.9	93.5	87.1	96.1	90.9	97.1	93.5	87.6	99.5	92.9	0.8	15.1	11.6
2009	Jan	90.2	91.1	92.6		89.5	89.5	97.6	97.0	92.3	87.3	97.1	91.2	97.1	93.7	88.3	99.4	93.9	0.5	14.0	12.0
	Feb	90.8	91.7	92.6		90.2	90.2	98.5	97.0	92.6	87.4	98.6	90.2	97.1	92.8	88.1	100.4	94.1	0.7	14.6	12.6
	Mar	91.4	92.0	93.1		90.9	91.0	98.5	97.1	92.6	87.9	99.0	91.0	97.1	92.7	89.9	100.2	94.9	0.6	14.4	13.1
	Apr	91.9	92.5	94.1		91.6	91.7	99.1	97.5	92.9	89.6	101.1	94.4	97.1	93.4	89.3	101.3	95.4	0.6	13.3	13.5
	May	93.6	94.2	95.4		93.5	93.5	99.5	96.7	94.3	88.8	99.2	96.0	97.1	94.6	92.3	100.2	94.5	1.8	13.2	13.8
	June	95.3	95.3	96.6		95.6	95.6	99.7	97.1	96.3	89.6	100.1	94.0	97.1	95.0	92.6	101.1	97.8	1.8	11.2	13.7
	July	97.3	96.8	98.4		97.9	97.8	101.4	97.9	98.3	99.3	101.7	92.5	99.4	96.8	93.9	98.9	98.8	2.1	11.1	13.4
	Aug	98.4	97.3	97.7		98.9	98.9	100.2	99.1	98.4	100.2	101.8	93.1	101.5	98.1	99.4	101.2	100.0	1.1	11.0	13.3
	Sep	98.9	98.1	98.5		99.5	99.5	99.3	99.1	98.7	98.7	101.6	94.9	101.2	97.6	99.6	99.9	100.1	0.5	10.4	13.1
	Oct	99.4	98.9	99.1		99.9	99.9	99.7	99.6	99.5	99.1	102.3	96.0	100.4	97.5	97.7	99.0	99.7	0.5	11.6	12.8

Table 2 Composite Consumer Price Index (Base November 2009 = 100)

	All Items	All Items less Farm Produce.	All Items less Farm Produce. and Energy	Imported Food	Food	Food & Non Alcoholic Bev.	Alcoholic Beverage, Tobacco and Kola	Clothing and Footwear	Housing Water, Electricity, Gas and Other Fuel	Furnishings & Household Equipment Maintenance.	Health.	Transport	Communication	Recreation & Culture.	Education	Restaurant & Hotels	Miscellaneous Goods & Services	Month-on (%)	Year-on (%)	12-month average (%)	
Weights**	1000	513.1	428.1	132.5	507.06	518	10.87	76.5	167.3	50.26	30	65.1	6.8	6.91	39.44	12.1	16.6				
Please note that the above weights are only expenditure weights which are still adjusted by population across 37 states. They should not be taken as the final weights in the computation of the CPI																					
	Nov	100.0	100.0	100.0	100.0	100.0	100.0	100.0	100.0	100.0	100.0	100.0	100.0	100.0	100.0	100.0	100.0	100.0	0.7	12.4	12.6
	Dec	102.2	101.5	101.9	101.5	102.4	102.7	101.9	101.5	100.2	101.7	101.8	101.8	100.0	101.9	101.5	102.6	101.7	2.2	13.9	12.5
2010	Jan	103.1	102.1	102.6	101.7	103.7	103.9	102.3	102.4	100.6	103.0	103.0	103.0	99.6	103.0	103.1	106.7	103.3	1.0	14.4	12.6
	Feb	105.0	104.5	105.0	103.2	104.8	105.4	102.6	103.4	102.3	104.7	104.9	104.7	100.3	99.4	106.0	106.3	105.9	1.9	15.6	12.7
	Mar	104.9	104.1	104.6	103.0	105.3	105.3	104.3	104.5	102.2	105.7	105.3	104.8	100.6	103.3	105.5	105.6	104.4	-0.1	14.8	12.8
	Apr	105.7	104.4	105.1	103.9	106.6	106.7	104.8	105.1	102.2	103.8	104.9	106.8	100.4	103.1	105.6	109.7	106.2	0.8	15.0	12.9
	May	105.7	105.2	106.5	104.9	105.7	106.2	103.8	105.9	102.1	102.6	104.8	106.3	100.2	103.3	108.6	110.1	107.2	0.04	12.9	12.9
	Jun	108.8	107.4	108.6	109.6	110.0	110.2	108.5	109.1	104.8	110.7	108.5	107.4	102.1	102.6	106.6	106.9	109.6	2.91	14.1	13.1
	Jul	109.9	107.7	108.8	109.3	111.6	112.0	109.6	110.3	105.1	109.0	110.3	107.5	102.6	103.0	105.7	105.0	110.7	1.08	13.0	13.3
	Aug	111.9	109.3	110.4	109.3	113.8	114.1	112.3	112.8	106.2	110.3	112.3	108.6	100.6	105.0	106.0	107.3	111.2	1.76	13.7	13.5
	Sep	112.4	110.7	111.7	113.6	114.0	113.5	109.0	112.4	109.9	112.1	112.0	112.2	101.8	108.4	108.4	107.1	111.7	0.46	13.6	13.8
	Oct	112.7	111.9	112.0	114.1	114.0	114.1	111.7	112.8	111.0	113.2	114.8	107.1	102.9	109.6	110.1	108.5	110.6	0.30	13.4	13.9
	Nov	112.8	111.7	111.3	115.1	114.4	114.3	112.2	112.0	112.6	113.1	111.1	111.7	102.0	107.8	107.7	108.2	112.8	0.04	12.8	13.9
	Dec	114.2	112.6	112.5	115.4	115.4	115.5	111.9	113.7	113.2	113.2	112.7	112.9	102.4	107.8	109.1	109.6	112.1	1.29	11.8	13.7
2011	Jan	115.6	114.5	113.0	96.0	114.3	118.7	110.6	114.4	113.9	113.5	111.3	109.2	103.6	108.3	110.2	110.5	113.2	1.2	12.1	13.5
	Feb	116.7	115.5	115.5	124.0	117.7	117.9	113.4	116.0	114.7	115.6	114.7	117.2	104.9	106.3	110.6	112.3	114.2	0.96	11.1	13.2
	Mar	118.3	117.5	117.5	119.4	118.1	118.2	112.7	116.5	116.0	115.9	117.5	115.5	105.1	107.4	111.0	112.2	112.8	1.37	12.8	13.0
	Apr	117.7	117.9	117.9	119.1	119.0	118.0	114.5	116.2	121.0	115.4	117.2	114.8	105.1	107.1	111.4	113.3	114.7	0.54	11.3	12.7
	May	118.7	118.9	119.0	120.6	118.5	118.5	115.1	118.2	121.2	116.6	116.6	115.7	105.7	107.4	111.9	113.8	115.6	0.91	12.4	12.6
	Jun	119.9	119.8	119.8	111.9	120.1	119.5	114.2	118.0	121.6	116.3	119.9	118.5	105.6	107.9	112.2	114.3	117.9	0.97	10.2	12.3
	Jul	120.3	120.1	119.9	112.6	120.4	120.2	112.4	117.7	122.5	117.6	118.3	120.7	106.2	111.1	112.6	115.0	119.8	0.32	9.4	12.0

Table 2 Composite Consumer Price Index (Base November 2009 = 100)

	All Items	All Items less Farm Produce.	All Items less Farm Produce. and Energy	Imported Food	Food	Food & Non Alcoholic Bev.	Alcoholic Beverage, Tobacco and Kola	Clothing and Footwear	Housing Water, Electricity, Gas and Other Fuel	Furnishings & Household Equipment Maintenance.	Health.	Transport	Communication	Recreation & Culture.	Education	Restaurant & Hotels	Miscellaneous Goods & Services	Month-on (%)	Year-on (%)	12-month average (%)	
Weights**	1000	513.1	428.1	132.5	507.06	518	10.87	76.5	167.3	50.26	30	65.1	6.8	6.91	39.44	12.1	16.6				
Please note that the above weights are only expenditure weights which are still adjusted by population across 37 states. They should not be taken as the final weights in the computation of the CPI																					
	Aug	122.3	121.2	121.1	116.0	123.7	123.4	116.4	118.7	124.5	120.0	120.4	121.9	106.4	109.5	112.9	115.1	121.5	1.67	9.3	11.6
	Sep	124.0	123.5	122.7	117.6	124.8	124.2	116.2	119.9	126.1	119.2	122.3	122.3	106.2	109.8	113.8	115.7	121.6	1.41	10.3	11.4
	Oct	124.6	124.8	124.0	117.0	125.0	124.3	117.6	120.6	128.5	119.5	121.8	122.2	106.6	117.0	114.0	116.6	122.0	0.49	10.5	11.1
	Nov	124.7	124.6	123.5	124.2	125.4	125.1	118.9	121.9	128.1	120.2	122.7	123.3	107.1	115.7	114.2	116.9	125.5	0.04	10.5	11.0
	Dec	126.0	124.8	123.6	125.3	128.1	127.8	119.0	122.3	131.9	119.9	122.8	128.7	106.5	113.3	114.6	118.9	122.7	1.06	10.3	10.8
2012	Jan	130.2	129.1	129.2	121.6	129.3	130.8	123.2	121.1	131.8	120.6	122.7	127.8	108.7	114.5	115.0	120.0	125.9	3.35	12.6	10.9
	Feb	130.5	129.3	129.4	121.6	129.1	129.1	123.2	121.1	131.8	120.6	122.7	127.9	108.7	114.5	115.1	120.0	125.9	0.28	11.9	11.0
	Mar	132.6	135.1	134.5	129.9	132.1	131.9	120.6	133.7	139.7	130.2	129.7	134.4	113.4	116.7	125.6	121.4	131.6	1.59	12.1	10.9
	Apr	132.8	135.2	134.7	131.3	132.3	132.1	121.3	134.1	139.5	130.7	130.1	134.6	114.0	117.6	125.0	121.9	132.0	0.13	12.9	11.1
	May	133.8	136.7	136.3	132.5	133.9	133.7	122.0	134.7	139.7	131.1	130.8	135.1	114.4	118.4	125.5	122.6	132.6	0.75	12.7	11.1
	Jun	135.3	138.0	136.2	132.6	134.5	134.3	122.5	134.8	146.5	131.3	131.1	135.5	114.8	118.5	125.7	123.1	132.9	1.15	12.9	11.3
	Jul	135.7	138.1	136.5	132.9	135.0	134.7	122.8	134.9	146.7	131.3	131.3	135.8	114.9	118.9	125.9	123.4	133.1	0.24	12.8	11.6

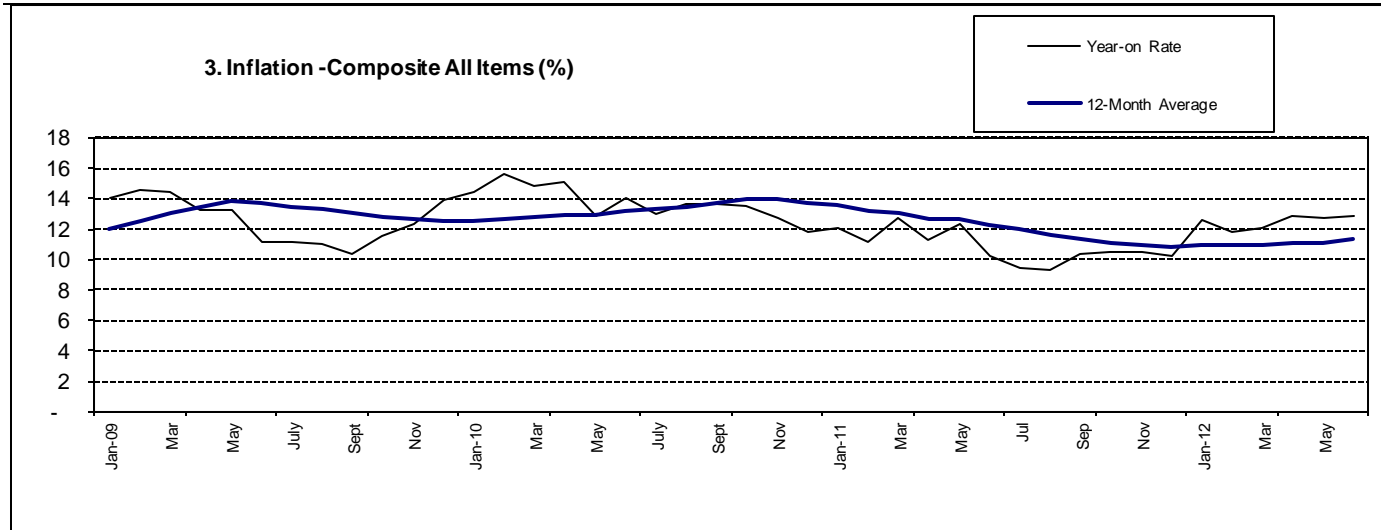


Table 3 Urban Consumer Price Index (Base November 2009 = 100)

		All Items	All Items less Farm Produce.	All Items less Farm Produce. and Energy	Imported Food	Food	Food & Non Alcoholic Bev.	Alcoholic Beverage, Tobacco and Kola	Clothing and Footwear	Housing Water, Electricity, Gas and Other Fuel	Furnishings & Household Equipment Maintenance.	Health.	Transport	Communication	Recreation & Culture.	Education	Restaurant & Hotels	Miscellaneous Goods & Services	Month-on (%)	Year-on (%)	12-month average (%)
Weights		1000	575.22	440.93	155.13	476.82	490.59	11.19	65.5	191.51	49.74	27.4	74.54	10.14	7.2	40.05	14.49	17.65			
Please note that the above weights are only expenditure weights which are still adjusted by population across 37 states. They should not be taken as the final weights in the computation of the CPI																					
2007	Jan	74.5	80.3	78.2		71.6	71.6	97.4	89.1	75.8	78.1	86.6	89.8	99.1	96.3	74.5	78.1	77.7	-0.1	11.9	11.0
	Feb	75.3	80.3	78.8		73.0	73.0	97.8	90.2	75.2	78.0	85.0	89.5	98.3	93.2	77.3	77.9	75.2	1.1	9.2	10.5
	Mar	77.6	82.5	81.5		75.1	75.1	95.5	90.2	80.6	79.9	84.0	84.9	98.9	91.2	73.5	74.7	92.0	3.1	11.2	10.3
	Apr	78.2	82.5	81.5		75.9	75.8	96.6	90.2	80.8	81.3	81.4	84.2	99.1	92.5	80.4	76.6	92.3	0.7	11.2	10.1
	May	79.2	86.0	84.2		75.4	75.4	98.6	84.9	85.6	82.3	75.7	94.4	99.1	92.0	79.7	71.5	87.3	1.3	12.4	10.3
	Jun	79.9	85.7	83.1		76.4	76.4	98.0	84.4	84.1	84.2	80.6	93.1	99.1	96.4	79.4	83.5	81.8	0.8	12.0	10.6
2008	Jan	84.0	89.9	90.5		80.8	80.9	101.8	91.7	87.8	89.7	91.1	92.8	101.4	98.8	89.4	91.8	87.7	0.9	12.7	10.7
	Feb	85.2	90.9	91.3		82.1	82.2	102.6	93.0	89.2	90.1	92.0	92.5	101.5	99.6	86.7	91.9	88.6	1.4	13.1	11.1
	Mar	85.4	91.2	91.7		82.3	82.4	103.5	92.3	88.8	90.2	94.4	92.1	101.5	99.0	85.6	96.9	89.4	0.2	10.1	11.0
	Apr	86.9	92.5	93.2		83.9	84.0	105.7	93.4	90.1	91.4	97.5	92.5	101.5	100.7	85.2	97.4	90.7	1.7	11.1	11.0
	May	87.3	92.8	92.5		84.6	84.6	104.8	94.0	90.4	92.1	97.5	91.5	101.5	101.3	84.5	96.5	90.4	0.6	10.3	10.8
	Jun	89.1	94.7	95.3		86.2	86.2	103.7	95.1	93.2	95.9	96.2	91.2	99.1	98.9	84.7	98.8	91.4	2.0	11.5	10.8
	Jul	90.4	96.6	97.6		87.3	87.3	105.4	97.7	95.6	96.5	96.6	91.5	99.3	99.3	84.7	99.7	93.0	1.5	12.9	11.0
	Aug	91.9	98.2	99.0		88.5	88.6	104.5	97.7	98.1	96.8	95.7	92.3	99.3	98.6	86.5	101.6	92.2	1.6	12.1	11.1
	Sep	92.3	97.9	97.7		89.2	89.2	101.6	97.3	98.7	95.9	94.2	91.8	100.7	97.1	86.6	100.7	92.7	0.5	13.5	11.5
	Oct	92.1	97.8	98.2		88.9	89.0	98.3	97.2	98.2	97.8	94.7	92.0	99.8	97.9	88.4	102.3	92.1	-0.2	13.8	11.9
	Nov	91.9	96.8	97.3		89.3	89.3	97.9	96.6	96.4	96.8	94.6	92.1	99.4	98.5	89.0	102.6	92.4	-0.2	12.0	12.1
	Dec	92.8	97.8	97.9		89.6	89.7	97.5	98.5	98.8	96.2	95.9	93.9	99.3	98.6	90.9	102.7	93.7	0.9	11.4	12.0
2009	Jan	92.8	96.6	97.8		90.5	90.5	97.6	97.8	96.4	96.3	96.3	94.0	99.3	97.8	92.3	102.0	96.0	0.0	10.4	11.8
	Feb	93.6	96.3	97.6		92.0	92.0	98.6	98.2	95.5	96.2	98.1	93.0	99.3	97.8	90.9	103.2	95.2	0.8	9.8	11.6
	Mar	93.9	96.5	98.0		92.4	92.4	98.8	97.9	95.5	96.5	98.3	94.1	99.3	96.7	93.0	104.1	95.1	0.4	9.9	11.5

Table 3 Urban Consumer Price Index (Base November 2009 = 100)

	All Items	All Items less Farm Produce.	All Items less Farm Produce. and Energy	Imported Food	Food	Food & Non Alcoholic Bev.	Alcoholic Beverage, Tobacco and Kola	Clothing and Footwear	Housing Water, Electricity, Gas and Other Fuel	Furnishings & Household Equipment Maintenance.	Health.	Transport	Communication	Recreation & Culture.	Education	Restaurant & Hotels	Miscellaneous Goods & Services	Month-on (%)	Year-on (%)	12-month average (%)	
Weights	1000	575.22	440.93	155.13	476.82	490.59	11.19	65.5	191.51	49.74	27.4	74.54	10.14	7.2	40.05	14.49	17.65				
Please note that the above weights are only expenditure weights which are still adjusted by population across 37 states. They should not be taken as the final weights in the computation of the CPI																					
	Apr	94.3	97.4	98.8		92.5	92.6	99.9	98.6	96.4	98.0	99.6	95.7	99.3	97.8	89.7	104.4	95.6	0.5	8.6	11.3
	May	95.7	98.2	98.7		94.1	94.1	100.1	96.9	98.1	96.2	97.9	97.1	99.3	98.9	96.3	104.2	98.2	1.4	9.5	11.2
	June	97.2	98.8	99.7		96.3	96.3	100.6	97.0	98.5	97.4	99.3	96.7	99.3	99.9	96.7	106.2	98.1	1.6	9.2	11.0
	July	98.9	99.5	100.3		98.4	98.4	102.1	99.9	100.2	98.8	100.9	95.7	100.8	100.1	97.6	100.1	98.5	1.7	9.3	10.7
	Aug	99.6	99.7	99.4		99.3	99.3	100.7	99.9	100.6	99.7	100.3	95.1	102.1	101.2	97.4	105.2	99.9	0.7	8.4	10.4
	Sep	99.8	99.5	99.2		99.8	99.8	99.8	99.7	100.3	101.1	98.8	96.0	101.5	100.5	99.5	99.7	100.8	0.2	8.1	10.0
	Oct	99.8	99.9	99.3		99.6	99.6	99.8	100.3	100.8	100.9	99.9	96.8	100.9	100.1	98.9	98.0	100.7	0.0	8.3	9.5
	Nov	100.0	100.0	100.0	100.0	100.0	100.0	100.0	100.0	100.0	100.0	100.0	100.0	100.0	100.0	100.0	100.0	100.0	0.2	8.8	9.3
	Dec	101.4	101.3	101.8	100.5	101.6	101.7	99.9	100.9	101.4	100.8	101.6	102.0	99.2	104.2	100.7	103.2	101.6	1.4	9.3	9.1
2010	Jan	102.6	102.5	102.7	101.1	102.8	102.8	100.7	103.1	102.6	101.9	102.4	103.5	99.7	105.8	102.5	108.3	102.8	1.2	10.5	9.1
	Feb	104.4	105.4	105.4	103.1	102.9	103.6	101.6	103.6	104.4	103.6	105.4	103.9	100.1	99.4	108.0	106.7	106.3	1.8	11.6	9.3
	Mar	106.0	105.7	105.9	103.5	106.1	105.9	103.8	105.9	104.8	106.1	106.8	108.1	100.9	107.1	106.8	107.5	106.1	1.5	12.9	9.6
	Apr	105.9	105.4	105.6	103.4	106.3	106.1	103.9	106.0	103.9	105.5	106.9	106.7	100.8	108.3	106.6	111.5	107.0	-0.1	12.2	9.9
	May	103.8	103.7	104.9	104.5	103.8	104.7	102.0	104.7	99.2	103.0	104.1	105.9	101.2	105.0	105.7	109.3	104.8	-1.9	8.5	9.8
	Jun	107.7	107.0	108.0	110.0	108.5	108.6	106.8	108.7	105.2	108.7	107.9	106.2	103.4	104.0	106.8	108.6	109.3	3.7	10.8	9.9
	Jul	109.1	107.9	108.4	109.1	110.4	110.6	109.2	110.4	103.9	108.4	111.6	109.3	104.0	102.8	106.7	106.4	110.6	1.3	10.3	10.0
	Aug	110.5	109.0	109.9	111.0	112.8	112.9	110.0	112.1	103.0	110.7	113.0	110.0	100.9	106.4	108.1	111.6	111.7	1.3	10.9	10.2
	Sep	110.6	109.4	110.5	113.0	112.6	112.4	106.6	112.4	106.0	110.5	110.0	112.2	101.4	110.1	107.6	107.3	109.2	0.1	10.9	10.4
	Oct	111.2	110.0	110.1	114.3	113.5	113.5	109.6	111.6	110.7	109.4	110.8	105.8	101.4	109.0	108.4	106.0	110.8	0.5	11.5	10.7
	Nov	111.7	111.3	111.1	113.4	112.8	112.8	110.0	112.2	111.0	111.1	111.8	110.4	101.1	109.7	107.9	107.8	113.1	0.5	11.7	10.9
	Dec	112.2	111.2	111.0	113.5	113.4	113.4	109.7	113.8	111.8	111.5	112.9	111.7	100.8	109.2	109.3	111.3	112.7	0.4	10.7	11.0
2011	Jan	110.7	108.5	106.0	67.2	111.7	116.5	107.8	114.9	110.8	112.4	111.6	108.3	105.8	108.1	111.2	113.2	111.6	-1.4	7.9	10.8
	Feb	114.2	114.1	114.4	117.6	115.5	115.2	110.2	115.1	115.5	114.4	118.6	111.6	101.9	103.7	111.7	114.9	114.6	3.2	9.4	10.6
	Mar	115.0	114.9	114.2	118.0	116.0	116.3	109.8	115.7	118.2	115.1	120.5	111.9	101.8	105.1	111.6	115.9	113.8	0.7	8.5	10.3
	Apr	115.5	116.3	116.1	114.9	116.4	115.5	112.3	116.3	116.1	114.8	117.8	112.2	102.5	106.1	111.6	115.1	115.5	0.5	9.1	10.0
	May	115.8	116.8	116.7	116.0	116.7	116.2	112.9	117.2	116.0	116.4	120.1	116.2	102.8	105.6	111.7	115.9	114.7	0.2	11.5	10.2

Table 3 Urban Consumer Price Index (Base November 2009 = 100)

	All Items	All Items less Farm Produce.	All Items less Farm Produce. and Energy	Imported Food	Food	Food & Non Alcoholic Bev.	Alcoholic Beverage, Tobacco and Kola	Clothing and Footwear	Housing Water, Electricity, Gas and Other Fuel	Furnishings & Household Equipment Maintenance.	Health.	Transport	Communication	Recreation & Culture.	Education	Restaurant & Hotels	Miscellaneous Goods & Services	Month-on (%)	Year-on (%)	12-month average (%)	
Weights	1000	575.22	440.93	155.13	476.82	490.59	11.19	65.5	191.51	49.74	27.4	74.54	10.14	7.2	40.05	14.49	17.65				
Please note that the above weights are only expenditure weights which are still adjusted by population across 37 states. They should not be taken as the final weights in the computation of the CPI																					
	Jun	116.6	116.6	116.3	112.4	118.0	117.2	112.1	117.2	116.3	115.4	121.1	116.5	102.0	106.5	111.7	116.8	114.7	0.7	8.3	10.0
	Jul	116.3	116.8	115.6	111.8	118.0	117.6	112.2	117.4	118.3	116.7	118.8	119.0	103.4	104.9	112.5	117.3	115.8	-0.3	6.6	9.7
	Aug	118.3	118.7	117.8	113.4	119.9	119.1	113.8	117.9	119.9	119.7	121.1	122.1	103.4	107.9	112.6	116.1	116.9	1.7	7.1	9.4
	Sep	120.0	121.3	119.6	115.5	120.7	119.8	114.1	118.4	124.8	120.2	123.6	121.3	103.7	108.2	113.2	117.7	117.2	1.4	8.4	9.2
	Oct	119.9	121.2	119.1	115.5	120.9	120.0	114.6	119.1	125.6	120.3	121.7	121.3	104.3	111.1	113.2	118.8	116.7	-0.1	7.8	8.9
	Nov	120.0	121.1	118.9	119.0	120.8	119.7	115.5	120.9	125.1	119.7	123.3	122.8	105.0	108.6	113.7	119.0	120.5	0.1	7.4	8.5
	Dec	122.3	122.0	119.6	121.1	124.5	123.8	115.2	120.2	128.0	119.2	122.1	128.2	104.6	107.9	114.6	121.1	117.4	2.0	9.0	8.4
2012	Jan	128.9	128.2	127.4	113.4	125.5	127.1	119.3	119.7	135.4	120.6	123.3	127.4	105.9	108.9	114.9	123.4	119.9	5.3	16.4	9.1
	Feb	129.2	128.4	127.5	113.5	126.3	126.2	119.3	119.7	135.5	120.6	123.3	127.5	105.9	108.9	114.9	123.4	119.9	0.3	13.1	9.4
	Mar	130.7	132.6	132.1	129.5	129.1	128.9	113.2	135.2	136.9	127.4	129.0	137.6	110.6	115.1	124.2	122.9	131.4	1.2	13.7	9.9
	Apr	131.1	133.0	132.6	130.7	129.4	129.2	114.6	136.3	136.9	128.1	129.4	137.6	111.1	116.4	124.4	123.1	132.3	0.3	13.4	10.3
	May	132.1	134.0	133.6	132.1	131.1	130.9	115.5	136.8	137.2	128.4	130.1	138.2	111.7	117.8	125.3	123.5	133.0	0.8	14.1	10.5
	Jun	134.1	135.8	134.0	132.1	131.4	131.3	116.1	137.0	146.5	128.3	130.4	138.3	112.1	117.6	125.5	123.7	133.4	1.5	15.0	11.1
	Jul	134.5	135.5	133.6	132.4	131.7	131.6	116.4	137.0	146.9	128.5	130.8	138.7	112.2	118.4	125.9	124.2	133.6	0.2	15.6	11.8

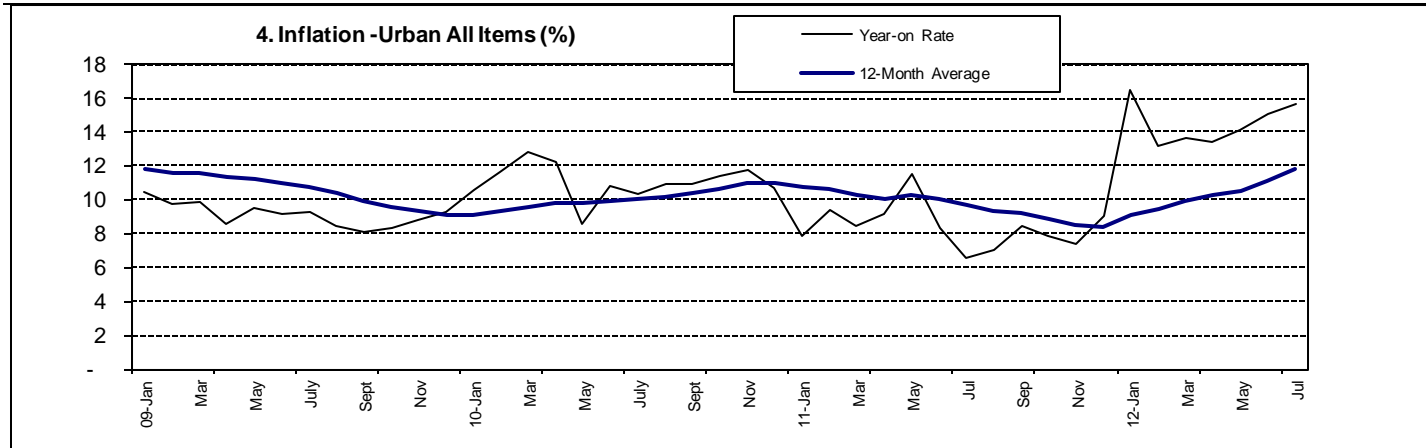


Table 4 Rural Consumer Price Index (Base November 2009 = 100)

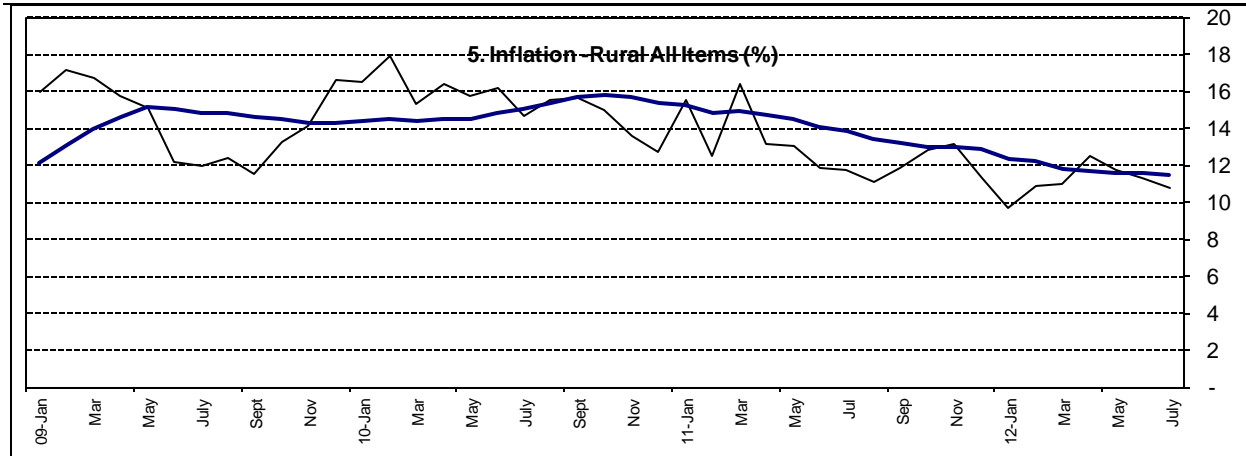
		All Items	All Items less Farm Produce.	All Items less Farm Produce. and Energy	Imported Food	Food	Food & Non Alcoholic Bev.	Alcoholic Beverage, Tobacco and Kola	Clothing and Footwear	Housing Water, Electricity, Gas and Other Fuel	Furnishings & Household Equipment Maintenance.	Health.	Transport	Communication	Recreation & Culture.	Education	Restaurant & Hotels	Miscellaneous Goods & Services	Month-on (%)	Year-on (%)	12-month average (%)
Weights		1000.0	503.1	417.4	113.7	532.3	540.9	10.6	85.7	147.2	50.7	32.2	57.2	4.0	6.7	38.9	10.1	15.8			
2008	Jan	76.7	81.7	78.1		73.7	74.0	90.3	80.5	80.6	71.2	77.5	76.0	67.7	82.8	61.8	68.3	77.4	1.7	6.5	2.9
	Feb	76.4	83.0	81.8		72.7	73.0	87.2	79.5	80.3	71.3	75.8	81.4	67.3	79.5	64.7	70.7	76.1	-0.3	5.5	2.9
	Mar	77.2	78.0	75.4		76.8	77.1	91.4	77.3	76.4	74.5	78.8	71.5	65.4	81.8	64.5	69.8	70.8	1.1	6.6	3.2
	Apr	78.4	79.2	78.0		77.9	78.2	87.8	85.0	77.2	75.5	82.4	82.0	87.6	80.2	62.6	74.4	71.8	1.5	6.7	3.7
	May	80.4	82.3	81.0		79.5	79.7	93.4	87.2	79.6	78.5	84.5	81.9	94.3	81.6	65.7	89.3	82.9	2.6	9.4	4.4
	Jun	84.1	84.6	85.0		83.9	84.1	94.0	90.2	82.4	80.4	87.6	83.4	94.3	82.6	72.4	91.8	82.1	4.6	12.3	5.1
	Jul	86.2	85.9	82.7		86.5	86.6	93.8	90.4	84.8	82.4	90.8	86.6	95.6	85.8	77.2	91.2	88.9	2.5	14.5	6.2
	Aug	87.0	86.1	84.7		87.4	87.5	95.1	93.5	85.5	81.7	89.6	82.5	95.6	88.7	81.0	95.6	84.4	1.0	12.5	7.1
	Sep	88.3	88.2	86.4		88.2	88.3	96.2	93.6	88.3	82.1	90.7	82.5	95.2	89.8	79.7	95.0	85.7	1.4	12.8	8.1
	Oct	87.6	87.4	86.7		87.7	87.8	97.2	94.7	87.2	82.0	92.0	83.4	95.2	89.9	81.1	94.9	89.1	-0.8	15.2	9.2
	Nov	87.6	87.3	86.6		87.7	87.7	97.3	95.1	86.5	81.2	93.8	84.3	95.2	91.1	81.0	95.3	89.9	0.0	16.3	10.3
	Dec	88.2	88.1	88.7		88.3	88.3	97.5	95.2	86.8	81.4	96.2	85.8	95.3	90.5	84.4	97.7	92.2	0.7	17.0	11.4
2009	Jan	88.9	88.5	90.0		89.1	89.1	97.5	96.2	87.1	81.7	97.9	86.6	95.2	91.2	84.5	97.8	92.1	0.8	15.9	12.1
	Feb	89.5	89.5	90.2		89.6	89.6	98.3	95.7	89.0	81.9	99.0	85.6	95.2	89.7	85.4	98.8	93.1	0.7	17.2	13.1
	Mar	90.2	89.8	90.8		90.5	90.5	98.0	96.1	88.8	82.5	99.6	85.7	95.2	90.2	87.0	97.9	94.7	0.7	16.7	13.9
	Apr	90.7	90.2	91.7		91.3	91.3	98.0	96.2	88.5	84.4	102.4	92.0	95.2	90.8	88.9	99.5	95.3	0.6	15.7	14.6
	May	92.6	92.3	93.8		93.3	93.3	98.8	96.5	89.7	84.2	100.2	94.0	95.2	91.9	88.4	98.0	91.3	2.1	15.1	15.1
	June	94.4	93.7	95.1		95.4	95.3	98.6	97.1	93.4	84.8	100.8	89.6	95.2	92.1	88.6	98.2	97.5	1.9	12.2	15.1

Table 4 Rural Consumer Price Index (Base November 2009 = 100)

		All Items	All Items less Farm Produce.	All Items less Farm Produce and Energy	Imported Food	Food	Food & Non Alcoholic Bev.	Alcoholic Beverage, Tobacco and Kola	Clothing and Footwear	Housing Water, Electricity, Gas and Other Fuel	Furnishings & Household Equipment Maintenance.	Health.	Transport	Communication	Recreation & Culture.	Education	Restaurant & Hotels	Miscellaneous Goods & Services	Month-on (%)	Year-on (%)	12-month average (%)
Weights		1000.0	503.1	417.4	113.7	532.3	540.9	10.6	85.7	147.2	50.7	32.2	57.2	4.0	6.7	38.9	10.1	15.8			
	July	96.5	95.5	97.5		97.7	97.7	100.4	95.7	95.9	99.6	102.5	87.2	98.3	94.7	90.4	98.3	99.0	2.3	12.0	14.8
	Aug	97.8	96.1	96.9		98.8	98.7	99.6	98.3	95.6	100.6	103.0	89.9	100.9	96.2	101.3	98.9	100.1	1.3	12.4	14.8
	Sep	98.5	97.4	98.2		99.4	99.3	98.6	98.4	96.8	97.2	103.9	93.2	100.9	95.8	99.8	100.1	99.6	0.7	11.5	14.7
	Oct	99.2	98.4	99.0		100.0	100.0	99.5	98.9	97.9	98.0	104.4	94.6	100.0	96.0	96.6	99.6	98.9	0.7	13.2	14.5
	Nov	100.0	100.0	100.0	100.0	100.0	100.0	100.0	100.0	100.0	100.0	100.0	100.0	100.0	100.0	100.0	100.0	100.0	0.8	14.2	14.3
	Dec	102.8	101.7	102.1	102.3	103.1	103.5	103.5	102.0	99.2	102.4	102.0	101.6	100.6	99.9	102.1	102.0	101.9	2.8	16.6	14.3
2010	Jan	103.6	101.9	102.4	102.2	104.4	104.9	103.6	101.8	98.9	103.9	103.5	102.7	99.5	100.7	103.6	105.5	103.7	0.8	16.5	14.4
	Feb	105.6	103.8	104.7	103.3	106.4	106.9	103.5	103.3	100.6	105.5	104.5	105.3	100.5	99.5	104.3	106.0	105.6	1.9	17.9	14.5
	Mar	104.0	102.8	103.5	102.6	104.6	104.9	104.7	103.3	100.0	105.3	104.0	102.1	100.4	100.1	104.4	104.0	103.0	-1.5	15.3	14.4
	Apr	105.6	103.6	104.7	106.6	106.8	107.2	105.6	104.3	100.8	102.3	103.3	106.8	100.0	98.7	104.7	108.2	105.5	1.5	16.4	14.5
	May	107.2	106.5	107.9	105.4	107.2	107.5	105.3	106.8	104.6	102.3	105.4	106.6	99.4	101.8	111.0	110.7	109.1	1.6	15.8	14.5
	Jun	109.6	107.8	109.2	109.2	111.2	111.5	109.9	109.4	104.4	112.4	108.9	108.4	101.0	101.5	106.4	105.4	109.9	2.2	16.1	14.9
	Jul	110.7	107.6	109.2	109.5	112.6	113.2	109.9	110.2	106.2	109.6	109.2	105.9	101.4	103.1	104.9	103.9	110.7	0.9	14.6	15.1
	Aug	113.0	109.6	110.8	111.4	114.7	115.2	114.2	113.4	108.9	109.9	111.8	107.4	100.4	103.9	104.3	103.7	110.7	2.1	15.6	15.3
	Sep	113.8	111.7	112.7	114.1	115.1	114.5	110.9	112.4	113.1	113.5	113.6	112.2	102.2	106.9	109.0	107.0	113.8	0.7	15.6	15.7
	Oct	114.0	113.5	113.6	113.9	114.4	114.5	113.5	113.9	111.2	116.4	118.1	108.1	104.1	110.0	111.5	110.6	110.5	0.1	15.0	15.8
	Nov	113.6	112.1	111.5	116.5	115.7	115.4	114.0	111.8	113.9	114.8	110.5	112.8	102.7	106.2	107.5	108.5	112.6	-0.3	13.6	15.7
	Dec	115.9	113.8	113.7	117.0	117.1	117.2	113.7	113.6	114.3	114.7	112.6	114.0	103.6	106.6	109.0	108.2	111.5	2.0	12.7	15.4
2011	Jan	119.7	119.5	118.9	120.1	116.5	120.5	113.0	114.0	116.4	114.5	111.1	110.0	101.8	108.5	109.4	108.2	114.5	3.3	15.6	15.3
	Feb	118.8	116.7	116.4	129.4	119.4	120.2	116.1	116.8	114.1	116.6	111.4	121.9	107.4	108.4	109.7	110.1	113.8	-0.8	12.5	14.9
	Mar	121.1	119.6	120.2	120.6	119.9	119.8	115.2	117.3	114.2	116.6	115.0	118.4	107.8	109.2	110.6	109.1	111.9	1.9	16.4	15.0
	Apr	119.4	119.2	119.4	122.6	121.1	120.10	116.4	116.1	125.1	116.0	116.7	116.9	107.2	107.8	111.2	111.9	114.1	-1.3	13.1	14.7
	May	121.2	120.6	120.8	124.4	120.1	120.40	116.9	119.0	125.5	116.7	113.8	115.4	108.1	108.8	112.1	112.0	116.4	1.5	13.0	14.5
	Jun	122.6	122.4	122.8	111.5	121.9	121.49	116.0	118.6	126.0	117.1	118.8	120.1	108.7	109.2	112.6	112.1	120.6	1.1	11.8	14.1

Table 4 Rural Consumer Price Index (Base November 2009 = 100)

		All Items	All Items less Farm Produce.	All Items less Farm Produce. and Energy	Imported Food	Food	Food & Non Alcoholic Bev.	Alcoholic Beverage. Tobacco and Kola	Clothing and Footwear	Housing Water, Electricity, Gas and Other Fuel	Furnishings & Household Equipment Maintenance.	Health.	Transport	Communication	Recreation & Culture.	Education	Restaurant & Hotels	Miscellaneous Goods & Services	Month-on (%)	Year-on (%)	12-month average (%)
Weights		1000.0	503.1	417.4	113.7	532.3	540.9	10.6	85.7	147.2	50.7	32.2	57.2	4.0	6.7	38.9	10.1	15.8			
	Jul	123.6	122.8	123.4	113.3	122.4	122.45	112.5	117.9	126.0	118.2	117.9	122.1	108.5	116.2	112.8	113.1	123.2	0.8	11.7	13.8
	Aug	125.6	123.3	123.8	118.1	126.9	127.0	118.6	119.4	128.4	120.1	119.9	121.8	108.8	110.9	113.2	114.2	125.4	1.6	11.1	13.5
	Sep	127.4	125.3	125.3	119.4	128.2	128.0	118.0	121.2	127.2	118.4	121.3	123.1	108.3	111.0	114.2	114.0	125.2	1.4	11.9	13.2
	Oct	128.6	127.8	128.0	118.1	128.4	127.9	120.1	121.8	131.0	118.8	121.8	123.0	108.6	122.1	114.6	114.8	126.4	0.9	12.8	13.0
	Nov	128.6	127.4	127.3	128.6	129.1	129.6	121.8	122.6	130.5	120.7	122.2	123.7	108.9	121.6	114.6	115.1	129.7	0.0	13.1	13.0
	Dec	129.0	127.1	127.0	128.8	131.1	131.1	122.2	124.1	135.1	120.6	123.4	129.2	108.1	117.9	114.6	117.0	127.1	0.3	11.3	12.8
2012	Jan	131.3	129.9	130.7	128.4	132.4	134.0	126.4	122.3	128.7	120.6	122.2	128.2	111.0	119.2	115.2	117.2	130.8	1.8	9.7	12.3
	Feb	131.6	130.0	130.9	128.4	131.8	131.7	126.4	122.3	128.8	120.6	122.2	128.2	111.0	119.2	115.2	117.2	130.8	0.3	10.9	12.2
	Mar	134.4	137.1	136.5	130.3	134.9	134.7	127.4	132.3	142.7	133.2	130.2	130.0	114.6	117.9	126.7	120.2	131.7	2.1	11.0	11.8
	Apr	134.4	137.0	136.5	131.8	135.0	134.8	127.7	132.0	142.3	133.6	130.7	130.3	115.1	118.3	125.5	121.0	131.8	0.01	12.5	11.7
	May	135.4	138.9	138.5	132.9	136.5	136.3	128.1	132.6	142.6	133.9	131.3	130.7	115.3	118.8	125.7	121.9	132.2	0.74	11.7	11.6
	Jun	136.5	139.8	138.1	133.0	137.4	137.2	128.5	132.6	146.3	134.3	131.6	131.3	115.7	119.0	125.9	122.6	132.5	0.83	11.4	11.6
	Jul	136.9	140.4	138.9	133.3	138.0	137.7	129.0	132.9	146.4	134.2	131.6	131.6	115.8	119.1	125.8	122.9	132.7	0.25	10.7	11.5



**Table 5 Combined Urban And Rural State Consumer Price Index
(Base Period: November 2009 = 100)**

State	Jul-11		Jun-12		Jul-12	
	Food	All Items	Food	All Items	Food	All Items
Abia	107.0	110.8	135.3	137.6	133.6	134.4
Abuja	125.9	122.3	136.7	134.2	138.3	134.8
Adamawa	119.0	116.5	138.0	136.0	137.7	136.8
Akwa Ibom	122.5	121.0	132.1	135.6	129.0	132.6
Anambra	108.5	105.7	133.4	133.3	134.0	135.1
Bauchi	100.2	100.6	133.3	137.0	135.1	145.7
Bayelsa	124.1	119.3	143.7	141.1	141.3	138.8
Benue	123.0	120.7	138.2	138.4	135.2	137.5
Borno	100.3	100.9	134.6	137.9	134.8	139.4
Cross River	122.2	120.7	136.3	135.7	139.4	137.1
Delta	119.5	119.4	135.3	136.0	130.9	134.3
Ebonyi	129.7	121.5	133.4	132.4	134.3	134.0
Edo	122.6	134.5	130.9	146.7	129.7	145.3
Ekiti	115.8	120.2	135.2	133.5	137.5	136.9
Enugu	115.9	115.9	131.5	133.3	135.2	133.2
Gombe	126.4	129.7	137.8	134.3	133.9	134.2
Imo	131.9	121.7	138.8	133.2	140.4	131.6
Jigawa	133.6	129.3	136.9	134.9	134.5	134.1
Kaduna	128.4	125.7	136.1	137.1	137.2	137.9
Kano	132.3	126.5	135.5	134.6	135.2	135.4
Katsina	128.8	119.8	132.9	129.8	134.8	130.2
Kebbi	122.7	122.9	129.7	135.4	131.8	133.0
Kogi	125.7	123.5	136.4	137.8	136.0	137.9
Kwara	114.6	128.4	137.8	155.5	131.5	154.3
Lagos	118.6	118.1	135.0	138.8	138.4	139.2
Nassarawa	124.0	119.7	138.5	137.2	138.6	138.5
Niger	114.6	121.8	136.3	134.5	134.0	135.9
Ogun	113.3	114.2	135.8	140.3	137.9	140.4
Ondo	125.0	123.6	139.5	139.1	141.7	138.6
Osun	117.5	117.6	130.9	131.8	134.8	131.7

Oyo	121.3	121.7	132.5	134.9	138.0	138.5
Plateau	114.4	117.2	127.5	129.8	132.9	136.0
Rivers	120.1	118.3	135.6	135.3	131.9	132.4
Sokoto	114.3	120.5	124.8	133.0	124.4	133.8
Taraba	120.6	122.1	134.4	132.6	136.6	136.5
Yobe	117.2	118.9	140.0	140.6	144.4	142.6
Zamfara	118.1	118.3	134.7	133.9	133.6	132.6

Note: *Indices may not be used for inter-state price comparison because market baskets differ from state to state*