

Transport Fare Watch

(AUGUST 2017)

Report Date: September 2017

Data Source: National Bureau of Statistics



NATIONAL BUREAU OF STATISTICS

Executive Summary

Contents

Average Transport Fare Across States	1
-States Bus Journey Within City, Per Drop Constant Route	3
2	4
-States Bus Journey Intercity, State Route, Charge per person	5
-Air Fare Charge for Specified Routes Single Journey	5
-Journey by Motorcycle (Okada) Per Drop	6
-Waterway Passenger Transport	6
Average Transport Fare by Categories - All States	
Abia	7
Abuja	8
Adamawa	9
Akwa Ibom	10
Anambra	11
Bauchi	12
Bayelsa	13
Benue	14
Borno	15
Cross River	16
Delta	17
Ebonyi	18
Edo	19
Ekiti	20
Enugu	21
Gombe	22
Imo	23
Jigawa	24
Kaduna	25
Kano	26
Katsina	27
Kebbi	28
Kogi	29
Kwara	30
Lagos	31
Nassarawa	32
Niger	33
Ogun	34
Ondo	35
Osun	36
Oyo	37
Plateau	38
Rivers	39
Sokoto	40
Taraba	41
Yobe	42
Zamfara	43
Methodology	44
Acknowledgment and Contact	45

Executive Summary

The transport fare watch report for August 2017 covers the following categories namely bus journey within the city per drop constant route ; bus journey intercity, state route, charge per person; air fare charge for specified routes single journey; journey by motorcycle (okada) per drop; and water way passenger transport.

Average fare paid by commuters for bus journey within the city decreased by 3.45% month-on-month and increased by 40.61% year-on-year to N130.29 in August 2017 from N134.95 in July 2017.

States with highest bus journey fare within city in August 2017 were Cross River (N292.31), Katsina (N250.00) & Ebonyi (N175.00) while States with lowest bus journey fare within city in August 2017 were Borno (N47.50), Enugu (N74.29) & Anambra (N59.29).

Average fare paid by commuters for bus journey intercity decreased by 9.40% month-on-month and increased by 16.57% year-on-year to N1,425.80 in August 2017 from N1,573.74 in July 2017.

States with highest bus journey fare intercity in August 2017 were Abuja (N4,800.00), Adamawa (N2,533.33) & Borno (N2,290.00) while States with lowest bus journey fare within city in August 2017 were Katsina (N912.50), Kogi (N550.00) & Abia (N466.67).

Average fare paid by air passengers for specified routes single journey decreased by 1.23% month-on-month and increased by 32.75% year-on-year to N32,750.00 in August 2017 from N32,144.62 in July 2017. States with highest air fare in August 2017 were Abuja FCT (N39,000.00), Taraba (N40,500.00) & Jigawa (N39,500.00) while States with lowest air fare in August 2017 were Katsina & Kogi (N23,500.00), Ekiti, Nasarawa & Osun (N27,000.00) & Yobe (N28,500.00).

Average fare paid by commuters for journey by motorcycle per drop decreased by 6.69% month-on-month and increased by 13.74% year-on-year to N96.63 in August 2017 from N103.56 in July 2017.

States with highest journey fare by motorcycle per drop in August 2017 were Rivers (N180.54), Edo (N166.25) & Akwa Ibom (N152.00) while states with lowest journey fare by motorcycle per drop in August 2017 were Niger (N54.75), Katsina (N53.57) & Kwara (N50.00).

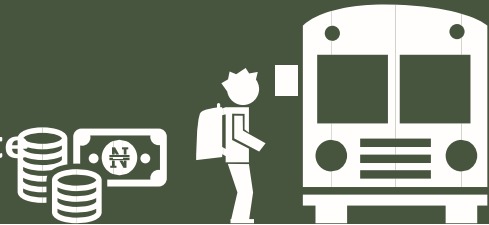
Average fare paid by passengers for water way passenger transport decreased by 3.36% month-on-month and 16.41% year-on-year to N590.06 in August 2017 from N610.56 in July 2017.

States with highest fare by water way passenger transport in August 2017 were Bayelsa (N1,977.78), Rivers (N1,850.00) & Cross River (N1,537.50) while states with lowest fare by water way passenger transport in August 2017 were Kebbi (N240.14), Gombe (N172.89) & Borno (N145.00).

Transport Fare Watch - August 2017

Average Transport Fare Across States

-Bus Journey Within City , Per Drop Constant Route



Average

N130.29

State	Aug-17	YoY %	MoM %
Abia	87.33	-28.18%	-16.52%
Abuja FCT	137.5	65.00%	-45.00%
Adamawa	150	113.84%	-11.76%
Akwa-Ibom	140	-6.67%	-6.67%
Anambra	59.29	-9.59%	-33.06%
Bauchi	100	42.64%	6.38%
Bayelsa	150	113.96%	-7.69%
Benue	150	125.00%	15.38%
Borno	47.5	-5.00%	-30.49%
Cross River	292.31	46.15%	28.02%
Delta	100.83	-32.33%	-15.07%
Ebonyi	175	65.47%	-12.50%
Edo	163.75	36.46%	-8.01%
Ekiti	171.54	63.76%	-10.80%
Enugu	74.29	5.48%	-5.63%
Gombe	118.75	93.09%	11.33%
Imo	119.5	31.10%	-0.42%
Jigawa	150	66.67%	3.45%
Kaduna	127.14	5.73%	-6.21%
Kano	142	39.22%	-5.33%
Katsina	250	150.00%	9.89%
Kebbi	98	96.00%	-2.00%
Kogi	120	139.50%	20.00%
Kwara	150	100.00%	3.45%
Lagos	167.06	17.71%	16.55%
Nasarawa	150	30.43%	-0.88%
Niger	100	0.00%	-4.76%
Ogun	165	36.55%	-2.94%
Ondo	110	10.00%	1.85%
Osun	105	23.01%	1.94%
Oyo	150	47.42%	-4.55%
Plateau	93	3.33%	-0.80%
Rivers	100	0.00%	-0.50%
Sokoto	100	66.67%	-4.86%
Taraba	105.88	77.80%	-3.93%
Yobe	95	64.50%	-2.38%
Zamfara	104.88	78.27%	0.20%

STATES WITH HIGHEST BUS JOURNEY FARE WITHIN CITY IN AUGUST 2017

CROSS RIVER **N292.31**

KATSINA **N250.00**

EBONYI **N175.00**

STATES WITH LOWEST BUS JOURNEY FARE WITHIN CITY IN AUGUST 2017

ENUGU **N74.29**

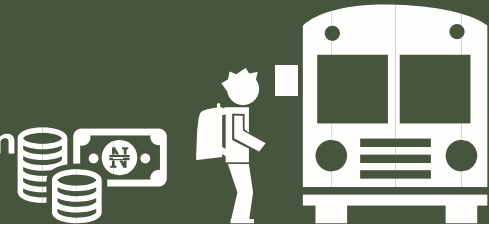
ANAMBRA **N59.29**

BORNO **N47.50**

Transport Fare Watch - August 2017

Average Transport Fare Across States

-Bus Journey Intercity, State Route, Charge Per Person



Average

N1,425.80

State	Aug-17	YoY %	MoM %
Abia	466.67	8.89%	-61.22%
Abuja FCT	4800	4.35%	-4.00%
Adamawa	2533.33	74.71%	-15.56%
Akwa-Ibom	980	26.45%	-17.84%
Anambra	1216.67	93.12%	-7.07%
Bauchi	1200	20.00%	-10.45%
Bayelsa	966.67	10.48%	-17.38%
Benue	2240	63.72%	-0.26%
Borno	2290	44.25%	-7.05%
Cross River	1292.11	7.68%	-3.02%
Delta	1396.67	71.90%	6.87%
Ebonyi	1128.57	83.63%	-1.86%
Edo	1162.5	1.82%	-10.00%
Ekiti	1470	-2.00%	-4.28%
Enugu	1180.56	60.95%	-3.11%
Gombe	1290	51.76%	-4.02%
Imo	1450	97.40%	11.54%
Jigawa	920.83	42.89%	-7.92%
Kaduna	1066.67	3.26%	-16.47%
Kano	1011.54	31.16%	11.36%
Katsina	912.5	45.61%	-8.75%
Kebbi	1357.14	24.70%	-7.99%
Kogi	550	-63.33%	-66.60%
Kwara	1833.33	36.94%	-15.12%
Lagos	1200	-41.14%	-47.97%
Nasarawa	1155	65.00%	-0.65%
Niger	2300	23.77%	-1.83%
Ogun	1260	13.56%	-0.26%
Ondo	1400	-14.78%	-4.21%
Osun	1350	-12.26%	-1.50%
Oyo	1255.57	25.49%	-1.52%
Plateau	1250.78	11.64%	-1.25%
Rivers	1400	-13.93%	-0.40%
Sokoto	1750	9.95%	-1.13%
Taraba	1550	3.32%	-1.59%
Yobe	1012.54	-13.83%	-1.22%
Zamfara	1155	9.92%	1.91%

STATES WITH HIGHEST BUS JOURNEY FARE INTERCITY WITHIN STATE IN AUGUST 2017

ABUJA FCT **N4,800.00**

ADAMAWA **N2,533.33**

NIGER **N2,300.00**

STATES WITH LOWEST BUS JOURNEY FARE INTERCITY WITHIN STATE IN AUGUST 2017

KATSINA **N912.50**

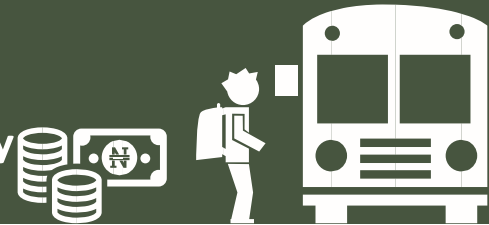
KOGI **N550.00**

ABIA **N466.67**

Transport Fare Watch - August 2017

Average Transport Fare Across States

-Air Fare Charge For Specified Routes Single Journey



Average

N31,750.00

State	Aug-17	YoY %	MoM %
Abia	34,500		-1.43%
Abuja FCT	39,000	62.50%	-11.36%
Adamawa	36,250	50.73%	-2.03%
Akwa-Ibom	34,500	27.78%	-1.43%
Anambra	30,000		0.00%
Bauchi	34,000	15.94%	-2.86%
Bayelsa	32,000		2.89%
Benue	29,800	46.83%	-0.67%
Borno	34,500	15.00%	-1.43%
Cross River	35,250	36.45%	1.44%
Delta	37,000	4.23%	-2.63%
Ebonyi	32,500		-1.52%
Edo	32,667	30.67%	-14.04%
Ekiti	27,000		3.85%
Enugu	30,000	36.36%	-9.09%
Gombe	31,075	24.30%	-2.89%
Imo	31,500	41.09%	1.61%
Jigawa	39,500		-1.25%
Kaduna	29,000	33.23%	3.57%
Kano	32,000	112.44%	-3.03%
Katsina	23,500	54.38%	-2.08%
Kebbi	29,540	38.62%	5.50%
Kogi	23,500		2.17%
Kwara	35,000	39.44%	0.00%
Lagos	34,680	23.60%	-0.91%
Nasarawa	27,000		0.00%
Niger	30,000	42.96%	0.00%
Ogun	30,000		0.00%
Ondo	29,000	16.00%	0.00%
Osun	27,000		0.00%
Oyo	35,000	55.56%	0.00%
Plateau	30,000	49.69%	0.00%
Rivers	30,000	20.00%	0.00%
Sokoto	29,500	31.11%	1.72%
Taraba	40,500	61.66%	0.00%
Yobe	28,500		1.78%
Zamfara	30,000		0.00%

STATES WITH HIGHEST AIR FARE IN AUGUST 2017

TARABA **N40,500**

JIGAWA **N39,500**

ABUJA FCT **N39,000**

STATES WITH LOWEST AIR FARE IN AUGUST 2017

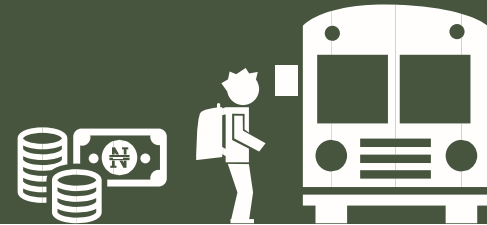
KATSINA & KOGI **N23,500**

EKITI
NASARAWA
OSUN **N27,000**

YOBE **N28,500**

Transport Fare Watch - August 2017

Average Transport Fare Across States -Journey by Motorcycle (Okada) Per Drop



Average

N96.63

State	Aug-17	YoY %	MoM %
Abia	112	3.58%	-29.71%
Abuja FCT	62.5	8.70%	-26.47%
Adamawa	70.87	0.19%	1.24%
Akwa-Ibom	152	-0.87%	-11.11%
Anambra	88.57	-10.68%	-11.43%
Bauchi	68.18	-43.18%	2.27%
Bayelsa	151.43	147.95%	-15.20%
Benue	96.67	1.75%	7.41%
Borno	66.97	33.94%	-4.33%
Cross River	146.67	4.76%	-2.22%
Delta	66.92	-9.97%	4.30%
Ebonyi	125.71	61.34%	-7.37%
Edo	166.25	27.88%	8.66%
Ekiti	55.71	-12.21%	-1.98%
Enugu	131.11	14.89%	-5.83%
Gombe	78	-7.78%	0.29%
Imo	127.27	4.69%	-14.37%
Jigawa	60.67	-22.14%	-14.95%
Kaduna	65.71	-2.02%	-14.50%
Kano	81.82	-1.82%	-15.65%
Katsina	53.57	12.78%	-17.58%
Kebbi	59.41	13.17%	-8.60%
Kogi	95.33	30.85%	-9.21%
Kwara	50	-9.48%	-28.57%
Lagos	105.26	13.46%	-15.63%
Nasarawa	82.5	43.93%	-1.62%
Niger	54.75	-0.95%	-1.35%
Ogun	119.96	46.57%	-0.03%
Ondo	145	45.00%	-1.79%
Osun	118.55	6.54%	2.99%
Oyo	80	-3.36%	0.84%
Plateau	68.28	18.01%	-0.43%
Rivers	180.54	20.36%	-0.73%
Sokoto	108.75	25.00%	-0.49%
Taraba	112.55	50.07%	-0.96%
Yobe	98.78	97.56%	-0.87%
Zamfara	66.88	2.55%	0.78%

STATES WITH HIGHEST MOTOCYCLCLE (OKADA) JOURNEY FARE IMUGUST 2017

RIVERS **N180.54**

EDO **N166.25**

AKWA IBOM **N152.00**

STATES WITH LOWEST MOTOCYCLCLE (OKADA) JOURNEY FARE IMUGUST 2017

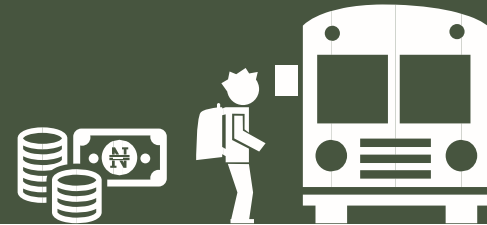
NIGER **N54.75**

KATSINA **N53.57**

KWARA **N50.00**

Transport Fare Watch - August 2017

Average Transport Fare Across States -Waterway Passenger Transport



Average

N590.06

State	Aug-17	YoY %	MoM %
Abia	325.13	-10.48%	-4.44%
Abuja FCT	240.43	47.68%	-4.06%
Adamawa	418.77	27.51%	-0.29%
Akwa-Ibom	1350	12.50%	-10.00%
Anambra	420.33	3.50%	-4.47%
Bauchi	400.87	-77.48%	-2.23%
Bayelsa	1977.78	400.72%	-11.88%
Benue	450	28.57%	-14.29%
Borno	145	17.71%	1.40%
Cross River	1537.5	7.89%	-5.55%
Delta	1450	-6.45%	-8.42%
Ebonyi	340.55	-9.36%	-2.70%
Edo	920.44	81.40%	1.71%
Ekiti	500.45	23.18%	0.09%
Enugu	536.76	40.66%	-2.41%
Gombe	172.89	70.37%	-0.06%
Imo	480.43	20.11%	-2.94%
Jigawa	550.21	9.12%	-1.75%
Kaduna	320.55	205.29%	-5.72%
Kano	367.45	10.61%	-8.14%
Katsina	499.33	22.84%	-0.13%
Kebbi	240.14	-22.54%	2.62%
Kogi	350	15.93%	-4.11%
Kwara	500.77	40.99%	-1.81%
Lagos	500	17.65%	-4.46%
Nasarawa	380	-11.17%	-4.84%
Niger	310	12.92%	2.99%
Ogun	755	61.79%	0.67%
Ondo	670	34.00%	3.08%
Osun	490.89	27.22%	3.35%
Oyo	445	9.60%	-2.20%
Plateau	304.75	50.79%	-0.08%
Rivers	1850	7.25%	5.71%
Sokoto	480	9.89%	0.00%
Taraba	460.75	40.29%	2.39%
Yobe	350	9.19%	0.67%
Zamfara	340	19.73%	0.56%

STATES WITH HIGHEST WATERWAY PASSENGER TRANSPORT IN AUGUST 2017

BAYELSA **N1,977.78**

RIVERS **N1,850.00**

CROSS RIVER **N1,537.50**

STATES WITH LOWEST WATERWAY PASSENGER TRANSPORT IN AUGUST 2017

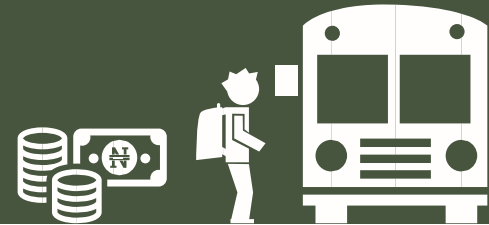
KEBBI **N240.14**

GOMBE **N172.89**

BORNO **N145.00**

Transport Fare Watch - August 2017

Average Transport Fare by Categories -Abia State



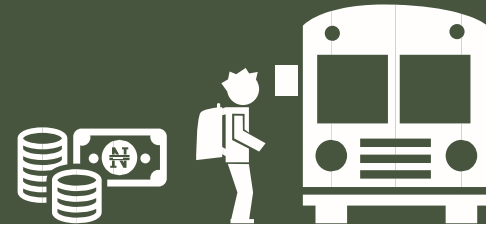
Land Area: 2,440 sq mi

Population: 3,616,382

Months	Bus journey within city, per drop constant route	Bus journey intercity, state route, charge per person	Air fare charge for specified routes single journey	Journey by motorcycle (okada) per drop	Water transport : water way passenger transportation
Aug-16	121.61	428.57	30063	108.13	363.18
Sep-16	114.29	450.65	30126.13	116.43	365.07
Oct-16	109.37	593.09	23463.35	141.19	366.97
Nov-16	128.57	407.14	23512.62	129.44	368.87
Dec-16	130.52	628.57	33562	152.78	370.79
Jan-17	130.65	593.33	33562	155.38	371.16
Feb-17	130.83	683.33	33562	151.25	371.26
Mar-17	122.22	775	34650	125	340.34
Apr-17	116.67	850	35000	152.86	350
May-17	102.86	1093.33	34500	159.09	330.33
Jun-17	100.22	1100.55	35000	159.58	340.17
Jul-17	104.62	1203.33	35000	159.34	340.25
Aug-17	87.33	466.67	34500	112	325.13
YoY %	-28.18	8.89	14.76	3.58	-10.48
MoM %	-16.52	-61.22	-1.43	-29.71	-4.44

Transport Fare Watch - August 2017

Average Transport Fare by Categories -Abuja FCT



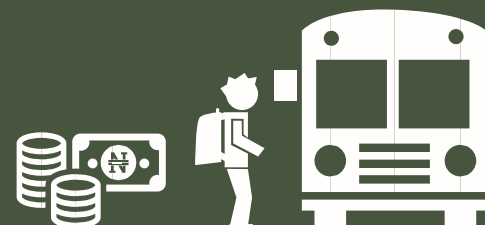
Land Area: 667 sq mi

Population: 3,130,694

Months	Bus journey within city , per drop constant	Bus journey intercity, state route, charge per person	Air fare charge for specified routes single journey	Journey by motorcycle (okada) per drop	Water transport : water way passenger transportation
Aug-16	83.33	4600	24000	57.5	162.8
Sep-16	125	4675	24000	72.5	150
Oct-16	185.74	4567.74	25365.39	80.63	150
Nov-16	250	5000	25418.66	85	150.32
Dec-16	300	5333.33	35000	87.5	250.63
Jan-17	290.55	4960	35000	82.5	220.55
Feb-17	257.5	4566.67	35000	82.67	220.76
Mar-17	262.5	4500	35000	86.67	220.34
Apr-17	255	4825	36000	85	230
May-17	250	4833.33	43000	82.5	250.54
Jun-17	250	4850	44000	85	250.65
Jul-17	250	5000	44000	85	250.6
Aug-17	137.5	4800	39000	62.5	240.43
YoY %	65	4.35	62.5	8.7	47.68
MoM %	-45	-4	-11.36	-26.47	-4.06

Transport Fare Watch - August 2017

Average Transport Fare by Categories -Adamawa State



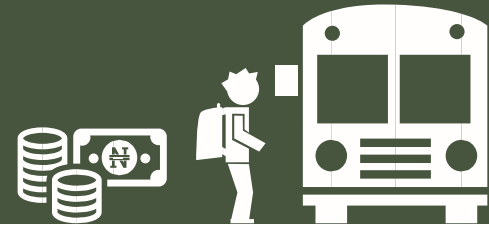
Land Area: 14, 254 sq mi

Population: 4,111,706

Months	Bus journey within city , per drop constant route	Bus journey intercity, state route, charge per person	Air fare charge for specified routes single journey	Journey by motorcycle (okada) per drop	Water transport : water way passenger transportation
Aug-16	70.15	1450	24050.4	70.74	328.43
Sep-16	90	1450	24000	70.89	329.12
Oct-16	92.26	1450	29970.41	70	482.81
Nov-16	100	1450.98	26000	70	483.83
Dec-16	250	3500	37000	70.15	484.84
Jan-17	200	3500.45	37700	70.55	420.55
Feb-17	200	3350	35000	70.45	422.55
Mar-17	200	3266.67	35000	71.54	400.13
Apr-17	200	3500	35000	72	420.55
May-17	150	3266.67	36000	70	410.76
Jun-17	160.55	3000	37500	71.22	415.86
Jul-17	170	3000	37000	70	420
Aug-17	150	2533.33	36250	70.87	418.77
YoY %	113.84	74.71	50.73	0.19	27.51
MoM %	-11.76	-15.56	-2.03	1.24	-0.29

Transport Fare Watch - August 2017

Average Transport Fare by Categories -Akwa Ibom State



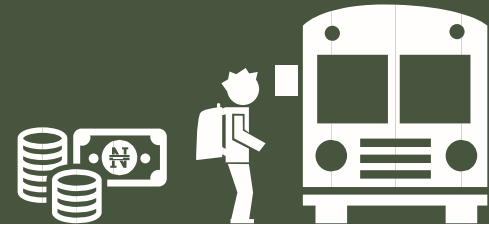
Land Area: 2,734 sq mi

Population: 5,272,029

Months	Bus journey within city , per drop constant route	Bus journey intercity, state route, charge per person	Air fare charge for specified routes single journey	Journey by motorcycle (okada) per drop	Water transport : water way passenger transportation
Aug-16	150	775	27000	153.33	1200
Sep-16	100	1133.33	27000	160	1202.52
Oct-16	114.01	718.29	26406	187.17	1046.84
Nov-16	150	830	27000	162.5	1000
Dec-16	167.5	1133.33	35000	164.17	1500
Jan-17	132.5	900	35000	158.75	1350
Feb-17	150	875	35000	137.14	1350
Mar-17	160	892	35600	164.29	1500
Apr-17	160	1000	35000	174.29	1550
May-17	150	1010.09	35000	152.86	1400
Jun-17	150.57	1020.55	35000	165.55	1466.67
Jul-17	150	1192.86	35000	171	1500
Aug-17	140	980	34500	152	1350
YoY %	-6.67	26.45	27.78	-0.87	12.5
MoM %	-6.67	-17.84	-1.43	-11.11	-10

Transport Fare Watch - August 2017

Average Transport Fare by Categories -Anambra State



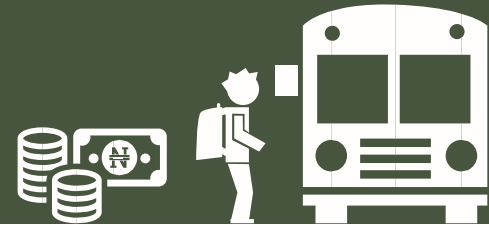
Land Area: 1,870 sq mi

Population: 5,356,592

Months	Bus journey within city , per drop constant route	Bus journey intercity, state route, charge per person	Air fare charge for specified routes single journey	Journey by motorcycle (okada) per drop	Water transport : water way passenger transportation
Aug-16	65.58	630	27094.97	99.17	406.13
Sep-16	103.75	900	27190.87	80	406.98
Oct-16	82.15	811.63	25770.68	100.12	481.37
Nov-16	95.76	806.25	27251.71	100.12	482.38
Dec-16	125.55	1100	27133.99	130.12	483.39
Jan-17	100	900	27152.99	110	464.36
Feb-17	92.73	859.09	27152.99	103.64	464.56
Mar-17	95.45	1009.09	28750.34	108.18	440.89
Apr-17	95.64	1363.64	29500	108.64	450
May-17	82.22	1287.5	29800.44	101.11	425.11
Jun-17	83.88	1298.77	30000	100.55	437.76
Jul-17	88.57	1309.29	30000	100	440
Aug-17	59.29	1216.67	30000	88.57	420.33
YoY %	-9.59	93.12	10.72	-10.68	3.5
MoM %	-33.06	-7.07	0	-11.43	-4.47

Transport Fare Watch - August 2017

Average Transport Fare by Categories -Bauchi State



Land Area: 18,965 sq mi

Population: 6,286,719

Months	Bus journey within city , per drop constant route	Bus journey intercity, state route, charge per person	Air fare charge for specified routes single journey	Journey by motorcycle (okada) per drop	Water transport : water way passenger transportation
Aug-16	70.11	875	24050.4	61.07	394.99
Sep-16	70.21	850.67	24100.91	50	350
Oct-16	75	802.09	25312.39	56.32	481.37
Nov-16	75	725	25365.55	75	400
Dec-16	85	966.67	25418.82	75	480.84
Jan-17	70	850	25418.82	64	410.08
Feb-17	100	850	35000	66.67	420.08
Mar-17	90	1000	35000	60	415.67
Apr-17	90	1150	35000	60	420
May-17	85	1083.33	35000.44	55	400.32
Jun-17	94	1331.25	35250	58.5	410.16
Jul-17	94	1340	35000	66.67	410
Aug-17	100	1200	34000	68.18	400.87
YoY %	42.64	37.14	41.37	11.64	1.49
MoM %	6.38	-10.45	-2.86	2.27	-2.23

Transport Fare Watch - August 2017

Average Transport Fare by Categories -Bayelsa State



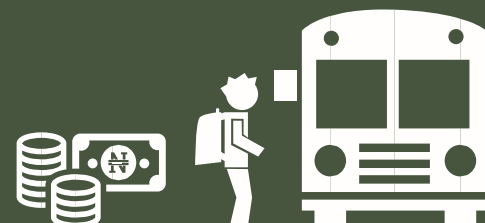
Land Area: 8,150 sq mi

Population: 2,204,648

Months	Bus journey within city , per drop constant route	Bus journey intercity, state route, charge per person	Air fare charge for specified routes single journey	Journey by motorcycle (okada) per drop	Water transport : water way passenger transportation
Aug-16	137.67	1000	29324.7	120	1780
Sep-16	135.25	1000	29386.29	120.25	1783.74
Oct-16	130.25	1248.7	25642.23	120	1965.26
Nov-16	138.25	1000	25400	124.17	2265.76
Dec-16	160.25	1412.5	29500.21	183.33	2565.26
Jan-17	151.43	1157.14	29500.21	150	2228.57
Feb-17	127.43	1011.11	29500.21	150	1933.33
Mar-17	150	997.5	30800.34	185.71	2128.57
Apr-17	150	1071.43	30800.34	186	2133.33
May-17	150	1055.56	30675.22	174.55	2175
Jun-17	150	1150	31100	170	2189
Jul-17	162.5	1170	31100	178.57	2244.44
Aug-17	150	966.67	32000	151.43	1977.78
YoY %	8.96	-3.33	9.12	26.19	11.11
MoM %	-7.69	-17.38	2.89	-15.2	-11.88

Transport Fare Watch - August 2017

Average Transport Fare by Categories -Benue State



Land Area: 13,150 sq m

Population: 5,553,037

Months	Bus journey within city , per drop constant route	Bus journey intercity, state route, charge per person	Air fare charge for specified routes single journey	Journey by motorcycle (okada) per drop	Water transport : water way passenger transportation
Aug-16	66.67	1368.18	20295.86	95	350
Sep-16	66.67	1571.43	20338.48	85.42	425
Oct-16	101.55	1571.43	28770.68	117.55	392.39
Nov-16	111.55	2000	28810.1	119.55	450
Dec-16	147.5	2200	28840.6	120.55	600
Jan-17	127.5	1650	28849.88	116.36	500
Feb-17	132.5	1881.82	28849.88	110	485
Mar-17	125.89	2150.57	29008.13	82.22	500
Apr-17	130	2175.89	30000	95	520
May-17	120.98	2244.44	30000	83	525.76
Jun-17	125.49	2210.17	30000	85	500
Jul-17	130	2245.83	30000	90	525
Aug-17	150	2240	29800	96.67	450
YoY %	125	63.72	46.83	1.75	28.57
MoM %	15.38	-0.26	-0.67	7.41	-14.29

Transport Fare Watch - August 2017

Average Transport Fare by Categories -Borno State



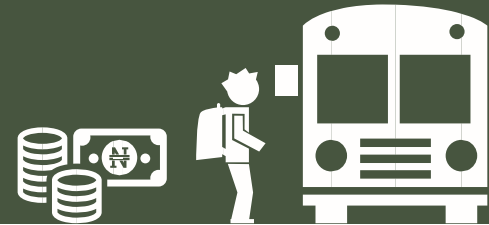
Land Area: 22, 316 sq mi

Population: 5,635,544

Months	Bus journey within city , per drop constant route	Bus journey intercity, state route, charge per person	Air fare charge for specified routes single journey	Journey by motorcycle (okada) per drop	Water transport : water way passenger transportation
Aug-16	50	1587.5	30000	50	123.18
Sep-16	62.5	1500	30063	50	114.92
Oct-16	51.69	1500	29310.66	59.96	110.34
Nov-16	75	1500	35000	75	120.67
Dec-16	85	2000	35000	100	126.7
Jan-17	50	2100	35878.89	80	117.17
Feb-17	68.75	2333.33	35878.89	75	117.89
Mar-17	58	2562.5	33500	70.56	136.15
Apr-17	60	2563.64	35000	70	137
May-17	58.57	2366.67	35000	66.67	150
Jun-17	68.75	2465.15	35000	68.33	143.5
Jul-17	68.33	2463.64	35000	70	143
Aug-17	47.5	2290	34500	66.97	145
YoY %	-5	44.25	15	33.94	17.71
MoM %	-30.49	-7.05	-1.43	-4.33	1.4

Transport Fare Watch - August 2017

Average Transport Fare by Categories -Cross River State



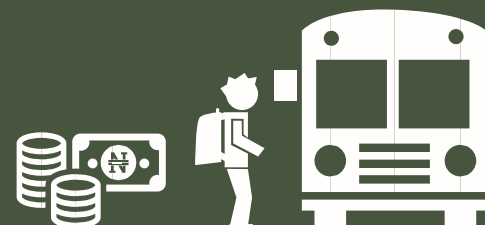
Land Area: 7,782 sq mi

Population: 3,741,838

Months	Bus journey within city , per drop constant route	Bus journey intercity, state route, charge per person	Air fare charge for specified routes single journey	Journey by motorcycle (okada) per drop	Water transport : water way passenger transportation
Aug-16	200	1200	25833.33	140	1425
Sep-16	203.75	1480.36	24750	117.5	1587.5
Oct-16	209.8	1317.79	25077.45	112.17	1658.33
Nov-16	218.75	1316.29	27625	120.83	1865.83
Dec-16	253.75	1364.29	35650	143.96	2216.67
Jan-17	210	1180	35758	116	1750.89
Feb-17	223.33	1316.67	35758	105.88	1700
Mar-17	209.09	1229.17	35333.33	141.67	1500.77
Apr-17	210.54	1393.33	35000	156.67	1650
May-17	211.82	1396.67	34600	142.14	1650
Jun-17	211.18	1308.33	34400	147.78	1655
Jul-17	228.33	1332.35	34750	150	1627.78
Aug-17	292.31	1292.11	35250	146.67	1537.5
YoY %	46.15	7.68	36.45	4.76	7.89
MoM %	28.02	-3.02	1.44	-2.22	-5.55

Transport Fare Watch - August 2017

Average Transport Fare by Categories -Delta State



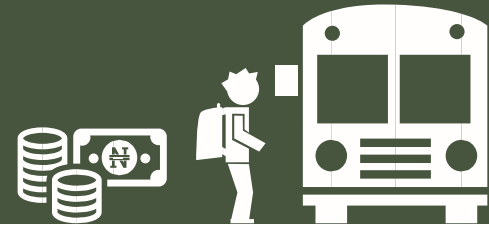
Land Area: 6,833 sq mi

Population: 5,460,311

Months	Bus journey within city , per drop constant route	Bus journey intercity, state route, charge per person	Air fare charge for specified routes single journey	Journey by motorcycle (okada) per drop	Water transport : water way passenger transportation
Aug-16	149	812.5	35500	74.33	1550
Sep-16	149.31	812.5	35574.55	74.49	1550
Oct-16	149.31	812.5	30780.7	90.42	1513.21
Nov-16	186.43	1100	35000	90.42	1513.21
Dec-16	196.43	1200	35500	94.38	2000
Jan-17	153.33	1110	35900	80	1833.33
Feb-17	138.89	1009.09	35000	81.82	1633.33
Mar-17	127.78	1165	35000	81.11	1625
Apr-17	128.25	1290.91	35000	86	1666.67
May-17	121	1213.64	36000	70.91	1580
Jun-17	115.45	1266.67	38000	66.36	1550
Jul-17	118.73	1306.92	38000	64.17	1583.33
Aug-17	100.83	1396.67	37000	66.92	1450
YoY %	-32.33	71.9	4.23	-9.97	-6.45
MoM %	-15.07	6.87	-2.63	4.3	-8.42

Transport Fare Watch - August 2017

Average Transport Fare by Categories -Ebonyi State



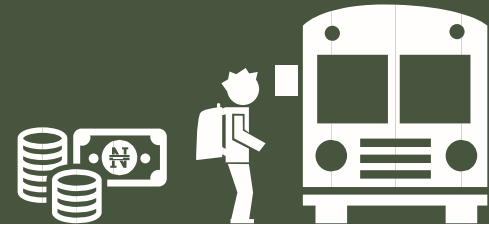
Land Area: 2,136 sq mi

Population: 2,791,167

Months	Bus journey within city , per drop constant route	Bus journey intercity, state route, charge per person	Air fare charge for specified routes single journey	Journey by motorcycle (okada) per drop	Water transport : water way passenger transportation
Aug-16	105.76	614.58	23145.2	77.92	375.73
Sep-16	105.79	823.14	2548.87	107.03	335.94
Oct-16	105.45	725.5	2548.87	107.03	375.07
Nov-16	105.25	725.5	26500	107.03	375.86
Dec-16	150.25	833.33	27500	120.54	406.65
Jan-17	120.75	700	27500	112.86	350
Feb-17	175	750	27000	116.67	350
Mar-17	176	1000	28580.45	128.57	365.34
Apr-17	200	1200	28580.45	130	366
May-17	180.55	1215	33000	125.75	350.3
Jun-17	183.33	1137.5	33038.57143	130.55	350.5
Jul-17	200	1150	33000	135.71	350
Aug-17	175	1128.57	32500	125.71	340.55
YoY %	65.47	83.63	40.42	61.34	-9.36
MoM %	-12.5	-1.86	-1.52	-7.37	-2.7

Transport Fare Watch - August 2017

Average Transport Fare by Categories -Edo State



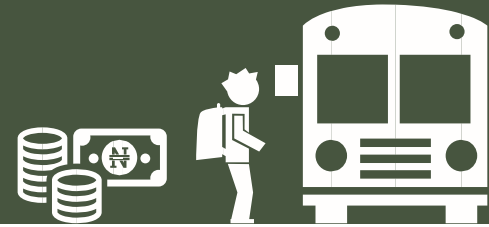
Land Area: 6,873 sq mi

Population: 4,109,499

Months	Bus journey within city , per drop constant route	Bus journey intercity, state route, charge per person	Air fare charge for specified routes single journey	Journey by motorcycle (okada) per drop	Water transport : water way passenger transportation
Aug-16	120	1141.67	25000	130	507.4
Sep-16	120	1144.06	25052.5	130	508.46
Oct-16	120	1188.6	25052.5	130	681.37
Nov-16	120	950.75	40000	152.25	782.38
Dec-16	130	1243.75	40000	172.25	1083.39
Jan-17	125	970	40000	154.67	950.87
Feb-17	126.25	883.33	40000	150.83	890.14
Mar-17	161.25	1127.27	40000	153.33	900.45
Apr-17	160	1433.33	40000	151	900
May-17	178.57	1338.46	38000	146	920.22
Jun-17	172.22	1283.33	38000	151.25	910.11
Jul-17	178	1291.67	38000	153	905
Aug-17	163.75	1162.5	32666.67	166.25	920.44
YoY %	36.46	1.82	30.67	27.88	81.4
MoM %	-8.01	-10	-14.04	8.66	1.71

Transport Fare Watch - August 2017

Average Transport Fare by Categories -Ekiti State



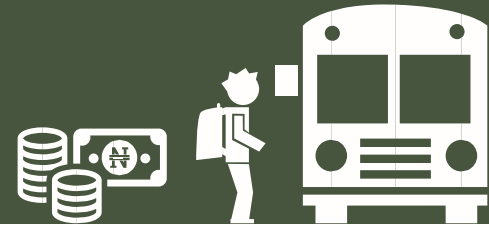
Land Area: 2,453 sq mi

Population: 3,157,552

Months	Bus journey within city , per drop constant route	Bus journey intercity, state route, charge per person	Air fare charge for specified routes single journey	Journey by motorcycle (okada) per drop	Water transport : water way passenger transportation
Aug-16	104.75	1500	24111.83	63.47	406.26
Sep-16	105.05	1507.35	24162.46	63.6	407.12
Oct-16	103.02	1512.78	22770.68	65.37	481.37
Nov-16	100.63	1419.29	22818.5	65.37	482.38
Dec-16	150.25	1863.33	23850.12	65.37	503.39
Jan-17	127.33	1490.91	23850.67	53.89	483.39
Feb-17	125.33	1363.64	23850.67	53.67	482.55
Mar-17	166.67	1460	25580.34	57.33	500.65
Apr-17	194	1627.27	25580.34	57.67	500.65
May-17	186.19	1504.55	26000	56.77	500.98
Jun-17	187.14	1565.38	26057.78	58.96	501.89
Jul-17	192.31	1535.71	26000	56.84	500
Aug-17	171.54	1470	27000	55.71	500.45
YoY %	63.76	-2	11.98	-12.21	23.18
MoM %	-10.8	-4.28	3.85	-1.98	0.09

Transport Fare Watch - August 2017

Average Transport Fare by Categories -Enugu State



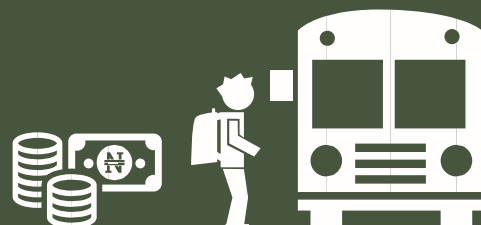
Land Area: 2,765 sq mi

Population: 4,263,786

Months	Bus journey within city , per drop constant route	Bus journey intercity, state route, charge per person	Air fare charge for specified routes single journey	Journey by motorcycle (okada) per drop	Water transport : water way passenger transportation
Aug-16	70.43	733.5	22000	114.12	381.6
Sep-16	99.26	1001.15	21438.17	123.35	444.09
Oct-16	80.95	1000.07	21834.44	126.62	481.37
Nov-16	110.12	1031.96	23500	120.28	482.38
Dec-16	110.12	1422.5	35000	130	683.39
Jan-17	73.68	1053.13	34500	116	550.45
Feb-17	78.89	1053.83	32000	131.5	550.95
Mar-17	72.63	1071.05	33500	137	525.54
Apr-17	75.88	1260	33000	131.43	530
May-17	79.55	1116.67	33500	132.38	542.89
Jun-17	79.13	1211.11	33333.33	131.5	536.45
Jul-17	78.71	1218.46	33000	139.23	550
Aug-17	74.29	1180.56	30000	131.11	536.76
YoY %	5.48	60.95	36.36	14.89	40.66
MoM %	-5.63	-3.11	-9.09	-5.83	-2.41

Transport Fare Watch - August 2017

Average Transport Fare by Categories -Gombe State



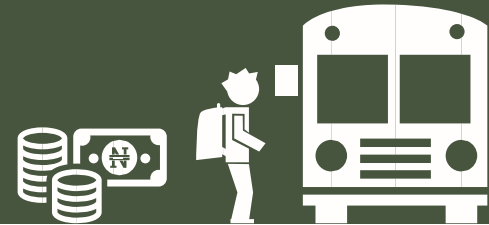
Land Area: 7, 246 sq mi

Population: 3,140,189

Months	Bus journey within city , per drop constant route	Bus journey intercity, state route, charge per person	Air fare charge for specified routes single journey	Journey by motorcycle (okada) per drop	Water transport : water way passenger transportation
Aug-16	61.5	850	25000	84.58	101.48
Sep-16	68.77	1002.86	32203.06	73.92	150
Oct-16	67.65	1200.5	32203.06	80.24	150
Nov-16	75.65	1345	32203.06	74	150
Dec-16	105.87	1500.22	33500.45	85	200.25
Jan-17	99.89	1350	33500.45	77.5	150
Feb-17	83.33	1037.5	33500.45	65.56	150
Mar-17	88.67	1400	33000	62.5	170.56
Apr-17	89	1390	33000	77.78	171
May-17	86.67	1350	33666.67	76.25	171.99
Jun-17	100	1301.67	33070	77.89	173
Jul-17	106.67	1344	32000	77.78	173
Aug-17	118.75	1290	31075	78	172.89
YoY %	93.09	51.76	24.3	-7.78	70.37
MoM %	11.33	-4.02	-2.89	0.29	-0.06

Transport Fare Watch - August 2017

Average Transport Fare by Categories -Imo State



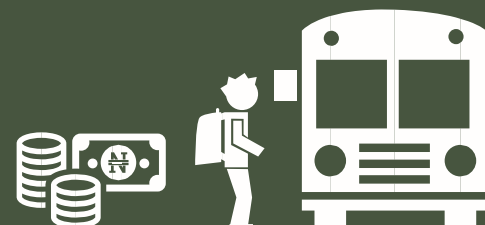
Land Area: 2,140 sq mi

Population: 5,214,833

Months	Bus journey within city , per drop constant route	Bus journey intercity, state route, charge per person	Air fare charge for specified routes single journey	Journey by motorcycle (okada) per drop	Water transport : water way passenger transportation
Aug-16	91.15	734.55	22325.44	121.57	400
Sep-16	103.02	1009.53	22325.44	119.85	444.49
Oct-16	94.96	1009.53	22470.27	120.68	496.24
Nov-16	119.87	1009.53	22517.45	131.29	497.28
Dec-16	120.87	1207.14	29564.74	145.58	598.33
Jan-17	105.63	976.67	29599.39	132.35	450.75
Feb-17	114.62	879.17	29599.39	145	450.86
Mar-17	128.75	1035.71	30000	146.88	456.65
Apr-17	127.78	1231.25	30000	145.26	457
May-17	126.22	1206.25	30500.44	142.63	490.76
Jun-17	122.35	1325	31000	146.67	495
Jul-17	120	1300	31000	148.64	495
Aug-17	119.5	1450	31500	127.27	480.43
YoY %	31.1	97.4	41.09	4.69	20.11
MoM %	-0.42	11.54	1.61	-14.37	-2.94

Transport Fare Watch - August 2017

Average Transport Fare by Categories -Jigawa State



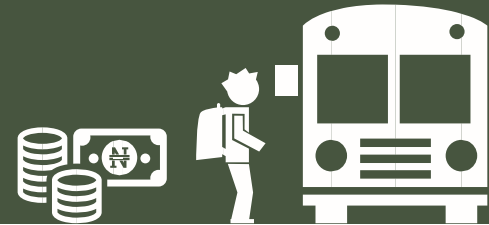
Land Area: 8,940 sq mi

Population: 5,640,592

Months	Bus journey within city , per drop constant route	Bus journey intercity, state route, charge per person	Air fare charge for specified routes single journey	Journey by motorcycle (okada) per drop	Water transport : water way passenger transportation
Aug-16	90	644.44	28000	77.92	504.21
Sep-16	129.35	809.08	28000	71.43	504.21
Oct-16	124.3	851.39	28000	62.3	504.21
Nov-16	130	747.92	40000	71.67	504.21
Dec-16	262.5	1047.92	40000	88.75	683.92
Jan-17	160	972.73	37500.9	75.71	580
Feb-17	160	978.18	40000	76.92	585.55
Mar-17	156.67	900.08	40000.11	71.43	550.87
Apr-17	157.5	950	40000.11	72	555.78
May-17	142	995.45	40800.23	75.33	565.22
Jun-17	145	1030	40400.17	72.14	560.5
Jul-17	145	1000	40000	71.33	560
Aug-17	150	920.83	39500	60.67	550.21
YoY %	66.67	42.89	41.07	-22.14	9.12
MoM %	3.45	-7.92	-1.25	-14.95	-1.75

Transport Fare Watch - August 2017

Average Transport Fare by Categories -Kaduna State



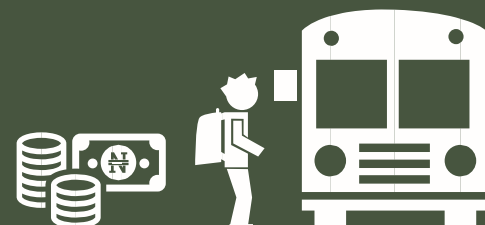
Land Area: 17,781 sq mi

Population: 7,976,735

Months	Bus journey within city , per drop constant route	Bus journey intercity, state route, charge per person	Air fare charge for specified routes single journey	Journey by motorcycle (okada) per drop	Water transport : water way passenger transportation
Aug-16	120.25	1033.04	21767.31	67.07	105
Sep-16	120.25	1330.3	21962.85	81.13	228.81
Oct-16	120.25	1099.22	23210.89	63.92	229.67
Nov-16	153.33	944.44	23259.63	67.88	252.76
Dec-16	165	1245.83	23308.48	72.5	350.85
Jan-17	175	1190.91	23308.48	56	300
Feb-17	155.56	1200	23308.48	70	320.55
Mar-17	130	1177.27	25657.87	66	322.54
Apr-17	132	1320	26580	67.83	323
May-17	126.67	1250	26000.23	76.15	350.11
Jun-17	125.56	1258.33	28000.89	75	336.56
Jul-17	135.56	1276.92	28000	76.86	340
Aug-17	127.14	1066.67	29000	65.71	320.55
YoY %	5.73	3.26	33.23	-2.02	205.29
MoM %	-6.21	-16.47	3.57	-14.5	-5.72

Transport Fare Watch - August 2017

Average Transport Fare by Categories -Kano State



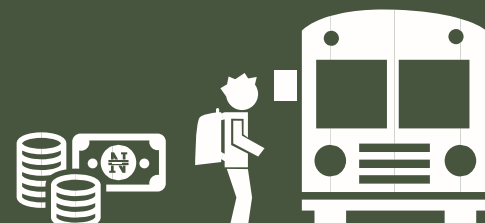
Land Area: 7,773 sq mi

Population: 12,591,871

Months	Bus journey within city , per drop constant route	Bus journey intercity, state route, charge per person	Air fare charge for specified routes single journey	Journey by motorcycle (okada) per drop	Water transport : water way passenger transportation
Aug-16	102	771.25	15063.07	83.33	332.19
Sep-16	103.4	954.16	22981.23	82.28	342.96
Oct-16	100.57	783.53	25211.56	96.24	381.37
Nov-16	111.67	783.33	25264.5	62.73	382.38
Dec-16	150.25	885.35	25317.56	95.28	400
Jan-17	132.5	863.64	25227.56	79.23	370.85
Feb-17	120	850	25227.56	88.89	370.95
Mar-17	136.89	824	28000	109.17	380
Apr-17	137.5	963.64	31000	109.82	382
May-17	146.67	875	33000	100.78	400.88
Jun-17	154	901.11	32000	93.33	391.44
Jul-17	150	908.33	33000	97	400
Aug-17	142	1011.54	32000	81.82	367.45
YoY %	39.22	31.16	112.44	-1.82	10.61
MoM %	-5.33	11.36	-3.03	-15.65	-8.14

Transport Fare Watch - August 2017

Average Transport Fare by Categories -Katsina State



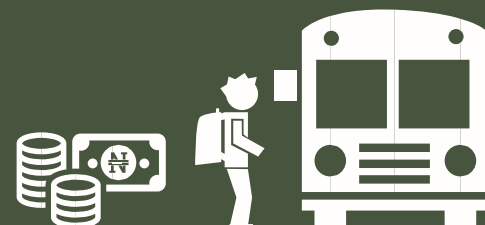
Land Area: 9,341 sq mi

Population: 7,569,751

Months	Bus journey within city , per drop constant route	Bus journey intercity, state route, charge per person	Air fare charge for specified routes single journey	Journey by motorcycle (okada) per drop	Water transport : water way passenger transportation
Aug-16	100	626.67	15221.89	47.5	406.49
Sep-16	94.83	940.02	18438.2	72.93	439.09
Oct-16	113.2	797.15	18720.22	59.67	481.37
Nov-16	233.33	637.5	18759.53	64.38	482.38
Dec-16	233.33	650.25	18798.93	68.58	483.39
Jan-17	100	742.86	18900.93	59.23	483.39
Feb-17	125	950	21000	58.18	485.55
Mar-17	196.67	928.57	22300.33	58.5	488.65
Apr-17	200	930	22500	67.14	490.75
May-17	212.5	900	23450	65.83	500.16
Jun-17	215	1000	24049.38	66.49	495.46
Jul-17	227.5	1000	24000	65	500
Aug-17	250	912.5	23500	53.57	499.33
YoY %	150	45.61	54.38	12.78	22.84
MoM %	9.89	-8.75	-2.08	-17.58	-0.13

Transport Fare Watch - August 2017

Average Transport Fare by Categories -Kebbi State



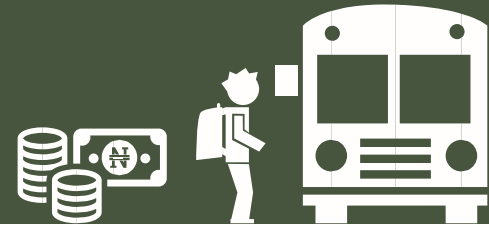
Land Area: 14,200 sq mi

Population: 4,286,319

Months	Bus journey within city , per drop constant route	Bus journey intercity, state route, charge per person	Air fare charge for specified routes single journey	Journey by motorcycle (okada) per drop	Water transport : water way passenger transportation
Aug-16	50	1088.33	21310.65	52.5	310
Sep-16	70.59	1137.2	17852.33	59.94	285.6
Oct-16	70.59	1183.27	18770.68	50.34	232.37
Nov-16	77.5	1016.67	18810.1	71.11	235
Dec-16	105.22	1350	25000	71.11	300
Jan-17	101.67	1275	25000	64.38	250
Feb-17	90	1250	28000	60.59	220
Mar-17	106.67	1346.67	28500.67	65.63	230.66
Apr-17	108.5	1442.86	28600	65.56	231
May-17	100	1537.5	28080	66.88	235.14
Jun-17	105	1457.14	28340	60	233.07
Jul-17	100	1475	28000	65	234
Aug-17	98	1357.14	29540.33	59.41	240.14
YoY %	96	24.7	38.62	13.17	-22.54
MoM %	-2	-7.99	5.5	-8.6	2.62

Transport Fare Watch - August 2017

Average Transport Fare by Categories -Kogi State



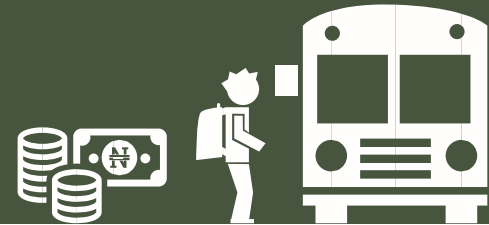
Land Area: 11,519 sq mi

Population: 4,324,074

Months	Bus journey within city , per drop constant route	Bus journey intercity, state route, charge per person	Air fare charge for specified routes single journey	Journey by motorcycle (okada) per drop	Water transport : water way passenger transportation
Aug-16	50.11	1500	20253.33	72.86	301.89
Sep-16	50.21	1503.15	20338.48	73.18	302.53
Oct-16	50.75	1637.61	18360.29	75.94	299.18
Nov-16	52.45	1637.71	18398.85	89.29	299.81
Dec-16	100.75	1750	22000	100	350.43
Jan-17	100	1666.67	22000	74	300
Feb-17	102	1666.67	22000	105	350
Mar-17	100.26	1614.29	22500.65	93.08	350
Apr-17	102.67	1681.25	22500.65	101	380
May-17	100.54	1669.23	23400	98.5	350
Jun-17	101.6	1630	23163.57	100	365
Jul-17	100	1646.5	23000	105	365
Aug-17	120	550	23500	95.33	350
YoY %	139.5	-63.33	16.03	30.85	15.93
MoM %	20	-66.6	2.17	-9.21	-4.11

Transport Fare Watch - August 2017

Average Transport Fare by Categories -Kwara State



Land Area: 14, 218 sq mi

Population: 3,086,249

Months	Bus journey within city , per drop constant route	Bus journey intercity, state route, charge per person	Air fare charge for specified routes single journey	Journey by motorcycle (okada) per drop	Water transport : water way passenger transportation
Aug-16	75	1338.75	25100	55.24	355.18
Sep-16	75	1338.75	25152.71	55.35	355.92
Oct-16	101.31	1500.1	25862.13	67.85	361.19
Nov-16	100	1500.1	25000	82.14	361.95
Dec-16	200	2150	35000	82.14	502.71
Jan-17	125	1800.75	35000	68.57	500
Feb-17	120	1800	35000	61.11	500
Mar-17	150	2000	35000	62.14	501.55
Apr-17	166.67	2040	35000	63.64	503
May-17	143.33	2166.67	33600.32	60.91	510.43
Jun-17	144.6	2116.67	35000	70.91	512.55
Jul-17	145	2160	35000	70	510
Aug-17	150	1833.33	35000	50	500.77
YoY %	100	36.94	39.44	-9.48	40.99
MoM %	3.45	-15.12	0	-28.57	-1.81

Transport Fare Watch - August 2017

Average Transport Fare by Categories -Lagos State



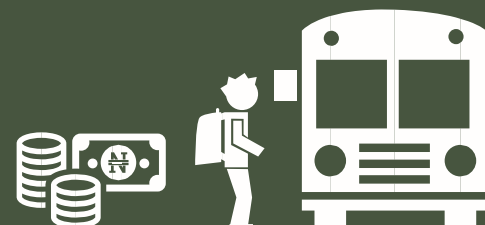
Land Area: 1,381 sq mi

Population: 12,100,616

Months	Bus journey within city , per drop constant route	Bus journey intercity, state route, charge per person	Air fare charge for specified routes single journey	Journey by motorcycle (okada) per drop	Water transport : water way passenger transportation
Aug-16	141.92	2038.89	28058.8	92.78	425
Sep-16	141.92	2043.17	28117.72	92.97	425.89
Oct-16	140.95	1819.48	28724.6	98.8	432.67
Nov-16	168.5	1819.48	28784.93	92.86	450
Dec-16	178.5	2443.17	30000	150.9	550
Jan-17	150.59	2207.14	30000	120	500
Feb-17	143.53	2007.24	30000	121.43	500
Mar-17	140.95	2036.84	32500.45	127.5	500
Apr-17	148.33	2194.44	32500	128.67	500
May-17	143.82	2224.24	33000.13	121.43	537.5
Jun-17	140.56	2377.5	35087	125.55	518.75
Jul-17	143.33	2306.25	35000	124.76	523.33
Aug-17	167.06	1200	34680	105.26	500
YoY %	17.71	-41.14	23.6	13.46	17.65
MoM %	16.55	-47.97	-0.91	-15.63	-4.46

Transport Fare Watch - August 2017

Average Transport Fare by Categories -Nasarawa State



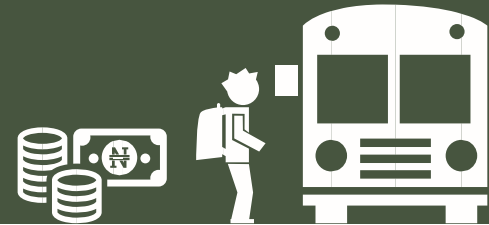
Land Area: 10, 470 sq mi

Population: 2,439,113

Months	Bus journey within city , per drop constant route	Bus journey intercity, state route, charge per person	Air fare charge for specified routes single journey	Journey by motorcycle (okada) per drop	Water transport : water way passenger transportation
Aug-16	115	700	22122.49	57.32	427.8
Sep-16	115.51	700	22168.94	57.44	428.69
Oct-16	115.51	725.9	22468.79	87.77	482.38
Nov-16	115.36	750.85	24500.24	87.77	483.39
Dec-16	180.58	1033.33	26500.88	90.77	494.41
Jan-17	150	950	26500.09	75	450
Feb-17	103.33	980	26500.09	71.11	350
Mar-17	100	1000	27000	71.82	385.78
Apr-17	150	1280	27000	72.67	390
May-17	158.78	1180	27600.66	79.29	400.55
Jun-17	150	1141.67	27063.57	80.55	401.79
Jul-17	151.33	1162.5	27000	83.86	399.34
Aug-17	150	1155	27000	82.5	380
YoY %	30.43	65	22.05	43.93	-11.17
MoM %	-0.88	-0.65	0	-1.62	-4.84

Transport Fare Watch - August 2017

Average Transport Fare by Categories -Niger State



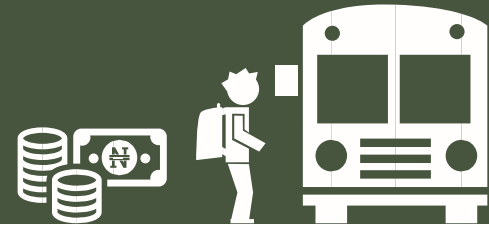
Land Area: 10, 470 sq mi

Population: 5,343,260

Months	Bus journey within city , per drop constant route	Bus journey intercity, state route, charge per person	Air fare charge for specified routes single journey	Journey by motorcycle (okada) per drop	Water transport : water way passenger transportation
Aug-16	100	1858.33	20984.88	55.28	274.54
Sep-16	100	1858.33	21028.95	55.39	275.12
Oct-16	100	1942.17	21028.95	67.52	275.07
Nov-16	100	1942.17	21028.95	67.55	275.65
Dec-16	120	1992.17	26779.42	87.52	296.22
Jan-17	100	1816.67	26779.42	65	250.55
Feb-17	107.5	2337.5	26779.42	58	248.65
Mar-17	120	2277.78	27870.45	57.78	300
Apr-17	120	2320	28000	58.57	300
May-17	120	2388.89	28500.34	52.22	298.22
Jun-17	110	2344.44	30052	55.4	299.11
Jul-17	105	2342.86	30000	55.5	301
Aug-17	100	2300	30000	54.75	310
YoY %	0	23.77	42.96	-0.95	12.92
MoM %	-4.76	-1.83	0	-1.35	2.99

Transport Fare Watch - August 2017

Average Transport Fare by Categories -Ogun State



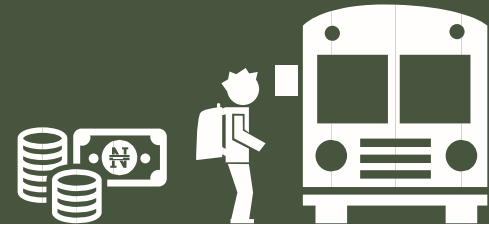
Land Area: 6,556.23 sq mi

Population: 5,024,191

Months	Bus journey within city , per drop constant route	Bus journey intercity, state route, charge per person	Air fare charge for specified routes single journey	Journey by motorcycle (okada) per drop	Water transport : water way passenger transportation
Aug-16	120.83	1109.52	24862.43	81.85	466.67
Sep-16	131.23	1109.52	24914.64	82.02	467.65
Oct-16	135	1349.99	24770.68	84.8	494.32
Nov-16	136.55	1349.99	24822.7	81.86	495.85
Dec-16	200	1550.56	26500.65	89.92	500
Jan-17	150.11	1350	26500	88.33	498.88
Feb-17	127.5	1300	26500	82.78	475
Mar-17	156.67	1297.5	27000	82.11	550
Apr-17	166.67	1447.06	27000	92.22	600
May-17	172	1312.07	27540.22	107.27	750
Jun-17	169.33	1267.65	30000	117.11	750
Jul-17	170	1263.33	30000	120	750
Aug-17	165	1260	30000	119.96	755
YoY %	36.55	13.56	20.66	46.57	61.79
MoM %	-2.94	-0.26	0	-0.03	0.67

Transport Fare Watch - August 2017

Average Transport Fare by Categories -Ondo State



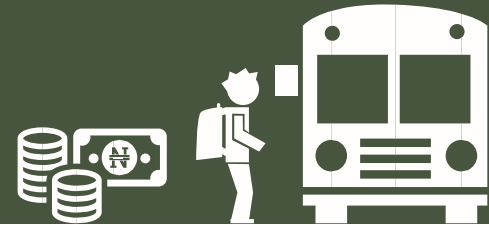
Land Area: 6,000 sq mi

Population: 4,515,660

Months	Bus journey within city , per drop constant route	Bus journey intercity, state route, charge per person	Air fare charge for specified routes single journey	Journey by motorcycle (okada) per drop	Water transport : water way passenger transportation
Aug-16	100	1642.86	25000	100	500
Sep-16	100.25	1649.46	25000	100	501.05
Oct-16	102.55	1661.32	26271.68	100	532.38
Nov-16	108.22	1677.5	26326.85	100	532.38
Dec-16	140.55	1807.5	26382.14	155.25	632.38
Jan-17	120.55	1515.38	26382.14	126.47	570
Feb-17	81.82	1553.85	26000	125.88	600
Mar-17	108.33	1411.54	30000	113.81	600
Apr-17	109	1543.75	30000	116.96	600
May-17	106.11	1498.15	29800.54	106.84	600
Jun-17	106.67	1475	29000	136.5	650
Jul-17	108	1461.54	29000	147.65	650
Aug-17	110	1400	29000	145	670
YoY %	10	-14.78	16	45	34
MoM %	1.85	-4.21	0	-1.79	3.08

Transport Fare Watch - August 2017

Average Transport Fare by Categories -Osun State



Land Area: 3,572 sq mi

Population: 4,536,877

Months	Bus journey within city , per drop constant route	Bus journey intercity, state route, charge per person	Air fare charge for specified routes single journey	Journey by motorcycle (okada) per drop	Water transport : water way passenger transportation
Aug-16	85.36	1538.61	24050.59	111.28	385.85
Sep-16	85.54	1538.61	24101.1	111.51	386.67
Oct-16	85.54	1538.7	24101.1	118.77	481.37
Nov-16	100.25	1538.78	24101.1	118.77	482.38
Dec-16	120.5	1638.61	24101.1	128.77	553.39
Jan-17	111.11	1576.47	24001.1	117.22	483.39
Feb-17	105	1441.18	24001.1	113.89	483.4
Mar-17	106.92	1305.26	25000	117.05	460.23
Apr-17	106.62	1400	25500	118.29	470
May-17	103.08	1416.41	25400	114.5	480.21
Jun-17	108.25	1309.38	27000	116.5	475.11
Jul-17	103	1370.59	27000	115.11	475
Aug-17	105	1350	27000	118.55	490.89
YoY %	23.01	-12.26	12.26	6.54	27.22
MoM %	1.94	-1.5	0	2.99	3.35

Transport Fare Watch - August 2017

Average Transport Fare by Categories -Oyo State



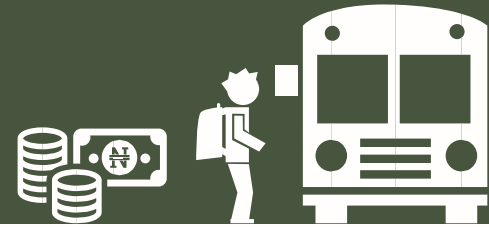
Land Area: 10,986 sq mi

Population: 7,540,300

Months	Bus journey within city , per drop constant route	Bus journey intercity, state route, charge per person	Air fare charge for specified routes single journey	Journey by motorcycle (okada) per drop	Water transport : water way passenger transportation
Aug-16	101.75	1000.5	22500	82.78	406.03
Sep-16	101.96	1150.25	22547.25	82.95	406.88
Oct-16	118.58	1150.25	27045	72.61	481.37
Nov-16	118.78	1150.25	30000	73.18	481.37
Dec-16	158.58	1550.25	30000	73.18	501.37
Jan-17	143.64	980	30000	62.38	455.85
Feb-17	151.82	1055	30000	61.43	455.89
Mar-17	157.5	1093.75	30000	70	453.76
Apr-17	160	1100	30000	73.81	456.8
May-17	155.71	1157.14	35000	74.94	450.11
Jun-17	154.55	1245.24	35000	74	455.75
Jul-17	157.14	1275	35000	79.33	455
Aug-17	150	1255.57	35000	80	445
YoY %	47.42	25.49	55.56	-3.36	9.6
MoM %	-4.55	-1.52	0	0.84	-2.2

Transport Fare Watch - August 2017

Average Transport Fare by Categories -Plateau State



Land Area: 11, 936 sq mi

Population: 4,075,392

Months	Bus journey within city , per drop constant route	Bus journey intercity, state route, charge per person	Air fare charge for specified routes single journey	Journey by motorcycle (okada) per drop	Water transport : water way passenger transportation
Aug-16	90	1120.35	20042	57.86	202.11
Sep-16	90.19	1120.35	20084.09	57.98	202.53
Oct-16	88.65	1125.22	24054.36	61.19	223.43
Nov-16	116.67	1125.22	24104.88	82	234.01
Dec-16	126.67	1500.33	25550.21	83.33	254.58
Jan-17	110	1200	25550.21	53.33	245.68
Feb-17	78.57	1400	25550.21	62.86	248.55
Mar-17	80	1428.57	25000	62	300.11
Apr-17	91.25	1455.56	25000	63.5	300.12
May-17	92.5	1411.11	30000	68.57	308.34
Jun-17	83.75	1311.11	30000	63	304.23
Jul-17	93.75	1266.67	30000	68.57	305
Aug-17	93	1250.78	30000	68.28	304.75
YoY %	3.33	11.64	49.69	18.01	50.79
MoM %	-0.8	-1.25	0	-0.43	-0.08

Transport Fare Watch - August 2017

Average Transport Fare by Categories -Rivers State



Land Area: 4,277 sq mi

Population: 7,023,942

Months	Bus journey within city , per drop constant route	Bus journey intercity, state route, charge per person	Air fare charge for specified routes single journey	Journey by motorcycle (okada) per drop	Water transport : water way passenger transportation
Aug-16	100	1626.67	25000	150	1725
Sep-16	100	1646.67	25052.5	150.32	1727.36
Oct-16	104.44	1635.65	24425.55	150.32	1727.36
Nov-16	105.68	1850.27	24476.84	150.32	1727.36
Dec-16	156.07	2050.27	28000	200.32	2025
Jan-17	128.33	1535.71	28000	153.85	1533.33
Feb-17	121.25	1520.83	28000	152.5	1333.33
Mar-17	100	1456.67	30000	179.17	1440
Apr-17	103.33	1523.08	30000	184.55	1600
May-17	105	1517.65	29700.34	196.67	1675
Jun-17	105.5	1394.12	30000	184.62	1733.33
Jul-17	100.5	1405.56	30000	181.88	1750
Aug-17	100	1400	30000	180.54	1850
YoY %	0	-13.93	20	20.36	7.25
MoM %	-0.5	-0.4	0	-0.73	5.71

Transport Fare Watch - August 2017

Average Transport Fare by Categories -Sokoto State



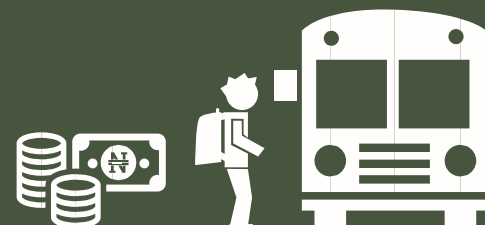
Land Area: 10,028 sq mi

Population: 4,831,152

Months	Bus journey within city , per drop constant route	Bus journey intercity, state route, charge per person	Air fare charge for specified routes single journey	Journey by motorcycle (okada) per drop	Water transport : water way passenger transportation
Aug-16	60	1591.67	22500	87	436.82
Sep-16	75.16	1591.67	27150.23	86.88	439.09
Oct-16	75.55	1547	25828	80.64	481.37
Nov-16	80	1575.47	27000	90.69	482.38
Dec-16	85	1747	30000	100.54	499.89
Jan-17	75	1600	29500.09	75.71	470.76
Feb-17	100	1466.67	29000	73.33	470.96
Mar-17	100	1850	29500	100	473.89
Apr-17	112.5	1875	30000	102.33	474.5
May-17	110	1870	29000	108.57	480.44
Jun-17	100	1733.33	29000	109	480.75
Jul-17	105.11	1770	29000.33	109.29	480
Aug-17	100	1750	29500	108.75	480
YoY %	66.67	9.95	31.11	25	9.89
MoM %	-4.86	-1.13	1.72	-0.49	0

Transport Fare Watch - August 2017

Average Transport Fare by Categories -Taraba State



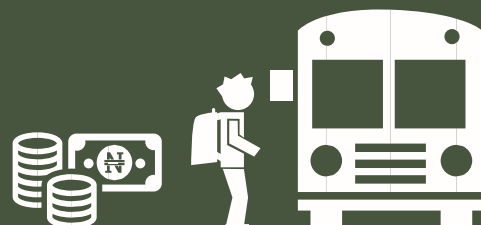
Land Area: 21, 032 sq mi

Population: 2,968,132

Months	Bus journey within city , per drop constant route	Bus journey intercity, state route, charge per person	Air fare charge for specified routes single journey	Journey by motorcycle (okada) per drop	Water transport : water way passenger transportation
Aug-16	59.55	1500.21	25052.5	75	328.43
Sep-16	57.18	1550.21	25052.5	75	343.12
Oct-16	58.78	1565.55	25052.5	98.74	383.37
Nov-16	75	1500.21	35000	98.74	382.58
Dec-16	80.68	1800.54	35000	116.25	453.99
Jan-17	75	1744.44	35000	100.25	433.39
Feb-17	100	1466.67	35000	104.29	440.35
Mar-17	100.98	1428.57	35540	108.57	400.23
Apr-17	101	1572.73	35000	109	420.56
May-17	100	1581.82	40000	112.73	420
Jun-17	100	1500	40550	115.8	425.88
Jul-17	110.21	1575	40500	113.64	450
Aug-17	105.88	1550	40500	112.55	460.75
YoY %	77.8	3.32	61.66	50.07	40.29
MoM %	-3.93	-1.59	0	-0.96	2.39

Transport Fare Watch - August 2017

Average Transport Fare by Categories -Yobe State



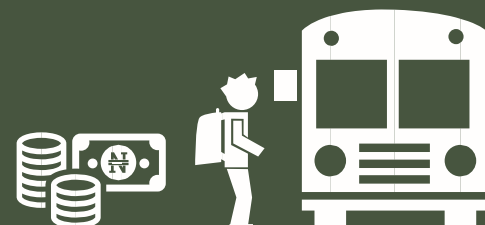
Land Area: 17, 568 sq mi

Population: 3,163,747

Months	Bus journey within city , per drop constant route	Bus journey intercity, state route, charge per person	Air fare charge for specified routes single journey	Journey by motorcycle (okada) per drop	Water transport : water way passenger transportation
Aug-16	57.75	1175	25369.82	50	320.54
Sep-16	58.32	1151.16	25361.19	50.42	325.22
Oct-16	59.32	1199.48	25361.19	50.42	331.37
Nov-16	60.32	1199.98	25361.19	50.42	345.55
Dec-16	75.24	1450	26584.03	81.97	380.45
Jan-17	65	1233.33	26584.93	75.55	340.55
Feb-17	60	1125	26584.93	75.55	340.5
Mar-17	60	1000	26560.12	70	350.43
Apr-17	62.5	1100	26570	70.34	355
May-17	75	1100	27000	100	340.22
Jun-17	84	1100	28000	100	350
Jul-17	97.32	1025	28000.45	99.65	347.66
Aug-17	95	1012.54	28500	98.78	350
YoY %	64.5	-13.83	12.34	97.56	9.19
MoM %	-2.38	-1.22	1.78	-0.87	0.67

Transport Fare Watch - August 2017

Average Transport Fare by Categories -Zamfara State



Land Area: 15,352 sq mi

Population: 4,353,533

Months	Bus journey within city , per drop constant route	Bus journey intercity, state route, charge per person	Air fare charge for specified routes single journey	Journey by motorcycle (okada) per drop	Water transport : water way passenger transportation
Aug-16	58.83	1050.72	22325.44	65.22	283.97
Sep-16	57.89	1150.22	22325.44	67.49	283.97
Oct-16	58.83	1150.88	22770.68	67.49	308.22
Nov-16	59.26	1150.24	22818.5	73.81	308.87
Dec-16	90.26	1800.15	23866.42	83.81	359.51
Jan-17	84.29	1270	23870.42	65.29	310.55
Feb-17	94.44	1186.67	24050.55	54.09	315.45
Mar-17	102.22	1240	25500.11	52.22	320.33
Apr-17	103.67	1255.38	25500.11	53	325
May-17	99.65	1261.54	26000	56.25	324.89
Jun-17	105	1290	31000	65.89	339
Jul-17	104.67	1133.33	30000	66.36	338.11
Aug-17	104.88	1155	30000	66.88	340
YoY %	78.27	9.92	34.38	2.55	19.73
MoM %	0.2	1.91	0	0.78	0.56

Methodology

Field work is done solely by over 700 NBS Staff in all States of the federation supported by supervisors who are monitored by internal and external observers.

Fuel Prices are collected across all the 774 local governments across all States and the FCT from over 10,000 respondents and locations and reflect actual prices households state they actually bought those fuels together with the prices reportedly sold by the fuel suppliers.

The average of all these prices is then reported for each state and the average for the country is the average for the state.

NBS audit team subsequently conducts randomly selected verification of prices recorded.

Acknowledgements/Contacts

Acknowledgements

44

We acknowledge our technical partners, Proshare in the design, concept and production of this publication.



Contact Us



@nigerianstat



Head Office Address

+234 803 386 5388
District, FCT, Abuja Nigeria.



NBSNigeria



www.nigerianstat.gov.ng



feedback@nigerianstat.gov.ng

762, Independence Avenue, Central Business

