

## CONSUMER PRICE INDEX

(BASE PERIOD NOVEMBER 2009 = 100)



**NATIONAL BUREAU OF STATISTICS**

## **BRIEF METHODOLOGY:**

The CPI measures the average change over time in prices of goods and services consumed by people for day-to-day living. The construction of the CPI combines economic theory, sampling and other statistical techniques using data from other surveys to produce a weighted measure of average price changes in the Nigerian economy. The weighting occurs to capture the importance of the selected commodities in the entire index. The production of the CPI requires skills of economists, statisticians, computer scientists, data collectors and others.

Key in the construction of the price index is the selection of the market basket of goods and services. Every month, 10534 informants spread across the country provide price data for the computation of the CPI. The market items currently comprises of 740 goods and services regularly priced.

The first stage in the calculation of the CPI is the collection of prices on each item (740 goods and services) from outlets in each sector (rural or urban) for each state. Prices are then averaged for each item according to sector across the state. Next step is to use the average price to calculate basic index for each commodity: The current year price of each commodity are compared with a base year's price to obtain a relative price.

Next we use the Laspeyres formula to compute aggregated index for each class (which has a multitude of commodities which have similar consumption purpose): Here the sum of the product of weights (obtained from the expenditure survey) and relative prices for each item is divided by the sum of the weight of the items in that class, and the result multiplied by 100 gives the required index number. This index number is still classified according to the urban or rural classification sector for each of the 36 states and the FCT. This yields 85 classes then 48 groups which are then reclassified into 12 Divisions and then the derived:

1. The country composite index
2. The Urban Composite index
3. The Rural Composite index
4. The Combined Urban and Rural State Composite index

The survey methodology generates 3774 all items indices for all states and the FCT.

This edition of the Statistical News contains the revised Consumer Price Index (CPI) based on Nigeria Living Standard Survey (NLSS) 2003/2004. The consumption expenditure data were re-valued to November 2009, which is the base period for the revised CPI.

The May 2003 and September 1985 based indices are being continued using factors derived from the new CPI. All of these indices will yield the same price change for any commodity group contained in all the series. A new sub index – Imported Food Index- is available in the revised CPI.

**Note: The urban and rural indices were weighted with the ratio of their populations to the national i.e. 0.455 and 0.545 respectively to compute the composite indices at the 12 COICOP functions and all items levels. This may cause variance between a recalculated all items index using the weights published on table 2 and the published all items index because the published weights were computed only from consumption expenditure survey result. The following breakdown highlights a non-exhaustive list of the components of the current CPI:**

#### **FOOD AND NON ALCOHOLIC BEVERAGES**

- Food
- Bread and cereals
- Meat
- Fish
- Milk, cheese and eggs
- Oils and fats
- Fruit
- Vegetables
- Potatoes, Yam & other tubers
- Food products nec
- Coffee, tea and cocoa
- Soft drinks

#### **ALCOHOLIC BEVERAGES, TOBACCO**

- Spirits
- Wine
- Tobacco
- Narcotics

#### **CLOTHING AND FOOTWEAR**

- Clothing materials, other articles of clothing
- Garments
- Cleaning, repair and hire of clothing
- Shoes and other footwear
- Repair and hire of footwear

#### **HOUSING, WATER, ELECTRICITY, GAS**

- Actual and imputed rentals for housing
- Water supply
- Miscellaneous services relating to the dwelling
- Electricity
- Gas
- Liquid fuel
- Solid fuels

#### **FURNISHINGS, HOUSEHOLD EQUIPMENT**

- Furniture and furnishings
- Carpets and other floor coverings
- Repair of Furniture
- Household textiles
- Major household appliances whether electric or not

---

Repair of household appliances  
Glassware, tableware and household utensils  
Non-durable household goods  
Domestic services and household services

**HEALTH**

Pharmaceutical products  
Medical services  
Dental services  
Paramedical services  
Hospital services

**TRANSPORT**

Motor cars  
Motor cycles  
Bicycles  
Vehicle spare parts  
Fuels and lubricants for personal transportation  
Maintenance and repair of personal transport  
Passenger transport by road  
Passenger transport by air  
Passenger transport by sea and inland waterways

**COMMUNICATION**

Postal services  
Telephone and telefax equipment  
Telephone and telefax services

**RECREATION AND CULTURE**

Audio-visual, photographic and information  
Photographic development  
Musical instrument  
Recreational and sporting services  
Games of chance

**EDUCATION**

Books & stationery

**RESTAURANTS AND HOTELS**

Catering services  
Accommodation services

**MISCELLANEOUS GOODS AND SERVICES**

Hairdressing salons and personal grooming  
Appliances, articles and products for personal care  
Jewellery, clocks and watches  
Insurance  
Other services.  
Imported Food

---

## **ALL ITEMS INDEX**

The Composite Consumer Price Index which measures inflation rose to 12.1 percent year-on-year in March 2012. This figure is 0.2 percentage points higher than 11.9 percent recorded in the previous month. The monthly composite CPI was higher by 1.6 percent when compared with February 2012. The increase in the headline index, composed of the core and food indices, partially was due to the planting season which increased the price of food products in the market, and an increase in prices in the economy. However, this was moderated by lack of liquidity in the economy due to the delay in the monthly FAAC.

The urban inflation rate was 13.7 percent year-on-year while the rural figure was 11.0 for March 2012. The urban All Items index increased by 1.2 percent on month-on-month, while the corresponding rural index increased by 2.1 percent when compared with their preceding month.

The percentage change in the average composite CPI for the twelve-month period ending March 2012 over the average of the CPI for the previous twelve-month period was 10.9, down slightly from the 11.0 preceding month. The corresponding 12-month year-on-year average percentage change for urban and rural indices were 9.9 and 11.8 respectively.

## **FOOD INDEX**

In March, the level of the Composite Food Index was higher than the corresponding level a year ago by 11.8 percent. This was higher than 9.7 percent recorded in the previous month. Compared with February 2012 figure, average monthly food prices rose in March 2012 by 2.3 percent. The rise in the food inflation was mainly due to the increasing cost of food products especially yams and other tubers as food products have become relatively scarce due to the drawdown from the end of year harvest. The average annual rate of rise of the index was 10.3 percent (year-on-year) for the twelve-month period ending March 2012.

### **ALL ITEMS LESS FARM PRODUCE**

The “All items less Farm Produce” index which excludes the prices of volatile agricultural products rose by 15.0 percent year-on-year, while the average 12 month annual rate of rise of the index was 12.1 percent for the twelve-month period ending February 2012. On a month-on-month basis, the core index increased by 4.5 percent in March 2012.

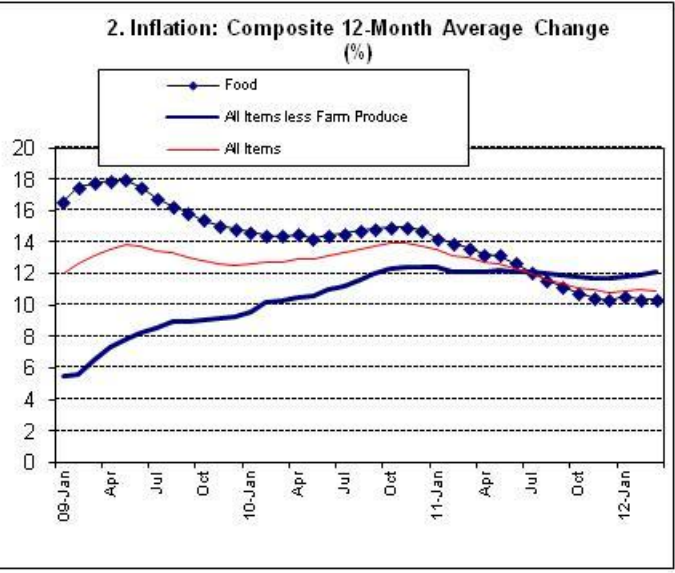
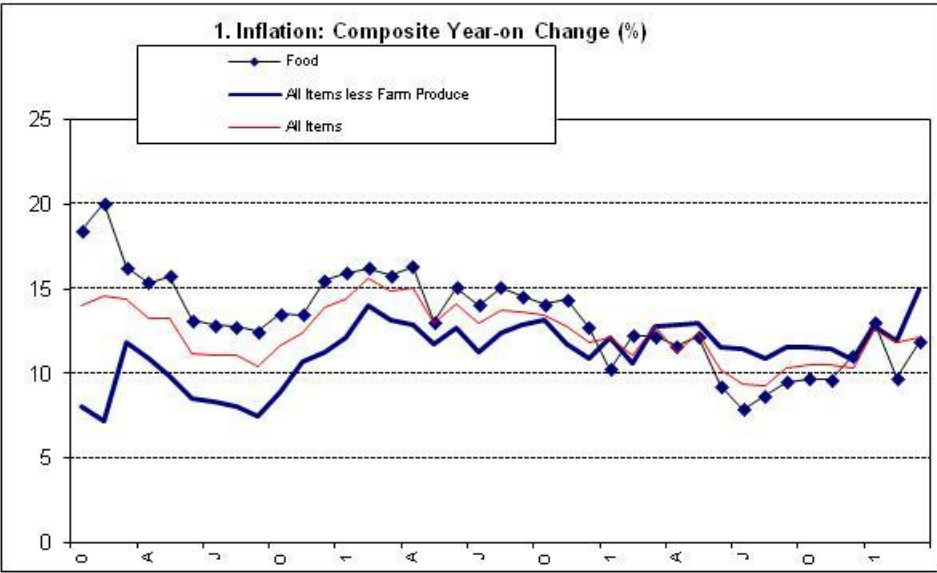
*For more enquiries relating to the CPI revision, please contact [kocimo@nigerianstat.gov.ng](mailto:kocimo@nigerianstat.gov.ng)*

**Table 1 Composite Consumer Price Index (Base November 2009 = 100)**

|  |      | All Items Index |                  |                     |                    |                             | All Items less Farm Produce |                     |                    |                             |         | Food                |                    |                             |  |
|--|------|-----------------|------------------|---------------------|--------------------|-----------------------------|-----------------------------|---------------------|--------------------|-----------------------------|---------|---------------------|--------------------|-----------------------------|--|
|  |      | Monthly         | 12-Month Average | Month-on change (%) | Year-on change (%) | 12-Month average change (%) | Monthly                     | Month-on change (%) | Year-on change (%) | 12-Month average change (%) | Monthly | Month-on change (%) | Year-on change (%) | 12-Month average change (%) |  |
| <i>Weights**</i>   |      | <b>1000.0</b>   |                  |                     |                    |                             | 535.94                      |                     |                    |                             | 507.03  |                     |                    |                             |  |
| Please note that the above weights are only expenditure weights which are still adjusted by population across 37 states. They should not be taken as the final weights in the computation of the CPI |      |                 |                  |                     |                    |                             |                             |                     |                    |                             |         |                     |                    |                             |  |
| 2008   | Jan  | 79.1            | 76.8             | 1.4                 | 8.6                | 5.5                         | 84.4                        | 2.1                 | 2.5                | 7.9                         | 75.5    | 0.5                 | 12.6               | 2.9                         |  |
|  | Feb  | 79.3            | 77.3             | 0.3                 | 8.0                | 5.5                         | 85.5                        | 1.4                 | 6.4                | 7.5                         | 75.2    | -0.5                | 8.7                | 3.3                         |  |
|  | Mar  | 79.9            | 77.8             | 0.8                 | 7.8                | 5.8                         | 82.2                        | -3.9                | 0.5                | 6.8                         | 78.2    | 4.1                 | 12.4               | 4.2                         |  |
|  | Apr  | 81.1            | 78.3             | 1.6                 | 8.2                | 6.1                         | 83.5                        | 1.5                 | 1.2                | 6.4                         | 79.4    | 1.5                 | 13.1               | 5.1                         |  |
|  | May  | 82.7            | 78.9             | 1.9                 | 9.7                | 6.5                         | 85.7                        | 2.7                 | 3.3                | 6.3                         | 80.8    | 1.7                 | 14.7               | 6.1                         |  |
|  | Jun  | 85.7            | 79.6             | 3.7                 | 12.0               | 7.0                         | 87.9                        | 2.5                 | 3.6                | 5.8                         | 84.5    | 4.6                 | 18.1               | 7.4                         |  |
|  | Jul  | 87.6            | 80.5             | 2.2                 | 14.0               | 7.8                         | 89.4                        | 1.7                 | 4.8                | 5.4                         | 86.7    | 2.6                 | 20.9               | 9.0                         |  |
|  | Aug  | 88.6            | 81.3             | 1.2                 | 12.4               | 8.5                         | 90.0                        | 0.7                 | 3.9                | 4.8                         | 87.7    | 1.2                 | 18.8               | 10.7                        |  |
|  | Sep  | 89.6            | 82.2             | 1.1                 | 13.0               | 9.2                         | 91.3                        | 1.4                 | 6.9                | 4.5                         | 88.5    | 0.8                 | 17.1               | 12.3                        |  |
|  | Oct  | 89.0            | 83.2             | -0.6                | 14.7               | 10.1                        | 90.8                        | -0.6                | 7.9                | 4.3                         | 88.0    | -0.5                | 19.2               | 14.0                        |  |
|  | Nov  | 89.0            | 84.1             | -0.05               | 14.8               | 10.9                        | 90.3                        | -0.5                | 9.3                | 4.5                         | 88.1    | 0.1                 | 18.1               | 15.3                        |  |
|  | Dec  | 89.7            | 85.1             | 0.8                 | 15.1               | 11.6                        | 91.2                        | 1.0                 | 10.4               | 5.1                         | 88.6    | 0.6                 | 18.0               | 16.1                        |  |
| 2009   | Jan  | 90.2            | 86.0             | 0.5                 | 14.0               | 12.0                        | 91.1                        | -0.1                | 8.0                | 5.5                         | 89.5    | 0.9                 | 18.4               | 16.5                        |  |
|  | Feb  | 90.8            | 87.0             | 0.7                 | 14.6               | 12.6                        | 91.7                        | 0.6                 | 7.2                | 5.6                         | 90.2    | 0.8                 | 20.0               | 17.5                        |  |
|  | Mar  | 91.4            | 87.9             | 0.6                 | 14.4               | 13.1                        | 92.0                        | 0.3                 | 11.8               | 6.5                         | 90.9    | 0.8                 | 16.2               | 17.7                        |  |
|  | Apr  | 91.9            | 88.8             | 0.6                 | 13.3               | 13.5                        | 92.5                        | 0.6                 | 10.9               | 7.3                         | 91.6    | 0.7                 | 15.3               | 17.9                        |  |
|  | May  | 93.6            | 89.8             | 1.8                 | 13.2               | 13.8                        | 94.2                        | 1.8                 | 9.9                | 7.8                         | 93.5    | 2.0                 | 15.7               | 17.9                        |  |
|  | June | 95.3            | 90.6             | 1.8                 | 11.2               | 13.7                        | 95.3                        | 1.2                 | 8.5                | 8.3                         | 95.6    | 2.2                 | 13.1               | 17.5                        |  |
|  | July | 97.3            | 91.4             | 2.1                 | 11.1               | 13.4                        | 96.8                        | 1.5                 | 8.3                | 8.6                         | 97.9    | 2.4                 | 12.9               | 16.8                        |  |
|  | Aug  | 98.4            | 92.2             | 1.1                 | 11.0               | 13.3                        | 97.3                        | 0.5                 | 8.0                | 8.9                         | 98.9    | 1.1                 | 12.7               | 16.3                        |  |
|  | Sep  | 98.9            | 93.0             | 0.5                 | 10.4               | 13.1                        | 98.1                        | 0.8                 | 7.4                | 8.9                         | 99.5    | 0.6                 | 12.5               | 15.9                        |  |
|  | Oct  | 99.4            | 93.8             | 0.5                 | 11.6               | 12.8                        | 98.9                        | 0.8                 | 8.9                | 9.0                         | 99.9    | 0.4                 | 13.5               | 15.4                        |  |
|  | Nov  | 100.0           | 94.7             | 0.7                 | 12.4               | 12.6                        | 100.0                       | 1.1                 | 10.7               | 9.1                         | 100.0   | 0.1                 | 13.5               | 15.0                        |  |
|  | Dec  | 102.2           | 95.8             | 2.2                 | 13.9               | 12.5                        | 101.5                       | 1.5                 | 11.2               | 9.2                         | 102.4   | 2.4                 | 15.5               | 14.8                        |  |
| 2010   | Jan  | 103.1           | 96.9             | 1.0                 | 14.4               | 12.6                        | 102.1                       | 0.6                 | 12.1               | 9.6                         | 103.7   | 1.3                 | 15.9               | 14.7                        |  |
|  | Feb  | 105.0           | 98.0             | 1.9                 | 15.6               | 12.7                        | 104.5                       | 2.3                 | 14.0               | 10.1                        | 104.8   | 1.1                 | 16.2               | 14.4                        |  |

|      |     |       |       |       |      |      |       |      |      |      |       |      |      |      |
|------|-----|-------|-------|-------|------|------|-------|------|------|------|-------|------|------|------|
|      | Mar | 104.9 | 99.2  | -0.1  | 14.8 | 12.8 | 104.1 | -0.4 | 13.2 | 10.3 | 105.3 | 0.4  | 15.8 | 14.4 |
|      | Apr | 105.7 | 100.3 | 0.8   | 15.0 | 12.9 | 104.4 | 0.3  | 12.8 | 10.4 | 106.6 | 1.2  | 16.3 | 14.5 |
|      | May | 105.7 | 101.3 | -0.04 | 12.9 | 12.9 | 105.2 | 0.8  | 11.7 | 10.6 | 105.7 | -0.8 | 13.0 | 14.3 |
|      | Jun | 108.8 | 102.4 | 2.91  | 14.1 | 13.1 | 107.4 | 2.1  | 12.7 | 10.9 | 110.0 | 4.1  | 15.1 | 14.4 |
|      | Jul | 109.9 | 103.5 | 1.08  | 13.0 | 13.3 | 107.7 | 0.3  | 11.3 | 11.2 | 111.6 | 1.5  | 14.0 | 14.5 |
|      | Aug | 111.9 | 104.6 | 1.76  | 13.7 | 13.5 | 109.3 | 1.5  | 12.4 | 11.5 | 113.8 | 2.0  | 15.1 | 14.7 |
|      | Sep | 112.4 | 105.7 | 0.46  | 13.6 | 13.8 | 110.7 | 1.3  | 12.8 | 12.0 | 114.0 | 0.1  | 14.6 | 14.9 |
|      | Oct | 112.7 | 106.9 | 0.30  | 13.4 | 13.9 | 111.9 | 1.1  | 13.2 | 12.3 | 114.0 | -0.0 | 14.1 | 14.9 |
|      | Nov | 112.8 | 107.9 | 0.04  | 12.8 | 13.9 | 111.7 | -0.1 | 11.7 | 12.4 | 114.4 | 0.3  | 14.4 | 15.0 |
|      | Dec | 114.2 | 108.9 | 1.29  | 11.8 | 13.7 | 112.6 | 0.7  | 10.9 | 12.4 | 115.4 | 0.9  | 12.7 | 14.7 |
| 2011 | Jan | 115.6 | 110.0 | 1.20  | 12.1 | 13.5 | 114.5 | 1.7  | 12.1 | 12.4 | 114.3 | -0.9 | 10.3 | 14.2 |
|      | Feb | 116.7 | 110.9 | 0.96  | 11.1 | 13.2 | 115.5 | 0.9  | 10.6 | 12.1 | 117.7 | 2.9  | 12.2 | 13.9 |
|      | Mar | 118.3 | 112.1 | 1.37  | 12.8 | 13.0 | 117.5 | 1.7  | 12.8 | 12.1 | 118.1 | 0.4  | 12.2 | 13.6 |
|      | Apr | 117.7 | 113.0 | -0.54 | 11.3 | 12.7 | 117.9 | 0.3  | 12.9 | 12.1 | 119.0 | 0.7  | 11.6 | 13.2 |
|      | May | 118.7 | 114.1 | 0.91  | 12.4 | 12.6 | 118.9 | 0.9  | 13.0 | 12.2 | 118.5 | -0.3 | 12.2 | 13.2 |
|      | Jun | 119.9 | 115.1 | 0.97  | 10.2 | 12.3 | 119.8 | 0.7  | 11.5 | 12.1 | 120.1 | 1.3  | 9.2  | 12.7 |
|      | Jul | 120.3 | 115.9 | 0.32  | 9.4  | 12.0 | 120.1 | 0.2  | 11.5 | 12.1 | 120.4 | 0.2  | 7.9  | 12.1 |
|      | Aug | 122.3 | 116.8 | 1.67  | 9.3  | 11.6 | 121.2 | 0.9  | 10.9 | 12.0 | 123.7 | 2.7  | 8.7  | 11.6 |
|      | Sep | 124.0 | 117.8 | 1.41  | 10.3 | 11.4 | 123.5 | 1.9  | 11.6 | 11.9 | 124.8 | 0.9  | 9.5  | 11.2 |
|      | Oct | 124.6 | 118.8 | 0.49  | 10.5 | 11.1 | 124.8 | 1.1  | 11.5 | 11.7 | 125.0 | 0.2  | 9.7  | 10.8 |
|      | Nov | 124.7 | 119.7 | 0.04  | 10.5 | 11.0 | 124.6 | -0.2 | 11.5 | 11.7 | 125.4 | 0.3  | 9.6  | 10.4 |
|      | Dec | 126.0 | 120.7 | 1.06  | 10.3 | 10.8 | 124.8 | 0.2  | 10.8 | 11.7 | 128.1 | 2.2  | 11.0 | 10.3 |
| 2012 | Jan | 130.2 | 121.9 | 3.35  | 12.6 | 10.9 | 129.1 | 3.5  | 12.7 | 11.8 | 129.3 | 0.9  | 13.1 | 10.5 |
|      | Feb | 130.5 | 123.1 | 0.28  | 11.9 | 11.0 | 129.3 | 0.1  | 11.9 | 11.9 | 129.1 | -0.1 | 9.7  | 10.3 |
|      | Mar | 132.6 | 124.3 | 1.59  | 12.1 | 10.9 | 135.1 | 4.5  | 15.0 | 12.1 | 132.1 | 2.3  | 11.8 | 10.3 |





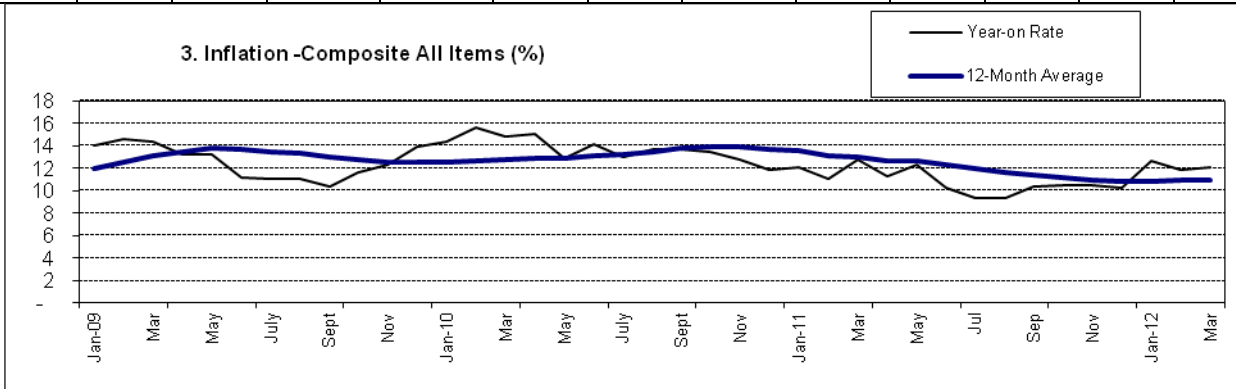
**Table 2 Composite Consumer Price Index (Base November 2009 = 100)**

|                |  | All Items | All Items less Farm Produce. | All Items less Farm Produce. and Energy | Imported Food | Food | Food & Non Alcoholic Bev. | Alcoholic Beverage. Tobacco and Kola | Clothing and Footwear | Housing Water, Electricity. Gas and Other Fuel | Furnishings & Household Equipment Maintenance. | Health. | Transport | Communication | Recreation & Culture. | Education | Restaurant & Hotels | Miscellaneous Goods & Services | Month-on (%) | Year-on (%) | 12-month average (%) |
|----------------|--|-----------|------------------------------|---|---------------|------|---------------------------|--------------------------------------|-----------------------|--|--|---------|-----------|---------------|-----------------------|-----------|---------------------|--------------------------------|--------------|-------------|----------------------|
| <b>Weights</b> |  | 1000      | 535.9                        | 428.1                                   | 132.5         | 507  | 518                       | 10.87                                | 76.5                  | 167.3  | 50.26  | 30      | 65.1      | 6.8           | 6.91                  | 39.44     | 12.1                | 16.6                           |              |             |                      |

Please note that the above weights are only expenditure weights which are still adjusted by population across 37 states. They should not be taken as the final weights in the computation of the CPI

|             |      |       |       |       |       |       |       |       |       |       |       |       |       |       |       |       |       |       |       |      |      |      |
|-------------|------|-------|-------|-------|-------|-------|-------|-------|-------|-------|-------|-------|-------|-------|-------|-------|-------|-------|-------|------|------|------|
| <b>2008</b> | Jan  | 79.1  | 84.4  | 82.2  |       | 75.5  | 75.8  | 96.7  | 86.3  | 84.6  | 78.2  | 83.9  | 86.5  | 83.1  | 88.8  | 75.3  | 76.9  | 82.1  | 1.4   | 8.6  | 5.5  |      |
|             | Feb  | 79.3  | 85.5  | 84.9  |       | 75.2  | 75.4  | 95.7  | 86.6  | 85.2  | 78.5  | 83.4  | 88.4  | 82.9  | 87.1  | 75.5  | 78.4  | 81.8  | 0.3   | 8.0  | 5.5  |      |
|             | Mar  | 79.9  | 82.2  | 80.8  |       | 78.2  | 78.4  | 98.1  | 85.1  | 83.3  | 80.5  | 86.1  | 84.4  | 81.9  | 88.2  | 74.8  | 79.6  | 79.4  | 0.8   | 7.8  | 5.8  |      |
|             | Apr  | 81.1  | 83.5  | 83.0  |       | 79.4  | 79.7  | 97.7  | 89.4  | 84.3  | 81.6  | 89.4  | 88.6  | 93.9  | 87.9  | 73.7  | 82.8  | 80.5  | 1.6   | 8.2  | 6.1  |      |
|             | May  | 82.7  | 85.7  | 84.8  |       | 80.8  | 81.0  | 99.7  | 90.7  | 85.6  | 83.7  | 90.5  | 87.9  | 97.6  | 89.0  | 74.9  | 91.9  | 86.4  | 1.9   | 9.7  | 6.5  |      |
|             | Jun  | 85.7  | 87.9  | 88.4  |       | 84.5  | 84.6  | 99.4  | 92.8  | 88.4  | 86.3  | 91.6  | 88.3  | 96.5  | 88.7  | 78.4  | 94.3  | 86.4  | 3.7   | 12.0 | 7.0  |      |
|             | Jul  | 87.6  | 89.4  | 87.6  |       | 86.7  | 86.8  | 100.2 | 94.2  | 90.8  | 87.8  | 93.5  | 89.7  | 97.3  | 90.9  | 80.9  | 94.3  | 90.8  | 2.2   | 14.0 | 7.8  |      |
|             | Aug  | 88.6  | 90.0  | 89.4  |       | 87.7  | 87.8  | 100.3 | 95.7  | 92.5  | 87.4  | 92.4  | 88.6  | 97.3  | 92.4  | 83.7  | 97.8  | 88.0  | 1.2   | 12.4 | 8.5  |      |
|             | Sep  | 89.6  | 91.3  | 90.2  |       | 88.5  | 88.5  | 99.2  | 95.5  | 94.1  | 87.4  | 92.3  | 88.3  | 97.7  | 92.5  | 83.1  | 97.1  | 88.9  | 1.1   | 13.0 | 9.2  |      |
|             | Oct  | 89.0  | 90.8  | 90.5  |       | 88.0  | 88.1  | 97.8  | 96.0  | 93.3  | 88.0  | 93.3  | 88.8  | 97.3  | 92.9  | 84.7  | 97.6  | 90.5  | -0.6  | 14.7 | 10.1 |      |
|             | Nov  | 89.0  | 90.3  | 90.1  |       | 88.1  | 88.2  | 97.6  | 95.9  | 92.0  | 87.1  | 94.2  | 89.2  | 97.1  | 93.9  | 84.9  | 98.0  | 91.1  | 0.05  | 14.8 | 10.9 |      |
|             | Dec  | 89.7  | 91.2  | 91.7  |       | 88.6  | 88.7  | 97.5  | 96.9  | 93.5  | 87.1  | 96.1  | 90.9  | 97.1  | 93.5  | 87.6  | 99.5  | 92.9  | 0.8   | 15.1 | 11.6 |      |
| <b>2009</b> | Jan  | 90.2  | 91.1  | 92.6  |       | 89.5  | 89.5  | 97.6  | 97.0  | 92.3  | 87.3  | 97.1  | 91.2  | 97.1  | 93.7  | 88.3  | 99.4  | 93.9  | 0.5   | 14.0 | 12.0 |      |
|             | Feb  | 90.8  | 91.7  | 92.6  |       | 90.2  | 90.2  | 98.5  | 97.0  | 92.6  | 87.4  | 98.6  | 90.2  | 97.1  | 92.8  | 88.1  | 100.4 | 94.1  | 0.7   | 14.6 | 12.6 |      |
|             | Mar  | 91.4  | 92.0  | 93.1  |       | 90.9  | 91.0  | 98.5  | 97.1  | 92.6  | 87.9  | 99.0  | 91.0  | 97.1  | 92.7  | 89.9  | 100.2 | 94.9  | 0.6   | 14.4 | 13.1 |      |
|             | Apr  | 91.9  | 92.5  | 94.1  |       | 91.6  | 91.7  | 99.1  | 97.5  | 92.9  | 89.6  | 101.1 | 94.4  | 97.1  | 93.4  | 89.3  | 101.3 | 95.4  | 0.6   | 13.3 | 13.5 |      |
|             | May  | 93.6  | 94.2  | 95.4  |       | 93.5  | 93.5  | 99.5  | 96.7  | 94.3  | 88.8  | 99.2  | 96.0  | 97.1  | 94.6  | 92.3  | 100.2 | 94.5  | 1.8   | 13.2 | 13.8 |      |
|             | June | 95.3  | 95.3  | 96.6  |       | 95.6  | 95.6  | 99.7  | 97.1  | 96.3  | 89.6  | 100.1 | 94.0  | 97.1  | 95.0  | 92.6  | 101.1 | 97.8  | 1.8   | 11.2 | 13.7 |      |
|             | July | 97.3  | 96.8  | 98.4  |       | 97.9  | 97.8  | 101.4 | 97.9  | 98.3  | 99.3  | 101.7 | 92.5  | 99.4  | 96.8  | 93.9  | 98.9  | 98.8  | 2.1   | 11.1 | 13.4 |      |
|             | Aug  | 98.4  | 97.3  | 97.7  |       | 98.9  | 98.9  | 100.2 | 99.1  | 98.4  | 100.2 | 101.8 | 93.1  | 101.5 | 98.1  | 99.4  | 101.2 | 100.0 | 1.1   | 11.0 | 13.3 |      |
|             | Sep  | 98.9  | 98.1  | 98.5  |       | 99.5  | 99.5  | 99.3  | 99.1  | 98.7  | 98.7  | 101.6 | 94.9  | 101.2 | 97.6  | 99.6  | 99.9  | 100.1 | 0.5   | 10.4 | 13.1 |      |
|             | Oct  | 99.4  | 98.9  | 99.1  |       | 99.9  | 99.9  | 99.7  | 99.6  | 99.5  | 99.1  | 102.3 | 96.0  | 100.4 | 97.5  | 97.7  | 99.0  | 99.7  | 0.5   | 11.6 | 12.8 |      |
|             | Nov  | 100.0 | 100.0 | 100.0 | 100.0 | 100.0 | 100.0 | 100.0 | 100.0 | 100.0 | 100.0 | 100.0 | 100.0 | 100.0 | 100.0 | 100.0 | 100.0 | 100.0 | 100.0 | 0.7  | 12.4 | 12.6 |
|             | Dec  | 102.2 | 101.5 | 101.9 | 101.5 | 102.4 | 102.7 | 101.9 | 101.5 | 100.2 | 101.7 | 101.8 | 101.8 | 100.0 | 101.9 | 101.5 | 102.6 | 101.7 | 2.2   | 13.9 | 12.5 |      |

|             |     |       |       |       |       |       |       |       |       |       |       |       |       |       |       |       |       |       |      |      |      |
|-------------|-----|-------|-------|-------|-------|-------|-------|-------|-------|-------|-------|-------|-------|-------|-------|-------|-------|-------|------|------|------|
| <b>2010</b> | Jan | 103.1 | 102.1 | 102.6 | 101.7 | 103.7 | 103.9 | 102.3 | 102.4 | 100.6 | 103.0 | 103.0 | 103.0 | 99.6  | 103.0 | 103.1 | 106.7 | 103.3 | 1.0  | 14.4 | 12.6 |
|             | Feb | 105.0 | 104.5 | 105.0 | 103.2 | 104.8 | 105.4 | 102.6 | 103.4 | 102.3 | 104.7 | 104.9 | 104.7 | 100.3 | 99.4  | 106.0 | 106.3 | 105.9 | 1.9  | 15.6 | 12.7 |
|             | Mar | 104.9 | 104.1 | 104.6 | 103.0 | 105.3 | 105.3 | 104.3 | 104.5 | 102.2 | 105.7 | 105.3 | 104.8 | 100.6 | 103.3 | 105.5 | 105.6 | 104.4 | -0.1 | 14.8 | 12.8 |
|             | Apr | 105.7 | 104.4 | 105.1 | 103.9 | 106.6 | 106.7 | 104.8 | 105.1 | 102.2 | 103.8 | 104.9 | 106.8 | 100.4 | 103.1 | 105.6 | 109.7 | 106.2 | 0.8  | 15.0 | 12.9 |
|             | May | 105.7 | 105.2 | 106.5 | 104.9 | 105.7 | 106.2 | 103.8 | 105.9 | 102.1 | 102.6 | 104.8 | 106.3 | 100.2 | 103.3 | 108.6 | 110.1 | 107.2 | 0.04 | 12.9 | 12.9 |
|             | Jun | 108.8 | 107.4 | 108.6 | 109.6 | 110.0 | 110.2 | 108.5 | 109.1 | 104.8 | 110.7 | 108.5 | 107.4 | 102.1 | 102.6 | 106.6 | 106.9 | 109.6 | 2.91 | 14.1 | 13.1 |
|             | Jul | 109.9 | 107.7 | 108.8 | 109.3 | 111.6 | 112.0 | 109.6 | 110.3 | 105.1 | 109.0 | 110.3 | 107.5 | 102.6 | 103.0 | 105.7 | 105.0 | 110.7 | 1.08 | 13.0 | 13.3 |
|             | Aug | 111.9 | 109.3 | 110.4 | 109.3 | 113.8 | 114.1 | 112.3 | 112.8 | 106.2 | 110.3 | 112.3 | 108.6 | 100.6 | 105.0 | 106.0 | 107.3 | 111.2 | 1.76 | 13.7 | 13.5 |
|             | Sep | 112.4 | 110.7 | 111.7 | 113.6 | 114.0 | 113.5 | 109.0 | 112.4 | 109.9 | 112.1 | 112.0 | 112.2 | 101.8 | 108.4 | 108.4 | 107.1 | 111.7 | 0.46 | 13.6 | 13.8 |
|             | Oct | 112.7 | 111.9 | 112.0 | 114.1 | 114.0 | 114.1 | 111.7 | 112.8 | 111.0 | 113.2 | 114.8 | 107.1 | 102.9 | 109.6 | 110.1 | 108.5 | 110.6 | 0.30 | 13.4 | 13.9 |
|             | Nov | 112.8 | 111.7 | 111.3 | 115.1 | 114.4 | 114.3 | 112.2 | 112.0 | 112.6 | 113.1 | 111.1 | 111.7 | 102.0 | 107.8 | 107.7 | 108.2 | 112.8 | 0.04 | 12.8 | 13.9 |
|             | Dec | 114.2 | 112.6 | 112.5 | 115.4 | 115.4 | 115.5 | 111.9 | 113.7 | 113.2 | 113.2 | 112.7 | 112.9 | 102.4 | 107.8 | 109.1 | 109.6 | 112.1 | 1.29 | 11.8 | 13.7 |
| <b>2011</b> | Jan | 115.6 | 114.5 | 113.0 | 96.0  | 114.3 | 118.7 | 110.6 | 114.4 | 113.9 | 113.5 | 111.3 | 109.2 | 103.6 | 108.3 | 110.2 | 110.5 | 113.2 | 1.2  | 12.1 | 13.5 |
|             | Feb | 116.7 | 115.5 | 115.5 | 124.0 | 117.7 | 117.9 | 113.4 | 116.0 | 114.7 | 115.6 | 114.7 | 117.2 | 104.9 | 106.3 | 110.6 | 112.3 | 114.2 | 0.96 | 11.1 | 13.2 |
|             | Mar | 118.3 | 117.5 | 117.5 | 119.4 | 118.1 | 118.2 | 112.7 | 116.5 | 116.0 | 115.9 | 117.5 | 115.5 | 105.1 | 107.4 | 111.0 | 112.2 | 112.8 | 1.37 | 12.8 | 13.0 |
|             | Apr | 117.7 | 117.9 | 117.9 | 119.1 | 119.0 | 118.0 | 114.5 | 116.2 | 121.0 | 115.4 | 117.2 | 114.8 | 105.1 | 107.1 | 111.4 | 113.3 | 114.7 | 0.54 | 11.3 | 12.7 |
|             | May | 118.7 | 118.9 | 119.0 | 120.6 | 118.5 | 118.5 | 115.1 | 118.2 | 121.2 | 116.6 | 116.6 | 115.7 | 105.7 | 107.4 | 111.9 | 113.8 | 115.6 | 0.91 | 12.4 | 12.6 |
|             | Jun | 119.9 | 119.8 | 119.8 | 111.9 | 120.1 | 119.5 | 114.2 | 118.0 | 121.6 | 116.3 | 119.9 | 118.5 | 105.6 | 107.9 | 112.2 | 114.3 | 117.9 | 0.97 | 10.2 | 12.3 |
|             | Jul | 120.3 | 120.1 | 119.9 | 112.6 | 120.4 | 120.2 | 112.4 | 117.7 | 122.5 | 117.6 | 118.3 | 120.7 | 106.2 | 111.1 | 112.6 | 115.0 | 119.8 | 0.32 | 9.4  | 12.0 |
|             | Aug | 122.3 | 121.2 | 121.1 | 116.0 | 123.7 | 123.4 | 116.4 | 118.7 | 124.5 | 120.0 | 120.4 | 121.9 | 106.4 | 109.5 | 112.9 | 115.1 | 121.5 | 1.67 | 9.3  | 11.6 |
|             | Sep | 124.0 | 123.5 | 122.7 | 117.6 | 124.8 | 124.2 | 116.2 | 119.9 | 126.1 | 119.2 | 122.3 | 122.3 | 106.2 | 109.8 | 113.8 | 115.7 | 121.6 | 1.41 | 10.3 | 11.4 |
|             | Oct | 124.6 | 124.8 | 124.0 | 117.0 | 125.0 | 124.3 | 117.6 | 120.6 | 128.5 | 119.5 | 121.8 | 122.2 | 106.6 | 117.0 | 114.0 | 116.6 | 122.0 | 0.49 | 10.5 | 11.1 |
|             | Nov | 124.7 | 124.6 | 123.5 | 124.2 | 125.4 | 125.1 | 118.9 | 121.9 | 128.1 | 120.2 | 122.7 | 123.3 | 107.1 | 115.7 | 114.2 | 116.9 | 125.5 | 0.04 | 10.5 | 11.0 |
|             | Dec | 126.0 | 124.8 | 123.6 | 125.3 | 128.1 | 127.8 | 119.0 | 122.3 | 131.9 | 119.9 | 122.8 | 128.7 | 106.5 | 113.3 | 114.6 | 118.9 | 122.7 | 1.06 | 10.3 | 10.8 |
| <b>2012</b> | Jan | 130.2 | 129.1 | 129.2 | 121.6 | 129.3 | 130.8 | 123.2 | 121.1 | 131.8 | 120.6 | 122.7 | 127.8 | 108.7 | 114.5 | 115.0 | 120.0 | 125.9 | 3.35 | 12.6 | 10.9 |
|             | Feb | 130.5 | 129.3 | 129.4 | 121.6 | 129.1 | 129.1 | 123.2 | 121.1 | 131.8 | 120.6 | 122.7 | 127.9 | 108.7 | 114.5 | 115.1 | 120.0 | 125.9 | 0.28 | 11.9 | 11.0 |
|             | Mar | 132.6 | 135.1 | 134.5 | 129.9 | 132.1 | 131.9 | 120.6 | 133.7 | 139.7 | 130.2 | 129.7 | 134.4 | 113.4 | 116.7 | 125.6 | 121.4 | 131.6 | 1.59 | 12.1 | 10.9 |



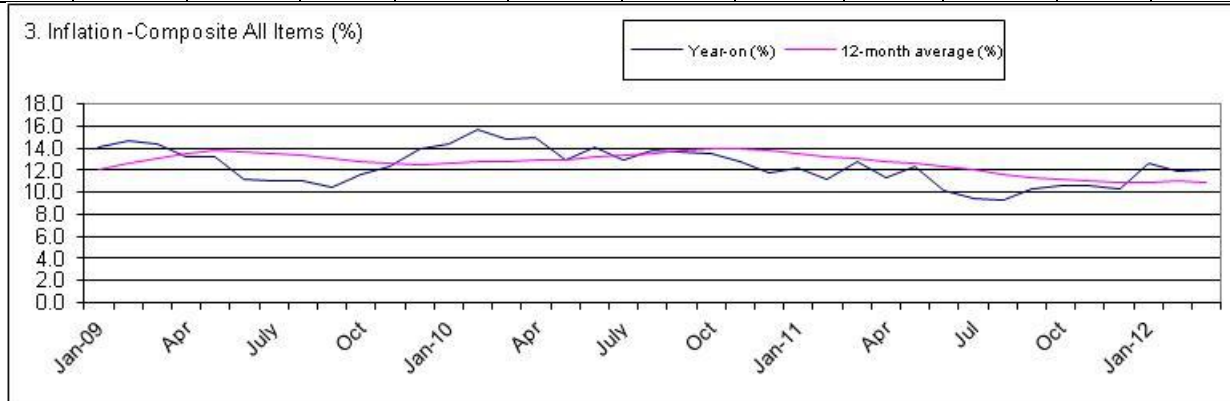
**Table 2 Composite Consumer Price Index (Base May 2003 = 100)**

|  |  | All Items | All Items less Farm Produce. | All Items less Farm Produce and Energy | Food | Food & Non Alcoholic Bev. | Alcoholic Beverage. Tobacco and Kola | Clothing and Footwear | Housing Water, Electricity, Gas and Other Fuel | Furnishings & Household Equipment Maintenance. | Health. | Transport | Communication | Recreation & Culture. | Education | Restaurant & Hotels | Miscellaneous Goods & Services | Month-on (%) | Year-on (%) | 12-month average (%) |
|--|--|-----------|------------------------------|--|------|---------------------------|--------------------------------------|-----------------------|--|--|---------|-----------|---------------|-----------------------|-----------|---------------------|--------------------------------|--------------|-------------|----------------------|
|--|--|-----------|------------------------------|--|------|---------------------------|--------------------------------------|-----------------------|--|--|---------|-----------|---------------|-----------------------|-----------|---------------------|--------------------------------|--------------|-------------|----------------------|

Please note that the weights below are only expenditure weights which are still adjusted by population across 37 states. They should not be taken as the final weights in the computation of the CPI

| <i>Weights</i> |      | 1000  | 409.5<br>3 | 335.89 | 637.6 | 644.1 | 20.6  | 32.1  | 181.0 | 38.2  | 13.6  | 42.4  | 1.1   | 8.9   | 2.1   | 12.9  | 3.0   |       |      |      |
|----------------|------|-------|------------|--------|-------|-------|-------|-------|-------|-------|-------|-------|-------|-------|-------|-------|-------|-------|------|------|
| <b>2008</b>    | Jan  | 169.8 | 175.4      | 158.8  | 162.9 | 163.2 | 161.0 | 142.5 | 205.1 | 147.7 | 141.7 | 165.9 | 197.7 | 145.3 | 182.6 | 213.3 | 156.2 | 1.4   | 8.6  | 5.5  |
|                | Feb  | 170.3 | 177.8      | 164.1  | 162.1 | 162.4 | 159.4 | 142.9 | 206.6 | 148.2 | 140.8 | 169.4 | 197.2 | 142.4 | 183.0 | 217.5 | 155.7 | 0.3   | 8.0  | 5.5  |
|                | Mar  | 171.6 | 170.9      | 156.1  | 168.7 | 168.9 | 163.4 | 140.5 | 201.8 | 152.0 | 145.4 | 161.8 | 194.8 | 144.4 | 181.5 | 220.9 | 151.0 | 0.8   | 7.8  | 5.8  |
|                | Apr  | 174.3 | 173.5      | 160.4  | 171.3 | 171.5 | 162.7 | 147.6 | 204.5 | 154.1 | 151.1 | 169.9 | 223.5 | 143.8 | 178.7 | 229.6 | 153.2 | 1.6   | 8.2  | 6.1  |
|                | May  | 177.6 | 178.1      | 163.8  | 174.2 | 174.4 | 166.1 | 149.8 | 207.4 | 158.1 | 153.0 | 168.6 | 232.1 | 145.7 | 181.6 | 255.0 | 164.3 | 1.9   | 9.7  | 6.5  |
|                | Jun  | 184.1 | 182.6      | 170.8  | 182.2 | 182.2 | 165.5 | 153.2 | 214.3 | 163.1 | 154.8 | 169.3 | 229.5 | 145.2 | 190.2 | 261.7 | 164.4 | 3.7   | 12.0 | 7.0  |
|                | Jul  | 188.1 | 185.8      | 169.3  | 187.0 | 186.9 | 166.9 | 155.5 | 220.1 | 165.8 | 157.9 | 171.9 | 231.4 | 148.7 | 196.2 | 261.6 | 172.7 | 2.2   | 14.0 | 7.8  |
|                | Aug  | 190.3 | 187.1      | 172.8  | 189.2 | 189.0 | 167.0 | 157.9 | 224.3 | 165.1 | 156.1 | 169.9 | 231.4 | 151.2 | 203.0 | 271.2 | 167.5 | 1.2   | 12.4 | 8.5  |
|                | Sep  | 192.4 | 189.8      | 174.2  | 190.8 | 190.6 | 165.2 | 157.7 | 228.1 | 165.0 | 156.0 | 169.3 | 232.5 | 151.4 | 201.5 | 269.2 | 169.2 | 1.1   | 13.0 | 9.2  |
|                | Oct  | 191.2 | 188.6      | 174.9  | 189.8 | 189.6 | 162.9 | 158.4 | 226.2 | 166.2 | 157.5 | 170.2 | 231.4 | 152.1 | 205.3 | 270.8 | 172.1 | -0.6  | 14.7 | 10.1 |
|                | Nov  | 191.1 | 187.7      | 174.1  | 190.0 | 189.8 | 162.6 | 158.3 | 223.0 | 164.6 | 159.1 | 171.0 | 231.0 | 153.6 | 206.0 | 271.7 | 173.3 | -0.05 | 14.8 | 10.9 |
|                | Dec  | 192.6 | 189.6      | 177.2  | 191.2 | 191.0 | 162.4 | 160.0 | 226.6 | 164.4 | 162.3 | 174.2 | 231.0 | 153.0 | 212.5 | 276.1 | 176.8 | 0.8   | 15.1 | 11.6 |
| <b>2009</b>    | Jan  | 193.6 | 189.4      | 178.8  | 192.9 | 192.7 | 162.5 | 160.2 | 223.7 | 164.8 | 164.1 | 174.9 | 230.9 | 153.3 | 214.1 | 275.6 | 178.7 | 0.5   | 14.0 | 12.0 |
|                | Feb  | 195.1 | 190.5      | 179.0  | 194.6 | 194.3 | 164.0 | 160.1 | 224.5 | 165.0 | 166.6 | 173.0 | 231.0 | 151.7 | 213.7 | 278.5 | 179.0 | 0.7   | 14.6 | 12.6 |
|                | Mar  | 196.2 | 191.2      | 180.0  | 196.1 | 195.9 | 164.0 | 160.2 | 224.4 | 165.9 | 167.3 | 174.4 | 230.9 | 151.6 | 218.1 | 277.9 | 180.6 | 0.6   | 14.4 | 13.1 |
|                | Apr  | 197.4 | 192.3      | 181.7  | 197.6 | 197.4 | 165.0 | 160.9 | 225.2 | 169.2 | 170.8 | 180.9 | 231.0 | 152.8 | 216.7 | 281.0 | 181.6 | 0.6   | 13.3 | 13.5 |
|                | May  | 201.0 | 195.7      | 184.4  | 201.6 | 201.4 | 165.7 | 159.6 | 228.7 | 167.6 | 167.5 | 184.0 | 231.0 | 154.7 | 223.8 | 278.0 | 179.8 | 1.8   | 13.2 | 13.8 |
|                | June | 204.7 | 198.1      | 186.7  | 206.2 | 205.9 | 166.1 | 160.3 | 233.4 | 169.2 | 169.1 | 180.3 | 231.0 | 155.5 | 224.5 | 280.4 | 186.0 | 1.8   | 11.2 | 13.7 |
|                | July | 209.0 | 201.2      | 190.2  | 211.1 | 210.7 | 168.8 | 161.6 | 238.3 | 187.5 | 171.8 | 177.4 | 236.5 | 158.3 | 227.8 | 274.4 | 188.0 | 2.1   | 11.1 | 13.4 |
|                | Aug  | 211.3 | 202.1      | 188.8  | 213.3 | 212.9 | 166.9 | 163.7 | 238.5 | 189.3 | 171.9 | 178.6 | 241.4 | 160.5 | 241.2 | 280.8 | 190.2 | 1.1   | 11.0 | 13.3 |
|                | Sep  | 212.4 | 203.9      | 190.4  | 214.5 | 214.2 | 165.3 | 163.5 | 239.3 | 186.4 | 171.6 | 182.0 | 240.7 | 159.6 | 241.7 | 277.2 | 190.5 | 0.5   | 10.4 | 13.1 |
|                | Oct  | 213.4 | 205.5      | 191.4  | 215.5 | 215.2 | 166.0 | 164.5 | 241.2 | 187.1 | 172.9 | 184.1 | 238.9 | 159.6 | 237.0 | 274.6 | 189.7 | 0.5   | 11.6 | 12.8 |
|                | Nov  | 214.8 | 207.8      | 193.2  | 215.7 | 215.3 | 166.5 | 165.1 | 242.4 | 188.8 | 168.9 | 191.8 | 237.9 | 163.6 | 242.6 | 277.4 | 190.3 | 0.7   | 12.4 | 12.6 |
|                | Dec  | 219.5 | 210.9      | 196.9  | 220.8 | 221.2 | 169.7 | 167.6 | 242.9 | 192.1 | 172.0 | 195.2 | 237.9 | 166.7 | 246.2 | 284.6 | 193.5 | 2.2   | 14.0 | 12.5 |
| <b>2010</b>    | Jan  | 221.4 | 212.2      | 198.2  | 223.6 | 223.7 | 170.3 | 169.1 | 243.9 | 194.5 | 174.0 | 197.5 | 236.9 | 168.5 | 250.1 | 296.0 | 196.5 | 0.9   | 14.4 | 12.6 |
|                | Feb  | 225.5 | 217.2      | 202.9  | 226.0 | 227.0 | 170.8 | 170.7 | 248.0 | 197.7 | 177.2 | 200.8 | 238.6 | 162.6 | 257.1 | 294.9 | 201.5 | 1.8   | 15.6 | 12.7 |
|                | Mar  | 225.3 | 216.3      | 202.1  | 227.1 | 226.8 | 173.7 | 172.5 | 247.7 | 199.6 | 177.9 | 201.0 | 239.3 | 169.0 | 255.9 | 292.9 | 198.6 | -0.1  | 14.8 | 12.8 |
|                | Apr  | 227.0 | 217.0      | 203.1  | 229.9 | 229.8 | 174.5 | 173.5 | 247.7 | 196.0 | 177.2 | 204.8 | 238.8 | 168.7 | 256.1 | 304.3 | 202.1 | 0.8   | 15.0 | 12.9 |
|                | May  | 227.0 | 218.6      | 205.8  | 227.9 | 228.7 | 172.8 | 174.8 | 247.5 | 193.7 | 177.0 | 203.8 | 238.3 | 169.0 | 263.4 | 305.4 | 204.0 | 0.0   | 12.9 | 12.9 |

|             |     |       |       |       |       |       |       |       |       |       |       |       |       |       |       |       |       |      |      |      |
|-------------|-----|-------|-------|-------|-------|-------|-------|-------|-------|-------|-------|-------|-------|-------|-------|-------|-------|------|------|------|
|             | Jun | 233.7 | 223.2 | 209.8 | 237.2 | 237.3 | 180.7 | 180.1 | 254.0 | 209.0 | 183.3 | 206.0 | 242.9 | 167.9 | 258.6 | 296.5 | 208.5 | 2.9  | 14.1 | 13.1 |
|             | Jul | 236.0 | 223.8 | 210.2 | 240.7 | 241.2 | 182.5 | 182.1 | 254.8 | 205.8 | 186.3 | 206.1 | 244.1 | 168.5 | 256.4 | 291.2 | 210.6 | 1.0  | 13.0 | 13.3 |
|             | Aug | 240.3 | 227.1 | 213.3 | 245.4 | 245.7 | 187.0 | 186.2 | 257.4 | 208.3 | 189.7 | 208.3 | 239.3 | 171.8 | 257.1 | 297.6 | 211.6 | 1.8  | 13.7 | 13.5 |
|             | Sep | 241.4 | 230.0 | 215.8 | 245.8 | 244.4 | 181.5 | 185.6 | 266.4 | 211.7 | 189.2 | 215.2 | 242.2 | 177.3 | 262.9 | 297.1 | 212.5 | 0.4  | 13.7 | 13.8 |
|             | Oct | 242.1 | 232.5 | 216.4 | 245.8 | 245.7 | 186.0 | 186.2 | 269.1 | 213.8 | 193.9 | 205.4 | 244.8 | 179.3 | 267.1 | 301.0 | 210.4 | 0.3  | 13.4 | 13.9 |
|             | Nov | 242.3 | 232.1 | 215.0 | 246.7 | 246.1 | 186.8 | 184.9 | 273.0 | 213.6 | 187.7 | 214.2 | 242.6 | 176.4 | 261.2 | 300.1 | 214.6 | 0.1  | 12.8 | 13.9 |
|             | Dec | 245.3 | 234.0 | 217.4 | 248.9 | 248.7 | 186.3 | 187.7 | 274.4 | 213.8 | 190.4 | 216.5 | 243.6 | 176.4 | 264.6 | 304.0 | 213.3 | 1.3  | 11.8 | 13.7 |
| <b>2011</b> | Jan | 248.3 | 237.9 | 218.3 | 246.5 | 255.6 | 184.2 | 188.9 | 276.1 | 214.3 | 188.0 | 209.4 | 246.4 | 177.2 | 267.3 | 306.5 | 215.4 | 1.2  | 12.1 | 13.5 |
|             | Feb | 250.6 | 240.0 | 223.2 | 253.8 | 253.9 | 188.8 | 191.5 | 278.0 | 218.3 | 193.8 | 224.7 | 249.5 | 173.9 | 268.3 | 311.5 | 217.3 | 1.0  | 11.1 | 13.2 |
|             | Mar | 254.1 | 244.2 | 227.0 | 254.7 | 254.5 | 187.7 | 192.3 | 281.2 | 218.9 | 198.5 | 221.5 | 250.0 | 175.7 | 269.2 | 311.2 | 214.6 | 1.4  | 12.8 | 13.0 |
|             | Apr | 252.7 | 245.0 | 227.8 | 254.5 | 248.5 | 190.7 | 191.8 | 293.3 | 217.9 | 198.0 | 220.1 | 250.0 | 192.6 | 270.2 | 314.3 | 218.2 | -0.5 | 11.3 | 12.7 |
|             | May | 254.9 | 247.1 | 229.9 | 255.5 | 255.2 | 191.7 | 195.1 | 293.8 | 220.2 | 197.0 | 221.9 | 251.4 | 175.7 | 271.4 | 315.7 | 220.0 | 0.9  | 12.3 | 12.7 |
|             | Jun | 257.5 | 249.0 | 231.5 | 259.0 | 257.3 | 190.2 | 194.8 | 294.8 | 219.6 | 202.5 | 227.2 | 251.2 | 176.5 | 272.2 | 317.0 | 224.3 | 1.0  | 10.2 | 12.3 |
|             | Jul | 258.4 | 249.6 | 231.5 | 259.6 | 258.8 | 187.2 | 194.3 | 297.0 | 222.1 | 199.8 | 227.2 | 252.6 | 181.8 | 273.1 | 319.0 | 227.9 | 0.3  | 9.5  | 12.0 |
|             | Aug | 262.7 | 251.9 | 234.0 | 266.8 | 265.7 | 193.8 | 196.0 | 301.8 | 226.6 | 203.4 | 233.8 | 253.1 | 179.0 | 273.9 | 319.3 | 231.2 | 1.7  | 9.3  | 11.6 |
|             | Sep | 266.3 | 256.9 | 237.1 | 269.1 | 267.5 | 193.5 | 197.9 | 305.7 | 225.1 | 206.6 | 234.5 | 252.6 | 179.6 | 276.0 | 320.9 | 231.4 | 1.4  | 10.3 | 11.4 |
|             | Oct | 267.6 | 259.3 | 239.6 | 269.6 | 267.7 | 195.8 | 199.1 | 311.5 | 225.7 | 205.8 | 234.3 | 253.6 | 191.4 | 276.5 | 323.4 | 232.1 | 0.5  | 10.6 | 11.1 |
|             | Nov | 267.8 | 258.9 | 238.6 | 270.4 | 269.4 | 198.0 | 201.2 | 310.5 | 227.0 | 207.3 | 236.4 | 254.8 | 189.3 | 277.0 | 324.3 | 238.8 | 0.1  | 10.5 | 11.0 |
|             | Dec | 270.6 | 259.3 | 238.8 | 276.2 | 275.2 | 198.2 | 201.9 | 319.7 | 226.4 | 207.4 | 246.8 | 253.3 | 185.4 | 278.0 | 329.8 | 233.5 | 1.0  | 10.3 | 10.8 |
| <b>2012</b> | Jan | 279.6 | 268.3 | 249.6 | 278.8 | 281.7 | 198.2 | 199.9 | 319.5 | 227.7 | 207.3 | 245.1 | 258.6 | 187.3 | 278.9 | 332.9 | 239.5 | 3.3  | 12.6 | 10.9 |
|             | Feb | 280.3 | 268.7 | 250.0 | 279.1 | 281.9 | 205.2 | 199.9 | 319.5 | 227.7 | 207.3 | 245.3 | 258.6 | 187.3 | 279.2 | 332.9 | 239.5 | 0.2  | 11.8 | 11.0 |
|             | Mar | 284.8 | 280.8 | 259.9 | 284.9 | 284.0 | 200.8 | 220.7 | 338.6 | 245.9 | 219.1 | 257.7 | 269.7 | 190.9 | 304.7 | 336.7 | 250.4 | 1.6  | 12.1 | 10.9 |



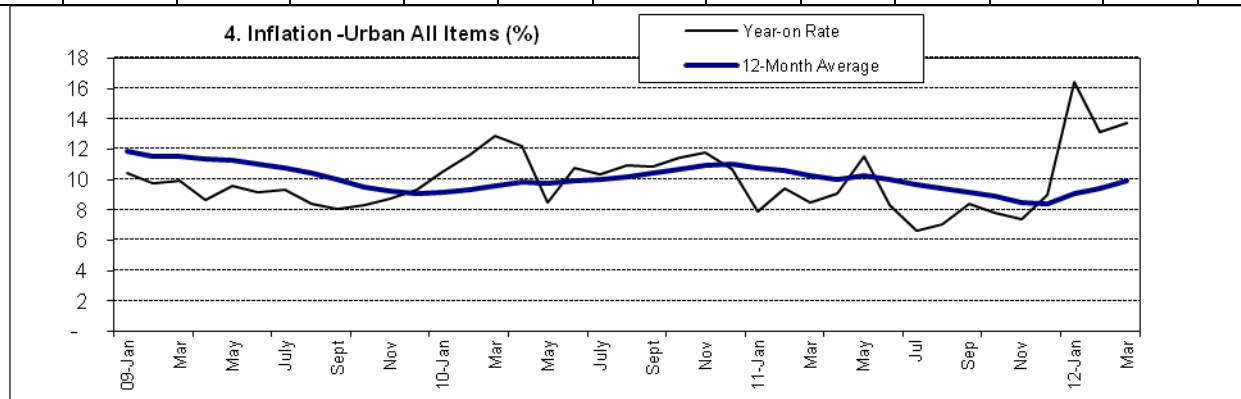
**Table 3 Urban Consumer Price Index (Base November 2009 = 100)**

|                |  | All Items | All Items less Farm Produce. | All Items less Farm Produce, and Energy | Imported Food | Food   | Food & Non Alcoholic Bev. | Alcoholic Beverage. Tobacco and Kola | Clothing and Footwear | Housing Water, Electricity. Gas and Other Fuel | Furnishings & Household Equipment Maintenance. | Health. | Transport | Communication | Recreation & Culture. | Education | Restaurant & Hotels | Miscellaneous Goods & Services | Month-on (%) | Year-on (%) | 12-month average (%) |
|----------------|--|-----------|------------------------------|---|---------------|--------|---------------------------|--------------------------------------|-----------------------|--|--|---------|-----------|---------------|-----------------------|-----------|---------------------|--------------------------------|--------------|-------------|----------------------|
| <b>Weights</b> |  | 1000      | 575.22                       | 440.93                                  | 155.13        | 476.82 | 490.59                    | 11.19                                | 65.5                  | 191.51   | 49.74  | 27.4    | 74.54     | 10.14         | 7.2                   | 40.05     | 14.49               | 17.65                          |              |             |                      |

Please note that the above weights are only expenditure weights which are still adjusted by population across 37 states. They should not be taken as the final weights in the computation of the CPI

|             |      |      |      |       |  |      |      |       |      |       |       |       |      |       |       |      |       |       |      |      |      |
|-------------|------|------|------|-------|--|------|------|-------|------|-------|-------|-------|------|-------|-------|------|-------|-------|------|------|------|
| <b>2007</b> | Jan  | 74.5 | 80.3 | 78.2  |  | 71.6 | 71.6 | 97.4  | 89.1 | 75.8  | 78.1  | 86.6  | 89.8 | 99.1  | 96.3  | 74.5 | 78.1  | 77.7  | -0.1 | 11.9 | 11.0 |
|             | Feb  | 75.3 | 80.3 | 78.8  |  | 73.0 | 73.0 | 97.8  | 90.2 | 75.2  | 78.0  | 85.0  | 89.5 | 98.3  | 93.2  | 77.3 | 77.9  | 75.2  | 1.1  | 9.2  | 10.5 |
|             | Mar  | 77.6 | 82.5 | 81.5  |  | 75.1 | 75.1 | 95.5  | 90.2 | 80.6  | 79.9  | 84.0  | 84.9 | 98.9  | 91.2  | 73.5 | 74.7  | 92.0  | 3.1  | 11.2 | 10.3 |
|             | Apr  | 78.2 | 82.5 | 81.5  |  | 75.9 | 75.8 | 96.6  | 90.2 | 80.8  | 81.3  | 81.4  | 84.2 | 99.1  | 92.5  | 80.4 | 76.6  | 92.3  | 0.7  | 11.2 | 10.1 |
|             | May  | 79.2 | 86.0 | 84.2  |  | 75.4 | 75.4 | 98.6  | 84.9 | 85.6  | 82.3  | 75.7  | 94.4 | 99.1  | 92.0  | 79.7 | 71.5  | 87.3  | 1.3  | 12.4 | 10.3 |
|             | Jun  | 79.9 | 85.7 | 83.1  |  | 76.4 | 76.4 | 98.0  | 84.4 | 84.1  | 84.2  | 80.6  | 93.1 | 99.1  | 96.4  | 79.4 | 83.5  | 81.8  | 0.8  | 12.0 | 10.6 |
| <b>2008</b> | Jan  | 84.0 | 89.9 | 90.5  |  | 80.8 | 80.9 | 101.8 | 91.7 | 87.8  | 89.7  | 91.1  | 92.8 | 101.4 | 98.8  | 89.4 | 91.8  | 87.7  | 0.9  | 12.7 | 10.7 |
|             | Feb  | 85.2 | 90.9 | 91.3  |  | 82.1 | 82.2 | 102.6 | 93.0 | 89.2  | 90.1  | 92.0  | 92.5 | 101.5 | 99.6  | 86.7 | 91.9  | 88.6  | 1.4  | 13.1 | 11.1 |
|             | Mar  | 85.4 | 91.2 | 91.7  |  | 82.3 | 82.4 | 103.5 | 92.3 | 88.8  | 90.2  | 94.4  | 92.1 | 101.5 | 99.0  | 85.6 | 96.9  | 89.4  | 0.2  | 10.1 | 11.0 |
|             | Apr  | 86.9 | 92.5 | 93.2  |  | 83.9 | 84.0 | 105.7 | 93.4 | 90.1  | 91.4  | 97.5  | 92.5 | 101.5 | 100.7 | 85.2 | 97.4  | 90.7  | 1.7  | 11.1 | 11.0 |
|             | May  | 87.3 | 92.8 | 92.5  |  | 84.6 | 84.6 | 104.8 | 94.0 | 90.4  | 92.1  | 97.5  | 91.5 | 101.5 | 101.3 | 84.5 | 96.5  | 90.4  | 0.6  | 10.3 | 10.8 |
|             | Jun  | 89.1 | 94.7 | 95.3  |  | 86.2 | 86.2 | 103.7 | 95.1 | 93.2  | 95.9  | 96.2  | 91.2 | 99.1  | 98.9  | 84.7 | 98.8  | 91.4  | 2.0  | 11.5 | 10.8 |
|             | Jul  | 90.4 | 96.6 | 97.6  |  | 87.3 | 87.3 | 105.4 | 97.7 | 95.6  | 96.5  | 96.6  | 91.5 | 99.3  | 99.3  | 84.7 | 99.7  | 93.0  | 1.5  | 12.9 | 11.0 |
|             | Aug  | 91.9 | 98.2 | 99.0  |  | 88.5 | 88.6 | 104.5 | 97.7 | 98.1  | 96.8  | 95.7  | 92.3 | 99.3  | 98.6  | 86.5 | 101.6 | 92.2  | 1.6  | 12.1 | 11.1 |
|             | Sep  | 92.3 | 97.9 | 97.7  |  | 89.2 | 89.2 | 101.6 | 97.3 | 98.7  | 95.9  | 94.2  | 91.8 | 100.7 | 97.1  | 86.6 | 100.7 | 92.7  | 0.5  | 13.5 | 11.5 |
|             | Oct  | 92.1 | 97.8 | 98.2  |  | 88.9 | 89.0 | 98.3  | 97.2 | 98.2  | 97.8  | 94.7  | 92.0 | 99.8  | 97.9  | 88.4 | 102.3 | 92.1  | -0.2 | 13.8 | 11.9 |
|             | Nov  | 91.9 | 96.8 | 97.3  |  | 89.3 | 89.3 | 97.9  | 96.6 | 96.4  | 96.8  | 94.6  | 92.1 | 99.4  | 98.5  | 89.0 | 102.6 | 92.4  | -0.2 | 12.0 | 12.1 |
|             | Dec  | 92.8 | 97.8 | 97.9  |  | 89.6 | 89.7 | 97.5  | 98.5 | 98.8  | 96.2  | 95.9  | 93.9 | 99.3  | 98.6  | 90.9 | 102.7 | 93.7  | 0.9  | 11.4 | 12.0 |
| <b>2009</b> | Jan  | 92.8 | 96.6 | 97.8  |  | 90.5 | 90.5 | 97.6  | 97.8 | 96.4  | 96.3  | 96.3  | 94.0 | 99.3  | 97.8  | 92.3 | 102.0 | 96.0  | 0.0  | 10.4 | 11.8 |
|             | Feb  | 93.6 | 96.3 | 97.6  |  | 92.0 | 92.0 | 98.6  | 98.2 | 95.5  | 96.2  | 98.1  | 93.0 | 99.3  | 97.8  | 90.9 | 103.2 | 95.2  | 0.8  | 9.8  | 11.6 |
|             | Mar  | 93.9 | 96.5 | 98.0  |  | 92.4 | 92.4 | 98.8  | 97.9 | 95.5  | 96.5  | 98.3  | 94.1 | 99.3  | 96.7  | 93.0 | 104.1 | 95.1  | 0.4  | 9.9  | 11.5 |
|             | Apr  | 94.3 | 97.4 | 98.8  |  | 92.5 | 92.6 | 99.9  | 98.6 | 96.4  | 98.0  | 99.6  | 95.7 | 99.3  | 97.8  | 89.7 | 104.4 | 95.6  | 0.5  | 8.6  | 11.3 |
|             | May  | 95.7 | 98.2 | 98.7  |  | 94.1 | 94.1 | 100.1 | 96.9 | 98.1  | 96.2  | 97.9  | 97.1 | 99.3  | 98.9  | 96.3 | 104.2 | 98.2  | 1.4  | 9.5  | 11.2 |
|             | June | 97.2 | 98.8 | 99.7  |  | 96.3 | 96.3 | 100.6 | 97.0 | 98.5  | 97.4  | 99.3  | 96.7 | 99.3  | 99.9  | 96.7 | 106.2 | 98.1  | 1.6  | 9.2  | 11.0 |
|             | July | 98.9 | 99.5 | 100.3 |  | 98.4 | 98.4 | 102.1 | 99.9 | 100.2 | 98.8  | 100.9 | 95.7 | 100.8 | 100.1 | 97.6 | 100.1 | 98.5  | 1.7  | 9.3  | 10.7 |
|             | Aug  | 99.6 | 99.7 | 99.4  |  | 99.3 | 99.3 | 100.7 | 99.9 | 100.6 | 99.7  | 100.3 | 95.1 | 102.1 | 101.2 | 97.4 | 105.2 | 99.9  | 0.7  | 8.4  | 10.4 |
|             | Sep  | 99.8 | 99.5 | 99.2  |  | 99.8 | 99.8 | 99.8  | 99.7 | 100.3 | 101.1 | 98.8  | 96.0 | 101.5 | 100.5 | 99.5 | 99.7  | 100.8 | 0.2  | 8.1  | 10.0 |

|      |     |       |       |       |       |       |       |       |       |       |       |       |       |       |       |       |       |       |      |      |      |
|------|-----|-------|-------|-------|-------|-------|-------|-------|-------|-------|-------|-------|-------|-------|-------|-------|-------|-------|------|------|------|
|      | Oct | 99.8  | 99.9  | 99.3  |       | 99.6  | 99.6  | 99.8  | 100.3 | 100.8 | 100.9 | 99.9  | 96.8  | 100.9 | 100.1 | 98.9  | 98.0  | 100.7 | 0.0  | 8.3  | 9.5  |
|      | Nov | 100.0 | 100.0 | 100.0 | 100.0 | 100.0 | 100.0 | 100.0 | 100.0 | 100.0 | 100.0 | 100.0 | 100.0 | 100.0 | 100.0 | 100.0 | 100.0 | 100.0 | 0.2  | 8.8  | 9.3  |
|      | Dec | 101.4 | 101.3 | 101.8 | 100.5 | 101.6 | 101.7 | 99.9  | 100.9 | 101.4 | 100.8 | 101.6 | 102.0 | 99.2  | 104.2 | 100.7 | 103.2 | 101.6 | 1.4  | 9.3  | 9.1  |
| 2010 | Jan | 102.6 | 102.5 | 102.7 | 101.1 | 102.8 | 102.8 | 100.7 | 103.1 | 102.6 | 101.9 | 102.4 | 103.5 | 99.7  | 105.8 | 102.5 | 108.3 | 102.8 | 1.2  | 10.5 | 9.1  |
|      | Feb | 104.4 | 105.4 | 105.4 | 103.1 | 102.9 | 103.6 | 101.6 | 103.6 | 104.4 | 103.6 | 105.4 | 103.9 | 100.1 | 99.4  | 108.0 | 106.7 | 106.3 | 1.8  | 11.6 | 9.3  |
|      | Mar | 106.0 | 105.7 | 105.9 | 103.5 | 106.1 | 105.9 | 103.8 | 105.9 | 104.8 | 106.1 | 106.8 | 108.1 | 100.9 | 107.1 | 106.8 | 107.5 | 106.1 | 1.5  | 12.9 | 9.6  |
|      | Apr | 105.9 | 105.4 | 105.6 | 103.4 | 106.3 | 106.1 | 103.9 | 106.0 | 103.9 | 105.5 | 106.9 | 106.7 | 100.8 | 108.3 | 106.6 | 111.5 | 107.0 | -0.1 | 12.2 | 9.9  |
|      | May | 103.8 | 103.7 | 104.9 | 104.5 | 103.8 | 104.7 | 102.0 | 104.7 | 99.2  | 103.0 | 104.1 | 105.9 | 101.2 | 105.0 | 105.7 | 109.3 | 104.8 | -1.9 | 8.5  | 9.8  |
|      | Jun | 107.7 | 107.0 | 108.0 | 110.0 | 108.5 | 108.6 | 106.8 | 108.7 | 105.2 | 108.7 | 107.9 | 106.2 | 103.4 | 104.0 | 106.8 | 108.6 | 109.3 | 3.7  | 10.8 | 9.9  |
|      | Jul | 109.1 | 107.9 | 108.4 | 109.1 | 110.4 | 110.6 | 109.2 | 110.4 | 103.9 | 108.4 | 111.6 | 109.3 | 104.0 | 102.8 | 106.7 | 106.4 | 110.6 | 1.3  | 10.3 | 10.0 |
|      | Aug | 110.5 | 109.0 | 109.9 | 111.0 | 112.8 | 112.9 | 110.0 | 112.1 | 103.0 | 110.7 | 113.0 | 110.0 | 100.9 | 106.4 | 108.1 | 111.6 | 111.7 | 1.3  | 10.9 | 10.2 |
|      | Sep | 110.6 | 109.4 | 110.5 | 113.0 | 112.6 | 112.4 | 106.6 | 112.4 | 106.0 | 110.5 | 110.0 | 112.2 | 101.4 | 110.1 | 107.6 | 107.3 | 109.2 | 0.1  | 10.9 | 10.4 |
|      | Oct | 111.2 | 110.0 | 110.1 | 114.3 | 113.5 | 113.5 | 109.6 | 111.6 | 110.7 | 109.4 | 110.8 | 105.8 | 101.4 | 109.0 | 108.4 | 106.0 | 110.8 | 0.5  | 11.5 | 10.7 |
|      | Nov | 111.7 | 111.3 | 111.1 | 113.4 | 112.8 | 112.8 | 110.0 | 112.2 | 111.0 | 111.1 | 111.8 | 110.4 | 101.1 | 109.7 | 107.9 | 107.8 | 113.1 | 0.5  | 11.7 | 10.9 |
|      | Dec | 112.2 | 111.2 | 111.0 | 113.5 | 113.4 | 113.4 | 109.7 | 113.8 | 111.8 | 111.5 | 112.9 | 111.7 | 100.8 | 109.2 | 109.3 | 111.3 | 112.7 | 0.4  | 10.7 | 11.0 |
| 2011 | Jan | 110.7 | 108.5 | 106.0 | 67.2  | 111.7 | 116.5 | 107.8 | 114.9 | 110.8 | 112.4 | 111.6 | 108.3 | 105.8 | 108.1 | 111.2 | 113.2 | 111.6 | -1.4 | 7.9  | 10.8 |
|      | Feb | 114.2 | 114.1 | 114.4 | 117.6 | 115.5 | 115.2 | 110.2 | 115.1 | 115.5 | 114.4 | 118.6 | 111.6 | 101.9 | 103.7 | 111.7 | 114.9 | 114.6 | 3.2  | 9.4  | 10.6 |
|      | Mar | 115.0 | 114.9 | 114.2 | 118.0 | 116.0 | 116.3 | 109.8 | 115.7 | 118.2 | 115.1 | 120.5 | 111.9 | 101.8 | 105.1 | 111.6 | 115.9 | 113.8 | 0.7  | 8.5  | 10.3 |
|      | Apr | 115.5 | 116.3 | 116.1 | 114.9 | 116.4 | 115.5 | 112.3 | 116.3 | 116.1 | 114.8 | 117.8 | 112.2 | 102.5 | 106.1 | 111.6 | 115.1 | 115.5 | 0.5  | 9.1  | 10.0 |
|      | May | 115.8 | 116.8 | 116.7 | 116.0 | 116.7 | 116.2 | 112.9 | 117.2 | 116.0 | 116.4 | 120.1 | 116.2 | 102.8 | 105.6 | 111.7 | 115.9 | 114.7 | 0.2  | 11.5 | 10.2 |
|      | Jun | 116.6 | 116.6 | 116.3 | 112.4 | 118.0 | 117.2 | 112.1 | 117.2 | 116.3 | 115.4 | 121.1 | 116.5 | 102.0 | 106.5 | 111.7 | 116.8 | 114.7 | 0.7  | 8.3  | 10.0 |
|      | Jul | 116.3 | 116.8 | 115.6 | 111.8 | 118.0 | 117.6 | 112.2 | 117.4 | 118.3 | 116.7 | 118.8 | 119.0 | 103.4 | 104.9 | 112.5 | 117.3 | 115.8 | -0.3 | 6.6  | 9.7  |
|      | Aug | 118.3 | 118.7 | 117.8 | 113.4 | 119.9 | 119.1 | 113.8 | 117.9 | 119.9 | 119.7 | 121.1 | 122.1 | 103.4 | 107.9 | 112.6 | 116.1 | 116.9 | 1.7  | 7.1  | 9.4  |
|      | Sep | 120.0 | 121.3 | 119.6 | 115.5 | 120.7 | 119.8 | 114.1 | 118.4 | 124.8 | 120.2 | 123.6 | 121.3 | 103.7 | 108.2 | 113.2 | 117.7 | 117.2 | 1.4  | 8.4  | 9.2  |
|      | Oct | 119.9 | 121.2 | 119.1 | 115.5 | 120.9 | 120.0 | 114.6 | 119.1 | 125.6 | 120.3 | 121.7 | 121.3 | 104.3 | 111.1 | 113.2 | 118.8 | 116.7 | -0.1 | 7.8  | 8.9  |
|      | Nov | 120.0 | 121.1 | 118.9 | 119.0 | 120.8 | 119.7 | 115.5 | 120.9 | 125.1 | 119.7 | 123.3 | 122.8 | 105.0 | 108.6 | 113.7 | 119.0 | 120.5 | 0.1  | 7.4  | 8.5  |
|      | Dec | 122.3 | 122.0 | 119.6 | 121.1 | 124.5 | 123.8 | 115.2 | 120.2 | 128.0 | 119.2 | 122.1 | 128.2 | 104.6 | 107.9 | 114.6 | 121.1 | 117.4 | 2.0  | 9.0  | 8.4  |
| 2012 | Jan | 128.9 | 128.2 | 127.4 | 113.4 | 125.5 | 127.1 | 119.3 | 119.7 | 135.4 | 120.6 | 123.3 | 127.4 | 105.9 | 108.9 | 114.9 | 123.4 | 119.9 | 5.3  | 16.4 | 9.1  |
|      | Feb | 129.2 | 128.4 | 127.5 | 113.5 | 126.3 | 126.2 | 119.3 | 119.7 | 135.5 | 120.6 | 123.3 | 127.5 | 105.9 | 108.9 | 114.9 | 123.4 | 119.9 | 0.3  | 13.1 | 9.4  |
|      | Mar | 130.7 | 132.6 | 132.1 | 129.5 | 129.1 | 128.9 | 113.2 | 135.2 | 136.9 | 127.4 | 129.0 | 137.6 | 110.6 | 115.1 | 124.2 | 122.9 | 131.4 | 1.2  | 13.7 | 9.9  |

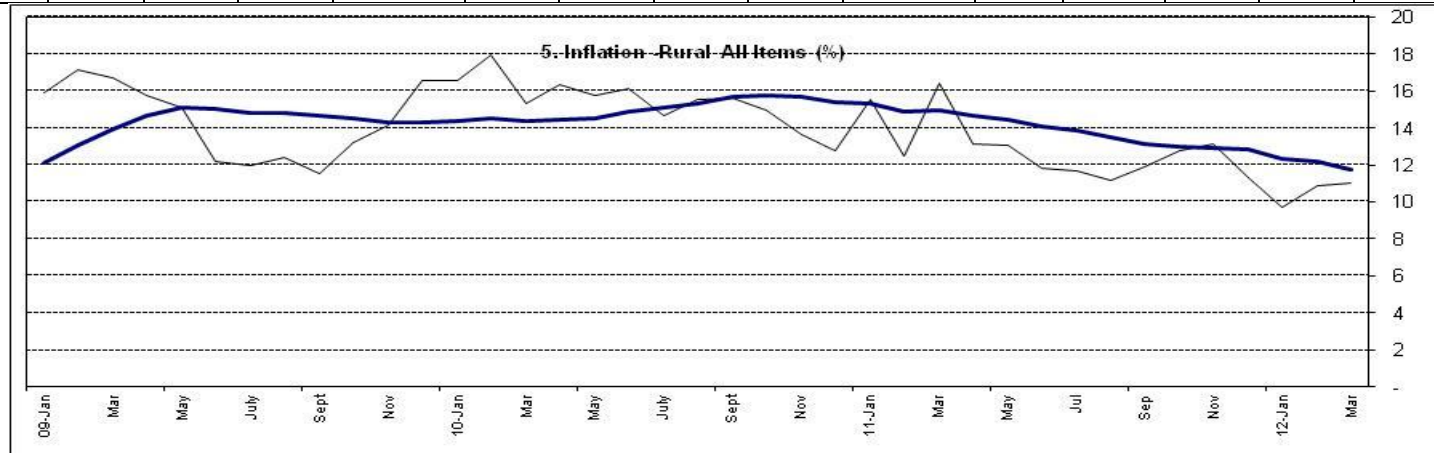


**Table 4 Rural Consumer Price Index (Base November 2009 = 100)**

|  |      | All Items | All Items less Farm Produce. | All Items less Farm Produce. and Energy | Imported Food | Food  | Food & Non Alcoholic Bev. | Alcoholic Beverage. Tobacco and Kola | Clothing and Footwear | Housing water, Electricity. Gas and Other Fuel | Furnishings & Household Equipment Maintenance. | Health. | Transport | Communication | Recreation & Culture. | Education | Restaurant & Hotels | Miscellaneous Goods & Services | Month-on (%) | Year-on (%) | 12-month average (%) |
|--|------|-----------|------------------------------|---|---------------|-------|---------------------------|--------------------------------------|-----------------------|--|--|---------|-----------|---------------|-----------------------|-----------|---------------------|--------------------------------|--------------|-------------|----------------------|
| Please note that the weights below are only expenditure weights which are still adjusted by population across 37 states. They should not be taken as the final weights in the computation of the CPI |      |           |                              |   |               |       |                           |                                      |                       |  |  |         |           |               |                       |           |                     |                                |              |             |                      |
| <i>Weights</i>   |      | 1000.0    | 503.1                        | 417.4                                   | 113.7         | 532.3 | 540.9                     | 10.6                                 | 85.7                  | 147.2  | 50.7   | 32.2    | 57.2      | 4.0           | 6.7                   | 38.9      | 10.1                | 15.8                           |              |             |                      |
| 2008   | Jan  | 76.7      | 81.7                         | 78.1                                    |               | 73.7  | 74.0                      | 90.3                                 | 80.5                  | 80.6   | 71.2   | 77.5    | 76.0      | 67.7          | 82.8                  | 61.8      | 68.3                | 77.4                           | 1.7          | 6.5         | 2.9                  |
|  | Feb  | 76.4      | 83.0                         | 81.8                                    |               | 72.7  | 73.0                      | 87.2                                 | 79.5                  | 80.3   | 71.3   | 75.8    | 81.4      | 67.3          | 79.5                  | 64.7      | 70.7                | 76.1                           | -0.3         | 5.5         | 2.9                  |
|  | Mar  | 77.2      | 78.0                         | 75.4                                    |               | 76.8  | 77.1                      | 91.4                                 | 77.3                  | 76.4   | 74.5   | 78.8    | 71.5      | 65.4          | 81.8                  | 64.5      | 69.8                | 70.8                           | 1.1          | 6.6         | 3.2                  |
|  | Apr  | 78.4      | 79.2                         | 78.0                                    |               | 77.9  | 78.2                      | 87.8                                 | 85.0                  | 77.2   | 75.5   | 82.4    | 82.0      | 87.6          | 80.2                  | 62.6      | 74.4                | 71.8                           | 1.5          | 6.7         | 3.7                  |
|  | May  | 80.4      | 82.3                         | 81.0                                    |               | 79.5  | 79.7                      | 93.4                                 | 87.2                  | 79.6   | 78.5   | 84.5    | 81.9      | 94.3          | 81.6                  | 65.7      | 89.3                | 82.9                           | 2.6          | 9.4         | 4.4                  |
|  | Jun  | 84.1      | 84.6                         | 85.0                                    |               | 83.9  | 84.1                      | 94.0                                 | 90.2                  | 82.4   | 80.4   | 87.6    | 83.4      | 94.3          | 82.6                  | 72.4      | 91.8                | 82.1                           | 4.6          | 12.3        | 5.1                  |
|  | Jul  | 86.2      | 85.9                         | 82.7                                    |               | 86.5  | 86.6                      | 93.8                                 | 90.4                  | 84.8   | 82.4   | 90.8    | 86.6      | 95.6          | 85.8                  | 77.2      | 91.2                | 88.9                           | 2.5          | 14.5        | 6.2                  |
|  | Aug  | 87.0      | 86.1                         | 84.7                                    |               | 87.4  | 87.5                      | 95.1                                 | 93.5                  | 85.5   | 81.7   | 89.6    | 82.5      | 95.6          | 88.7                  | 81.0      | 95.6                | 84.4                           | 1.0          | 12.5        | 7.1                  |
|  | Sep  | 88.3      | 88.2                         | 86.4                                    |               | 88.2  | 88.3                      | 96.2                                 | 93.6                  | 88.3   | 82.1   | 90.7    | 82.5      | 95.2          | 89.8                  | 79.7      | 95.0                | 85.7                           | 1.4          | 12.8        | 8.1                  |
|  | Oct  | 87.6      | 87.4                         | 86.7                                    |               | 87.7  | 87.8                      | 97.2                                 | 94.7                  | 87.2   | 82.0   | 92.0    | 83.4      | 95.2          | 89.9                  | 81.1      | 94.9                | 89.1                           | -0.8         | 15.2        | 9.2                  |
|  | Nov  | 87.6      | 87.3                         | 86.6                                    |               | 87.7  | 87.7                      | 97.3                                 | 95.1                  | 86.5   | 81.2   | 93.8    | 84.3      | 95.2          | 91.1                  | 81.0      | 95.3                | 89.9                           | 0.0          | 16.3        | 10.3                 |
|  | Dec  | 88.2      | 88.1                         | 88.7                                    |               | 88.3  | 88.3                      | 97.5                                 | 95.2                  | 86.8   | 81.4   | 96.2    | 85.8      | 95.3          | 90.5                  | 84.4      | 97.7                | 92.2                           | 0.7          | 17.0        | 11.4                 |
| 2009   | Jan  | 88.9      | 88.5                         | 90.0                                    |               | 89.1  | 89.1                      | 97.5                                 | 96.2                  | 87.1   | 81.7   | 97.9    | 86.6      | 95.2          | 91.2                  | 84.5      | 97.8                | 92.1                           | 0.8          | 15.9        | 12.1                 |
|  | Feb  | 89.5      | 89.5                         | 90.2                                    |               | 89.6  | 89.6                      | 98.3                                 | 95.7                  | 89.0   | 81.9   | 99.0    | 85.6      | 95.2          | 89.7                  | 85.4      | 98.8                | 93.1                           | 0.7          | 17.2        | 13.1                 |
|  | Mar  | 90.2      | 89.8                         | 90.8                                    |               | 90.5  | 90.5                      | 98.0                                 | 96.1                  | 88.8   | 82.5   | 99.6    | 85.7      | 95.2          | 90.2                  | 87.0      | 97.9                | 94.7                           | 0.7          | 16.7        | 13.9                 |
|  | Apr  | 90.7      | 90.2                         | 91.7                                    |               | 91.3  | 91.3                      | 98.0                                 | 96.2                  | 88.5   | 84.4   | 102.4   | 92.0      | 95.2          | 90.8                  | 88.9      | 99.5                | 95.3                           | 0.6          | 15.7        | 14.6                 |
|  | May  | 92.6      | 92.3                         | 93.8                                    |               | 93.3  | 93.3                      | 98.8                                 | 96.5                  | 89.7   | 84.2   | 100.2   | 94.0      | 95.2          | 91.9                  | 88.4      | 98.0                | 91.3                           | 2.1          | 15.1        | 15.1                 |
|  | June | 94.4      | 93.7                         | 95.1                                    |               | 95.4  | 95.3                      | 98.6                                 | 97.1                  | 93.4   | 84.8   | 100.8   | 89.6      | 95.2          | 92.1                  | 88.6      | 98.2                | 97.5                           | 1.9          | 12.2        | 15.1                 |
|  | July | 96.5      | 95.5                         | 97.5                                    |               | 97.7  | 97.7                      | 100.4                                | 95.7                  | 95.9   | 99.6   | 102.5   | 87.2      | 98.3          | 94.7                  | 90.4      | 98.3                | 99.0                           | 2.3          | 12.0        | 14.8                 |
|  | Aug  | 97.8      | 96.1                         | 96.9                                    |               | 98.8  | 98.7                      | 99.6                                 | 98.3                  | 95.6   | 100.6  | 103.0   | 89.9      | 100.9         | 96.2                  | 101.3     | 98.9                | 100.1                          | 1.3          | 12.4        | 14.8                 |
|  | Sep  | 98.5      | 97.4                         | 98.2                                    |               | 99.4  | 99.3                      | 98.6                                 | 98.4                  | 96.8   | 97.2   | 103.9   | 93.2      | 100.9         | 95.8                  | 99.8      | 100.1               | 99.6                           | 0.7          | 11.5        | 14.7                 |
|  | Oct  | 99.2      | 98.4                         | 99.0                                    |               | 100.0 | 100.0                     | 99.5                                 | 98.9                  | 97.9   | 98.0   | 104.4   | 94.6      | 100.0         | 96.0                  | 96.6      | 99.6                | 98.9                           | 0.7          | 13.2        | 14.5                 |
|  | Nov  | 100.0     | 100.0                        | 100.0                                   | 100.0         | 100.0 | 100.0                     | 100.0                                | 100.0                 | 100.0  | 100.0  | 100.0   | 100.0     | 100.0         | 100.0                 | 100.0     | 100.0               | 100.0                          | 0.8          | 14.2        | 14.3                 |



|      |     |       |       |       |       |       |        |       |       |       |       |       |       |       |       |       |       |       |      |      |      |
|------|-----|-------|-------|-------|-------|-------|--------|-------|-------|-------|-------|-------|-------|-------|-------|-------|-------|-------|------|------|------|
|      | Dec | 102.8 | 101.7 | 102.1 | 102.3 | 103.1 | 103.5  | 103.5 | 102.0 | 99.2  | 102.4 | 102.0 | 101.6 | 100.6 | 99.9  | 102.1 | 102.0 | 101.9 | 2.8  | 16.6 | 14.3 |
| 2010 | Jan | 103.6 | 101.9 | 102.4 | 102.2 | 104.4 | 104.9  | 103.6 | 101.8 | 98.9  | 103.9 | 103.5 | 102.7 | 99.5  | 100.7 | 103.6 | 105.5 | 103.7 | 0.8  | 16.5 | 14.4 |
|      | Feb | 105.6 | 103.8 | 104.7 | 103.3 | 106.4 | 106.9  | 103.5 | 103.3 | 100.6 | 105.5 | 104.5 | 105.3 | 100.5 | 99.5  | 104.3 | 106.0 | 105.6 | 1.9  | 17.9 | 14.5 |
|      | Mar | 104.0 | 102.8 | 103.5 | 102.6 | 104.6 | 104.9  | 104.7 | 103.3 | 100.0 | 105.3 | 104.0 | 102.1 | 100.4 | 100.1 | 104.4 | 104.0 | 103.0 | -1.5 | 15.3 | 14.4 |
|      | Apr | 105.6 | 103.6 | 104.7 | 106.6 | 106.8 | 107.2  | 105.6 | 104.3 | 100.8 | 102.3 | 103.3 | 106.8 | 100.0 | 98.7  | 104.7 | 108.2 | 105.5 | 1.5  | 16.4 | 14.5 |
|      | May | 107.2 | 106.5 | 107.9 | 105.4 | 107.2 | 107.5  | 105.3 | 106.8 | 104.6 | 102.3 | 105.4 | 106.6 | 99.4  | 101.8 | 111.0 | 110.7 | 109.1 | 1.6  | 15.8 | 14.5 |
|      | Jun | 109.6 | 107.8 | 109.2 | 109.2 | 111.2 | 111.5  | 109.9 | 109.4 | 104.4 | 112.4 | 108.9 | 108.4 | 101.0 | 101.5 | 106.4 | 105.4 | 109.9 | 2.2  | 16.1 | 14.9 |
|      | Jul | 110.7 | 107.6 | 109.2 | 109.5 | 112.6 | 113.2  | 109.9 | 110.2 | 106.2 | 109.6 | 109.2 | 105.9 | 101.4 | 103.1 | 104.9 | 103.9 | 110.7 | 0.9  | 14.6 | 15.1 |
|      | Aug | 113.0 | 109.6 | 110.8 | 111.4 | 114.7 | 115.2  | 114.2 | 113.4 | 108.9 | 109.9 | 111.8 | 107.4 | 100.4 | 103.9 | 104.3 | 103.7 | 110.7 | 2.1  | 15.6 | 15.3 |
|      | Sep | 113.8 | 111.7 | 112.7 | 114.1 | 115.1 | 114.5  | 110.9 | 112.4 | 113.1 | 113.5 | 113.6 | 112.2 | 102.2 | 106.9 | 109.0 | 107.0 | 113.8 | 0.7  | 15.6 | 15.7 |
|      | Oct | 114.0 | 113.5 | 113.6 | 113.9 | 114.4 | 114.5  | 113.5 | 113.9 | 111.2 | 116.4 | 118.1 | 108.1 | 104.1 | 110.0 | 111.5 | 110.6 | 110.5 | 0.1  | 15.0 | 15.8 |
|      | Nov | 113.6 | 112.1 | 111.5 | 116.5 | 115.7 | 115.4  | 114.0 | 111.8 | 113.9 | 114.8 | 110.5 | 112.8 | 102.7 | 106.2 | 107.5 | 108.5 | 112.6 | -0.3 | 13.6 | 15.7 |
|      | Dec | 115.9 | 113.8 | 113.7 | 117.0 | 117.1 | 117.2  | 113.7 | 113.6 | 114.3 | 114.7 | 112.6 | 114.0 | 103.6 | 106.6 | 109.0 | 108.2 | 111.5 | 2.0  | 12.7 | 15.4 |
| 2011 | Jan | 119.7 | 119.5 | 118.9 | 120.1 | 116.5 | 120.5  | 113.0 | 114.0 | 116.4 | 114.5 | 111.1 | 110.0 | 101.8 | 108.5 | 109.4 | 108.2 | 114.5 | 3.3  | 15.6 | 15.3 |
|      | Feb | 118.8 | 116.7 | 116.4 | 129.4 | 119.4 | 120.2  | 116.1 | 116.8 | 114.1 | 116.6 | 111.4 | 121.9 | 107.4 | 108.4 | 109.7 | 110.1 | 113.8 | -0.8 | 12.5 | 14.9 |
|      | Mar | 121.1 | 119.6 | 120.2 | 120.6 | 119.9 | 119.8  | 115.2 | 117.3 | 114.2 | 116.6 | 115.0 | 118.4 | 107.8 | 109.2 | 110.6 | 109.1 | 111.9 | 1.9  | 16.4 | 15.0 |
|      | Apr | 119.4 | 119.2 | 119.4 | 122.6 | 121.1 | 120.10 | 116.4 | 116.1 | 125.1 | 116.0 | 116.7 | 116.9 | 107.2 | 107.8 | 111.2 | 111.9 | 114.1 | -1.3 | 13.1 | 14.7 |
|      | May | 121.2 | 120.6 | 120.8 | 124.4 | 120.1 | 120.40 | 116.9 | 119.0 | 125.5 | 116.7 | 113.8 | 115.4 | 108.1 | 108.8 | 112.1 | 112.0 | 116.4 | 1.5  | 13.0 | 14.5 |
|      | Jun | 122.6 | 122.4 | 122.8 | 111.5 | 121.9 | 121.49 | 116.0 | 118.6 | 126.0 | 117.1 | 118.8 | 120.1 | 108.7 | 109.2 | 112.6 | 112.1 | 120.6 | 1.1  | 11.8 | 14.1 |
|      | Jul | 123.6 | 122.8 | 123.4 | 113.3 | 122.4 | 122.45 | 112.5 | 117.9 | 126.0 | 118.2 | 117.9 | 122.1 | 108.5 | 116.2 | 112.8 | 113.1 | 123.2 | 0.8  | 11.7 | 13.8 |
|      | Aug | 125.6 | 123.3 | 123.8 | 118.1 | 126.9 | 127.0  | 118.6 | 119.4 | 128.4 | 120.1 | 119.9 | 121.8 | 108.8 | 110.9 | 113.2 | 114.2 | 125.4 | 1.6  | 11.1 | 13.5 |
|      | Sep | 127.4 | 125.3 | 125.3 | 119.4 | 128.2 | 128.0  | 118.0 | 121.2 | 127.2 | 118.4 | 121.3 | 123.1 | 108.3 | 111.0 | 114.2 | 114.0 | 125.2 | 1.4  | 11.9 | 13.2 |
|      | Oct | 128.6 | 127.8 | 128.0 | 118.1 | 128.4 | 127.9  | 120.1 | 121.8 | 131.0 | 118.8 | 121.8 | 123.0 | 108.6 | 122.1 | 114.6 | 114.8 | 126.4 | 0.9  | 12.8 | 13.0 |
|      | Nov | 128.6 | 127.4 | 127.3 | 128.6 | 129.1 | 129.6  | 121.8 | 122.6 | 130.5 | 120.7 | 122.2 | 123.7 | 108.9 | 121.6 | 114.6 | 115.1 | 129.7 | 0.0  | 13.1 | 13.0 |
|      | Dec | 129.0 | 127.1 | 127.0 | 128.8 | 131.1 | 131.1  | 122.2 | 124.1 | 135.1 | 120.6 | 123.4 | 129.2 | 108.1 | 117.9 | 114.6 | 117.0 | 127.1 | 0.3  | 11.3 | 12.8 |
| 2012 | Jan | 131.3 | 129.9 | 130.7 | 128.4 | 132.4 | 134.0  | 126.4 | 122.3 | 128.7 | 120.6 | 122.2 | 128.2 | 111.0 | 119.2 | 115.2 | 117.2 | 130.8 | 1.8  | 9.7  | 12.3 |
|      | Feb | 131.6 | 130.0 | 130.9 | 128.4 | 131.8 | 131.7  | 126.4 | 122.3 | 128.8 | 120.6 | 122.2 | 128.2 | 111.0 | 119.2 | 115.2 | 117.2 | 130.8 | 0.3  | 10.9 | 12.2 |
|      | Mar | 134.4 | 137.1 | 136.5 | 130.3 | 134.9 | 134.7  | 127.4 | 132.3 | 142.7 | 133.2 | 130.2 | 130.0 | 114.6 | 117.9 | 126.7 | 120.2 | 131.7 | 2.1  | 11.0 | 11.8 |



**Table 5 Combined Urban And Rural State Consumer Price Index  
(Base Period: November 2009 = 100)**

| State       | Mar-11 |           | Feb-12 |           | Mar-12 |           |
|-------------|--------|-----------|--------|-----------|--------|-----------|
|             | Food   | All Items | Food   | All Items | Food   | All Items |
| Abia        | 113.6  | 117.6     | 130.5  | 128.3     | 131.6  | 128.1     |
| Abuja       | 119.5  | 116.8     | 139.0  | 137.6     | 127.3  | 136.6     |
| Adamawa     | 141.8  | 126.6     | 133.2  | 133.7     | 129.3  | 124.0     |
| Akwa Ibom   | 121.8  | 113.4     | 123.6  | 125.6     | 122.0  | 132.5     |
| Anambra     | 105.9  | 103.5     | 128.3  | 127.8     | 127.9  | 134.1     |
| Bauchi      | 101.7  | 107.7     | 140.0  | 135.1     | 127.5  | 132.5     |
| Bayelsa     | 117.7  | 117.7     | 124.7  | 128.0     | 139.2  | 127.8     |
| Benue       | 111.7  | 111.8     | 133.9  | 130.7     | 129.3  | 132.0     |
| Borno       | 111.3  | 167.9     | 133.3  | 135.6     | 138.4  | 121.8     |
| Cross River | 128.5  | 119.3     | 115.6  | 117.1     | 133.4  | 125.0     |
| Delta       | 132.2  | 123.5     | 125.1  | 129.0     | 132.3  | 116.8     |
| Ebonyi      | 120.4  | 115.4     | 125.2  | 125.3     | 124.4  | 133.2     |
| Edo         | 112.5  | 119.3     | 118.1  | 132.3     | 131.6  | 127.5     |
| Ekiti       | 110.7  | 118.5     | 121.4  | 139.0     | 143.1  | 126.2     |
| Enugu       | 120.6  | 120.3     | 145.3  | 129.3     | 123.2  | 141.5     |
| Gombe       | 108.3  | 113.2     | 135.6  | 130.6     | 133.0  | 127.6     |
| Imo         | 127.4  | 120.8     | 135.5  | 129.3     | 129.3  | 138.7     |
| Jigawa      | 112.6  | 110.4     | 138.6  | 137.3     | 137.5  | 133.3     |
| Kaduna      | 107.2  | 109.5     | 135.3  | 132.5     | 130.3  | 136.4     |
| Kano        | 103.4  | 102.0     | 144.5  | 138.4     | 132.6  | 138.2     |
| Katsina     | 133.8  | 119.3     | 138.1  | 128.8     | 124.5  | 128.1     |
| Kebbi       | 112.4  | 110.4     | 130.8  | 133.8     | 129.1  | 132.1     |
| Kogi        | 118.2  | 116.9     | 126.1  | 135.6     | 135.1  | 113.1     |
| Kwara       | 104.6  | 118.3     | 119.7  | 145.8     | 139.7  | 133.1     |
| Lagos       | 120.4  | 118.6     | 132.6  | 131.2     | 130.9  | 126.1     |
| Nassarawa   | 126.0  | 117.0     | 125.0  | 126.1     | 126.9  | 128.6     |
| Niger       | 114.7  | 116.2     | 127.3  | 130.1     | 129.3  | 123.9     |
| Ogun        | 119.1  | 120.5     | 116.1  | 119.4     | 125.8  | 138.8     |
| Ondo        | 123.8  | 120.8     | 131.2  | 130.3     | 132.7  | 125.4     |
| Osun        | 116.8  | 119.1     | 123.6  | 130.9     | 126.4  | 132.9     |
| Oyo         | 114.0  | 112.2     | 134.3  | 133.5     | 130.4  | 124.4     |
| Plateau     | 132.6  | 122.9     | 125.1  | 126.8     | 126.4  | 134.3     |
| Rivers      | 117.7  | 112.4     | 132.2  | 127.9     | 126.4  | 118.4     |
| Sokoto      | 109.8  | 111.1     | 149.2  | 143.4     | 128.1  | 135.0     |
| Taraba      | 116.6  | 114.6     | 133.0  | 128.9     | 130.4  | 133.3     |
| Yobe        | 119.2  | 116.2     | 137.3  | 134.1     | 131.3  | 129.3     |
| Zamfara     | 125.1  | 119.5     | 135.2  | 129.8     | 125.9  | 129.8     |

*Note: Note: Indices may not be used for inter-state price comparison because market baskets differ from state to state*