

CONSUMER PRICE INDEX

(BASE PERIOD NOVEMBER 2009 = 100)



No. 533
AUGUST 2014



NATIONAL BUREAU OF STATISTICS

BRIEF METHODOLOGY:

The CPI measures the average change over time in prices of goods and services consumed by people for day-to-day living. The construction of the CPI combines economic theory, sampling and other statistical techniques using data from other surveys to produce a weighted measure of average price changes in the Nigerian economy. The weighting occurs to capture the importance of the selected commodities in the entire index. The production of the CPI requires skills of economists, statisticians, computer scientists, data collectors and others.

Key in the construction of the price index is the selection of the market basket of goods and services. Every month, 10,534 informants spread across the country provide price data for the computation of the CPI. The market items currently comprise of 740 goods and services regularly priced.

The first stage in the calculation of the CPI is the collection of prices on each item (740 goods and services) from outlets in each sector (rural or urban) for each state. Prices are then averaged for each item according to sector across the state. The next step is to use the average price to calculate the basic index for each commodity: The current year price of each commodity is compared with a base year's price to obtain a relative price.

Next we use the Laspeyres formula to compute an aggregated index for each class (which has a multitude of commodities which have similar consumption purposes): Here the sum of the product of weights

(obtained from the expenditure survey) and relative prices for each item is divided by the sum of the weight of the items in that class, and the result multiplied by 100 gives the required index number. This index number is still classified according to the urban or rural classification sector for each of the 36 states and the FCT. This yields 85 classes then 48 groups which are then reclassified into 12 Divisions to derive:

1. The country composite index
2. The Urban National index
3. The Rural National index
4. The Combined Urban and Rural State Composite index

The survey methodology generates 3774 all items indices for all states and the FCT.

This edition of the Statistical News contains the revised Consumer Price Index (CPI) based on Nigeria Living Standard Survey (NLSS) 2003/2004. The consumption expenditure data were re-valued to November 2009, which is the base period for the revised CPI.

The May 2003 and September 1985 based indices are being continued using factors derived from the new CPI. All of these indices will yield the same price change for any commodity group contained in all the series. A new sub index – Imported Food Index- is available in the revised CPI.

Note: The urban and rural indices were weighted with the ratio of their populations to the national i.e. 0.455 and 0.545 respectively to compute the composite indices at the 12 COICOP functions and all items

levels. This may cause variance between a recalculated all items index using the weights published on table 2 and the published all items index because the published weights

were computed only from consumption expenditure survey result. The following breakdown highlights a non-exhaustive list of the components of the current CPI:

FOOD AND NON ALCOHOLIC BEVERAGES

Food

Bread and cereals

Meat

Fish

Milk, cheese and eggs

Oils and fats

Fruit

Vegetables

Potatoes, Yam & other tubers

Food products n.e.c

Coffee, tea and cocoa

Soft drinks

ALCOHOLIC BEVERAGES, TOBACCO AND KOLA

Spirits

Wine

Tobacco

Narcotics

CLOTHING AND FOOTWEAR

Clothing materials, other articles of clothing

Garments

Cleaning, repair and hire of clothing

Shoes and other footwear

Repair and hire of footwear

HOUSING, WATER, ELECTRICITY, GAS

Actual and imputed rentals for housing

Water supply

Miscellaneous services relating to the dwelling

Electricity

Gas

Liquid fuel

Solid fuels

FURNISHINGS, HOUSEHOLD EQUIPMENT

Furniture and furnishings

Carpets and other floor coverings

Repair of Furniture

Household textiles

Major household appliances whether electric or not

Repair of household appliances

Glassware, tableware and household utensils
Non-durable household goods
Domestic services and household services
HEALTH
Pharmaceutical products
Medical services
Dental services
Paramedical services
Hospital services
TRANSPORT
Motor cars
Motor cycles
Bicycles
Vehicle spare parts
Fuels and lubricants for personal transportation
Maintenance and repair of personal transport
Passenger transport by road
Passenger transport by air
Passenger transport by sea and inland waterways
COMMUNICATION
Postal services
Telephone and telefax equipment
Telephone and telefax services
RECREATION AND CULTURE
Audio-visual, photographic and information processing equipments
Photographic development
Musical instrument
Recreational and sporting services
Games of chance
EDUCATION
Books & stationery
RESTAURANTS AND HOTELS
Catering services
Accommodation services
MISCELLANEOUS GOODS AND SERVICES
Hairdressing salons and personal grooming establishments
Appliances, articles and products for personal care
Jewellery, clocks and watches
Insurance
Other services.

ALL ITEMS INDEX

In August 2014, the Consumer Price Index (CPI) which measures inflation recorded an uptick from the previous month. Prices rose by 8.5 percent (year-on-year), up 0.2 percentage points from 8.3 percent recorded in July. This was the sixth consecutive month of a faster increase in the pace of the Headline index relative to the previous month. The faster pace of price increases recorded in the Headline index in August was as a result of increases in the twelve major Classification of Individual Consumption by Purpose (COICOP) divisions that yield the Headline index.

The Food index edged higher to 10.0 percent in August, from 9.9 percent recorded in July. Prices were pushed higher as a result of higher prices in a broad array of Food groups that contribute to the index. Prices were however slowed by a muted increase in the Bread and Cereals group.

Increase in prices in the All Items less Farm Product or Core sub-index continued to be muted for the second consecutive month, after increasing at a faster pace for the previous three months. Prices rose by 6.1 percent (year-on-year), 0.9 percentage points lower from the rate recorded in July.

It should be noted that the Headline Index is made up of the Core Index and Farm Produce items. As Processed Foods are included in both the Core and Food sub-indices, this implies that these sub-indices are not mutually-exclusive.

On a month on month basis, price increases

in the headline index slowed for the third consecutive month. Prices slowed by 0.2

COMPOSITION OF THE MAJOR INDEX AND SUB-INDICES

**All Items = Farm Produce +
Core index**

**Food = Farm Produce +
Processed Foods**

**Core = All Items – Farm
Produce**

percentage points to 0.48 percent in August, from 0.65 percent in July. Prices slowed in all COICOP divisions that yield the headline index except for the Health, Transportation, Education, and Miscellaneous Groups and Services Divisions.

Urban prices increased by 0.2 percentage points, to 8.7 percent (year-on-year) in August. Urban prices have increased at a faster pace for the fourth consecutive month. Rural prices have exhibited the same trend over the period increasing by 0.3 percentage points from 8.1 percent in July to 8.4 in August.

On a month on month basis, the pace of increases in urban prices has slowed for two straight months. The Urban Headline index increased by 0.51 percent in August, roughly 0.2 percentage points lower from July. The Rural All-items index rose at a slower pace by 0.47 percent in August, down from 0.60 percent in July. The percentage change in the average composite CPI for the twelve-month period ending in August over the average of the CPI for the previous twelve-month period was recorded at 8.0 percent, unchanged from the average twelve month rate of change recorded in July 2014. The corresponding 12-month year-on-year average percentage change for the Urban index was 8.1 percent in August, unchanged for the third consecutive month, while the corresponding Rural index increased marginally to 7.9 percent in August.

FOOD INDEX

As observed by the Food sub-index, food prices increased by 10.0 percent (year-on-year) in August, marginally higher from 9.9 percent recorded in July. This is the highest price increase (year-on-year) on a monthly basis recorded since July of 2013.

On a month-on-month basis, food prices increased by 0.6 percent in August, down from 0.8 percent recorded in July.

On a month-on-month basis, the highest price increases were recorded in the Coffee, Tea and Cocoa; Fruits, Meats, Fish, Oils and Fats groups. The average annual rate of change of the Food sub-index for the twelve-month period ending in August 2014 over the previous twelve month average was 9.5 percent. The twelve month rate of change has held steady for the previous three months.

ALL ITEMS LESS FARM PRODUCE

The pace of increases in the “All items less Farm Produce” or Core index, which excludes the prices of volatile agricultural products slowed for the second consecutive month in August. Prices rose by 6.3 percent (year-on-year), down from 7.1 percent in August, and surpassing January’s low of 6.6 percent.

On a month-on-month basis, prices increased at a faster rate in August. Prices rose by 0.4 percent, up by 0.2

percentage points from July. The fastest increases were recorded in the Solid Fuels, Wine; Audio-visual, Photographic and Information Processing Equipment; and Fuels and Lubricants for Personal Transport groups. The average 12 month annual rate of rise of the index was recorded at 7.3 percent for the twelve-month period ending in August 2014, down from the 12 month rate recorded in July which was recorded at 7.3 percent.

For enquiries relating to this CPI report, please contact:
ykale@nigerianstat.gov.ng and udeokenwa@yahoo.com

Follow us on twitter [@nigerianstat](https://twitter.com/nigerianstat) and online at www.nigerianstat.gov.ng

Table 1 Composite Consumer Price Index (Base November 2009 = 100)

		All Items Index (Farm Produce + All Items Less Farm Produce)					All Items less Farm Produce (includes Processed Food)				Food (Farm Produce + Processed Food)			
		Monthly	12- Month Average	Month- on change (%)	Year-on change (%)	12- Month average change (%)	Monthly	Month- on change (%)	Year- on change (%)	12- Month average change (%)	Monthly	Month- on change (%)	Year- on change (%)	12- Month average change (%)
Weights**		1000.0					513.10				507.06			
Please note that the above weights are only expenditure weights which are still adjusted by population across 37 states. They should not be taken as the final weights in the computation of the CPI														
2009	Jan	90.2	86.0	0.5	14.0	12.0	91.1	-0.1	8.0	5.5	89.5	0.9	18.4	16.5
	Feb	90.8	87.0	0.7	14.6	12.6	91.7	0.6	7.2	5.6	90.2	0.8	20.0	17.5
	Mar	91.4	87.9	0.6	14.4	13.1	92.0	0.3	11.8	6.5	90.9	0.8	16.2	17.7
	Apr	91.9	88.8	0.6	13.3	13.5	92.5	0.6	10.9	7.3	91.6	0.7	15.3	17.9
	May	93.6	89.8	1.8	13.2	13.8	94.2	1.8	9.9	7.8	93.5	2.0	15.7	17.9
	June	95.3	90.6	1.8	11.2	13.7	95.3	1.2	8.5	8.3	95.6	2.2	13.1	17.5
	July	97.3	91.4	2.1	11.1	13.4	96.8	1.5	8.3	8.6	97.9	2.4	12.9	16.8
	Aug	98.4	92.2	1.1	11.0	13.3	97.3	0.5	8.0	8.9	98.9	1.1	12.7	16.3
	Sep	98.9	93.0	0.5	10.4	13.1	98.1	0.8	7.4	8.9	99.5	0.6	12.5	15.9
	Oct	99.4	93.8	0.5	11.6	12.8	98.9	0.8	8.9	9.0	99.9	0.4	13.5	15.4
	Nov	100.0	94.7	0.7	12.4	12.6	100.0	1.1	10.7	9.1	100.0	0.1	13.5	15.0
	Dec	102.2	95.8	2.2	13.9	12.5	101.5	1.5	11.2	9.2	102.4	2.4	15.5	14.8
2010	Jan	103.1	96.9	1.0	14.4	12.6	102.1	0.6	12.1	9.6	103.7	1.3	15.9	14.7
	Feb	105.0	98.0	1.9	15.6	12.7	104.5	2.3	14.0	10.1	104.8	1.1	16.2	14.4
	Mar	104.9	99.2	-0.1	14.8	12.8	104.1	-0.4	13.2	10.3	105.3	0.4	15.8	14.4
	Apr	105.7	100.3	0.8	15.0	12.9	104.4	0.3	12.8	10.4	106.6	1.2	16.3	14.5
	May	105.7	101.3	-0.04	12.9	12.9	105.2	0.8	11.7	10.6	105.7	-0.8	13.0	14.3

Table 1 Composite Consumer Price Index (Base November 2009 = 100)

		All Items Index (Farm Produce + All Items Less Farm Produce)					All Items less Farm Produce (includes Processed Food)				Food (Farm Produce + Processed Food)			
		Monthly	12- Month Average	Month- on change (%)	Year-on change (%)	12- Month average change (%)	Monthly	Month- on change (%)	Year- on change (%)	12- Month average change (%)	Monthly	Month- on change (%)	Year- on change (%)	12- Month average change (%)
Weights**		1000.0					513.10				507.06			
Please note that the above weights are only expenditure weights which are still adjusted by population across 37 states. They should not be taken as the final weights in the computation of the CPI														
	Jun	108.8	102.4	2.91	14.1	13.1	107.4	2.1	12.7	10.9	110.0	4.1	15.1	14.4
	Jul	109.9	103.5	1.08	13.0	13.3	107.7	0.3	11.3	11.2	111.6	1.5	14.0	14.5
	Aug	111.9	104.6	1.76	13.7	13.5	109.3	1.5	12.4	11.5	113.8	2.0	15.1	14.7
	Sep	112.4	105.7	0.46	13.6	13.8	110.7	1.3	12.8	12.0	114.0	0.1	14.6	14.9
	Oct	112.7	106.9	0.30	13.4	13.9	111.9	1.1	13.2	12.3	114.0	-0.0	14.1	14.9
	Nov	112.8	107.9	0.04	12.8	13.9	111.7	-0.1	11.7	12.4	114.4	0.3	14.4	15.0
	Dec	114.2	108.9	1.29	11.8	13.7	112.6	0.7	10.9	12.4	115.4	0.9	12.7	14.7
2011	Jan	115.6	110.0	1.20	12.1	13.5	114.5	1.7	12.1	12.4	114.3	-0.9	10.3	14.2
	Feb	116.7	110.9	0.96	11.1	13.2	115.5	0.9	10.6	12.1	117.7	2.9	12.2	13.9
	Mar	118.3	112.1	1.37	12.8	13.0	117.5	1.7	12.8	12.1	118.1	0.4	12.2	13.6
	Apr	117.7	113.0	-0.54	11.3	12.7	117.9	0.3	12.9	12.1	119.0	0.7	11.6	13.2
	May	118.7	114.1	0.91	12.4	12.6	118.9	0.9	13.0	12.2	118.5	-0.3	12.2	13.2
	Jun	119.9	115.1	0.97	10.2	12.3	119.8	0.7	11.5	12.1	120.1	1.3	9.2	12.7
	Jul	120.3	115.9	0.32	9.4	12.0	120.1	0.2	11.5	12.1	120.4	0.2	7.9	12.1
	Aug	122.3	116.8	1.67	9.3	11.6	121.2	0.9	10.9	12.0	123.7	2.7	8.7	11.6

Table 1 Composite Consumer Price Index (Base November 2009 = 100)

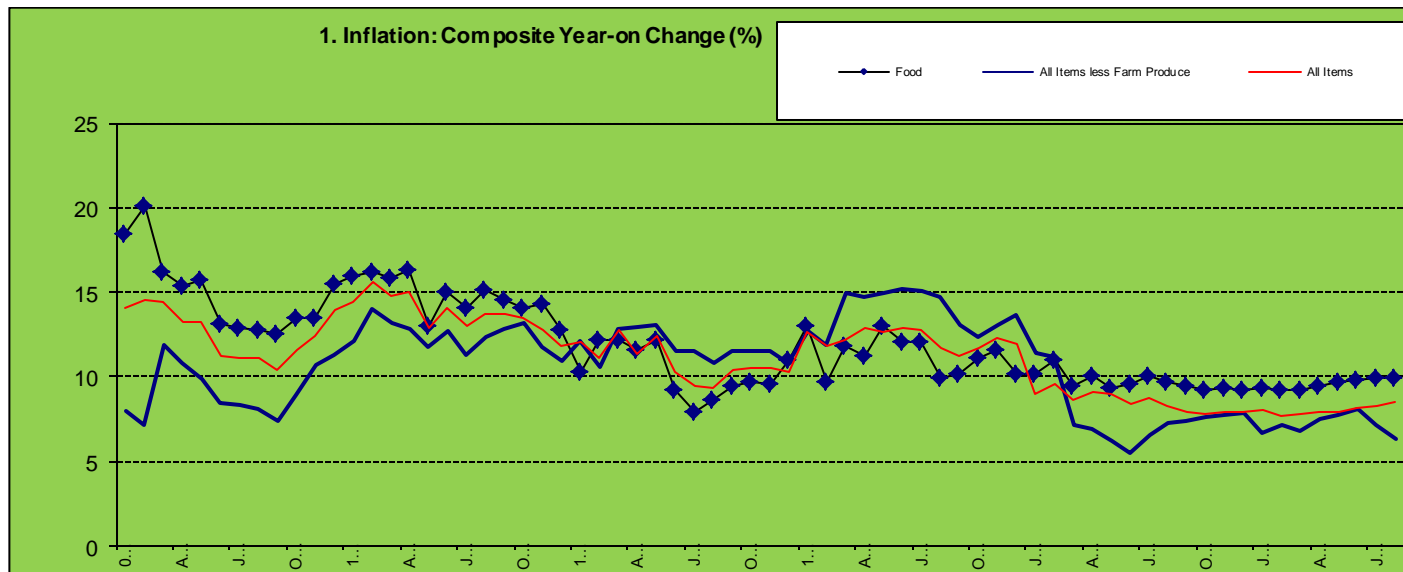
		All Items Index (Farm Produce + All Items Less Farm Produce)					All Items less Farm Produce (includes Processed Food)				Food (Farm Produce + Processed Food)			
		Monthly	12- Month Average	Month- on change (%)	Year-on change (%)	12- Month average change (%)	Monthly	Month- on change (%)	Year- on change (%)	12- Month average change (%)	Monthly	Month- on change (%)	Year- on change (%)	12- Month average change (%)
Weights**		1000.0					513.10				507.06			
Please note that the above weights are only expenditure weights which are still adjusted by population across 37 states. They should not be taken as the final weights in the computation of the CPI														
	Sep	124.0	117.8	1.41	10.3	11.4	123.5	1.9	11.6	11.9	124.8	0.9	9.5	11.2
	Oct	124.6	118.8	0.49	10.5	11.1	124.8	1.1	11.5	11.7	125.0	0.2	9.7	10.8
	Nov	124.7	119.7	0.04	10.5	11.0	124.6	-0.2	11.5	11.7	125.4	0.3	9.6	10.4
	Dec	126.0	120.7	1.06	10.3	10.8	124.8	0.2	10.8	11.7	128.1	2.2	11.0	10.3
2012	Jan	130.2	121.9	3.35	12.6	10.9	129.1	3.5	12.7	11.8	129.3	0.9	13.1	10.5
	Feb	130.5	123.1	0.28	11.9	11.0	129.3	0.1	11.9	11.9	129.1	-0.1	9.7	10.3
	Mar	132.6	124.3	1.59	12.1	10.9	135.1	4.5	15.0	12.1	132.1	2.3	11.8	10.3
	Apr	132.8	125.5	0.13	12.9	11.1	135.2	0.1	14.7	12.2	132.3	0.2	11.2	10.3
	May	133.8	126.8	0.75	12.7	11.1	136.7	1.1	14.9	12.4	133.9	1.2	12.9	10.4
	Jun	135.3	128.1	1.15	12.9	11.3	138.0	1.0	15.2	12.7	134.5	0.5	12.0	10.6
	Jul	135.7	129.4	0.24	12.8	11.6	138.1	0.1	15.0	13.0	135.0	0.3	12.1	11.0
	Aug	136.6	130.6	0.67	11.7	11.8	139.0	0.6	14.7	13.3	135.9	0.7	9.9	11.1
	Sep	138.0	131.7	1.01	11.3	11.9	139.7	0.5	13.1	13.5	137.5	1.1	10.2	11.1
	Oct	139.2	133.0	0.88	11.7	11.9	140.3	0.4	12.4	13.5	138.8	1.0	11.1	11.2
	Nov	140.0	134.2	0.60	12.3	12.1	140.9	0.4	13.1	13.6	139.8	0.7	11.6	11.4

Table 1 Composite Consumer Price Index (Base November 2009 = 100)

		All Items Index (Farm Produce + All Items Less Farm Produce)					All Items less Farm Produce (includes Processed Food)				Food (Farm Produce + Processed Food)			
		Monthly	12- Month Average	Month- on change (%)	Year-on change (%)	12- Month average change (%)	Monthly	Month- on change (%)	Year- on change (%)	12- Month average change (%)	Monthly	Month- on change (%)	Year- on change (%)	12- Month average change (%)
Weights**		1000.0					513.10				507.06			
Please note that the above weights are only expenditure weights which are still adjusted by population across 37 states. They should not be taken as the final weights in the computation of the CPI														
	Dec	141.1	135.5	0.75	12.0	12.2	141.8	0.7	13.7	13.9	141.2	1.0	10.2	11.3
2013	Jan	141.9	136.5	0.62	9.0	11.9	143.8	1.4	11.3	13.7	142.3	0.8	10.1	11.1
	Feb	143.0	137.5	0.75	9.5	11.7	143.8	0.0	11.2	13.7	143.3	0.7	11.0	11.2
	Mar	144.0	138.4	0.71	8.6	11.4	144.8	0.7	7.2	13.0	144.6	1.0	9.5	11.0
	Apr	144.8	139.4	0.55	9.1	11.1	144.5	-0.2	6.9	12.3	145.6	0.6	10.0	10.8
	May	145.8	140.4	0.67	9.0	10.8	145.2	0.5	6.2	11.5	146.4	0.5	9.3	10.5
	Jun	146.6	141.4	0.59	8.4	10.4	145.5	0.3	5.5	10.7	147.5	0.7	9.6	10.4
	Jul	147.4	142.4	0.54	8.7	10.0	147.2	1.2	6.6	10.0	148.4	0.7	10.0	10.2
	Aug	147.8	143.3	0.25	8.2	9.8	149.1	1.3	7.2	9.4	149.2	0.5	9.7	10.2
	Sep	148.9	144.2	0.75	8.0	9.5	150.0	0.6	7.4	8.9	150.4	0.9	9.4	10.1
	Oct	150.0	145.1	0.75	7.8	9.2	150.9	0.6	7.6	8.6	151.6	0.8	9.2	10.0
	Nov	151.1	146.1	0.72	7.9	8.8	151.8	0.6	7.8	8.1	152.9	0.8	9.3	9.8
	Dec	152.3	147.0	0.78	8.0	8.5	153.0	0.8	7.9	7.7	154.3	0.9	9.3	9.7
2014	Jan	153.3	147.9	0.64	8.0	8.4	153.3	0.2	6.6	7.3	155.5	0.8	9.3	9.6
	Feb	154.0	148.8	0.50	7.7	8.3	154.1	0.5	7.2	7.0	156.5	0.6	9.2	9.5
	Mar	155.2	149.8	0.78	7.8	8.2	154.7	0.4	6.8	7.0	158.0	1.0	9.3	9.5

Table 1 Composite Consumer Price Index (Base November 2009 = 100)

		All Items Index (Farm Produce + All Items Less Farm Produce)					All Items less Farm Produce (includes Processed Food)				Food (Farm Produce + Processed Food)			
		Monthly	12- Month Average	Month- on change (%)	Year- on change (%)	12- Month average change (%)	Monthly	Month- on change (%)	Year- on change (%)	12- Month average change (%)	Monthly	Month- on change (%)	Year- on change (%)	12- Month average change (%)
Weights**		1000.0					513.10				507.06			
Please note that the above weights are only expenditure weights which are still adjusted by population across 37 states. They should not be taken as the final weights in the computation of the CPI														
	Apr	156.2	150.7	0.62	7.9	8.1	155.3	0.4	7.5	7.0	159.3	0.8	9.4	9.4
	May	157.4	151.7	0.78	8.0	8.0	156.3	0.6	7.7	7.2	160.6	0.8	9.7	9.4
	Jun	158.6	152.7	0.77	8.2	8.0	157.4	0.7	8.1	7.4	161.9	0.8	9.8	9.5
	Jul	159.7	153.7	0.65	8.3	8.0	157.7	0.2	7.1	7.4	163.1	0.8	9.9	9.5
	Aug	160.4	154.8	0.48	8.5	8.0	158.4	0.4	6.3	7.3	164.0	0.6	10.0	9.5



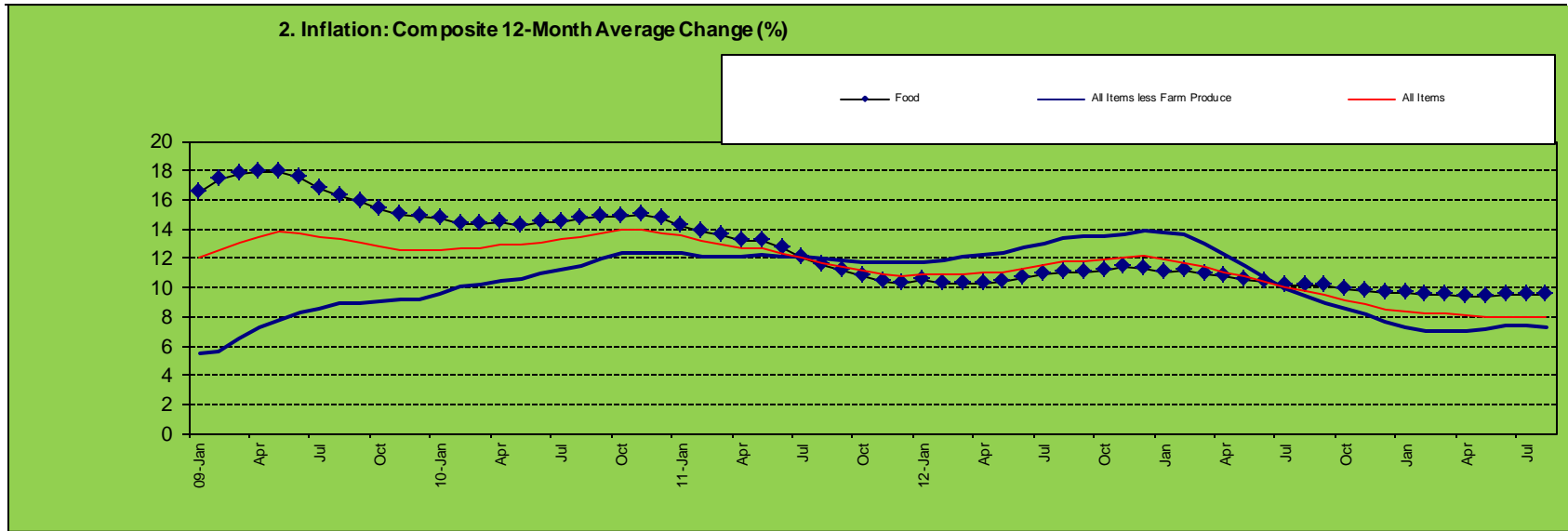


Table 2 Composite Consumer Price Index (Base November 2009 = 100)

		All Items	All Items less Farm Produce.	All Items less Farm Produce. and Energy	Imported Food	Food	Food & Non Alcoholic Bev.	Alcoholic Beverage, Tobacco and Kola	Clothing and Footwear	Housing Water, Electricity, Gas and Other Fuel	Furnishings & Household Equipment Maintenance.	Health.	Transport	Communication	Recreation & Culture.	Education	Restaurant & Hotels	Miscellaneous Goods & Services	Month-on (%)	Year-on (%)	12-month average (%)
Weights**		1000	513.1	428.1	132.5	507.06	518	10.87	76.5	167.3	50.26	30	65.1	6.8	6.91	39.44	12.1	16.6			
Please note that the above weights are only expenditure weights which are still adjusted by population across 37 states. They should not be taken as the final weights in the computation of the CPI																					
2009	Jan	90.2	91.1	92.6		89.5	89.5	97.6	97.0	92.3	87.3	97.1	91.2	97.1	93.7	88.3	99.4	93.9	0.5	14.0	12.0
	Feb	90.8	91.7	92.6		90.2	90.2	98.5	97.0	92.6	87.4	98.6	90.2	97.1	92.8	88.1	100.4	94.1	0.7	14.6	12.6
	Mar	91.4	92.0	93.1		90.9	91.0	98.5	97.1	92.6	87.9	99.0	91.0	97.1	92.7	89.9	100.2	94.9	0.6	14.4	13.1
	Apr	91.9	92.5	94.1		91.6	91.7	99.1	97.5	92.9	89.6	101.1	94.4	97.1	93.4	89.3	101.3	95.4	0.6	13.3	13.5
	May	93.6	94.2	95.4		93.5	93.5	99.5	96.7	94.3	88.8	99.2	96.0	97.1	94.6	92.3	100.2	94.5	1.8	13.2	13.8
	June	95.3	95.3	96.6		95.6	95.6	99.7	97.1	96.3	89.6	100.1	94.0	97.1	95.0	92.6	101.1	97.8	1.8	11.2	13.7
	July	97.3	96.8	98.4		97.9	97.8	101.4	97.9	98.3	99.3	101.7	92.5	99.4	96.8	93.9	98.9	98.8	2.1	11.1	13.4
	Aug	98.4	97.3	97.7		98.9	98.9	100.2	99.1	98.4	100.2	101.8	93.1	101.5	98.1	99.4	101.2	100.0	1.1	11.0	13.3
	Sep	98.9	98.1	98.5		99.5	99.5	99.3	99.1	98.7	98.7	101.6	94.9	101.2	97.6	99.6	99.9	100.1	0.5	10.4	13.1
	Oct	99.4	98.9	99.1		99.9	99.9	99.7	99.6	99.5	99.1	102.3	96.0	100.4	97.5	97.7	99.0	99.7	0.5	11.6	12.8
	Nov	100.0	100.0	100.0	100.0	100.0	100.0	100.0	100.0	100.0	100.0	100.0	100.0	100.0	100.0	100.0	100.0	100.0	0.7	12.4	12.6
	Dec	102.2	101.5	101.9	101.5	102.4	102.7	101.9	101.5	100.2	101.7	101.8	101.8	100.0	101.9	101.5	102.6	101.7	2.2	13.9	12.5
2010	Jan	103.1	102.1	102.6	101.7	103.7	103.9	102.3	102.4	100.6	103.0	103.0	103.0	99.6	103.0	103.1	106.7	103.3	1.0	14.4	12.6
	Feb	105.0	104.5	105.0	103.2	104.8	105.4	102.6	103.4	102.3	104.7	104.9	104.7	100.3	99.4	106.0	106.3	105.9	1.9	15.6	12.7
	Mar	104.9	104.1	104.6	103.0	105.3	105.3	104.3	104.5	102.2	105.7	105.3	104.8	100.6	103.3	105.5	105.6	104.4	-0.1	14.8	12.8
	Apr	105.7	104.4	105.1	103.9	106.6	106.7	104.8	105.1	102.2	103.8	104.9	106.8	100.4	103.1	105.6	109.7	106.2	0.8	15.0	12.9
	May	105.7	105.2	106.5	104.9	105.7	106.2	103.8	105.9	102.1	102.6	104.8	106.3	100.2	103.3	108.6	110.1	107.2	-0.04	12.9	12.9
	Jun	108.8	107.4	108.6	109.6	110.0	110.2	108.5	109.1	104.8	110.7	108.5	107.4	102.1	102.6	106.6	106.9	109.6	2.91	14.1	13.1
	Jul	109.9	107.7	108.8	109.3	111.6	112.0	109.6	110.3	105.1	109.0	110.3	107.5	102.6	103.0	105.7	105.0	110.7	1.08	13.0	13.3
	Aug	111.9	109.3	110.4	109.3	113.8	114.1	112.3	112.8	106.2	110.3	112.3	108.6	100.6	105.0	106.0	107.3	111.2	1.76	13.7	13.5
	Sep	112.4	110.7	111.7	113.6	114.0	113.5	109.0	112.4	109.9	112.1	112.0	112.2	101.8	108.4	108.4	107.1	111.7	0.46	13.6	13.8

Table 2 Composite Consumer Price Index (Base November 2009 = 100)

	All Items	All Items less Farm Produce.	All Items less Farm Produce. and Energy	Imported Food	Food	Food & Non Alcoholic Bev.	Alcoholic Beverage, Tobacco and Kola	Clothing and Footwear	Housing Water, Electricity, Gas and Other Fuel	Furnishings & Household Equipment Maintenance.	Health.	Transport	Communication	Recreation & Culture.	Education	Restaurant & Hotels	Miscellaneous Goods & Services	Month-on (%)	Year-on (%)	12-month average (%)	
Weights**	1000	513.1	428.1	132.5	507.06	518	10.87	76.5	167.3	50.26	30	65.1	6.8	6.91	39.44	12.1	16.6				
Please note that the above weights are only expenditure weights which are still adjusted by population across 37 states. They should not be taken as the final weights in the computation of the CPI																					
	Oct	112.7	111.9	112.0	114.1	114.0	114.1	111.7	112.8	111.0	113.2	114.8	107.1	102.9	109.6	110.1	108.5	110.6	0.30	13.4	13.9
	Nov	112.8	111.7	111.3	115.1	114.4	114.3	112.2	112.0	112.6	113.1	111.1	111.7	102.0	107.8	107.7	108.2	112.8	0.04	12.8	13.9
	Dec	114.2	112.6	112.5	115.4	115.4	115.5	111.9	113.7	113.2	113.2	112.7	112.9	102.4	107.8	109.1	109.6	112.1	1.29	11.8	13.7
2011	Jan	115.6	114.5	113.0	96.0	114.3	118.7	110.6	114.4	113.9	113.5	111.3	109.2	103.6	108.3	110.2	110.5	113.2	1.2	12.1	13.5
	Feb	116.7	115.5	115.5	124.0	117.7	117.9	113.4	116.0	114.7	115.6	114.7	117.2	104.9	106.3	110.6	112.3	114.2	0.96	11.1	13.2
	Mar	118.3	117.5	117.5	119.4	118.1	118.2	112.7	116.5	116.0	115.9	117.5	115.5	105.1	107.4	111.0	112.2	112.8	1.37	12.8	13.0
	Apr	117.7	117.9	117.9	119.1	119.0	118.0	114.5	116.2	121.0	115.4	117.2	114.8	105.1	107.1	111.4	113.3	114.7	-0.54	11.3	12.7
	May	118.7	118.9	119.0	120.6	118.5	118.5	115.1	118.2	121.2	116.6	116.6	115.7	105.7	107.4	111.9	113.8	115.6	0.91	12.4	12.6
	Jun	119.9	119.8	119.8	111.9	120.1	119.5	114.2	118.0	121.6	116.3	119.9	118.5	105.6	107.9	112.2	114.3	117.9	0.97	10.2	12.3
	Jul	120.3	120.1	119.9	112.6	120.4	120.2	112.4	117.7	122.5	117.6	118.3	120.7	106.2	111.1	112.6	115.0	119.8	0.32	9.4	12.0
	Aug	122.3	121.2	121.1	116.0	123.7	123.4	116.4	118.7	124.5	120.0	120.4	121.9	106.4	109.5	112.9	115.1	121.5	1.67	9.3	11.6
	Sep	124.0	123.5	122.7	117.6	124.8	124.2	116.2	119.9	126.1	119.2	122.3	122.3	106.2	109.8	113.8	115.7	121.6	1.41	10.3	11.4
	Oct	124.6	124.8	124.0	117.0	125.0	124.3	117.6	120.6	128.5	119.5	121.8	122.2	106.6	117.0	114.0	116.6	122.0	0.49	10.5	11.1
	Nov	124.7	124.6	123.5	124.2	125.4	125.1	118.9	121.9	128.1	120.2	122.7	123.3	107.1	115.7	114.2	116.9	125.5	0.04	10.5	11.0
	Dec	126.0	124.8	123.6	125.3	128.1	127.8	119.0	122.3	131.9	119.9	122.8	128.7	106.5	113.3	114.6	118.9	122.7	1.06	10.3	10.8
2012	Jan	130.2	129.1	129.2	121.6	129.3	130.8	123.2	121.1	131.8	120.6	122.7	127.8	108.7	114.5	115.0	120.0	125.9	3.35	12.6	10.9
	Feb	130.5	129.3	129.4	121.6	129.1	129.1	123.2	121.1	131.8	120.6	122.7	127.9	108.7	114.5	115.1	120.0	125.9	0.28	11.9	11.0
	Mar	132.6	135.1	134.5	129.9	132.1	131.9	120.6	133.7	139.7	130.2	129.7	134.4	113.4	116.7	125.6	121.4	131.6	1.59	12.1	10.9
	Apr	132.8	135.2	134.7	131.3	132.3	132.1	121.3	134.1	139.5	130.7	130.1	134.6	114.0	117.6	125.0	121.9	132.0	0.13	12.9	11.1
	May	133.8	136.7	136.3	132.5	133.9	133.7	122.0	134.7	139.7	131.1	130.8	135.1	114.4	118.4	125.5	122.6	132.6	0.75	12.7	11.1
	Jun	135.3	138.0	136.2	132.6	134.5	134.3	122.5	134.8	146.5	131.3	131.1	135.5	114.8	118.5	125.7	123.1	132.9	1.15	12.9	11.3
	Jul	135.7	138.1	136.5	132.9	135.0	134.7	122.8	134.9	146.7	131.3	131.3	135.8	114.9	118.9	125.9	123.4	133.1	0.24	12.8	11.6

Table 2 Composite Consumer Price Index (Base November 2009 = 100)

	All Items	All Items less Farm Produce.	All Items less Farm Produce. and Energy	Imported Food	Food	Food & Non Alcoholic Bev.	Alcoholic Beverage. Tobacco and Kola	Clothing and Footwear	Housing Water, Electricity, Gas and Other Fuel	Furnishings & Household Equipment Maintenance.	Health.	Transport	Communication	Recreation & Culture.	Education	Restaurant & Hotels	Miscellaneous Goods & Services	Month-on (%)	Year-on (%)	12-month average (%)	
Weights**	1000	513.1	428.1	132.5	507.06	518	10.87	76.5	167.3	50.26	30	65.1	6.8	6.91	39.44	12.1	16.6				
Please note that the above weights are only expenditure weights which are still adjusted by population across 37 states. They should not be taken as the final weights in the computation of the CPI																					
	Aug	136.6	139.0	137.1	134.2*	135.9	135.7	123.3	135.6	147.8	132.0	132.0*	136.6	115.2	119.4	126.4	124.4	133.7	0.67	11.7	11.8
	Sep	138.0	139.7	137.7	134.2	137.5	137.2	123.8	136.5	150.1	132.9	132.4	137.3	115.6	120.6	126.7	125.0	134.4	1.01	11.3	11.9
	Oct	139.2	140.3	138.1	135.3	138.8	136.6	124.5	137.5	151.5	133.5	133.1	138.5	116.6	121.4	128.1	125.4	135.3	0.88	11.7	11.9
	Nov	140.0	140.9	138.7	136.2	139.8	139.6	125.3	138.2	152.3	134.1	133.5	138.9	116.2	121.8	128.8	125.7	135.6	0.60	12.3	12.1
	Dec	141.1	141.8	139.6	137.6	141.2	140.9	126.1	139.1	153.2	134.4	133.9	140.2	116.3	122.1	129.1	126.1	136.0	0.75	12.0	12.2
2013	Jan	141.9	143.8	140.3	138.7	142.3	142.0	127.1	140.1	153.8	135.4	134.3	140.6	116.4	122.2	129.3	126.4	136.3	0.62	9.0	11.9
	Feb	143.0	143.8	140.5	139.1	143.3	143.0	128.1	141.3	155.2	136.4	135.5	141.9	116.9	123.3	130.2	127.5	137.4	0.75	9.5	11.7
	Mar	144.0	144.8	142.9	139.3	144.6	144.3	128.7	141.8	155.9	136.9	136.4	142.4	117.3	123.7	131.2	127.7	138.8	0.71	8.6	11.4
	Apr	144.8	144.5	142.3	139.9	145.6	145.3	129.4	142.8	156.3	137.6	137.3	143.2	117.4	124.5	131.7	128.1	139.7	0.55	9.1	11.1
	May	145.8	145.2	141.9	140.1	146.4	146.1	130.1	144.0	157.2	139.3	138.6	144.5	117.9	125.8	133.2	129.1	140.6	0.67	9.0	10.8
	Jun	146.6	145.5	142.2	141.4	147.5	147.1	130.7	144.6	158.0	139.9	139.4	145.0	118.1	126.3	133.3	129.7	141.1	0.59	8.4	10.4
	Jul	147.4	147.2	145.1	142.4	148.4	148.1	131.3	145.2	158.8	140.4	140.0	145.5	118.5	126.6	133.5	130.3	141.5	0.54	8.7	10.0
	Aug	147.8	149.1	146.3	143.2	149.2	148.8	131.6	145.3	158.5	140.5	140.0	145.6	118.6	126.7	133.8	130.5	141.6	0.25	8.2	9.8
	Sep	148.9	150.0	147.8	144.3	150.4	150.1	132.4	146.3	159.4	141.3	140.9	146.7	119.1	127.5	134.9	131.5	142.6	0.75	8.0	9.5
	Oct	150.0	150.9	148.6	145.5	151.6	151.3	133.4	147.5	160.3	142.3	142.0	147.8	120.0	128.5	136.0	132.6	143.8	0.75	7.8	9.2
	Nov	151.1	151.8	149.5	146.3	152.9	152.5	134.2	148.7	161.3	143.2	142.7	148.6	120.4	129.3	137.0	133.6	144.9	0.72	7.9	8.8
	Dec	152.3	153.0	150.8	147.4	154.3	153.9	134.7	149.8	162.2	144.1	143.5	149.6	120.9	130.1	137.9	134.4	145.9	0.78	8.0	8.5
2014	Jan	153.3	153.3	150.7	148.4	155.5	155.2	135.5	150.7	162.7	145.0	144.3	150.4	121.3	131.0	138.3	134.9	146.5	0.64	8.0	8.4
	Feb	154.0	154.1	151.8	149.1	156.5	156.1	136.0	151.4	163.3	145.5	145.0	151.0	121.6	132.0	138.7	135.3	146.9	0.50	7.7	8.3
	Mar	155.2	154.7	152.5	150.3	158.0	157.6	136.7	151.9	164.2	146.5	145.9	152.0	122.1	132.8	139.4	136.1	147.7	0.78	7.8	8.2
	Apr	156.2	155.3	153.1	151.1	159.3	158.9	137.5	152.7	164.9	147.0	146.3	152.6	122.6	133.5	139.9	136.9	148.4	0.62	7.9	8.1
	May	157.4	156.3	154.0	152.4	160.6	160.2	138.3	154.1	166.0	148.2	147.4	153.8	123.1	134.5	140.9	138.1	149.6	0.78	8.0	8.0

Table 2 Composite Consumer Price Index (Base November 2009 = 100)

	All Items	All Items less Farm Produce.	All Items less Farm Produce. and Energy	Imported Food	Food	Food & Non Alcoholic Bev.	Alcoholic Beverage, Tobacco and Kola	Clothing and Footwear	Housing Water, Electricity, Gas and Other Fuel	Furnishings & Household Equipment Maintenance.	Health.	Transport	Communication	Recreation & Culture.	Education	Restaurant & Hotels	Miscellaneous Goods & Services	Month-on (%)	Year-on (%)	12-month average (%)	
Weights**	1000	513.1	428.1	132.5	507.06	518	10.87	76.5	167.3	50.26	30	65.1	6.8	6.91	39.44	12.1	16.6				
Please note that the above weights are only expenditure weights which are still adjusted by population across 37 states. They should not be taken as the final weights in the computation of the CPI																					
	Jun	158.6	157.4	155.0	153.4	161.9	161.5	139.3	155.3	167.3	149.3	148.4	154.8	123.7	135.3	141.3	139.2	150.7	0.77	8.2	8.0
	Jul	159.7	157.7	155.4	154.0	163.1	162.7	140.2	156.2	168.3	150.3	149.1	155.4	124.1	136.5	141.8	139.9	151.3	0.65	8.3	8.0
	Aug	160.4	158.4	156.0	154.9	164.0	163.6	141.0	156.8	168.7	151.1	149.9	156.3	124.2	137.4	142.6	140.5	152.0	0.5	8.5	8.0

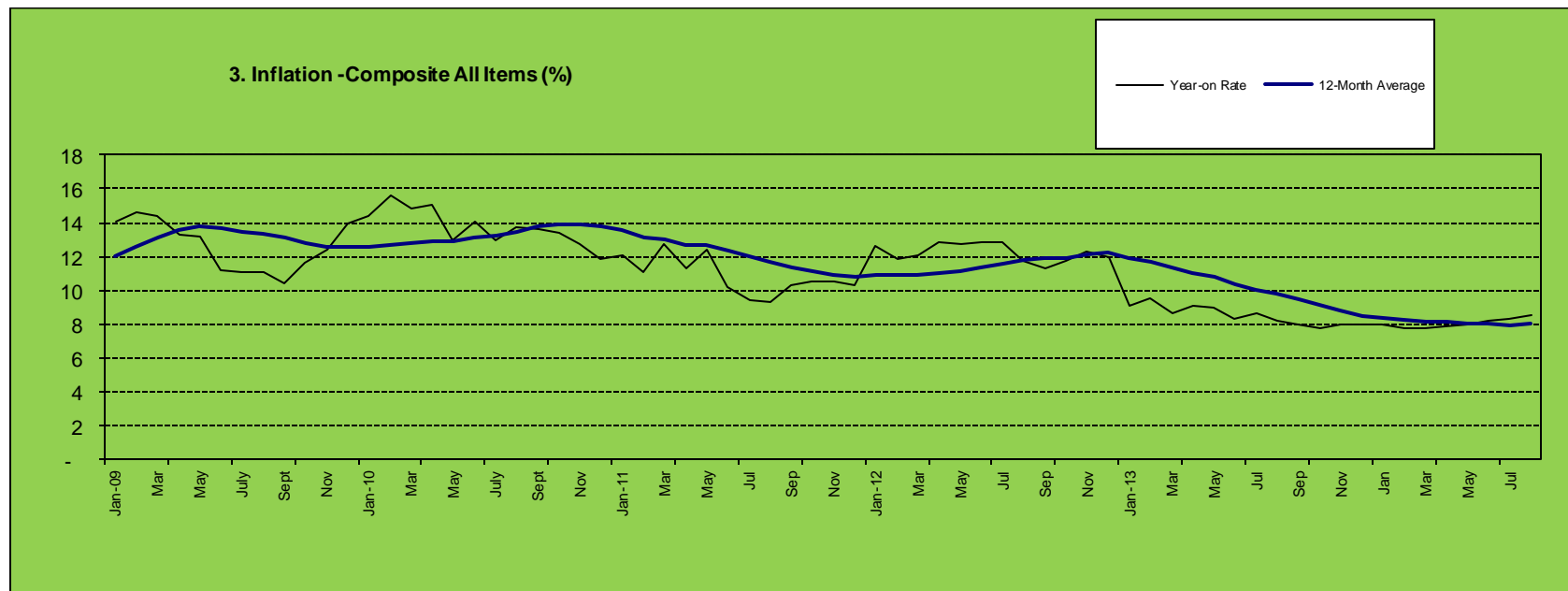


Table 3 Urban Consumer Price Index (Base November 2009 = 100)

		All Items	All Items less Farm Produce.	All Items less Farm Produce. and Energy	Imported Food	Food	Food & Non Alcoholic Bev.	Alcoholic Beverage. Tobacco and Kola	Clothing and Footwear	Housing Water, Electricity. Gas and Other Fuel	Furnishings & Household Equipment Maintenance.	Health.	Transport	Communication	Recreation & Culture.	Education	Restaurant & Hotels	Miscellaneous Goods & Services	Month-on (%)	Year-on (%)	12-month average (%)
Weights		1000	575.22	440.93	155.13	476.82	490.59	11.19	65.5	191.51	49.74	27.4	74.54	10.14	7.2	40.05	14.49	17.65			
Please note that the above weights are only expenditure weights which are still adjusted by population across 37 states. They should not be taken as the final weights in the computation of the CPI																					
2009	Jan	92.8	96.6	97.8		90.5	90.5	97.6	97.8	96.4	96.3	96.3	94.0	99.3	97.8	92.3	102.0	96.0	0.0	10.4	11.8
	Feb	93.6	96.3	97.6		92.0	92.0	98.6	98.2	95.5	96.2	98.1	93.0	99.3	97.8	90.9	103.2	95.2	0.8	9.8	11.6
	Mar	93.9	96.5	98.0		92.4	92.4	98.8	97.9	95.5	96.5	98.3	94.1	99.3	96.7	93.0	104.1	95.1	0.4	9.9	11.5
	Apr	94.3	97.4	98.8		92.5	92.6	99.9	98.6	96.4	98.0	99.6	95.7	99.3	97.8	89.7	104.4	95.6	0.5	8.6	11.3
	May	95.7	98.2	98.7		94.1	94.1	100.1	96.9	98.1	96.2	97.9	97.1	99.3	98.9	96.3	104.2	98.2	1.4	9.5	11.2
	June	97.2	98.8	99.7		96.3	96.3	100.6	97.0	98.5	97.4	99.3	96.7	99.3	99.9	96.7	106.2	98.1	1.6	9.2	11.0
	July	98.9	99.5	100.3		98.4	98.4	102.1	99.9	100.2	98.8	100.9	95.7	100.8	100.1	97.6	100.1	98.5	1.7	9.3	10.7
	Aug	99.6	99.7	99.4		99.3	99.3	100.7	99.9	100.6	99.7	100.3	95.1	102.1	101.2	97.4	105.2	99.9	0.7	8.4	10.4
	Sep	99.8	99.5	99.2		99.8	99.8	99.8	99.7	100.3	101.1	98.8	96.0	101.5	100.5	99.5	99.7	100.8	0.2	8.1	10.0
	Oct	99.8	99.9	99.3		99.6	99.6	99.8	100.3	100.8	100.9	99.9	96.8	100.9	100.1	98.9	98.0	100.7	0.0	8.3	9.5
	Nov	100.0	100.0	100.0	100.0	100.0	100.0	100.0	100.0	100.0	100.0	100.0	100.0	100.0	100.0	100.0	100.0	100.0	0.2	8.8	9.3
	Dec	101.4	101.3	101.8	100.5	101.6	101.7	99.9	100.9	101.4	100.8	101.6	102.0	99.2	104.2	100.7	103.2	101.6	1.4	9.3	9.1
2010	Jan	102.6	102.5	102.7	101.1	102.8	102.8	100.7	103.1	102.6	101.9	102.4	103.5	99.7	105.8	102.5	108.3	102.8	1.2	10.5	9.1
	Feb	104.4	105.4	105.4	103.1	102.9	103.6	101.6	103.6	104.4	103.6	105.4	103.9	100.1	99.4	108.0	106.7	106.3	1.8	11.6	9.3
	Mar	106.0	105.7	105.9	103.5	106.1	105.9	103.8	105.9	104.8	106.1	106.8	108.1	100.9	107.1	106.8	107.5	106.1	1.5	12.9	9.6
	Apr	105.9	105.4	105.6	103.4	106.3	106.1	103.9	106.0	103.9	105.5	106.9	106.7	100.8	108.3	106.6	111.5	107.0	-0.1	12.2	9.9
	May	103.8	103.7	104.9	104.5	103.8	104.7	102.0	104.7	99.2	103.0	104.1	105.9	101.2	105.0	105.7	109.3	104.8	-1.9	8.5	9.8
	Jun	107.7	107.0	108.0	110.0	108.5	108.6	106.8	108.7	105.2	108.7	107.9	106.2	103.4	104.0	106.8	108.6	109.3	3.7	10.8	9.9
	Jul	109.1	107.9	108.4	109.1	110.4	110.6	109.2	110.4	103.9	108.4	111.6	109.3	104.0	102.8	106.7	106.4	110.6	1.3	10.3	10.0
	Aug	110.5	109.0	109.9	111.0	112.8	112.9	110.0	112.1	103.0	110.7	113.0	110.0	100.9	106.4	108.1	111.6	111.7	1.3	10.9	10.2
	Sep	110.6	109.4	110.5	113.0	112.6	112.4	106.6	112.4	106.0	110.5	110.0	112.2	101.4	110.1	107.6	107.3	109.2	0.1	10.9	10.4
	Oct	111.2	110.0	110.1	114.3	113.5	113.5	109.6	111.6	110.7	109.4	110.8	105.8	101.4	109.0	108.4	106.0	110.8	0.5	11.5	10.7
	Nov	111.7	111.3	111.1	113.4	112.8	112.8	110.0	112.2	111.0	111.1	111.8	110.4	101.1	109.7	107.9	107.8	113.1	0.5	11.7	10.9
	Dec	112.2	111.2	111.0	113.5	113.4	113.4	109.7	113.8	111.8	111.5	112.9	111.7	100.8	109.2	109.3	111.3	112.7	0.4	10.7	11.0
2011	Jan	110.7	108.5	106.0	67.2	111.7	116.5	107.8	114.9	110.8	112.4	111.6	108.3	105.8	108.1	111.2	113.2	111.6	-1.4	7.9	10.8

Table 3 Urban Consumer Price Index (Base November 2009 = 100)

	All Items	All Items less Farm Produce.	All Items less Farm Produce. and Energy	Imported Food	Food	Food & Non Alcoholic Bev.	Alcoholic Beverage. Tobacco and Kola	Clothing and Footwear	Housing Water, Electricity. Gas and Other Fuel	Furnishings & Household Equipment Maintenance.	Health.	Transport	Communication	Recreation & Culture.	Education	Restaurant & Hotels	Miscellaneous Goods & Services	Month-on (%)	Year-on (%)	12-month average (%)	
Weights	1000	575.22	440.93	155.13	476.82	490.59	11.19	65.5	191.51	49.74	27.4	74.54	10.14	7.2	40.05	14.49	17.65				
Please note that the above weights are only expenditure weights which are still adjusted by population across 37 states. They should not be taken as the final weights in the computation of the CPI																					
	Feb	114.2	114.1	114.4	117.6	115.5	115.2	110.2	115.1	115.5	114.4	118.6	111.6	101.9	103.7	111.7	114.9	114.6	3.2	9.4	10.6
	Mar	115.0	114.9	114.2	118.0	116.0	116.3	109.8	115.7	118.2	115.1	120.5	111.9	101.8	105.1	111.6	115.9	113.8	0.7	8.5	10.3
	Apr	115.5	116.3	116.1	114.9	116.4	115.5	112.3	116.3	116.1	114.8	117.8	112.2	102.5	106.1	111.6	115.1	115.5	0.5	9.1	10.0
	May	115.8	116.8	116.7	116.0	116.7	116.2	112.9	117.2	116.0	116.4	120.1	116.2	102.8	105.6	111.7	115.9	114.7	0.2	11.5	10.2
	Jun	116.6	116.6	116.3	112.4	118.0	117.2	112.1	117.2	116.3	115.4	121.1	116.5	102.0	106.5	111.7	116.8	114.7	0.7	8.3	10.0
	Jul	116.3	116.8	115.6	111.8	118.0	117.6	112.2	117.4	118.3	116.7	118.8	119.0	103.4	104.9	112.5	117.3	115.8	-0.3	6.6	9.7
	Aug	118.3	118.7	117.8	113.4	119.9	119.1	113.8	117.9	119.9	119.7	121.1	122.1	103.4	107.9	112.6	116.1	116.9	1.7	7.1	9.4
	Sep	120.0	121.3	119.6	115.5	120.7	119.8	114.1	118.4	124.8	120.2	123.6	121.3	103.7	108.2	113.2	117.7	117.2	1.4	8.4	9.2
	Oct	119.9	121.2	119.1	115.5	120.9	120.0	114.6	119.1	125.6	120.3	121.7	121.3	104.3	111.1	113.2	118.8	116.7	-0.1	7.8	8.9
	Nov	120.0	121.1	118.9	119.0	120.8	119.7	115.5	120.9	125.1	119.7	123.3	122.8	105.0	108.6	113.7	119.0	120.5	0.1	7.4	8.5
	Dec	122.3	122.0	119.6	121.1	124.5	123.8	115.2	120.2	128.0	119.2	122.1	128.2	104.6	107.9	114.6	121.1	117.4	2.0	9.0	8.4
2012	Jan	128.9	128.2	127.4	113.4	125.5	127.1	119.3	119.7	135.4	120.6	123.3	127.4	105.9	108.9	114.9	123.4	119.9	5.3	16.4	9.1
	Feb	129.2	128.4	127.5	113.5	126.3	126.2	119.3	119.7	135.5	120.6	123.3	127.5	105.9	108.9	114.9	123.4	119.9	0.3	13.1	9.4
	Mar	130.7	132.6	132.1	129.5	129.1	128.9	113.2	135.2	136.9	127.4	129.0	137.6	110.6	115.1	124.2	122.9	131.4	1.2	13.7	9.9
	Apr	131.1	133.0	132.6	130.7	129.4	129.2	114.6	136.3	136.9	128.1	129.4	137.6	111.1	116.4	124.4	123.1	132.3	0.3	13.4	10.3
	May	132.1	134.0	133.6	132.1	131.1	130.9	115.5	136.8	137.2	128.4	130.1	138.2	111.7	117.8	125.3	123.5	133.0	0.8	14.1	10.5
	Jun	134.1	135.8	134.0	132.1	131.4	131.3	116.1	137.0	146.5	128.3	130.4	138.3	112.1	117.6	125.5	123.7	133.4	1.5	15.0	11.1
	Jul	134.5	135.5	133.6	132.4	131.7	131.6	116.4	137.0	146.9	128.5	130.8	138.7	112.2	118.4	125.9	124.2	133.6	0.2	15.6	11.8
	Aug	135.4	136.7	134.3	133.8*	132.5	132.4*	117.0	137.9	148.3	129.5	131.5	139.6	112.6	119.3	126.1	126.0	134.8	0.7	14.5*	12.4
	Sep	137.0	137.7	135.4	133.9	134.2	134.0	117.3	138.9	151.1	130.3	132.3	140.4	113.3	121.0	126.6	126.2	136.1	1.2	14.2	12.9
	Oct	138.2	138.3	135.6	134.5	135.3	135.1	117.6	139.7	152.9	131.2	133.0	141.5	113.6	121.9	127.9	126.8	136.9	0.9	15.3	13.5
	Nov	139.0	138.9	136.1	134.5	136.2	136.0	118.1	140.1	154.2	131.8	133.3	142.1	113.7	122.8	128.6	127.2	137.0	0.6	15.8	14.2
	Dec	140.0	139.8	136.9	136.7	137.6	137.3	118.8	141.2	155.1	132.1	133.6	143.1	113.8	122.8	129.0	127.3	137.2	0.8	14.5	14.6

Table 3 Urban Consumer Price Index (Base November 2009 = 100)

		All Items	All Items less Farm Produce.	All Items less Farm Produce. and Energy	Imported Food	Food	Food & Non Alcoholic Bev.	Alcoholic Beverage. Tobacco and Kola	Clothing and Footwear	Housing Water, Electricity. Gas and Other Fuel	Furnishings & Household Equipment Maintenance.	Health.	Transport	Communication	Recreation & Culture.	Education	Restaurant & Hotels	Miscellaneous Goods & Services	Month-on (%)	Year-on (%)	12-month average (%)
Weights		1000	575.22	440.93	155.13	476.82	490.59	11.19	65.5	191.51	49.74	27.4	74.54	10.14	7.2	40.05	14.49	17.65			
Please note that the above weights are only expenditure weights which are still adjusted by population across 37 states. They should not be taken as the final weights in the computation of the CPI																					
2013	Jan	140.8	142.3	137.9	137.8	138.6	138.4	120.0	141.8	155.4	132.4	134.0	143.6	113.9	122.9	129.4	127.5	137.6	0.5	9.2	14.0
	Feb	142.0	142.3	137.9	137.9	139.9	139.6	121.0	143.0	156.7	133.3	135.3	144.9	114.3	124.1	130.5	128.6	138.9	0.9	9.8	13.7
	Mar	142.8	142.0	139.3	138.5	140.7	140.5	121.7	144.0	157.5	134.2	136.3	145.9	114.9	124.8	131.5	129.1	140.0	0.6	9.3	13.3
	Apr	143.7	142.6	140.1	138.6	142.0	141.7	122.5	144.7	158.3	134.6	136.7	146.3	115.0	125.4	131.6	129.3	140.3	0.6	9.7	13.0
	May	144.5	142.7	138.7	139.0	142.7	142.5	122.9	145.8	158.8	135.6	137.8	147.3	115.5	126.3	132.8	130.4	141.6	0.6	9.4	12.6
	Jun	145.5	143.1	139.1	140.4	143.9	143.6	123.6	146.5	159.9	135.9	138.6	148.1	115.7	126.6	133.0	131.3	142.1	0.7	8.4	12.0
	Jul	146.3	145.4	142.9	141.5	145.0	144.7	123.9	147.2	160.8	136.5	139.2	148.9	116.1	127.2	133.2	131.7	142.4	0.6	8.8	11.4
	Aug	146.8	147.7	144.1	142.6	145.8	145.5	124.1	147.2	160.8	136.7	139.3	149.1	116.2	127.2	133.3	132.1	142.7	0.3	8.4	10.9
	Sep	147.9	147.7	145.3	143.7	147.1	146.8	125.3	148.5	161.7	137.6	140.2	150.2	116.8	128.4	134.5	133.2	143.7	0.8	8.0	10.4
	Oct	149.1	148.6	146.0	145.0	148.3	148.0	126.2	149.8	162.6	138.5	141.4	151.4	117.7	129.5	135.6	134.4	145.0	0.8	7.9	9.8
	Nov	150.2	149.4	146.7	145.8	149.6	149.3	127.0	151.0	163.8	139.0	142.0	152.4	118.1	130.3	136.7	135.4	145.9	0.8	8.1	9.2
	Dec	151.4	150.4	147.7	146.7	151.0	150.6	127.6	152.2	164.9	139.8	142.7	153.4	118.7	131.1	137.7	135.9	146.8	0.8	8.1	8.8
2014	Jan	152.2	150.7	147.6	147.7	152.3	151.9	128.4	153.0	165.2	140.7	143.4	153.6	118.7	131.7	137.8	136.1	147.1	0.6	8.2	8.7
	Feb	153.0	151.6	148.9	148.6	153.2	152.8	128.9	153.6	165.8	141.1	144.4	154.4	119.2	132.4	138.4	136.5	147.5	0.5	7.8	8.5
	Mar	154.2	152.1	149.7	149.8	154.7	154.4	129.6	154.1	166.7	142.1	145.2	155.3	119.9	133.6	139.2	137.4	148.3	0.8	7.9	8.4
	Apr	155.1	152.6	150.0	150.7	156.1	155.7	130.5	154.7	167.4	142.7	145.5	155.7	120.2	134.5	139.8	138.4	149.5	0.6	7.9	8.2
	May	156.4	153.6	150.8	151.8	157.4	157.0	131.1	156.1	168.5	143.8	146.5	156.9	120.7	135.4	140.7	139.6	150.7	0.8	8.2	8.2
	Jun	157.6	154.6	151.8	152.8	158.8	158.3	132.3	157.5	169.8	144.9	147.8	158.0	121.3	136.2	141.3	140.8	151.8	0.8	8.4	8.1
	Jul	158.7	155.3	152.3	153.5	160.1	159.7	133.2	158.3	170.7	146.4	148.5	158.9	121.9	138.2	141.9	141.5	152.5	0.70	8.5	8.1
	Aug	159.5	156.1	153.1	154.6	161.1	160.6	133.9	158.8	171.1	147.2	149.3	159.9	122.0	139.4	142.8	142.2	153.1	0.51	8.7	8.1

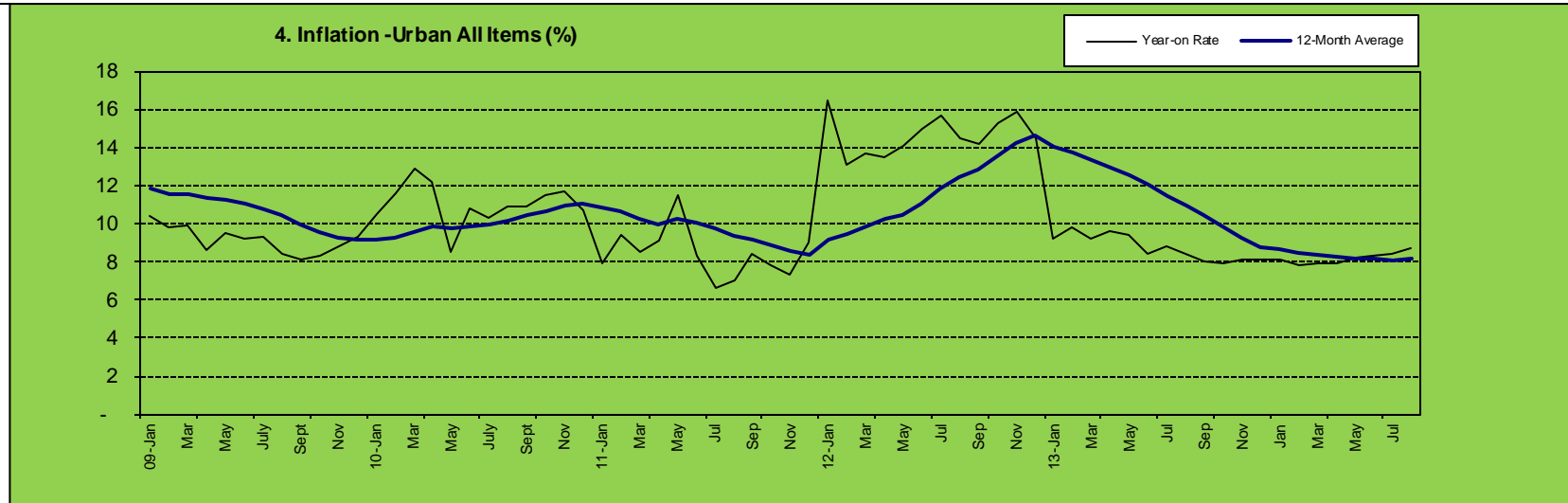


Table 4 Rural Consumer Price Index (Base November 2009 = 100)

		All Items	All Items less Farm Produce.	All Items less Farm Produce. and Energy	Imported Food	Food	Food & Non Alcoholic Bev.	Alcoholic Beverage. Tobacco and Kola	Clothing and Footwear	Housing Water, Electricity. Gas and Other Fuel	Furnishings & Household Equipment Maintenance.	Health.	Transport	Communication	Recreation & Culture.	Education	Restaurant & Hotels	Miscellaneous Goods & Services	Month-on (%)	Year-on (%)	12-month average (%)
Weights		1000.0	503.1	417.4	113.7	532.3	540.9	10.6	85.7	147.2	50.7	32.2	57.2	4.0	6.7	38.9	10.1	15.8			
2009	Jan	88.9	88.5	90.0		89.1	89.1	97.5	96.2	87.1	81.7	97.9	86.6	95.2	91.2	84.5	97.8	92.1	0.8	15.9	12.1
	Feb	89.5	89.5	90.2		89.6	89.6	98.3	95.7	89.0	81.9	99.0	85.6	95.2	89.7	85.4	98.8	93.1	0.7	17.2	13.1
	Mar	90.2	89.8	90.8		90.5	90.5	98.0	96.1	88.8	82.5	99.6	85.7	95.2	90.2	87.0	97.9	94.7	0.7	16.7	13.9
	Apr	90.7	90.2	91.7		91.3	91.3	98.0	96.2	88.5	84.4	102.4	92.0	95.2	90.8	88.9	99.5	95.3	0.6	15.7	14.6
	May	92.6	92.3	93.8		93.3	93.3	98.8	96.5	89.7	84.2	100.2	94.0	95.2	91.9	88.4	98.0	91.3	2.1	15.1	15.1
	June	94.4	93.7	95.1		95.4	95.3	98.6	97.1	93.4	84.8	100.8	89.6	95.2	92.1	88.6	98.2	97.5	1.9	12.2	15.1
	July	96.5	95.5	97.5		97.7	97.7	100.4	95.7	95.9	99.6	102.5	87.2	98.3	94.7	90.4	98.3	99.0	2.3	12.0	14.8
	Aug	97.8	96.1	96.9		98.8	98.7	99.6	98.3	95.6	100.6	103.0	89.9	100.9	96.2	101.3	98.9	100.1	1.3	12.4	14.8
	Sep	98.5	97.4	98.2		99.4	99.3	98.6	98.4	96.8	97.2	103.9	93.2	100.9	95.8	99.8	100.1	99.6	0.7	11.5	14.7
	Oct	99.2	98.4	99.0		100.0	100.0	99.5	98.9	97.9	98.0	104.4	94.6	100.0	96.0	96.6	99.6	98.9	0.7	13.2	14.5
	Nov	100.0	100.0	100.0	100.0	100.0	100.0	100.0	100.0	100.0	100.0	100.0	100.0	100.0	100.0	100.0	100.0	100.0	0.8	14.2	14.3
	Dec	102.8	101.7	102.1	102.3	103.1	103.5	103.5	102.0	99.2	102.4	102.0	101.6	100.6	99.9	102.1	102.0	101.9	2.8	16.6	14.3
2010	Jan	103.6	101.9	102.4	102.2	104.4	104.9	103.6	101.8	98.9	103.9	103.5	102.7	99.5	100.7	103.6	105.5	103.7	0.8	16.5	14.4
	Feb	105.6	103.8	104.7	103.3	106.4	106.9	103.5	103.3	100.6	105.5	104.5	105.3	100.5	99.5	104.3	106.0	105.6	1.9	17.9	14.5
	Mar	104.0	102.8	103.5	102.6	104.6	104.9	104.7	103.3	100.0	105.3	104.0	102.1	100.4	100.1	104.4	104.0	103.0	-1.5	15.3	14.4
	Apr	105.6	103.6	104.7	106.6	106.8	107.2	105.6	104.3	100.8	102.3	103.3	106.8	100.0	98.7	104.7	108.2	105.5	1.5	16.4	14.5
	May	107.2	106.5	107.9	105.4	107.2	107.5	105.3	106.8	104.6	102.3	105.4	106.6	99.4	101.8	111.0	110.7	109.1	1.6	15.8	14.5
	Jun	109.6	107.8	109.2	109.2	111.2	111.5	109.9	109.4	104.4	112.4	108.9	108.4	101.0	101.5	106.4	105.4	109.9	2.2	16.1	14.9
	Jul	110.7	107.6	109.2	109.5	112.6	113.2	109.9	110.2	106.2	109.6	109.2	105.9	101.4	103.1	104.9	103.9	110.7	0.9	14.6	15.1
	Aug	113.0	109.6	110.8	111.4	114.7	115.2	114.2	113.4	108.9	109.9	111.8	107.4	100.4	103.9	104.3	103.7	110.7	2.1	15.6	15.3
	Sep	113.8	111.7	112.7	114.1	115.1	114.5	110.9	112.4	113.1	113.5	113.6	112.2	102.2	106.9	109.0	107.0	113.8	0.7	15.6	15.7
	Oct	114.0	113.5	113.6	113.9	114.4	114.5	113.5	113.9	111.2	116.4	118.1	108.1	104.1	110.0	111.5	110.6	110.5	0.1	15.0	15.8
	Nov	113.6	112.1	111.5	116.5	115.7	115.4	114.0	111.8	113.9	114.8	110.5	112.8	102.7	106.2	107.5	108.5	112.6	-0.3	13.6	15.7

Table 4 Rural Consumer Price Index (Base November 2009 = 100)

		All Items	All Items less Farm Produce.	All Items less Farm Produce. and Energy	Imported Food	Food	Food & Non Alcoholic Bev.	Alcoholic Beverage. Tobacco and Kola	Clothing and Footwear	Housing Water, Electricity. Gas and Other Fuel	Furnishings & Household Equipment Maintenance.	Health.	Transport	Communication	Recreation & Culture.	Education	Restaurant & Hotels	Miscellaneous Goods & Services	Month-on (%)	Year-on (%)	12-month average (%)
Weights		1000.0	503.1	417.4	113.7	532.3	540.9	10.6	85.7	147.2	50.7	32.2	57.2	4.0	6.7	38.9	10.1	15.8			
2011	Dec	115.9	113.8	113.7	117.0	117.1	117.2	113.7	113.6	114.3	114.7	112.6	114.0	103.6	106.6	109.0	108.2	111.5	2.0	12.7	15.4
	Jan	119.7	119.5	118.9	120.1	116.5	120.5	113.0	114.0	116.4	114.5	111.1	110.0	101.8	108.5	109.4	108.2	114.5	3.3	15.6	15.3
	Feb	118.8	116.7	116.4	129.4	119.4	120.2	116.1	116.8	114.1	116.6	111.4	121.9	107.4	108.4	109.7	110.1	113.8	-0.8	12.5	14.9
	Mar	121.1	119.6	120.2	120.6	119.9	119.8	115.2	117.3	114.2	116.6	115.0	118.4	107.8	109.2	110.6	109.1	111.9	1.9	16.4	15.0
	Apr	119.4	119.2	119.4	122.6	121.1	120.10	116.4	116.1	125.1	116.0	116.7	116.9	107.2	107.8	111.2	111.9	114.1	-1.3	13.1	14.7
	May	121.2	120.6	120.8	124.4	120.1	120.40	116.9	119.0	125.5	116.7	113.8	115.4	108.1	108.8	112.1	112.0	116.4	1.5	13.0	14.5
	Jun	122.6	122.4	122.8	111.5	121.9	121.49	116.0	118.6	126.0	117.1	118.8	120.1	108.7	109.2	112.6	112.1	120.6	1.1	11.8	14.1
	Jul	123.6	122.8	123.4	113.3	122.4	122.45	112.5	117.9	126.0	118.2	117.9	122.1	108.5	116.2	112.8	113.1	123.2	0.8	11.7	13.8
	Aug	125.6	123.3	123.8	118.1	126.9	127.0	118.6	119.4	128.4	120.1	119.9	121.8	108.8	110.9	113.2	114.2	125.4	1.6	11.1	13.5
	Sep	127.4	125.3	125.3	119.4	128.2	128.0	118.0	121.2	127.2	118.4	121.3	123.1	108.3	111.0	114.2	114.0	125.2	1.4	11.9	13.2
	Oct	128.6	127.8	128.0	118.1	128.4	127.9	120.1	121.8	131.0	118.8	121.8	123.0	108.6	122.1	114.6	114.8	126.4	0.9	12.8	13.0
	Nov	128.6	127.4	127.3	128.6	129.1	129.6	121.8	122.6	130.5	120.7	122.2	123.7	108.9	121.6	114.6	115.1	129.7	0.0	13.1	13.0
Dec	129.0	127.1	127.0	128.8	131.1	131.1	122.2	124.1	135.1	120.6	123.4	129.2	108.1	117.9	114.6	117.0	127.1	0.3	11.3	12.8	
2012	Jan	131.3	129.9	130.7	128.4	132.4	134.0	126.4	122.3	128.7	120.6	122.2	128.2	111.0	119.2	115.2	117.2	130.8	1.8	9.7	12.3
	Feb	131.6	130.0	130.9	128.4	131.8	131.7	126.4	122.3	128.8	120.6	122.2	128.2	111.0	119.2	115.2	117.2	130.8	0.3	10.9	12.2
	Mar	134.4	137.1	136.5	130.3	134.9	134.7	127.4	132.3	142.7	133.2	130.2	130.0	114.6	117.9	126.7	120.2	131.7	2.1	11.0	11.8
	Apr	134.4	137.0	136.5	131.8	135.0	134.8	127.7	132.0	142.3	133.6	130.7	130.3	115.1	118.3	125.5	121.0	131.8	0.01	12.5	11.7
	May	135.4	138.9	138.5	132.9	136.5	136.3	128.1	132.6	142.6	133.9	131.3	130.7	115.3	118.8	125.7	121.9	132.2	0.74	11.7	11.6
	Jun	136.5	139.8	138.1	133.0	137.4	137.2	128.5	132.6	146.3	134.3	131.6	131.3	115.7	119.0	125.9	122.6	132.5	0.83	11.4	11.6
	Jul	136.9	140.4	138.9	133.3	138.0	137.7	129.0	132.9	146.4	134.2	131.6	131.6	115.8	119.1	125.8	122.9	132.7	0.25	10.7	11.5
	Aug	137.8	140.9*	139.4	134.5	139.1	138.9	129.4	133.5	147.2	134.7	132.2*	132.1	116.0	119.3	126.6	123.0	132.8	0.65*	9.7	11.4
	Sep	139.0	141.3	139.6	134.4	140.6	140.3	130.0	134.2	148.9	135.7	132.4	132.9	116.2	120.0	126.8	124.0	132.9	0.89	9.1	11.1
	Oct	140.2	141.9	140.1	136.0	142.0	141.8	131.0	135.5	149.9	136.0	133.0	134.0	116.6	120.7	128.2	124.3	134.0	0.88	9.1	10.8
	Nov	141.1	142.5	141.0	137.7	143.2	142.9	132.0	136.3	150.3	136.7	133.7	134.2	116.8	120.8	129.0	124.5	134.5	0.63	9.8	10.5

Table 4 Rural Consumer Price Index (Base November 2009 = 100)

		All Items	All Items less Farm Produce.	All Items less Farm Produce. and Energy	Imported Food	Food	Food & Non Alcoholic Bev.	Alcoholic Beverage. Tobacco and Kola	Clothing and Footwear	Housing Water, Electricity. Gas and Other Fuel	Furnishings & Household Equipment Maintenance.	Health.	Transport	Communication	Recreation & Culture.	Education	Restaurant & Hotels	Miscellaneous Goods & Services	Month-on (%)	Year-on (%)	12-month average (%)
	Weights	1000.0	503.1	417.4	113.7	532.3	540.9	10.6	85.7	147.2	50.7	32.2	57.2	4.0	6.7	38.9	10.1	15.8			
	Dec	142.1	143.5	141.9	138.3	144.5	144.2	132.8	137.1	151.1	136.9	134.1	135.7	117.0	121.2	129.1	125.2	135.0	0.73	10.2	10.5
2013	Jan	143.2	144.9	142.4	139.5	145.7	145.4	133.6	138.4	152.0	138.5	134.5	136.1	117.1	121.4	129.2	125.6	135.2	0.73	9.1	10.4
	Feb	144.1	144.9	142.7	140.1	146.4	146.1	134.7	139.7	153.4	139.7	135.6	137.3	117.6	122.4	129.9	126.6	136.2	0.65	9.5	10.3
	Mar	145.3	147.1	145.9	140.0	148.2	147.9	135.4	139.8	153.9	139.8	136.5	137.5	117.9	122.6	131.0	126.5	137.7	0.82	8.1	10.0
	Apr	146.4	146.5	144.4	140.5	149.2	148.9	136.2	141.2	154.7	142.2	137.9	139.0	118.0	124.5	132.8	127.3	139.1	0.76	8.9	9.7
	May	147.1	147.2	144.5	140.9	149.8	149.5	137.1	142.3	155.3	143.0	139.3	139.9	118.4	125.2	133.5	128.1	139.9	0.50	8.6	9.5
	Jun	147.9	147.6	144.8	142.2	150.8	150.5	137.5	142.7	155.9	143.9	140.0	140.2	118.7	125.8	133.6	128.4	140.3	0.54	8.3	9.2
	Jul	148.6	148.8	146.9	143.2	151.7	151.4	138.4	143.4	156.6	144.2	140.6	140.6	119.0	126.0	133.8	129.2	140.7	0.50	8.6	9.1
	Aug	148.9	150.2	148.2	143.7	152.3	152.0	138.8	143.5	156.2	144.3	140.7	140.6	119.1	126.1	134.1	129.2	140.8	0.20	8.1	8.9
	Sep	150.0	151.9	149.9	144.7	153.6	153.3	139.5	144.3	157.1	145.0	141.4	141.5	119.6	126.5	135.2	130.2	141.6	0.74	8.0	8.8
	Oct	151.1	152.8	150.8	145.9	154.8	154.5	140.7	145.4	157.9	146.2	142.5	142.5	120.5	127.4	136.4	131.2	142.8	0.73	7.8	8.7
	Nov	152.2	153.8	151.9	146.8	156.0	155.7	141.3	146.4	158.8	147.3	143.2	143.2	120.9	128.2	137.2	132.1	144.1	0.68	7.8	8.6
	Dec	153.3	155.2	153.4	148.0	157.4	157.0	142.0	147.5	159.5	148.5	144.1	144.1	121.3	129.0	138.0	133.3	145.2	0.76	7.9	8.4
2014	Jan	154.4	155.5	153.3	149.0	158.6	158.3	142.7	148.4	160.2	149.2	144.9	145.3	122.1	130.2	138.7	134.0	146.1	0.68	7.8	8.3
	Feb	155.1	156.1	154.2	149.6	159.5	159.2	143.2	149.2	160.7	149.9	145.4	145.9	122.3	131.3	138.9	134.4	146.4	0.49	7.7	8.1
	Mar	156.4	156.8	154.9	150.7	161.2	160.8	144.0	149.9	161.6	150.8	146.4	146.9	122.8	131.8	139.5	135.2	147.2	0.81	7.6	8.1
	Apr	157.3	157.6	155.7	151.5	162.3	162.0	144.7	150.7	162.3	151.3	146.9	147.6	123.4	132.5	139.9	135.7	147.4	0.59	7.5	8.0
	May	158.5	158.6	156.7	152.8	163.6	163.2	145.6	152.1	163.4	152.6	148.0	148.6	124.0	133.5	141.0	136.9	148.6	0.77	7.8	7.9
	Jun	159.7	159.7	157.6	154.0	164.9	164.5	146.6	153.2	164.7	153.7	148.9	149.6	124.7	134.3	141.4	137.8	149.7	0.74	8.0	7.9
	Jul	160.7	159.8	157.9	154.4	166.0	165.6	147.5	154.1	165.8	154.2	149.5	150.0	124.8	134.9	141.6	138.7	150.4	0.60	8.1	7.8
	Aug	161.4	160.3	158.5	155.1	166.8	166.5	148.2	154.9	166.2	155.0	150.3	150.7	125.0	135.5	142.5	139.2	151.2	0.47	8.4	7.9

NB: *indicates class indices adjusted due to rounding errors

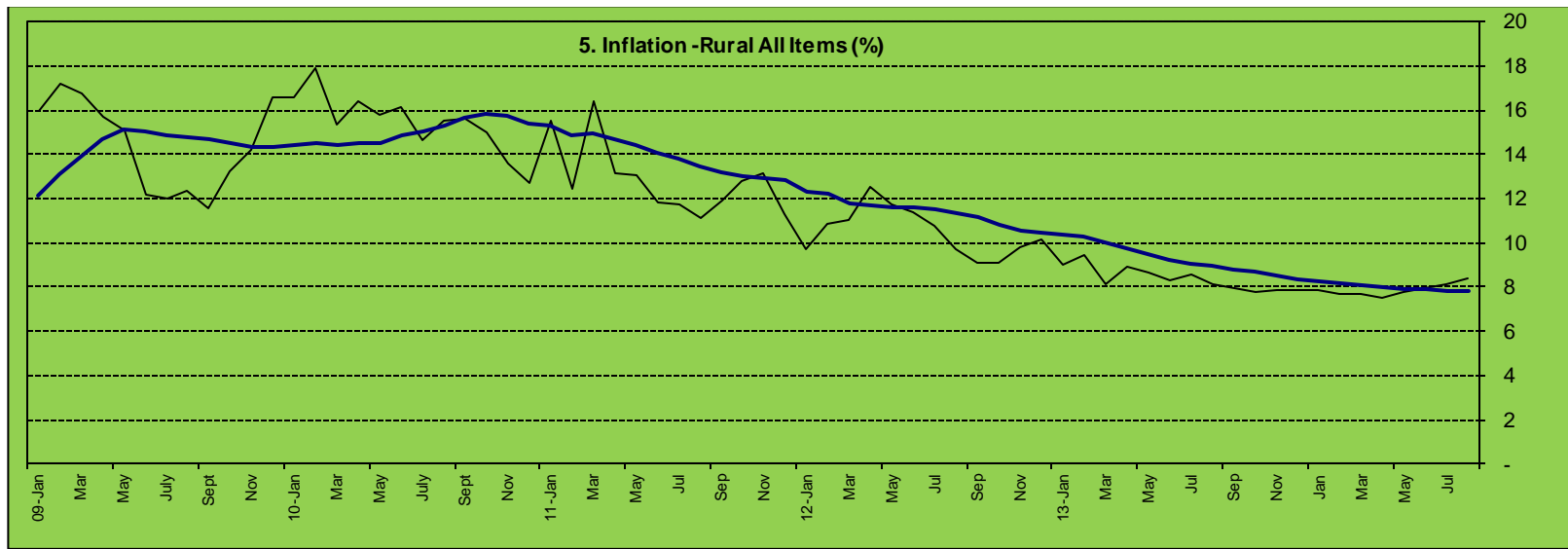


Table 5 Combined Urban And Rural State Consumer Price Index

(Base Period: November 2009 = 100)						
State	Aug-13		July-14		Aug-14	
	Food	All Items	Food	All Items	Food	All Items
Abia	159.6	149.8	168.9	161.0	170.0	161.9
Abuja	136.0	143.9	158.3	165.4	158.7	166.2
Adamawa	142.7	137.6	162.6	159.1	163.4	159.9
Akwalbom	145.6	152.9	166.4	157.4	167.8	158.4
Anambra	144.0	140.6	154.6	153.3	156.2	154.8
Bauchi	140.6	156.0	153.3	160.9	154.8	162.1
Bayelsa	160.8	167.0	172.8	170.5	173.3	171.1
Benue	167.0	158.1	179.3	167.8	180.2	168.8
Borno	165.1	148.6	162.6	154.7	163.7	156.0
Cross River	149.3	164.7	158.3	158.6	159.3	159.5
Delta	140.6	158.8	158.2	156.2	159.2	156.9
Ebonyi	140.4	137.4	157.4	154.7	158.9	155.4
Edo	143.7	166.3	156.6	174.2	158.0	174.9
Ekiti	139.7	149.9	156.7	153.9	158.2	154.7
Enugu	146.3	142.4	159.6	154.4	160.6	155.5
Gombe	168.1	158.9	162.7	160.3	163.8	161.1
Imo	150.1	148.3	162.3	156.6	163.4	157.8
Jigawa	143.7	146.4	164.5	160.6	164.4	160.5
Kaduna	148.3	143.1	164.1	159.9	163.9	160.1
Kano	137.9	139.0	160.7	158.4	160.6	158.2
Katsina	154.0	134.4	164.0	148.5	163.7	148.4
Kebbi	135.3	138.8	154.9	157.3	154.9	157.1
Kogi	206.4	202.1	218.6	202.4	219.9	203.3
Kwara	160.6	194.2	165.6	181.4	167.1	182.1
Lagos	152.2	151.6	170.7	169.4	172.3	170.8
Nassarawa	141.0	146.3	153.8	154.9	154.7	155.9
Niger	150.0	158.2	154.9	160.0	156.0	160.7
Ogun	139.3	145.5	161.3	161.8	163.1	163.7
Ondo	147.6	145.8	162.7	160.2	164.1	161.1
Osun	140.8	147.9	157.8	157.5	159.5	159.0
Oyo	154.8	152.4	175.6	169.0	176.9	170.0
Plateau	156.3	157.6	163.6	160.3	165.2	161.7
Rivers	149.5	145.1	166.0	157.9	166.9	158.7
Sokoto	141.2	142.8	156.8	154.0	156.9	154.1
Taraba	150.6	143.3	166.5	160.8	167.6	161.7
Yobe	149.5	143.7	167.1	163.7	167.4	164.2
Zamfara	147.7	145.4	160.5	156.7	160.5	156.8

Note: Indices may not be used for inter-state price comparison because market baskets differ from State to State

