

CONSUMER PRICE INDEX

(BASE PERIOD NOVEMBER 2009 = 100)



No. 531
JUNE 2014



NATIONAL BUREAU OF STATISTICS

BRIEF METHODOLOGY:

The CPI measures the average change over time in prices of goods and services consumed by people for day-to-day living. The construction of the CPI combines economic theory, sampling and other statistical techniques using data from other surveys to produce a weighted measure of average price changes in the Nigerian economy. The weighting occurs to capture the importance of the selected commodities in the entire index. The production of the CPI requires skills of economists, statisticians, computer scientists, data collectors and others.

Key in the construction of the price index is the selection of the market basket of goods and services. Every month, 10,534 informants spread across the country provide price data for the computation of the CPI. The market items currently comprise of 740 goods and services regularly priced.

The first stage in the calculation of the CPI is the collection of prices on each item (740 goods and services) from outlets in each sector (rural or urban) for each state. Prices are then averaged for each item according to sector across the state. The next step is to use the average price to calculate the basic index for each commodity: The current year price of each commodity is compared with a base year's price to obtain a relative price.

Next we use the Laspeyres formula to compute an aggregated index for each class (which has a multitude of commodities which have similar consumption purposes): Here the sum of the product of weights

(obtained from the expenditure survey) and relative prices for each item is divided by the sum of the weight of the items in that class, and the result multiplied by 100 gives the required index number. This index number is still classified according to the urban or rural classification sector for each of the 36 states and the FCT. This yields 85 classes then 48 groups which are then reclassified into 12 Divisions to derive:

1. The country composite index
2. The Urban National index
3. The Rural National index
4. The Combined Urban and Rural State Composite index

The survey methodology generates 3774 all items indices for all states and the FCT.

This edition of the Statistical News contains the revised Consumer Price Index (CPI) based on Nigeria Living Standard Survey (NLSS) 2003/2004. The consumption expenditure data were re-valued to November 2009, which is the base period for the revised CPI.

The May 2003 and September 1985 based indices are being continued using factors derived from the new CPI. All of these indices will yield the same price change for any commodity group contained in all the series. A new sub index – Imported Food Index- is available in the revised CPI.

Note: The urban and rural indices were weighted with the ratio of their populations to the national i.e. 0.455 and 0.545 respectively to compute the composite indices at the 12 COICOP functions and all items

levels. This may cause variance between a recalculated all items index using the weights published on table 2 and the published all items index because the published weights

were computed only from consumption expenditure survey result. The following breakdown highlights a non-exhaustive list of the components of the current CPI:

FOOD AND NON ALCOHOLIC BEVERAGES

Food

Bread and cereals

Meat

Fish

Milk, cheese and eggs

Oils and fats

Fruit

Vegetables

Potatoes, Yam & other tubers

Food products n.e.c

Coffee, tea and cocoa

Soft drinks

ALCOHOLIC BEVERAGES, TOBACCO AND KOLA

Spirits

Wine

Tobacco

Narcotics

CLOTHING AND FOOTWEAR

Clothing materials, other articles of clothing

Garments

Cleaning, repair and hire of clothing

Shoes and other footwear

Repair and hire of footwear

HOUSING, WATER, ELECTRICITY, GAS

Actual and imputed rentals for housing

Water supply

Miscellaneous services relating to the dwelling

Electricity

Gas

Liquid fuel

Solid fuels

FURNISHINGS, HOUSEHOLD EQUIPMENT

Furniture and furnishings

Carpets and other floor coverings

Repair of Furniture

Household textiles

Major household appliances whether electric or not

Repair of household appliances

| |
|--|
| Glassware, tableware and household utensils |
| Non-durable household goods |
| Domestic services and household services |
| HEALTH |
| Pharmaceutical products |
| Medical services |
| Dental services |
| Paramedical services |
| Hospital services |
| TRANSPORT |
| Motor cars |
| Motor cycles |
| Bicycles |
| Vehicle spare parts |
| Fuels and lubricants for personal transportation |
| Maintenance and repair of personal transport |
| Passenger transport by road |
| Passenger transport by air |
| Passenger transport by sea and inland waterways |
| COMMUNICATION |
| Postal services |
| Telephone and telefax equipment |
| Telephone and telefax services |
| RECREATION AND CULTURE |
| Audio-visual, photographic and information processing equipments |
| Photographic development |
| Musical instrument |
| Recreational and sporting services |
| Games of chance |
| EDUCATION |
| Books & stationery |
| RESTAURANTS AND HOTELS |
| Catering services |
| Accommodation services |
| MISCELLANEOUS GOODS AND SERVICES |
| Hairdressing salons and personal grooming establishments |
| Appliances, articles and products for personal care |
| Jewellery, clocks and watches |
| Insurance |
| Other services. |

ALL ITEMS INDEX

In June 2014, the Consumer Price Index (CPI), which measures inflation, edged higher from the previous month. Prices rose by 8.2 percent (year-on-year) in June, up by 0.2 percentage points from 8.0 percent recorded in May. This is the fourth consecutive month of year-on-year increases in the Headline index since the pace of price increases eased in February.

The price increases recorded in June's Headline index were as a result of an increase all divisions that contribute to the index. Price increases were also recorded in the Food and Core sub-indices. Specifically, food prices as observed by the Food sub-index edged marginally higher to 9.8 percent from 9.7 percent in June. Prices were pushed higher as a result of higher prices in the Bread and Cereals, Meats, Fish, and Dairy groups. The price increases in the food sub-index were however weighed down by relatively slower increases in the Oils and Fats, Fruits and Vegetable groups.

Prices measured by the "All items less farm produce" or Core sub-index increased at a faster rate in June. Prices rose by 8.1 percent (year-on-year), 0.4 percentage points higher from the rate recorded in May and surpassing the previous high for the year recorded in May. Increases were observed in all non-food divisions which contribute to the core sub-index.

It should be noted that the Headline Index is made up of the Core Index and Farm Produce items. As Processed Foods are included in both the Core and Food sub-indices, this implies that these sub-indices are not mutually-exclusive.

COMPOSITION OF THE MAJOR INDEX AND SUB-INDICES

All Items = Farm Produce + Core index

Food = Farm Produce + Processed Foods

Core = All Items – Farm Produce

On a month on month basis, price increases in the headline index eased to 0.77 percent in June, marginally lower from a 0.78 percent increase in May. Prices increases continue to move in a side-ways fashion since the start of the year.

Urban prices increased at a faster rate for the second consecutive month in June to 8.4 percent, up 0.2 percentage points from May. Rural prices also increased by 0.2 percentage points to 8.0 percent in June. On a month on month basis, prices in the Urban areas moved at the same pace in June as in May, moving by 0.8 percentage points. The Rural All-items indices rose albeit at a slower pace by 0.74 percent in June, down from 0.77 percent in May.

The percentage change in the average composite CPI for the twelve-month period ending in June 2014 over the average of the CPI for the previous twelve-month period was recorded at 8.0 percent, unchanged from the average twelve month rate of change recorded in May 2014. The corresponding 12-month year-on-year average percentage change for the Urban index was 8.1 percent in June, marginally lower from 8.2 percent recorded in the previous month while the corresponding Rural index firmed at 7.9 percent for the Month of June.

FOOD INDEX

As observed by the Food sub-index, food prices increased by 9.8 percent in June, marginally higher from 9.7 percent recorded in May. While food prices have increased for the fourth consecutive month (year-on-year), during the first half of the year, the pace of increase in prices has slowed relative to the first half of 2013. From January to June of 2014, year on year rates averaged 9.4 percent, 0.5 percentage points lower from the previous half year.

On a month-on-month basis, food prices increased at the same rate of

change for three consecutive months by 0.8 percent.

On a month-on-month basis, the highest price increases were recorded in Potatoes, Yams and Other tubers, Bread and cereals, Meat, and Fish groups. The average annual rate of change of the Food sub-index for the twelve-month period ending in June 2014 was 9.5 percent, marginally higher from the average annual rate of change of the 12 month period ending in May 2014 at 9.4 percent.

ALL ITEMS LESS FARM PRODUCE

In June, the “All items less Farm Produce” or Core index, which excludes the prices of volatile agricultural products increased at the fastest rate recorded this year (year-on-year) by 8.1 percent. This was higher than the rate recorded in May by 0.4 percentage points.

On a month-on-month basis, prices also increased at the fastest rate for the year, increasing by 0.7 percent. This was marginally higher from the

0.6 percent rate recorded in May. The increase in the Core sub-index (month-on-month) was as a result of price increases across various group items in particular electricity prices, Jewellery, clocks and watches, furniture repair prices. The average 12 month annual rate of rise of the index was recorded at 7.4 percent for the twelve-month period ending in June 2014, up from the previous 12 month rate of change recorded in May by 0.2 percentage points.

For enquiries relating to this CPI report, please contact:
ykale@nigerianstat.gov.ng and udeokenwa@yahoo.com

Follow us on twitter [@nigerianstat](https://twitter.com/nigerianstat) and online at www.nigerianstat.gov.ng

Table 1 Composite Consumer Price Index (Base November 2009 = 100)

| | | All Items Index (Farm Produce + All Items Less Farm Produce) | | | | | All Items less Farm Produce (includes Processed Food) | | | | Food (Farm Produce + Processed Food) | | | |
|--|------|---|-------------------------|-------------------------------|--------------------------|--|--|-------------------------------|------------------------------|--|---|-------------------------------|------------------------------|--|
| | | Monthly | 12- Month Average | Month- on change (%) | Year-on change (%) | 12- Month average change (%) | Monthly | Month- on change (%) | Year- on change (%) | 12- Month average change (%) | Monthly | Month- on change (%) | Year- on change (%) | 12- Month average change (%) |
| Weights** | | 1000.0 | | | | | 513.10 | | | | 507.06 | | | |
| Please note that the above weights are only expenditure weights which are still adjusted by population across 37 states. They should not be taken as the final weights in the computation of the CPI | | | | | | | | | | | | | | |
| 2009 | Jan | 90.2 | 86.0 | 0.5 | 14.0 | 12.0 | 91.1 | -0.1 | 8.0 | 5.5 | 89.5 | 0.9 | 18.4 | 16.5 |
| | Feb | 90.8 | 87.0 | 0.7 | 14.6 | 12.6 | 91.7 | 0.6 | 7.2 | 5.6 | 90.2 | 0.8 | 20.0 | 17.5 |
| | Mar | 91.4 | 87.9 | 0.6 | 14.4 | 13.1 | 92.0 | 0.3 | 11.8 | 6.5 | 90.9 | 0.8 | 16.2 | 17.7 |
| | Apr | 91.9 | 88.8 | 0.6 | 13.3 | 13.5 | 92.5 | 0.6 | 10.9 | 7.3 | 91.6 | 0.7 | 15.3 | 17.9 |
| | May | 93.6 | 89.8 | 1.8 | 13.2 | 13.8 | 94.2 | 1.8 | 9.9 | 7.8 | 93.5 | 2.0 | 15.7 | 17.9 |
| | June | 95.3 | 90.6 | 1.8 | 11.2 | 13.7 | 95.3 | 1.2 | 8.5 | 8.3 | 95.6 | 2.2 | 13.1 | 17.5 |
| | July | 97.3 | 91.4 | 2.1 | 11.1 | 13.4 | 96.8 | 1.5 | 8.3 | 8.6 | 97.9 | 2.4 | 12.9 | 16.8 |
| | Aug | 98.4 | 92.2 | 1.1 | 11.0 | 13.3 | 97.3 | 0.5 | 8.0 | 8.9 | 98.9 | 1.1 | 12.7 | 16.3 |
| | Sep | 98.9 | 93.0 | 0.5 | 10.4 | 13.1 | 98.1 | 0.8 | 7.4 | 8.9 | 99.5 | 0.6 | 12.5 | 15.9 |
| | Oct | 99.4 | 93.8 | 0.5 | 11.6 | 12.8 | 98.9 | 0.8 | 8.9 | 9.0 | 99.9 | 0.4 | 13.5 | 15.4 |
| | Nov | 100.0 | 94.7 | 0.7 | 12.4 | 12.6 | 100.0 | 1.1 | 10.7 | 9.1 | 100.0 | 0.1 | 13.5 | 15.0 |
| | Dec | 102.2 | 95.8 | 2.2 | 13.9 | 12.5 | 101.5 | 1.5 | 11.2 | 9.2 | 102.4 | 2.4 | 15.5 | 14.8 |
| 2010 | Jan | 103.1 | 96.9 | 1.0 | 14.4 | 12.6 | 102.1 | 0.6 | 12.1 | 9.6 | 103.7 | 1.3 | 15.9 | 14.7 |
| | Feb | 105.0 | 98.0 | 1.9 | 15.6 | 12.7 | 104.5 | 2.3 | 14.0 | 10.1 | 104.8 | 1.1 | 16.2 | 14.4 |
| | Mar | 104.9 | 99.2 | -0.1 | 14.8 | 12.8 | 104.1 | -0.4 | 13.2 | 10.3 | 105.3 | 0.4 | 15.8 | 14.4 |
| | Apr | 105.7 | 100.3 | 0.8 | 15.0 | 12.9 | 104.4 | 0.3 | 12.8 | 10.4 | 106.6 | 1.2 | 16.3 | 14.5 |
| | May | 105.7 | 101.3 | -0.04 | 12.9 | 12.9 | 105.2 | 0.8 | 11.7 | 10.6 | 105.7 | -0.8 | 13.0 | 14.3 |

Table 1 Composite Consumer Price Index (Base November 2009 = 100)

| | | All Items Index (Farm Produce + All Items Less Farm Produce) | | | | | All Items less Farm Produce (includes Processed Food) | | | | Food (Farm Produce + Processed Food) | | | |
|--|-----|---|-------------------------|-------------------------------|--------------------------|--|--|-------------------------------|------------------------------|--|---|-------------------------------|------------------------------|--|
| | | Monthly | 12- Month Average | Month- on change (%) | Year-on change (%) | 12- Month average change (%) | Monthly | Month- on change (%) | Year- on change (%) | 12- Month average change (%) | Monthly | Month- on change (%) | Year- on change (%) | 12- Month average change (%) |
| Weights** | | 1000.0 | | | | | 513.10 | | | | 507.06 | | | |
| Please note that the above weights are only expenditure weights which are still adjusted by population across 37 states. They should not be taken as the final weights in the computation of the CPI | | | | | | | | | | | | | | |
| | Jun | 108.8 | 102.4 | 2.91 | 14.1 | 13.1 | 107.4 | 2.1 | 12.7 | 10.9 | 110.0 | 4.1 | 15.1 | 14.4 |
| | Jul | 109.9 | 103.5 | 1.08 | 13.0 | 13.3 | 107.7 | 0.3 | 11.3 | 11.2 | 111.6 | 1.5 | 14.0 | 14.5 |
| | Aug | 111.9 | 104.6 | 1.76 | 13.7 | 13.5 | 109.3 | 1.5 | 12.4 | 11.5 | 113.8 | 2.0 | 15.1 | 14.7 |
| | Sep | 112.4 | 105.7 | 0.46 | 13.6 | 13.8 | 110.7 | 1.3 | 12.8 | 12.0 | 114.0 | 0.1 | 14.6 | 14.9 |
| | Oct | 112.7 | 106.9 | 0.30 | 13.4 | 13.9 | 111.9 | 1.1 | 13.2 | 12.3 | 114.0 | -0.0 | 14.1 | 14.9 |
| | Nov | 112.8 | 107.9 | 0.04 | 12.8 | 13.9 | 111.7 | -0.1 | 11.7 | 12.4 | 114.4 | 0.3 | 14.4 | 15.0 |
| | Dec | 114.2 | 108.9 | 1.29 | 11.8 | 13.7 | 112.6 | 0.7 | 10.9 | 12.4 | 115.4 | 0.9 | 12.7 | 14.7 |
| 2011 | Jan | 115.6 | 110.0 | 1.20 | 12.1 | 13.5 | 114.5 | 1.7 | 12.1 | 12.4 | 114.3 | -0.9 | 10.3 | 14.2 |
| | Feb | 116.7 | 110.9 | 0.96 | 11.1 | 13.2 | 115.5 | 0.9 | 10.6 | 12.1 | 117.7 | 2.9 | 12.2 | 13.9 |
| | Mar | 118.3 | 112.1 | 1.37 | 12.8 | 13.0 | 117.5 | 1.7 | 12.8 | 12.1 | 118.1 | 0.4 | 12.2 | 13.6 |
| | Apr | 117.7 | 113.0 | -0.54 | 11.3 | 12.7 | 117.9 | 0.3 | 12.9 | 12.1 | 119.0 | 0.7 | 11.6 | 13.2 |
| | May | 118.7 | 114.1 | 0.91 | 12.4 | 12.6 | 118.9 | 0.9 | 13.0 | 12.2 | 118.5 | -0.3 | 12.2 | 13.2 |
| | Jun | 119.9 | 115.1 | 0.97 | 10.2 | 12.3 | 119.8 | 0.7 | 11.5 | 12.1 | 120.1 | 1.3 | 9.2 | 12.7 |
| | Jul | 120.3 | 115.9 | 0.32 | 9.4 | 12.0 | 120.1 | 0.2 | 11.5 | 12.1 | 120.4 | 0.2 | 7.9 | 12.1 |
| | Aug | 122.3 | 116.8 | 1.67 | 9.3 | 11.6 | 121.2 | 0.9 | 10.9 | 12.0 | 123.7 | 2.7 | 8.7 | 11.6 |

Table 1 Composite Consumer Price Index (Base November 2009 = 100)

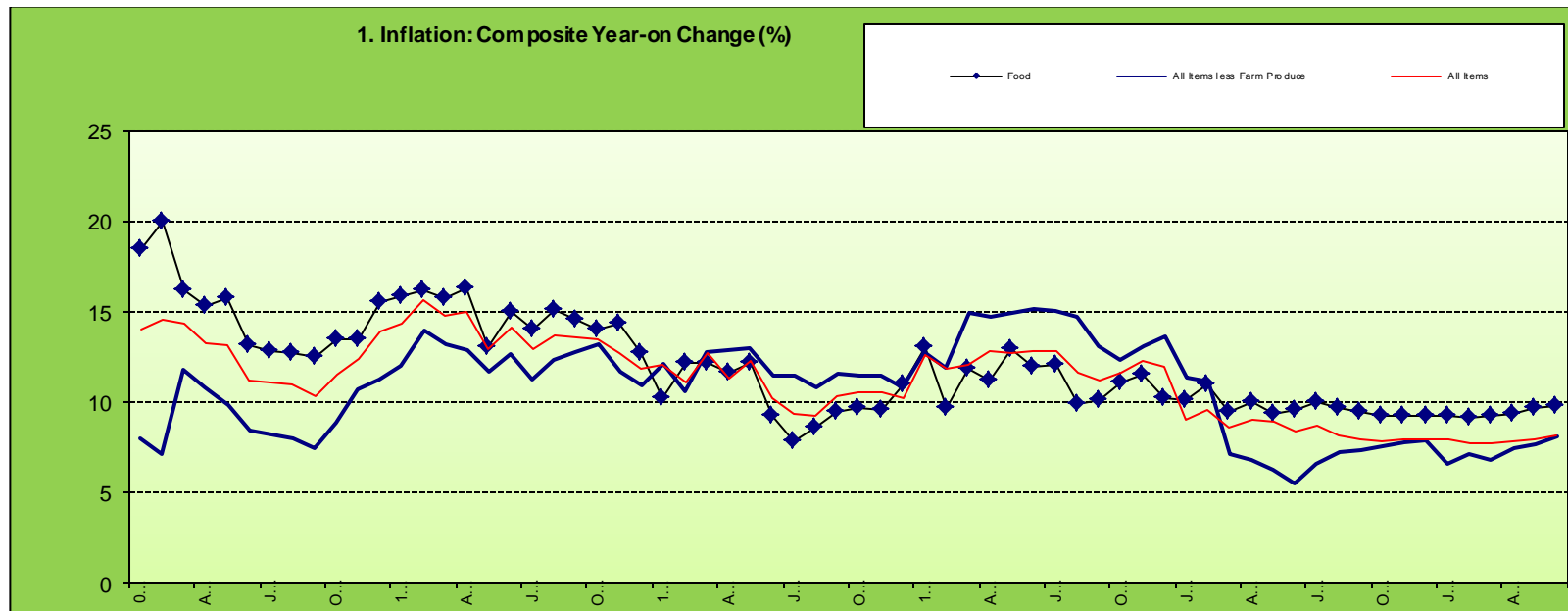
| | | All Items Index (Farm Produce + All Items Less Farm Produce) | | | | | All Items less Farm Produce (includes Processed Food) | | | | Food (Farm Produce + Processed Food) | | | |
|--|-----|---|-------------------------|-------------------------------|--------------------------|--|--|-------------------------------|------------------------------|--|---|-------------------------------|------------------------------|--|
| | | Monthly | 12- Month Average | Month- on change (%) | Year-on change (%) | 12- Month average change (%) | Monthly | Month- on change (%) | Year- on change (%) | 12- Month average change (%) | Monthly | Month- on change (%) | Year- on change (%) | 12- Month average change (%) |
| Weights** | | 1000.0 | | | | | 513.10 | | | | 507.06 | | | |
| Please note that the above weights are only expenditure weights which are still adjusted by population across 37 states. They should not be taken as the final weights in the computation of the CPI | | | | | | | | | | | | | | |
| | Sep | 124.0 | 117.8 | 1.41 | 10.3 | 11.4 | 123.5 | 1.9 | 11.6 | 11.9 | 124.8 | 0.9 | 9.5 | 11.2 |
| | Oct | 124.6 | 118.8 | 0.49 | 10.5 | 11.1 | 124.8 | 1.1 | 11.5 | 11.7 | 125.0 | 0.2 | 9.7 | 10.8 |
| | Nov | 124.7 | 119.7 | 0.04 | 10.5 | 11.0 | 124.6 | -0.2 | 11.5 | 11.7 | 125.4 | 0.3 | 9.6 | 10.4 |
| | Dec | 126.0 | 120.7 | 1.06 | 10.3 | 10.8 | 124.8 | 0.2 | 10.8 | 11.7 | 128.1 | 2.2 | 11.0 | 10.3 |
| 2012 | Jan | 130.2 | 121.9 | 3.35 | 12.6 | 10.9 | 129.1 | 3.5 | 12.7 | 11.8 | 129.3 | 0.9 | 13.1 | 10.5 |
| | Feb | 130.5 | 123.1 | 0.28 | 11.9 | 11.0 | 129.3 | 0.1 | 11.9 | 11.9 | 129.1 | -0.1 | 9.7 | 10.3 |
| | Mar | 132.6 | 124.3 | 1.59 | 12.1 | 10.9 | 135.1 | 4.5 | 15.0 | 12.1 | 132.1 | 2.3 | 11.8 | 10.3 |
| | Apr | 132.8 | 125.5 | 0.13 | 12.9 | 11.1 | 135.2 | 0.1 | 14.7 | 12.2 | 132.3 | 0.2 | 11.2 | 10.3 |
| | May | 133.8 | 126.8 | 0.75 | 12.7 | 11.1 | 136.7 | 1.1 | 14.9 | 12.4 | 133.9 | 1.2 | 12.9 | 10.4 |
| | Jun | 135.3 | 128.1 | 1.15 | 12.9 | 11.3 | 138.0 | 1.0 | 15.2 | 12.7 | 134.5 | 0.5 | 12.0 | 10.6 |
| | Jul | 135.7 | 129.4 | 0.24 | 12.8 | 11.6 | 138.1 | 0.1 | 15.0 | 13.0 | 135.0 | 0.3 | 12.1 | 11.0 |
| | Aug | 136.6 | 130.6 | 0.67 | 11.7 | 11.8 | 139.0 | 0.6 | 14.7 | 13.3 | 135.9 | 0.7 | 9.9 | 11.1 |
| | Sep | 138.0 | 131.7 | 1.01 | 11.3 | 11.9 | 139.7 | 0.5 | 13.1 | 13.5 | 137.5 | 1.1 | 10.2 | 11.1 |
| | Oct | 139.2 | 133.0 | 0.88 | 11.7 | 11.9 | 140.3 | 0.4 | 12.4 | 13.5 | 138.8 | 1.0 | 11.1 | 11.2 |
| | Nov | 140.0 | 134.2 | 0.60 | 12.3 | 12.1 | 140.9 | 0.4 | 13.1 | 13.6 | 139.8 | 0.7 | 11.6 | 11.4 |

Table 1 Composite Consumer Price Index (Base November 2009 = 100)

| | | All Items Index (Farm Produce + All Items Less Farm Produce) | | | | | All Items less Farm Produce (includes Processed Food) | | | | Food (Farm Produce + Processed Food) | | | |
|--|-----|---|-------------------------|-------------------------------|--------------------------|--|--|-------------------------------|------------------------------|--|---|-------------------------------|------------------------------|--|
| | | Monthly | 12- Month Average | Month- on change (%) | Year-on change (%) | 12- Month average change (%) | Monthly | Month- on change (%) | Year- on change (%) | 12- Month average change (%) | Monthly | Month- on change (%) | Year- on change (%) | 12- Month average change (%) |
| Weights** | | 1000.0 | | | | | 513.10 | | | | 507.06 | | | |
| Please note that the above weights are only expenditure weights which are still adjusted by population across 37 states. They should not be taken as the final weights in the computation of the CPI | | | | | | | | | | | | | | |
| | Dec | 141.1 | 135.5 | 0.75 | 12.0 | 12.2 | 141.8 | 0.7 | 13.7 | 13.9 | 141.2 | 1.0 | 10.2 | 11.3 |
| 2013 | Jan | 141.9 | 136.5 | 0.62 | 9.0 | 11.9 | 143.8 | 1.4 | 11.3 | 13.7 | 142.3 | 0.8 | 10.1 | 11.1 |
| | Feb | 143.0 | 137.5 | 0.75 | 9.5 | 11.7 | 143.8 | 0.0 | 11.2 | 13.7 | 143.3 | 0.7 | 11.0 | 11.2 |
| | Mar | 144.0 | 138.4 | 0.71 | 8.6 | 11.4 | 144.8 | 0.7 | 7.2 | 13.0 | 144.6 | 1.0 | 9.5 | 11.0 |
| | Apr | 144.8 | 139.4 | 0.55 | 9.1 | 11.1 | 144.5 | -0.2 | 6.9 | 12.3 | 145.6 | 0.6 | 10.0 | 10.8 |
| | May | 145.8 | 140.4 | 0.67 | 9.0 | 10.8 | 145.2 | 0.5 | 6.2 | 11.5 | 146.4 | 0.5 | 9.3 | 10.5 |
| | Jun | 146.6 | 141.4 | 0.59 | 8.4 | 10.4 | 145.5 | 0.3 | 5.5 | 10.7 | 147.5 | 0.7 | 9.6 | 10.4 |
| | Jul | 147.4 | 142.4 | 0.54 | 8.7 | 10.0 | 147.2 | 1.2 | 6.6 | 10.0 | 148.4 | 0.7 | 10.0 | 10.2 |
| | Aug | 147.8 | 143.3 | 0.25 | 8.2 | 9.8 | 149.1 | 1.3 | 7.2 | 9.4 | 149.2 | 0.5 | 9.7 | 10.2 |
| | Sep | 148.9 | 144.2 | 0.75 | 8.0 | 9.5 | 150.0 | 0.6 | 7.4 | 8.9 | 150.4 | 0.9 | 9.4 | 10.1 |
| | Oct | 150.0 | 145.1 | 0.75 | 7.8 | 9.2 | 150.9 | 0.6 | 7.6 | 8.6 | 151.6 | 0.8 | 9.2 | 10.0 |
| | Nov | 151.1 | 146.1 | 0.72 | 7.9 | 8.8 | 151.8 | 0.6 | 7.8 | 8.1 | 152.9 | 0.8 | 9.3 | 9.8 |
| | Dec | 152.3 | 147.0 | 0.78 | 8.0 | 8.5 | 153.0 | 0.8 | 7.9 | 7.7 | 154.3 | 0.9 | 9.3 | 9.7 |
| 2014 | Jan | 153.3 | 147.9 | 0.64 | 8.0 | 8.4 | 153.3 | 0.2 | 6.6 | 7.3 | 155.5 | 0.8 | 9.3 | 9.6 |
| | Feb | 154.0 | 148.8 | 0.50 | 7.7 | 8.3 | 154.1 | 0.5 | 7.2 | 7.0 | 156.5 | 0.6 | 9.2 | 9.5 |
| | Mar | 155.2 | 149.8 | 0.78 | 7.8 | 8.2 | 154.7 | 0.4 | 6.8 | 7.0 | 158.0 | 1.0 | 9.3 | 9.5 |

Table 1 Composite Consumer Price Index (Base November 2009 = 100)

| | All Items Index (Farm Produce + All Items Less Farm Produce) | | | | | | All Items less Farm Produce (includes Processed Food) | | | | Food (Farm Produce + Processed Food) | | | |
|--|---|-------------------------|-------------------------------|--------------------------|--|-----|--|-------------------------------|------------------------------|--|---|-------------------------------|------------------------------|--|
| | Monthly | 12- Month Average | Month- on change (%) | Year-on change (%) | 12- Month average change (%) | | Monthly | Month- on change (%) | Year- on change (%) | 12- Month average change (%) | Monthly | Month- on change (%) | Year- on change (%) | 12- Month average change (%) |
| Weights** | 1000.0 | | | | | | 513.10 | | | | 507.06 | | | |
| Please note that the above weights are only expenditure weights which are still adjusted by population across 37 states. They should not be taken as the final weights in the computation of the CPI | | | | | | | | | | | | | | |
| | Apr | 156.2 | 150.7 | 0.62 | 7.9 | 8.1 | 155.3 | 0.4 | 7.5 | 7.0 | 159.3 | 0.8 | 9.4 | 9.4 |
| | May | 157.4 | 151.7 | 0.78 | 8.0 | 8.0 | 156.3 | 0.6 | 7.7 | 7.2 | 160.6 | 0.8 | 9.7 | 9.4 |
| | Jun | 158.6 | 152.7 | 0.77 | 8.2 | 8.0 | 157.4 | 0.7 | 8.1 | 7.4 | 161.9 | 0.8 | 9.8 | 9.5 |



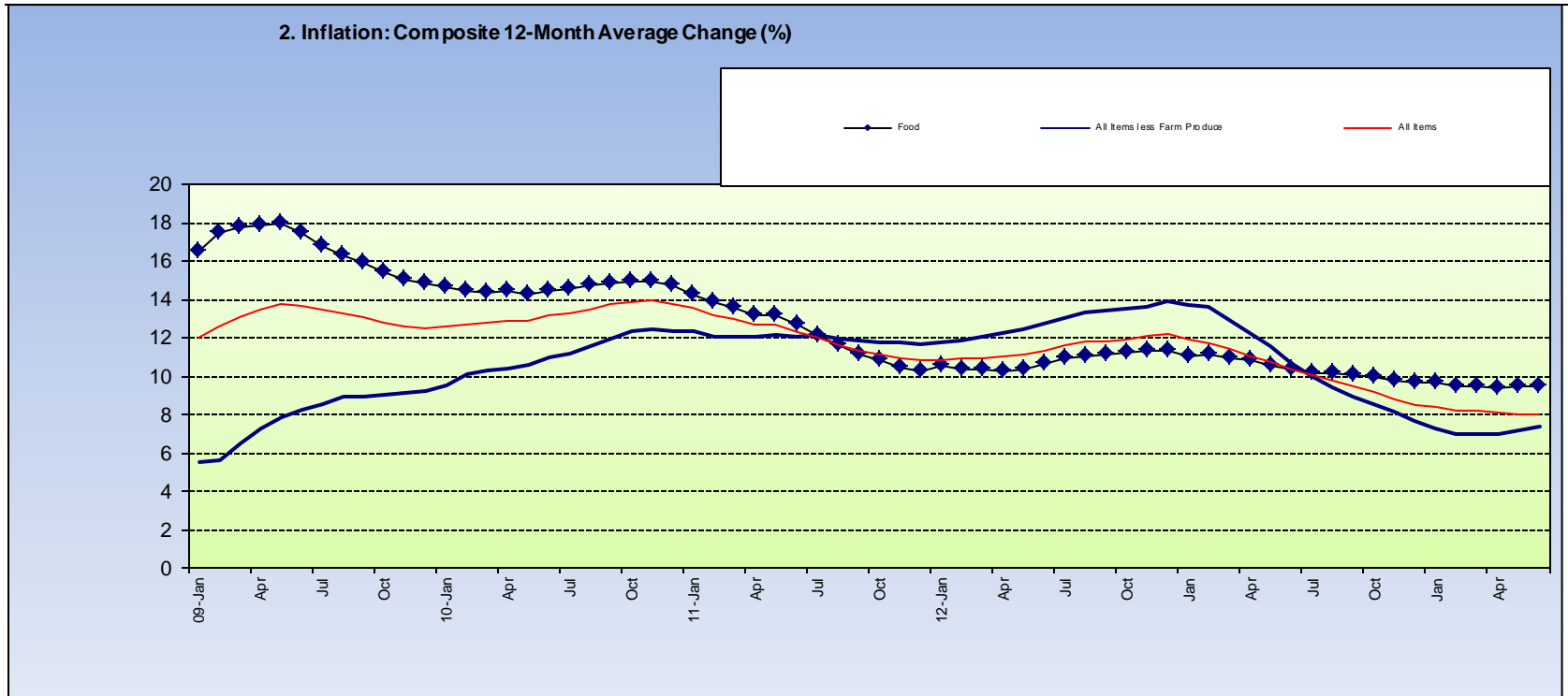


Table 2 Composite Consumer Price Index (Base November 2009 = 100)

| | | All Items | All Items less Farm Produce. | All Items less Farm Produce. and Energy | Imported Food | Food | Food & Non Alcoholic Bev. | Alcoholic Beverage. Tobacco and Kola | Clothing and Footwear | Housing Water, Electricity, Gas and Other Fuel | Furnishings & Household Equipment Maintenance. | Health. | Transport | Communication | Recreation & Culture. | Education | Restaurant & Hotels | Miscellaneous Goods & Services | Month-on (%) | Year-on (%) | 12-month average (%) |
|--|------|-----------|------------------------------|---|---------------|--------|---------------------------|--------------------------------------|-----------------------|--|--|---------|-----------|---------------|-----------------------|-----------|---------------------|--------------------------------|--------------|-------------|----------------------|
| Weights** | | 1000 | 513.1 | 428.1 | 132.5 | 507.06 | 518 | 10.87 | 76.5 | 167.3 | 50.26 | 30 | 65.1 | 6.8 | 6.91 | 39.44 | 12.1 | 16.6 | | | |
| Please note that the above weights are only expenditure weights which are still adjusted by population across 37 states. They should not be taken as the final weights in the computation of the CPI | | | | | | | | | | | | | | | | | | | | | |
| 2009 | Jan | 90.2 | 91.1 | 92.6 | | 89.5 | 89.5 | 97.6 | 97.0 | 92.3 | 87.3 | 97.1 | 91.2 | 97.1 | 93.7 | 88.3 | 99.4 | 93.9 | 0.5 | 14.0 | 12.0 |
| | Feb | 90.8 | 91.7 | 92.6 | | 90.2 | 90.2 | 98.5 | 97.0 | 92.6 | 87.4 | 98.6 | 90.2 | 97.1 | 92.8 | 88.1 | 100.4 | 94.1 | 0.7 | 14.6 | 12.6 |
| | Mar | 91.4 | 92.0 | 93.1 | | 90.9 | 91.0 | 98.5 | 97.1 | 92.6 | 87.9 | 99.0 | 91.0 | 97.1 | 92.7 | 89.9 | 100.2 | 94.9 | 0.6 | 14.4 | 13.1 |
| | Apr | 91.9 | 92.5 | 94.1 | | 91.6 | 91.7 | 99.1 | 97.5 | 92.9 | 89.6 | 101.1 | 94.4 | 97.1 | 93.4 | 89.3 | 101.3 | 95.4 | 0.6 | 13.3 | 13.5 |
| | May | 93.6 | 94.2 | 95.4 | | 93.5 | 93.5 | 99.5 | 96.7 | 94.3 | 88.8 | 99.2 | 96.0 | 97.1 | 94.6 | 92.3 | 100.2 | 94.5 | 1.8 | 13.2 | 13.8 |
| | June | 95.3 | 95.3 | 96.6 | | 95.6 | 95.6 | 99.7 | 97.1 | 96.3 | 89.6 | 100.1 | 94.0 | 97.1 | 95.0 | 92.6 | 101.1 | 97.8 | 1.8 | 11.2 | 13.7 |
| | July | 97.3 | 96.8 | 98.4 | | 97.9 | 97.8 | 101.4 | 97.9 | 98.3 | 99.3 | 101.7 | 92.5 | 99.4 | 96.8 | 93.9 | 98.9 | 98.8 | 2.1 | 11.1 | 13.4 |
| | Aug | 98.4 | 97.3 | 97.7 | | 98.9 | 98.9 | 100.2 | 99.1 | 98.4 | 100.2 | 101.8 | 93.1 | 101.5 | 98.1 | 99.4 | 101.2 | 100.0 | 1.1 | 11.0 | 13.3 |
| | Sep | 98.9 | 98.1 | 98.5 | | 99.5 | 99.5 | 99.3 | 99.1 | 98.7 | 98.7 | 101.6 | 94.9 | 101.2 | 97.6 | 99.6 | 99.9 | 100.1 | 0.5 | 10.4 | 13.1 |
| | Oct | 99.4 | 98.9 | 99.1 | | 99.9 | 99.9 | 99.7 | 99.6 | 99.5 | 99.1 | 102.3 | 96.0 | 100.4 | 97.5 | 97.7 | 99.0 | 99.7 | 0.5 | 11.6 | 12.8 |
| | Nov | 100.0 | 100.0 | 100.0 | 100.0 | 100.0 | 100.0 | 100.0 | 100.0 | 100.0 | 100.0 | 100.0 | 100.0 | 100.0 | 100.0 | 100.0 | 100.0 | 100.0 | 0.7 | 12.4 | 12.6 |
| | Dec | 102.2 | 101.5 | 101.9 | 101.5 | 102.4 | 102.7 | 101.9 | 101.5 | 100.2 | 101.7 | 101.8 | 101.8 | 100.0 | 101.9 | 101.5 | 102.6 | 101.7 | 2.2 | 13.9 | 12.5 |
| 2010 | Jan | 103.1 | 102.1 | 102.6 | 101.7 | 103.7 | 103.9 | 102.3 | 102.4 | 100.6 | 103.0 | 103.0 | 103.0 | 99.6 | 103.0 | 103.1 | 106.7 | 103.3 | 1.0 | 14.4 | 12.6 |
| | Feb | 105.0 | 104.5 | 105.0 | 103.2 | 104.8 | 105.4 | 102.6 | 103.4 | 102.3 | 104.7 | 104.9 | 104.7 | 100.3 | 99.4 | 106.0 | 106.3 | 105.9 | 1.9 | 15.1 | 12.7 |

Table 2 Composite Consumer Price Index (Base November 2009 = 100)

| | All Items | All Items less Farm Produce. | All Items less Farm Produce. and Energy | Imported Food | Food | Food & Non Alcoholic Bev. | Alcoholic Beverage. Tobacco and Kola | Clothing and Footwear | Housing Water, Electricity, Gas and Other Fuel | Furnishings & Household Equipment Maintenance. | Health. | Transport | Communication | Recreation & Culture. | Education | Restaurant & Hotels | Miscellaneous Goods & Services | Month-on (%) | Year-on (%) | 12-month average (%) | |
|--|-----------|------------------------------|---|---------------|--------|---------------------------|--------------------------------------|-----------------------|--|--|---------|-----------|---------------|-----------------------|-----------|---------------------|--------------------------------|--------------|-------------|----------------------|------|
| Weights** | 1000 | 513.1 | 428.1 | 132.5 | 507.06 | 518 | 10.87 | 76.5 | 167.3 | 50.26 | 30 | 65.1 | 6.8 | 6.91 | 39.44 | 12.1 | 16.6 | | | | |
| Please note that the above weights are only expenditure weights which are still adjusted by population across 37 states. They should not be taken as the final weights in the computation of the CPI | | | | | | | | | | | | | | | | | | | | | |
| | | | | | | | | | | | | | | | | | | | | 6 | |
| | Mar | 104.9 | 104.1 | 104.6 | 103.0 | 105.3 | 105.3 | 104.3 | 104.5 | 102.2 | 105.7 | 105.3 | 104.8 | 100.6 | 103.3 | 105.5 | 105.6 | 104.4 | -0.1 | 14.8 | 12.8 |
| | Apr | 105.7 | 104.4 | 105.1 | 103.9 | 106.6 | 106.7 | 104.8 | 105.1 | 102.2 | 103.8 | 104.9 | 106.8 | 100.4 | 103.1 | 105.6 | 109.7 | 106.2 | 0.8 | 15.0 | 12.9 |
| | May | 105.7 | 105.2 | 106.5 | 104.9 | 105.7 | 106.2 | 103.8 | 105.9 | 102.1 | 102.6 | 104.8 | 106.3 | 100.2 | 103.3 | 108.6 | 110.1 | 107.2 | -0.04 | 12.9 | 12.9 |
| | Jun | 108.8 | 107.4 | 108.6 | 109.6 | 110.0 | 110.2 | 108.5 | 109.1 | 104.8 | 110.7 | 108.5 | 107.4 | 102.1 | 102.6 | 106.6 | 106.9 | 109.6 | 2.91 | 14.1 | 13.1 |
| | Jul | 109.9 | 107.7 | 108.8 | 109.3 | 111.6 | 112.0 | 109.6 | 110.3 | 105.1 | 109.0 | 110.3 | 107.5 | 102.6 | 103.0 | 105.7 | 105.0 | 110.7 | 1.08 | 13.0 | 13.3 |
| | Aug | 111.9 | 109.3 | 110.4 | 109.3 | 113.8 | 114.1 | 112.3 | 112.8 | 106.2 | 110.3 | 112.3 | 108.6 | 100.6 | 105.0 | 106.0 | 107.3 | 111.2 | 1.76 | 13.7 | 13.5 |
| | Sep | 112.4 | 110.7 | 111.7 | 113.6 | 114.0 | 113.5 | 109.0 | 112.4 | 109.9 | 112.1 | 112.0 | 112.2 | 101.8 | 108.4 | 108.4 | 107.1 | 111.7 | 0.46 | 13.6 | 13.8 |
| | Oct | 112.7 | 111.9 | 112.0 | 114.1 | 114.0 | 114.1 | 111.7 | 112.8 | 111.0 | 113.2 | 114.8 | 107.1 | 102.9 | 109.6 | 110.1 | 108.5 | 110.6 | 0.30 | 13.4 | 13.9 |
| | Nov | 112.8 | 111.7 | 111.3 | 115.1 | 114.4 | 114.3 | 112.2 | 112.0 | 112.6 | 113.1 | 111.1 | 111.7 | 102.0 | 107.8 | 107.7 | 108.2 | 112.8 | 0.04 | 12.8 | 13.9 |
| | Dec | 114.2 | 112.6 | 112.5 | 115.4 | 115.4 | 115.5 | 111.9 | 113.7 | 113.2 | 113.2 | 112.7 | 112.9 | 102.4 | 107.8 | 109.1 | 109.6 | 112.1 | 1.29 | 11.8 | 13.7 |
| 2011 | Jan | 115.6 | 114.5 | 113.0 | 96.0 | 114.3 | 118.7 | 110.6 | 114.4 | 113.9 | 113.5 | 111.3 | 109.2 | 103.6 | 108.3 | 110.2 | 110.5 | 113.2 | 1.2 | 12.1 | 13.5 |
| | Feb | 116.7 | 115.5 | 115.5 | 124.0 | 117.7 | 117.9 | 113.4 | 116.0 | 114.7 | 115.6 | 114.7 | 117.2 | 104.9 | 106.3 | 110.6 | 112.3 | 114.2 | 0.96 | 11.1 | 13.2 |
| | Mar | 118.3 | 117.5 | 117.5 | 119.4 | 118.1 | 118.2 | 112.7 | 116.5 | 116.0 | 115.9 | 117.5 | 115.5 | 105.1 | 107.4 | 111.0 | 112.2 | 112.8 | 1.37 | 12.8 | 13.0 |

Table 2 Composite Consumer Price Index (Base November 2009 = 100)

| | All Items | All Items less Farm Produce. | All Items less Farm Produce. and Energy | Imported Food | Food | Food & Non Alcoholic Bev. | Alcoholic Beverage, Tobacco and Kola | Clothing and Footwear | Housing Water, Electricity, Gas and Other Fuel | Furnishings & Household Equipment Maintenance. | Health. | Transport | Communication | Recreation & Culture. | Education | Restaurant & Hotels | Miscellaneous Goods & Services | Month-on (%) | Year-on (%) | 12-month average (%) | |
|--|-----------|------------------------------|---|---------------|--------|---------------------------|--------------------------------------|-----------------------|--|--|---------|-----------|---------------|-----------------------|-----------|---------------------|--------------------------------|--------------|-------------|----------------------|------|
| Weights** | 1000 | 513.1 | 428.1 | 132.5 | 507.06 | 518 | 10.87 | 76.5 | 167.3 | 50.26 | 30 | 65.1 | 6.8 | 6.91 | 39.44 | 12.1 | 16.6 | | | | |
| Please note that the above weights are only expenditure weights which are still adjusted by population across 37 states. They should not be taken as the final weights in the computation of the CPI | | | | | | | | | | | | | | | | | | | | | |
| | Apr | 117.7 | 117.9 | 117.9 | 119.1 | 119.0 | 118.0 | 114.5 | 116.2 | 121.0 | 115.4 | 117.2 | 114.8 | 105.1 | 107.1 | 111.4 | 113.3 | 114.7 | -0.54 | 11.3 | 12.7 |
| | May | 118.7 | 118.9 | 119.0 | 120.6 | 118.5 | 118.5 | 115.1 | 118.2 | 121.2 | 116.6 | 116.6 | 115.7 | 105.7 | 107.4 | 111.9 | 113.8 | 115.6 | 0.91 | 12.4 | 12.6 |
| | Jun | 119.9 | 119.8 | 119.8 | 111.9 | 120.1 | 119.5 | 114.2 | 118.0 | 121.6 | 116.3 | 119.9 | 118.5 | 105.6 | 107.9 | 112.2 | 114.3 | 117.9 | 0.97 | 10.2 | 12.3 |
| | Jul | 120.3 | 120.1 | 119.9 | 112.6 | 120.4 | 120.2 | 112.4 | 117.7 | 122.5 | 117.6 | 118.3 | 120.7 | 106.2 | 111.1 | 112.6 | 115.0 | 119.8 | 0.32 | 9.4 | 12.0 |
| | Aug | 122.3 | 121.2 | 121.1 | 116.0 | 123.7 | 123.4 | 116.4 | 118.7 | 124.5 | 120.0 | 120.4 | 121.9 | 106.4 | 109.5 | 112.9 | 115.1 | 121.5 | 1.67 | 9.3 | 11.6 |
| | Sep | 124.0 | 123.5 | 122.7 | 117.6 | 124.8 | 124.2 | 116.2 | 119.9 | 126.1 | 119.2 | 122.3 | 122.3 | 106.2 | 109.8 | 113.8 | 115.7 | 121.6 | 1.41 | 10.3 | 11.4 |
| | Oct | 124.6 | 124.8 | 124.0 | 117.0 | 125.0 | 124.3 | 117.6 | 120.6 | 128.5 | 119.5 | 121.8 | 122.2 | 106.6 | 117.0 | 114.0 | 116.6 | 122.0 | 0.49 | 10.5 | 11.1 |
| | Nov | 124.7 | 124.6 | 123.5 | 124.2 | 125.4 | 125.1 | 118.9 | 121.9 | 128.1 | 120.2 | 122.7 | 123.3 | 107.1 | 115.7 | 114.2 | 116.9 | 125.5 | 0.04 | 10.5 | 11.0 |
| | Dec | 126.0 | 124.8 | 123.6 | 125.3 | 128.1 | 127.8 | 119.0 | 122.3 | 131.9 | 119.9 | 122.8 | 128.7 | 106.5 | 113.3 | 114.6 | 118.9 | 122.7 | 1.06 | 10.3 | 10.8 |
| 2012 | Jan | 130.2 | 129.1 | 129.2 | 121.6 | 129.3 | 130.8 | 123.2 | 121.1 | 131.8 | 120.6 | 122.7 | 127.8 | 108.7 | 114.5 | 115.0 | 120.0 | 125.9 | 3.35 | 12.6 | 10.9 |
| | Feb | 130.5 | 129.3 | 129.4 | 121.6 | 129.1 | 129.1 | 123.2 | 121.1 | 131.8 | 120.6 | 122.7 | 127.9 | 108.7 | 114.5 | 115.1 | 120.0 | 125.9 | 0.28 | 11.9 | 11.0 |
| | Mar | 132.6 | 135.1 | 134.5 | 129.9 | 132.1 | 131.9 | 120.6 | 133.7 | 139.7 | 130.2 | 129.7 | 134.4 | 113.4 | 116.7 | 125.6 | 121.4 | 131.6 | 1.59 | 12.1 | 10.9 |
| | Apr | 132.8 | 135.2 | 134.7 | 131.3 | 132.3 | 132.1 | 121.3 | 134.1 | 139.5 | 130.7 | 130.1 | 134.6 | 114.0 | 117.6 | 125.0 | 121.9 | 132.0 | 0.13 | 12.9 | 11.1 |
| | May | 133.8 | 136.7 | 136.3 | 132.5 | 133.9 | 133.7 | 122.0 | 134.7 | 139.7 | 131.1 | 130.8 | 135.1 | 114.4 | 118.4 | 125.5 | 122.6 | 132.6 | 0.75 | 12.7 | 11.1 |
| | Jun | 135.3 | 138.0 | 136.2 | 132.6 | 134.5 | 134.3 | 122.5 | 134.8 | 146.5 | 131.3 | 131.1 | 135.5 | 114.8 | 118.5 | 125.7 | 123.1 | 132.9 | 1.15 | 12.1 | 11.3 |

Table 2 Composite Consumer Price Index (Base November 2009 = 100)

| | All Items | All Items less Farm Produce. | All Items less Farm Produce. and Energy | Imported Food | Food | Food & Non Alcoholic Bev. | Alcoholic Beverage, Tobacco and Kola | Clothing and Footwear | Housing Water, Electricity, Gas and Other Fuel | Furnishings & Household Equipment Maintenance. | Health. | Transport | Communication | Recreation & Culture. | Education | Restaurant & Hotels | Miscellaneous Goods & Services | Month-on (%) | Year-on (%) | 12-month average (%) |
|--|-----------|------------------------------|---|---------------|--------|---------------------------|--------------------------------------|-----------------------|--|--|---------|-----------|---------------|-----------------------|-----------|---------------------|--------------------------------|--------------|-------------|----------------------|
| Weights** | 1000 | 513.1 | 428.1 | 132.5 | 507.06 | 518 | 10.87 | 76.5 | 167.3 | 50.26 | 30 | 65.1 | 6.8 | 6.91 | 39.44 | 12.1 | 16.6 | | | |
| Please note that the above weights are only expenditure weights which are still adjusted by population across 37 states. They should not be taken as the final weights in the computation of the CPI | | | | | | | | | | | | | | | | | | | | |
| | | | | | | | | | | | | | | | | | | | 9 | |
| | Jul | 135.7 | 138.1 | 136.5 | 132.9 | 135.0 | 134.7 | 134.9 | 146.7 | 131.3 | 131.3 | 135.8 | 114.9 | 118.9 | 125.9 | 123.4 | 133.1 | 0.24 | 12.8 | 11.6 |
| | Aug | 136.6 | 139.0 | 137.1 | 134.2* | 135.9 | 135.7 | 135.6 | 147.8 | 132.0 | 132.0* | 136.6 | 115.2 | 119.4 | 126.4 | 124.4 | 133.7 | 0.67 | 11.7 | 11.8 |
| | Sep | 138.0 | 139.7 | 137.7 | 134.2 | 137.5 | 137.2 | 136.5 | 150.1 | 132.9 | 132.4 | 137.3 | 115.6 | 120.6 | 126.7 | 125.0 | 134.4 | 1.01 | 11.3 | 11.9 |
| | Oct | 139.2 | 140.3 | 138.1 | 135.3 | 138.8 | 136.6 | 124.5 | 137.5 | 151.5 | 133.5 | 133.1 | 138.5 | 116.6 | 121.4 | 128.1 | 125.4 | 0.88 | 11.7 | 11.9 |
| | Nov | 140.0 | 140.9 | 138.7 | 136.2 | 139.8 | 139.6 | 125.3 | 138.2 | 152.3 | 134.1 | 133.5 | 138.9 | 116.2 | 121.8 | 128.8 | 125.7 | 0.60 | 12.3 | 12.1 |
| | Dec | 141.1 | 141.8 | 139.6 | 137.6 | 141.2 | 140.9 | 126.1 | 139.1 | 153.2 | 134.4 | 133.9 | 140.2 | 116.3 | 122.1 | 129.1 | 126.1 | 0.75 | 12.0 | 12.2 |
| 2013 | Jan | 141.9 | 143.8 | 140.3 | 138.7 | 142.3 | 142.0 | 127.1 | 140.1 | 153.8 | 135.4 | 134.3 | 140.6 | 116.4 | 122.2 | 129.3 | 126.4 | 0.62 | 9.0 | 11.9 |
| | Feb | 143.0 | 143.8 | 140.5 | 139.1 | 143.3 | 143.0 | 128.1 | 141.3 | 155.2 | 136.4 | 135.5 | 141.9 | 116.9 | 123.3 | 130.2 | 127.5 | 0.75 | 9.5 | 11.7 |
| | Mar | 144.0 | 144.8 | 142.9 | 139.3 | 144.6 | 144.3 | 128.7 | 141.8 | 155.9 | 136.9 | 136.4 | 142.4 | 117.3 | 123.7 | 131.2 | 127.7 | 0.71 | 8.6 | 11.4 |
| | Apr | 144.8 | 144.5 | 142.3 | 139.9 | 145.6 | 145.3 | 129.4 | 142.8 | 156.3 | 137.6 | 137.3 | 143.2 | 117.4 | 124.5 | 131.7 | 128.1 | 0.55 | 9.1 | 11.1 |
| | May | 145.8 | 145.2 | 141.9 | 140.1 | 146.4 | 146.1 | 130.1 | 144.0 | 157.2 | 139.3 | 138.6 | 144.5 | 117.9 | 125.8 | 133.2 | 129.1 | 0.67 | 9.0 | 10.8 |
| | Jun | 146.6 | 145.5 | 142.2 | 141.4 | 147.5 | 147.1 | 130.7 | 144.6 | 158.0 | 139.9 | 139.4 | 145.0 | 118.1 | 126.3 | 133.3 | 129.7 | 0.59 | 8.4 | 10.4 |
| | Jul | 147.4 | 147.2 | 145.1 | 142.4 | 148.4 | 148.1 | 131.3 | 145.2 | 158.8 | 140.4 | 140.0 | 145.5 | 118.5 | 126.6 | 133.5 | 130.3 | 0.54 | 8.7 | 10.0 |
| | Aug | 147.8 | 149.1 | 146.3 | 143.2 | 149.2 | 148.8 | 131.6 | 145.3 | 158.5 | 140.5 | 140.0 | 145.6 | 118.6 | 126.7 | 133.8 | 130.5 | 0.25 | 8.2 | 9.8 |
| | Sep | 148.9 | 150.0 | 147.8 | 144.3 | 150.4 | 150.1 | 132.4 | 146.3 | 159.4 | 141.3 | 140.9 | 146.7 | 119.1 | 127.5 | 134.9 | 131.5 | 0.75 | 8.0 | 9.5 |
| | Oct | 150.0 | 150.9 | 148.6 | 145.5 | 151.6 | 151.3 | 133.4 | 147.5 | 160.3 | 142.3 | 142.0 | 147.8 | 120.0 | 128.5 | 136.0 | 132.6 | 0.75 | 7.8 | 9.2 |
| | Nov | 151.1 | 151.8 | 149.5 | 146.3 | 152.9 | 152.5 | 134.2 | 148.7 | 161.3 | 143.2 | 142.7 | 148.6 | 120.4 | 129.3 | 137.0 | 133.6 | 0.72 | 7.9 | 8.8 |
| | Dec | 152.3 | 153.0 | 150.8 | 147.4 | 154.3 | 153.9 | 134.7 | 149.8 | 162.2 | 144.1 | 143.5 | 149.6 | 120.9 | 130.1 | 137.9 | 134.4 | 0.78 | 8.0 | 8.5 |

Table 2 Composite Consumer Price Index (Base November 2009 = 100)

| | All Items | All Items less Farm Produce. | All Items less Farm Produce. and Energy | Imported Food | Food | Food & Non Alcoholic Bev. | Alcoholic Beverage, Tobacco and Kola | Clothing and Footwear | Housing Water, Electricity, Gas and Other Fuel | Furnishings & Household Equipment Maintenance. | Health. | Transport | Communication | Recreation & Culture. | Education | Restaurant & Hotels | Miscellaneous Goods & Services | Month-on (%) | Year-on (%) | 12-month average (%) | |
|--|-----------|------------------------------|---|---------------|--------|---------------------------|--------------------------------------|-----------------------|--|--|---------|-----------|---------------|-----------------------|-----------|---------------------|--------------------------------|--------------|-------------|----------------------|-----|
| Weights** | 1000 | 513.1 | 428.1 | 132.5 | 507.06 | 518 | 10.87 | 76.5 | 167.3 | 50.26 | 30 | 65.1 | 6.8 | 6.91 | 39.44 | 12.1 | 16.6 | | | | |
| Please note that the above weights are only expenditure weights which are still adjusted by population across 37 states. They should not be taken as the final weights in the computation of the CPI | | | | | | | | | | | | | | | | | | | | | |
| 2014 | Jan | 153.3 | 153.3 | 150.7 | 148.4 | 155.5 | 155.2 | 135.5 | 150.7 | 162.7 | 145.0 | 144.3 | 150.4 | 121.3 | 131.0 | 138.3 | 134.9 | 146.5 | 0.64 | 8.0 | 8.4 |
| | Feb | 154.0 | 154.1 | 151.8 | 149.1 | 156.5 | 156.1 | 136.0 | 151.4 | 163.3 | 145.5 | 145.0 | 151.0 | 121.6 | 132.0 | 138.7 | 135.3 | 146.9 | 0.50 | 7.7 | 8.3 |
| | Mar | 155.2 | 154.7 | 152.5 | 150.3 | 158.0 | 157.6 | 136.7 | 151.9 | 164.2 | 146.5 | 145.9 | 152.0 | 122.1 | 132.8 | 139.4 | 136.1 | 147.7 | 0.78 | 7.8 | 8.2 |
| | Apr | 156.2 | 155.3 | 153.1 | 151.1 | 159.3 | 158.9 | 137.5 | 152.7 | 164.9 | 147.0 | 146.3 | 152.6 | 122.6 | 133.5 | 139.9 | 136.9 | 148.4 | 0.6 | 7.9 | 8.1 |
| | May | 157.4 | 156.3 | 154.0 | 152.4 | 160.6 | 160.2 | 138.3 | 154.1 | 166.0 | 148.2 | 147.4 | 153.8 | 123.1 | 134.5 | 140.9 | 138.1 | 149.6 | 0.8 | 8.0 | 8.0 |
| | Jun | 158.6 | 157.4 | 155.0 | 153.4 | 161.9 | 161.5 | 139.3 | 155.3 | 167.3 | 149.3 | 148.4 | 154.8 | 123.7 | 135.3 | 141.3 | 139.2 | 150.7 | 0.8 | 8.2 | 8.0 |

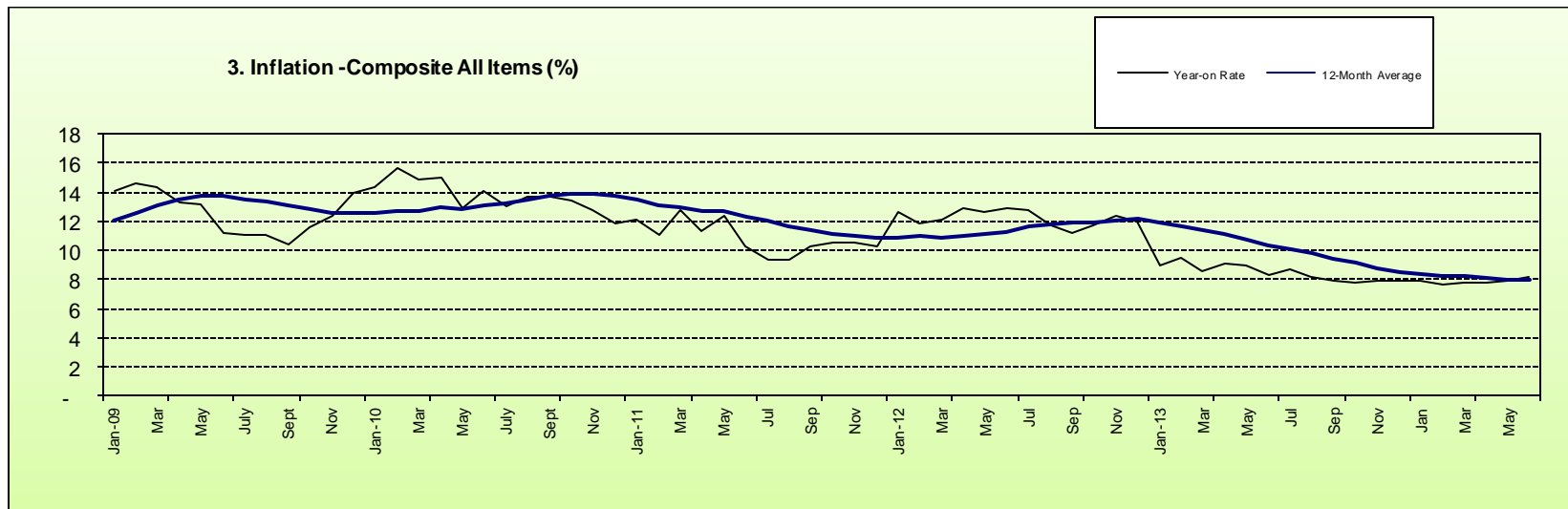


Table 3 Urban Consumer Price Index (Base November 2009 = 100)

| | | All Items | All Items less Farm Produce. | All Items less Farm Produce. and Energy | Imported Food | Food | Food & Non Alcoholic Bev. | Alcoholic Beverage. Tobacco and Kola | Clothing and Footwear | Housing Water, Electricity, Gas and Other Fuel | Furnishings & Household Equipment Maintenance. | Health. | Transport | Communication | Recreation & Culture. | Education | Restaurant & Hotels | Miscellaneous Goods & Services | Month-on (%) | Year-on (%) | 12-month average (%) |
|--|------|-----------|------------------------------|---|---------------|--------|---------------------------|--------------------------------------|-----------------------|--|--|---------|-----------|---------------|-----------------------|-----------|---------------------|--------------------------------|--------------|-------------|----------------------|
| Weights | | 1000 | 575.22 | 440.93 | 155.13 | 476.82 | 490.59 | 11.19 | 65.5 | 191.51 | 49.74 | 27.4 | 74.54 | 10.14 | 7.2 | 40.05 | 14.49 | 17.65 | | | |
| Please note that the above weights are only expenditure weights which are still adjusted by population across 37 states. They should not be taken as the final weights in the computation of the CPI | | | | | | | | | | | | | | | | | | | | | |
| 2009 | Jan | 92.8 | 96.6 | 97.8 | | 90.5 | 90.5 | 97.6 | 97.8 | 96.4 | 96.3 | 96.3 | 94.0 | 99.3 | 97.8 | 92.3 | 102.0 | 96.0 | 0.0 | 10.4 | 11.8 |
| | Feb | 93.6 | 96.3 | 97.6 | | 92.0 | 92.0 | 98.6 | 98.2 | 95.5 | 96.2 | 98.1 | 93.0 | 99.3 | 97.8 | 90.9 | 103.2 | 95.2 | 0.8 | 9.8 | 11.6 |
| | Mar | 93.9 | 96.5 | 98.0 | | 92.4 | 92.4 | 98.8 | 97.9 | 95.5 | 96.5 | 98.3 | 94.1 | 99.3 | 96.7 | 93.0 | 104.1 | 95.1 | 0.4 | 9.9 | 11.5 |
| | Apr | 94.3 | 97.4 | 98.8 | | 92.5 | 92.6 | 99.9 | 98.6 | 96.4 | 98.0 | 99.6 | 95.7 | 99.3 | 97.8 | 89.7 | 104.4 | 95.6 | 0.5 | 8.6 | 11.3 |
| | May | 95.7 | 98.2 | 98.7 | | 94.1 | 94.1 | 100.1 | 96.9 | 98.1 | 96.2 | 97.9 | 97.1 | 99.3 | 98.9 | 96.3 | 104.2 | 98.2 | 1.4 | 9.5 | 11.2 |
| | June | 97.2 | 98.8 | 99.7 | | 96.3 | 96.3 | 100.6 | 97.0 | 98.5 | 97.4 | 99.3 | 96.7 | 99.3 | 99.9 | 96.7 | 106.2 | 98.1 | 1.6 | 9.2 | 11.0 |
| | July | 98.9 | 99.5 | 100.3 | | 98.4 | 98.4 | 102.1 | 99.9 | 100.2 | 98.8 | 100.9 | 95.7 | 100.8 | 100.1 | 97.6 | 100.1 | 98.5 | 1.7 | 9.3 | 10.7 |
| | Aug | 99.6 | 99.7 | 99.4 | | 99.3 | 99.3 | 100.7 | 99.9 | 100.6 | 99.7 | 100.3 | 95.1 | 102.1 | 101.2 | 97.4 | 105.2 | 99.9 | 0.7 | 8.4 | 10.4 |
| | Sep | 99.8 | 99.5 | 99.2 | | 99.8 | 99.8 | 99.8 | 99.7 | 100.3 | 101.1 | 98.8 | 96.0 | 101.5 | 100.5 | 99.5 | 99.7 | 100.8 | 0.2 | 8.1 | 10.0 |
| | Oct | 99.8 | 99.9 | 99.3 | | 99.6 | 99.6 | 99.8 | 100.3 | 100.8 | 100.9 | 99.9 | 96.8 | 100.9 | 100.1 | 98.9 | 98.0 | 100.7 | 0.0 | 8.3 | 9.5 |
| | Nov | 100.0 | 100.0 | 100.0 | 100.0 | 100.0 | 100.0 | 100.0 | 100.0 | 100.0 | 100.0 | 100.0 | 100.0 | 100.0 | 100.0 | 100.0 | 100.0 | 100.0 | 0.2 | 8.8 | 9.3 |
| | Dec | 101.4 | 101.3 | 101.8 | 100.5 | 101.6 | 101.7 | 99.9 | 100.9 | 101.4 | 100.8 | 101.6 | 102.0 | 99.2 | 104.2 | 100.7 | 103.2 | 101.6 | 1.4 | 9.3 | 9.1 |
| 2010 | Jan | 102.6 | 102.5 | 102.7 | 101.1 | 102.8 | 102.8 | 100.7 | 103.1 | 102.6 | 101.9 | 102.4 | 103.5 | 99.7 | 105.8 | 102.5 | 108.3 | 102.8 | 1.2 | 10.5 | 9.1 |
| | Feb | 104.4 | 105.4 | 105.4 | 103.1 | 102.9 | 103.6 | 101.6 | 103.6 | 104.4 | 103.6 | 105.4 | 103.9 | 100.1 | 99.4 | 108.0 | 106.7 | 106.3 | 1.8 | 11.6 | 9.3 |
| | Mar | 106.0 | 105.7 | 105.9 | 103.5 | 106.1 | 105.9 | 103.8 | 105.9 | 104.8 | 106.1 | 106.8 | 108.1 | 100.9 | 107.1 | 106.8 | 107.5 | 106.1 | 1.5 | 12.9 | 9.6 |
| | Apr | 105.9 | 105.4 | 105.6 | 103.4 | 106.3 | 106.1 | 103.9 | 106.0 | 103.9 | 105.5 | 106.9 | 106.7 | 100.8 | 108.3 | 106.6 | 111.5 | 107.0 | -0.1 | 12.2 | 9.9 |
| | May | 103.8 | 103.7 | 104.9 | 104.5 | 103.8 | 104.7 | 102.0 | 104.7 | 99.2 | 103.0 | 104.1 | 105.9 | 101.2 | 105.0 | 105.7 | 109.3 | 104.8 | -1.9 | 8.5 | 9.8 |
| | Jun | 107.7 | 107.0 | 108.0 | 110.0 | 108.5 | 108.6 | 106.8 | 108.7 | 105.2 | 108.7 | 107.9 | 106.2 | 103.4 | 104.0 | 106.8 | 108.6 | 109.3 | 3.7 | 10.8 | 9.9 |
| | Jul | 109.1 | 107.9 | 108.4 | 109.1 | 110.4 | 110.6 | 109.2 | 110.4 | 103.9 | 108.4 | 111.6 | 109.3 | 104.0 | 102.8 | 106.7 | 106.4 | 110.6 | 1.3 | 10.3 | 10.0 |

Table 3 Urban Consumer Price Index (Base November 2009 = 100)

| | | All Items | All Items less Farm Produce. | All Items less Farm Produce. and Energy | Imported Food | Food | Food & Non Alcoholic Bev. | Alcoholic Beverage. Tobacco and Kola | Clothing and Footwear | Housing Water, Electricity. Gas and Other Fuel | Furnishings & Household Equipment Maintenance. | Health. | Transport | Communication | Recreation & Culture. | Education | Restaurant & Hotels | Miscellaneous Goods & Services | Month-on (%) | Year-on (%) | 12-month average (%) |
|--|-----|-----------|------------------------------|---|---------------|--------|---------------------------|--------------------------------------|-----------------------|--|--|---------|-----------|---------------|-----------------------|-----------|---------------------|--------------------------------|--------------|-------------|----------------------|
| Weights | | 1000 | 575.22 | 440.93 | 155.13 | 476.82 | 490.59 | 11.19 | 65.5 | 191.51 | 49.74 | 27.4 | 74.54 | 10.14 | 7.2 | 40.05 | 14.49 | 17.65 | | | |
| Please note that the above weights are only expenditure weights which are still adjusted by population across 37 states. They should not be taken as the final weights in the computation of the CPI | | | | | | | | | | | | | | | | | | | | | |
| | Aug | 110.5 | 109.0 | 109.9 | 111.0 | 112.8 | 112.9 | 110.0 | 112.1 | 103.0 | 110.7 | 113.0 | 110.0 | 100.9 | 106.4 | 108.1 | 111.6 | 111.7 | 1.3 | 10.9 | 10.2 |
| | Sep | 110.6 | 109.4 | 110.5 | 113.0 | 112.6 | 112.4 | 106.6 | 112.4 | 106.0 | 110.5 | 110.0 | 112.2 | 101.4 | 110.1 | 107.6 | 107.3 | 109.2 | 0.1 | 10.9 | 10.4 |
| | Oct | 111.2 | 110.0 | 110.1 | 114.3 | 113.5 | 113.5 | 109.6 | 111.6 | 110.7 | 109.4 | 110.8 | 105.8 | 101.4 | 109.0 | 108.4 | 106.0 | 110.8 | 0.5 | 11.5 | 10.7 |
| | Nov | 111.7 | 111.3 | 111.1 | 113.4 | 112.8 | 112.8 | 110.0 | 112.2 | 111.0 | 111.1 | 111.8 | 110.4 | 101.1 | 109.7 | 107.9 | 107.8 | 113.1 | 0.5 | 11.7 | 10.9 |
| | Dec | 112.2 | 111.2 | 111.0 | 113.5 | 113.4 | 113.4 | 109.7 | 113.8 | 111.8 | 111.5 | 112.9 | 111.7 | 100.8 | 109.2 | 109.3 | 111.3 | 112.7 | 0.4 | 10.7 | 11.0 |
| 2011 | Jan | 110.7 | 108.5 | 106.0 | 67.2 | 111.7 | 116.5 | 107.8 | 114.9 | 110.8 | 112.4 | 111.6 | 108.3 | 105.8 | 108.1 | 111.2 | 113.2 | 111.6 | -1.4 | 7.9 | 10.8 |
| | Feb | 114.2 | 114.1 | 114.4 | 117.6 | 115.5 | 115.2 | 110.2 | 115.1 | 115.5 | 114.4 | 118.6 | 111.6 | 101.9 | 103.7 | 111.7 | 114.9 | 114.6 | 3.2 | 9.4 | 10.6 |
| | Mar | 115.0 | 114.9 | 114.2 | 118.0 | 116.0 | 116.3 | 109.8 | 115.7 | 118.2 | 115.1 | 120.5 | 111.9 | 101.8 | 105.1 | 111.6 | 115.9 | 113.8 | 0.7 | 8.5 | 10.3 |
| | Apr | 115.5 | 116.3 | 116.1 | 114.9 | 116.4 | 115.5 | 112.3 | 116.3 | 116.1 | 114.8 | 117.8 | 112.2 | 102.5 | 106.1 | 111.6 | 115.1 | 115.5 | 0.5 | 9.1 | 10.0 |
| | May | 115.8 | 116.8 | 116.7 | 116.0 | 116.7 | 116.2 | 112.9 | 117.2 | 116.0 | 116.4 | 120.1 | 116.2 | 102.8 | 105.6 | 111.7 | 115.9 | 114.7 | 0.2 | 11.5 | 10.2 |
| | Jun | 116.6 | 116.6 | 116.3 | 112.4 | 118.0 | 117.2 | 112.1 | 117.2 | 116.3 | 115.4 | 121.1 | 116.5 | 102.0 | 106.5 | 111.7 | 116.8 | 114.7 | 0.7 | 8.3 | 10.0 |
| | Jul | 116.3 | 116.8 | 115.6 | 111.8 | 118.0 | 117.6 | 112.2 | 117.4 | 118.3 | 116.7 | 118.8 | 119.0 | 103.4 | 104.9 | 112.5 | 117.3 | 115.8 | -0.3 | 6.6 | 9.7 |
| | Aug | 118.3 | 118.7 | 117.8 | 113.4 | 119.9 | 119.1 | 113.8 | 117.9 | 119.9 | 119.7 | 121.1 | 122.1 | 103.4 | 107.9 | 112.6 | 116.1 | 116.9 | 1.7 | 7.1 | 9.4 |
| | Sep | 120.0 | 121.3 | 119.6 | 115.5 | 120.7 | 119.8 | 114.1 | 118.4 | 124.8 | 120.2 | 123.6 | 121.3 | 103.7 | 108.2 | 113.2 | 117.7 | 117.2 | 1.4 | 8.4 | 9.2 |
| | Oct | 119.9 | 121.2 | 119.1 | 115.5 | 120.9 | 120.0 | 114.6 | 119.1 | 125.6 | 120.3 | 121.7 | 121.3 | 104.3 | 111.1 | 113.2 | 118.8 | 116.7 | -0.1 | 7.8 | 8.9 |
| | Nov | 120.0 | 121.1 | 118.9 | 119.0 | 120.8 | 119.7 | 115.5 | 120.9 | 125.1 | 119.7 | 123.3 | 122.8 | 105.0 | 108.6 | 113.7 | 119.0 | 120.5 | 0.1 | 7.4 | 8.5 |
| | Dec | 122.3 | 122.0 | 119.6 | 121.1 | 124.5 | 123.8 | 115.2 | 120.2 | 128.0 | 119.2 | 122.1 | 128.2 | 104.6 | 107.9 | 114.6 | 121.1 | 117.4 | 2.0 | 9.0 | 8.4 |
| 2012 | Jan | 128.9 | 128.2 | 127.4 | 113.4 | 125.5 | 127.1 | 119.3 | 119.7 | 135.4 | 120.6 | 123.3 | 127.4 | 105.9 | 108.9 | 114.9 | 123.4 | 119.9 | 5.3 | 16.4 | 9.1 |
| | Feb | 129.2 | 128.4 | 127.5 | 113.5 | 126.3 | 126.2 | 119.3 | 119.7 | 135.5 | 120.6 | 123.3 | 127.5 | 105.9 | 108.9 | 114.9 | 123.4 | 119.9 | 0.3 | 13.1 | 9.4 |
| | Mar | 130.7 | 132.6 | 132.1 | 129.5 | 129.1 | 128.9 | 113.2 | 135.2 | 136.9 | 127.4 | 129.0 | 137.6 | 110.6 | 115.1 | 124.2 | 122.9 | 131.4 | 1.2 | 13.7 | 9.9 |
| | Apr | 131.1 | 133.0 | 132.6 | 130.7 | 129.4 | 129.2 | 114.6 | 136.3 | 136.9 | 128.1 | 129.4 | 137.6 | 111.1 | 116.4 | 124.4 | 123.1 | 132.3 | 0.3 | 13.4 | 10.3 |
| | May | 132.1 | 134.0 | 133.6 | 132.1 | 131.1 | 130.9 | 115.5 | 136.8 | 137.2 | 128.4 | 130.1 | 138.2 | 111.7 | 117.8 | 125.3 | 123.5 | 133.0 | 0.8 | 14.1 | 10.5 |
| | Jun | 134.1 | 135.8 | 134.0 | 132.1 | 131.4 | 131.3 | 116.1 | 137.0 | 146.5 | 128.3 | 130.4 | 138.3 | 112.1 | 117.6 | 125.5 | 123.7 | 133.4 | 1.5 | 15.0 | 11.1 |
| | Jul | 134.5 | 135.5 | 133.6 | 132.4 | 131.7 | 131.6 | 116.4 | 137.0 | 146.9 | 128.5 | 130.8 | 138.7 | 112.2 | 118.4 | 125.9 | 124.2 | 133.6 | 0.2 | 15.6 | 11.8 |

Table 3 Urban Consumer Price Index (Base November 2009 = 100)

| | | All Items | All Items less Farm Produce. | All Items less Farm Produce. and Energy | Imported Food | Food | Food & Non Alcoholic Bev. | Alcoholic Beverage. Tobacco and Kola | Clothing and Footwear | Housing Water, Electricity. Gas and Other Fuel | Furnishings & Household Equipment Maintenance. | Health. | Transport | Communication | Recreation & Culture. | Education | Restaurant & Hotels | Miscellaneous Goods & Services | Month-on (%) | Year-on (%) | 12-month average (%) |
|--|-----|-----------|------------------------------|---|---------------|--------|---------------------------|--------------------------------------|-----------------------|--|--|---------|-----------|---------------|-----------------------|-----------|---------------------|--------------------------------|--------------|-------------|----------------------|
| Weights | | 1000 | 575.22 | 440.93 | 155.13 | 476.82 | 490.59 | 11.19 | 65.5 | 191.51 | 49.74 | 27.4 | 74.54 | 10.14 | 7.2 | 40.05 | 14.49 | 17.65 | | | |
| Please note that the above weights are only expenditure weights which are still adjusted by population across 37 states. They should not be taken as the final weights in the computation of the CPI | | | | | | | | | | | | | | | | | | | | | |
| | Aug | 135.4 | 136.7 | 134.3 | 133.8* | 132.5 | 132.4* | 117.0 | 137.9 | 148.3 | 129.5 | 131.5 | 139.6 | 112.6 | 119.3 | 126.1 | 126.0 | 134.8 | 0.7 | 14.5* | 12.4 |
| | Sep | 137.0 | 137.7 | 135.4 | 133.9 | 134.2 | 134.0 | 117.3 | 138.9 | 151.1 | 130.3 | 132.3 | 140.4 | 113.3 | 121.0 | 126.6 | 126.2 | 136.1 | 1.2 | 14.2 | 12.9 |
| | Oct | 138.2 | 138.3 | 135.6 | 134.5 | 135.3 | 135.1 | 117.6 | 139.7 | 152.9 | 131.2 | 133.0 | 141.5 | 113.6 | 121.9 | 127.9 | 126.8 | 136.9 | 0.9 | 15.3 | 13.5 |
| | Nov | 139.0 | 138.9 | 136.1 | 134.5 | 136.2 | 136.0 | 118.1 | 140.1 | 154.2 | 131.8 | 133.3 | 142.1 | 113.7 | 122.8 | 128.6 | 127.2 | 137.0 | 0.6 | 15.8 | 14.2 |
| | Dec | 140.0 | 139.8 | 136.9 | 136.7 | 137.6 | 137.3 | 118.8 | 141.2 | 155.1 | 132.1 | 133.6 | 143.1 | 113.8 | 122.8 | 129.0 | 127.3 | 137.2 | 0.8 | 14.5 | 14.6 |
| 2013 | Jan | 140.8 | 142.3 | 137.9 | 137.8 | 138.6 | 138.4 | 120.0 | 141.8 | 155.4 | 132.4 | 134.0 | 143.6 | 113.9 | 122.9 | 129.4 | 127.5 | 137.6 | 0.5 | 9.2 | 14.0 |
| | Feb | 142.0 | 142.3 | 137.9 | 137.9 | 139.9 | 139.6 | 121.0 | 143.0 | 156.7 | 133.3 | 135.3 | 144.9 | 114.3 | 124.1 | 130.5 | 128.6 | 138.9 | 0.9 | 9.8 | 13.7 |
| | Mar | 142.8 | 142.0 | 139.3 | 138.5 | 140.7 | 140.5 | 121.7 | 144.0 | 157.5 | 134.2 | 136.3 | 145.9 | 114.9 | 124.8 | 131.5 | 129.1 | 140.0 | 0.6 | 9.3 | 13.3 |
| | Apr | 143.7 | 142.6 | 140.1 | 138.6 | 142.0 | 141.7 | 122.5 | 144.7 | 158.3 | 134.6 | 136.7 | 146.3 | 115.0 | 125.4 | 131.6 | 129.3 | 140.3 | 0.6 | 9.7 | 13.0 |
| | May | 144.5 | 142.7 | 138.7 | 139.0 | 142.7 | 142.5 | 122.9 | 145.8 | 158.8 | 135.6 | 137.8 | 147.3 | 115.5 | 126.3 | 132.8 | 130.4 | 141.6 | 0.6 | 9.4 | 12.6 |
| | Jun | 145.5 | 143.1 | 139.1 | 140.4 | 143.9 | 143.6 | 123.6 | 146.5 | 159.9 | 135.9 | 138.6 | 148.1 | 115.7 | 126.6 | 133.0 | 131.3 | 142.1 | 0.7 | 8.4 | 12.0 |
| | Jul | 146.3 | 145.4 | 142.9 | 141.5 | 145.0 | 144.7 | 123.9 | 147.2 | 160.8 | 136.5 | 139.2 | 148.9 | 116.1 | 127.2 | 133.2 | 131.7 | 142.4 | 0.6 | 8.8 | 11.4 |
| | Aug | 146.8 | 147.7 | 144.1 | 142.6 | 145.8 | 145.5 | 124.1 | 147.2 | 160.8 | 136.7 | 139.3 | 149.1 | 116.2 | 127.2 | 133.3 | 132.1 | 142.7 | 0.3 | 8.4 | 10.9 |
| | Sep | 147.9 | 147.7 | 145.3 | 143.7 | 147.1 | 146.8 | 125.3 | 148.5 | 161.7 | 137.6 | 140.2 | 150.2 | 116.8 | 128.4 | 134.5 | 133.2 | 143.7 | 0.8 | 8.0 | 10.4 |
| | Oct | 149.1 | 148.6 | 146.0 | 145.0 | 148.3 | 148.0 | 126.2 | 149.8 | 162.6 | 138.5 | 141.4 | 151.4 | 117.7 | 129.5 | 135.6 | 134.4 | 145.0 | 0.8 | 7.9 | 9.8 |
| | Nov | 150.2 | 149.4 | 146.7 | 145.8 | 149.6 | 149.3 | 127.0 | 151.0 | 163.8 | 139.0 | 142.0 | 152.4 | 118.1 | 130.3 | 136.7 | 135.4 | 145.9 | 0.8 | 8.1 | 9.2 |
| | Dec | 151.4 | 150.4 | 147.7 | 146.7 | 151.0 | 150.6 | 127.6 | 152.2 | 164.9 | 139.8 | 142.7 | 153.4 | 118.7 | 131.1 | 137.7 | 135.9 | 146.8 | 0.8 | 8.1 | 8.8 |
| 2014 | Jan | 152.2 | 150.7 | 147.6 | 147.7 | 152.3 | 151.9 | 128.4 | 153.0 | 165.2 | 140.7 | 143.4 | 153.6 | 118.7 | 131.7 | 137.8 | 136.1 | 147.1 | 0.6 | 8.2 | 8.7 |
| | Feb | 153.0 | 151.6 | 148.9 | 148.6 | 153.2 | 152.8 | 128.9 | 153.6 | 165.8 | 141.1 | 144.4 | 154.4 | 119.2 | 132.4 | 138.4 | 136.5 | 147.5 | 0.5 | 7.8 | 8.5 |
| | Mar | 154.2 | 152.1 | 149.7 | 149.8 | 154.7 | 154.4 | 129.6 | 154.1 | 166.7 | 142.1 | 145.2 | 155.3 | 119.9 | 133.6 | 139.2 | 137.4 | 148.3 | 0.8 | 7.9 | 8.4 |
| | Apr | 155.1 | 152.6 | 150.0 | 150.7 | 156.1 | 155.7 | 130.5 | 154.7 | 167.4 | 142.7 | 145.5 | 155.7 | 120.2 | 134.5 | 139.8 | 138.4 | 149.5 | 0.6 | 7.9 | 8.2 |
| | May | 156.4 | 153.6 | 150.8 | 151.8 | 157.4 | 157.0 | 131.1 | 156.1 | 168.5 | 143.8 | 146.5 | 156.9 | 120.7 | 135.4 | 140.7 | 139.6 | 150.7 | 0.8 | 8.2 | 8.2 |

Table 3 Urban Consumer Price Index (Base November 2009 = 100)

| | All Items | All Items less Farm Produce. | All Items less Farm Produce. and Energy | Imported Food | Food | Food & Non Alcoholic Bev. | Alcoholic Beverage, Tobacco and Kola | Clothing and Footwear | Housing Water, Electricity, Gas and Other Fuel | Furnishings & Household Equipment Maintenance. | Health. | Transport | Communication | Recreation & Culture. | Education | Restaurant & Hotels | Miscellaneous Goods & Services | Month-on (%) | Year-on (%) | 12-month average (%) | |
|--|-----------|------------------------------|---|---------------|--------|---------------------------|--------------------------------------|-----------------------|--|--|---------|-----------|---------------|-----------------------|-----------|---------------------|--------------------------------|--------------|-------------|----------------------|-----|
| Weights | 1000 | 575.22 | 440.93 | 155.13 | 476.82 | 490.59 | 11.19 | 65.5 | 191.51 | 49.74 | 27.4 | 74.54 | 10.14 | 7.2 | 40.05 | 14.49 | 17.65 | | | | |
| Please note that the above weights are only expenditure weights which are still adjusted by population across 37 states. They should not be taken as the final weights in the computation of the CPI | | | | | | | | | | | | | | | | | | | | | |
| | Jun | 157.6 | 154.6 | 151.8 | 152.8 | 158.8 | 158.3 | 132.3 | 157.5 | 169.8 | 144.9 | 147.8 | 158.0 | 121.3 | 136.2 | 141.3 | 140.8 | 151.8 | 0.8 | 8.4 | 8.1 |

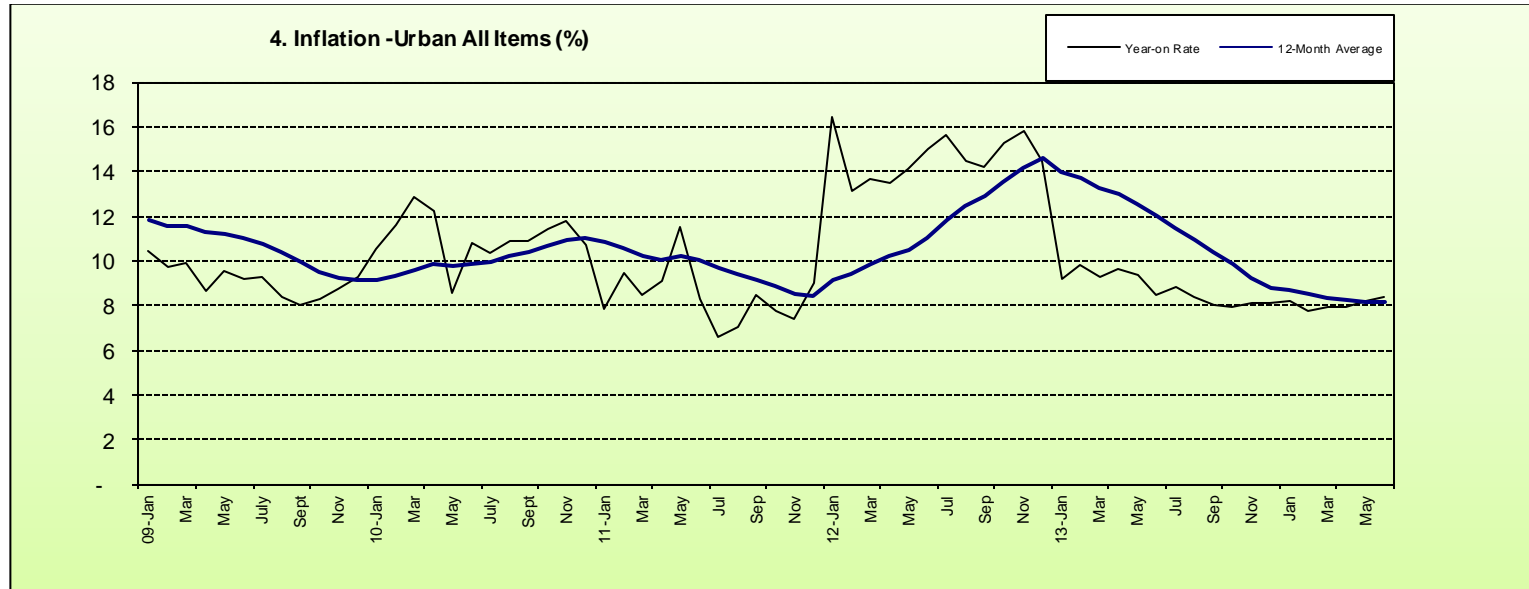


Table 4 Rural Consumer Price Index (Base November 2009 = 100)

| | | All Items | All Items less Farm Produce. | All Items less Farm Produce. and Energy | Imported Food | Food | Food & Non Alcoholic Bev. | Alcoholic Beverage. Tobacco and Kola | Clothing and Footwear | Housing Water, Electricity. Gas and Other Fuel | Furnishings & Household Equipment Maintenance. | Health. | Transport | Communication | Recreation & Culture. | Education | Restaurant & Hotels | Miscellaneous Goods & Services | Month-on (%) | Year-on (%) | 12-month average (%) |
|---------|------|-----------|------------------------------|---|---------------|-------|---------------------------|--------------------------------------|-----------------------|--|--|---------|-----------|---------------|-----------------------|-----------|---------------------|--------------------------------|--------------|-------------|----------------------|
| Weights | | 1000.0 | 503.1 | 417.4 | 113.7 | 532.3 | 540.9 | 10.6 | 85.7 | 147.2 | 50.7 | 32.2 | 57.2 | 4.0 | 6.7 | 38.9 | 10.1 | 15.8 | | | |
| 2009 | Jan | 88.9 | 88.5 | 90.0 | | 89.1 | 89.1 | 97.5 | 96.2 | 87.1 | 81.7 | 97.9 | 86.6 | 95.2 | 91.2 | 84.5 | 97.8 | 92.1 | 0.8 | 15.9 | 12.1 |
| | Feb | 89.5 | 89.5 | 90.2 | | 89.6 | 89.6 | 98.3 | 95.7 | 89.0 | 81.9 | 99.0 | 85.6 | 95.2 | 89.7 | 85.4 | 98.8 | 93.1 | 0.7 | 17.2 | 13.1 |
| | Mar | 90.2 | 89.8 | 90.8 | | 90.5 | 90.5 | 98.0 | 96.1 | 88.8 | 82.5 | 99.6 | 85.7 | 95.2 | 90.2 | 87.0 | 97.9 | 94.7 | 0.7 | 16.7 | 13.9 |
| | Apr | 90.7 | 90.2 | 91.7 | | 91.3 | 91.3 | 98.0 | 96.2 | 88.5 | 84.4 | 102.4 | 92.0 | 95.2 | 90.8 | 88.9 | 99.5 | 95.3 | 0.6 | 15.7 | 14.6 |
| | May | 92.6 | 92.3 | 93.8 | | 93.3 | 93.3 | 98.8 | 96.5 | 89.7 | 84.2 | 100.2 | 94.0 | 95.2 | 91.9 | 88.4 | 98.0 | 91.3 | 2.1 | 15.1 | 15.1 |
| | June | 94.4 | 93.7 | 95.1 | | 95.4 | 95.3 | 98.6 | 97.1 | 93.4 | 84.8 | 100.8 | 89.6 | 95.2 | 92.1 | 88.6 | 98.2 | 97.5 | 1.9 | 12.2 | 15.1 |
| | July | 96.5 | 95.5 | 97.5 | | 97.7 | 97.7 | 100.4 | 95.7 | 95.9 | 99.6 | 102.5 | 87.2 | 98.3 | 94.7 | 90.4 | 98.3 | 99.0 | 2.3 | 12.0 | 14.8 |
| | Aug | 97.8 | 96.1 | 96.9 | | 98.8 | 98.7 | 99.6 | 98.3 | 95.6 | 100.6 | 103.0 | 89.9 | 100.9 | 96.2 | 101.3 | 98.9 | 100.1 | 1.3 | 12.4 | 14.8 |
| | Sep | 98.5 | 97.4 | 98.2 | | 99.4 | 99.3 | 98.6 | 98.4 | 96.8 | 97.2 | 103.9 | 93.2 | 100.9 | 95.8 | 99.8 | 100.1 | 99.6 | 0.7 | 11.5 | 14.7 |
| | Oct | 99.2 | 98.4 | 99.0 | | 100.0 | 100.0 | 99.5 | 98.9 | 97.9 | 98.0 | 104.4 | 94.6 | 100.0 | 96.0 | 96.6 | 99.6 | 98.9 | 0.7 | 13.2 | 14.5 |
| | Nov | 100.0 | 100.0 | 100.0 | 100.0 | 100.0 | 100.0 | 100.0 | 100.0 | 100.0 | 100.0 | 100.0 | 100.0 | 100.0 | 100.0 | 100.0 | 100.0 | 100.0 | 0.8 | 14.2 | 14.3 |
| | Dec | 102.8 | 101.7 | 102.1 | 102.3 | 103.1 | 103.5 | 103.5 | 102.0 | 99.2 | 102.4 | 102.0 | 101.6 | 100.6 | 99.9 | 102.1 | 102.0 | 101.9 | 2.8 | 16.6 | 14.3 |
| 2010 | Jan | 103.6 | 101.9 | 102.4 | 102.2 | 104.4 | 104.9 | 103.6 | 101.8 | 98.9 | 103.9 | 103.5 | 102.7 | 99.5 | 100.7 | 103.6 | 105.5 | 103.7 | 0.8 | 16.5 | 14.4 |
| | Feb | 105.6 | 103.8 | 104.7 | 103.3 | 106.4 | 106.9 | 103.5 | 103.3 | 100.6 | 105.5 | 104.5 | 105.3 | 100.5 | 99.5 | 104.3 | 106.0 | 105.6 | 1.9 | 17.9 | 14.5 |
| | Mar | 104.0 | 102.8 | 103.5 | 102.6 | 104.6 | 104.9 | 104.7 | 103.3 | 100.0 | 105.3 | 104.0 | 102.1 | 100.4 | 100.1 | 104.4 | 104.0 | 103.0 | -1.5 | 15.3 | 14.4 |
| | Apr | 105.6 | 103.6 | 104.7 | 106.6 | 106.8 | 107.2 | 105.6 | 104.3 | 100.8 | 102.3 | 103.3 | 106.8 | 100.0 | 98.7 | 104.7 | 108.2 | 105.5 | 1.5 | 16.4 | 14.5 |
| | May | 107.2 | 106.5 | 107.9 | 105.4 | 107.2 | 107.5 | 105.3 | 106.8 | 104.6 | 102.3 | 105.4 | 106.6 | 99.4 | 101.8 | 111.0 | 110.7 | 109.1 | 1.6 | 15.8 | 14.5 |
| | Jun | 109.6 | 107.8 | 109.2 | 109.2 | 111.2 | 111.5 | 109.9 | 109.4 | 104.4 | 112.4 | 108.9 | 108.4 | 101.0 | 101.5 | 106.4 | 105.4 | 109.9 | 2.2 | 16.1 | 14.9 |
| | Jul | 110.7 | 107.6 | 109.2 | 109.5 | 112.6 | 113.2 | 109.9 | 110.2 | 106.2 | 109.6 | 109.2 | 105.9 | 101.4 | 103.1 | 104.9 | 103.9 | 110.7 | 0.9 | 14.6 | 15.1 |
| | Aug | 113.0 | 109.6 | 110.8 | 111.4 | 114.7 | 115.2 | 114.2 | 113.4 | 108.9 | 109.9 | 111.8 | 107.4 | 100.4 | 103.9 | 104.3 | 103.7 | 110.7 | 2.1 | 15.6 | 15.3 |
| | Sep | 113.8 | 111.7 | 112.7 | 114.1 | 115.1 | 114.5 | 110.9 | 112.4 | 113.1 | 113.5 | 113.6 | 112.2 | 102.2 | 106.9 | 109.0 | 107.0 | 113.8 | 0.7 | 15.6 | 15.7 |
| | Oct | 114.0 | 113.5 | 113.6 | 113.9 | 114.4 | 114.5 | 113.5 | 113.9 | 111.2 | 116.4 | 118.1 | 108.1 | 104.1 | 110.0 | 111.5 | 110.6 | 110.5 | 0.1 | 15.0 | 15.8 |
| | Nov | 113.6 | 112.1 | 111.5 | 116.5 | 115.7 | 115.4 | 114.0 | 111.8 | 113.9 | 114.8 | 110.5 | 112.8 | 102.7 | 106.2 | 107.5 | 108.5 | 112.6 | -0.3 | 13.6 | 15.7 |

Table 4 Rural Consumer Price Index (Base November 2009 = 100)

| | | All Items | All Items less Farm Produce. | All Items less Farm Produce. and Energy | Imported Food | Food | Food & Non Alcoholic Bev. | Alcoholic Beverage. Tobacco and Kola | Clothing and Footwear | Housing Water, Electricity. Gas and Other Fuel | Furnishings & Household Equipment Maintenance. | Health. | Transport | Communication | Recreation & Culture. | Education | Restaurant & Hotels | Miscellaneous Goods & Services | Month-on (%) | Year-on (%) | 12-month average (%) |
|---------|-------|-----------|------------------------------|---|---------------|-------|---------------------------|--------------------------------------|-----------------------|--|--|---------|-----------|---------------|-----------------------|-----------|---------------------|--------------------------------|--------------|-------------|----------------------|
| Weights | | 1000.0 | 503.1 | 417.4 | 113.7 | 532.3 | 540.9 | 10.6 | 85.7 | 147.2 | 50.7 | 32.2 | 57.2 | 4.0 | 6.7 | 38.9 | 10.1 | 15.8 | | | |
| 2011 | Dec | 115.9 | 113.8 | 113.7 | 117.0 | 117.1 | 117.2 | 113.7 | 113.6 | 114.3 | 114.7 | 112.6 | 114.0 | 103.6 | 106.6 | 109.0 | 108.2 | 111.5 | 2.0 | 12.7 | 15.4 |
| | Jan | 119.7 | 119.5 | 118.9 | 120.1 | 116.5 | 120.5 | 113.0 | 114.0 | 116.4 | 114.5 | 111.1 | 110.0 | 101.8 | 108.5 | 109.4 | 108.2 | 114.5 | 3.3 | 15.6 | 15.3 |
| | Feb | 118.8 | 116.7 | 116.4 | 129.4 | 119.4 | 120.2 | 116.1 | 116.8 | 114.1 | 116.6 | 111.4 | 121.9 | 107.4 | 108.4 | 109.7 | 110.1 | 113.8 | -0.8 | 12.5 | 14.9 |
| | Mar | 121.1 | 119.6 | 120.2 | 120.6 | 119.9 | 119.8 | 115.2 | 117.3 | 114.2 | 116.6 | 115.0 | 118.4 | 107.8 | 109.2 | 110.6 | 109.1 | 111.9 | 1.9 | 16.4 | 15.0 |
| | Apr | 119.4 | 119.2 | 119.4 | 122.6 | 121.1 | 120.10 | 116.4 | 116.1 | 125.1 | 116.0 | 116.7 | 116.9 | 107.2 | 107.8 | 111.2 | 111.9 | 114.1 | -1.3 | 13.1 | 14.7 |
| | May | 121.2 | 120.6 | 120.8 | 124.4 | 120.1 | 120.40 | 116.9 | 119.0 | 125.5 | 116.7 | 113.8 | 115.4 | 108.1 | 108.8 | 112.1 | 112.0 | 116.4 | 1.5 | 13.0 | 14.5 |
| | Jun | 122.6 | 122.4 | 122.8 | 111.5 | 121.9 | 121.49 | 116.0 | 118.6 | 126.0 | 117.1 | 118.8 | 120.1 | 108.7 | 109.2 | 112.6 | 112.1 | 120.6 | 1.1 | 11.8 | 14.1 |
| | Jul | 123.6 | 122.8 | 123.4 | 113.3 | 122.4 | 122.45 | 112.5 | 117.9 | 126.0 | 118.2 | 117.9 | 122.1 | 108.5 | 116.2 | 112.8 | 113.1 | 123.2 | 0.8 | 11.7 | 13.8 |
| | Aug | 125.6 | 123.3 | 123.8 | 118.1 | 126.9 | 127.0 | 118.6 | 119.4 | 128.4 | 120.1 | 119.9 | 121.8 | 108.8 | 110.9 | 113.2 | 114.2 | 125.4 | 1.6 | 11.1 | 13.5 |
| | Sep | 127.4 | 125.3 | 125.3 | 119.4 | 128.2 | 128.0 | 118.0 | 121.2 | 127.2 | 118.4 | 121.3 | 123.1 | 108.3 | 111.0 | 114.2 | 114.0 | 125.2 | 1.4 | 11.9 | 13.2 |
| | Oct | 128.6 | 127.8 | 128.0 | 118.1 | 128.4 | 127.9 | 120.1 | 121.8 | 131.0 | 118.8 | 121.8 | 123.0 | 108.6 | 122.1 | 114.6 | 114.8 | 126.4 | 0.9 | 12.8 | 13.0 |
| | Nov | 128.6 | 127.4 | 127.3 | 128.6 | 129.1 | 129.6 | 121.8 | 122.6 | 130.5 | 120.7 | 122.2 | 123.7 | 108.9 | 121.6 | 114.6 | 115.1 | 129.7 | 0.0 | 13.1 | 13.0 |
| Dec | 129.0 | 127.1 | 127.0 | 128.8 | 131.1 | 131.1 | 122.2 | 124.1 | 135.1 | 120.6 | 123.4 | 129.2 | 108.1 | 117.9 | 114.6 | 117.0 | 127.1 | 0.3 | 11.3 | 12.8 | |
| 2012 | Jan | 131.3 | 129.9 | 130.7 | 128.4 | 132.4 | 134.0 | 126.4 | 122.3 | 128.7 | 120.6 | 122.2 | 128.2 | 111.0 | 119.2 | 115.2 | 117.2 | 130.8 | 1.8 | 9.7 | 12.3 |
| | Feb | 131.6 | 130.0 | 130.9 | 128.4 | 131.8 | 131.7 | 126.4 | 122.3 | 128.8 | 120.6 | 122.2 | 128.2 | 111.0 | 119.2 | 115.2 | 117.2 | 130.8 | 0.3 | 10.9 | 12.2 |
| | Mar | 134.4 | 137.1 | 136.5 | 130.3 | 134.9 | 134.7 | 127.4 | 132.3 | 142.7 | 133.2 | 130.2 | 130.0 | 114.6 | 117.9 | 126.7 | 120.2 | 131.7 | 2.1 | 11.0 | 11.8 |
| | Apr | 134.4 | 137.0 | 136.5 | 131.8 | 135.0 | 134.8 | 127.7 | 132.0 | 142.3 | 133.6 | 130.7 | 130.3 | 115.1 | 118.3 | 125.5 | 121.0 | 131.8 | 0.01 | 12.5 | 11.7 |
| | May | 135.4 | 138.9 | 138.5 | 132.9 | 136.5 | 136.3 | 128.1 | 132.6 | 142.6 | 133.9 | 131.3 | 130.7 | 115.3 | 118.8 | 125.7 | 121.9 | 132.2 | 0.74 | 11.7 | 11.6 |
| | Jun | 136.5 | 139.8 | 138.1 | 133.0 | 137.4 | 137.2 | 128.5 | 132.6 | 146.3 | 134.3 | 131.6 | 131.3 | 115.7 | 119.0 | 125.9 | 122.6 | 132.5 | 0.83 | 11.4 | 11.6 |
| | Jul | 136.9 | 140.4 | 138.9 | 133.3 | 138.0 | 137.7 | 129.0 | 132.9 | 146.4 | 134.2 | 131.6 | 131.6 | 115.8 | 119.1 | 125.8 | 122.9 | 132.7 | 0.25 | 10.7 | 11.5 |
| | Aug | 137.8 | 140.9* | 139.4 | 134.5 | 139.1 | 138.9 | 129.4 | 133.5 | 147.2 | 134.7 | 132.2* | 132.1 | 116.0 | 119.3 | 126.6 | 123.0 | 132.8 | 0.65* | 9.7 | 11.4 |
| | Sep | 139.0 | 141.3 | 139.6 | 134.4 | 140.6 | 140.3 | 130.0 | 134.2 | 148.9 | 135.7 | 132.4 | 132.9 | 116.2 | 120.0 | 126.8 | 124.0 | 132.9 | 0.89 | 9.1 | 11.1 |
| | Oct | 140.2 | 141.9 | 140.1 | 136.0 | 142.0 | 141.8 | 131.0 | 135.5 | 149.9 | 136.0 | 133.0 | 134.0 | 116.6 | 120.7 | 128.2 | 124.3 | 134.0 | 0.88 | 9.1 | 10.8 |
| | Nov | 141.1 | 142.5 | 141.0 | 137.7 | 143.2 | 142.9 | 132.0 | 136.3 | 150.3 | 136.7 | 133.7 | 134.2 | 116.8 | 120.8 | 129.0 | 124.5 | 134.5 | 0.63 | 9.8 | 10.5 |

Table 4 Rural Consumer Price Index (Base November 2009 = 100)

| | | All Items | All Items less Farm Produce. | All Items less Farm Produce. and Energy | Imported Food | Food | Food & Non Alcoholic Bev. | Alcoholic Beverage. Tobacco and Kola | Clothing and Footwear | Housing Water, Electricity. Gas and Other Fuel | Furnishings & Household Equipment Maintenance. | Health. | Transport | Communication | Recreation & Culture. | Education | Restaurant & Hotels | Miscellaneous Goods & Services | Month-on (%) | Year-on (%) | 12-month average (%) |
|------|---------|-----------|------------------------------|---|---------------|-------|---------------------------|--------------------------------------|-----------------------|--|--|---------|-----------|---------------|-----------------------|-----------|---------------------|--------------------------------|--------------|-------------|----------------------|
| | Weights | 1000.0 | 503.1 | 417.4 | 113.7 | 532.3 | 540.9 | 10.6 | 85.7 | 147.2 | 50.7 | 32.2 | 57.2 | 4.0 | 6.7 | 38.9 | 10.1 | 15.8 | | | |
| | Dec | 142.1 | 143.5 | 141.9 | 138.3 | 144.5 | 144.2 | 132.8 | 137.1 | 151.1 | 136.9 | 134.1 | 135.7 | 117.0 | 121.2 | 129.1 | 125.2 | 135.0 | 0.73 | 10.2 | 10.5 |
| 2013 | Jan | 143.2 | 144.9 | 142.4 | 139.5 | 145.7 | 145.4 | 133.6 | 138.4 | 152.0 | 138.5 | 134.5 | 136.1 | 117.1 | 121.4 | 129.2 | 125.6 | 135.2 | 0.73 | 9.1 | 10.4 |
| | Feb | 144.1 | 144.9 | 142.7 | 140.1 | 146.4 | 146.1 | 134.7 | 139.7 | 153.4 | 139.7 | 135.6 | 137.3 | 117.6 | 122.4 | 129.9 | 126.6 | 136.2 | 0.65 | 9.5 | 10.3 |
| | Mar | 145.3 | 147.1 | 145.9 | 140.0 | 148.2 | 147.9 | 135.4 | 139.8 | 153.9 | 139.8 | 136.5 | 137.5 | 117.9 | 122.6 | 131.0 | 126.5 | 137.7 | 0.82 | 8.1 | 10.0 |
| | Apr | 146.4 | 146.5 | 144.4 | 140.5 | 149.2 | 148.9 | 136.2 | 141.2 | 154.7 | 142.2 | 137.9 | 139.0 | 118.0 | 124.5 | 132.8 | 127.3 | 139.1 | 0.76 | 8.9 | 9.7 |
| | May | 147.1 | 147.2 | 144.5 | 140.9 | 149.8 | 149.5 | 137.1 | 142.3 | 155.3 | 143.0 | 139.3 | 139.9 | 118.4 | 125.2 | 133.5 | 128.1 | 139.9 | 0.50 | 8.6 | 9.5 |
| | Jun | 147.9 | 147.6 | 144.8 | 142.2 | 150.8 | 150.5 | 137.5 | 142.7 | 155.9 | 143.9 | 140.0 | 140.2 | 118.7 | 125.8 | 133.6 | 128.4 | 140.3 | 0.54 | 8.3 | 9.2 |
| | Jul | 148.6 | 148.8 | 146.9 | 143.2 | 151.7 | 151.4 | 138.4 | 143.4 | 156.6 | 144.2 | 140.6 | 140.6 | 119.0 | 126.0 | 133.8 | 129.2 | 140.7 | 0.50 | 8.6 | 9.1 |
| | Aug | 148.9 | 150.2 | 148.2 | 143.7 | 152.3 | 152.0 | 138.8 | 143.5 | 156.2 | 144.3 | 140.7 | 140.6 | 119.1 | 126.1 | 134.1 | 129.2 | 140.8 | 0.20 | 8.1 | 8.9 |
| | Sep | 150.0 | 151.9 | 149.9 | 144.7 | 153.6 | 153.3 | 139.5 | 144.3 | 157.1 | 145.0 | 141.4 | 141.5 | 119.6 | 126.5 | 135.2 | 130.2 | 141.6 | 0.74 | 8.0 | 8.8 |
| | Oct | 151.1 | 152.8 | 150.8 | 145.9 | 154.8 | 154.5 | 140.7 | 145.4 | 157.9 | 146.2 | 142.5 | 142.5 | 120.5 | 127.4 | 136.4 | 131.2 | 142.8 | 0.73 | 7.8 | 8.7 |
| | Nov | 152.2 | 153.8 | 151.9 | 146.8 | 156.0 | 155.7 | 141.3 | 146.4 | 158.8 | 147.3 | 143.2 | 143.2 | 120.9 | 128.2 | 137.2 | 132.1 | 144.1 | 0.68 | 7.8 | 8.6 |
| | Dec | 153.3 | 155.2 | 153.4 | 148.0 | 157.4 | 157.0 | 142.0 | 147.5 | 159.5 | 148.5 | 144.1 | 144.1 | 121.3 | 129.0 | 138.0 | 133.3 | 145.2 | 0.76 | 7.9 | 8.4 |
| 2014 | Jan | 154.4 | 155.5 | 153.3 | 149.0 | 158.6 | 158.3 | 142.7 | 148.4 | 160.2 | 149.2 | 144.9 | 145.3 | 122.1 | 130.2 | 138.7 | 134.0 | 146.1 | 0.68 | 7.8 | 8.3 |
| | Feb | 155.1 | 156.1 | 154.2 | 149.6 | 159.5 | 159.2 | 143.2 | 149.2 | 160.7 | 149.9 | 145.4 | 145.9 | 122.3 | 131.3 | 138.9 | 134.4 | 146.4 | 0.49 | 7.7 | 8.1 |
| | Mar | 156.4 | 156.8 | 154.9 | 150.7 | 161.2 | 160.8 | 144.0 | 149.9 | 161.6 | 150.8 | 146.4 | 146.9 | 122.8 | 131.8 | 139.5 | 135.2 | 147.2 | 0.81 | 7.6 | 8.1 |
| | Apr | 157.3 | 157.6 | 155.7 | 151.5 | 162.3 | 162.0 | 144.7 | 150.7 | 162.3 | 151.3 | 146.9 | 147.6 | 123.4 | 132.5 | 139.9 | 135.7 | 147.4 | 0.59 | 7.5 | 8.0 |
| | May | 158.5 | 158.6 | 156.7 | 152.8 | 163.6 | 163.2 | 145.6 | 152.1 | 163.4 | 152.6 | 148.0 | 148.6 | 124.0 | 133.5 | 141.0 | 136.9 | 148.6 | 0.77 | 7.8 | 7.9 |
| | Jun | 159.7 | 159.7 | 157.6 | 154.0 | 164.9 | 164.5 | 146.6 | 153.2 | 164.7 | 153.7 | 148.9 | 149.6 | 124.7 | 134.3 | 141.4 | 137.8 | 149.7 | 0.74 | 8.0 | 7.9 |

NB: *indicates class indices adjusted due to rounding errors

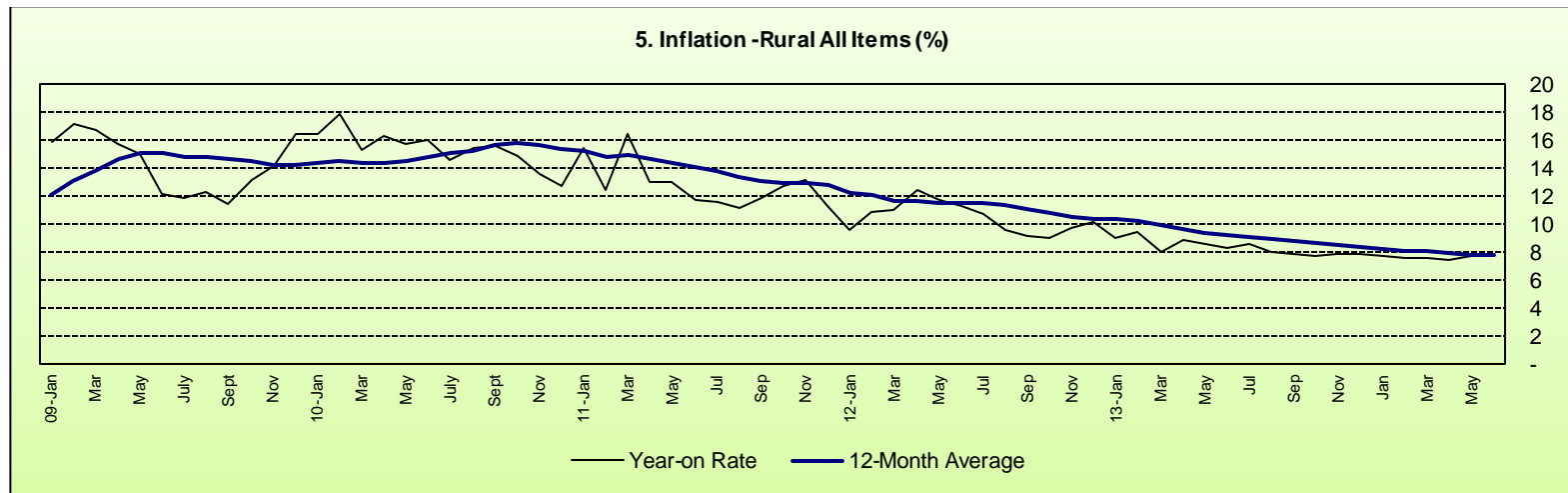


Table 5 Combined Urban And Rural State Consumer Price Index

(Base Period: November 2009 = 100)

| State | Jun-13 | | May-14 | | Jun-14 | |
|-------------|--------|-----------|--------|-----------|--------|-----------|
| | Food | All Items | Food | All Items | Food | All Items |
| Abia | 145.7 | 146.4 | 166.5 | 159.0 | 167.7 | 160.6 |
| Abuja | 118.9 | 135.7 | 153.9 | 156.5 | 155.1 | 157.0 |
| Adamawa | 145.0 | 135.2 | 158.8 | 154.1 | 159.9 | 155.1 |
| Akwalbom | 160.2 | 150.2 | 162.4 | 155.9 | 163.7 | 156.7 |
| Anambra | 129.9 | 154.6 | 151.1 | 150.6 | 152.4 | 151.8 |
| Bauchi | 154.6 | 155.3 | 150.6 | 157.4 | 151.8 | 158.5 |
| Bayelsa | 252.2 | 221.3 | 165.3 | 162.4 | 166.9 | 163.9 |
| Benue | 186.6 | 155.1 | 175.3 | 164.2 | 176.9 | 165.6 |
| Borno | 130.2 | 152.4 | 161.3 | 153.9 | 162.4 | 154.7 |
| Cross River | 190.4 | 161.8 | 157.5 | 157.9 | 158.8 | 158.8 |
| Delta | 173.6 | 155.8 | 155.8 | 154.1 | 157.2 | 155.6 |
| Ebonyi | 137.4 | 148.5 | 156.0 | 155.5 | 157.7 | 157.0 |
| Edo | 196.7 | 184.2 | 154.6 | 171.7 | 155.4 | 172.4 |
| Ekiti | 118.2 | 143.5 | 154.6 | 154.7 | 155.7 | 155.7 |
| Enugu | 135.6 | 143.9 | 156.8 | 152.5 | 158.1 | 153.5 |
| Gombe | 146.4 | 149.6 | 162.0 | 159.4 | 163.2 | 160.5 |
| Imo | 148.9 | 141.1 | 158.6 | 155.1 | 159.9 | 155.8 |
| Jigawa | 126.0 | 130.9 | 161.7 | 158.8 | 162.9 | 159.9 |
| Kaduna | 135.2 | 136.6 | 163.4 | 158.6 | 164.6 | 159.9 |
| Kano | 115.7 | 124.8 | 158.0 | 156.1 | 159.2 | 157.5 |
| Katsina | 127.1 | 123.5 | 159.1 | 144.8 | 160.6 | 145.9 |
| Kebbi | 124.4 | 128.6 | 154.0 | 154.7 | 155.3 | 155.9 |
| Kogi | 206.7 | 205.6 | 213.6 | 200.7 | 216.1 | 202.6 |
| Kwara | 138.8 | 164.5 | 162.7 | 183.7 | 164.9 | 185.8 |
| Lagos | 127.1 | 139.7 | 168.2 | 166.5 | 170.2 | 168.0 |
| Nassarawa | 123.9 | 129.4 | 150.0 | 151.3 | 151.1 | 152.3 |
| Niger | 127.4 | 131.4 | 154.7 | 159.9 | 155.9 | 161.0 |
| Ogun | 131.4 | 138.1 | 159.2 | 160.9 | 160.7 | 162.4 |
| Ondo | 131.0 | 133.1 | 164.6 | 160.4 | 166.1 | 161.9 |

| | | | | | | |
|--|-------|-------|-------|-------|-------|-------|
| Osun | 126.5 | 135.7 | 159.5 | 159.6 | 160.7 | 160.7 |
| Oyo | 177.9 | 167.1 | 173.2 | 166.3 | 174.5 | 167.7 |
| Plateau | 131.6 | 135.6 | 163.7 | 161.2 | 165.0 | 162.5 |
| Rivers | 188.2 | 163.5 | 163.0 | 155.6 | 164.3 | 156.9 |
| Sokoto | 120.0 | 131.9 | 152.5 | 152.2 | 153.6 | 153.5 |
| Taraba | 151.9 | 144.7 | 162.7 | 158.2 | 163.8 | 159.2 |
| Yobe | 134.2 | 141.7 | 162.2 | 159.1 | 163.4 | 160.2 |
| Zamfara | 126.1 | 128.8 | 160.9 | 156.2 | 162.0 | 157.3 |
| Note: Indices may not be used for inter-state price comparison because market baskets differ from State to State | | | | | | |