

CONSUMER PRICE INDEX
(BASE PERIOD NOVEMBER 2009 = 100)



No. 530
MAY2014



NATIONAL BUREAU OF STATISTICS

BRIEF METHODOLOGY:

The CPI measures the average change over time in prices of goods and services consumed by people for day-to-day living. The construction of the CPI combines economic theory, sampling and other statistical techniques using data from other surveys to produce a weighted measure of average price changes in the Nigerian economy. The weighting occurs to capture the importance of the selected commodities in the entire index. The production of the CPI requires skills of economists, statisticians, computer scientists, data collectors and others.

Key in the construction of the price index is the selection of the market basket of goods and services. Every month, 10,534 informants spread across the country provide price data for the computation of the CPI. The market items currently comprise of 740 goods and services regularly priced.

The first stage in the calculation of the CPI is the collection of prices on each item (740 goods and services) from outlets in each sector (rural or urban) for each state. Prices are then averaged for each item according to sector across the state. The next step is to use the average price to calculate the basic index for each commodity: The current year price of each commodity is compared with a base year's price to obtain a relative price.

Next we use the Laspeyres formula to compute an aggregated index for each class (which has a multitude of commodities which have similar consumption purposes): Here the sum of the product of weights

(obtained from the expenditure survey) and relative prices for each item is divided by the sum of the weight of the items in that class, and the result multiplied by 100 gives the required index number. This index number is still classified according to the urban or rural classification sector for each of the 36 states and the FCT. This yields 85 classes then 48 groups which are then reclassified into 12 Divisions to derive:

1. The country composite index
2. The Urban National index
3. The Rural National index
4. The Combined Urban and Rural State Composite index

The survey methodology generates 3774 all items indices for all states and the FCT.

This edition of the Statistical News contains the revised Consumer Price Index (CPI) based on Nigeria Living Standard Survey (NLSS) 2003/2004. The consumption expenditure data were re-valued to November 2009, which is the base period for the revised CPI.

The May 2003 and September 1985 based indices are being continued using factors derived from the new CPI. All of these indices will yield the same price change for any commodity group contained in all the series. A new sub index – Imported Food Index- is available in the revised CPI.

Note: The urban and rural indices were weighted with the ratio of their populations to the national i.e. 0.455 and 0.545 respectively to compute the composite indices at the 12 COICOP functions and all items

levels. This may cause variance between a recalculated all items index using the weights published on table 2 and the published all items index because the published weights

were computed only from consumption expenditure survey result. The following breakdown highlights a non-exhaustive list of the components of the current CPI:

FOOD AND NON ALCOHOLIC BEVERAGES

Food

Bread and cereals

Meat

Fish

Milk, cheese and eggs

Oils and fats

Fruit

Vegetables

Potatoes, Yam & other tubers

Food products n.e.c

Coffee, tea and cocoa

Soft drinks

ALCOHOLIC BEVERAGES, TOBACCO AND KOLA

Spirits

Wine

Tobacco

Narcotics

CLOTHING AND FOOTWEAR

Clothing materials, other articles of clothing

Garments

Cleaning, repair and hire of clothing

Shoes and other footwear

Repair and hire of footwear

HOUSING, WATER, ELECTRICITY, GAS

Actual and imputed rentals for housing

Water supply

Miscellaneous services relating to the dwelling

Electricity

Gas

Liquid fuel

Solid fuels

FURNISHINGS, HOUSEHOLD EQUIPMENT

Furniture and furnishings

Carpets and other floor coverings

Repair of Furniture

Household textiles

Major household appliances whether electric or not

Repair of household appliances

Glassware, tableware and household utensils
Non-durable household goods
Domestic services and household services
HEALTH
Pharmaceutical products
Medical services
Dental services
Paramedical services
Hospital services
TRANSPORT
Motor cars
Motor cycles
Bicycles
Vehicle spare parts
Fuels and lubricants for personal transportation
Maintenance and repair of personal transport
Passenger transport by road
Passenger transport by air
Passenger transport by sea and inland waterways
COMMUNICATION
Postal services
Telephone and telefax equipment
Telephone and telefax services
RECREATION AND CULTURE
Audio-visual, photographic and information processing equipments
Photographic development
Musical instrument
Recreational and sporting services
Games of chance
EDUCATION
Books & stationery
RESTAURANTS AND HOTELS
Catering services
Accommodation services
MISCELLANEOUS GOODS AND SERVICES
Hairdressing salons and personal grooming establishments
Appliances, articles and products for personal care
Jewellery, clocks and watches
Insurance
Other services.

ALL ITEMS INDEX

In May 2014, the Consumer Price Index (CPI), which measures inflation, was marginally higher when compared with April 2014. Prices rose by 8.0 percent (year-on-year) in May, from 7.9 percent recorded in the previous month. Since a decline of the headline index in January, prices continue to trend upwards, albeit at a slow pace increasing by 0.1 percentage points (year-on-year) each month between February and May.

The price increases seen in May were as a result of higher prices in groups that contribute to both the Food and Core sub-indices. Specifically, Food prices edged higher to 9.7 percent, up from 9.4 percent in April. Prices were pushed higher as a result of higher prices in the Bread and Cereals, Fish, Dairy, Fruits, and Vegetable groups. The price increases in the food sub-index were however weighed down by relatively slower increases in the Meats, Oils and fats, and, Potatoes, and Yams and Other tubers classes.

Prices measured by the “All items less farm produce” or Core sub-index increased at a faster rate in May from April. Prices rose by 7.7 percent (year-on-year), which was 0.2 percentage points higher from the rate recorded in April. This is the highest year-on-year rate recorded for the Core sub-index this year. Groups that contributed to the increase in the Core sub-index include furniture and furnishings, garments, rental prices, as well as liquid and solid fuels.

It should be noted that the Headline Index is made up of the Core Index and Farm Produce items. As Processed Foods are included in both the Core and Food sub-indices, this implies that these sub-indices are not mutually-exclusive.

COMPOSITION OF THE MAJOR INDEX AND SUB-INDICES	
All Items	= Farm Produce + Core index
Food	= Farm Produce + Processed Foods
Core	= All Items – Farm Produce

On a month on month basis, price increases in the headline index have risen and fallen since the start of the year. Prices increased by 0.78 percent in May, higher than rates recorded in April by roughly 0.2 percentage points. The month-on change also matches the highest month-on-month increase recorded this year (in March).

Urban prices increased at a faster rate in May, 8.2 percent, up 0.3 percentage points from April, after growing at a constant rate in March and April (7.9 percent year-on-year). Rural prices increased by 7.8 percent in May, also up by 0.3 percentage points from April, and the fastest since January 2014.

On a month on month basis, movements in the Urban and Rural indices have largely mirrored the headline index this year. In May, the Urban and Rural All-items indices rose by 0.8 percent and 0.77 percent respectively, which is about 0.2 percentage points higher than rates recorded in April.

The percentage change in the average composite CPI for the twelve-month period ending in May 2014 over the average of the CPI for the previous twelve-month period was recorded at 8.0 percent, marginally lower from the 8.1 percent average twelve month rate of change recorded in April 2014. The corresponding 12-month year-on-year

average percentage change for the Urban index was 8.2 percent, while the corresponding Rural index was recorded at 7.9 percent.

FOOD INDEX

Food prices increased by 9.7 percent in May, up by 0.3 percentage points from rates recorded in April. As observed by the Food sub-index, food prices increased for the third consecutive month (year-on-year) in May. This is also the highest year-on-year increase observed this year. On a month-on-month basis, food prices increased at the same rate of

change in May as observed in April - by 0.8 percent.

On a month-on-month basis, the highest price increases were recorded in Bread and cereals, Fruit, Soft Drinks, and Meat groups. The average annual rate of change of the Food sub-index for the twelve-month period ending in May 2014 was 9.4 percent, relatively unchanged from the average annual rate of change of the 12 month period ending in April 2014.

ALL ITEMS LESS FARM PRODUCE

In May, the “All items less Farm Produce” or Core index, which excludes the prices of volatile agricultural products increased at the fastest rate recorded this year (year-on-year) by 7.7 percent. This was higher than the rate recorded in April by 0.2 percentage points.

On a month-on-month basis, prices increased at the fastest rate in three months, increasing by 0.6 percent. This was marginally higher from the 0.4 percent rate recorded in April. The increase in the Core sub-index

(month-on-month) was as a result of price increases across various group items in particular; Garments, Carpets and other floor coverings, Non-durable household goods, Clothing materials, other articles of clothing and clothing accessories. The average 12 month annual rate of rise of the index was recorded at 7.2 percent for the twelve-month period ending in May 2014, up from the previous 12 month rate of change recorded in April by 0.2 percentage points.

For enquiries relating to this CPI report, please contact:
ykale@nigerianstat.gov.ng and udeokenwa@yahoo.com

Follow us on twitter [@nigerianstat](https://twitter.com/nigerianstat) and online at www.nigerianstat.gov.ng

Table 1 Composite Consumer Price Index (Base November 2009 = 100)

		All Items Index (Farm Produce + All Items Less Farm Produce)					All Items less Farm Produce (includes Processed Food)				Food (Farm Produce + Processed Food)			
		Monthly	12- Month Average	Month- on change (%)	Year-on change (%)	12- Month average change (%)	Monthly	Month- on change (%)	Year- on change (%)	12- Month average change (%)	Monthly	Month- on change (%)	Year- on change (%)	12- Month average change (%)
Weights**		1000.0					513.10				507.06			
Please note that the above weights are only expenditure weights which are still adjusted by population across 37 states. They should not be taken as the final weights in the computation of the CPI														
2009	Jan	90.2	86.0	0.5	14.0	12.0	91.1	-0.1	8.0	5.5	89.5	0.9	18.4	16.5
	Feb	90.8	87.0	0.7	14.6	12.6	91.7	0.6	7.2	5.6	90.2	0.8	20.0	17.5
	Mar	91.4	87.9	0.6	14.4	13.1	92.0	0.3	11.8	6.5	90.9	0.8	16.2	17.7
	Apr	91.9	88.8	0.6	13.3	13.5	92.5	0.6	10.9	7.3	91.6	0.7	15.3	17.9
	May	93.6	89.8	1.8	13.2	13.8	94.2	1.8	9.9	7.8	93.5	2.0	15.7	17.9
	June	95.3	90.6	1.8	11.2	13.7	95.3	1.2	8.5	8.3	95.6	2.2	13.1	17.5
	July	97.3	91.4	2.1	11.1	13.4	96.8	1.5	8.3	8.6	97.9	2.4	12.9	16.8
	Aug	98.4	92.2	1.1	11.0	13.3	97.3	0.5	8.0	8.9	98.9	1.1	12.7	16.3
	Sep	98.9	93.0	0.5	10.4	13.1	98.1	0.8	7.4	8.9	99.5	0.6	12.5	15.9
	Oct	99.4	93.8	0.5	11.6	12.8	98.9	0.8	8.9	9.0	99.9	0.4	13.5	15.4
	Nov	100.0	94.7	0.7	12.4	12.6	100.0	1.1	10.7	9.1	100.0	0.1	13.5	15.0
	Dec	102.2	95.8	2.2	13.9	12.5	101.5	1.5	11.2	9.2	102.4	2.4	15.5	14.8
2010	Jan	103.1	96.9	1.0	14.4	12.6	102.1	0.6	12.1	9.6	103.7	1.3	15.9	14.7
	Feb	105.0	98.0	1.9	15.6	12.7	104.5	2.3	14.0	10.1	104.8	1.1	16.2	14.4
	Mar	104.9	99.2	-0.1	14.8	12.8	104.1	-0.4	13.2	10.3	105.3	0.4	15.8	14.4
	Apr	105.7	100.3	0.8	15.0	12.9	104.4	0.3	12.8	10.4	106.6	1.2	16.3	14.5
	May	105.7	101.3	-0.04	12.9	12.9	105.2	0.8	11.7	10.6	105.7	-0.8	13.0	14.3

Table 1 Composite Consumer Price Index (Base November 2009 = 100)

		All Items Index (Farm Produce + All Items Less Farm Produce)					All Items less Farm Produce (includes Processed Food)				Food (Farm Produce + Processed Food)			
		Monthly	12- Month Average	Month- on change (%)	Year-on change (%)	12- Month average change (%)	Monthly	Month- on change (%)	Year- on change (%)	12- Month average change (%)	Monthly	Month- on change (%)	Year- on change (%)	12- Month average change (%)
Weights**		1000.0					513.10				507.06			
Please note that the above weights are only expenditure weights which are still adjusted by population across 37 states. They should not be taken as the final weights in the computation of the CPI														
	Jun	108.8	102.4	2.91	14.1	13.1	107.4	2.1	12.7	10.9	110.0	4.1	15.1	14.4
	Jul	109.9	103.5	1.08	13.0	13.3	107.7	0.3	11.3	11.2	111.6	1.5	14.0	14.5
	Aug	111.9	104.6	1.76	13.7	13.5	109.3	1.5	12.4	11.5	113.8	2.0	15.1	14.7
	Sep	112.4	105.7	0.46	13.6	13.8	110.7	1.3	12.8	12.0	114.0	0.1	14.6	14.9
	Oct	112.7	106.9	0.30	13.4	13.9	111.9	1.1	13.2	12.3	114.0	-0.0	14.1	14.9
	Nov	112.8	107.9	0.04	12.8	13.9	111.7	-0.1	11.7	12.4	114.4	0.3	14.4	15.0
	Dec	114.2	108.9	1.29	11.8	13.7	112.6	0.7	10.9	12.4	115.4	0.9	12.7	14.7
2011	Jan	115.6	110.0	1.20	12.1	13.5	114.5	1.7	12.1	12.4	114.3	-0.9	10.3	14.2
	Feb	116.7	110.9	0.96	11.1	13.2	115.5	0.9	10.6	12.1	117.7	2.9	12.2	13.9
	Mar	118.3	112.1	1.37	12.8	13.0	117.5	1.7	12.8	12.1	118.1	0.4	12.2	13.6
	Apr	117.7	113.0	-0.54	11.3	12.7	117.9	0.3	12.9	12.1	119.0	0.7	11.6	13.2
	May	118.7	114.1	0.91	12.4	12.6	118.9	0.9	13.0	12.2	118.5	-0.3	12.2	13.2
	Jun	119.9	115.1	0.97	10.2	12.3	119.8	0.7	11.5	12.1	120.1	1.3	9.2	12.7
	Jul	120.3	115.9	0.32	9.4	12.0	120.1	0.2	11.5	12.1	120.4	0.2	7.9	12.1
	Aug	122.3	116.8	1.67	9.3	11.6	121.2	0.9	10.9	12.0	123.7	2.7	8.7	11.6

Table 1 Composite Consumer Price Index (Base November 2009 = 100)

		All Items Index (Farm Produce + All Items Less Farm Produce)					All Items less Farm Produce (includes Processed Food)				Food (Farm Produce + Processed Food)			
		Monthly	12- Month Average	Month- on change (%)	Year-on change (%)	12- Month average change (%)	Monthly	Month- on change (%)	Year- on change (%)	12- Month average change (%)	Monthly	Month- on change (%)	Year- on change (%)	12- Month average change (%)
Weights**		1000.0					513.10				507.06			
Please note that the above weights are only expenditure weights which are still adjusted by population across 37 states. They should not be taken as the final weights in the computation of the CPI														
	Sep	124.0	117.8	1.41	10.3	11.4	123.5	1.9	11.6	11.9	124.8	0.9	9.5	11.2
	Oct	124.6	118.8	0.49	10.5	11.1	124.8	1.1	11.5	11.7	125.0	0.2	9.7	10.8
	Nov	124.7	119.7	0.04	10.5	11.0	124.6	-0.2	11.5	11.7	125.4	0.3	9.6	10.4
	Dec	126.0	120.7	1.06	10.3	10.8	124.8	0.2	10.8	11.7	128.1	2.2	11.0	10.3
2012	Jan	130.2	121.9	3.35	12.6	10.9	129.1	3.5	12.7	11.8	129.3	0.9	13.1	10.5
	Feb	130.5	123.1	0.28	11.9	11.0	129.3	0.1	11.9	11.9	129.1	-0.1	9.7	10.3
	Mar	132.6	124.3	1.59	12.1	10.9	135.1	4.5	15.0	12.1	132.1	2.3	11.8	10.3
	Apr	132.8	125.5	0.13	12.9	11.1	135.2	0.1	14.7	12.2	132.3	0.2	11.2	10.3
	May	133.8	126.8	0.75	12.7	11.1	136.7	1.1	14.9	12.4	133.9	1.2	12.9	10.4
	Jun	135.3	128.1	1.15	12.9	11.3	138.0	1.0	15.2	12.7	134.5	0.5	12.0	10.6
	Jul	135.7	129.4	0.24	12.8	11.6	138.1	0.1	15.0	13.0	135.0	0.3	12.1	11.0
	Aug	136.6	130.6	0.67	11.7	11.8	139.0	0.6	14.7	13.3	135.9	0.7	9.9	11.1
	Sep	138.0	131.7	1.01	11.3	11.9	139.7	0.5	13.1	13.5	137.5	1.1	10.2	11.1
	Oct	139.2	133.0	0.88	11.7	11.9	140.3	0.4	12.4	13.5	138.8	1.0	11.1	11.2
	Nov	140.0	134.2	0.60	12.3	12.1	140.9	0.4	13.1	13.6	139.8	0.7	11.6	11.4

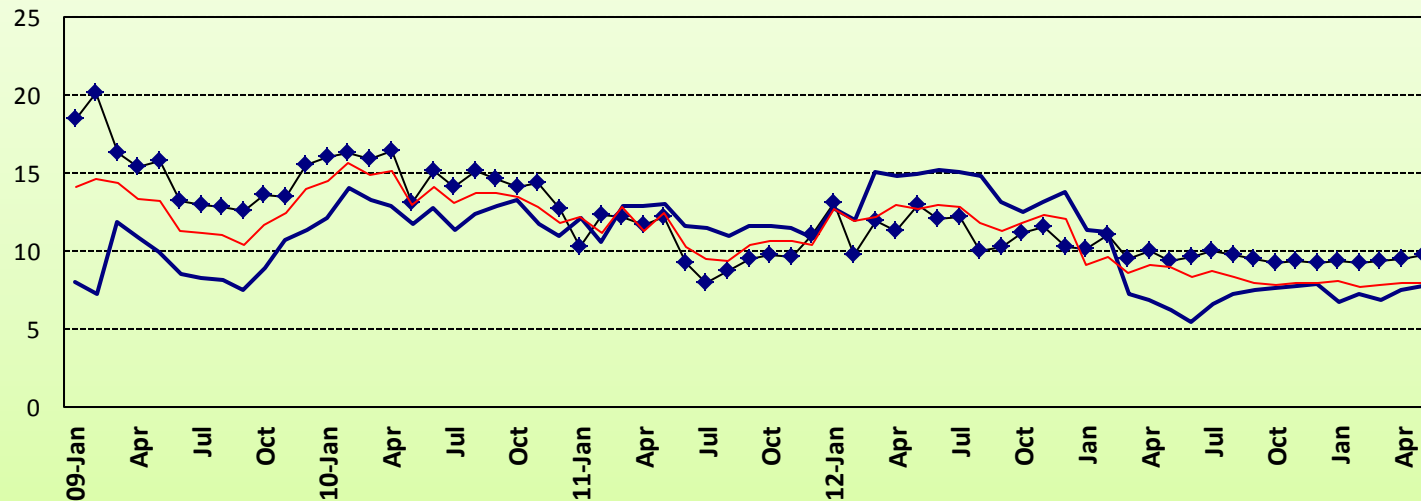
Table 1 Composite Consumer Price Index (Base November 2009 = 100)

		All Items Index (Farm Produce + All Items Less Farm Produce)					All Items less Farm Produce (includes Processed Food)				Food (Farm Produce + Processed Food)			
		Monthly	12- Month Average	Month- on change (%)	Year-on change (%)	12- Month average change (%)	Monthly	Month- on change (%)	Year- on change (%)	12- Month average change (%)	Monthly	Month- on change (%)	Year- on change (%)	12- Month average change (%)
Weights**		1000.0					513.10				507.06			
Please note that the above weights are only expenditure weights which are still adjusted by population across 37 states. They should not be taken as the final weights in the computation of the CPI														
	Dec	141.1	135.5	0.75	12.0	12.2	141.8	0.7	13.7	13.9	141.2	1.0	10.2	11.3
2013	Jan	141.9	136.5	0.62	9.0	11.9	143.8	1.4	11.3	13.7	142.3	0.8	10.1	11.1
	Feb	143.0	137.5	0.75	9.5	11.7	143.8	0.0	11.2	13.7	143.3	0.7	11.0	11.2
	Mar	144.0	138.4	0.71	8.6	11.4	144.8	0.7	7.2	13.0	144.6	1.0	9.5	11.0
	Apr	144.8	139.4	0.55	9.1	11.1	144.5	-0.2	6.9	12.3	145.6	0.6	10.0	10.8
	May	145.8	140.4	0.67	9.0	10.8	145.2	0.5	6.2	11.5	146.4	0.5	9.3	10.5
	Jun	146.6	141.4	0.59	8.4	10.4	145.5	0.3	5.5	10.7	147.5	0.7	9.6	10.4
	Jul	147.4	142.4	0.54	8.7	10.0	147.2	1.2	6.6	10.0	148.4	0.7	10.0	10.2
	Aug	147.8	143.3	0.25	8.2	9.8	149.1	1.3	7.2	9.4	149.2	0.5	9.7	10.2
	Sep	148.9	144.2	0.75	8.0	9.5	150.0	0.6	7.4	8.9	150.4	0.9	9.4	10.1
	Oct	150.0	145.1	0.75	7.8	9.2	150.9	0.6	7.6	8.6	151.6	0.8	9.2	10.0
	Nov	151.1	146.1	0.72	7.9	8.8	151.8	0.6	7.8	8.1	152.9	0.8	9.3	9.8
	Dec	152.3	147.0	0.78	8.0	8.5	153.0	0.8	7.9	7.7	154.3	0.9	9.3	9.7
2014	Jan	153.3	147.9	0.64	8.0	8.4	153.3	0.2	6.6	7.3	155.5	0.8	9.3	9.6
	Feb	154.0	148.8	0.50	7.7	8.3	154.1	0.5	7.2	7.0	156.5	0.6	9.2	9.5
	Mar	155.2	149.8	0.78	7.8	8.2	154.7	0.4	6.8	7.0	158.0	1.0	9.3	9.5

Table 1 Composite Consumer Price Index (Base November 2009 = 100)

	All Items Index (Farm Produce + All Items Less Farm Produce)						All Items less Farm Produce (includes Processed Food)				Food (Farm Produce + Processed Food)			
	Monthly	12- Month Average	Month- on change (%)	Year- on change (%)	12- Month average change (%)		Monthly	Month- on change (%)	Year- on change (%)	12- Month average change (%)	Monthly	Month- on change (%)	Year- on change (%)	12- Month average change (%)
Weights**	1000.0						513.10				507.06			
Please note that the above weights are only expenditure weights which are still adjusted by population across 37 states. They should not be taken as the final weights in the computation of the CPI														
	Apr	156.2	150.7	0.62	7.9	8.1	155.3	0.4	7.5	7.0	159.3	0.8	9.4	9.4
	May	157.4	151.7	0.78	8.0	8.0	156.3	0.6	7.7	7.2	160.6	0.8	9.7	9.4

1. Inflation: Composite Year-on Change (%)



2. Inflation: Composite 12-Month Average Change (%)

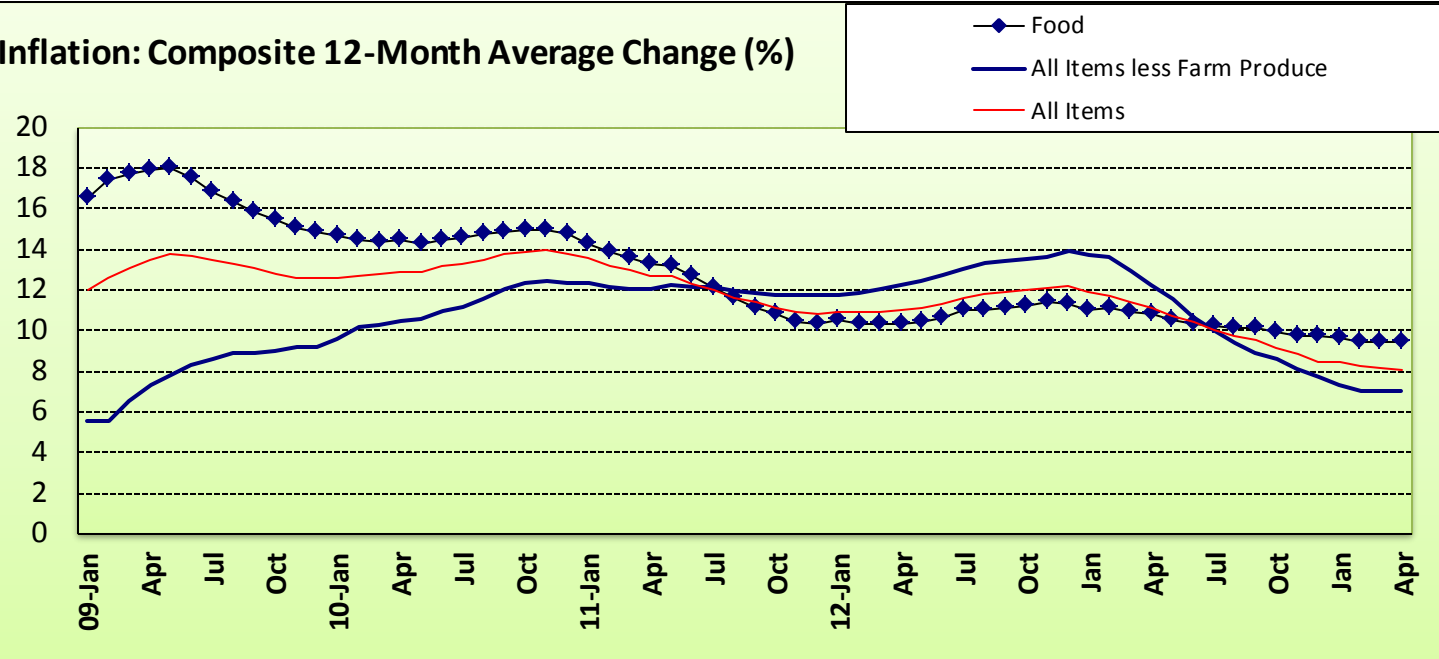


Table 2 Composite Consumer Price Index (Base November 2009 = 100)

		All Items	All Items less Farm Produce.	All Items less Farm Produce. and Energy	Imported Food	Food	Food & Non Alcoholic Bev.	Alcoholic Beverage. Tobacco and Kola	Clothing and Footwear	Housing Water, Electricity, Gas and Other Fuel	Furnishings & Household Equipment Maintenance.	Health.	Transport	Communication	Recreation & Culture.	Education	Restaurant & Hotels	Miscellaneous Goods & Services	Month-on (%)	Year-on (%)	12-month average (%)
Weights**		1000	513.1	428.1	132.5	507.06	518	10.87	76.5	167.3	50.26	30	65.1	6.8	6.91	39.44	12.1	16.6			
Please note that the above weights are only expenditure weights which are still adjusted by population across 37 states. They should not be taken as the final weights in the computation of the CPI																					
2009	Jan	90.2	91.1	92.6		89.5	89.5	97.6	97.0	92.3	87.3	97.1	91.2	97.1	93.7	88.3	99.4	93.9	0.5	14.0	12.0
	Feb	90.8	91.7	92.6		90.2	90.2	98.5	97.0	92.6	87.4	98.6	90.2	97.1	92.8	88.1	100.4	94.1	0.7	14.6	12.6
	Mar	91.4	92.0	93.1		90.9	91.0	98.5	97.1	92.6	87.9	99.0	91.0	97.1	92.7	89.9	100.2	94.9	0.6	14.4	13.1
	Apr	91.9	92.5	94.1		91.6	91.7	99.1	97.5	92.9	89.6	101.1	94.4	97.1	93.4	89.3	101.3	95.4	0.6	13.3	13.5
	May	93.6	94.2	95.4		93.5	93.5	99.5	96.7	94.3	88.8	99.2	96.0	97.1	94.6	92.3	100.2	94.5	1.8	13.2	13.8
	June	95.3	95.3	96.6		95.6	95.6	99.7	97.1	96.3	89.6	100.1	94.0	97.1	95.0	92.6	101.1	97.8	1.8	11.2	13.7
	July	97.3	96.8	98.4		97.9	97.8	101.4	97.9	98.3	99.3	101.7	92.5	99.4	96.8	93.9	98.9	98.8	2.1	11.1	13.4
	Aug	98.4	97.3	97.7		98.9	98.9	100.2	99.1	98.4	100.2	101.8	93.1	101.5	98.1	99.4	101.2	100.0	1.1	11.0	13.3
	Sep	98.9	98.1	98.5		99.5	99.5	99.3	99.1	98.7	98.7	101.6	94.9	101.2	97.6	99.6	99.9	100.1	0.5	10.4	13.1
	Oct	99.4	98.9	99.1		99.9	99.9	99.7	99.6	99.5	99.1	102.3	96.0	100.4	97.5	97.7	99.0	99.7	0.5	11.6	12.8
	Nov	100.0	100.0	100.0	100.0	100.0	100.0	100.0	100.0	100.0	100.0	100.0	100.0	100.0	100.0	100.0	100.0	100.0	0.7	12.4	12.6
	Dec	102.2	101.5	101.9	101.5	102.4	102.7	101.9	101.5	100.2	101.7	101.8	101.8	100.0	101.9	101.5	102.6	101.7	2.2	13.9	12.5
2010	Jan	103.1	102.1	102.6	101.7	103.7	103.9	102.3	102.4	100.6	103.0	103.0	103.0	99.6	103.0	103.1	106.7	103.3	1.0	14.4	12.6
	Feb	105.0	104.5	105.0	103.2	104.8	105.4	102.6	103.4	102.3	104.7	104.9	104.7	100.3	99.4	106.0	106.3	105.9	1.9	15.1	12.7

Table 2 Composite Consumer Price Index (Base November 2009 = 100)

	All Items	All Items less Farm Produce.	All Items less Farm Produce. and Energy	Imported Food	Food	Food & Non Alcoholic Bev.	Alcoholic Beverage. Tobacco and Kola	Clothing and Footwear	Housing Water, Electricity, Gas and Other Fuel	Furnishings & Household Equipment Maintenance.	Health.	Transport	Communication	Recreation & Culture.	Education	Restaurant & Hotels	Miscellaneous Goods & Services	Month-on (%)	Year-on (%)	12-month average (%)	
Weights**	1000	513.1	428.1	132.5	507.06	518	10.87	76.5	167.3	50.26	30	65.1	6.8	6.91	39.44	12.1	16.6				
Please note that the above weights are only expenditure weights which are still adjusted by population across 37 states. They should not be taken as the final weights in the computation of the CPI																					
																				6	
	Mar	104.9	104.1	104.6	103.0	105.3	105.3	104.3	104.5	102.2	105.7	105.3	104.8	100.6	103.3	105.5	105.6	104.4	-0.1	14.8	12.8
	Apr	105.7	104.4	105.1	103.9	106.6	106.7	104.8	105.1	102.2	103.8	104.9	106.8	100.4	103.1	105.6	109.7	106.2	0.8	15.0	12.9
	May	105.7	105.2	106.5	104.9	105.7	106.2	103.8	105.9	102.1	102.6	104.8	106.3	100.2	103.3	108.6	110.1	107.2	-0.04	12.9	12.9
	Jun	108.8	107.4	108.6	109.6	110.0	110.2	108.5	109.1	104.8	110.7	108.5	107.4	102.1	102.6	106.6	106.9	109.6	2.91	14.1	13.1
	Jul	109.9	107.7	108.8	109.3	111.6	112.0	109.6	110.3	105.1	109.0	110.3	107.5	102.6	103.0	105.7	105.0	110.7	1.08	13.0	13.3
	Aug	111.9	109.3	110.4	109.3	113.8	114.1	112.3	112.8	106.2	110.3	112.3	108.6	100.6	105.0	106.0	107.3	111.2	1.76	13.7	13.5
	Sep	112.4	110.7	111.7	113.6	114.0	113.5	109.0	112.4	109.9	112.1	112.0	112.2	101.8	108.4	108.4	107.1	111.7	0.46	13.6	13.8
	Oct	112.7	111.9	112.0	114.1	114.0	114.1	111.7	112.8	111.0	113.2	114.8	107.1	102.9	109.6	110.1	108.5	110.6	0.30	13.4	13.9
	Nov	112.8	111.7	111.3	115.1	114.4	114.3	112.2	112.0	112.6	113.1	111.1	111.7	102.0	107.8	107.7	108.2	112.8	0.04	12.8	13.9
	Dec	114.2	112.6	112.5	115.4	115.4	115.5	111.9	113.7	113.2	113.2	112.7	112.9	102.4	107.8	109.1	109.6	112.1	1.29	11.8	13.7
2011	Jan	115.6	114.5	113.0	96.0	114.3	118.7	110.6	114.4	113.9	113.5	111.3	109.2	103.6	108.3	110.2	110.5	113.2	1.2	12.1	13.5
	Feb	116.7	115.5	115.5	124.0	117.7	117.9	113.4	116.0	114.7	115.6	114.7	117.2	104.9	106.3	110.6	112.3	114.2	0.96	11.1	13.2
	Mar	118.3	117.5	117.5	119.4	118.1	118.2	112.7	116.5	116.0	115.9	117.5	115.5	105.1	107.4	111.0	112.2	112.8	1.37	12.8	13.0

Table 2 Composite Consumer Price Index (Base November 2009 = 100)

	All Items	All Items less Farm Produce.	All Items less Farm Produce. and Energy	Imported Food	Food	Food & Non Alcoholic Bev.	Alcoholic Beverage. Tobacco and Kola	Clothing and Footwear	Housing Water, Electricity, Gas and Other Fuel	Furnishings & Household Equipment Maintenance.	Health.	Transport	Communication	Recreation & Culture.	Education	Restaurant & Hotels	Miscellaneous Goods & Services	Month-on (%)	Year-on (%)	12-month average (%)	
Weights**	1000	513.1	428.1	132.5	507.06	518	10.87	76.5	167.3	50.26	30	65.1	6.8	6.91	39.44	12.1	16.6				
Please note that the above weights are only expenditure weights which are still adjusted by population across 37 states. They should not be taken as the final weights in the computation of the CPI																					
	Apr	117.7	117.9	117.9	119.1	119.0	118.0	114.5	116.2	121.0	115.4	117.2	114.8	105.1	107.1	111.4	113.3	114.7	-0.54	11.3	12.7
	May	118.7	118.9	119.0	120.6	118.5	118.5	115.1	118.2	121.2	116.6	116.6	115.7	105.7	107.4	111.9	113.8	115.6	0.91	12.4	12.6
	Jun	119.9	119.8	119.8	111.9	120.1	119.5	114.2	118.0	121.6	116.3	119.9	118.5	105.6	107.9	112.2	114.3	117.9	0.97	10.2	12.3
	Jul	120.3	120.1	119.9	112.6	120.4	120.2	112.4	117.7	122.5	117.6	118.3	120.7	106.2	111.1	112.6	115.0	119.8	0.32	9.4	12.0
	Aug	122.3	121.2	121.1	116.0	123.7	123.4	116.4	118.7	124.5	120.0	120.4	121.9	106.4	109.5	112.9	115.1	121.5	1.67	9.3	11.6
	Sep	124.0	123.5	122.7	117.6	124.8	124.2	116.2	119.9	126.1	119.2	122.3	122.3	106.2	109.8	113.8	115.7	121.6	1.41	10.3	11.4
	Oct	124.6	124.8	124.0	117.0	125.0	124.3	117.6	120.6	128.5	119.5	121.8	122.2	106.6	117.0	114.0	116.6	122.0	0.49	10.5	11.1
	Nov	124.7	124.6	123.5	124.2	125.4	125.1	118.9	121.9	128.1	120.2	122.7	123.3	107.1	115.7	114.2	116.9	125.5	0.04	10.5	11.0
	Dec	126.0	124.8	123.6	125.3	128.1	127.8	119.0	122.3	131.9	119.9	122.8	128.7	106.5	113.3	114.6	118.9	122.7	1.06	10.3	10.8
2012	Jan	130.2	129.1	129.2	121.6	129.3	130.8	123.2	121.1	131.8	120.6	122.7	127.8	108.7	114.5	115.0	120.0	125.9	3.35	12.6	10.9
	Feb	130.5	129.3	129.4	121.6	129.1	129.1	123.2	121.1	131.8	120.6	122.7	127.9	108.7	114.5	115.1	120.0	125.9	0.28	11.9	11.0
	Mar	132.6	135.1	134.5	129.9	132.1	131.9	120.6	133.7	139.7	130.2	129.7	134.4	113.4	116.7	125.6	121.4	131.6	1.59	12.1	10.9
	Apr	132.8	135.2	134.7	131.3	132.3	132.1	121.3	134.1	139.5	130.7	130.1	134.6	114.0	117.6	125.0	121.9	132.0	0.13	12.9	11.1
	May	133.8	136.7	136.3	132.5	133.9	133.7	122.0	134.7	139.7	131.1	130.8	135.1	114.4	118.4	125.5	122.6	132.6	0.75	12.7	11.1
	Jun	135.3	138.0	136.2	132.6	134.5	134.3	122.5	134.8	146.5	131.3	131.1	135.5	114.8	118.5	125.7	123.1	132.9	1.15	12.1	11.3

Table 2 Composite Consumer Price Index (Base November 2009 = 100)

	All Items	All Items less Farm Produce.	All Items less Farm Produce. and Energy	Imported Food	Food	Food & Non Alcoholic Bev.	Alcoholic Beverage, Tobacco and Kola	Clothing and Footwear	Housing Water, Electricity, Gas and Other Fuel	Furnishings & Household Equipment Maintenance.	Health.	Transport	Communication	Recreation & Culture.	Education	Restaurant & Hotels	Miscellaneous Goods & Services	Month-on (%)	Year-on (%)	12-month average (%)
Weights**	1000	513.1	428.1	132.5	507.06	518	10.87	76.5	167.3	50.26	30	65.1	6.8	6.91	39.44	12.1	16.6			
Please note that the above weights are only expenditure weights which are still adjusted by population across 37 states. They should not be taken as the final weights in the computation of the CPI																				
																			9	
	Jul	135.7	138.1	136.5	132.9	135.0	134.7	134.9	146.7	131.3	131.3	135.8	114.9	118.9	125.9	123.4	133.1	0.24	12.8	11.6
	Aug	136.6	139.0	137.1	134.2*	135.9	135.7	135.6	147.8	132.0	132.0*	136.6	115.2	119.4	126.4	124.4	133.7	0.67	11.7	11.8
	Sep	138.0	139.7	137.7	134.2	137.5	137.2	136.5	150.1	132.9	132.4	137.3	115.6	120.6	126.7	125.0	134.4	1.01	11.3	11.9
	Oct	139.2	140.3	138.1	135.3	138.8	136.6	124.5	137.5	151.5	133.5	133.1	138.5	116.6	121.4	128.1	125.4	0.88	11.7	11.9
	Nov	140.0	140.9	138.7	136.2	139.8	139.6	125.3	138.2	152.3	134.1	133.5	138.9	116.2	121.8	128.8	125.7	0.60	12.3	12.1
	Dec	141.1	141.8	139.6	137.6	141.2	140.9	126.1	139.1	153.2	134.4	133.9	140.2	116.3	122.1	129.1	126.1	0.75	12.0	12.2
2013	Jan	141.9	143.8	140.3	138.7	142.3	142.0	127.1	140.1	153.8	135.4	134.3	140.6	116.4	122.2	129.3	126.4	0.62	9.0	11.9
	Feb	143.0	143.8	140.5	139.1	143.3	143.0	128.1	141.3	155.2	136.4	135.5	141.9	116.9	123.3	130.2	127.5	0.75	9.5	11.7
	Mar	144.0	144.8	142.9	139.3	144.6	144.3	128.7	141.8	155.9	136.9	136.4	142.4	117.3	123.7	131.2	127.7	0.71	8.6	11.4
	Apr	144.8	144.5	142.3	139.9	145.6	145.3	129.4	142.8	156.3	137.6	137.3	143.2	117.4	124.5	131.7	128.1	0.55	9.1	11.1
	May	145.8	145.2	141.9	140.1	146.4	146.1	130.1	144.0	157.2	139.3	138.6	144.5	117.9	125.8	133.2	129.1	0.67	9.0	10.8
	Jun	146.6	145.5	142.2	141.4	147.5	147.1	130.7	144.6	158.0	139.9	139.4	145.0	118.1	126.3	133.3	129.7	0.59	8.4	10.4
	Jul	147.4	147.2	145.1	142.4	148.4	148.1	131.3	145.2	158.8	140.4	140.0	145.5	118.5	126.6	133.5	130.3	0.54	8.7	10.0
	Aug	147.8	149.1	146.3	143.2	149.2	148.8	131.6	145.3	158.5	140.5	140.0	145.6	118.6	126.7	133.8	130.5	0.25	8.2	9.8
	Sep	148.9	150.0	147.8	144.3	150.4	150.1	132.4	146.3	159.4	141.3	140.9	146.7	119.1	127.5	134.9	131.5	0.75	8.0	9.5
	Oct	150.0	150.9	148.6	145.5	151.6	151.3	133.4	147.5	160.3	142.3	142.0	147.8	120.0	128.5	136.0	132.6	0.75	7.8	9.2
	Nov	151.1	151.8	149.5	146.3	152.9	152.5	134.2	148.7	161.3	143.2	142.7	148.6	120.4	129.3	137.0	133.6	0.72	7.9	8.8
	Dec	152.3	153.0	150.8	147.4	154.3	153.9	134.7	149.8	162.2	144.1	143.5	149.6	120.9	130.1	137.9	134.4	0.78	8.0	8.5

Table 2 Composite Consumer Price Index (Base November 2009 = 100)

	All Items	All Items less Farm Produce.	All Items less Farm Produce. and Energy	Imported Food	Food	Food & Non Alcoholic Bev.	Alcoholic Beverage. Tobacco and Kola	Clothing and Footwear	Housing Water, Electricity, Gas and Other Fuel	Furnishings & Household Equipment Maintenance.	Health.	Transport	Communication	Recreation & Culture.	Education	Restaurant & Hotels	Miscellaneous Goods & Services	Month-on (%)	Year-on (%)	12-month average (%)	
Weights**	1000	513.1	428.1	132.5	507.06	518	10.87	76.5	167.3	50.26	30	65.1	6.8	6.91	39.44	12.1	16.6				
Please note that the above weights are only expenditure weights which are still adjusted by population across 37 states. They should not be taken as the final weights in the computation of the CPI																					
2014	Jan	153.3	153.3	150.7	148.4	155.5	155.2	135.5	150.7	162.7	145.0	144.3	150.4	121.3	131.0	138.3	134.9	146.5	0.64	8.0	8.4
	Feb	154.0	154.1	151.8	149.1	156.5	156.1	136.0	151.4	163.3	145.5	145.0	151.0	121.6	132.0	138.7	135.3	146.9	0.50	7.7	8.3
	Mar	155.2	154.7	152.5	150.3	158.0	157.6	136.7	151.9	164.2	146.5	145.9	152.0	122.1	132.8	139.4	136.1	147.7	0.78	7.8	8.2
	Apr	156.2	155.3	153.1	151.1	159.3	158.9	137.5	152.7	164.9	147.0	146.3	152.6	122.6	133.5	139.9	136.9	148.4	0.6	7.9	8.1
	May	157.4	156.3	154.0	152.4	160.6	160.2	138.3	154.1	166.0	148.2	147.4	153.8	123.1	134.5	140.9	138.1	149.6	0.8	8.0	8.0

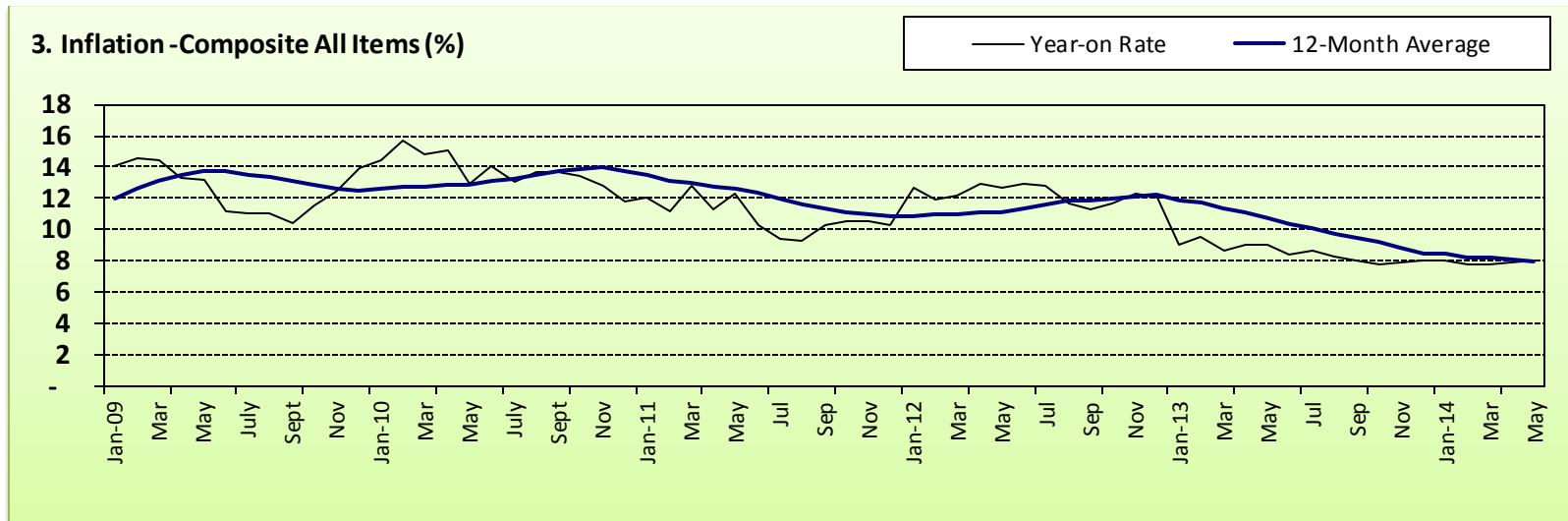


Table 3 Urban Consumer Price Index (Base November 2009 = 100)

		All Items	All Items less Farm Produce.	All Items less Farm Produce. and Energy	Imported Food	Food	Food & Non Alcoholic Bev.	Alcoholic Beverage. Tobacco and Kola	Clothing and Footwear	Housing Water, Electricity, Gas and Other Fuel	Furnishings & Household Equipment Maintenance.	Health.	Transport	Communication	Recreation & Culture.	Education	Restaurant & Hotels	Miscellaneous Goods & Services	Month-on (%)	Year-on (%)	12-month average (%)
Weights		1000	575.22	440.93	155.13	476.82	490.59	11.19	65.5	191.51	49.74	27.4	74.54	10.14	7.2	40.05	14.49	17.65			
Please note that the above weights are only expenditure weights which are still adjusted by population across 37 states. They should not be taken as the final weights in the computation of the CPI																					
2009	Jan	92.8	96.6	97.8		90.5	90.5	97.6	97.8	96.4	96.3	96.3	94.0	99.3	97.8	92.3	102.0	96.0	0.0	10.4	11.8
	Feb	93.6	96.3	97.6		92.0	92.0	98.6	98.2	95.5	96.2	98.1	93.0	99.3	97.8	90.9	103.2	95.2	0.8	9.8	11.6
	Mar	93.9	96.5	98.0		92.4	92.4	98.8	97.9	95.5	96.5	98.3	94.1	99.3	96.7	93.0	104.1	95.1	0.4	9.9	11.5
	Apr	94.3	97.4	98.8		92.5	92.6	99.9	98.6	96.4	98.0	99.6	95.7	99.3	97.8	89.7	104.4	95.6	0.5	8.6	11.3
	May	95.7	98.2	98.7		94.1	94.1	100.1	96.9	98.1	96.2	97.9	97.1	99.3	98.9	96.3	104.2	98.2	1.4	9.5	11.2
	June	97.2	98.8	99.7		96.3	96.3	100.6	97.0	98.5	97.4	99.3	96.7	99.3	99.9	96.7	106.2	98.1	1.6	9.2	11.0
	July	98.9	99.5	100.3		98.4	98.4	102.1	99.9	100.2	98.8	100.9	95.7	100.8	100.1	97.6	100.1	98.5	1.7	9.3	10.7
	Aug	99.6	99.7	99.4		99.3	99.3	100.7	99.9	100.6	99.7	100.3	95.1	102.1	101.2	97.4	105.2	99.9	0.7	8.4	10.4
	Sep	99.8	99.5	99.2		99.8	99.8	99.8	99.7	100.3	101.1	98.8	96.0	101.5	100.5	99.5	99.7	100.8	0.2	8.1	10.0
	Oct	99.8	99.9	99.3		99.6	99.6	99.8	100.3	100.8	100.9	99.9	96.8	100.9	100.1	98.9	98.0	100.7	0.0	8.3	9.5
	Nov	100.0	100.0	100.0	100.0	100.0	100.0	100.0	100.0	100.0	100.0	100.0	100.0	100.0	100.0	100.0	100.0	100.0	0.2	8.8	9.3
	Dec	101.4	101.3	101.8	100.5	101.6	101.7	99.9	100.9	101.4	100.8	101.6	102.0	99.2	104.2	100.7	103.2	101.6	1.4	9.3	9.1
2010	Jan	102.6	102.5	102.7	101.1	102.8	102.8	100.7	103.1	102.6	101.9	102.4	103.5	99.7	105.8	102.5	108.3	102.8	1.2	10.5	9.1
	Feb	104.4	105.4	105.4	103.1	102.9	103.6	101.6	103.6	104.4	103.6	105.4	103.9	100.1	99.4	108.0	106.7	106.3	1.8	11.6	9.3
	Mar	106.0	105.7	105.9	103.5	106.1	105.9	103.8	105.9	104.8	106.1	106.8	108.1	100.9	107.1	106.8	107.5	106.1	1.5	12.9	9.6
	Apr	105.9	105.4	105.6	103.4	106.3	106.1	103.9	106.0	103.9	105.5	106.9	106.7	100.8	108.3	106.6	111.5	107.0	-0.1	12.2	9.9
	May	103.8	103.7	104.9	104.5	103.8	104.7	102.0	104.7	99.2	103.0	104.1	105.9	101.2	105.0	105.7	109.3	104.8	-1.9	8.5	9.8
	Jun	107.7	107.0	108.0	110.0	108.5	108.6	106.8	108.7	105.2	108.7	107.9	106.2	103.4	104.0	106.8	108.6	109.3	3.7	10.8	9.9
	Jul	109.1	107.9	108.4	109.1	110.4	110.6	109.2	110.4	103.9	108.4	111.6	109.3	104.0	102.8	106.7	106.4	110.6	1.3	10.3	10.0
	Aug	110.5	109.0	109.9	111.0	112.8	112.9	110.0	112.1	103.0	110.7	113.0	110.0	100.9	106.4	108.1	111.6	111.7	1.3	10.9	10.2
	Sep	110.6	109.4	110.5	113.0	112.6	112.4	106.6	112.4	106.0	110.5	110.0	112.2	101.4	110.1	107.6	107.3	109.2	0.1	10.9	10.4
	Oct	111.2	110.0	110.1	114.3	113.5	113.5	109.6	111.6	110.7	109.4	110.8	105.8	101.4	109.0	108.4	106.0	110.8	0.5	11.5	10.7
	Nov	111.7	111.3	111.1	113.4	112.8	112.8	110.0	112.2	111.0	111.1	111.8	110.4	101.1	109.7	107.9	107.8	113.1	0.5	11.7	10.9
	Dec	112.2	111.2	111.0	113.5	113.4	113.4	109.7	113.8	111.8	111.5	112.9	111.7	100.8	109.2	109.3	111.3	112.7	0.4	10.7	11.0

Table 3 Urban Consumer Price Index (Base November 2009 = 100)

		All Items	All Items less Farm Produce.	All Items less Farm Produce. and Energy	Imported Food	Food	Food & Non Alcoholic Bev.	Alcoholic Beverage. Tobacco and Kola	Clothing and Footwear	Housing Water, Electricity. Gas and Other Fuel	Furnishings & Household Equipment Maintenance.	Health.	Transport	Communication	Recreation & Culture.	Education	Restaurant & Hotels	Miscellaneous Goods & Services	Month-on (%)	Year-on (%)	12-month average (%)
Weights		1000	575.22	440.93	155.13	476.82	490.59	11.19	65.5	191.51	49.74	27.4	74.54	10.14	7.2	40.05	14.49	17.65			
Please note that the above weights are only expenditure weights which are still adjusted by population across 37 states. They should not be taken as the final weights in the computation of the CPI																					
2011	Jan	110.7	108.5	106.0	67.2	111.7	116.5	107.8	114.9	110.8	112.4	111.6	108.3	105.8	108.1	111.2	113.2	111.6	-1.4	7.9	10.8
	Feb	114.2	114.1	114.4	117.6	115.5	115.2	110.2	115.1	115.5	114.4	118.6	111.6	101.9	103.7	111.7	114.9	114.6	3.2	9.4	10.6
	Mar	115.0	114.9	114.2	118.0	116.0	116.3	109.8	115.7	118.2	115.1	120.5	111.9	101.8	105.1	111.6	115.9	113.8	0.7	8.5	10.3
	Apr	115.5	116.3	116.1	114.9	116.4	115.5	112.3	116.3	116.1	114.8	117.8	112.2	102.5	106.1	111.6	115.1	115.5	0.5	9.1	10.0
	May	115.8	116.8	116.7	116.0	116.7	116.2	112.9	117.2	116.0	116.4	120.1	116.2	102.8	105.6	111.7	115.9	114.7	0.2	11.5	10.2
	Jun	116.6	116.6	116.3	112.4	118.0	117.2	112.1	117.2	116.3	115.4	121.1	116.5	102.0	106.5	111.7	116.8	114.7	0.7	8.3	10.0
	Jul	116.3	116.8	115.6	111.8	118.0	117.6	112.2	117.4	118.3	116.7	118.8	119.0	103.4	104.9	112.5	117.3	115.8	-0.3	6.6	9.7
	Aug	118.3	118.7	117.8	113.4	119.9	119.1	113.8	117.9	119.9	119.7	121.1	122.1	103.4	107.9	112.6	116.1	116.9	1.7	7.1	9.4
	Sep	120.0	121.3	119.6	115.5	120.7	119.8	114.1	118.4	124.8	120.2	123.6	121.3	103.7	108.2	113.2	117.7	117.2	1.4	8.4	9.2
	Oct	119.9	121.2	119.1	115.5	120.9	120.0	114.6	119.1	125.6	120.3	121.7	121.3	104.3	111.1	113.2	118.8	116.7	-0.1	7.8	8.9
	Nov	120.0	121.1	118.9	119.0	120.8	119.7	115.5	120.9	125.1	119.7	123.3	122.8	105.0	108.6	113.7	119.0	120.5	0.1	7.4	8.5
	Dec	122.3	122.0	119.6	121.1	124.5	123.8	115.2	120.2	128.0	119.2	122.1	128.2	104.6	107.9	114.6	121.1	117.4	2.0	9.0	8.4
2012	Jan	128.9	128.2	127.4	113.4	125.5	127.1	119.3	119.7	135.4	120.6	123.3	127.4	105.9	108.9	114.9	123.4	119.9	5.3	16.4	9.1
	Feb	129.2	128.4	127.5	113.5	126.3	126.2	119.3	119.7	135.5	120.6	123.3	127.5	105.9	108.9	114.9	123.4	119.9	0.3	13.1	9.4
	Mar	130.7	132.6	132.1	129.5	129.1	128.9	113.2	135.2	136.9	127.4	129.0	137.6	110.6	115.1	124.2	122.9	131.4	1.2	13.7	9.9
	Apr	131.1	133.0	132.6	130.7	129.4	129.2	114.6	136.3	136.9	128.1	129.4	137.6	111.1	116.4	124.4	123.1	132.3	0.3	13.4	10.3
	May	132.1	134.0	133.6	132.1	131.1	130.9	115.5	136.8	137.2	128.4	130.1	138.2	111.7	117.8	125.3	123.5	133.0	0.8	14.1	10.5
	Jun	134.1	135.8	134.0	132.1	131.4	131.3	116.1	137.0	146.5	128.3	130.4	138.3	112.1	117.6	125.5	123.7	133.4	1.5	15.0	11.1
	Jul	134.5	135.5	133.6	132.4	131.7	131.6	116.4	137.0	146.9	128.5	130.8	138.7	112.2	118.4	125.9	124.2	133.6	0.2	15.6	11.8
	Aug	135.4	136.7	134.3	133.8*	132.5	132.4*	117.0	137.9	148.3	129.5	131.5	139.6	112.6	119.3	126.1	126.0	134.8	0.7	14.5*	12.4
	Sep	137.0	137.7	135.4	133.9	134.2	134.0	117.3	138.9	151.1	130.3	132.3	140.4	113.3	121.0	126.6	126.2	136.1	1.2	14.2	12.9
	Oct	138.2	138.3	135.6	134.5	135.3	135.1	117.6	139.7	152.9	131.2	133.0	141.5	113.6	121.9	127.9	126.8	136.9	0.9	15.3	13.5
	Nov	139.0	138.9	136.1	134.5	136.2	136.0	118.1	140.1	154.2	131.8	133.3	142.1	113.7	122.8	128.6	127.2	137.0	0.6	15.8	14.2

Table 3 Urban Consumer Price Index (Base November 2009 = 100)

		All Items	All Items less Farm Produce.	All Items less Farm Produce. and Energy	Imported Food	Food	Food & Non Alcoholic Bev.	Alcoholic Beverage. Tobacco and Kola	Clothing and Footwear	Housing Water, Electricity. Gas and Other Fuel	Furnishings & Household Equipment Maintenance.	Health.	Transport	Communication	Recreation & Culture.	Education	Restaurant & Hotels	Miscellaneous Goods & Services	Month-on (%)	Year-on (%)	12-month average (%)
Weights		1000	575.22	440.93	155.13	476.82	490.59	11.19	65.5	191.51	49.74	27.4	74.54	10.14	7.2	40.05	14.49	17.65			
Please note that the above weights are only expenditure weights which are still adjusted by population across 37 states. They should not be taken as the final weights in the computation of the CPI																					
	Dec	140.0	139.8	136.9	136.7	137.6	137.3	118.8	141.2	155.1	132.1	133.6	143.1	113.8	122.8	129.0	127.3	137.2	0.8	14.5	14.6
2013	Jan	140.8	142.3	137.9	137.8	138.6	138.4	120.0	141.8	155.4	132.4	134.0	143.6	113.9	122.9	129.4	127.5	137.6	0.5	9.2	14.0
	Feb	142.0	142.3	137.9	137.9	139.9	139.6	121.0	143.0	156.7	133.3	135.3	144.9	114.3	124.1	130.5	128.6	138.9	0.9	9.8	13.7
	Mar	142.8	142.0	139.3	138.5	140.7	140.5	121.7	144.0	157.5	134.2	136.3	145.9	114.9	124.8	131.5	129.1	140.0	0.6	9.3	13.3
	Apr	143.7	142.6	140.1	138.6	142.0	141.7	122.5	144.7	158.3	134.6	136.7	146.3	115.0	125.4	131.6	129.3	140.3	0.6	9.7	13.0
	May	144.5	142.7	138.7	139.0	142.7	142.5	122.9	145.8	158.8	135.6	137.8	147.3	115.5	126.3	132.8	130.4	141.6	0.6	9.4	12.6
	Jun	145.5	143.1	139.1	140.4	143.9	143.6	123.6	146.5	159.9	135.9	138.6	148.1	115.7	126.6	133.0	131.3	142.1	0.7	8.4	12.0
	Jul	146.3	145.4	142.9	141.5	145.0	144.7	123.9	147.2	160.8	136.5	139.2	148.9	116.1	127.2	133.2	131.7	142.4	0.6	8.8	11.4
	Aug	146.8	147.7	144.1	142.6	145.8	145.5	124.1	147.2	160.8	136.7	139.3	149.1	116.2	127.2	133.3	132.1	142.7	0.3	8.4	10.9
	Sep	147.9	147.7	145.3	143.7	147.1	146.8	125.3	148.5	161.7	137.6	140.2	150.2	116.8	128.4	134.5	133.2	143.7	0.8	8.0	10.4
	Oct	149.1	148.6	146.0	145.0	148.3	148.0	126.2	149.8	162.6	138.5	141.4	151.4	117.7	129.5	135.6	134.4	145.0	0.8	7.9	9.8
	Nov	150.2	149.4	146.7	145.8	149.6	149.3	127.0	151.0	163.8	139.0	142.0	152.4	118.1	130.3	136.7	135.4	145.9	0.8	8.1	9.2
	Dec	151.4	150.4	147.7	146.7	151.0	150.6	127.6	152.2	164.9	139.8	142.7	153.4	118.7	131.1	137.7	135.9	146.8	0.8	8.1	8.8
2014	Jan	152.2	150.7	147.6	147.7	152.3	151.9	128.4	153.0	165.2	140.7	143.4	153.6	118.7	131.7	137.8	136.1	147.1	0.6	8.2	8.7
	Feb	153.0	151.6	148.9	148.6	153.2	152.8	128.9	153.6	165.8	141.1	144.4	154.4	119.2	132.4	138.4	136.5	147.5	0.5	7.8	8.5
	Mar	154.2	152.1	149.7	149.8	154.7	154.4	129.6	154.1	166.7	142.1	145.2	155.3	119.9	133.6	139.2	137.4	148.3	0.8	7.9	8.4
	Apr	155.1	152.6	150.0	150.7	156.1	155.7	130.5	154.7	167.4	142.7	145.5	155.7	120.2	134.5	139.8	138.4	149.5	0.6	7.9	8.2
	May	156.4	153.6	150.8	151.8	157.4	157.0	131.1	156.1	168.5	143.8	146.5	156.9	120.7	135.4	140.7	139.6	150.7	0.8	8.2	8.2

4. Inflation -Urban All Items (%)

— Year-on Rate — 12-Month Average

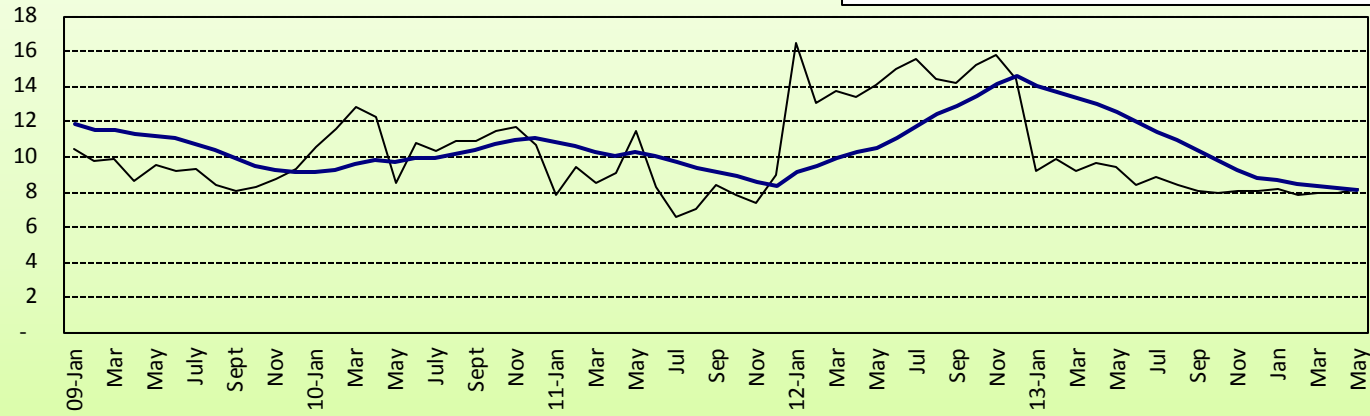


Table 4 Rural Consumer Price Index (Base November 2009 = 100)

		All Items	All Items less Farm Produce.	All Items less Farm Produce. and Energy	Imported Food	Food	Food & Non Alcoholic Bev.	Alcoholic Beverage. Tobacco and Kola	Clothing and Footwear	Housing Water, Electricity. Gas and Other Fuel	Furnishings & Household Equipment Maintenance.	Health.	Transport	Communication	Recreation & Culture.	Education	Restaurant & Hotels	Miscellaneous Goods & Services	Month-on (%)	Year-on (%)	12-month average (%)
Weights		1000.0	503.1	417.4	113.7	532.3	540.9	10.6	85.7	147.2	50.7	32.2	57.2	4.0	6.7	38.9	10.1	15.8			
2009	Jan	88.9	88.5	90.0		89.1	89.1	97.5	96.2	87.1	81.7	97.9	86.6	95.2	91.2	84.5	97.8	92.1	0.8	15.9	12.1
	Feb	89.5	89.5	90.2		89.6	89.6	98.3	95.7	89.0	81.9	99.0	85.6	95.2	89.7	85.4	98.8	93.1	0.7	17.2	13.1
	Mar	90.2	89.8	90.8		90.5	90.5	98.0	96.1	88.8	82.5	99.6	85.7	95.2	90.2	87.0	97.9	94.7	0.7	16.7	13.9
	Apr	90.7	90.2	91.7		91.3	91.3	98.0	96.2	88.5	84.4	102.4	92.0	95.2	90.8	88.9	99.5	95.3	0.6	15.7	14.6
	May	92.6	92.3	93.8		93.3	93.3	98.8	96.5	89.7	84.2	100.2	94.0	95.2	91.9	88.4	98.0	91.3	2.1	15.1	15.1
	June	94.4	93.7	95.1		95.4	95.3	98.6	97.1	93.4	84.8	100.8	89.6	95.2	92.1	88.6	98.2	97.5	1.9	12.2	15.1
	July	96.5	95.5	97.5		97.7	97.7	100.4	95.7	95.9	99.6	102.5	87.2	98.3	94.7	90.4	98.3	99.0	2.3	12.0	14.8
	Aug	97.8	96.1	96.9		98.8	98.7	99.6	98.3	95.6	100.6	103.0	89.9	100.9	96.2	101.3	98.9	100.1	1.3	12.4	14.8
	Sep	98.5	97.4	98.2		99.4	99.3	98.6	98.4	96.8	97.2	103.9	93.2	100.9	95.8	99.8	100.1	99.6	0.7	11.5	14.7
	Oct	99.2	98.4	99.0		100.0	100.0	99.5	98.9	97.9	98.0	104.4	94.6	100.0	96.0	96.6	99.6	98.9	0.7	13.2	14.5
	Nov	100.0	100.0	100.0	100.0	100.0	100.0	100.0	100.0	100.0	100.0	100.0	100.0	100.0	100.0	100.0	100.0	100.0	0.8	14.2	14.3
	Dec	102.8	101.7	102.1	102.3	103.1	103.5	103.5	102.0	99.2	102.4	102.0	101.6	100.6	99.9	102.1	102.0	101.9	2.8	16.6	14.3
2010	Jan	103.6	101.9	102.4	102.2	104.4	104.9	103.6	101.8	98.9	103.9	103.5	102.7	99.5	100.7	103.6	105.5	103.7	0.8	16.5	14.4
	Feb	105.6	103.8	104.7	103.3	106.4	106.9	103.5	103.3	100.6	105.5	104.5	105.3	100.5	99.5	104.3	106.0	105.6	1.9	17.9	14.5
	Mar	104.0	102.8	103.5	102.6	104.6	104.9	104.7	103.3	100.0	105.3	104.0	102.1	100.4	100.1	104.4	104.0	103.0	-1.5	15.3	14.4
	Apr	105.6	103.6	104.7	106.6	106.8	107.2	105.6	104.3	100.8	102.3	103.3	106.8	100.0	98.7	104.7	108.2	105.5	1.5	16.4	14.5
	May	107.2	106.5	107.9	105.4	107.2	107.5	105.3	106.8	104.6	102.3	105.4	106.6	99.4	101.8	111.0	110.7	109.1	1.6	15.8	14.5
	Jun	109.6	107.8	109.2	109.2	111.2	111.5	109.9	109.4	104.4	112.4	108.9	108.4	101.0	101.5	106.4	105.4	109.9	2.2	16.1	14.9
	Jul	110.7	107.6	109.2	109.5	112.6	113.2	109.9	110.2	106.2	109.6	109.2	105.9	101.4	103.1	104.9	103.9	110.7	0.9	14.6	15.1
	Aug	113.0	109.6	110.8	111.4	114.7	115.2	114.2	113.4	108.9	109.9	111.8	107.4	100.4	103.9	104.3	103.7	110.7	2.1	15.6	15.3
	Sep	113.8	111.7	112.7	114.1	115.1	114.5	110.9	112.4	113.1	113.5	113.6	112.2	102.2	106.9	109.0	107.0	113.8	0.7	15.6	15.7
	Oct	114.0	113.5	113.6	113.9	114.4	114.5	113.5	113.9	111.2	116.4	118.1	108.1	104.1	110.0	111.5	110.6	110.5	0.1	15.0	15.8
	Nov	113.6	112.1	111.5	116.5	115.7	115.4	114.0	111.8	113.9	114.8	110.5	112.8	102.7	106.2	107.5	108.5	112.6	-0.3	13.6	15.7

Table 4 Rural Consumer Price Index (Base November 2009 = 100)

		All Items	All Items less Farm Produce.	All Items less Farm Produce. and Energy	Imported Food	Food	Food & Non Alcoholic Bev.	Alcoholic Beverage. Tobacco and Kola	Clothing and Footwear	Housing Water, Electricity. Gas and Other Fuel	Furnishings & Household Equipment Maintenance.	Health.	Transport	Communication	Recreation & Culture.	Education	Restaurant & Hotels	Miscellaneous Goods & Services	Month-on (%)	Year-on (%)	12-month average (%)
Weights		1000.0	503.1	417.4	113.7	532.3	540.9	10.6	85.7	147.2	50.7	32.2	57.2	4.0	6.7	38.9	10.1	15.8			
2011	Dec	115.9	113.8	113.7	117.0	117.1	117.2	113.7	113.6	114.3	114.7	112.6	114.0	103.6	106.6	109.0	108.2	111.5	2.0	12.7	15.4
	Jan	119.7	119.5	118.9	120.1	116.5	120.5	113.0	114.0	116.4	114.5	111.1	110.0	101.8	108.5	109.4	108.2	114.5	3.3	15.6	15.3
	Feb	118.8	116.7	116.4	129.4	119.4	120.2	116.1	116.8	114.1	116.6	111.4	121.9	107.4	108.4	109.7	110.1	113.8	-0.8	12.5	14.9
	Mar	121.1	119.6	120.2	120.6	119.9	119.8	115.2	117.3	114.2	116.6	115.0	118.4	107.8	109.2	110.6	109.1	111.9	1.9	16.4	15.0
	Apr	119.4	119.2	119.4	122.6	121.1	120.10	116.4	116.1	125.1	116.0	116.7	116.9	107.2	107.8	111.2	111.9	114.1	-1.3	13.1	14.7
	May	121.2	120.6	120.8	124.4	120.1	120.40	116.9	119.0	125.5	116.7	113.8	115.4	108.1	108.8	112.1	112.0	116.4	1.5	13.0	14.5
	Jun	122.6	122.4	122.8	111.5	121.9	121.49	116.0	118.6	126.0	117.1	118.8	120.1	108.7	109.2	112.6	112.1	120.6	1.1	11.8	14.1
	Jul	123.6	122.8	123.4	113.3	122.4	122.45	112.5	117.9	126.0	118.2	117.9	122.1	108.5	116.2	112.8	113.1	123.2	0.8	11.7	13.8
	Aug	125.6	123.3	123.8	118.1	126.9	127.0	118.6	119.4	128.4	120.1	119.9	121.8	108.8	110.9	113.2	114.2	125.4	1.6	11.1	13.5
	Sep	127.4	125.3	125.3	119.4	128.2	128.0	118.0	121.2	127.2	118.4	121.3	123.1	108.3	111.0	114.2	114.0	125.2	1.4	11.9	13.2
	Oct	128.6	127.8	128.0	118.1	128.4	127.9	120.1	121.8	131.0	118.8	121.8	123.0	108.6	122.1	114.6	114.8	126.4	0.9	12.8	13.0
	Nov	128.6	127.4	127.3	128.6	129.1	129.6	121.8	122.6	130.5	120.7	122.2	123.7	108.9	121.6	114.6	115.1	129.7	0.0	13.1	13.0
Dec	129.0	127.1	127.0	128.8	131.1	131.1	122.2	124.1	135.1	120.6	123.4	129.2	108.1	117.9	114.6	117.0	127.1	0.3	11.3	12.8	
2012	Jan	131.3	129.9	130.7	128.4	132.4	134.0	126.4	122.3	128.7	120.6	122.2	128.2	111.0	119.2	115.2	117.2	130.8	1.8	9.7	12.3
	Feb	131.6	130.0	130.9	128.4	131.8	131.7	126.4	122.3	128.8	120.6	122.2	128.2	111.0	119.2	115.2	117.2	130.8	0.3	10.9	12.2
	Mar	134.4	137.1	136.5	130.3	134.9	134.7	127.4	132.3	142.7	133.2	130.2	130.0	114.6	117.9	126.7	120.2	131.7	2.1	11.0	11.8
	Apr	134.4	137.0	136.5	131.8	135.0	134.8	127.7	132.0	142.3	133.6	130.7	130.3	115.1	118.3	125.5	121.0	131.8	0.01	12.5	11.7
	May	135.4	138.9	138.5	132.9	136.5	136.3	128.1	132.6	142.6	133.9	131.3	130.7	115.3	118.8	125.7	121.9	132.2	0.74	11.7	11.6
	Jun	136.5	139.8	138.1	133.0	137.4	137.2	128.5	132.6	146.3	134.3	131.6	131.3	115.7	119.0	125.9	122.6	132.5	0.83	11.4	11.6
	Jul	136.9	140.4	138.9	133.3	138.0	137.7	129.0	132.9	146.4	134.2	131.6	131.6	115.8	119.1	125.8	122.9	132.7	0.25	10.7	11.5
	Aug	137.8	140.9*	139.4	134.5	139.1	138.9	129.4	133.5	147.2	134.7	132.2*	132.1	116.0	119.3	126.6	123.0	132.8	0.65*	9.7	11.4
	Sep	139.0	141.3	139.6	134.4	140.6	140.3	130.0	134.2	148.9	135.7	132.4	132.9	116.2	120.0	126.8	124.0	132.9	0.89	9.1	11.1
	Oct	140.2	141.9	140.1	136.0	142.0	141.8	131.0	135.5	149.9	136.0	133.0	134.0	116.6	120.7	128.2	124.3	134.0	0.88	9.1	10.8
	Nov	141.1	142.5	141.0	137.7	143.2	142.9	132.0	136.3	150.3	136.7	133.7	134.2	116.8	120.8	129.0	124.5	134.5	0.63	9.8	10.5

Table 4 Rural Consumer Price Index (Base November 2009 = 100)

		All Items	All Items less Farm Produce.	All Items less Farm Produce. and Energy	Imported Food	Food	Food & Non Alcoholic Bev.	Alcoholic Beverage. Tobacco and Kola	Clothing and Footwear	Housing Water, Electricity. Gas and Other Fuel	Furnishings & Household Equipment Maintenance.	Health.	Transport	Communication	Recreation & Culture.	Education	Restaurant & Hotels	Miscellaneous Goods & Services	Month-on (%)	Year-on (%)	12-month average (%)
Weights		1000.0	503.1	417.4	113.7	532.3	540.9	10.6	85.7	147.2	50.7	32.2	57.2	4.0	6.7	38.9	10.1	15.8			
	Dec	142.1	143.5	141.9	138.3	144.5	144.2	132.8	137.1	151.1	136.9	134.1	135.7	117.0	121.2	129.1	125.2	135.0	0.73	10.2	10.5
2013	Jan	143.2	144.9	142.4	139.5	145.7	145.4	133.6	138.4	152.0	138.5	134.5	136.1	117.1	121.4	129.2	125.6	135.2	0.73	9.1	10.4
	Feb	144.1	144.9	142.7	140.1	146.4	146.1	134.7	139.7	153.4	139.7	135.6	137.3	117.6	122.4	129.9	126.6	136.2	0.65	9.5	10.3
	Mar	145.3	147.1	145.9	140.0	148.2	147.9	135.4	139.8	153.9	139.8	136.5	137.5	117.9	122.6	131.0	126.5	137.7	0.82	8.1	10.0
	Apr	146.4	146.5	144.4	140.5	149.2	148.9	136.2	141.2	154.7	142.2	137.9	139.0	118.0	124.5	132.8	127.3	139.1	0.76	8.9	9.7
	May	147.1	147.2	144.5	140.9	149.8	149.5	137.1	142.3	155.3	143.0	139.3	139.9	118.4	125.2	133.5	128.1	139.9	0.50	8.6	9.5
	Jun	147.9	147.6	144.8	142.2	150.8	150.5	137.5	142.7	155.9	143.9	140.0	140.2	118.7	125.8	133.6	128.4	140.3	0.54	8.3	9.2
	Jul	148.6	148.8	146.9	143.2	151.7	151.4	138.4	143.4	156.6	144.2	140.6	140.6	119.0	126.0	133.8	129.2	140.7	0.50	8.6	9.1
	Aug	148.9	150.2	148.2	143.7	152.3	152.0	138.8	143.5	156.2	144.3	140.7	140.6	119.1	126.1	134.1	129.2	140.8	0.20	8.1	8.9
	Sep	150.0	151.9	149.9	144.7	153.6	153.3	139.5	144.3	157.1	145.0	141.4	141.5	119.6	126.5	135.2	130.2	141.6	0.74	8.0	8.8
	Oct	151.1	152.8	150.8	145.9	154.8	154.5	140.7	145.4	157.9	146.2	142.5	142.5	120.5	127.4	136.4	131.2	142.8	0.73	7.8	8.7
	Nov	152.2	153.8	151.9	146.8	156.0	155.7	141.3	146.4	158.8	147.3	143.2	143.2	120.9	128.2	137.2	132.1	144.1	0.68	7.8	8.6
	Dec	153.3	155.2	153.4	148.0	157.4	157.0	142.0	147.5	159.5	148.5	144.1	144.1	121.3	129.0	138.0	133.3	145.2	0.76	7.9	8.4
2014	Jan	154.4	155.5	153.3	149.0	158.6	158.3	142.7	148.4	160.2	149.2	144.9	145.3	122.1	130.2	138.7	134.0	146.1	0.68	7.8	8.3
	Feb	155.1	156.1	154.2	149.6	159.5	159.2	143.2	149.2	160.7	149.9	145.4	145.9	122.3	131.3	138.9	134.4	146.4	0.49	7.7	8.1
	Mar	156.4	156.8	154.9	150.7	161.2	160.8	144.0	149.9	161.6	150.8	146.4	146.9	122.8	131.8	139.5	135.2	147.2	0.81	7.6	8.1
	Apr	157.3	157.6	155.7	151.5	162.3	162.0	144.7	150.7	162.3	151.3	146.9	147.6	123.4	132.5	139.9	135.7	147.4	0.59	7.5	8.0
	May	158.5	158.6	156.7	152.8	163.6	163.2	145.6	152.1	163.4	152.6	148.0	148.6	124.0	133.5	141.0	136.9	148.6	0.77	7.8	7.9

NB: *indicates class indices adjusted due to rounding errors

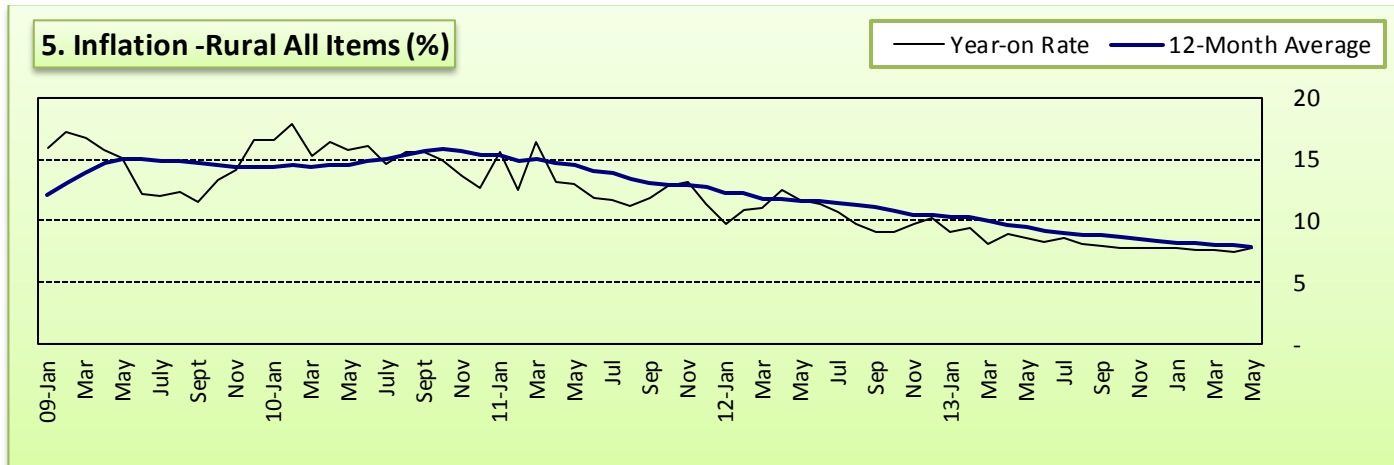


Table 5 Combined Urban And Rural State Consumer Price Index

(Base Period: November 2009 = 100)

State	May-13		Apr-14		May-14	
	Food	All Items	Food	All Items	Food	All Items
Abia	146.2	147.8	164.2	157.2	166.5	159.0
Abuja	121.1	137.4	153.1	156.0	153.9	156.5
Adamawa	141.0	134.9	156.1	154.6	158.8	154.1
Akwalbom	157.0	146.8	160.0	153.9	162.4	155.9
Anambra	129.7	153.7	150.6	149.9	151.1	150.6
Bauchi	153.7	155.6	149.9	155.6	150.6	157.4
Bayelsa	248.9	218.5	164.0	163.2	165.3	162.4
Benue	190.2	155.6	172.6	161.4	175.3	164.2
Borno	127.3	150.9	160.4	152.9	161.3	153.9
Cross River	189.7	161.1	155.8	158.4	157.5	157.9
Delta	172.3	155.6	154.9	152.5	155.8	154.1
Ebonyi	137.4	147.9	155.1	154.0	156.0	155.5
Edo	192.5	182.5	152.7	169.3	154.6	171.7
Ekiti	119.8	142.7	153.3	153.8	154.6	154.7
Enugu	136.8	144.9	154.6	149.2	156.8	152.5
Gombe	146.7	148.8	161.7	158.1	162.0	159.4
Imo	152.0	142.2	157.5	154.5	158.6	155.1
Jigawa	124.3	129.9	161.2	156.4	161.7	158.8
Kaduna	135.4	135.7	162.6	157.4	163.4	158.6
Kano	117.3	124.3	156.5	152.7	158.0	156.1
Katsina	127.0	122.5	157.5	144.5	159.1	144.8
Kebbi	125.3	129.1	153.5	153.3	154.0	154.7
Kogi	202.0	201.9	212.0	199.9	213.6	200.7
Kwara	137.3	163.3	162.5	182.3	162.7	183.7
Lagos	127.5	139.1	167.5	165.4	168.2	166.5
Nassarawa	125.3	129.8	148.6	149.9	150.0	151.3
Niger	127.7	132.0	154.4	159.0	154.7	159.9
Ogun	131.2	137.2	156.5	159.9	159.2	160.9
Ondo	126.8	131.1	163.6	159.3	164.6	160.4

Osun	124.8	136.8	158.0	158.7	159.5	159.6
Oyo	171.4	162.9	171.1	165.8	173.2	166.3
Plateau	129.8	134.9	163.3	160.8	163.7	161.2
Rivers	181.2	161.4	161.5	155.3	163.0	155.6
Sokoto	115.1	127.8	151.8	150.4	152.5	152.2
Taraba	148.2	142.3	161.7	156.1	162.7	158.2
Yobe	132.7	141.8	160.9	157.5	162.2	159.1
Zamfara	125.0	128.1	159.2	155.4	160.9	156.2
Note: Indices may not be used for inter-state price comparison because market baskets differ from State to State						