

CONSUMER PRICE INDEX
(BASE PERIOD NOVEMBER 2009 = 100)



NATIONAL BUREAU OF STATISTICS

No. 528
March 2014

BRIEF METHODOLOGY:

The CPI measures the average change over time in prices of goods and services consumed by people for day-to-day living. The construction of the CPI combines economic theory, sampling and other statistical techniques using data from other surveys to produce a weighted measure of average price changes in the Nigerian economy. The weighting occurs to capture the importance of the selected commodities in the entire index. The production of the CPI requires skills of economists, statisticians, computer scientists, data collectors and others.

Key in the construction of the price index is the selection of the market basket of goods and services. Every month, 10,534 informants spread across the country provide price data for the computation of the CPI. The market items currently comprise of 740 goods and services regularly priced.

The first stage in the calculation of the CPI is the collection of prices on each item (740 goods and services) from outlets in each sector (rural or urban) for each state. Prices are then averaged for each item according to sector across the state. The next step is to use the average price to calculate the basic index for each commodity: The current year price of each commodity is compared with a base year's price to obtain a relative price.

Next we use the Laspeyres formula to compute an aggregated index for each class (which has a multitude of commodities which have similar consumption purposes): Here the sum of the product of weights

(obtained from the expenditure survey) and relative prices for each item is divided by the sum of the weight of the items in that class, and the result multiplied by 100 gives the required index number. This index number is still classified according to the urban or rural classification sector for each of the 36 states and the FCT. This yields 85 classes then 48 groups which are then reclassified into 12 Divisions to derive:

1. The country composite index
2. The Urban National index
3. The Rural National index
4. The Combined Urban and Rural State Composite index

The survey methodology generates 3774 all items indices for all states and the FCT.

This edition of the Statistical News contains the revised Consumer Price Index (CPI) based on Nigeria Living Standard Survey (NLSS) 2003/2004. The consumption expenditure data were re-valued to November 2009, which is the base period for the revised CPI.

The May 2003 and September 1985 based indices are being continued using factors derived from the new CPI. All of these indices will yield the same price change for any commodity group contained in all the series. A new sub index – Imported Food Index- is available in the revised CPI.

Note: The urban and rural indices were weighted with the ratio of their populations to the national i.e. 0.455 and 0.545 respectively to compute the composite indices at the 12 COICOP functions and all items

levels. This may cause variance between a recalculated all items index using the weights published on table 2 and the published all items index because the published weights

were computed only from consumption expenditure survey result. The following breakdown highlights a non-exhaustive list of the components of the current CPI:

FOOD AND NON ALCOHOLIC BEVERAGES

Food
Bread and cereals
Meat
Fish
Milk, cheese and eggs
Oils and fats
Fruit
Vegetables
Potatoes, Yam & other tubers
Food products n.e.c
Coffee, tea and cocoa
Soft drinks

ALCOHOLIC BEVERAGES, TOBACCO AND KOLA

Spirits
Wine
Tobacco
Narcotics

CLOTHING AND FOOTWEAR

Clothing materials, other articles of clothing
Garments
Cleaning, repair and hire of clothing
Shoes and other footwear
Repair and hire of footwear

HOUSING, WATER, ELECTRICITY, GAS

Actual and imputed rentals for housing
Water supply
Miscellaneous services relating to the dwelling
Electricity
Gas
Liquid fuel
Solid fuels

FURNISHINGS, HOUSEHOLD EQUIPMENT

Furniture and furnishings
Carpets and other floor coverings
Repair of Furniture
Household textiles
Major household appliances whether electric or not
Repair of household appliances

Glassware, tableware and household utensils
Non-durable household goods
Domestic services and household services
HEALTH
Pharmaceutical products
Medical services
Dental services
Paramedical services
Hospital services
TRANSPORT
Motor cars
Motor cycles
Bicycles
Vehicle spare parts
Fuels and lubricants for personal transportation
Maintenance and repair of personal transport
Passenger transport by road
Passenger transport by air
Passenger transport by sea and inland waterways
COMMUNICATION
Postal services
Telephone and telefax equipment
Telephone and telefax services
RECREATION AND CULTURE
Audio-visual, photographic and information processing equipments
Photographic development
Musical instrument
Recreational and sporting services
Games of chance
EDUCATION
Books & stationery
RESTAURANTS AND HOTELS
Catering services
Accommodation services
MISCELLANEOUS GOODS AND SERVICES
Hairdressing salons and personal grooming establishments
Appliances, articles and products for personal care
Jewellery, clocks and watches
Insurance
Other services.

ALL ITEMS INDEX

In March, the Consumer Price Index (CPI) which measures inflation, edged higher when compared with February. Prices rose by 7.8 percent (year-on-year) in March, marginally higher from 7.7 percent recorded in the previous month. Over the previous six month reporting period, inflation rates have been relatively stable, moving in a choppy fashion. Prices have moved in a 0.3 percentage point band ranging between 8.0 percent and 7.7 percent

Between October 2013 and March 2014, food prices have also been relatively stable, moving in a 0.1 percentage band between 9.3 percent and 9.2 percent. In March specifically, prices edged higher to 9.3 percent. Prices were pushed higher as a result of higher prices in the Bread and Cereals, Fish, dairy, Oils and fats, and Fruits classes. Prices in the food sub-index were however weighted down by relatively slower increases in the Meats, Vegetables, Potatoes, and Yams and Other tubers, classes.

Prices measured by the core sub-index increased at a slower rate in March, after picking up in February. Prices rose by 6.8 percent year-on-year, 0.4 percentage points lower from the year-on-year rate recorded in February.

It should be noted that the Headline Index is made up of the Core Index and Farm Produce items. As Processed Foods are included in both the Core and Food sub-indices, this implies that these sub-indices are not mutually-exclusive.

On a monthly basis, prices increased at a faster rate in March, compared to February. Prices increased by 0.78 percent in March, higher than rates recorded in February by 0.3 percentage points. This was also the

COMPOSITION OF THE MAJOR INDEX AND SUB-INDICES

All Items = Farm Produce + Core index

Food = Farm Produce + Processed Foods

Core = All Items – Farm Produce

highest month-on-month increase recorded in the previous year.

Urban prices increased at a faster rate in March relative to February. Prices increased by 7.9 percent (year-on-year), marginally higher from the 7.8 percent recorded the previous month. Rural prices also increased in March, albeit at a marginally lower rate compared to February. The Rural National CPI recorded a 7.6 per cent year-on-year change in March 2014, marginally lower from the 7.7 rate recorded in February.

On a monthly basis, price increases in the Urban All-items index eased for the third consecutive month in March, increasing by 0.8 per cent, 0.3 percentage points higher from February. The Rural All Items index also increased further increasing by 0.3 percentage points in March to 0.81 percent.

The percentage change in the average composite CPI for the twelve-month period ending in March 2014 over the average of the CPI for the previous twelve-month period was recorded at 8.2 percent, marginally lower from the 8.3 percent average twelve month rate of change recorded in February 2014. The corresponding 12-month year-on-year average percentage change for the Urban index was 8.4 percent, while the corresponding Rural index was recorded at 8.1 percent.

FOOD INDEX

As observed by the Food sub-index, food prices strengthened in March relative to February. Food prices increased at a rate of 9.3 percent in March 2014, marginally higher by 0.1 percentage points from rates recorded in February.

On a month-on-month basis, food prices increased by 1.0 percent in March, 0.4 percentage points higher from the 0.6 percent increase recorded in February. This was also the highest month-on-month increase recorded over the previous 12 month period.

On a month-on-month basis, the highest price increases were recorded in the Fish, Fruit; and Potatoes, Yams and Other tubers classes.

The average annual rate of change of the Food sub-index for the twelve-month period ending in March 2014 was 9.5 percent, relatively unchanged from the average annual rate of change of the 12 month period ending in February 2014.

ALL ITEMS LESS FARM PRODUCE

The “All items less Farm Produce” or Core index, which excludes the prices of volatile agricultural products increased at slower rate (year-on-year) in March 2014 when compared with February 2014. Prices increased by 6.8 percent, lower by 0.4 percentage points from the 7.2 percent rate recorded in February.

On a month-on-month basis, prices also eased in March, increasing by 0.4 percent. This was marginally lower from the 0.5 percent rate

recorded in February. The increase in the Core sub-index was as a result of price increases across various class items in particular; Wine, Carpets and other floor coverings; Repair of household appliances, and Fuels and lubricants for personal transport equipment. The average 12 month annual rate of rise of the index was recorded at 7.0 percent for the twelve-month period ending in March 2014, relatively unchanged from the previous 12 month rate of change recorded in February.

For enquiries relating to this CPI report, please contact:
ykale@nigerianstat.gov.ng and udeokenwa@yahoo.com

Follow us on twitter [@nigerianstat](https://twitter.com/nigerianstat) and online at www.nigerianstat.gov.ng

Table 1 Composite Consumer Price Index (Base November 2009 = 100)

		All Items Index (Farm Produce + All Items Less Farm Produce)					All Items less Farm Produce (includes Processed Food)				Food (Farm Produce + Processed Food)			
		Monthly	12-Month Average	Month-on change (%)	Year-on change (%)	12-Month average change (%)	Monthly	Month-on change (%)	Year-on change (%)	12-Month average change (%)	Monthly	Month-on change (%)	Year-on change (%)	12-Month average change (%)
Weights**		1000.0					513.10				507.06			
Please note that the above weights are only expenditure weights which are still adjusted by population across 37 states. They should not be taken as the final weights in the computation of the CPI														
2009	Jan	90.2	86.0	0.5	14.0	12.0	91.1	-0.1	8.0	5.5	89.5	0.9	18.4	16.5
	Feb	90.8	87.0	0.7	14.6	12.6	91.7	0.6	7.2	5.6	90.2	0.8	20.0	17.5
	Mar	91.4	87.9	0.6	14.4	13.1	92.0	0.3	11.8	6.5	90.9	0.8	16.2	17.7
	Apr	91.9	88.8	0.6	13.3	13.5	92.5	0.6	10.9	7.3	91.6	0.7	15.3	17.9
	May	93.6	89.8	1.8	13.2	13.8	94.2	1.8	9.9	7.8	93.5	2.0	15.7	17.9
	June	95.3	90.6	1.8	11.2	13.7	95.3	1.2	8.5	8.3	95.6	2.2	13.1	17.5
	July	97.3	91.4	2.1	11.1	13.4	96.8	1.5	8.3	8.6	97.9	2.4	12.9	16.8
	Aug	98.4	92.2	1.1	11.0	13.3	97.3	0.5	8.0	8.9	98.9	1.1	12.7	16.3
	Sep	98.9	93.0	0.5	10.4	13.1	98.1	0.8	7.4	8.9	99.5	0.6	12.5	15.9
	Oct	99.4	93.8	0.5	11.6	12.8	98.9	0.8	8.9	9.0	99.9	0.4	13.5	15.4
	Nov	100.0	94.7	0.7	12.4	12.6	100.0	1.1	10.7	9.1	100.0	0.1	13.5	15.0
	Dec	102.2	95.8	2.2	13.9	12.5	101.5	1.5	11.2	9.2	102.4	2.4	15.5	14.8
2010	Jan	103.1	96.9	1.0	14.4	12.6	102.1	0.6	12.1	9.6	103.7	1.3	15.9	14.7
	Feb	105.0	98.0	1.9	15.6	12.7	104.5	2.3	14.0	10.1	104.8	1.1	16.2	14.4
	Mar	104.9	99.2	-0.1	14.8	12.8	104.1	-0.4	13.2	10.3	105.3	0.4	15.8	14.4
	Apr	105.7	100.3	0.8	15.0	12.9	104.4	0.3	12.8	10.4	106.6	1.2	16.3	14.5

Table 1 Composite Consumer Price Index (Base November 2009 = 100)

		All Items Index (Farm Produce + All Items Less Farm Produce)					All Items less Farm Produce (includes Processed Food)				Food (Farm Produce + Processed Food)			
		Monthly	12-Month Average	Month-on change (%)	Year-on change (%)	12-Month average change (%)	Monthly	Month-on change (%)	Year-on change (%)	12-Month average change (%)	Monthly	Month-on change (%)	Year-on change (%)	12-Month average change (%)
Weights**		1000.0					513.10				507.06			
Please note that the above weights are only expenditure weights which are still adjusted by population across 37 states. They should not be taken as the final weights in the computation of the CPI														
	May	105.7	101.3	-0.04	12.9	12.9	105.2	0.8	11.7	10.6	105.7	-0.8	13.0	14.3
	Jun	108.8	102.4	2.91	14.1	13.1	107.4	2.1	12.7	10.9	110.0	4.1	15.1	14.4
	Jul	109.9	103.5	1.08	13.0	13.3	107.7	0.3	11.3	11.2	111.6	1.5	14.0	14.5
	Aug	111.9	104.6	1.76	13.7	13.5	109.3	1.5	12.4	11.5	113.8	2.0	15.1	14.7
	Sep	112.4	105.7	0.46	13.6	13.8	110.7	1.3	12.8	12.0	114.0	0.1	14.6	14.9
	Oct	112.7	106.9	0.30	13.4	13.9	111.9	1.1	13.2	12.3	114.0	-0.0	14.1	14.9
	Nov	112.8	107.9	0.04	12.8	13.9	111.7	-0.1	11.7	12.4	114.4	0.3	14.4	15.0
	Dec	114.2	108.9	1.29	11.8	13.7	112.6	0.7	10.9	12.4	115.4	0.9	12.7	14.7
2011	Jan	115.6	110.0	1.20	12.1	13.5	114.5	1.7	12.1	12.4	114.3	-0.9	10.3	14.2
	Feb	116.7	110.9	0.96	11.1	13.2	115.5	0.9	10.6	12.1	117.7	2.9	12.2	13.9
	Mar	118.3	112.1	1.37	12.8	13.0	117.5	1.7	12.8	12.1	118.1	0.4	12.2	13.6
	Apr	117.7	113.0	-0.54	11.3	12.7	117.9	0.3	12.9	12.1	119.0	0.7	11.6	13.2
	May	118.7	114.1	0.91	12.4	12.6	118.9	0.9	13.0	12.2	118.5	-0.3	12.2	13.2
	Jun	119.9	115.1	0.97	10.2	12.3	119.8	0.7	11.5	12.1	120.1	1.3	9.2	12.7
	Jul	120.3	115.9	0.32	9.4	12.0	120.1	0.2	11.5	12.1	120.4	0.2	7.9	12.1

Table 1 Composite Consumer Price Index (Base November 2009 = 100)

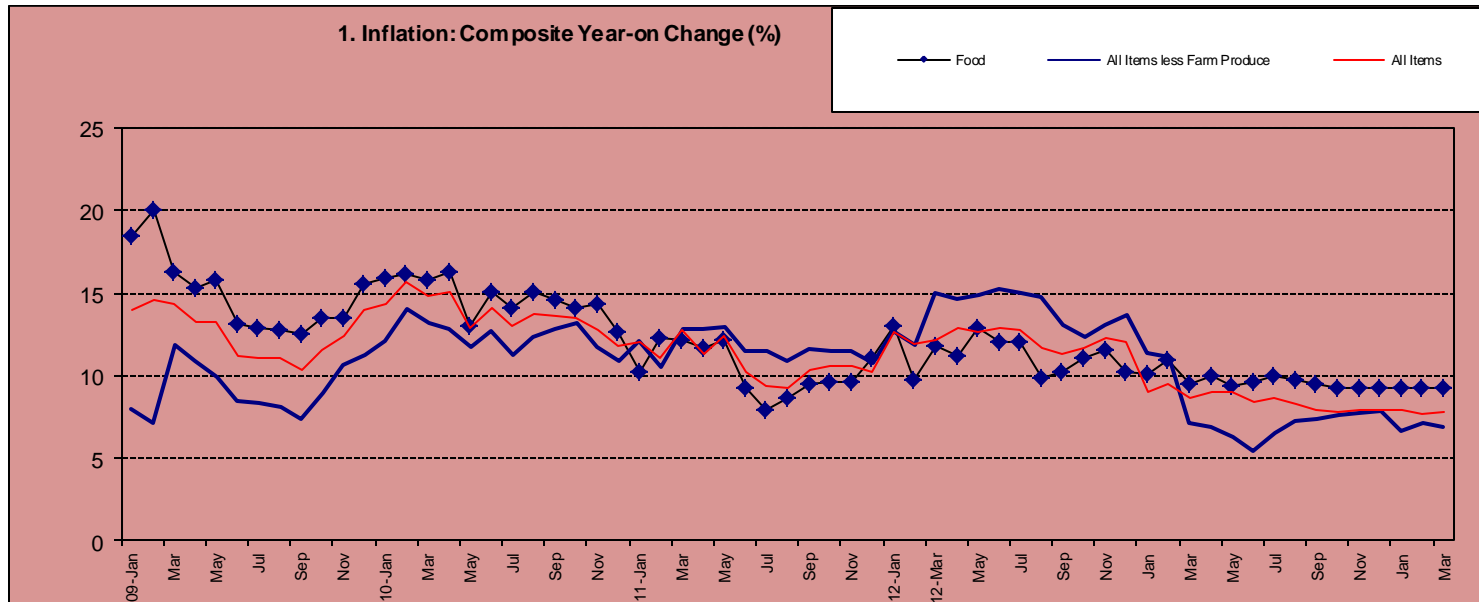
		All Items Index (Farm Produce + All Items Less Farm Produce)					All Items less Farm Produce (includes Processed Food)				Food (Farm Produce + Processed Food)			
		Monthly	12-Month Average	Month-on change (%)	Year-on change (%)	12-Month average change (%)	Monthly	Month-on change (%)	Year-on change (%)	12-Month average change (%)	Monthly	Month-on change (%)	Year-on change (%)	12-Month average change (%)
Weights**		1000.0					513.10				507.06			
Please note that the above weights are only expenditure weights which are still adjusted by population across 37 states. They should not be taken as the final weights in the computation of the CPI														
	Aug	122.3	116.8	1.67	9.3	11.6	121.2	0.9	10.9	12.0	123.7	2.7	8.7	11.6
	Sep	124.0	117.8	1.41	10.3	11.4	123.5	1.9	11.6	11.9	124.8	0.9	9.5	11.2
	Oct	124.6	118.8	0.49	10.5	11.1	124.8	1.1	11.5	11.7	125.0	0.2	9.7	10.8
	Nov	124.7	119.7	0.04	10.5	11.0	124.6	-0.2	11.5	11.7	125.4	0.3	9.6	10.4
	Dec	126.0	120.7	1.06	10.3	10.8	124.8	0.2	10.8	11.7	128.1	2.2	11.0	10.3
2012	Jan	130.2	121.9	3.35	12.6	10.9	129.1	3.5	12.7	11.8	129.3	0.9	13.1	10.5
	Feb	130.5	123.1	0.28	11.9	11.0	129.3	0.1	11.9	11.9	129.1	-0.1	9.7	10.3
	Mar	132.6	124.3	1.59	12.1	10.9	135.1	4.5	15.0	12.1	132.1	2.3	11.8	10.3
	Apr	132.8	125.5	0.13	12.9	11.1	135.2	0.1	14.7	12.2	132.3	0.2	11.2	10.3
	May	133.8	126.8	0.75	12.7	11.1	136.7	1.1	14.9	12.4	133.9	1.2	12.9	10.4
	Jun	135.3	128.1	1.15	12.9	11.3	138.0	1.0	15.2	12.7	134.5	0.5	12.0	10.6
	Jul	135.7	129.4	0.24	12.8	11.6	138.1	0.1	15.0	13.0	135.0	0.3	12.1	11.0
	Aug	136.6	130.6	0.67	11.7	11.8	139.0	0.6	14.7	13.3	135.9	0.7	9.9	11.1
	Sep	138.0	131.7	1.01	11.3	11.9	139.7	0.5	13.1	13.5	137.5	1.1	10.2	11.1
	Oct	139.2	133.0	0.88	11.7	11.9	140.3	0.4	12.4	13.5	138.8	1.0	11.1	11.2

Table 1 Composite Consumer Price Index (Base November 2009 = 100)

		All Items Index (Farm Produce + All Items Less Farm Produce)					All Items less Farm Produce (includes Processed Food)				Food (Farm Produce + Processed Food)			
		Monthly	12-Month Average	Month-on change (%)	Year-on change (%)	12-Month average change (%)	Monthly	Month-on change (%)	Year-on change (%)	12-Month average change (%)	Monthly	Month-on change (%)	Year-on change (%)	12-Month average change (%)
Weights**		1000.0					513.10					507.06		
Please note that the above weights are only expenditure weights which are still adjusted by population across 37 states. They should not be taken as the final weights in the computation of the CPI														
	Nov	140.0	134.2	0.60	12.3	12.1	140.9	0.4	13.1	13.6	139.8	0.7	11.6	11.4
	Dec	141.1	135.5	0.75	12.0	12.2	141.8	0.7	13.7	13.9	141.2	1.0	10.2	11.3
2013	Jan	141.9	136.5	0.62	9.0	11.9	143.8	1.4	11.3	13.7	142.3	0.8	10.1	11.1
	Feb	143.0	137.5	0.75	9.5	11.7	143.8	0.0	11.2	13.7	143.3	0.7	11.0	11.2
	Mar	144.0	138.4	0.71	8.6	11.4	144.8	0.7	7.2	13.0	144.6	1.0	9.5	11.0
	Apr	144.8	139.4	0.55	9.1	11.1	144.5	-0.2	6.9	12.3	145.6	0.6	10.0	10.8
	May	145.8	140.4	0.67	9.0	10.8	145.2	0.5	6.2	11.5	146.4	0.5	9.3	10.5
	Jun	146.6	141.4	0.59	8.4	10.4	145.5	0.3	5.5	10.7	147.5	0.7	9.6	10.4
	Jul	147.4	142.4	0.54	8.7	10.0	147.2	1.2	6.6	10.0	148.4	0.7	10.0	10.2
	Aug	147.8	143.3	0.25	8.2	9.8	149.1	1.3	7.2	9.4	149.2	0.5	9.7	10.2
	Sep	148.9	144.2	0.75	8.0	9.5	150.0	0.6	7.4	8.9	150.4	0.9	9.4	10.1
	Oct	150.0	145.1	0.75	7.8	9.2	150.9	0.6	7.6	8.6	151.6	0.8	9.2	10.0
	Nov	151.1	146.1	0.72	7.9	8.8	151.8	0.6	7.8	8.1	152.9	0.8	9.3	9.8
	Dec	152.3	147.0	0.78	8.0	8.5	153.0	0.8	7.9	7.7	154.3	0.9	9.3	9.7

Table 1 Composite Consumer Price Index (Base November 2009 = 100)

		All Items Index (Farm Produce + All Items Less Farm Produce)					All Items less Farm Produce (includes Processed Food)				Food (Farm Produce + Processed Food)			
		Monthly	12-Month Average	Month-on change (%)	Year-on change (%)	12-Month average change (%)	Monthly	Month-on change (%)	Year-on change (%)	12-Month average change (%)	Monthly	Month-on change (%)	Year-on change (%)	12-Month average change (%)
Weights**		1000.0					513.10				507.06			
Please note that the above weights are only expenditure weights which are still adjusted by population across 37 states. They should not be taken as the final weights in the computation of the CPI														
2014	Jan	153.3	147.9	0.64	8.0	8.4	153.3	0.2	6.6	7.3	155.5	0.8	9.3	9.6
	Feb	154.0	148.8	0.50	7.7	8.3	154.1	0.5	7.2	7.0	156.5	0.6	9.2	9.5
	Mar	155.2	149.8	0.78	7.8	8.2	154.7	0.4	6.8	7.0	158.0	1.0	9.3	9.5



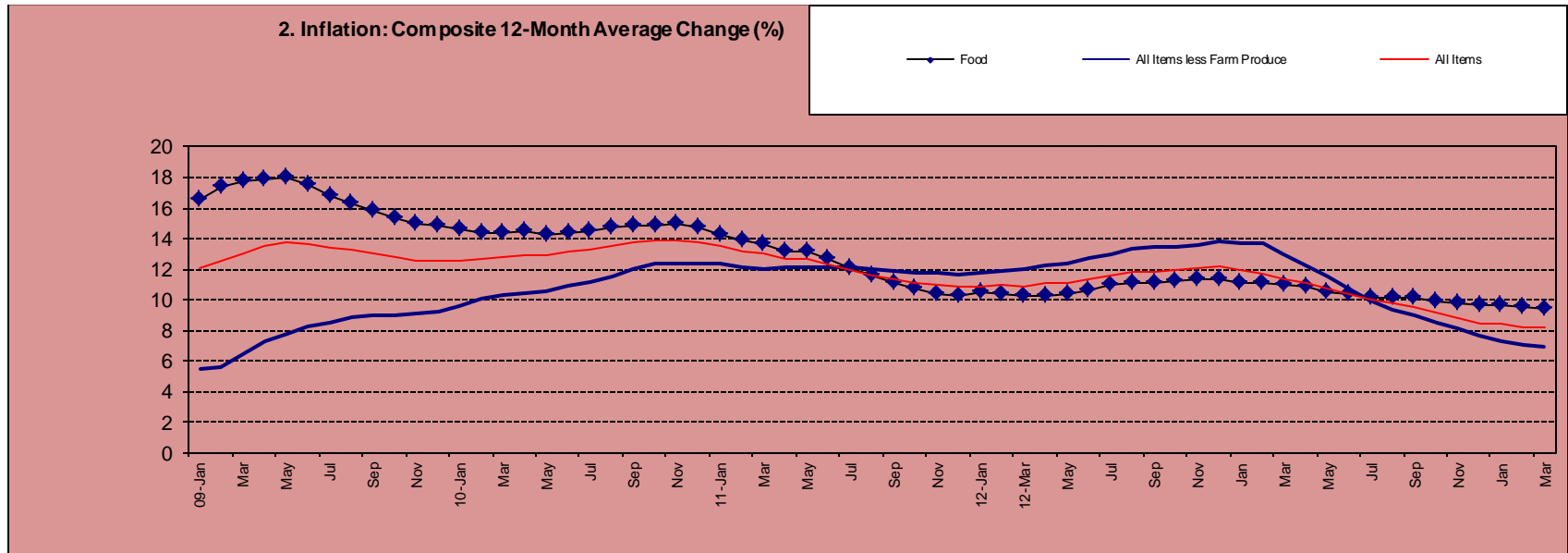


Table 2 Composite Consumer Price Index (Base November 2009 = 100)

		All Items	All Items less Farm Produce.	All Items less Farm Produce. and Energy	Imported Food	Food	Food & Non Alcoholic Bev.	Alcoholic Beverage. Tobacco and Kola	Clothing and Footwear	Housing Water, Electricity. Gas and Other Fuel	Furnishings & Household Equipment Maintenance.	Health.	Transport	Communication	Recreation & Culture.	Education	Restaurant & Hotels	Miscellaneous Goods & Services	Month-on (%)	Year-on (%)	12-month average (%)
Weights**		1000	513.1	428.1	132.5	507.06	518	10.87	76.5	167.3	50.26	30	65.1	6.8	6.91	39.44	12.1	16.6			
Please note that the above weights are only expenditure weights which are still adjusted by population across 37 states. They should not be taken as the final weights in the computation of the CPI																					
2009	Jan	90.2	91.1	92.6		89.5	89.5	97.6	97.0	92.3	87.3	97.1	91.2	97.1	93.7	88.3	99.4	93.9	0.5	14.0	12.0
	Feb	90.8	91.7	92.6		90.2	90.2	98.5	97.0	92.6	87.4	98.6	90.2	97.1	92.8	88.1	100.4	94.1	0.7	14.6	12.6
	Mar	91.4	92.0	93.1		90.9	91.0	98.5	97.1	92.6	87.9	99.0	91.0	97.1	92.7	89.9	100.2	94.9	0.6	14.4	13.1
	Apr	91.9	92.5	94.1		91.6	91.7	99.1	97.5	92.9	89.6	101.1	94.4	97.1	93.4	89.3	101.3	95.4	0.6	13.3	13.5
	May	93.6	94.2	95.4		93.5	93.5	99.5	96.7	94.3	88.8	99.2	96.0	97.1	94.6	92.3	100.2	94.5	1.8	13.2	13.8
	June	95.3	95.3	96.6		95.6	95.6	99.7	97.1	96.3	89.6	100.1	94.0	97.1	95.0	92.6	101.1	97.8	1.8	11.2	13.7
	July	97.3	96.8	98.4		97.9	97.8	101.4	97.9	98.3	99.3	101.7	92.5	99.4	96.8	93.9	98.9	98.8	2.1	11.1	13.4
	Aug	98.4	97.3	97.7		98.9	98.9	100.2	99.1	98.4	100.2	101.8	93.1	101.5	98.1	99.4	101.2	100.0	1.1	11.0	13.3
	Sep	98.9	98.1	98.5		99.5	99.5	99.3	99.1	98.7	98.7	101.6	94.9	101.2	97.6	99.6	99.9	100.1	0.5	10.4	13.1
	Oct	99.4	98.9	99.1		99.9	99.9	99.7	99.6	99.5	99.1	102.3	96.0	100.4	97.5	97.7	99.0	99.7	0.5	11.6	12.8
	Nov	100.0	100.0	100.0	100.0	100.0	100.0	100.0	100.0	100.0	100.0	100.0	100.0	100.0	100.0	100.0	100.0	100.0	0.7	12.4	12.6
	Dec	102.2	101.5	101.9	101.5	102.4	102.7	101.9	101.5	100.2	101.7	101.8	101.8	100.0	101.9	101.5	102.6	101.7	2.2	13.9	12.5
2010	Jan	103.1	102.1	102.6	101.7	103.7	103.9	102.3	102.4	100.6	103.0	103.0	103.0	99.6	103.0	103.1	106.7	103.3	1.0	14.4	12.6
	Feb	105.0	104.5	105.0	103.2	104.8	105.4	102.6	103.4	102.3	104.7	104.9	104.7	100.3	99.4	106.0	106.3	105.9	1.9	15.6	12.7
	Mar	104.9	104.1	104.6	103.0	105.3	105.3	104.3	104.5	102.2	105.7	105.3	104.8	100.6	103.3	105.5	105.6	104.4	-0.1	14.8	12.8
	Apr	105.7	104.4	105.1	103.9	106.6	106.7	104.8	105.1	102.2	103.8	104.9	106.8	100.4	103.1	105.6	109.7	106.2	0.8	15.0	12.9
	May	105.7	105.2	106.5	104.9	105.7	106.2	103.8	105.9	102.1	102.6	104.8	106.3	100.2	103.3	108.6	110.1	107.2	0.04	12.9	12.9
	Jun	108.8	107.4	108.6	109.6	110.0	110.2	108.5	109.1	104.8	110.7	108.5	107.4	102.1	102.6	106.6	106.9	109.6	2.91	14.1	13.1
	Jul	109.9	107.7	108.8	109.3	111.6	112.0	109.6	110.3	105.1	109.0	110.3	107.5	102.6	103.0	105.7	105.0	110.7	1.08	13.0	13.3
	Aug	111.9	109.3	110.4	109.3	113.8	114.1	112.3	112.8	106.2	110.3	112.3	108.6	100.6	105.0	106.0	107.3	111.2	1.76	13.7	13.5
	Sep	112.4	110.7	111.7	113.6	114.0	113.5	109.0	112.4	109.9	112.1	112.0	112.2	101.8	108.4	108.4	107.1	111.7	0.46	13.6	13.8

Table 2 Composite Consumer Price Index (Base November 2009 = 100)

		All Items	All Items less Farm Produce.	All Items less Farm Produce. and Energy	Imported Food	Food	Food & Non Alcoholic Bev.	Alcoholic Beverage. Tobacco and Kola	Clothing and Footwear	Housing Water, Electricity. Gas and Other Fuel	Furnishings & Household Equipment Maintenance.	Health.	Transport	Communication	Recreation & Culture.	Education	Restaurant & Hotels	Miscellaneous Goods & Services	Month-on (%)	Year-on (%)	12-month average (%)
Weights**		1000	513.1	428.1	132.5	507.06	518	10.87	76.5	167.3	50.26	30	65.1	6.8	6.91	39.44	12.1	16.6			
Please note that the above weights are only expenditure weights which are still adjusted by population across 37 states. They should not be taken as the final weights in the computation of the CPI																					
	Oct	112.7	111.9	112.0	114.1	114.0	114.1	111.7	112.8	111.0	113.2	114.8	107.1	102.9	109.6	110.1	108.5	110.6	0.30	13.4	13.9
	Nov	112.8	111.7	111.3	115.1	114.4	114.3	112.2	112.0	112.6	113.1	111.1	111.7	102.0	107.8	107.7	108.2	112.8	0.04	12.8	13.9
	Dec	114.2	112.6	112.5	115.4	115.4	115.5	111.9	113.7	113.2	113.2	112.7	112.9	102.4	107.8	109.1	109.6	112.1	1.29	11.8	13.7
2011	Jan	115.6	114.5	113.0	96.0	114.3	118.7	110.6	114.4	113.9	113.5	111.3	109.2	103.6	108.3	110.2	110.5	113.2	1.2	12.1	13.5
	Feb	116.7	115.5	115.5	124.0	117.7	117.9	113.4	116.0	114.7	115.6	114.7	117.2	104.9	106.3	110.6	112.3	114.2	0.96	11.1	13.2
	Mar	118.3	117.5	117.5	119.4	118.1	118.2	112.7	116.5	116.0	115.9	117.5	115.5	105.1	107.4	111.0	112.2	112.8	1.37	12.8	13.0
	Apr	117.7	117.9	117.9	119.1	119.0	118.0	114.5	116.2	121.0	115.4	117.2	114.8	105.1	107.1	111.4	113.3	114.7	0.54	11.3	12.7
	May	118.7	118.9	119.0	120.6	118.5	118.5	115.1	118.2	121.2	116.6	116.6	115.7	105.7	107.4	111.9	113.8	115.6	0.91	12.4	12.6
	Jun	119.9	119.8	119.8	111.9	120.1	119.5	114.2	118.0	121.6	116.3	119.9	118.5	105.6	107.9	112.2	114.3	117.9	0.97	10.2	12.3
	Jul	120.3	120.1	119.9	112.6	120.4	120.2	112.4	117.7	122.5	117.6	118.3	120.7	106.2	111.1	112.6	115.0	119.8	0.32	9.4	12.0
	Aug	122.3	121.2	121.1	116.0	123.7	123.4	116.4	118.7	124.5	120.0	120.4	121.9	106.4	109.5	112.9	115.1	121.5	1.67	9.3	11.6
	Sep	124.0	123.5	122.7	117.6	124.8	124.2	116.2	119.9	126.1	119.2	122.3	122.3	106.2	109.8	113.8	115.7	121.6	1.41	10.3	11.4
	Oct	124.6	124.8	124.0	117.0	125.0	124.3	117.6	120.6	128.5	119.5	121.8	122.2	106.6	117.0	114.0	116.6	122.0	0.49	10.5	11.1
	Nov	124.7	124.6	123.5	124.2	125.4	125.1	118.9	121.9	128.1	120.2	122.7	123.3	107.1	115.7	114.2	116.9	125.5	0.04	10.5	11.0
	Dec	126.0	124.8	123.6	125.3	128.1	127.8	119.0	122.3	131.9	119.9	122.8	128.7	106.5	113.3	114.6	118.9	122.7	1.06	10.3	10.8
2012	Jan	130.2	129.1	129.2	121.6	129.3	130.8	123.2	121.1	131.8	120.6	122.7	127.8	108.7	114.5	115.0	120.0	125.9	3.35	12.6	10.9
	Feb	130.5	129.3	129.4	121.6	129.1	129.1	123.2	121.1	131.8	120.6	122.7	127.9	108.7	114.5	115.1	120.0	125.9	0.28	11.9	11.0
	Mar	132.6	135.1	134.5	129.9	132.1	131.9	120.6	133.7	139.7	130.2	129.7	134.4	113.4	116.7	125.6	121.4	131.6	1.59	12.1	10.9
	Apr	132.8	135.2	134.7	131.3	132.3	132.1	121.3	134.1	139.5	130.7	130.1	134.6	114.0	117.6	125.0	121.9	132.0	0.13	12.9	11.1
	May	133.8	136.7	136.3	132.5	133.9	133.7	122.0	134.7	139.7	131.1	130.8	135.1	114.4	118.4	125.5	122.6	132.6	0.75	12.7	11.1
	Jun	135.3	138.0	136.2	132.6	134.5	134.3	122.5	134.8	146.5	131.3	131.1	135.5	114.8	118.5	125.7	123.1	132.9	1.15	12.9	11.3

Table 2 Composite Consumer Price Index (Base November 2009 = 100)

		All Items	All Items less Farm Produce.	All Items less Farm Produce. and Energy	Imported Food	Food	Food & Non Alcoholic Bev.	Alcoholic Beverage. Tobacco and Kola	Clothing and Footwear	Housing Water, Electricity. Gas and Other Fuel	Furnishings & Household Equipment Maintenance.	Health.	Transport	Communication	Recreation & Culture.	Education	Restaurant & Hotels	Miscellaneous Goods & Services	Month-on (%)	Year-on (%)	12-month average (%)
Weights**		1000	513.1	428.1	132.5	507.06	518	10.87	76.5	167.3	50.26	30	65.1	6.8	6.91	39.44	12.1	16.6			
Please note that the above weights are only expenditure weights which are still adjusted by population across 37 states. They should not be taken as the final weights in the computation of the CPI																					
	Jul	135.7	138.1	136.5	132.9	135.0	134.7	122.8	134.9	146.7	131.3	131.3	135.8	114.9	118.9	125.9	123.4	133.1	0.24	12.8	11.6
	Aug	136.6	139.0	137.1	134.2*	135.9	135.7	123.3	135.6	147.8	132.0	132.0*	136.6	115.2	119.4	126.4	124.4	133.7	0.67	11.7	11.8
	Sep	138.0	139.7	137.7	134.2	137.5	137.2	123.8	136.5	150.1	132.9	132.4	137.3	115.6	120.6	126.7	125.0	134.4	1.01	11.3	11.9
	Oct	139.2	140.3	138.1	135.3	138.8	136.6	124.5	137.5	151.5	133.5	133.1	138.5	116.6	121.4	128.1	125.4	135.3	0.88	11.7	11.9
	Nov	140.0	140.9	138.7	136.2	139.8	139.6	125.3	138.2	152.3	134.1	133.5	138.9	116.2	121.8	128.8	125.7	135.6	0.60	12.3	12.1
	Dec	141.1	141.8	139.6	137.6	141.2	140.9	126.1	139.1	153.2	134.4	133.9	140.2	116.3	122.1	129.1	126.1	136.0	0.75	12.0	12.2
2013	Jan	141.9	143.8	140.3	138.7	142.3	142.0	127.1	140.1	153.8	135.4	134.3	140.6	116.4	122.2	129.3	126.4	136.3	0.62	9.0	11.9
	Feb	143.0	143.8	140.5	139.1	143.3	143.0	128.1	141.3	155.2	136.4	135.5	141.9	116.9	123.3	130.2	127.5	137.4	0.75	9.5	11.7
	Mar	144.0	144.8	142.9	139.3	144.6	144.3	128.7	141.8	155.9	136.9	136.4	142.4	117.3	123.7	131.2	127.7	138.8	0.71	8.6	11.4
	Apr	144.8	144.5	142.3	139.9	145.6	145.3	129.4	142.8	156.3	137.6	137.3	143.2	117.4	124.5	131.7	128.1	139.7	0.55	9.1	11.1
	May	145.8	145.2	141.9	140.1	146.4	146.1	130.1	144.0	157.2	139.3	138.6	144.5	117.9	125.8	133.2	129.1	140.6	0.67	9.0	10.8
	Jun	146.6	145.5	142.2	141.4	147.5	147.1	130.7	144.6	158.0	139.9	139.4	145.0	118.1	126.3	133.3	129.7	141.1	0.59	8.4	10.4
	Jul	147.4	147.2	145.1	142.4	148.4	148.1	131.3	145.2	158.8	140.4	140.0	145.5	118.5	126.6	133.5	130.3	141.5	0.54	8.7	10.0
	Aug	147.8	149.1	146.3	143.2	149.2	148.8	131.6	145.3	158.5	140.5	140.0	145.6	118.6	126.7	133.8	130.5	141.6	0.25	8.2	9.8
	Sep	148.9	150.0	147.8	144.3	150.4	150.1	132.4	146.3	159.4	141.3	140.9	146.7	119.1	127.5	134.9	131.5	142.6	0.75	8.0	9.5
	Oct	150.0	150.9	148.6	145.5	151.6	151.3	133.4	147.5	160.3	142.3	142.0	147.8	120.0	128.5	136.0	132.6	143.8	0.75	7.8	9.2
	Nov	151.1	151.8	149.5	146.3	152.9	152.5	134.2	148.7	161.3	143.2	142.7	148.6	120.4	129.3	137.0	133.6	144.9	0.72	7.9	8.8
	Dec	152.3	153.0	150.8	147.4	154.3	153.9	134.7	149.8	162.2	144.1	143.5	149.6	120.9	130.1	137.9	134.4	145.9	0.78	8.0	8.5
2014	Jan	153.3	153.3	150.7	148.4	155.5	155.2	135.5	150.7	162.7	145.0	144.3	150.4	121.3	131.0	138.3	134.9	146.5	0.64	8.0	8.4
	Feb	154.0	154.1	151.8	149.1	156.5	156.1	136.0	151.4	163.3	145.5	145.0	151.0	121.6	132.0	138.7	135.3	146.9	0.50	7.7	8.3
	Mar	155.2	154.7	152.5	150.3	158.0	157.6	136.7	151.9	164.2	146.5	145.9	152.0	122.1	132.8	139.4	136.1	147.7	0.78	7.8	8.2

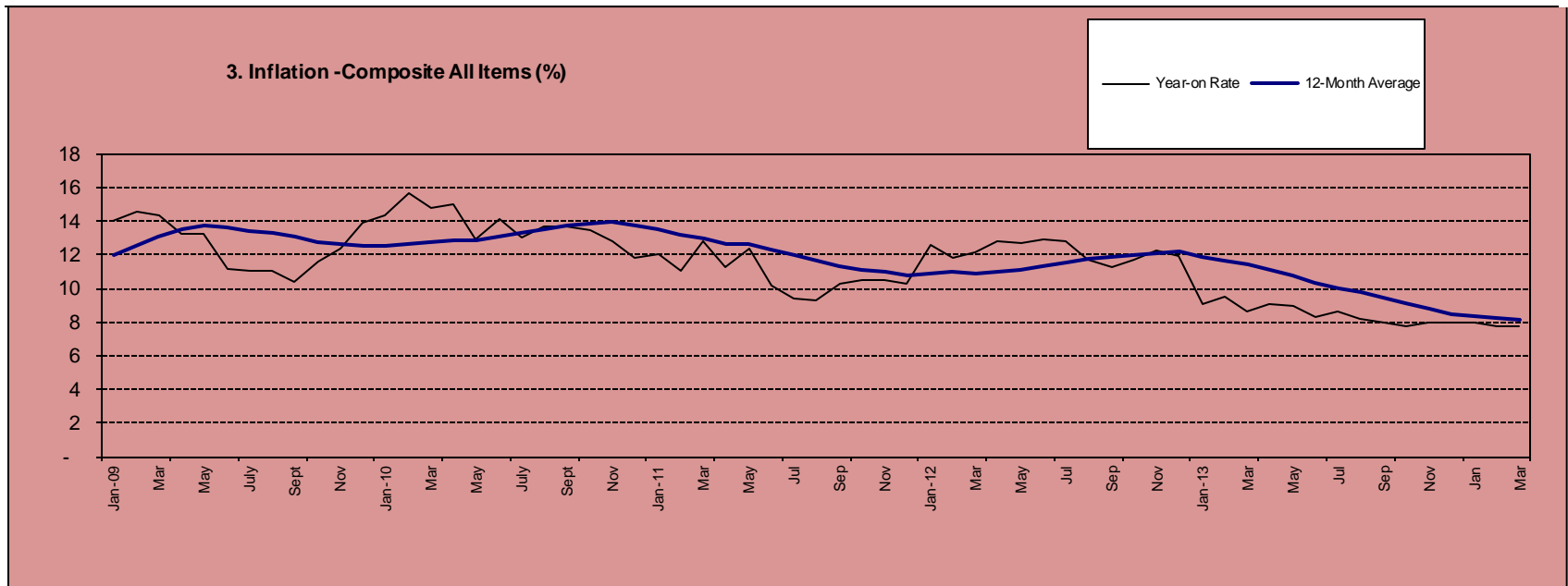


Table 3 Urban Consumer Price Index (Base November 2009 = 100)

		All Items	All Items less Farm Produce.	All Items less Farm Produce. and Energy	Imported Food	Food	Food & Non Alcoholic Bev.	Alcoholic Beverage. Tobacco and Kola	Clothing and Footwear	Housing Water, Electricity. Gas and Other Fuel	Furnishings & Household Equipment Maintenance.	Health.	Transport	Communication	Recreation & Culture.	Education	Restaurant & Hotels	Miscellaneous Goods & Services	Month-on (%)	Year-on (%)	12-month average (%)
Weights		1000	575.22	440.93	155.13	476.82	490.59	11.19	65.5	191.51	49.74	27.4	74.54	10.14	7.2	40.05	14.49	17.65			
Please note that the above weights are only expenditure weights which are still adjusted by population across 37 states. They should not be taken as the final weights in the computation of the CPI																					
2009	Jan	92.8	96.6	97.8		90.5	90.5	97.6	97.8	96.4	96.3	96.3	94.0	99.3	97.8	92.3	102.0	96.0	0.0	10.4	11.8
	Feb	93.6	96.3	97.6		92.0	92.0	98.6	98.2	95.5	96.2	98.1	93.0	99.3	97.8	90.9	103.2	95.2	0.8	9.8	11.6
	Mar	93.9	96.5	98.0		92.4	92.4	98.8	97.9	95.5	96.5	98.3	94.1	99.3	96.7	93.0	104.1	95.1	0.4	9.9	11.5
	Apr	94.3	97.4	98.8		92.5	92.6	99.9	98.6	96.4	98.0	99.6	95.7	99.3	97.8	89.7	104.4	95.6	0.5	8.6	11.3
	May	95.7	98.2	98.7		94.1	94.1	100.1	96.9	98.1	96.2	97.9	97.1	99.3	98.9	96.3	104.2	98.2	1.4	9.5	11.2
	June	97.2	98.8	99.7		96.3	96.3	100.6	97.0	98.5	97.4	99.3	96.7	99.3	99.9	96.7	106.2	98.1	1.6	9.2	11.0
	July	98.9	99.5	100.3		98.4	98.4	102.1	99.9	100.2	98.8	100.9	95.7	100.8	100.1	97.6	100.1	98.5	1.7	9.3	10.7
	Aug	99.6	99.7	99.4		99.3	99.3	100.7	99.9	100.6	99.7	100.3	95.1	102.1	101.2	97.4	105.2	99.9	0.7	8.4	10.4
	Sep	99.8	99.5	99.2		99.8	99.8	99.8	99.7	100.3	101.1	98.8	96.0	101.5	100.5	99.5	99.7	100.8	0.2	8.1	10.0
	Oct	99.8	99.9	99.3		99.6	99.6	99.8	100.3	100.8	100.9	99.9	96.8	100.9	100.1	98.9	98.0	100.7	0.0	8.3	9.5
	Nov	100.0	100.0	100.0	100.0	100.0	100.0	100.0	100.0	100.0	100.0	100.0	100.0	100.0	100.0	100.0	100.0	100.0	0.2	8.8	9.3
	Dec	101.4	101.3	101.8	100.5	101.6	101.7	99.9	100.9	101.4	100.8	101.6	102.0	99.2	104.2	100.7	103.2	101.6	1.4	9.3	9.1
2010	Jan	102.6	102.5	102.7	101.1	102.8	102.8	100.7	103.1	102.6	101.9	102.4	103.5	99.7	105.8	102.5	108.3	102.8	1.2	10.5	9.1
	Feb	104.4	105.4	105.4	103.1	102.9	103.6	101.6	103.6	104.4	103.6	105.4	103.9	100.1	99.4	108.0	106.7	106.3	1.8	11.6	9.3
	Mar	106.0	105.7	105.9	103.5	106.1	105.9	103.8	105.9	104.8	106.1	106.8	108.1	100.9	107.1	106.8	107.5	106.1	1.5	12.9	9.6
	Apr	105.9	105.4	105.6	103.4	106.3	106.1	103.9	106.0	103.9	105.5	106.9	106.7	100.8	108.3	106.6	111.5	107.0	-0.1	12.2	9.9
	May	103.8	103.7	104.9	104.5	103.8	104.7	102.0	104.7	99.2	103.0	104.1	105.9	101.2	105.0	105.7	109.3	104.8	-1.9	8.5	9.8
	Jun	107.7	107.0	108.0	110.0	108.5	108.6	106.8	108.7	105.2	108.7	107.9	106.2	103.4	104.0	106.8	108.6	109.3	3.7	10.8	9.9
	Jul	109.1	107.9	108.4	109.1	110.4	110.6	109.2	110.4	103.9	108.4	111.6	109.3	104.0	102.8	106.7	106.4	110.6	1.3	10.3	10.0
	Aug	110.5	109.0	109.9	111.0	112.8	112.9	110.0	112.1	103.0	110.7	113.0	110.0	100.9	106.4	108.1	111.6	111.7	1.3	10.9	10.2
	Sep	110.6	109.4	110.5	113.0	112.6	112.4	106.6	112.4	106.0	110.5	110.0	112.2	101.4	110.1	107.6	107.3	109.2	0.1	10.9	10.4
	Oct	111.2	110.0	110.1	114.3	113.5	113.5	109.6	111.6	110.7	109.4	110.8	105.8	101.4	109.0	108.4	106.0	110.8	0.5	11.5	10.7
	Nov	111.7	111.3	111.1	113.4	112.8	112.8	110.0	112.2	111.0	111.1	111.8	110.4	101.1	109.7	107.9	107.8	113.1	0.5	11.7	10.9
	Dec	112.2	111.2	111.0	113.5	113.4	113.4	109.7	113.8	111.8	111.5	112.9	111.7	100.8	109.2	109.3	111.3	112.7	0.4	10.7	11.0
2011	Jan	110.7	108.5	106.0	67.2	111.7	116.5	107.8	114.9	110.8	112.4	111.6	108.3	105.8	108.1	111.2	113.2	111.6	-1.4	7.9	10.8

Table 3 Urban Consumer Price Index (Base November 2009 = 100)

		All Items	All Items less Farm Produce.	All Items less Farm Produce. and Energy	Imported Food	Food	Food & Non Alcoholic Bev.	Alcoholic Beverage. Tobacco and Kola	Clothing and Footwear	Housing Water, Electricity. Gas and Other Fuel	Furnishings & Household Equipment Maintenance.	Health.	Transport	Communication	Recreation & Culture.	Education	Restaurant & Hotels	Miscellaneous Goods & Services	Month-on (%)	Year-on (%)	12-month average (%)
Weights		1000	575.22	440.93	155.13	476.82	490.59	11.19	65.5	191.51	49.74	27.4	74.54	10.14	7.2	40.05	14.49	17.65			
Please note that the above weights are only expenditure weights which are still adjusted by population across 37 states. They should not be taken as the final weights in the computation of the CPI																					
	Feb	114.2	114.1	114.4	117.6	115.5	115.2	110.2	115.1	115.5	114.4	118.6	111.6	101.9	103.7	111.7	114.9	114.6	3.2	9.4	10.6
	Mar	115.0	114.9	114.2	118.0	116.0	116.3	109.8	115.7	118.2	115.1	120.5	111.9	101.8	105.1	111.6	115.9	113.8	0.7	8.5	10.3
	Apr	115.5	116.3	116.1	114.9	116.4	115.5	112.3	116.3	116.1	114.8	117.8	112.2	102.5	106.1	111.6	115.1	115.5	0.5	9.1	10.0
	May	115.8	116.8	116.7	116.0	116.7	116.2	112.9	117.2	116.0	116.4	120.1	116.2	102.8	105.6	111.7	115.9	114.7	0.2	11.5	10.2
	Jun	116.6	116.6	116.3	112.4	118.0	117.2	112.1	117.2	116.3	115.4	121.1	116.5	102.0	106.5	111.7	116.8	114.7	0.7	8.3	10.0
	Jul	116.3	116.8	115.6	111.8	118.0	117.6	112.2	117.4	118.3	116.7	118.8	119.0	103.4	104.9	112.5	117.3	115.8	-0.3	6.6	9.7
	Aug	118.3	118.7	117.8	113.4	119.9	119.1	113.8	117.9	119.9	119.7	121.1	122.1	103.4	107.9	112.6	116.1	116.9	1.7	7.1	9.4
	Sep	120.0	121.3	119.6	115.5	120.7	119.8	114.1	118.4	124.8	120.2	123.6	121.3	103.7	108.2	113.2	117.7	117.2	1.4	8.4	9.2
	Oct	119.9	121.2	119.1	115.5	120.9	120.0	114.6	119.1	125.6	120.3	121.7	121.3	104.3	111.1	113.2	118.8	116.7	-0.1	7.8	8.9
	Nov	120.0	121.1	118.9	119.0	120.8	119.7	115.5	120.9	125.1	119.7	123.3	122.8	105.0	108.6	113.7	119.0	120.5	0.1	7.4	8.5
	Dec	122.3	122.0	119.6	121.1	124.5	123.8	115.2	120.2	128.0	119.2	122.1	128.2	104.6	107.9	114.6	121.1	117.4	2.0	9.0	8.4
2012	Jan	128.9	128.2	127.4	113.4	125.5	127.1	119.3	119.7	135.4	120.6	123.3	127.4	105.9	108.9	114.9	123.4	119.9	5.3	16.4	9.1
	Feb	129.2	128.4	127.5	113.5	126.3	126.2	119.3	119.7	135.5	120.6	123.3	127.5	105.9	108.9	114.9	123.4	119.9	0.3	13.1	9.4
	Mar	130.7	132.6	132.1	129.5	129.1	128.9	113.2	135.2	136.9	127.4	129.0	137.6	110.6	115.1	124.2	122.9	131.4	1.2	13.7	9.9
	Apr	131.1	133.0	132.6	130.7	129.4	129.2	114.6	136.3	136.9	128.1	129.4	137.6	111.1	116.4	124.4	123.1	132.3	0.3	13.4	10.3
	May	132.1	134.0	133.6	132.1	131.1	130.9	115.5	136.8	137.2	128.4	130.1	138.2	111.7	117.8	125.3	123.5	133.0	0.8	14.1	10.5
	Jun	134.1	135.8	134.0	132.1	131.4	131.3	116.1	137.0	146.5	128.3	130.4	138.3	112.1	117.6	125.5	123.7	133.4	1.5	15.0	11.1
	Jul	134.5	135.5	133.6	132.4	131.7	131.6	116.4	137.0	146.9	128.5	130.8	138.7	112.2	118.4	125.9	124.2	133.6	0.2	15.6	11.8
	Aug	135.4	136.7	134.3	133.8*	132.5	132.4*	117.0	137.9	148.3	129.5	131.5	139.6	112.6	119.3	126.1	126.0	134.8	0.7	14.5*	12.4
	Sep	137.0	137.7	135.4	133.9	134.2	134.0	117.3	138.9	151.1	130.3	132.3	140.4	113.3	121.0	126.6	126.2	136.1	1.2	14.2	12.9
	Oct	138.2	138.3	135.6	134.5	135.3	135.1	117.6	139.7	152.9	131.2	133.0	141.5	113.6	121.9	127.9	126.8	136.9	0.9	15.3	13.5
	Nov	139.0	138.9	136.1	134.5	136.2	136.0	118.1	140.1	154.2	131.8	133.3	142.1	113.7	122.8	128.6	127.2	137.0	0.6	15.8	14.2
	Dec	140.0	139.8	136.9	136.7	137.6	137.3	118.8	141.2	155.1	132.1	133.6	143.1	113.8	122.8	129.0	127.3	137.2	0.8	14.5	14.6

Table 3 Urban Consumer Price Index (Base November 2009 = 100)

		All Items	All Items less Farm Produce.	All Items less Farm Produce. and Energy	Imported Food	Food	Food & Non Alcoholic Bev.	Alcoholic Beverage. Tobacco and Kola	Clothing and Footwear	Housing Water, Electricity. Gas and Other Fuel	Furnishings & Household Equipment Maintenance.	Health.	Transport	Communication	Recreation & Culture.	Education	Restaurant & Hotels	Miscellaneous Goods & Services	Month-on (%)	Year-on (%)	12-month average (%)
Weights		1000	575.22	440.93	155.13	476.82	490.59	11.19	65.5	191.51	49.74	27.4	74.54	10.14	7.2	40.05	14.49	17.65			
Please note that the above weights are only expenditure weights which are still adjusted by population across 37 states. They should not be taken as the final weights in the computation of the CPI																					
2013	Jan	140.8	142.3	137.9	137.8	138.6	138.4	120.0	141.8	155.4	132.4	134.0	143.6	113.9	122.9	129.4	127.5	137.6	0.5	9.2	14.0
	Feb	142.0	142.3	137.9	137.9	139.9	139.6	121.0	143.0	156.7	133.3	135.3	144.9	114.3	124.1	130.5	128.6	138.9	0.9	9.8	13.7
	Mar	142.8	142.0	139.3	138.5	140.7	140.5	121.7	144.0	157.5	134.2	136.3	145.9	114.9	124.8	131.5	129.1	140.0	0.6	9.3	13.3
	Apr	143.7	142.6	140.1	138.6	142.0	141.7	122.5	144.7	158.3	134.6	136.7	146.3	115.0	125.4	131.6	129.3	140.3	0.6	9.7	13.0
	May	144.5	142.7	138.7	139.0	142.7	142.5	122.9	145.8	158.8	135.6	137.8	147.3	115.5	126.3	132.8	130.4	141.6	0.6	9.4	12.6
	Jun	145.5	143.1	139.1	140.4	143.9	143.6	123.6	146.5	159.9	135.9	138.6	148.1	115.7	126.6	133.0	131.3	142.1	0.7	8.4	12.0
	Jul	146.3	145.4	142.9	141.5	145.0	144.7	123.9	147.2	160.8	136.5	139.2	148.9	116.1	127.2	133.2	131.7	142.4	0.6	8.8	11.4
	Aug	146.8	147.7	144.1	142.6	145.8	145.5	124.1	147.2	160.8	136.7	139.3	149.1	116.2	127.2	133.3	132.1	142.7	0.3	8.4	10.9
	Sep	147.9	147.7	145.3	143.7	147.1	146.8	125.3	148.5	161.7	137.6	140.2	150.2	116.8	128.4	134.5	133.2	143.7	0.8	8.0	10.4
	Oct	149.1	148.6	146.0	145.0	148.3	148.0	126.2	149.8	162.6	138.5	141.4	151.4	117.7	129.5	135.6	134.4	145.0	0.8	7.9	9.8
	Nov	150.2	149.4	146.7	145.8	149.6	149.3	127.0	151.0	163.8	139.0	142.0	152.4	118.1	130.3	136.7	135.4	145.9	0.8	8.1	9.2
	Dec	151.4	150.4	147.7	146.7	151.0	150.6	127.6	152.2	164.9	139.8	142.7	153.4	118.7	131.1	137.7	135.9	146.8	0.8	8.1	8.8
2014	Jan	152.2	150.7	147.6	147.7	152.3	151.9	128.4	153.0	165.2	140.7	143.4	153.6	118.7	131.7	137.8	136.1	147.1	0.6	8.2	8.7
	Feb	153.0	151.6	148.9	148.6	153.2	152.8	128.9	153.6	165.8	141.1	144.4	154.4	119.2	132.4	138.4	136.5	147.5	0.5	7.8	8.5
	Mar	154.2	152.1	149.7	149.8	154.7	154.4	129.6	154.1	166.7	142.1	145.2	155.3	119.9	133.6	139.2	137.4	148.3	0.8	7.9	8.4

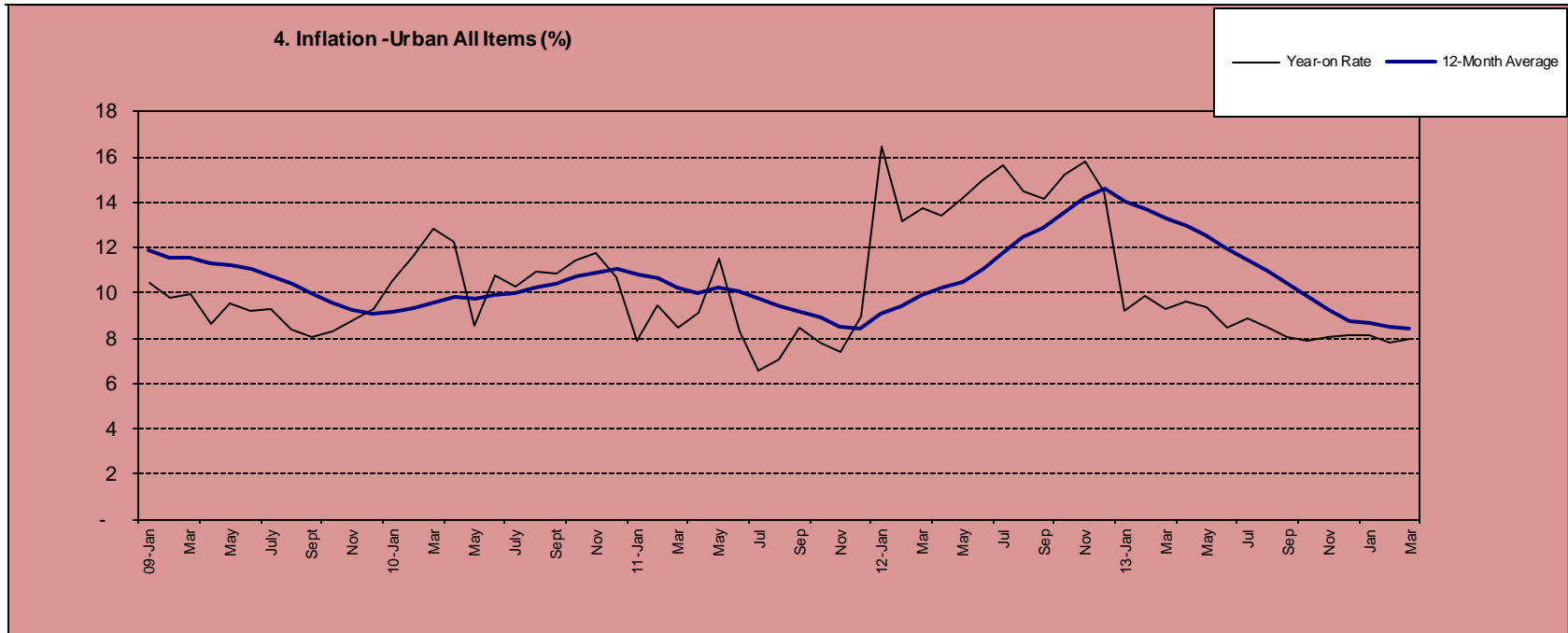


Table 4 Rural Consumer Price Index (Base November 2009 = 100)

		All Items	All Items less Farm Produce.	All Items less Farm Produce. and Energy	Imported Food	Food	Food & Non Alcoholic Bev.	Alcoholic Beverage. Tobacco and Kola	Clothing and Footwear	Housing Water, Electricity. Gas and Other Fuel	Furnishings & Household Equipment Maintenance.	Health.	Transport	Communication	Recreation & Culture.	Education	Restaurant & Hotels	Miscellaneous Goods & Services	Month-on (%)	Year-on (%)	12-month average (%)
Weights		1000.0	503.1	417.4	113.7	532.3	540.9	10.6	85.7	147.2	50.7	32.2	57.2	4.0	6.7	38.9	10.1	15.8			
2009	Jan	88.9	88.5	90.0		89.1	89.1	97.5	96.2	87.1	81.7	97.9	86.6	95.2	91.2	84.5	97.8	92.1	0.8	15.9	12.1
	Feb	89.5	89.5	90.2		89.6	89.6	98.3	95.7	89.0	81.9	99.0	85.6	95.2	89.7	85.4	98.8	93.1	0.7	17.2	13.1
	Mar	90.2	89.8	90.8		90.5	90.5	98.0	96.1	88.8	82.5	99.6	85.7	95.2	90.2	87.0	97.9	94.7	0.7	16.7	13.9
	Apr	90.7	90.2	91.7		91.3	91.3	98.0	96.2	88.5	84.4	102.4	92.0	95.2	90.8	88.9	99.5	95.3	0.6	15.7	14.6
	May	92.6	92.3	93.8		93.3	93.3	98.8	96.5	89.7	84.2	100.2	94.0	95.2	91.9	88.4	98.0	91.3	2.1	15.1	15.1
	June	94.4	93.7	95.1		95.4	95.3	98.6	97.1	93.4	84.8	100.8	89.6	95.2	92.1	88.6	98.2	97.5	1.9	12.2	15.1
	July	96.5	95.5	97.5		97.7	97.7	100.4	95.7	95.9	99.6	102.5	87.2	98.3	94.7	90.4	98.3	99.0	2.3	12.0	14.8
	Aug	97.8	96.1	96.9		98.8	98.7	99.6	98.3	95.6	100.6	103.0	89.9	100.9	96.2	101.3	98.9	100.1	1.3	12.4	14.8
	Sep	98.5	97.4	98.2		99.4	99.3	98.6	98.4	96.8	97.2	103.9	93.2	100.9	95.8	99.8	100.1	99.6	0.7	11.5	14.7
	Oct	99.2	98.4	99.0		100.0	100.0	99.5	98.9	97.9	98.0	104.4	94.6	100.0	96.0	96.6	99.6	98.9	0.7	13.2	14.5
	Nov	100.0	100.0	100.0	100.0	100.0	100.0	100.0	100.0	100.0	100.0	100.0	100.0	100.0	100.0	100.0	100.0	100.0	0.8	14.2	14.3
	Dec	102.8	101.7	102.1	102.3	103.1	103.5	103.5	102.0	99.2	102.4	102.0	101.6	100.6	99.9	102.1	102.0	101.9	2.8	16.6	14.3
2010	Jan	103.6	101.9	102.4	102.2	104.4	104.9	103.6	101.8	98.9	103.9	103.5	102.7	99.5	100.7	103.6	105.5	103.7	0.8	16.5	14.4
	Feb	105.6	103.8	104.7	103.3	106.4	106.9	103.5	103.3	100.6	105.5	104.5	105.3	100.5	99.5	104.3	106.0	105.6	1.9	17.9	14.5
	Mar	104.0	102.8	103.5	102.6	104.6	104.9	104.7	103.3	100.0	105.3	104.0	102.1	100.4	100.1	104.4	104.0	103.0	-1.5	15.3	14.4
	Apr	105.6	103.6	104.7	106.6	106.8	107.2	105.6	104.3	100.8	102.3	103.3	106.8	100.0	98.7	104.7	108.2	105.5	1.5	16.4	14.5
	May	107.2	106.5	107.9	105.4	107.2	107.5	105.3	106.8	104.6	102.3	105.4	106.6	99.4	101.8	111.0	110.7	109.1	1.6	15.8	14.5
	Jun	109.6	107.8	109.2	109.2	111.2	111.5	109.9	109.4	104.4	112.4	108.9	108.4	101.0	101.5	106.4	105.4	109.9	2.2	16.1	14.9
	Jul	110.7	107.6	109.2	109.5	112.6	113.2	109.9	110.2	106.2	109.6	109.2	105.9	101.4	103.1	104.9	103.9	110.7	0.9	14.6	15.1
	Aug	113.0	109.6	110.8	111.4	114.7	115.2	114.2	113.4	108.9	109.9	111.8	107.4	100.4	103.9	104.3	103.7	110.7	2.1	15.6	15.3
	Sep	113.8	111.7	112.7	114.1	115.1	114.5	110.9	112.4	113.1	113.5	113.6	112.2	102.2	106.9	109.0	107.0	113.8	0.7	15.6	15.7
	Oct	114.0	113.5	113.6	113.9	114.4	114.5	113.5	113.9	111.2	116.4	118.1	108.1	104.1	110.0	111.5	110.6	110.5	0.1	15.0	15.8

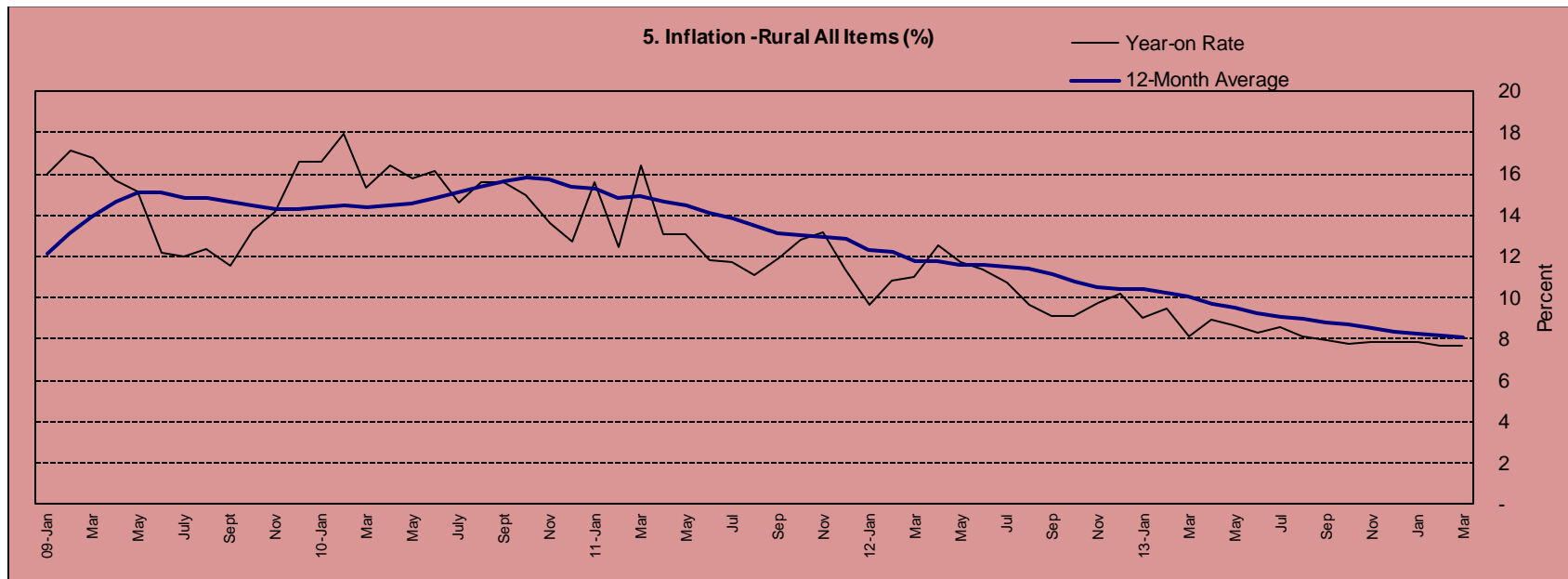
Table 4 Rural Consumer Price Index (Base November 2009 = 100)

		All Items	All Items less Farm Produce.	All Items less Farm Produce. and Energy	Imported Food	Food	Food & Non Alcoholic Bev.	Alcoholic Beverage. Tobacco and Kola	Clothing and Footwear	Housing Water, Electricity, Gas and Other Fuel	Furnishings & Household Equipment Maintenance.	Health.	Transport	Communication	Recreation & Culture.	Education	Restaurant & Hotels	Miscellaneous Goods & Services	Month-on (%)	Year-on (%)	12-month average (%)
Weights		1000.0	503.1	417.4	113.7	532.3	540.9	10.6	85.7	147.2	50.7	32.2	57.2	4.0	6.7	38.9	10.1	15.8			
	Nov	113.6	112.1	111.5	116.5	115.7	115.4	114.0	111.8	113.9	114.8	110.5	112.8	102.7	106.2	107.5	108.5	112.6	-0.3	13.6	15.7
	Dec	115.9	113.8	113.7	117.0	117.1	117.2	113.7	113.6	114.3	114.7	112.6	114.0	103.6	106.6	109.0	108.2	111.5	2.0	12.7	15.4
2011	Jan	119.7	119.5	118.9	120.1	116.5	120.5	113.0	114.0	116.4	114.5	111.1	110.0	101.8	108.5	109.4	108.2	114.5	3.3	15.6	15.3
	Feb	118.8	116.7	116.4	129.4	119.4	120.2	116.1	116.8	114.1	116.6	111.4	121.9	107.4	108.4	109.7	110.1	113.8	-0.8	12.5	14.9
	Mar	121.1	119.6	120.2	120.6	119.9	119.8	115.2	117.3	114.2	116.6	115.0	118.4	107.8	109.2	110.6	109.1	111.9	1.9	16.4	15.0
	Apr	119.4	119.2	119.4	122.6	121.1	120.10	116.4	116.1	125.1	116.0	116.7	116.9	107.2	107.8	111.2	111.9	114.1	-1.3	13.1	14.7
	May	121.2	120.6	120.8	124.4	120.1	120.40	116.9	119.0	125.5	116.7	113.8	115.4	108.1	108.8	112.1	112.0	116.4	1.5	13.0	14.5
	Jun	122.6	122.4	122.8	111.5	121.9	121.49	116.0	118.6	126.0	117.1	118.8	120.1	108.7	109.2	112.6	112.1	120.6	1.1	11.8	14.1
	Jul	123.6	122.8	123.4	113.3	122.4	122.45	112.5	117.9	126.0	118.2	117.9	122.1	108.5	116.2	112.8	113.1	123.2	0.8	11.7	13.8
	Aug	125.6	123.3	123.8	118.1	126.9	127.0	118.6	119.4	128.4	120.1	119.9	121.8	108.8	110.9	113.2	114.2	125.4	1.6	11.1	13.5
	Sep	127.4	125.3	125.3	119.4	128.2	128.0	118.0	121.2	127.2	118.4	121.3	123.1	108.3	111.0	114.2	114.0	125.2	1.4	11.9	13.2
	Oct	128.6	127.8	128.0	118.1	128.4	127.9	120.1	121.8	131.0	118.8	121.8	123.0	108.6	122.1	114.6	114.8	126.4	0.9	12.8	13.0
	Nov	128.6	127.4	127.3	128.6	129.1	129.6	121.8	122.6	130.5	120.7	122.2	123.7	108.9	121.6	114.6	115.1	129.7	0.0	13.1	13.0
	Dec	129.0	127.1	127.0	128.8	131.1	131.1	122.2	124.1	135.1	120.6	123.4	129.2	108.1	117.9	114.6	117.0	127.1	0.3	11.3	12.8
2012	Jan	131.3	129.9	130.7	128.4	132.4	134.0	126.4	122.3	128.7	120.6	122.2	128.2	111.0	119.2	115.2	117.2	130.8	1.8	9.7	12.3
	Feb	131.6	130.0	130.9	128.4	131.8	131.7	126.4	122.3	128.8	120.6	122.2	128.2	111.0	119.2	115.2	117.2	130.8	0.3	10.9	12.2
	Mar	134.4	137.1	136.5	130.3	134.9	134.7	127.4	132.3	142.7	133.2	130.2	130.0	114.6	117.9	126.7	120.2	131.7	2.1	11.0	11.8
	Apr	134.4	137.0	136.5	131.8	135.0	134.8	127.7	132.0	142.3	133.6	130.7	130.3	115.1	118.3	125.5	121.0	131.8	0.01	12.5	11.7
	May	135.4	138.9	138.5	132.9	136.5	136.3	128.1	132.6	142.6	133.9	131.3	130.7	115.3	118.8	125.7	121.9	132.2	0.74	11.7	11.6
	Jun	136.5	139.8	138.1	133.0	137.4	137.2	128.5	132.6	146.3	134.3	131.6	131.3	115.7	119.0	125.9	122.6	132.5	0.83	11.4	11.6
	Jul	136.9	140.4	138.9	133.3	138.0	137.7	129.0	132.9	146.4	134.2	131.6	131.6	115.8	119.1	125.8	122.9	132.7	0.25	10.7	11.5
	Aug	137.8	140.9*	139.4	134.5	139.1	138.9	129.4	133.5	147.2	134.7	132.2*	132.1	116.0	119.3	126.6	123.0	132.8	0.65*	9.7	11.4
	Sep	139.0	141.3	139.6	134.4	140.6	140.3	130.0	134.2	148.9	135.7	132.4	132.9	116.2	120.0	126.8	124.0	132.9	0.89	9.1	11.1
	Oct	140.2	141.9	140.1	136.0	142.0	141.8	131.0	135.5	149.9	136.0	133.0	134.0	116.6	120.7	128.2	124.3	134.0	0.88	9.1	10.8

Table 4 Rural Consumer Price Index (Base November 2009 = 100)

		All Items	All Items less Farm Produce.	All Items less Farm Produce. and Energy	Imported Food	Food	Food & Non Alcoholic Bev.	Alcoholic Beverage, Tobacco and Kola	Clothing and Footwear	Housing Water, Electricity, Gas and Other Fuel	Furnishings & Household Equipment Maintenance.	Health.	Transport	Communication	Recreation & Culture.	Education	Restaurant & Hotels	Miscellaneous Goods & Services	Month-on (%)	Year-on (%)	12-month average (%)
Weights		1000.0	503.1	417.4	113.7	532.3	540.9	10.6	85.7	147.2	50.7	32.2	57.2	4.0	6.7	38.9	10.1	15.8			
	Nov	141.1	142.5	141.0	137.7	143.2	142.9	132.0	136.3	150.3	136.7	133.7	134.2	116.8	120.8	129.0	124.5	134.5	0.63	9.8	10.5
	Dec	142.1	143.5	141.9	138.3	144.5	144.2	132.8	137.1	151.1	136.9	134.1	135.7	117.0	121.2	129.1	125.2	135.0	0.73	10.2	10.5
2013	Jan	143.2	144.9	142.4	139.5	145.7	145.4	133.6	138.4	152.0	138.5	134.5	136.1	117.1	121.4	129.2	125.6	135.2	0.73	9.1	10.4
	Feb	144.1	144.9	142.7	140.1	146.4	146.1	134.7	139.7	153.4	139.7	135.6	137.3	117.6	122.4	129.9	126.6	136.2	0.65	9.5	10.3
	Mar	145.3	147.1	145.9	140.0	148.2	147.9	135.4	139.8	153.9	139.8	136.5	137.5	117.9	122.6	131.0	126.5	137.7	0.82	8.1	10.0
	Apr	146.4	146.5	144.4	140.5	149.2	148.9	136.2	141.2	154.7	142.2	137.9	139.0	118.0	124.5	132.8	127.3	139.1	0.76	8.9	9.7
	May	147.1	147.2	144.5	140.9	149.8	149.5	137.1	142.3	155.3	143.0	139.3	139.9	118.4	125.2	133.5	128.1	139.9	0.50	8.6	9.5
	Jun	147.9	147.6	144.8	142.2	150.8	150.5	137.5	142.7	155.9	143.9	140.0	140.2	118.7	125.8	133.6	128.4	140.3	0.54	8.3	9.2
	Jul	148.6	148.8	146.9	143.2	151.7	151.4	138.4	143.4	156.6	144.2	140.6	140.6	119.0	126.0	133.8	129.2	140.7	0.50	8.6	9.1
	Aug	148.9	150.2	148.2	143.7	152.3	152.0	138.8	143.5	156.2	144.3	140.7	140.6	119.1	126.1	134.1	129.2	140.8	0.20	8.1	8.9
	Sep	150.0	151.9	149.9	144.7	153.6	153.3	139.5	144.3	157.1	145.0	141.4	141.5	119.6	126.5	135.2	130.2	141.6	0.74	8.0	8.8
	Oct	151.1	152.8	150.8	145.9	154.8	154.5	140.7	145.4	157.9	146.2	142.5	142.5	120.5	127.4	136.4	131.2	142.8	0.73	7.8	8.7
	Nov	152.2	153.8	151.9	146.8	156.0	155.7	141.3	146.4	158.8	147.3	143.2	143.2	120.9	128.2	137.2	132.1	144.1	0.68	7.8	8.6
	Dec	153.3	155.2	153.4	148.0	157.4	157.0	142.0	147.5	159.5	148.5	144.1	144.1	121.3	129.0	138.0	133.3	145.2	0.76	7.9	8.4
2014	Jan	154.4	155.5	153.3	149.0	158.6	158.3	142.7	148.4	160.2	149.2	144.9	145.3	122.1	130.2	138.7	134.0	146.1	0.68	7.8	8.3
	Feb	155.1	156.1	154.2	149.6	159.5	159.2	143.2	149.2	160.7	149.9	145.4	145.9	122.3	131.3	138.9	134.4	146.4	0.49	7.7	8.1
	Mar	156.4	156.8	154.9	150.7	161.2	160.8	144.0	149.9	161.6	150.8	146.4	146.9	122.8	131.8	139.5	135.2	147.2	0.81	7.6	8.1

NB: *indicates class indices adjusted due to rounding errors



**Table 5 Combined Urban And Rural State Consumer Price Index
(Base Period: November 2009 = 100)**

State	Mar-13		Feb 14		Mar 14	
	Food	All Items	Food	All Items	Food	All Items
Abia	189.5	167.2	162.4	156.2	162.0	156.3
Abuja	118.1	133.2	150.9	153.5	152.1	155.7
Adamawa	136.6	138.2	153.0	149.1	154.8	150.3
Akwabom	132.1	132.2	155.0	152.6	158.8	153.9
Anambra	195.7	163.4	148.4	148.1	150.0	149.1
Bauchi	163.4	136.4	148.1	156.4	149.1	155.5
Bayelsa	174.4	169.3	158.6	161.1	162.4	163.3
Benue	115.4	131.1	168.8	159.0	169.8	160.0
Borno	134.2	145.2	157.2	150.3	159.2	152.1
Cross River	142.0	158.2	155.3	159.9	155.1	159.7
Delta	157.1	147.4	148.9	151.3	153.4	152.5
Ebonyi	165.3	154.0	148.9	149.3	153.2	152.9
Edo	126.2	152.9	148.3	167.2	151.0	168.8
Ekiti	123.1	136.2	150.6	150.4	152.8	150.9
Enugu	185.3	156.1	151.8	148.5	153.4	150.0
Gombe	137.8	135.1	164.1	159.3	162.7	156.7
Imo	210.1	158.8	154.9	152.0	157.0	151.8
Jigawa	130.9	132.4	157.2	155.7	160.1	157.3
Kaduna	138.4	157.3	159.0	155.0	160.8	156.2
Kano	129.8	130.4	155.8	152.3	155.1	150.7
Katsina	144.8	124.5	155.2	142.6	157.1	143.7
Kebbi	125.4	145.9	150.5	151.4	152.9	153.0
Kogi	135.3	146.2	205.4	195.6	209.1	197.5
Kwara	101.7	145.1	154.6	177.9	160.4	182.7
Lagos	129.4	137.9	163.5	161.6	166.2	165.0
Nassarawa	111.8	121.0	147.5	149.4	147.5	149.8
Niger	116.8	132.5	152.9	157.7	153.8	159.0
Ogun	127.4	135.0	152.5	157.4	154.9	158.3
Ondo	124.8	127.2	157.9	154.7	162.0	157.4
Osun	128.7	128.4	157.2	157.5	156.9	157.3
Oyo	137.6	134.3	170.6	164.9	169.6	164.5
Plateau	124.9	124.4	159.9	157.6	162.2	159.9
Rivers	135.6	128.5	157.7	152.1	159.5	153.5
Sokoto	155.4	150.1	152.1	151.8	150.5	150.3
Taraba	144.7	138.0	161.4	154.8	160.7	154.4
Yobe	157.9	176.2	156.6	154.2	159.7	156.1
Zamfara	129.1	127.0	158.7	153.1	157.7	154.0

Note: Indices may not be used for inter-state price comparison because market baskets differ from State to State

