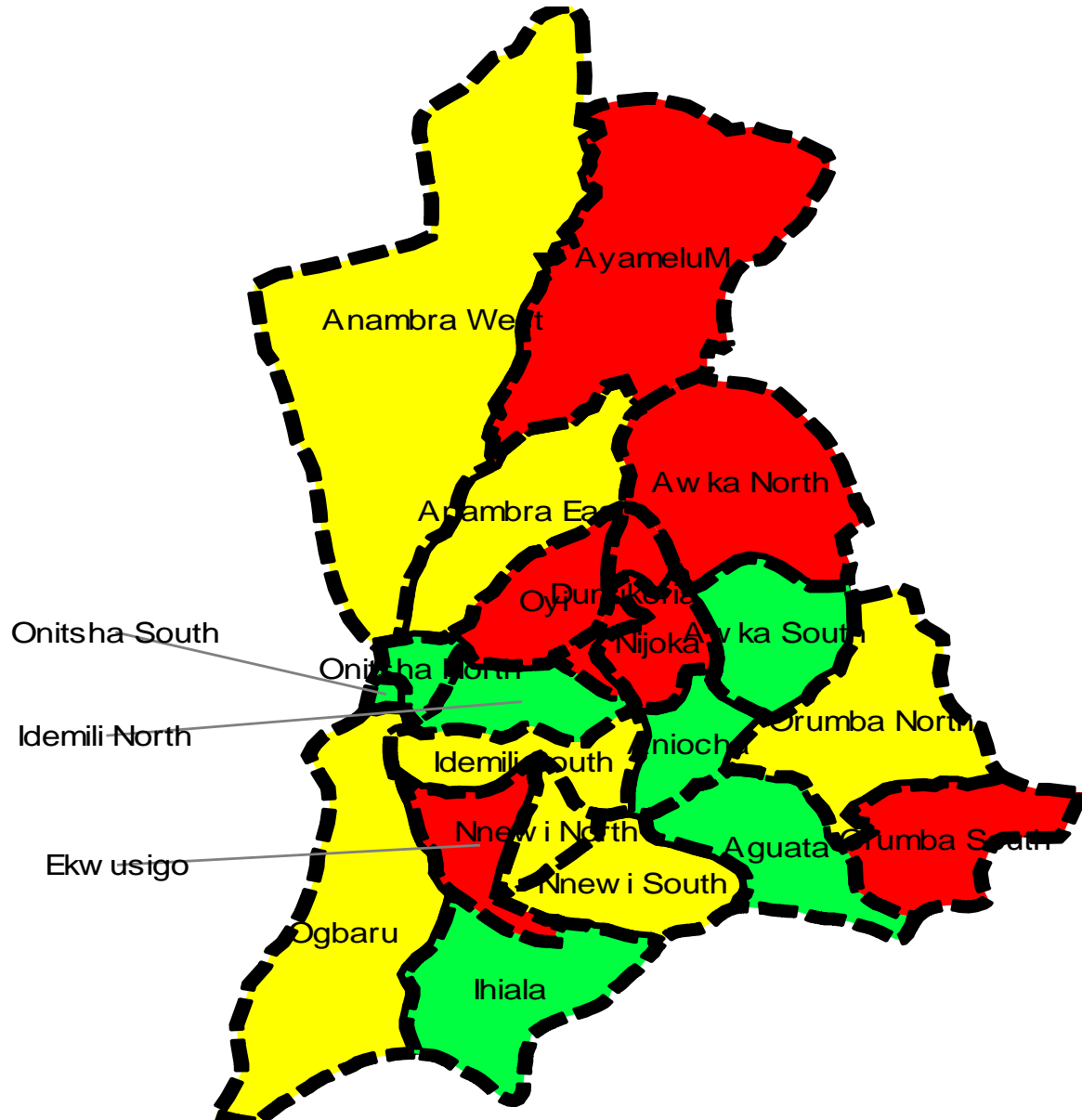


# MAP OF ANAMBRA STATE SHOWING THE 21 LOCAL GOVERNMENT AREAS



## FOREWORD

I want to say and proudly too, that Anambra State Statistical System has come a long way. Before the inception of Peter Obi administration, statistics had been suppressed even to the bar floor. Every Government that had come and gone played down on statistics as if it was a taboo. It was like they would say “there still remained one. I hate him because he never says good of me. He always says things I don’t like” 1Kgs 22:8.

But when our Governor, His Excellency Mr. Peter Obi came in, as a civilized person, he saw in statistics, a tool for measuring and for proving the level of responsiveness of the Government to the welfare yearnings of its citizens. Thus it serves as magic wand that propels every economy to its desired development status.

This can be attested by the ANIDS programme, his brainchild, and its successes. The ANIDS and MDGs are like the two post Keynesian economic theorists - Sir Roy F. Harrod and Evsey Domar, whom their independently works gave a unified solution to the economic problems of their contemporary world of 1930s.

This 2010 publication is indicative of far reaching improvement. This is because the 2008 and 2009 were just published June this 2011. It is therefore very exciting that immediately 2010 is following now. This is another measure of level of commitment of all participants – our creative thinker Governor, Mr. Peter Obi, the State Bureau of Statistics (SBS) staff, Ministries, Departments and Agencies (MDAs), the 21 Local Government Areas (LGAs) of the State, UNDP, World Bank, DFID and other stakeholders to ensure the development of Statistics in Anambra State in particular and Nigerian in general.

I believe users of statistics will find satisfaction in this production. Nevertheless, I extend a hand of welcome to all, for productive criticisms from their findings, which will boost improvement on future publication

Professor Chinyere Stella Okunna  
Honourable Commissioner  
Ministry of Economic planning and Budget  
Awka

## **ACKNOWLEDGEMENT**

The publication of this 2010 Statistical Year Book appends another feather to the indication of the zeal and enthusiasm of the Statistics Data Producers. Our Statistics friendly Governor, His Excellency, Mr. Peter Obi is the pivot figure that propels the entire engine of the growth of the Anambra State Statistical System.

The support of our Governor in terms of positive political will in embracing the State Bureau of Statistics (SBS) and giving necessary support and releases as and when due engenders this publication.

The one goal and one target spirit of the entire Anambra State Statistical family propels the easy gathering and processing of the data from all the stakeholders MDAs and Local Government Areas and by the staff of the SBS.

I want to also appreciate our technical patrons – NBS, who has lightened the task for us by developing the data collection formats/tools for easy statistical data collection. Also World Bank, UNDP, DFID etc. that have consistently given us their backing in one way or the other and ensuring staff skill development and equipment of the Bureau are not left out in our thanksgiving. All these forces work together to guarantee this 2010 SYB production. I say a big thanks to you all.

Izuchukwu, I. B. (JP)  
State Statistician General

## TABLE OF CONTENTS

FORWARD .....	i
ACKNOWLEDGEMENT .....	ii
TABLE OF CONTENT .....	iii
<b>SECTION I</b>	
<b>WEATHER AND CLIMATE</b>	<b>1</b>
Table 1.1 Average Monthly Maximum Temperature, 2009 – 2010.....	2
Table 1.2 Average Monthly Minimum Temperature, 2010.....	3
Table 1.3 Average Monthly Relative Humidity at 0900, 2009 – 2010. ....	4
<b>SECTION II</b>	
<b>POPULATION/GEOGRAPHY</b>	<b>5</b>
Table 2.1 Land Mass of Anambra State by LGA, 2010 .....	6
Table 2.2 Population by Sex and LGA, 1991 .....	7
Table 2.3 Population by Sex and LGA, 2006 .....	8
Table 2.4 Population Density by LGA .....	9
Table 2.5 Annual Population Projection, 2008 – 2010 .....	10
Table 2.6 Number of Registered Birth by Sex & LGA, 2009 – 2010 .....	11
Table 2.7 Number of Registered Death by Sex & LGA, 2009 – 2010 .....	12
<b>SECTION III</b>	
<b>HUMAN RESOURCES</b>	<b>13</b>
Table 3.1 State Public Service Manpower by Cadre, Sex & LGA, 2009 .....	14
Table 3.2 State Public Service Manpower by Cadre, Sex & LGA, 2010.....	15
<b>SECTION IV</b>	
<b>AGRICULTURE</b>	<b>16</b>
Table 4.1 Membership of Secondary Cooperative Society by Sex & LGA, 2010 .....	17
<b>SECTION V</b>	
<b>MOTOR VEHICLE</b>	<b>18, 19</b>
Table 5.1 Registration of Vehicles by Type & LGA, 2010 .....	20
Table 5.2 Traffic Offences by LGA, 2010 .....	21
Table 5.1 No. of Road Accidents by Type of Vehicle & LGA, 2010 .....	22
Table 5.1 No. of Road Accidents by Type & LGA, 2010 .....	23

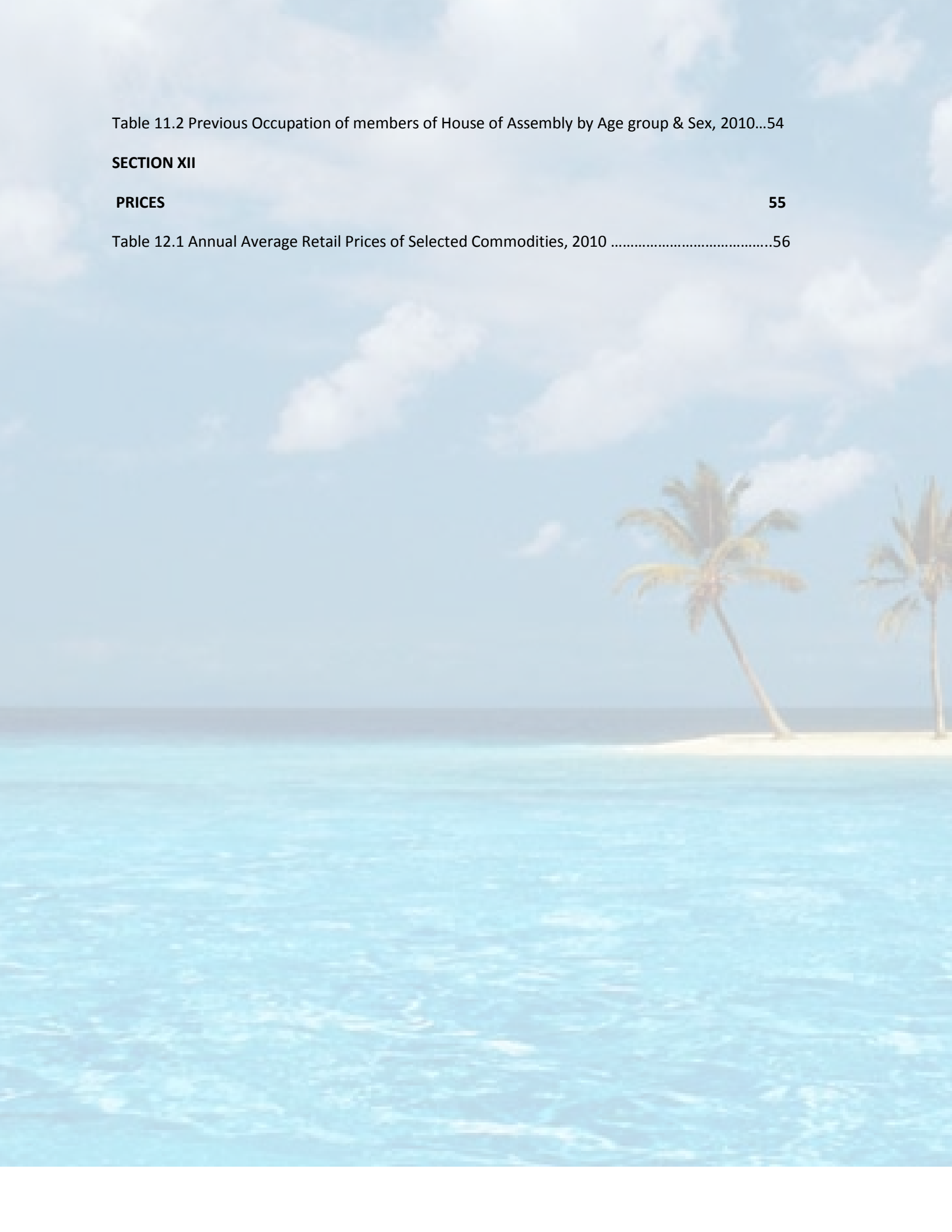
<b>SECTION VI</b>	
<b>HEALTH</b>	<b>24</b>
Table 6.1 No. of Categorized Health Establishments by Type & LGA, 2010 .....	25
Table 6.2 No of Reporting Health Facilities by LGA, 2010 .....	26
Table 6.3 No. of Beds in Health Facilities by LGA, 2010 .....	27
<b>SECTION VII</b>	
<b>JUSTICE AND CRIME</b>	<b>28, 29</b>
Table 7.1 No. of Fire Outbreak & Casualties by LGA, 2010 .....	30
Table 7.2 Population of Prison Inmates, 2009 – 2010 .....	31
Table 7.3 Distribution of Persons Committed to Prison by Sex, Age & LGA, 2009 .....	32
Table 7.4 Distribution of Persons Committed to Prison by Sex, Age & LGA, 2010 .....	33
<b>SECTION VIII</b>	
<b>PUBLIC FINANCE</b>	<b>34</b>
Table 8.1 Local Government Area Revenue by Type, 2010 .....	35
Table 8.2 LGA Capital Expenditure by Type of Assets, 2010 .....	36
Table 8.3 Estimates/Actual Expenditure by LGA, 2010 .....	37
Table 8.4 cost of Self Help Projects by Category & LGA, 2010 .....	38
<b>SECTION IX</b>	
<b>EDUCATION</b>	<b>39, 40</b>
Table 9.1 No. of Schools and Classrooms by LGA, 2010 .....	41
Table 9.2 Primary School Enrolment by Classes, Sex & LGA, 2010 .....	42
Table 9.3 Primary School Enrolment by Classes, Sex & LGA, 2010 (Cont'd).....	45
Table 9.4 No. of Teaching Staff in Primary Education by Qualification, Sex & LGA, 2010 .....	46
Table 9.5 No. of Teaching Staff in Secondary School by Qualification, Sex & LGA, 2010.....	47
<b>SECTION X</b>	
<b>COMMUNICATION</b>	<b>48</b>
Table 10.1 Post Offices and Postal Agencies by LGA, 2010 .....	49
Table 10.2 Number of Postal Articles Handled by LGA, 2010 .....	50
Table 10.3 Revenue Received from Postal Services by LGA, 2010 .....	51
<b>SECTION XI</b>	
<b>LEGISLATORS</b>	<b>52</b>
Table 11.1 Profile of State House of Assembly Members by Age group & Sex, 2010 .....	53

Table 11.2 Previous Occupation of members of House of Assembly by Age group & Sex, 2010...54

**SECTION XII**

**PRICES** **55**

Table 12.1 Annual Average Retail Prices of Selected Commodities, 2010 .....56



## SECTION I

### WEATHER AND CLIMATE

This section presents metrological data of Anambra state with respect to Average monthly maximum temperature, average minimum temperature and relative humidity from January 2010 to December 2010.

The data on Maximum temperature actually shows that the state experienced the hottest temperature in the month of March and also experienced the lowest minimum temperature in the month of December.

The state also recorded the highest Relative humidity in the month of September and the lowest in the month of December.

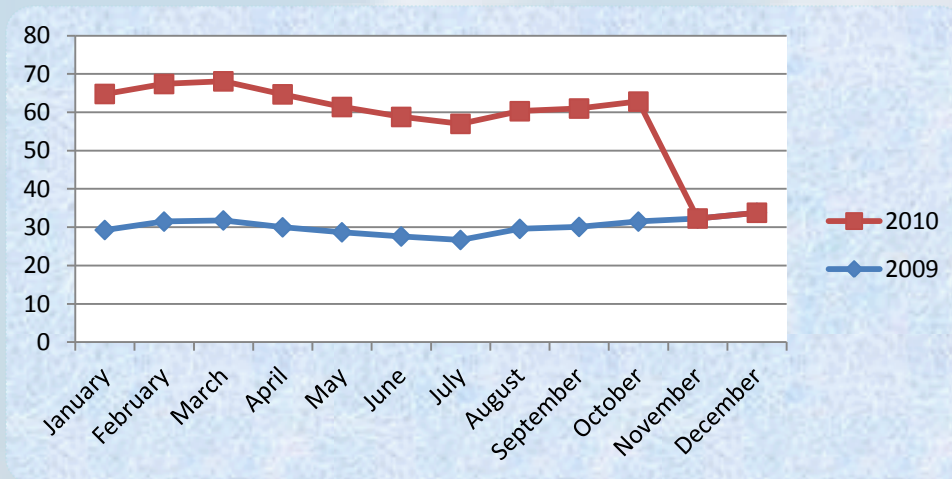


Figure 1. AVERAGE MONTHLY MAXIMUM TEMPERATURE, 2009-2010.

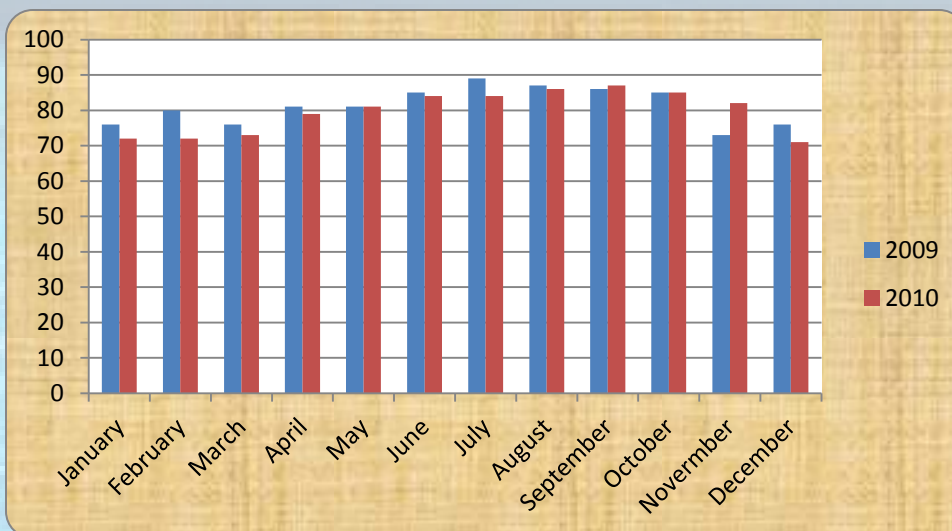


Figure 2. AVERAGE MONTHLY RELATIVE TEMPERATURE AT 0900, 2009-2010.

Table 1.1

## AVERAGE MONTHLY MAXIMUM TEMPERATURE, 2009 - 2010

0°c

MONTH	2009	2010
January	29.3	35.5
February	31.5	35.9
March	31.8	36.3
April	30	34.7
May	28.7	32.7
June	27.6	31.2
July	26.7	30.3
August	29.6	30.7
September	30.1	30.9
October	31.5	31.3
November	32.3	
December	33.8	
TOTAL	362.9	329.5
AVERAGE	30.24166667	27.45833333

Source: Federal Ministry of Aviation, Meteorological Department, Awka.



Table 1.2

**AVERAGE MONTHLY MINIMUM TEMPERATURE, 2011**

0 °c

<b>MONTH</b>	<b>2011</b>
January	18.6
February	23.01
March	25
April	24.5
May	23.9
June	23.6
July	22,8
August	23.3
September	23.1
October	23.1
November	23.4
December	17.9
<b>TOTAL</b>	<b>249.41</b>
<b>AVERAGE</b>	<b>20.78416667</b>

Source: Federal Ministry of Aviation, Meteorological Department, Awka.

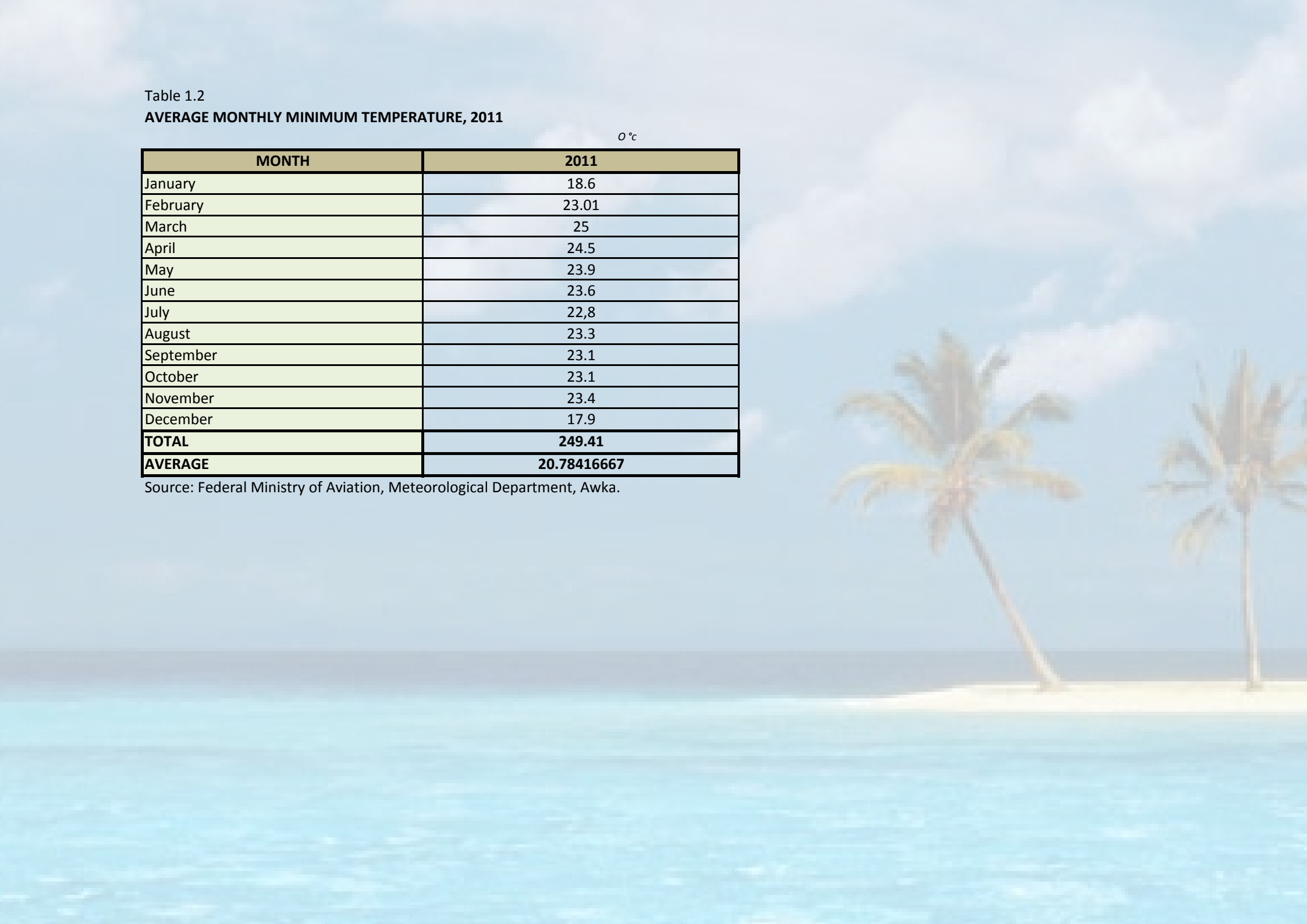


Table 1.3

**AVERAGE MONTHLY RELATIVE HUMIDITY AT 0900, 2009-2010**

Percent

<b>MONTH</b>	<b>2009</b>	<b>2010</b>
January	76	72
February	80	72
March	76	73
April	81	79
May	81	81
June	85	84
July	89	84
August	87	86
September	86	87
October	85	85
November	73	82
December	76	71
<b>Total</b>	<b>975</b>	<b>956</b>
<b>Average</b>	<b>81.25</b>	<b>79.66666667</b>

Source: Federal Ministry of Aviation, Meteorological Department, Awka.

## SECTION II

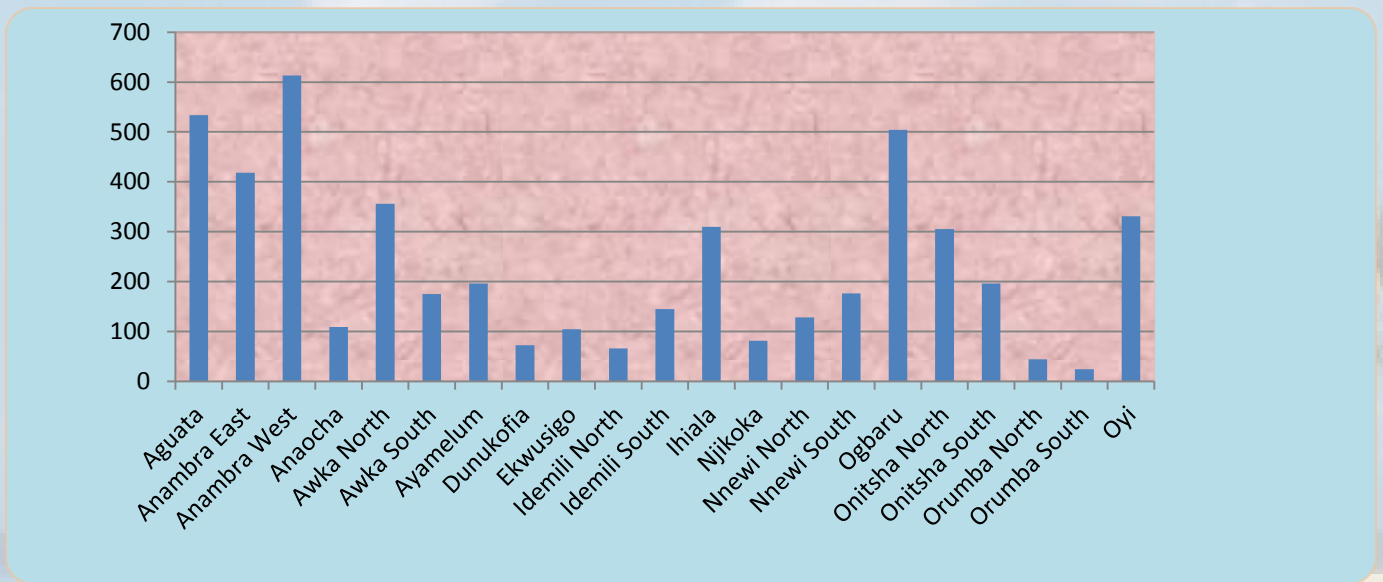
### GEOGRAPHY AND POPULATION

This section provides figures and data on the land mass of the state and the percentage of highland s and lowlands in the state.

It also presents the 1991 and 2006 census figures as reported by the National Population Commission and the projections thereof for 2009 and 2010 using the state’s growth rate of 2.83%.

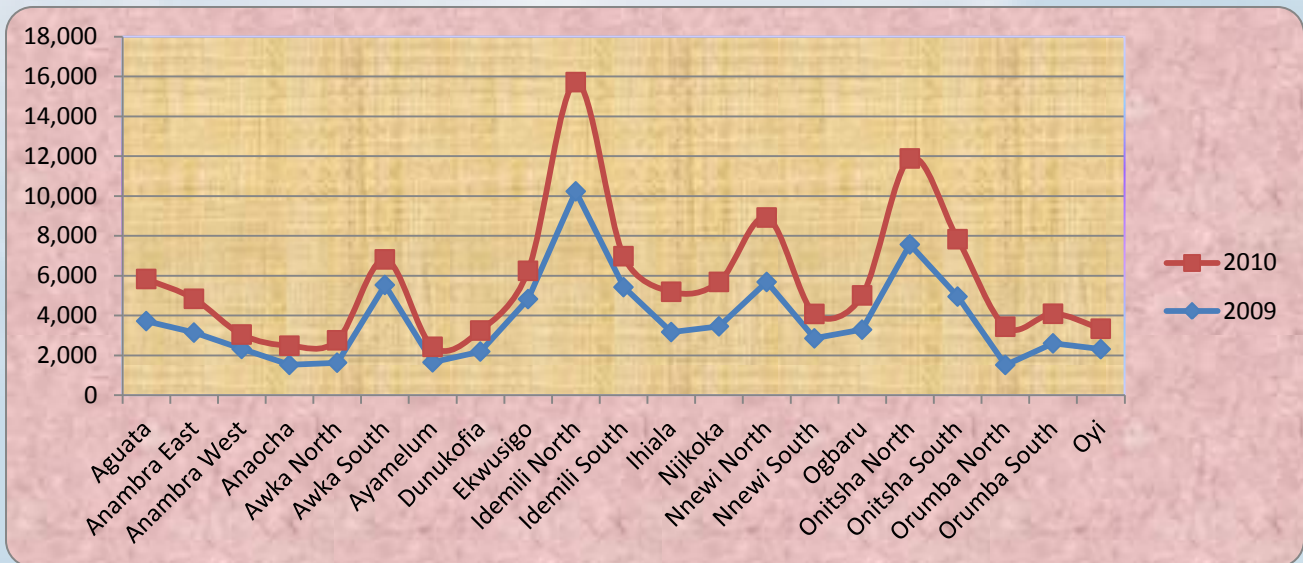
Presented also is the Registered birth and Registered death data for the year 2009 and 2010.

#### LANDMASS OF ANAMBRA STATE



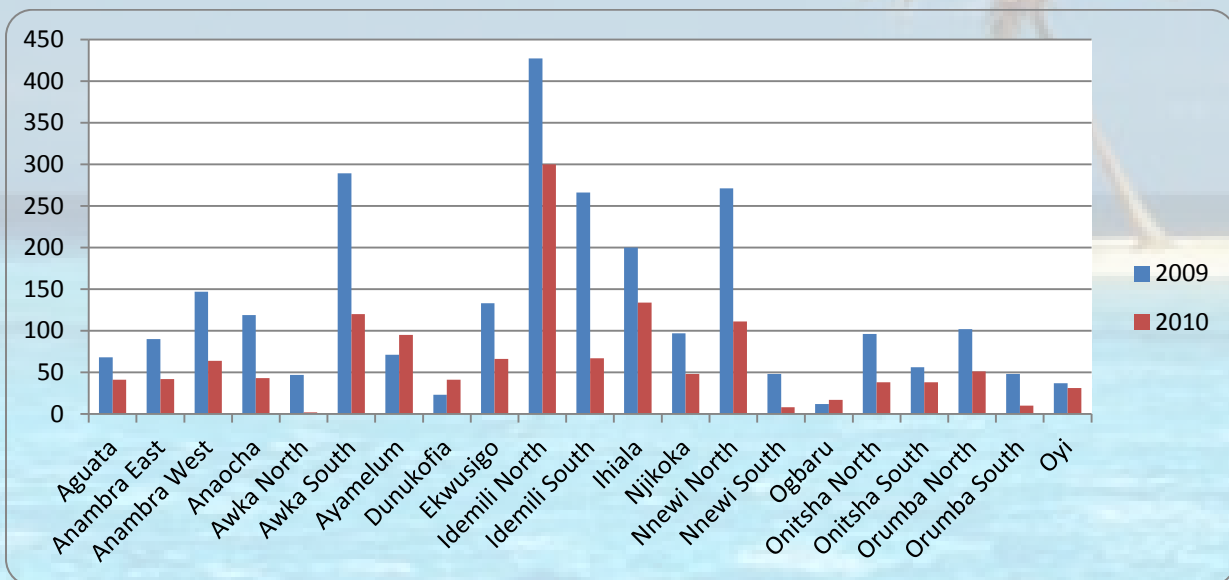
**Figure 3: Landmass of Anambra State showing the size of the local Government Areas in Square km.**

Anambra West local government area has the highest landmass in kilometers followed by Aguata down to Orumba south which has the lowest landmass.



**Figure 4. Number of Registered Birth by LGA, 2009-2010.**

It will be observed that the state recorded a higher percentage of birth in 2010 than in 2009 and that the death rate reduced minimally in 2010.



**Figure 5. Number of Registered Death, 2009-2010.**

**Table 2.1****LAND MASS OF ANAMBRA STATE BY LGA, 2010**

LGA	AREA	HIGHLANDS	PLAIN LANDS
	(SQ. KM.)	(≈ %)	(≈ %)
Aguata	534	0	18
Anambra East	418	0	12
Anambra West	613	15	21
Anaocha	109	36	50
Awka North	356	20	48
Awka South	175	14	61
Ayamelum	196	40	35
Dunukofia	72	28	40
Ekwusigo	104	25	44
Idemili North	66	34	38
Idemili South	145	20	25
Ihiala	310	22	40
Njikoka	81	18	42
Nnewi North	128	18	42
Nnewi South	176	34	38
Ogbaru	504	5	30
Onitsha North	305	11	39
Onitsha South	196	20	48
Orumba North	44	15	47
Orumba South	24	0	14
Oyi	331	10	40
<b>ANAMBRA STATE</b>	<b>4887</b>	<b>385</b>	<b>772</b>

Source: Ministry of Lands, Survey and Town Planning , Awka.

**Table 2.2****POPULATION BY SEX AND LGA, 1991**

LGA	POPULATION		
	MALE	FEMALE	TOTAL
Aguata	138,932	147,965	286,897
Anambra East	27,332	30,596	57,928
Anambra West	54,106	54,969	109,075
Anaocha	97,067	103,540	200,607
Awka North	29,513	31,210	60,723
Awka South	63,657	67,007	130,664
Ayamelum	43,600	42,219	85,819
Dunukofia	35,230	33,243	68,473
Ekwusigo	42,278	46,893	89,171
Idemili North	141,365	137,277	278,642
Idemili South	59,263	64,859	124,122
Ihiala	84,848	94,741	179,589
Njikoka	35,634	37,314	72,948
Nnewi North	61,617	59,446	121,063
Nnewi South	71,199	76,229	147,428
Ogbaru	97,564	94,197	191,761
Onitsha North	62,275	58,882	121,157
Onitsha South	70,834	64,456	135,290
Orumba North	61,541	65,935	127,476
Orumba South	44,915	47,801	92,716
Oyi	51,896	58,025	109,921
<b>ANAMBRA STATE</b>	<b>1,374,666</b>	<b>1,416,804</b>	<b>2,791,470</b>

Source: National Population Commission

**Table 2.3****POPULATION BY SEX AND LGA, 2006**

LGA	POPULATION		
	MALE	FEMALE	TOTAL
Aguata	211,154	224,883	436,037
Anambra East	41,540	46,501	88,041
Anambra West	82,232	83,544	165,776
Anaocha	147,526	157,364	304,890
Awka North	44,855	47,434	92,289
Awka South	96,749	101,840	198,589
Ayamelum	66,265	64,166	130,431
Dunukofia	54,544	50,524	105,068
Ekwusigo	64,256	71,269	135,525
Idemili North	214,852	208,639	423,491
Idemili South	90,070	98,575	188,645
Ihiala	128,955	143,991	272,946
Njikoka	54,158	56,712	110,870
Nnewi North	93,648	90,348	183,996
Nnewi South	108,211	115,856	224,067
Ogbaru	148,282	143,164	291,446
Onitsha North	94,648	89,491	184,139
Onitsha South	107,656	97,963	205,619
Orumba North	93,532	100,211	193,743
Orumba South	68,264	72,650	140,914
Oyi	78,874	88,189	167,063
<b>ANAMBRA STATE</b>	<b>2,090,271</b>	<b>2,153,314</b>	<b>4,243,585</b>

Source: National Population Commission

**Table 2.4****POPULATION DENSITY BY LGA, 2010**

LGA	POPULATION		
	AREA (SQ KM)	NUMBER	DENSITY
Aguata	534	286,897	537
Anambra East	418	57,928	139
Anambra West	613	109,075	178
Anaocha	109	200,607	1,840
Awka North	356	60,723	171
Awka South	175	130,664	747
Ayamelum	196	85,819	438
Dunukofia	72	68,473	951
Ekwusigo	104	89,171	857
Idemili North	66	278,642	4,222
Idemili South	145	124,122	856
Ihiala	310	179,589	579
Njikoka	81	72,948	901
Nnewi North	128	121,063	946
Nnewi South	176	147,428	838
Ogbaru	504	191,761	380
Onitsha North	305	121,157	397
Onitsha South	196	135,290	690
Orumba North	44	127,476	2,897
Orumba South	24	92,716	3,863
Oyi	331	109,921	332
<b>ANAMBRA STATE</b>	<b>4,887.0</b>	<b>2,791,470</b>	<b>571</b>

Source: National Population Commission



Table 2.5

**POPULATION PROJECTION OF ANAMBRA STATE**

<b>LGA</b>	<b>1991</b>	<b>2008</b>	<b>2009</b>	<b>2010</b>
Aguata	286,897	461066	474114	487532
Anambra East	57,928	93095	95729	98439
Anambra West	109,075	175292	180253	185354
Anaocha	200,607	322391	331515	340897
Awka North	60,728	97595	100357	103197
Awka South	130,664	209987	215930	222041
Ayamelum	85,819	137918	141821	145835
Dunukofia	73,473	118077	121418	124855
Ekwusigo	89,171	143305	147360	151531
Idemili North	278,642	447800	460472	473504
Idemili South	124,123	199475	205121	210926
Ihiala	179,589	288614	296781	305180
Njikoka	72,948	117233	120551	123962
Nnewi North	121,063	194558	200064	205726
Nnewi South	147,428	236928	243634	250528
Ogbaru	191,761	308175	316896	325865
Onitsha North	121,063	194558	200064	205726
Onitsha South	135,290	217422	223575	229902
Orumba North	127,476	204864	210662	216623
Orumba South	92,716	149002	153219	157555
Oyi	109,921	176652	181651	186792
<b>ANAMBRA STATE</b>	<b>2,796,382</b>	<b>4,494,007</b>	<b>4,621,187</b>	<b>4,751,967</b>

Note: The populations of 2008 -2010 were computed using Anambra State growth rate of 2.83%.

Table 2.6

## NUMBER OF REGISTERED BIRTH BY SEX, AND LGA, 2009 - 2010

LGA	2009			2010		
	MALE	FEMALE	TOTAL	MALE	FEMALE	TOTAL
Aguata	1,852	1,868	3,720	1123	991	2,114
Anambra East	1,669	1,475	3,144	889	807	1,696
Anambra West	1,260	1,063	2,323	161	562	723
Anaocha	865	656	1,521	514	449	963
Awka North	788	844	1,632	583	541	1,124
Awka South	2,818	2,715	5,533	1165	120	1,285
Ayamelum	872	777	1,649	414	366	780
Dunukofia	1,092	1,100	2,192	525	529	1,054
Ekwusigo	2,466	2,360	4,826	713	705	1,418
Idemili North	5,323	4,909	10,232	2846	2639	5,485
Idemili South	2,774	2,651	5,425	795	758	1,553
Ihiala	1,574	1,596	3,170	1086	936	2,022
Njikoka	1,674	1,783	3,457	1154	1076	2,230
Nnewi North	2,770	2,914	5,684	1626	1610	3,236
Nnewi South	1,066	1,787	2,853	624	603	1,227
Ogbaru	1,785	1,505	3,290	931	788	1,719
Onitsha North	3,955	3,612	7,567	2186	2132	4,318
Onitsha South	2,514	2,436	4,950	1506	1375	2,881
Orumba North	452	1,066	1,518	966	953	1,919
Orumba South	1,285	1,318	2,603	743	742	1,485
Oyi	1,139	1,173	2,312	518	508	1,026
<b>ANAMBRA STATE</b>	<b>39,993</b>	<b>39,608</b>	<b>79,601</b>	<b>21,068</b>	<b>19,190</b>	<b>40,258</b>

Source: National Population Commission

Table 2.7

**NUMBER OF REGISTERED DEATH BY SEX AND LGA, 2009 -2010**

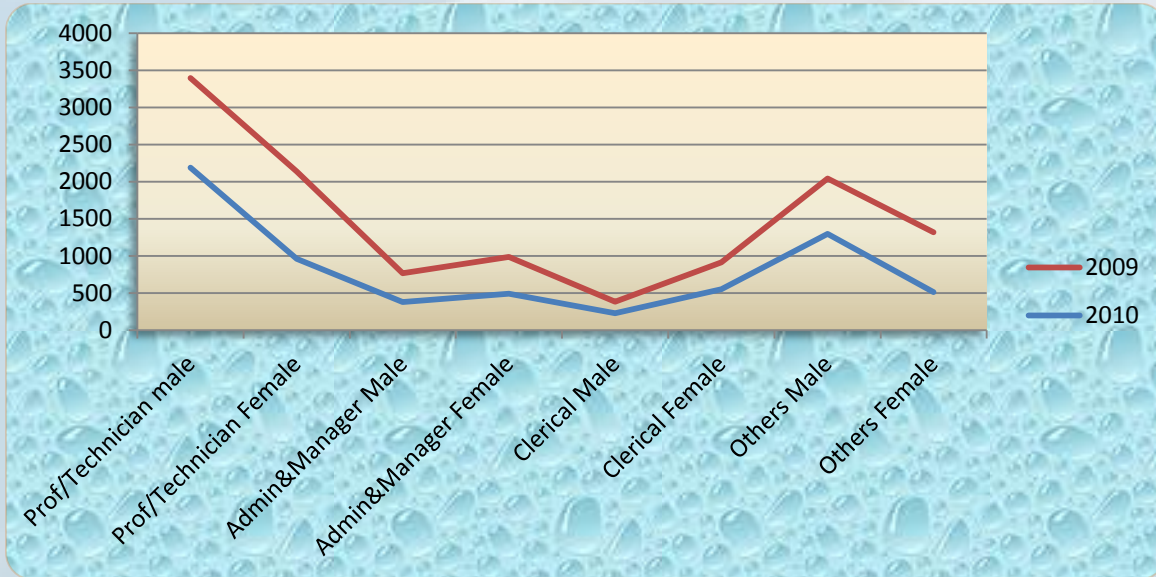
LGA	2009			2010		
	MALE	FEMALE	TOTAL	MALE	FEMALE	TOTAL
Aguata	46	22	68	26	15	41
Anambra East	60	30	90	27	15	42
Anambra West	95	52	147	40	24	64
Anaocha	81	38	119	27	16	43
Awka North	16	31	47	2	-	2
Awka South	191	98	289	76	44	120
Ayamelum	45	26	71	50	45	95
Dunukofia	14	9	23	27	14	41
Ekwusigo	70	63	133	40	26	66
Idemili North	256	171	427	192	108	300
Idemili South	125	141	266	33	34	67
Ihiala	126	74	200	80	54	134
Njikoka	67	30	97	34	14	48
Nnewi North	159	112	271	80	31	111
Nnewi South	37	11	48	6	2	8
Ogbaru	5	7	12	12	5	17
Onitsha North	60	36	96	24	14	38
Onitsha South	31	25	56	24	14	38
Orumba North	67	35	102	32	19	51
Orumba South	18	30	48	7	3	10
Oyi	29	8	37	21	10	31
<b>ANAMBRA STATE</b>	<b>1,598</b>	<b>1,049</b>	<b>2,647</b>	<b>860</b>	<b>507</b>	<b>1,367</b>

Source: National Population Commission

### SECTION III

#### HUMAN RESOURCES

This section presents data on the State Public service manpower for the year 2009 and 2010. The manpower of Public/Civil service is presented in category, sex and by Local government area.



**Figure 6. State Public Service Manpower by Cadre, Sex & LGA.**

**Table 3.1**

**STATE PUBLIC SERVICE MANPOWER BY CADRE, SEX AND LGA, 2009**

LGA	PROFESSIONAL/ TECHNICIAN		ADMIN & MANAGER		CLERICAL		OTHERS		TOTAL		
	M	F	M	F	M	F	M	F	M	F	BOTH SEXES
Aguata	126	112	14	45	2	42	84	5	226	204	430
Anambra East	79	42	8	15	9	19	55	29	151	105	256
Anambra West	12	2	8	3	4	6	18	3	42	14	56
Anaocha	78	55	19	37	3	15	54	35	154	142	296
Awka North	250	30	19	8	10	16	43	8	322	62	384
Awka South	240	99	49	53	19	77	155	90	463	319	782
Ayamelum	36	11	12	3	4	6	19	4	71	24	95
Dunukofia	41	28	12	9	2	19	24	18	79	74	153
Ekwusigo	51	32	11	22	5	16	76	17	143	87	230
Idemili North	394	105	44	43	13	56	56	19	507	223	730
Idemili South	62	41	23	25	1	24	78	18	164	108	272
Ihiala	80	41	18	22	4	21	90	20	192	104	296
Njikoka	112	81	39	61	63	51	59	66	273	259	532
Nnewi North	38	38	5	13	4	6	34	15	81	72	153
Nnewi South	33	15	5	6	2	14	25	7	65	42	107
Ogbaru	36	14	8	9	5	10	72	12	121	45	166
Onitsha North	270	86	41	49	60	68	148	61	519	264	783
Onitsha South	10	5	3	2	2	2	5	6	20	15	35
Orumba North	83	43	23	18	4	27	66	29	176	117	293
Orumba South	66	33	12	15	11	21	75	28	164	97	261
Oyi	83	44	5	30	2	32	59	20	149	126	275
Other State L.G.A	8	4	1	1		2	3	1	12	8	20
<b>ANAMBRA STATE</b>	<b>2,188</b>	<b>961</b>	<b>379</b>	<b>489</b>	<b>229</b>	<b>550</b>	<b>1,298</b>	<b>511</b>	<b>4,094</b>	<b>2,511</b>	<b>6,605</b>

Source: Civil Service Commission, Awka.

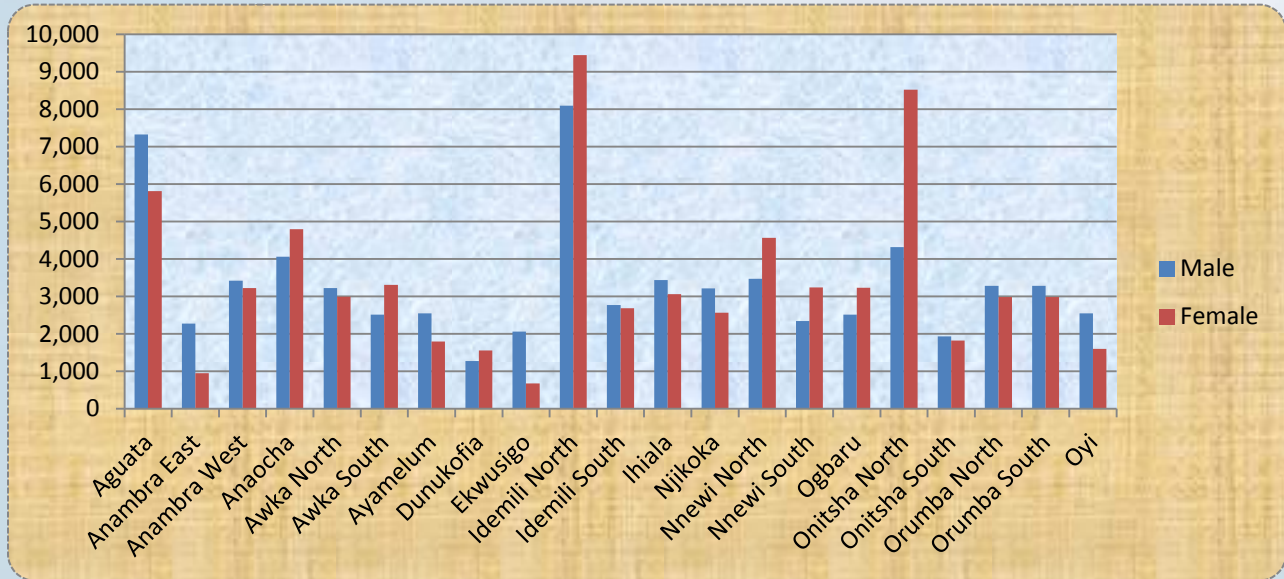
**Table 3.2****STATE PUBLIC SERVICE MANPOWER BY CADRE, SEX AND LGA, 2010**

LGA	PROFESSIONAL/ TECHNICIAN		ADMIN & MANAGER		CLERICAL		OTHERS		TOTAL		
	M	F	M	F	M	F	M	F	M	F	BOTH SEXES
Aguata	77	124	34	38	11	28	31	72	153	257	410
Anambra East	66	54	11	18	3	10	22	35	102	117	219
Anambra West	12	5	10	4	1	6	12	13	35	28	63
Anaocha	58	90	23	28	2	19	45	58	128	195	323
Awka North	38	37	3	4	4		30	35	75	76	151
Awka South	124	137	74	59	15	70	100	60	313	325	638
Ayamelum	25	9	6	6	12	6	28	20	71	41	112
Dunukofia	37	30	16	12	3	9	36	30	92	81	173
Ekwusigo	36	39	11	16	12	11	29	36	88	102	190
Idemili North	130	137	35	47	4	25	44	80	213	289	502
Idemili South	37	50	2	11	2	20	40	45	81	126	207
Ihiala	59	59	18	20	11	14	38	33	126	126	252
Njikoka	97	107	34	80	25	37	49	60	206	284	490
Nnewi North	28	30	3	11		2	21	21	52	64	116
Nnewi South	21	16	2	11	11	7	22	18	56	52	108
Ogbaru	31	24	5	9	2	14	26	30	64	77	141
Onitsha North	95	47	26	19	15	15	31	44	167	125	292
Onitsha South	7	14	2	1	1	1	8	14	18	30	48
Orumba North	81	60	31	28	17	24	37	30	166	142	308
Orumba South	57	45	18	34	1	22	30	40	106	141	247
Oyi	65	54	21	40	1	17	29	23	116	134	250
Other State L.G.A	25	6	4	1	3	6	34	9	66	22	88
<b>ANAMBRA STATE</b>	<b>1,206</b>	<b>1,174</b>	<b>389</b>	<b>497</b>	<b>156</b>	<b>363</b>	<b>742</b>	<b>806</b>	<b>2,493</b>	<b>2,840</b>	<b>5,333</b>

Source: Civil Service Commission, Awka.

**SECTION IV**  
**AGRICULTURE**

This section presents data on the membership of Co-operative Societies in the State.



**Figure 7. Membership of Co-operative Society by Sex & LGA, 2010**

**Table 4.1****MEMBERSHIP OF SECONDARY COOPERATIVE SOCIETY BY SEX AND LGA, 2010***(Number)*

LGA	SEX		TOTAL
	MALE	FEMALE	
Aguata	7,324	5,809	13133
Anambra East	2,275	947	3222
Anambra West	3,415	3,219	6634
Anaocha	4,056	4,790	8846
Awka North	3,225	2,988	6213
Awka South	2,511	3,309	5820
Ayamelum	2,544	1,799	4343
Dunukofia	1,277	1,552	2829
Ekwusigo	2,064	678	2742
Idemili North	8,089	9,440	17529
Idemili South	2,766	2,684	5450
Ihiala	3,437	3,063	6500
Njikoka	3,215	2,567	5782
Nnewi North	3,473	4,566	8039
Nnewi South	2,343	3,242	5585
Ogbaru	2,511	3,234	5745
Onitsha North	4,317	8,520	12837
Onitsha South	1,928	1,818	3746
Orumba North	3,278	2,986	6264
Orumba South	3,278	2,986	6264
Oyi	2,546	1,598	4144
<b>ANAMBRA STATE</b>	<b>69,872</b>	<b>71,795</b>	<b>141667</b>

*Source: Ministry of Agriculture, Awka.*



## SECTION IV

### MOTOR VEHICLE

The section contains data on the Registration of vehicles, traffic offences and Number of road accidents by type of vehicles.

It will be observed that saloon represents 15.4%, buses 13.5%, Lorries 1.1%, wagons 0.5% and motor cycles 69.5% as a percentage of the total number of vehicles registered in 2010.

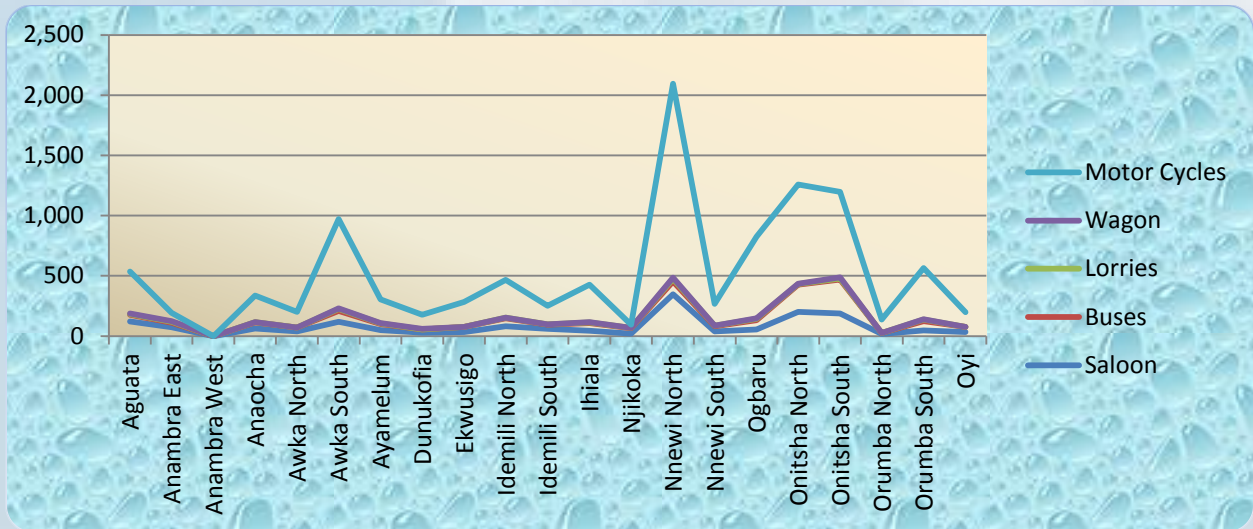
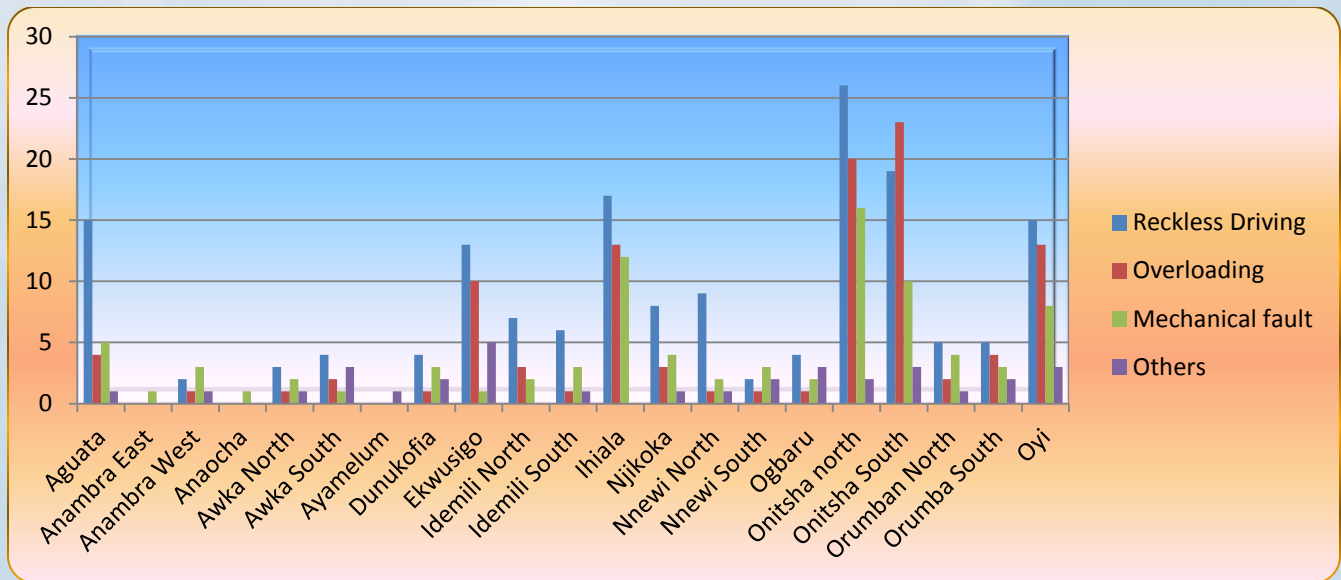


Figure viii. Registration of Vehicles by Type and LGA, 2010.



**Figure ix. Traffic Offenses by type of offences and LGA, 2010**

Reckless driving contributes more to traffic offences in the state followed closely by overloading and mechanical fault. It will also be noticed that traffic offences (in all the categories) were committed in the local governments in the descending order as follows: Onitsha North, Onitsha South, Ihiala, Oyi, Aguata, Ekwusigo with the least in Anambra East.

**Table 5.1****REGISTRATION OF VEHICLES BY TYPE AND LGA, 2010***(Number)*

LGA	REGISTRATION OF VEHICLE BY:					
	SALON	BUSES	LORRIES	WAGON	MOTOR CYCLES	OTHERS
Aguata	121	56	5	6	348	
Anambra East	73	38	8	4	69	
Anambra West						
Anaocha	63	51	1		221	
Awka North	39	31	2		128	
Awka South	119	89	18	3	743	
Ayamelum	49	51	6	1	198	
Dunukofia	29	27		4	118	
Ekwusigo	35	41	1		206	
Idemili North	81	66	7		312	
Idemili South	61	35	1		155	
Ihiala	45	63	5	4	309	
Njikoka	20	45	2		29	
Nnewi North	346	107	21	12	1,608	
Nnewi South	39	43	4		181	
Ogbaru	54	79	10	6	675	
Onitsha North	200	226	7	1	823	
Onitsha South	188	281	8	10	710	
Orumba North	19	7			111	
Orumba South	46	78	12	3	426	
Oyi	35	42			122	
<b>ANAMBRA STATE</b>	<b>1,662</b>	<b>1,456</b>	<b>118</b>	<b>54</b>	<b>7,492</b>	<b>0</b>

*Source: State Motor Registrar, Amawbia.*

**Table 5.2****TRAFFIC OFFENCES BY LGA, 2010***(Number)*

LGA	TYPE OF OFFENCES				TOTAL
	RECKLESS DRIVING	OVER LOADING	MECHANICAL FAULT	OTHERS	
Aguata	15	4	5	1	25
Anambra East			1		1
Anambra West	2	1	3	1	7
Anaocha			1		1
Awka North	3	1	2	1	7
Awka South	4	2	1	3	10
Ayamelum				1	1
Dunukofia	4	1	3	2	10
Ekwusigo	13	10	1	5	29
Idemili North	7	3	2		12
Idemili South	6	1	3	1	11
Ihiala	17	13	12		42
Njikoka	8	3	4	1	16
Nnewi North	9	1	2	1	13
Nnewi South	2	1	3	2	8
Ogbaru	4	1	2	3	10
Onitsha North	26	20	16	2	64
Onitsha South	19	23	10	3	55
Orumba North	5	2	4	1	12
Orumba South	5	4	3	2	14
Oyi	15	13	8	3	39
<b>ANAMBRA STATE</b>	<b>164</b>	<b>104</b>	<b>86</b>	<b>33</b>	<b>387</b>

*Source: State Police Commissioner's Office, Amawbia.*

**Table 5.3**

**NO OF ROAD ACCIDENTS BY TYPE OF VEHICLES AND LGA, 2010**

(Number)

LGA	TYPE OF VEHICLES														TOTAL
	PRIVATE				GOVERNMENT				COMMERCIAL					OTHERS	
	CARS	BUS	LORRY	M/Cycle	CARS	BUS	LORRY	M/Cycle	BUS	CARS	TAXIS	LORRIES	M/Cycle		
Aguata	5	2	1	5					9	2		4	15		43
Anambra East															0
Anambra West															0
Anaocha															0
Awka North															0
Awka South															0
Ayamelum															0
Dunukofia															0
Ekwusigo				9					44	8	9	10	40		120
Idemili North	30	1		1					2		10	1	2		47
Idemili South	4	2		2					4			13	3		28
Ihiala	10	1		3					10	3	1	4	6		38
Njikoka	13	1		4					11			2	16		47
Nnewi North	7								1			1	1		10
Nnewi South	2														2
Ogbaru															0
Onitsha North	16	2		2	1	2		2	9			7	22		63
Onitsha South	8								4		1	7	4		24
Orumba North		1													1
Orumba South	18									1					19
Oyi									13		10	10	23		56
<b>ANAMBRA STATE</b>	<b>113</b>	<b>10</b>	<b>1</b>	<b>26</b>	<b>1</b>	<b>2</b>	<b>0</b>	<b>2</b>	<b>107</b>	<b>14</b>	<b>31</b>	<b>59</b>	<b>132</b>	<b>0</b>	<b>498</b>

Source: State Police Commissioner's office, Amawbia

**Table 5.4****NUMBER OF ROAD ACCIDENTS BY TYPE AND LGA, 2010***(Number)*

LGA	NO OF VEHICLES				NO OF PERSONS					
	MINOR	FATAL	SERIOUS	TOTAL	INJURED			KILLED		
					MALE	FEMALE	TOTAL	MALE	FEMALE	TOTAL
Aguata	7	12	20	39	1	2	3	3	1	4
Anambra East	5	11	18	34	1	2	3	2	2	4
Anambra West	5	10	19	34	3	1	4	2	2	4
Anaocha	7	14	20	41	1	2	3	2		2
Awka North	8	16	17	41	2	1	3	2	2	4
Awka South	5	10	19	34	2	1	3	2	1	3
Ayamelum	9	13	19	41	2	3	5	3	1	4
Dunukofia	7	14	18	39	1	1	2		2	2
Ekwusigo	6	15	19	40	1	1	2	2	2	4
Idemili North	8	14	22	44		2	2	2	3	5
Idemili South	5	10	20	35	2	3	5	2	3	5
Ihiala	6	12	19	37	1	2	3	2	1	3
Njikoka	7	10	16	33	4	1	5	3	1	4
Nnewi North	7	11	20	38	2	1	3	2	1	3
Nnewi South	8	14	21	43	3	1	4	2	3	5
Ogbaru	6	11	23	40	1	1	2	1	2	3
Onitsha North	5	10	24	39	1	1	2	2	1	3
Onitsha South	8	15	18	41	2	1	3	1	2	3
Orumba North	7	13	18	38	1	3	4	2	3	5
Orumba South	7	10	19	36	2	1	3	4	1	5
Oyi	8	14	24	46	3	1	4	2	1	3
<b>ANAMBRA STATE</b>	<b>141</b>	<b>259</b>		<b>813</b>	<b>36</b>	<b>32</b>	<b>68</b>	<b>43</b>	<b>35</b>	<b>78</b>

*Source: State Police Commissioner's Office, Amawbia.*

## SECTION VI

### HEALTH

This section covers information on the Number of Categorized Health establishments by type and Local government Area. It also showcases the Number of Health Establishments that are actually reporting and vibrant and the Number of beds in the health facilities in the state.

General hospitals which are spread in all the local government areas represents 6%, cottage hospitals 0.2%, public health centers 54%, customary health center 1.8%, health posts 38%, Dispensary homes 0.66%, and Tertiary 0.2% as a percentage of the total health facilities.

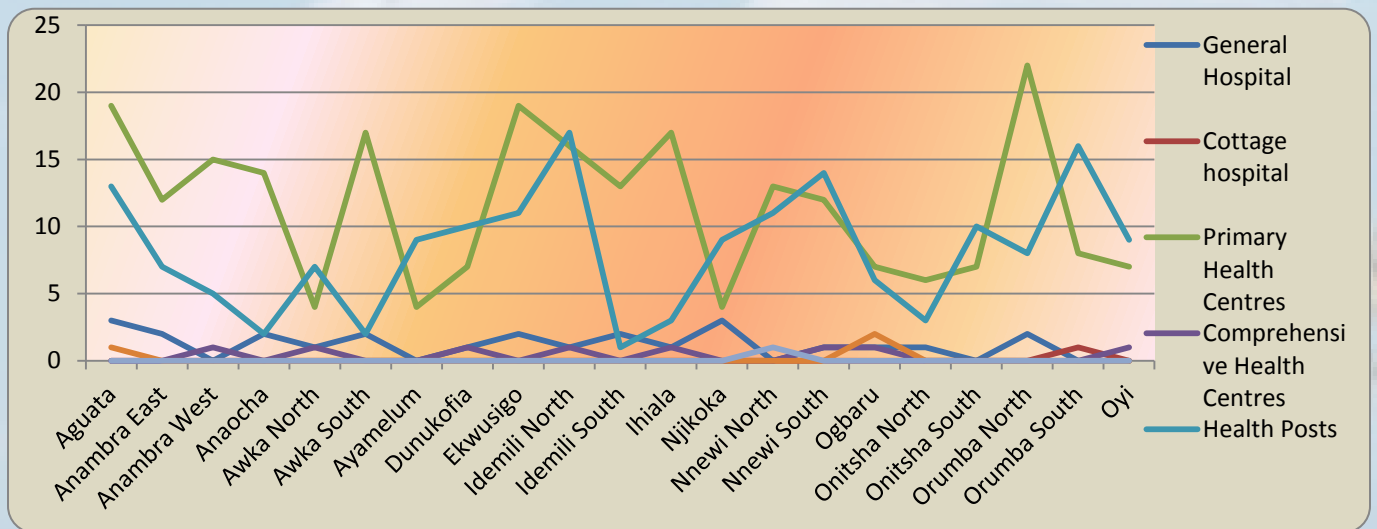


Figure x. Number of Categorized health Establishments by type and LGA, 2010.

Table 6.1

**NO OF CATEGORISED HEALTH ESTABLISHMENTS BY LGA, 2010**

<b>LGA</b>	<b>GENERAL HOSPITALS</b>	<b>COTTAGE HOSPITAL</b>	<b>PRIMARY HEALTH CENTRES</b>	<b>COMPREHENSIVE HEALTH CENTRES</b>	<b>HEALTH POSTS</b>	<b>DISPENSARY HOMES</b>	<b>TETIARY HOSPITAL</b>	<b>TOTAL</b>
Aguata	3	0	19	0	13	1	0	36
Anambra East	2	0	12	0	7	0	0	21
Anambra West	0	0	15	1	5	0	0	21
Anaocha	2	0	14	0	2	0	0	18
Awka North	1	0	4	1	7	0	0	13
Awka South	2	0	17	0	2	0	0	21
Ayamelum	0	0	4	0	9	0	0	13
Dunukofia	1	0	7	1	10	0	0	19
Ekwusigo	2	0	19	0	11	0	0	32
Idemili North	1	0	16	1	17	0	0	35
Idemili South	2	0	13	0	1	0	0	16
Ihiala	1	0	17	1	3	0	0	22
Njikoka	3	0	4	0	9	0	0	16
Nnewi North	0	0	13	0	11	0	1	25
Nnewi South	1	0	12	1	14	0	0	28
Ogbaru	1	0	7	1	6	2	0	17
Onitsha North	1	0	6	0	3	0	0	10
Onitsha South	0	0	7	0	10	0	0	17
Orumba North	2	0	22	0	8	0	0	32
Orumba South	0	1	8	0	16	0	0	25
Oyi	0	0	7	1	9	0	0	17
<b>ANAMBRA STATE</b>	<b>25</b>	<b>1</b>	<b>243</b>	<b>8</b>	<b>173</b>	<b>3</b>	<b>1</b>	<b>454</b>

Source: Ministry of Health, Awka.



Table 6.2

**NO. OF FUNCTIONAL HEALTH FACILITIES BY LGA, 2010**

LGA	HEALTH FACILITIES			PERCENTAGE REPORTING (%)
	TOTAL	FUNCTIONAL	NON- FUNCTIONAL	
	FACILITIES	FACILITIES	FACILITIES	
Aguata	35	31	4	88.57
Anambra East	22	21	1	95.45
Anambra West	21	16	5	76.19
Anaocha	18	15	3	83.33
Awka North	13	11	2	84.62
Awka South	21	21	0	100.00
Ayamelum	13	9	4	69.23
Dunukofia	19	11	8	57.89
Ekwusigo	32	31	1	96.88
Idemili North	35	31	4	88.57
Idemili South	14	13	1	92.86
Ihiala	22	22	0	100.00
Njikoka	16	16	0	100.00
Nnewi North	25	25	0	100.00
Nnewi South	28	25	3	89.29
Ogbaru	17	14	3	82.35
Onitsha North	10	10	0	100.00
Onitsha South	17	17	0	100.00
Orumba North	32	32	0	100.00
Orumba South	25	25	0	100.00
Oyi	17	17	0	100.00
<b>ANAMBRA STATE</b>	<b>452</b>	<b>413</b>	<b>39</b>	<b>1,905.23</b>

Source: Ministry of Health, Awka.

Table 6.3

**NO. OF BEDS IN HEALTH FACILITIES BY LGA, 2010**

<b>LGA</b>	<b>HEALTH FACILITIES</b>	<b>NO OF BEDS</b>	<b>HEALTH FACILITIES/BEDS RATIO</b>
Aguata	35	210	6
Anambra East	22	119	5
Anambra West	21	76	4
Anaocha	18	113	6
Awka North	13	117	9
Awka South	21	76	4
Ayamelum	13	60	5
Dunukofia	19	84	4
Ekwusigo	32	115	4
Idemili North	35	84	2
Idemili South	14	130	9
Ihiala	22	174	8
Njikoka	16	48	3
Nnewi North	25	74	3
Nnewi South	28	108	4
Ogbaru	17	65	4
Onitsha North	10	213	21
Onitsha South	17	12	1
Orumba North	32	244	8
Orumba South	25	90	4
Oyi	17	65	4
<b>ANAMBRA STATE</b>	<b>452</b>	<b>2,277</b>	<b>117</b>

Source: Ministry of Health, Awka.

## SECTION VII

### JUSTICE AND CRIME

This section provides information on the Number of Fire outbreaks and casualties, Population of prison inmates and the distribution of persons committed to prison.

It is can be observed that the proportion of male/ female persons committed to prison in 2009 is 95:5 while that of 2010 is 98:2. The number of male prisoners increased seriously by 43.6% while their female counterparts decreased drastically by 61% in 2010.

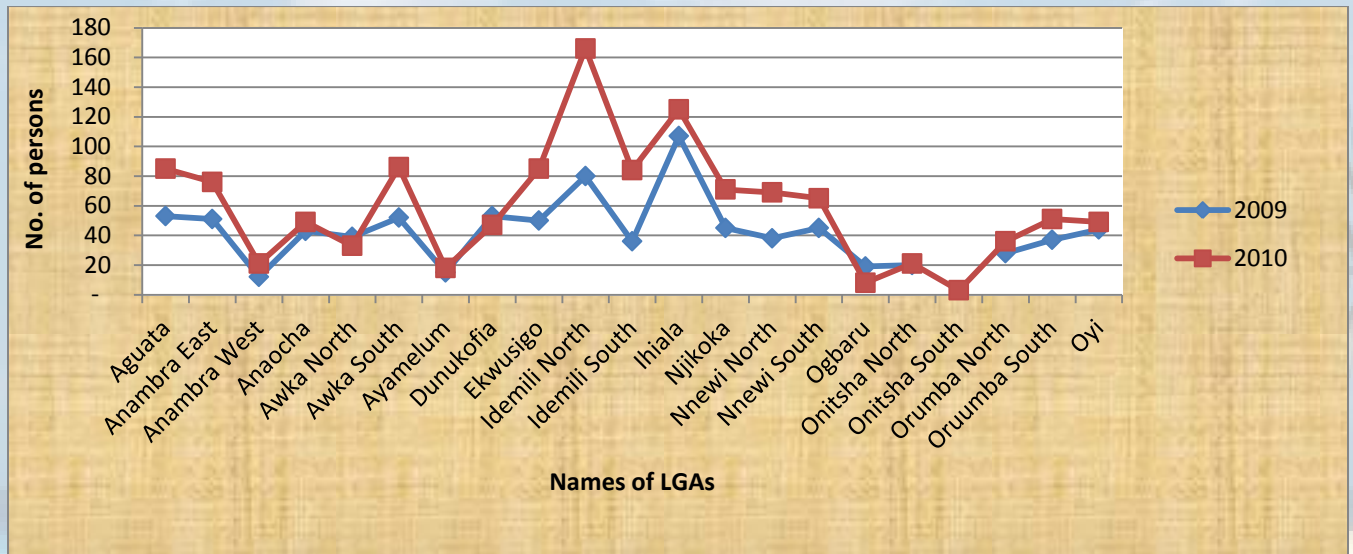
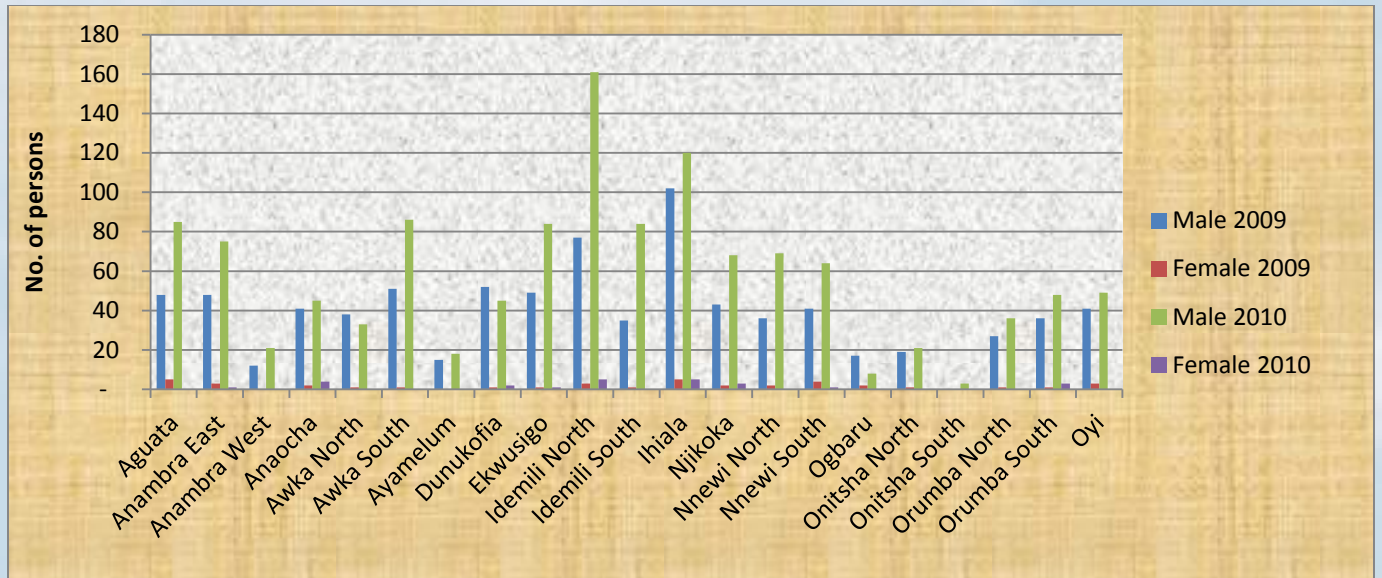


Figure X. Population of Prison inmates in the state.



**Figure XI. Distribution of Persons committed to Prison by Sex, 2009-2010.**

**Table 7.1****NUMBER OF FIRE OUTBREAK AND CASUALTIES BY LGA, 2010**

<b>LGA</b>	<b>Number of Fire Outbreak</b>	<b>Number of Person Injured</b>	<b>Number of Person Saved</b>	<b>Number of Death</b>	<b>Estimated Value of Properties Lost (N)</b>
Aguata	5		3		99,900,000.00
Anambra East	2	2	2		100,000,000.00
Anambra West	2	2	1		50,000,000.00
Anaocha	1		2		100,000.00
Awka North	4	1	2		50,000,000.00
Awka South	9	3	10		400,000,000.00
Ayamelum	2		1		100,000.00
Dunukofia	3		1		50,000,000.00
Ekwusigo	3		3		50,000,000.00
Idemili North	10	1	2		200,000,000.00
Idemili South	7	1	5		120,100,000.00
Ihiala	5	5	10	2	250,000,000.00
Njikoka	6		1		100,000,000.00
Nnewi North	9	2	4		300,000,000.00
Nnewi South	2	1	2		700,000.00
Ogbaru	9		2		200,000,000.00
Onitsha North	14	3	10		600,000,000.00
Onitsha South	9	1	6		450,000,000.00
Orumba North	2		2		59,086,600.00
Orumba South	2		2		40,000,000.00
Oyi	4		1		100,000,000.00
<b>ANAMBRA STATE</b>	<b>110</b>	<b>22</b>	<b>72</b>	<b>2</b>	<b>3,219,986,600.00</b>

Source: Anambra State Fire Service, Awka.

**Table 7.2****POPULATION OF PRISON INMATES, 2009 - 2010**

LGA	2009			2010		
	MALE	FEMALE	TOTAL	MALE	FEMALE	TOTAL
Aguata	48	5	53	85		85
Anambra East	48	3	51	75	1	76
Anambra West	12		12	21		21
Anaocha	41	2	43	45	4	49
Awka North	38	1	39	33		33
Awka South	51	1	52	86		86
Ayamelum	15		15	18		18
Dunukofia	52	1	53	45	2	47
Ekwusigo	49	1	50	84	1	85
Idemili North	77	3	80	161	5	166
Idemili South	35	1	36	84		84
Ihiala	102	5	107	120	5	125
Njikoka	43	2	45	68	3	71
Nnewi North	36	2	38	69		69
Nnewi South	41	4	45	64	1	65
Ogbaru	17	2	19	8		8
Onitsha North	19	1	20	21		21
Onitsha South				3		3
Orumba North	27	1	28	36		36
Orumba South	36	1	37	48	3	51
Oyi	41	3	44	49		49
<b>ANAMBRA STATE</b>	<b>828</b>	<b>39</b>	<b>867</b>	<b>1,223</b>	<b>25</b>	<b>1,248</b>

Source: Nigeria Prisons Service, Awka.

**Table 7.3**

**DISTRIBUTION OF PERSONS COMMITTED TO PRISON BY SEX, AGE AND LGA, 2009**

LGA	DISTRIBUTION OF PERSONS COMMITTED TO PRISON BY SEX, AGE AND LGA, 2009											
	UNDER 18 -20 YEARS			21-25 YEARS			26 - 50 YEARS			51 YEARS & ABOVE		
	MALE	FEMALE	TOTAL	MALE	FEMALE	TOTAL	MALE	FEMALE	TOTAL	MALE	FEMALE	TOTAL
Aguata	10		10	19	2	21	18	3	21	1		1
Anambra East	12		12	10	1	11	24	2	26	2		2
Anambra West	1		1	1		1	9		9	1		1
Anaocha	6		6	8		8	21	1	22	6	1	7
Awka North	6		6	8	1	9	20		20	4		4
Awka South	7		7	18		18	16	3	19	8		8
Ayamelum	2		2	7		7	6		6			0
Dunukofia	14		14	19		19	16	1	17	3		3
Ekwusigo	14		14	9		9	23	1	24	3		3
Idemili North	11		11	16		16	44	2	46	6	1	7
Idemili South	8		8	8		8	16	1	17	3		3
Ihiala	10	2	12	22		22	59	2	61	11	1	12
Njikoka	7	1	8	13		13	17	1	18	6		6
Nnewi North	5		5	9	1	10	18	1	19	4		4
Nnewi South	10	2	12	12	1	13	17	1	18	2		2
Ogbaru	4		4	1	1	2	12	1	13			0
Onitsha North	4		4	5		5	9	1	10	1		1
Onitsha South			0			0			0			0
Orumba North	2		2	6		6	17	1	18	2		2
Orumba South	8		8	7		7	18	1	19	3		3
Oyi	11		11	12		12	17	2	19	1	1	2
<b>ANAMBRA STATE</b>	<b>152</b>	<b>5</b>	<b>157</b>	<b>210</b>	<b>7</b>	<b>217</b>	<b>397</b>	<b>25</b>	<b>422</b>	<b>67</b>	<b>4</b>	<b>71</b>

Source: Nigeria Prisons Service, Awka.

TABLE 7.4

**DISTRIBUTION OF PERSONS COMMITTED TO PRISON BY SEX, AGE AND LGA, 2010**

LGA	UNDER 18 -20 YEARS			21-25 YEARS			26 - 50 YEARS			51 YEARS & ABOVE		
	MALE	FEMALE	TOTAL	MALE	FEMALE	TOTAL	MALE	FEMALE	TOTAL	MALE	FEMALE	TOTAL
Aguata	21		21	12		15	44		44	5		5
Anambra East	14		14	18		18	36	1	37	7		7
Anambra West	2		2	5		5	12		12	2		6
Anaocha	5		5	9		10	25	1	26	6		8
Awka North	6		6	15	1	15	11		11	1		1
Awka South	12		12	22		22	47		47	5		5
Ayamelum	5		5	5		5	8		8			
Dunukofia	6	1	7	13		113	22	1	23	4		4
Ekwusigo	14		14	13		13	49		50	8		8
Idemili North	26		26	61		62	64	1	67	10	1	11
Idemili South	9		9	16	1	16	56	3	56	3		3
Ihiala	15		15	39		41	46		9	20		20
Njikoka	6	1	7	15	2	15	41	3	42	6	1	7
Nnewi North	7		7	12		12	41	1	41	9		9
Nnewi South	12		12	17		18	30		30	5		5
Ogbaru	1		1	2	1	2	4		4	1		1
Onitsha North	5		5	4		4	11		11	1		1
Onitsha South	2		2				1		1			
Orumba North	3		3	8		8	22		22	3		3
Orumba South	6		6	11	1	12	30	1	31	1	1	2
Oyi	6		6	22		22	16		16	6		6
<b>ANAMBRA STATE</b>	<b>183</b>	<b>2</b>	<b>185</b>	<b>319</b>	<b>6</b>	<b>428</b>	<b>616</b>	<b>12</b>	<b>588</b>	<b>103</b>	<b>5</b>	<b>112</b>

Source: Nigeria Prisons Service, Awka.



## SECTION VIII

### PUBLIC FINANCE

This section contain data on local government area revenue, Capital expenditure, Estimated/Actual expenditure and Cost of self help projects by category in the 21 local government areas in Anambra state. Although some local government areas could not furnish the State bureau of Statistics with enough data.

The sources of revenue ranges from statutory allocation, vat, 13% derivation, direct tax, excess derivation, fines, fees and licenses and other income.

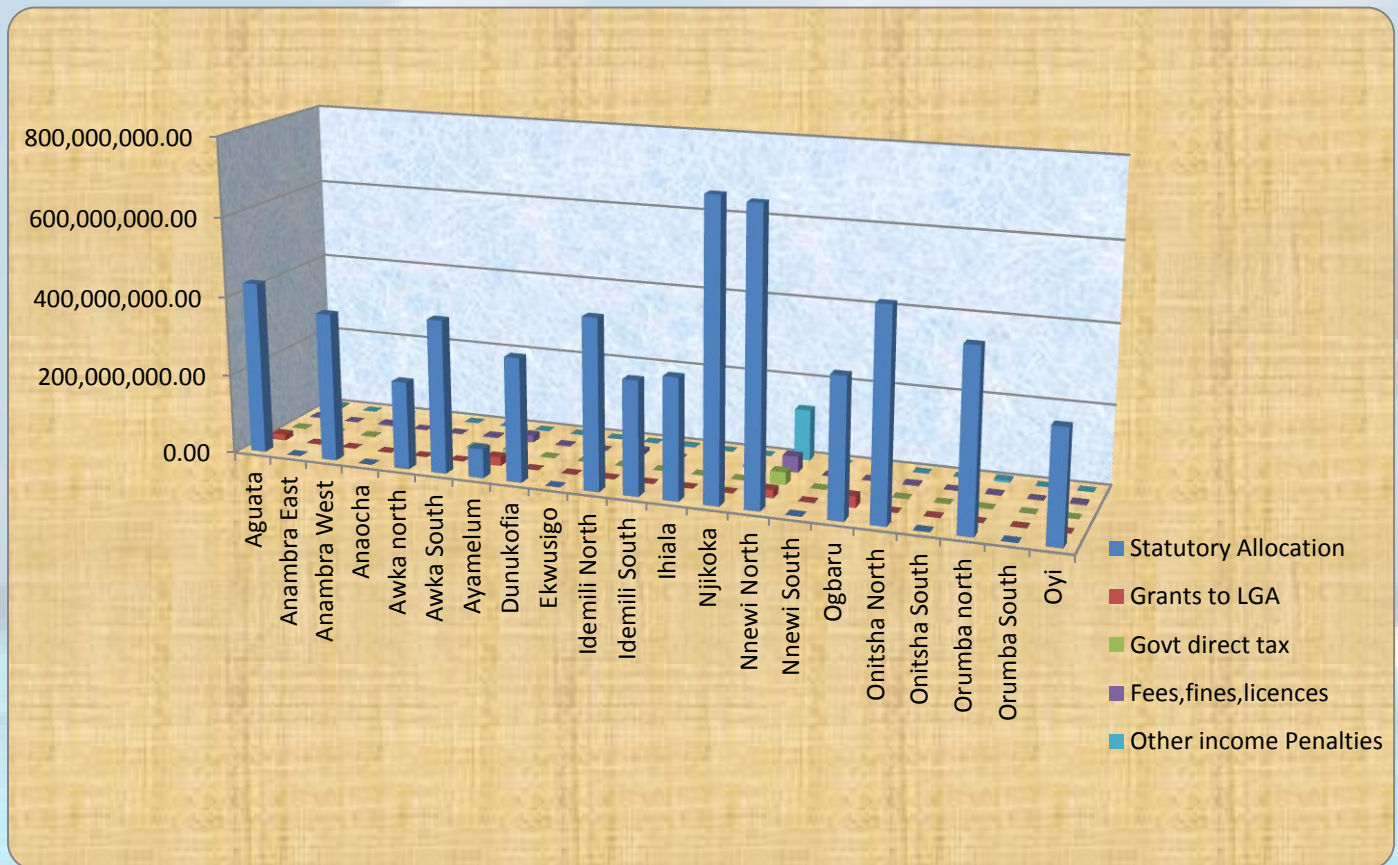


Figure XII. LOCAL GOVERNMENT REVENUE BY TYPE, 2010

**Table 8.1****LOCAL GOVERNMENT AREA REVENUE BY TYPE, 2010**

(N'000)

<b>LGA</b>	<b>STATUTORY ALLOCATION</b>	<b>GRANTS TO LGA</b>	<b>GOVERNMENT DIRECT TAXES</b>	<b>FEES, FINES LICENCES AND OTHERS</b>	<b>OTHER INCOME PENALTIES</b>	<b>TOTAL</b>
Aguata	432,000,000.00	15,000,000.00	1,447,000.00	2,744,000.00	4,166,000.00	455,357,000.00
Anambra East						0.00
Anambra West	372,022,521.90		1,636,676.50	3,991,640.52	657,761.12	378,308,600.04
Anaocha						0.00
Awka North	220,079,471.31		15,400.00	621,630.00	570,930.00	221,287,431.31
Awka South	384,298,965.75		4,234,780.00	3,339,020.00	537,451.00	392,410,216.75
Ayamelum	72,942,000.00	21,416,706.00	9,055,000.00	18,090,000.00		121,503,706.00
Dunukofia	310,538,088.06		163,450.00	1,630,300.00		312,331,838.06
Ekwusigo						0.00
Idemili North	426,784,412.00			9,732,850.00		436,517,262.00
Idemili South	285,043,641.00		62,600.00	1,769,075.00	931,500.00	287,806,816.00
Ihiala	302,365,660.00		242,270.00	3,106,620.00		305,714,550.00
Njikoka	738,154,040.00		131,830.00	4,013,029.00		742,298,899.00
Nnewi North	726,636,482.00	20,000,000.00	32,010,000.00	40,550,100.00	129,000,000.00	948,196,582.00
Nnewi South						0.00
Ogbaru	346,647,842.05	28,251,500.00		1,192,320.00	5,014,698.74	381,106,360.79
Onitsha North	519,800,174.14		626,200.00	2,539,570.00		522,965,944.14
Onitsha South						0.00
Orumba North	445,162,595.00		58,300.00	1,632,319.00	5,053,065.00	451,906,279.00
Orumba South						0.00
Oyi	279,719,853.00		98,250.00	2,833,620.00		282,651,723.00
<b>ANAMBRA STATE</b>	<b>5,862,195,746.21</b>	<b>84,668,206.00</b>	<b>49,781,756.50</b>	<b>97,786,093.52</b>	<b>145,931,405.86</b>	<b>6,240,363,208.09</b>

Source: Ministry of Local Government and Chieftancy matters, Awka.

**Table 8.2****LGA CAPITAL EXPENDITURE BY TYPE OF ASSETS, 2010**

(N'000)

<b>LGA</b>	<b>RESIDENTIAL BUILDINGS</b>	<b>NON-RESIDENTIAL BUILDINGS</b>	<b>OTHER CONSTRUCTION</b>	<b>TRANSPORT AND EQUIPMENT</b>	<b>MACHINE AND EQUIPMENT</b>	<b>OTHERS</b>	<b>TOTAL</b>
Aguata	43,915,000.00	41,943,000.00	103,305,000.00	1,463,900.00	4,152,000.00	12,031,400.00	<b>206,810,300.00</b>
Anambra East							<b>0.00</b>
Anambra West	5,090,000.00	77,382,943.75	12,360,270.00	89,386,500.00	11,312,380.00	9,951,418.00	<b>205,483,511.75</b>
Anaocha							<b>0.00</b>
Awka North	4,984,000.00	44,812,340.00	69,360,819.05				<b>119,157,159.05</b>
Awka South		6,638,392.13	14,459,470.00	61,937,548.92	9,390,000.00	54,082,125.00	<b>146,507,536.05</b>
Ayamelum				4,010,000.00	1,800,000.00		<b>5,810,000.00</b>
Dunukofia			6,880,000.00	23,291,600.00		292,642,665.00	<b>322,814,265.00</b>
Ekwusigo							<b>0.00</b>
Idemili North			21,566,600.00			17,792,200.00	<b>39,358,800.00</b>
Idemili South		47,722,015.53	10,298,000.00	15,856,590.00		46,814,475.00	<b>110,393,080.53</b>
Ihiala	11,033,000.00	55,411,070.00	82,598,510.00	146,752,920.00		10,125,310.00	<b>305,920,810.00</b>
Njikoka		6,917,000.00	42,195,000.00			800,000.00	<b>49,912,000.00</b>
Nnewi North	34,342,000.00	34,818,534.00	1,532,700.00		27,500.00		<b>70,720,734.00</b>
Nnewi South							<b>0.00</b>
Ogbaru		14,943,727.00	47,773,408.04			15,235,012.50	<b>77,952,147.54</b>
Onitsha North			5,865,000.00	75,166,749.24		20,155,500.00	<b>101,187,249.24</b>
Onitsha South							<b>0.00</b>
Orumba North		3,545,112.50	5,180,000.00	198,624,423.40	9,150,000.00	40,542,238.81	<b>257,041,774.71</b>
Orumba South							<b>0.00</b>
Oyi			43,397,976.00		1,650,000.00	26,770,878.00	<b>71,818,854.00</b>
<b>ANAMBRA STATE</b>	<b>99,364,000.00</b>	<b>334,134,134.91</b>	<b>456,474,753.09</b>	<b>616,490,231.56</b>	<b>37,481,880.00</b>	<b>546,943,222.31</b>	<b>2,090,888,221.87</b>

Source: Ministry of Local Government and Chieftaincy Matters, Awka.

**Table 8.3****ESTIMATED/ACTUAL EXPENDITURE BY LGA, 2010**

(N'000)

<b>LGA</b> (1)	<b>ESTIMATED EXPENDITURE</b> (2)	<b>ACTUAL EXPENDITURE</b> (3)	<b>DIFFERENCE</b> (4) = (3) - (2)	<b>% DIFFERENCE</b> (5) = [(4)/(2)] x 100
Aguata	935,908.00	479,950.70	<b>-455,957.30</b>	<b>-48.7%</b>
Anambra East			<b>0.00</b>	<b>#DIV/0!</b>
Anambra West	954,462,668.00	536,631,195.24	<b>-417,831,472.76</b>	<b>-43.8%</b>
Anaocha			<b>0.00</b>	<b>#DIV/0!</b>
Awka North	704,018,900.00	349,093,329.09	<b>-354,925,570.91</b>	<b>-50.4%</b>
Awka South	996,565,532.00	388,991,330.82	<b>-607,574,201.18</b>	<b>-61.0%</b>
Ayamelum	879,716,726.18	354,529,205.45	<b>-525,187,520.73</b>	<b>-59.7%</b>
Dunukofia	1,631,228,251.00	570,274,984.20	<b>-1,060,953,266.80</b>	<b>-65.0%</b>
Ekwusigo			<b>0.00</b>	<b>#DIV/0!</b>
Idemili North	222,020,000.00	124,185,699.19	<b>-97,834,300.81</b>	<b>-44.1%</b>
Idemili South	915,848,741.00	371,121,831.06	<b>-544,726,909.94</b>	<b>-59.5%</b>
Ihiala	1,235,610,780.00	536,046,550.00	<b>-699,564,230.00</b>	<b>-56.6%</b>
Njikoka	727,800,000.00	410,010,256.03	<b>-317,789,743.97</b>	<b>-43.7%</b>
Nnewi North	1,013,406,612.00	746,762,817.86	<b>-266,643,794.14</b>	<b>-26.3%</b>
Nnewi South			<b>0.00</b>	<b>#DIV/0!</b>
Ogbaru	1,163,979,946.00	330,949,171.17	<b>-833,030,774.83</b>	<b>-71.6%</b>
Onitsha North	968,323,330.00	388,824,835.83	<b>-579,498,494.17</b>	<b>-59.8%</b>
Onitsha South			<b>0.00</b>	<b>#DIV/0!</b>
Orumba North	1,104,446,593.00	531,280,026.40	<b>-573,166,566.60</b>	<b>-51.9%</b>
Orumba South			<b>0.00</b>	<b>#DIV/0!</b>
Oyi	935,933,000.00	787,705,520.00	<b>-148,227,480.00</b>	<b>-15.8%</b>
<b>ANAMBRA STATE</b>	<b>13,454,296,987.18</b>	<b>6,426,886,703.04</b>	<b>-7,027,410,284.14</b>	<b>-52.2%</b>

Source: Ministry of Local Government and Chieftaincy Matters, Awka.

**Table 8.4****COST OF SELF-HELP PROJECTS BY CATEGORY AND LGA, 2010**

(N'000)

<b>LGA</b>	<b>ROADS</b>	<b>HOSPITAL/ MATERNITY</b>	<b>SCHOOLS</b>	<b>COMMUNITY HALLS</b>	<b>WATER PROJECTS</b>	<b>OTHERS</b>	<b>TOTAL</b>
Aguata	20,000,000.00	33,000,000.00	3,180,000.00	<b>12,000,000.00</b>	7,800,000.00	4,500,000.00	<b>80,480,000.00</b>
Anambra East							<b>0.00</b>
Anambra West	89,386,500.00	12,437,943.00	9,650,000.00	<b>19,307,570.00</b>	8,579,630.00	45,262,000.00	<b>184,623,643.00</b>
Anaocha							<b>0.00</b>
Awka North	7,745,000.00		4,600,000.00				<b>12,345,000.00</b>
Awka South	450,000.00		525,000.00	<b>3,000,000.00</b>		250,000.00	<b>4,225,000.00</b>
Ayamelum	72,942,000.00	21,416,706.00	9,055,000.00	<b>18,090,000.00</b>		30,854,000.00	<b>152,357,706.00</b>
Dunukofia							<b>0.00</b>
Ekwusigo							<b>0.00</b>
Idemili North	71,952,257.08	6,000,000.00	13,985,070.00		3,400,000.00		<b>95,337,327.08</b>
Idemili South							<b>0.00</b>
Ihiala						1,100,000.00	<b>1,100,000.00</b>
Njikoka							<b>0.00</b>
Nnewi North	314,825,747.87	18,819,000.00			8,144,200.00	501,123,011.00	<b>842,911,958.87</b>
Nnewi South							<b>0.00</b>
Ogbaru	15,524,000.00	4,225,000.00	3,475,000.00	<b>14,342,000.00</b>	1,764,700.00	2,477,000.00	<b>41,807,700.00</b>
Onitsha North							<b>0.00</b>
Onitsha South							<b>0.00</b>
Orumba North	22,444,500.00	11,258,125.00	21,787,850.00	<b>21,045,000.00</b>	4,665,000.00	18,195,000.00	<b>99,395,475.00</b>
Orumba South							<b>0.00</b>
Oyi	11,500,000.00	8,499,846.00	14,756,261.00			37,063,107.00	<b>71,819,214.00</b>
<b>ANAMBRA STATE</b>	<b>626,770,004.95</b>	<b>115,656,620.00</b>	<b>81,014,181.00</b>	<b>87,784,570.00</b>	<b>34,353,530.00</b>	<b>640,824,118.00</b>	<b>1,586,403,023.95</b>

Source: Ministry of Local Government and chieftaincy Matters, Awka.

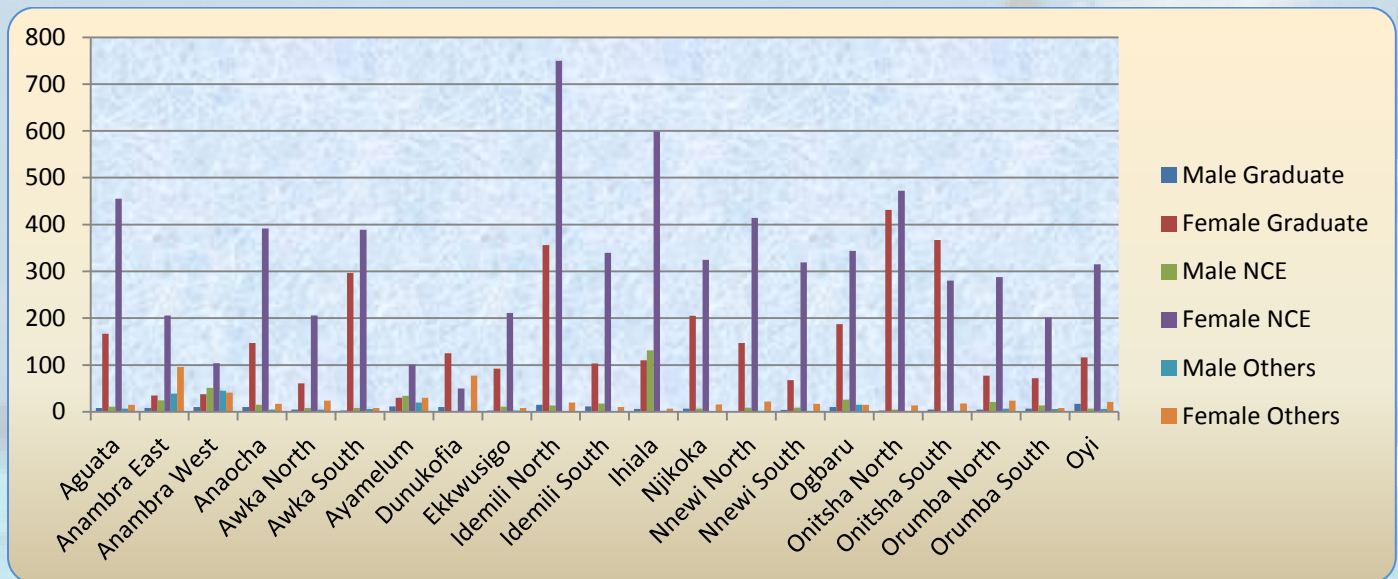
## SECTION VIII

### EDUCATION

This section contains data on Number of schools and classrooms, Primary school Enrolment, Secondary school enrolment, Distribution of teachers in primary school, Number of teaching staff in primary/secondary school by qualification.

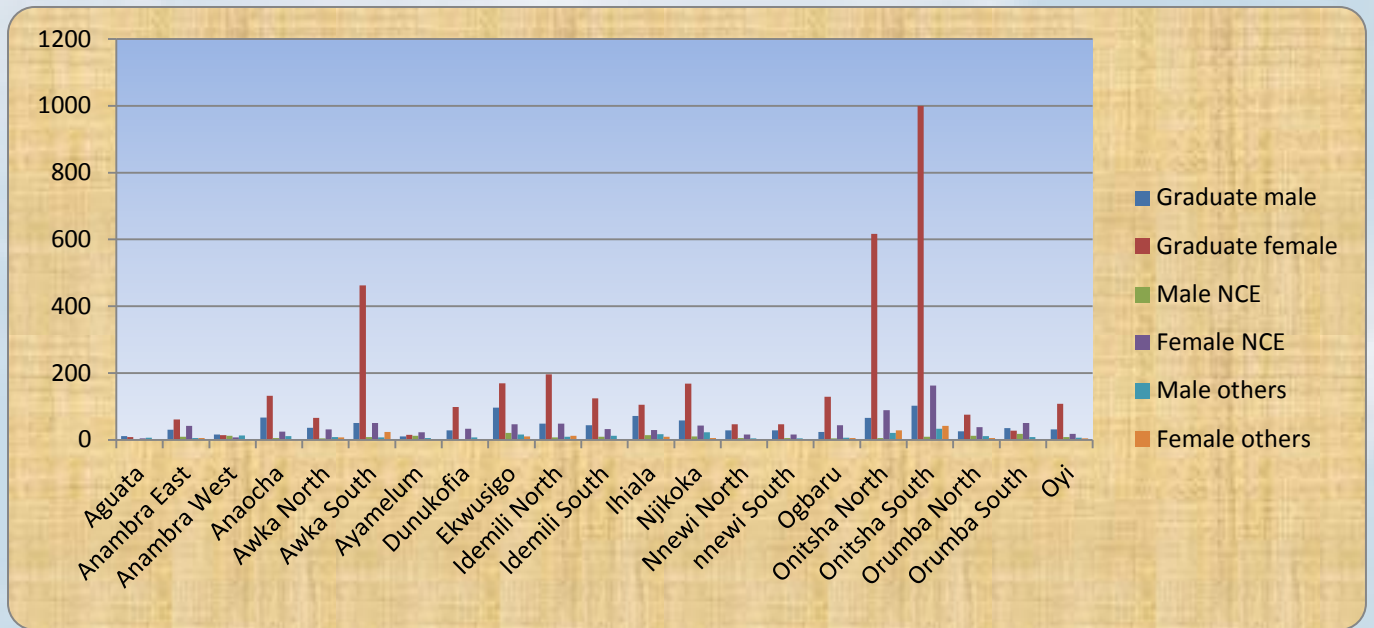
It provides information that gives room for a lot of inferences to be made in the education sector.

Graduate teachers in primary schools represents 30.1%, NCE teachers represents 63.8%, while Others represents 6.1% as a percentage of the total. Out of this, female teachers accounts for 93.2% while their male counterparts is merely 6.8%.



**Figure XIII. NO OF TEACHING STAFF IN PRIMARY EDUCATION BY QUALIFICATION AND SEX.**

Also graduate teachers in secondary schools represent 75.95%, NCE 17.14% and Others 6.72% as a percentage of the total. Female teachers in secondary schools account 78.03% for while their male counterparts represent 21.97%.



**Figure XIV. Number of Teaching Staff in Secondary School by Qualification, 2010**

A total of 28,741 (15,039 females and 13,702 males) students enrolled into JSS1 in 2010 out of which 28,235 (14,987 females and 13,248 males) students attained up to JSSIII which implies 0.8% of the students declined through the years. A total of 21,686 (12,325 females and 9,361 males) enrolled into SSS1 out of which 10,754(5,902 females and 4,852 males) reached SSS111 which implies that 49.6% of the students declined within the years.

**Table 9.1****NUMBER OF SCHOOLS AND CLASSROOMS BY LGA, 2010***(Number)*

LGA	NURSERY		PRIMARY		SEC/TTC		HIGHER INSTITUTION	
	NO OF SCHOOLS	CLASSROOM	NO OF SCHOOLS	CLASSROOM	NO OF SCHOOLS	CLASSROOM	NO OF INSTITUT.	CLASSROOM
Aguata	70	378	74	1,523				
Anambra East	40	42	53	724				
Anambra West	34	95	50	640				
Anaocha	48	210	48	798				
Awka North	34	93	38	607				
Awka South	36	101	42	657				
Ayamelum	47	118	49	449				
Dunukofia	22	64	22	332				
Ekwusigo	37	90	36	1,202				
Idemili North	67	277	70	1,697				
Idemili South	44	129	44	520				
Ihiala	92	140	100	1,127				
Njikoka	38	161	38	622				
Nnewi North	40	152	45	861				
Nnewi South	57	164	61	804				
Ogbaru	46	249	60	931				
Onitsha North	20	83	25	1,080				
Onitsha South	25	65	43	1,299				
Orumba North	51	96	52	949				
Orumba South	37	12	42	605				
Oyi	46	184	46	765				
<b>ANAMBRA STATE</b>	<b>931</b>	<b>2,903</b>	<b>1,038</b>	<b>18,192</b>	<b>0</b>	<b>0</b>	<b>0</b>	<b>0</b>

*Source: Ministry of Education, Awka.*



**Table 9.2****PRIMARY SCHOOLS ENROLMENT BY CLASSES, SEX AND LGA, 2010**

LGA	PRIMARY I			PRIMARY II			PRIMARY III		
	FEMALE	MALE PLUS FEMALE	NO OF CLASSES	FEMALE	MALE PLUS FEMALE	NO OF CLASSES	FEMALE	MALE PLUS FEMALE	NO OF CLASSES
Aguata	5,179	10,848	271	5,098	9,926	248	5,146	9,978	149
Anambra East	2,203	4,622	115	2,330	4,696	117	2,267	4,834	121
Anambra West	2,072	4,240	106	2,024	4,120	103	2,053	4,222	106
Anaocha	2,598	5,323	133	2,623	5,280	132	2,575	5,204	130
Awka North	2,021	4,053	101	2,021	4,181	104	2,060	4,124	103
Awka South	2,233	4,413	110	2,191	4,376	109	2,187	4,366	109
Ayamelum	1,489	2,999	75	1,463	2,928	73	1,475	2,964	74
Dunukofia	1,100	2,217	55	1,106	2,218	55	1,108	2,214	55
Ekwusigo	1,581	3,247	81	1,596	3,317	83	1,581	3,251	81
Idemili North	5,725	11,313	283	5,656	10,983	275	5,698	11,185	279
Idemili South	1,740	3,476	87	1,600	3,332	83	1,692	3,374	84
Ihiala	3,708	7,513	188	3,705	7,414	185	3,769	7,550	189
Njikoka	2,107	4,214	105	2,009	4,021	100	2,065	4,195	105
Nnewi North	2,703	5,219	209	2,603	4,949	124	2,719	5,189	130
Nnewi South	2,693	5,380	135	2,693	5,378	134	2,697	5,359	134
Ogbaru	3,286	6,403	160	3,316	6,341	158	3,255	5,284	132
Onitsha North	3,745	7,203	180	3,635	7,100	178	3,676	7,165	179
Onitsha South	4,427	8,663	216	4,422	8,597	215	4,391	8,589	215
Orumba North	3,279	6,338	158	3,235	6,254	156	3,189	6,290	157
Orumba South	2,000	4,000	100	2,011	4,038	101	2,017	4,071	102
Oyi	2,556	5,090	127	2,500	4,549	114	2,580	4,967	124
<b>ANAMBRA STATE</b>	<b>58,445</b>	<b>116,774</b>	<b>2,995</b>	<b>57,837</b>	<b>113,998</b>	<b>2,847</b>	<b>58,200</b>	<b>114,375</b>	<b>2,758</b>

Source: Ministry of Education, Awka.

Table 9.3

**PRIMARY SCHOOLS ENROLMENT BY CLASSES, SEX AND LGA, 2010 (cont'd)***(Enrolment in '000)*

PRIMARY IV			PRIMARY V			PRIMARY VI			NO OF SCHOOLS
FEMALE	MALE PLUS FEMALE	NO OF CLASSES	FEMALE	MALE PLUS FEMALE	NO OF CLASSES	FEMALE	MALE PLUS FEMALE	NO OF CLASSES	
4,709	9,537	238	5,048	10,510	263	5,776	14,175	354	74
2,275	4,663	116	2,488	4,768	119	3,145	5,432	136	53
2,164	4,268	107	2,102	4,353	109	2,122	4,348	109	50
2,639	5,200	130	2,611	5,400	135	2,644	5,538	138	48
2,025	4,152	104	2,025	4,050	101	1,978	3,768	94	38
2,095	4,279	107	2,150	4,242	106	2,258	4,641	116	42
1,508	2,959	75	1,488	3,059	76	1,515	3,098	77	49
1,098	2,217	55	1,103	2,222	56	1,103	2,235	56	22
1,544	3,208	802	1,595	3,037	76	1,585	3,167	79	36
5,749	11,421	286	5,780	11,371	284	5,743	11,606	290	70
1,784	3,519	88	1,695	3,490	87	1,936	3,676	91	44
3,682	7,484	187	3,751	7,625	191	3,633	7,493	187	100
2,070	4,190	104	2,038	4,150	103	2,100	4,202	105	38
2,691	5,280	132	2,711	5,258	131	2,794	5,423	135	45
2,671	5,346	134	2,679	5,330	133	2,728	5,493	137	61
3,245	6,430	160	3,245	6,430	160	3,245	6,434	161	60
3,763	7,248	181	3,833	7,260	181	3,821	7,447	181	25
4,433	8,689	217	4,400	8,617	215	4,490	8,829	221	43
3,271	6,175	154	3,255	6,335	158	3,450	6,642	166	52
2,035	4,054	101	2,025	4,058	101	1,979	4,013	100	42
2,525	4,924	123	2,576	5,051	126	2,660	6,025	151	46
<b>57,976</b>	<b>115,243</b>	<b>3,601</b>	<b>58,598</b>	<b>116,616</b>	<b>2,911</b>	<b>60,705</b>	<b>123,685</b>	<b>3,084</b>	<b>1,038</b>

**Table 9.4**

**SECONDARY SCHOOL ENROLMENT BY CLASSES, SEX AND LGA, 2010**

(Enrolment in '000)

LGA	JUNIOR SECONDARY SCHOOL (JSS)								
	JSS I			JSS II			JSS III		
	FEMALE	MALE PLUS FEMALE	NO OF CLASSES	FEMALE	MALE PLUS FEMALE	NO OF CLASSES	FEMALE	MALE PLUS FEMALE	NO OF CLASSES
Aguata	732	1,403	362	811	1,445	362	789	1,388	362
Anambra East	240	526	70	252	572	70	248	583	70
Anambra West	167	340	43	166	322	43	169	366	43
Anaocha	596	1,169	190	624	1,126	190	576	1,071	190
Awka North	334	612	76	310	544	76	340	640	76
Awka South	1,587	2,684	281	1,563	2,641	281	1,276	2,185	281
Ayamelum	225	439	62	212	451	62	260	518	62
Dunukofia	365	717	97	356	729	97	373	758	97
Ekwusigo	450	745	139	396	635	139	385	613	139
Idemili North	1,104	2,098	265	971	1,686	265	848	1,648	265
Idemili South	528	1,006	189	450	813	189	463	1,792	189
Ihiala	726	1,275	236	685	1,237	236	770	1,355	236
Njikoka	510	1,266	171	526	1,203	171	524	1,178	171
Nnewi North	987	1,827	155	990	1,799	155	955	1,765	155
Nnewi South	301	603	126	280	522	126	285	492	126
Ogbaru	761	1,229	89	524	920	89	491	868	89
Onitsha North	3,489	5,933	539	3,171	5,180	539	4,298	6,648	539
Onitsha South	704	2,204	239	727	2,439	239	650	1,959	239
Orumba North	482	937	302	434	893	302	474	904	302
Orumba South	285	688	200	338	726	200	355	687	200
Oyi	466	1,040	138	492	1,017	138	458	817	138
<b>ANAMBRA STATE</b>	<b>15,039</b>	<b>28,741</b>	<b>3,969</b>	<b>14,278</b>	<b>26,900</b>	<b>3,872</b>	<b>14,987</b>	<b>28,235</b>	<b>3,969</b>

Source: Ministry of Education, Awka.

Table 9.5

**SECONDARY SCHOOL ENROLMENT BY CLASSES, SEX AND LGA, 2010***(Enrolment in '000)*

SENIOR SECONDARY SCHOOL (SSS)									
SSS I			SSS II			SSS III			NO OF SCHOOLS
FEMALE	MALE PLUS FEMALE	NO OF CLASSES	FEMALE	MALE PLUS FEMALE	NO OF CLASSES	FEMALE	MALE PLUS FEMALE	NO OF CLASSES	
671	1,134	362	478	791	362	178	306	362	
126	270	70	98	210	70	94	186	70	
59	143	43	48	98	43	85	206	43	
599	910	190	620	874	190	393	549	190	
228	396	76	153	250	76	49	85	76	
1,175	2,034	281	936	1,507	281	545	865	281	
188	337	62	160	302	62	318	672	62	
276	587	97	253	463	97	141	313	97	
336	462	139	261	367	139	237	335	139	
702	1,204	265	643	970	265	346	542	265	
495	768	189	423	642	189	233	387	189	
582	908	236	424	635	236	399	650	236	
425	974	171	383	756	171	147	368	171	
747	1,323	155	633	1,010	155	343	562	155	
228	446	126	244	459	126	153	293	126	
372	594	89	318	409	89	80	128	89	
3,552	5,633	539	2,667	4,313	539	1,454	2,535	539	
552	1,719	239	469	1,358	239	111	777	239	
325	598	302	283	495	302	184	330	302	
302	550	200	197	333	200	118	192	200	
385	696	138	399	619	138	294	473	138	
<b>12,325</b>	<b>21,686</b>	<b>3,969</b>	<b>10,090</b>	<b>16,861</b>	<b>3,969</b>	<b>5,902</b>	<b>10,754</b>	<b>3,969</b>	<b>0</b>

Table 9.6

## DISTRIBUTION OF TEACHERS IN PRIMARY SCHOOLS BY SEX AND LGA, 2010

Number

LGA	PRIMARY I			PRIMARY II			PRIMARY III		
	MALE	FEMALE	TOTAL	MALE	FEMALE	TOTAL	MALE	FEMALE	TOTAL
Aguata		78	78		106	106		102	102
Anambra East		67	67		62	62		77	77
Anambra West		47	47		46	46	25	30	55
Anaocha		69	69		78	78	4	87	91
Awka North		52	52		48	48		50	50
Awka South		101	101		99	99		108	108
Ayamelum		30	30		28	28		29	29
Dunukofia		39	39		36	36		40	40
Ekwusigo		57	57		56	56		58	58
Idemili North		179	179		168	168	3	177	180
Idemili South		81	81		79	79		79	79
Ihiala		135	135		129	129	21	117	138
Njikoka		88	88		82	82		81	81
Nnewi North		99	99		96	96		89	89
Nnewi South		65	65		68	68		69	69
Ogbaru		86	86		89	89	3	82	85
Onitsha North		138	138		132	132		137	137
Onitsha South		98	98		98	98		99	99
Orumba North		56	56		62	62		65	65
Orumba South		40	40		42	42	3	48	51
Oyi		66	66		76	76	2	75	77
<b>ANAMBRA STATE</b>	0	1671	1671	0	1680	1680	61	1699	1760

Source : Ministry of Education, Awka.

Table 9.7

## DISTRIBUTION OF TEACHERS IN PRIMARY SCHOOLS BY SEX AND LGA, 2010

Number

LGA	PRIMARY IV			PRIMARY V			PRIMARY VI		
	MALE	FEMALE	TOTAL	MALE	FEMALE	TOTAL	MALE	FEMALE	TOTAL
Aguata	8	101	109	8	109	117	10	141	151
Anambra East	19	38	57	22	45	67	31	48	79
Anambra West	17	31	48	28	13	41	36	16	52
Anaocha	7	105	112	9	106	115	10	112	122
Awka North	5	46	51	5	46	51	8	49	57
Awka South	2	129	131	5	128	133	10	129	139
Ayamelum	20	23	43	21	25	46	25	26	51
Dunukofia	1	49	50	5	48	53	8	40	48
Ekwusigo	2	48	50	6	40	46	9	52	61
Idemili North	10	177	187	12	209	221	5	216	221
Idemili South	9	68	77	9	74	83	12	72	84
Ihiala	38	102	140	38	115	153	42	118	160
Njikoka	3	98	101	5	97	102	7	109	116
Nnewi North	3	100	103	7	99	106	2	100	102
Nnewi South	2	64	66	3	67	70	8	69	77
Ogbaru	13	93	106	15	98	113	20	98	118
Onitsha North	4	154	158	5	171	176	1	185	186
Onitsha South	3	114	117	4	125	129	1	131	132
Orumba North	10	69	79	12	66	78	11	71	82
Orumba South	5	48	53	9	50	59	10	54	64
Oyi	7	77	84	12	78	90	9	80	89
<b>ANAMBRA STATE</b>	188	1734	1922	240	1809	2049	275	1916	2191

**Table 9.8****NUMBER OF TEACHING STAFF IN PRIMARY EDUCATION BY QUALIFICATION, SEX AND LGA, 2010***Number*

LGA	GRADUATE		N C E		OTHERS		TOTAL	
	MALE	FEMALE	MALE	FEMALE	MALE	FEMALE	MALE	FEMALE
Aguata	8	167	11	455	7	15	26	637
Anambra East	8	35	25	206	39	96	72	337
Anambra West	10	38	51	104	45	41	106	183
Anaocha	10	147	15	392	5	17	30	556
Awka North	5	61	8	206	5	24	18	291
Awka South	3	297	8	389	6	8	17	694
Ayamelum	12	30	34	101	20	30	66	161
Dunukofia	10	125	2	50	2	77	14	252
Ekwusigo	3	92	11	211	3	8	17	311
Idemili North	15	356	14	750	1	20	30	1,126
Idemili South	12	103	18	340	1	10	31	453
Ihiala	6	110	131	599	2	7	139	716
Njikoka	7	205	7	325	1	16	15	546
Nnewi North	1	147	9	414	2	22	12	583
Nnewi South	4	68	9	319		17	13	404
Ogbaru	10	187	26	344	15	15	51	546
Onitsha North	3	431	5	472	2	14	10	917
Onitsha South	5	367	1	280	2	18	8	665
Orumba North	5	77	21	288	7	24	33	389
Orumba South	7	72	14	202	6	8	27	282
Oyi	17	116	7	315	6	21	30	452
<b>ANAMBRA STATE</b>	<b>161</b>	<b>3,231</b>	<b>427</b>	<b>6,762</b>	<b>177</b>	<b>508</b>	<b>765</b>	<b>10,501</b>

*Source: Ministry of Education, Awka.*

**Table 9.9**

**NUMBER OF TEACHING STAFF IN SECONDARY SCHOOLS  
BY QUALIFICATION, SEX AND LGA, 2010**

*Number*

LGA	GRADUATE		NCE		OTHERS		TOTAL	
	MALE	FEMALE	MALE	FEMALE	MALE	FEMALE	MALE	FEMALE
Aguata	11	8	2	4	6		19	12
Anambra East	30	61	9	42	5	5	44	108
Anambra West	16	14	12	7	13	3	41	24
Anaocha	67	132	5	25	11	3	83	160
Awka North	36	66	4	31	8	7	48	104
Awka South	50	462	8	50	7	24	65	536
Ayamelum	10	15	12	23	5	1	27	39
Dunukofia	28	98	2	33	7	3	37	134
Ekwusigo	96	169	21	47	16	10	133	226
Idemili North	49	196	7	49	9	12	65	257
Idemili South	44	124	9	32	12	3	65	159
Ihiala	72	105	14	29	17	9	103	143
Njikoka	58	168	10	43	23	5	91	216
Nnewi North	28	47	5	16	4	1	37	64
Nnewi South	28	47	5	16	4	1	37	64
Ogbaru	24	129	4	44	6	5	34	178
Onitsha North	66	617	5	89	21	28	92	734
Onitsha South	102	1,000	9	163	33	42	144	1,205
Orumba North	26	75	12	38	11	5	49	118
Orumba South	35	27	18	50	8	1	61	78
Oyi	31	108	8	18	6	4	45	130
<b>ANAMBRA STATE</b>	<b>896</b>	<b>3,668</b>	<b>181</b>	<b>849</b>	<b>232</b>	<b>172</b>	<b>1,320</b>	<b>4,689</b>

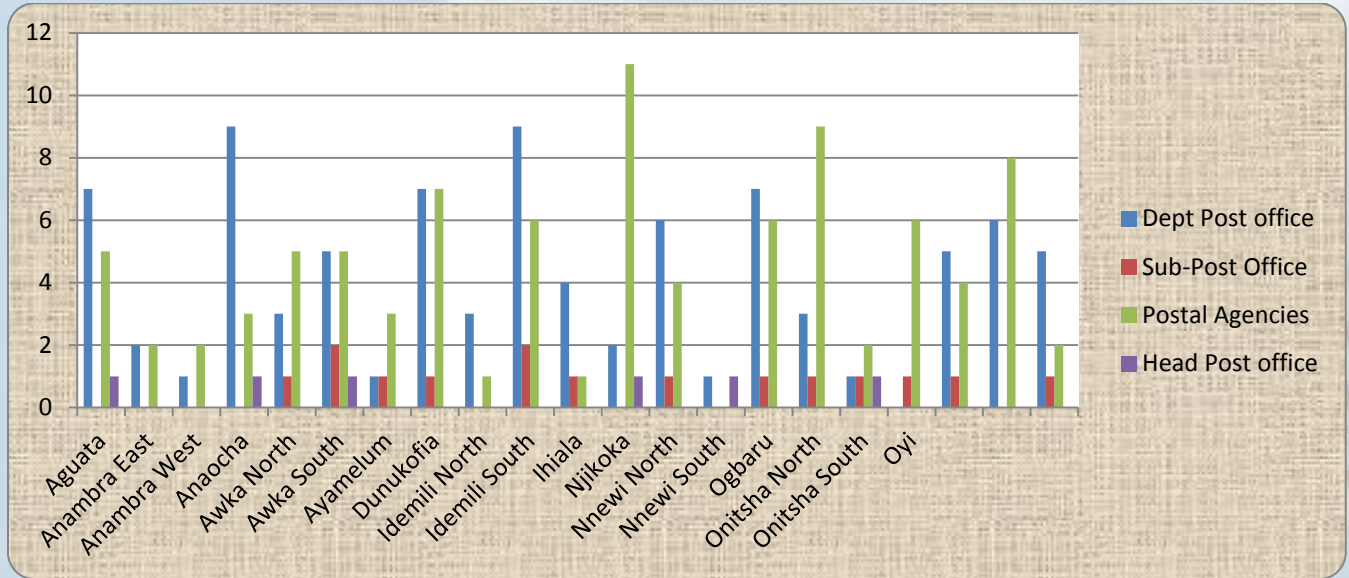
Source: Ministry of Education , Awka.



## SECTION IX

### COMMUNICATION

This section presents data on Postal communication in Anambra state. It takes into cognizance the Post offices and Postal agencies by LGA, the number of postal articles handled by LGA and the revenue received from postal services by LGA, 2010.



**Figure XV. Post Offices and Postal Agencies by LGA, 2010.**

It will be observed that more postal agencies are scattered in the state followed by departmental post office and that the state has few head post offices.

**Table 10.1****POST OFFICES AND POSTAL AGENCIES BY LGA, 2010***(Number)*

LGA	DEPARTMENTAL POST OFFICES	SUB-POST OFFICES	POSTAL AGENCIES	HEAD POST OFFICE
Aguata	7		5	1
Anambra East	2		2	
Anambra West	1		2	
Anaocha	9		3	1
Awka North	3	1	5	
Awka South	5	2	5	1
Ayamelum	1	1	3	
Dunukofia	7	1	7	
Ekwusigo	3		1	
Idemili North	9	2	6	
Idemili South	4	1	1	
Ihiala	2		11	1
Njikoka	6	1	4	
Nnewi North	1			1
Nnewi South	7	1	6	
Ogbaru	3	1	9	
Onitsha North	1	1	2	1
Onitsha South		1	6	
Orumba North	5	1	4	
Orumba South	6		8	
Oyi	5	1	2	
<b>ANAMBRA STATE</b>	<b>87</b>	<b>15</b>	<b>92</b>	<b>6</b>

Source: Nigerian Postal Agency, Awka.

**Table 10.2****NUMBER OF POSTAL ARTICLES HANDLED BY LGA, 2010**

<b>LGA</b>	<b>NUMBER OF ARTICLES POSTED IN NIGERIA (i)</b>	<b>NUMBER OF ARTICLES DESPATCHED ABROAD (ii)</b>	<b>NUMBER OF ARTICLES RECEIVED FROM ABROAD (iii)</b>	<b>NUMBER OF POSTAL ARTICLES HANDLED (i) + (iii)</b>
Aguata	5,772	1,064	884	6,656
Anambra East				0
Anambra West				0
Anaocha	2,563	235	1,132	3,695
Awka North	106	38	129	235
Awka South	38,253	4,769	72,263	110,516
Ayamelum	87		29	116
Dunukofia	1,142	51	339	1,481
Ekwusigo	455	50	308	763
Idemili North	2,577	402	4,786	7,363
Idemili South	1,072	160	547	1,619
Ihiala	2,059	491	2,088	4,147
Njikoka	3,768	165	876	4,644
Nnewi North	9,109	1,441	7,302	16,411
Nnewi South	2,668	91	791	3,459
Ogbaru	262	24	200	462
Onitsha North	23,822	12,314	8,124,064	8,147,886
Onitsha South	3,486	305	6,117	9,603
Orumba North	1,752	155	722	2,474
Orumba South	936	121	574	1,510
Oyi	824	74	480	1,304
<b>ANAMBRA STATE</b>	<b>100,713</b>	<b>21,950</b>	<b>8,223,631</b>	<b>8,324,344</b>

Source: Nigeria Postal Services, Awka.

**Table 10.3****REVENUE RECEIVED FROM POSTAL SERVICES BY LGA, 2010***(N'000)*

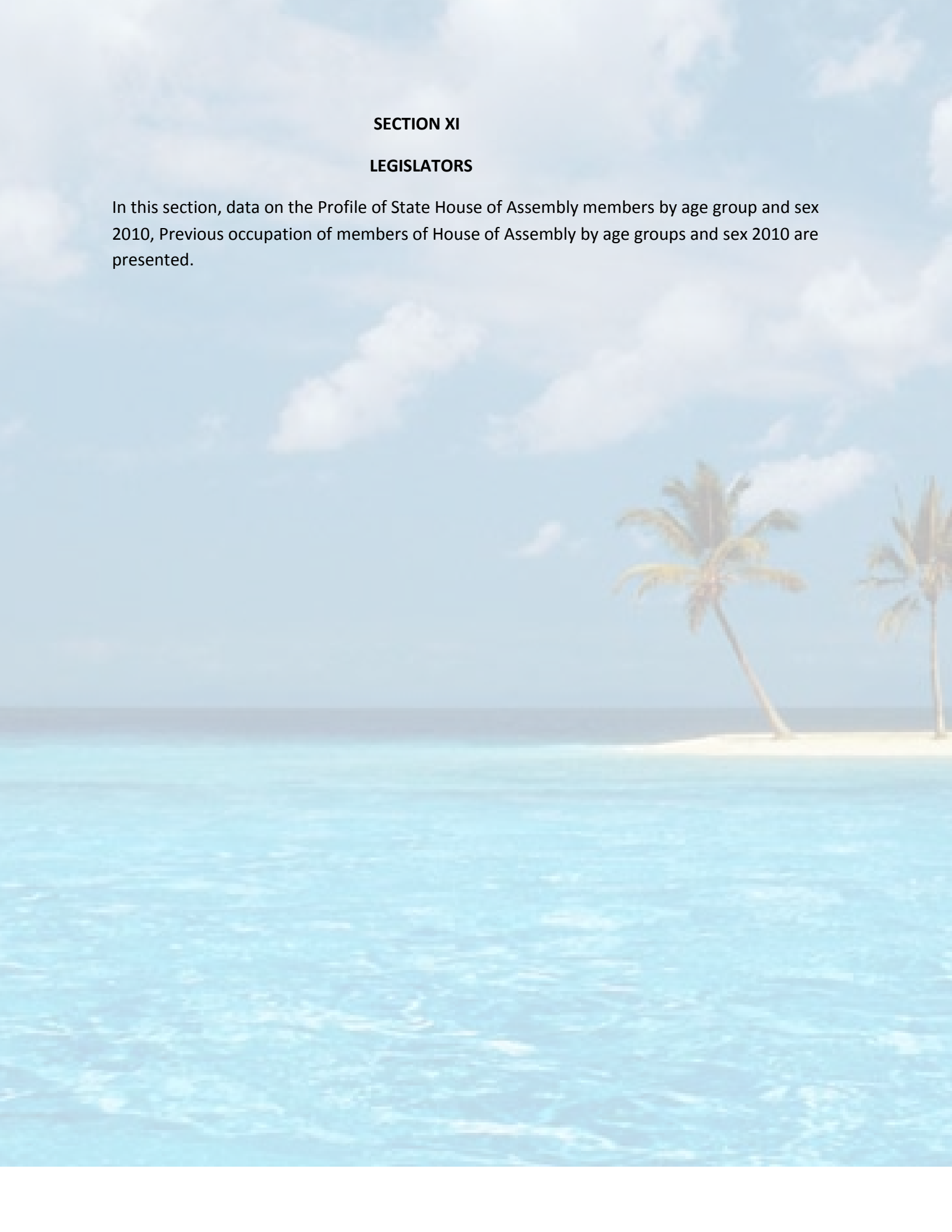
<b>LGA</b>	<b>SALES OF STAMPS AND OTHER REVENUE FROM POSTAL SERVICES</b>	<b>POSTAL CLEARANCE AND DELIVERY FEES</b>	<b>TOTAL REVENUE</b>
Aguata	4340819.5	12,430.00	<b>4,353,249.50</b>
Anambra East			<b>0.00</b>
Anambra West			<b>0.00</b>
Anaocha	3,491,718.80	2,200.00	<b>3,493,918.80</b>
Awka North	219,917.50	1,100.00	<b>221,017.50</b>
Awka South	19,691,882.76	112,995.00	<b>19,804,877.76</b>
Ayamelum	20,580.00		<b>20,580.00</b>
Dunukofia	1,170,005.00	500.00	<b>1,170,505.00</b>
Ekwusigo	1,057,779.50	3,930.00	<b>1,061,709.50</b>
Idemili North	6,408,250.00	23,940.00	<b>6,432,190.00</b>
Idemili South	1,397,334.00	100.00	<b>1,397,434.00</b>
Ihiala	3,158,084.00	8,800.00	<b>3,166,884.00</b>
Njikoka	2,224,090.00	6,800.00	<b>2,230,890.00</b>
Nnewi North	13,924,573.00	46,059.00	<b>13,970,632.00</b>
Nnewi South	1,136,182.00	1,150.00	<b>1,137,332.00</b>
Ogbaru	381,750.00	500.00	<b>382,250.00</b>
Onitsha North	50,194,098.00	355,305.00	<b>50,549,403.00</b>
Onitsha South	3,270,410.00	22,050.00	<b>3,292,460.00</b>
Orumba North	1,277,390.00	1,600.00	<b>1,278,990.00</b>
Orumba South	1,177,990.00		<b>1,177,990.00</b>
Oyi	1,280,680.00	3,000.00	<b>1,283,680.00</b>
<b>ANAMBRA STATE</b>	<b>115,823,534.06</b>	<b>602,459.00</b>	<b>116,425,993.06</b>

Source: Nigeria Postal Services (NIPOST), Awka.

## **SECTION XI**

### **LEGISLATORS**

In this section, data on the Profile of State House of Assembly members by age group and sex 2010, Previous occupation of members of House of Assembly by age groups and sex 2010 are presented.



**Table 11.1**

**PROFILE OF STATE HOUSE OF ASSEMBLY BY AGE GROUP AND SEX, 2010**

*Number*

AGE GROUP	NO OF MEMBERS		HIGHEST EDUCATIONAL QUALIFICATION ATTAINED									
			PRIMARY		SECONDARY		POLY/COLLEGE OF EDUC		UNIVERSITY DEGREE		HIGHER DEGREE	
	MALE	FEMALE	MALE	FEMALE	MALE	FEMALE	MALE	FEMALE	MALE	FEMALE	MALE	FEMALE
18 - 30	0	0										
30 - 40	2	2							2	2		
40 - 50	7	0			2				4		1	
50 - 60	6	0					1		5			
60 - 70	1	0							1			
70 and Above	0	0										
No Age/Qualification Declared	1	1										
No Age Declared with Qualification	8	2					1		5	1	2	1
<b>TOTAL</b>	25	2	0	0	2	0	1	0	12	2	1	0

Source: State House of Assembly, Awka.

**Table 11.2**

**PREVIOUS OCCUPATION OF MEMBERS OF HOUSE OF ASSEMBLY BY AGE GROUP AND SEX, 2010**

*Number*

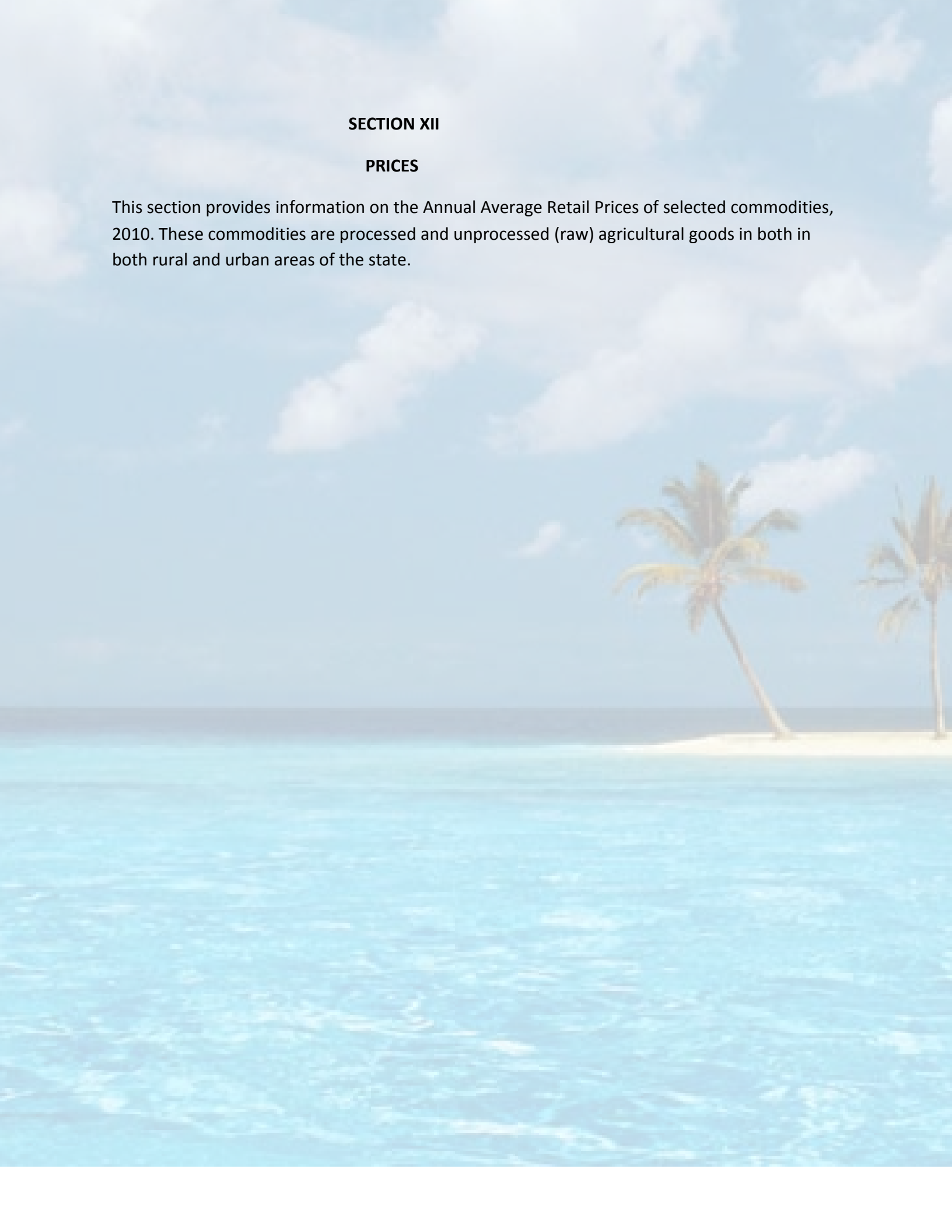
AGE GROUP	SELF EMPLOYED		WAGE EARNER		FAMILY WORKER	
	MALE	FEMALE	MALE	FEMALE	MALE	FEMALE
18 - 30						
30 - 40	2	2			2	
40 - 50	1		3		3	
50 - 60		1	3			
60 - 70					1	
70 and Above						
No Age/Qualification Declared					1	1
No Age Declared with Qualification	2	1	2		4	1
<b>TOTAL</b>	<b>3</b>	<b>3</b>	<b>6</b>	<b>0</b>	<b>6</b>	<b>0</b>

*Source: State House of Assembly.*

## **SECTION XII**

### **PRICES**

This section provides information on the Annual Average Retail Prices of selected commodities, 2010. These commodities are processed and unprocessed (raw) agricultural goods in both in both rural and urban areas of the state.





**Table 12.1****ANNUAL AVERAGE RETAIL PRICES OF SELECTED COMMODITIES, 2010.**

COMMODITY	UNIT OF MEASURE	MONTH												AVERAGE
		JAN	FEB	MAR	APR	MAY	JUN	JUL	AUG	SEP	OCT	NOV	DEC	
BEANS (White)	1 Cig. Cup	25.00	25.00	25.00	25.00	25.00	25.00	30.00	30.00	30.00	25.00	25.00	25.00	26.25
GUINEA CORN (Kaura)	"	15.00	15.00	15.00	15.00	18.00	18.00	15.00	20.00	20.00	20.00	20.00	20.00	17.58
MILLET (Gero)	"	20.00	20.00	20.00	20.00	20.00	20.00	20.00	20.00	20.00	20.00	20.00	20.00	20.00
RICE (Kilaki)	"	25.00	30.00	30.00	30.00	20.00	20.00	35.00	35.00	35.00	30.00	25.00	25.00	28.33
GRAIN (Wheat)	"	30.00	30.00	30.00	25.00	20.00	20.00	25.00	25.00	25.00	25.00	25.00	25.00	25.42
CASSAVA FLOUR	"	17.00	17.00	17.00	17.00	17.00	17.00	17.00	17.00	17.00	17.00	17.00	17.00	17.00
GARI (White)	"	17.00	18.00	20.00	20.00	20.00	20.00	10.00	10.00	10.00	20.00	20.00	20.00	17.08
GARI (Yellow)	"	23.00	23.00	25.00	25.00	25.00	25.00	13.33	13.33	13.33	25.00	25.00	25.00	21.75
GROUNDNUTS (Shelled)	"	55.00	50.00	55.00	50.00	55.00	55.00	50.00	45.00	45.00	50.00	50.00	50.00	50.83
BLUE BAND MARGARINE	"	140.00	140.00	150.00	150.00	150.00	150.00	150.00	150	150.00	150.00	150.00	150.00	148.33
GROUNDNUT OIL	1LT	250.00	230.00	230.00	200.00	200.00	250.00	250.00	250.00	230.00	270.00	280.00	300.00	245.00
PALM OIL	1LT	280.00	250.00	230.00	200.00	200.00	200.00	230.00	230.00	250.00	270.00	280.00	300.00	243.33
HEN'S EGG LOCAL		25.00	25.00	25.00	28.00	30.00	28.00	25.00	30.00	30.00	30.00	25.00	30.00	27.58
PEAK MILK		110.00	110.00	110.00	110.00	110.00	110.00	110.00	110.00	110.00	110.00	110.00	120.00	110.83
NIDO MILK		550.00	570.00	550.00	550.00	530.00	530.00	550.00	550.00	550.00	550.00	550.00	550.00	548.33
OKRO (Dried)	1kg	100.00	100.00	100.00	100.00	100.00	100.00	100.00	100.00	100.00	100.00	100.00	100.00	100.00
SALT	50mg	35.00	35.00	40.00	40.00	40.00	40.00	40.00	40.00	40.00	40.00	35.00	35.00	38.33
SUGAR(ST. LOIUS)		180.00	180.00	180.00	180.00	180.00	180.00	180.00	180.00	180.00	180.00	180.00	180.00	180.00
BOURNVITA	Packet of 450g	550.00	500.00	530.00	550.00	550.00	550.00	530.00	530.00	550.00	550.00	550.00	550.00	540.83
NESCAFE	medium	300.00	300.00	300.00	350.00	350.00	350.00	350.00	350.00	350.00	350.00	350.00	350.00	337.50
COCA COLA	35cl	50.00	50.00	50.00	50.00	50.00	50.00	50.00	50.00	50.00	60.00	50.00	60.00	51.67
BLUE OMO	450g	300.00	350.00	300.00	300.00	350.00	350.00	350.00	350.00	350.00	350.00	350.00	350.00	337.50
BENSON & HEDGES	1 packet	170.00	170.00	170.00	170.00	170.00	170.00	170.00	170.00	170.00	170.00	175.00	170.00	170.42

Source: State Bureau of Statistics.

Source: STATE STATISTICAL AGENCY