



NATIONAL BUREAU OF STATISTICS

Nigeria Electricity Report : Energy Billed, Revenue Generated And Customers By DISCOS

(Q1 2024)

Report Date: June 2024

Data Source: National Bureau of Statistics (NBS)



CONTENT

Methodology 3

Executive Summary4

DISCOS Infographics5

Appendix17

Contact18



METHODOLOGY

Data is provided by the Nigerian Electricity Regulatory Commission (NERC) and verified and validated by the National Bureau of Statistics (NBS)



EXECUTIVE SUMMARY

Total customer numbers in Q1 2024 stood at 12.33 million from 12.12 million in Q4 2023, showing an increase of 1.78%. On a year-on-year basis, customer numbers in Q1 2024 rose by 9.47% from 11.27 million reported in Q1 2023. Similarly, metered customers stood at 5.91 million in Q1 2024, indicating a growth of 5.38% from 5.61 million recorded in the preceding quarter. On a year-on-year basis, this grew by 11.26% from the figure reported in Q1 2023 which was 5.31 million.

In addition, estimated customers during the quarter were 6.43 million, higher by 10.22% from 5.83 million in Q4 2023. On a year-on-year basis, estimated customers increased by 7.88% in Q1 2024 from 5.96 million in Q1 2023. Revenue collected by the DISCOs during the period was N291.62 billion from N294.95 billion in Q4 2023. On a year-on-year basis, revenue generated in the reference period rose by 17.91% from N247.33 billion recorded in Q1 2023.

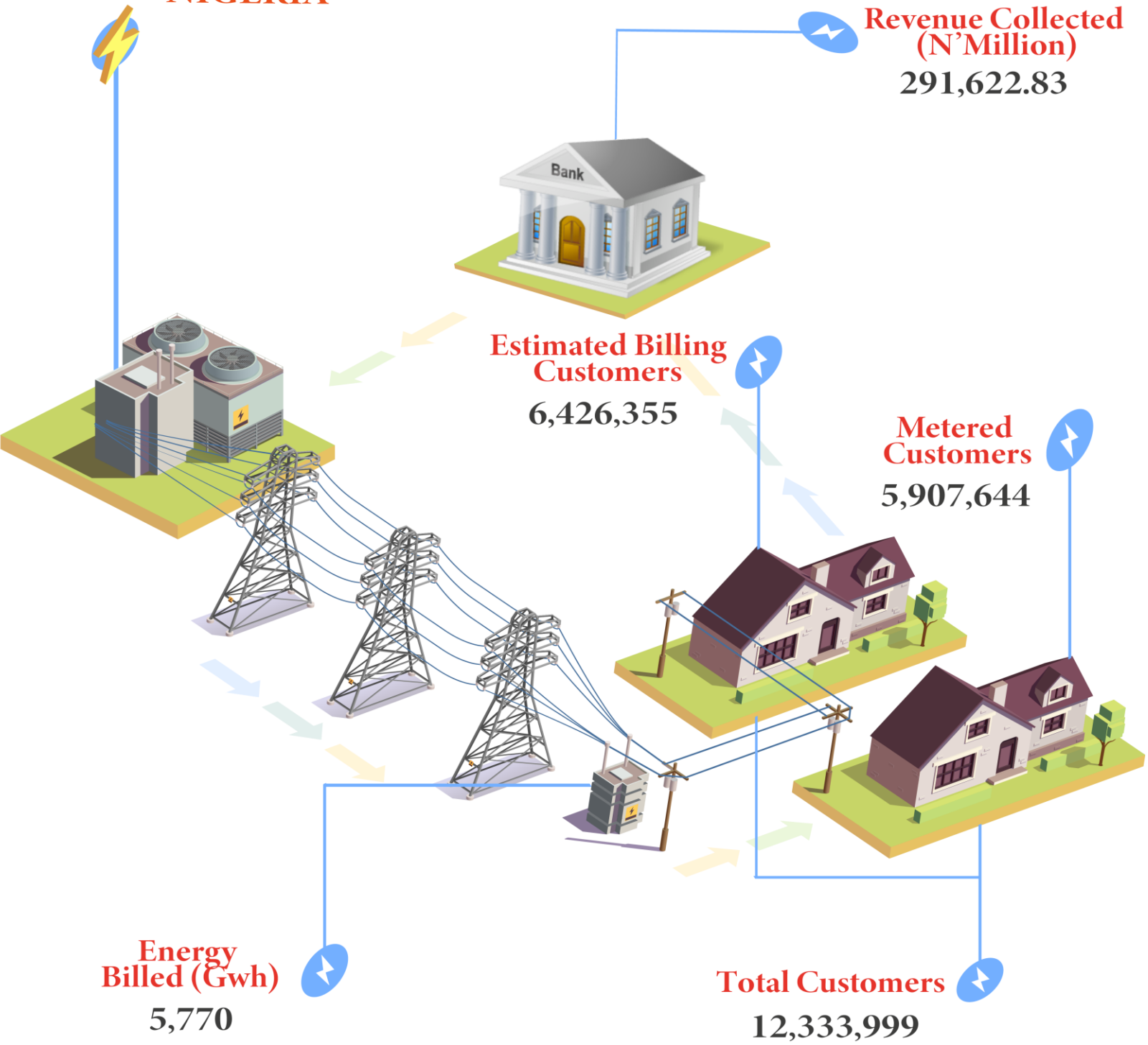
Electricity supply was 5,769.52 (Gwh) in Q1 2024 from 6,432.22 (Gwh) in the previous quarter. However, on a year-on-year basis, electricity supply decreased by 1.41% compared to 5,851.87 (Gwh) reported in Q1 2023.

NIGERIA ELECTRICITY REPORT

– Q1 2024



NIGERIA





ABUJA (AEDC)

**Revenue Collected
(N' Million)**
48,601.00

**Estimated Billing
Customers**
564,727

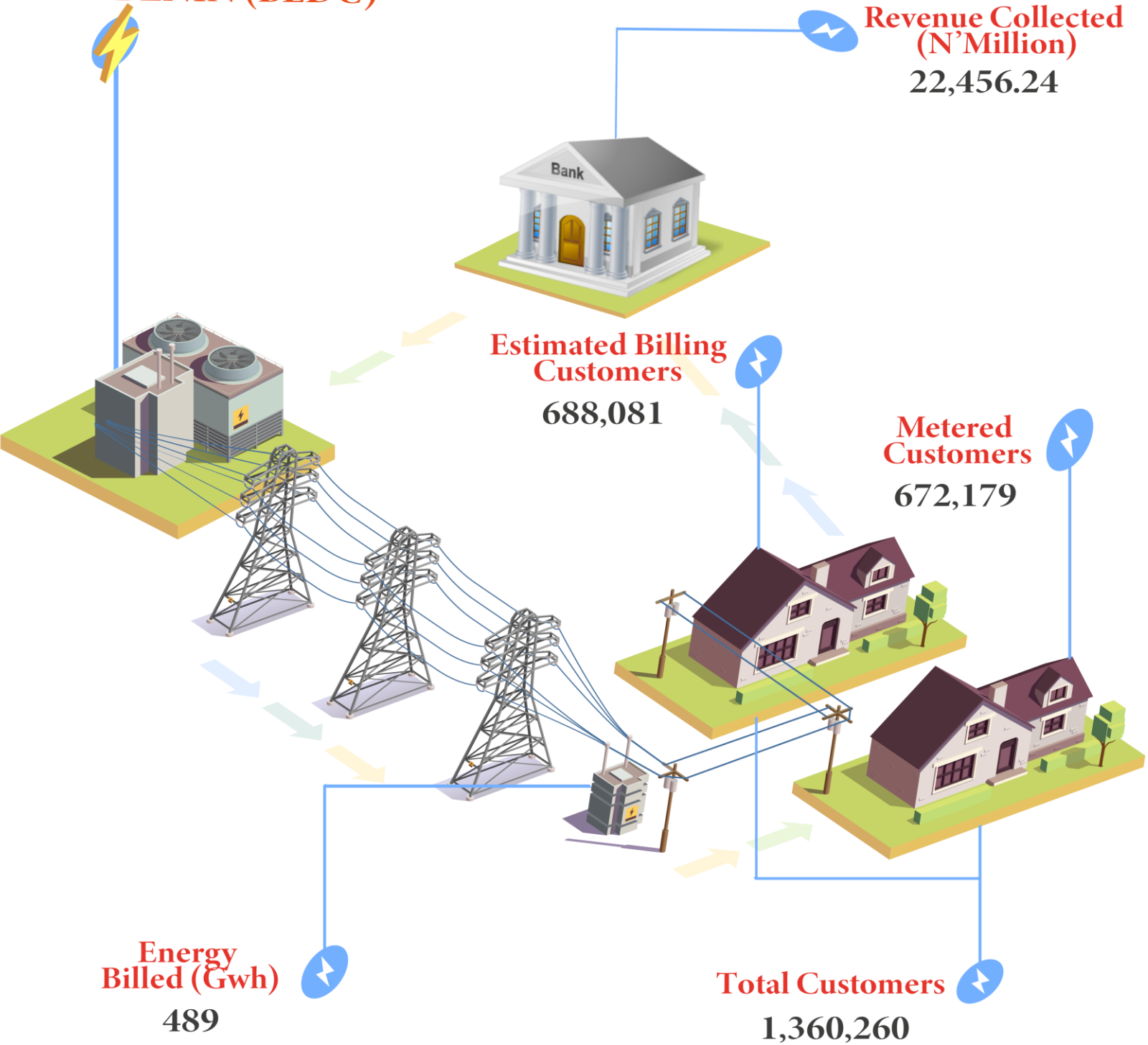
**Metered
Customers**
892,028

**Energy
Billed (Gwh)**
846

Total Customers
1,456,755

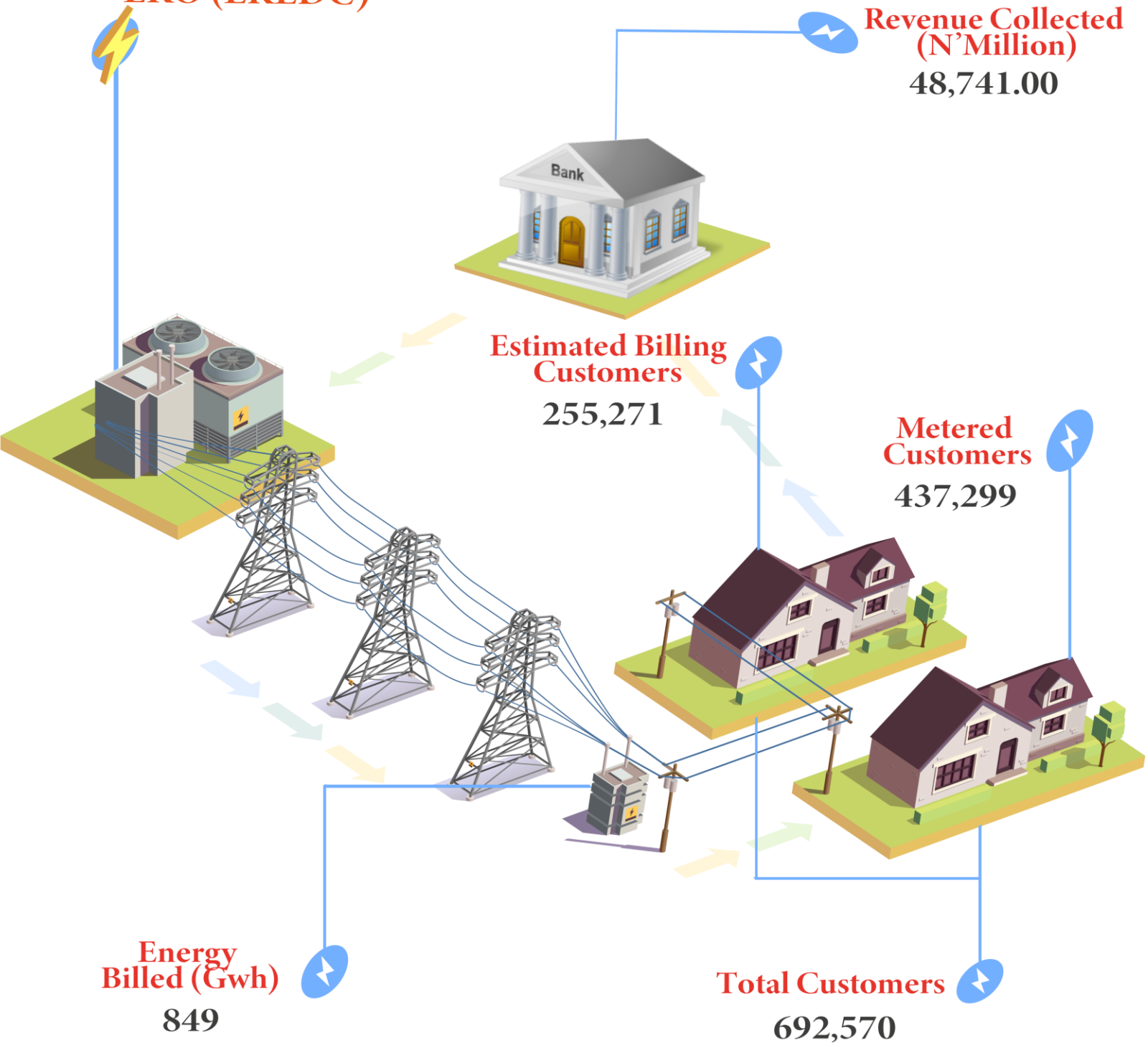


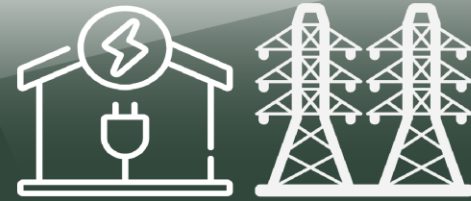
BENIN (BEDC)



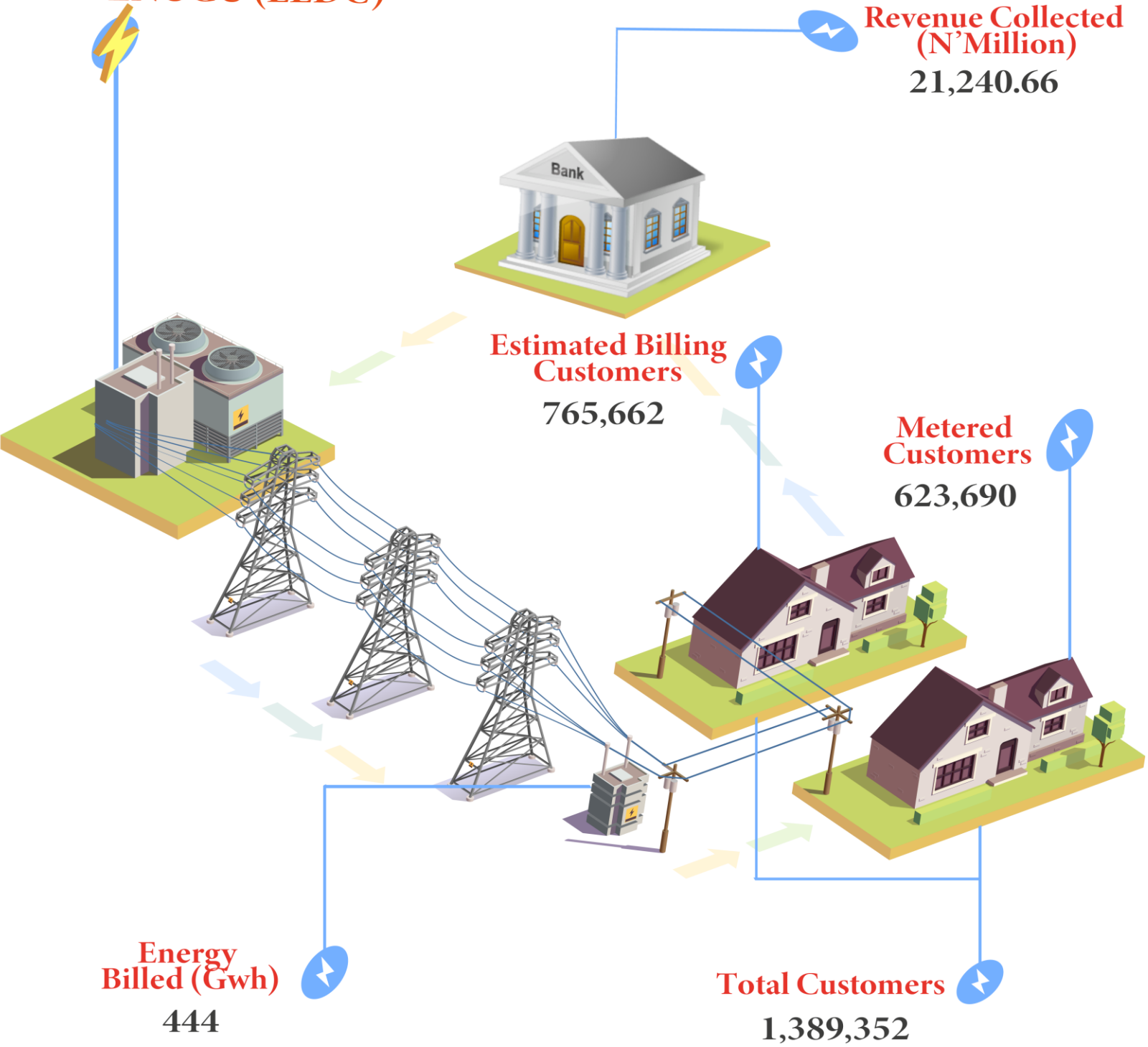


EKO (EKEDC)



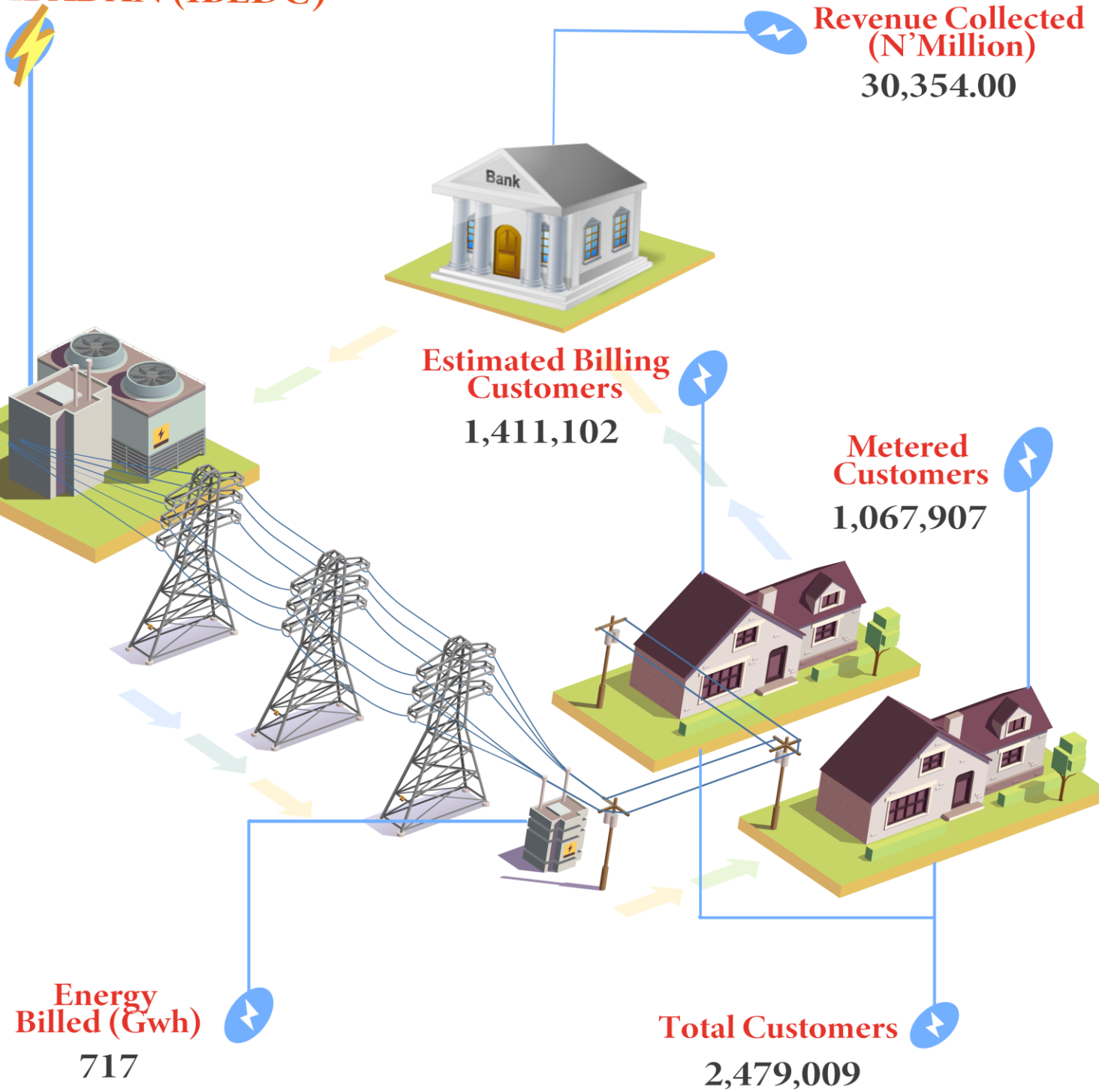


ENUGU (EEDC)





IBADAN (IBEDC)





IKEJA (IEDC)

**Revenue Collected
(N'Million)**

57,875.84

**Estimated Billing
Customers**

219,632

**Metered
Customers**

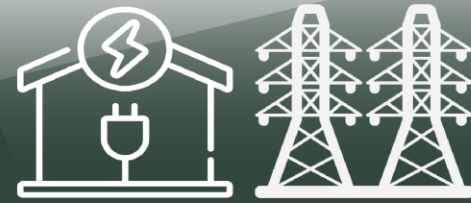
919,451

**Energy
Billed (Gwh)**

908

Total Customers

1,139,083



JOS (JEDC)

**Revenue Collected
(N'Million)**

13,285.77

**Estimated Billing
Customers**

495,449

**Metered
Customers**

248,709

**Energy
Billed (Gwh)**

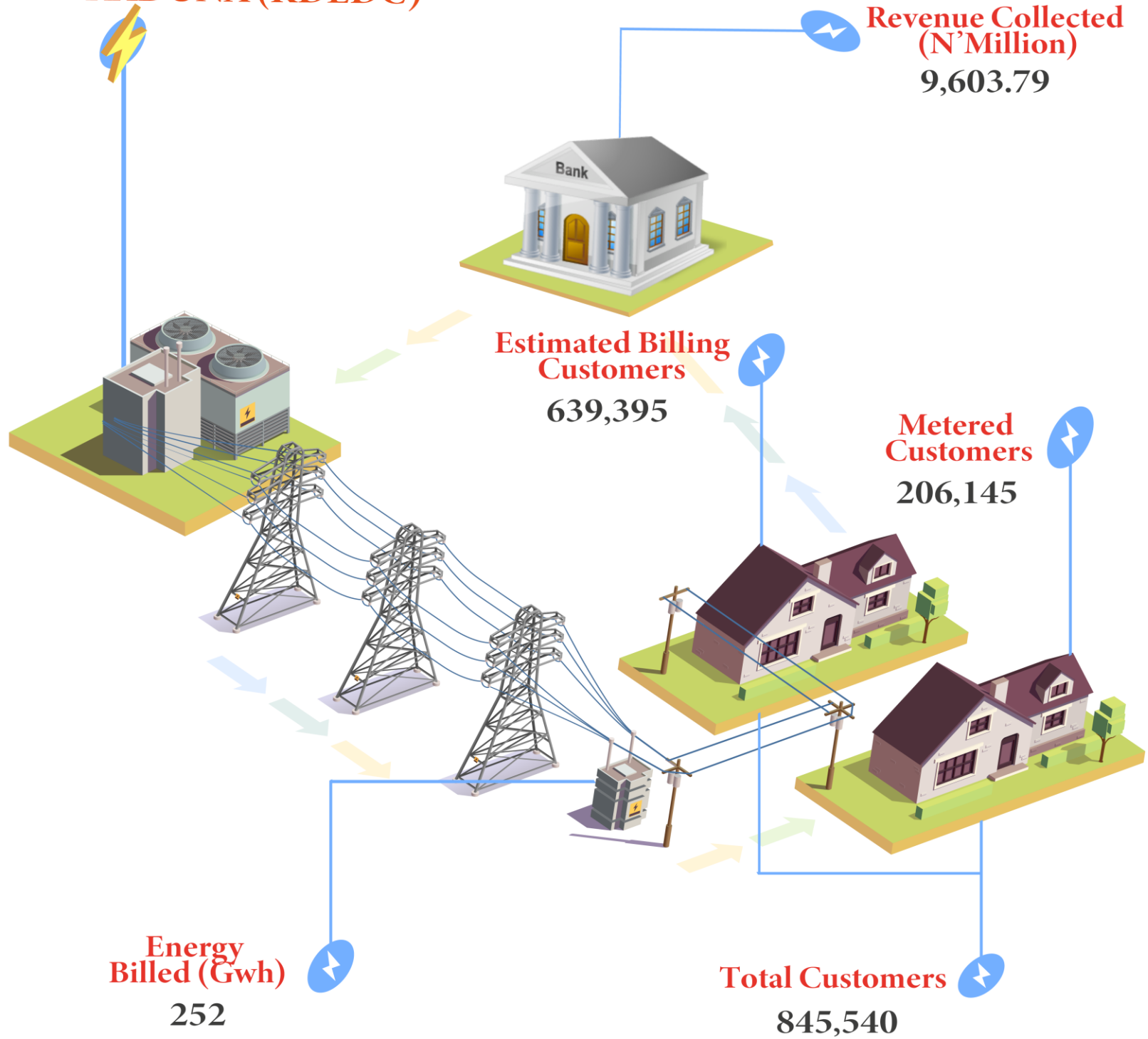
301

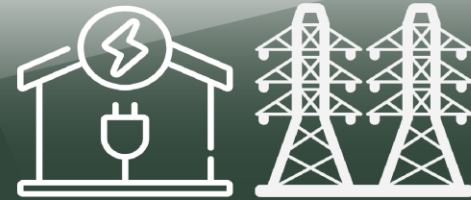
Total Customers

744,158

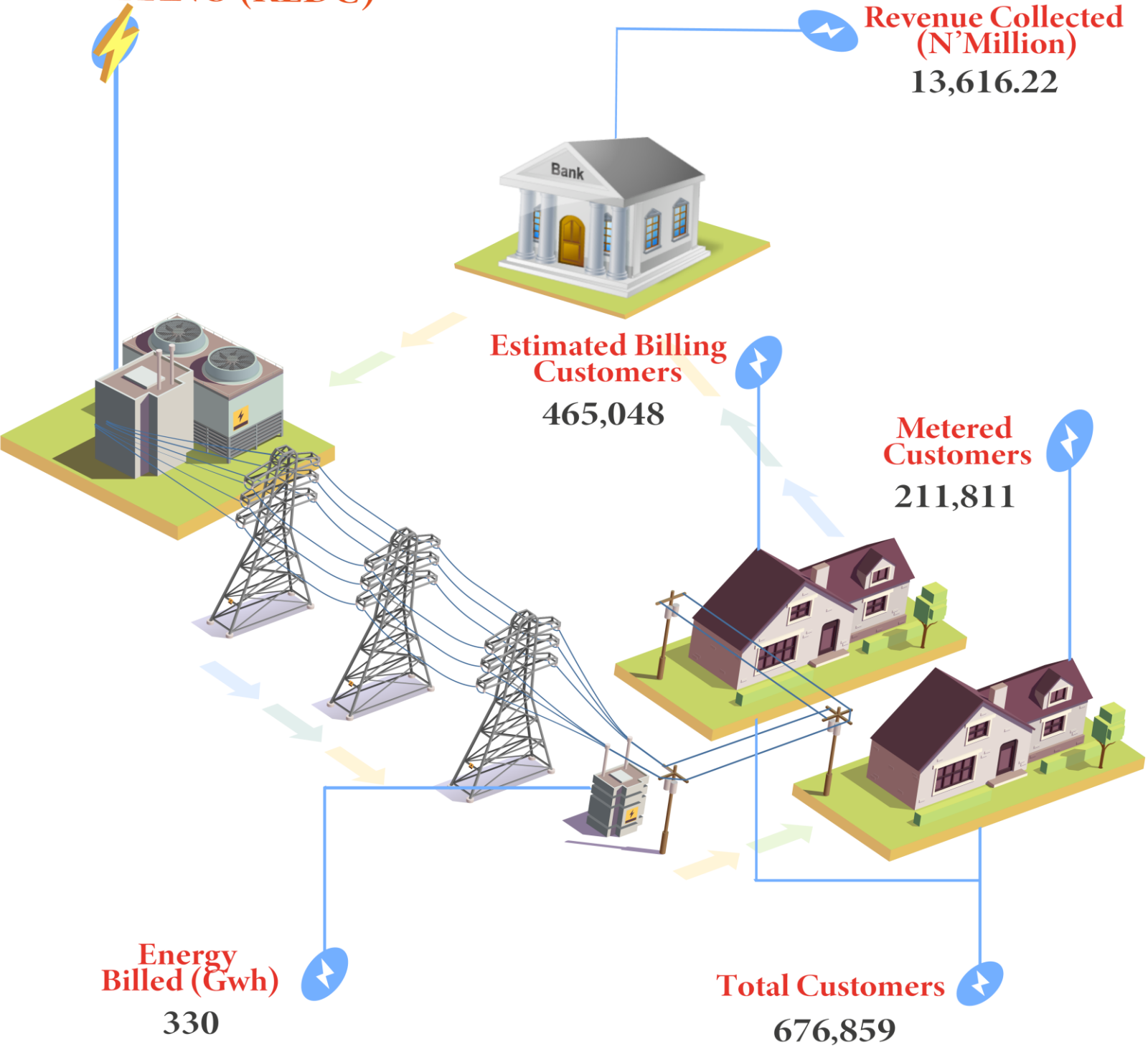


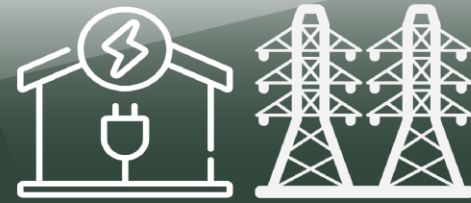
KADUNA (KDEDC)



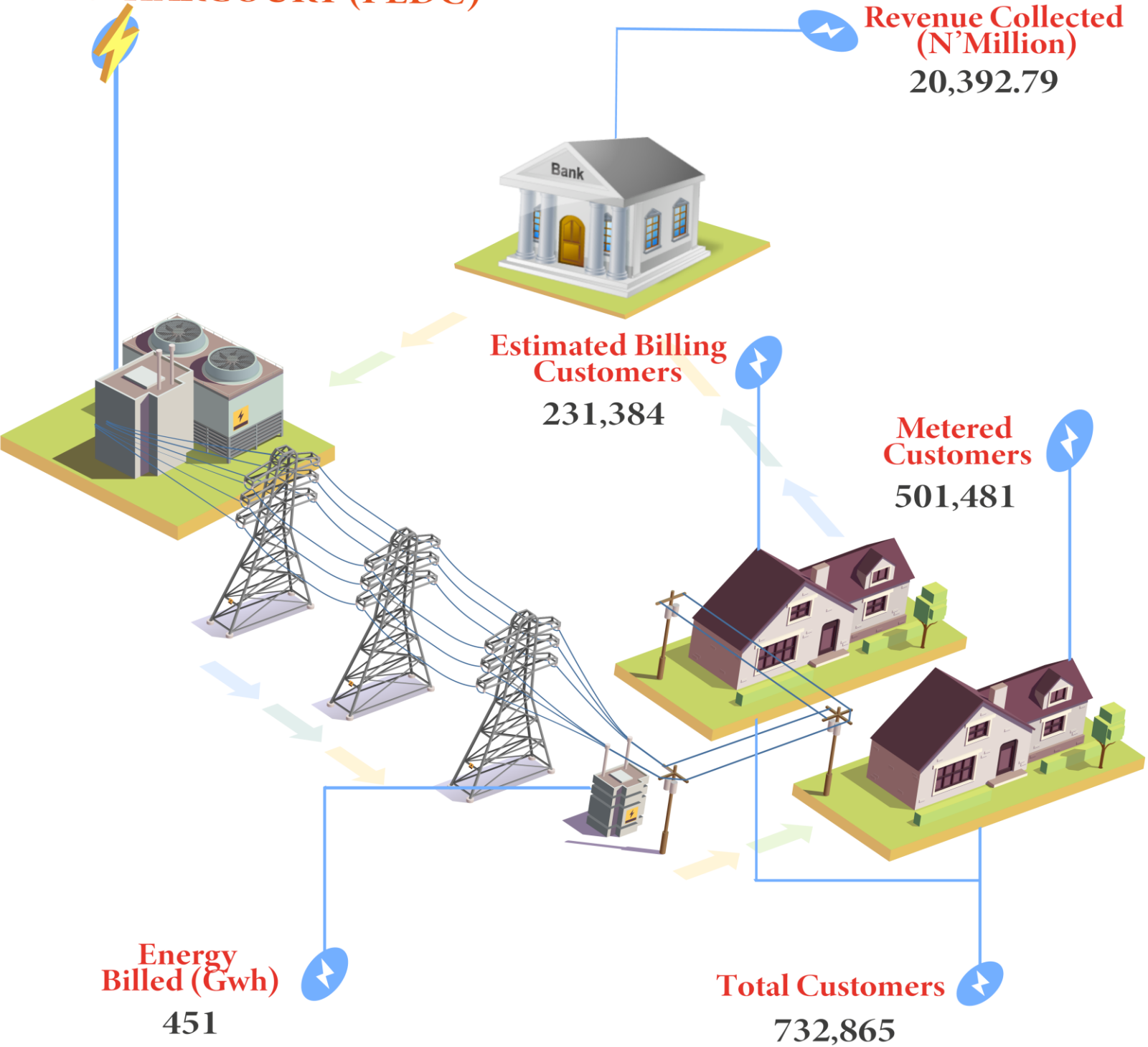


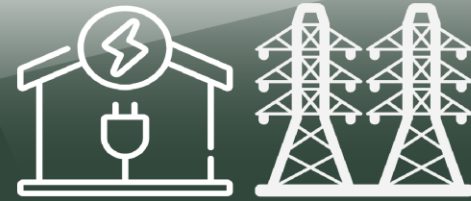
KANO (KEDC)





PORT HARCOURT (PEDC)





YOLA (YEDC)

Revenue Collected (N'Million)
5,455.52

Estimated Billing Customers
690,604

Metered Customers
126,944

Energy Billed (Gwh)
183

Total Customers
817,548

APPENDIX

TOTAL CUSTOMER NUMBER	Q1 2024
DISCOS	12,333,999
ABUJA (AEDC)	1,456,755
BENIN (BEDC)	1,360,260
EKO (EKEDC)	692,570
ENUGU (EEDC)	1,389,352
IBADAN (IBEDC)	2,479,009
IKEJA (IEDC)	1,139,083
JOS (JEDC)	744,158
KADUNA (KDEDC)	845,540
KANO (KEDC)	676,859
PORT HARCOURT (PEDC)	732,865
YOLA (YEDC)	817,548

NUMBER OF METERED CUSTOMERS	Q1 2024
DISCOS	5,907,644
ABUJA (AEDC)	892,028
BENIN (BEDC)	672,179
EKO (EKEDC)	437,299
ENUGU (EEDC)	623,690
IBADAN (IBEDC)	1,067,907
IKEJA (IEDC)	919,451
JOS (JEDC)	248,709
KADUNA (KDEDC)	206,145
KANO (KEDC)	211,811
PORT HARCOURT (PEDC)	501,481
YOLA (YEDC)	126,944

NUMBER OF ESTIMATED CUSTOMERS	Q1 2024
DISCOS	6,426,355
ABUJA (AEDC)	564,727
BENIN (BEDC)	688,081
EKO (EKEDC)	255,271
ENUGU (EEDC)	765,662
IBADAN (IBEDC)	1,411,102
IKEJA (IEDC)	219,632
JOS (JEDC)	495,449
KADUNA (KDEDC)	639,395
KANO (KEDC)	465,048
PORT HARCOURT (PEDC)	231,384
YOLA (YEDC)	690,604

REVENUE COLLECTED (MILLION NAI-RA)	Q1 2024
DISCOS	291,622.83
ABUJA (AEDC)	48,601.00
BENIN (BEDC)	22,456.24
EKO (EKEDC)	48,741.00
ENUGU (EEDC)	21,240.66
IBADAN (IBEDC)	30,354.00
IKEJA (IEDC)	57,875.84
JOS (JEDC)	13,285.77
KADUNA (KDEDC)	9,603.79
KANO (KEDC)	13,616.22
PORT HARCOURT (PEDC)	20,392.79
YOLA (YEDC)	5,455.52

ENERGY BILLED/ELECTRICITY SUPPLY (GWh)	Q1 2024
DISCOS	5,770
ABUJA (AEDC)	846
BENIN (BEDC)	489
EKO (EKEDC)	849
ENUGU (EEDC)	444
IBADAN (IBEDC)	717
IKEJA (IEDC)	908
JOS (JEDC)	301
KADUNA (KDEDC)	252
KANO (KEDC)	330
PORT HARCOURT (PEDC)	451
YOLA (YEDC)	183

ACRONYMS

ABUJA	(AEDC)
BENIN	BEDC
EKO	EKEDC
ENUGU	EEDC
IBADAN	IBEDC
IKEJA	IEDC
JOS	JEDC
KADUNA	KDEDC
KANO	KEDC
PORT HARCOURT	PEDC
YOLA	YEDC

CONTACT



National Bureau of Statistics

Head Office

Plot 762 Independence Avenue,
Central Business District, Garki
Abuja.

Mr. Wakili I.N.D.

Information Desk

Head, Communication & Public
Relations Department (C&PRD)
Phone: +2348059170806
idwakili@nigerianstat.gov.ng

Moses Mathew

Statistical Information Officer

Phone: +2347069071157
matmoses@nigerianstat.gov.ng



@nbs_nigeria



NBSNigeria



nbs_nigeria

