



NATIONAL BUREAU OF STATISTICS

# **Nigeria Electricity Report :** Energy Billed, Revenue Generated And Customers By DISCOS

---

**(Q3 2023)**

**Report Date: January 2024**

**Data Source: National Bureau of Statistics (NBS)**



# CONTENT

Methodology ..... 3

Key Highlights..... 4

DISCOS Infographics .....5

Appendix .....17

Contact .....18



## METHODOLOGY

Data is provided by the Nigerian Electricity Regulatory Commission (NERC) and verified and validated by the National Bureau of Statistics (NBS)

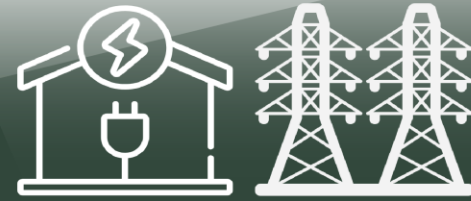


## KEY HIGHLIGHTS

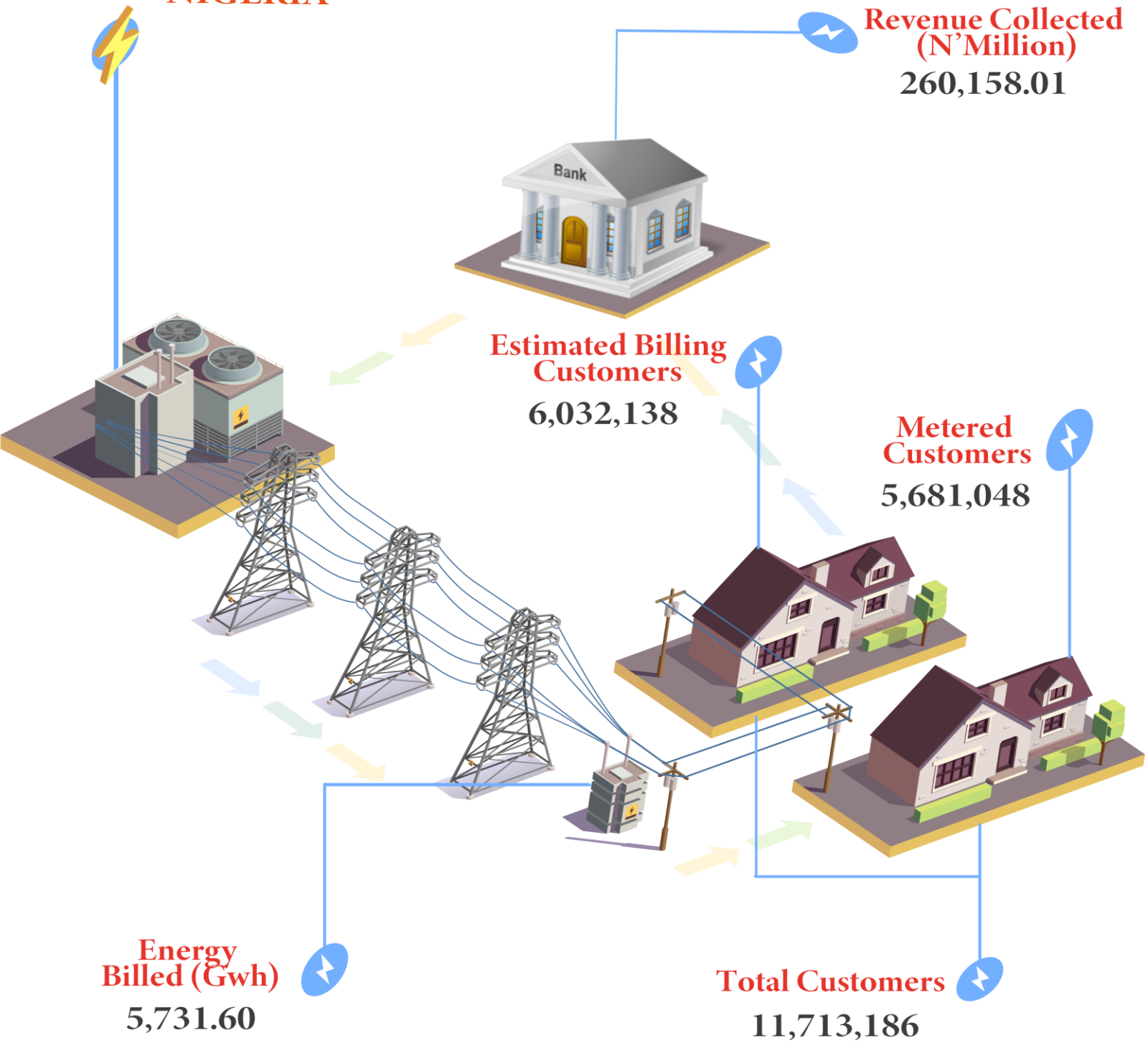
Total customer numbers in Q3 2023 stood at 11.71 million from 11.47 million in Q2 2023, showing an increase of 2.08%. On a year-on-year basis, customer numbers in Q3 2023 rose by 7.09% from 10.94 million reported in Q3 2022. Similarly, metered customers stood at 5.68 million in Q3 2023, indicating a growth of 3.77% from 5.47 million recorded in the preceding quarter. On a year-on-year basis, this grew by 13.07% from the figure reported in Q3 2022 which was 5.02 million.

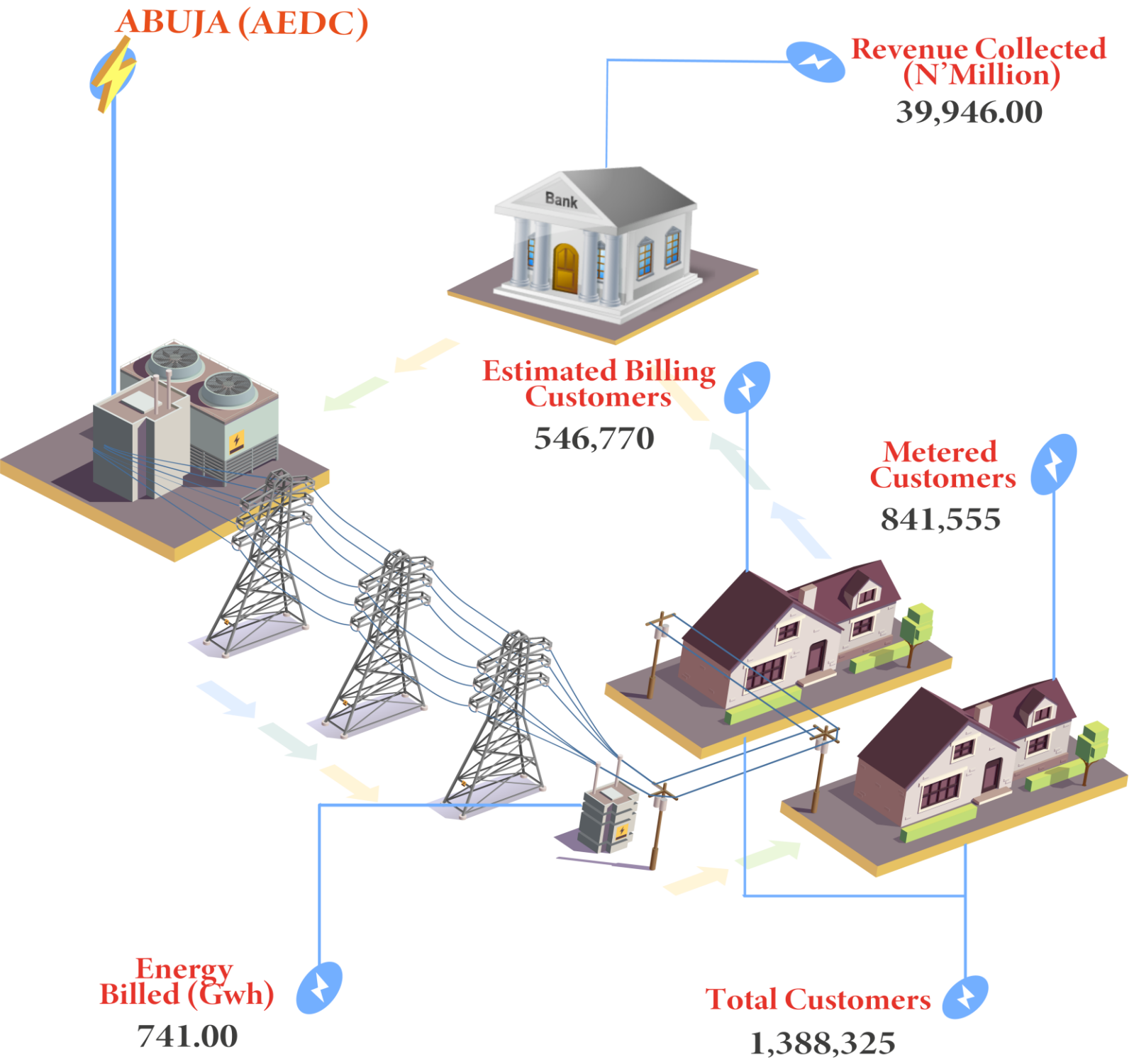
In addition, estimated customers during the quarter were 6.03 million, higher by 0.53% from 6.00 million in Q2 2023. On a year-on-year basis, estimated customers increased by 2.02% in Q3 2023 from 5.91 million in Q3 2022. Revenue collected by the DISCOs during the period was N260.16 billion from N263.08 billion in Q2 2023. On a year-on-year basis, revenue generated in the reference period rose by 28.40% from N202.62 billion recorded in Q3 2022.

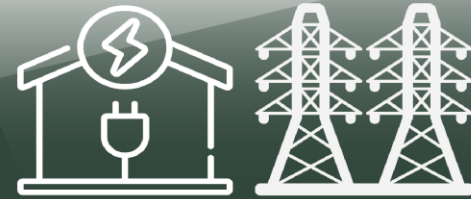
Electricity supply was 5,731.60 (Gwh) in Q3 2023 from 5,909.83 (Gwh) in the previous quarter. However, on a year-on-year basis, electricity supply increased by 14.09% compared to 5,023.96 (Gwh) reported in Q3 2022.



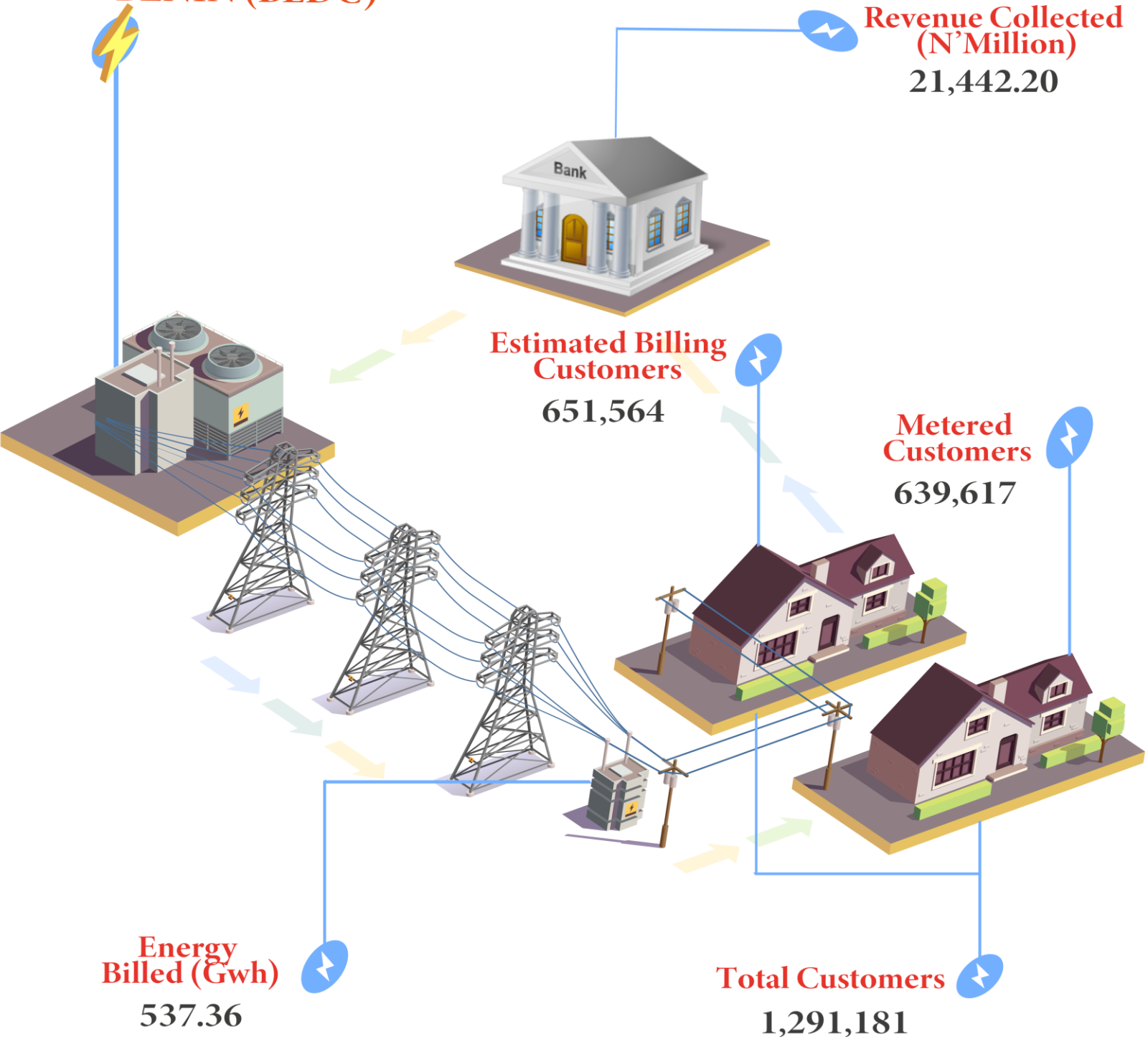
### NIGERIA







### BENIN (BEDC)

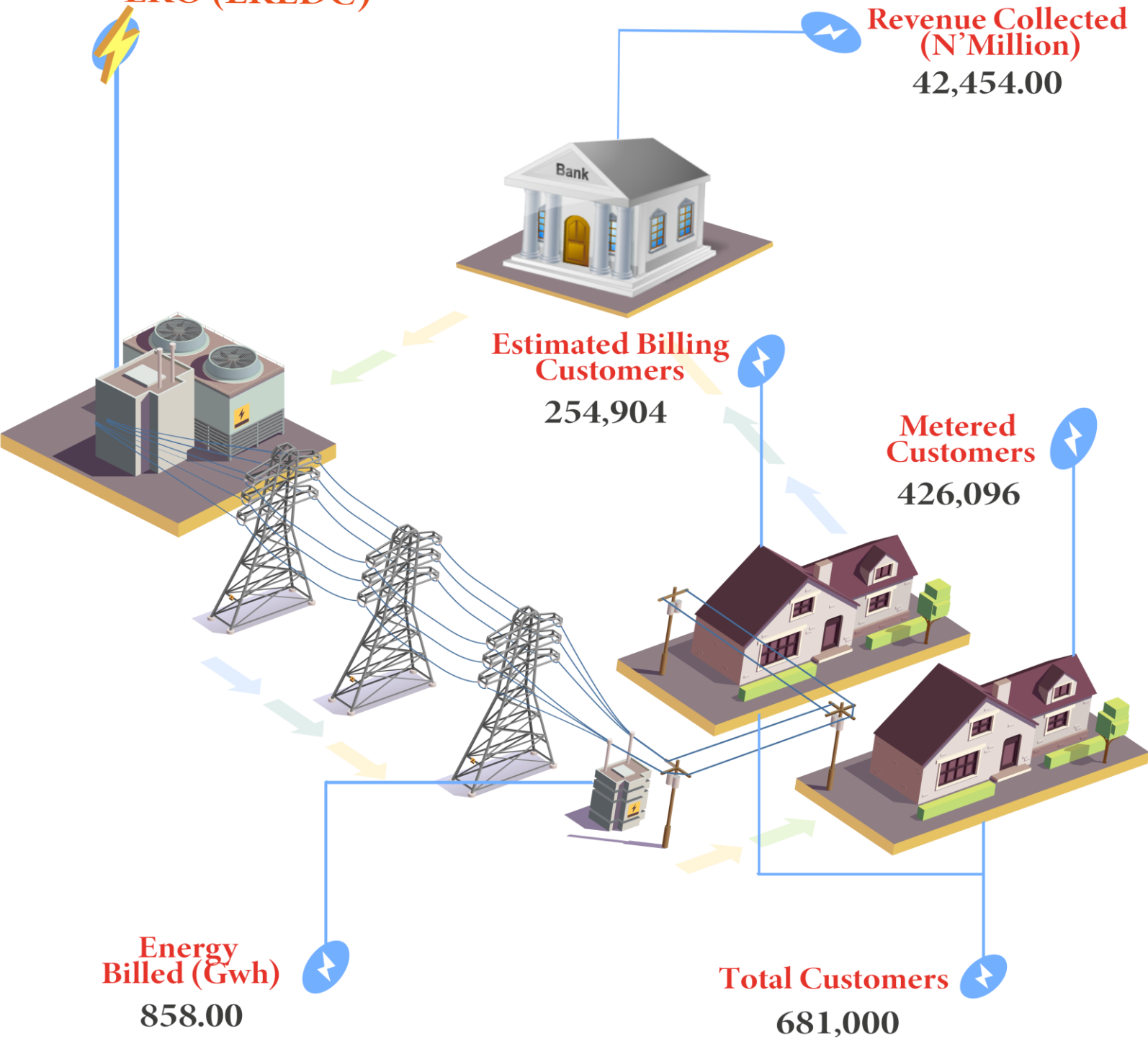


# NIGERIA ELECTRICITY REPORT

– Q3 2023



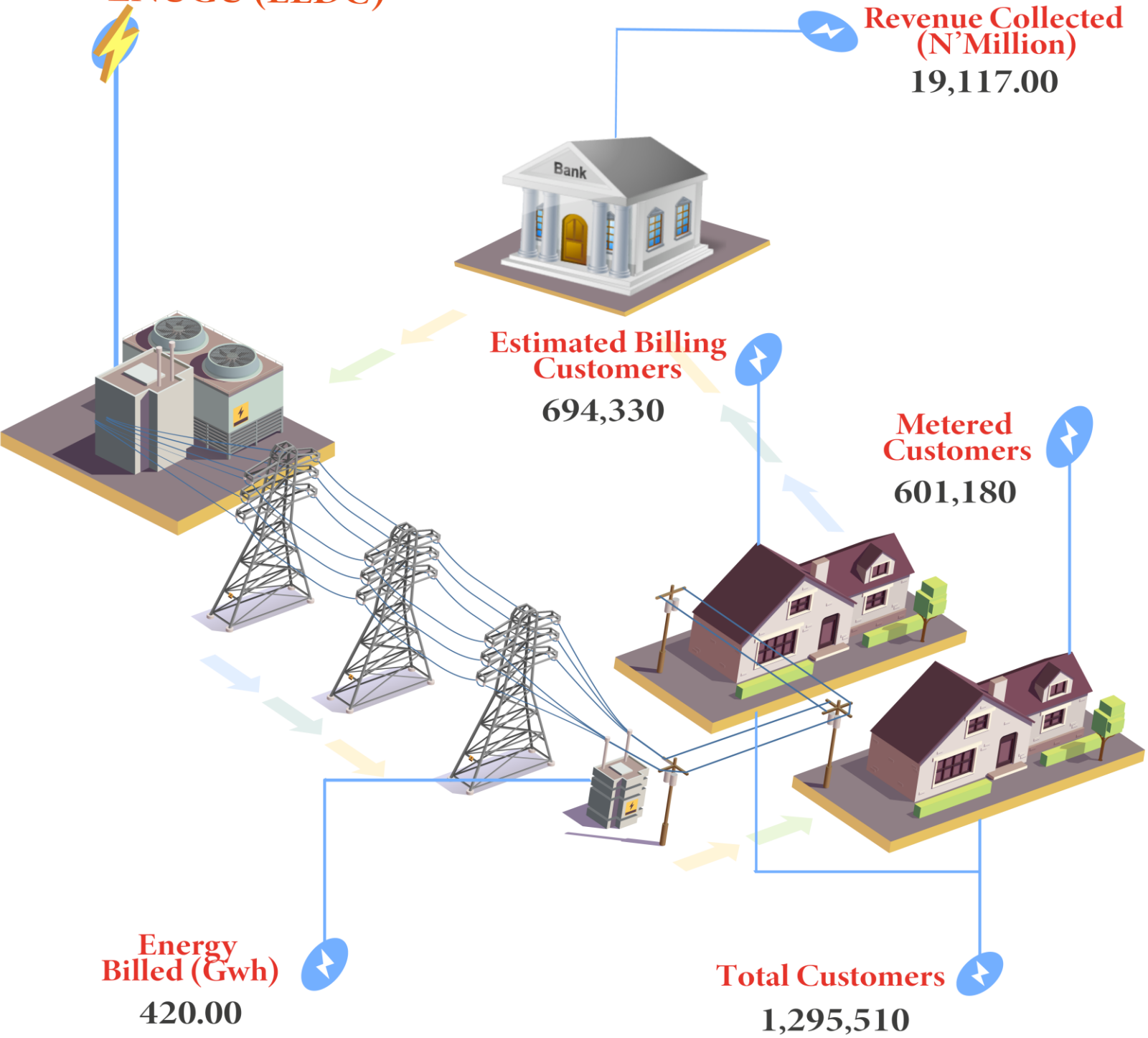
## EKO (EKEDC)





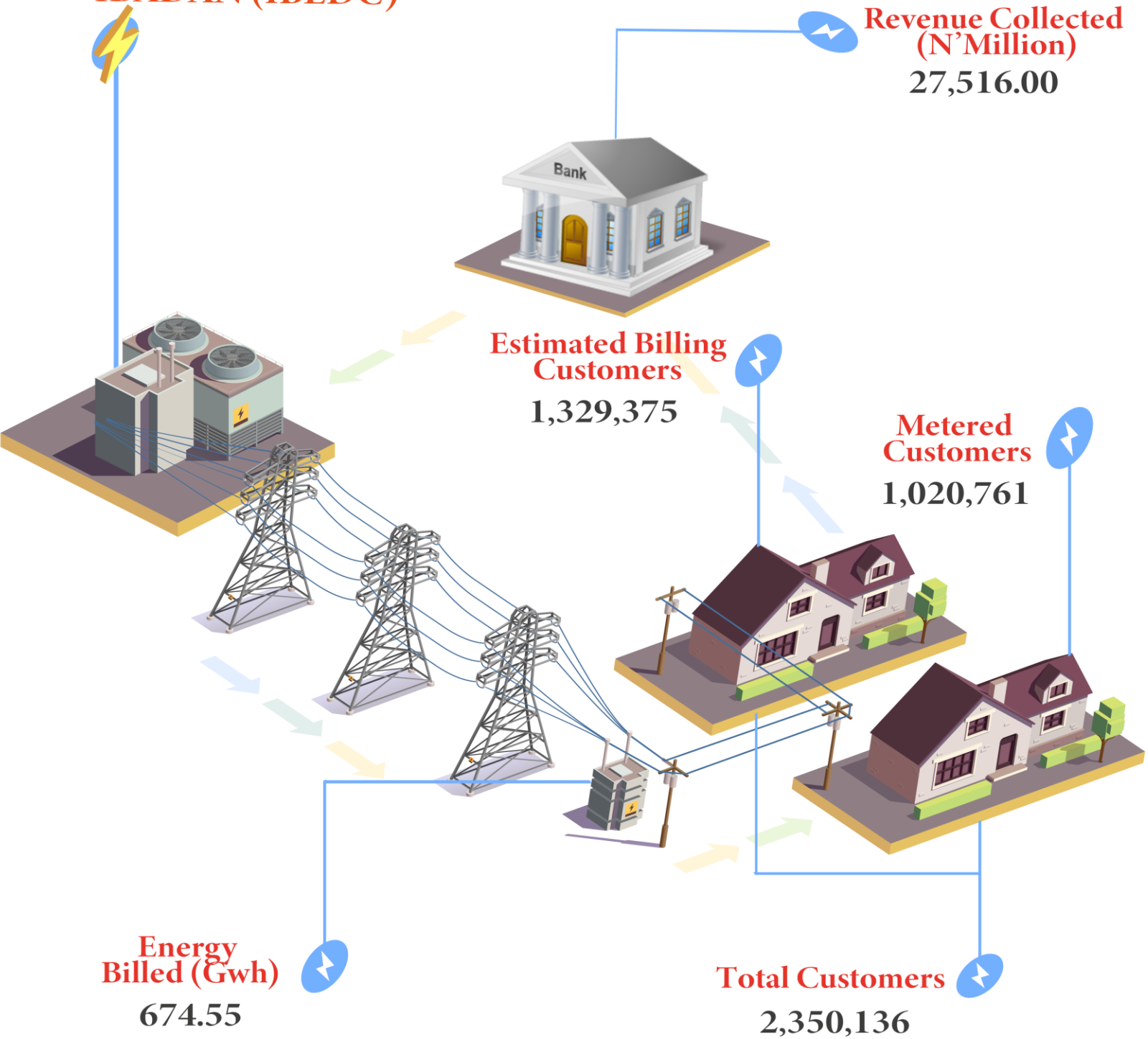


### ENUGU (EEDC)





### IBADAN (IBEDC)





### IKEJA (IEDC)

**Revenue Collected (N'Million)**  
56,803.11

**Estimated Billing Customers**  
227,062

**Metered Customers**  
891,367

**Energy Billed (Gwh)**  
1,121.05

**Total Customers**  
1,118,429

# NIGERIA ELECTRICITY REPORT

– Q3 2023



**JOS (JEDC)**

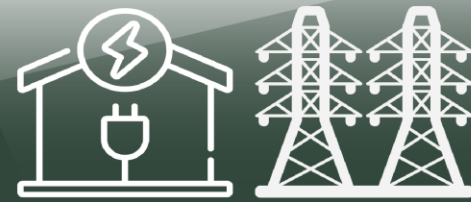
**Revenue Collected  
(N'Million)**  
8,954.10

**Estimated Billing  
Customers**  
482,045

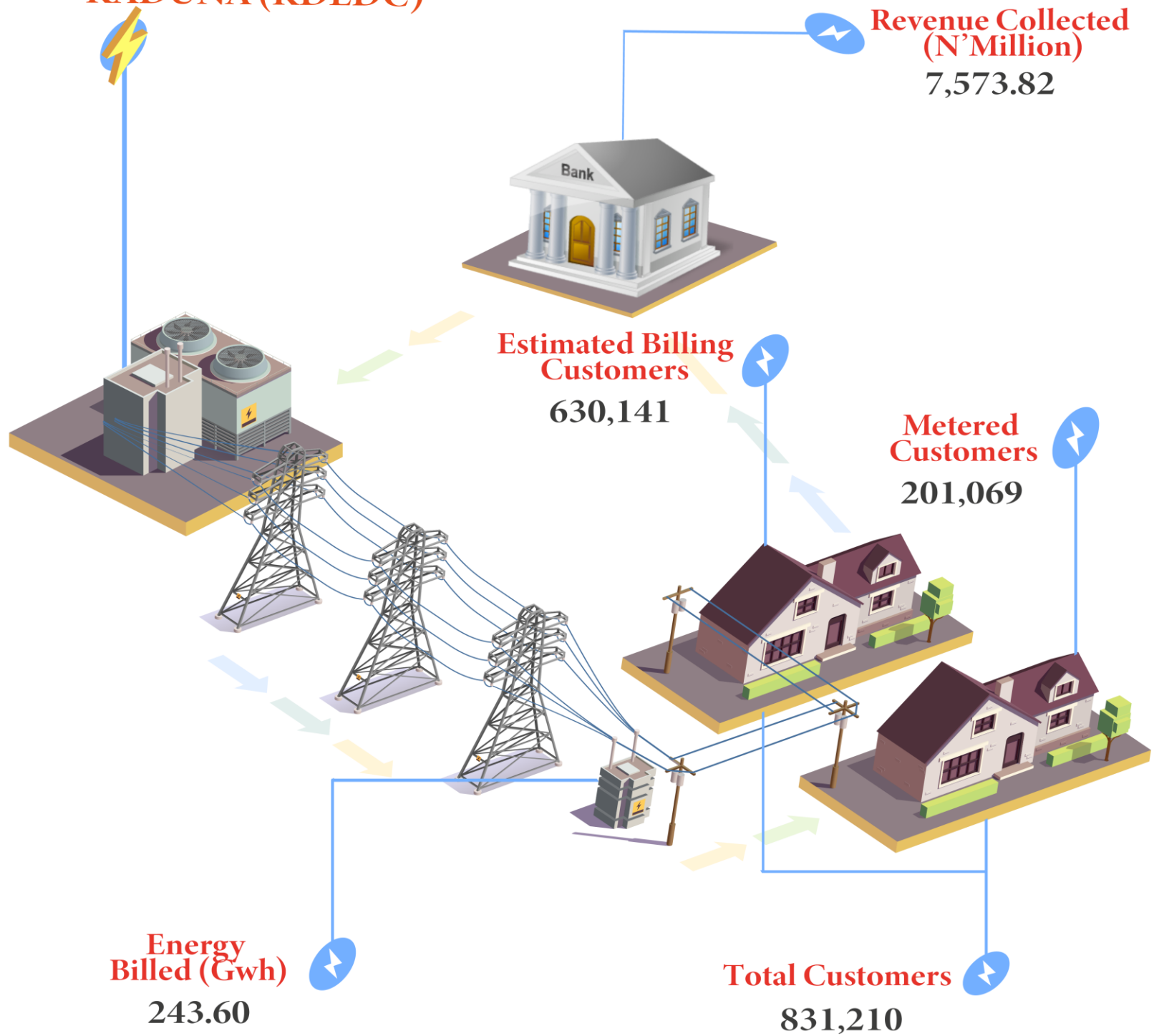
**Metered  
Customers**  
240,686

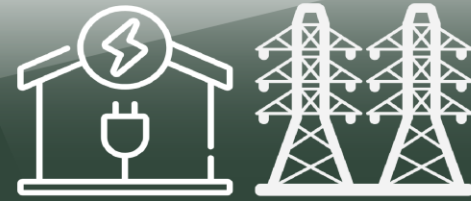
**Energy  
Billed (Gwh)**  
262.56

**Total Customers**  
722,731

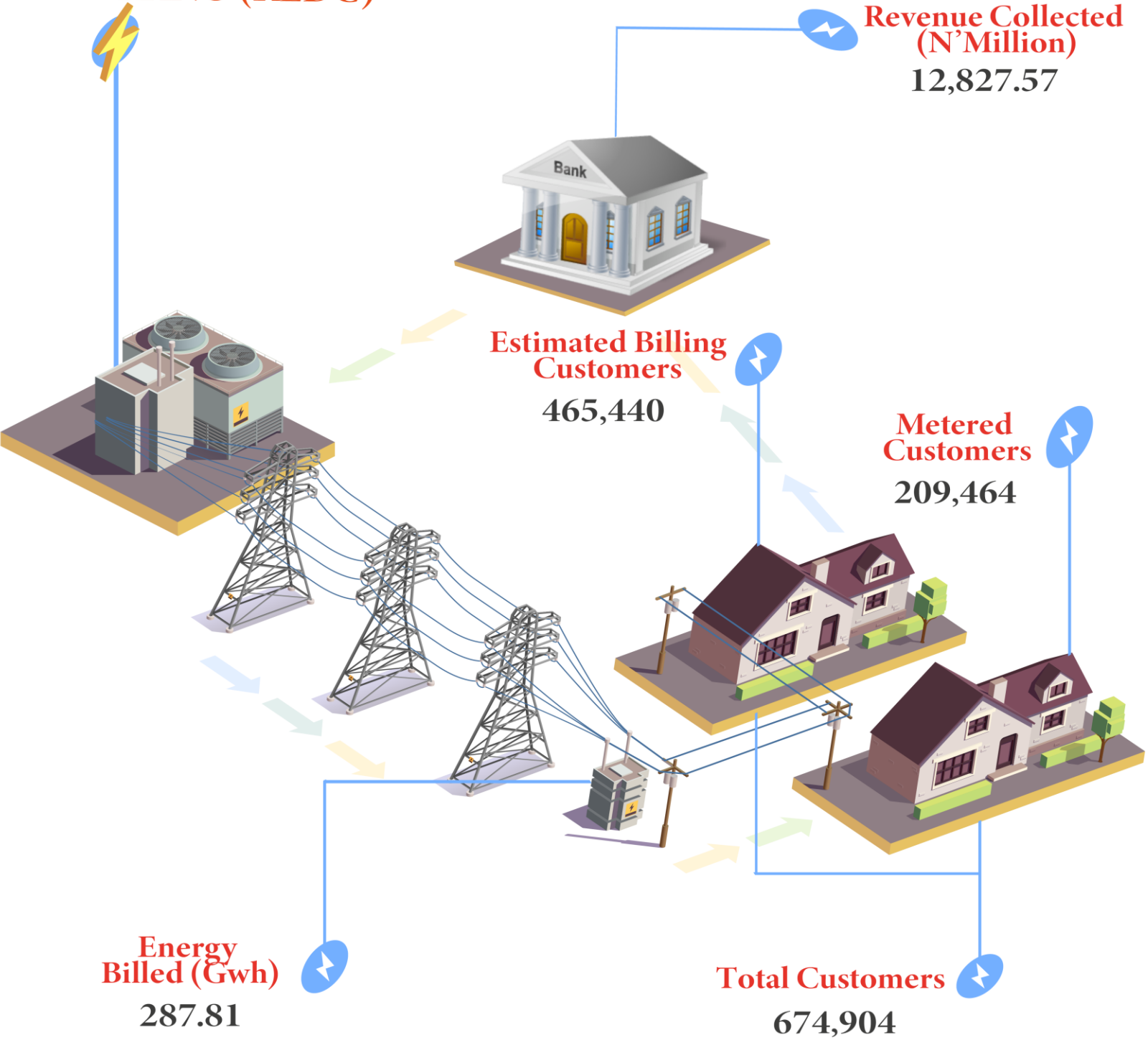


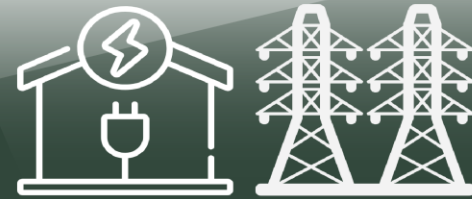
### KADUNA (KDEDC)



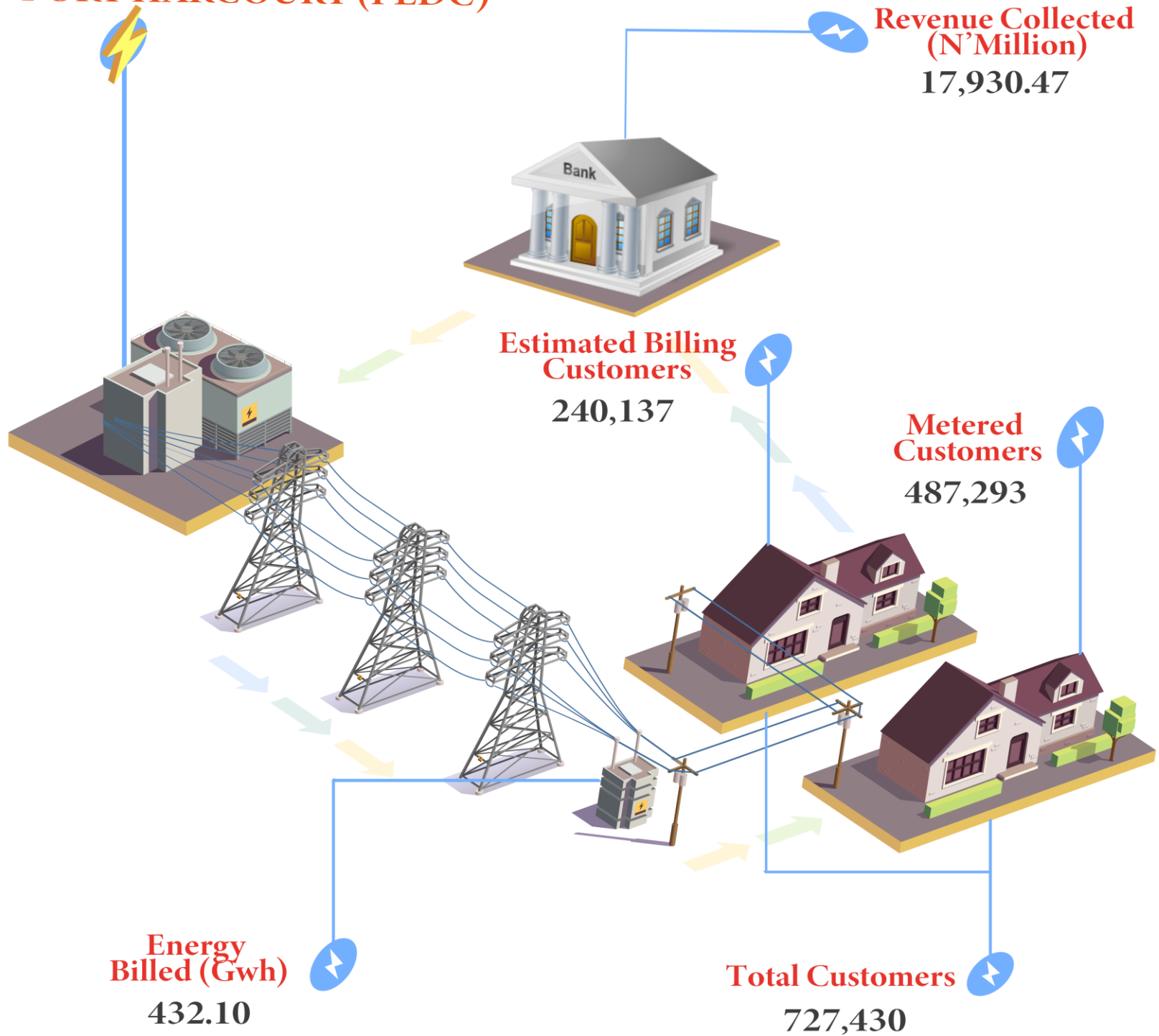


### KANO (KEDC)





### PORT HARCOURT (PEDC)





**YOLA (YEDC)**

**Revenue Collected (N' Million)**  
5,593.74

**Estimated Billing Customers**  
510,370

**Metered Customers**  
121,960

**Energy Billed (Gwh)**  
153.58

**Total Customers**  
632,330



## APPENDIX

TOTAL CUSTOMER NUMBER	Q3
<b>DISCOS</b>	<b>11,713,186</b>
ABUJA (AEDC)	1,388,325
BENIN (BEDC)	1,291,181
EKO (EKEDC)	681,000
ENUGU (EEDC)	1,295,510
IBADAN (IBEDC)	2,350,136
IKEJA (IEDC)	1,118,429
JOS (JEDC)	722,731
KADUNA (KDEDC)	831,210
KANO (KEDC)	674,904
PORT HARCOURT (PEDC)	727,430
YOLA (YEDC)	632,330

NUMBER OF METERED CUSTOMERS	Q3
<b>DISCOS</b>	<b>5,681,048</b>
ABUJA (AEDC)	841,555
BENIN (BEDC)	639,617
EKO (EKEDC)	426,096
ENUGU (EEDC)	601,180
IBADAN (IBEDC)	1,020,761
IKEJA (IEDC)	891,367
JOS (JEDC)	240,686
KADUNA (KDEDC)	201,069
KANO (KEDC)	209,464
PORT HARCOURT (PEDC)	487,293
YOLA (YEDC)	121,960

NUMBER OF ESTIMATED CUSTOMERS	Q3
<b>DISCOS</b>	<b>6,032,138</b>
ABUJA (AEDC)	546,770
BENIN (BEDC)	651,564
EKO (EKEDC)	254,904
ENUGU (EEDC)	694,330
IBADAN (IBEDC)	1,329,375
IKEJA (IEDC)	227,062
JOS (JEDC)	482,045
KADUNA (KDEDC)	630,141
KANO (KEDC)	465,440
PORT HARCOURT (PEDC)	240,137
YOLA (YEDC)	510,370

REVENUE COLLECTED (MILLION NAIRA)	Q3
<b>DISCOS</b>	<b>260,158.01</b>
ABUJA (AEDC)	39,946.00
BENIN (BEDC)	21,442.20
EKO (EKEDC)	42,454.00
ENUGU (EEDC)	19,117.00
IBADAN (IBEDC)	27,516.00
IKEJA (IEDC)	56,803.11
JOS (JEDC)	8,954.10
KADUNA (KDEDC)	7,573.82
KANO (KEDC)	12,827.57
PORT HARCOURT (PEDC)	17,930.47
YOLA (YEDC)	5,593.74

ENERGY BILLED/ELECTRICITY SUPPLY (GWh)	Q3
<b>DISCOS</b>	<b>5731.60</b>
ABUJA (AEDC)	741.00
BENIN (BEDC)	537.36
EKO (EKEDC)	858.00
ENUGU (EEDC)	420.00
IBADAN (IBEDC)	674.55
IKEJA (IEDC)	1121.05
JOS (JEDC)	262.56
KADUNA (KDEDC)	243.60
KANO (KEDC)	287.81
PORT HARCOURT (PEDC)	432.10
YOLA (YEDC)	153.58

### ACRONYMS

<b>ABUJA</b>	(AEDC)
<b>BENIN</b>	BEDC
<b>EKO</b>	EKEDC
<b>ENUGU</b>	EEDC
<b>IBADAN</b>	IBEDC
<b>IKEJA</b>	IEDC
<b>JOS</b>	JEDC
<b>KADUNA</b>	KDEDC
<b>KANO</b>	KEDC
<b>PORT HARCOURT</b>	PEDC
<b>YOLA</b>	YEDC

# CONTACT



## National Bureau of Statistics

Head Office

No 1, Wole Olanipekun Street,  
Formerly, Plot 762 Independence Avenue  
Off Constitution Avenue,  
CBD, Abuja, F. C. T.

## Mr. Ichedi S.J

Information Desk

Director, Communication & Public Relations  
Department (C&PRD)  
Phone: +2348037051701  
sjchedi@nigerianstat.gov.ng

## Moses Mathew

Statistical Information Officer

Phone: +2347069071157  
matmoses@nigerianstat.gov.ng



@nbs\_nigeria



NBSNigeria



nbs\_nigeria

