



NATIONAL BUREAU OF STATISTICS

Postal Services Data

(2021)

Report Date: January 2023

Data Source: National Bureau of Statistics (NBS)

Contents

Executive Summary	1
Number of Post Offices and Postal Agencies	2
Number of Postal Articles Handled in 2021	3
Revenue Generated for the Period January - December 2021	4
Summary of Information by State	5
Methodology	44
Appendix	45
Contacts	48

Executive Summary

The Nigerian Postal Service earned N3.63bn in 2021, lower than the revenue in 2020 by 22.79%. EMS/Speedpost generated the highest income with N1.27bn, representing 35.14% of the total revenue generated for the year. This was followed by Parcel clearance/delivery fee with N689.12mn, and NIPOST Premises/Space with N299.66mn, representing 18.96% and 8.25% respectively.

In addition, the agency handled a total of 17,656,768 mails domestically and internationally in 2021. About 8,111,461 mails were handled domestically, representing 45.94% of the total mails, while 1,040,461 mails were dispatched abroad, representing 5.89% of the total mails.

However, 8,504,846 mails were received from abroad and delivered in Nigeria, representing 48.17% of the total mails handled in the year. Also, in 2021, the number of Post Offices in Nigeria stood at 2,794.

POSTAL SERVICES DATA - 2021

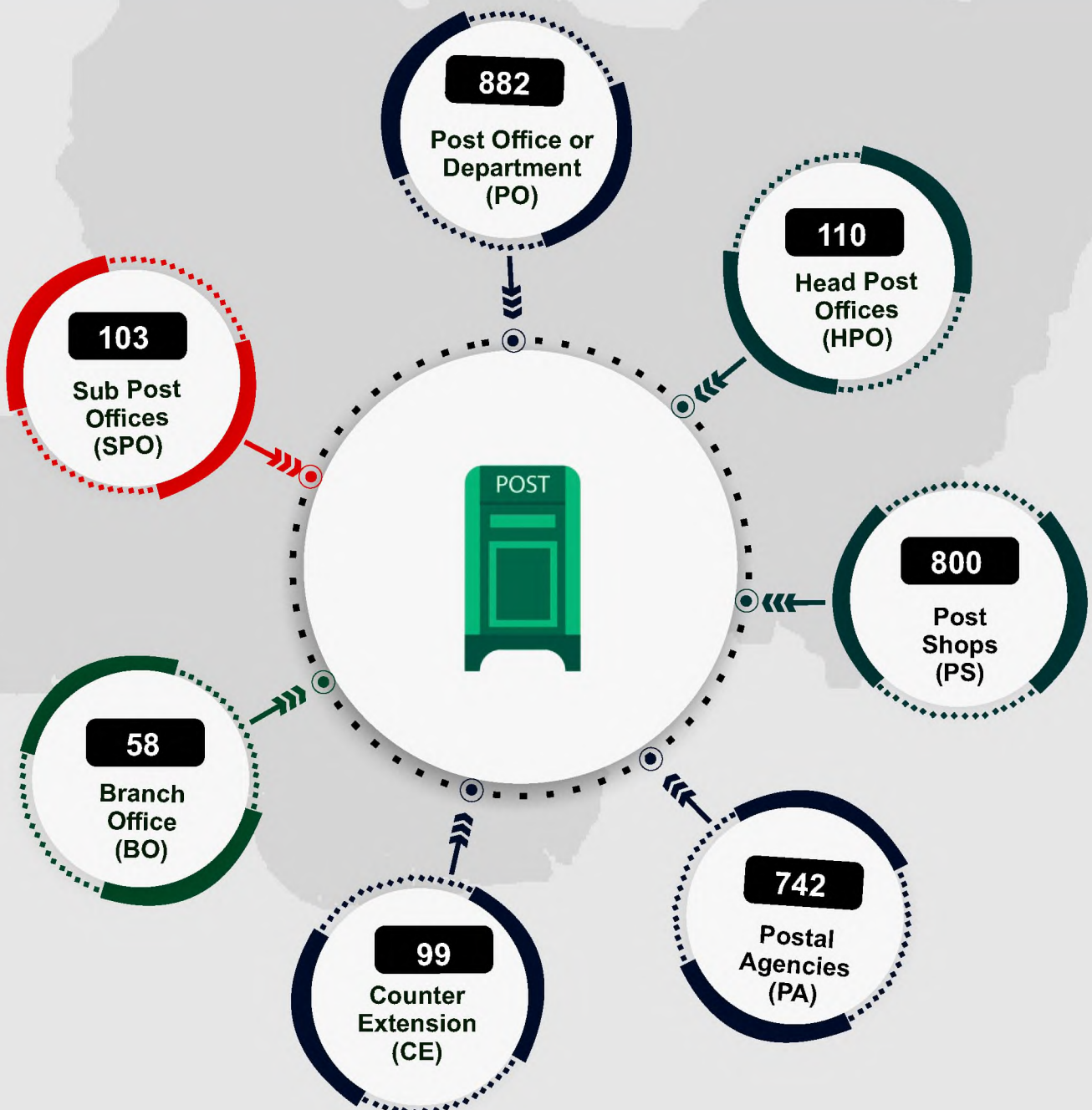
Number of Post Offices & Postal Agencies



TOTAL

Post Offices & Postal Agencies

2,794



POSTAL SERVICES DATA - 2021

Number of Postal Articles Handled in 2021



 2021

17,656,768

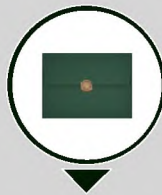
**TOTAL MAIL HANDLED
DOMESTIC/INTERNATIONAL**




Domestic Mail handled

 2021

8,111,461




Dispatched Abroad

 2021

1,040,461



**Mail received from Abroad
and delivered in Nigeria**

 2021

8,504,846

POSTAL SERVICES DATA - 2021

Revenue Generated for the Period
January - December 2021



PRIVATE MAIL BAG
RENEWAL FEE

26,386,905

PARCEL CLEARANCE/
DELIVERY FEE

689,122,444.74

BILLBOARD/
ADVERTISEMENT FEE

4,831,260.00

COURIER COMPANIES/
LICENCE FEE

25,250,000.00

SPECIAL DELIVERY/
SMALL PACKAGES

96,229,366.21

NON-REFUNDABLE
TENDER FEE

3,548,000.00

P.O. BOX
RENEWAL FEE

215,335,680.25

SALES OF STAMPS/
TAXED ITEMS

247,798,300.00

PHILATELY SALES

8,460,810.00

SALES OF
P.O.ID CARDS

1,007,507.00

SALES OF POSTAL
LITERATURE

497,791.11

INTERNATIONAL
REPLY COUPON

NON-REFUNDABLE
BAG DEPOSIT

1,322,444.00

COMMISSION ON
POSTAL/MONEY
ORDER

BANK INTEREST
RECEIVED

STAMP SOLD TO
POSTSHOP / POSTAL
AGENCIES

90,872,060.00

STAMP DUTY
(DENOTATION)

181,934,715.22

AGENCY SERVICES

2,592,490.86

TRANSPORT SERVICES

19,695,025.68

BUSINESS
VENTURE SERVICE

8,290,015.00

INTERNATIONAL
MAIL INCOME

185,334,669.33

NIPOST
PREMISES/SPACE

299,669,634.83

WRAPPING &
TIEING

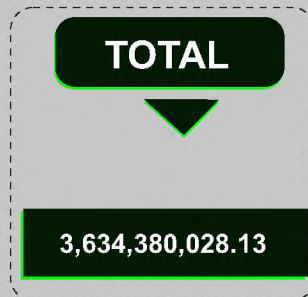
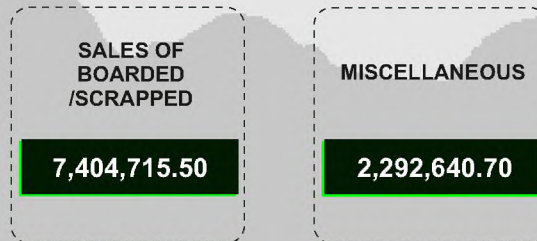
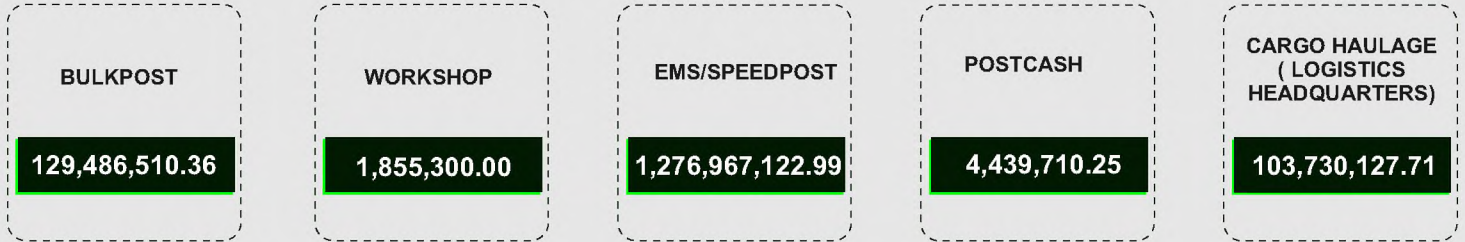
SHARE OF CUSTOM
DUTY (CON MAIL)

24,781.39

CARGO HAULAGE
(TERRITORIES-NMR)

POSTAL SERVICES DATA - 2021

Revenue Generated for the Period
January - December 2021



POSTAL SERVICES DATA - 2021

ABIA



BOX

Number Available

39,686

RENTED

NOT RENTED



Private

16,833



Business

3,330



19,523

Number not Rented

PMB

Available

905

Rented

158

Not Rented

747



POSTAL SERVICES DATA - 2021

ABUJA



BOX

Number Available

28,149

RENTED



Private

19,041



Business

3,457

NOT RENTED



5,651

Number not Rented

Available

1,347

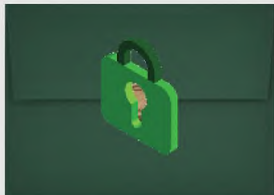
PMB

Rented

248

Not Rented

1,099



POSTAL SERVICES DATA - 2021

ADAMAWA



BOX

Number Available

10,756

RENTED



Private

3,887



Business

980

NOT RENTED



5,889

Number not Rented

PMB

Available

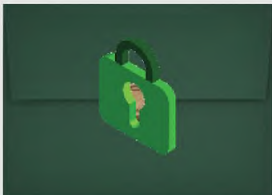
401

Rented

49

Not Rented

352



POSTAL SERVICES DATA - 2021

AKWA IBOM



BOX

Number Available

18,216

RENTED



Private

10,015



Business

1,808

NOT RENTED



6,393

Number not Rented

PMB

Available

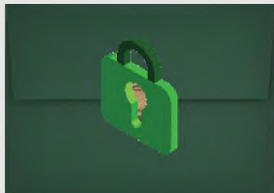
731

Rented

101

Not Rented

630



POSTAL SERVICES DATA - 2021

ANAMBRA



BOX

Number Available

60,947

RENTED



Private

39,706



Business

6,593

NOT RENTED



14,648

Number not Rented

PMB

Available

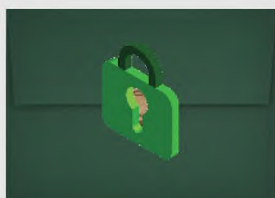
2,247

Rented

452

Not Rented

1,795



POSTAL SERVICES DATA - 2021

BAUCHI



BOX

Number Available

12,700

RENTED



Private

4,476



Business

1,073

NOT RENTED



7,151

Number not Rented

PMB

Available

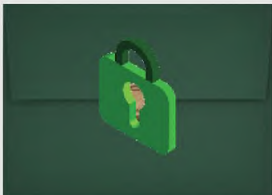
454

Rented

124

Not Rented

330



POSTAL SERVICES DATA - 2021


BAYELSA



BOX

Number Available
5,505

RENTED


Private
2,159


Business
613

NOT RENTED

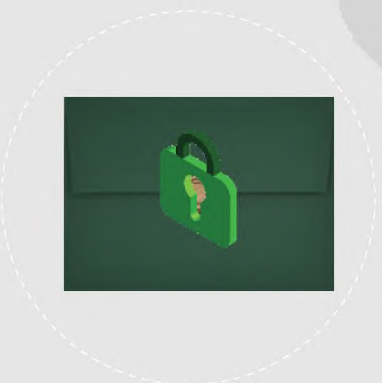

2,846
Number not Rented

PMB

Available
194

Rented
40

Not Rented
154



POSTAL SERVICES DATA - 2021

BENUE



BOX

Number Available

14,890

RENTED

NOT RENTED



Private

4,835



Business

2,133



7,922

Number not Rented

Available

475

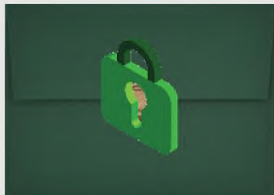
PMB

Rented

46

Not Rented

429



POSTAL SERVICES DATA - 2021

BORNO



BOX

Number Available

5,700

RENTED



Private

662



Business

3,455

NOT RENTED



2,105

Number not Rented

Available

359

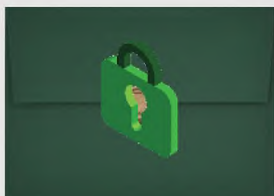
PMB

Rented

130

Not Rented

229



POSTAL SERVICES DATA - 2021


CROSS RIVER



BOX

Number Available
14,191

RENTED


Private
4,661


Business
1,886

NOT RENTED

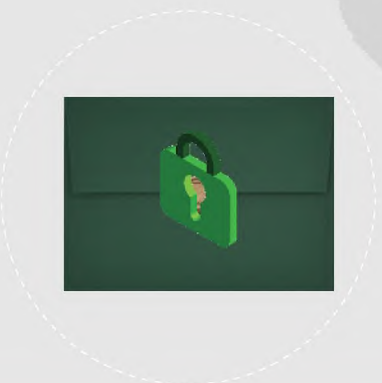

7,644
Number not Rented

PMB

Available
583

Rented
77

Not Rented
506



POSTAL SERVICES DATA - 2021


DELTA



BOX

Number Available
84,756

RENTED


Private
9,600


Business
2,329

NOT RENTED

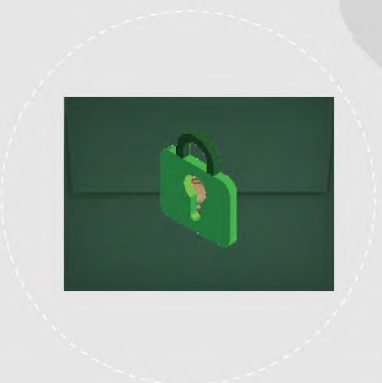

67,559
Number not Rented

PMB

Available
454

Rented
118

Not Rented
336



POSTAL SERVICES DATA - 2021

EBONYI



BOX

Number Available

4,542

RENTED

NOT RENTED



Private

3,585



Business

1,303



2,060

Number not Rented

Available

584

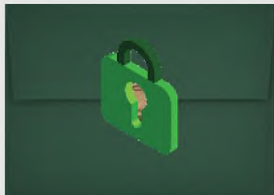
PMB

Rented

112

Not Rented

472



POSTAL SERVICES DATA - 2021


EDO



BOX

Number Available
24,696

RENTED


Private
11,859


Business
1,879

NOT RENTED

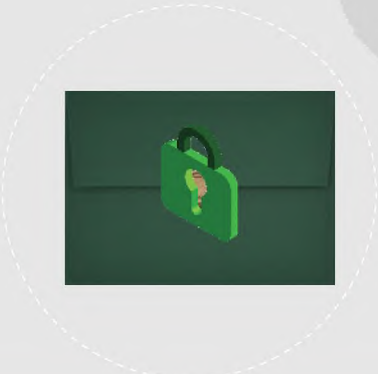

13,201
Number not Rented

PMB

Available
409

Rented
116

Not Rented
293



POSTAL SERVICES DATA - 2021

EKITI



BOX

Number Available

12,024

RENTED

NOT RENTED



Private

4,293



Business

1,256



6,475

Number not Rented

Available

271

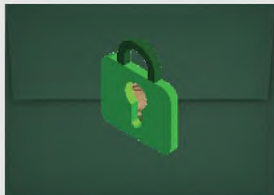
PMB

Rented

9

Not Rented

262



POSTAL SERVICES DATA - 2021


ENUGU



BOX

Number Available
27,552

RENTED


Private
10,167


Business
5,326

NOT RENTED

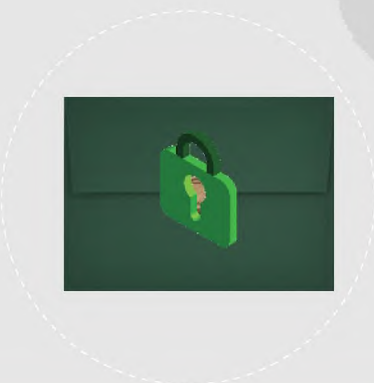

12,059
Number not Rented

PMB

Available
823

Rented
76

Not Rented
747



POSTAL SERVICES DATA - 2021

GOMBE



BOX

Number Available

5,000

RENTED



Private

970



Business

522

NOT RENTED



3,508

Number not Rented

PMB

Available

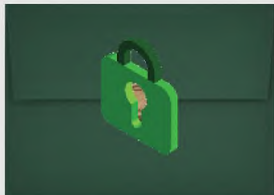
244

Rented

37

Not Rented

207



POSTAL SERVICES DATA - 2021

IMO



BOX

Number Available
42,156

RENTED

Private
17,331

Business
2,939

NOT RENTED

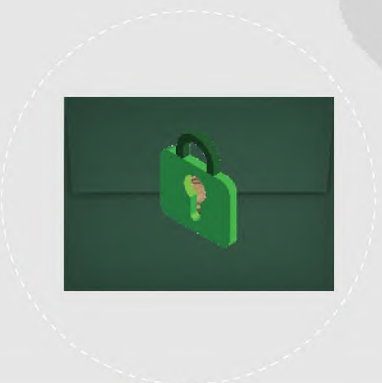
21,886
Number not Rented

PMB

Available
482

Rented
84

Not Rented
398



POSTAL SERVICES DATA - 2021

JIGAWA



BOX

Number Available

3,496

RENTED

NOT RENTED



Private

262



Business

152



3,082

Number not Rented

Available

249

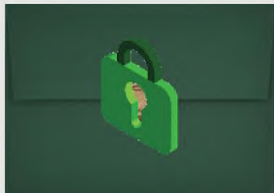
PMB

Rented

91

Not Rented

158



POSTAL SERVICES DATA - 2021


KADUNA



BOX

Number Available
28,788

RENTED


Private
11,676


Business
4,218

NOT RENTED

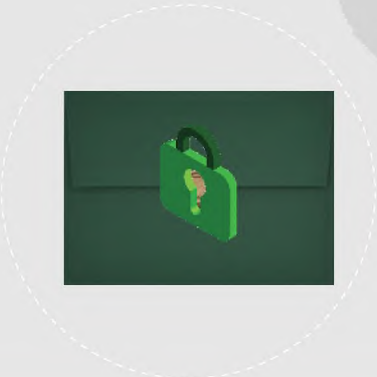

13,257
Number not Rented

PMB

Available
847

Rented
240

Not Rented
607



POSTAL SERVICES DATA - 2021


KANO



BOX

Number Available
18,403

RENTED


Private
10,904


Business
1,345

NOT RENTED

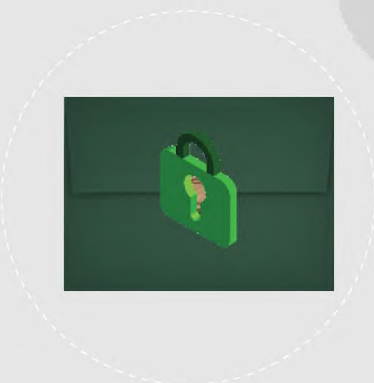

6,154
Number not Rented

PMB

Available
585

Rented
69

Not Rented
516



POSTAL SERVICES DATA - 2021


KATSINA



BOX

Number Available
4,042

RENTED


Private
1,896


Business
639

NOT RENTED

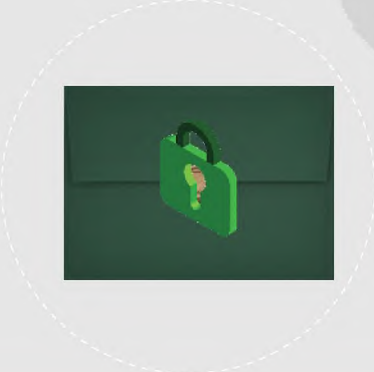

1,507
Number not Rented

PMB

Available
524

Rented
155

Not Rented
369



POSTAL SERVICES DATA - 2021


KEBBI



BOX

Number Available
3,732

RENTED


Private
1,289


Business
482

NOT RENTED

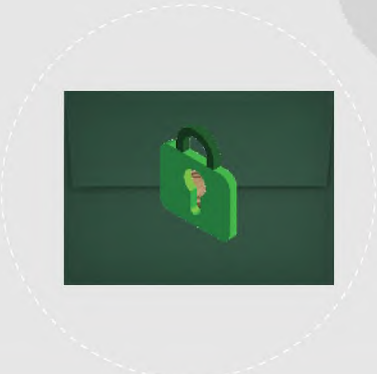

1,961
Number not Rented

PMB

Available
405

Rented
10

Not Rented
395



POSTAL SERVICES DATA - 2021

KOGI



BOX

Number Available

14,532

RENTED

NOT RENTED



Private

5,241



Business

2,054



7,246

Number not Rented

Available

542

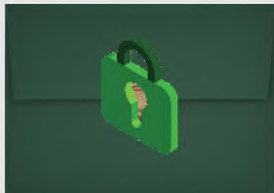
PMB

Rented

31

Not Rented

511



POSTAL SERVICES DATA - 2021


KWARA



BOX

Number Available
18,378

RENTED


Private
5,727


Business
1,673

NOT RENTED

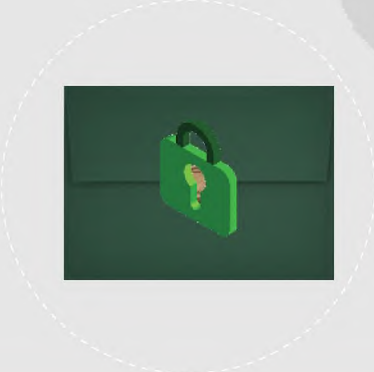

10,978
Number not Rented

PMB

Available
400

Rented
95

Not Rented
305



POSTAL SERVICES DATA - 2020

LAGOS



BOX

Number Available

41,708

RENTED



Private

93,715



Business

27,808

NOT RENTED



5,593

Number not Rented

PMB

Available

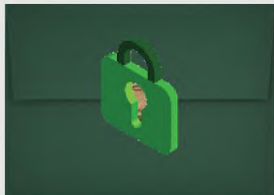
1,237

Rented

378

Not Rented

859



POSTAL SERVICES DATA - 2021

NASARAWA



BOX

Number Available

4,492

RENTED



Private

1,542



Business

825

NOT RENTED



2,125

Number not Rented

Available

239

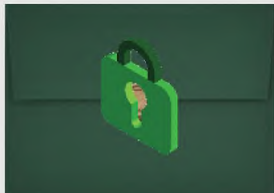
PMB

Rented

29

Not Rented

210



POSTAL SERVICES DATA - 2021


NIGER




BOX

Number Available
16,972

RENTED


Private
4,562


Business
2,570

NOT RENTED

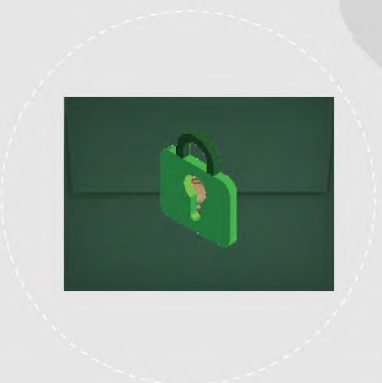

9,840
Number not Rented

PMB

Available
502

Rented
86

Not Rented
416



POSTAL SERVICES DATA - 2021

OGUN



BOX

Number Available

24,264

RENTED

NOT RENTED



Private

12,589



Business

2,380



9,395

Number not Rented

Available

368

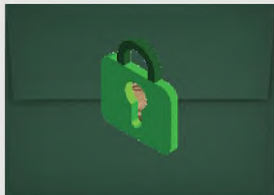
PMB

Rented

73

Not Rented

295



POSTAL SERVICES DATA - 2021


ONDO



BOX

Number Available
19,319

RENTED


Private
8,881


Business
1,873

NOT RENTED

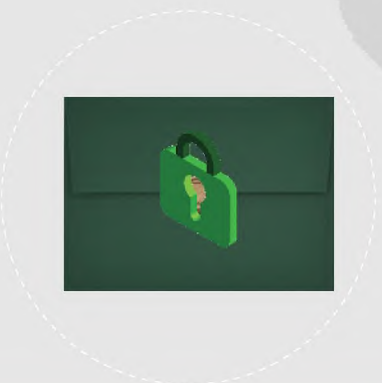

8,565
Number not Rented

PMB

Available
501

Rented
54

Not Rented
447



POSTAL SERVICES DATA - 2021


OSUN



BOX

Number Available
26,714

RENTED


Private
10,484


Business
3,834

NOT RENTED

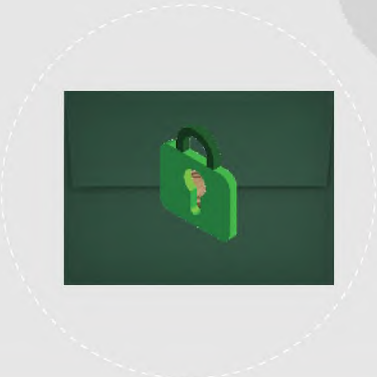

12,396
Number not Rented

PMB

Available
486

Rented
53

Not Rented
433



POSTAL SERVICES DATA - 2021

OYO



BOX

Number Available

49,592

RENTED

NOT RENTED



Private

29,059



Business

5,659



14,874

Number not Rented

Available

995

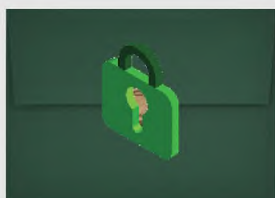
PMB

Rented

367

Not Rented

628



POSTAL SERVICES DATA - 2021


PLATEAU




BOX

Number Available
15,505

RENTED


Private
6,318


Business
2,631

NOT RENTED

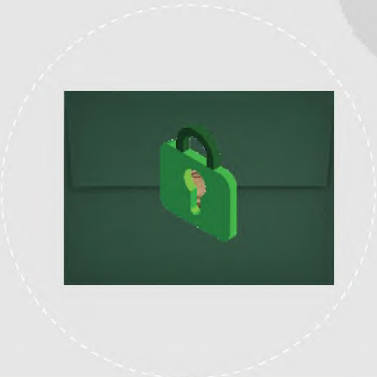

6,556
Number not Rented

PMB

Available
374

Rented
49

Not Rented
325



POSTAL SERVICES DATA - 2021

RIVERS



BOX

Number Available

28,323

RENTED



Private

15,312



Business

4,620

NOT RENTED



8,391

Number not Rented

PMB

Available

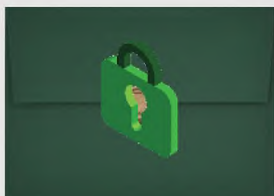
2,282

Rented

246

Not Rented

2,036



POSTAL SERVICES DATA - 2021


SOKOTO



BOX

Number Available
8,900

RENTED


Private
1,308


Business
277

NOT RENTED


7,315
Number not Rented

PMB

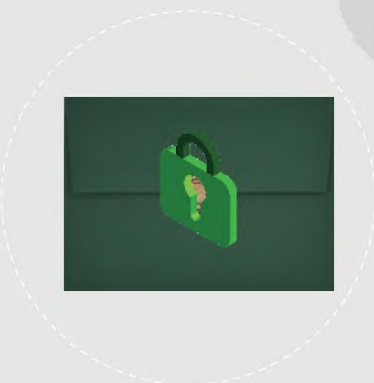
Available
339



Rented
21



Not Rented
318



POSTAL SERVICES DATA - 2021

TARABA



BOX

Number Available

5,630

RENTED



Private

1,101



Business

2,477

NOT RENTED



2,052

Number not Rented

Available

311

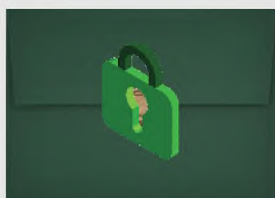
PMB

Rented

38

Not Rented

273



POSTAL SERVICES DATA - 2021


YOBE



BOX

Number Available
2,247

RENTED


Private
148


Business
963

NOT RENTED

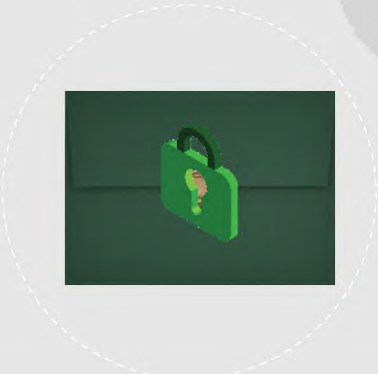

1,165
Number not Rented

PMB

Available
310

Rented
200

Not Rented
110



POSTAL SERVICES DATA - 2021

ZAMFARA



BOX

Number Available

5,000

RENTED



Private

831



Business

444

NOT RENTED



3,725

Number not Rented

Available

230

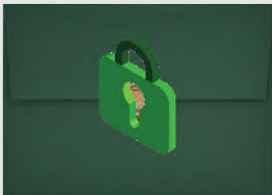
PMB

Rented

42

Not Rented

188



POSTAL SERVICES DATA - 2021

TOTAL



BOX

Number Available

751,503

RENTED



Private

386,925



Business

107,806

NOT RENTED



342,697

Number not Rented

Available

22,689

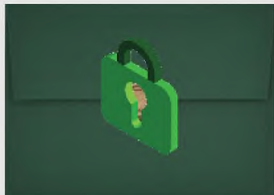
PMB

Rented

4,304

Not Rented

18,385



Methodology

Data is provided by the Nigerian Postal Service (NIPOST), verified and validated by the National Bureau of Statistics (NBS)

APPENDIX

NUMBER OF POST OFFICES & POSTAL AGENCIES		
S/N	POST OFFICES/POSTAL AGENCIES	2021
1	Branch Office (BO)	58
2	Counter Extension (CE)	99
3	Head Post Offices (HPO)	110
4	Post Office or Department (PO)	882
5	Sub Post Offices (SPO)	103
6	Postal Agencies (PA)	742
7	Post Shops (PS)	800
	Total	2,794
S/N	NUMBER OF POSTAL ARTICLES HANDLED IN YEAR	2021
1	Domestic Mail handled	8,111,461
2	Dispatched Abroad	1,040,461
3	Mail received from Abroad and delivered in Nigeria	8,504,846
4	Total mail handled Domestic/International	17,656,768

NIPOST REVENUE ON PRODUCT BASIS

S/N	DETAILS	2021
1	PRIVATE MAIL BAG RENEWAL FEE	26,386,905.00
2	PARCEL CLEARANCE/ DELIVERY FEE	689,122,444.74
3	BILLBOARD/ADVERTISEMENT FEE	4,831,260.00
4	COURIER COMPANIES LICENCE FEE	25,250,000.00
5	SPECIAL DELIVERY/SMALL PACKAGES	96,229,366.21
6	NON-REFUNDABLE TENDER FEE	3,548,000.00
7	P.O.BOX RENEWAL FEE	215,335,680.25
8	SALES OF STAMP/ TAXED ITEMS	247,798,300.00
9	PHILATELY SALES	8,460,810.00
10	SALES OF P.O.ID CARDS	1,007,507.00
11	SALES OF POSTAL LITERATURE	497,791.11
12	INTERNATIONAL REPLY COUPON	
13	NON-REFUNDABLE BAG DEPOSIT	1,322,444.00
14	COMMISSION ON POSTAL/MONEY ORDER	
15	BANK INTEREST RECEIVED	
16	STAMP SOLD TO POSTSHOP/POSTAL AGENCIES	90,872,060.00
17	STAMP DUTY(DENOTATION)	181,934,715.22
18	AGENCY SERVICES	2,592,490.86
19	TRANSPORT SERVICES	19,695,025.68
20	BUSINESS VENTURE SERVICE	8,290,015.00
21	INTERNATIONAL MAIL INCOME	185,334,669.33
22	NIPOST PREMISES/SPACE	299,669,634.83
23	WRAPPING & TIEING	
24	SHARE OF CUSTOM DUTY (CON MAIL)	24,781.39
25	CARGO HAULAGE (TERRITORIES-NMR)	
26	BULKPOST	129,486,510.36
27	WORKSHOP	1,855,300.00
28	EMS/SPEEDPOST	1,276,967,122.99
29	POSTCASH	4,439,710.25
30	CARGO HAULAGE (LOGISTICS HEADQUARTERS)	103,730,127.71
31	SALES OF BOARDED/SCRAPPED	7,404,715.50
32	MISCELLANEOUS	2,292,640.70
	TOTAL	3,634,380,028.13

		2021					
TERRITORY	Number of P.O. available	Number of P.O. Private Rented	Number of P.O. Business Rented	Number of P.O. not Rented	Number of PMB Available	Number of PMB Rented	Number of PMB not Rented
ABIA	39,686	16,833	3,330	19,523	905	158	747
ABUJA	28,149	19,041	3,457	5,651	1,347	248	1,099
ADAMAWA	10,756	3,887	980	5,889	401	49	352
AKWA-IBOM	18,216	10,015	1,808	6,393	731	101	630
ANAMBRA	60,947	39,706	6,593	14,648	2,247	452	1,795
BAUCHI	12,700	4,476	1,073	7,151	454	124	330
BAYELSA	5,505	2,159	613	2,846	194	40	154
BENUE	14,890	4,835	2,133	7,922	475	46	429
BORNO	5,700	662	3,455	2,105	359	130	229
CROSS-RIVER	14,191	4,661	1,886	7,644	583	77	506
DELTA	84,756	9,600	2,329	67,559	454	118	336
EBONYI	4,542	3,585	1,303	2,060	584	112	472
EDO	24,696	11,859	1,879	13,201	409	116	293
EKITI	12,024	4,293	1,256	6,475	271	9	262
ENUGU	27,552	10,167	5,326	12,059	823	76	747
GOMBE	5,000	970	522	3,508	244	37	207
IMO	42,156	17,331	2,939	21,886	482	84	398
JIGAWA	3,496	262	152	3,082	249	91	158
KADUNA	28,788	11,676	4,218	13,257	847	240	607
KANO	18,403	10,904	1,345	6,154	585	69	516
KATSINA	4,042	1,896	639	1,507	524	155	369
KEBBI	3,732	1,289	482	1,961	405	10	395
KOGI	14,532	5,241	2,054	7,246	542	31	511
KWARA	18,378	5,727	1,673	10,978	400	95	305
LAGOS	41,708	93,715	27,808	5,593	1,237	378	859
NASARAWA	4,492	1,542	825	2,125	239	29	210
NIGER	16,972	4,562	2,570	9,840	502	86	416
OGUN	24,264	12,589	2,380	9,395	368	73	295
ONDO	19,319	8,881	1,873	8,565	501	54	447
OSUN	26,714	10,484	3,834	12,396	486	53	433
OYO	49,592	29,059	5,659	14,874	995	367	628
PLATEAU	15,505	6,318	2,631	6,556	374	49	325
RIVERS	28,323	15,312	4,620	8,391	2,282	246	2,036
SOKOTO	8,900	1,308	277	7,315	339	21	318
TARABA	5,630	1,101	2,477	2,052	311	38	273
YOBE	2,247	148	963	1,165	310	200	110
ZAMFARA	5000	831	444	3,725	230	42	188
TOTAL	751,503	386,925	107,806	342,697	22,689	4,304	18,385

CONTACT



National Bureau of Statistics

Head Office

Plot 762 Independence Avenue,
Central Business District, Garki
Abuja.

Sunday J. Ichedi

Information Desk

Head, Communication & Public
Relations Department (C&PRD)
Phone: +2348037051701
sjchedi@nigerianstat.gov.ng

Moses Mathew

Statistical Information Officer

Phone: +2347069071157
matmoses@nigerianstat.gov.ng

Nuhu Joseph Waney II

Chief of Protocol

Phone: +2348037020063
jwnuhu@nigerianstat.gov.ng



@nbsnigeria



NBSNigeria



nbs_nigeria

