



NATIONAL BUREAU OF STATISTICS

Consumer Price Index

November 2022

(BASE PERIOD NOVEMBER 2009 = 100)

Report Date: December 2022

Data Source: National Bureau of Statistics (NBS)

CONTENT

Brief Methodology	3
All Item Index	7
Food Index	13
All Items Less Farm Produce	15
State Profile	16
Appendix	19
Contact	24

BRIEF METHODOLOGY

The CPI measures the average change over time in the prices of goods and services consumed by people for day-to-day living. The construction of the CPI combines economic theory, sampling, and other statistical techniques using data from other surveys to produce a weighted measure of average price changes in the Nigerian economy. The weighting occurs to capture the importance of the selected commodities in the entire index. The production of the CPI requires the skills of economists, statisticians, computer scientists, data collectors, and others.

Key in the construction of the price index is the selection of the market basket of goods and services. Every month, 10,534 informants spread across the country provide price data for the computation of the CPI. The market items currently comprise 740 goods and services regularly priced. The first stage in the calculation of the CPI is the collection of prices on each item (740 goods and services) from outlets in each sector (rural or urban) for each state. Prices are then averaged for each item per sector across the state. The next step is to use the average price to calculate the basic index for each commodity: The current year price of each commodity is compared with a base year's price to obtain a relative price.

Next, we use the Laspeyres formula to compute an aggregated index for each class (which has a multitude of commodities that have similar consumption purposes): Here the sum of the product of weights (obtained from the expenditure survey) and relative prices for each item is divided by the sum of the weight of the items in that class, and the result multiplied by 100 gives the required index number. This index number is still classified according to the urban and rural sectors for each of the 36 states

and the FCT. This yields 85 classes then 48 groups which are then reclassified into 12 Divisions to derive:

1. The Country Composite Index

2. The Urban National Index
3. The Rural National Index
4. The Combined Urban and Rural State Composite Index

The survey methodology generates 3774 all-items indices for all states and the FCT.

This edition of the Statistical News contains the revised Consumer Price Index (CPI) based on Nigeria Living Standard Survey (NLSS) 2003/2004. The consumption expenditure data were re-valued to November 2009, which is the base period for the revised CPI.

The May 2003 and September 1985-based indices are being continued using factors derived from the new CPI. These indices will yield the same price change for any commodity group contained in all the series.

A new sub-index Imported Food Index- is available in the revised CPI.

Note: The urban and rural indices were weighted with the ratio of their populations to the national i.e., 0.455 and 0.545 respectively to compute the composite indices at the 12 Classification of Individual Consumption by Purpose (COICOP) functions and all-items levels. This may cause a variance between a recalculated all items index using the weights and the All-Items index published because the weights were computed only from the consumption expenditure survey result.

The following breakdown highlights a non-exhaustive list of the components of the current CPI:



HOUSING, WATER, ELECTRICITY AND GAS



Actual and imputed rentals for housing



Water supply



Liquid fuel



Electricity



Gas

FURNISHINGS, HOUSEHOLD EQUIPMENT



Furniture and furnishings



Household textiles



Repair of household appliances



Carpets and other floor coverings



Non-durable household goods

HEALTH



Pharmaceutical products



Medical services



Dental services



Hospital services



Paramedical services

TRANSPORT



Motor cars



Motor cycles



Passenger transport by air



Passenger transport by road



Passenger transport by sea and inland waterways

COMMUNICATION



Postal services



Telephone and telefax equipment



Telephone and telefax services

RECREATION AND CULTURE



Photographic development



Musical instrument



Recreational and sporting services



Games of chance



Audio-visual, photographic and information processing equipment

EDUCATION



Books & stationery

RESTAURANTS AND HOTELS



Accommodation services



Catering services

MISCELLANEOUS GOODS AND SERVICES



Hairdressing salons and personal grooming establishments



Jewellery, clocks and watches



Appliances, articles and products for personal care



Insurance



Other services

ALL ITEMS INDEX

In November 2022, on a year-on-year basis, the headline inflation rate was 21.47%. This was 6.07% points higher compared to the rate recorded in November 2021, which was 15.40%. This means that in the month of November 2022, the general price level was 6.07% higher relative to November 2021.

On a month-on-month basis, the Headline inflation rate in November 2022 was 1.39%, this was 0.15% higher than the rate recorded in October 2022 (1.24%). This means that in the month of November 2022, the general price level was 0.15% higher relative to October 2022.

The percentage change in the average CPI for the twelve months period ending November 2022 over the average of the CPI for the previous twelve months period was 18.37%, showing a 1.39% increase compared to 16.98% recorded in November 2021.

The Increases were recorded in all COICOP divisions that yielded the Headline index.

LIKELY FACTORS RESPONSIBLE FOR THE INCREASE IN THE MONTHLY INFLATION RATE (Month-on-month basis).

The increase in the monthly inflation rate can be attributed to the sharp increase in demand usually experience during the festive season.

LIKELY FACTORS RESPONSIBLE FOR THE INCREASE IN ANNUAL INFLATION RATE (Year-on-Year basis).

- A. Increase in cost of importation due to the persistent currency depreciation
- B. General increase in the cost of production e.g increase in energy cost

URBAN INFLATION

On a year-on-year basis, in the month of November 2022, the urban inflation rate was 22.09%, this was 6.17% higher compared to the 15.92% recorded in November 2021. On a month-on-month basis, the urban inflation rate was 1.50% in November 2022, this was 0.16% higher compared to October 2022 (1.33%). The corresponding twelve-month average for the urban inflation rate was 18.90% in November 2022. This was 1.35% higher compared to the 17.55% reported in November 2021.

RURAL INFLATION

The rural inflation rate in November 2022 was 20.88% on a year-on-year basis; this was 5.99% higher compared to 14.89% recorded in November 2021. On a month-on-month basis, the rural inflation rate in November 2022 was 1.30%, up by 0.14% compared to October 2022 (1.16%). The corresponding twelve-month average for the rural inflation rate in November 2022 was 17.88%. This was 1.46% higher compared to the 16.42% recorded in November 2021.



NATIONAL BUREAU OF STATISTICS

HEADLINE CPI IN NOVEMBER 2022 ROSE BY

21.47%

YEAR-ON-YEAR

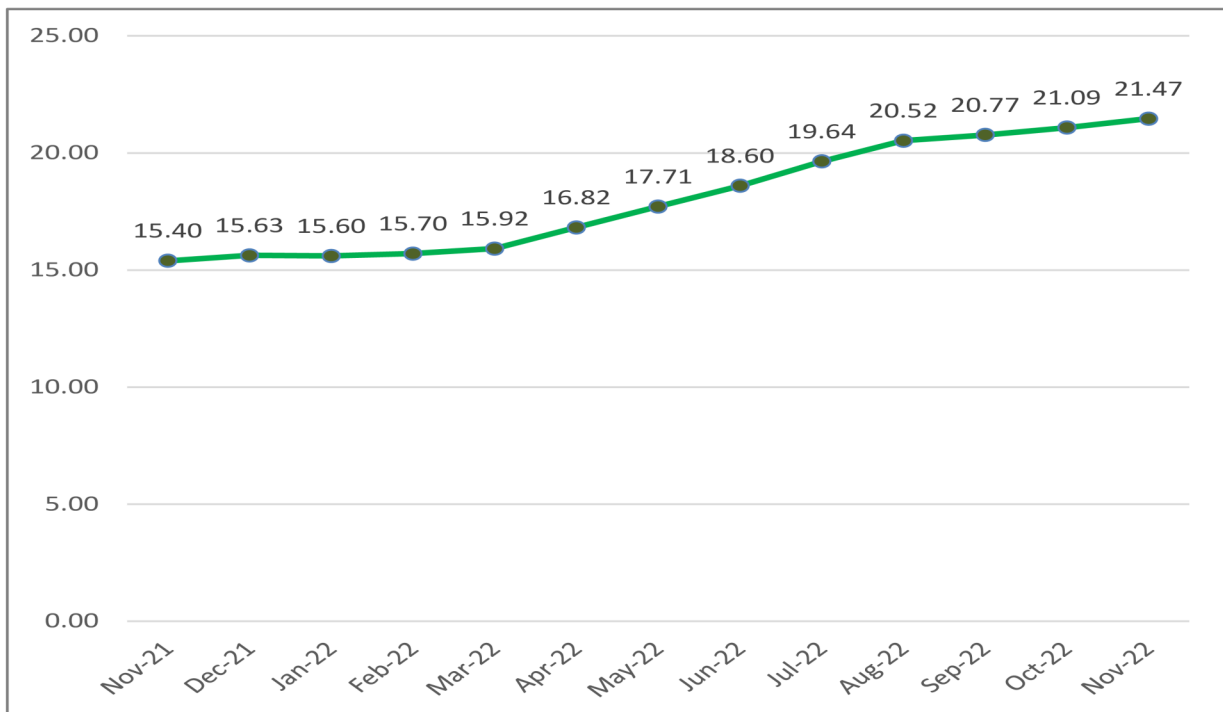
(FROM 15.40% IN NOVEMBER 2021)

1.39%

MONTH-ON-MONTH

(FROM 1.24% IN OCTOBER 2022)

CPI (%) HEADLINE 12-MONTH SERIES



The CPI (Consumer Price Index) measures the average change over time in prices of goods and services consumed by people for day-to-day living i.e it measures the inflation rate



NATIONAL BUREAU OF STATISTICS

URBAN

22.09%

YEAR-ON-YEAR

(FROM 15.92% IN NOVEMBER 2021)

1.50%

MONTH-ON-MONTH

(FROM 1.33% IN OCTOBER 2022)



URBAN AND RURAL INDEX



RURAL

20.88%

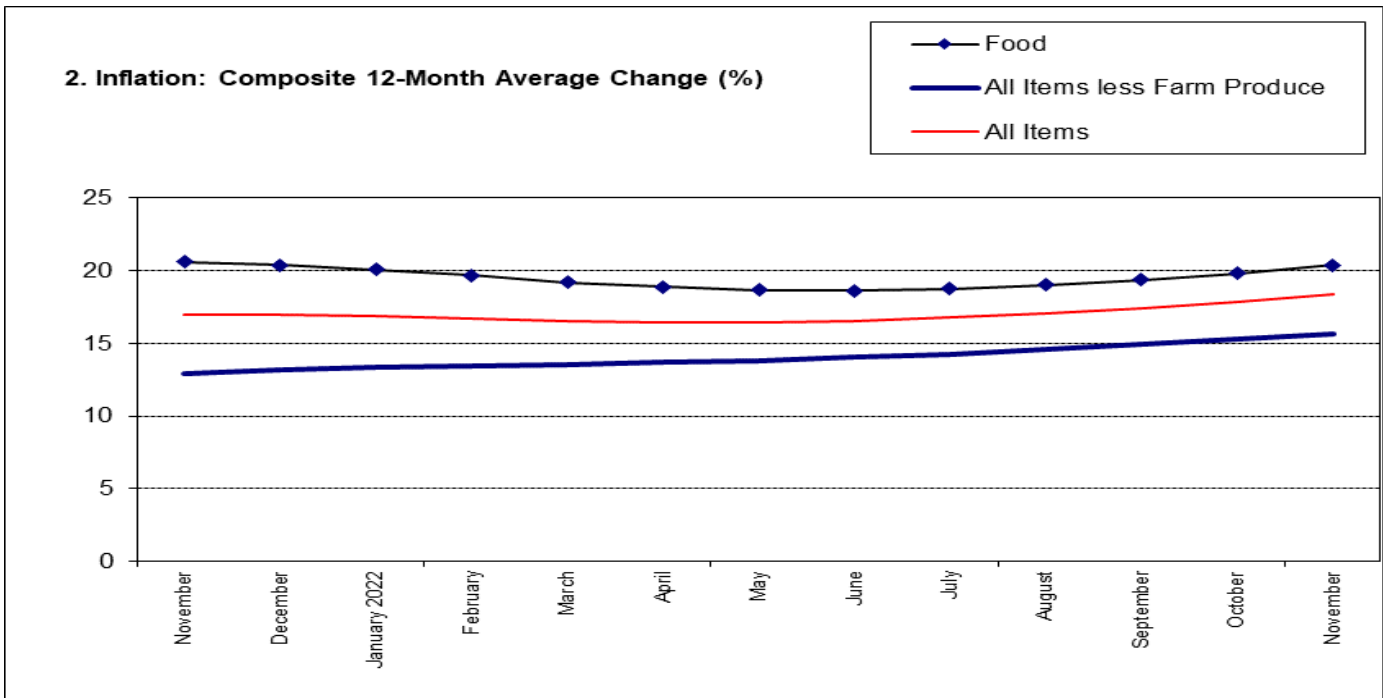
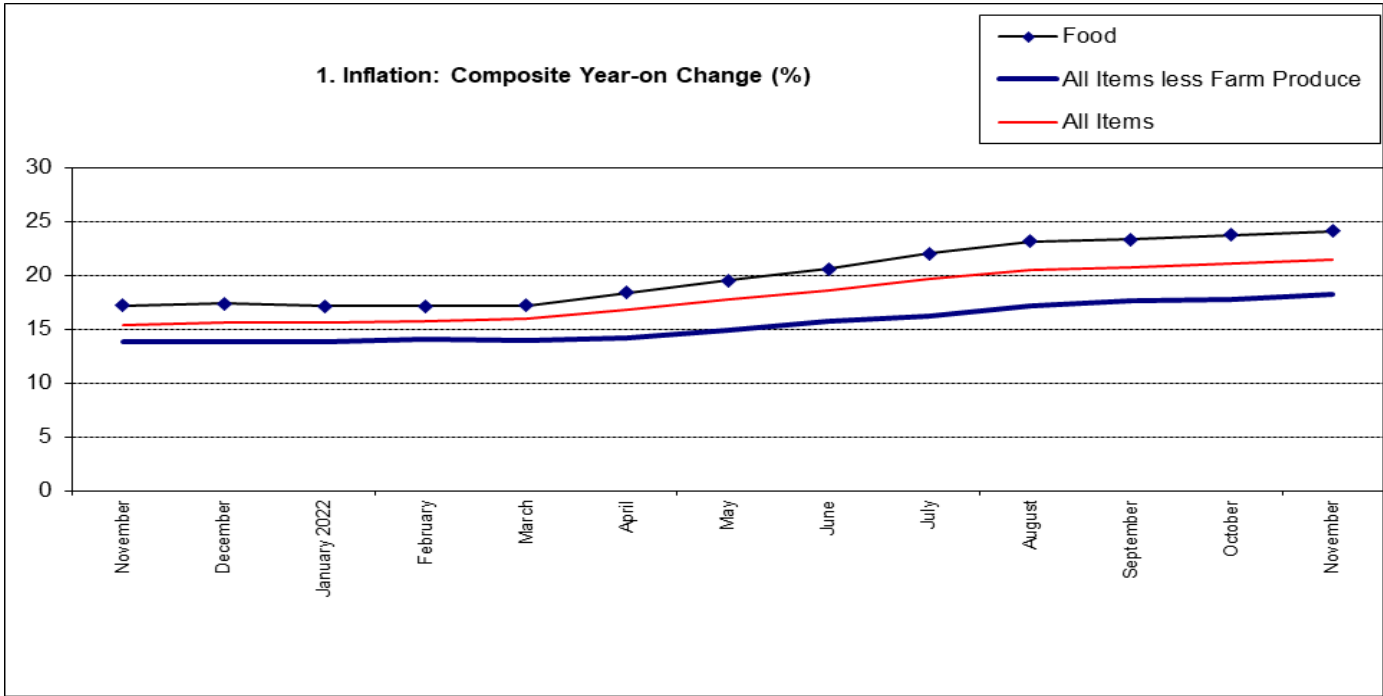
YEAR-ON-YEAR

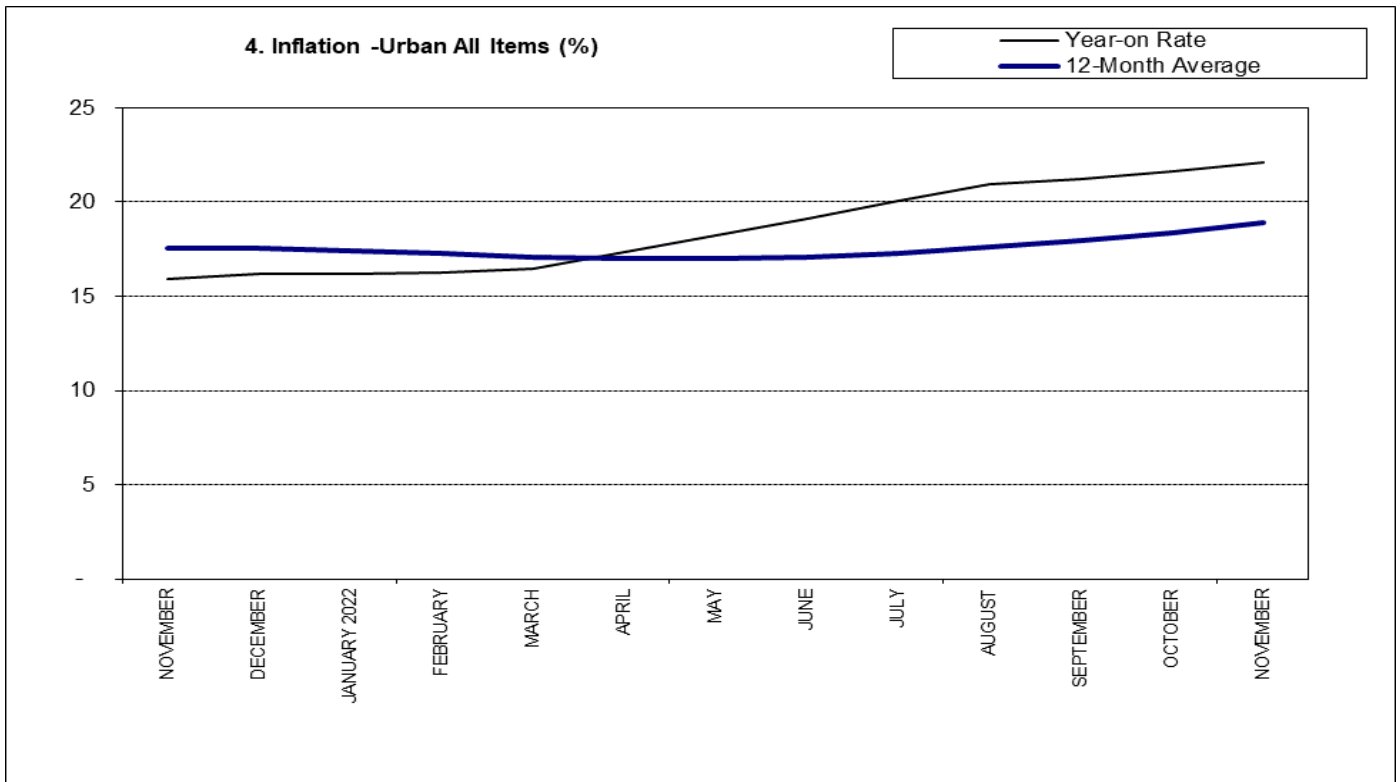
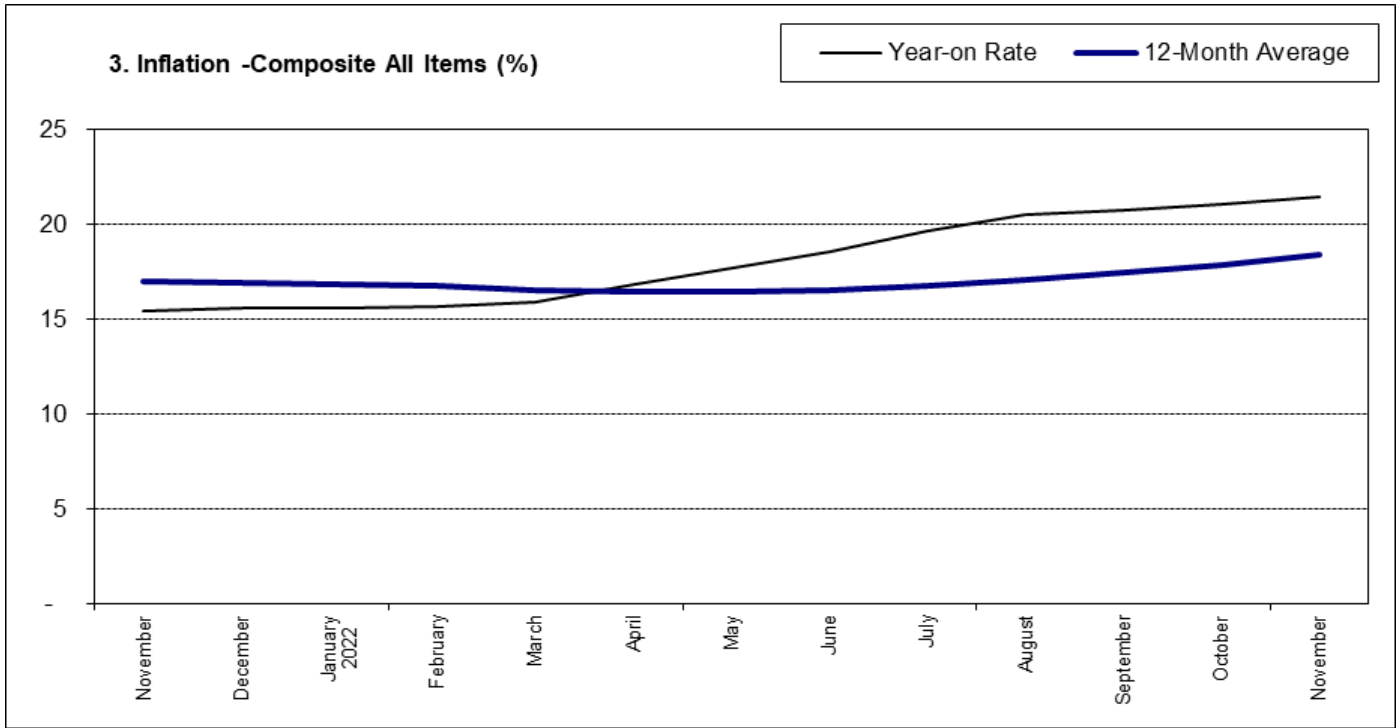
(FROM 14.89% IN NOVEMBER 2021)

1.30%

MONTH-ON-MONTH

(FROM 1.16% IN OCTOBER 2022)



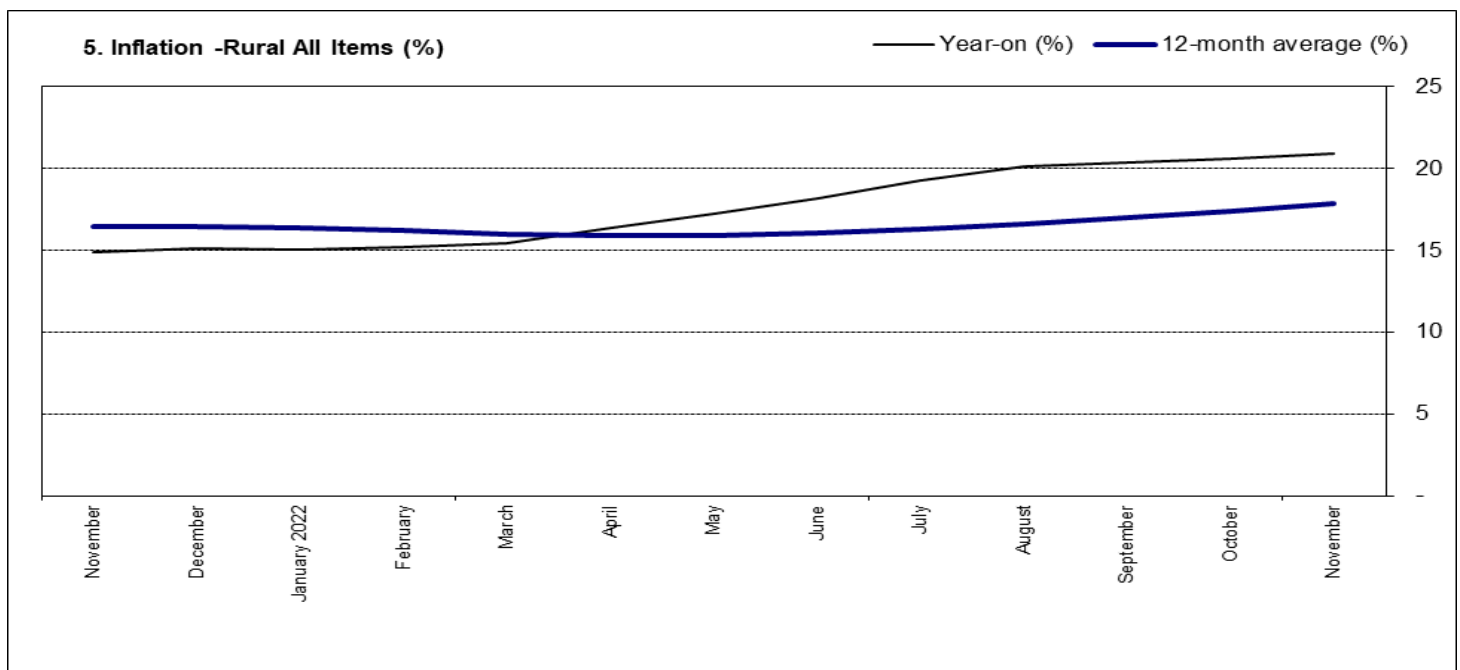


FOOD INDEX

The food inflation rate in November 2022 was 24.13% on a year-on-year basis; which was 6.92% higher compared to the rate recorded in November 2021 (17.21%). The rise in food inflation was caused by increases in prices of Bread and cereals, Oil and fat, Potatoes, Yam and other tubers, Food products n.e.c, Fish.

On a month-on-month basis, the food inflation rate in November was 1.40%, this was 0.17% higher compared to the rate recorded in October 2022 (1.23%). This increase was attributed to an increase in prices of some food items like Oil and fat, Fruits, Fish, and Tubers

The average annual rate of food inflation for the twelve-month period ending November 2022 over the previous twelve-month average was 20.41%, which was 0.21% points lower from the average annual rate of change recorded in November 2021 (20.62%).





NATIONAL BUREAU OF STATISTICS

FOOD SUB-INDEX IN NOVEMBER 2022 ROSE BY

24.13%

YEAR-ON-YEAR

(FROM 17.21% IN NOVEMBER 2021)

1.40%

MONTH-ON-MONTH

(FROM 1.23% IN OCTOBER 2022)

CORE SUB-INDEX IN NOVEMBER 2022 ROSE BY

18.24%

YEAR-ON-YEAR

(FROM 13.85% IN NOVEMBER 2021)

1.67%

MONTH-ON-MONTH

(FROM 0.93% IN OCTOBER 2022)

ALL ITEMS LESS FARM PRODUCE

The “All items less farm produce” or Core inflation, which excludes the prices of volatile agricultural produce stood at 18.24% in November 2022 on a year-on-year basis; up by 4.39% when compared to 13.85% recorded in November 2021.

On a month-on-month basis, the core inflation rate was 1.67% in November 2022. It stood at 0.93% in October 2022, up by 0.74%.

The highest increases were recorded in prices of Gas, Liquid fuel, Passenger transport by Air, Vehicles spare parts, Solid fuel.

The average 12-month annual inflation rate was 15.69% for the twelve-month period ending November 2022; this was 2.73% points higher than the 12.96% recorded in November 2021.

STATE PROFILES

In analysing price movements under this section, it should be noted that CPI is weighted by consumption expenditure patterns which differ across states and locations. Accordingly, the weight assigned to a particular food or non-food item may differ from state to state making interstate comparisons of consumption baskets inadvisable and potentially misleading.

All Items Inflation

In November 2022, all items inflation rate on a year-on-year basis was highest in Ebonyi (26.11%), Kogi (25.84%), Rivers (24.45%), while Kaduna (18.87%), Sokoto (19.02%) and Cross river (19.17%) recorded the slowest rise in headline Year-on-Year inflation.

On a month-on-month basis, however, November 2022 recorded the highest increases in Ebonyi (3.16%), Niger (2.70%), Plateau (2.44%), while Ogun (-0.17%), Abuja (-0.12%) and Sokoto (0.25%) recorded the slowest rise on month-on-month inflation.

Food Inflation

In November 2022, food inflation on a year-on-year basis was highest in Kwara (29.74%), Kogi (29.51%), and Ebonyi (28.25%), while Kaduna (19.30%), Sokoto (19.48%) and Jigawa (20.55%) recorded the slowest rise in year-on-year food inflation.

On a month-on-month basis, however, November 2022 food inflation was highest in Nasarawa (2.87%), Delta (2.66%), and Plateau (2.53%), while Sokoto (-0.94%), Ogun (-0.34%) and Yobe (-0.10%) recorded the slowest rise on month-on-month inflation.

ALL ITEMS INFLATION

YEAR-ON-YEAR

HIGHEST RISE IN

EBONYI	▶	26.11%
KOGI	▶	25.84%
RIVERS	▶	24.45%

SLOWEST RISE IN

KADUNA	▶	18.87%
SOKOTO	▶	19.02%
CROSS RIVER	▶	19.17%

MONTH-ON-MONTH

HIGHEST RISE IN

EBONYI	▶	3.16%
NIGER	▶	2.70%
PLATEAU	▶	2.44%

SLOWEST RISE IN

OGUN	▶	-0.17%
FCT	▶	-0.12%
SOKOTO	▶	0.25%

FOOD INFLATION

YEAR-ON-YEAR

HIGHEST RISE IN

KWARA	▶	29.74%
KOGI	▶	29.51%
EBONYI	▶	28.25%

SLOWEST RISE IN

KADUNA	▶	19.30%
SOKOTO	▶	19.48%
JIGAWA	▶	20.55%

MONTH-ON-MONTH

HIGHEST RISE IN

NASARAWA	▶	2.87%
DELTA	▶	2.66%
PLATEAU	▶	2.53%

SLOWEST RISE IN

SOKOTO	▶	-0.94%
OGUN	▶	-0.34%
YOBE	▶	-0.10%

APPENDIX

Table 1 Composite Consumer Price Index (Base November 2009 = 100)

		All Items Index					All Items less Farm Pro-					Food				
		Month-ly	12-Month Average	Month-on change (%)	Year-on change (%)	12-Month average change (%)	Month-ly	12-Month Average	Month-on change (%)	Year-on change (%)	12-Month average change (%)	Month-ly	12-Month Average	Month-on change (%)	Year-on change (%)	12-Month average change (%)
<i>Weights</i>		1000.00					513.10					507.06				
	November	404.2	381.3	1.08	15.40	16.98	352.0	332.3	1.26	13.85	12.96	466.7	439.4	1.07	17.21	20.62
	December	411.5	385.9	1.82	15.63	16.95	355.9	335.9	1.12	13.87	13.16	477.0	445.3	2.19	17.37	20.40
2022	January	417.6	390.6	1.47	15.60	16.87	360.4	339.6	1.25	13.87	13.33	484.7	451.2	1.62	17.13	20.09
	February	424.4	395.4	1.63	15.70	16.73	365.2	343.3	1.33	14.01	13.46	493.8	457.2	1.87	17.11	19.69
	March	431.8	400.4	1.74	15.92	16.54	368.8	347.1	0.98	13.91	13.56	503.6	463.3	1.99	17.20	19.21
	April	439.4	405.6	1.76	16.82	16.45	373.3	350.9	1.22	14.18	13.68	513.6	470.0	2.00	18.37	18.88
	May	447.2	411.2	1.78	17.71	16.45	380.3	355.0	1.87	14.90	13.83	524.0	477.1	2.01	19.50	18.68
	June	455.4	417.2	1.82	18.60	16.54	386.2	359.4	1.56	15.75	14.06	534.7	484.7	2.05	20.60	18.62
	July	463.6	423.5	1.82	19.64	16.75	393.0	364.0	1.75	16.26	14.28	545.6	492.9	2.04	22.02	18.75
	August	471.8	430.2	1.77	20.52	17.07	399.2	368.9	1.59	17.20	14.60	556.4	501.6	1.98	23.12	19.02
	September	478.2	437.1	1.36	20.77	17.43	405.5	373.9	1.59	17.60	14.93	564.4	510.5	1.43	23.34	19.36
	October	484.2	444.1	1.24	21.09	17.86	409.3	379.1	0.93	17.76	15.31	571.3	519.6	1.23	23.72	19.83
	November	490.9	451.3	1.39	21.47	18.37	416.2	384.4	1.67	18.24	15.69	579.3	529.0	1.40	24.13	20.41

Table 2 Composite Consumer Price Index (Base November 2009 = 100)

		All Items	All Items less Farm Produce.	All Items less Farm Produce and Energy	Imported Food	Food	Food & Non-Alcoholic Bev.	Alcoholic Beverage, Tobacco and Kola	Clothing and Footwear	Housing, Water, Electricity, Gas and Other Fuel	Furnishings & Household Equipment Maintenance.	Health.	Transport	Communication	Recreation & Culture.	Education	Restaurants & Hotels	Miscellaneous Goods & Services	Month-on (%)	Year-on (%)	12-month average (%)
Weights		1000.0	513.10	405.55	132.88	507.06	518.00	10.87	76.50	167.34	50.30	30.04	65.08	6.80	6.87	39.44	12.12	16.63			
	November	404.2	352.0	344.7	450.4	466.7	463.4	296.9	368.2	352.1	325.6	320.4	358.5	196.8	264.2	319.1	277.9	322.8	1.1	15.40	17.0
	December	411.5	355.9	348.4	456.5	477.0	473.5	301.3	373.3	356.7	329.6	324.3	363.0	198.5	267.6	322.9	281.1	326.8	1.8	15.63	17.0
2022	January	417.6	360.4	352.7	462.8	484.7	481.2	305.7	378.6	361.0	333.6	328.3	367.6	200.2	271.1	326.8	284.5	330.9	1.5	15.60	16.9
	February	424.4	365.2	357.5	469.3	493.8	490.2	310.3	384.0	365.4	337.8	332.4	372.4	202.0	274.7	330.9	288.0	335.2	1.6	15.70	16.7
	March	431.8	368.8	360.5	475.8	503.6	499.9	315.1	389.7	370.4	342.3	336.8	377.9	203.8	278.3	335.4	291.7	339.7	1.7	15.92	16.5
	April	439.4	373.3	364.6	482.5	513.6	509.8	320.2	395.6	375.5	347.0	341.3	383.7	205.8	282.1	339.9	295.5	344.4	1.76	16.82	16.4
	May	447.2	380.3	371.8	489.2	524.0	520.1	325.4	401.6	380.7	351.9	346.1	389.7	207.8	286.1	344.8	299.3	349.2	1.78	17.71	16.4
	June	455.4	386.2	377.6	496.2	534.7	530.7	330.9	407.8	386.1	357.0	351.0	396.0	210.0	290.2	349.8	303.3	354.3	1.82	18.60	16.5
	July	463.6	393.0	384.3	503.1	545.6	541.5	336.4	414.2	391.6	362.1	356.0	402.4	212.2	294.3	355.0	307.3	359.4	1.82	19.64	16.8
	August	471.8	399.2	390.5	510.1	556.4	552.2	341.7	420.5	397.0	367.3	361.0	409.1	214.4	298.4	360.1	311.4	364.5	1.77	20.52	17.1
	September	478.2	405.5	396.9	517.2	564.4	560.1	344.8	423.9	402.2	371.3	366.4	415.4	216.3	302.5	365.0	316.0	369.9	1.36	20.77	17.4
	October	484.2	409.3	400.0	524.7	571.3	566.9	347.9	427.9	407.4	376.0	372.1	421.5	218.3	306.6	370.2	320.0	375.3	1.24	21.09	17.9
	November	490.9	416.2	406.7	532.5	579.3	574.8	351.7	433.2	413.1	380.7	377.6	428.6	219.5	308.1	376.2	324.3	381.3	1.39	21.47	18.4

Table 3 Urban Consumer Price Index (Base November 2009 = 100)

	All Items	All Items less Farm Produce.	All Items less Farm Produce and Energy	Imported Food	Food	Food & Non-Alcoholic Bev.	Alcoholic Beverage, Tobacco and Kola	Clothing and Footwear	Housing Water, Electricity, Gas and Other Fuel	Furnishings & Household Equipment Maintenance.	Health.	Transport	Communication	Recreation & Culture.	Education	Restaurants & Hotels	Miscellaneous Goods & Services	Month-on (%)	Year-on (%)	12-month average (%)
Weights	1000.0	552.64	418.67	155.45	476.88	490.59	11.19	65.50	191.51	49.81	27.40	74.54	10.14	7.14	40.05	14.49	17.65			
November	416.1	362.4	354.0	460.2	482.4	477.9	296.3	384.4	369.5	335.1	332.9	391.2	200.0	278.6	327.8	292.6	338.8	1.12	15.92	17.55
December	423.8	366.8	358.1	466.5	493.7	489.0	300.9	389.9	374.1	339.3	337.0	396.4	201.8	282.3	331.8	296.1	343.2	1.87	16.17	17.52
2022 January	430.3	371.1	362.1	473.0	502.3	497.5	305.6	395.4	378.4	343.7	341.2	401.6	203.7	286.1	336.0	299.8	347.9	1.53	16.17	17.44
February	437.4	376.4	367.4	479.7	512.0	507.1	310.4	401.1	382.9	348.2	345.6	407.2	205.6	289.9	340.3	303.5	352.8	1.65	16.25	17.29
March	445.1	381.6	372.3	486.5	522.5	517.4	315.4	407.2	387.9	353.0	350.3	413.6	207.7	293.8	345.1	307.5	357.9	1.76	16.44	17.10
April	453.1	386.4	376.9	493.6	533.3	528.0	320.7	413.5	393.0	358.1	355.2	420.3	209.8	297.9	349.9	311.5	363.1	1.78	17.35	17.01
May	461.3	393.8	384.4	500.7	544.4	539.0	326.1	420.0	398.2	363.3	360.3	427.3	212.1	302.2	355.2	315.7	368.5	1.81	18.24	17.00
June	469.7	399.2	389.6	507.9	555.8	550.2	331.6	426.6	403.5	368.7	365.4	434.5	214.4	306.6	360.5	320.0	373.9	1.82	19.09	17.09
July	478.2	406.7	396.9	515.0	567.4	561.7	337.2	433.3	408.9	374.2	370.7	441.9	216.7	311.0	365.9	324.3	379.5	1.82	20.09	17.29
August	486.8	412.5	402.2	522.3	578.9	573.1	342.9	440.2	414.4	379.7	376.0	449.4	219.0	315.6	371.4	328.7	385.2	1.79	20.95	17.59
September	493.9	419.6	409.6	529.7	587.9	582.0	346.1	443.9	419.6	384.2	382.2	457.2	221.2	320.2	376.6	333.9	391.3	1.46	21.25	17.94
October	500.5	425.2	414.7	537.4	595.7	589.6	349.5	448.4	424.9	389.6	388.8	465.1	223.4	324.6	382.1	338.5	397.5	1.33	21.63	18.38
November	508.0	433.4	423.2	545.6	604.7	598.4	353.5	454.4	430.7	395.2	395.3	474.0	224.8	326.2	389.4	343.5	404.3	1.50	22.09	18.90

Table 4 Rural Consumer Price Index (Base November 2009 = 100)

	All Items	All Items less Farm Produce.	All Items less Farm Produce and Energy	Imported Food	Food	Food & Non Alcoholic Bev.	Alcoholic Beverage. Tobacco and Kola	Clothing and Footwear	Housing Water, Electricity. Gas and Other Fuel	Furnishings & Household Equipment Maintenance.	Health	Transport	Communication	Recreation & Culture.	Education	Restaurant & Hotels	Miscellaneous Goods & Services	Month-on (%)	Year-on (%)	12-month average (%)
Weights	1000.00	480.09	394.61	114.03	532.25	540.89	10.61	85.68	147.16	50.72	32.25	57.19	4.01	6.65	38.93	10.14	15.78			
	394.0	343.3	337.0	442.2	454.1	451.7	298.5	353.5	335.7	318.6	310.4	323.3	192.1	251.8	311.9	265.7	309.6	1.04	14.89	16.42
	401.0	346.8	340.3	448.2	463.6	461.0	302.8	358.3	340.3	322.3	314.0	327.1	193.7	254.9	315.5	268.7	313.2	1.77	15.11	16.40
2022	406.7	351.5	344.9	454.3	470.6	468.0	307.1	363.3	344.6	326.1	317.8	331.1	195.3	258.2	319.2	271.9	316.9	1.42	15.06	16.31
January	413.2	355.8	349.2	460.6	479.1	476.5	311.5	368.4	349.1	330.0	321.7	335.2	196.9	261.5	323.0	275.2	320.6	1.61	15.18	16.18
February	420.3	358.0	350.6	466.9	488.4	485.7	316.2	373.8	354.1	334.3	325.8	340.0	198.5	265.0	327.3	278.6	324.7	1.73	15.42	16.00
March	427.7	362.2	354.4	473.2	497.9	495.1	321.1	379.3	359.3	338.8	330.0	344.8	200.2	268.5	331.6	282.2	328.9	1.74	16.32	15.91
April	435.2	368.9	361.3	479.7	507.6	504.7	326.2	385.0	364.6	343.4	334.5	349.8	202.1	272.2	336.1	285.8	333.2	1.76	17.21	15.91
May	443.0	375.3	367.7	486.4	517.8	514.8	331.6	390.9	370.0	348.2	339.2	355.3	204.1	276.1	340.9	289.5	337.9	1.81	18.13	16.02
June	451.1	381.4	373.8	493.1	528.2	525.1	337.0	396.9	375.6	353.1	344.0	360.8	206.1	279.9	345.8	293.3	342.7	1.81	19.22	16.25
July	458.9	388.1	380.6	499.9	538.3	535.2	342.2	402.7	381.1	358.0	348.7	366.5	208.1	283.7	350.6	297.0	347.3	1.75	20.12	16.58
August	464.8	393.8	386.2	506.8	545.4	542.3	345.0	405.8	386.2	361.5	353.5	371.6	209.8	287.4	355.4	301.2	352.2	1.27	20.32	16.94
September	470.2	396.1	387.7	514.0	551.6	548.4	347.8	409.4	391.4	365.7	358.6	376.3	211.5	291.1	360.2	304.7	356.8	1.16	20.57	17.38
October	476.3	401.8	393.0	521.5	558.8	555.5	351.5	414.0	397.1	369.7	363.3	381.6	212.5	292.5	365.1	308.5	362.2	1.30	20.88	17.88
November																				

Table 5 Combined Urban And Rural State Consumer Price Index (Base Period: November 2009 = 100)

State	Sep-21		Aug-22		Sep-22		MoM		YoY	
	Food	All	Food	All	Food	All	Food	All Items	Food	All Items
		Items		Items		Items				
Abia	459.0	401.7	565.2	485.2	572.5	493.2	1.30	1.66	24.73	22.80
Abuja	459.8	395.1	564.8	472.6	569.3	472.0	0.79	- 0.12	23.81	19.46
Adamawa	454.1	392.1	552.0	464.8	564.4	474.2	2.26	2.02	24.28	20.95
Akwa Ibom	459.9	397.8	572.4	481.9	579.4	490.0	1.21	1.66	25.98	23.16
Anambra	466.0	413.4	560.3	498.7	571.0	510.0	1.90	2.28	22.53	23.37
Bauchi	413.4	464.6	498.7	572.9	510.0	576.7	2.28	0.67	23.37	24.15
Bayelsa	466.7	405.3	583.2	493.9	593.3	504.0	1.74	2.04	27.13	24.34
Benue	469.7	404.8	574.4	482.7	585.8	487.4	1.99	0.98	24.72	20.41
Borno	460.1	386.9	562.9	456.9	569.8	462.5	1.23	1.21	23.85	19.53
Cross River	474.1	380.5	583.3	447.7	592.1	453.4	1.51	1.28	24.89	19.17
Delta	472.3	383.3	573.8	456.7	589.1	465.1	2.66	1.84	24.72	21.34
Ebonyi	479.4	411.0	601.7	502.4	614.8	518.3	2.18	3.16	28.25	26.11
Edo	465.3	413.5	579.3	497.0	588.3	502.8	1.55	1.16	26.43	21.59
Ekiti	472.7	378.7	579.3	449.2	591.5	457.3	2.12	1.80	25.14	20.74
Enugu	479.0	385.8	582.0	456.8	589.8	465.0	1.34	1.79	23.13	20.52
Gombe	469.2	412.9	568.1	490.5	577.6	501.7	1.68	2.29	23.12	21.52
Imo	465.0	369.3	584.7	441.2	591.9	446.7	1.24	1.25	27.30	20.95
Jigawa	461.4	411.9	554.1	492.8	556.2	495.5	0.37	0.56	20.55	20.30
Kaduna	479.5	425.1	567.4	500.6	572.0	505.3	0.81	0.94	19.30	18.87
Kano	473.6	417.8	576.1	500.0	581.5	508.4	0.93	1.69	22.78	21.68
Katsina	452.5	371.6	549.7	441.1	555.3	447.6	1.02	1.48	22.73	20.46
Kebbi	472.5	432.0	585.1	527.6	588.0	532.1	0.50	0.84	24.45	23.17
Kogi	506.7	444.3	644.6	548.4	656.2	559.0	1.81	1.95	29.51	25.84
Kwara	484.2	470.5	623.2	561.6	628.2	565.6	0.80	0.70	29.74	20.20
Lagos	478.3	419.7	593.5	505.3	604.6	512.0	1.88	1.32	26.41	21.99
Nassarawa	470.5	414.9	565.1	492.2	581.3	503.8	2.87	2.36	23.55	21.44
Niger	462.0	414.0	567.2	500.1	580.6	513.6	2.37	2.70	25.67	24.04
Ogun	472.1	428.7	594.4	518.8	592.4	517.9	- 0.34	- 0.17	25.48	20.80
Ondo	471.8	415.9	592.8	508.0	600.3	515.7	1.27	1.52	27.23	24.00
Osun	465.7	401.7	573.9	481.3	582.6	485.5	1.53	0.88	25.10	20.86
Oyo	479.0	430.3	575.7	511.7	588.4	518.1	2.21	1.25	22.83	20.41
Plateau	472.5	420.4	562.6	496.3	576.8	508.4	2.53	2.44	22.08	20.94
Rivers	463.4	399.2	576.9	488.3	585.1	496.9	1.42	1.76	26.28	24.45
Sokoto	471.7	411.7	569.0	488.8	563.6	490.0	- 0.94	0.25	19.48	19.02
Taraba	461.7	396.0	559.1	470.1	564.4	475.3	0.96	1.09	22.25	20.01
Yobe	469.2	418.1	575.8	503.3	575.3	507.2	- 0.10	0.77	22.61	21.32
Zamfara	470.3	419.0	564.7	498.4	575.9	509.0	1.98	2.12	22.44	21.48

Note: Indices may not be used for inter-state price comparison because market baskets differ from state to state

CONTACT



National Bureau of Statistics

Head Office

Plot 762 Independence Avenue,
Central Business District, Garki
Abuja.

Sunday J. Ichedi

Information Desk

Head, Communication & Public
Relations Department (C&PRD)
Phone: +2348037051701
sjichedi@nigerianstat.gov.ng

Moses Mathew

Statistical Information Officer

Phone: +2347069071157
matmoses@nigerianstat.gov.ng

Nuhu Joseph Waney II

Chief of Protocol

Phone: +2348037020063
jwnuhu@nigerianstat.gov.ng



@nbsnigeria



NBSNigeria



Nbs_nigeria

