



NATIONAL BUREAU OF STATISTICS

Consumer Price Index

September 2022

(BASE PERIOD NOVEMBER 2009 = 100)

Report Date: October 2022

Data Source: National Bureau of Statistics (NBS)

CONTENT

Brief Methodology	3
All Item Index	7
Food Index	13
All Items Less Farm Produce	15
State Profile	16
Appendix	19
Contact	24

BRIEF METHODOLOGY

The CPI measures the average change over time in the prices of goods and services consumed by people for day-to-day living. The construction of the CPI combines economic theory, sampling, and other statistical techniques using data from other surveys to produce a weighted measure of average price changes in the Nigerian economy. The weighting occurs to capture the importance of the selected commodities in the entire index. The production of the CPI requires the skills of economists, statisticians, computer scientists, data collectors, and others.

Key in the construction of the price index is the selection of the market basket of goods and services. Every month, 10,534 informants spread across the country provide price data for the computation of the CPI. The market items currently comprise 740 goods and services regularly priced. The first stage in the calculation of the CPI is the collection of prices on each item (740 goods and services) from outlets in each sector (rural or urban) for each state. Prices are then averaged for each item per sector across the state. The next step is to use the average price to calculate the basic index for each commodity: The current year price of each commodity is compared with a base year's price to obtain a relative price.

Next, we use the Laspeyres formula to compute an aggregated index for each class (which has a multitude of commodities that have similar consumption purposes): Here the sum of the product of weights (obtained from the expenditure survey) and relative prices for each item is divided by the sum of the weight of the items in that class, and the result multiplied by 100 gives the required index number. This index number is still classified according to the urban and rural sectors for each of the 36 states and the FCT. This yields 85 classes then 48 groups which are then reclassified into 12 Divisions to derive:

1. The Country Composite Index
2. The Urban National Index
3. The Rural National Index
4. The Combined Urban and Rural State Composite Index

The survey methodology generates 3774 all-items indices for all states and the FCT.

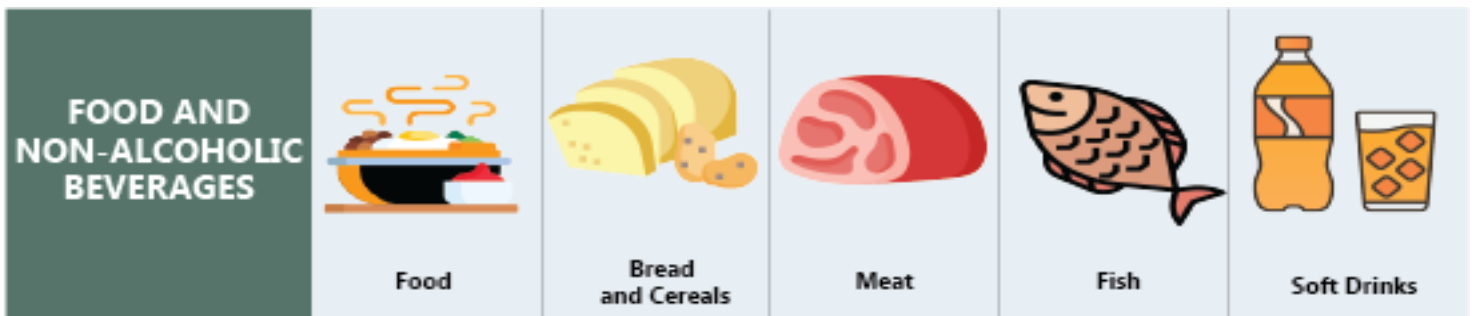
This edition of the Statistical News contains the revised Consumer Price Index (CPI) based on Nigeria Living Standard Survey (NLSS) 2003/2004. The consumption expenditure data were re-valued to November 2009, which is the base period for the revised CPI.

The May 2003 and September 1985-based indices are being continued using factors derived from the new CPI. These indices will yield the same price change for any commodity group contained in all the series.

A new sub-index Imported Food Index- is available in the revised CPI.

Note: The urban and rural indices were weighted with the ratio of their populations to the national i.e., 0.455 and 0.545 respectively to compute the composite indices at the 12 Classification of Individual Consumption by Purpose (COICOP) functions and all-items levels. This may cause a variance between a recalculated all items index using the weights and the All-Items index published because the weights were computed only from the consumption expenditure survey result.

The following breakdown highlights a non-exhaustive list of the components of the current CPI:



HOUSING, WATER, ELECTRICITY AND GAS



Actual and imputed rentals for housing



Water supply



Liquid fuel



Electricity



Gas

FURNISHINGS, HOUSEHOLD EQUIPMENT



Furniture and furnishings



Household textiles



Repair of household appliances



Carpets and other floor coverings



Non-durable household goods

HEALTH



Pharmaceutical products



Medical services



Dental services



Hospital services



Paramedical services

TRANSPORT



Motor cars



Motor cycles



Passenger transport by air



Passenger transport by road



Passenger transport by sea and inland waterways

COMMUNICATION



Postal services



Telephone and telefax equipment



Telephone and telefax services

RECREATION AND CULTURE



Photographic development



Musical instrument



Recreational and sporting services



Games of chance



Audio-visual, photographic and information processing equipment

EDUCATION



Books & stationery

RESTAURANTS AND HOTELS



Accommodation services



Catering services

MISCELLANEOUS GOODS AND SERVICES



Hairdressing salons and personal grooming establishments



Jewellery, clocks and watches



Appliances, articles and products for personal care



Insurance



Other services

ALL ITEMS INDEX

In September 2022, on a year-on-year basis, the headline inflation rate was 20.77%. This was 4.14% points higher compared to the rate recorded in September 2021, which was (16.63%). This indicates that in the month of September 2022 the general price level was 4.14% higher relative to September 2021.

On a month-on-month basis, the Headline inflation rate in September 2022 was 1.36%, this was 0.41% lower than the rate recorded in August 2022 (1.77%). This means that in the month of September 2022, the headline inflation rate (month-on-month basis) declined by 0.41%, relative to August 2022.

The percentage change in the average CPI for the twelve month period ending September 2022 over the average of the CPI for the previous twelve month period was 17.43%, showing a 0.60% increase compared to 16.83% recorded in September 2021.

The Increases were recorded in all COICOP divisions that yielded the Headline index.

LIKELY FACTORS RESPONSIBLE FOR THE DECLINE IN THE MONTHLY INFLATION RATE (Month-on-month basis).

Over the past two months, there has been a decline in headline inflation on a month-on-month basis due to a decline in the changes in the food index relative to the reference month index which is due to the present harvest season.

LIKELY FACTORS RESPONSIBLE FOR THE INCREASE IN ANNUAL INFLATION RATE (Year-on-Year basis).

1. Disruption in the supply of food products
2. Increase in import cost due to the persistent currency depreciation
3. General increase in the cost of production.

URBAN INFLATION

On a year-on-year basis, in the month of September 2022, the urban inflation rate was 21.25 %, which was 4.06% higher compared to the 17.19% recorded in September 2021. On a month-on-month basis, the urban inflation rate was 1.46% in September 2022, this was a 0.34% decline compared to August 2022 (1.79%). The corresponding twelve-month average for the urban inflation rate was 17.94% in September 2022. This was 0.53% higher compared to the 17.41% reported in September 2021.

RURAL INFLATION

The rural inflation rate in September 2022 was 20.32% on a year-on-year basis; this was 4.24% higher compared to 16.08% recorded in September 2021. On a month-on-month basis, the rural inflation rate in September 2022 was 1.27%, down by 0.48% compared to August 2022 (1.75%). The corresponding twelve-month average for the rural inflation rate in September 2022 was 16.94%. This was 0.68% higher compared to the 16.26% recorded in September 2021



NATIONAL BUREAU OF STATISTICS

HEADLINE CPI IN SEPTEMBER 2022 ROSE BY

20.77%

YEAR-ON-YEAR

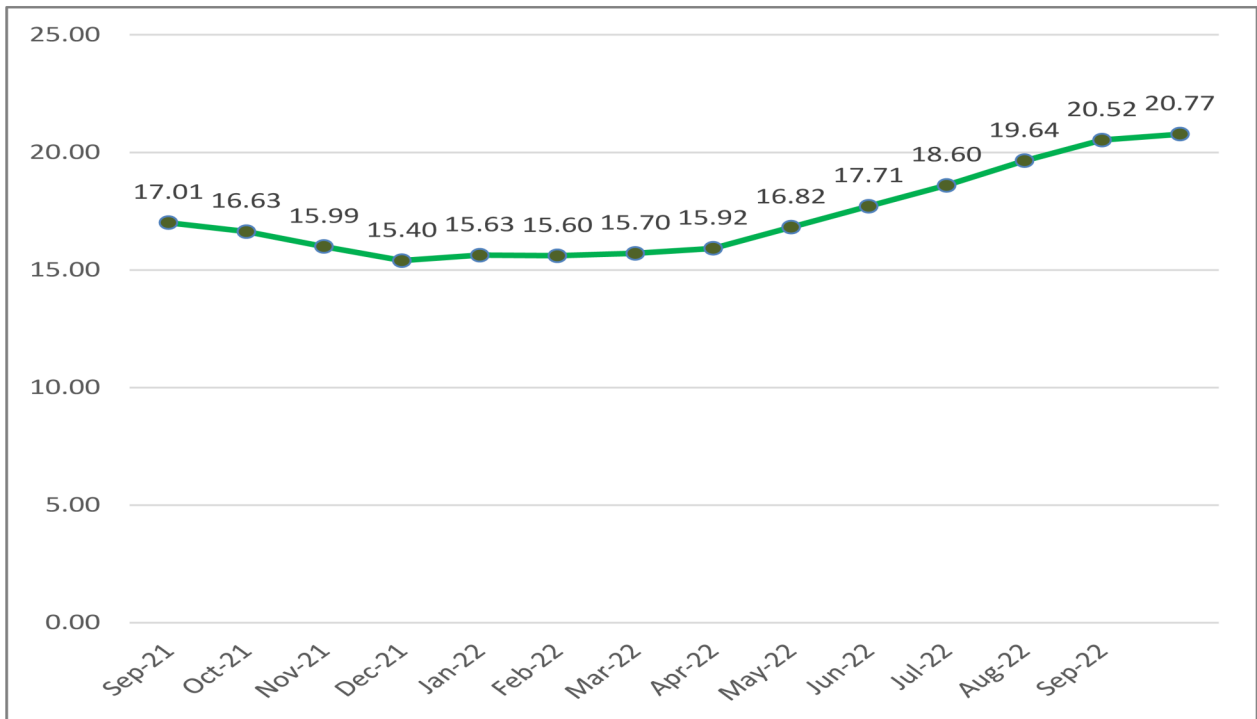
(FROM 16.63% IN SEPTEMBER 2021)

1.36%

MONTH-ON-MONTH

(FROM 1.77% IN AUGUST 2022)

CPI (%) HEADLINE 12-MONTH SERIES



The CPI (Consumer Price Index) measures the average change over time in prices of goods and services consumed by people for day-to-day living i.e it measures the inflation rate



NATIONAL BUREAU OF STATISTICS

URBAN

21.25%

YEAR-ON-YEAR

(FROM 17.19% IN SEPTEMBER 2021)

1.46%

MONTH-ON-MONTH

(FROM 1.79% IN AUGUST 2022)



URBAN AND RURAL INDEX



RURAL

20.32%

YEAR-ON-YEAR

(FROM 16.08% IN SEPTEMBER 2021)

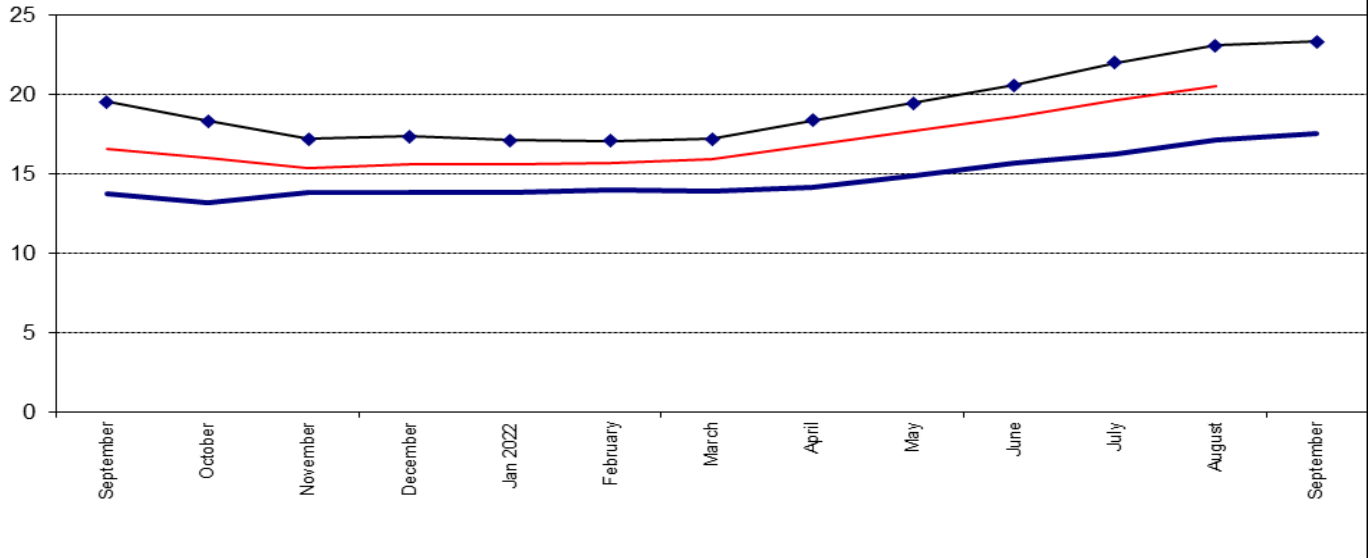
1.27%

MONTH-ON-MONTH

(FROM 1.75% IN AUGUST 2022)

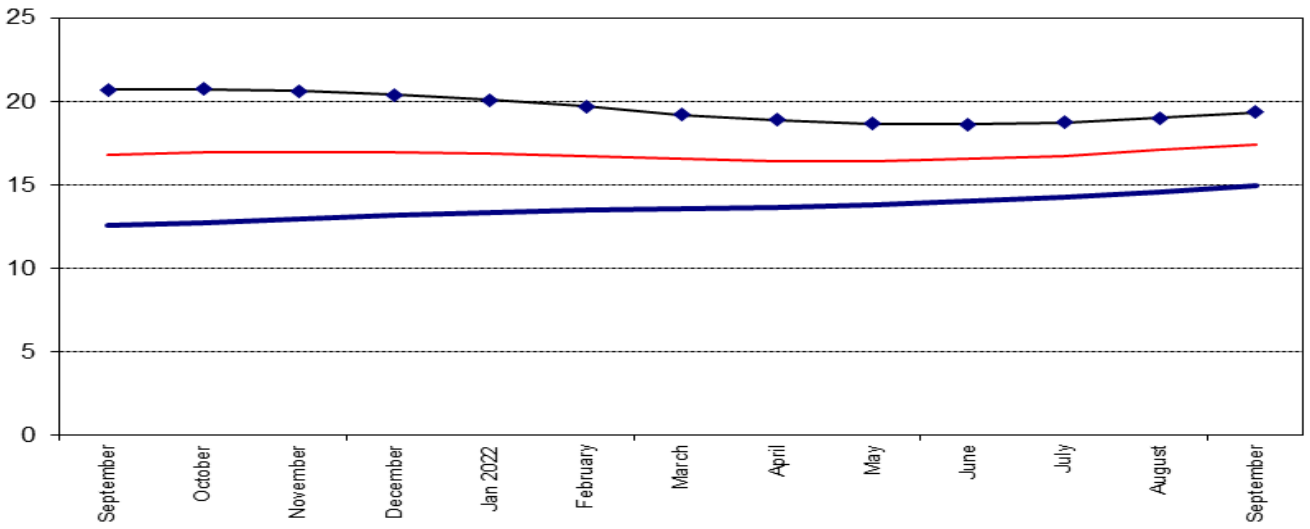
1. Inflation: Composite Year-on Change (%)

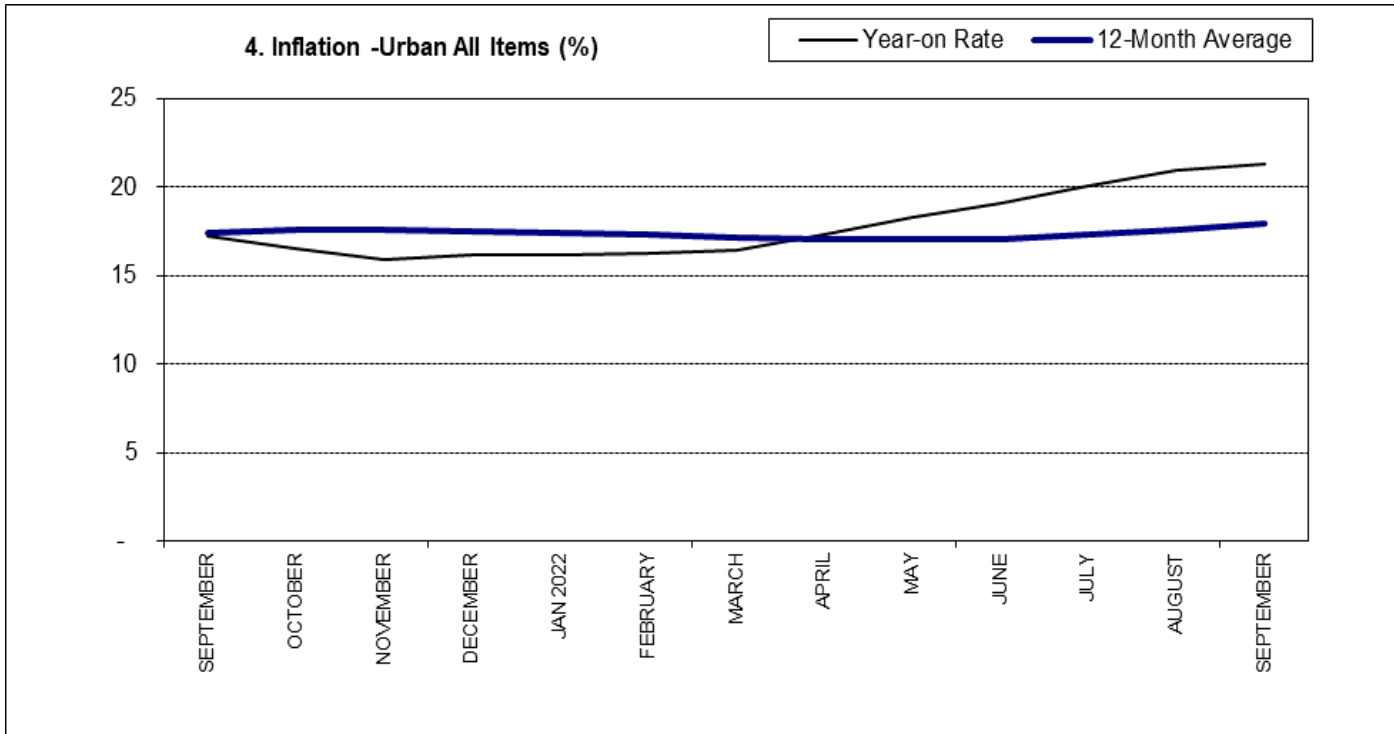
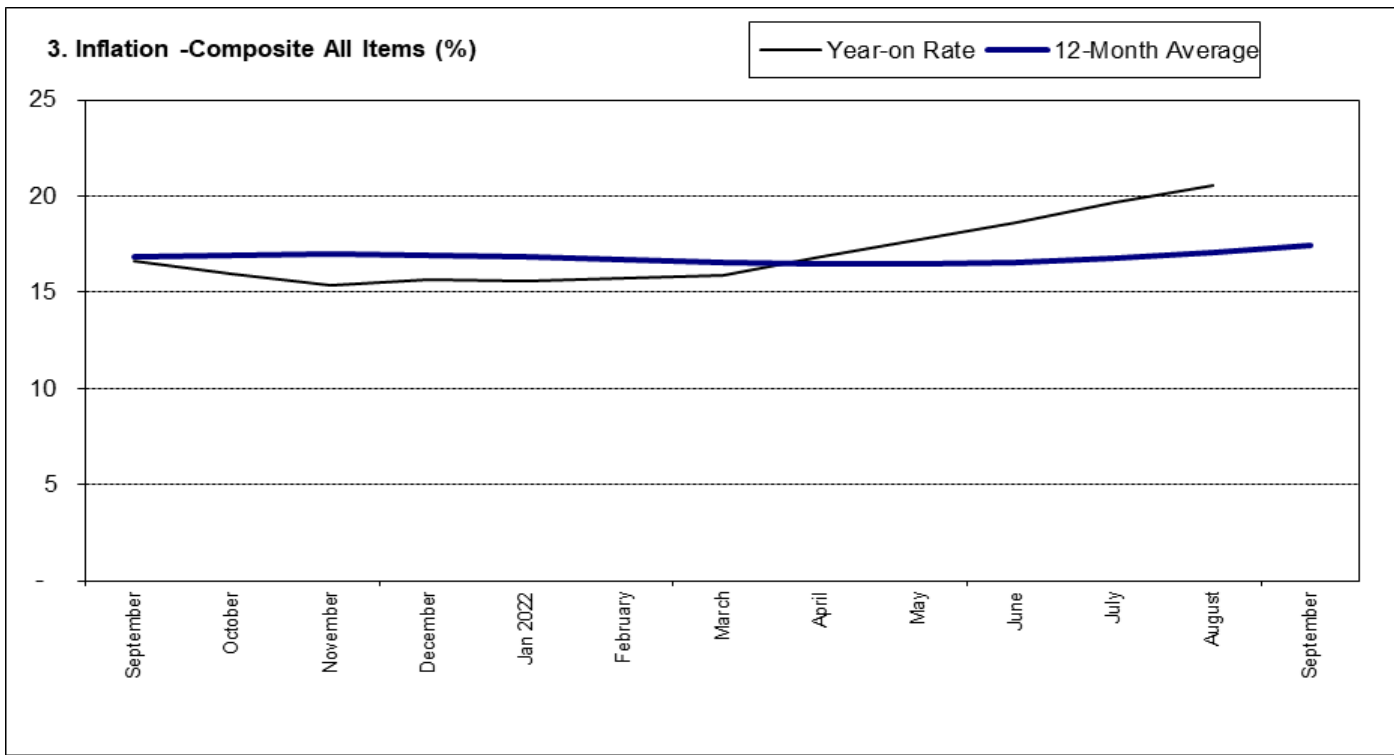
◆ Food ■ All Items less Farm Produce — All Items



2. Inflation: Composite 12-Month Average Change (%)

◆ Food ■ All Items less Farm Produce — All Items



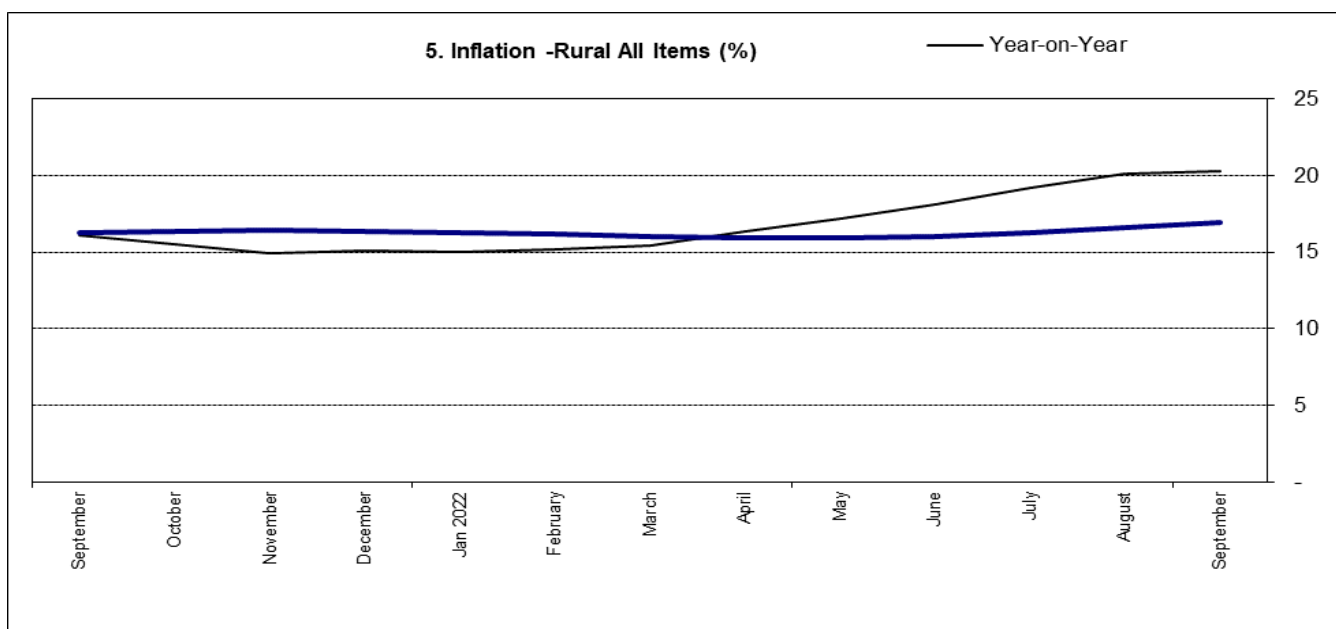


FOOD INDEX

The food inflation rate in September 2022 was 23.34% on a year-on-year basis; which was 3.77% higher compared to the rate recorded in September 2021 (19.57%). This rise in food inflation was caused by increases in prices of Bread and cereals, Food products n.e.c, Potatoes, yam, and other tuber, oil, and fat.

On a month-on-month basis, the food inflation rate in September was 1.43%, this was a 0.54% fall compared to the rate recorded in August 2022 (1.98%). This decline was attributed to a reduction in prices of some food items like Tubers, Palm oil, Maize, Beans, and Vegetables.

The average annual rate of food inflation for the twelve-month period ending September 2022 over the previous twelve-month average was 19.36%, which was a decline of 1.35% points from the average annual rate of change recorded in September 2021 (20.71%).





NATIONAL BUREAU OF STATISTICS

FOOD SUB-INDEX IN SEPTEMBER 2022 ROSE BY

23.34%

YEAR-ON-YEAR
(FROM 19.57% IN SEPTEMBER 2021)

1.43%

MONTH-ON-MONTH
(FROM 1.98% IN AUGUST 2022)

CORE SUB-INDEX IN SEPTEMBER 2022 ROSE BY

17.60%

YEAR-ON-YEAR
(FROM 13.74% IN SEPTEMBER 2021)

1.59%

MONTH-ON-MONTH
(FROM 1.59% IN AUGUST 2022)

ALL ITEMS LESS FARM PRODUCE

The “All items less farm produce” or Core inflation, which excludes the prices of volatile agricultural produce stood at 17.60% in September 2022 on a year-on-year basis; up by 3.86% when compared to 13.74% recorded in September 2021.

On a month-on-month basis, the core inflation rate was 1.59% in September 2022. This was relatively the same rate recorded in August 2022.

The highest increases were recorded in prices of Gas, Liquid fuel, Passenger transport by Air, Passenger travel by road, and Solid fuel.

The average 12-month annual inflation rate was 14.93% for the twelve-month period ending September 2022; this was 2.38% points higher than the 12.55% recorded in September 2021.

STATE PROFILES

In analysing price movements under this section, it should be noted that CPI is weighted by consumption expenditure patterns which differ across states and locations. Accordingly, the weight assigned to a particular food or non-food item may differ from state to state making interstate comparisons of consumption baskets inadvisable and potentially misleading .

All Items Inflation

In September 2022, all items inflation rate on a year-on-year basis was highest in Kogi (23.82%), Rivers (23.49%), Benue (22.78%), while Abuja (17.87%), Borno (18.12%), and Adamawa (18.42%) recorded the slowest rise in headline Year-on-Year inflation.

On a month-on-month basis, however, September 2022 recorded the highest increases in Jigawa (2.58%), Yobe (2.22%), Benue (2.05%), while Abuja (-0.72%), Sokoto (-0.19%) and Adamawa (0.25%) recorded the slowest rise on month-on-month inflation.

Food Inflation

In September 2022, food inflation on a year-on-year basis was highest in Kwara (33.09%), Kogi (28.46%), and Ebonyi (27.41%), while Kaduna (18.84%), Jigawa (19.20%) and Sokoto (19.44%) recorded the slowest rise on year-on-year food inflation.

On a month-on-month basis, however, September 2022 food inflation was highest in Enugu (2.61%), Ogun (2.50%), and Oyo (2.43%), while Sokoto (-0.88%), Ondo (0.38%) and Niger (0.62%) recorded the slowest rise on month-on-month inflation.

ALL ITEMS INFLATION

YEAR-ON-YEAR

HIGHEST RISE IN

KOGI	▶	23.82%
RIVERS	▶	23.49%
BENUE	▶	22.78%

SLOWEST RISE IN

FCT	▶	17.87%
BORNO	▶	18.12%
ADAMAWA	▶	18.42%

MONTH-ON-MONTH

HIGHEST RISE IN

JIGAWA	▶	2.58%
YOBE	▶	2.22%
BENUE	▶	2.05%

SLOWEST RISE IN

FCT	▶	-0.72%
SOKOTO	▶	-0.19%
ADAMAWA	▶	0.25%

FOOD INFLATION

YEAR-ON-YEAR

HIGHEST RISE IN

KWARA	▶	33.09%
KOGI	▶	28.46%
EBONYI	▶	27.41%

SLOWEST RISE IN

KADUNA	▶	18.84%
JIGAWA	▶	19.20%
SOKOTO	▶	19.44%

MONTH-ON-MONTH

HIGHEST RISE IN

ENUGU	▶	2.61%
OGUN	▶	2.50%
OYO	▶	2.43%

SLOWEST RISE IN

SOKOTO	▶	-0.88%
ONDO	▶	0.38%
NIGER	▶	0.62%

APPENDIX

Table 1 Composite Consumer Price Index (Base November 2009 = 100)

	All Items Index	12-Month Average	Month-on-month change (%)	Year-on-year change (%)	12-Month average change (%)	All Items less Farm Produce	12-Month Average	Month-on-month change (%)	Year-on-year change (%)	12-Month average change (%)	Food	12-Month Average	Month-on-month change (%)	Year-on-year change (%)	12-Month average change (%)
Weights	1000.00					513.10					507.06				
2021	January	361.2	1.49	16.47	13.62	316.5	299.6	1.26	11.85	10.52	413.8	375.7	1.83	20.57	16.66
	February	366.8	1.54	17.33	14.05	320.3	302.6	1.21	12.38	10.77	421.6	382.0	1.89	21.79	17.25
	March	372.5	1.56	18.17	14.55	323.7	305.6	1.06	12.67	11.01	429.7	388.7	1.90	22.95	17.93
	April	376.1	0.97	18.12	15.04	326.9	308.7	0.99	12.74	11.25	433.9	395.3	0.99	22.72	18.58
	May	379.9	1.01	17.93	15.50	331.0	311.9	1.24	13.15	11.50	438.5	402.0	1.05	22.28	19.18
	June	384.0	1.06	17.75	15.93	333.6	315.1	0.81	13.09	11.75	443.4	408.6	1.11	21.83	19.72
	July	387.5	0.93	17.38	16.30	338.0	318.5	1.31	13.72	12.05	447.2	415.1	0.86	21.03	20.16
	August	391.5	1.02	17.01	16.60	340.6	321.9	0.77	13.41	12.29	451.9	421.5	1.06	20.30	20.50
	September	396.0	1.15	16.63	16.83	344.8	325.3	1.24	13.74	12.55	457.6	427.7	1.26	19.57	20.71
	October	399.9	0.98	15.99	16.96	347.6	328.7	0.80	13.24	12.73	461.8	433.7	0.91	18.34	20.75
	November	404.2	1.08	15.40	16.98	352.0	332.3	1.26	13.85	12.96	466.7	439.4	1.07	17.21	20.62
	December	411.5	1.82	15.63	16.95	355.9	335.9	1.12	13.87	13.16	477.0	445.3	2.19	17.37	20.40
2022	January	417.6	1.47	15.60	16.87	360.4	339.6	1.25	13.87	13.33	484.7	451.2	1.62	17.13	20.09
	February	424.4	1.63	15.70	16.73	365.2	343.3	1.33	14.01	13.46	493.8	457.2	1.87	17.11	19.69
	March	431.8	1.74	15.92	16.54	368.8	347.1	0.98	13.91	13.56	503.6	463.3	1.99	17.20	19.21
	April	439.4	1.76	16.82	16.45	373.3	350.9	1.22	14.18	13.68	513.6	470.0	2.00	18.37	18.88
	May	447.2	1.78	17.71	16.45	380.3	355.0	1.87	14.90	13.83	524.0	477.1	2.01	19.50	18.68
	June	455.4	1.82	18.60	16.54	386.2	359.4	1.56	15.75	14.06	534.7	484.7	2.05	20.60	18.62
	July	463.6	1.82	19.64	16.75	393.0	364.0	1.75	16.26	14.28	545.6	492.9	2.04	22.02	18.75
	August	471.8	1.77	20.52	17.07	399.2	368.9	1.59	17.20	14.60	556.4	501.6	1.98	23.12	19.02
	September	478.2	1.36	20.77	17.43	405.5	373.9	1.59	17.60	14.93	564.4	510.5	1.43	23.34	19.36

Table 2 Composite Consumer Price Index (Base November 2009 = 100)

	All Items	All Items less Farm Produce.	All Items less Farm Produce. Energy	Imported Food	Food	Food & Non Alcoholic Bev.	Alcoholic Beverage, Tobacco and Kola	Clothing and Footwear	Housing, Water, Electricity, Gas and Other Fuel	Furnishings & Household Equipment Maintenance.	Health.	Transport	Communication	Recreation & Culture.	Education	Restaurants & Hotels	Miscellaneous Goods & Services	Month-on (%)	Year-on (%)	12-month average (%)
Weights	1000.0	513.10	405.55	132.88	507.06	518.00	10.87	76.50	167.34	50.30	30.04	65.08	6.80	6.87	39.44	12.12	16.63			
September	396.0	344.8	337.8	438.4	457.6	454.4	290.7	359.7	345.4	317.9	313.3	349.8	193.6	258.7	312.3	271.8	315.5	1.1	16.63	16.8
October	399.9	347.6	340.5	444.3	461.8	458.5	293.8	364.0	348.7	321.8	316.9	354.2	195.2	261.3	315.7	274.7	318.9	1.0	15.99	17.0
November	404.2	352.0	344.7	450.4	466.7	463.4	296.9	368.2	352.1	325.6	320.4	358.5	196.8	264.2	319.1	277.9	322.8	1.1	15.40	17.0
December	411.5	355.9	348.4	456.5	477.0	473.5	301.3	373.3	356.7	329.6	324.3	363.0	198.5	267.6	322.9	281.1	326.8	1.8	15.63	17.0
2022 January	417.6	360.4	352.7	462.8	484.7	481.2	305.7	378.6	361.0	333.6	328.3	367.6	200.2	271.1	326.8	284.5	330.9	1.5	15.60	16.9
February	424.4	365.2	357.5	469.3	493.8	490.2	310.3	384.0	365.4	337.8	332.4	372.4	202.0	274.7	330.9	288.0	335.2	1.6	15.70	16.7
March	431.8	368.8	360.5	475.8	503.6	499.9	315.1	389.7	370.4	342.3	336.8	377.9	203.8	278.3	335.4	291.7	339.7	1.7	15.92	16.5
April	439.4	373.3	364.6	482.5	513.6	509.8	320.2	395.6	375.5	347.0	341.3	383.7	205.8	282.1	339.9	295.5	344.4	1.76	16.82	16.4
May	447.2	380.3	371.8	489.2	524.0	520.1	325.4	401.6	380.7	351.9	346.1	389.7	207.8	286.1	344.8	299.3	349.2	1.78	17.71	16.4
June	455.4	386.2	377.6	496.2	534.7	530.7	330.9	407.8	386.1	357.0	351.0	396.0	210.0	290.2	349.8	303.3	354.3	1.82	18.60	16.5
July	463.6	393.0	384.3	503.1	545.6	541.5	336.4	414.2	391.6	362.1	356.0	402.4	212.2	294.3	355.0	307.3	359.4	1.82	19.64	16.8
August	471.8	399.2	390.5	510.1	556.4	552.2	341.7	420.5	397.0	367.3	361.0	409.1	214.4	298.4	350.1	311.4	364.5	1.77	20.52	17.1
September	478.2	405.5	396.9	517.2	564.4	560.1	344.8	423.9	402.2	371.3	366.4	415.4	216.3	302.5	365.0	316.0	369.9	1.36	20.77	17.4

Table 3 Urban Consumer Price Index (Base November 2009 = 100)

	All Items	All Items less Farm Produce.	All Items less Farm Produce and Energy	Imported Food	Food	Food & Non Alcoholic Bev.	Alcoholic Beverage, Tobacco and Kola	Clothing and Footwear	Housing Water, Electricity, Gas and Other Fuel	Furnishings & Household Equipment Maintenance.	Health.	Transport	Communication	Recreation & Culture.	Education	Restaurants & Hotels	Miscellaneous Goods & Services	Month-on (%)	Year-on (%)	12-month average (%)
<i>Weight</i>	1000.0	552.64	418.67	155.45	476.88	490.59	11.19	65.50	191.51	49.81	27.40	74.54	10.14	7.14	40.05	14.49	17.65			
Sep-	407.3	354.2	345.9	447.9	472.6	468.2	289.7	375.1	362.7	326.8	325.2	381.2	196.5	272.4	320.4	285.7	330.5	1.21	17.19	17.41
October	411.5	358.4	350.3	454.0	477.0	472.6	293.0	379.9	366.0	331.0	329.1	386.3	198.3	275.3	324.1	289.0	334.3	1.02	16.52	17.53
November	416.1	362.4	354.0	460.2	482.4	477.9	296.3	384.4	369.5	335.1	332.9	391.2	200.0	278.6	327.8	292.6	338.8	1.12	15.92	17.55
December	423.8	366.8	358.1	466.5	493.7	489.0	300.9	389.9	374.1	339.3	337.0	396.4	201.8	282.3	331.8	296.1	343.2	1.87	16.17	17.52
2022 January	430.3	371.1	362.1	473.0	502.3	497.5	305.6	395.4	378.4	343.7	341.2	401.6	203.7	286.1	336.0	299.8	347.9	1.53	16.17	17.44
February	437.4	376.4	367.4	479.7	512.0	507.1	310.4	401.1	382.9	348.2	345.6	407.2	205.6	289.9	340.3	303.5	352.8	1.65	16.25	17.29
March	445.1	381.6	372.3	486.5	522.5	517.4	315.4	407.2	387.9	353.0	350.3	413.6	207.7	293.8	345.1	307.5	357.9	1.76	16.44	17.10
April	453.1	386.4	376.9	493.6	533.3	528.0	320.7	413.5	393.0	358.1	355.2	420.3	209.8	297.9	349.9	311.5	363.1	1.78	17.35	17.01
May	461.3	393.8	384.4	500.7	544.4	539.0	326.1	420.0	398.2	363.3	360.3	427.3	212.1	302.2	355.2	315.7	368.5	1.81	18.24	17.00
June	469.7	399.2	389.6	507.9	555.8	550.2	331.6	426.6	403.5	368.7	365.4	434.5	214.4	306.6	360.5	320.0	373.9	1.82	19.09	17.09
July	478.2	406.7	396.9	515.0	567.4	561.7	337.2	433.3	408.9	374.2	370.7	441.9	216.7	311.0	365.9	324.3	379.5	1.82	20.09	17.29
August	486.8	412.5	402.2	522.3	578.9	573.1	342.9	440.2	414.4	379.7	376.0	449.4	219.0	315.6	371.4	328.7	385.2	1.79	20.95	17.59
September	493.9	419.6	409.6	529.7	587.9	582.0	346.1	443.9	419.6	384.2	382.2	457.2	221.2	320.2	376.6	333.9	391.3	1.46	21.25	17.94

Table 4 Rural Consumer Price Index (Base November 2009 = 100)

	All items	All items less Farm Produce.	All items less Farm Produce and Energy	Imported Food	Food	Food & Non Alcoholic Bev.	Alcoholic Beverage and Kola	Clothing and Footwear	Housing Water, Electricity, Gas and Other Fuel	Furnishings & Household Equipment Maintenance.	Health.	Transport	Communication	Recreation & Culture.	Education	Restaurant & Hotels	Miscellaneous Goods & Services	Month-on (%)	Year-on (%)	12-month average (%)
Weight	1000.00	480.09	394.61	114.03	532.25	540.89	10.61	85.68	147.16	50.72	32.25	57.19	4.01	6.65	38.93	10.14	15.78			
Sep-	386.3	337.1	331.0	430.4	445.6	443.2	292.7	345.7	329.2	311.4	303.7	315.8	189.1	246.9	305.6	260.2	303.1	1.10	16.08	16.26
October	389.9	338.6	332.4	436.3	449.5	447.1	295.7	349.6	332.3	315.0	307.0	319.6	190.6	249.3	308.7	262.9	306.2	0.95	15.48	16.39
November	394.0	343.3	337.0	442.2	454.1	451.7	298.5	353.5	335.7	318.6	310.4	323.3	192.1	251.8	311.9	265.7	309.6	1.04	14.89	16.42
December	401.0	346.8	340.3	448.2	463.6	461.0	302.8	358.3	340.3	322.3	314.0	327.1	193.7	254.9	315.5	268.7	313.2	1.77	15.11	16.40
January	406.7	351.5	344.9	454.3	470.6	468.0	307.1	363.3	344.6	326.1	317.8	331.1	195.3	258.2	319.2	271.9	316.9	1.42	15.06	16.31
February	413.2	355.8	349.2	460.6	479.1	476.5	311.5	368.4	349.1	330.0	321.7	335.2	196.9	261.5	323.0	275.2	320.6	1.61	15.18	16.18
March	420.3	358.0	350.6	466.9	488.4	485.7	316.2	373.8	354.1	334.3	325.8	340.0	198.5	265.0	327.3	278.6	324.7	1.73	15.42	16.00
April	427.7	362.2	354.4	473.2	497.9	495.1	321.1	379.3	359.3	338.8	330.0	344.8	200.2	268.5	331.6	282.2	328.9	1.74	16.32	15.91
May	435.2	368.9	361.3	479.7	507.6	504.7	326.2	385.0	364.6	343.4	334.5	349.8	202.1	272.2	336.1	285.8	333.2	1.76	17.21	15.91
June	443.0	375.3	367.7	486.4	517.8	514.8	331.6	390.9	370.0	348.2	339.2	355.3	204.1	276.1	340.9	289.5	337.9	1.81	18.13	16.02
July	451.1	381.4	373.8	493.1	528.2	525.1	337.0	396.9	375.6	353.1	344.0	360.8	206.1	279.9	345.8	293.3	342.7	1.81	19.22	16.25
August	458.9	388.1	380.6	499.9	538.3	535.2	342.2	402.7	381.1	358.0	348.7	366.5	208.1	283.7	350.6	297.0	347.3	1.75	20.12	16.58
September	464.8	393.8	386.2	506.8	545.4	542.3	345.0	405.8	386.2	361.5	353.5	371.6	209.8	287.4	355.4	301.2	352.2	1.27	20.32	16.94

Table 5 Combined Urban And Rural State Consumer Price Index (Base Period: November 2009 = 100)

State	Sep-21		Aug-22		Sep-22					
	Food	All	Food	All	Food	All	MoM		YoY	
		Items		Items		Items	Food	All Items	Food	All Items
Abia	447.9	394.9	549.8	471.5	559.4	480.5	1.74	1.90	24.88	21.66
Abuja	451.3	388.6	547.5	461.4	553.6	458.0	1.10	- 0.72	22.68	17.87
Adamawa	447.8	384.6	536.3	454.3	544.4	455.5	1.50	0.25	21.56	18.42
Akwa Ibom	450.8	391.5	563.1	471.4	573.6	480.3	1.88	1.87	27.25	22.67
Anambra	457.8	405.1	549.0	487.0	552.8	490.9	0.68	0.81	20.75	21.18
Bauchi	405.1	457.5	487.0	551.0	490.9	561.0	0.81	1.83	21.18	22.63
Bayelsa	458.4	398.8	568.2	482.7	573.3	484.5	0.90	0.37	25.06	21.49
Benue	458.5	391.3	563.6	470.8	569.6	480.4	1.06	2.05	24.22	22.78
Borno	453.2	379.1	540.4	442.1	549.7	447.8	1.72	1.31	21.30	18.12
Cross River	463.3	363.9	570.9	438.3	580.8	446.2	1.74	1.80	25.36	22.62
Delta	463.1	375.3	564.0	444.5	574.6	450.6	1.88	1.37	24.08	20.06
Ebonyi	466.2	405.7	586.8	491.7	593.9	496.6	1.22	1.00	27.41	22.40
Edo	456.7	403.5	566.4	486.5	570.7	489.9	0.77	0.70	24.97	21.42
Ekiti	461.1	369.3	567.3	438.9	572.7	443.7	0.95	1.09	24.20	20.15
Enugu	465.9	376.1	567.6	445.5	582.4	453.6	2.61	1.81	25.01	20.62
Gombe	455.3	402.8	550.5	476.9	560.8	484.2	1.87	1.54	23.15	20.21
Imo	454.2	361.0	565.9	428.2	571.5	432.7	0.99	1.07	25.82	19.88
Jigawa	455.5	405.6	531.4	471.4	543.0	483.6	2.18	2.58	19.20	19.22
Kaduna	469.0	414.7	551.1	487.0	557.4	493.5	1.15	1.32	18.84	18.99
Kano	466.0	412.4	558.0	486.8	564.6	493.6	1.19	1.39	21.16	19.69
Katsina	443.2	363.5	528.1	427.2	540.1	434.7	2.26	1.76	21.84	19.58
Kebbi	458.4	421.0	560.1	506.1	567.2	513.2	1.27	1.42	23.72	21.92
Kogi	504.6	442.6	635.8	539.4	648.2	548.0	1.95	1.59	28.46	23.82
Kwara	471.9	462.5	614.5	551.8	628.0	562.4	2.19	1.91	33.09	21.59
Lagos	467.9	410.0	584.3	496.0	592.0	501.2	1.31	1.06	26.52	22.25
Nassarawa	459.1	407.1	554.5	483.0	558.6	487.9	0.74	1.02	21.66	19.85
Niger	453.3	407.2	551.8	483.2	555.2	492.8	0.62	1.97	22.48	21.01
Ogun	466.9	421.2	570.2	501.6	584.4	511.4	2.50	1.95	25.16	21.41
Ondo	461.0	406.0	575.8	493.7	578.0	498.5	0.38	0.97	25.37	22.78
Osun	459.6	397.2	556.7	468.0	563.0	474.4	1.13	1.37	22.48	19.44
Oyo	477.4	424.4	562.5	500.8	576.1	510.2	2.43	1.88	20.68	20.21
Plateau	458.4	410.8	549.1	485.2	554.0	489.5	0.88	0.89	20.84	19.16
Rivers	451.1	392.9	570.3	477.1	574.5	485.2	0.74	1.71	27.35	23.49
Sokoto	460.1	402.4	554.4	477.5	549.5	476.6	- 0.88	- 0.19	19.44	18.44
Taraba	454.4	390.1	542.9	459.0	547.8	462.8	0.90	0.84	20.57	18.65
Yobe	455.7	407.2	545.3	480.7	557.4	491.4	2.22	2.22	22.30	20.68
Zamfara	457.3	408.3	547.7	483.5	555.8	490.0	1.47	1.34	21.54	20.01

Note: Indices may not be used for inter-state price comparison because market baskets differ from state to state

CONTACT



National Bureau of Statistics

Head Office

Plot 762 Independence Avenue,
Central Business District, Garki
Abuja.

Sunday J. Ichedi

Information Desk

Head, Communication & Public
Relations Department (C&PRD)
Phone: +2348037051701
sjichedi@nigerianstat.gov.ng

Moses Mathew

Statistical Information Officer

Phone: +2347069071157
matmoses@nigerianstat.gov.ng

Nuhu Joseph Waney II

Chief of Protocol

Phone: +2348037020063
jwnuhu@nigerianstat.gov.ng



@nbsnigeria



NBSNigeria



Nbs_nigeria

