



NATIONAL BUREAU OF STATISTICS

# Consumer Price Index

## July 2022

---

(BASE PERIOD NOVEMBER 2009 = 100)

**Report Date: August 2022**

**Data Source: National Bureau of Statistics (NBS)**

# CONTENT

Brief Methodology	3
All Item Index	7
Food Index	12
All Items Less Farm Produce	14
State Profile	15
Appendix	18
Contact	23

## BRIEF METHODOLOGY

The CPI measures the average change over time in the prices of goods and services consumed by people for day-to-day living. The construction of the CPI combines economic theory, sampling, and other statistical techniques using data from other surveys to produce a weighted measure of average price changes in the Nigerian economy. The weighting occurs to capture the importance of the selected commodities in the entire index. The production of the CPI requires the skills of economists, statisticians, computer scientists, data collectors, and others.

Key in the construction of the price index is the selection of the market basket of goods and services. Every month, 10,534 informants spread across the country provide price data for the computation of the CPI. The market items currently comprise 740 goods and services regularly priced. The first stage in the calculation of the CPI is the collection of prices on each item (740 goods and services) from outlets in each sector (rural or urban) for each state. Prices are then averaged for each item per sector across the state. The next step is to use the average price to calculate the basic index for each commodity: The current year price of each commodity is compared with a base year's price to obtain a relative price.

Next, we use the Laspeyres formula to compute an aggregated index for each class (which has a multitude of commodities that have similar consumption purposes): Here the sum of the product of weights (obtained from the expenditure survey) and relative prices for each item is divided by the sum of the weight of the items in that class, and the result multiplied by 100 gives the required index number. This index number is still classified according to the urban and rural sectors for each of the 36 states and the FCT. This yields 85 classes then 48 groups which are then reclassified into 12 Divisions to derive:

1. The Country Composite Index
2. The Urban National Index
3. The Rural National Index
4. The Combined Urban and Rural State Composite Index

The survey methodology generates 3774 all-items indices for all states and the FCT.

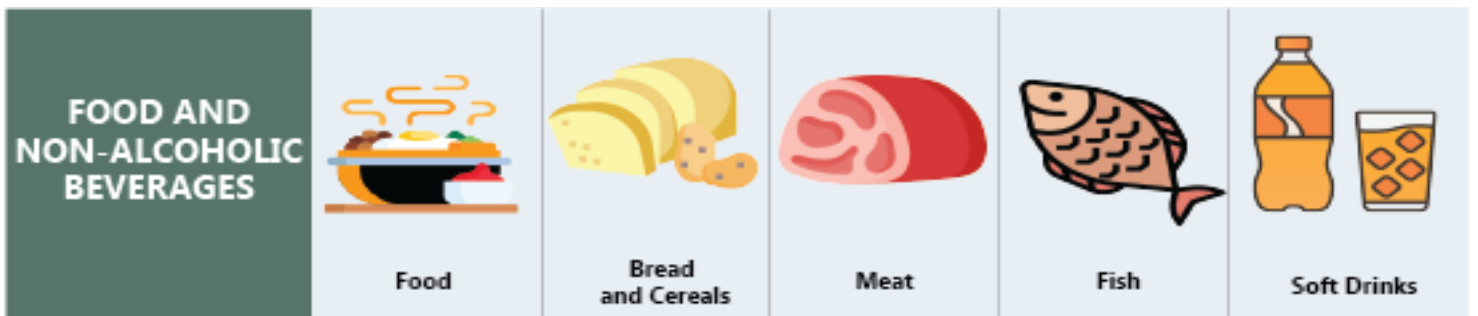
This edition of the Statistical News contains the revised Consumer Price Index (CPI) based on Nigeria Living Standard Survey (NLSS) 2003/2004. The consumption expenditure data were re-valued to November 2009, which is the base period for the revised CPI.

The May 2003 and September 1985-based indices are being continued using factors derived from the new CPI. These indices will yield the same price change for any commodity group contained in all the series.

A new sub-index Imported Food Index- is available in the revised CPI.

Note: The urban and rural indices were weighted with the ratio of their populations to the national i.e., 0.455 and 0.545 respectively to compute the composite indices at the 12 Classification of Individual Consumption by Purpose (COICOP) functions and all-items levels. This may cause a variance between a recalculated all items index using the weights and the All-Items index published because the weights were computed only from the consumption expenditure survey result.

The following breakdown highlights a non-exhaustive list of the components of the current CPI:



## HOUSING, WATER, ELECTRICITY AND GAS



Actual and imputed rentals for housing



Water supply



Liquid fuel



Electricity



Gas

## FURNISHINGS, HOUSEHOLD EQUIPMENT



Furniture and furnishings



Household textiles



Repair of household appliances



Carpets and other floor coverings



Non-durable household goods

## HEALTH



Pharmaceutical products



Medical services



Dental services



Hospital services



Paramedical services

## TRANSPORT



Motor cars



Motor cycles



Passenger transport by air



Passenger transport by road



Passenger transport by sea and inland waterways

## COMMUNICATION



Postal services



Telephone and telefax equipment



Telephone and telefax services

## RECREATION AND CULTURE



Photographic development



Musical instrument



Recreational and sporting services



Games of chance



Audio-visual, photographic and information processing equipment

## EDUCATION



Books & stationery

## RESTAURANTS AND HOTELS



Accommodation services



Catering services

## MISCELLANEOUS GOODS AND SERVICES



Hairdressing salons and personal grooming establishments



Jewellery, clocks and watches



Appliances, articles and products for personal care



Insurance



Other services



## ALL ITEMS INDEX

CPI for July 2022 was 463.6 relative to 387.5 in July 2021. In July 2022, on a year –on- year basis, the headline inflation rate was 19.64%. This was 2.27% points higher compared to the rate recorded in July 2021, which was (17.38 %). This shows that the headline inflation rate increased in the month of July 2022 when compared to the same month in the previous year (i.e., July 2021). This means that in the month of July 2022 the general price level was 2.26% higher than in July 2021.

On a month-on-month basis, the Headline inflation rate in July 2022 was 1.817 %, which was 0.001% higher than the rate recorded in June 2022 (1.816 %).

The percentage change in the average CPI for the twelve months period ending July 2022 over the average of the CPI for the previous twelve months period was 16.75%, showing a 0.46% increase compared to 16.30% recorded in July 2021.

The increases were recorded in all COICOP divisions that yielded the Headline index.

On a year-on-year basis, in the month of July 2022, the urban inflation rate was 20.09%, this was 2.08% higher compared to 18.01% recorded in July 2021. On a month-on-month basis, the urban inflation rate was 1.82% in July 2022, this was a 0.0002% decline compared to June 2022 (1.82%). The corresponding twelve-month average for the urban inflation rate was 17.29 % in July 2022. This was 0.40% higher compared to 16.89% reported in July 2021.

The rural inflation rate in July 2022 was 19.22% on a year-on-year basis; this was 2.47% higher compared to the 16.75% recorded in July 2021. On a month-on-month basis, the rural inflation rate in July 2022 was 1.811%, up by 0.002% compared to June 2022 (1.809%). The corresponding twelve-month average for the rural inflation rate in July 2022 was 16.25%. This was 0.52% higher compared to 15.73% recorded in July 2021.



NATIONAL BUREAU OF STATISTICS

## HEADLINE CPI IN JULY 2022 ROSE BY

**19.64%**

**YEAR-ON-YEAR**

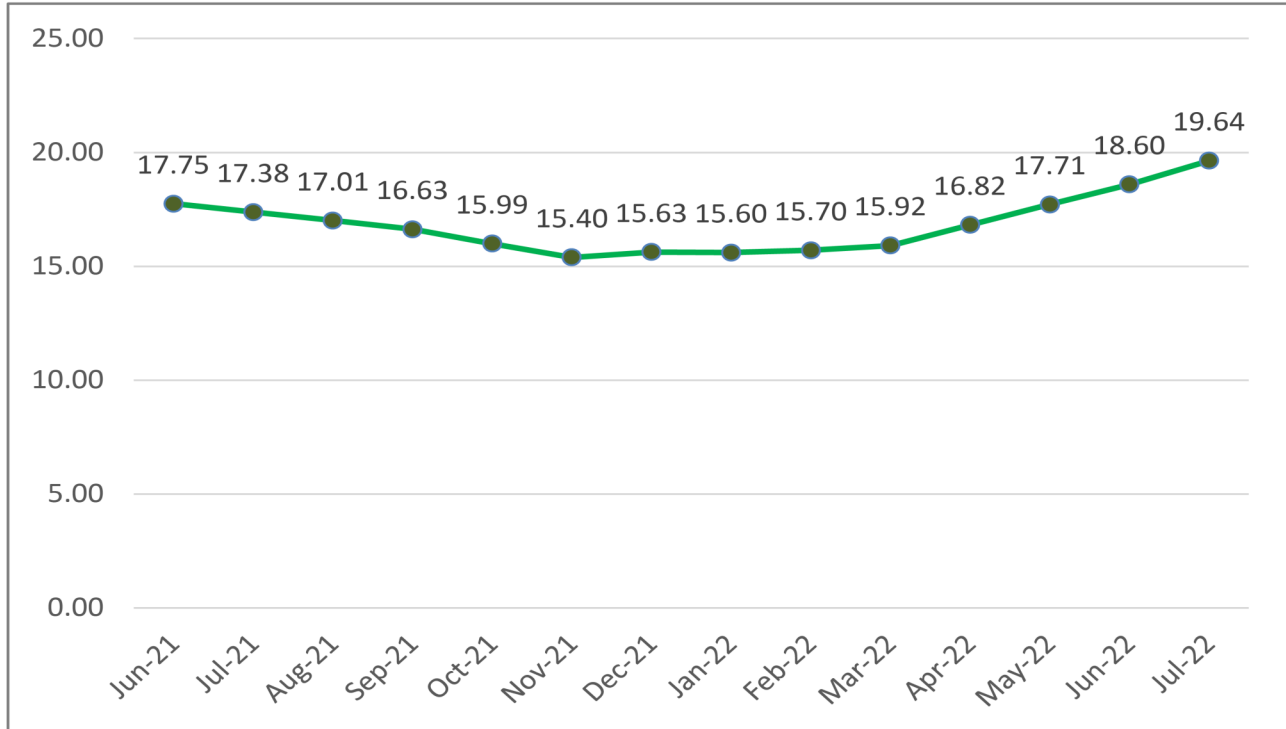
**(FROM 17.38% IN JULY 2021)**

**1.82%**

**MONTH-ON-MONTH**

**(FROM 1.82% IN JUNE 2022)**

### CPI (%) HEADLINE 12-MONTH SERIES



**The CPI (Consumer Price Index) measures the average change over time in prices of goods and services consumed by people for day-to-day living i.e it measures the inflation rate**





NATIONAL BUREAU OF STATISTICS

## URBAN

**20.09%**

YEAR-ON-YEAR

(FROM 18.01% IN JULY 2021)

**1.82%**

MONTH-ON-MONTH

(FROM 1.82% IN JUNE 2022)



## URBAN AND RURAL INDEX



## RURAL

**19.22%**

YEAR-ON-YEAR

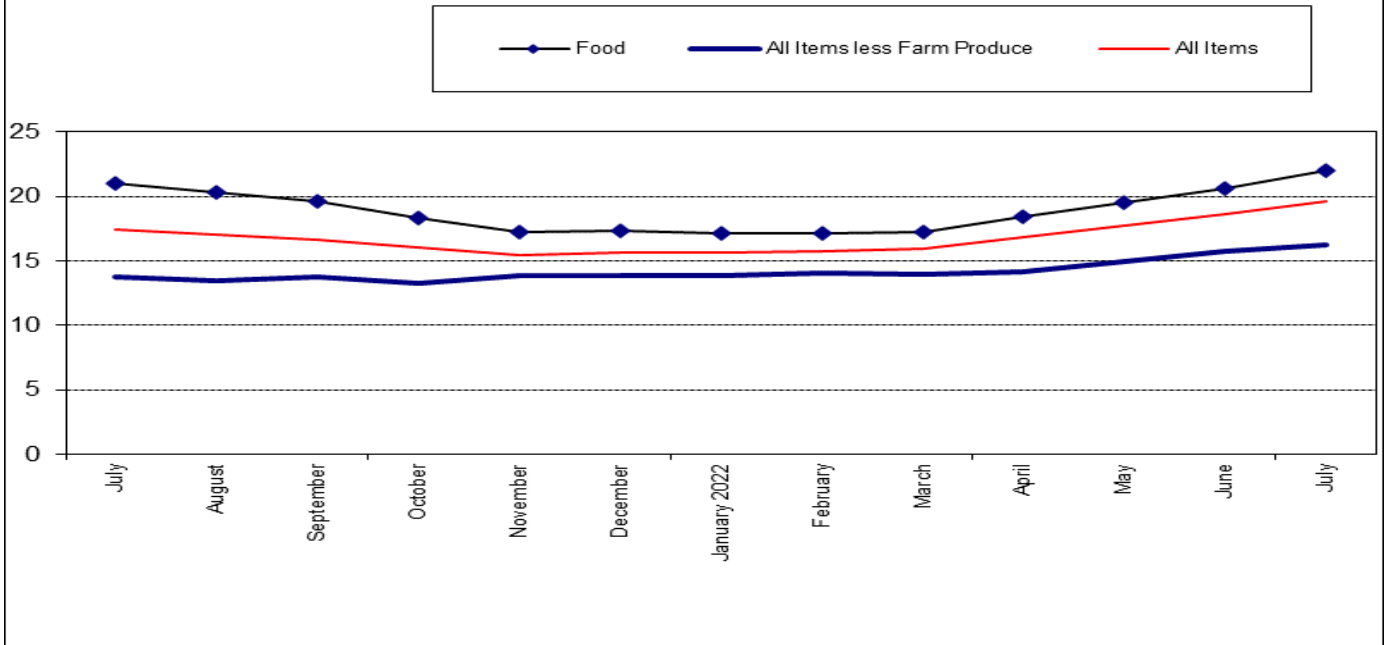
(FROM 16.75% IN JULY 2021)

**1.81%**

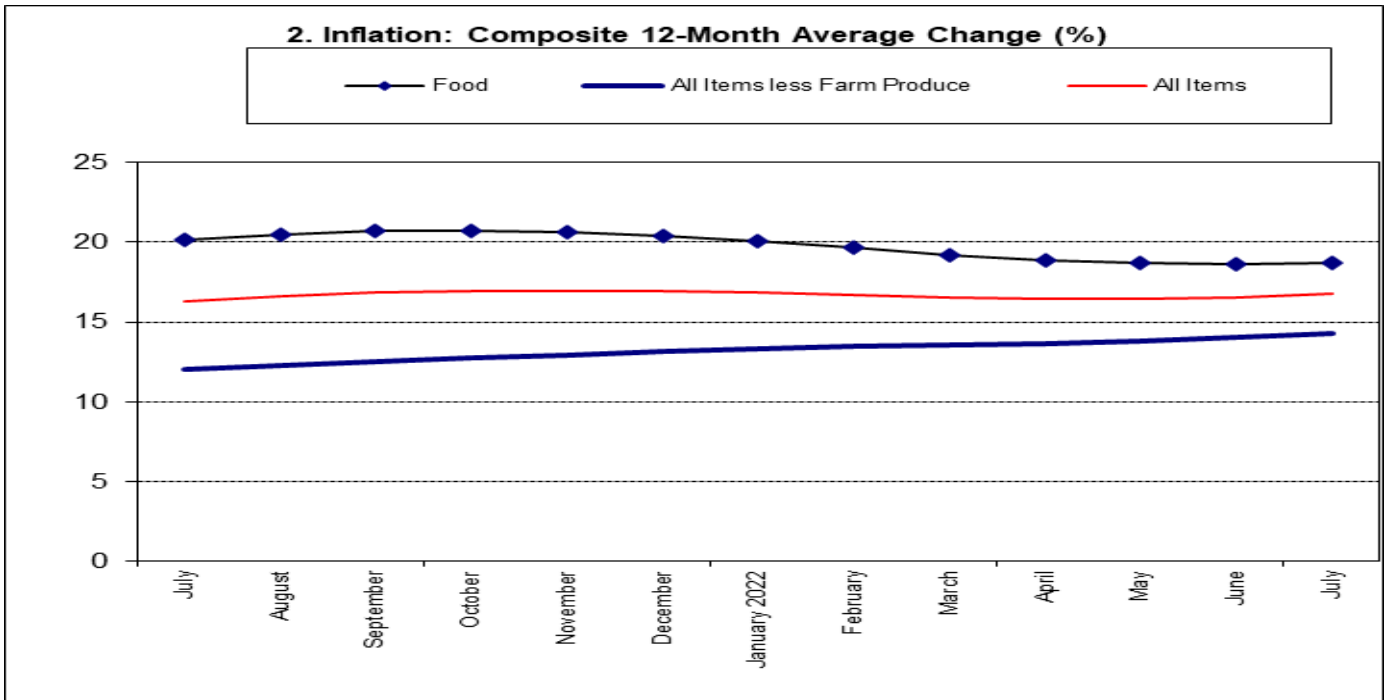
MONTH-ON-MONTH

(FROM 1.81% IN JUNE 2022)

### 1. Inflation: Composite Year-on Change (%)

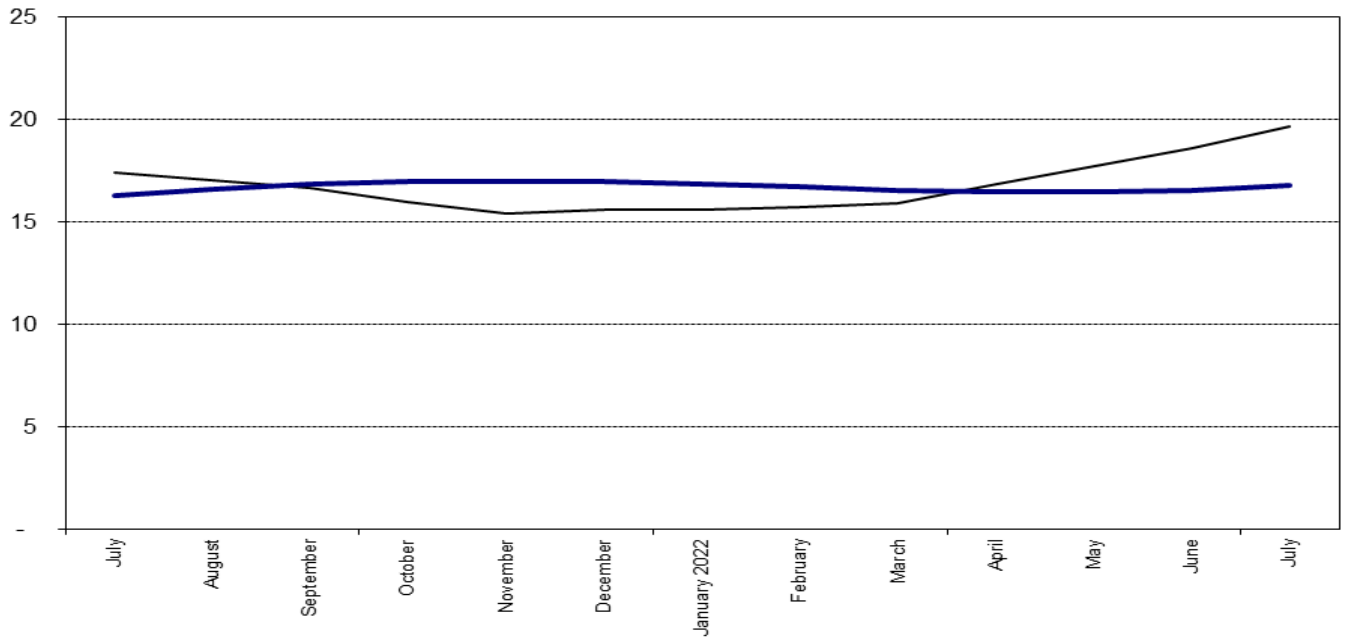


### 2. Inflation: Composite 12-Month Average Change (%)



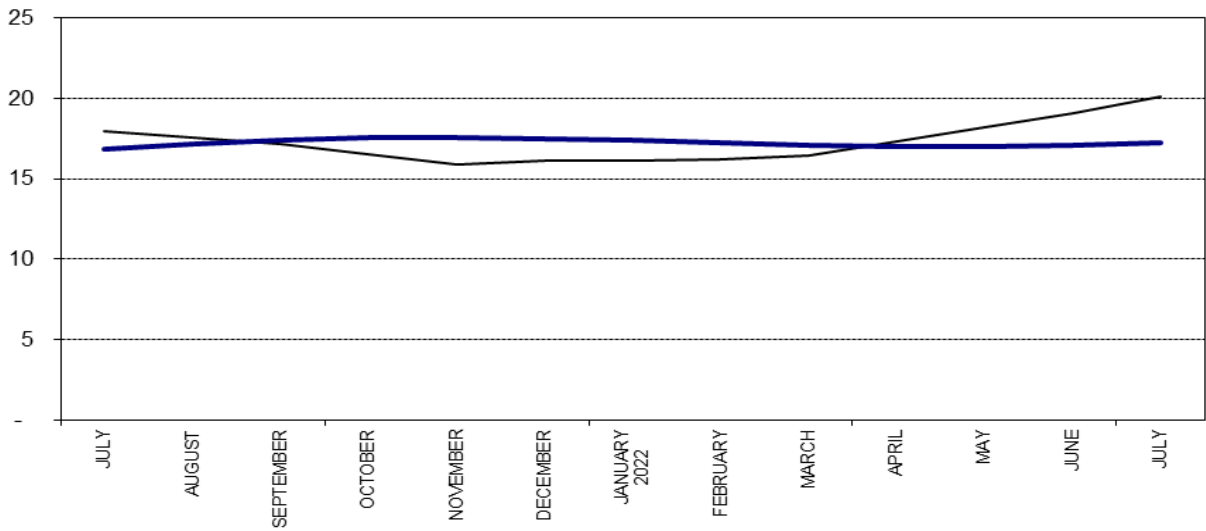
### 3. Inflation -Composite All Items (%)

— Year-on Rate      — 12-Month Average



### 4. Inflation -Urban All Items (%)

— Year-on Rate      — 12-Month Average

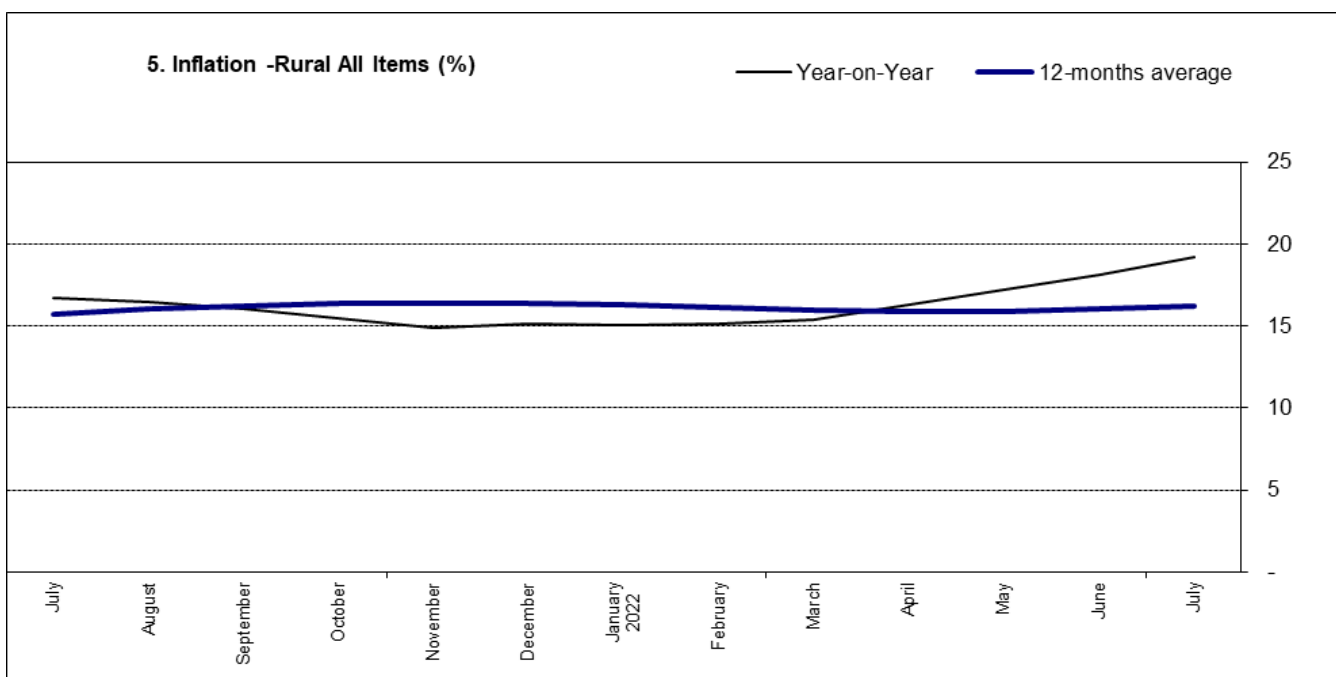


# FOOD INDEX

The food inflation rate in July 2022 was 22.02 % on a year-on-year basis; which was 0.99% higher compared to the rate recorded in July 2021 (21.03%). This rise in food inflation was caused by increases in prices of Bread and cereals, Food products n.e.c, Potatoes, yam and other tubers, meat, fish, oil, and fat.

On a month-on-month basis, the food inflation rate in July was 2.04%, this was a 0.01% insignificant decline compared to the rate recorded in June 2022 (2.05%). This decline is attributed to a reduction in the prices of some food items like Tubers, Maize, Garri, and Vegetables.

The average annual rate of food inflation for the twelve-month period ending July 2022 over the previous twelve-month average was 18.75%, which was a 1.42% points decline from the average annual rate of change recorded in July 2021 (20.16%).





NATIONAL BUREAU OF STATISTICS

## FOOD SUB-INDEX IN JULY 2022 ROSE BY

**22.02%**

YEAR-ON-YEAR  
(FROM 21.03% IN JULY 2021)

**2.04%**

MONTH-ON-MONTH  
(FROM 2.05% IN JUNE 2022)

## CORE SUB-INDEX IN JULY 2022 ROSE BY

**16.26%**

YEAR-ON-YEAR  
(FROM 13.72% IN JULY 2021)

**1.75%**

MONTH-ON-MONTH  
(FROM 1.56% IN JUNE 2022)

## ALL ITEMS LESS FARM PRODUCE

The “All items less farm produce” or Core inflation, which excludes the prices of volatile agricultural produce stood at 16.26% in July 2022 on a year-on-year basis; up by 2.54% when compared to 13.72% recorded in July 2021.

On a month-on-month basis, the core inflation rate was 1.75% in July 2022. This was up by 0.20% when compared to 1.56% recorded in June 2022.

The highest increases were recorded in prices of Gas, Liquid fuel, Solid fuel, Passenger transport by road, Passenger transport by Air, Garments, Cleaning, Repair and Hire of clothing.

The average 12-month annual inflation rate was 14.28% for the twelve-month period ending July 2022; this was 2.23% points higher than the 12.05% recorded in July 2021.



## STATE PROFILES

In analysing price movements under this section, it should be noted that CPI is weighted by consumption expenditure patterns that differ across states and locations. Accordingly, the weight assigned to a particular food or non-food item may differ from state to state making interstate comparisons of consumption basket inadvisable and potentially misleading.

### **All Items Inflation**

In July 2022, all items' inflation rate on a year-on-year basis was highest in Akwa Ibom (22.88%), Ebonyi (22.51%), Kogi (22.08%), while Jigawa (16.62%), Kaduna (17.04%) and Borno (18.04%) recorded the slowest rise in headline Year-on-Year inflation.

However, on a month-on-month basis, July 2022 recorded the highest increases in Adamawa (2.87%), Abuja (2.84%), Oyo (2.77%), while Bauchi (0.82%), Kano (0.83%) and Niger (1.03%) recorded the slowest rise on month-on-month inflation. .

### **Food Inflation**

In July 2022, food inflation on a year-on-year basis was highest in Kwara (29.28%), Akwa Ibom (27.22%), and Kogi (26.08%), while Kaduna (17.16%), Jigawa (17.46%) and Anambra (19.25%) recorded the slowest rise on year-on-year food inflation.

On a month-on-month basis, July 2022 food inflation was highest in Kwara (3.90%), Delta (3.61%), and Benue (2.94%), while Taraba (0.14%), Gombe (0.94%), and Niger (1.13%) recorded the slowest rise on month-on-month inflation.

## ALL ITEMS INFLATION

### YEAR-ON-YEAR

#### HIGHEST RISE IN

<b>AKWA-IBOM</b>	▶	<b>22.88%</b>
<b>EBONYI</b>	▶	<b>22.51%</b>
<b>KOGI</b>	▶	<b>22.08%</b>

#### SLOWEST RISE IN

<b>JIGAWA</b>	▶	<b>16.62%</b>
<b>KADUNA</b>	▶	<b>17.04%</b>
<b>BORNO</b>	▶	<b>18.04%</b>

### MONTH-ON-MONTH

#### HIGHEST RISE IN

<b>ADAMAWA</b>	▶	<b>2.87%</b>
<b>F.C.T</b>	▶	<b>2.84%</b>
<b>OYO</b>	▶	<b>2.77%</b>

#### SLOWEST RISE IN

<b>BAUCHI</b>	▶	<b>0.82%</b>
<b>KANO</b>	▶	<b>0.83%</b>
<b>NIGER</b>	▶	<b>1.03%</b>

## FOOD INFLATION

### YEAR-ON-YEAR

#### HIGHEST RISE IN

<b>KWARA</b>	▶	<b>29.28%</b>
<b>AKWA-IBOM</b>	▶	<b>27.22%</b>
<b>KOGI</b>	▶	<b>26.08%</b>

#### SLOWEST RISE IN

<b>KADUNA</b>	▶	<b>17.16%</b>
<b>JIGAWA</b>	▶	<b>17.46%</b>
<b>ANAMBRA</b>	▶	<b>19.25%</b>

### MONTH-ON-MONTH

#### HIGHEST RISE IN

<b>KWARA</b>	▶	<b>3.90%</b>
<b>DELTA</b>	▶	<b>3.61%</b>
<b>BENUE</b>	▶	<b>2.94%</b>

#### SLOWEST RISE IN

<b>TARABA</b>	▶	<b>0.14%</b>
<b>GOMBE</b>	▶	<b>0.94%</b>
<b>NIGER</b>	▶	<b>1.13%</b>

# APPENDIX

**Table 1 Composite Consumer Price Index (Base November 2009 = 100)**

	All Items Index			All Items less Farm Produce			Food						
	Monthly	Month-on change (%)	Year-on change (%)	12-Month average change (%)	Monthly	12-Month Average	Month-on change (%)	Year-on change (%)	12-Month average change (%)				
<b>Weights</b>	<b>1000.00</b>				<b>513.10</b>				<b>507.06</b>				
2021 January	361.2	1.49	16.47	13.62	316.5	1.26	11.85	10.52	413.8	375.7	1.83	20.57	16.66
February	366.8	1.54	17.33	14.05	320.3	1.21	12.38	10.77	421.6	382.0	1.89	21.79	17.25
March	372.5	1.56	18.17	14.55	323.7	1.06	12.67	11.01	429.7	388.7	1.90	22.95	17.93
April	376.1	0.97	18.12	15.04	326.9	0.99	12.74	11.25	433.9	395.3	0.99	22.72	18.58
May	379.9	1.01	17.93	15.50	331.0	1.24	13.15	11.50	438.5	402.0	1.05	22.28	19.18
June	384.0	1.06	17.75	15.93	333.6	0.81	13.09	11.75	443.4	408.6	1.11	21.83	19.72
July	387.5	0.93	17.38	16.30	338.0	1.31	13.72	12.05	447.2	415.1	0.86	21.03	20.16
August	391.5	1.02	17.01	16.60	340.6	0.77	13.41	12.29	451.9	421.5	1.06	20.30	20.50
September	396.0	1.15	16.63	16.83	344.8	1.24	13.74	12.55	457.6	427.7	1.26	19.57	20.71
October	399.9	0.98	15.99	16.96	347.6	0.80	13.24	12.73	461.8	433.7	0.91	18.34	20.75
November	404.2	1.08	15.40	16.98	352.0	1.26	13.85	12.96	466.7	439.4	1.07	17.21	20.62
December	411.5	1.82	15.63	16.95	355.9	1.12	13.87	13.16	477.0	445.3	2.19	17.37	20.40
2022 January	417.6	1.47	15.60	16.87	360.4	1.25	13.87	13.33	484.7	451.2	1.62	17.13	20.09
February	424.4	1.63	15.70	16.73	365.2	1.33	14.01	13.46	493.8	457.2	1.87	17.11	19.69
March	431.8	1.74	15.92	16.54	368.8	0.98	13.91	13.56	503.6	463.3	1.99	17.20	19.21
April	439.4	1.76	16.82	16.45	373.3	1.22	14.18	13.68	513.6	470.0	2.00	18.37	18.88
May	447.2	1.78	17.71	16.45	380.3	1.87	14.90	13.83	524.0	477.1	2.01	19.50	18.68
June	455.4	1.82	18.60	16.54	386.2	1.56	15.75	14.06	534.7	484.7	2.05	20.60	18.62
July	463.6	1.82	19.64	16.75	393.0	1.75	16.26	14.28	545.6	492.9	2.04	22.02	18.75

Table 2 Composite Consumer Price Index (Base November 2009 = 100)

	All Items	All Items less Farm Produce	All Items less Farm Produce and Energy	Imported Food	Food	Food & Non-Alcoholic Bev.	Alcoholic Beverage Tobacco and Kola	Clothing and Footwear	Housing, Electricity, Gas and Other Fuel	Furnishings & Household Equipment Maintenance	Health	Transportation	Communication	Recreation & Culture	Education	Resaurants & Hotels	Miscellaneous & Services	Month-on-month (%)	Year-on-year (%)	12-month average (%)
<b>Weights</b>	<b>1000.0</b>	<b>513.10</b>	<b>405.55</b>	<b>132.88</b>	<b>507.06</b>	<b>518.00</b>	<b>10.87</b>	<b>76.50</b>	<b>167.34</b>	<b>50.30</b>	<b>30.04</b>	<b>65.08</b>	<b>6.80</b>	<b>6.87</b>	<b>39.44</b>	<b>12.12</b>	<b>16.63</b>			
2021 January	361.2	316.5	309.0	394.2	413.8	411.0	268.0	328.1	323.9	291.0	285.9	319.4	181.1	238.2	288.7	250.9	289.4	1.5	16.47	13.6
Febru-	366.8	320.3	312.8	399.4	421.6	418.7	271.0	331.9	326.8	294.2	289.7	323.5	182.6	240.6	291.6	253.3	292.6	1.5	17.33	14.1
March	372.5	323.7	316.1	404.8	429.7	426.7	274.1	335.7	329.8	297.5	293.6	327.6	184.1	243.1	294.5	255.8	295.9	1.6	18.17	14.6
April	376.1	326.9	319.5	410.1	433.9	430.9	277.0	339.6	332.1	300.9	296.9	331.2	185.7	245.7	297.2	258.3	299.1	1.0	18.12	15.0
May	379.9	331.0	323.7	415.5	438.5	435.4	279.7	343.5	334.4	304.3	300.2	334.8	187.2	248.3	299.9	260.9	302.4	1.0	17.93	15.5
June	384.0	333.6	326.4	421.1	443.4	440.3	282.6	347.6	336.9	307.8	303.6	338.5	188.8	251.0	302.9	263.6	305.7	1.1	17.75	15.9
July	387.5	338.0	331.1	426.7	447.2	444.1	285.3	351.8	339.7	311.3	307.0	342.3	190.4	253.6	306.0	266.3	309.0	0.9	17.38	16.3
August	391.5	340.6	333.4	432.5	451.9	448.8	287.8	355.7	342.5	314.5	310.1	346.0	192.0	256.2	309.1	269.0	312.2	1.0	17.01	16.6
Sep-	396.0	344.8	337.8	438.4	457.6	454.4	290.7	359.7	345.4	317.9	313.3	349.8	193.6	258.7	312.3	271.8	315.5	1.1	16.63	16.8
October	399.9	347.6	340.5	444.3	461.8	458.5	293.8	364.0	348.7	321.8	316.9	354.2	195.2	261.3	315.7	274.7	318.9	1.0	15.99	17.0
Novem-	404.2	352.0	344.7	450.4	466.7	463.4	296.9	368.2	352.1	325.6	320.4	358.5	196.8	264.2	319.1	277.9	322.8	1.1	15.40	17.0
Decem-	411.5	355.9	348.4	456.5	477.0	473.5	301.3	373.3	356.7	329.6	324.3	363.0	198.5	267.6	322.9	281.1	326.8	1.8	15.63	17.0
2022 January	417.6	360.4	352.7	462.8	484.7	481.2	305.7	378.6	361.0	333.6	328.3	367.6	200.2	271.1	326.8	284.5	330.9	1.5	15.60	16.9
Febru-	424.4	365.2	357.5	469.3	493.8	490.2	310.3	384.0	365.4	337.8	332.4	372.4	202.0	274.7	330.9	288.0	335.2	1.6	15.70	16.7
March	431.8	368.8	360.5	475.8	503.6	499.9	315.1	389.7	370.4	342.3	336.8	377.9	203.8	278.3	335.4	291.7	339.7	1.7	15.92	16.5
April	439.4	373.3	364.6	482.5	513.6	509.8	320.2	395.6	375.5	347.0	341.3	383.7	205.8	282.1	339.9	295.5	344.4	1.8	16.82	16.4
May	447.2	380.3	371.8	489.2	524.0	520.1	325.4	401.6	380.7	351.9	346.1	389.7	207.8	286.1	344.8	299.3	349.2	1.8	17.71	16.4
June	455.4	386.2	377.6	496.2	534.7	530.7	330.9	407.8	386.1	357.0	351.0	396.0	210.0	290.2	349.8	303.3	354.3	1.8	18.60	16.5
July	463.6	393.0	384.3	503.1	545.6	541.5	336.4	414.2	391.6	362.1	356.0	402.4	212.2	294.3	355.0	307.3	359.4	1.8	19.64	16.8

**Table 3 Urban Consumer Price Index (Base November**

	All Items	All Items less Farm Produce.	All Items less Farm Produce and Energy	Imported Food	Food & Non-Alcoholic Bev.	Alcoholic Beverages, Tobacco and Kola	Clothing and Footwear	Housing, Water, Electricity, Gas and Other Fuel	Furnishings & Household Equipment Maintenance.	Health, Transportation	Communication	Recreation & Culture.	Restaurant & Hotels	Miscellaneous Goods & Services	Month-on-month (%)	Year-on-year (%)	12-month average (%)			
<b>Weights</b>	<b>1000.0</b>	<b>552.64</b>	<b>418.67</b>	<b>155.45</b>	<b>476.88</b>	<b>490.59</b>	<b>11.19</b>	<b>65.50</b>	<b>191.51</b>	<b>49.81</b>	<b>27.40</b>	<b>74.54</b>	<b>10.14</b>	<b>7.14</b>	<b>40.05</b>	<b>14.49</b>	<b>17.65</b>			
2021 January	370.4	323.3	314.2	402.4	425.1	421.3	265.9	340.2	340.2	297.6	295.5	346.3	183.0	249.6	295.0	262.8	301.9	1.52	17.03	14.23
February	376.3	326.6	317.4	407.8	433.5	429.6	269.1	344.6	343.2	301.1	299.7	351.0	184.6	252.3	298.1	265.5	305.4	1.58	17.92	14.66
March	382.3	330.7	321.4	413.3	442.2	438.2	272.5	348.9	346.2	304.8	303.9	355.7	186.3	255.1	301.2	268.1	309.0	1.60	18.76	15.15
April	386.1	333.6	324.4	418.8	446.7	442.6	275.4	353.0	348.7	308.4	307.5	359.8	188.0	257.9	304.0	270.8	312.5	0.99	18.68	15.63
May	390.1	338.4	329.6	424.4	451.6	447.5	278.2	357.3	351.2	311.9	311.1	363.8	189.6	260.7	306.9	273.7	316.0	1.04	18.51	16.09
June	394.4	341.8	333.0	430.1	456.9	452.7	281.1	361.9	353.8	315.7	314.7	368.0	191.4	263.7	310.2	276.7	319.6	1.09	18.35	16.51
July	398.2	346.3	337.8	435.9	461.2	456.9	284.0	366.4	356.7	319.4	318.5	372.3	193.1	266.7	313.5	279.6	323.3	0.98	18.01	16.89
August	402.5	349.7	341.1	441.8	466.3	462.0	286.7	370.8	359.7	323.1	321.8	376.6	194.8	269.6	316.9	282.6	326.8	1.06	17.59	17.19
September	407.3	354.2	345.9	447.9	472.6	468.2	289.7	375.1	362.7	326.8	325.2	381.2	196.5	272.4	320.4	285.7	330.5	1.21	17.19	17.41
October	411.5	358.4	350.3	454.0	477.0	472.6	293.0	379.9	366.0	331.0	329.1	386.3	198.3	275.3	324.1	289.0	334.3	1.02	16.52	17.53
November	416.1	362.4	354.0	460.2	482.4	477.9	296.3	384.4	369.5	335.1	332.9	391.2	200.0	278.6	327.8	292.6	338.8	1.12	15.92	17.55
December	423.8	366.8	358.1	466.5	493.7	489.0	300.9	389.9	374.1	339.3	337.0	396.4	201.8	282.3	331.8	296.1	343.2	1.87	16.17	17.52
2022 January	430.3	371.1	362.1	473.0	502.3	497.5	305.6	395.4	378.4	343.7	341.2	401.6	203.7	286.1	336.0	299.8	347.9	1.53	16.17	17.44
February	437.4	376.4	367.4	479.7	512.0	507.1	310.4	401.1	382.9	348.2	345.6	407.2	205.6	289.9	340.3	303.5	352.8	1.65	16.25	17.29
March	445.1	381.6	372.3	486.5	522.5	517.4	315.4	407.2	387.9	353.0	350.3	413.6	207.7	293.8	345.1	307.5	357.9	1.76	16.44	17.10
April	453.1	386.4	376.9	493.6	533.3	528.0	320.7	413.5	393.0	358.1	355.2	420.3	209.8	297.9	349.9	311.5	363.1	1.78	17.35	17.01
May	461.3	393.8	384.4	500.7	544.4	539.0	326.1	420.0	398.2	363.3	360.3	427.3	212.1	302.2	355.2	315.7	368.5	1.81	18.24	17.00
June	469.7	399.2	389.6	507.9	555.8	550.2	331.6	426.6	403.5	368.7	365.4	434.5	214.4	306.6	360.5	320.0	373.9	1.82	19.09	17.09
July	478.2	406.7	396.9	515.0	567.4	561.7	337.2	433.3	408.9	374.2	370.7	441.9	216.7	311.0	365.9	324.3	379.5	1.82	20.09	17.29



**Table 4 Rural Consumer Price Index (Base November 2009 =**

	All Items	All Items less Farm Produce.	All Items less Farm Produce and Energy	Im-ported Food	Food & Non-Alcoholic Bev.	Alcoholic Beverage, Tobacco and Kola	Clothing and Footwear	Housing, Water, Electricity, Gas and Other Fuel	Furnishings & Household Equipment Maintenance.	Health.	Transportation	Communication	Recreation & Culture.	Education	Res-taurant & Hotels	Mis-cellaneous Goods & Services	Month-on-month (%)	Year-on-year (%)	12-month average (%)
<b>Weights</b>	<b>1000.00</b>	<b>480.09</b>	<b>394.61</b>	<b>114.03</b>	<b>532.25</b>	<b>540.89</b>	<b>10.61</b>	<b>147.16</b>	<b>50.72</b>	<b>32.25</b>	<b>57.19</b>	<b>4.01</b>	<b>6.65</b>	<b>38.93</b>	<b>10.14</b>	<b>15.78</b>			
2021 January	353.4	310.8	304.6	387.4	404.9	402.8	271.0	308.3	286.3	278.1	289.8	177.6	228.3	283.4	241.1	279.0	1.46	15.92	13.04
February	358.7	315.0	309.0	392.4	412.2	410.0	273.8	311.2	289.3	281.7	293.2	179.0	230.5	286.1	243.3	282.0	1.50	16.77	13.48
March	364.2	317.9	311.6	397.6	419.7	417.4	276.7	314.2	292.3	285.3	296.8	180.4	232.8	288.9	245.5	285.0	1.52	17.60	13.99
April	367.7	321.3	315.4	402.8	423.7	421.5	279.5	316.3	295.5	288.4	299.8	181.8	235.2	291.5	247.9	288.0	0.95	17.57	14.48
May	371.3	324.7	318.8	408.1	428.0	425.7	282.2	318.5	298.7	291.5	303.0	183.3	237.6	294.1	250.3	291.0	0.98	17.36	14.94
June	375.1	326.8	320.9	413.5	432.6	430.3	284.9	320.8	302.0	294.6	306.2	184.7	239.9	296.9	252.8	294.1	1.02	17.16	15.36
July	378.3	331.1	325.5	419.0	436.0	433.7	287.5	323.6	305.4	297.8	309.4	186.2	242.3	299.7	255.3	297.2	0.87	16.75	15.73
August	382.1	333.1	327.0	424.7	440.4	438.1	289.9	326.3	308.2	300.7	312.5	187.7	244.6	302.6	257.7	300.2	0.99	16.43	16.03
September	386.3	337.1	331.0	430.4	445.6	443.2	292.7	329.2	311.4	303.7	315.8	189.1	246.9	305.6	260.2	303.1	1.10	16.08	16.26
October	389.9	338.6	332.4	436.3	449.5	447.1	295.7	332.3	315.0	307.0	319.6	190.6	249.3	308.7	262.9	306.2	0.95	15.48	16.39
November	394.0	343.3	337.0	442.2	454.1	451.7	298.5	335.7	318.6	310.4	323.3	192.1	251.8	311.9	265.7	309.6	1.04	14.89	16.42
December	401.0	346.8	340.3	448.2	463.6	461.0	302.8	340.3	322.3	314.0	327.1	193.7	254.9	315.5	268.7	313.2	1.77	15.11	16.40
2022 January	406.7	351.5	344.9	454.3	470.6	466.0	307.1	344.6	326.1	317.8	331.1	195.3	258.2	319.2	271.9	316.9	1.42	15.06	16.37
February	413.2	355.8	349.2	460.6	479.1	476.5	311.5	349.1	330.0	321.7	335.2	196.9	261.5	323.0	275.2	320.6	1.61	15.18	16.18
March	420.3	358.0	350.6	466.9	488.4	485.7	316.2	354.1	334.3	325.8	340.0	198.5	265.0	327.3	278.6	324.7	1.73	15.42	16.00
April	427.7	362.2	354.4	473.2	497.9	495.1	321.1	359.3	338.8	330.0	344.8	200.2	268.5	331.6	282.2	328.9	1.74	16.32	15.91
May	435.2	368.9	361.3	479.7	507.6	504.7	326.2	364.6	343.4	334.5	349.8	202.1	272.2	336.1	285.8	333.2	1.76	17.21	15.97
June	443.0	375.3	367.7	486.4	517.8	514.8	331.6	370.0	348.2	339.2	355.3	204.1	276.1	340.9	289.5	337.9	1.81	18.13	16.02
July	451.1	381.4	373.8	493.1	528.2	525.1	337.0	375.6	353.1	344.0	360.8	206.1	279.9	345.8	293.3	342.7	1.81	19.22	16.25

**Table 5 Combined Urban And Rural State Consumer Price Index (Base Period: November 2009 = 100)**

State	Jul-21		Jun-22		Jul-22		MoM		YoY	
	Food	All Items	Food	All Items	Food	All Items	Food	All Items	Food	All Items
	Abia	440.1	387.8	529.0	457.3	541.1	465.0	2.29	1.68	22.94
Abuja	435.9	376.7	525.8	439.9	536.5	452.4	2.05	2.84	23.09	20.10
Adamawa	436.8	377.6	521.1	436.3	530.6	448.8	1.82	2.87	21.48	18.87
Akwa Ibom	435.9	378.5	540.2	455.1	554.5	465.1	2.65	2.18	27.22	22.88
Anambra	446.8	396.5	525.3	466.2	532.8	473.8	1.42	1.63	19.25	19.50
Bauchi	396.5	448.9	466.2	536.7	473.8	541.1	1.63	0.82	19.50	20.54
Bayelsa	446.3	389.1	546.2	463.2	554.3	473.1	1.49	2.15	24.20	21.60
Benue	449.3	386.2	535.4	453.7	551.2	462.6	2.94	1.97	22.68	19.79
Borno	444.0	371.4	529.0	431.3	535.1	438.4	1.14	1.64	20.50	18.04
Cross River	454.0	359.9	547.1	424.0	560.1	431.2	2.38	1.69	23.37	19.81
Delta	452.0	365.9	539.3	427.9	558.8	438.0	3.61	2.37	23.63	19.71
Ebonyi	455.0	392.5	564.3	474.2	572.6	480.8	1.47	1.40	25.83	22.51
Edo	449.3	398.1	539.3	467.6	554.5	477.8	2.84	2.18	23.41	20.02
Ekiti	444.1	359.4	545.0	425.6	555.6	432.5	1.95	1.60	25.11	20.33
Enugu	457.3	370.3	545.2	430.6	555.7	437.7	1.94	1.64	21.52	18.18
Gombe	445.4	394.6	531.4	462.0	536.4	467.0	0.94	1.08	20.42	18.34
Imo	443.4	352.1	539.4	412.9	552.4	421.2	2.41	1.99	24.59	19.61
Jigawa	445.4	397.9	508.5	454.7	523.2	464.1	2.90	2.06	17.46	16.62
Kaduna	459.4	407.7	531.6	471.9	538.3	477.1	1.25	1.11	17.16	17.04
Kano	453.9	400.9	538.7	472.2	546.0	476.1	1.36	0.83	20.30	18.74
Katsina	431.4	354.6	510.2	412.3	521.6	422.1	2.23	2.37	20.90	19.02
Kebbi	456.1	416.8	540.0	488.8	553.1	499.7	2.42	2.22	21.27	19.88
Kogi	491.9	433.5	602.7	517.0	620.2	529.2	2.90	2.37	26.08	22.08
Kwara	464.2	455.3	577.6	531.9	600.1	543.5	3.90	2.19	29.28	19.37
Lagos	460.0	401.7	555.8	475.1	571.0	485.3	2.73	2.14	24.12	20.82
Nassarawa	447.4	396.1	529.5	464.4	540.0	471.7	1.97	1.57	20.70	19.09
Niger	441.5	396.5	532.6	469.9	538.6	474.7	1.13	1.03	21.99	19.72
Ogun	455.1	410.5	546.8	483.0	559.9	493.3	2.41	2.13	23.05	20.16
Ondo	448.7	396.9	547.0	473.1	559.5	481.5	2.29	1.79	24.69	21.32
Osun	448.6	388.0	531.8	449.5	543.3	458.1	2.16	1.92	21.09	18.08
Oyo	461.1	413.4	541.6	481.2	557.5	494.6	2.94	2.77	20.89	19.63
Plateau	447.6	399.2	533.9	471.3	543.0	478.7	1.71	1.57	21.32	19.91
Rivers	446.0	385.1	546.6	460.8	556.5	467.4	1.80	1.42	24.78	21.37
Sokoto	451.3	395.7	529.3	458.4	544.6	470.9	2.90	2.72	20.68	19.02
Taraba	445.8	382.2	531.2	447.2	531.9	451.9	0.14	1.07	19.32	18.25
Yobe	452.1	402.0	530.2	468.5	542.8	477.5	2.38	1.91	20.05	18.77
Zamfara	450.5	401.4	531.9	470.5	542.4	478.8	1.97	1.76	20.41	19.29

*Note: Indices may not be used for inter-state price comparison because market baskets differ from state to state*

# CONTACT



## National Bureau of Statistics

Head Office

Plot 762 Independence Avenue,  
Central Business District, Garki  
Abuja.

## Sunday J. Ichedi

Information Desk

Head, Communication & Public  
Relations Department (C&PRD)  
Phone: +2348037051701  
sjchedi@nigerianstat.gov.ng

## Moses Mathew

Statistical Information Officer

Phone: +2347069071157  
matmoses@nigerianstat.gov.ng

## Nuhu Joseph Waney II

Chief of Protocol

Phone: +2348037020063  
jwnuhu@nigerianstat.gov.ng



@nbsnigeria



NBSNigeria



Nbs\_nigeria

