



NATIONAL BUREAU OF STATISTICS

# Consumer Price Index

## June 2022

---

(BASE PERIOD NOVEMBER 2009 = 100)

**Report Date: July 2022**

**Data Source: National Bureau of Statistics (NBS)**

# CONTENT

Brief Methodology	3
All Item Index	7
Food Index	12
All Items Less Farm Produce	14
State Profile	15
Appendix	18
Contact	23

## BRIEF METHODOLOGY

The CPI measures the average change over time in the prices of goods and services consumed by people for day-to-day living. The construction of the CPI combines economic theory, sampling, and other statistical techniques using data from other surveys to produce a weighted measure of average price changes in the Nigerian economy. The weighting occurs to capture the importance of the selected commodities in the entire index. The production of the CPI requires the skills of economists, statisticians, computer scientists, data collectors, and others.

Key in the construction of the price index is the selection of the market basket of goods and services. Every month, 10,534 informants spread across the country provide price data for the computation of the CPI. The market items currently comprise 740 goods and services regularly priced. The first stage in the calculation of the CPI is the collection of prices on each item (740 goods and services) from outlets in each sector (rural or urban) for each state. Prices are then averaged for each item per sector across the state. The next step is to use the average price to calculate the basic index for each commodity: The current year price of each commodity is compared with a base year's price to obtain a relative price.

Next, we use the Laspeyres formula to compute an aggregated index for each class (which has a multitude of commodities that have similar consumption purposes): Here the sum of the product of weights (obtained from the expenditure survey) and relative prices for each item is divided by the sum of the weight of the items in that class, and the result multiplied by 100 gives the required index number. This index number is still classified according to the urban and rural sectors for each of the 36 states and the FCT. This yields 85 classes then 48 groups which are then reclassified into 12 Divisions to derive:

1. The Country Composite Index
2. The Urban National Index
3. The Rural National Index
4. The Combined Urban and Rural State Composite Index

The survey methodology generates 3774 all-items indices for all states and the FCT.

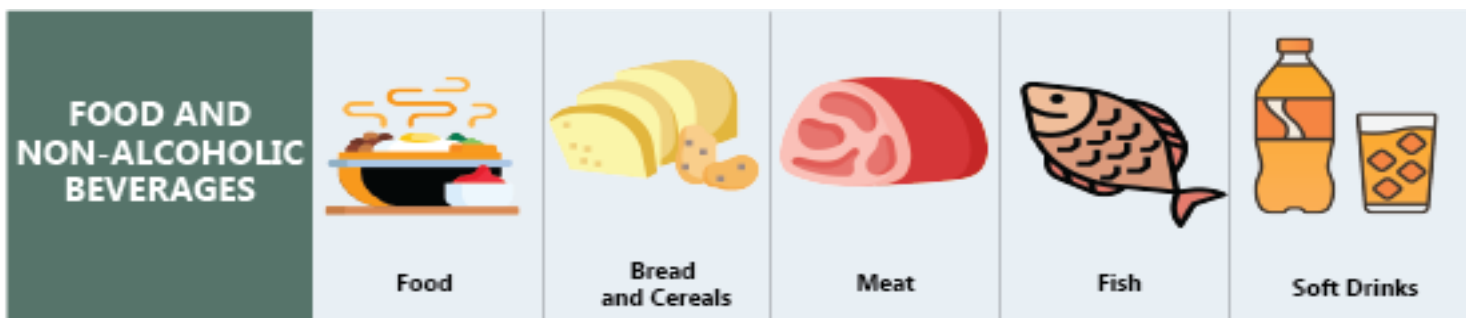
This edition of the Statistical News contains the revised Consumer Price Index (CPI) based on Nigeria Living Standard Survey (NLSS) 2003/2004. The consumption expenditure data were re-valued to November 2009, which is the base period for the revised CPI.

The May 2003 and September 1985-based indices are being continued using factors derived from the new CPI. These indices will yield the same price change for any commodity group contained in all the series.

A new sub-index Imported Food Index- is available in the revised CPI.

Note: The urban and rural indices were weighted with the ratio of their populations to the national i.e., 0.455 and 0.545 respectively to compute the composite indices at the 12 Classification of Individual Consumption by Purpose (COICOP) functions and all-items levels. This may cause a variance between a recalculated all items index using the weights and the All-Items index published because the weights were computed only from the consumption expenditure survey result.

The following breakdown highlights a non-exhaustive list of the components of the current CPI:



**HOUSING, WATER,  
ELECTRICITY  
AND GAS**



Actual and imputed  
rentals for housing



Water supply



Liquid fuel



Electricity



Gas

**FURNISHINGS,  
HOUSEHOLD  
EQUIPMENT**



Furniture and  
furnishings



Household textiles



Repair of  
household  
appliances



Carpets and other  
floor coverings



Non-durable  
household goods

**HEALTH**



Pharmaceutical  
products



Medical  
services



Dental  
services



Hospital  
services



Paramedical  
services

**TRANSPORT**



Motor cars



Motor cycles



Passenger  
transport by air



Passenger  
transport by road



Passenger  
transport by sea and  
inland waterways

**COMMUNICATION**



Postal services



Telephone and telefax  
equipment



Telephone and telefax  
services

## RECREATION AND CULTURE



Photographic development



Musical instrument



Recreational and sporting services



Games of chance



Audio-visual, photographic and information processing equipment

## EDUCATION



Books & stationery

## RESTAURANTS AND HOTELS



Accommodation services



Catering services

## MISCELLANEOUS GOODS AND SERVICES



Hairdressing salons and personal grooming establishments



Jewellery, clocks and watches



Appliances, articles and products for personal care



Insurance



Other services



## ALL ITEMS INDEX

In June 2022, the inflation rate increased to 18.60 percent on a year-on-year basis. This is 0.84 percent points higher compared to the rate recorded in June 2021, which is 17.75 percent. This means that the headline inflation rate increased in the month of June 2022 when compared to the same month in the previous year (i.e., June 2021). Increases were recorded in all COICOP divisions that yielded the Headline index.

On a month-on-month basis, the Headline inflation rate increased to 1.82 percent in June 2022, this is 0.03 percent higher than the rate recorded in May 2022 (1.78 percent)

The percentage change in the average composite CPI for the twelve months period ending June 2022 over the average of the CPI for the previous twelve months period is 16.54 percent, showing a 0.62 percent increase compared to 15.93 percent recorded in June 2021.

In the month of June 2022, the urban inflation rate increased to 19.09 percent (year-on-year); this is a 0.74 percent increase compared to 18.35 percent recorded in June 2021. On a month-on-month basis, the urban inflation rate rose to 1.82 percent in June 2022, this is a 0.01 percent increase compared to May 2022 (1.81 percent). The corresponding twelve-month average percentage change for the urban index is 17.09 percent in 2022. This is 0.58 percent higher compared to 16.51 percent reported in June 2021.

The rural inflation rate increased to 18.13 percent in June 2022 (year-on-year) basis; this is a 0.97 percent increase compared to 17.16 recorded in June 2021. On a month-on-month basis, the rural index rose to 1.81 percent in June 2022, up by 0.05 percent from the rate recorded in May 2022 (1.76 percent), while the corresponding twelve-month average percentage change for the rural inflation rate in June 2022 is 16.02 percent. This is 0.66 percent higher compared to 15.36 percent recorded in June 2021.



NATIONAL BUREAU OF STATISTICS

## HEADLINE CPI IN JUNE 2022 ROSE BY

**18.60%**

**YEAR-ON-YEAR**

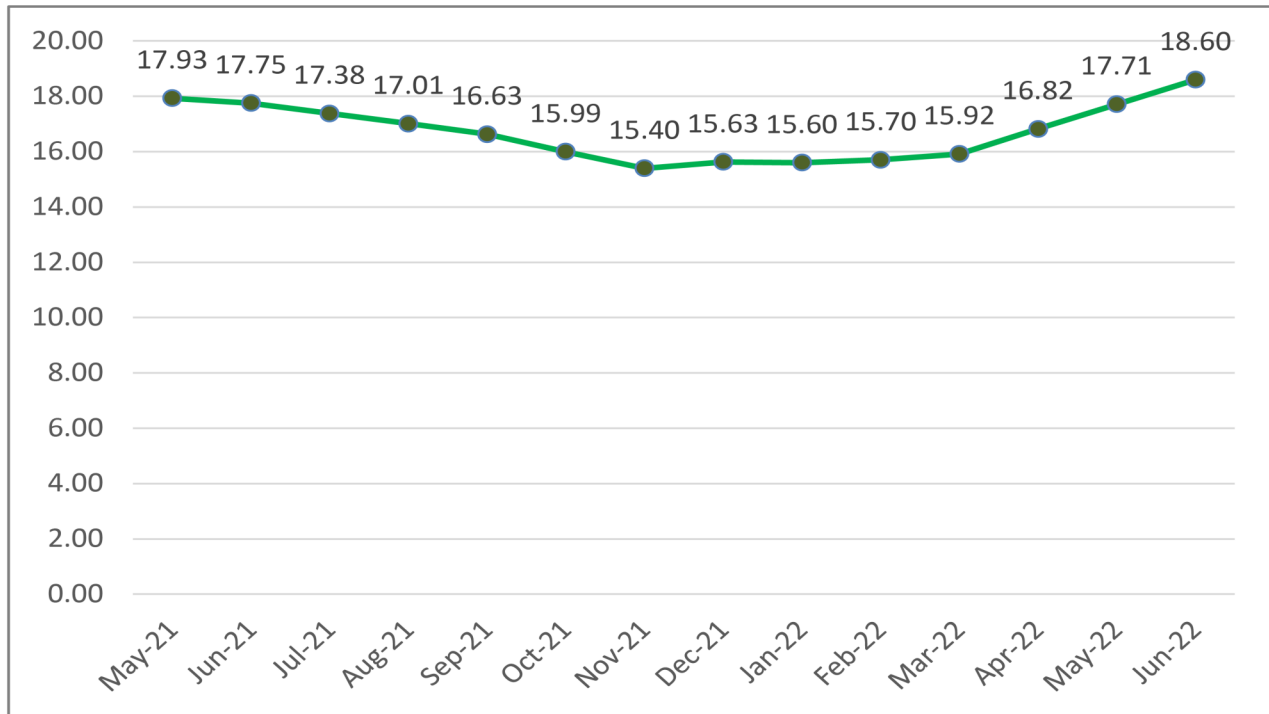
**(FROM 17.75% IN JUNE 2021)**

**1.82%**

**MONTH-ON-MONTH**

**(FROM 1.78% IN MAY 2022)**

### CPI (%) HEADLINE 12-MONTH SERIES



**The CPI (Consumer Price Index) measures the average change over time in prices of goods and services consumed by people for day-to-day living i.e it measures the inflation rate**





NATIONAL BUREAU OF STATISTICS

## URBAN

**19.09%**

YEAR-ON-YEAR

(FROM 18.35% IN JUNE 2021)

**1.82%**

MONTH-ON-MONTH

(FROM 1.81% IN MAY 2022)



## URBAN AND RURAL INDEX



## RURAL

**18.13%**

YEAR-ON-YEAR

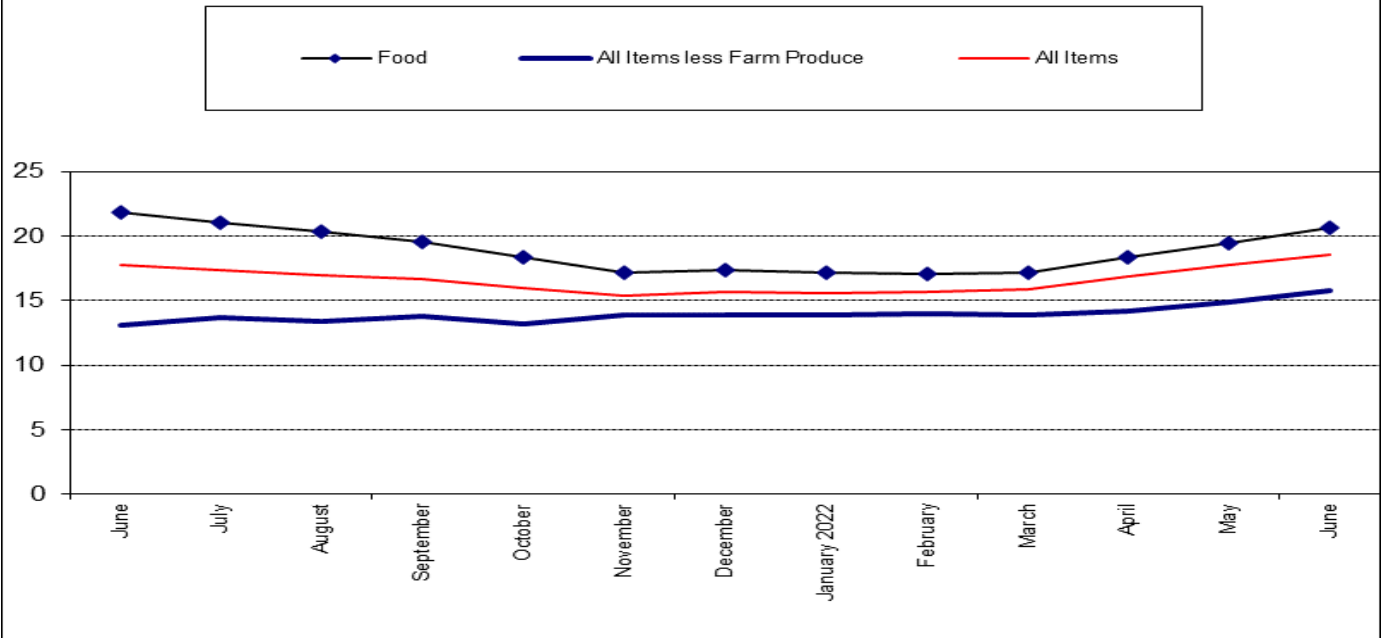
(FROM 17.16% IN JUNE 2021)

**1.81%**

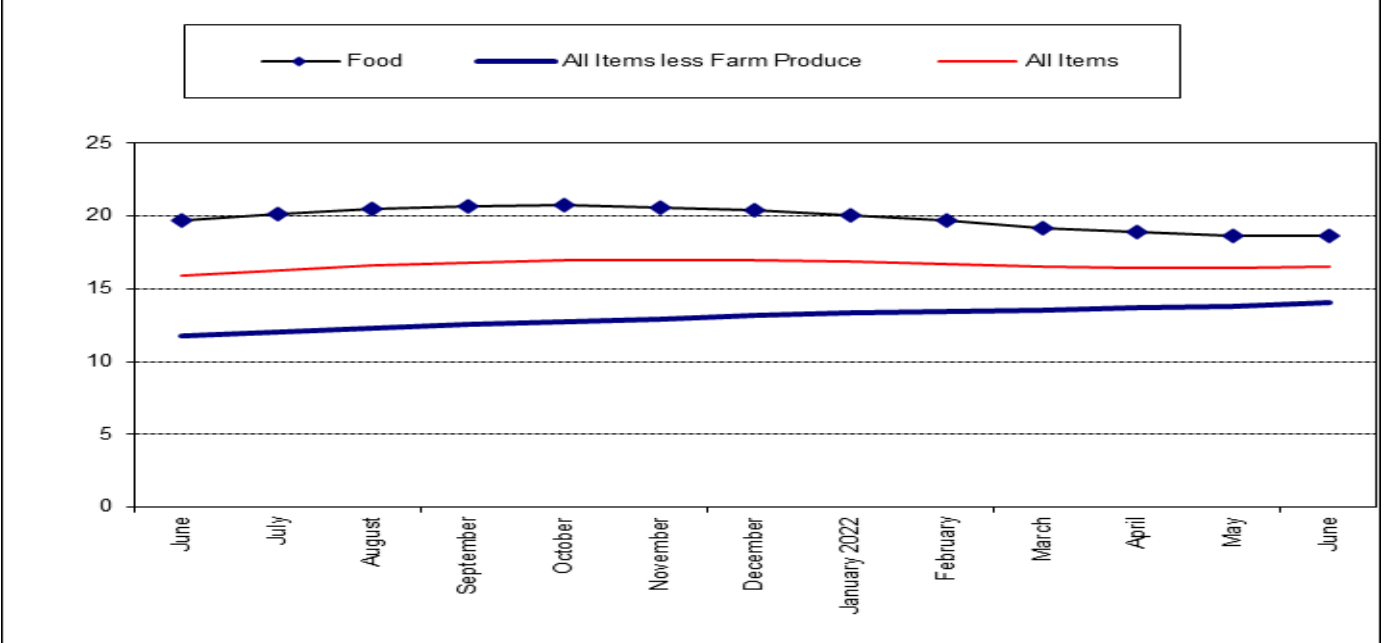
MONTH-ON-MONTH

(FROM 1.76% IN MAY 2022)

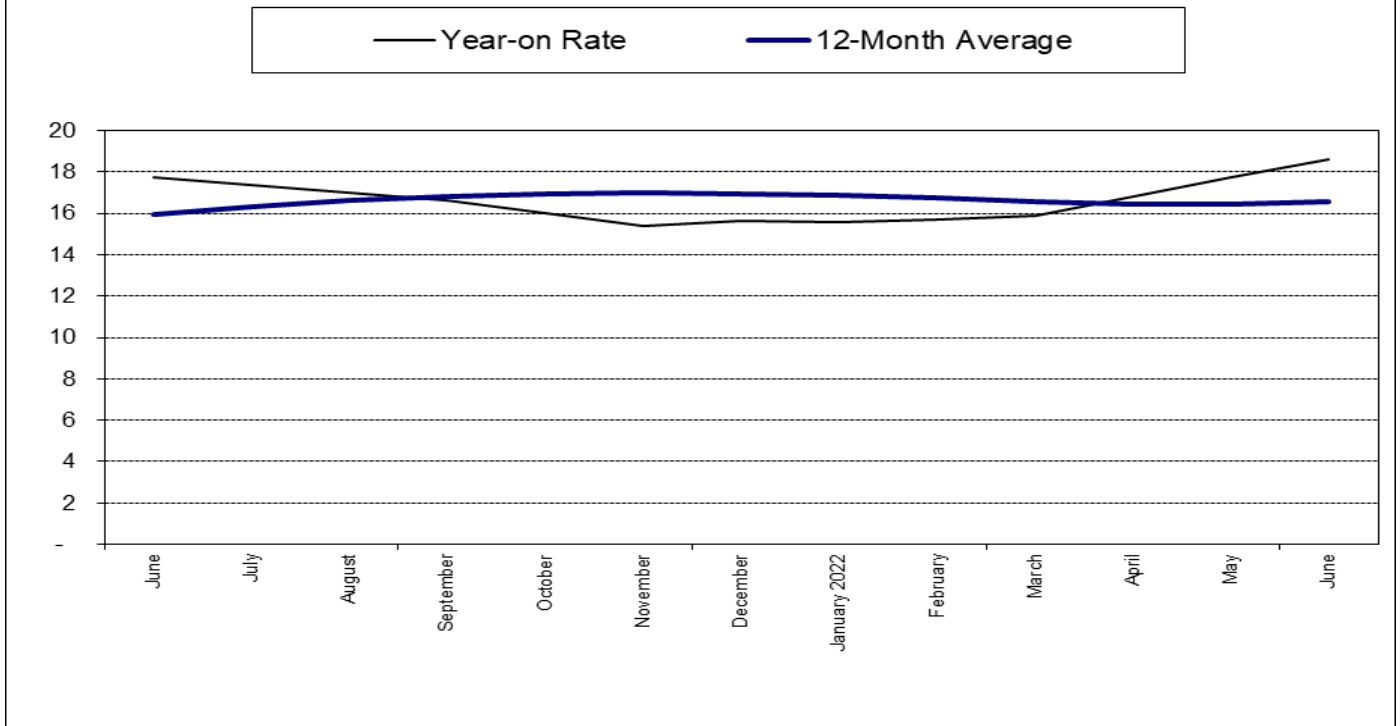
### 1. Inflation: Composite Year-on Change (%)



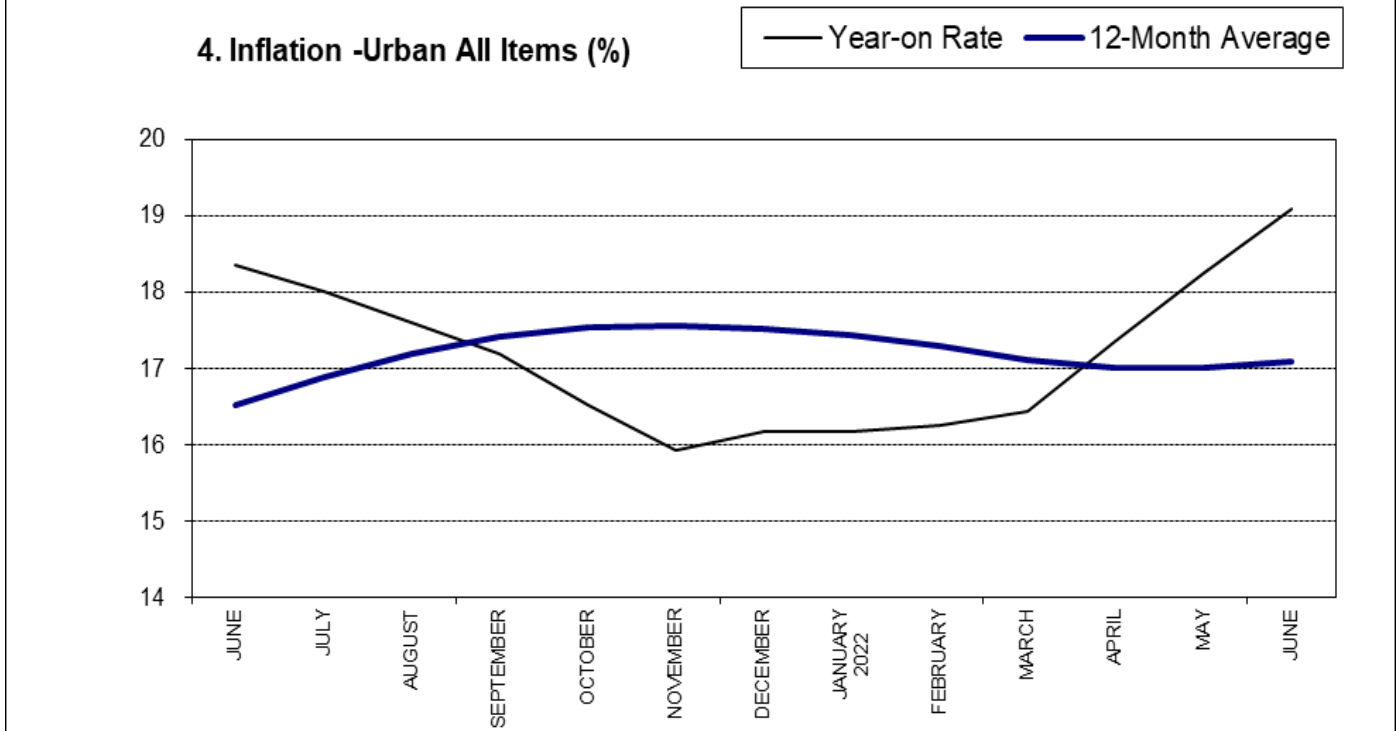
### 2. Inflation: Composite 12-Month Average Change (%)



### 3. Inflation -Composite All Items (%)



### 4. Inflation -Urban All Items (%)

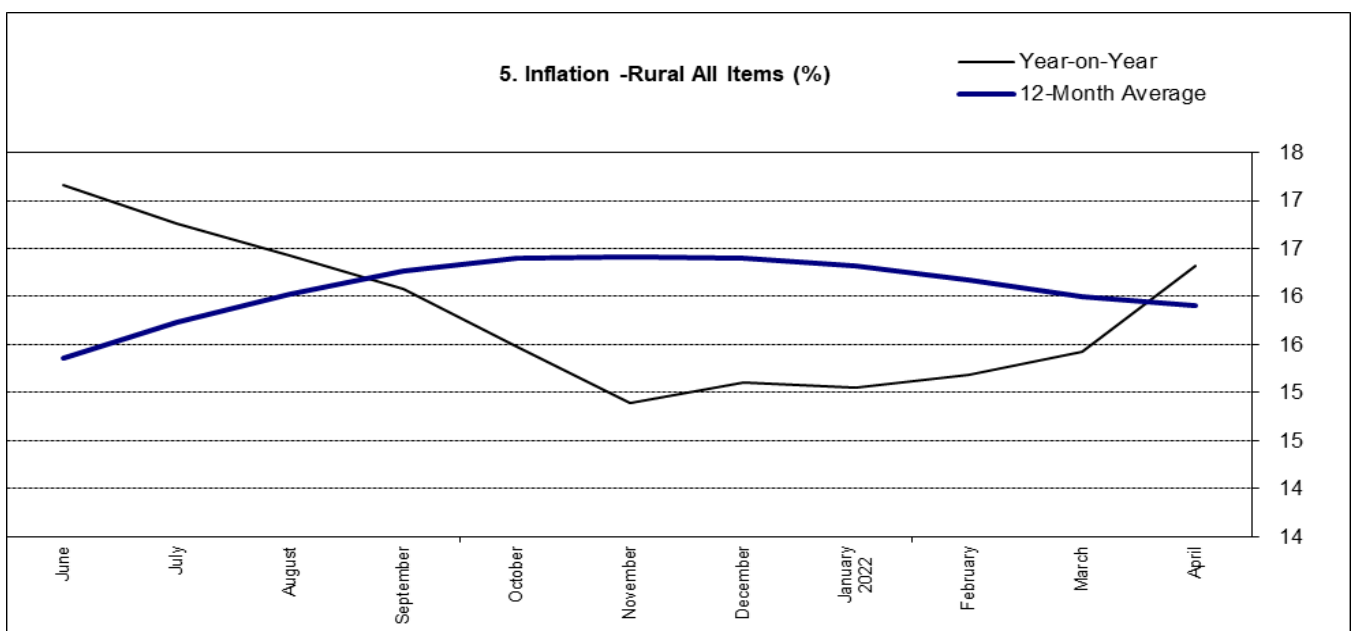


## FOOD INDEX

The composite food index rose to 20.60 percent in June 2022 on a year-on-year basis; the rate of changes in average price level declined by 1.23 percent compared to 21.83 percent in June 2021. The rate of changes in food prices compared to the same period last year was higher due to higher foods prices volatility caused by COVID 19. This rise in the food index was caused by increases in prices of Bread and cereals, Food products n.e.c, Potatoes, yam, and other tubers, Meat, Fish, Oil and fat, and Wine.

On a month-on-month basis, the food sub-index increased to 2.05 percent in June 2022, up by 0.03 percent points from 2.01 percent recorded in May 2022.

The average annual rate of change of the Food sub-index for the twelve-month period ending June 2022 over the previous twelve-month average is 18.62 percent, which is 1.10 percent points decline from the average annual rate of change recorded in June 2021 (19.72 percent).





NATIONAL BUREAU OF STATISTICS

## FOOD SUB-INDEX IN JUNE 2022 ROSE BY

**20.60%**

YEAR-ON-YEAR  
(FROM 21.83% IN JUNE 2021)

**2.05%**

MONTH-ON-MONTH  
(FROM 2.01% IN MAY 2022)

## CORE SUB-INDEX IN JUNE 2022 ROSE BY

**15.75%**

YEAR-ON-YEAR  
(FROM 13.09% IN JUNE 2021)

**1.56%**

MONTH-ON-MONTH  
(FROM 1.87% IN MAY 2022)

## ALL ITEMS LESS FARM PRODUCE

The “All items less farm produce” or Core inflation, which excludes the prices of volatile agricultural produce stood at 15.75 percent in June 2022 on a year-on-year basis, up by 2.66 percent when compared to 13.09 percent recorded in June 2021.

On a month-on-month basis, the core sub-index increased to 1.56 percent in June 2022. This is down by 0.31 percent when compared to 1.87 percent recorded in May 2022.

The highest increases were recorded in prices of Gas, Liquid fuel, Solid fuel, Garments, Passenger transport by road, Cleaning, Repair and Hire of clothing, Passenger travel by Air

The average 12-month annual rate of change of the index was 14.06 percent for the twelve-month period ending June 2022; this is 2.31 percent points higher than the 11.75 percent recorded in June 2021.



## STATE PROFILES

In analysing price movements under this section, it should be noted that CPI is weighted by consumption expenditure patterns that differ across states and locations. Accordingly, the weight assigned to a particular food or non-food item may differ from state to state making interstate comparisons of consumption basket inadvisable and potentially misleading.

### **All Items Inflation**

In June 2022, all items inflation on a year-on-year basis was highest in Bauchi (21.99%), Kogi (21.37%), Ebonyi (20.73%) while Adamawa (16.14%), Sokoto (16.31%) and Jigawa (16.37%) recorded the slowest rise in headline Year-on-Year inflation.

On a month-on-month basis, however, June 2022, recorded the highest increases in Kogi (2.69%), Ondo (2.65%), and Kaduna (2.61%), while Adamawa (-0.26%), Abuja (-0.03%) and Sokoto (0.79%) recorded the slowest rise on month-on-month inflation.

### **Food Inflation**

In June 2022, food inflation on a year-on-year basis was highest in Kwara (25.62%), Kogi (24.81%), and River (24.34%), while Jigawa (16.01%), Sokoto (16.24%) and Kaduna (17.75%) recorded the slowest rise in year-on-year food inflation.

On a month-on-month basis, however, in June 2022 food inflation was highest in Ebonyi (3.52%), Bayelsa (3.27%), and Ondo (3.25%), while Sokoto (0.11%), Taraba (0.94%) and Adamawa (1.22%) recorded the slowest rise on month-on-month inflation.

## ALL ITEMS INFLATION

### YEAR-ON-YEAR

#### HIGHEST RISE IN

<b>BAUCHI</b>	▶	<b>21.99%</b>
<b>KOGI</b>	▶	<b>21.37%</b>
<b>EBONYI</b>	▶	<b>20.73%</b>

#### SLOWEST RISE IN

<b>ADAMAWA</b>	▶	<b>16.14%</b>
<b>SOKOTO</b>	▶	<b>16.31%</b>
<b>JIGAWA</b>	▶	<b>16.37%</b>

### MONTH-ON-MONTH

#### HIGHEST RISE IN

<b>KOGI</b>	▶	<b>2.69%</b>
<b>ONDO</b>	▶	<b>2.65%</b>
<b>KADUNA</b>	▶	<b>2.61%</b>

#### SLOWEST RISE IN

<b>ADAMAWA</b>	▶	<b>-0.26%</b>
<b>FCT</b>	▶	<b>-0.03%</b>
<b>SOKOTO</b>	▶	<b>0.79%</b>

## FOOD INFLATION

### YEAR-ON-YEAR

#### HIGHEST RISE IN

<b>KWARA</b>	▶	<b>25.62%</b>
<b>KOGI</b>	▶	<b>24.81%</b>
<b>RIVERS</b>	▶	<b>24.34%</b>

#### SLOWEST RISE IN

<b>JIGAWA</b>	▶	<b>16.01%</b>
<b>SOKOTO</b>	▶	<b>16.24%</b>
<b>KADUNA</b>	▶	<b>17.75%</b>

### MONTH-ON-MONTH

#### HIGHEST RISE IN

<b>EBONYI</b>	▶	<b>3.52%</b>
<b>BAYELSA</b>	▶	<b>3.27%</b>
<b>ONDO</b>	▶	<b>3.25%</b>

#### SLOWEST RISE IN

<b>SOKOTO</b>	▶	<b>0.11%</b>
<b>TARABA</b>	▶	<b>0.94%</b>
<b>ADAMAWA</b>	▶	<b>1.22%</b>

# APPENDIX

**Table 1 Composite Consumer Price Index (Base November 2009 = 100)**

	All Items Index				All Items less Farm Pro-				Food							
	Monthly	12-Month Average	Month-on change (%)	Year-on change (%)	12-Month average change (%)	Monthly	12-Month Average	Month-on change (%)	Year-on change (%)	12-Month average change (%)	Monthly	12-Month Average	Month-on change (%)	Year-on change (%)	12-Month average change (%)	
2021	January	361.2	334.2	1.49	16.47	13.62	316.5	299.6	1.26	11.85	10.52	413.8	375.7	1.83	20.57	16.66
	Febru-	366.8	338.8	1.54	17.33	14.05	320.3	302.6	1.21	12.38	10.77	421.6	382.0	1.89	21.79	17.25
	March	372.5	343.5	1.56	18.17	14.55	323.7	305.6	1.06	12.67	11.01	429.7	388.7	1.90	22.95	17.93
	April	376.1	348.3	0.97	18.12	15.04	326.9	308.7	0.99	12.74	11.25	433.9	395.3	0.99	22.72	18.58
	May	379.9	353.2	1.01	17.93	15.50	331.0	311.9	1.24	13.15	11.50	438.5	402.0	1.05	22.28	19.18
	June	384.0	358.0	1.06	17.75	15.93	333.6	315.1	0.81	13.09	11.75	443.4	408.6	1.11	21.83	19.72
	July	387.5	362.8	0.93	17.38	16.30	338.0	318.5	1.31	13.72	12.05	447.2	415.1	0.86	21.03	20.16
	August	391.5	367.5	1.02	17.01	16.60	340.6	321.9	0.77	13.41	12.29	451.9	421.5	1.06	20.30	20.50
	Septem-	396.0	372.2	1.15	16.63	16.83	344.8	325.3	1.24	13.74	12.55	457.6	427.7	1.26	19.57	20.71
	October	399.9	376.8	0.98	15.99	16.96	347.6	328.7	0.80	13.24	12.73	461.8	433.7	0.91	18.34	20.75
	Novem-	404.2	381.3	1.08	15.40	16.98	352.0	332.3	1.26	13.85	12.96	466.7	439.4	1.07	17.21	20.62
	Decem-	411.5	385.9	1.82	15.63	16.95	355.9	335.9	1.12	13.87	13.16	477.0	445.3	2.19	17.37	20.40
2022	January	417.6	390.6	1.47	15.60	16.87	360.4	339.6	1.25	13.87	13.33	484.7	451.2	1.62	17.13	20.09
	Febru-	424.4	395.4	1.63	15.70	16.73	365.2	343.3	1.33	14.01	13.46	493.8	457.2	1.87	17.11	19.69
	March	431.8	400.4	1.74	15.92	16.54	368.8	347.1	0.98	13.91	13.56	503.6	463.3	1.99	17.20	19.21
	April	439.4	405.6	1.76	16.82	16.45	373.3	350.9	1.22	14.18	13.68	513.6	470.0	2.00	18.37	18.88
	May	447.2	411.2	1.78	17.71	16.45	380.3	355.0	1.87	14.90	13.83	524.0	477.1	2.01	19.50	18.68
	June	455.4	417.2	1.82	18.60	16.54	386.2	359.4	1.56	15.75	14.06	534.7	484.7	2.05	20.60	18.62

Table 2 Composite Consumer Price Index (Base November 2009 = 100)																				
	All Items	All Items less Farm Produce.	All Items less Farm Produce and Energy	Imported Food	Food & Non-Alcoholic Bev.	Alcoholic Beverages and Tobacco and Kola	Clothing and Footwear	Housing, Water, Electricity, Gas and Other Fuel	Furniture & Household Equipment Maintenance.	Health.	Transport	Communication	Recreation & Culture.	Education	Restaurants & Hotels	Miscellaneous Goods & Services	Month-on (%)	Year-on (%)	12-month average (%)	
Weight	1000.0	513.10	405.55	132.88	507.06	518.00	10.87	76.50	167.34	50.30	30.04	65.08	6.80	6.87	39.44	12.12	16.63			
2021	361.2	316.5	309.0	394.2	413.8	411.0	266.0	328.1	323.9	291.0	285.9	319.4	181.1	238.2	288.7	250.9	289.4	1.5	16.47	13.6
January	366.8	320.3	312.8	399.4	421.6	418.7	271.0	331.9	326.8	294.2	289.7	323.5	182.6	240.6	291.6	253.3	292.6	1.5	17.33	14.1
February	372.5	323.7	316.1	404.8	429.7	426.7	274.1	335.7	329.8	297.5	293.6	327.6	184.1	243.1	294.5	255.8	295.9	1.6	18.17	14.6
March	376.1	326.9	319.5	410.1	433.9	430.9	277.0	339.6	332.1	300.9	296.9	331.2	185.7	245.7	297.2	258.3	299.1	1.0	18.12	15.0
April	379.9	331.0	323.7	415.5	438.5	435.4	279.7	343.5	334.4	304.3	300.2	334.8	187.2	248.3	299.9	260.9	302.4	1.0	17.93	15.5
May	384.0	333.6	326.4	421.1	443.4	440.3	282.6	347.6	336.9	307.8	303.6	338.5	188.8	251.0	302.9	263.6	305.7	1.1	17.75	15.9
June	387.5	338.0	331.1	426.7	447.2	444.1	285.3	351.8	339.7	311.3	307.0	342.3	190.4	253.6	306.0	266.3	309.0	0.9	17.38	16.3
July	391.5	340.6	333.4	432.5	451.9	448.8	287.8	355.7	342.5	314.5	310.1	346.0	192.0	256.2	309.1	269.0	312.2	1.0	17.01	16.6
August	396.0	344.8	337.8	438.4	457.6	454.4	290.7	359.7	345.4	317.9	313.3	349.8	193.6	258.7	312.3	271.8	315.5	1.1	16.63	16.8
September	399.9	347.6	340.5	444.3	461.8	458.5	293.8	364.0	348.7	321.8	316.9	354.2	195.2	261.3	315.7	274.7	318.9	1.0	15.99	17.0
October	404.2	352.0	344.7	450.4	466.7	463.4	296.9	368.2	352.1	325.6	320.4	358.5	196.8	264.2	319.1	277.9	322.8	1.1	15.40	17.0
November	411.5	355.9	348.4	456.5	477.0	473.5	301.3	373.3	356.7	329.6	324.3	363.0	198.5	267.6	322.9	281.1	326.8	1.8	15.63	17.0
December	417.6	360.4	352.7	462.8	484.7	481.2	305.7	378.6	361.0	333.6	328.3	367.6	200.2	271.1	326.8	284.5	330.9	1.5	15.60	16.9
2022	424.4	365.2	357.5	469.3	493.8	490.2	310.3	384.0	365.4	337.8	332.4	372.4	202.0	274.7	330.9	288.0	335.2	1.6	15.70	16.7
January	431.8	368.8	360.5	475.8	503.6	499.9	315.1	389.7	370.4	342.3	336.8	377.9	203.8	278.3	335.4	291.7	339.7	1.7	15.92	16.5
February	439.4	373.3	364.6	482.5	513.6	509.8	320.2	395.6	375.5	347.0	341.3	383.7	205.8	282.1	339.9	295.5	344.4	1.8	16.82	16.4
March	447.2	380.3	371.8	489.2	524.0	520.1	325.4	401.6	380.7	351.9	346.1	389.7	207.8	286.1	344.8	299.3	349.2	1.8	17.71	16.4
April	455.4	386.2	377.6	496.2	534.7	530.7	330.9	407.8	386.1	357.0	351.0	396.0	210.0	290.2	349.8	303.3	354.3	1.8	18.60	16.5
May																				
June																				

Table 3 Urban Consumer Price Index (Base November 2009 = 100)																				
	All Items	All Items less Farm Produce and Energy	Imported Food	Food & Non-Alcoholic Bev.	Alcoholic Beverage, Tobacco and Kola	Clothing and Footwear	Housing, Electricity, Gas and Other Fuel	Furniture & Household Equipment Maintenance	Health.	Transportation	Communication	Recreation & Culture.	Education	Restaurants & Hotels	Miscellaneous Goods & Services	Month-on (%)	Year-on (%)	12-month average (%)		
<b>Weigh</b>	1000.0	552.64	418.67	155.45	476.88	490.59	11.19	65.50	191.51	49.81	27.40	74.54	10.14	7.14	40.05	14.49	17.65			
2021	370.4	323.3	314.2	402.4	425.1	421.3	265.9	340.2	340.2	297.6	295.5	346.3	183.0	249.6	295.0	262.8	301.9	1.52	17.03	14.23
January	376.3	326.6	317.4	407.8	433.5	429.6	269.1	344.6	343.2	301.1	299.7	351.0	184.6	252.3	298.1	265.5	305.4	1.58	17.92	14.66
February	382.3	330.7	321.4	413.3	442.2	438.2	272.5	348.9	346.2	304.8	303.9	355.7	186.3	255.1	301.2	268.1	309.0	1.60	18.76	15.15
March	386.1	333.6	324.4	418.8	446.7	442.6	275.4	353.0	348.7	308.4	307.5	359.8	188.0	257.9	304.0	270.8	312.5	0.99	18.68	15.63
April	390.1	338.4	329.6	424.4	451.6	447.5	278.2	357.3	351.2	311.9	311.1	363.8	189.6	260.7	306.9	273.7	316.0	1.04	18.51	16.09
May	394.4	341.8	333.0	430.1	456.9	452.7	281.1	361.9	353.8	315.7	314.7	368.0	191.4	263.7	310.2	276.7	319.6	1.09	18.35	16.51
June	398.2	346.3	337.8	435.9	461.2	456.9	284.0	366.4	356.7	319.4	318.5	372.3	193.1	266.7	313.5	279.6	323.3	0.98	18.01	16.89
July	402.5	349.7	341.1	441.8	466.3	462.0	286.7	370.8	359.7	323.1	321.8	376.6	194.8	269.6	316.9	282.6	326.8	1.06	17.59	17.19
August	407.3	354.2	345.9	447.9	472.6	468.2	289.7	375.1	362.7	326.8	325.2	381.2	196.5	272.4	320.4	285.7	330.5	1.21	17.19	17.41
September	411.5	358.4	350.3	454.0	477.0	472.6	293.0	379.9	366.0	331.0	329.1	386.3	198.3	275.3	324.1	289.0	334.3	1.02	16.52	17.53
October	416.1	362.4	354.0	460.2	482.4	477.9	296.3	384.4	369.5	335.1	332.9	391.2	200.0	278.6	327.8	292.6	338.8	1.12	15.92	17.55
November	423.8	366.8	358.1	466.5	493.7	489.0	300.9	389.9	374.1	339.3	337.0	396.4	201.8	282.3	331.8	296.1	343.2	1.87	16.17	17.52
December	430.3	371.1	362.1	473.0	502.3	497.5	305.6	395.4	378.4	343.7	341.2	401.6	203.7	286.1	336.0	299.8	347.9	1.53	16.17	17.44
2022	437.4	376.4	367.4	479.7	512.0	507.1	310.4	401.1	382.9	348.2	345.6	407.2	205.6	289.9	340.3	303.5	352.8	1.65	16.25	17.29
January	445.1	381.6	372.3	486.5	522.5	517.4	315.4	407.2	387.9	353.0	350.3	413.6	207.7	293.8	345.1	307.5	357.9	1.76	16.44	17.10
February	453.1	386.4	376.9	493.6	533.3	528.0	320.7	413.5	393.0	358.1	355.2	420.3	209.8	297.9	349.9	311.5	363.1	1.78	17.35	17.01
March	461.3	393.8	384.4	500.7	544.4	539.0	326.1	420.0	398.2	363.3	360.3	427.3	212.1	302.2	355.2	315.7	368.5	1.81	18.24	17.00
April	469.7	399.2	389.6	507.9	555.8	550.2	331.6	426.6	403.5	368.7	365.4	434.5	214.4	306.6	360.5	320.0	373.9	1.82	19.09	17.09



Table 4 Rural Consumer Price Index (Base November 2009 = 100)																					
	All Items	All Items less Farm Produce.	All Items less Farm Produce and Energy	Imported Food	Food	Food & Non-Alcoholic Bev.	Alcoholic Beverage, Tobacco and Kola	Clothing and Footwear	Housing, Water, Electricity, Gas and Other Fuel	Furniture & Household Equipment Maintenance.	Health.	Transport	Communication	Recreation & Culture.	Education	Restaurants & Hotels	Miscellaneous Goods & Services	Month-on (%)	Year-on (%)	12-month average (%)	
Weight	1000.00	480.09	394.61	114.03	532.25	540.89	10.61	85.68	147.16	50.72	32.25	57.19	4.01	6.65	38.93	10.14	15.78				
2021	353.4	310.8	304.6	387.4	404.9	402.8	271.0	316.9	308.3	286.3	278.1	289.8	177.6	228.3	283.4	241.1	279.0	1.46	15.92	13.04	
January	358.7	315.0	309.0	392.4	412.2	410.0	273.8	320.3	311.2	289.3	281.7	293.2	179.0	230.5	286.1	243.3	282.0	1.50	16.77	13.48	
February	364.2	317.9	311.6	397.6	419.7	417.4	276.7	323.7	314.2	292.3	285.3	296.8	180.4	232.8	288.9	245.5	285.0	1.52	17.60	13.99	
March	367.7	321.3	315.4	402.8	423.7	421.5	279.5	327.3	316.3	295.5	288.4	299.8	181.8	235.2	291.5	247.9	288.0	0.95	17.57	14.48	
April	371.3	324.7	318.8	408.1	428.0	425.7	282.2	330.9	318.5	298.7	291.5	303.0	183.3	237.6	294.1	250.3	291.0	0.98	17.36	14.94	
May	375.1	326.8	320.9	413.5	432.6	430.3	284.9	334.6	320.8	302.0	294.6	306.2	184.7	239.9	296.9	252.8	294.1	1.02	17.16	15.36	
June	378.3	331.1	325.5	419.0	436.0	433.7	287.5	338.5	323.6	305.4	297.8	309.4	186.2	242.3	299.7	255.3	297.2	0.87	16.75	15.73	
July	382.1	333.1	327.0	424.7	440.4	438.1	289.9	342.1	326.3	308.2	300.7	312.5	187.7	244.6	302.6	257.7	300.2	0.99	16.43	16.03	
August	386.3	337.1	331.0	430.4	445.6	443.2	292.7	345.7	329.2	311.4	303.7	315.8	189.1	246.9	305.6	260.2	303.1	1.10	16.08	16.26	
September	389.9	338.6	332.4	436.3	449.5	447.1	295.7	349.6	332.3	315.0	307.0	319.6	190.6	249.3	308.7	262.9	306.2	0.95	15.48	16.39	
October	394.0	343.3	337.0	442.2	454.1	451.7	298.5	353.5	335.7	318.6	310.4	323.3	192.1	251.8	311.9	265.7	309.6	1.04	14.89	16.42	
November	401.0	346.8	340.3	448.2	463.6	461.0	302.8	358.3	340.3	322.3	314.0	327.1	193.7	254.9	315.5	268.7	313.2	1.77	15.11	16.40	
December	406.7	351.5	344.9	454.3	470.6	468.0	307.1	363.3	344.6	326.1	317.8	331.1	195.3	258.2	319.2	271.9	316.9	1.42	15.06	16.31	
2022	413.2	355.8	349.2	460.6	479.1	476.5	311.5	368.4	349.1	330.0	321.7	335.2	196.9	261.5	323.0	275.2	320.6	1.61	15.18	16.18	
January	420.3	358.0	350.6	466.9	488.4	485.7	316.2	373.8	354.1	334.3	325.8	340.0	198.5	265.0	327.3	278.6	324.7	1.73	15.42	16.00	
February	427.7	362.2	354.4	473.2	497.9	495.1	321.1	379.3	359.3	338.8	330.0	344.8	200.2	268.5	331.6	282.2	328.9	1.74	16.32	15.91	
March	436.2	368.9	361.3	479.7	507.6	504.7	326.2	385.0	364.6	343.4	334.5	349.8	202.1	272.2	336.1	285.8	333.2	1.76	17.21	15.91	
April	443.0	375.3	367.7	486.4	517.8	514.8	331.6	390.9	370.0	348.2	339.2	355.3	204.1	276.1	340.9	289.5	337.9	1.81	18.13	16.02	

**Table 5 Combined Urban And Rural State Consumer Price Index (Base Period: November 2009 = 100)**

	Jun-21		May-22		Jun-22					
State	Food	All	Food	All	Food	All	MoM		YoY	
		Items		Items		Items	Food	All Items	Food	All Items
Abia	435.4	383.4	518.8	446.1	529.0	457.3	1.96	2.51	21.51	19.26
Abuja	432.8	371.0	515.3	440.0	525.8	439.9	2.02	-0.03	21.47	18.57
Adamawa	439.9	375.6	514.9	437.4	521.1	436.3	1.22	-0.26	18.47	16.14
Akwa Ibom	439.9	379.3	528.4	447.5	540.2	455.1	2.24	1.70	22.81	20.01
Anambra	444.2	394.7	516.4	457.9	525.3	466.2	1.72	1.82	18.27	18.13
Bauchi	394.7	440.0	457.9	530.7	466.2	536.7	1.82	1.13	18.13	21.99
Bayelsa	448.0	390.9	528.9	453.6	546.2	463.2	3.27	2.12	21.90	18.50
Benue	445.7	382.7	525.9	442.9	535.4	453.7	1.82	2.44	20.12	18.56
Borno	437.1	366.4	514.9	424.4	529.0	431.3	2.74	1.62	21.04	17.72
Cross River	449.9	353.4	537.6	415.7	547.1	424.0	1.76	2.00	21.59	19.99
Delta	443.2	360.3	531.3	423.2	539.3	427.9	1.51	1.10	21.68	18.74
Ebonyi	454.1	392.7	545.1	462.5	564.3	474.2	3.52	2.52	24.27	20.73
Edo	447.3	393.7	526.1	457.5	539.3	467.6	2.50	2.20	20.56	18.77
Ekiti	444.8	357.6	532.5	416.1	545.0	425.6	2.35	2.29	22.54	19.02
Enugu	452.8	364.9	532.4	425.1	545.2	430.6	2.40	1.30	20.41	18.01
Gombe	442.0	390.3	523.5	456.2	531.4	462.0	1.50	1.27	20.21	18.38
Imo	448.3	351.0	526.6	405.3	539.4	412.9	2.44	1.89	20.33	17.65
Jigawa	438.3	390.8	499.1	446.3	508.5	454.7	1.87	1.89	16.01	16.37
Kaduna	451.4	400.5	519.3	459.9	531.6	471.9	2.37	2.61	17.75	17.83
Kano	453.1	400.4	530.1	462.9	538.7	472.2	1.63	1.99	18.88	17.91
Katsina	426.7	350.7	499.7	406.0	510.2	412.3	2.12	1.57	19.57	17.57
Kebbi	442.9	407.6	526.6	478.3	540.0	488.8	2.54	2.20	21.94	19.94
Kogi	482.9	426.0	586.3	503.4	602.7	517.0	2.81	2.69	24.81	21.37
Kwara	459.8	452.4	561.8	521.4	577.6	531.9	2.81	2.00	25.62	17.56
Lagos	454.5	398.9	545.0	467.8	555.8	475.1	1.98	1.55	22.28	19.11
Nassarawa	447.0	395.0	521.4	456.9	529.5	464.4	1.57	1.63	18.47	17.56
Niger	440.3	395.6	521.2	459.7	532.6	469.9	2.18	2.22	20.96	18.76
Ogun	457.2	409.9	538.8	476.7	546.8	483.0	1.48	1.31	19.61	17.83
Ondo	447.1	394.1	529.7	460.8	547.0	473.1	3.25	2.65	22.34	20.03
Osun	445.5	384.8	517.9	441.5	531.8	449.5	2.67	1.81	19.37	16.82
Oyo	454.2	407.9	528.5	472.3	541.6	481.2	2.47	1.90	19.23	17.97
Plateau	441.4	395.9	526.1	464.5	533.9	471.3	1.49	1.45	20.96	19.03
Rivers	439.6	382.0	534.7	450.4	546.6	460.8	2.23	2.32	24.34	20.65
Sokoto	455.3	394.2	528.7	454.9	529.3	458.4	0.11	0.79	16.24	16.31
Taraba	438.2	376.9	526.2	442.7	531.2	447.2	0.94	1.00	21.22	18.64
Yobe	439.8	393.4	515.6	457.2	530.2	468.5	2.83	2.47	20.55	19.09
Zamfara	443.8	395.6	521.3	460.8	531.9	470.5	2.04	2.11	19.85	18.94

*Note: Indices may not be used for inter-state price comparison because market baskets differ from state to state*

# CONTACT



## National Bureau of Statistics

Head Office

Plot 762 Independence Avenue,  
Central Business District, Garki  
Abuja.

## Sunday J. Ichedi

Information Desk

Head, Communication & Public  
Relations Department (C&PRD)  
Phone: +2348037051701  
sjichedi@nigerianstat.gov.ng

## Moses Mathew

Statistical Information Officer

Phone: +2347069071157  
matmoses@nigerianstat.gov.ng

## Nuhu Joseph Waney II

Chief of Protocol

Phone: +2348037020063  
jwnuhu@nigerianstat.gov.ng



@nbsnigeria



NBSNigeria



Nbs\_nigeria

