



NATIONAL BUREAU OF STATISTICS

Consumer Price Index

April 2022

(BASE PERIOD NOVEMBER 2009 = 100)



Report Date: May 2022

Data Source: National Bureau of Statistics (NBS)

CONTENT

Brief Methodology	3
All Item Index	7
Food Index	12
All Items Less Farm Produce	14
State Profile	15
Appendix	18
Contact	23

BRIEF METHODOLOGY

The CPI measures the average change over time in the prices of goods and services consumed by people for day-to-day living. The construction of the CPI combines economic theory, sampling, and other statistical techniques using data from other surveys to produce a weighted measure of average price changes in the Nigerian economy. The weighting occurs to capture the importance of the selected commodities in the entire index. The production of the CPI requires the skills of economists, statisticians, computer scientists, data collectors, and others.

Key in the construction of the price index is the selection of the market basket of goods and services. Every month, 10,534 informants spread across the country provide price data for the computation of the CPI. The market items currently comprise 740 goods and services regularly priced. The first stage in the calculation of the CPI is the collection of prices on each item (740 goods and services) from outlets in each sector (rural or urban) for each state. Prices are then averaged for each item per sector across the state. The next step is to use the average price to calculate the basic index for each commodity: The current year price of each commodity is compared with a base year's price to obtain a relative price.

Next, we use the Laspeyres formula to compute an aggregated index for each class (which has a multitude of commodities that have similar consumption purposes): Here the sum of the product of weights (obtained from the expenditure survey) and relative prices for each item is divided by the sum of the weight of the items in that class, and the result multiplied by 100 gives the required index number. This index number is still classified according to the urban and rural sectors for each of the 36 states and the FCT. This yields 85 classes then 48 groups which are then reclassified into 12 Divisions to derive:

1. The Country Composite Index
2. The Urban National Index
3. The Rural National Index
4. The Combined Urban and Rural State Composite Index

The survey methodology generates 3774 all-items indices for all states and the FCT.

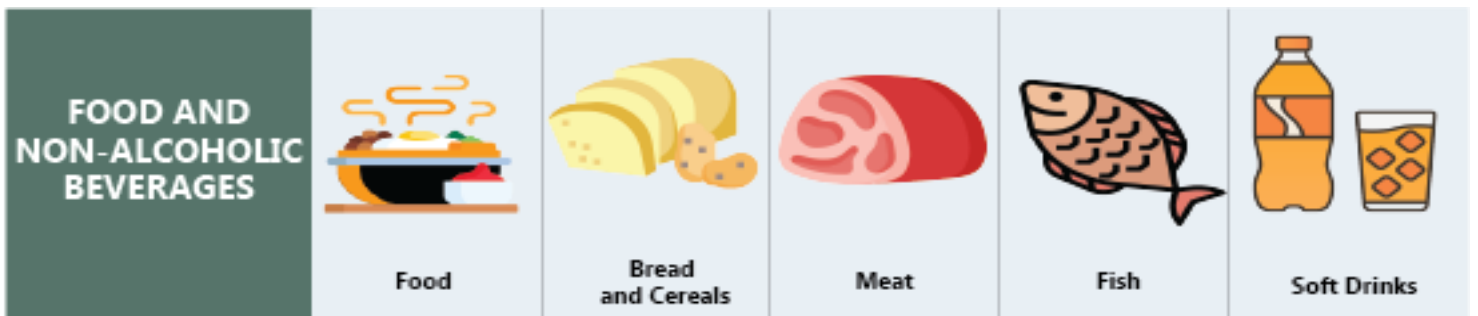
This edition of the Statistical News contains the revised Consumer Price Index (CPI) based on Nigeria Living Standard Survey (NLSS) 2003/2004. The consumption expenditure data were re-valued to November 2009, which is the base period for the revised CPI.

The May 2003 and September 1985-based indices are being continued using factors derived from the new CPI. These indices will yield the same price change for any commodity group contained in all the series.

A new sub-index Imported Food Index- is available in the revised CPI.

Note: The urban and rural indices were weighted with the ratio of their populations to the national i.e., 0.455 and 0.545 respectively to compute the composite indices at the 12 Classification of Individual Consumption by Purpose (COICOP) functions and all-items levels. This may cause a variance between a recalculated all items index using the weights and the All-Items index published because the weights were computed only from the consumption expenditure survey result.

The following breakdown highlights a non-exhaustive list of the components of the current CPI:



HOUSING, WATER, ELECTRICITY AND GAS



Actual and imputed rentals for housing



Water supply



Liquid fuel



Electricity



Gas

FURNISHINGS, HOUSEHOLD EQUIPMENT



Furniture and furnishings



Household textiles



Repair of household appliances



Carpets and other floor coverings



Non-durable household goods

HEALTH



Pharmaceutical products



Medical services



Dental services



Hospital services



Paramedical services

TRANSPORT



Motor cars



Motor cycles



Passenger transport by air



Passenger transport by road



Passenger transport by sea and inland waterways

COMMUNICATION



Postal services



Telephone and telefax equipment



Telephone and telefax services

RECREATION AND CULTURE



Photographic development



Musical instrument



Recreational and sporting services



Games of chance



Audio-visual, photographic and information processing equipment

EDUCATION



Books & stationery

RESTAURANTS AND HOTELS



Accommodation services



Catering services

MISCELLANEOUS GOODS AND SERVICES



Hairdressing salons and personal grooming establishments



Jewellery, clocks and watches



Appliances, articles and products for personal care



Insurance



Other services

ALL ITEMS INDEX

In April 2022, the consumer price index, (CPI) which measures inflation increased to 16.82 percent on a year-on-year basis. This is 1.3 percent points lower compared to the rate recorded in April 2021 (18.12) percent. This means that the headline inflation rate slowed down in April when compared to the same month in the previous year.

Increases were recorded in all COICOP divisions that yielded the Headline index.

On a month-on-month basis, the Headline index increased to 1.76 percent in April 2022, this is a 0.02 percent rate higher than the rate recorded in March 2022 (1.74) percent.

The percentage change in the average composite CPI for the twelve months period ending April 2022 over the average of the CPI for the previous twelve months period is 16.45 percent, showing a 0.1 percent decrease compare to the 16.54 percent recorded in March 2022.

The urban inflation rate increased to 17.35 percent (year-on-year) in April 2022 from 18.68 percent recorded in April 2021, while the rural inflation rate increased to 16.32 percent in April 2022 from 17.57 percent in April 2021.

On a month-on-month basis, the urban index rose to 1.78 percent in April 2022, up by 0.02 from the rate recorded in March 2022 (1.76), while the rural index also rose to 1.74 percent in April 2022, up by 0.01 from the rate that was recorded in March 2022 (1.73) percent.

The corresponding twelve-month year-on-year average percentage change for the urban index is 17.01 percent in April 2022. This is lower than 17.10 percent reported in March 2022, while the corresponding rural inflation rate in April 2022 is 15.91 percent compared to 16.00 percent recorded in March 2022.



NATIONAL BUREAU OF STATISTICS

HEADLINE CPI IN APRIL 2022 ROSE BY

16.82%

YEAR-ON-YEAR

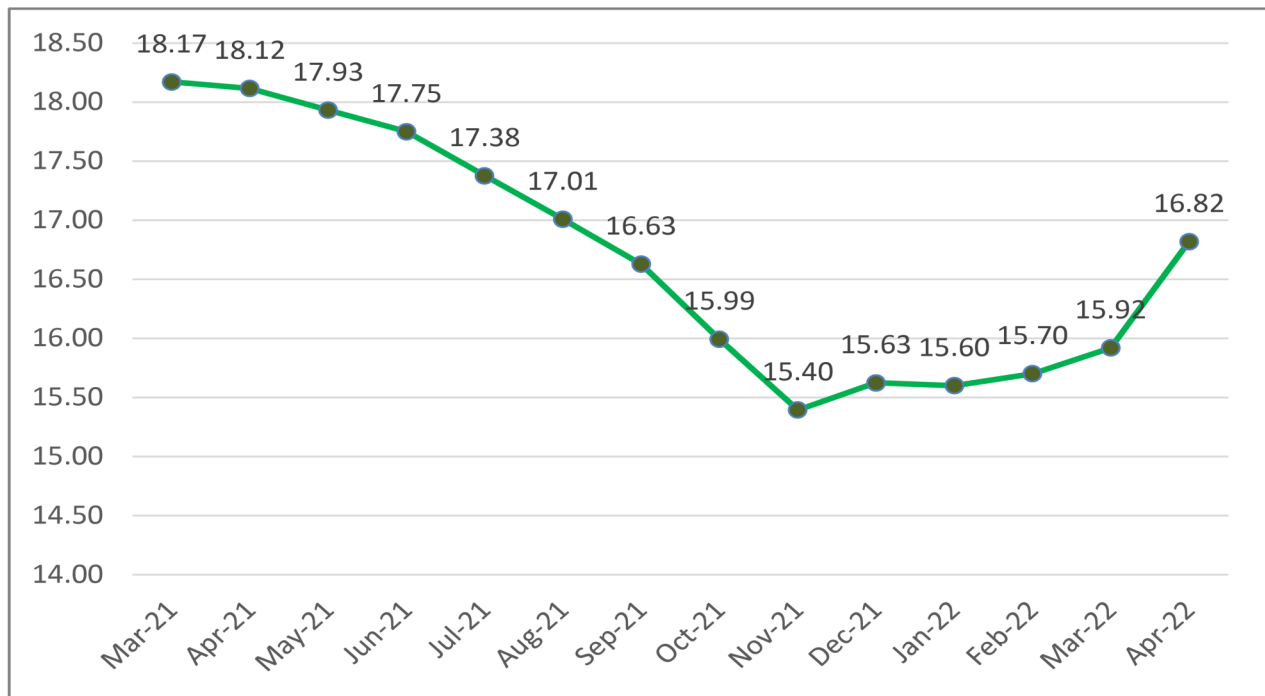
(FROM 18.12% IN APRIL 2021)

1.76%

MONTH-ON-MONTH

(FROM 1.74% IN MARCH 2022)

CPI (%) HEADLINE 12-MONTH SERIES



The CPI (Consumer Price Index) measures the average change over time in prices of goods and services consumed by people for day-to-day living i.e it measures the inflation rate



NATIONAL BUREAU OF STATISTICS

URBAN

17.35%

YEAR-ON-YEAR

(FROM 18.68% IN APRIL 2021)

1.78%

MONTH-ON-MONTH

(FROM 1.76% IN MARCH 2022)



URBAN AND RURAL INDEX IN APRIL 2022



RURAL

16.32%

YEAR-ON-YEAR

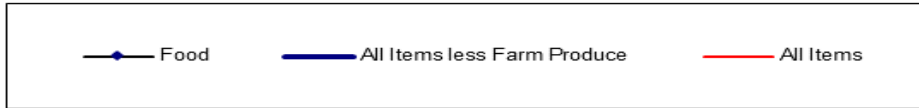
(FROM 17.57% IN APRIL 2021)

1.74%

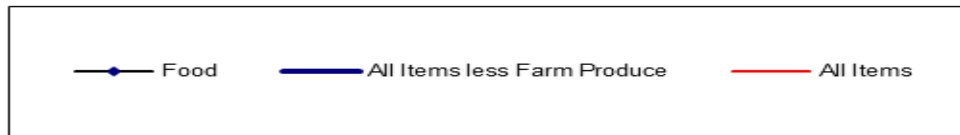
MONTH-ON-MONTH

(FROM 1.73% IN MARCH 2022)

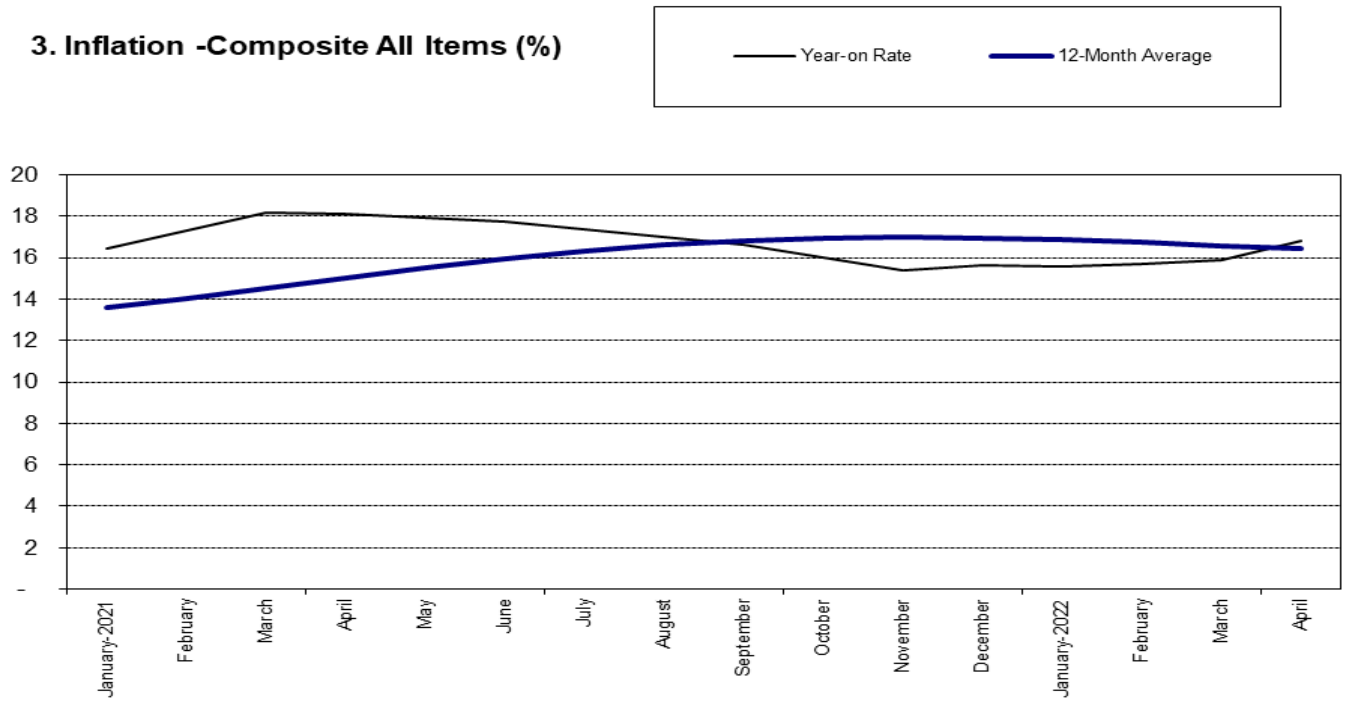
1. Inflation: Composite Year-on Change (%)



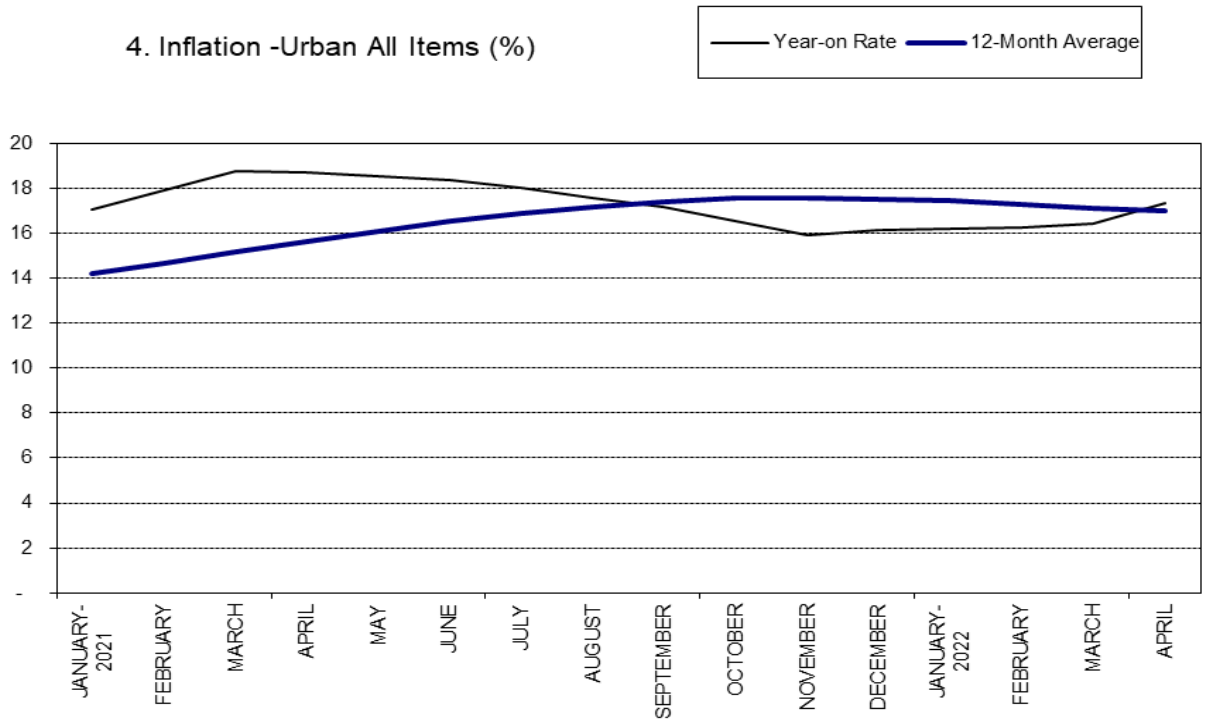
2. Inflation: Composite 12-Month Average Change (%)



3. Inflation -Composite All Items (%)



4. Inflation -Urban All Items (%)



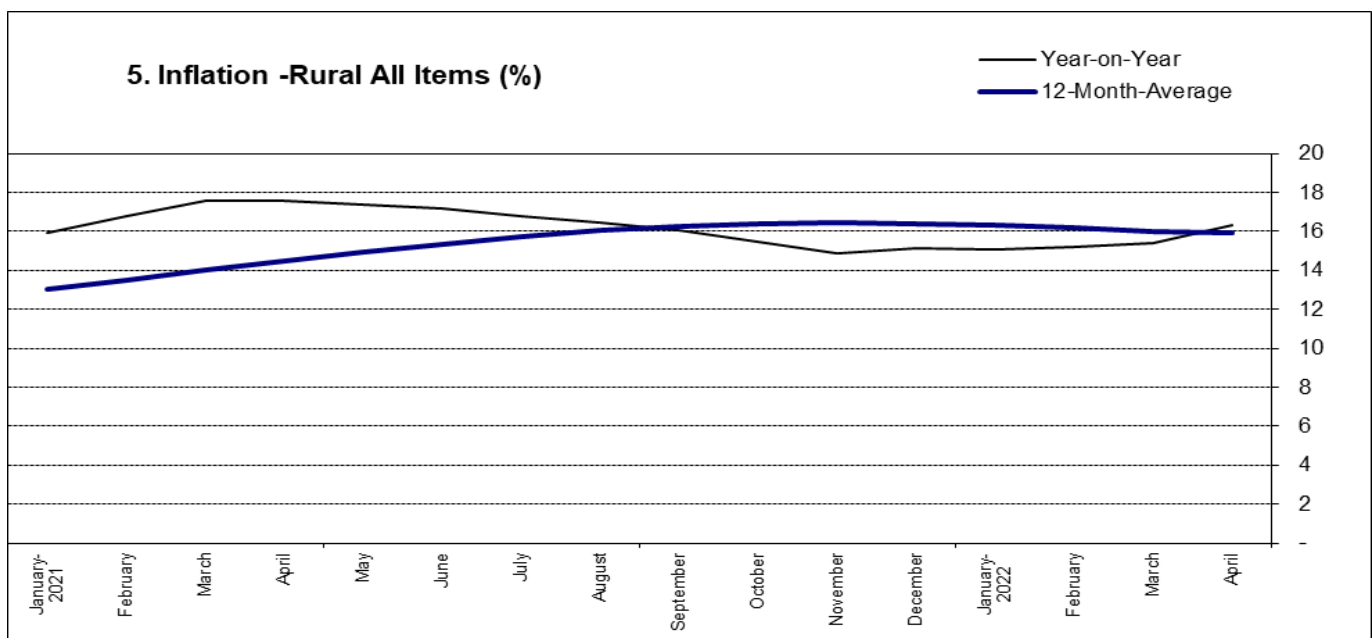
FOOD INDEX

The composite food index rose to 18.37 percent in April 2022 compared to 22.72 percent in April 2021.

This rise in the food index was caused by increases in the prices of Bread and cereals, Food products n.e.c, Potatoes, yam, and other tubers, Wine, Fish, Meat, and Oils

On a month-on-month basis, the food sub-index increased to 2.00 percent in April 2022, up by 0.01 percent points from 1.99 percent recorded in March 2022.

The average annual rate of change of the Food sub-index for the twelve-month period ending April 2022 over the previous twelve-month average is 18.88 percent, 0.34 percent points from the average annual rate of change recorded in March 2022 (19.21) percent.





NATIONAL BUREAU OF STATISTICS

FOOD SUB-INDEX IN APRIL 2022 ROSE BY

18.37%

YEAR-ON-YEAR
(FROM 22.72% IN APRIL 2021)

2.00%

MONTH-ON-MONTH
(FROM 1.99% IN MARCH 2022)

CORE SUB-INDEX IN APRIL 2022 ROSE BY

14.18%

YEAR-ON-YEAR
(FROM 12.74% IN APRIL 2021)

1.22%

MONTH-ON-MONTH
(FROM 0.98% IN MARCH 2022)

ALL ITEMS LESS FARM PRODUCE

The “All items less farm produce” or Core inflation, which excludes the prices of volatile agricultural produce stood at 14.18 percent in April 2022, up by 1.44 percent when compared with 12.74 percent recorded in April 2021.

On a month-on-month basis, the core sub-index increased to 1.22 percent in April 2022. This is down by 0.24 percent when compared with 0.98 percent recorded in March 2022.

The highest increases were recorded in prices of Gas, Liquide fuel, Cleaning, repair and hire of clothing, Clothing materials, other articles of clothing, and clothing accessories.

The average 12-month annual rate of change of the index was 13.68 percent for the twelve-month period ending April 2022; this is 0.12 percent points higher than the 13.56 percent recorded in March 2022.

STATE PROFILES

In analysing price movements under this section, note that CPI is weighted by consumption expenditure patterns which differ across states and locations. Accordingly, the weight assigned to a particular food or non-food item may differ from state to state making inter-state comparisons of consumption basket inadvisable and potentially misleading.

All Items Inflation

In April 2022, all items inflation on a year-on-year basis was highest in Bauchi (18.93%), Ebonyi (18.88%), and Akwa Ibom (18.80%), while Sokoto (14.65%), Kwara (15.33%) and Kaduna(15.69%) recorded the slowest rise in headline Year on Year inflation.

On month-on-month basis however, April 2022, recorded the highest increases in Abuja (2.91%), Taraba (2.76%) and Bauchi (2.65%), while Benue (0.29%), Kogi (0.48%) and Niger (0.66%) recorded the slowest rise on month-on-month inflation. .

Food Inflation

In April 2022, food inflation on a year-on-year basis was highest in Kogi (22.79%), Kwara (21.56%), and Ebonyi (21.45%), while Sokoto (14.85%), Kaduna (15.55%) and Anambra (16.68%) recorded the slowest rise in year-on-year food inflation.

On a month-on-month basis, however, March 2022 food inflation was highest in Ekiti (4.03%), Taraba (3.68%), and Osun (3.04%), while Anambra (0.66%), Kogi (1.01%) and Bauchi (1.08%) recorded the slowest rise on month-on-month inflation.

ALL ITEMS INFLATION

YEAR-ON-YEAR

HIGHEST RISE IN

BAUCHI	▶	18.93%
EBONYI	▶	18.88%
AKWA IBOM	▶	18.81%

SLOWEST RISE IN

SOKOTO	▶	14.66%
KWARA	▶	15.33%
KADUNA	▶	15.69%

MONTH-ON-MONTH

HIGHEST RISE IN

FCT	▶	2.92%
TARABA	▶	2.76%
BAUCHI	▶	2.65%

SLOWEST RISE IN

BENUE	▶	0.30%
KOGI	▶	0.49%
NIGER	▶	0.67%

FOOD INFLATION

YEAR-ON-YEAR

HIGHEST RISE IN

KOGI	▶	22.80%
KWARA	▶	21.56%
EBONYI	▶	21.45%

SLOWEST RISE IN

SOKOTO	▶	14.86%
KADUNA	▶	15.56%
ANAMBRA	▶	16.68%

MONTH-ON-MONTH

HIGHEST RISE IN

EKITI	▶	4.03%
TARABA	▶	3.68%
OSUN	▶	3.04%

SLOWEST RISE IN

ANAMBRA	▶	0.67%
KOGI	▶	1.02%
BAUCHI	▶	1.08%

APPENDIX

Table 1 Composite Consumer Price Index (Base November 2009 = 100)

	All Items Index	12-Month Average	Month-on change (%)	Year-on change (%)	12-Month average change (%)	All Items less Farm Produce	12-Month Average	Month-on change (%)	Year-on change (%)	12-Month average change (%)	Food	12-Month Average	Month-on change (%)	Year-on change (%)	12-Month average change (%)
Weights	1000.00					513.10					507.06				
January 2021	361.2	334.2	1.49	16.47	13.62	316.5	299.6	1.26	11.85	10.52	413.8	375.7	1.83	20.57	16.66
February	366.8	338.8	1.54	17.33	14.05	320.3	302.6	1.21	12.38	10.77	421.6	382.0	1.89	21.79	17.25
March	372.5	343.5	1.56	18.17	14.55	323.7	305.6	1.06	12.67	11.01	429.7	388.7	1.90	22.95	17.93
April	376.1	348.3	0.97	18.12	15.04	326.9	308.7	0.99	12.74	11.25	433.9	395.3	0.99	22.72	18.58
May	379.9	353.2	1.01	17.93	15.50	331.0	311.9	1.24	13.15	11.50	438.5	402.0	1.05	22.28	19.18
June	384.0	358.0	1.06	17.75	15.93	333.6	315.1	0.81	13.09	11.75	443.4	408.6	1.11	21.83	19.72
July	387.5	362.8	0.93	17.38	16.30	338.0	318.5	1.31	13.72	12.05	447.2	415.1	0.86	21.03	20.16
August	391.5	367.5	1.02	17.01	16.60	340.6	321.9	0.77	13.41	12.29	451.9	421.5	1.06	20.30	20.50
September	396.0	372.2	1.15	16.63	16.83	344.8	325.3	1.24	13.74	12.55	457.6	427.7	1.26	19.57	20.71
October	399.9	376.8	0.98	15.99	16.96	347.6	328.7	0.80	13.24	12.73	461.8	433.7	0.91	18.34	20.75
November	404.2	381.3	1.08	15.40	16.98	352.0	332.3	1.26	13.85	12.96	466.7	439.4	1.07	17.21	20.62
December	411.5	385.9	1.82	15.63	16.95	355.9	335.9	1.12	13.87	13.16	477.0	445.3	2.19	17.37	20.40
January 2022	417.6	390.6	1.47	15.60	16.87	360.4	339.6	1.25	13.87	13.33	484.7	451.2	1.62	17.13	20.09
February	424.4	395.4	1.63	15.70	16.73	365.2	343.3	1.33	14.01	13.46	493.8	457.2	1.87	17.11	19.69
March	431.8	400.4	1.74	15.92	16.54	368.8	347.1	0.98	13.91	13.56	503.6	463.3	1.99	17.20	19.21
April	439.4	405.6	1.76	16.82	16.45	373.3	350.9	1.22	14.18	13.68	513.6	470.0	2.00	18.37	18.88

Table 2 Composite Consumer Price Index (Base November 2009 = 100)																				
	All Items less Farm produce and Energy	All Items less Farm produce	All Items less Farm produce and Energy	Imported Food	Food & Non-Alcoholic Bever.	Alcoholic Beverages and Tobacco and Kola	Clothing and Footwear	Housing, Water, Electricity, Gas and Other Fuel	Furniture & Household Equipment Maintenance.	Health.	Transport	Communication	Recreation & Culture.	Education	Restaurants & Hotels	Miscellaneous Goods & Services	Month-on (%)	Year-on (%)	12-month average (%)	
Weights	1000.0	513.10	405.55	132.88	507.06	518.00	10.87	76.50	167.34	50.30	30.04	65.08	6.80	6.87	39.44	12.12	16.63			
2021 January	361.2	316.5	309.0	394.2	413.8	411.0	268.0	328.1	323.9	291.0	285.9	319.4	181.1	238.2	288.7	250.9	289.4	1.5	16.47	13.6
February	366.8	320.3	312.8	399.4	421.6	418.7	271.0	331.9	326.8	294.2	289.7	323.5	182.6	240.6	291.6	253.3	292.6	1.5	17.33	14.1
March	372.5	323.7	316.1	404.8	429.7	426.7	274.1	335.7	329.8	297.5	293.6	327.6	184.1	243.1	294.5	255.8	295.9	1.6	18.17	14.6
April	376.1	326.9	319.5	410.1	433.9	430.9	277.0	339.6	332.1	300.9	296.9	331.2	185.7	245.7	297.2	258.3	299.1	1.0	18.12	15.0
May	379.9	331.0	323.7	415.5	438.5	435.4	279.7	343.5	334.4	304.3	300.2	334.8	187.2	248.3	299.9	260.9	302.4	1.0	17.93	15.5
June	384.0	333.6	326.4	421.1	443.4	440.3	282.6	347.6	336.9	307.8	303.6	338.5	188.8	251.0	302.9	263.6	305.7	1.1	17.75	15.9
July	387.5	338.0	331.1	426.7	447.2	444.1	285.3	351.8	339.7	311.3	307.0	342.3	190.4	253.6	306.0	266.3	309.0	0.9	17.38	16.3
August	391.5	340.6	333.4	432.5	451.9	448.8	287.8	355.7	342.5	314.5	310.1	346.0	192.0	256.2	309.1	269.0	312.2	1.0	17.01	16.6
September	396.0	344.8	337.8	438.4	457.6	454.4	290.7	359.7	345.4	317.9	313.3	349.8	193.6	258.7	312.3	271.8	315.5	1.1	16.63	16.8
October	399.9	347.6	340.5	444.3	461.8	458.5	293.8	364.0	348.7	321.8	316.9	354.2	195.2	261.3	315.7	274.7	318.9	1.0	15.99	17.0
November	404.2	352.0	344.7	450.4	466.7	463.4	296.9	368.2	352.1	325.6	320.4	358.5	196.8	264.2	319.1	277.9	322.8	1.1	15.40	17.0
December	411.5	355.9	348.4	456.5	477.0	473.5	301.3	373.3	356.7	329.6	324.3	363.0	198.5	267.6	322.9	281.1	326.8	1.8	15.63	17.0
2022 January	417.6	360.4	352.7	462.8	484.7	481.2	305.7	378.6	361.0	333.6	328.3	367.6	200.2	271.1	326.8	284.5	330.9	1.5	15.60	16.9
February	424.4	365.2	357.5	469.3	493.8	490.2	310.3	384.0	365.4	337.8	332.4	372.4	202.0	274.7	330.9	288.0	335.2	1.6	15.70	16.7
March	431.8	368.8	360.5	475.8	503.6	499.9	315.1	389.7	370.4	342.3	336.8	377.9	203.8	278.3	335.4	291.7	339.7	1.7	15.92	16.5
April	439.4	373.3	364.6	482.5	513.6	509.8	320.2	395.6	375.5	347.0	341.3	383.7	205.8	282.1	339.9	295.5	344.4	1.8	16.82	16.4

Table 3 Urban Consumer Price Index (Base November 2009 = 100)

	All Items	All Items less Farm Produce.	All Items less Farm Produce and Energy	Imported Food	Food	Food & Non-Alcoholic Bever.	Alcoholic Beverage Tobacco and Kola	Clothing and Footwear	Housing, Water, Electricity, Gas and Other Fuel	Furniture, Household Equipment and Maintenance.	Health.	Transport	Communication	Recreation & Culture.	Education	Restaurants & Hotels	Miscellaneous Goods & Services	Month-on (%)	Year-on (%)	12-month average (%)
Weight	1000.0	552.64	418.67	155.45	476.88	490.59	11.19	65.50	191.51	49.81	27.40	74.54	10.14	7.14	40.05	14.49	17.65			
January	370.4	323.3	314.2	402.4	425.1	421.3	265.9	340.2	340.2	297.6	295.5	346.3	183.0	249.6	295.0	262.8	301.9	1.52	17.03	14.23
February	376.3	326.6	317.4	407.8	433.5	429.6	269.1	344.6	343.2	301.1	299.7	351.0	184.6	252.3	298.1	265.5	305.4	1.58	17.92	14.66
March	382.3	330.7	321.4	413.3	442.2	438.2	272.5	348.9	346.2	304.8	303.9	355.7	186.3	255.1	301.2	268.1	309.0	1.60	18.76	15.15
April	386.1	333.6	324.4	418.8	446.7	442.6	275.4	353.0	348.7	308.4	307.5	359.8	188.0	257.9	304.0	270.8	312.5	0.99	18.68	15.63
May	390.1	338.4	329.6	424.4	451.6	447.5	278.2	357.3	351.2	311.9	311.1	363.8	189.6	260.7	306.9	273.7	316.0	1.04	18.51	16.09
June	394.4	341.8	333.0	430.1	456.9	452.7	281.1	361.9	353.8	315.7	314.7	368.0	191.4	263.7	310.2	276.7	319.6	1.09	18.35	16.51
July	398.2	346.3	337.8	435.9	461.2	456.9	284.0	366.4	356.7	319.4	318.5	372.3	193.1	266.7	313.5	279.6	323.3	0.98	18.01	16.89
August	402.5	349.7	341.1	441.8	466.3	462.0	286.7	370.8	359.7	323.1	321.8	376.6	194.8	269.6	316.9	282.6	326.8	1.06	17.59	17.19
September	407.3	354.2	345.9	447.9	472.6	468.2	289.7	375.1	362.7	326.8	325.2	381.2	196.5	272.4	320.4	285.7	330.5	1.21	17.19	17.41
October	411.5	358.4	350.3	454.0	477.0	472.6	293.0	379.9	366.0	331.0	329.1	386.3	198.3	275.3	324.1	289.0	334.3	1.02	16.52	17.53
November	416.1	362.4	354.0	460.2	482.4	477.9	296.3	384.4	369.5	335.1	332.9	391.2	200.0	278.6	327.8	292.6	338.8	1.12	15.92	17.55
December	423.8	366.8	358.1	466.5	493.7	489.0	300.9	389.9	374.1	339.3	337.0	396.4	201.8	282.3	331.8	296.1	343.2	1.87	16.17	17.52
January 2022	430.3	371.1	362.1	473.0	502.3	497.5	305.6	395.4	378.4	343.7	341.2	401.6	203.7	286.1	336.0	299.8	347.9	1.53	16.17	17.44
February	437.4	376.4	367.4	479.7	512.0	507.1	310.4	401.1	382.9	348.2	345.6	407.2	205.6	289.9	340.3	303.5	352.8	1.65	16.25	17.29
March	445.1	381.6	372.3	486.5	522.5	517.4	315.4	407.2	387.9	353.0	350.3	413.6	207.7	293.8	345.1	307.5	357.9	1.76	16.44	17.10
April	453.1	386.4	376.9	493.6	533.3	528.0	320.7	413.5	393.0	358.1	355.2	420.3	209.8	297.9	349.9	311.5	363.1	1.78	17.35	17.01

Table 4 Rural Consumer Price Index (Base November 2009 = 100)																						
		All Items	All Items less Farm produce.	All Items less Farm produce and Energy	Imported Food	Food	Food & Non-Alcoholic Bev.	Alcoholic Beverage, Tobacco and Kola	Clothing and Footwear	Housing, Water, Electricity, Gas and Other Fuel	Furniture & Household Equipment Maintenance.	Health.	Transportation	Communication	Recreation & Culture.	Education	Restaurants & Hotels	Miscellaneous Goods & Services	Month-on-month (%)	Year-on-year (%)	12-month average (%)	
Weight		1000.00	480.09	394.61	114.03	532.25	540.89	10.61	85.68	147.16	50.72	32.25	57.19	4.01	6.65	38.93	10.14	15.78				
2021	January	353.4	310.8	304.6	387.4	404.9	402.8	271.0	316.9	308.3	286.3	278.1	289.8	177.6	228.3	283.4	241.1	279.0	1.46	15.92	13.04	
	February	358.7	315.0	309.0	392.4	412.2	410.0	273.8	320.3	311.2	289.3	281.7	293.2	179.0	230.5	286.1	243.3	282.0	1.50	16.77	13.48	
	March	364.2	317.9	311.6	397.6	419.7	417.4	276.7	323.7	314.2	292.3	285.3	296.8	180.4	232.8	288.9	245.5	285.0	1.52	17.60	13.99	
	April	367.7	321.3	315.4	402.8	423.7	421.5	279.5	327.3	316.3	295.5	288.4	299.8	181.8	235.2	291.5	247.9	288.0	0.95	17.57	14.48	
	May	371.3	324.7	318.8	408.1	428.0	425.7	282.2	330.9	318.5	298.7	291.5	303.0	183.3	237.6	294.1	250.3	291.0	0.98	17.36	14.94	
	June	375.1	326.8	320.9	413.5	432.6	430.3	284.9	334.6	320.8	302.0	294.6	306.2	184.7	239.9	296.9	252.8	294.1	1.02	17.16	15.36	
	July	378.3	331.1	325.5	419.0	436.0	433.7	287.5	338.5	323.6	305.4	297.8	309.4	186.2	242.3	299.7	255.3	297.2	0.87	16.75	15.73	
	August	382.1	333.1	327.0	424.7	440.4	438.1	289.9	342.1	326.3	308.2	300.7	312.5	187.7	244.6	302.6	257.7	300.2	0.99	16.43	16.03	
	September	386.3	337.1	331.0	430.4	445.6	443.2	292.7	345.7	329.2	311.4	303.7	315.8	189.1	246.9	305.6	260.2	303.1	1.10	16.08	16.26	
	October	389.9	338.6	332.4	436.3	449.5	447.1	295.7	349.6	332.3	315.0	307.0	319.6	190.6	249.3	308.7	262.9	306.2	0.95	15.48	16.39	
	November	394.0	343.3	337.0	442.2	454.1	451.7	298.5	353.5	335.7	318.6	310.4	323.3	192.1	251.8	311.9	265.7	309.6	1.04	14.89	16.42	
	December	401.0	346.8	340.3	448.2	463.6	461.0	302.8	358.3	340.3	322.3	314.0	327.1	193.7	254.9	315.5	268.7	313.2	1.77	15.11	16.40	
	January 2022	406.7	351.5	344.9	454.3	470.6	468.0	307.1	363.3	344.6	326.1	317.8	331.1	195.3	258.2	319.2	271.9	316.9	1.42	15.06	16.31	
	February	413.2	355.8	349.2	460.6	479.1	476.5	311.5	368.4	349.1	330.0	321.7	335.2	196.9	261.5	323.0	275.2	320.6	1.61	15.18	16.18	
	March	420.3	358.0	350.6	466.9	488.4	485.7	316.2	373.8	354.1	334.3	325.8	340.0	198.5	265.0	327.3	278.6	324.7	1.73	15.42	16.00	
	April	427.7	362.2	354.4	473.2	497.9	495.1	321.1	379.3	359.3	338.8	330.0	344.8	200.2	268.5	331.6	282.2	328.9	1.74	16.32	15.91	

Table 5 Combined Urban And Rural State Consumer Price Index (Base Period: November 2009 = 100)

	Apr-21		Mar-22		Apr-22					
State	Food	All	Food	All	Food	All	MoM		YoY	
		Items		Items		Items	Food	All Items	Food	All Items
Abia	422.4	374.5	493.6	432.1	502.2	436.9	1.76	1.12	18.90	16.66
Abuja	422.4	364.9	498.0	417.5	509.5	429.6	2.32	2.92	20.62	17.75
Adamawa	428.8	365.7	495.3	418.7	502.4	426.5	1.44	1.85	17.17	16.61
Akwa Ibom	425.9	369.0	502.2	429.2	515.8	438.4	2.70	2.13	21.10	18.81
Anambra	432.9	383.5	501.7	443.3	505.1	448.1	0.67	1.08	16.68	16.84
Bauchi	383.5	432.5	443.3	501.1	448.1	514.4	1.08	2.65	16.84	18.93
Bayelsa	436.0	379.8	508.1	433.6	515.1	441.5	1.37	1.83	18.14	16.24
Benue	435.8	375.5	511.4	436.9	517.1	438.2	1.11	0.30	18.64	16.68
Borno	427.6	359.4	500.4	412.7	508.8	418.2	1.68	1.35	18.99	16.38
Cross River	438.4	349.0	516.1	405.2	529.3	410.1	2.54	1.19	20.73	17.49
Delta	437.6	355.1	509.8	408.7	516.3	416.0	1.28	1.78	17.98	17.12
Ebonyi	444.8	384.6	527.8	448.1	540.2	457.2	2.35	2.04	21.45	18.88
Edo	438.9	387.1	510.4	443.8	519.7	451.1	1.81	1.66	18.41	16.56
Ekiti	442.2	352.1	506.4	400.2	526.8	410.4	4.03	2.54	19.14	16.57
Enugu	437.6	356.4	516.8	412.3	525.9	417.5	1.74	1.25	20.18	17.15
Gombe	427.9	379.4	507.1	443.5	516.9	450.0	1.92	1.45	20.78	18.60
Imo	436.8	342.9	505.8	393.0	513.4	397.8	1.51	1.23	17.53	16.04
Jigawa	423.6	379.9	484.3	433.6	495.1	442.1	2.23	1.95	16.89	16.37
Kaduna	440.7	391.9	497.7	444.1	509.2	453.4	2.31	2.08	15.56	15.69
Kano	441.9	390.4	504.2	445.2	518.9	455.4	2.93	2.27	17.43	16.63
Katsina	417.6	342.9	479.9	393.0	489.2	398.6	1.94	1.43	17.15	16.24
Kebbi	436.4	400.0	506.5	461.9	520.6	472.5	2.79	2.29	19.29	18.12
Kogi	463.0	413.7	562.8	487.8	568.6	490.1	1.02	0.49	22.80	18.49
Kwara	450.3	444.2	535.0	503.2	547.4	512.4	2.32	1.82	21.56	15.33
Lagos	445.6	390.6	521.3	447.7	531.7	458.4	1.99	2.37	19.31	17.34
Nassarawa	437.2	386.6	502.6	442.2	515.4	451.4	2.55	2.09	17.89	16.78
Niger	431.7	388.0	505.3	450.8	513.0	453.8	1.52	0.67	18.84	16.95
Ogun	439.1	397.1	512.5	457.5	522.0	465.4	1.85	1.74	18.87	17.22
Ondo	441.0	388.4	512.1	444.4	522.6	455.4	2.05	2.48	18.50	17.25
Osun	432.5	374.3	498.8	426.0	514.0	435.5	3.04	2.24	18.85	16.34
Oyo	444.4	399.3	505.3	452.6	518.5	463.7	2.63	2.46	16.69	16.14
Plateau	438.7	391.3	506.4	448.0	516.3	456.0	1.94	1.79	17.67	16.52
Rivers	438.3	376.8	507.4	433.9	515.9	439.6	1.68	1.32	17.71	16.67
Sokoto	455.8	391.3	510.5	441.3	523.5	448.6	2.54	1.65	14.86	14.66
Taraba	428.2	369.3	501.4	424.4	519.9	436.1	3.68	2.76	21.42	18.09
Yobe	428.5	384.7	500.5	445.3	515.5	456.2	3.01	2.43	20.29	18.57
Zamfara	432.4	386.7	504.3	446.8	514.5	454.6	2.02	1.76	18.99	17.57

Note: Indices may not be used for inter-state price comparison because market baskets differ from state to state

CONTACT



National Bureau of Statistics

Head Office

Plot 762 Independence Avenue,
Central Business District, Garki
Abuja.

Sunday J. Ichedi

Information Desk

Head, Communication & Public
Relations Department (C&PRD)
Phone: +2348037051701
sjichedi@nigerianstat.gov.ng

Moses Mathew

Statistical Information Officer

Phone: +2347069071157
matmoses@nigerianstat.gov.ng

Nuhu Joseph Waney II

Chief of Protocol

Phone: +2348037020063
jwnuhu@nigerianstat.gov.ng



@nbs_nigeria



NBSNigeria



Nbs_nigeria

