



NATIONAL BUREAU OF STATISTICS

# Consumer Price Index

## December 2021

---

(BASE PERIOD NOVEMBER 2009 = 100)



**Report Date: January 2022**

**Data Source: National Bureau of Statistics (NBS)**

# CONTENT

Brief Methodology	3
All Item Index	7
Food Index	12
All Items Less Farm Produce	14
State Profile	15
Appendix	18
Contact	23

## BRIEF METHODOLOGY

The CPI measures the average change over time in prices of goods and services consumed by people for day-to-day living. The construction of the CPI combines economic theory, sampling and other statistical techniques using data from other surveys to produce a weighted measure of average price changes in the Nigerian economy. The weighting occurs to capture the importance of the selected commodities in the entire index. The production of the CPI requires skills of economists, statisticians, computer scientists, data collectors and others.

Key in the construction of the price index is the selection of the market basket of goods and services. Every month, 10,534 informants spread across the country provide price data for the computation of the CPI. The market items currently comprise of 740 goods and services regularly priced. The first stage in the calculation of the CPI is the collection of prices on each item (740 goods and services) from outlets in each sector (rural or urban) for each state. Prices are then averaged for each item per sector across the state. The next step is to use the average price to calculate the basic index for each commodity: The current year price of each commodity is compared with a base year's price to obtain a relative price.

Next, we use the Laspeyres formula to compute an aggregated index for each class (which has a multitude of commodities which have similar consumption purposes): Here the sum of the product of weights (obtained from the expenditure survey) and relative prices for each item is divided by the sum of the weight of the items in that class, and the result multiplied by 100 gives the required index number. This index number is still classified according to the urban or rural classification sector for each of the 36 states and the FCT. This yields 85 classes then 48 groups which are then reclassified into 12 Divisions to derive:

1. The Country Composite Index
2. The Urban National Index
3. The Rural National Index
4. The Combined Urban and Rural State Composite Index

The survey methodology generates 3774 all items indices for all states and the FCT.





This edition of the Statistical News contains the revised Consumer Price Index (CPI) based on Nigeria Living Standard Survey (NLSS) 2003/2004. The consumption expenditure data were re-valued to November 2009, which is the base period for the revised CPI.

The May 2003 and September 1985 based indices are being continued using factors derived from the new CPI. These indices will yield the same price change for any commodity group contained in all the series.

A new sub index – Imported Food Index- is available in the revised CPI.

Note: The urban and rural indices were weighted with the ratio of their populations to the national i.e., 0.455 and 0.545 respectively to compute the composite indices at the 12 Classification of Individual Consumption by Purpose (COICOP) functions and all items levels. This may cause variance between a recalculated all items index using the weights and All Items index published, because the weights were computed only from consumption expenditure survey result. The following breakdown highlights a non-exhaustive list of the components of the current CPI:

**The following breakdown highlights a non-exhaustive list of the components of the current CPI:**

<b>FOOD AND NON-ALCOHOLIC BEVERAGES</b>					
	Food	Bread and Cereals	Meat	Fish	Soft Drinks

<b>ALCOHOLIC BEVERAGES, TOBACCO AND KOLA</b>				
	Spirits	Wine	Tobacco	Narcotics

<b>CLOTHING AND FOOTWEAR</b>					
	Garments	Shoes and other Footwears	Repair and hire of Footwear	Clothing Materials, other articles of Clothing	Cleaning, Repair and Hire of Clothing

## HOUSING, WATER, ELECTRICITY AND GAS



Actual and imputed rentals for housing



Water supply



Liquid fuel



Electricity



Gas

## FURNISHINGS, HOUSEHOLD EQUIPMENT



Furniture and furnishings



Household textiles



Repair of household appliances



Carpets and other floor coverings



Non-durable household goods

## HEALTH



Pharmaceutical products



Medical services



Dental services



Hospital services



Paramedical services

## TRANSPORT



Motor cars



Motor cycles



Passenger transport by air



Passenger transport by road



Passenger transport by sea and inland waterways

## COMMUNICATION



Postal services



Telephone and telefax equipment



Telephone and telefax services

## RECREATION AND CULTURE



Photographic development



Musical instrument



Recreational and sporting services



Games of chance



Audio-visual, photographic and information processing equipment

## EDUCATION



Books & stationery

## RESTAURANTS AND HOTELS



Accommodation services



Catering services

## MISCELLANEOUS GOODS AND SERVICES



Hairdressing salons and personal grooming establishments



Jewellery, clocks and watches



Appliances, articles and products for personal care



Insurance



Other services



## ALL ITEMS INDEX

The consumer price index, (CPI) which measures inflation increased by 15.63 percent (year-on-year) in December 2021. This is 0.13 percent points lower than the rate recorded in December 2020 (15.75) percent. This is showing slowing down in the rate when compared to the corresponding period of 2020 .

Increases were recorded in all COICOP divisions that yielded the Headline index. On month-on-month basis, the Headline index increased by 1.82 percent in December 2021, this is 0.74 percent rate higher than the rate recorded in November 2021 (1.08) percent.

The percentage change in the average composite CPI for the twelve-month period ending December 2021 increased by 16.95 percent from 16.98 percent over the average of the CPI for the previous twelve-month period recorded in November 2021 down by 0.03 percent points.

Urban inflation rate increased by 16.17 percent (year-on-year) in December 2021 from 16.33 percent recorded in December 2020, while the rural inflation rate increased by 15.11 percent in December 2021 from 15.20 percent in December 2020.

On a month-on-month basis, the urban index rose by 1.87 percent in December 2021, up by 0.75 the rate recorded in November 2021 (1.12) percent, while the rural index also rose by 1.77 percent in December 2021, up by 0.73 the rate that was recorded in November 2021 (1.04) percent.

The twelve-month year-on-year average percentage change for the urban index is 17.52 percent in December 2021. This is lower than the rate reported in November 17.55 (percent), while the corresponding twelve-month (month-on-month) average percentage change for rural index inflation rate in December 2021 stood at 16.40 percent from 16.42 percent in November 2021.



NATIONAL BUREAU OF STATISTICS

# HEADLINE CPI IN DECEMBER 2021 ROSE BY

**15.63%**

**YEAR-ON-YEAR**

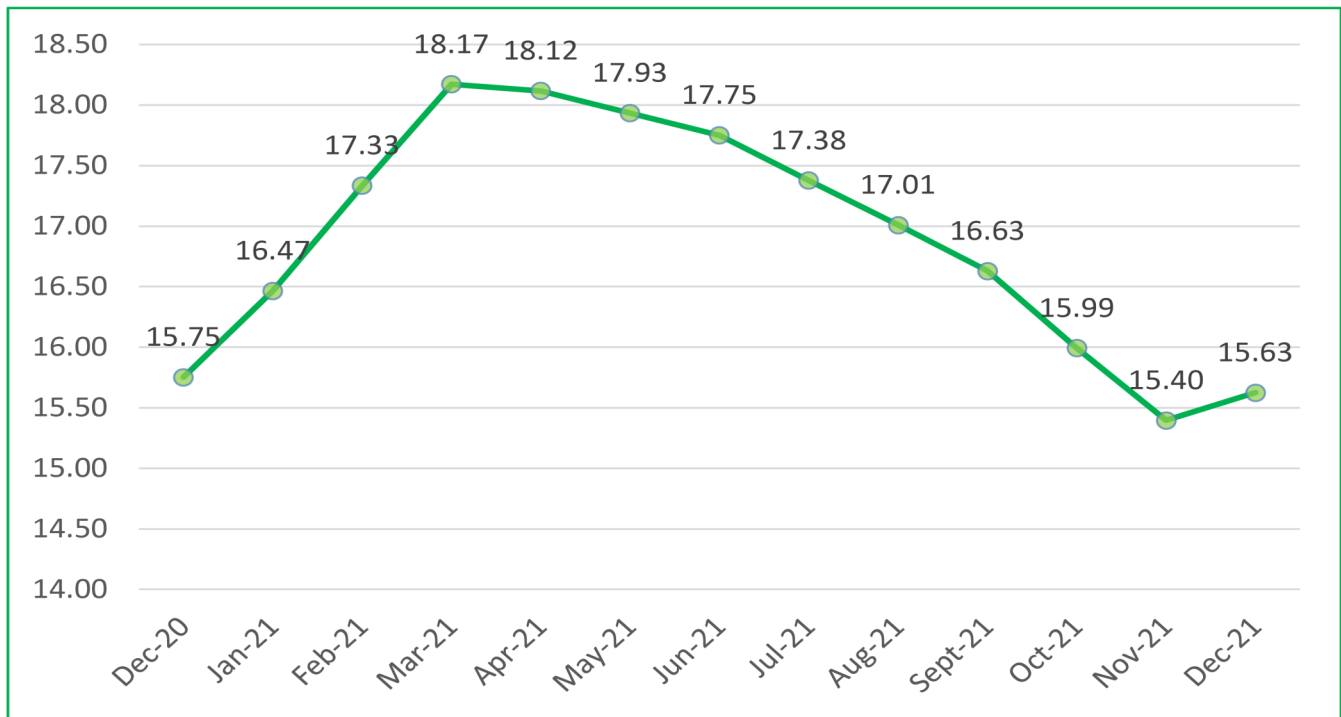
**(FROM 15.75% IN DECEMBER 2020)**

**1.82%**

**MONTH-ON-MONTH**

**(FROM 1.08% IN NOVEMBER 2021)**

## CPI (%) HEADLINE 12-MONTH SERIES



**The CPI (Consumer Price Index) measures the average change over time in prices of goods and services consumed by people for day-to-day living i.e it measures the inflation rate**





NATIONAL BUREAU OF STATISTICS

## URBAN

**16.17%**

YEAR-ON-YEAR

(FROM 16.33% IN DECEMBER 2020)

**1.87%**

MONTH-ON-MONTH

(FROM 1.12% IN NOVEMBER 2021)



## URBAN AND RURAL INDEX IN DECEMBER 2021



## RURAL

**15.11%**

YEAR-ON-YEAR

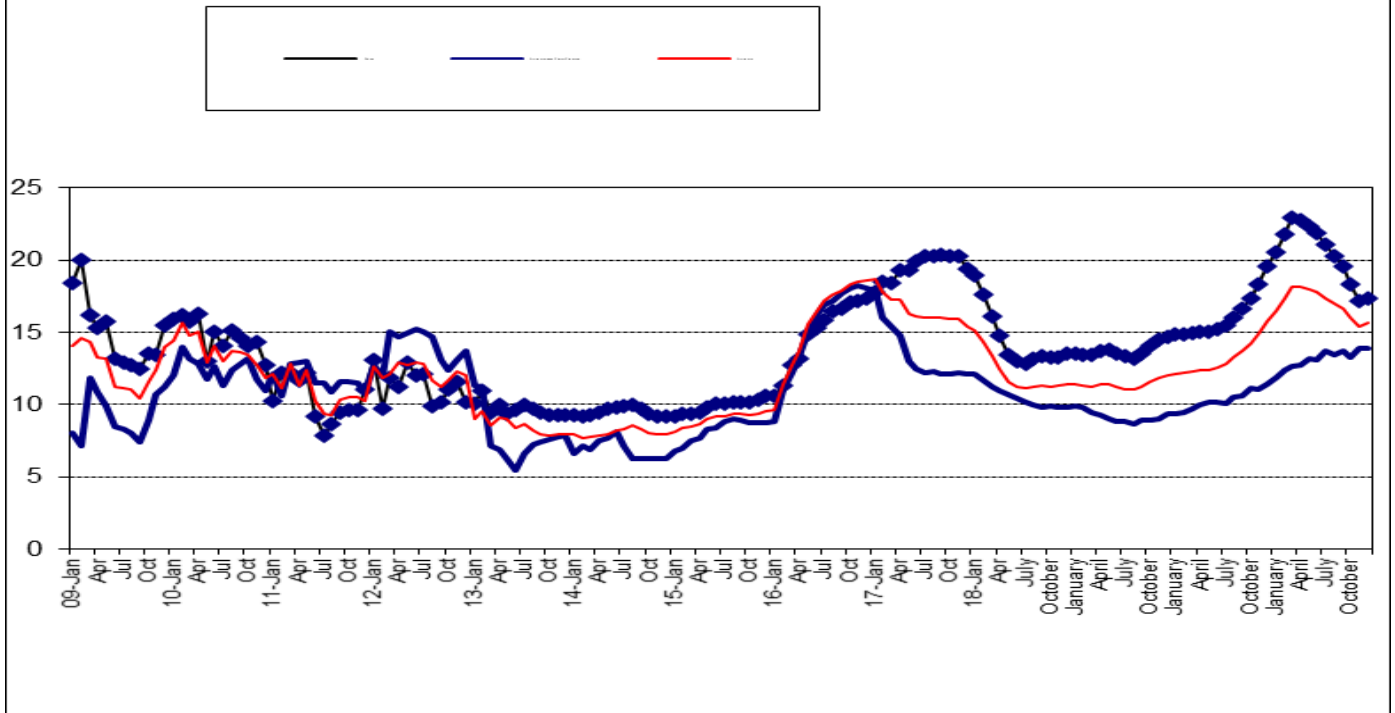
(FROM 15.20% IN DECEMBER 2020)

**1.77%**

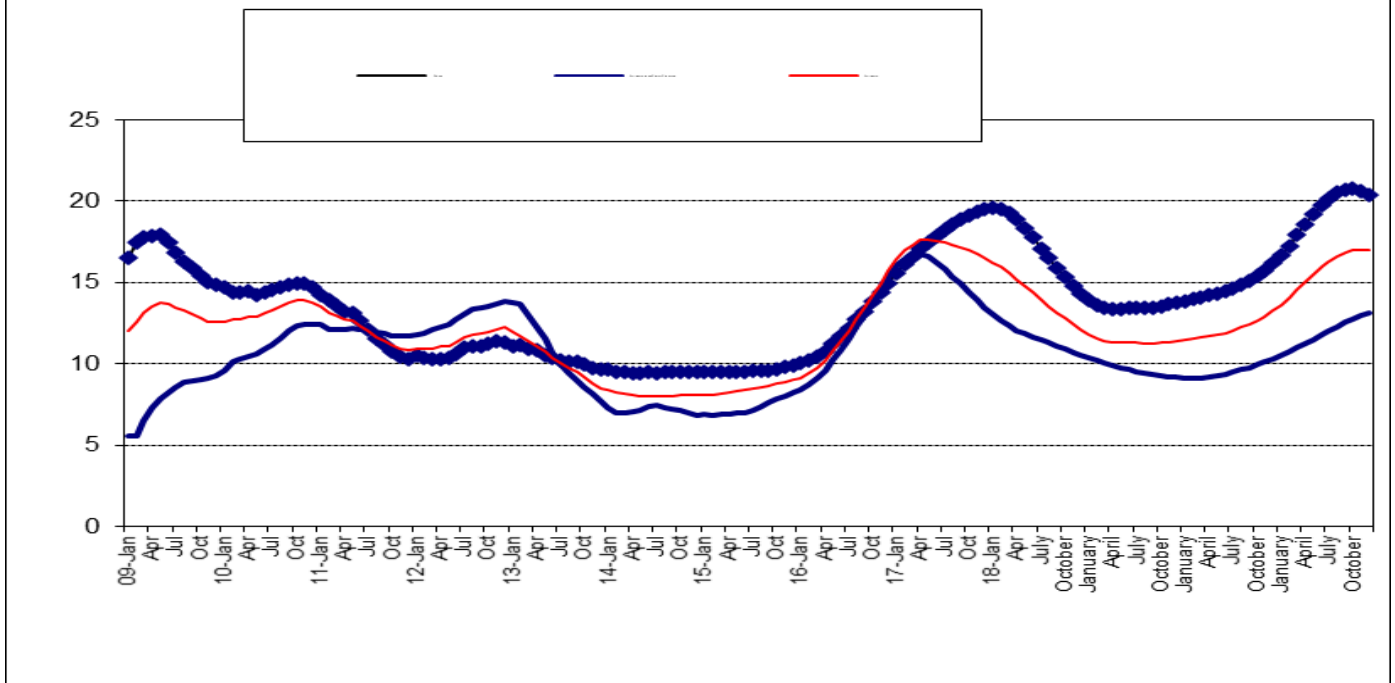
MONTH-ON-MONTH

(FROM 1.04% IN NOVEMBER 2021)

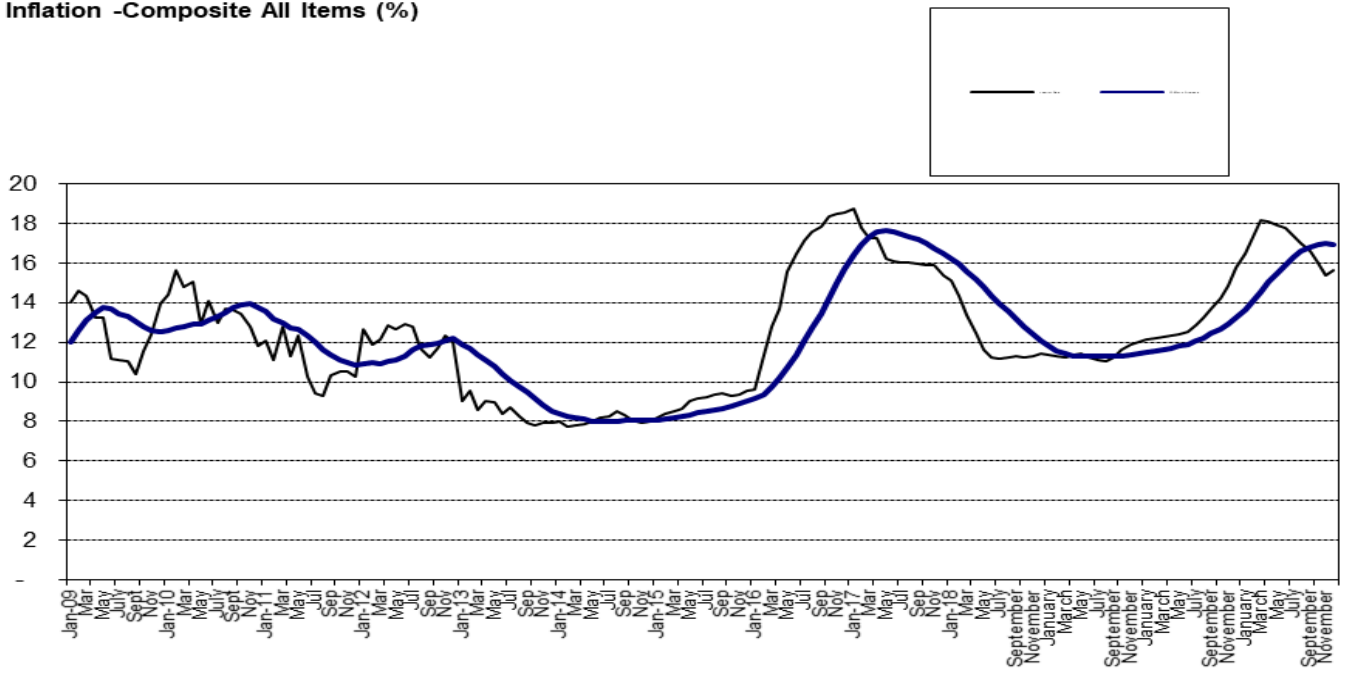
### 1. Inflation: Composite Year-on Change (%)



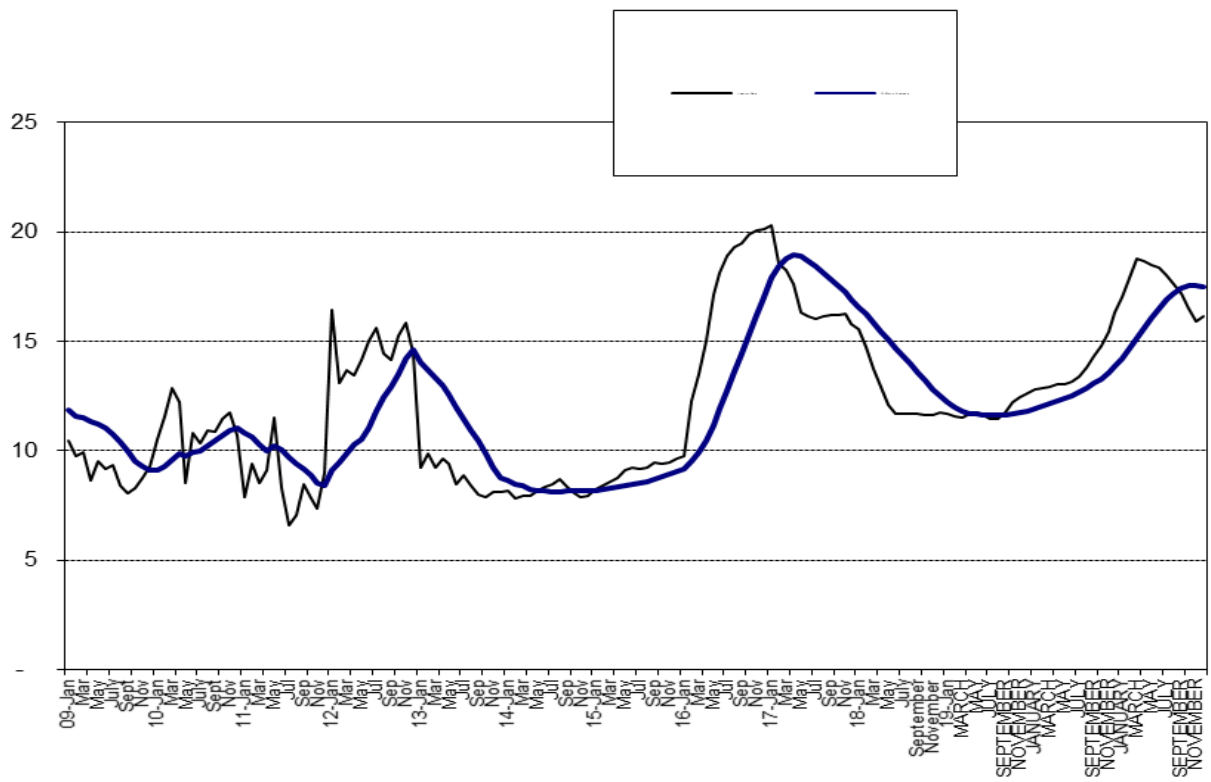
### 2. Inflation: Composite 12-Month Average Change (%)



**3. Inflation -Composite All Items (%)**



**4. Inflation -Urban All Items (%)**



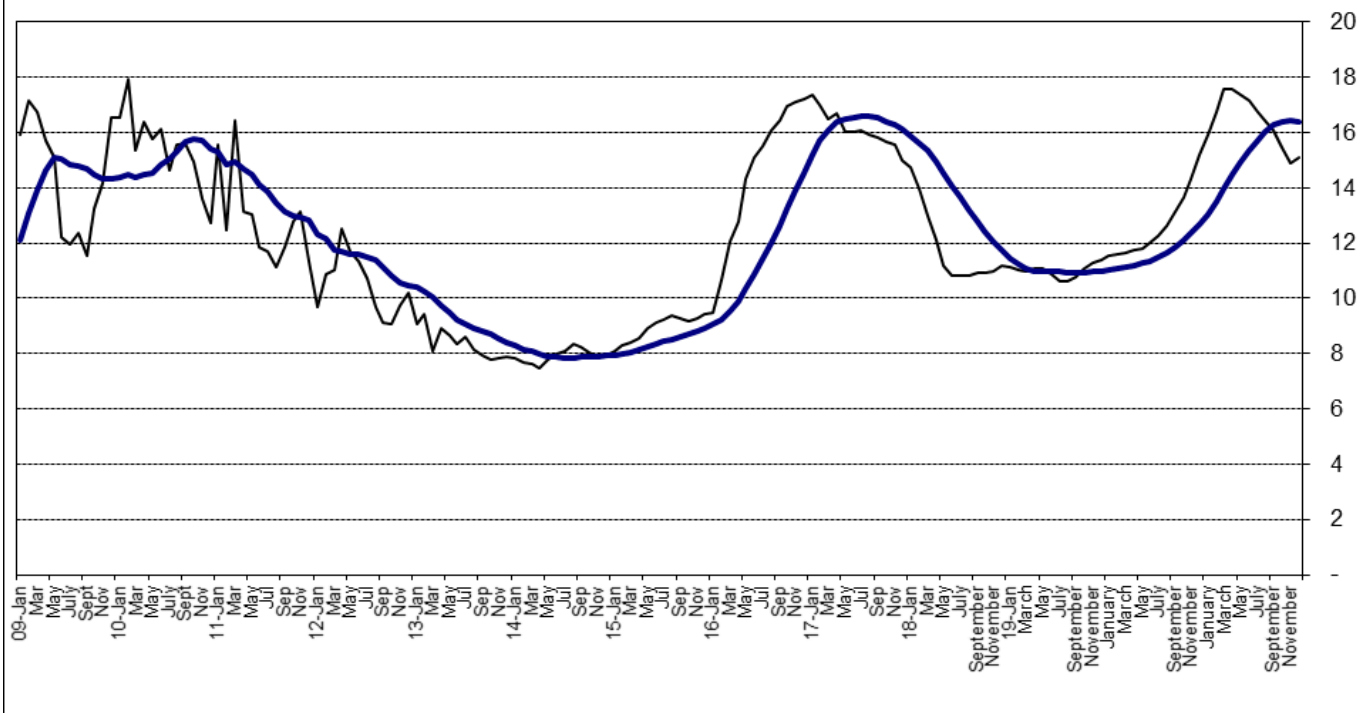
# FOOD INDEX

The composite food sub-index rose by 17.37 percent in December 2021 down by 2.19 percent points when compared to 19.56 percent in December 2020. This rise in the food sub-index was caused by increases in prices of Bread and cereals, Food product n.e.c, Meat, Fish, Potatoes, yam and other tuber, Soft drinks and fruit.

On month-on-month basis, the food sub-index increased by 2.19 percent in December 2021, up by 1.12 percent points from 1.07 percent recorded in November 2021.

The average annual rate of change of the Food sub-index for the twelve-month period ending December 2021 over the previous twelve-month average was 20.40 percent, 0.22 percent points lower from the average annual rate of change recorded in November 2021 (20.62) percent.

5. Inflation -Rural All Items (%)





NATIONAL BUREAU OF STATISTICS

## FOOD SUB-INDEX IN DECEMBER 2021 ROSE BY

**17.37%**

YEAR-ON-YEAR

(FROM 19.56% IN DECEMBER 2020)

**2.19%**

MONTH-ON-MONTH

(FROM 1.07% IN NOVEMBER 2021)

## CORE SUB-INDEX IN NOVEMBER 2021 ROSE BY

**13.87%**

YEAR-ON-YEAR

(FROM 11.37% IN DECEMBER 2020)

**1.12%**

MONTH-ON-MONTH

(FROM 1.26% IN NOVEMBER 2021)

## ALL ITEMS LESS FARM PRODUCE

The “All items less farm produce” or Core inflation, which excludes the prices of volatile agricultural produce stood at 13.87 percent in December 2021, up by 2.50 percent when compared with 11.37 percent recorded in December 2020.

On month-on-month basis, the core sub-index increased by 1.12 percent in December 2021. This was down by 0.13 percent when compared with 1.26 percent recorded in November 2021.

The highest increases were recorded in prices of Gas, Liquid fuel, Wine, Actual and imputed rentals for housing, Narcotics, Tobacco, Spirit, Cleaning, repair and hire of clothing, Garments, Shoes and other footwear and Clothing materials, other articles of clothing and clothing accessories.

The average annual rate of change of the All items less farm produce index was 13.16 percent for the twelve-month period ending December 2021; this is 0.21 percent points higher than 12.96 percent recorded in November 2021.



## STATE PROFILES

In analysing price movements under this section, note that the CPI is weighted by consumption expenditure patterns which differ across states. Accordingly, the weight assigned to a particular food or non-food item may differ from state to state making interstate comparisons of consumption basket inadvisable and potentially misleading.

### **All Items Inflation**

In December 2021, all items inflation on year on year basis was highest in Ebonyi (18.71%), Kogi (18.37%) and Bauchi (17.81%), while Kwara (12.32, Edo (13.46%) and%) Cross River (13.93%) recorded the slowest rise in headline Year on Year inflation.

On month-on-month basis, the highest increases was recorded in Ebonyi (4.01%), River (3.41%) and Taraba (3.28%), while Jigawa (0.56%) recorded the slowest rise with Cross River and Kaduna recording price deflation or negative inflation (general decrease in the price level).

### **Food Inflation**

In December 2021, food inflation on a year-on-year basis was highest in Kogi, (22.82%), Enugu (20.65%) and Lagos (20.27%), while Edo (13.24%), Kaduna (13.53%) and Sokoto (14.82%) recorded the slowest rise.

On month-on-month basis, December 2021 food inflation was highest in Cross River (4.09%), Akwa Ibom (3.88%) and River (3.79%), while Nasarawa (0.21%) , Jigawa (0.39%) recorded the slowest rise in inflation on month-on-month with Kaduna recording price deflation or negative inflation (general decrease in the price level of food or a negative food inflation rate).

## ALL ITEMS INFLATION

### YEAR-ON-YEAR

#### HIGHEST RISE IN

<b>EBONYI</b>	▶	<b>18.71%</b>
<b>KOGI</b>	▶	<b>18.37%</b>
<b>BAUCHI</b>	▶	<b>17.81%</b>

#### SLOWEST RISE IN

<b>KWARA</b>	▶	<b>12.32%</b>
<b>EDO</b>	▶	<b>13.46%</b>
<b>CROSS RIVER</b>	▶	<b>13.93%</b>

### MONTH-ON-MONTH

#### HIGHEST RISE IN

<b>EBONYI</b>	▶	<b>4.01%</b>
<b>RIVERS</b>	▶	<b>3.41%</b>
<b>TARABA</b>	▶	<b>3.28%</b>

#### SLOWEST RISE IN

<b>KADUNA</b>	▶	<b>-0.42%</b>
<b>CROSS RIVER</b>	▶	<b>-0.11%</b>
<b>JIGAWA</b>	▶	<b>0.56%</b>

## FOOD INFLATION

### YEAR-ON-YEAR

#### HIGHEST RISE IN

<b>KOGI</b>	▶	<b>22.82%</b>
<b>ENUGU</b>	▶	<b>20.65%</b>
<b>LAGOS</b>	▶	<b>20.27%</b>

#### SLOWEST RISE IN

<b>EDO</b>	▶	<b>13.24%</b>
<b>KADUNA</b>	▶	<b>13.53%</b>
<b>SOKOTO</b>	▶	<b>14.82%</b>

### MONTH-ON-MONTH

#### HIGHEST RISE IN

<b>CROSS RIVER</b>	▶	<b>4.09%</b>
<b>AKWA IBOM</b>	▶	<b>3.88%</b>
<b>RIVERS</b>	▶	<b>3.79%</b>

#### SLOWEST RISE IN

<b>KADUNA</b>	▶	<b>-1.64%</b>
<b>NASARAWA</b>	▶	<b>0.21%</b>
<b>JIGAWA</b>	▶	<b>0.39%</b>

# APPENDIX

<b>Table 1 Composite Consumer Price Index (Base November 2009 = 100)</b>															
	All Items Index	12-Month Average	Month-on-month change (%)	Year-on-year change (%)	12-Month average change (%)	All Items less Farm Produce	12-Month Average	Month-on-month change (%)	Year-on-year change (%)	12-Month average change (%)	Food	12-Month Average	Month-on-month change (%)	Year-on-year change (%)	12-Month average change (%)
December 2020	355.91	329.98	1.61	15.75	13.25	312.55	296.84	1.10	11.37	10.31	406.36	369.80	2.05	19.56	16.17
January 2021	361.23	334.24	1.49	16.47	13.62	316.48	299.64	1.26	11.85	10.52	413.82	375.69	1.83	20.57	16.66
February	366.80	338.76	1.54	17.33	14.05	320.30	302.58	1.21	12.38	10.77	421.63	381.97	1.89	21.79	17.25
March	372.51	343.53	1.56	18.17	14.55	323.71	305.61	1.06	12.67	11.01	429.66	388.65	1.90	22.95	17.93
April	376.14	348.34	0.97	18.12	15.04	326.91	308.69	0.99	12.74	11.25	433.92	395.35	0.99	22.72	18.58
May	379.94	353.15	1.01	17.93	15.50	330.95	311.89	1.24	13.15	11.50	438.49	402.01	1.05	22.28	19.18
June	383.96	357.98	1.06	17.75	15.93	333.64	315.11	0.81	13.09	11.75	443.37	408.63	1.11	21.83	19.72
July	387.51	362.76	0.93	17.38	16.30	338.00	318.51	1.31	13.72	12.05	447.18	415.10	0.86	21.03	20.16
August	391.48	367.50	1.02	17.01	16.60	340.61	321.87	0.77	13.41	12.29	451.93	421.46	1.06	20.30	20.50
September	395.98	372.20	1.15	16.63	16.83	344.84	325.34	1.24	13.74	12.55	457.61	427.70	1.26	19.57	20.71
October	399.87	376.80	0.98	15.99	16.96	347.59	328.73	0.80	13.24	12.73	461.77	433.66	0.91	18.34	20.75
November	404.18	381.29	1.08	15.40	16.98	351.96	332.30	1.26	13.85	12.96	466.71	439.37	1.07	17.21	20.62
December	411.52	385.93	1.82	15.63	16.95	355.91	335.91	1.12	13.87	13.16	476.95	445.25	2.19	17.37	20.40

Table 2 Composite Consumer Price Index (Base November 2009 = 100)																							
Weight	1000.0	513.10	405.55	132.88	507.06	518.00	10.87	76.50	167.34	50.30	30.04	65.08	6.80	6.87	39.44	12.12	16.63						
	All Items	All Items Less Farm Produce.	All Items Less Farm Produce and Energy	Imported Food	Food	Food & Non Alcoholic Bev.	Alcoholic Beverage, Tobacco and Kola	Clothing and Footwear	Housing, Water, Electricity, Gas and Other Fuel	Furniture & Household Equipment Maintenance.	Health.	Transport	Communication	Recreation & Culture.	Education	Restaurants & Hotels	Miscellaneous Goods & Services	Month-on (%)	Year-on (%)	12-month average (%)			
December	355.9	312.6	304.7	389.1	406.4	403.6	265.0	324.4	321.1	287.9	282.2	315.5	179.6	235.8	286.0	248.5	286.3	1.6	15.75	13.2			
2021 January	361.2	316.5	309.0	394.2	413.8	411.0	268.0	328.1	323.9	291.0	285.9	319.4	181.1	238.2	288.7	250.9	289.4	1.5	16.47	13.6			
February	366.8	320.3	312.8	399.4	421.6	418.7	271.0	331.9	326.8	294.2	289.7	323.5	182.6	240.6	291.6	253.3	292.6	1.5	17.33	14.1			
March	372.5	323.7	316.1	404.8	429.7	426.7	274.1	335.7	329.8	297.5	293.6	327.6	184.1	243.1	294.5	255.8	295.9	1.6	18.17	14.6			
April	376.1	326.9	319.5	410.1	433.9	430.9	277.0	339.6	332.1	300.9	296.9	331.2	185.7	245.7	297.2	258.3	299.1	1.0	18.12	15.0			
May	379.9	331.0	323.7	415.5	438.5	435.4	279.7	343.5	334.4	304.3	300.2	334.8	187.2	248.3	299.9	260.9	302.4	1.0	17.93	15.5			
June	384.0	333.6	326.4	421.1	443.4	440.3	282.6	347.6	336.9	307.8	303.6	338.5	188.8	251.0	302.9	263.6	305.7	1.1	17.75	15.9			
July	387.5	338.0	331.1	426.7	447.2	444.1	285.3	351.8	339.7	311.3	307.0	342.3	190.4	253.6	306.0	266.3	309.0	0.9	17.38	16.3			
August	391.5	340.6	333.4	432.5	451.9	448.8	287.8	355.7	342.5	314.5	310.1	346.0	192.0	256.2	309.1	269.0	312.2	1.0	17.01	16.6			
September	396.0	344.8	337.8	438.4	457.6	454.4	290.7	359.7	345.4	317.9	313.3	349.8	193.6	258.7	312.3	271.8	315.5	1.1	16.63	16.8			
October	399.9	347.6	340.5	444.3	461.8	458.5	293.8	364.0	348.7	321.8	316.9	354.2	195.2	261.3	315.7	274.7	318.9	1.0	15.99	17.0			
November	404.2	352.0	344.7	450.4	466.7	463.4	296.9	368.2	352.1	325.6	320.4	358.5	196.8	264.2	319.1	277.9	322.8	1.1	15.40	17.0			
December	411.5	355.9	348.4	456.5	477.0	473.5	301.3	373.3	356.7	329.6	324.3	363.0	198.5	267.6	322.9	281.1	326.8	1.8	15.63	17.0			

Table 3 Urban Consumer Price Index (Base November 2009 = 100)																				
	All Items	All Items less Farm Produce.	All Items less Farm Produce and Energy	Imported Food	Food & Non-Alcoholic Bev.	Alcoholic Beverages, Tobacco and Kola	Clothing and Footwear	Housing, Water, Electricity, Gas and Other Fuel	Furnishings & Household Equipment Maintenance.	Health.	Transportation	Communication	Recreation & Culture.	Education	Restaurants & Hotels	Miscellaneous Goods & Services	Month-on (%)	Year-on (%)	12-month average (%)	
Weight	1000.0	513.10	405.55	132.88	507.06	518.00	10.87	76.50	167.34	50.30	30.04	65.08	6.80	6.87	39.44	12.12	16.63			
December	364.8	320.5	311.4	397.1	417.1	413.5	262.7	336.1	337.3	294.2	291.5	341.8	181.4	247.0	292.2	260.2	298.4	1.6	16.33	13.9
2021 January	370.4	323.3	314.2	402.4	425.1	421.3	265.9	340.2	340.2	297.6	295.5	346.3	183.0	249.6	295.0	262.8	301.9	1.5	17.03	14.2
February	376.3	326.6	317.4	407.8	433.5	429.6	269.1	344.6	343.2	301.1	299.7	351.0	184.6	252.3	298.1	265.5	305.4	1.6	17.92	14.7
March	382.3	330.7	321.4	413.3	442.2	438.2	272.5	348.9	346.2	304.8	303.9	355.7	186.3	255.1	301.2	268.1	309.0	1.6	18.76	15.2
April	386.1	333.6	324.4	418.8	446.7	442.6	275.4	353.0	348.7	308.4	307.5	359.8	188.0	257.9	304.0	270.8	312.5	1.0	18.68	15.6
May	390.1	338.4	329.6	424.4	451.6	447.5	278.2	357.3	351.2	311.9	311.1	363.8	189.6	260.7	306.9	273.7	316.0	1.0	18.51	16.1
June	394.4	341.8	333.0	430.1	456.9	452.7	281.1	361.9	353.8	315.7	314.7	368.0	191.4	263.7	310.2	276.7	319.6	1.1	18.35	16.5
July	398.2	346.3	337.8	435.9	461.2	456.9	284.0	366.4	356.7	319.4	318.5	372.3	193.1	266.7	313.5	279.6	323.3	1.0	18.01	16.9
August	402.5	349.7	341.1	441.8	466.3	462.0	286.7	370.8	359.7	323.1	321.8	376.6	194.8	269.6	316.9	282.6	326.8	1.1	17.59	17.2
September	407.3	354.2	345.9	447.9	472.6	468.2	289.7	375.1	362.7	326.8	325.2	381.2	196.5	272.4	320.4	285.7	330.5	1.2	17.19	17.4
October	411.5	358.4	350.3	454.0	477.0	472.6	293.0	379.9	366.0	331.0	329.1	386.3	198.3	275.3	324.1	289.0	334.3	1.0	16.52	17.5
November	416.1	362.4	354.0	460.2	482.4	477.9	296.3	384.4	369.5	335.1	332.9	391.2	200.0	278.6	327.8	292.6	338.8	1.1	15.92	17.5
December	423.8	366.8	358.1	466.5	493.7	489.0	300.9	389.9	374.1	339.3	337.0	396.4	201.8	282.3	331.8	296.1	343.2	1.9	16.17	17.5



Table 4 Rural Consumer Price Index (Base November 2009 = 100)																				
	All Items	All Items less Farm Produce.	All Items less Farm Produce and Energy	Imported Food	Food & Non-Alcoholic Bever.	Alcoholic Beverages and Kola	Clothing and Footwear	Housing, Water, Electricity, Gas and Other Fuel	Furniture & Household Equipment Maintenance.	Health.	Transport	Communication	Recreation & Culture.	Education	Restaurants & Hotels	Miscellaneous Goods & Services	Month-on (%)	Year-on (%)	12-month average (%)	
Weights	1000.0	513.10	405.55	132.88	507.06	518.00	10.87	76.50	167.34	50.30	30.04	65.08	6.80	6.87	39.44	12.12	16.63			
December	348.3	306.0	299.1	382.4	397.9	395.8	268.3	313.6	305.7	283.5	274.7	286.4	176.2	226.2	280.9	238.9	276.2	1.6	15.20	12.7
2021 January	353.4	310.8	304.6	387.4	404.9	402.8	271.0	316.9	308.3	286.3	278.1	289.8	177.6	228.3	283.4	241.1	279.0	1.5	15.92	13.0
February	358.7	315.0	309.0	392.4	412.2	410.0	273.8	320.3	311.2	289.3	281.7	293.2	179.0	230.5	286.1	243.3	282.0	1.5	16.77	13.5
March	364.2	317.9	311.6	397.6	419.7	417.4	276.7	323.7	314.2	292.3	285.3	296.8	180.4	232.8	288.9	245.5	285.0	1.5	17.60	14.0
April	367.7	321.3	315.4	402.8	423.7	421.5	279.5	327.3	316.3	295.5	288.4	299.8	181.8	235.2	291.5	247.9	288.0	1.0	17.57	14.5
May	371.3	324.7	318.8	408.1	428.0	425.7	282.2	330.9	318.5	298.7	291.5	303.0	183.3	237.6	294.1	250.3	291.0	1.0	17.36	14.9
June	375.1	326.8	320.9	413.5	432.6	430.3	284.9	334.6	320.8	302.0	294.6	306.2	184.7	239.9	296.9	252.8	294.1	1.0	17.16	15.4
July	378.3	331.1	325.5	419.0	436.0	433.7	287.5	338.5	323.6	305.4	297.8	309.4	186.2	242.3	299.7	255.3	297.2	0.9	16.75	15.7
August	382.1	333.1	327.0	424.7	440.4	438.1	289.9	342.1	326.3	308.2	300.7	312.5	187.7	244.6	302.6	257.7	300.2	1.0	16.43	16.0
September	386.3	337.1	331.0	430.4	445.6	443.2	292.7	345.7	329.2	311.4	303.7	315.8	189.1	246.9	305.6	260.2	303.1	1.1	16.08	16.3
October	389.9	338.6	332.4	436.3	449.5	447.1	295.7	349.6	332.3	315.0	307.0	319.6	190.6	249.3	308.7	262.9	306.2	1.0	15.48	16.4
November	394.0	343.3	337.0	442.2	454.1	451.7	298.5	353.5	335.7	318.6	310.4	323.3	192.1	251.8	311.9	265.7	309.6	1.0	14.89	16.4
December	401.0	346.8	340.3	448.2	463.6	461.0	302.8	358.3	340.3	322.3	314.0	327.1	193.7	254.9	315.5	268.7	313.2	1.8	15.11	16.4

**Table 5 Combined Urban And Rural State Consumer Price Index**

State	Dec-20		Nov-21		Dec-21					
	Food	All	Food	All	Food	All	MoM		YoY	
		Items		Items		Items	Food	All Items	Food	All Items
Abia	396.8	354.6	459.0	401.7	475.0	414.3	3.48	3.14	19.72	16.83
Abuja	398.4	347.9	459.8	395.1	471.2	404.7	2.47	2.42	18.28	16.33
Adamawa	402.0	347.0	454.1	392.1	467.7	397.3	2.99	1.34	16.33	14.49
Akwa Ibom	406.7	352.7	459.9	397.8	477.8	410.5	3.88	3.17	17.48	16.38
Anambra	407.9	363.8	466.0	413.4	472.4	419.6	1.38	1.49	15.81	15.35
Bauchi	363.8	405.5	413.4	464.6	419.6	477.7	1.49	2.83	15.35	17.81
Bayelsa	413.8	361.7	466.7	405.3	482.4	418.2	3.36	3.17	16.57	15.61
Benue	408.3	355.2	469.7	404.8	481.8	408.2	2.57	0.84	17.99	14.93
Borno	403.1	341.7	460.1	386.9	467.2	391.4	1.54	1.15	15.91	14.52
Cross River	413.1	333.6	474.1	380.5	493.5	380.1	4.09	- 0.11	19.44	13.93
Delta	406.8	336.9	472.3	383.3	480.8	388.8	1.81	1.44	18.20	15.39
Ebonyi	411.0	360.1	479.4	411.0	493.9	427.4	3.02	4.01	20.15	18.71
Edo	422.7	371.9	465.3	413.5	478.7	421.9	2.88	2.04	13.24	13.46
Ekiti	402.2	330.7	472.7	378.7	482.2	384.9	2.01	1.63	19.90	16.38
Enugu	408.2	338.0	479.0	385.8	492.5	391.8	2.81	1.54	20.65	15.89
Gombe	396.7	356.0	469.2	412.9	476.7	418.2	1.60	1.28	20.17	17.48
Imo	402.0	325.3	465.0	369.3	472.8	373.7	1.67	1.18	17.60	14.89
Jigawa	392.6	356.2	461.4	411.9	463.2	414.2	0.39	0.56	17.96	16.30
Kaduna	415.4	370.9	479.5	425.1	471.6	423.3	- 1.64	- 0.42	13.53	14.11
Kano	408.2	365.8	473.6	417.8	480.3	426.0	1.42	1.95	17.66	16.45
Katsina	394.0	327.6	452.5	371.6	456.2	374.1	0.82	0.68	15.79	14.20
Kebbi	413.6	380.8	472.5	432.0	482.1	440.3	2.04	1.93	16.58	15.63
Kogi	427.2	386.4	506.7	444.3	524.7	457.4	3.54	2.95	22.82	18.37
Kwara	425.0	428.2	484.2	470.5	499.4	481.0	3.14	2.22	17.49	12.32
Lagos	408.5	365.2	478.3	419.7	491.3	427.6	2.71	1.88	20.27	17.07
Nassarawa	401.3	361.4	470.5	414.9	471.5	418.6	0.21	0.90	17.50	15.82
Niger	405.9	366.3	462.0	414.0	472.7	423.2	2.31	2.23	16.45	15.54
Ogun	414.9	378.1	472.1	428.7	488.5	440.9	3.49	2.85	17.75	16.62
Ondo	408.0	363.9	471.8	415.9	485.6	425.8	2.93	2.37	19.04	16.98
Osun	409.3	357.1	465.7	401.7	480.0	413.3	3.05	2.89	17.26	15.73
Oyo	410.1	372.3	479.0	430.3	486.6	437.0	1.58	1.55	18.65	17.39
Plateau	410.5	368.7	472.5	420.4	479.1	426.0	1.39	1.34	16.69	15.55
Rivers	409.1	354.6	463.4	399.2	480.9	412.8	3.79	3.41	17.54	16.43
Sokoto	419.7	365.8	471.7	411.7	482.0	419.7	2.17	1.93	14.82	14.72
Taraba	405.8	351.4	461.7	396.0	477.5	409.0	3.42	3.28	17.67	16.40
Yobe	412.8	371.2	469.2	418.1	475.6	423.1	1.37	1.21	15.21	14.01
Zamfara	413.3	369.8	470.3	419.0	475.7	423.7	1.14	1.14	15.11	14.58

*Note: Indices may not be used for inter-state price comparison because market baskets differ from state to state*

# CONTACT



## National Bureau of Statistics

Head Office

Plot 762 Independence Avenue,  
Central Business District, Garki  
Abuja.

## Sunday J. Ichedi

Information Desk

Head, Communication & Public  
Relations Department (C&PRD)  
Phone: +2348037051701  
sjichedi@nigerianstat.gov.ng

## Moses Mathew

Statistical Information Officer

Phone: +2347069071157  
matmoses@nigerianstat.gov.ng

## Nuhu Joseph Waney II

Chief of Protocol

Phone: +2348037020063  
jwnuhu@nigerianstat.gov.ng



@nigerianstat



NBSNigeria



Nbs\_nigeria

