



NATIONAL BUREAU OF STATISTICS

Consumer Price Index

October 2021

(BASE PERIOD NOVEMBER 2009 = 100)

Report Date: November

Data Source: National Bureau of Statistics (NBS)

CONTENT

Brief Methodology -----	3
All Item Index -----	7
Food Index -----	12
All Item Less Farm Produce -----	14
State Profile -----	15
Appendix -----	18
Contact -----	23

BRIEF METHODOLOGY

The CPI measures the average change over time in prices of goods and services consumed by people for day-to-day living. The construction of the CPI combines economic theory, sampling and other statistical techniques using data from other surveys to produce a weighted measure of average price changes in the Nigerian economy. The weighting occurs to capture the importance of the selected commodities in the entire index. The production of the CPI requires skills of economists, statisticians, computer scientists, data collectors and others.

Key in the construction of the price index is the selection of the market basket of goods and services. Every month, 10,534 informants spread across the country provide price data for the computation of the CPI. The market items currently comprise of 740 goods and services regularly priced. The first stage in the calculation of the CPI is the collection of prices on each item (740 goods and services) from outlets in each sector (rural or urban) for each state. Prices are then averaged for each item per sector across the state. The next step is to use the average price to calculate the basic index for each commodity: The current year price of each commodity is compared with a base year's price to obtain a relative price.

Next, we use the Laspeyres formula to compute an aggregated index for each class (which has a multitude of commodities which have similar consumption purposes): Here the sum of the product of weights (obtained from the expenditure survey) and relative prices for each item is divided by the sum of the weight of the items in that class, and the result multiplied by 100 gives the required index number. This index number is still classified according to the urban or rural classification sector for each of the 36 states and the FCT. This yields 85 classes then 48 groups which are then reclassified into 12 Divisions to derive:

1. The Country Composite Index
2. The Urban National Index
3. The Rural National Index
4. The Combined Urban and Rural State Composite Index

The survey methodology generates 3774 all items indices for all states and the FCT.

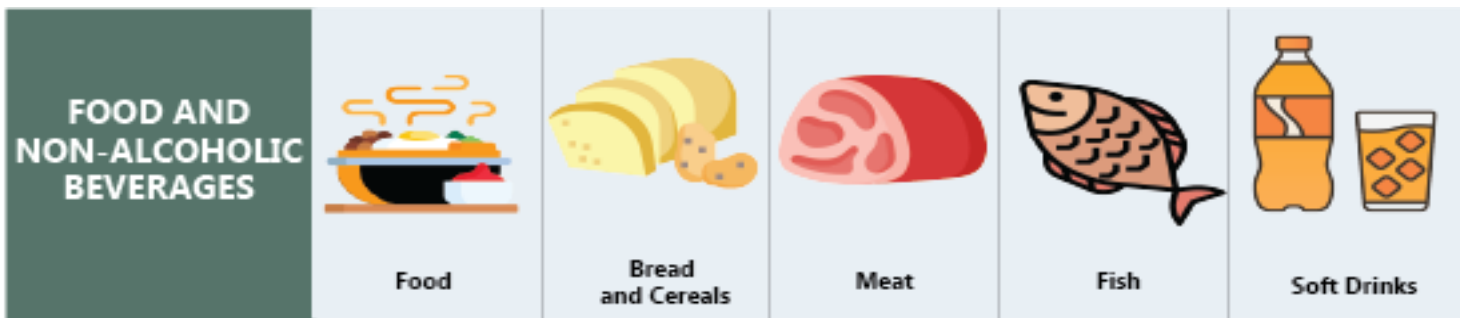
This edition of the Statistical News contains the revised Consumer Price Index (CPI) based on Nigeria Living Standard Survey (NLSS) 2003/2004. The consumption expenditure data were re-valued to November 2009, which is the base period for the revised CPI.

The May 2003 and September 1985 based indices are being continued using factors derived from the new CPI. These indices will yield the same price change for any commodity group contained in all the series.

A new sub index – Imported Food Index- is available in the revised CPI.

Note: The urban and rural indices were weighted with the ratio of their populations to the national i.e., 0.455 and 0.545 respectively to compute the composite indices at the 12 Classification of Individual Consumption by Purpose (COICOP) functions and all items levels. This may cause variance between a recalculated all items index using the weights and All Items index published, because the weights were computed only from consumption expenditure survey result. The following breakdown highlights a non-exhaustive list of the components of the current CPI:

The following breakdown highlights a non-exhaustive list of the components of the current CPI:



HOUSING, WATER, ELECTRICITY AND GAS



Actual and imputed rentals for housing



Water supply



Liquid fuel



Electricity



Gas

FURNISHINGS, HOUSEHOLD EQUIPMENT



Furniture and furnishings



Household textiles



Repair of household appliances



Carpets and other floor coverings



Non-durable household goods

HEALTH



Pharmaceutical products



Medical services



Dental services



Hospital services



Paramedical services

TRANSPORT



Motor cars



Motor cycles



Passenger transport by air



Passenger transport by road



Passenger transport by sea and inland waterways

COMMUNICATION



Postal services



Telephone and telefax equipment



Telephone and telefax services

RECREATION AND CULTURE



Photographic development



Musical instrument



Recreational and sporting services



Games of chance



Audio-visual, photographic and information processing equipment

EDUCATION



Books & stationery

RESTAURANTS AND HOTELS



Accommodation services



Catering services

MISCELLANEOUS GOODS AND SERVICES



Hairdressing salons and personal grooming establishments



Jewellery, clocks and watches



Appliances, articles and products for personal care



Insurance



Other services

ALL ITEMS INDEX

The consumer price index, (CPI) which measures inflation increased by 15.99 percent (year-on-year) in October 2021. This is 1.76 percent points higher than the rate recorded in October 2020 (14.23) percent.

Increases were recorded in all COICOP divisions that yielded the Headline index.

On month-on-month basis, the Headline index increased by 0.98 percent in October 2021, this is 0.17 percent rate lower than the rate recorded in September 2021 (1.15) percent.

The percentage change in the average composite CPI for the twelve months period ending October 2021 over the average of the CPI for the previous twelve months period was 16.96 percent, showing 0.13 percent point from 16.83 percent recorded in September 2021.

The urban inflation rate increased by 16.52 percent (year-on-year) in October 2021 from 14.81 percent recorded in October 2020, while the rural inflation rate increased by 15.48 percent in October 2021 from 13.68 percent in October 2020.

On a month-on-month basis, the urban index rose by 1.02 percent in October 2021, down by 0.19 percentage point the rate recorded in September 2021 (1.21) percent, while the rural index also rose by 0.95 percent in October 2021, down by 0.15 percentage point the rate that was recorded in September 2021 (1.10) percent.

The twelve-month year-on-year average percentage change for the urban index is 17.53 percent in October 2021. This is higher than 17.41 percent reported in September 2021, while the corresponding rural inflation rate in October 2021 is 16.39 percent compared to 16.26 percent recorded in September 2021.



NATIONAL BUREAU OF STATISTICS

HEADLINE CPI IN OCTOBER 2021 ROSE BY

15.99%

YEAR-ON-YEAR

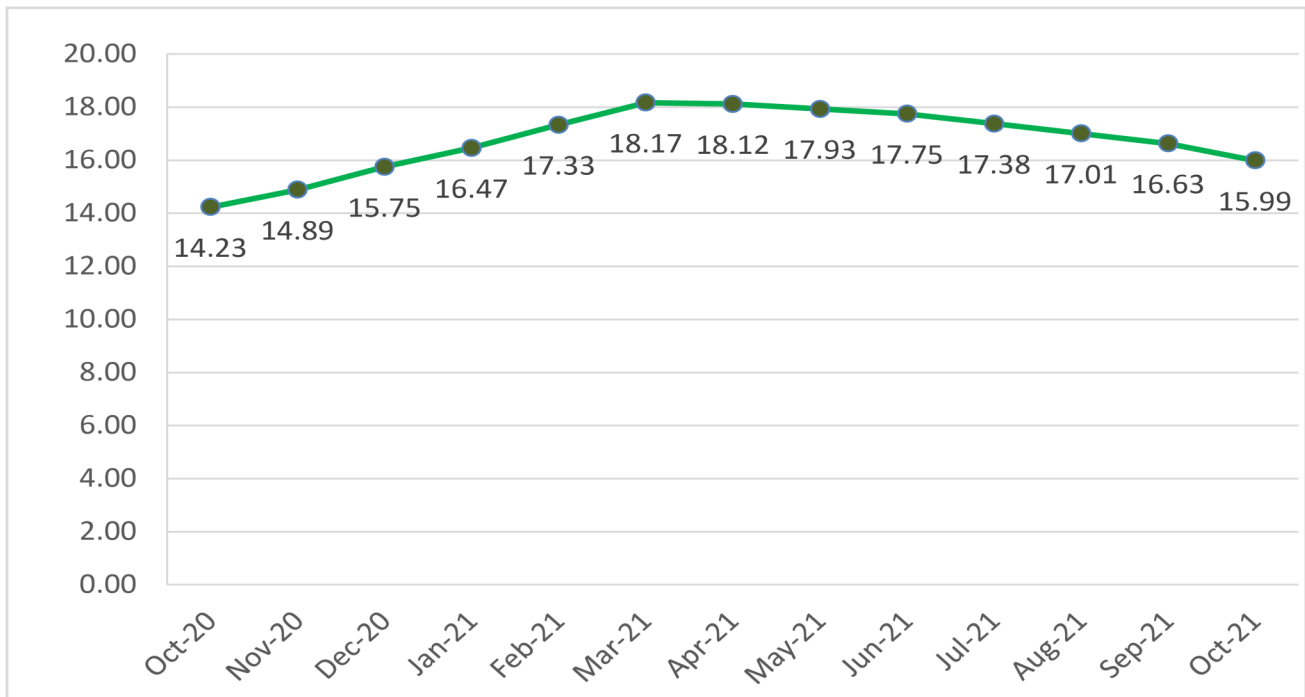
(FROM 14.23% IN OCTOBER 2020)

0.98%

MONTH-ON-MONTH

(FROM 1.15% IN SEPTEMBER 2021)

CPI (%) HEADLINE 12-MONTH SERIES



The CPI (Consumer Price Index) measures the average change over time in prices of goods and services consumed by people for day-to-day living i.e it measures the inflation rate



NATIONAL BUREAU OF STATISTICS

URBAN

16.52%

YEAR-ON-YEAR

(FROM 14.81% IN OCTOBER 2020)

1.02%

MONTH-ON-MONTH

(FROM 1.21% IN SEPTEMBER 2021)



URBAN AND RURAL INDEX IN OCTOBER 2021



RURAL

15.48%

YEAR-ON-YEAR

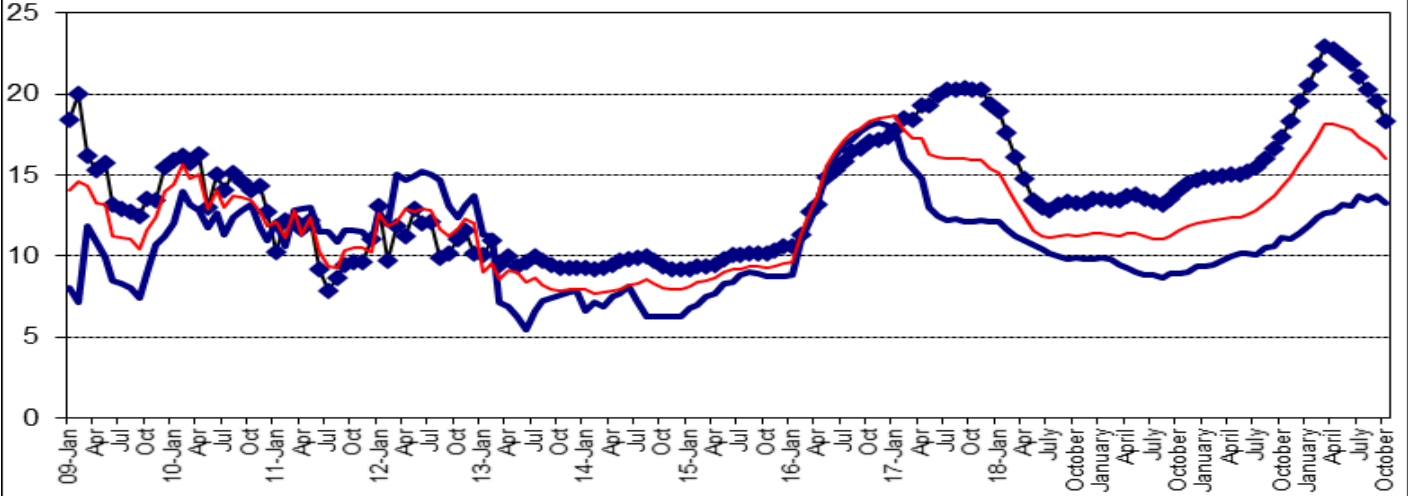
(FROM 13.68% IN OCTOBER 2020)

0.95%

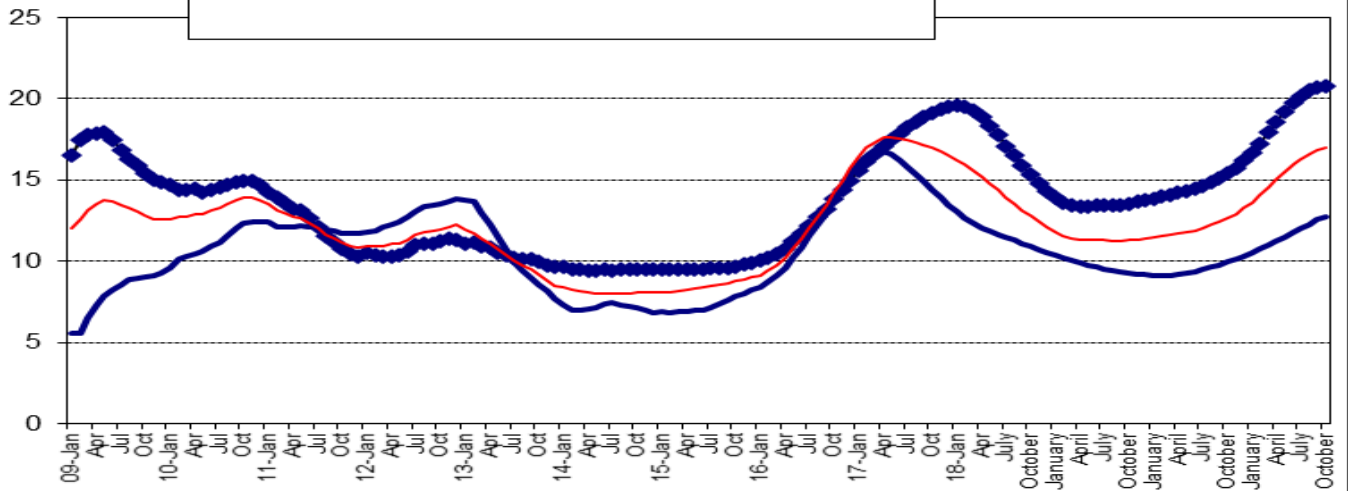
MONTH-ON-MONTH

(FROM 1.10% IN SEPTEMBER 2021)

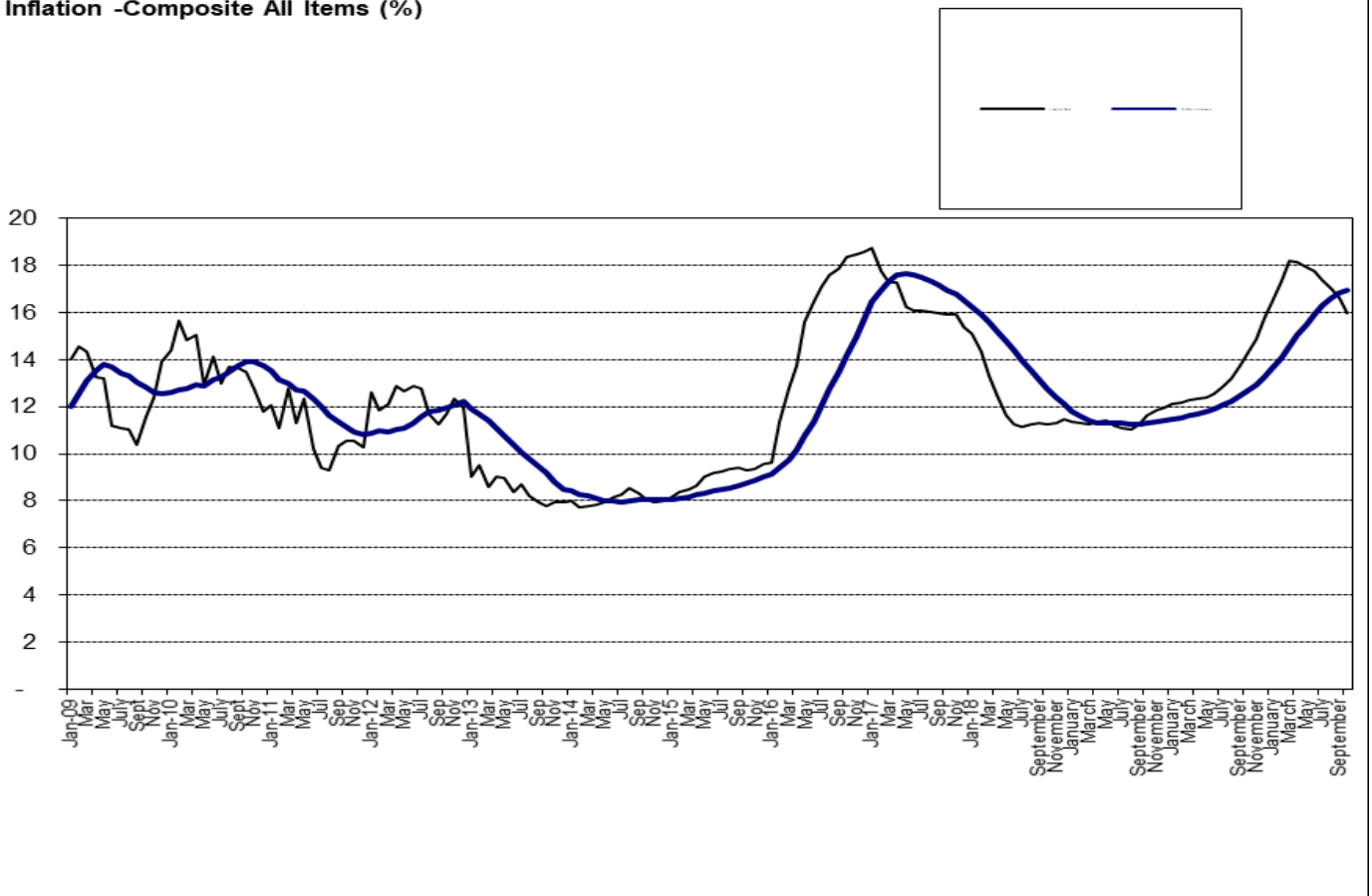
1. Inflation: Composite Year-on Change (%)



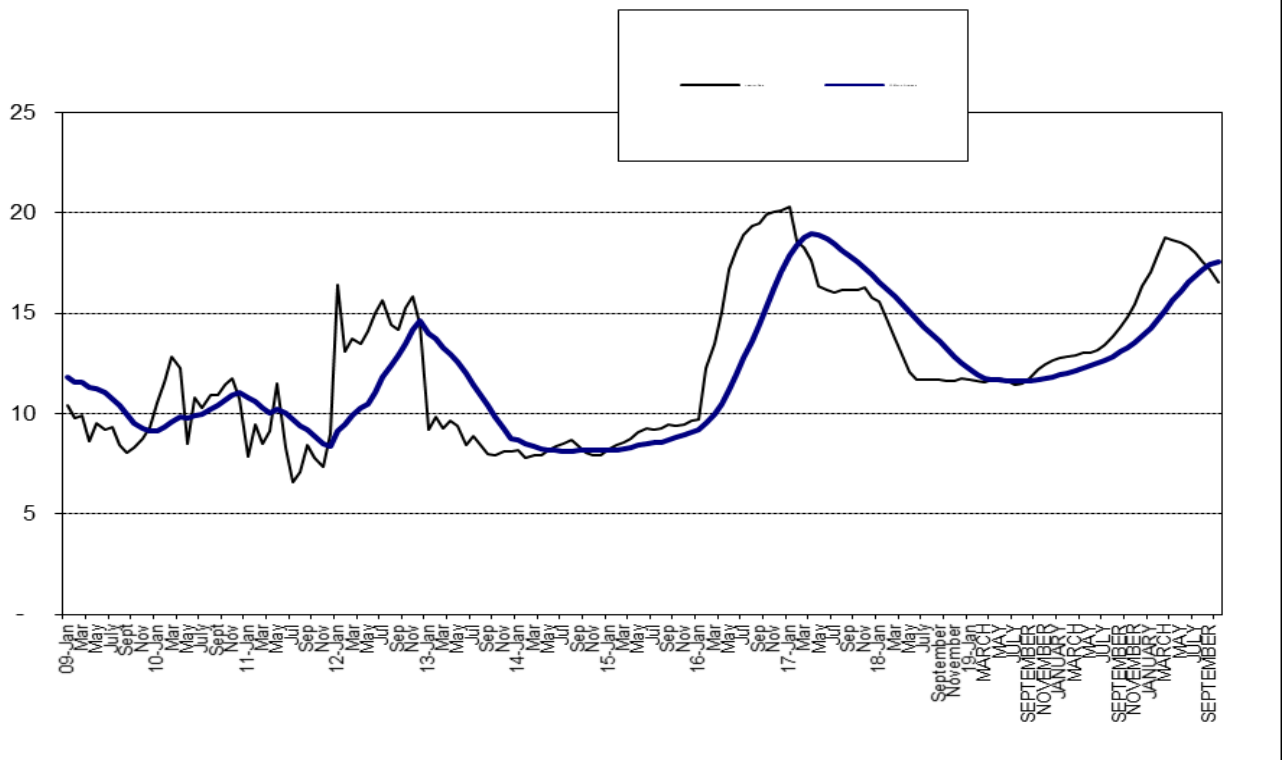
2. Inflation: Composite 12-Month Average Change (%)



3. Inflation -Composite All Items (%)



4. Inflation -Urban All Items (%)



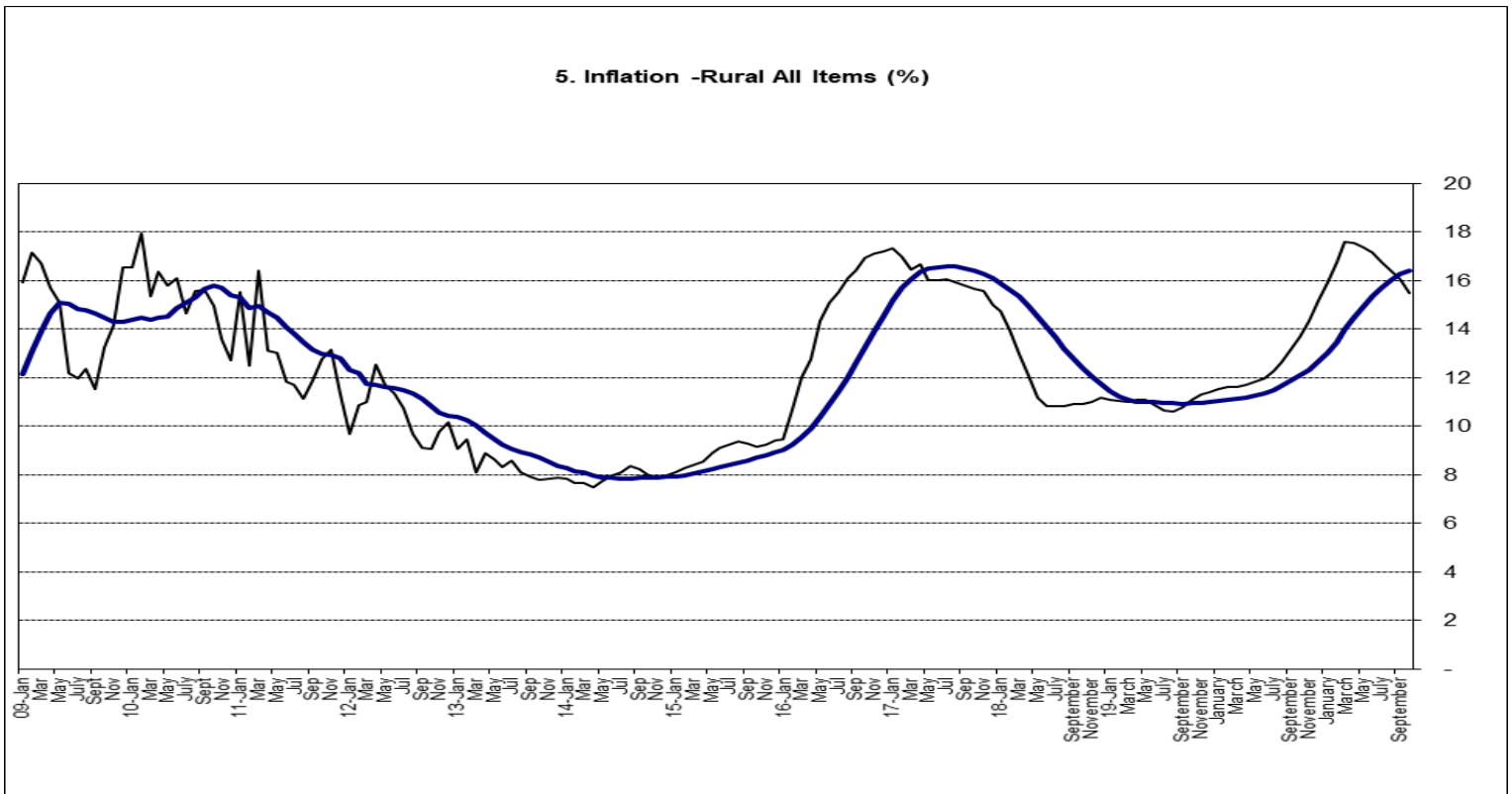
FOOD INDEX

The composite food index rose by 18.34 percent in October 2021 compared to 17.38 percent in October 2020.

This rise in the food index was caused by increases in prices of Food product n.e.c, Coffee, tea and cocoa, Milk, cheese and eggs, Bread and cereals, Vegetables and Potatoes, yam and other tuber.

On month-on-month basis, the food sub-index increased by 0.91 percent in October 2021, down by 0.35 percent points from 1.26 percent recorded in September 2021.

The average annual rate of change of the Food sub-index for the twelve-month period ending October 2021 over the previous twelve-month average was 20.75 percent, 0.04 percent points from the average annual rate of change recorded in September 2021 (20.71) percent.





NATIONAL BUREAU OF STATISTICS

FOOD SUB-INDEX IN OCTOBER 2021 ROSE BY

18.34%

YEAR-ON-YEAR
(FROM 17.38% IN OCTOBER 2020)

0.91%

MONTH-ON-MONTH
(FROM 1.26% IN SEPTEMBER 2021)

CORE SUB-INDEX IN OCTOBER 2021 ROSE BY

13.24%

YEAR-ON-YEAR
(FROM 11.14% IN OCTOBER 2020)

0.80%

MONTH-ON-MONTH
(FROM 1.24% IN SEPTEMBER 2021)

ALL ITEMS LESS FARM PRODUCE

The “All items less farm produce” or Core inflation, which excludes the prices of volatile agricultural produce stood at 13.24 percent in October 2021, up by 2.10 percent points when compared with 11.14 percent recorded in October 2020.

On month-on-month basis, the core sub-index increased by 0.80 percent in October 2021. This was down by 0.44 percent point when compared with 1.24 percent recorded in September 2021.

The highest increases were recorded in prices of Gas, Fuels and lubricants for personal transport equipments, Vehicle spare parts, Non-durable household goods, Solid fuel, Passenger transport by road, Passenger transport by air, Garments, Cleaning, repair and hire of clothing, Major household appliances whether electric or not, Wine, Clothing materials, other articles of clothing and clothing accessories and Liquid fuel.

The average 12-month annual rate of change of the index was 12.73 percent for the twelve-month period ending October 2021; this is 0.18 percent points higher than 12.55 percent recorded in September 2021.

STATE PROFILES

In analysing price movements under this section, note that the CPI is weighted by consumption expenditure patterns which differ across states. Accordingly, the weight assigned to a particular food or non-food item may differ from state to state making interstate comparisons of consumption basket inadvisable and potentially misleading.

All Items Inflation

In October 2021, all items inflation on year-on-year basis was highest in Bauchi (19.63%), Gombe (19.33%) and Jigawa (19.07%), while Kwara (11.82%), Edo (13.31%) and Rivers (13.66%) recorded the slowest rise in headline year-on-year inflation.

On month-on-month basis however, October 2021, recorded the highest increases in Cross River (2.14%), Benue/Kebbi (2.02%) and Yobe (1.71%), While the slowest rise in inflation for all item were Adamawa (0.18%), Kano and Kogi recording price deflation or negative inflation (general decrease in the prices of goods and services or a negative inflation rate).

Food Inflation

In October 2021, food inflation on a year on year basis was highest in Kogi (23.69%), Gombe (23.29%) and Jigawa (21.91%), while Edo (13.16%), Rivers (14.46%) and Adamawa (15.42%) recorded the slowest rise in year on year food inflation.

On month-on-month basis however, October 2021 food inflation was highest in Kebbi (2.29%), Yobe (2.23%) and Akwa Ibom (2.16%), while Kano, Kogi, Osun and Oyo recorded price deflation or negative inflation (general decrease in the general price level of food or a negative food inflation rate).

ALL ITEMS INFLATION

YEAR-ON-YEAR

HIGHEST RISE IN

BAUCHI	▶	19.63%
GOMBE	▶	19.33%
JIGAWA	▶	19.07%

SLOWEST RISE IN

KWARA	▶	11.82%
EDO	▶	13.31%
RIVERS	▶	13.66%

MONTH-ON-MONTH

HIGHEST RISE IN

CROSS RIVER	▶	2.14%
BENUE	▶	2.02%
KEBBI	▶	2.02%

SLOWEST RISE IN

KOGI	▶	-1.00%
KANO	▶	-0.11%
ADAMAWA	▶	0.18%

FOOD INFLATION

YEAR-ON-YEAR

HIGHEST RISE IN

KOGI	▶	23.69%
GOMBE	▶	23.29%
JIGAWA	▶	21.91%

SLOWEST RISE IN

EDO	▶	13.16%
RIVERS	▶	14.46%
ADAMAWA	▶	15.42%

MONTH-ON-MONTH

HIGHEST RISE IN

KEBBI	▶	2.29%
YOBE	▶	2.23%
AKWA IBOM	▶	2.16%

SLOWEST RISE IN

KOGI	▶	-0.77%
KANO	▶	-0.33%
OYO	▶	-0.21%

APPENDIX

Table A1 Composite Consumer Price Index (Base November 2009 = 100)

		All Items Index				All Items less Farm Produce				Food							
	Weights	Monthly	12- Month Aver- age	Month- on change (%)	Year-on change (%)	12- Month Aver- age	Month- on change (%)	Year-on change (%)	12- Month Aver- age	Month- on change (%)	Year-on change (%)	12- Month Aver- age	Month- on change (%)	Year-on change (%)	12- Month Aver- age	Month- on change (%)	Year-on change (%)
		1000.0				513.10				507.06							
2020	October	344.73	322.17	1.54	14.23	12.66	306.95	291.62	1.25	11.14	9.96	390.21	359.13	1.96	17.38	15.42	
	November	350.26	325.95	1.60	14.89	12.92	309.14	294.18	0.71	11.05	10.14	398.19	364.26	2.04	18.30	15.75	
	December	355.91	329.98	1.61	15.75	13.25	312.55	296.84	1.10	11.37	10.31	406.36	369.80	2.05	19.56	16.17	
2021	January	361.23	334.24	1.49	16.47	13.62	316.48	299.64	1.26	11.85	10.52	413.82	375.69	1.83	20.57	16.66	
	February	366.80	338.76	1.54	17.33	14.05	320.30	302.58	1.21	12.38	10.77	421.63	381.97	1.89	21.79	17.25	
	March	372.51	343.53	1.56	18.17	14.55	323.71	305.61	1.06	12.67	11.01	429.66	388.65	1.90	22.95	17.93	
	April	376.14	348.34	0.97	18.12	15.04	326.91	308.69	0.99	12.74	11.25	433.92	395.35	0.99	22.72	18.58	
	May	379.94	353.15	1.01	17.93	15.50	330.95	311.89	1.24	13.15	11.50	438.49	402.01	1.05	22.28	19.18	
	June	383.96	357.98	1.06	17.75	15.93	333.64	315.11	0.81	13.09	11.75	443.37	408.63	1.11	21.83	19.72	
	July	387.51	362.76	0.93	17.38	16.30	338.00	318.51	1.31	13.72	12.05	447.18	415.10	0.86	21.03	20.16	
	August	391.48	367.50	1.02	17.01	16.60	340.61	321.87	0.77	13.41	12.29	451.93	421.46	1.06	20.30	20.50	
	September	395.98	372.20	1.15	16.63	16.83	344.84	325.34	1.24	13.74	12.55	457.61	427.70	1.26	19.57	20.71	
	October	399.87	376.80	0.98	15.99	16.96	347.59	328.73	0.80	13.24	12.73	461.77	433.66	0.91	18.34	20.75	

Table A 2 Composite Consumer Price Index (Base November 2009 = 100)

	All Items	All Items less Farm Produce.	All Items less Farm Produce and Energy	Imported Food	Food	Food & Non Alcoholic Bev.	Alcoholic Beverage Tobacco and Kola	Clothing and Footwear	Housing Water, Electricity, Gas and Other Fuel	Furnishings & Household Equipment Maintenance.	Health.	Transport	Communication	Recreation & Culture.	Education	Restaurants & Hotels	Miscellaneous Goods & Services	Month-on (%)	Year-on (%)	12-month average (%)
Weights	1000.0	513.10	405.55	132.88	507.06	518.00	10.87	76.50	167.34	50.30	30.04	65.08	6.80	6.87	39.44	12.12	16.63			
2020	October	344.73	306.95	299.27	378.97	390.21	387.69	259.79	317.41	315.74	281.93	307.92	176.45	231.27	280.77	243.81	280.09	1.54	14.23	12.66
	November	350.26	309.14	301.31	384.01	398.19	395.56	262.37	320.85	318.42	284.90	311.68	178.00	233.53	283.37	246.13	283.14	1.60	14.89	12.92
	December	355.91	312.55	304.70	389.09	406.36	403.63	265.00	324.40	321.12	287.93	315.52	179.57	235.84	286.04	248.54	286.29	1.61	15.75	13.25
2021	January	361.23	316.48	308.95	394.23	413.82	411.00	267.96	328.06	323.88	291.00	319.42	181.06	238.17	288.71	250.92	289.38	1.49	16.47	13.62
	February	366.80	320.30	312.83	399.43	421.63	418.72	270.98	331.85	326.78	294.21	323.48	182.59	240.59	291.56	253.32	292.59	1.54	17.33	14.05
	March	372.51	323.71	316.05	404.75	429.66	426.65	274.14	335.70	329.76	297.49	327.61	184.10	243.15	294.51	255.75	295.86	1.56	18.17	14.55
	April	376.14	326.91	319.46	410.07	433.92	430.89	276.98	339.55	332.06	300.87	331.18	185.66	245.72	297.16	258.25	299.13	0.97	18.12	15.04
	May	379.94	330.95	323.74	415.50	438.49	435.42	279.72	343.48	334.41	304.25	334.79	187.24	248.30	299.91	260.87	302.37	1.01	17.93	15.50
	June	383.96	333.64	326.39	421.06	443.37	440.26	282.56	347.59	336.87	307.76	338.51	188.84	250.96	302.91	263.59	305.70	1.06	17.75	15.93
	July	387.51	338.00	331.10	426.68	447.18	444.05	285.26	351.80	339.68	311.30	307.04	190.43	253.64	305.98	266.34	309.04	0.93	17.38	16.30
	August	391.48	340.61	333.40	432.48	451.93	448.75	287.78	355.73	342.52	314.51	310.15	192.02	256.16	309.12	268.99	312.22	1.02	17.01	16.60
	September	395.98	344.84	337.78	438.35	457.61	454.38	290.68	359.70	345.43	317.92	313.33	193.57	258.71	312.30	271.79	315.53	1.15	16.63	16.83
	October	399.87	347.59	340.52	444.31	461.77	458.52	293.82	363.99	348.69	321.76	316.87	195.16	261.33	315.69	274.73	318.94	0.98	15.99	16.96

Table A3 Urban Consumer Price Index (Base November 2009 = 100)

	All Items	All Items less Farm Produce.	All Items less Farm Produce and Energy	Imported Food	Food	Food & Non-Alcoholic Bev.	Alcoholic Beverage and Tobacco Kola	Clothing and Footwear	Housing Water, Electricity, Gas and Other Fuel	Furnishings & Household Equipment Maintenance.	Health.	Transportation	Communication	Recreation & Culture.	Education	Restaurants & Hotels	Miscellaneous Goods & Services	Month-on (%)	Year-on (%)	12-month average (%)
Weights	1000.00	552.64	418.67	155.45	476.88	490.59	11.19	65.50	191.51	49.81	27.40	74.54	10.14	7.14	40.05	14.49	17.65			
2020	October	353.1	313.8	304.8	386.6	399.7	396.3	257.3	328.2	331.8	283.9	333.1	178.0	242.0	286.6	255.0	291.6	1.60	14.81	13.29
	November	358.9	316.5	307.3	391.8	408.3	404.8	260.0	332.1	334.5	287.7	337.4	179.7	244.4	289.4	257.5	295.0	1.65	15.47	13.55
	December	364.8	320.5	311.4	397.1	417.1	413.5	262.7	336.1	337.3	291.5	341.8	181.4	247.0	292.2	260.2	298.4	1.65	16.33	13.86
2021	January	370.4	323.3	314.2	402.4	425.1	421.3	265.9	340.2	297.6	295.5	346.3	183.0	249.6	295.0	262.8	301.9	1.52	17.03	14.23
	February	376.3	326.6	317.4	407.8	433.5	429.6	269.1	344.6	343.2	299.7	351.0	184.6	252.3	298.1	265.5	305.4	1.58	17.92	14.66
	March	382.3	330.7	321.4	413.3	442.2	438.2	272.5	348.9	346.2	303.9	355.7	186.3	255.1	301.2	268.1	309.0	1.60	18.76	15.15
	April	386.1	333.6	324.4	418.8	446.7	442.6	275.4	353.0	348.7	307.5	359.8	188.0	257.9	304.0	270.8	312.5	0.99	18.68	15.63
	May	390.1	338.4	329.6	424.4	451.6	447.5	278.2	357.3	351.2	311.1	363.8	189.6	260.7	306.9	273.7	316.0	1.04	18.51	16.09
	June	394.4	341.8	333.0	430.1	456.9	452.7	281.1	361.9	353.8	314.7	368.0	191.4	263.7	310.2	276.7	319.6	1.09	18.35	16.51
	July	398.2	346.3	337.8	435.9	461.2	456.9	284.0	366.4	356.7	318.5	372.3	193.1	266.7	313.5	279.6	323.3	0.98	18.01	16.89
	August	402.5	349.7	341.1	441.8	466.3	462.0	286.7	370.8	359.7	321.8	376.6	194.8	269.6	316.9	282.6	326.8	1.06	17.59	17.19
	September	407.3	354.2	345.9	447.9	472.6	468.2	289.7	375.1	362.7	325.2	381.2	196.5	272.4	320.4	285.7	330.5	1.21	17.19	17.41
	October	411.5	358.4	350.3	454.0	477.0	472.6	293.0	379.9	366.0	329.1	386.3	198.3	275.3	324.1	289.0	334.3	1.02	16.52	17.53

Table A4 Rural Consumer Price Index (Base November 2009 = 100)

	All Items	All Items less Farm Produce.	All Items less Farm Produce and Energy	Imported Food	Food	Food & Non-Alcoholic Bev.	Alcoholic Beverage, Tobacco and Kola	Clothing and Footwear	Housing Water, Electricity, Gas and Other Fuel	Furnishings & Household Equipment Maintenance.	Health	Transport	Communication	Recreation & Culture.	Education	Restaurant & Hotels	Miscellaneous Goods & Services	Month-on-month (%)	Year-on (%)	12-month average (%)
Weights	1000.00	480.09	394.61	114.03	532.25	540.89	10.61	85.68	147.16	50.72	32.25	57.19	4.01	6.65	38.93	10.14	15.78			
2020																				
October	337.66	301.23	294.68	372.60	382.77	380.87	263.22	307.41	300.40	278.02	268.17	279.85	173.31	221.99	275.93	234.59	270.53	1.48	13.68	12.09
November	342.93	303.01	296.32	377.51	390.20	388.24	265.75	310.48	303.02	280.74	271.42	283.09	174.74	224.07	278.38	236.70	273.32	1.56	14.33	12.35
December	348.34	305.95	299.11	382.41	397.87	395.83	268.33	313.65	305.66	283.51	274.71	286.39	176.17	226.16	280.92	238.88	276.22	1.58	15.20	12.67
2021																				
January	353.44	310.82	304.55	387.39	404.90	402.79	271.02	316.90	308.34	286.33	278.11	289.75	177.55	228.29	283.43	241.05	279.04	1.46	15.92	13.04
February	358.74	315.03	309.00	392.42	412.18	410.02	273.78	320.25	311.21	289.28	281.67	293.23	178.97	230.47	286.13	243.27	281.98	1.50	16.77	13.48
March	364.18	317.86	311.61	397.60	419.66	417.43	276.69	323.69	314.16	292.28	285.27	296.77	180.38	232.82	288.91	245.53	284.98	1.52	17.60	13.99
April	367.65	321.30	315.36	402.79	423.72	421.47	279.48	327.26	316.29	295.48	288.40	299.85	181.82	235.20	291.47	247.87	288.03	0.95	17.57	14.48
May	371.26	324.71	318.84	408.10	428.02	425.74	282.15	330.87	318.48	298.71	291.52	302.97	183.26	237.56	294.09	250.28	291.05	0.98	17.36	14.94
June	375.05	326.81	320.90	413.53	432.57	430.26	284.91	334.62	320.80	302.04	294.62	306.20	184.74	239.92	296.86	252.77	294.14	1.02	17.16	15.36
July	378.33	331.08	325.49	419.02	435.99	433.67	287.50	338.53	323.56	305.38	297.81	309.44	186.22	242.33	299.71	255.34	297.24	0.87	16.75	15.73
August	382.07	333.07	327.01	424.69	440.43	438.08	289.91	342.08	326.32	308.20	300.73	312.54	187.70	244.60	302.62	257.70	300.17	0.99	16.43	16.03
September	386.26	337.06	330.99	430.42	445.61	443.22	292.74	345.67	329.16	311.37	303.71	315.83	189.12	246.91	305.55	260.25	303.15	1.10	16.08	16.26
October	389.93	338.55	332.37	436.25	449.55	447.14	295.68	349.57	332.34	314.97	307.00	319.56	190.58	249.28	308.70	262.91	306.19	0.95	15.48	16.39

Table A5 Combined Urban And Rural State Consumer Price Index (Base Period: November 2009 = 100)										
State	Oct-20		Sep-21		Oct-21		MoM		YoY	
	Food	All Items	Food	All Items	Food	All Items	Food	All Items	Food	All Items
Abia	380.94	343.94	447.94	394.91	453.98	399.62	1.35	1.19	19.17	16.19
Abuja	389.95	337.83	451.26	388.60	456.82	393.35	1.23	1.22	17.15	16.43
Adamawa	388.25	336.67	447.84	384.64	448.12	385.34	0.06	0.18	15.42	14.46
Akwa Ibom	392.60	342.58	450.80	391.49	460.54	396.97	2.16	1.40	17.31	15.88
Anambra	389.94	350.84	457.78	405.13	463.07	409.45	1.16	1.07	18.75	16.71
Bauchi	350.84	387.94	405.13	457.49	409.45	464.10	1.07	1.44	16.71	19.63
Bayelsa	392.44	348.44	458.40	398.81	461.02	401.24	0.57	0.61	17.48	15.15
Benue	391.16	340.58	458.54	391.27	467.11	399.17	1.87	2.02	19.42	17.20
Borno	384.61	330.18	453.20	379.13	455.94	382.98	0.60	1.02	18.55	15.99
Cross River	391.92	321.31	463.31	363.89	469.24	371.66	1.28	2.14	19.73	15.67
Delta	392.52	328.26	463.07	375.29	468.59	379.08	1.19	1.01	19.38	15.48
Ebonyi	393.68	350.25	466.16	405.72	471.30	409.42	1.10	0.91	19.72	16.89
Edo	405.99	360.21	456.69	403.51	459.40	408.17	0.59	1.15	13.16	13.31
Ekiti	391.18	322.95	461.09	369.26	463.38	371.70	0.50	0.66	18.46	15.10
Enugu	389.96	328.70	465.88	376.05	466.94	378.43	0.23	0.63	19.74	15.13
Gombe	377.04	342.54	455.34	402.80	464.86	408.76	2.09	1.48	23.29	19.33
Imo	391.29	317.37	454.20	360.98	454.50	363.35	0.07	0.66	16.15	14.49
Jigawa	377.44	343.55	455.48	405.59	460.13	409.05	1.02	0.85	21.91	19.07
Kaduna	397.88	357.56	469.04	414.73	472.95	419.12	0.83	1.06	18.87	17.22
Kano	393.28	355.30	466.01	412.42	464.47	411.95	-0.33	-0.11	18.10	15.94
Katsina	381.22	318.67	443.23	363.52	447.01	365.98	0.85	0.68	17.26	14.85
Kebbi	396.82	367.94	458.43	420.95	468.94	429.47	2.29	2.02	18.17	16.72
Kogi	404.79	370.36	504.56	442.61	500.70	438.17	-0.77	-1.00	23.69	18.31
Kwara	406.19	416.25	471.85	462.51	476.48	465.43	0.98	0.63	17.30	11.82
Lagos	395.38	355.58	467.89	410.02	471.49	414.18	0.77	1.01	19.25	16.48
Nasarawa	391.53	351.77	459.12	407.07	467.87	412.29	1.91	1.28	19.50	17.20
Niger	388.99	355.24	453.32	407.20	459.27	411.14	1.31	0.97	18.07	15.74
Ogun	394.31	364.32	466.94	421.19	470.39	427.02	0.74	1.38	19.29	17.21
Ondo	389.50	350.76	461.02	406.00	467.90	411.48	1.49	1.35	20.13	17.31
Osun	394.76	346.70	459.62	397.18	459.17	398.70	-0.10	0.38	16.32	15.00
Oyo	392.24	358.92	477.40	424.42	476.38	425.95	-0.21	0.36	21.45	18.68
Plateau	396.70	359.38	458.41	410.83	468.14	416.98	2.12	1.50	18.01	16.03
Rivers	399.24	349.12	451.08	392.91	456.98	396.81	1.31	0.99	14.46	13.66
Sokoto	398.27	352.95	460.06	402.38	466.71	408.11	1.45	1.42	17.18	15.63
Taraba	388.11	339.89	454.36	390.05	458.26	393.26	0.86	0.82	18.07	15.70
Yobe	396.05	358.44	455.73	407.16	465.91	414.11	2.23	1.71	17.64	15.53
Zamfara	396.85	358.17	457.26	408.28	464.30	413.66	1.54	1.32	17.00	15.49

Note: Indices may not be used for inter-state price comparison because market baskets differ from state to state

CONTACT



National Bureau of Statistics

Head Office

Plot 762 Independence Avenue,
Central Business District, Garki
Abuja.

Sunday J. Ichedi

Information Desk

Head, Communication & Public
Relations Department (C&PRD)
Phone: +2348037051701
sjichedi@nigerianstat.gov.ng

Moses Mathew

Statistical Information Officer

Phone: +2347069071157
matmoses@nigerianstat.gov.ng

Nuhu Joseph Waney II

Chief of Protocol

Phone: +2348037020063
jwnuhu@nigerianstat.gov.ng



@nigerianstat



NBSNigeria



Nbs_nigeria

