



NATIONAL BUREAU OF STATISTICS

Road Transport Data

(Full Year 2019)

Report Date: June 2020

Data Source: National Bureau of Statistics / Federal Road Safety Corps (FRSC)

CONTENTS

Executive Summary	1
All States Data	
Abia	2
FCT, Abuja	4
Adamawa	6
Akwa ibom	8
Anambra	10
Bauchi	12
Bayelsa	14
Benue	16
Borno	18
Cross river	20
Delta	22
Ebonyi	24
Edo	26
Ekiti	28
Enugu	30
Gombe	32
Imo	34
Jigawa	36
Kaduna	38
Kano	40
Katsina	42
Kebbi	44
Kogi	46
Kwara	48
Lagos	50
Nassarawa	52
Niger	54
Ogun	56
Ondo	58
Osun	60
Oyo	62
Plateau	64
Rivers	66
Sokoto	68
Taraba	70
Yobe	72
Zamfara	74
Total	76
Percentage Change of Crashes and Fatalities (2013-2019)	78
Road Traffic Crashes on Monthly Basis	79
Sex Distribution of Persons Killed In Road Traffic Crashes	82
Adult/Child Distribution of Persons Killed In Road Traffic Crashes	83
Sex Distribution of Persons Injured In Road Traffic Crashes	84
Adult/Child Distribution of Persons Injured In Road Traffic Crashes	85
Number of Vehicles Involved In Road Traffic Crashes	86
Category of Vehicle Involved In Road Traffic Crashes	87
Number Plate Production	88
Methodology	89
Appendix	90
Acknowledgements/Contacts	101

EXECUTIVE SUMMARY

The Full Year 2019 road transport data reflected that 11,072 road crashes occurred in 2019. Speed violation is reported as the major cause of road crashes in 2019 and it accounted for 48% of the total road crashes reported, Wrongful overtaking followed closely as it accounted for 9% of the total road crashes recorded while Poor Weather recorded the least of the total road crashes reported.

A total of 35,981 Nigerians got injured in the road traffic crashes recorded. 33,831 of the 35,981 Nigerians that got injured, representing 94% of the figure, are adults while the remaining 2,150 Nigerians, representing 6% of the figure are children. 27,120 male Nigerians, representing 75%, got injured in road crashes in 2019 while 8,861 female Nigerians, representing 25% got injured.

Similarly, a total of 5,483 Nigerians got killed in the road traffic crashes recorded in 2019. 5,059 of the 5,483 Nigerians that got killed, representing 92% of the figure, are adults while the remaining 424 Nigerians, representing 8% of the figure are children. 4,255 male Nigerians, representing 78%, got killed in road crashes in 2019 while 1,228 female Nigerians, representing 22% got killed.

A total of 17,500 vehicles were involved in road traffic crashes in 2019. Car is reported to be the major type of vehicle involved in road crashes and it accounted for 31% of the vehicles involved in road crashes reported followed by Motorcycle and Minibus as they both accounted for 20% and 19% respectively. Data on the category of vehicles involved in road crashes in 2019 reflected that 64.68% of vehicles are commercial (11,319), 34.13% are private (5,972), 1.17% are government (204) and the diplomat with five (5) vehicles involved.

A total of 791,627 national drivers licenses were produced in 2019. Lagos and FCT produced the highest number of drivers' licenses while Zamfara and Kebbi States produced the least numbers of national drivers' license while a total of 757,341 vehicle number plates were produced in 2019.



NATIONAL DRIVER'S LICENSE PRODUCTION

TOTAL
2019
PRODUCTION



13,195

1.7%

STATE ANALYSIS OF VEHICLES INVOLVED IN RTCs IN 2019



BICYCLE

0



MOTORCYCLE

16



TRICYCLE

14



CAR

43



SUV(JEEP)

21



VAN

0



MINIBUS

43



LUXURY BUS

3



PICK-UP

2



TRUCK

17



TANKER

2



TRAILER

9



OTHERS

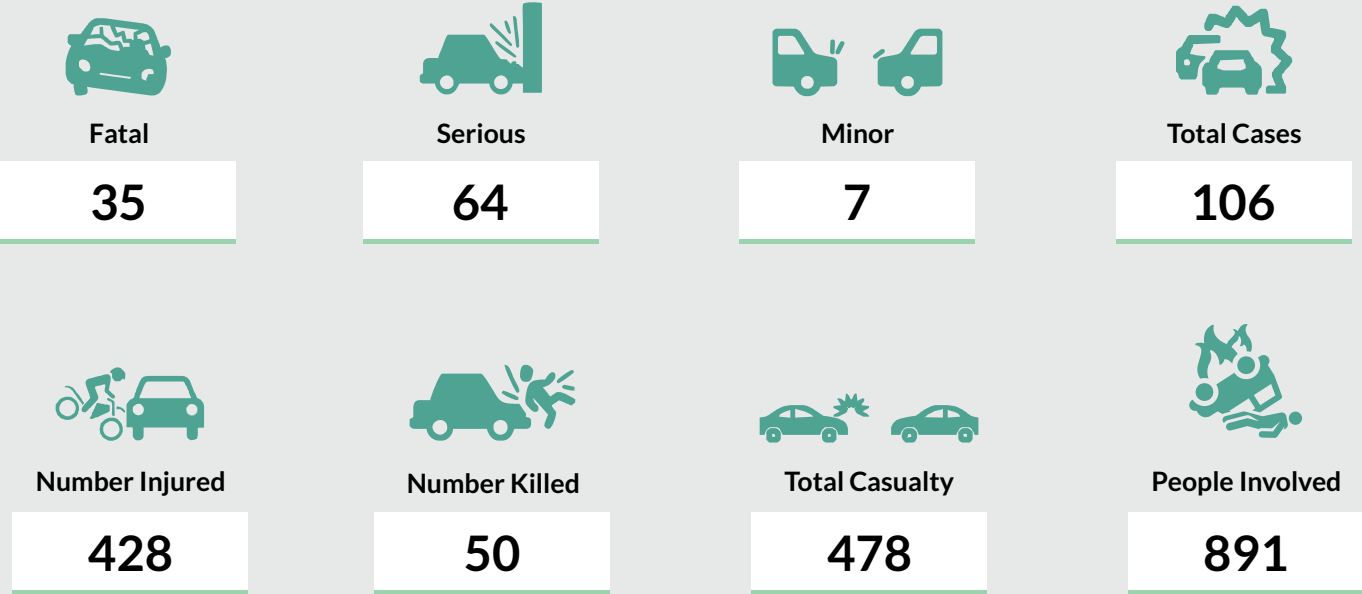
0



TOTAL

170

STATE ANALYSIS OF ROAD TRAFFIC CRASHES IN 2019



CAUSATIVE FACTORS OF ROAD TRAFFIC CRASHES IN YEAR 2019 BY STATE





NATIONAL DRIVER'S LICENSE PRODUCTION

TOTAL
2019
PRODUCTION



85,147

10.8%

STATE ANALYSIS OF VEHICLES INVOLVED IN RTCs IN 2019



BICYCLE

0



MOTORCYCLE

200



TRICYCLE

31



CAR

975



SUV(JEEP)

79



VAN

2



MINIBUS

237



LUXURY BUS

0



PICK-UP

50



TRUCK

141



TANKER

12



TRAILER

37



OTHERS

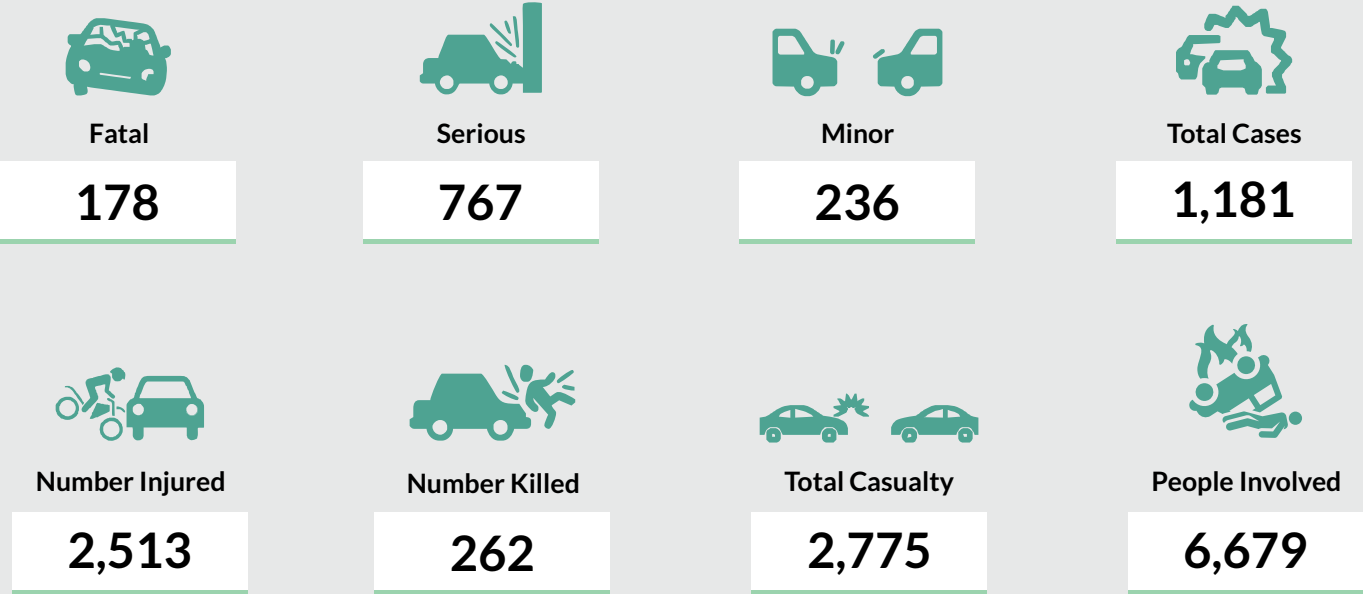
3



TOTAL

1767

STATE ANALYSIS OF ROAD TRAFFIC CRASHES IN 2019



CAUSATIVE FACTORS OF ROAD TRAFFIC CRASHES IN YEAR 2019 BY STATE





NATIONAL DRIVER'S LICENSE PRODUCTION

TOTAL
2019
PRODUCTION



6,682

0.8%

STATE ANALYSIS OF VEHICLES INVOLVED IN RTCs IN 2019



BICYCLE

3



MOTORCYCLE

18



TRICYCLE

70



CAR

117



SUV(JEEP)

2



VAN

0



MINIBUS

19



LUXURY BUS

0



PICK-UP

12



TRUCK

7



TANKER

1



TRAILER

5



OTHERS

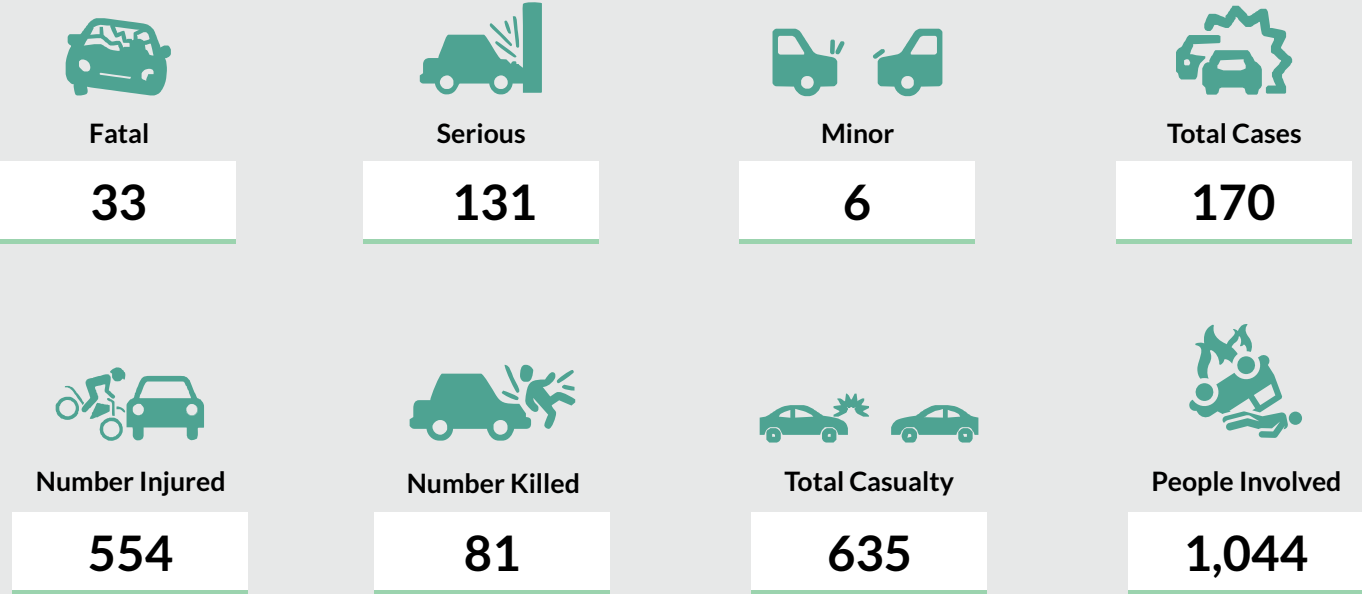
0



TOTAL

254

STATE ANALYSIS OF ROAD TRAFFIC CRASHES IN 2019



CAUSATIVE FACTORS OF ROAD TRAFFIC CRASHES IN YEAR 2019 BY STATE





NATIONAL DRIVER'S LICENSE PRODUCTION

TOTAL
2019
PRODUCTION



11,086

1.4%

STATE ANALYSIS OF VEHICLES INVOLVED IN RTCs IN 2019



BICYCLE

1



MOTORCYCLE

26



TRICYCLE

7



CAR

38



SUV(JEEP)

3



VAN

0



MINIBUS

29



LUXURY BUS

1



PICK-UP

2



TRUCK

29



TANKER

4



TRAILER

0



OTHERS

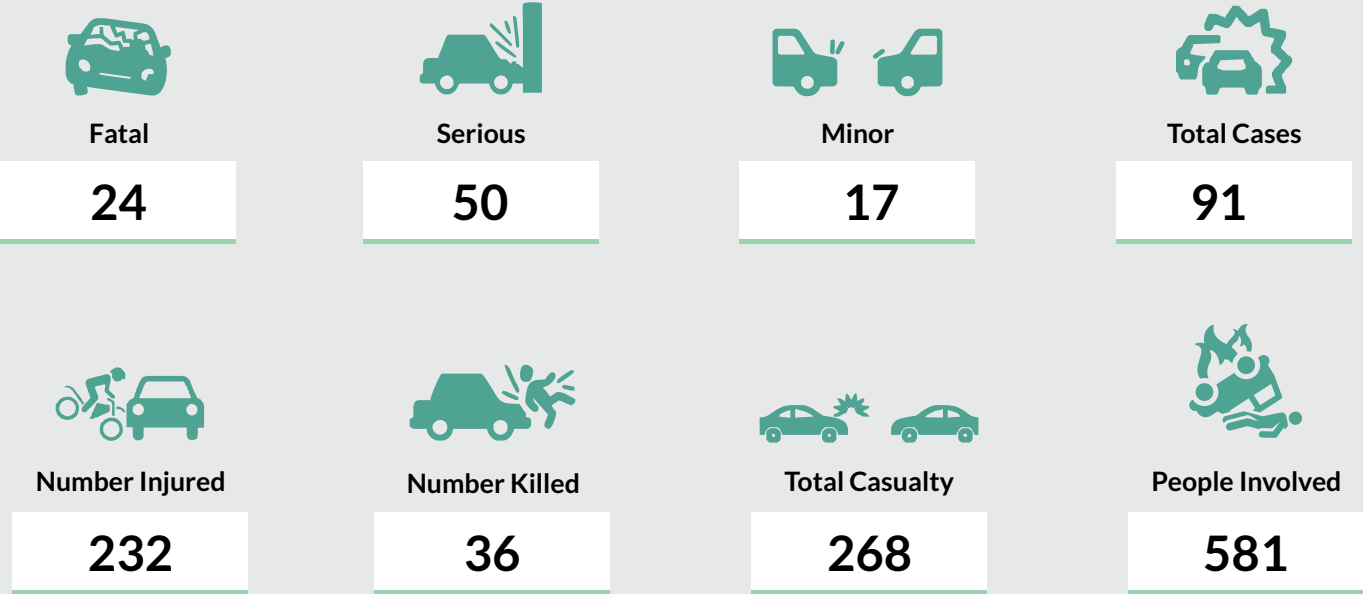
0



TOTAL

140

STATE ANALYSIS OF ROAD TRAFFIC CRASHES IN 2019



CAUSATIVE FACTORS OF ROAD TRAFFIC CRASHES IN YEAR 2019 BY STATE





NATIONAL DRIVER'S LICENSE PRODUCTION

TOTAL
2019
PRODUCTION



23,977

3.0%

STATE ANALYSIS OF VEHICLES INVOLVED IN RTCs IN 2019



BICYCLE

0



MOTORCYCLE

35



TRICYCLE

15



CAR

51



SUV(JEEP)

24



VAN

0



MINIBUS

109



LUXURY BUS

3



PICK-UP

5



TRUCK

85



TANKER

15



TRAILER

17



OTHERS

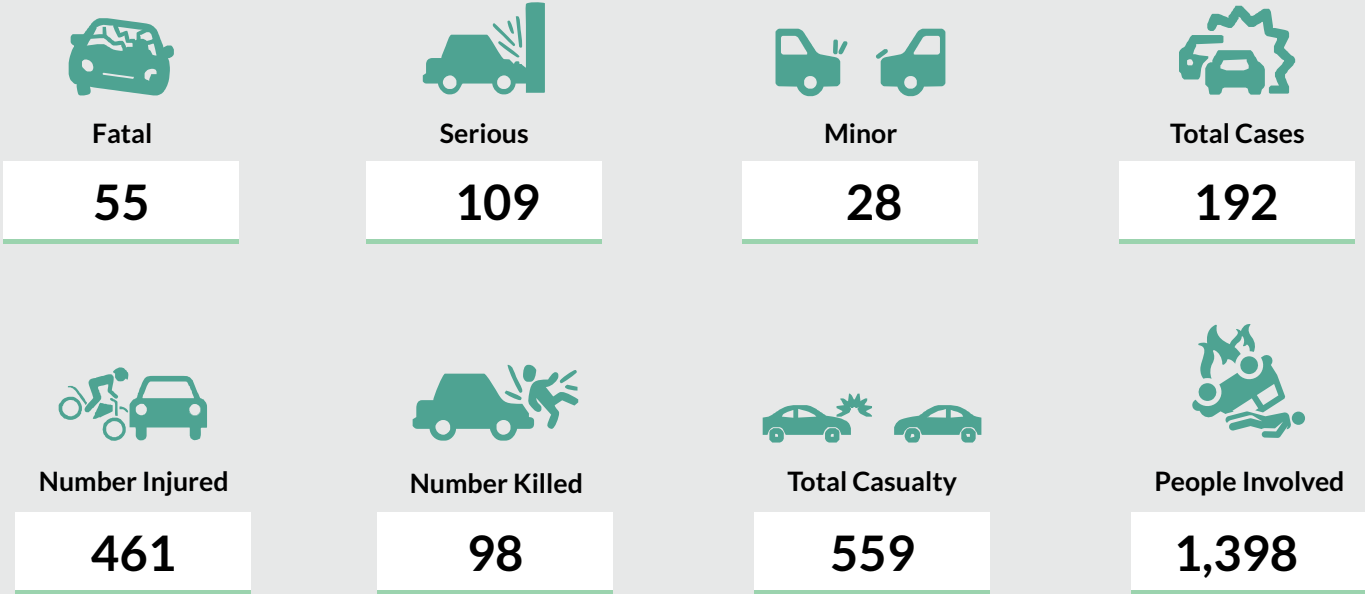
2



TOTAL

361

STATE ANALYSIS OF ROAD TRAFFIC CRASHES IN 2019



CAUSATIVE FACTORS OF ROAD TRAFFIC CRASHES IN YEAR 2019 BY STATE





NATIONAL DRIVER'S LICENSE PRODUCTION

TOTAL
2019
PRODUCTION



7,942

1.0%

STATE ANALYSIS OF VEHICLES INVOLVED IN RTCs IN 2019



BICYCLE

2



MOTORCYCLE

121



TRICYCLE

8



CAR

188



SUV (JEEP)

9



VAN

3



MINIBUS

154



LUXURY BUS

0



PICK-UP

28



TRUCK

28



TANKER

0



TRAILER

21



OTHERS

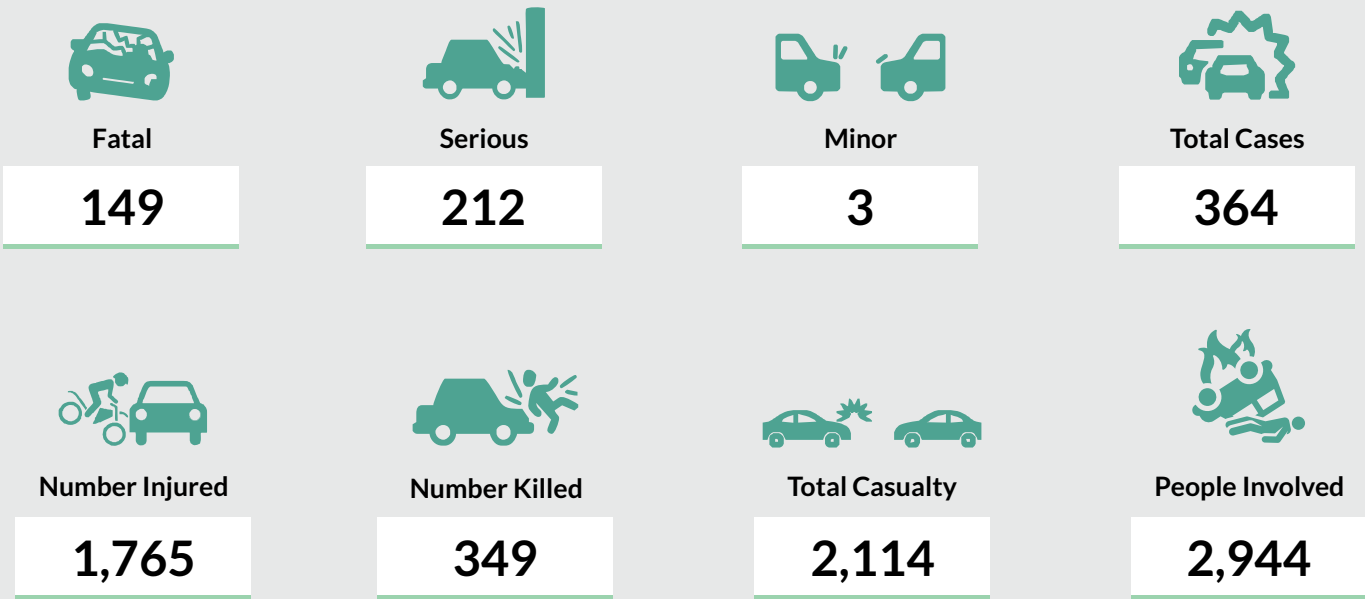
1



TOTAL

563

STATE ANALYSIS OF ROAD TRAFFIC CRASHES IN 2019



CAUSATIVE FACTORS OF ROAD TRAFFIC CRASHES IN YEAR 2019 BY STATE





NATIONAL DRIVER'S LICENSE PRODUCTION

TOTAL
2019
PRODUCTION



11,460

1.4%

STATE ANALYSIS OF VEHICLES INVOLVED IN RTCs IN 2019



BICYCLE

0



MOTORCYCLE

0



TRICYCLE

6



CAR

11



SUV(JEEP)

4



VAN

0



MINIBUS

10



LUXURY BUS

0



PICK-UP

0



TRUCK

2



TANKER

0



TRAILER

0



OTHERS

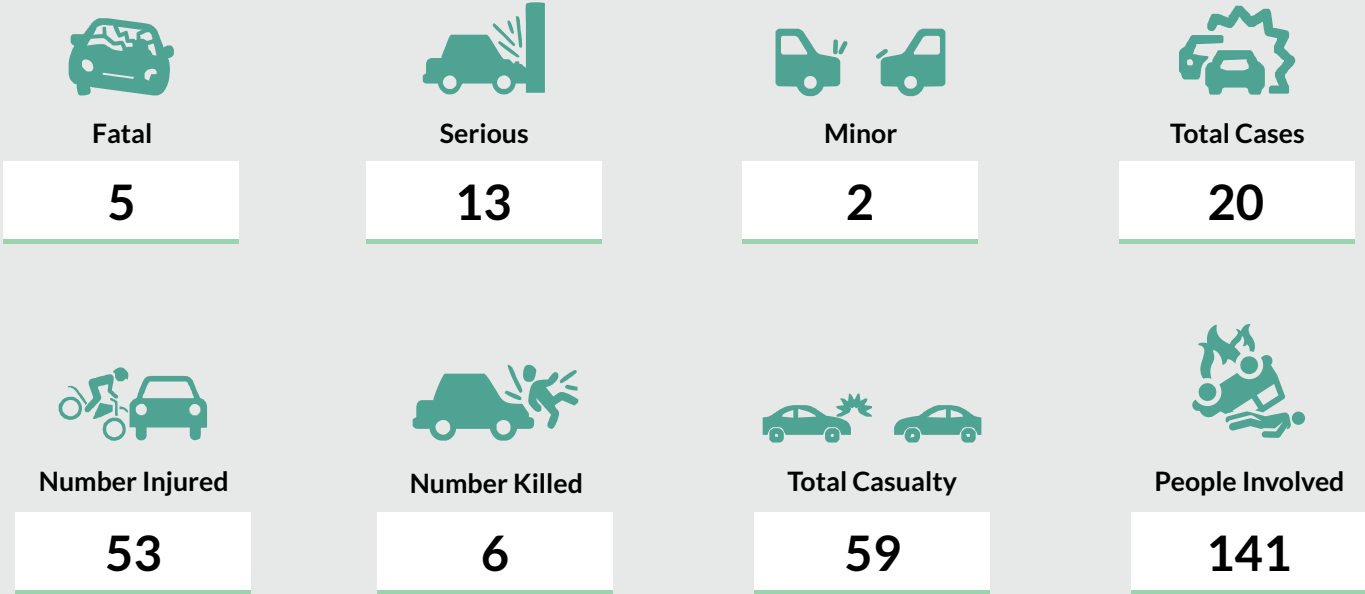
0



TOTAL

33

STATE ANALYSIS OF ROAD TRAFFIC CRASHES IN 2019



CAUSATIVE FACTORS OF ROAD TRAFFIC CRASHES IN YEAR 2019 BY STATE





NATIONAL DRIVER'S LICENSE PRODUCTION

TOTAL
2019
PRODUCTION



8,011

1.0%

STATE ANALYSIS OF VEHICLES INVOLVED IN RTCs IN 2019



BICYCLE

0



MOTORCYCLE

182



TRICYCLE

8



CAR

174



SUV(JEEP)

4



VAN

0



MINIBUS

41



LUXURY BUS

1



PICK-UP

4



TRUCK

31



TANKER

6



TRAILER

5



OTHERS

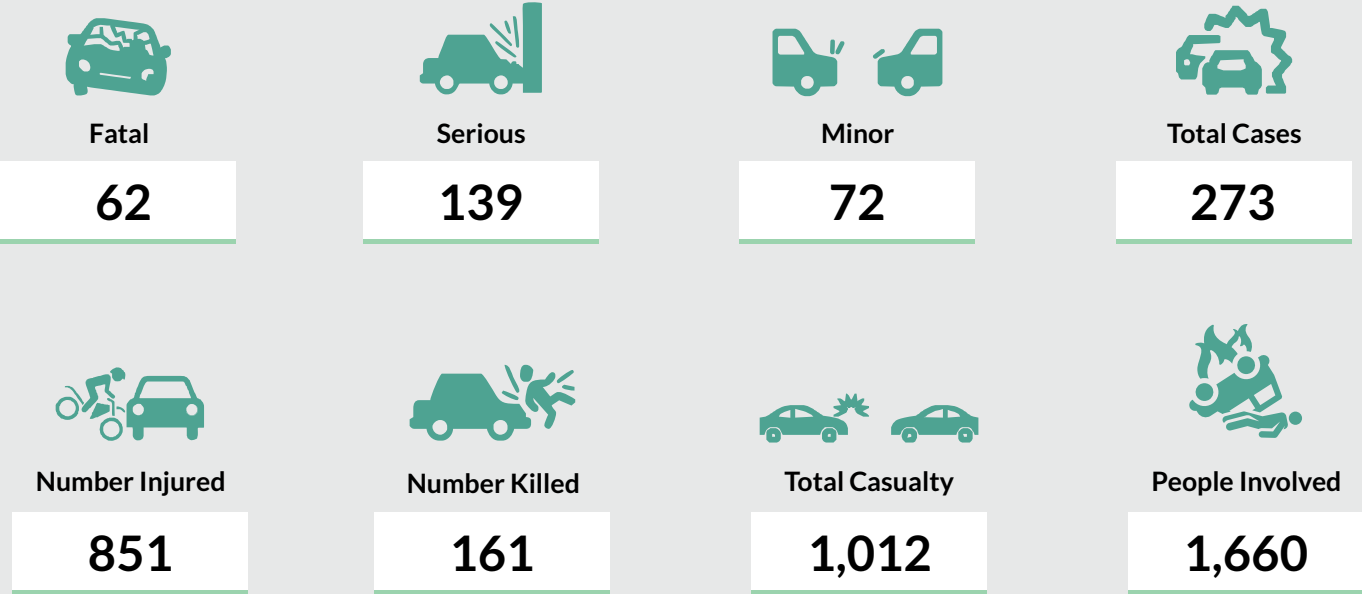
1



TOTAL

457

STATE ANALYSIS OF ROAD TRAFFIC CRASHES IN 2019



CAUSATIVE FACTORS OF ROAD TRAFFIC CRASHES IN YEAR 2019 BY STATE





NATIONAL DRIVER'S LICENSE PRODUCTION

TOTAL
2019
PRODUCTION



8,618

1.1%

STATE ANALYSIS OF VEHICLES INVOLVED IN RTCs IN 2019



BICYCLE

0



MOTORCYCLE

1



TRICYCLE

48



CAR

38



SUV(JEEP)

1



VAN

0



MINIBUS

10



LUXURY BUS

0



PICK-UP

2



TRUCK

7



TANKER

0



TRAILER

0



OTHERS

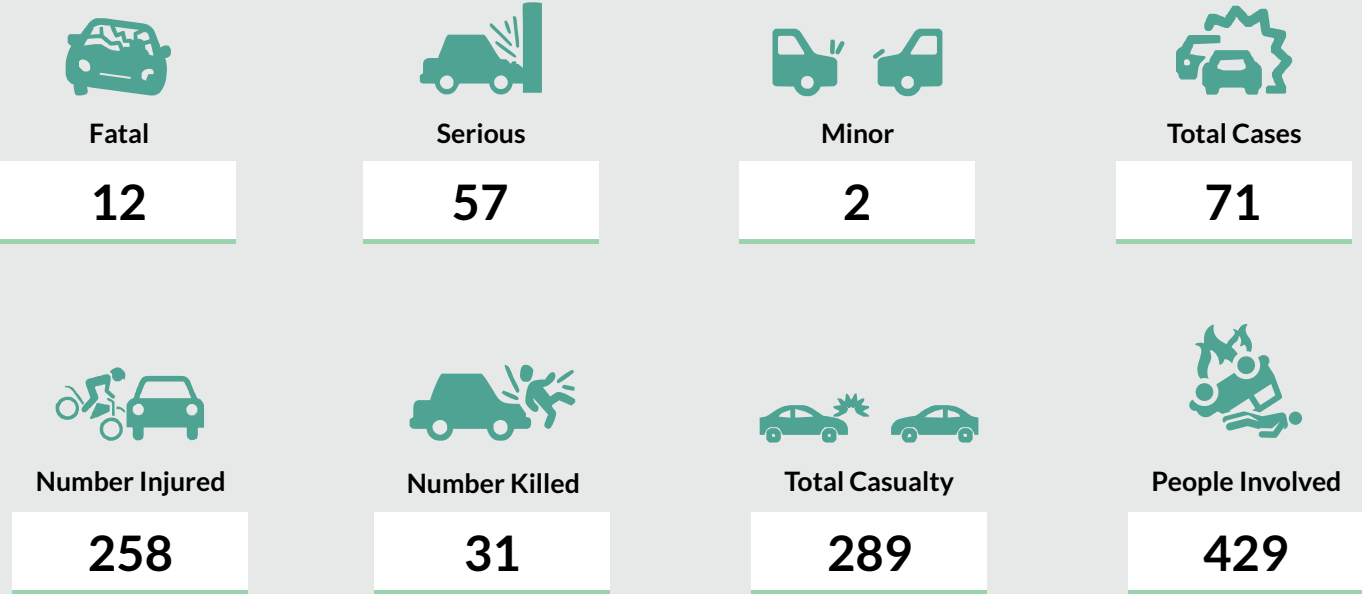
2



TOTAL

109

STATE ANALYSIS OF ROAD TRAFFIC CRASHES IN 2019



CAUSATIVE FACTORS OF ROAD TRAFFIC CRASHES IN YEAR 2019 BY STATE





NATIONAL DRIVER'S LICENSE PRODUCTION

TOTAL
2019
PRODUCTION



7,847

1.0%

STATE ANALYSIS OF VEHICLES INVOLVED IN RTCs IN 2019



BICYCLE

0



MOTORCYCLE

31



TRICYCLE

2



CAR

70



SUV(JEEP)

7



VAN

0



MINIBUS

8



LUXURY BUS

0



PICK-UP

2



TRUCK

21



TANKER

10



TRAILER

2



OTHERS

0



TOTAL

153



Fatal

33



Serious

55



Minor

15



Total Cases

103



Number Injured

233



Number Killed

64



Total Casualty

297



People Involved

528

CAUSATIVE FACTORS OF ROAD TRAFFIC CRASHES IN YEAR 2019 BY STATE





NATIONAL DRIVER'S LICENSE PRODUCTION

TOTAL
2019
PRODUCTION



43,535

5.5%

STATE ANALYSIS OF VEHICLES INVOLVED IN RTCs IN 2019



BICYCLE

0



MOTORCYCLE

39



TRICYCLE

8



CAR

86



SUV(JEEP)

16



VAN

4



MINIBUS

66



LUXURY BUS

1



PICK-UP

5



TRUCK

81



TANKER

9



TRAILER

12



OTHERS

6



TOTAL

333

STATE ANALYSIS OF ROAD TRAFFIC CRASHES IN 2019



Fatal

63



Serious

108



Minor

31



Total Cases

202



Number Injured

541



Number Killed

94



Total Casualty

635



People Involved

1,488

CAUSATIVE FACTORS OF ROAD TRAFFIC CRASHES IN YEAR 2019 BY STATE





NATIONAL DRIVER'S LICENSE PRODUCTION

TOTAL
2019
PRODUCTION



6,206

0.8%

STATE ANALYSIS OF VEHICLES INVOLVED IN RTCs IN 2019



BICYCLE

1



MOTORCYCLE

31



TRICYCLE

5



CAR

29



SUV(JEEP)

12



VAN

3



MINIBUS

47



LUXURY BUS

1



PICK-UP

2



TRUCK

36



TANKER

4



TRAILER

5



OTHERS

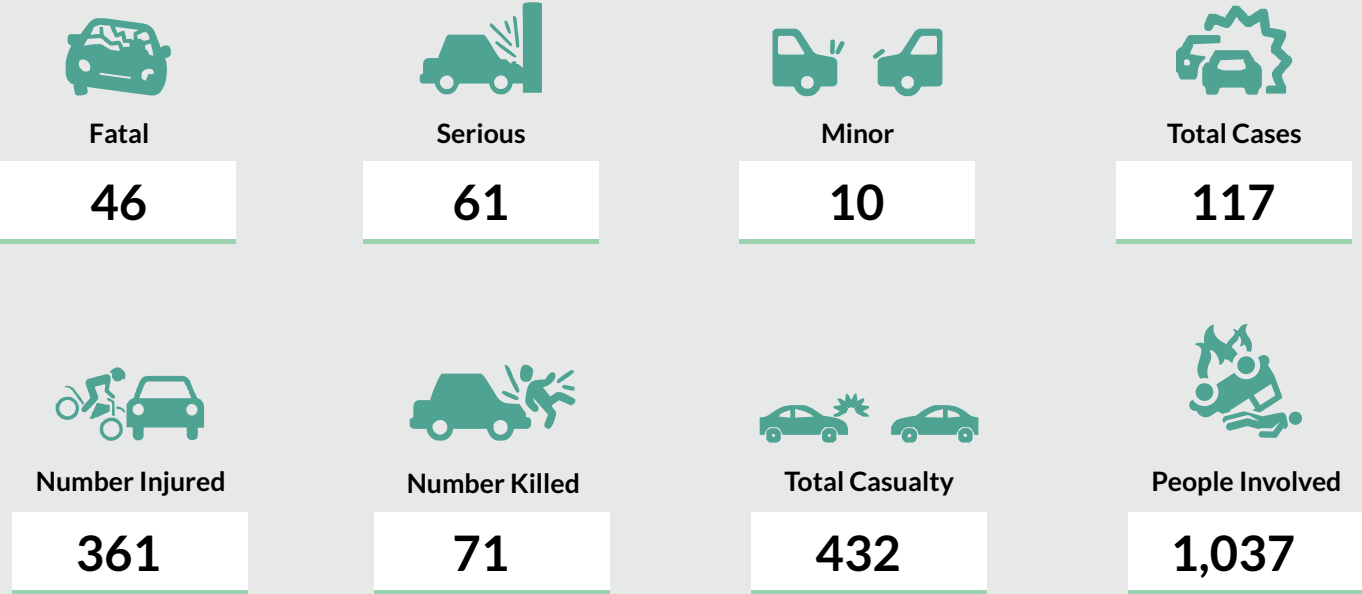
1



TOTAL

177

STATE ANALYSIS OF ROAD TRAFFIC CRASHES IN 2019



CAUSATIVE FACTORS OF ROAD TRAFFIC CRASHES IN YEAR 2019 BY STATE





NATIONAL DRIVER'S LICENSE PRODUCTION

TOTAL
2019
PRODUCTION



35,875

4.5%

STATE ANALYSIS OF VEHICLES INVOLVED IN RTCs IN 2019



BICYCLE

0



MOTORCYCLE

13



TRICYCLE

2



CAR

103



SUV(JEEP)

17



VAN

5



MINIBUS

104



LUXURY BUS

2



PICK-UP

2



TRUCK

128



TANKER

31



TRAILER

33



OTHERS

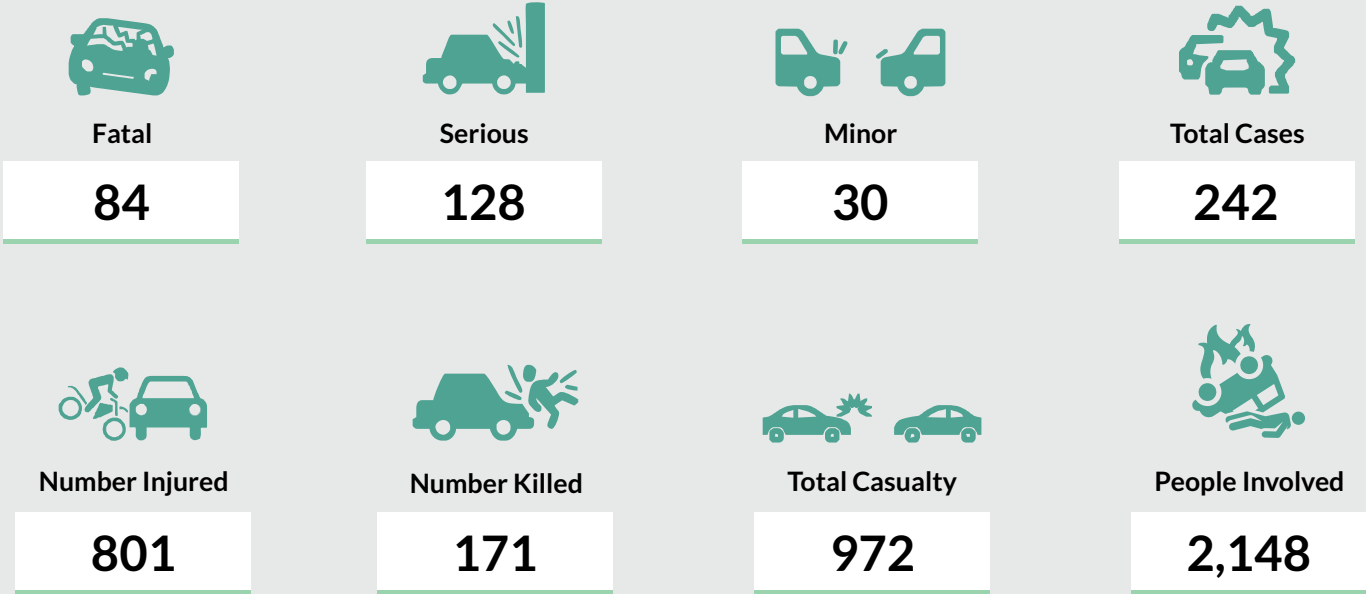
9



TOTAL

449

STATE ANALYSIS OF ROAD TRAFFIC CRASHES IN 2019



CAUSATIVE FACTORS OF ROAD TRAFFIC CRASHES IN YEAR 2019 BY STATE





NATIONAL DRIVER'S LICENSE PRODUCTION

TOTAL
2019
PRODUCTION



7,682

1.0%

STATE ANALYSIS OF VEHICLES INVOLVED IN RTCs IN 2019



BICYCLE

0



MOTORCYCLE

22



TRICYCLE

0



CAR

66



SUV(JEEP)

1



VAN

0



MINIBUS

30



LUXURY BUS

1



PICK-UP

24



TRUCK

11



TANKER

4



TRAILER

4



OTHERS

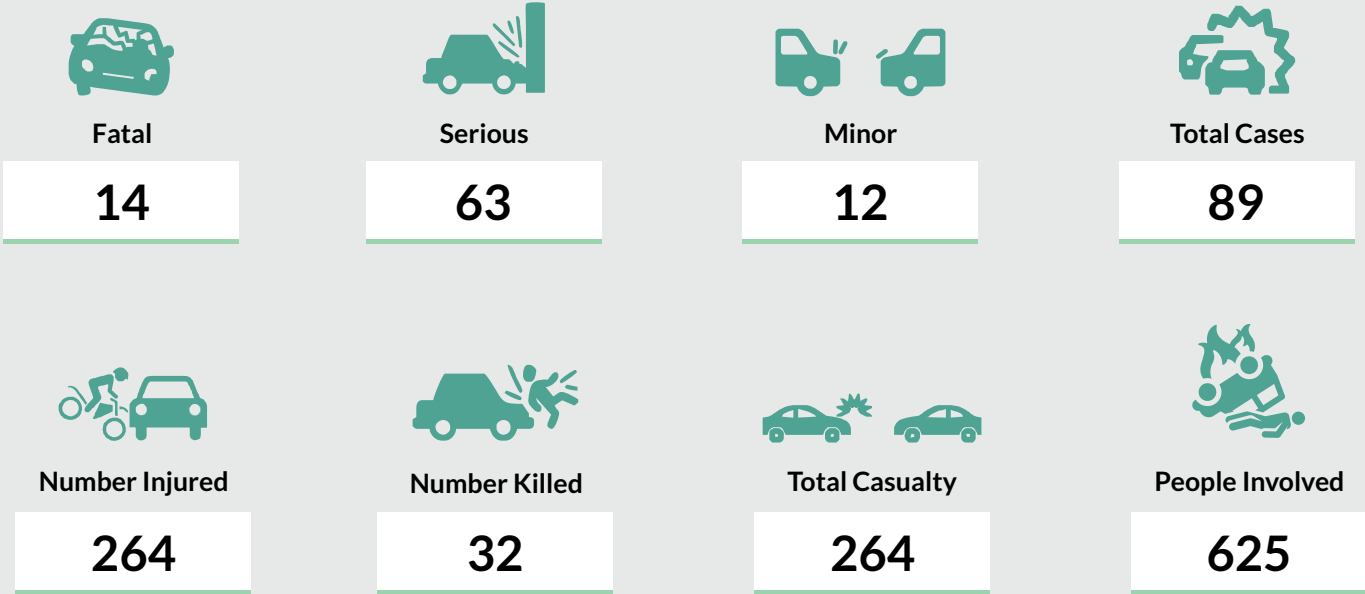
0



TOTAL

143

STATE ANALYSIS OF ROAD TRAFFIC CRASHES IN 2019



CAUSATIVE FACTORS OF ROAD TRAFFIC CRASHES IN YEAR 2019 BY STATE





NATIONAL DRIVER'S LICENSE PRODUCTION

TOTAL
2019
PRODUCTION



25,606

3.2%

STATE ANALYSIS OF VEHICLES INVOLVED IN RTCs IN 2019



BICYCLE

0



MOTORCYCLE

27



TRICYCLE

7



CAR

71



SUV(JEEP)

22



VAN

1



MINIBUS

90



LUXURY BUS

3



PICK-UP

4



TRUCK

40



TANKER

5



TRAILER

5



OTHERS

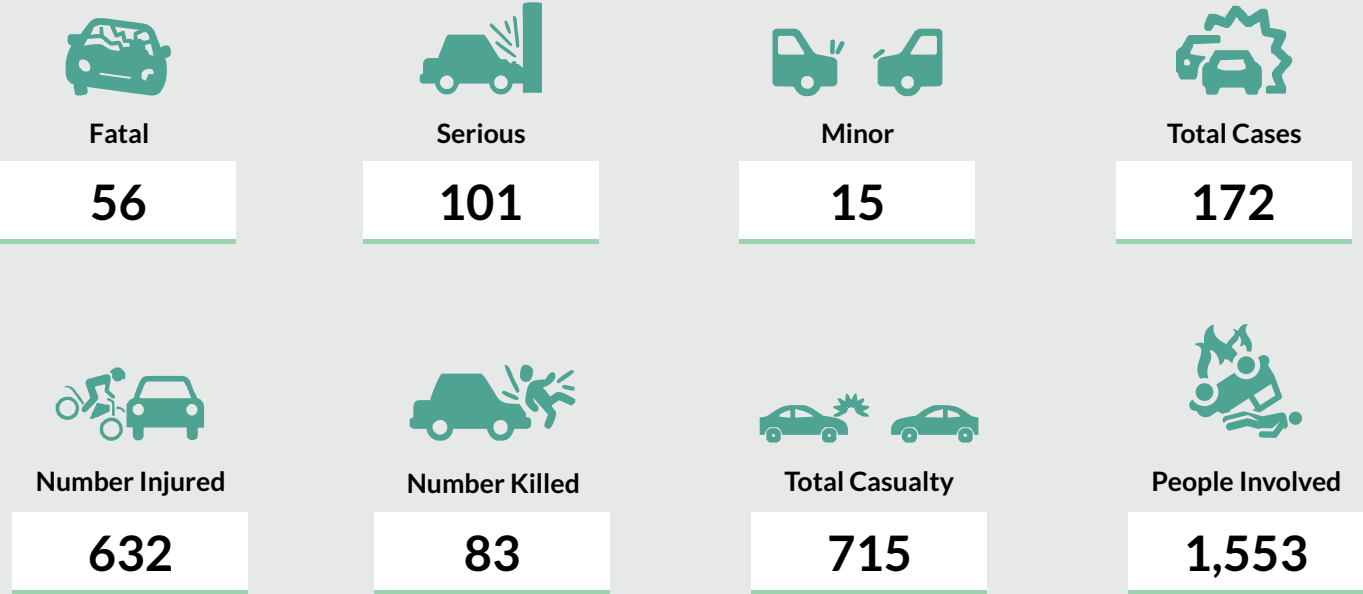
0



TOTAL

275

STATE ANALYSIS OF ROAD TRAFFIC CRASHES IN 2019



CAUSATIVE FACTORS OF ROAD TRAFFIC CRASHES IN YEAR 2019 BY STATE





NATIONAL DRIVER'S LICENSE PRODUCTION

TOTAL
2019
PRODUCTION



6,380

0.8%

STATE ANALYSIS OF VEHICLES INVOLVED IN RTCs IN 2019



BICYCLE

0



MOTORCYCLE

269



TRICYCLE

24



CAR

127



SUV(JEEP)

3



VAN

0



MINIBUS

48



LUXURY BUS

2



PICK-UP

32



TRUCK

29



TANKER

12



TRAILER

19



OTHERS

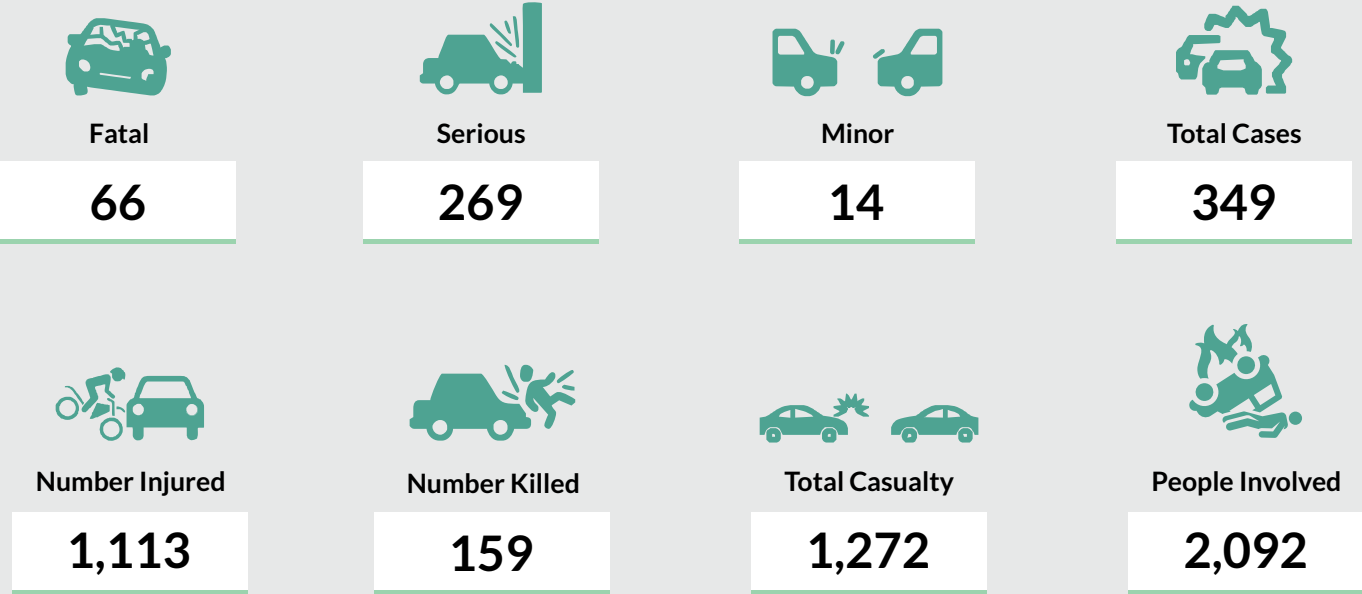
0



TOTAL

565

STATE ANALYSIS OF ROAD TRAFFIC CRASHES IN 2019



CAUSATIVE FACTORS OF ROAD TRAFFIC CRASHES IN YEAR 2019 BY STATE





NATIONAL DRIVER'S LICENSE PRODUCTION

TOTAL
2019
PRODUCTION



9,733

1.2%

STATE ANALYSIS OF VEHICLES INVOLVED IN RTCs IN 2019



BICYCLE

0



MOTORCYCLE

28



TRICYCLE

7



CAR

55



SUV(JEEP)

27



VAN

1



MINIBUS

81



LUXURY BUS

2



PICK-UP

4



TRUCK

37



TANKER

0



TRAILER

14



OTHERS

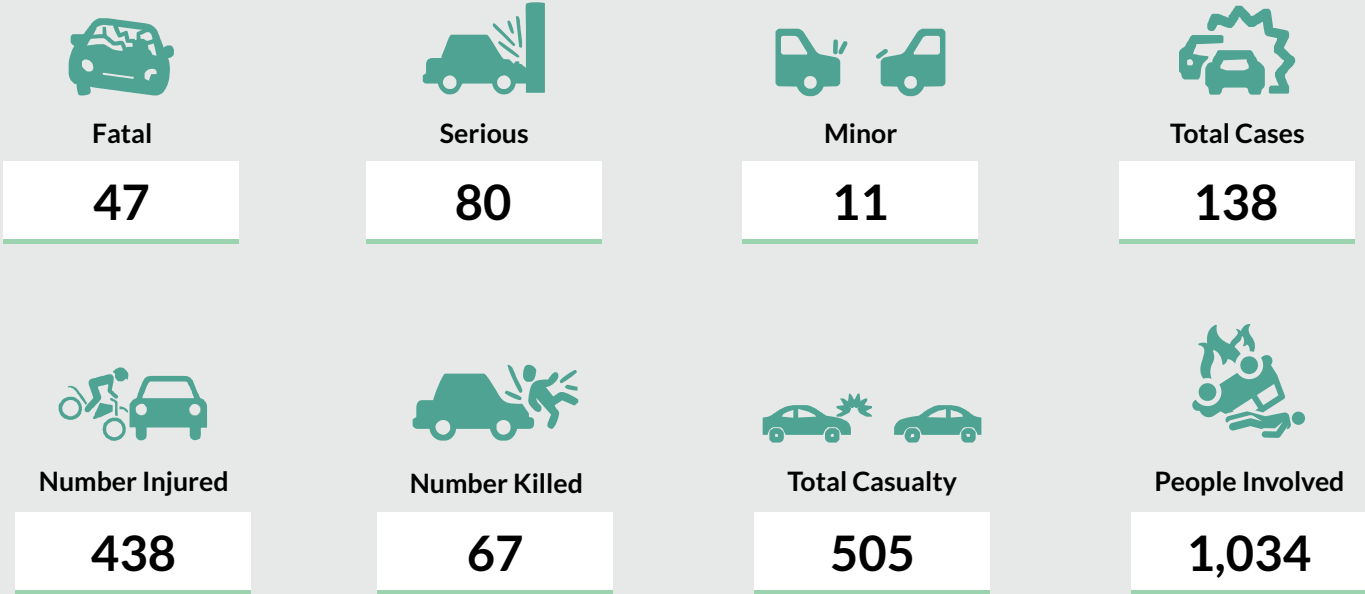
0



TOTAL

256

STATE ANALYSIS OF ROAD TRAFFIC CRASHES IN 2019



CAUSATIVE FACTORS OF ROAD TRAFFIC CRASHES IN YEAR 2019 BY STATE





NATIONAL DRIVER'S LICENSE PRODUCTION

TOTAL
2019
PRODUCTION



2,691

0.3%

STATE ANALYSIS OF VEHICLES INVOLVED IN RTCs IN 2019



BICYCLE

6



MOTORCYCLE

136



TRICYCLE

2



CAR

152



SUV(JEEP)

1



VAN

0



MINIBUS

58



LUXURY BUS

0



PICK-UP

11



TRUCK

11



TANKER

1



TRAILER

9



OTHERS

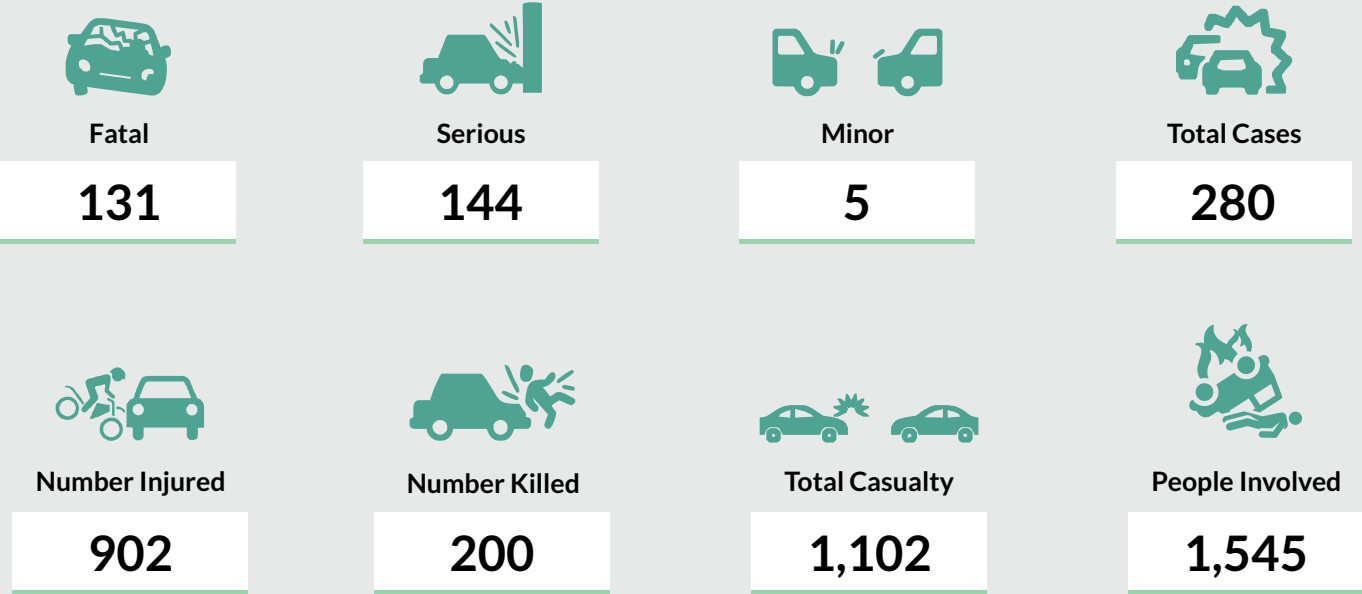
1



TOTAL

388

STATE ANALYSIS OF ROAD TRAFFIC CRASHES IN 2019



CAUSATIVE FACTORS OF ROAD TRAFFIC CRASHES IN YEAR 2019 BY STATE





NATIONAL DRIVER'S LICENSE PRODUCTION

TOTAL
2019
PRODUCTION



33,550

4.2%

STATE ANALYSIS OF VEHICLES INVOLVED IN RTCs IN 2019



BICYCLE

0



MOTORCYCLE

220



TRICYCLE

19



CAR

475



SUV(JEEP)

8



VAN

11



MINIBUS

297



LUXURY BUS

5



PICK-UP

34



TRUCK

148



TANKER

26



TRAILER

58



OTHERS

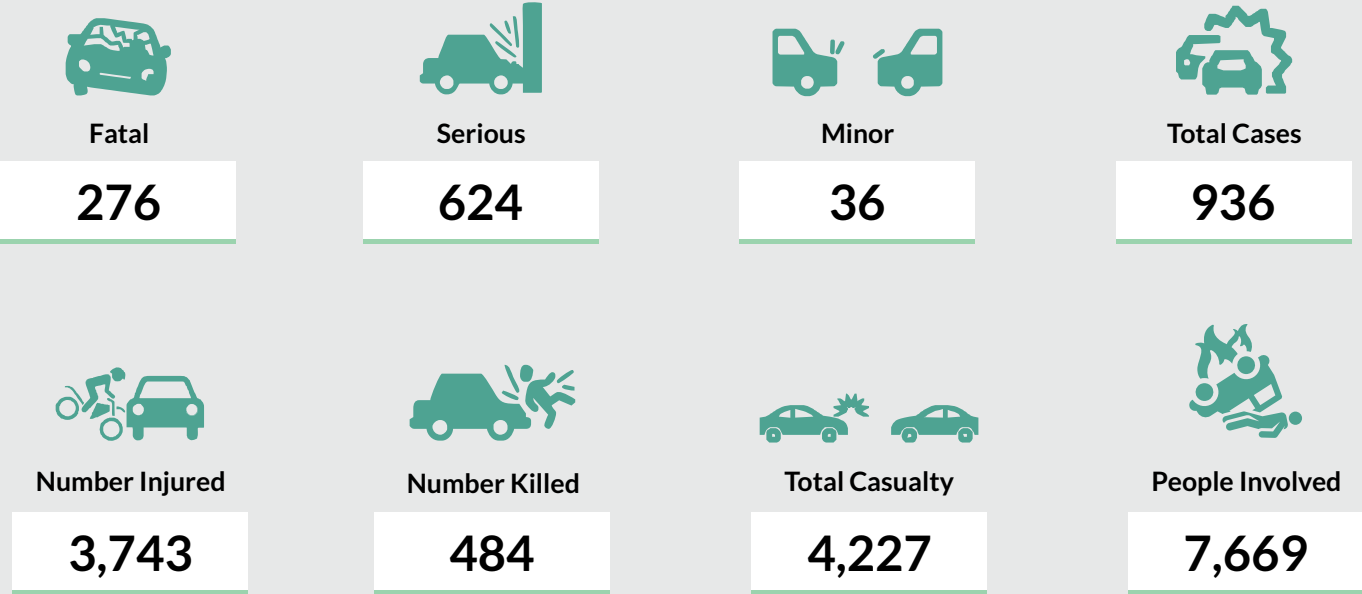
7



TOTAL

1,308

STATE ANALYSIS OF ROAD TRAFFIC CRASHES IN 2019



CAUSATIVE FACTORS OF ROAD TRAFFIC CRASHES IN YEAR 2019 BY STATE





NATIONAL DRIVER'S LICENSE PRODUCTION

TOTAL
2019
PRODUCTION



23,929

3.0%

STATE ANALYSIS OF VEHICLES INVOLVED IN RTCs IN 2019



BICYCLE

6



MOTORCYCLE

123



TRICYCLE

61



CAR

197



SUV(JEEP)

3



VAN

0



MINIBUS

96



LUXURY BUS

2



PICK-UP

11



TRUCK

36



TANKER

10



TRAILER

34



OTHERS

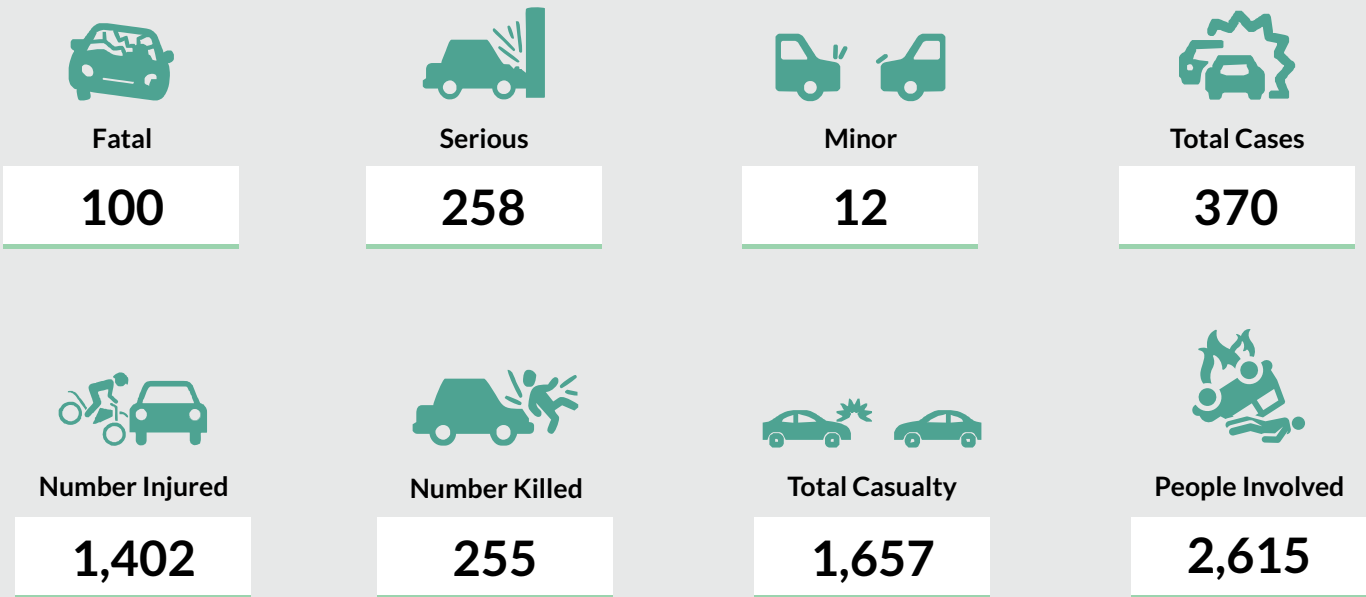
6



TOTAL

585

STATE ANALYSIS OF ROAD TRAFFIC CRASHES IN 2019



CAUSATIVE FACTORS OF ROAD TRAFFIC CRASHES IN YEAR 2019 BY STATE





NATIONAL DRIVER'S LICENSE PRODUCTION

TOTAL
2019
PRODUCTION



6,430

0.8%

STATE ANALYSIS OF VEHICLES INVOLVED IN RTCs IN 2019



BICYCLE

1



MOTORCYCLE

232



TRICYCLE

35



CAR

150



SUV(JEEP)

5



VAN

1



MINIBUS

20



LUXURY BUS

0



PICK-UP

21



TRUCK

20



TANKER

2



TRAILER

7



OTHERS

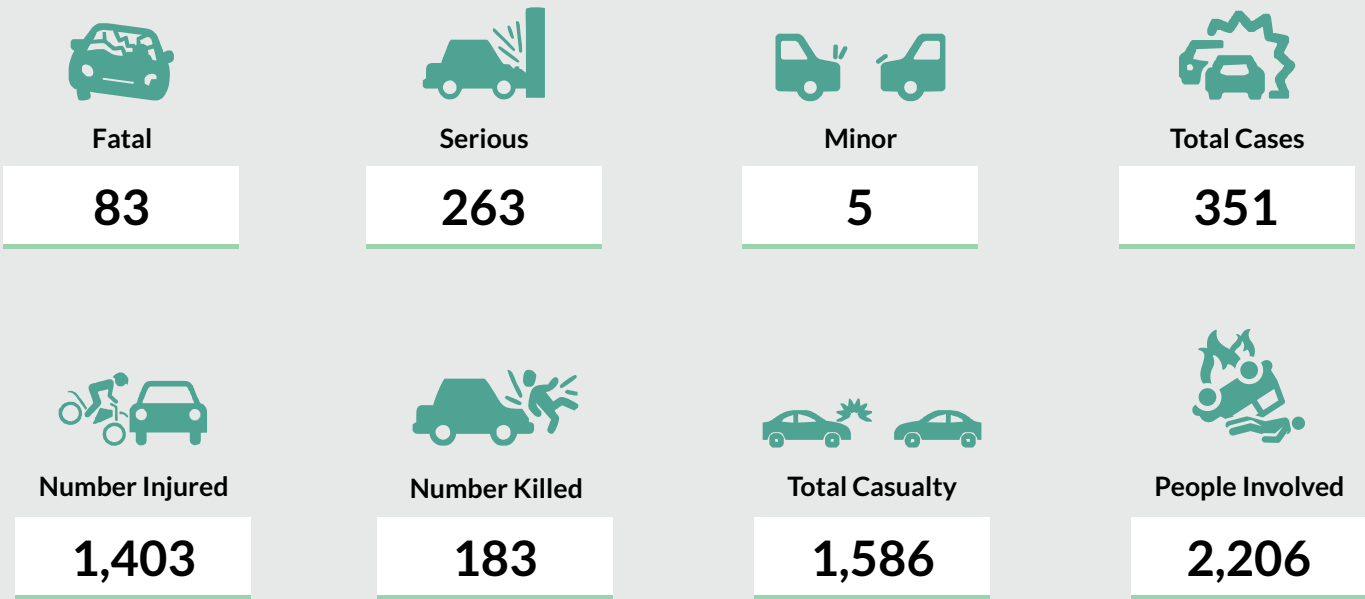
6



TOTAL

500

STATE ANALYSIS OF ROAD TRAFFIC CRASHES IN 2019



CAUSATIVE FACTORS OF ROAD TRAFFIC CRASHES IN YEAR 2019 BY STATE





NATIONAL DRIVER'S LICENSE PRODUCTION

TOTAL
2019
PRODUCTION



1,894

0.2%

STATE ANALYSIS OF VEHICLES INVOLVED IN RTCs IN 2019



BICYCLE

2



MOTORCYCLE

188



TRICYCLE

11



CAR

111



SUV(JEEP)

0



VAN

1



MINIBUS

2



LUXURY BUS

0



PICK-UP

9



TRUCK

23



TANKER

3



TRAILER

6



OTHERS

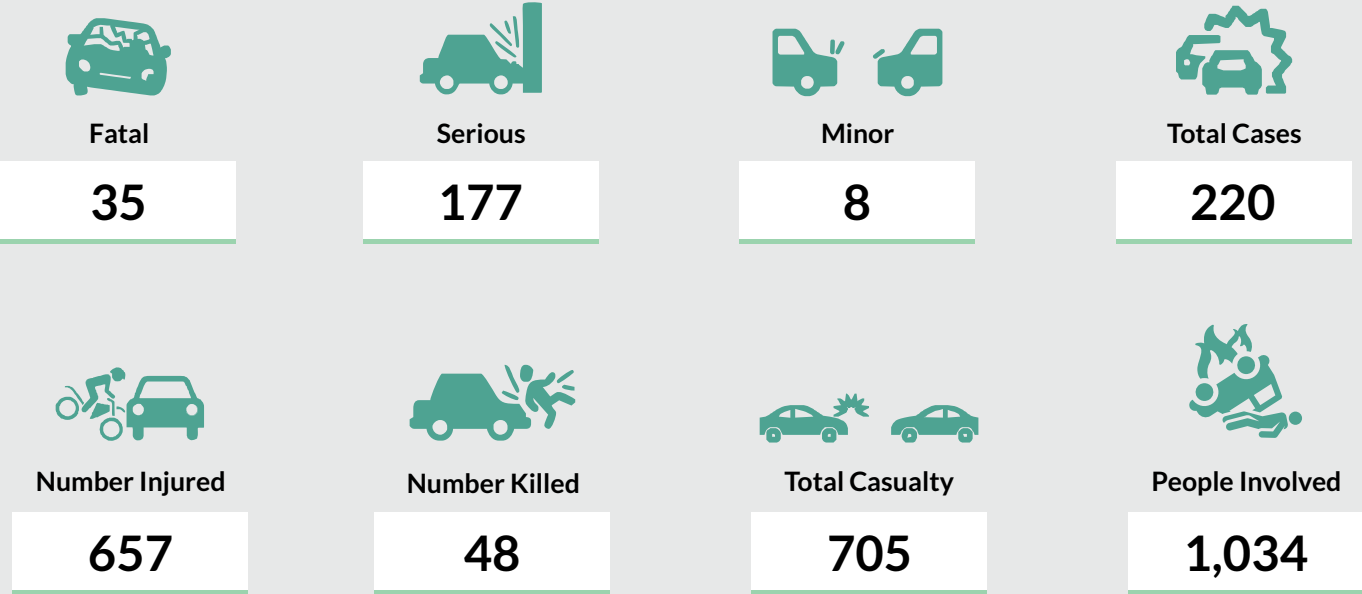
1



TOTAL

357

STATE ANALYSIS OF ROAD TRAFFIC CRASHES IN 2019



CAUSATIVE FACTORS OF ROAD TRAFFIC CRASHES IN YEAR 2019 BY STATE





NATIONAL DRIVER'S LICENSE PRODUCTION

TOTAL
2019
PRODUCTION



6,898

0.9%

STATE ANALYSIS OF VEHICLES INVOLVED IN RTCs IN 2019



BICYCLE

5



MOTORCYCLE

53



TRICYCLE

17



CAR

145



SUV(JEEP)

8



VAN

0



MINIBUS

161



LUXURY BUS

0



PICK-UP

19



TRUCK

69



TANKER

26



TRAILER

56



OTHERS

4



TOTAL

563

STATE ANALYSIS OF ROAD TRAFFIC CRASHES IN 2019



Fatal

94



Serious

221



Minor

42



Total Cases

357



Number Injured

1,235



Number Killed

193



Total Casualty

1,428



People Involved

3,519

CAUSATIVE FACTORS OF ROAD TRAFFIC CRASHES IN YEAR 2019 BY STATE





NATIONAL DRIVER'S LICENSE PRODUCTION

TOTAL
2019
PRODUCTION



11,447

1.4%

STATE ANALYSIS OF VEHICLES INVOLVED IN RTCs IN 2019



BICYCLE

0



MOTORCYCLE

51



TRICYCLE

4



CAR

103



SUV(JEEP)

5



VAN

0



MINIBUS

112



LUXURY BUS

0



PICK-UP

21



TRUCK

47



TANKER

21



TRAILER

68



OTHERS

3



TOTAL

435



Fatal

91



Serious

183



Minor

20



Total Cases

294



Number Injured

1,150



Number Killed

197



Total Casualty

1,347



People Involved

2,323

CAUSATIVE FACTORS OF ROAD TRAFFIC CRASHES IN YEAR 2019 BY STATE





NATIONAL DRIVER'S LICENSE PRODUCTION

TOTAL
2019
PRODUCTION



178,427

22.5%

STATE ANALYSIS OF VEHICLES INVOLVED IN RTCs IN 2019



BICYCLE

0



MOTORCYCLE

122



TRICYCLE

18



CAR

196



SUV(JEEP)

60



VAN

0



MINIBUS

192



LUXURY BUS

6



PICK-UP

17



TRUCK

231



TANKER

20



TRAILER

50



OTHERS

6



TOTAL

918



Fatal

90



Serious

282



Minor

170



Total Cases

542



Number Injured

914



Number Killed

117



Total Casualty

1,031



People Involved

3,895

CAUSATIVE FACTORS OF ROAD TRAFFIC CRASHES IN YEAR 2019 BY STATE





NATIONAL DRIVER'S LICENSE PRODUCTION

TOTAL
2019
PRODUCTION



10,577

1.3%

STATE ANALYSIS OF VEHICLES INVOLVED IN RTCs IN 2019



BICYCLE

0



MOTORCYCLE

307



TRICYCLE

7



CAR

255



SUV(JEEP)

11



VAN

0



MINIBUS

136



LUXURY BUS

0



PICK-UP

13



TRUCK

60



TANKER

3



TRAILER

1



OTHERS

2



TOTAL

795



Fatal

106



Serious

265



Minor

134



Total Cases

505



Number Injured

1,563



Number Killed

208



Total Casualty

1,771



People Involved

2,854

CAUSATIVE FACTORS OF ROAD TRAFFIC CRASHES IN YEAR 2019 BY STATE





NATIONAL DRIVER'S LICENSE PRODUCTION

TOTAL
2019
PRODUCTION



8,496

1.1%

STATE ANALYSIS OF VEHICLES INVOLVED IN RTCs IN 2019



BICYCLE

0



MOTORCYCLE

252



TRICYCLE

25



CAR

204



SUV (JEEP)

8



VAN

0



MINIBUS

108



LUXURY BUS

0



PICK-UP

17



TRUCK

84



TANKER

17



TRAILER

47



OTHERS

2



TOTAL

764

STATE ANALYSIS OF ROAD TRAFFIC CRASHES IN 2019



Fatal

129



Serious

348



Minor

11



Total Cases

488



Number Injured

1,768



Number Killed

303



Total Casualty

2,071



People Involved

3,325

CAUSATIVE FACTORS OF ROAD TRAFFIC CRASHES IN YEAR 2019 BY STATE





NATIONAL DRIVER'S LICENSE PRODUCTION

TOTAL
2019
PRODUCTION



46,911

5.9%

STATE ANALYSIS OF VEHICLES INVOLVED IN RTCs IN 2019



BICYCLE

0



MOTORCYCLE

107



TRICYCLE

6



CAR

240



SUV(JEEP)

77



VAN

0



MINIBUS

379



LUXURY BUS

1



PICK-UP

32



TRUCK

356



TANKER

41



TRAILER

37



OTHERS

2



TOTAL

1278



Fatal

202



Serious

410



Minor

124



Total Cases

736



Number Injured

2,205



Number Killed

364



Total Casualty

2,569



People Involved

6,041

CAUSATIVE FACTORS OF ROAD TRAFFIC CRASHES IN YEAR 2019 BY STATE





NATIONAL DRIVER'S LICENSE PRODUCTION

TOTAL
2019
PRODUCTION



13,757

1.7%

STATE ANALYSIS OF VEHICLES INVOLVED IN RTCs IN 2019



BICYCLE

0



MOTORCYCLE

126



TRICYCLE

4



CAR

139



SUV(JEEP)

31



VAN

0



MINIBUS

172



LUXURY BUS

1



PICK-UP

19



TRUCK

82



TANKER

19



TRAILER

37



OTHERS

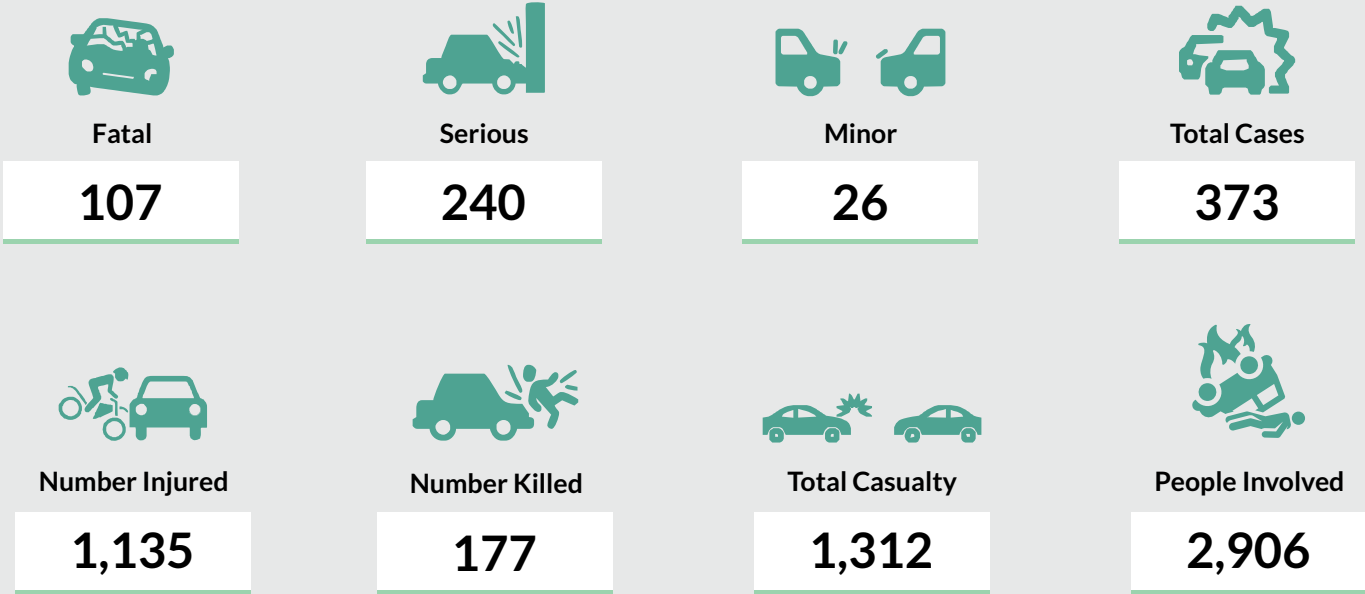
0



TOTAL

630

STATE ANALYSIS OF ROAD TRAFFIC CRASHES IN 2019



CAUSATIVE FACTORS OF ROAD TRAFFIC CRASHES IN YEAR 2019 BY STATE





NATIONAL DRIVER'S LICENSE PRODUCTION

TOTAL
2019
PRODUCTION



13,404

1.7%

STATE ANALYSIS OF VEHICLES INVOLVED IN RTCs IN 2019



BICYCLE

2



MOTORCYCLE

53



TRICYCLE

1



CAR

172



SUV(JEEP)

14



VAN

0



MINIBUS

130



LUXURY BUS

0



PICK-UP

13



TRUCK

46



TANKER

6



TRAILER

26



OTHERS

1



TOTAL

364

STATE ANALYSIS OF ROAD TRAFFIC CRASHES IN 2019



Fatal

82



Serious

143



Minor

2



Total Cases

227



Number Injured

1,004



Number Killed

153



Total Casualty

1,157



People Involved

2,265

CAUSATIVE FACTORS OF ROAD TRAFFIC CRASHES IN YEAR 2019 BY STATE





NATIONAL DRIVER'S LICENSE PRODUCTION

TOTAL
2019
PRODUCTION



47,514

6.0%

STATE ANALYSIS OF VEHICLES INVOLVED IN RTCs IN 2019



BICYCLE

0



MOTORCYCLE

139



TRICYCLE

7



CAR

169



SUV(JEEP)

31



VAN

1



MINIBUS

204



LUXURY BUS

0



PICK-UP

30



TRUCK

134



TANKER

30



TRAILER

55



OTHERS

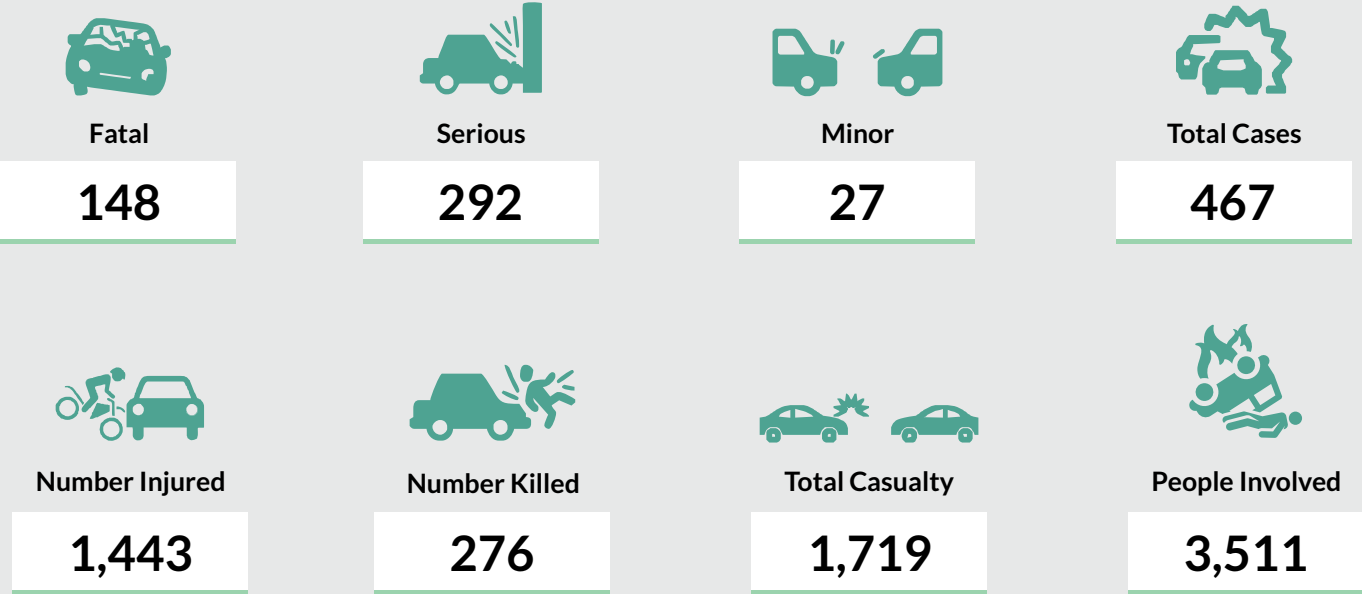
3



TOTAL

803

STATE ANALYSIS OF ROAD TRAFFIC CRASHES IN 2019



CAUSATIVE FACTORS OF ROAD TRAFFIC CRASHES IN YEAR 2019 BY STATE





NATIONAL DRIVER'S LICENSE PRODUCTION

TOTAL
2019
PRODUCTION



15,641

2.0%

STATE ANALYSIS OF VEHICLES INVOLVED IN RTCs IN 2019



BICYCLE

0



MOTORCYCLE

50



TRICYCLE

29



CAR

133



SUV(JEEP)

6



VAN

0



MINIBUS

71



LUXURY BUS

0



PICK-UP

2



TRUCK

53



TANKER

0



TRAILER

7



OTHERS

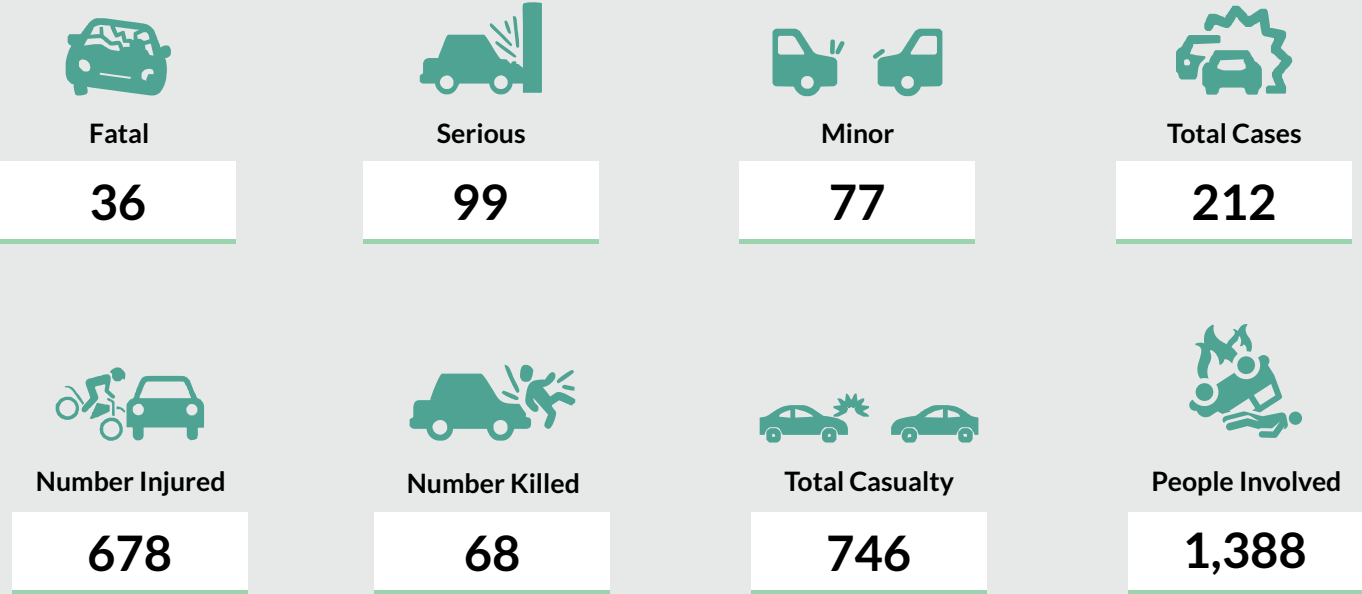
1



TOTAL

352

STATE ANALYSIS OF ROAD TRAFFIC CRASHES IN 2019



CAUSATIVE FACTORS OF ROAD TRAFFIC CRASHES IN YEAR 2019 BY STATE





NATIONAL DRIVER'S LICENSE PRODUCTION

TOTAL
2019
PRODUCTION



37,017

4.7%

STATE ANALYSIS OF VEHICLES INVOLVED IN RTCs IN 2019



BICYCLE

0



MOTORCYCLE

12



TRICYCLE

3



CAR

63



SUV(JEEP)

17



VAN

0



MINIBUS

39



LUXURY BUS

5



PICK-UP

6



TRUCK

53



TANKER

8



TRAILER

7



OTHERS

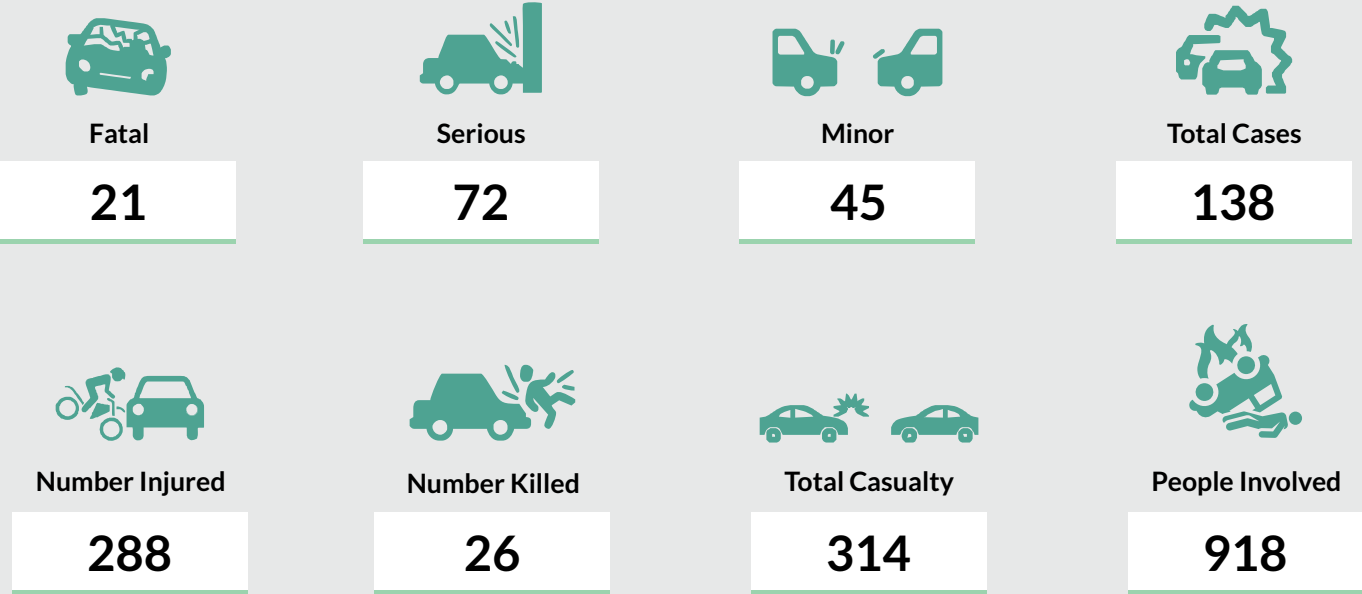
0



TOTAL

213

STATE ANALYSIS OF ROAD TRAFFIC CRASHES IN 2019



CAUSATIVE FACTORS OF ROAD TRAFFIC CRASHES IN YEAR 2019 BY STATE





NATIONAL DRIVER'S LICENSE PRODUCTION

TOTAL
2019
PRODUCTION



4,122

0.5%

STATE ANALYSIS OF VEHICLES INVOLVED IN RTCs IN 2019



BICYCLE

1



MOTORCYCLE

97



TRICYCLE

11



CAR

106



SUV(JEEP)

4



VAN

3



MINIBUS

5



LUXURY BUS

0



PICK-UP

6



TRUCK

0



TANKER

8



TRAILER

10



OTHERS

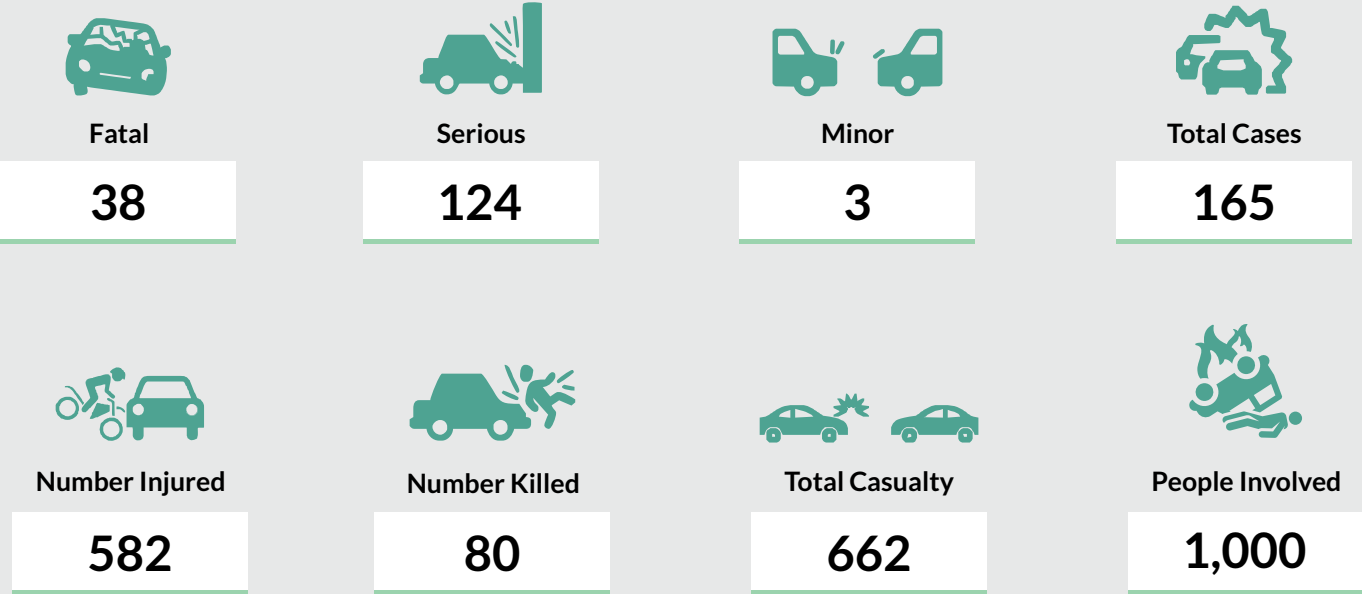
3



TOTAL

254

STATE ANALYSIS OF ROAD TRAFFIC CRASHES IN 2019



CAUSATIVE FACTORS OF ROAD TRAFFIC CRASHES IN YEAR 2019 BY STATE





NATIONAL DRIVER'S LICENSE PRODUCTION

TOTAL
2019
PRODUCTION



3,820

0.5%

STATE ANALYSIS OF VEHICLES INVOLVED IN RTCs IN 2019



BICYCLE

1



MOTORCYCLE

82



TRICYCLE

60



CAR

99



SUV(JEEP)

1



VAN

0



MINIBUS

20



LUXURY BUS

1



PICK-UP

12



TRUCK

3



TANKER

3



TRAILER

7



OTHERS

0



TOTAL

289



Fatal

33



Serious

156



Minor

1



Total Cases

190



Number Injured

535



Number Killed

55



Total Casualty

590



People Involved

964

CAUSATIVE FACTORS OF ROAD TRAFFIC CRASHES IN YEAR 2019 BY STATE





NATIONAL DRIVER'S LICENSE PRODUCTION

TOTAL
2019
PRODUCTION



4,312

0.5%

STATE ANALYSIS OF VEHICLES INVOLVED IN RTCs IN 2019



BICYCLE

1



MOTORCYCLE

1



TRICYCLE

29



CAR

102



SUV(JEEP)

4



VAN

0



MINIBUS

44



LUXURY BUS

1



PICK-UP

28



TRUCK

17



TANKER

1



TRAILER

3



OTHERS

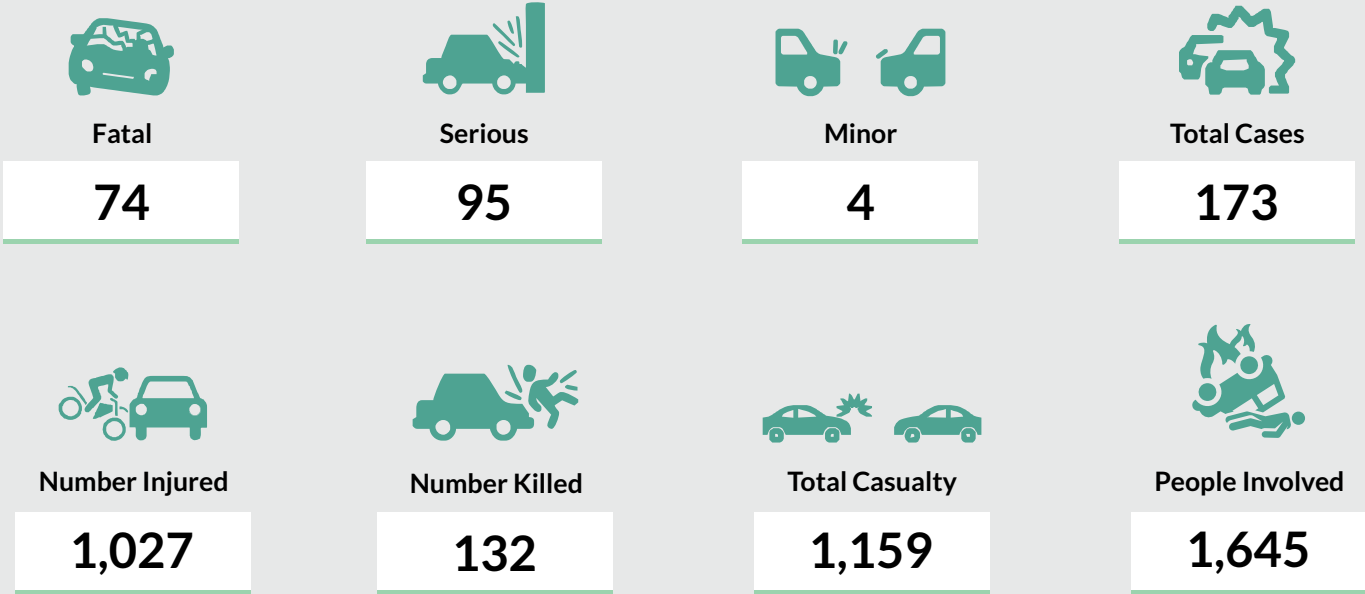
3



TOTAL

234

STATE ANALYSIS OF ROAD TRAFFIC CRASHES IN 2019



CAUSATIVE FACTORS OF ROAD TRAFFIC CRASHES IN YEAR 2019 BY STATE





NATIONAL DRIVER'S LICENSE PRODUCTION

TOTAL
2019
PRODUCTION



1,808

0.2%

STATE ANALYSIS OF VEHICLES INVOLVED IN RTCs IN 2019



BICYCLE

0



MOTORCYCLE

78



TRICYCLE

2



CAR

126



SUV(JEEP)

0



VAN

0



MINIBUS

17



LUXURY BUS

0



PICK-UP

17



TRUCK

11



TANKER

4



TRAILER

9



OTHERS

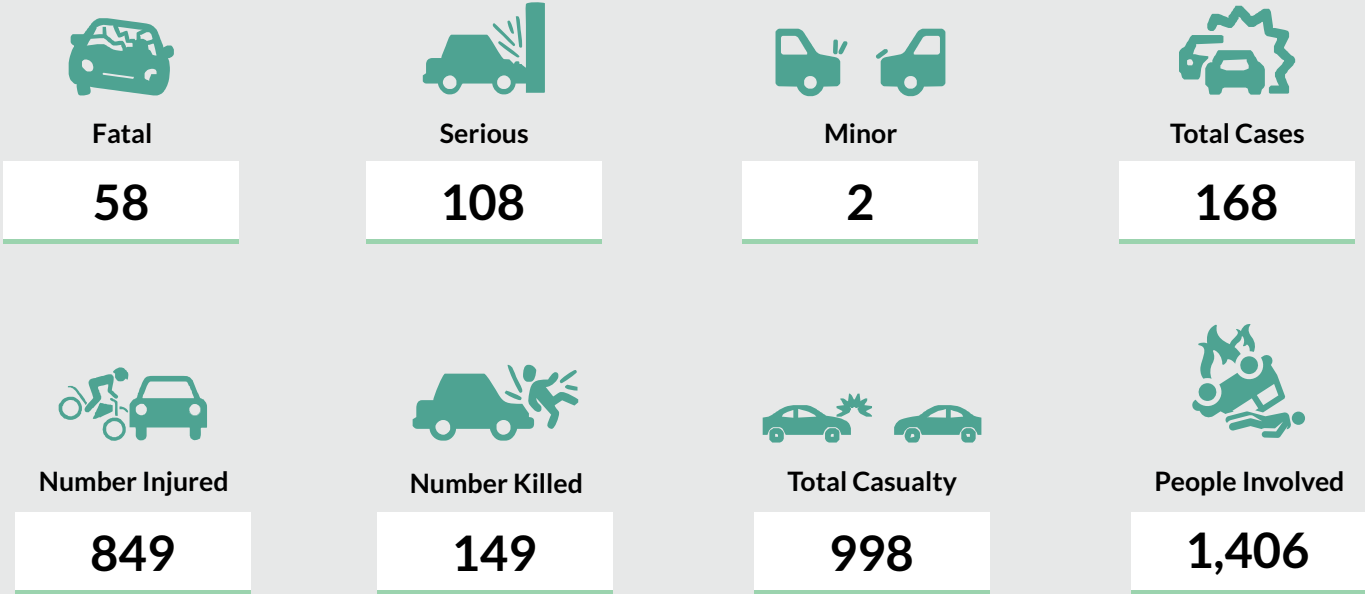
1



TOTAL

265

STATE ANALYSIS OF ROAD TRAFFIC CRASHES IN 2019



CAUSATIVE FACTORS OF ROAD TRAFFIC CRASHES IN YEAR 2019 BY STATE





NATIONAL DRIVER'S LICENSE PRODUCTION

TOTAL
2019
PRODUCTION



791,627

100.0%

STATE ANALYSIS OF VEHICLES INVOLVED IN RTCs IN 2019



BICYCLE

32



MOTORCYCLE

3,488



TRICYCLE

613



CAR

5,479



SUV(JEEP)

546



VAN

36



MINIBUS

3,389



LUXURY BUS

42



PICK-UP

498



TRUCK

2,214



TANKER

364



TRAILER

722



OTHERS

77



TOTAL

17,500



Fatal

2,896



Serious

6,911



Minor

1,265



Total Cases

11,072



Number Injured

35,981



Number Killed

5,483



Total Casualty

41,464



People Involved

79,301

CAUSATIVE FACTORS OF ROAD TRAFFIC CRASHES IN YEAR 2019 BY STATE

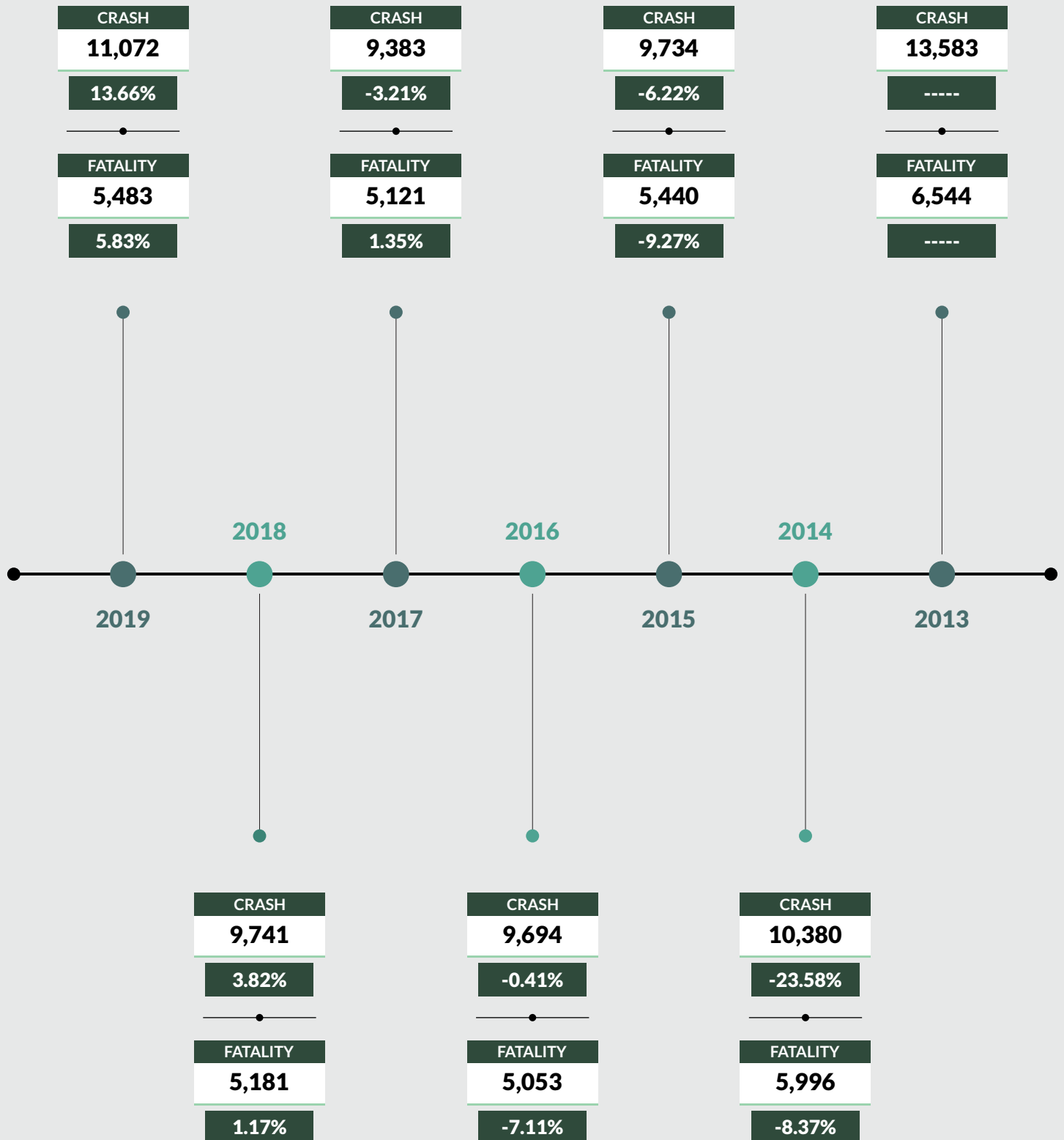


ROAD TRANSPORT DATA - FULL YEAR 2019

Percentage Change of Crashes and Fatalities (2013-2019)



Number of Crash and Fatality and their Percentage Change



ROAD TRANSPORT DATA - FULL YEAR 2019

Road Traffic Crashes on Monthly Basis



JANUARY

Fatal	Serious	Minor	Total Cases	Number Injured	Number Killed	Total Casualty	People Involved
278	553	119	950	3,383	540	3,923	7,827

FEBRUARY

Fatal	Serious	Minor	Total Cases	Number Injured	Number Killed	Total Casualty	People Involved
209	411	96	716	2,354	396	2,750	5,021

MARCH

Fatal	Serious	Minor	Total Cases	Number Injured	Number Killed	Total Casualty	People Involved
235	556	131	922	3,122	420	3,542	6,558

APRIL

Fatal	Serious	Minor	Total Cases	Number Injured	Number Killed	Total Casualty	People Involved
258	623	100	981	3,600	514	4,114	7,461

MAY









Fatal	Serious	Minor	Total Cases	Number Injured	Number Killed	Total Casualty	People Involved
247	593	87	927	2,875	472	3,347	6,282

ROAD TRANSPORT DATA - FULL YEAR 2019









Road Traffic Crashes on Monthly Basis











JUNE

							
Fatal	Serious	Minor	Total Cases	Number Injured	Number Killed	Total Casualty	People Involved
226	563	138	927	2,864	402	3,266	6,571









JULY

							
Fatal	Serious	Minor	Total Cases	Number Injured	Number Killed	Total Casualty	People Involved
203	531	92	826	2,605	433	3,038	5,701









AUGUST

							
Fatal	Serious	Minor	Total Cases	Number Injured	Number Killed	Total Casualty	People Involved
264	553	118	935	2,920	479	3,399	6,742

SEPTEMBER

							
Fatal	Serious	Minor	Total Cases	Number Injured	Number Killed	Total Casualty	People Involved
182	493	79	754	2,195	345	2,540	4,930

OCTOBER









							
Fatal	Serious	Minor	Total Cases	Number Injured	Number Killed	Total Casualty	People Involved
203	601	120	924	2,608	388	2,996	5,954

ROAD TRANSPORT DATA - FULL YEAR 2019









Road Traffic Crashes on Monthly Basis











NOVEMBER

							
Fatal	Serious	Minor	Total Cases	Number Injured	Number Killed	Total Casualty	People Involved
253	606	91	950	3,164	458	3,622	6,291

DECEMBER

							
Fatal	Serious	Minor	Total Cases	Number Injured	Number Killed	Total Casualty	People Involved
338	828	94	1,260	4,291	636	4,927	9,963

TOTAL

							
Fatal	Serious	Minor	Total Cases	Number Injured	Number Killed	Total Casualty	People Involved
2,896	6,911	1,265	11,072	35,981	5,483	41,464	79,301

ROAD TRANSPORT DATA - FULL YEAR 2019

Sex Distribution of Persons Killed In Road Traffic Crashes



MALE



FREQUENCY

4,255

FEMALE



FREQUENCY

1,228



MALE



PERCENTAGE

78%

FEMALE



PERCENTAGE

22%



Total

FREQUENCY

5,483

ROAD TRANSPORT DATA - FULL YEAR 2019

Adult/Child Distribution of Persons Killed In Road Traffic Crashes



ADULT



FREQUENCY

5,059

CHILD



FREQUENCY

424



ADULT



PERCENTAGE

92%

CHILD



PERCENTAGE

8%



Total

FREQUENCY

5,483

ROAD TRANSPORT DATA - FULL YEAR 2019

Sex Distribution of Persons Injured In Road Traffic Crashes



MALE



FREQUENCY

27,120

FEMALE



FREQUENCY

8,861



MALE



PERCENTAGE

75%

FEMALE



PERCENTAGE

25%



Total

FREQUENCY

35,981

ROAD TRANSPORT DATA - FULL YEAR 2019

Adult/Child Distribution of Persons Injured In Road Traffic Crashes



ADULT



FREQUENCY

33,831

CHILD



FREQUENCY

2,150



ADULT



PERCENTAGE

94%

CHILD



PERCENTAGE

6%



Total

FREQUENCY

35,981

ROAD TRANSPORT DATA - FULL YEAR 2019

Number of Vehicles Involved In Road Traffic Crashes



VEHICLES INVOLVED



Bicycle

32



Motorcycle

3,488



Tricycle

613



Car

5,479



Suv(jeep)

546



Van

36



Minibus

3,389



Luxury Bus

42



Pick-up

498



Truck

2,214



Tanker

364



Trailer

722



Others

77

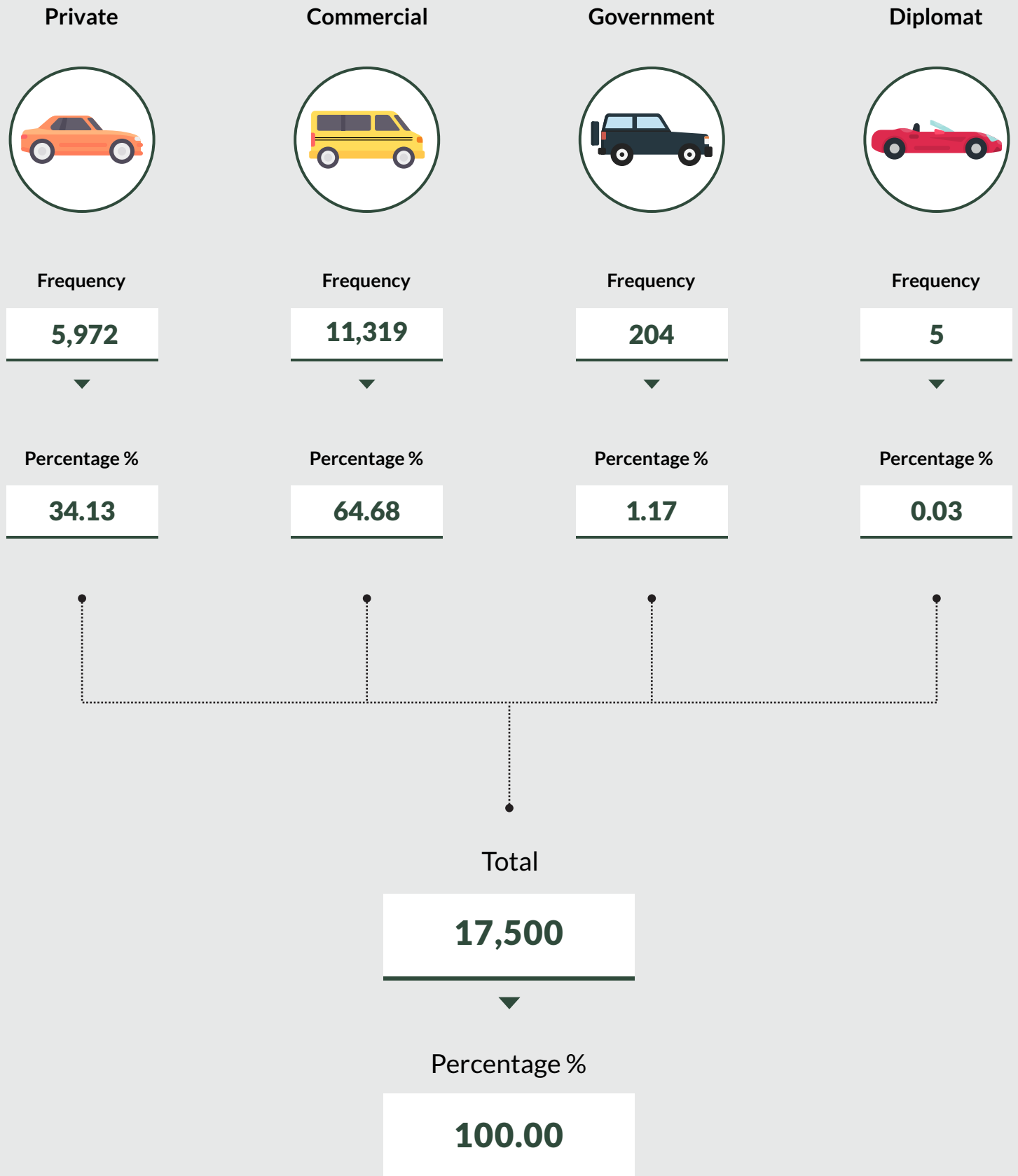


Total

17,500

ROAD TRANSPORT DATA - FULL YEAR 2019

Category of Vehicle Involved In Road Traffic Crashes



ROAD TRANSPORT DATA - FULL YEAR 2019

Number Plate Production



Motorvehicle	
Government Motor Vehicle	5,754
Government Articulated (High Capacity Vehilcles)	0
Private Motor Vehicle	258,411
Commercial Motor Vehicle	115,882
Non Government-Articulated (High Capacity Vehilcles)	15
Fancy (Customised)	908
Out of Series	276
Military/Paramillitary	1,206
Federal Government	2,888
Diplomatic	740
Complimentary Number	73
Gov fan	575
Dealer (Car Dealers)	474
Sub Total	387,202
Motorcycle	
Government Motor Vehicle	1,632
Private Motor Cycle	122,197
Commercial Motor Cycle	156,906
Military/Paramillitary Motor Cycle	87,140
Fancy (Customised)	17
Federal Government	1,262
Dealer (Car Dealers)	24
Sub Total	369,178
Reprint (National Uniform Licensing Scheme, Lagos)	
Motor Vehicle	657
Motor Cycle	304
Sub Total	961
Total Production	
Motor Vehicle	387,202
Motorcycle	369,178
Reprint	961
Grand Total	757,341

METHODOLOGY

Data is supplied administratively by the Federal Road Safety Corps (FRSC) and verified and validated by the National Bureau of Statistics, Nigeria (NBS).

APPENDIX

Percentage Change of Crashes and Fatalities (2013-2019)

Year	Number of Crash	Number of Fatality	% change in crash	% change in fatality
2013	13,583	6,544		
2014	10,380	5,996	- 23.58	- 8.37
2015	9,734	5,440	- 6.22	- 9.27
2016	9,694	5,053	- 0.41	- 7.11
2017	9,383	5,121	- 3.21	1.35
2018	9,741	5,181	3.82	1.17
2019	11,072	5,483	13.66	5.83

ROAD TRAFFIC CRASHES ON MONTHLY BASIS IN 2019

MONTH	FATAL	SERIOUS	MINOR	TOTAL CRASHES	NUMBER INJURED	NUMBER KILLED	TOTAL CASUALTY	PEOPLE INVOLVED
JANUARY	278	553	119	950	3,383	540	3,923	7,827
FEBRUARY	209	411	96	716	2,354	396	2,750	5,021
MARCH	235	556	131	922	3,122	420	3,542	6,558
APRIL	258	623	100	981	3,600	514	4,114	7,461
MAY	247	593	87	927	2,875	472	3,347	6,282
JUNE	226	563	138	927	2,864	402	3,266	6,571
JULY	203	531	92	826	2,605	433	3,038	5,701
AUGUST	264	553	118	935	2,920	479	3,399	6,742
SEPTEMBER	182	493	79	754	2,195	345	2,540	4,930
OCTOBER	203	601	120	924	2,608	388	2,996	5,954
NOVEMBER	253	606	91	950	3,164	458	3,622	6,291
DECEMBER	338	828	94	1,260	4,291	636	4,927	9,963
TOTAL	2,896	6,911	1,265	11,072	35,981	5,483	41,464	79,301

STATE ANALYSIS OF ROAD TRAFFIC CRASHES in 2019

STATE	FATAL	SERIOUS	MINOR	TOTAL CASES	NUMBER INJURED	NUMBER KILLED	TOTAL CASUALTY	PEOPLE INVOLVED
Abia	35	64	7	106	428	50	478	891
Adamawa	33	131	6	170	554	81	635	1,044
Akwa Ibom	24	50	17	91	232	36	268	581
Anambra	55	109	28	192	461	98	559	1,398
Bauchi	149	212	3	364	1,765	349	2,114	2,944
Bayelsa	5	13	2	20	53	6	59	141
Benue	62	139	72	273	851	161	1,012	1,660
Borno	12	57	2	71	258	31	289	429
Cross River	33	55	15	103	233	64	297	528
Delta	63	108	31	202	541	94	635	1,488
Ebonyi	46	61	10	117	361	71	432	1,037
Edo	84	128	30	242	801	171	972	2,148
Ekiti	14	63	12	89	264	32	296	625
Enugu	56	101	15	172	632	83	715	1,553
FCT	178	767	236	1,181	2,513	262	2,775	6,679
Gombe	66	269	14	349	1,113	159	1,272	2,092
Imo	47	80	11	138	438	67	505	1,034
Jigawa	131	144	5	280	902	200	1,102	1,545
Kaduna	276	624	36	936	3,743	484	4,227	7,669
Kano	100	258	12	370	1,402	255	1,657	2,615
Katsina	83	263	5	351	1,403	183	1,586	2,206
Kebbi	35	177	8	220	657	48	705	1,034
Kogi	94	221	42	357	1,235	193	1,428	3,519
Kwara	91	183	20	294	1,150	197	1,347	2,323
Lagos	90	282	170	542	914	117	1,031	3,895
Nasarawa	106	265	134	505	1,563	208	1,771	2,854
Niger	129	348	11	488	1,768	303	2,071	3,325
Ogun	202	410	124	736	2,205	364	2,569	6,041
Ondo	107	240	26	373	1,135	177	1,312	2,906
Osun	82	143	2	227	1,004	153	1,157	2,265
Oyo	148	292	27	467	1,443	276	1,719	3,511
Plateau	36	99	77	212	678	68	746	1,388
Rivers	21	72	45	138	288	26	314	918
Sokoto	38	124	3	165	582	80	662	1,000
Taraba	33	156	1	190	535	55	590	964
Yobe	74	95	4	173	1,027	132	1,159	1,645
Zamfara	58	108	2	168	849	149	998	1,406
TOTAL	2,896	6,911	1,265	11,072	35,981	5,483	41,464	79,301

SEX DISTRIBUTION OF PERSONS KILLED IN RTC 2019		
SEX	PERSONS KILLED	
	Frequency	Percentage
MALE	4,255	78%
FEMALE	1,228	22%
TOTAL	5,483	100%
ADULT/CHILD DISTRIBUTION OF PERSONS KILLED IN RTC 2019		
	PERSONS KILLED	
	Frequency	Percentage
ADULT	5,059	92%
CHILD	424	8%
TOTAL	5,483	100%

SEX DISTRIBUTION OF PERSONS INJURED IN RTC 2019		
SEX	PERSONS INJURED	
	Frequency	Precentage
MALE	27,120	75%
FEMALE	8,861	25%
TOTAL	35,981	100%
ADULT/CHILD DISTRIBUTION OF PERSONS INJURED IN RTC 2019		
	PERSONS INJURED	
	Frequency	Precentage
ADULT	33,831	94%
CHILD	2,150	6%
TOTAL	35,981	100%

NUMBER OF VEHICLES INVOLVED IN ROAD TRAFFIC CRASHES 2019

	BICYCLE	MOTORCYCLE	TRICYCLE	CAR	SUV(JEEP)	VAN	MINIBUS	LUXURY BUS	PICK-UP	TRUCK	TANKER	TRAILER	OTHERS	TOTAL
TOTAL	32	3,488	613	5,479	546	36	3,389	42	498	2,214	364	722	77	17,500

STATE ANALYSIS OF VEHICLES INVOLVED IN RTCs IN 2019

STATE	VEHICLE INVOLVED													TOTAL
	BICYCLE	MOTORCYCLE	TRICYCLE	CAR	SUV(JEEP)	VAN	MINIBUS	LUXURY BUS	PICK-UP	TRUCK	TANKER	TRAILER	OTHERS	
Abia	0	16	14	43	21	0	43	3	2	17	2	9	0	170
Adamawa	3	18	70	117	2	0	19	0	12	7	1	5	0	254
Akwalbom	1	26	7	38	3	0	29	1	2	29	4	0	0	140
Anambra	0	35	15	51	24	0	109	3	5	85	15	17	2	361
Bauchi	2	121	8	188	9	3	154	0	28	28	0	21	1	563
Bayelsa	0	0	6	11	4	0	10	0	0	2	0	0	0	33
Benue	0	182	8	174	4	0	41	1	4	31	6	5	1	457
Borno	0	1	48	38	1	0	10	0	2	7	0	0	2	109
Cross River	0	31	2	70	7	0	8	0	2	21	10	2	0	153
Delta	0	39	8	86	16	4	66	1	5	81	9	12	6	333
Ebonyi	1	31	5	29	12	3	47	1	2	36	4	5	1	177
Edo	0	13	2	103	17	5	104	2	2	128	31	33	9	449
Ekiti	0	22	0	66	1	0	30	1	4	11	4	4	0	143
Enugu	0	27	7	71	22	1	90	3	4	40	5	5	0	275
FCT	0	200	31	975	79	2	237	0	50	141	12	37	3	1767
Gombe	0	269	24	127	3	0	48	2	32	29	12	19	0	565
Imo	0	28	7	55	27	1	81	2	4	37	0	14	0	256
Jigawa	6	136	2	152	1	0	58	0	11	11	1	9	1	388
Kaduna	0	220	19	475	8	11	297	5	34	148	26	58	7	1308
Kano	6	123	61	197	3	0	96	2	11	36	10	34	6	585
Katsina	1	232	35	150	5	1	20	0	21	20	2	7	6	500
Kebbi	2	188	11	111	0	1	2	0	9	23	3	6	1	357
Kogi	5	53	17	145	8	0	161	0	19	69	26	56	4	563
Kwara	0	51	4	103	5	0	112	0	21	47	21	68	3	435
Lagos	0	122	18	196	60	0	192	6	17	231	20	50	6	918
Nasarawa	0	307	7	255	11	0	136	0	13	60	3	1	2	795
Niger	0	252	25	204	8	0	108	0	17	84	17	47	2	764
Ogun	0	107	6	240	77	0	379	1	32	356	41	37	2	1278
Ondo	0	126	4	139	31	0	172	1	19	82	19	37	0	630
Osun	2	53	1	72	14	0	130	0	13	46	6	26	1	364
Oyo	0	139	7	169	31	1	204	0	30	134	30	55	3	803
Plateau	0	50	29	133	6	0	71	0	2	53	0	7	1	352
Rivers	0	12	3	63	17	0	39	5	6	53	8	7	0	213
Sokoto	1	97	11	106	4	3	5	0	6	0	8	10	3	254
Taraba	1	82	60	99	1	0	20	1	12	3	3	7	0	289
Yobe	1	1	29	102	4	0	44	1	28	17	1	3	3	234
Zamfara	0	78	2	126	0	0	17	0	17	11	4	9	1	265
TOTAL	32	3488	613	5479	546	36	3389	42	498	2214	364	722	77	17500

CATEGORY OF VEHICLES INVOLVED IN ROAD TRAFFIC CRASHES 2019		
	Vehicle Category	
	Frequency	Percentage
PRIVATE	5,972	34.13%
COMMERCIAL	11,319	64.68%
GOVERNMENT	204	1.17%
DIPLOMAT	5	0.03%
TOTAL	17,500	100.00%

Causative Factors of Road Traffic Crashes in Year 2019 by State

STATE	SPV	UPD	TBT	MDV	BFL	OVL	DOT	WOT	DGD	BRD	RTV	OBS	SOS	DAD	PWR	FTQ	SLV	OTHERS	TOTAL
Abia	43	1	4	2	8	0	0	7	7	1	12	2	14	0	1	0	3	0	105
Adamawa	103	0	7	2	0	2	0	8	7	0	6	25	0	1	0	0	29	0	190
Akwa Ibom	40	0	3	5	3	2	2	5	9	1	3	0	0	1	0	0	7	1	82
Anambra	71	0	2	5	32	0	0	22	9	0	12	3	0	0	0	1	1	0	158
Bauchi	146	0	49	9	3	4	15	56	34	20	13	9	11	0	0	2	15	0	386
Bayelsa	9	0	1	0	1	0	0	1	0	1	0	0	0	1	1	0	2	0	17
Benue	261	0	1	0	0	0	0	0	1	0	0	0	0	0	0	0	2	0	265
Borno	36	0	4	2	1	0	0	7	5	1	5	2	0	0	0	0	1	0	64
Cross River	58	0	10	1	4	2	1	10	8	5	3	0	0	1	0	0	7	1	111
Delta	96	0	26	3	4	2	0	16	19	0	13	3	0	0	0	2	12	5	201
Ebonyi	50	0	12	1	2	0	0	15	8	0	2	2	12	0	0	0	2	0	106
Edo	128	0	21	13	44	2	1	12	23	2	4	1	1	2	0	1	1	2	258
Ekiti	34	0	2	8	5	4	0	12	2	3	4	1	1	2	1	0	22	7	108
Enugu	62	0	5	4	30	0	2	19	9	0	13	2	0	0	0	0	39	3	188
FCT	697	1	84	25	36	2	4	40	112	18	66	28	3	3	10	68	45	27	1269
Gombe	105	0	15	4	9	4	0	22	74	6	19	1	2	0	0	0	84	0	345
Imo	70	0	12	2	20	0	2	8	4	1	4	2	8	0	0	0	1	1	135
Jigawa	135	1	29	2	1	17	2	7	3	0	22	18	0	0	0	0	2	9	248
Kaduna	414	18	124	28	18	8	10	100	79	16	23	15	2	1	0	18	37	6	917
Kano	166	1	17	5	7	3	1	39	23	1	28	5	0	0	2	2	7	3	310
Katsina	152	5	15	6	0	2	4	18	30	9	6	4	0	0	0	0	7	0	258
Kebbi	94	5	6	1	0	4	0	22	10	0	19	2	1	0	0	5	4	1	174
Kogi	167	1	24	6	25	2	0	37	2	1	18	1	0	1	0	0	59	11	355
Kwara	93	0	16	10	12	3	7	41	20	1	6	8	0	1	0	0	50	12	280
Lagos	234	1	12	45	104	4	11	20	58	22	41	5	0	6	0	5	0	42	610
Nasarawa	229	0	24	11	9	7	20	56	43	5	17	4	0	6	0	0	21	91	543
Niger	242	1	11	24	15	6	25	48	20	3	38	1	3	3	0	2	4	4	450
Ogun	434	2	57	38	72	6	1	85	70	8	28	15	4	5	1	3	2	0	831
Ondo	225	4	29	10	31	4	6	42	36	13	7	3	0	2	9	1	1	0	423
Osun	129	0	27	4	21	8	4	29	11	10	25	9	1	1	3	3	1	0	286
Oyo	219	0	28	22	43	2	5	68	69	7	26	10	4	1	9	5	2	0	520
Plateau	98	0	13	11	9	1	2	25	10	1	3	1	0	0	0	6	12	10	202
Rivers	56	0	19	4	1	2	1	18	13	1	6	2	0	1	2	0	1	1	128
Sokoto	108	0	7	1	2	6	18	1	9	1	7	6	0	0	0	0	0	4	170
Taraba	21	0	9	0	3	0	0	14	76	0	2	0	11	1	0	1	9	0	147
Yobe	52	1	31	15	1	7	7	17	33	3	3	1	1	0	1	0	4	0	177
Zamfara	65	0	16	0	0	4	0	19	16	0	6	0	0	0	0	0	2	6	134
Grand total	5342	42	772	329	576	120	151	966	962	161	510	191	79	40	40	125	498	247	11151

LEGEND OF CAUSATIVE FACTORS CODE	
CAUSATIVE FACTORS	CODE
Speed Violation (SPV)	SPV
Use of Phone While Driving (UPWD)	UPWD
Tyre Burst (TBT)	TBT
Mechanically Deficient Vehicle (MDV)	MDV
Brake Failure (BFL)	BFL
Overloading (OVL)	OVL
Dangerous Overtaking (DOT)	DOT
Wrongful Overtaking (WOT)	WOT
Dangerous Driving (DGD)	DGD
Bad Road (BRD)	BRD
Route Violation (RTV)	RTV
Road Obstruction Violation (OBS)	OBS
Sleeping on Steering (SOS)	SOS
Driving Under Alcohol/Drug Influence (DAD)	DAD
Poor Weather (PWR)	PWR
Fatigue (FTQ)	FTQ
Sign Light Violation (SLV)	SLV
Others	OTH

National Driver's License Production 2019

State	Production	%
Abia	13,195	1.7
Adamawa	6,682	0.8
Akwa-Ibom	11,086	1.4
Anambra	23,977	3.0
Bauchi	7,942	1.0
Bayelsa	11,460	1.4
Benue	8,011	1.0
Borno	8,618	1.1
Cross-River	7,847	1.0
Delta	43,535	5.5
Ebonyi	6,206	0.8
Edo	35,875	4.5
Ekiti	7,682	1.0
Enugu	25,606	3.2
FCT	85,147	10.8
Gombe	6,380	0.8
Imo	9,733	1.2
Jigawa	2691	0.3
Kaduna	33,550	4.2
Kano	23,929	3.0
Katsina	6,430	0.8
Kebbi	1894	0.2
Kogi	6,898	0.9
Kwara	11,447	1.4
Lagos	178,427	22.5
Nasarawa	10,577	1.3
Niger	8,496	1.1
Ogun	46,911	5.9
Ondo	13,757	1.7
Osun	13,404	1.7
Oyo	47,514	6.0
Plateau	15,641	2.0
Rivers	37,017	4.7
Sokoto	4122	0.5
Taraba	3820	0.5
Yobe	4312	0.5
Zamfara	1808	0.2
TOTAL	791,627	100.0

Number Plate production 2019	
Motorvehicle	2019
Government Motor Vehicle	5754
Government Articulated (High Capacity Vehilcles)	0
Private Motor Vehicle	258,411
Commercial Motor Vehicle	115,882
Non Government-Articulated (High Capacity Vehilcles)	15
Fancy (Customised)	908
Out of Series	276
Military/Paramillitary	1206
Federal Government	2888
Diplomatic	740
comp	73
Gov fan	575
Dealer (Car Dealers)	474
Sub Total	387,202
Motorcycle	
Government Motor Cycle	1632
Private Motor Cycle	122,197
Commercial Motor Cycle	156,906
Military/Paramillitary Motor Cycle	87140
Fancy (Customised)	17
Federal Government	1262
Dealer (Car Dealers)	24
Sub Total	369,178
Reprint (National Uniform Licensing Scheme, Lagos)	
Motor Vehicle	657
Motor Cycle	304
Sub Total	961
Total Production	
Motor Vehicle	387,202
Motorcycle	369,178
Reprint	961
Grand Total	757,341

ACKNOWLEDGEMENTS/CONTACTS

Acknowledgements

We acknowledge the contributions of our strategic partner Federal Road Safety Corps (FRSC) and our technical partner, Proshare in the design, concept and production of this publication.





Contact Us

 @nigerianstat

 NBSNigeria

 www.nigerianstat.gov.ng

 **Head Office Address**
Plot 762, Independence Avenue, Central
Business District, FCT, Abuja Nigeria.

 +234 803 386 5388

 feedback@nigerianstat.gov.ng